



wwPDB X-ray Structure Validation Summary Report ⓘ

Feb 14, 2017 – 02:48 pm GMT

PDB ID : 2V96
Title : STRUCTURE OF THE UNPHOTOLYSED COMPLEX OF TCACHE WITH
1-(2-NITROPHENYL)-2,2,2-TRIFLUOROETHYL-ARSENOCHOLINE AT
100K
Authors : Colletier, J.-P.; Sanson, B.; Royant, A.; Specht, A.; Nachon, F.; Masson, P.;
Zaccai, G.; Sussman, J.L.; Goeldner, M.; Silman, I.; Bourgeois, D.; Weik, M.
Deposited on : 2007-08-22
Resolution : 2.40 Å(reported)

This is a wwPDB X-ray Structure Validation Summary Report for a publicly released PDB entry.

We welcome your comments at validation@mail.wwpdb.org

A user guide is available at

<http://wwpdb.org/validation/2016/XrayValidationReportHelp>

with specific help available everywhere you see the ⓘ symbol.

The following versions of software and data (see [references ⓘ](#)) were used in the production of this report:

MolProbity : 4.02b-467
Mogul : 1.7.2 (RC1), CSD as538be (2017)
Xtriage (Phenix) : 1.9-1692
EDS : trunk28620
Percentile statistics : 20161228.v01 (using entries in the PDB archive December 28th 2016)
Refmac : 5.8.0135
CCP4 : 6.5.0
Ideal geometry (proteins) : Engh & Huber (2001)
Ideal geometry (DNA, RNA) : Parkinson et al. (1996)
Validation Pipeline (wwPDB-VP) : recalc28949

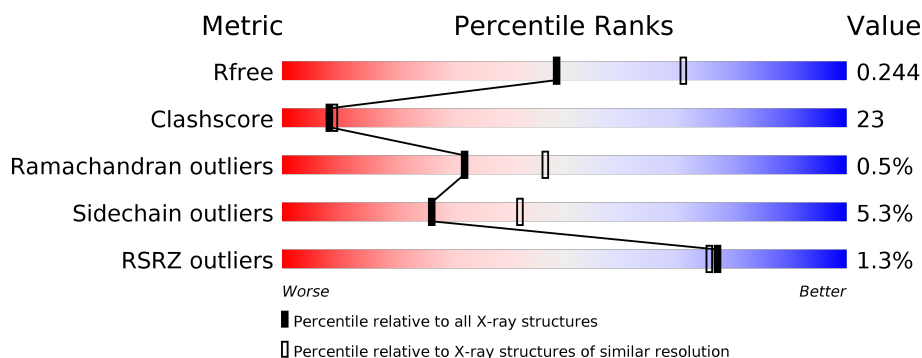
1 Overall quality at a glance

The following experimental techniques were used to determine the structure:

X-RAY DIFFRACTION

The reported resolution of this entry is 2.40 Å.

Percentile scores (ranging between 0-100) for global validation metrics of the entry are shown in the following graphic. The table shows the number of entries on which the scores are based.



Metric	Whole archive (#Entries)	Similar resolution (#Entries, resolution range(Å))
R_{free}	100719	3166 (2.40-2.40)
Clashscore	112137	3674 (2.40-2.40)
Ramachandran outliers	110173	3616 (2.40-2.40)
Sidechain outliers	110143	3617 (2.40-2.40)
RSRZ outliers	101464	3195 (2.40-2.40)

The table below summarises the geometric issues observed across the polymeric chains and their fit to the electron density. The red, orange, yellow and green segments on the lower bar indicate the fraction of residues that contain outliers for ≥ 3 , 2, 1 and 0 types of geometric quality criteria. A grey segment represents the fraction of residues that are not modelled. The numeric value for each fraction is indicated below the corresponding segment, with a dot representing fractions $\leq 5\%$. The upper red bar (where present) indicates the fraction of residues that have poor fit to the electron density. The numeric value is given above the bar.

Mol	Chain	Length	Quality of chain
1	A	537	<div> <div>%</div> <div> <div></div> <div>63%</div> <div>32%</div> <div>• •</div> </div> </div>
1	B	537	<div> <div>%</div> <div> <div></div> <div>65%</div> <div>30%</div> <div>• •</div> </div> </div>

The following table lists non-polymeric compounds, carbohydrate monomers and non-standard residues in protein, DNA, RNA chains that are outliers for geometric or electron-density-fit criteria:

Mol	Type	Chain	Res	Chirality	Geometry	Clashes	Electron density
2	CFQ	A	1537	-	-	X	-
2	CFQ	B	1537	-	-	X	-

2 Entry composition [i](#)

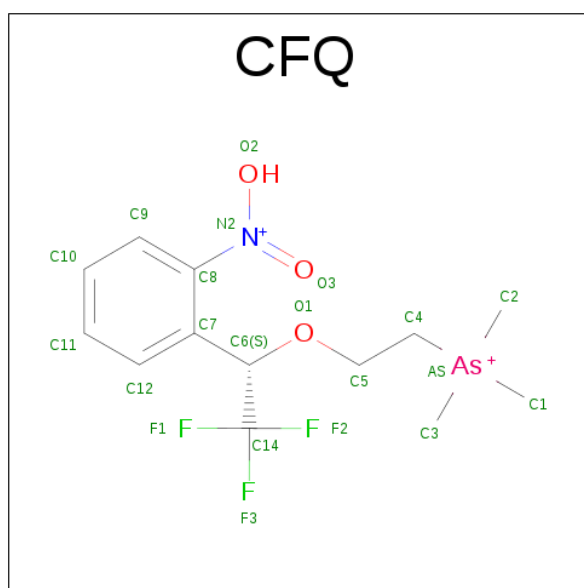
There are 4 unique types of molecules in this entry. The entry contains 9685 atoms, of which 0 are hydrogens and 0 are deuteriums.

In the tables below, the ZeroOcc column contains the number of atoms modelled with zero occupancy, the AltConf column contains the number of residues with at least one atom in alternate conformation and the Trace column contains the number of residues modelled with at most 2 atoms.

- Molecule 1 is a protein called ACETYLCHOLINESTERASE.

Mol	Chain	Residues	Atoms					ZeroOcc	AltConf	Trace
1	A	528	Total	C	N	O	S	0	8	0
			4277	2745	724	785	23			
1	B	533	Total	C	N	O	S	0	6	1
			4294	2750	730	792	22			

- Molecule 2 is 1-(2-NITROPHENYL)-2,2,2-TRIFLUOROETHYL]-ARSENOCHOLINE (three-letter code: CFQ) (formula: $C_{13}H_{19}AsF_3NO_3$).



Mol	Chain	Residues	Atoms					ZeroOcc	AltConf
2	A	1	Total	As	C	F	N	O	0
			21	1	13	3	1	3	
2	A	1	Total	As	C	F	N	O	0
			21	1	13	3	1	3	
2	B	1	Total	As	C	F	N	O	0
			21	1	13	3	1	3	
2	B	1	Total	As	C	F	N	O	0
			21	1	13	3	1	3	

- Molecule 3 is SUGAR (N-ACETYL-D-GLUCOSAMINE) (three-letter code: NAG) (formula: $C_8H_{15}NO_6$).



Mol	Chain	Residues	Atoms				ZeroOcc	AltConf
3	A	1	Total	C	N	O	0	0
			14	8	1	5		
3	A	1	Total	C	N	O	0	0
			14	8	1	5		
3	B	1	Total	C	N	O	0	0
			14	8	1	5		
3	B	1	Total	C	N	O	0	0
			14	8	1	5		

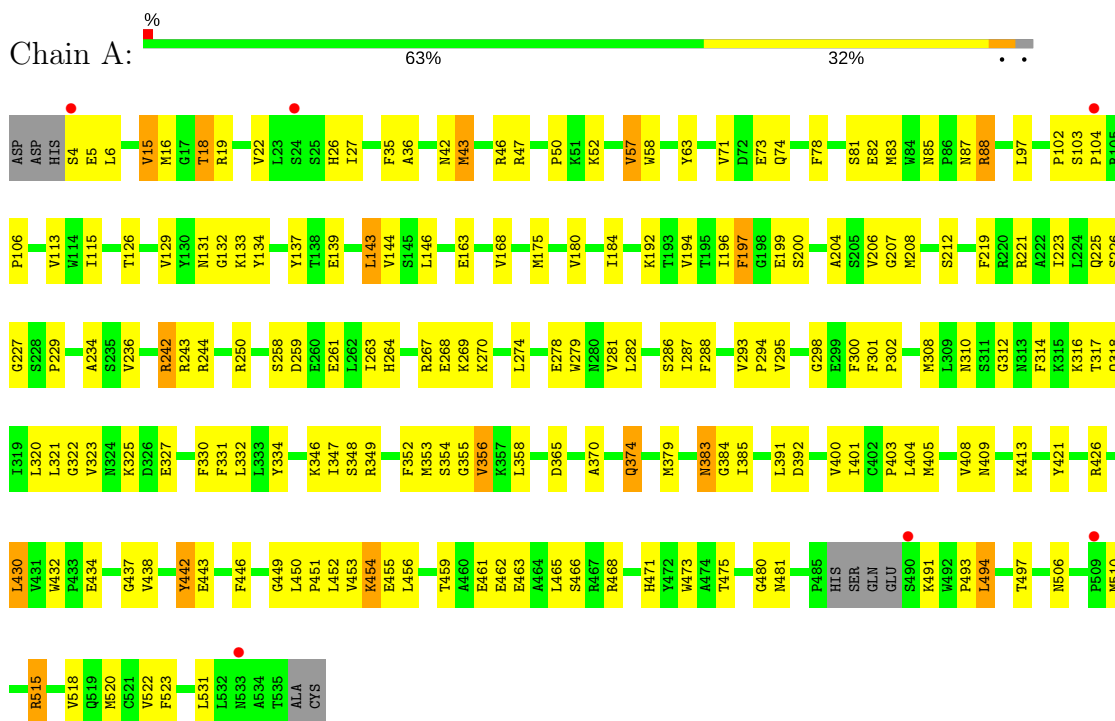
- Molecule 4 is water.

Mol	Chain	Residues	Atoms		ZeroOcc	AltConf
4	A	494	Total	O	0	0
			494	494		
4	B	480	Total	O	0	0
			480	480		

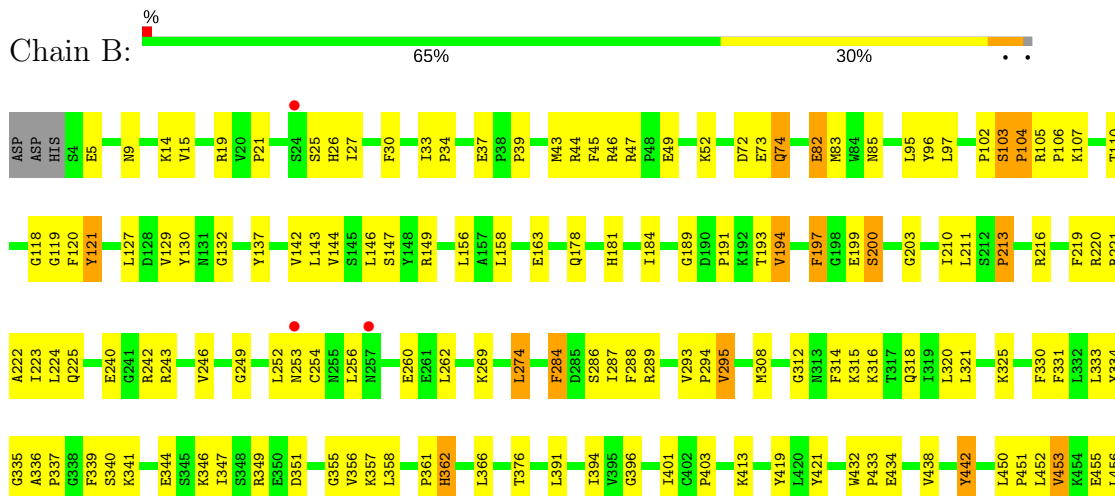
3 Residue-property plots

These plots are drawn for all protein, RNA and DNA chains in the entry. The first graphic for a chain summarises the proportions of the various outlier classes displayed in the second graphic. The second graphic shows the sequence view annotated by issues in geometry and electron density. Residues are color-coded according to the number of geometric quality criteria for which they contain at least one outlier: green = 0, yellow = 1, orange = 2 and red = 3 or more. A red dot above a residue indicates a poor fit to the electron density ($RSRZ > 2$). Stretches of 2 or more consecutive residues without any outlier are shown as a green connector. Residues present in the sample, but not in the model, are shown in grey.

• Molecule 1: ACETYLCHOLINESTERASE



• Molecule 1: ACETYLCHOLINESTERASE





4 Data and refinement statistics

Property	Value	Source
Space group	P 21 21 21	Depositor
Cell constants a, b, c, α , β , γ	91.42Å 103.64Å 147.31Å 90.00° 90.00° 90.00°	Depositor
Resolution (Å)	19.96 – 2.40 19.96 – 2.40	Depositor EDS
% Data completeness (in resolution range)	99.4 (19.96-2.40) 99.8 (19.96-2.40)	Depositor EDS
R_{merge}	0.08	Depositor
R_{sym}	(Not available)	Depositor
$\langle I/\sigma(I) \rangle$ ¹	3.05 (at 2.41Å)	Xtriage
Refinement program	CNS 1.1	Depositor
R, R_{free}	0.209 , 0.242 0.209 , 0.244	Depositor DCC
R_{free} test set	2747 reflections (5.26%)	DCC
Wilson B-factor (Å ²)	29.1	Xtriage
Anisotropy	0.934	Xtriage
Bulk solvent k_{sol} (e/Å ³), B_{sol} (Å ²)	0.32 , 50.4	EDS
L-test for twinning ²	$\langle L \rangle = 0.46$, $\langle L^2 \rangle = 0.29$	Xtriage
Estimated twinning fraction	No twinning to report.	Xtriage
F_o, F_c correlation	0.95	EDS
Total number of atoms	9685	wwPDB-VP
Average B, all atoms (Å ²)	33.0	wwPDB-VP

Xtriage's analysis on translational NCS is as follows: *The analyses of the Patterson function reveals a significant off-origin peak that is 43.96 % of the origin peak, indicating pseudo translational symmetry. The chance of finding a peak of this or larger height randomly in a structure without pseudo translational symmetry is equal to 1.6360e-04. The detected translational NCS is most likely also responsible for the elevated intensity ratio.*

¹Intensities estimated from amplitudes.

²Theoretical values of $\langle |L| \rangle$, $\langle L^2 \rangle$ for acentric reflections are 0.5, 0.333 respectively for untwinned datasets, and 0.375, 0.2 for perfectly twinned datasets.

5 Model quality [i](#)

5.1 Standard geometry [i](#)

Bond lengths and bond angles in the following residue types are not validated in this section: NAG, CFQ

The Z score for a bond length (or angle) is the number of standard deviations the observed value is removed from the expected value. A bond length (or angle) with $|Z| > 5$ is considered an outlier worth inspection. RMSZ is the root-mean-square of all Z scores of the bond lengths (or angles).

Mol	Chain	Bond lengths		Bond angles	
		RMSZ	$\# Z > 5$	RMSZ	$\# Z > 5$
1	A	0.49	0/4398	0.68	0/5970
1	B	0.47	0/4417	0.70	0/5997
All	All	0.48	0/8815	0.69	0/11967

Chiral center outliers are detected by calculating the chiral volume of a chiral center and verifying if the center is modelled as a planar moiety or with the opposite hand. A planarity outlier is detected by checking planarity of atoms in a peptide group, atoms in a mainchain group or atoms of a sidechain that are expected to be planar.

Mol	Chain	#Chirality outliers	#Planarity outliers
1	A	0	1
1	B	0	1
All	All	0	2

There are no bond length outliers.

There are no bond angle outliers.

There are no chirality outliers.

All (2) planarity outliers are listed below:

Mol	Chain	Res	Type	Group
1	A	442	TYR	Sidechain
1	B	442	TYR	Sidechain

5.2 Too-close contacts [i](#)

In the following table, the Non-H and H(model) columns list the number of non-hydrogen atoms and hydrogen atoms in the chain respectively. The H(added) column lists the number of hydrogen atoms added and optimized by MolProbity. The Clashes column lists the number of clashes within the asymmetric unit, whereas Symm-Clashes lists symmetry related clashes.

Mol	Chain	Non-H	H(model)	H(added)	Clashes	Symm-Clashes
1	A	4277	0	4137	205	0
1	B	4294	0	4138	174	2
2	A	42	0	16	15	0
2	B	42	0	16	17	0
3	A	28	0	26	0	0
3	B	28	0	26	0	0
4	A	494	0	0	70	2
4	B	480	0	0	61	0
All	All	9685	0	8359	397	2

The all-atom clashscore is defined as the number of clashes found per 1000 atoms (including hydrogen atoms). The all-atom clashscore for this structure is 23.

The worst 5 of 397 close contacts within the same asymmetric unit are listed below, sorted by their clash magnitude.

Atom-1	Atom-2	Interatomic distance (Å)	Clash overlap (Å)
2:A:1537:CFQ:AS	2:A:1537:CFQ:C4	2.19	1.50
2:B:1537:CFQ:AS	2:B:1537:CFQ:C4	2.21	1.47
2:A:1537:CFQ:C2	2:A:1537:CFQ:AS	2.23	1.47
2:B:1536:CFQ:AS	2:B:1536:CFQ:C2	2.23	1.47
2:B:1536:CFQ:AS	2:B:1536:CFQ:C4	2.23	1.46

All (2) symmetry-related close contacts are listed below. The label for Atom-2 includes the symmetry operator and encoded unit-cell translations to be applied.

Atom-1	Atom-2	Interatomic distance (Å)	Clash overlap (Å)
1:B:508:GLU:OE1	4:A:2193:HOH:O[3_745]	2.09	0.11
1:B:508:GLU:OE2	4:A:2193:HOH:O[3_745]	2.14	0.06

5.3 Torsion angles ⓘ

5.3.1 Protein backbone ⓘ

In the following table, the Percentiles column shows the percent Ramachandran outliers of the chain as a percentile score with respect to all X-ray entries followed by that with respect to entries of similar resolution.

The Analysed column shows the number of residues for which the backbone conformation was analysed, and the total number of residues.

Mol	Chain	Analysed	Favoured	Allowed	Outliers	Percentiles	
1	A	532/537 (99%)	501 (94%)	31 (6%)	0	100	100
1	B	537/537 (100%)	490 (91%)	42 (8%)	5 (1%)	20	29
All	All	1069/1074 (100%)	991 (93%)	73 (7%)	5 (0%)	32	46

All (5) Ramachandran outliers are listed below:

Mol	Chain	Res	Type
1	B	103	SER
1	B	455	GLU
1	B	118	GLY
1	B	104	PRO
1	B	535	THR

5.3.2 Protein sidechains ⓘ

In the following table, the Percentiles column shows the percent sidechain outliers of the chain as a percentile score with respect to all X-ray entries followed by that with respect to entries of similar resolution.

The Analysed column shows the number of residues for which the sidechain conformation was analysed, and the total number of residues.

Mol	Chain	Analysed	Rotameric	Outliers	Percentiles	
1	A	469/469 (100%)	445 (95%)	24 (5%)	28	44
1	B	471/469 (100%)	442 (94%)	29 (6%)	21	34
All	All	940/938 (100%)	887 (94%)	53 (6%)	26	39

5 of 53 residues with a non-rotameric sidechain are listed below:

Mol	Chain	Res	Type
1	A	515	ARG
1	B	129	VAL
1	B	497	THR
1	B	5	GLU
1	B	74	GLN

Some sidechains can be flipped to improve hydrogen bonding and reduce clashes. 5 of 11 such sidechains are listed below:

Mol	Chain	Res	Type
1	A	257	ASN

Continued on next page...

Continued from previous page...

Mol	Chain	Res	Type
1	A	374	GLN
1	B	68	GLN
1	A	181	HIS
1	B	26	HIS

5.3.3 RNA [i](#)

There are no RNA molecules in this entry.

5.4 Non-standard residues in protein, DNA, RNA chains [i](#)

There are no non-standard protein/DNA/RNA residues in this entry.

5.5 Carbohydrates [i](#)

There are no carbohydrates in this entry.

5.6 Ligand geometry [i](#)

8 ligands are modelled in this entry.

In the following table, the Counts columns list the number of bonds (or angles) for which Mogul statistics could be retrieved, the number of bonds (or angles) that are observed in the model and the number of bonds (or angles) that are defined in the chemical component dictionary. The Link column lists molecule types, if any, to which the group is linked. The Z score for a bond length (or angle) is the number of standard deviations the observed value is removed from the expected value. A bond length (or angle) with $|Z| > 2$ is considered an outlier worth inspection. RMSZ is the root-mean-square of all Z scores of the bond lengths (or angles).

Mol	Type	Chain	Res	Link	Bond lengths			Bond angles		
					Counts	RMSZ	$\# Z > 2$	Counts	RMSZ	$\# Z > 2$
2	CFQ	A	1536	-	14,21,21	2.47	2 (14%)	16,31,31	1.54	3 (18%)
2	CFQ	A	1537	-	14,21,21	2.66	3 (21%)	16,31,31	1.53	4 (25%)
3	NAG	A	1538	1	14,14,15	0.76	0	15,19,21	0.78	1 (6%)
3	NAG	A	1539	1	14,14,15	0.62	0	15,19,21	0.70	0
2	CFQ	B	1536	-	14,21,21	2.31	4 (28%)	16,31,31	1.60	3 (18%)
2	CFQ	B	1537	-	14,21,21	2.96	4 (28%)	16,31,31	1.61	4 (25%)
3	NAG	B	1538	1	14,14,15	0.69	0	15,19,21	1.19	1 (6%)
3	NAG	B	1539	1	14,14,15	0.56	0	15,19,21	0.75	0

In the following table, the Chirals column lists the number of chiral outliers, the number of chiral centers analysed, the number of these observed in the model and the number defined in the chemical component dictionary. Similar counts are reported in the Torsion and Rings columns. '-' means no outliers of that kind were identified.

Mol	Type	Chain	Res	Link	Chirals	Torsions	Rings
2	CFQ	A	1536	-	-	0/15/21/21	0/1/1/1
2	CFQ	A	1537	-	-	0/15/21/21	0/1/1/1
3	NAG	A	1538	1	-	0/6/23/26	0/1/1/1
3	NAG	A	1539	1	-	0/6/23/26	0/1/1/1
2	CFQ	B	1536	-	-	0/15/21/21	0/1/1/1
2	CFQ	B	1537	-	-	0/15/21/21	0/1/1/1
3	NAG	B	1538	1	-	0/6/23/26	0/1/1/1
3	NAG	B	1539	1	-	0/6/23/26	0/1/1/1

The worst 5 of 13 bond length outliers are listed below:

Mol	Chain	Res	Type	Atoms	Z	Observed(Å)	Ideal(Å)
2	B	1536	CFQ	C9-C8	2.13	1.43	1.39
2	B	1537	CFQ	C9-C8	2.38	1.43	1.39
2	B	1537	CFQ	C12-C7	2.43	1.42	1.39
2	B	1536	CFQ	C12-C7	2.93	1.43	1.39
2	A	1537	CFQ	C12-C7	3.16	1.43	1.39

The worst 5 of 16 bond angle outliers are listed below:

Mol	Chain	Res	Type	Atoms	Z	Observed(°)	Ideal(°)
2	B	1536	CFQ	O1-C6-C7	-4.06	105.11	110.93
2	B	1537	CFQ	C9-C8-C7	-3.76	117.58	121.21
2	A	1536	CFQ	O1-C6-C7	-3.66	105.69	110.93
2	A	1537	CFQ	C9-C8-C7	-3.62	117.70	121.21
3	B	1538	NAG	C2-N2-C7	-3.35	118.05	122.94

There are no chirality outliers.

There are no torsion outliers.

There are no ring outliers.

4 monomers are involved in 32 short contacts:

Mol	Chain	Res	Type	Clashes	Symm-Clashes
2	A	1536	CFQ	5	0
2	A	1537	CFQ	10	0
2	B	1536	CFQ	7	0
2	B	1537	CFQ	10	0

5.7 Other polymers [i](#)

There are no such residues in this entry.

5.8 Polymer linkage issues [i](#)

There are no chain breaks in this entry.

6 Fit of model and data [i](#)

6.1 Protein, DNA and RNA chains [i](#)

In the following table, the column labelled ‘#RSRZ> 2’ contains the number (and percentage) of RSRZ outliers, followed by percent RSRZ outliers for the chain as percentile scores relative to all X-ray entries and entries of similar resolution. The OWAB column contains the minimum, median, 95th percentile and maximum values of the occupancy-weighted average B-factor per residue. The column labelled ‘Q< 0.9’ lists the number of (and percentage) of residues with an average occupancy less than 0.9.

Mol	Chain	Analysed	<RSRZ>	#RSRZ>2	OWAB(Å ²)	Q<0.9
1	A	528/537 (98%)	-0.42	6 (1%) 80 79	20, 32, 46, 58	0
1	B	533/537 (99%)	-0.46	8 (1%) 74 72	20, 32, 47, 62	0
All	All	1061/1074 (98%)	-0.44	14 (1%) 77 75	20, 32, 46, 62	0

The worst 5 of 14 RSRZ outliers are listed below:

Mol	Chain	Res	Type	RSRZ
1	B	535	THR	5.4
1	B	485	PRO	4.2
1	B	486	HIS	3.8
1	B	489	GLU	3.4
1	A	509	PRO	3.2

6.2 Non-standard residues in protein, DNA, RNA chains [i](#)

There are no non-standard protein/DNA/RNA residues in this entry.

6.3 Carbohydrates [i](#)

There are no carbohydrates in this entry.

6.4 Ligands [i](#)

In the following table, the Atoms column lists the number of modelled atoms in the group and the number defined in the chemical component dictionary. LLDF column lists the quality of electron density of the group with respect to its neighbouring residues in protein, DNA or RNA chains. The B-factors column lists the minimum, median, 95th percentile and maximum values of B factors of atoms in the group. The column labelled ‘Q< 0.9’ lists the number of atoms with occupancy less than 0.9.

Mol	Type	Chain	Res	Atoms	RSCC	RSR	LLDF	B-factors(\AA^2)	Q<0.9
2	CFQ	A	1537	21/21	0.96	0.15	1.71	42,45,50,53	0
2	CFQ	B	1537	21/21	0.97	0.15	1.18	37,41,47,50	0
2	CFQ	A	1536	21/21	0.98	0.13	0.99	32,34,39,39	0
2	CFQ	B	1536	21/21	0.98	0.12	0.41	38,41,42,45	0
3	NAG	B	1539	14/15	0.92	0.23	-	41,43,44,44	0
3	NAG	A	1539	14/15	0.87	0.21	-	41,44,49,49	0
3	NAG	A	1538	14/15	0.63	0.38	-	60,61,63,63	0
3	NAG	B	1538	14/15	0.82	0.27	-	49,50,54,55	0

6.5 Other polymers [i](#)

There are no such residues in this entry.