



# Full wwPDB X-ray Structure Validation Report ⓘ

Feb 13, 2017 – 06:21 pm GMT

PDB ID : 3VBJ  
Title : Crystal Structure of AntD, an N-acyltransferase from *Bacillus cereus* in complex with dTDP and 3-hydroxybutyryl-CoA  
Authors : Kubiak, R.L.; Holden, H.M.  
Deposited on : 2012-01-02  
Resolution : 1.80 Å(reported)

This is a Full wwPDB X-ray Structure Validation Report for a publicly released PDB entry.

We welcome your comments at [validation@mail.wwpdb.org](mailto:validation@mail.wwpdb.org)

A user guide is available at

<http://wwpdb.org/validation/2016/XrayValidationReportHelp>

with specific help available everywhere you see the ⓘ symbol.

---

The following versions of software and data (see [references ⓘ](#)) were used in the production of this report:

MolProbity : 4.02b-467  
Mogul : 1.7.2 (RC1), CSD as538be (2017)  
Xtriage (Phenix) : 1.9-1692  
EDS : trunk28620  
Percentile statistics : 20161228.v01 (using entries in the PDB archive December 28th 2016)  
Refmac : 5.8.0135  
CCP4 : 6.5.0  
Ideal geometry (proteins) : Engh & Huber (2001)  
Ideal geometry (DNA, RNA) : Parkinson et al. (1996)  
Validation Pipeline (wwPDB-VP) : recalc28949

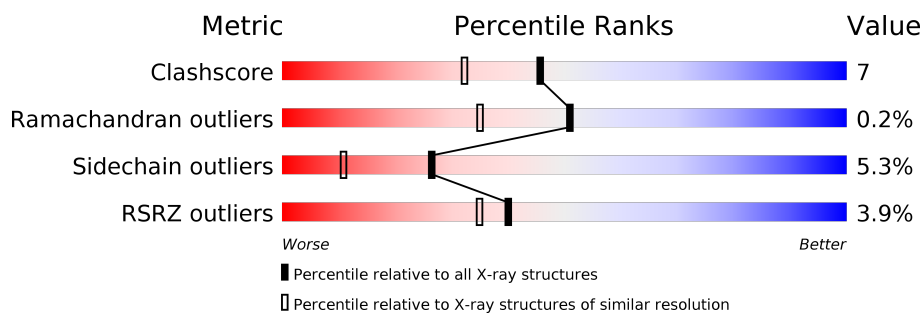
# 1 Overall quality at a glance

The following experimental techniques were used to determine the structure:

*X-RAY DIFFRACTION*

The reported resolution of this entry is 1.80 Å.

Percentile scores (ranging between 0-100) for global validation metrics of the entry are shown in the following graphic. The table shows the number of entries on which the scores are based.



Metric	Whole archive (#Entries)	Similar resolution (#Entries, resolution range(Å))
Clashscore	112137	5742 (1.80-1.80)
Ramachandran outliers	110173	5676 (1.80-1.80)
Sidechain outliers	110143	5675 (1.80-1.80)
RSRZ outliers	101464	4906 (1.80-1.80)

The table below summarises the geometric issues observed across the polymeric chains and their fit to the electron density. The red, orange, yellow and green segments on the lower bar indicate the fraction of residues that contain outliers for  $\geq 3$ , 2, 1 and 0 types of geometric quality criteria. A grey segment represents the fraction of residues that are not modelled. The numeric value for each fraction is indicated below the corresponding segment, with a dot representing fractions  $\leq 5\%$ . The upper red bar (where present) indicates the fraction of residues that have poor fit to the electron density. The numeric value is given above the bar.

Mol	Chain	Length	Quality of chain
1	A	205	 3% 77% 12% • 9%
1	C	205	 2% 75% 16% • 8%
1	E	205	 6% 74% 14% • 9%

## 2 Entry composition

There are 5 unique types of molecules in this entry. The entry contains 5051 atoms, of which 0 are hydrogens and 0 are deuteriums.

In the tables below, the ZeroOcc column contains the number of atoms modelled with zero occupancy, the AltConf column contains the number of residues with at least one atom in alternate conformation and the Trace column contains the number of residues modelled with at most 2 atoms.

- Molecule 1 is a protein called Galactoside O-acetyltransferase.

Mol	Chain	Residues	Atoms					ZeroOcc	AltConf	Trace
1	A	186	Total	C	N	O	S	0	6	0
			1467	952	242	265	8			
1	C	188	Total	C	N	O	S	0	4	0
			1474	955	241	270	8			
1	E	186	Total	C	N	O	S	0	2	0
			1445	936	238	263	8			

There are 51 discrepancies between the modelled and reference sequences:

Chain	Residue	Modelled	Actual	Comment	Reference
A	-16	MET	-	EXPRESSION TAG	UNP D7WGJ0
A	-15	GLY	-	EXPRESSION TAG	UNP D7WGJ0
A	-14	SER	-	EXPRESSION TAG	UNP D7WGJ0
A	-13	HIS	-	EXPRESSION TAG	UNP D7WGJ0
A	-12	HIS	-	EXPRESSION TAG	UNP D7WGJ0
A	-11	HIS	-	EXPRESSION TAG	UNP D7WGJ0
A	-10	HIS	-	EXPRESSION TAG	UNP D7WGJ0
A	-9	HIS	-	EXPRESSION TAG	UNP D7WGJ0
A	-8	HIS	-	EXPRESSION TAG	UNP D7WGJ0
A	-7	GLU	-	EXPRESSION TAG	UNP D7WGJ0
A	-6	ASN	-	EXPRESSION TAG	UNP D7WGJ0
A	-5	LEU	-	EXPRESSION TAG	UNP D7WGJ0
A	-4	TYR	-	EXPRESSION TAG	UNP D7WGJ0
A	-3	PHE	-	EXPRESSION TAG	UNP D7WGJ0
A	-2	GLN	-	EXPRESSION TAG	UNP D7WGJ0
A	-1	GLY	-	EXPRESSION TAG	UNP D7WGJ0
A	0	HIS	-	EXPRESSION TAG	UNP D7WGJ0
C	-16	MET	-	EXPRESSION TAG	UNP D7WGJ0
C	-15	GLY	-	EXPRESSION TAG	UNP D7WGJ0
C	-14	SER	-	EXPRESSION TAG	UNP D7WGJ0
C	-13	HIS	-	EXPRESSION TAG	UNP D7WGJ0
C	-12	HIS	-	EXPRESSION TAG	UNP D7WGJ0
C	-11	HIS	-	EXPRESSION TAG	UNP D7WGJ0

*Continued on next page...*

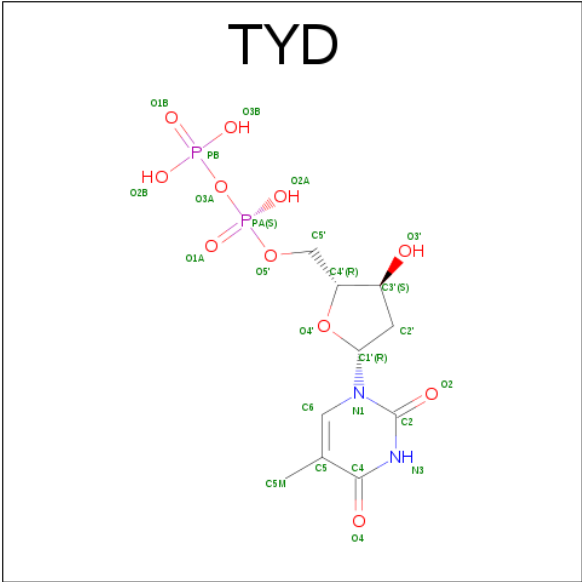
*Continued from previous page...*

Chain	Residue	Modelled	Actual	Comment	Reference
C	-10	HIS	-	EXPRESSION TAG	UNP D7WGJ0
C	-9	HIS	-	EXPRESSION TAG	UNP D7WGJ0
C	-8	HIS	-	EXPRESSION TAG	UNP D7WGJ0
C	-7	GLU	-	EXPRESSION TAG	UNP D7WGJ0
C	-6	ASN	-	EXPRESSION TAG	UNP D7WGJ0
C	-5	LEU	-	EXPRESSION TAG	UNP D7WGJ0
C	-4	TYR	-	EXPRESSION TAG	UNP D7WGJ0
C	-3	PHE	-	EXPRESSION TAG	UNP D7WGJ0
C	-2	GLN	-	EXPRESSION TAG	UNP D7WGJ0
C	-1	GLY	-	EXPRESSION TAG	UNP D7WGJ0
C	0	HIS	-	EXPRESSION TAG	UNP D7WGJ0
E	-16	MET	-	EXPRESSION TAG	UNP D7WGJ0
E	-15	GLY	-	EXPRESSION TAG	UNP D7WGJ0
E	-14	SER	-	EXPRESSION TAG	UNP D7WGJ0
E	-13	HIS	-	EXPRESSION TAG	UNP D7WGJ0
E	-12	HIS	-	EXPRESSION TAG	UNP D7WGJ0
E	-11	HIS	-	EXPRESSION TAG	UNP D7WGJ0
E	-10	HIS	-	EXPRESSION TAG	UNP D7WGJ0
E	-9	HIS	-	EXPRESSION TAG	UNP D7WGJ0
E	-8	HIS	-	EXPRESSION TAG	UNP D7WGJ0
E	-7	GLU	-	EXPRESSION TAG	UNP D7WGJ0
E	-6	ASN	-	EXPRESSION TAG	UNP D7WGJ0
E	-5	LEU	-	EXPRESSION TAG	UNP D7WGJ0
E	-4	TYR	-	EXPRESSION TAG	UNP D7WGJ0
E	-3	PHE	-	EXPRESSION TAG	UNP D7WGJ0
E	-2	GLN	-	EXPRESSION TAG	UNP D7WGJ0
E	-1	GLY	-	EXPRESSION TAG	UNP D7WGJ0
E	0	HIS	-	EXPRESSION TAG	UNP D7WGJ0

- Molecule 2 is CHLORIDE ION (three-letter code: CL) (formula: Cl).

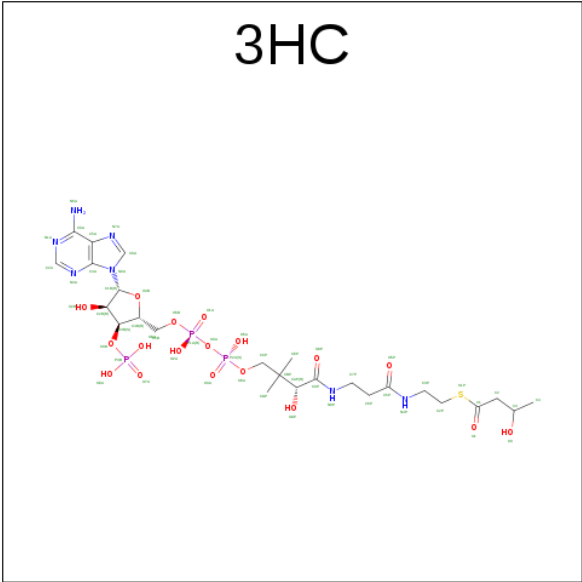
Mol	Chain	Residues	Atoms	ZeroOcc	AltConf
2	A	1	Total Cl 1 1	0	0

- Molecule 3 is THYMIDINE-5'-DIPHOSPHATE (three-letter code: TYD) (formula: C<sub>10</sub>H<sub>16</sub>N<sub>2</sub>O<sub>11</sub>P<sub>2</sub>).



Mol	Chain	Residues	Atoms					ZeroOcc	AltConf
3	A	1	Total	C	N	O	P	0	0
			25	10	2	11	2		
3	C	1	Total	C	N	O	P	0	0
			25	10	2	11	2		
3	E	1	Total	C	N	O	P	0	0
			25	10	2	11	2		

- Molecule 4 is 3-HYDROXYBUTANOYL-COENZYME A (three-letter code: 3HC) (formula: C<sub>25</sub>H<sub>42</sub>N<sub>7</sub>O<sub>18</sub>P<sub>3</sub>S).



Mol	Chain	Residues	Atoms						ZeroOcc	AltConf
4	A	1	Total	C	N	O	P	S	0	0
			54	25	7	18	3	1		
4	C	1	Total	C	N	O	P	S	0	0
			54	25	7	18	3	1		
4	E	1	Total	C	N	O	P	S	0	0
			54	25	7	18	3	1		

- Molecule 5 is water.

Mol	Chain	Residues	Atoms		ZeroOcc	AltConf
5	A	177	Total	O	0	0
			177	177		
5	C	138	Total	O	0	0
			138	138		
5	E	112	Total	O	0	0
			112	112		



## 4 Data and refinement statistics

Property	Value	Source
Space group	P 41	Depositor
Cell constants a, b, c, $\alpha$ , $\beta$ , $\gamma$	70.94Å 70.94Å 138.61Å 90.00° 90.00° 90.00°	Depositor
Resolution (Å)	31.72 – 1.80 31.72 – 1.80	Depositor EDS
% Data completeness (in resolution range)	95.0 (31.72-1.80) 95.1 (31.72-1.80)	Depositor EDS
$R_{merge}$	0.05	Depositor
$R_{sym}$	0.05	Depositor
$\langle I/\sigma(I) \rangle$ <sup>1</sup>	2.07 (at 1.80Å)	Xtriage
Refinement program	REFMAC 5.5.0109	Depositor
R, $R_{free}$	0.178 , 0.228 0.181 , (Not available)	Depositor DCC
$R_{free}$ test set	No test flags present.	DCC
Wilson B-factor (Å <sup>2</sup> )	18.3	Xtriage
Anisotropy	0.082	Xtriage
Bulk solvent $k_{sol}$ (e/Å <sup>3</sup> ), $B_{sol}$ (Å <sup>2</sup> )	0.38 , 55.6	EDS
L-test for twinning <sup>2</sup>	$\langle  L  \rangle = 0.51$ , $\langle L^2 \rangle = 0.34$	Xtriage
Estimated twinning fraction	0.041 for h,-k,-l	Xtriage
$F_o, F_c$ correlation	0.96	EDS
Total number of atoms	5051	wwPDB-VP
Average B, all atoms (Å <sup>2</sup> )	25.0	wwPDB-VP

Xtriage's analysis on translational NCS is as follows: *The largest off-origin peak in the Patterson function is 4.97% of the height of the origin peak. No significant pseudotranslation is detected.*

<sup>1</sup>Intensities estimated from amplitudes.

<sup>2</sup>Theoretical values of  $\langle |L| \rangle$ ,  $\langle L^2 \rangle$  for acentric reflections are 0.5, 0.333 respectively for untwinned datasets, and 0.375, 0.2 for perfectly twinned datasets.



## 5 Model quality [i](#)

### 5.1 Standard geometry [i](#)

Bond lengths and bond angles in the following residue types are not validated in this section: TYD, 3HC, CL

The Z score for a bond length (or angle) is the number of standard deviations the observed value is removed from the expected value. A bond length (or angle) with  $|Z| > 5$  is considered an outlier worth inspection. RMSZ is the root-mean-square of all Z scores of the bond lengths (or angles).

Mol	Chain	Bond lengths		Bond angles	
		RMSZ	# Z  >5	RMSZ	# Z  >5
1	A	0.54	0/1511	1.06	3/2035 (0.1%)
1	C	0.51	0/1513	1.06	3/2038 (0.1%)
1	E	0.52	0/1477	1.10	5/1990 (0.3%)
All	All	0.53	0/4501	1.07	11/6063 (0.2%)

There are no bond length outliers.

All (11) bond angle outliers are listed below:

Mol	Chain	Res	Type	Atoms	Z	Observed(°)	Ideal(°)
1	C	166	ARG	NE-CZ-NH2	-7.23	116.69	120.30
1	E	166	ARG	NE-CZ-NH2	-6.92	116.84	120.30
1	E	79	ASP	CB-CG-OD1	5.80	123.52	118.30
1	C	117	LYS	CD-CE-NZ	5.73	124.89	111.70
1	A	50	LEU	CB-CG-CD1	-5.70	101.32	111.00
1	E	156	ASP	CB-CG-OD1	5.62	123.35	118.30
1	A	43	ARG	NE-CZ-NH1	-5.45	117.58	120.30
1	A	117	LYS	CD-CE-NZ	5.26	123.79	111.70
1	E	1[A]	MET	CG-SD-CE	5.24	108.58	100.20
1	E	1[B]	MET	CG-SD-CE	5.24	108.58	100.20
1	C	148	SER	CB-CA-C	-5.21	100.20	110.10

There are no chirality outliers.

There are no planarity outliers.

### 5.2 Too-close contacts [i](#)

In the following table, the Non-H and H(model) columns list the number of non-hydrogen atoms and hydrogen atoms in the chain respectively. The H(added) column lists the number of hydrogen

atoms added and optimized by MolProbity. The Clashes column lists the number of clashes within the asymmetric unit, whereas Symm-Clashes lists symmetry related clashes.

Mol	Chain	Non-H	H(model)	H(added)	Clashes	Symm-Clashes
1	A	1467	0	1541	22	0
1	C	1474	0	1530	26	0
1	E	1445	0	1506	32	0
2	A	1	0	0	0	0
3	A	25	0	13	0	0
3	C	25	0	13	0	0
3	E	25	0	13	0	0
4	A	54	0	38	0	0
4	C	54	0	38	1	0
4	E	54	0	38	1	0
5	A	177	0	0	2	0
5	C	138	0	0	3	0
5	E	112	0	0	3	0
All	All	5051	0	4730	68	0

The all-atom clashscore is defined as the number of clashes found per 1000 atoms (including hydrogen atoms). The all-atom clashscore for this structure is 7.

All (68) close contacts within the same asymmetric unit are listed below, sorted by their clash magnitude.

Atom-1	Atom-2	Interatomic distance (Å)	Clash overlap (Å)
1:A:125:ILE:HD13	1:C:102[A]:MET:HE1	1.49	0.94
1:E:7:GLN:H	1:E:7:GLN:HE21	1.23	0.86
1:A:102[B]:MET:HE1	1:E:125:ILE:HD13	1.65	0.79
1:C:76:GLU:OE2	1:C:117:LYS:NZ	2.15	0.79
1:A:125:ILE:HD13	1:C:102[A]:MET:CE	2.17	0.74
1:E:7:GLN:HG3	5:E:463:HOH:O	1.88	0.73
1:A:117:LYS:HE2	5:A:296:HOH:O	1.91	0.70
1:E:117:LYS:HE3	1:E:119:ILE:HD11	1.74	0.70
1:A:125:ILE:CD1	1:C:102[A]:MET:HE1	2.23	0.67
1:E:184:LYS:O	1:E:186:MET:N	2.29	0.66
1:E:144:VAL:CG1	1:E:148[B]:SER:OG	2.44	0.65
1:C:125:ILE:HD13	1:E:102:MET:HE1	1.81	0.62
1:E:184:LYS:C	1:E:186:MET:N	2.53	0.61
1:C:117:LYS:HE3	5:C:255:HOH:O	1.99	0.61
1:C:3:SER:O	1:C:26:LYS:HG3	2.02	0.59
1:C:175:ILE:HG13	1:E:101:LEU:HD23	1.84	0.59
1:E:184:LYS:C	1:E:186:MET:H	2.06	0.59
1:A:86:ARG:HD3	1:C:86:ARG:HG2	1.85	0.58

*Continued on next page...*

*Continued from previous page...*

Atom-1	Atom-2	Interatomic distance (Å)	Clash overlap (Å)
1:A:76:GLU:OE2	1:A:117:LYS:NZ	2.37	0.57
1:E:7:GLN:HE21	1:E:7:GLN:N	2.00	0.54
1:A:102[B]:MET:HE1	1:E:125:ILE:CD1	2.37	0.52
1:C:175:ILE:CG1	1:E:101:LEU:HD23	2.40	0.52
1:C:126:ILE:HA	1:C:144:VAL:HG22	1.91	0.51
1:A:7:GLN:HE21	1:A:7:GLN:HA	1.76	0.51
1:C:125:ILE:HD13	1:E:102:MET:CE	2.41	0.50
1:A:148[A]:SER:HB2	1:A:165:VAL:HG12	1.95	0.49
1:E:7:GLN:NE2	1:E:7:GLN:H	2.03	0.48
1:E:144:VAL:HG12	1:E:148[B]:SER:OG	2.11	0.48
1:A:160:TYR:HB3	1:A:165:VAL:HB	1.94	0.48
1:C:125:ILE:CD1	1:E:102:MET:HE1	2.42	0.48
1:A:93:ILE:HG22	4:E:310:3HC:H22	1.95	0.47
1:C:86:ARG:HD3	1:E:86:ARG:HG2	1.95	0.47
1:E:32:ASN:O	1:E:35:VAL:HG22	2.15	0.47
1:C:102[A]:MET:HB3	1:C:102[A]:MET:HE3	1.17	0.46
1:A:148[B]:SER:HB3	1:A:165:VAL:HG12	1.98	0.46
1:A:94:ASP:HB3	1:A:102[B]:MET:HG2	1.96	0.46
1:E:76:GLU:OE2	1:E:117:LYS:HD2	2.15	0.46
1:A:102[B]:MET:HE3	1:A:102[B]:MET:HB3	1.39	0.46
1:C:160:TYR:HB3	1:C:165:VAL:HB	1.98	0.45
1:C:16:LEU:HD23	1:C:37[A]:SER:OG	2.17	0.44
1:E:133:PHE:HD2	1:E:151:LYS:HG2	1.81	0.44
1:E:11:LYS:HA	1:E:11:LYS:HD2	1.63	0.44
1:C:53:LYS:O	1:C:74:GLY:HA2	2.17	0.44
1:E:102:MET:HE3	1:E:102:MET:HB3	1.27	0.44
1:A:144:VAL:CG1	1:A:148[A]:SER:OG	2.66	0.44
1:A:79:ASP:O	1:A:80:PHE:HB2	2.18	0.43
1:E:32:ASN:N	1:E:33:PRO:CD	2.82	0.43
1:E:175:ILE:HD13	1:E:175:ILE:HG21	1.74	0.43
1:C:7:GLN:CA	1:C:7:GLN:HE21	2.30	0.43
1:C:88:ILE:HG21	1:C:90:TYR:CZ	2.54	0.42
1:E:15:PHE:O	1:E:16:LEU:C	2.57	0.42
1:E:148[B]:SER:HB2	1:E:165:VAL:HG12	2.01	0.42
1:C:114:LYS:NZ	5:C:254:HOH:O	2.49	0.42
1:E:79:ASP:O	1:E:80:PHE:HB2	2.20	0.42
1:A:157:TRP:CE3	1:A:173:ARG:HG2	2.55	0.41
1:A:23:LEU:O	1:A:43:ARG:HA	2.20	0.41
1:C:3:SER:HB2	1:E:31:TYR:OH	2.20	0.41
1:E:93:ILE:HD12	5:E:263:HOH:O	2.20	0.41
1:A:53:LYS:O	1:A:74:GLY:HA2	2.20	0.41

*Continued on next page...*

Continued from previous page...

Atom-1	Atom-2	Interatomic distance (Å)	Clash overlap (Å)
4:C:310:3HC:O5A	5:C:425:HOH:O	2.21	0.41
1:A:175:ILE:HG23	1:C:98:GLY:O	2.21	0.41
1:C:94:ASP:HB2	1:C:102[B]:MET:HE2	2.02	0.41
1:E:9:GLU:HA	1:E:12:LYS:HG3	2.02	0.41
1:A:93:ILE:HD12	5:A:270:HOH:O	2.19	0.41
1:C:29:SER:HB3	1:C:31:TYR:CE2	2.55	0.41
1:E:117:LYS:HE2	1:E:117:LYS:HB3	1.90	0.40
1:C:16:LEU:HB2	1:C:34:GLY:O	2.21	0.40

There are no symmetry-related clashes.

## 5.3 Torsion angles [i](#)

### 5.3.1 Protein backbone [i](#)

In the following table, the Percentiles column shows the percent Ramachandran outliers of the chain as a percentile score with respect to all X-ray entries followed by that with respect to entries of similar resolution.

The Analysed column shows the number of residues for which the backbone conformation was analysed, and the total number of residues.

Mol	Chain	Analysed	Favoured	Allowed	Outliers	Percentiles	
1	A	190/205 (93%)	180 (95%)	10 (5%)	0	100	100
1	C	190/205 (93%)	184 (97%)	6 (3%)	0	100	100
1	E	185/205 (90%)	175 (95%)	9 (5%)	1 (0%)	32	17
All	All	565/615 (92%)	539 (95%)	25 (4%)	1 (0%)	51	35

All (1) Ramachandran outliers are listed below:

Mol	Chain	Res	Type
1	E	185	SER

### 5.3.2 Protein sidechains [i](#)

In the following table, the Percentiles column shows the percent sidechain outliers of the chain as a percentile score with respect to all X-ray entries followed by that with respect to entries of similar resolution.

The Analysed column shows the number of residues for which the sidechain conformation was

analysed, and the total number of residues.

Mol	Chain	Analysed	Rotameric	Outliers	Percentiles	
1	A	163/174 (94%)	156 (96%)	7 (4%)	33	16
1	C	163/174 (94%)	152 (93%)	11 (7%)	19	6
1	E	159/174 (91%)	150 (94%)	9 (6%)	24	9
All	All	485/522 (93%)	458 (94%)	27 (6%)	26	9

All (27) residues with a non-rotameric sidechain are listed below:

Mol	Chain	Res	Type
1	A	1	MET
1	A	7	GLN
1	A	11	LYS
1	A	32	ASN
1	A	184	LYS
1	A	185	SER
1	A	186	MET
1	C	1	MET
1	C	7	GLN
1	C	11	LYS
1	C	32	ASN
1	C	72	GLU
1	C	108	ASN
1	C	109	GLN
1	C	114	LYS
1	C	152[A]	GLU
1	C	152[B]	GLU
1	C	186	MET
1	E	1[A]	MET
1	E	1[B]	MET
1	E	3	SER
1	E	7	GLN
1	E	11	LYS
1	E	12	LYS
1	E	32	ASN
1	E	37	SER
1	E	177	GLU

Some sidechains can be flipped to improve hydrogen bonding and reduce clashes. All (11) such sidechains are listed below:

Mol	Chain	Res	Type
1	A	7	GLN
1	A	21	ASN
1	A	32	ASN
1	A	41	ASN
1	A	108	ASN
1	C	7	GLN
1	C	32	ASN
1	C	109	GLN
1	C	180	ASN
1	E	7	GLN
1	E	32	ASN

### 5.3.3 RNA ⓘ

There are no RNA molecules in this entry.

## 5.4 Non-standard residues in protein, DNA, RNA chains ⓘ

There are no non-standard protein/DNA/RNA residues in this entry.

## 5.5 Carbohydrates ⓘ

There are no carbohydrates in this entry.

## 5.6 Ligand geometry ⓘ

Of 7 ligands modelled in this entry, 1 is monoatomic - leaving 6 for Mogul analysis.

In the following table, the Counts columns list the number of bonds (or angles) for which Mogul statistics could be retrieved, the number of bonds (or angles) that are observed in the model and the number of bonds (or angles) that are defined in the chemical component dictionary. The Link column lists molecule types, if any, to which the group is linked. The Z score for a bond length (or angle) is the number of standard deviations the observed value is removed from the expected value. A bond length (or angle) with  $|Z| > 2$  is considered an outlier worth inspection. RMSZ is the root-mean-square of all Z scores of the bond lengths (or angles).

Mol	Type	Chain	Res	Link	Bond lengths			Bond angles		
					Counts	RMSZ	# $ Z  > 2$	Counts	RMSZ	# $ Z  > 2$
3	TYD	A	301	-	24,26,26	2.03	2 (8%)	28,40,40	2.23	8 (28%)
4	3HC	A	310	-	48,56,56	0.92	2 (4%)	56,83,83	2.35	9 (16%)
3	TYD	C	301	-	24,26,26	2.05	2 (8%)	28,40,40	2.27	6 (21%)

Mol	Type	Chain	Res	Link	Bond lengths			Bond angles		
					Counts	RMSZ	# Z  > 2	Counts	RMSZ	# Z  > 2
4	3HC	C	310	-	48,56,56	1.03	4 (8%)	56,83,83	2.21	12 (21%)
3	TYD	E	301	-	24,26,26	1.99	2 (8%)	28,40,40	1.90	6 (21%)
4	3HC	E	310	-	48,56,56	0.89	2 (4%)	56,83,83	2.15	13 (23%)

In the following table, the Chirals column lists the number of chiral outliers, the number of chiral centers analysed, the number of these observed in the model and the number defined in the chemical component dictionary. Similar counts are reported in the Torsion and Rings columns. '-' means no outliers of that kind were identified.

Mol	Type	Chain	Res	Link	Chirals	Torsions	Rings
3	TYD	A	301	-	-	0/16/28/28	0/2/2/2
4	3HC	A	310	-	-	0/50/71/71	0/3/3/3
3	TYD	C	301	-	-	0/16/28/28	0/2/2/2
4	3HC	C	310	-	-	0/50/71/71	0/3/3/3
3	TYD	E	301	-	-	0/16/28/28	0/2/2/2
4	3HC	E	310	-	-	0/50/71/71	0/3/3/3

All (14) bond length outliers are listed below:

Mol	Chain	Res	Type	Atoms	Z	Observed(Å)	Ideal(Å)
3	C	301	TYD	C6-N1	-8.61	1.35	1.46
3	A	301	TYD	C6-N1	-8.52	1.35	1.46
3	E	301	TYD	C6-N1	-8.29	1.35	1.46
4	A	310	3HC	C1-S1P	-4.48	1.67	1.76
4	E	310	3HC	C1-S1P	-3.69	1.68	1.76
3	A	301	TYD	C6-C5	-3.54	1.40	1.51
3	E	301	TYD	C6-C5	-3.51	1.40	1.51
3	C	301	TYD	C6-C5	-3.41	1.40	1.51
4	C	310	3HC	C1-S1P	-3.36	1.69	1.76
4	A	310	3HC	P3B-O3B	2.00	1.63	1.59
4	C	310	3HC	C2A-N3A	2.40	1.36	1.32
4	E	310	3HC	P3B-O3B	2.46	1.63	1.59
4	C	310	3HC	P3B-O3B	2.52	1.64	1.59
4	C	310	3HC	O4B-C1B	2.68	1.45	1.41

All (54) bond angle outliers are listed below:

Mol	Chain	Res	Type	Atoms	Z	Observed(°)	Ideal(°)
4	A	310	3HC	N3A-C2A-N1A	-10.25	119.93	128.86
4	E	310	3HC	N3A-C2A-N1A	-8.13	121.78	128.86
4	C	310	3HC	N3A-C2A-N1A	-8.01	121.88	128.86

*Continued on next page...*

*Continued from previous page...*

Mol	Chain	Res	Type	Atoms	Z	Observed(°)	Ideal(°)
4	E	310	3HC	O1-C1-S1P	-5.52	117.06	122.84
4	A	310	3HC	O1-C1-S1P	-5.33	117.26	122.84
4	C	310	3HC	O1-C1-S1P	-4.89	117.72	122.84
3	A	301	TYD	C4-N3-C2	-4.85	120.93	126.86
3	E	301	TYD	C4-N3-C2	-4.79	121.00	126.86
4	A	310	3HC	O2B-C2B-C1B	-4.74	96.79	111.61
3	C	301	TYD	C4-N3-C2	-4.35	121.54	126.86
4	C	310	3HC	C6P-C7P-N8P	-3.44	104.76	111.87
4	A	310	3HC	C2P-C3P-N4P	-3.32	105.16	112.49
3	C	301	TYD	C2'-C1'-N1	-3.25	111.64	115.61
4	C	310	3HC	C4A-C5A-N7A	-3.16	106.36	109.41
4	A	310	3HC	C6P-C7P-N8P	-2.80	106.08	111.87
3	E	301	TYD	O2-C2-N3	-2.48	116.80	121.50
4	E	310	3HC	O2B-C2B-C1B	-2.48	103.87	111.61
3	C	301	TYD	O2-C2-N3	-2.47	116.82	121.50
4	C	310	3HC	O2B-C2B-C1B	-2.37	104.20	111.61
3	A	301	TYD	O2-C2-N3	-2.30	117.14	121.50
4	C	310	3HC	O3-C3-C4	-2.26	99.09	109.46
3	E	301	TYD	O3A-PB-O1B	-2.26	97.53	111.44
3	A	301	TYD	C2'-C1'-N1	-2.21	112.90	115.61
4	E	310	3HC	C6P-C5P-N4P	-2.20	112.69	116.49
4	E	310	3HC	C6P-C7P-N8P	-2.16	107.39	111.87
4	E	310	3HC	O3-C3-C4	-2.12	99.73	109.46
4	E	310	3HC	O8A-P3B-O3B	-2.08	96.55	106.00
4	C	310	3HC	O5A-P2A-O6A	-2.05	98.47	108.14
4	E	310	3HC	C3P-N4P-C5P	2.00	126.69	122.84
4	C	310	3HC	O9A-P3B-O7A	2.00	118.33	110.50
4	A	310	3HC	O9A-P3B-O7A	2.06	118.58	110.50
4	E	310	3HC	C3-C2-C1	2.12	120.09	114.13
3	A	301	TYD	C6-N1-C1'	2.18	124.00	119.92
3	A	301	TYD	O3B-PB-O2B	2.23	116.62	107.61
4	E	310	3HC	O5A-P2A-O4A	2.41	124.77	112.28
3	E	301	TYD	C6-C5-C4	2.51	118.65	111.69
4	E	310	3HC	O9A-P3B-O8A	2.55	117.91	107.61
4	A	310	3HC	O9A-P3B-O8A	2.64	118.25	107.61
4	C	310	3HC	C4B-O4B-C1B	3.36	113.35	109.77
4	C	310	3HC	C3-C2-C1	3.54	124.09	114.13
4	C	310	3HC	O9A-P3B-O8A	3.79	122.92	107.61
4	E	310	3HC	CEP-CBP-CAP	3.87	115.53	108.82
4	A	310	3HC	C4B-O4B-C1B	4.73	114.80	109.77
3	E	301	TYD	N3-C2-N1	4.82	121.53	116.73
3	A	301	TYD	N3-C2-N1	4.83	121.54	116.73

*Continued on next page...*



*Continued from previous page...*

Mol	Chain	Res	Type	Atoms	Z	Observed(°)	Ideal(°)
3	E	301	TYD	C5M-C5-C6	4.96	123.10	112.41
3	C	301	TYD	N3-C2-N1	5.02	121.73	116.73
3	A	301	TYD	C5M-C5-C6	5.28	123.77	112.41
3	A	301	TYD	O4'-C1'-N1	5.32	115.19	108.41
3	C	301	TYD	C5M-C5-C6	5.42	124.08	112.41
3	C	301	TYD	O4'-C1'-N1	5.69	115.66	108.41
4	A	310	3HC	C2-C1-S1P	6.13	119.42	113.31
4	E	310	3HC	C2-C1-S1P	7.24	120.53	113.31
4	C	310	3HC	C2-C1-S1P	8.03	121.32	113.31

There are no chirality outliers.

There are no torsion outliers.

There are no ring outliers.

2 monomers are involved in 2 short contacts:

Mol	Chain	Res	Type	Clashes	Symm-Clashes
4	C	310	3HC	1	0
4	E	310	3HC	1	0

## 5.7 Other polymers [i](#)

There are no such residues in this entry.

## 5.8 Polymer linkage issues [i](#)

There are no chain breaks in this entry.

## 6 Fit of model and data

### 6.1 Protein, DNA and RNA chains

In the following table, the column labelled ‘#RSRZ > 2’ contains the number (and percentage) of RSRZ outliers, followed by percent RSRZ outliers for the chain as percentile scores relative to all X-ray entries and entries of similar resolution. The OWAB column contains the minimum, median, 95<sup>th</sup> percentile and maximum values of the occupancy-weighted average B-factor per residue. The column labelled ‘Q < 0.9’ lists the number of (and percentage) of residues with an average occupancy less than 0.9.

Mol	Chain	Analysed	<RSRZ>	#RSRZ > 2			OWAB(Å <sup>2</sup> )	Q < 0.9
1	A	186/205 (90%)	-0.08	6 (3%)	48	43	10, 20, 41, 63	0
1	C	188/205 (91%)	-0.11	4 (2%)	64	60	11, 22, 45, 75	0
1	E	186/205 (90%)	0.08	12 (6%)	20	16	10, 23, 49, 68	0
All	All	560/615 (91%)	-0.04	22 (3%)	40	35	10, 22, 46, 75	0

All (22) RSRZ outliers are listed below:

Mol	Chain	Res	Type	RSRZ
1	A	1	MET	7.0
1	C	1	MET	5.0
1	C	188	SER	4.6
1	C	187	ASN	4.0
1	E	8	GLU	3.8
1	E	73	VAL	3.7
1	E	7	GLN	3.4
1	E	11	LYS	3.3
1	C	186	MET	2.8
1	A	186	MET	2.7
1	A	184	LYS	2.6
1	E	1[A]	MET	2.5
1	E	12	LYS	2.5
1	E	13	ILE	2.4
1	E	186	MET	2.4
1	E	10	LEU	2.3
1	A	8	GLU	2.2
1	A	2	ASN	2.2
1	A	185	SER	2.2
1	E	72	GLU	2.1
1	E	185	SER	2.0
1	E	18	VAL	2.0

## 6.2 Non-standard residues in protein, DNA, RNA chains [i](#)

There are no non-standard protein/DNA/RNA residues in this entry.

## 6.3 Carbohydrates [i](#)

There are no carbohydrates in this entry.

## 6.4 Ligands [i](#)

In the following table, the Atoms column lists the number of modelled atoms in the group and the number defined in the chemical component dictionary. LLDF column lists the quality of electron density of the group with respect to its neighbouring residues in protein, DNA or RNA chains. The B-factors column lists the minimum, median, 95<sup>th</sup> percentile and maximum values of B factors of atoms in the group. The column labelled 'Q< 0.9' lists the number of atoms with occupancy less than 0.9.

Mol	Type	Chain	Res	Atoms	RSCC	RSR	LLDF	B-factors(Å <sup>2</sup> )	Q<0.9
3	TYD	A	301	25/25	0.85	0.21	0.77	32,67,90,93	0
3	TYD	C	301	25/25	0.91	0.15	0.33	30,49,68,69	0
3	TYD	E	301	25/25	0.91	0.14	0.26	27,38,51,58	0
4	3HC	C	310	54/54	0.96	0.09	-0.45	11,19,32,37	0
4	3HC	A	310	54/54	0.96	0.07	-0.72	11,18,33,37	0
4	3HC	E	310	54/54	0.97	0.07	-0.82	12,18,28,38	0
2	CL	A	189	1/1	1.00	0.09	-2.59	17,17,17,17	0

## 6.5 Other polymers [i](#)

There are no such residues in this entry.