



Full wwPDB X-ray Structure Validation Report ⓘ

Oct 2, 2017 – 02:41 PM EDT

PDB ID : 5VCX
Title : CRYSTAL STRUCTURE OF HUMAN MYT1 KINASE DOMAIN (UNTREATED) IN COMPLEX WITH SARACATINIB
Authors : Zhu, J.-Y.; Schonbrunn, E.
Deposited on : unknown
Resolution : 2.70 Å(reported)

This is a Full wwPDB X-ray Structure Validation Report for a publicly released PDB entry.

We welcome your comments at validation@mail.wwpdb.org

A user guide is available at

<http://wwpdb.org/validation/2016/XrayValidationReportHelp>

with specific help available everywhere you see the ⓘ symbol.

The following versions of software and data (see [references ⓘ](#)) were used in the production of this report:

MolProbity : 4.02b-467
Mogul : 1.7.2 (RC1), CSD as538be (2017)
Xtriage (Phenix) : 1.9-1692
EDS : rb-20030345
Percentile statistics : 20161228.v01 (using entries in the PDB archive December 28th 2016)
Refmac : 5.8.0135
CCP4 : 6.5.0
Ideal geometry (proteins) : Engh & Huber (2001)
Ideal geometry (DNA, RNA) : Parkinson et al. (1996)
Validation Pipeline (wwPDB-VP) : rb-20030345

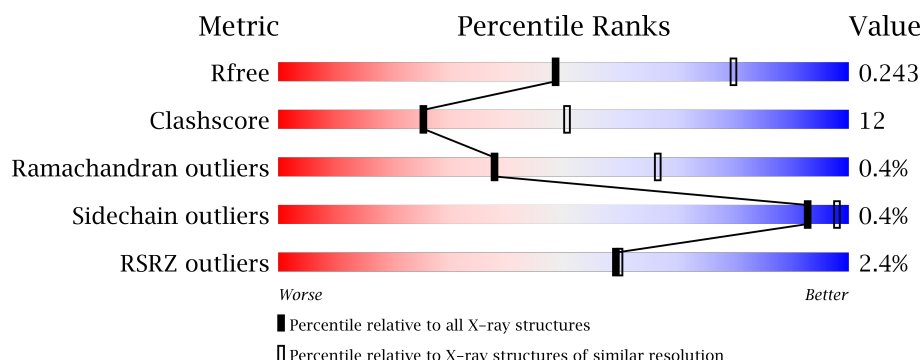
1 Overall quality at a glance

The following experimental techniques were used to determine the structure:

X-RAY DIFFRACTION

The reported resolution of this entry is 2.70 Å.

Percentile scores (ranging between 0-100) for global validation metrics of the entry are shown in the following graphic. The table shows the number of entries on which the scores are based.



Metric	Whole archive (#Entries)	Similar resolution (#Entries, resolution range(Å))
R_{free}	100719	2259 (2.70-2.70)
Clashscore	112137	2590 (2.70-2.70)
Ramachandran outliers	110173	2550 (2.70-2.70)
Sidechain outliers	110143	2550 (2.70-2.70)
RSRZ outliers	101464	2275 (2.70-2.70)

The table below summarises the geometric issues observed across the polymeric chains and their fit to the electron density. The red, orange, yellow and green segments on the lower bar indicate the fraction of residues that contain outliers for ≥ 3 , 2, 1 and 0 types of geometric quality criteria. A grey segment represents the fraction of residues that are not modelled. The numeric value for each fraction is indicated below the corresponding segment, with a dot representing fractions $\leq 5\%$. The upper red bar (where present) indicates the fraction of residues that have poor fit to the electron density. The numeric value is given above the bar.

Mol	Chain	Length	Quality of chain
1	A	311	<div> <div>2%</div> <div>80%</div> <div>11%</div> <div>8%</div> </div>

The following table lists non-polymeric compounds, carbohydrate monomers and non-standard residues in protein, DNA, RNA chains that are outliers for geometric or electron-density-fit criteria:

Mol	Type	Chain	Res	Chirality	Geometry	Clashes	Electron density
3	EDO	A	402	-	-	-	X

2 Entry composition

There are 4 unique types of molecules in this entry. The entry contains 2303 atoms, of which 0 are hydrogens and 0 are deuteriums.

In the tables below, the ZeroOcc column contains the number of atoms modelled with zero occupancy, the AltConf column contains the number of residues with at least one atom in alternate conformation and the Trace column contains the number of residues modelled with at most 2 atoms.

- Molecule 1 is a protein called Membrane-associated tyrosine- and threonine-specific cdc2-inhibitory kinase.

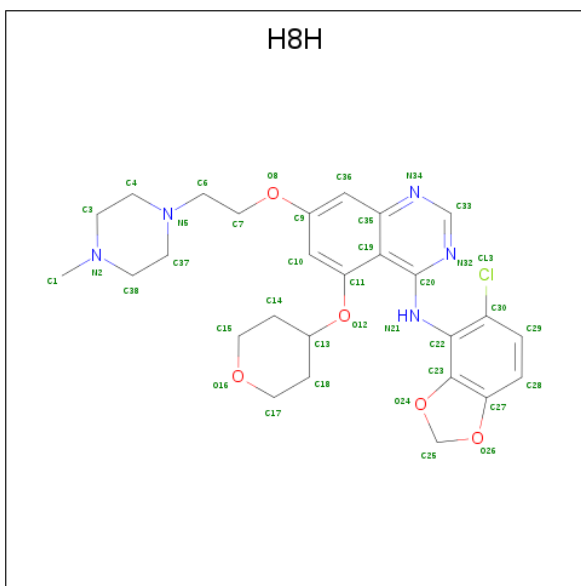
Mol	Chain	Residues	Atoms					ZeroOcc	AltConf	Trace
1	A	287	Total	C	N	O	S	0	0	0
			2229	1406	402	410	11			

There are 23 discrepancies between the modelled and reference sequences:

Chain	Residue	Modelled	Actual	Comment	Reference
A	52	MET	-	initiating methionine	UNP Q99640
A	53	HIS	-	expression tag	UNP Q99640
A	54	HIS	-	expression tag	UNP Q99640
A	55	HIS	-	expression tag	UNP Q99640
A	56	HIS	-	expression tag	UNP Q99640
A	57	HIS	-	expression tag	UNP Q99640
A	58	HIS	-	expression tag	UNP Q99640
A	59	SER	-	expression tag	UNP Q99640
A	60	SER	-	expression tag	UNP Q99640
A	61	GLY	-	expression tag	UNP Q99640
A	62	VAL	-	expression tag	UNP Q99640
A	63	ASP	-	expression tag	UNP Q99640
A	64	LEU	-	expression tag	UNP Q99640
A	65	GLY	-	expression tag	UNP Q99640
A	66	THR	-	expression tag	UNP Q99640
A	67	GLU	-	expression tag	UNP Q99640
A	68	ASN	-	expression tag	UNP Q99640
A	69	LEU	-	expression tag	UNP Q99640
A	70	TYR	-	expression tag	UNP Q99640
A	71	PHE	-	expression tag	UNP Q99640
A	72	GLN	-	expression tag	UNP Q99640
A	73	SER	-	expression tag	UNP Q99640
A	74	MET	-	expression tag	UNP Q99640

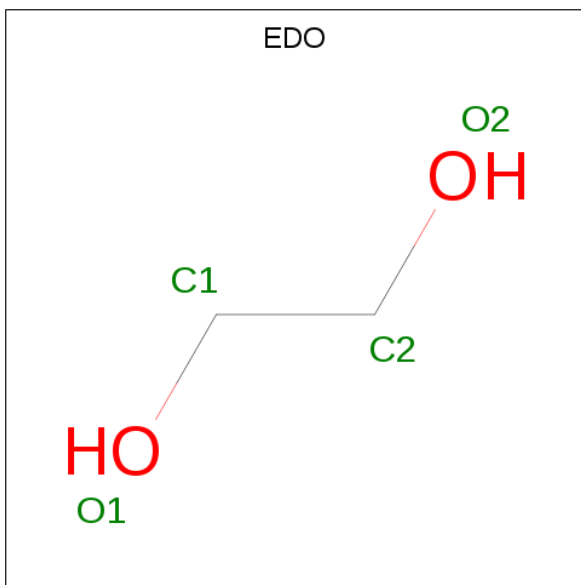
- Molecule 2 is N-(5-CHLORO-1,3-BENZODIOXOL-4-YL)-7-[2-(4-METHYLPIPERAZIN-1-YL)ETHOXY]-5-(TETRAHYDRO-2H-PYRAN-4-YLOXY)QUINAZOLIN-4-AMINE

(three-letter code: H8H) (formula: $C_{27}H_{32}ClN_5O_5$).



Mol	Chain	Residues	Atoms					ZeroOcc	AltConf
2	A	1	Total	C	Cl	N	O	0	0
			38	27	1	5	5		

- Molecule 3 is 1,2-ETHANEDIOL (three-letter code: EDO) (formula: $C_2H_6O_2$).



Mol	Chain	Residues	Atoms			ZeroOcc	AltConf
3	A	1	Total	C	O	0	0
			4	2	2		

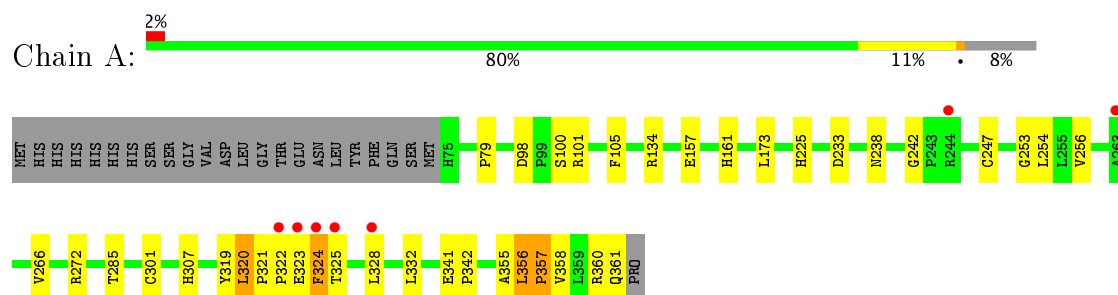
- Molecule 4 is water.

Mol	Chain	Residues	Atoms		ZeroOcc	AltConf
4	A	32	Total 32	O 32	0	0

3 Residue-property plots [i](#)

These plots are drawn for all protein, RNA and DNA chains in the entry. The first graphic for a chain summarises the proportions of the various outlier classes displayed in the second graphic. The second graphic shows the sequence view annotated by issues in geometry and electron density. Residues are color-coded according to the number of geometric quality criteria for which they contain at least one outlier: green = 0, yellow = 1, orange = 2 and red = 3 or more. A red dot above a residue indicates a poor fit to the electron density ($RSRZ > 2$). Stretches of 2 or more consecutive residues without any outlier are shown as a green connector. Residues present in the sample, but not in the model, are shown in grey.

- Molecule 1: Membrane-associated tyrosine- and threonine-specific cdc2-inhibitory kinase



4 Data and refinement statistics

Property	Value	Source
Space group	P 21 21 21	Depositor
Cell constants a, b, c, α , β , γ	56.48Å 69.43Å 86.53Å 90.00° 90.00° 90.00°	Depositor
Resolution (Å)	43.81 – 2.70 43.81 – 2.70	Depositor EDS
% Data completeness (in resolution range)	99.2 (43.81-2.70) 99.2 (43.81-2.70)	Depositor EDS
R_{merge}	0.05	Depositor
R_{sym}	(Not available)	Depositor
$\langle I/\sigma(I) \rangle$ ¹	4.30 (at 2.69Å)	Xtriage
Refinement program	PHENIX 1.9_1692	Depositor
R, R_{free}	0.201 , 0.244 0.199 , 0.243	Depositor DCC
R_{free} test set	485 reflections (4.99%)	DCC
Wilson B-factor (Å ²)	49.5	Xtriage
Anisotropy	0.569	Xtriage
Bulk solvent k_{sol} (e/Å ³), B_{sol} (Å ²)	0.32 , 39.3	EDS
L-test for twinning ²	$\langle L \rangle = 0.49$, $\langle L^2 \rangle = 0.32$	Xtriage
Estimated twinning fraction	No twinning to report.	Xtriage
F_o, F_c correlation	0.93	EDS
Total number of atoms	2303	wwPDB-VP
Average B, all atoms (Å ²)	54.0	wwPDB-VP

Xtriage's analysis on translational NCS is as follows: *The largest off-origin peak in the Patterson function is 7.38% of the height of the origin peak. No significant pseudotranslation is detected.*

¹Intensities estimated from amplitudes.

²Theoretical values of $\langle |L| \rangle$, $\langle L^2 \rangle$ for acentric reflections are 0.5, 0.333 respectively for untwinned datasets, and 0.375, 0.2 for perfectly twinned datasets.

5 Model quality [i](#)

5.1 Standard geometry [i](#)

Bond lengths and bond angles in the following residue types are not validated in this section: H8H, EDO

The Z score for a bond length (or angle) is the number of standard deviations the observed value is removed from the expected value. A bond length (or angle) with $|Z| > 5$ is considered an outlier worth inspection. RMSZ is the root-mean-square of all Z scores of the bond lengths (or angles).

Mol	Chain	Bond lengths		Bond angles	
		RMSZ	$\# Z > 5$	RMSZ	$\# Z > 5$
1	A	0.38	0/2282	0.54	2/3087 (0.1%)

There are no bond length outliers.

All (2) bond angle outliers are listed below:

Mol	Chain	Res	Type	Atoms	Z	Observed($^{\circ}$)	Ideal($^{\circ}$)
1	A	324	PHE	N-CA-C	6.71	129.12	111.00
1	A	356	LEU	C-N-CD	5.85	140.68	128.40

There are no chirality outliers.

There are no planarity outliers.

5.2 Too-close contacts [i](#)

In the following table, the Non-H and H(model) columns list the number of non-hydrogen atoms and hydrogen atoms in the chain respectively. The H(added) column lists the number of hydrogen atoms added and optimized by MolProbity. The Clashes column lists the number of clashes within the asymmetric unit, whereas Symm-Clashes lists symmetry related clashes.

Mol	Chain	Non-H	H(model)	H(added)	Clashes	Symm-Clashes
1	A	2229	0	2202	54	0
2	A	38	0	32	0	0
3	A	4	0	6	0	0
4	A	32	0	0	0	0
All	All	2303	0	2240	54	0

The all-atom clashscore is defined as the number of clashes found per 1000 atoms (including hydrogen atoms). The all-atom clashscore for this structure is 12.

All (54) close contacts within the same asymmetric unit are listed below, sorted by their clash magnitude.

Atom-1	Atom-2	Interatomic distance (Å)	Clash overlap (Å)
1:A:325:THR:HG21	1:A:328:LEU:CD2	1.51	1.41
1:A:325:THR:CG2	1:A:328:LEU:CD2	2.22	1.15
1:A:325:THR:CG2	1:A:328:LEU:HD22	1.76	1.15
1:A:325:THR:HG21	1:A:328:LEU:HD22	1.25	1.13
1:A:325:THR:HG21	1:A:328:LEU:HD23	1.23	1.12
1:A:325:THR:HG22	1:A:328:LEU:CB	1.91	0.99
1:A:322:PRO:HA	1:A:324:PHE:CE1	2.01	0.96
1:A:328:LEU:CD1	1:A:332:LEU:HD23	1.99	0.92
1:A:328:LEU:HD11	1:A:332:LEU:HD23	1.51	0.92
1:A:325:THR:HG22	1:A:328:LEU:HB3	1.49	0.92
1:A:357:PRO:HD2	1:A:358:VAL:H	1.46	0.81
1:A:325:THR:CG2	1:A:328:LEU:HD23	2.03	0.79
1:A:328:LEU:HD11	1:A:332:LEU:CD2	2.12	0.79
1:A:328:LEU:HD11	1:A:332:LEU:CG	2.19	0.73
1:A:325:THR:HG23	1:A:328:LEU:HD22	1.73	0.69
1:A:325:THR:CG2	1:A:328:LEU:CB	2.69	0.69
1:A:325:THR:HG22	1:A:328:LEU:HB2	1.73	0.68
1:A:319:TYR:OH	1:A:322:PRO:HG3	1.96	0.65
1:A:325:THR:O	1:A:325:THR:HG22	1.98	0.64
1:A:233:ASP:HB2	1:A:254:LEU:HD12	1.81	0.63
1:A:357:PRO:CD	1:A:358:VAL:H	2.12	0.63
1:A:323:GLU:O	1:A:324:PHE:HB2	2.01	0.59
1:A:233:ASP:O	1:A:238:ASN:ND2	2.38	0.56
1:A:256:VAL:HG11	1:A:266:VAL:HG13	1.88	0.55
1:A:324:PHE:O	1:A:325:THR:HB	2.09	0.53
1:A:357:PRO:CD	1:A:358:VAL:N	2.72	0.52
1:A:321:PRO:HG2	1:A:321:PRO:O	2.10	0.51
1:A:321:PRO:O	1:A:324:PHE:CD1	2.63	0.51
1:A:321:PRO:O	1:A:324:PHE:HD1	1.94	0.51
1:A:328:LEU:HD11	1:A:332:LEU:HG	1.90	0.50
1:A:321:PRO:HG2	1:A:324:PHE:H	1.76	0.50
1:A:325:THR:CG2	1:A:328:LEU:HB2	2.39	0.50
1:A:319:TYR:O	1:A:320:LEU:HD12	2.12	0.49
1:A:161:HIS:HB3	1:A:173:LEU:HD22	1.94	0.49
1:A:242:GLY:H	1:A:247:CYS:HA	1.77	0.49
1:A:301:CYS:SG	1:A:325:THR:HA	2.53	0.48
1:A:98:ASP:HB2	1:A:101:ARG:HH21	1.80	0.47
1:A:320:LEU:HG	1:A:321:PRO:HD2	1.97	0.46
1:A:357:PRO:HD2	1:A:358:VAL:N	2.23	0.46
1:A:355:ALA:C	1:A:356:LEU:O	2.49	0.46

Continued on next page...

Continued from previous page...

Atom-1	Atom-2	Interatomic distance (Å)	Clash overlap (Å)
1:A:161:HIS:CD2	1:A:173:LEU:HB2	2.51	0.45
1:A:325:THR:CG2	1:A:328:LEU:CG	2.93	0.45
1:A:134:ARG:HG2	1:A:134:ARG:HH21	1.82	0.44
1:A:321:PRO:O	1:A:324:PHE:N	2.51	0.43
1:A:320:LEU:HA	1:A:320:LEU:HD12	1.79	0.43
1:A:319:TYR:CG	1:A:320:LEU:N	2.86	0.43
1:A:157:GLU:HG3	1:A:253:GLY:HA2	2.01	0.43
1:A:341:GLU:HA	1:A:342:PRO:HD3	1.93	0.42
1:A:360:ARG:HG2	1:A:361:GLN:N	2.35	0.42
1:A:79:PRO:HG3	1:A:105:PHE:HB2	2.02	0.42
1:A:225:HIS:CG	1:A:285:THR:HB	2.55	0.42
1:A:272:ARG:HD3	1:A:307:HIS:CE1	2.55	0.41
1:A:98:ASP:OD1	1:A:100:SER:HB3	2.21	0.41
1:A:325:THR:O	1:A:325:THR:CG2	2.65	0.41

There are no symmetry-related clashes.

5.3 Torsion angles [i](#)

5.3.1 Protein backbone [i](#)

In the following table, the Percentiles column shows the percent Ramachandran outliers of the chain as a percentile score with respect to all X-ray entries followed by that with respect to entries of similar resolution.

The Analysed column shows the number of residues for which the backbone conformation was analysed, and the total number of residues.

Mol	Chain	Analysed	Favoured	Allowed	Outliers	Percentiles
1	A	285/311 (92%)	273 (96%)	11 (4%)	1 (0%)	38 66

All (1) Ramachandran outliers are listed below:

Mol	Chain	Res	Type
1	A	357	PRO

5.3.2 Protein sidechains [i](#)

In the following table, the Percentiles column shows the percent sidechain outliers of the chain as a percentile score with respect to all X-ray entries followed by that with respect to entries of similar

resolution.

The Analysed column shows the number of residues for which the sidechain conformation was analysed, and the total number of residues.

Mol	Chain	Analysed	Rotameric	Outliers	Percentiles	
1	A	234/256 (91%)	233 (100%)	1 (0%)	93	98

All (1) residues with a non-rotameric sidechain are listed below:

Mol	Chain	Res	Type
1	A	320	LEU

Some sidechains can be flipped to improve hydrogen bonding and reduce clashes. There are no such sidechains identified.

5.3.3 RNA ⓘ

There are no RNA molecules in this entry.

5.4 Non-standard residues in protein, DNA, RNA chains ⓘ

There are no non-standard protein/DNA/RNA residues in this entry.

5.5 Carbohydrates ⓘ

There are no carbohydrates in this entry.

5.6 Ligand geometry ⓘ

2 ligands are modelled in this entry.

In the following table, the Counts columns list the number of bonds (or angles) for which Mogul statistics could be retrieved, the number of bonds (or angles) that are observed in the model and the number of bonds (or angles) that are defined in the Chemical Component Dictionary. The Link column lists molecule types, if any, to which the group is linked. The Z score for a bond length (or angle) is the number of standard deviations the observed value is removed from the expected value. A bond length (or angle) with $|Z| > 2$ is considered an outlier worth inspection. RMSZ is the root-mean-square of all Z scores of the bond lengths (or angles).

Mol	Type	Chain	Res	Link	Bond lengths			Bond angles		
					Counts	RMSZ	# $ Z > 2$	Counts	RMSZ	# $ Z > 2$
2	H8H	A	401	-	43,43,43	1.25	4 (9%)	53,60,60	3.05	17 (32%)

Mol	Type	Chain	Res	Link	Bond lengths			Bond angles		
					Counts	RMSZ	# Z > 2	Counts	RMSZ	# Z > 2
3	EDO	A	402	-	3,3,3	0.47	0	2,2,2	0.30	0

In the following table, the Chirals column lists the number of chiral outliers, the number of chiral centers analysed, the number of these observed in the model and the number defined in the Chemical Component Dictionary. Similar counts are reported in the Torsion and Rings columns. '-' means no outliers of that kind were identified.

Mol	Type	Chain	Res	Link	Chirals	Torsions	Rings
2	H8H	A	401	-	-	0/14/38/38	0/6/6/6
3	EDO	A	402	-	-	0/1/1/1	0/0/0/0

All (4) bond length outliers are listed below:

Mol	Chain	Res	Type	Atoms	Z	Observed(Å)	Ideal(Å)
2	A	401	H8H	O26-C27	-2.31	1.35	1.38
2	A	401	H8H	C14-C13	2.00	1.56	1.51
2	A	401	H8H	C10-C11	2.14	1.44	1.37
2	A	401	H8H	C18-C13	2.40	1.57	1.51

All (17) bond angle outliers are listed below:

Mol	Chain	Res	Type	Atoms	Z	Observed(°)	Ideal(°)
2	A	401	H8H	N34-C33-N32	-11.58	118.77	128.86
2	A	401	H8H	C19-C20-N32	-4.32	118.42	121.37
2	A	401	H8H	C30-C22-N21	-2.45	118.52	122.03
2	A	401	H8H	C25-O26-C27	-2.35	102.20	105.35
2	A	401	H8H	C36-C9-C10	-2.11	118.70	121.30
2	A	401	H8H	N21-C20-N32	-2.05	116.95	118.82
2	A	401	H8H	O26-C25-O24	2.10	111.39	108.10
2	A	401	H8H	C22-N21-C20	2.20	127.49	124.55
2	A	401	H8H	C9-C36-C35	2.27	120.56	119.13
2	A	401	H8H	C15-C14-C13	2.41	112.65	109.84
2	A	401	H8H	C38-N2-C3	2.53	112.84	109.47
2	A	401	H8H	O12-C11-C19	2.76	119.19	114.82
2	A	401	H8H	O26-C27-C23	3.24	112.81	109.71
2	A	401	H8H	C17-C18-C13	5.33	116.04	109.84
2	A	401	H8H	C19-C20-N21	5.58	124.63	119.66
2	A	401	H8H	C33-N34-C35	5.82	121.36	115.27
2	A	401	H8H	C33-N32-C20	11.85	124.25	116.53

There are no chirality outliers.

There are no torsion outliers.

There are no ring outliers.

No monomer is involved in short contacts.

5.7 Other polymers

There are no such residues in this entry.

5.8 Polymer linkage issues

There are no chain breaks in this entry.

6 Fit of model and data [i](#)

6.1 Protein, DNA and RNA chains [i](#)

In the following table, the column labelled ‘#RSRZ> 2’ contains the number (and percentage) of RSRZ outliers, followed by percent RSRZ outliers for the chain as percentile scores relative to all X-ray entries and entries of similar resolution. The OWAB column contains the minimum, median, 95th percentile and maximum values of the occupancy-weighted average B-factor per residue. The column labelled ‘Q< 0.9’ lists the number of (and percentage) of residues with an average occupancy less than 0.9.

Mol	Chain	Analysed	<RSRZ>	#RSRZ>2	OWAB(Å ²)	Q<0.9
1	A	287/311 (92%)	-0.10	7 (2%) 59 60	30, 47, 112, 202	0

All (7) RSRZ outliers are listed below:

Mol	Chain	Res	Type	RSRZ
1	A	263	ALA	7.7
1	A	322	PRO	4.4
1	A	244	ARG	3.8
1	A	325	THR	3.5
1	A	324	PHE	2.8
1	A	323	GLU	2.5
1	A	328	LEU	2.1

6.2 Non-standard residues in protein, DNA, RNA chains [i](#)

There are no non-standard protein/DNA/RNA residues in this entry.

6.3 Carbohydrates [i](#)

There are no carbohydrates in this entry.

6.4 Ligands [i](#)

In the following table, the Atoms column lists the number of modelled atoms in the group and the number defined in the chemical component dictionary. LLDF column lists the quality of electron density of the group with respect to its neighbouring residues in protein, DNA or RNA chains. The B-factors column lists the minimum, median, 95th percentile and maximum values of B factors of atoms in the group. The column labelled ‘Q< 0.9’ lists the number of atoms with occupancy less than 0.9.

Mol	Type	Chain	Res	Atoms	RSCC	RSR	LLDF	B-factors(\AA^2)	Q<0.9
3	EDO	A	402	4/4	0.59	0.26	7.90	51,51,51,52	0
2	H8H	A	401	38/38	0.96	0.17	0.56	23,38,53,55	0

6.5 Other polymers [i](#)

There are no such residues in this entry.