



Full wwPDB X-ray Structure Validation Report ⓘ

Feb 14, 2017 – 01:28 am GMT

PDB ID : 3VG9
Title : Crystal structure of human adenosine A2A receptor with an allosteric inverse-agonist antibody at 2.7 Å resolution
Authors : Hino, T.; Arakawa, T.; Iwanari, H.; Yurugi-Kobayashi, T.; Ikeda-Suno, C.; Nakada-Nakura, Y.; Kusano-Arai, O.; Weyand, S.; Shimamura, T.; Nomura, N.; Cameron, A.D.; Kobayashi, T.; Hamakubo, T.; Iwata, S.; Murata, T.
Deposited on : 2011-08-04
Resolution : 2.70 Å(reported)

This is a Full wwPDB X-ray Structure Validation Report for a publicly released PDB entry.

We welcome your comments at validation@mail.wwpdb.org

A user guide is available at

<http://wwpdb.org/validation/2016/XrayValidationReportHelp>

with specific help available everywhere you see the ⓘ symbol.

The following versions of software and data (see [references ⓘ](#)) were used in the production of this report:

MolProbity	:	4.02b-467
Mogul	:	1.7.2 (RC1), CSD as538be (2017)
Xtriage (Phenix)	:	1.9-1692
EDS	:	trunk28620
Percentile statistics	:	20161228.v01 (using entries in the PDB archive December 28th 2016)
Refmac	:	5.8.0135
CCP4	:	6.5.0
Ideal geometry (proteins)	:	Engh & Huber (2001)
Ideal geometry (DNA, RNA)	:	Parkinson et al. (1996)
Validation Pipeline (wwPDB-VP)	:	recalc28949

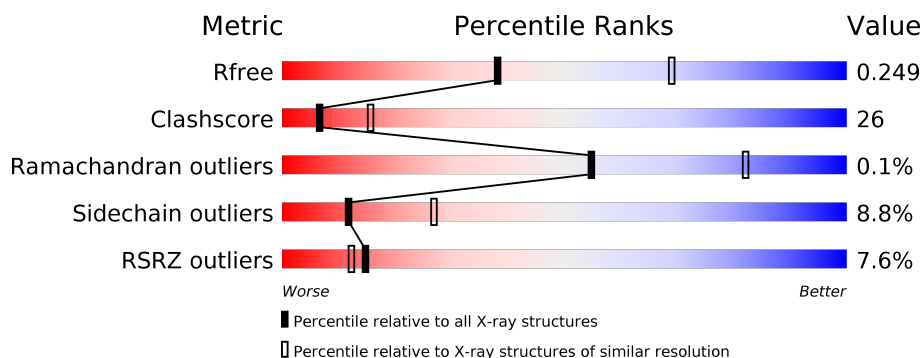
1 Overall quality at a glance

The following experimental techniques were used to determine the structure:

X-RAY DIFFRACTION

The reported resolution of this entry is 2.70 Å.

Percentile scores (ranging between 0-100) for global validation metrics of the entry are shown in the following graphic. The table shows the number of entries on which the scores are based.



Metric	Whole archive (#Entries)	Similar resolution (#Entries, resolution range(Å))
R_{free}	100719	2259 (2.70-2.70)
Clashscore	112137	2590 (2.70-2.70)
Ramachandran outliers	110173	2550 (2.70-2.70)
Sidechain outliers	110143	2550 (2.70-2.70)
RSRZ outliers	101464	2275 (2.70-2.70)

The table below summarises the geometric issues observed across the polymeric chains and their fit to the electron density. The red, orange, yellow and green segments on the lower bar indicate the fraction of residues that contain outliers for ≥ 3 , 2, 1 and 0 types of geometric quality criteria. A grey segment represents the fraction of residues that are not modelled. The numeric value for each fraction is indicated below the corresponding segment, with a dot representing fractions $\leq 5\%$. The upper red bar (where present) indicates the fraction of residues that have poor fit to the electron density. The numeric value is given above the bar.

Mol	Chain	Length	Quality of chain
1	A	326	<div> <div>15%</div> <div>41% 41% 9% 9%</div> </div>
2	B	214	<div> <div>2%</div> <div>71% 29%</div> </div>
3	C	226	<div> <div>%</div> <div>78% 19%</div> </div>

The following table lists non-polymeric compounds, carbohydrate monomers and non-standard residues in protein, DNA, RNA chains that are outliers for geometric or electron-density-fit criteria:

Mol	Type	Chain	Res	Chirality	Geometry	Clashes	Electron density
4	ZMA	A	401	-	-	-	X
5	STE	A	405	-	-	-	X
5	STE	A	407	-	-	-	X

2 Entry composition

There are 7 unique types of molecules in this entry. The entry contains 5901 atoms, of which 0 are hydrogens and 0 are deuteriums.

In the tables below, the ZeroOcc column contains the number of atoms modelled with zero occupancy, the AltConf column contains the number of residues with at least one atom in alternate conformation and the Trace column contains the number of residues modelled with at most 2 atoms.

- Molecule 1 is a protein called Adenosine receptor A2a.

Mol	Chain	Residues	Atoms					ZeroOcc	AltConf	Trace
1	A	297	Total	C	N	O	S	0	0	0
			2318	1529	388	381	20			

There are 11 discrepancies between the modelled and reference sequences:

Chain	Residue	Modelled	Actual	Comment	Reference
A	154	GLN	ASN	ENGINEERED MUTATION	UNP P29274
A	317	HIS	-	EXPRESSION TAG	UNP P29274
A	318	HIS	-	EXPRESSION TAG	UNP P29274
A	319	HIS	-	EXPRESSION TAG	UNP P29274
A	320	HIS	-	EXPRESSION TAG	UNP P29274
A	321	HIS	-	EXPRESSION TAG	UNP P29274
A	322	HIS	-	EXPRESSION TAG	UNP P29274
A	323	HIS	-	EXPRESSION TAG	UNP P29274
A	324	HIS	-	EXPRESSION TAG	UNP P29274
A	325	HIS	-	EXPRESSION TAG	UNP P29274
A	326	HIS	-	EXPRESSION TAG	UNP P29274

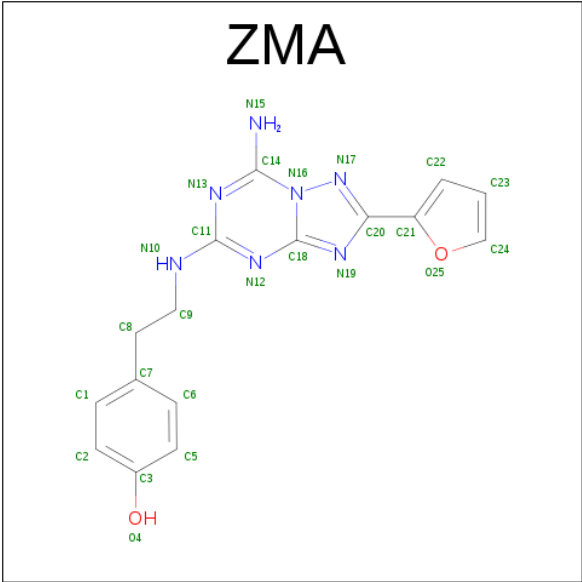
- Molecule 2 is a protein called antibody fab fragment light chain.

Mol	Chain	Residues	Atoms					ZeroOcc	AltConf	Trace
2	B	212	Total	C	N	O	S	0	0	0
			1639	1026	275	332	6			

- Molecule 3 is a protein called antibody fab fragment heavy chain.

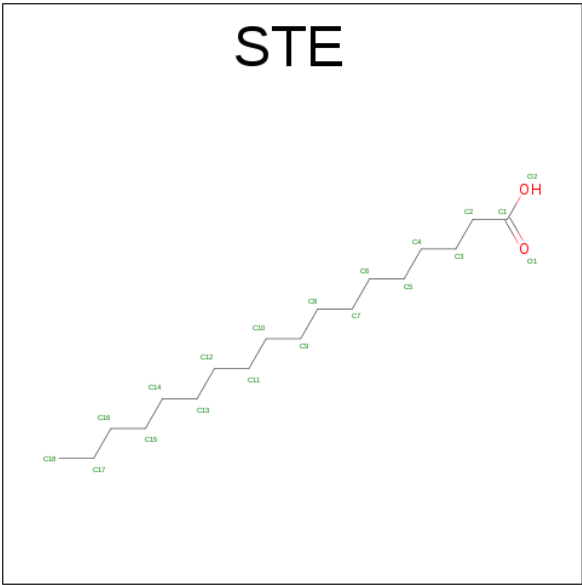
Mol	Chain	Residues	Atoms					ZeroOcc	AltConf	Trace
3	C	224	Total	C	N	O	S	0	0	0
			1694	1067	279	342	6			

- Molecule 4 is 4-{2-[(7-AMINO-2-FURAN-2-YL[1,2,4]TRIAZOLO[1,5-A][1,3,5]TRIAZIN-5-YL)AMINO]ETHYL}PHENOL (three-letter code: ZMA) (formula: C₁₆H₁₅N₇O₂).



Mol	Chain	Residues	Atoms				ZeroOcc	AltConf
4	A	1	Total	C	N	O	0	0
			25	16	7	2		

- Molecule 5 is STEARIC ACID (three-letter code: STE) (formula: C₁₈H₃₆O₂).



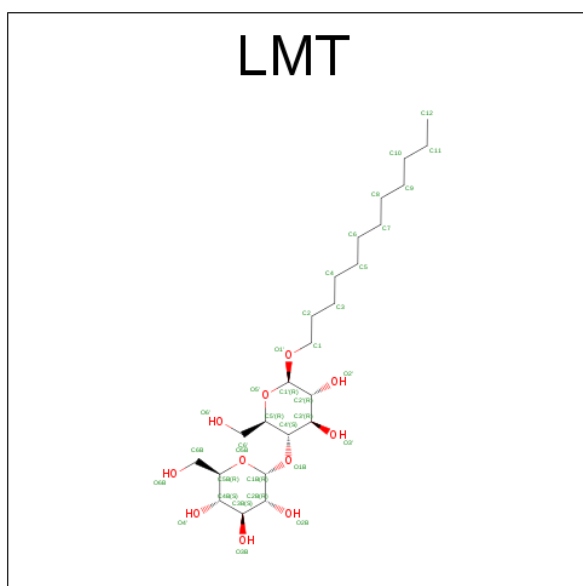
Mol	Chain	Residues	Atoms			ZeroOcc	AltConf
5	A	1	Total	C	O	0	0
			20	18	2		
5	A	1	Total	C	O	0	0
			20	18	2		
5	A	1	Total	C	O	0	0
			20	18	2		

Continued on next page...

Continued from previous page...

Mol	Chain	Residues	Atoms			ZeroOcc	AltConf
5	A	1	Total	C	O	0	0
			20	18	2		
5	A	1	Total	C	O	0	0
			20	18	2		
5	A	1	Total	C	O	0	0
			20	18	2		

- Molecule 6 is DODECYL-BETA-D-MALTOSE (three-letter code: LMT) (formula: $C_{24}H_{46}O_{11}$).



Mol	Chain	Residues	Atoms			ZeroOcc	AltConf
6	A	1	Total	C	O	0	0
			35	24	11		

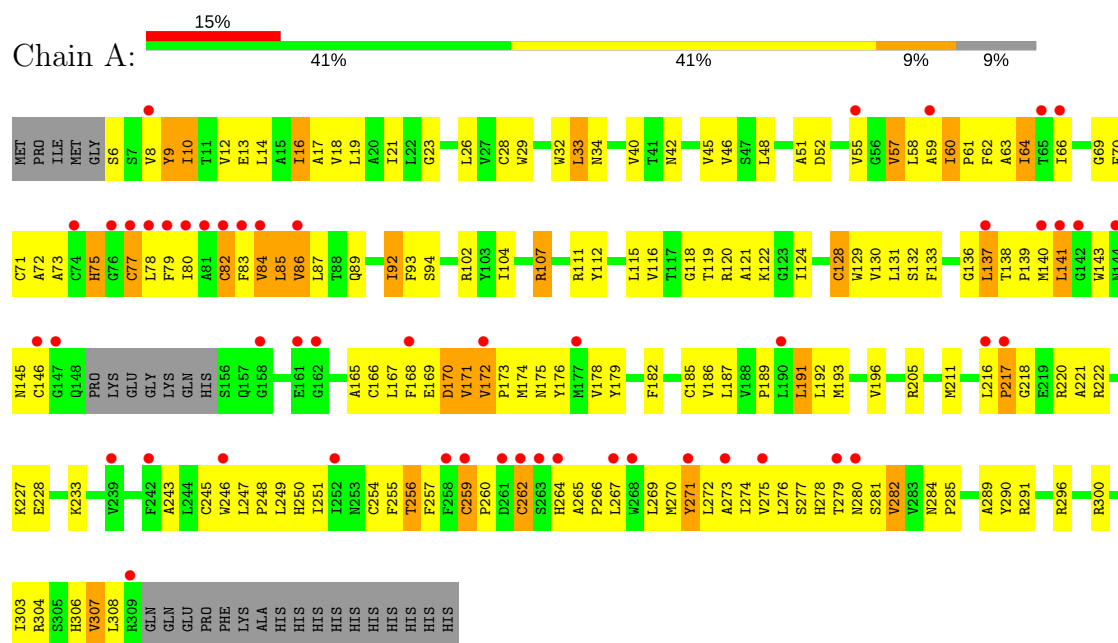
- Molecule 7 is water.

Mol	Chain	Residues	Atoms		ZeroOcc	AltConf
7	A	7	Total	O	0	0
			7	7		
7	B	24	Total	O	0	0
			24	24		
7	C	39	Total	O	0	0
			39	39		

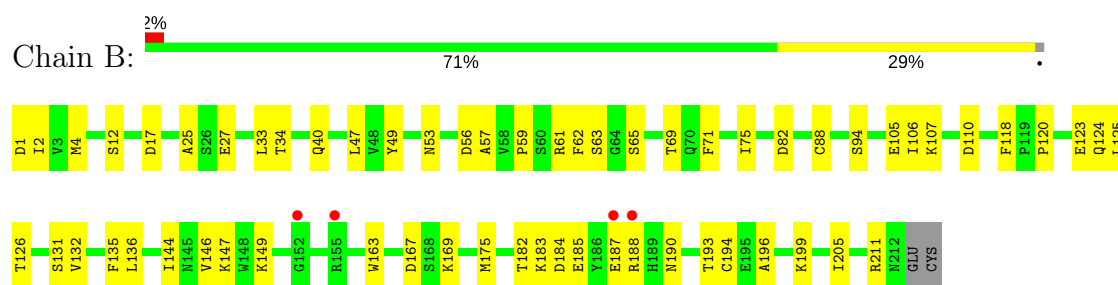
3 Residue-property plots

These plots are drawn for all protein, RNA and DNA chains in the entry. The first graphic for a chain summarises the proportions of the various outlier classes displayed in the second graphic. The second graphic shows the sequence view annotated by issues in geometry and electron density. Residues are color-coded according to the number of geometric quality criteria for which they contain at least one outlier: green = 0, yellow = 1, orange = 2 and red = 3 or more. A red dot above a residue indicates a poor fit to the electron density ($RSRZ > 2$). Stretches of 2 or more consecutive residues without any outlier are shown as a green connector. Residues present in the sample, but not in the model, are shown in grey.

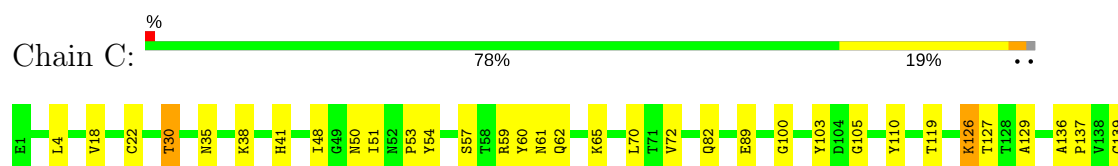
• Molecule 1: Adenosine receptor A2a

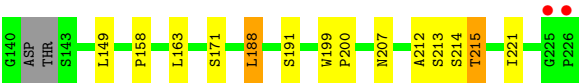


• Molecule 2: antibody fab fragment light chain



• Molecule 3: antibody fab fragment heavy chain





4 Data and refinement statistics

Property	Value	Source
Space group	C 1 2 1	Depositor
Cell constants a, b, c, α , β , γ	121.18Å 90.15Å 113.55Å 90.00° 98.10° 90.00°	Depositor
Resolution (Å)	20.00 – 2.70 63.15 – 2.44	Depositor EDS
% Data completeness (in resolution range)	92.8 (20.00-2.70) 92.3 (63.15-2.44)	Depositor EDS
R_{merge}	0.12	Depositor
R_{sym}	(Not available)	Depositor
$\langle I/\sigma(I) \rangle$ ¹	1.30 (at 2.45Å)	Xtriage
Refinement program	PHENIX (phenix.refine: 1.7_650)	Depositor
R, R_{free}	0.206 , 0.246 0.207 , 0.249	Depositor DCC
R_{free} test set	1558 reflections (5.03%)	DCC
Wilson B-factor (Å ²)	58.8	Xtriage
Anisotropy	0.334	Xtriage
Bulk solvent k_{sol} (e/Å ³), B_{sol} (Å ²)	0.29 , 78.0	EDS
L-test for twinning ²	$\langle L \rangle = 0.48$, $\langle L^2 \rangle = 0.31$	Xtriage
Estimated twinning fraction	No twinning to report.	Xtriage
F_o, F_c correlation	0.92	EDS
Total number of atoms	5901	wwPDB-VP
Average B, all atoms (Å ²)	88.0	wwPDB-VP

Xtriage's analysis on translational NCS is as follows: *The largest off-origin peak in the Patterson function is 6.23% of the height of the origin peak. No significant pseudotranslation is detected.*

¹Intensities estimated from amplitudes.

²Theoretical values of $\langle |L| \rangle$, $\langle L^2 \rangle$ for acentric reflections are 0.5, 0.333 respectively for untwinned datasets, and 0.375, 0.2 for perfectly twinned datasets.

5 Model quality [i](#)

5.1 Standard geometry [i](#)

Bond lengths and bond angles in the following residue types are not validated in this section: STE, ZMA, LMT

The Z score for a bond length (or angle) is the number of standard deviations the observed value is removed from the expected value. A bond length (or angle) with $|Z| > 5$ is considered an outlier worth inspection. RMSZ is the root-mean-square of all Z scores of the bond lengths (or angles).

Mol	Chain	Bond lengths		Bond angles	
		RMSZ	# Z >5	RMSZ	# Z >5
1	A	0.30	0/2374	0.49	0/3236
2	B	0.34	0/1678	0.54	0/2280
3	C	0.34	0/1736	0.54	0/2366
All	All	0.33	0/5788	0.52	0/7882

There are no bond length outliers.

There are no bond angle outliers.

There are no chirality outliers.

There are no planarity outliers.

5.2 Too-close contacts [i](#)

In the following table, the Non-H and H(model) columns list the number of non-hydrogen atoms and hydrogen atoms in the chain respectively. The H(added) column lists the number of hydrogen atoms added and optimized by MolProbity. The Clashes column lists the number of clashes within the asymmetric unit, whereas Symm-Clashes lists symmetry related clashes.

Mol	Chain	Non-H	H(model)	H(added)	Clashes	Symm-Clashes
1	A	2318	0	2393	224	0
2	B	1639	0	1562	42	0
3	C	1694	0	1640	35	0
4	A	25	0	15	4	0
5	A	120	0	210	22	0
6	A	35	0	46	1	0
7	A	7	0	0	0	0
7	B	24	0	0	1	0
7	C	39	0	0	1	0
All	All	5901	0	5866	305	0

The all-atom clashscore is defined as the number of clashes found per 1000 atoms (including hydrogen atoms). The all-atom clashscore for this structure is 26.

All (305) close contacts within the same asymmetric unit are listed below, sorted by their clash magnitude.

Atom-1	Atom-2	Interatomic distance (Å)	Clash overlap (Å)
1:A:245:CYS:HA	1:A:276:LEU:HD21	1.26	1.17
1:A:259:CYS:SG	1:A:262:CYS:HB2	1.96	1.06
1:A:28:CYS:HB3	5:A:405:STE:H82	1.41	1.02
1:A:69:GLY:HA2	1:A:167:LEU:HD11	1.47	0.97
1:A:143:TRP:CH2	1:A:173:PRO:HG2	2.01	0.95
1:A:62:PHE:CE2	1:A:79:PHE:HE2	1.85	0.94
1:A:259:CYS:SG	1:A:262:CYS:CB	2.55	0.94
1:A:13:GLU:HB3	1:A:60:ILE:HG13	1.48	0.93
1:A:62:PHE:HE2	1:A:79:PHE:HE2	1.16	0.91
1:A:9:TYR:HE2	1:A:64:ILE:HD11	1.34	0.91
1:A:9:TYR:CD2	1:A:10:ILE:HD13	2.06	0.90
1:A:86:VAL:HG21	1:A:133:PHE:CD1	2.08	0.89
1:A:60:ILE:HG22	1:A:61:PRO:HD3	1.51	0.88
1:A:249:LEU:HB2	1:A:273:ALA:HB1	1.56	0.88
1:A:259:CYS:HB3	1:A:262:CYS:HB3	1.54	0.87
1:A:57:VAL:HG13	1:A:58:LEU:HD13	1.57	0.86
1:A:168:PHE:CD2	1:A:172:VAL:HG11	2.12	0.85
1:A:9:TYR:CE2	1:A:64:ILE:HD11	2.11	0.85
1:A:245:CYS:CA	1:A:276:LEU:HD21	2.06	0.85
1:A:143:TRP:CZ3	1:A:173:PRO:HG2	2.13	0.83
1:A:250:HIS:O	1:A:254:CYS:HB2	1.79	0.83
1:A:168:PHE:CE2	1:A:172:VAL:HG11	2.14	0.83
1:A:71:CYS:HA	1:A:165:ALA:HA	1.62	0.82
1:A:259:CYS:HB3	1:A:262:CYS:CB	2.10	0.80
1:A:227:LYS:HZ3	2:B:53:ASN:HB3	1.46	0.80
1:A:143:TRP:CH2	1:A:173:PRO:CG	2.67	0.77
3:C:103:TYR:CZ	3:C:105:GLY:HA2	2.21	0.75
1:A:143:TRP:HH2	1:A:173:PRO:CG	1.99	0.75
1:A:259:CYS:CB	1:A:262:CYS:HB2	2.17	0.74
1:A:9:TYR:C	1:A:9:TYR:HD2	1.91	0.74
1:A:300:ARG:O	1:A:304:ARG:HG2	1.87	0.74
1:A:9:TYR:HD2	1:A:10:ILE:HD13	1.52	0.74
1:A:9:TYR:CD2	1:A:9:TYR:C	2.62	0.72
1:A:78:LEU:HD13	1:A:139:PRO:HB3	1.72	0.71
1:A:168:PHE:CZ	1:A:172:VAL:HG21	2.24	0.71
1:A:259:CYS:CB	1:A:262:CYS:CB	2.68	0.71
1:A:62:PHE:HE2	1:A:79:PHE:CE2	2.04	0.70

Continued on next page...

Continued from previous page...

Atom-1	Atom-2	Interatomic distance (Å)	Clash overlap (Å)
1:A:13:GLU:OE2	1:A:60:ILE:HD11	1.90	0.70
1:A:138:THR:O	1:A:141:LEU:HG	1.92	0.70
1:A:216:LEU:HD11	1:A:222:ARG:HD3	1.72	0.70
2:B:110:ASP:OD2	2:B:199:LYS:HD3	1.91	0.69
2:B:135:PHE:CE2	3:C:191:SER:HB3	2.26	0.69
1:A:104:ILE:HG22	1:A:112:TYR:HD1	1.56	0.68
1:A:40:VAL:HG13	1:A:121:ALA:HB2	1.75	0.68
1:A:107:ARG:NE	1:A:107:ARG:HA	2.08	0.68
3:C:126:LYS:HE3	3:C:126:LYS:HA	1.74	0.68
1:A:276:LEU:HD23	1:A:276:LEU:C	2.14	0.68
1:A:86:VAL:HG21	1:A:133:PHE:HD1	1.55	0.68
1:A:174:MET:HG2	1:A:257:PHE:HB2	1.76	0.67
3:C:30:THR:HA	3:C:53:PRO:HB2	1.76	0.67
1:A:216:LEU:HB3	1:A:217:PRO:HA	1.77	0.67
3:C:51:ILE:HD13	3:C:72:VAL:HG23	1.78	0.66
1:A:62:PHE:CE2	1:A:79:PHE:CE2	2.78	0.66
2:B:182:THR:HG22	2:B:185:GLU:HB2	1.77	0.66
2:B:94:SER:O	3:C:59:ARG:HD2	1.96	0.66
1:A:17:ALA:O	1:A:21:ILE:HG12	1.96	0.65
1:A:58:LEU:O	1:A:61:PRO:HD2	1.97	0.65
1:A:86:VAL:HG21	1:A:133:PHE:CE1	2.30	0.65
1:A:129:TRP:CD1	5:A:406:STE:H91	2.32	0.64
3:C:60:TYR:HE1	3:C:70:LEU:HG	1.62	0.64
1:A:93:PHE:HB3	1:A:128:CYS:SG	2.38	0.64
3:C:199:TRP:CG	3:C:200:PRO:HA	2.33	0.64
1:A:48:LEU:HD13	1:A:94:SER:HB2	1.80	0.63
1:A:10:ILE:HD11	1:A:64:ILE:CD1	2.28	0.63
1:A:73:ALA:O	1:A:77:CYS:HB2	1.99	0.63
1:A:245:CYS:O	1:A:248:PRO:HD2	1.98	0.63
1:A:111:ARG:O	1:A:115:LEU:HB2	1.99	0.62
1:A:12:VAL:HG12	1:A:13:GLU:N	2.13	0.62
1:A:303:ILE:O	1:A:307:VAL:HB	2.00	0.62
2:B:49:TYR:O	2:B:53:ASN:HB2	2.00	0.62
1:A:70:PHE:CE2	1:A:72:ALA:HB2	2.36	0.61
1:A:10:ILE:HD12	1:A:64:ILE:HG13	1.83	0.61
1:A:246:TRP:CE2	1:A:277:SER:HB2	2.36	0.61
1:A:247:LEU:HD11	5:A:407:STE:H162	1.82	0.61
2:B:27:GLU:O	2:B:69:THR:HG22	1.99	0.61
1:A:290:TYR:OH	5:A:403:STE:H21	2.00	0.61
1:A:138:THR:N	1:A:139:PRO:HD2	2.15	0.61
1:A:32:TRP:NE1	5:A:405:STE:H182	2.16	0.61

Continued on next page...

Continued from previous page...

Atom-1	Atom-2	Interatomic distance (Å)	Clash overlap (Å)
1:A:205:ARG:HH22	1:A:233:LYS:HE2	1.65	0.60
1:A:143:TRP:HH2	1:A:173:PRO:CB	2.14	0.60
2:B:33:LEU:HD11	2:B:88:CYS:HB2	1.85	0.59
1:A:182:PHE:HB2	1:A:250:HIS:HD2	1.68	0.59
1:A:264:HIS:CG	1:A:265:ALA:N	2.70	0.59
1:A:10:ILE:CD1	1:A:64:ILE:HD11	2.33	0.59
1:A:57:VAL:HG13	1:A:58:LEU:CD1	2.32	0.59
1:A:107:ARG:HA	1:A:107:ARG:HE	1.67	0.58
1:A:170:ASP:N	1:A:170:ASP:OD1	2.32	0.58
1:A:249:LEU:CB	1:A:273:ALA:HB1	2.31	0.58
2:B:146:VAL:HG21	2:B:175:MET:HE1	1.86	0.58
2:B:94:SER:HB2	3:C:59:ARG:HD3	1.86	0.57
1:A:59:ALA:HB1	1:A:84:VAL:HG12	1.85	0.57
1:A:75:HIS:N	1:A:75:HIS:ND1	2.52	0.57
1:A:70:PHE:CG	1:A:71:CYS:N	2.72	0.57
1:A:289:ALA:O	1:A:296:ARG:HD3	2.05	0.57
1:A:119:THR:O	1:A:122:LYS:HB2	2.05	0.57
1:A:86:VAL:HG23	1:A:132:SER:HB3	1.86	0.56
2:B:182:THR:HG23	2:B:185:GLU:H	1.69	0.56
1:A:32:TRP:HE1	5:A:405:STE:H182	1.71	0.56
3:C:100:GLY:HA3	3:C:110:TYR:CE1	2.41	0.55
1:A:10:ILE:CD1	1:A:64:ILE:CD1	2.84	0.55
1:A:58:LEU:HD23	1:A:83:PHE:CE2	2.42	0.55
1:A:9:TYR:CE2	1:A:13:GLU:HG3	2.42	0.55
2:B:33:LEU:HD22	2:B:71:PHE:CG	2.41	0.55
1:A:307:VAL:HG12	1:A:308:LEU:N	2.22	0.54
1:A:57:VAL:CG1	1:A:58:LEU:HD13	2.34	0.54
1:A:167:LEU:O	1:A:171:VAL:HG13	2.07	0.54
1:A:266:PRO:O	1:A:270:MET:HB3	2.08	0.54
1:A:250:HIS:O	1:A:254:CYS:CB	2.53	0.54
1:A:246:TRP:CD2	1:A:277:SER:HB2	2.43	0.54
1:A:264:HIS:CG	1:A:265:ALA:H	2.25	0.53
1:A:89:GLN:NE2	1:A:185:CYS:HB3	2.23	0.53
5:A:402:STE:H121	6:A:408:LMT:H91	1.90	0.53
1:A:42:ASN:HA	1:A:45:VAL:HB	1.91	0.53
1:A:247:LEU:HB3	1:A:248:PRO:HD3	1.91	0.53
1:A:9:TYR:CD2	1:A:10:ILE:CD1	2.87	0.53
1:A:259:CYS:HG	1:A:262:CYS:HG	1.56	0.53
1:A:174:MET:HE1	1:A:256:THR:HG22	1.91	0.52
1:A:175:ASN:HA	1:A:257:PHE:CZ	2.44	0.52
1:A:205:ARG:HH22	1:A:233:LYS:CE	2.21	0.52

Continued on next page...

Continued from previous page...

Atom-1	Atom-2	Interatomic distance (Å)	Clash overlap (Å)
1:A:245:CYS:CA	1:A:276:LEU:CD2	2.85	0.52
1:A:247:LEU:O	1:A:251:ILE:HG13	2.09	0.52
1:A:245:CYS:O	1:A:276:LEU:HD22	2.09	0.52
1:A:274:ILE:HG23	1:A:275:VAL:N	2.25	0.52
1:A:29:TRP:O	1:A:33:LEU:HB2	2.10	0.52
1:A:59:ALA:CB	1:A:84:VAL:HG12	2.39	0.52
1:A:168:PHE:CE1	1:A:172:VAL:HG21	2.44	0.52
1:A:245:CYS:HA	1:A:276:LEU:CD2	2.18	0.52
1:A:267:LEU:O	1:A:271:TYR:HB2	2.10	0.51
1:A:172:VAL:CG1	1:A:172:VAL:O	2.58	0.51
1:A:166:CYS:HA	1:A:171:VAL:HG11	1.92	0.51
1:A:175:ASN:HA	1:A:257:PHE:CE1	2.45	0.51
1:A:10:ILE:HD12	1:A:64:ILE:CG1	2.41	0.51
2:B:184:ASP:O	2:B:188:ARG:HG3	2.11	0.51
1:A:137:LEU:HD13	1:A:140:MET:HB2	1.92	0.51
3:C:199:TRP:CE2	3:C:200:PRO:HB3	2.46	0.50
1:A:120:ARG:O	1:A:124:ILE:HG13	2.11	0.50
1:A:168:PHE:O	1:A:172:VAL:HG12	2.12	0.50
1:A:13:GLU:HB3	1:A:60:ILE:CG1	2.32	0.50
1:A:79:PHE:CD2	1:A:80:ILE:HD12	2.47	0.50
1:A:168:PHE:CE2	4:A:401:ZMA:N16	2.79	0.50
1:A:192:LEU:HA	5:A:402:STE:H101	1.94	0.50
1:A:189:PRO:O	1:A:193:MET:HB2	2.12	0.50
1:A:216:LEU:HA	1:A:218:GLY:H	1.76	0.50
3:C:199:TRP:CD1	3:C:200:PRO:HA	2.47	0.50
1:A:33:LEU:HD22	1:A:33:LEU:O	2.12	0.49
1:A:104:ILE:HG22	1:A:112:TYR:CD1	2.43	0.49
1:A:257:PHE:O	1:A:260:PRO:HD3	2.11	0.49
1:A:130:VAL:HG12	1:A:131:LEU:HD12	1.93	0.49
2:B:205:ILE:HD12	2:B:205:ILE:H	1.77	0.49
1:A:145:ASN:HB2	1:A:173:PRO:HG3	1.93	0.49
1:A:9:TYR:CE1	1:A:271:TYR:CE2	3.00	0.49
3:C:126:LYS:HE3	3:C:127:THR:H	1.77	0.49
1:A:138:THR:OG1	1:A:139:PRO:HD3	2.13	0.49
1:A:193:MET:HA	1:A:196:VAL:HG12	1.93	0.49
3:C:158:PRO:HD2	3:C:212:ALA:CB	2.43	0.49
1:A:220:ARG:NH1	1:A:228:GLU:OE2	2.45	0.48
1:A:52:ASP:HB3	1:A:281:SER:HB3	1.94	0.48
3:C:137:PRO:HD3	3:C:149:LEU:HD23	1.96	0.48
1:A:169:GLU:OE1	1:A:264:HIS:CE1	2.66	0.48
2:B:61:ARG:HH21	2:B:82:ASP:CG	2.16	0.48

Continued on next page...

Continued from previous page...

Atom-1	Atom-2	Interatomic distance (Å)	Clash overlap (Å)
3:C:126:LYS:CE	3:C:127:THR:H	2.27	0.48
1:A:129:TRP:NE1	5:A:406:STE:H91	2.28	0.48
1:A:221:ALA:HA	2:B:56:ASP:OD2	2.13	0.48
1:A:66:ILE:HD11	1:A:80:ILE:HG22	1.94	0.48
1:A:167:LEU:O	1:A:171:VAL:HG22	2.13	0.48
1:A:168:PHE:CD2	4:A:401:ZMA:C14	2.97	0.48
1:A:79:PHE:HD2	1:A:80:ILE:HD12	1.79	0.48
2:B:144:ILE:HG22	2:B:163:TRP:CZ3	2.49	0.48
1:A:79:PHE:C	1:A:79:PHE:CD2	2.87	0.48
1:A:82:CYS:HB3	1:A:85:LEU:HG	1.96	0.48
1:A:227:LYS:HZ3	2:B:53:ASN:CB	2.20	0.48
3:C:62:GLN:HA	3:C:65:LYS:HE3	1.95	0.48
1:A:143:TRP:CZ2	1:A:176:TYR:CE2	3.03	0.47
1:A:182:PHE:CD2	1:A:250:HIS:HB3	2.50	0.47
3:C:188:LEU:HD23	3:C:188:LEU:C	2.35	0.47
1:A:60:ILE:HD12	1:A:63:ALA:HB3	1.96	0.47
1:A:182:PHE:O	1:A:187:LEU:HB2	2.14	0.47
2:B:182:THR:CG2	2:B:185:GLU:HB2	2.43	0.47
1:A:175:ASN:OD1	1:A:176:TYR:HD2	1.98	0.47
5:A:407:STE:H92	5:A:407:STE:H61	1.46	0.47
1:A:55:VAL:HA	1:A:59:ALA:HB3	1.97	0.47
1:A:102:ARG:HA	1:A:102:ARG:NE	2.29	0.47
1:A:40:VAL:HG21	1:A:116:VAL:HG12	1.94	0.47
1:A:191:LEU:HA	1:A:191:LEU:HD12	1.62	0.47
2:B:193:THR:HG23	7:B:228:HOH:O	2.13	0.47
3:C:163:LEU:C	3:C:163:LEU:HD23	2.35	0.47
2:B:135:PHE:CD2	3:C:191:SER:HB3	2.49	0.47
1:A:172:VAL:HA	1:A:173:PRO:HD3	1.70	0.47
1:A:16:ILE:HG22	1:A:17:ALA:N	2.29	0.47
1:A:249:LEU:HD21	4:A:401:ZMA:O25	2.15	0.47
1:A:182:PHE:HB2	1:A:250:HIS:CD2	2.50	0.47
2:B:163:TRP:CD1	2:B:163:TRP:N	2.82	0.47
1:A:168:PHE:O	1:A:172:VAL:N	2.41	0.46
1:A:17:ALA:HB2	1:A:60:ILE:HG21	1.96	0.46
1:A:119:THR:HG22	1:A:122:LYS:NZ	2.30	0.46
1:A:307:VAL:CG1	1:A:308:LEU:N	2.78	0.46
1:A:246:TRP:CZ2	1:A:277:SER:HB2	2.51	0.46
2:B:12:SER:HA	2:B:105:GLU:O	2.15	0.46
1:A:290:TYR:HD2	1:A:291:ARG:HG2	1.81	0.46
2:B:136:LEU:HD21	2:B:196:ALA:HB2	1.98	0.46
2:B:4:MET:HE2	2:B:25:ALA:HA	1.97	0.46

Continued on next page...

Continued from previous page...

Atom-1	Atom-2	Interatomic distance (Å)	Clash overlap (Å)
3:C:4:LEU:HB3	3:C:22:CYS:SG	2.55	0.46
1:A:131:LEU:N	1:A:131:LEU:HD12	2.30	0.46
1:A:205:ARG:HH22	1:A:233:LYS:NZ	2.14	0.46
1:A:211:MET:SD	1:A:222:ARG:HG3	2.55	0.46
3:C:129:ALA:HB1	3:C:215:THR:HG21	1.97	0.46
1:A:172:VAL:O	1:A:172:VAL:HG13	2.15	0.46
1:A:187:LEU:O	1:A:191:LEU:HB2	2.15	0.46
1:A:259:CYS:CB	1:A:262:CYS:HB3	2.33	0.46
3:C:35:ASN:OD1	3:C:50:ASN:HB3	2.16	0.46
1:A:9:TYR:HE2	1:A:13:GLU:HG3	1.81	0.46
1:A:251:ILE:O	1:A:254:CYS:HB3	2.16	0.46
1:A:10:ILE:CD1	1:A:64:ILE:HG13	2.45	0.46
1:A:182:PHE:CE2	1:A:250:HIS:HB3	2.51	0.46
1:A:48:LEU:HD13	1:A:94:SER:CB	2.44	0.46
1:A:9:TYR:O	1:A:12:VAL:HB	2.16	0.45
2:B:125:LEU:O	2:B:183:LYS:HD2	2.16	0.45
3:C:18:VAL:O	3:C:82:GLN:HA	2.15	0.45
1:A:143:TRP:CZ3	1:A:173:PRO:CG	2.93	0.45
1:A:86:VAL:HB	1:A:136:GLY:HA3	1.97	0.45
5:A:402:STE:H141	5:A:402:STE:H172	1.69	0.45
1:A:118:GLY:O	1:A:121:ALA:HB3	2.17	0.45
3:C:213:SER:OG	3:C:215:THR:HG23	2.17	0.45
1:A:275:VAL:HG12	1:A:276:LEU:N	2.32	0.45
5:A:403:STE:H152	5:A:403:STE:H122	1.55	0.45
2:B:120:PRO:HD3	2:B:132:VAL:HG22	1.99	0.45
1:A:243:ALA:O	1:A:247:LEU:HB2	2.17	0.45
3:C:119:THR:HG22	7:C:259:HOH:O	2.16	0.45
1:A:32:TRP:CE2	5:A:405:STE:H161	2.52	0.45
1:A:264:HIS:CD2	1:A:265:ALA:O	2.70	0.44
1:A:19:LEU:HB3	1:A:282:VAL:HG22	1.99	0.44
2:B:205:ILE:HD12	2:B:205:ILE:N	2.33	0.44
1:A:10:ILE:HD11	1:A:64:ILE:HD11	1.94	0.44
1:A:137:LEU:HD22	1:A:140:MET:HG3	1.99	0.44
1:A:138:THR:N	1:A:139:PRO:CD	2.79	0.44
1:A:284:ASN:HB2	1:A:285:PRO:HD3	1.99	0.44
1:A:60:ILE:HG22	1:A:61:PRO:CD	2.36	0.44
3:C:149:LEU:HD22	3:C:221:ILE:HG21	1.99	0.44
1:A:62:PHE:O	1:A:66:ILE:HG12	2.18	0.44
1:A:89:GLN:HE22	1:A:185:CYS:HB3	1.83	0.44
1:A:178:VAL:O	1:A:178:VAL:HG12	2.18	0.44
1:A:211:MET:SD	1:A:222:ARG:CG	3.06	0.44

Continued on next page...

Continued from previous page...

Atom-1	Atom-2	Interatomic distance (Å)	Clash overlap (Å)
1:A:276:LEU:CD2	1:A:276:LEU:C	2.86	0.43
2:B:144:ILE:HG22	2:B:163:TRP:HZ3	1.83	0.43
1:A:92:ILE:HD13	1:A:186:VAL:HG22	2.00	0.43
1:A:274:ILE:HG13	1:A:278:HIS:CE1	2.53	0.43
3:C:163:LEU:HA	3:C:207:ASN:O	2.17	0.43
1:A:249:LEU:C	1:A:249:LEU:HD23	2.38	0.43
1:A:55:VAL:HG23	1:A:87:LEU:CD1	2.47	0.43
1:A:175:ASN:O	1:A:179:TYR:HB2	2.17	0.43
1:A:186:VAL:HG12	1:A:187:LEU:N	2.34	0.43
5:A:405:STE:H92	5:A:405:STE:C15	2.49	0.43
1:A:51:ALA:HB2	1:A:129:TRP:CH2	2.54	0.43
1:A:21:ILE:HD11	1:A:57:VAL:N	2.33	0.43
2:B:62:PHE:CE1	2:B:75:ILE:HG12	2.53	0.43
1:A:137:LEU:O	1:A:141:LEU:HD21	2.19	0.43
1:A:216:LEU:HD11	1:A:222:ARG:CD	2.44	0.43
5:A:405:STE:H92	5:A:405:STE:H152	2.00	0.43
2:B:56:ASP:O	2:B:57:ALA:HB3	2.18	0.43
1:A:10:ILE:N	1:A:10:ILE:HD13	2.31	0.43
1:A:62:PHE:HB3	1:A:80:ILE:HG23	2.00	0.43
2:B:124:GLN:HE22	2:B:131:SER:CB	2.32	0.43
1:A:143:TRP:HZ2	1:A:176:TYR:CE2	2.37	0.42
1:A:8:VAL:HG13	1:A:9:TYR:N	2.34	0.42
1:A:23:GLY:O	1:A:26:LEU:HB3	2.20	0.42
1:A:166:CYS:O	1:A:167:LEU:HD12	2.18	0.42
5:A:405:STE:H92	5:A:405:STE:H121	1.81	0.42
2:B:33:LEU:HG	2:B:34:THR:N	2.35	0.42
1:A:6:SER:HB3	1:A:9:TYR:HB3	2.01	0.42
3:C:61:ASN:OD1	3:C:62:GLN:N	2.52	0.42
1:A:34:ASN:C	1:A:34:ASN:OD1	2.56	0.42
3:C:60:TYR:CE1	3:C:70:LEU:HG	2.50	0.42
1:A:245:CYS:SG	1:A:280:ASN:HB2	2.60	0.42
1:A:28:CYS:CB	5:A:405:STE:H82	2.31	0.42
2:B:2:ILE:HG22	2:B:4:MET:CE	2.50	0.42
3:C:126:LYS:HE3	3:C:126:LYS:CA	2.46	0.42
1:A:272:LEU:O	1:A:275:VAL:N	2.53	0.42
5:A:403:STE:H181	5:A:407:STE:H183	2.01	0.42
1:A:129:TRP:CE2	5:A:406:STE:H91	2.55	0.41
2:B:190:ASN:O	2:B:211:ARG:HG3	2.19	0.41
3:C:136:ALA:HB1	3:C:137:PRO:HD2	2.02	0.41
1:A:168:PHE:CE2	4:A:401:ZMA:N17	2.88	0.41
1:A:48:LEU:CD1	1:A:94:SER:HB2	2.47	0.41

Continued on next page...

Continued from previous page...

Atom-1	Atom-2	Interatomic distance (Å)	Clash overlap (Å)
3:C:129:ALA:CB	3:C:215:THR:HG21	2.50	0.41
3:C:65:LYS:HE3	3:C:65:LYS:HB2	1.85	0.41
2:B:123:GLU:O	2:B:126:THR:HB	2.20	0.41
3:C:38:LYS:HB2	3:C:48:ILE:HD11	2.03	0.41
1:A:29:TRP:HH2	1:A:306:HIS:CD2	2.39	0.41
5:A:402:STE:H132	5:A:402:STE:H91	2.02	0.41
1:A:80:ILE:N	1:A:80:ILE:HD12	2.36	0.41
1:A:119:THR:HA	1:A:122:LYS:HD2	2.03	0.41
5:A:403:STE:H31	5:A:404:STE:O2	2.20	0.41
1:A:60:ILE:HD12	1:A:60:ILE:HA	1.57	0.41
2:B:118:PHE:N	2:B:118:PHE:CD2	2.89	0.41
1:A:9:TYR:CD2	1:A:9:TYR:O	2.74	0.41
2:B:147:LYS:HD3	2:B:149:LYS:NZ	2.36	0.41
2:B:47:LEU:HD12	2:B:47:LEU:HA	1.87	0.41
2:B:59:PRO:HG2	2:B:62:PHE:CD2	2.56	0.41
1:A:115:LEU:HA	1:A:115:LEU:HD12	1.94	0.40
1:A:9:TYR:CE1	1:A:271:TYR:CD2	3.09	0.40
2:B:167:ASP:OD2	2:B:169:LYS:HB3	2.21	0.40
5:A:407:STE:H112	5:A:407:STE:H81	1.69	0.40
2:B:59:PRO:HG2	2:B:62:PHE:HD2	1.86	0.40
1:A:9:TYR:CE2	1:A:13:GLU:CG	3.04	0.40
1:A:143:TRP:NE1	1:A:176:TYR:CZ	2.90	0.40

There are no symmetry-related clashes.

5.3 Torsion angles [i](#)

5.3.1 Protein backbone [i](#)

In the following table, the Percentiles column shows the percent Ramachandran outliers of the chain as a percentile score with respect to all X-ray entries followed by that with respect to entries of similar resolution.

The Analysed column shows the number of residues for which the backbone conformation was analysed, and the total number of residues.

Mol	Chain	Analysed	Favoured	Allowed	Outliers	Percentiles
1	A	293/326 (90%)	259 (88%)	33 (11%)	1 (0%)	44 73
2	B	210/214 (98%)	204 (97%)	6 (3%)	0	100 100
3	C	220/226 (97%)	215 (98%)	5 (2%)	0	100 100

Continued on next page...

Continued from previous page...

Mol	Chain	Analysed	Favoured	Allowed	Outliers	Percentiles
All	All	723/766 (94%)	678 (94%)	44 (6%)	1 (0%)	55 82

All (1) Ramachandran outliers are listed below:

Mol	Chain	Res	Type
1	A	217	PRO

5.3.2 Protein sidechains ⓘ

In the following table, the Percentiles column shows the percent sidechain outliers of the chain as a percentile score with respect to all X-ray entries followed by that with respect to entries of similar resolution.

The Analysed column shows the number of residues for which the sidechain conformation was analysed, and the total number of residues.

Mol	Chain	Analysed	Rotameric	Outliers	Percentiles
1	A	250/276 (91%)	215 (86%)	35 (14%)	4 10
2	B	184/186 (99%)	175 (95%)	9 (5%)	29 58
3	C	193/195 (99%)	182 (94%)	11 (6%)	24 51
All	All	627/657 (95%)	572 (91%)	55 (9%)	12 27

All (55) residues with a non-rotameric sidechain are listed below:

Mol	Chain	Res	Type
1	A	9	TYR
1	A	10	ILE
1	A	14	LEU
1	A	16	ILE
1	A	18	VAL
1	A	33	LEU
1	A	46	VAL
1	A	57	VAL
1	A	60	ILE
1	A	64	ILE
1	A	75	HIS
1	A	77	CYS
1	A	82	CYS
1	A	84	VAL
1	A	85	LEU

Continued on next page...

Continued from previous page...

Mol	Chain	Res	Type
1	A	86	VAL
1	A	92	ILE
1	A	107	ARG
1	A	128	CYS
1	A	137	LEU
1	A	141	LEU
1	A	146	CYS
1	A	170	ASP
1	A	171	VAL
1	A	172	VAL
1	A	191	LEU
1	A	255	PHE
1	A	256	THR
1	A	259	CYS
1	A	262	CYS
1	A	269	LEU
1	A	271	TYR
1	A	279	THR
1	A	282	VAL
1	A	307	VAL
2	B	1	ASP
2	B	17	ASP
2	B	40	GLN
2	B	63	SER
2	B	65	SER
2	B	106	ILE
2	B	107	LYS
2	B	187	GLU
2	B	194	CYS
3	C	30	THR
3	C	41	HIS
3	C	54	TYR
3	C	57	SER
3	C	89	GLU
3	C	126	LYS
3	C	139	CYS
3	C	171	SER
3	C	188	LEU
3	C	214	SER
3	C	215	THR

Some sidechains can be flipped to improve hydrogen bonding and reduce clashes. All (4) such sidechains are listed below:

Mol	Chain	Res	Type
1	A	144	ASN
1	A	145	ASN
1	A	250	HIS
1	A	264	HIS

5.3.3 RNA ⓘ

There are no RNA molecules in this entry.

5.4 Non-standard residues in protein, DNA, RNA chains ⓘ

There are no non-standard protein/DNA/RNA residues in this entry.

5.5 Carbohydrates ⓘ

There are no carbohydrates in this entry.

5.6 Ligand geometry ⓘ

8 ligands are modelled in this entry.

In the following table, the Counts columns list the number of bonds (or angles) for which Mogul statistics could be retrieved, the number of bonds (or angles) that are observed in the model and the number of bonds (or angles) that are defined in the chemical component dictionary. The Link column lists molecule types, if any, to which the group is linked. The Z score for a bond length (or angle) is the number of standard deviations the observed value is removed from the expected value. A bond length (or angle) with $|Z| > 2$ is considered an outlier worth inspection. RMSZ is the root-mean-square of all Z scores of the bond lengths (or angles).

Mol	Type	Chain	Res	Link	Bond lengths			Bond angles		
					Counts	RMSZ	$\# Z > 2$	Counts	RMSZ	$\# Z > 2$
4	ZMA	A	401	-	21,28,28	1.98	3 (14%)	22,39,39	2.90	6 (27%)
5	STE	A	402	-	16,19,19	0.39	0	15,19,19	0.55	0
5	STE	A	403	-	16,19,19	0.36	0	15,19,19	0.61	0
5	STE	A	404	-	16,19,19	0.38	0	15,19,19	0.59	0
5	STE	A	405	-	16,19,19	0.35	0	15,19,19	0.61	0
5	STE	A	406	-	16,19,19	0.32	0	15,19,19	0.71	0
5	STE	A	407	-	16,19,19	0.37	0	15,19,19	0.55	0
6	LMT	A	408	-	36,36,36	1.46	6 (16%)	47,47,47	1.51	7 (14%)

In the following table, the Chirals column lists the number of chiral outliers, the number of chiral

centers analysed, the number of these observed in the model and the number defined in the chemical component dictionary. Similar counts are reported in the Torsion and Rings columns. '-' means no outliers of that kind were identified.

Mol	Type	Chain	Res	Link	Chirals	Torsions	Rings
4	ZMA	A	401	-	-	0/6/10/10	0/3/4/4
5	STE	A	402	-	-	0/15/17/17	0/0/0/0
5	STE	A	403	-	-	0/15/17/17	0/0/0/0
5	STE	A	404	-	-	0/15/17/17	0/0/0/0
5	STE	A	405	-	-	0/15/17/17	0/0/0/0
5	STE	A	406	-	-	0/15/17/17	0/0/0/0
5	STE	A	407	-	-	0/15/17/17	0/0/0/0
6	LMT	A	408	-	-	0/21/61/61	0/2/2/2

All (9) bond length outliers are listed below:

Mol	Chain	Res	Type	Atoms	Z	Observed(Å)	Ideal(Å)
4	A	401	ZMA	C21-C20	-5.51	1.38	1.49
6	A	408	LMT	C3'-C2'	-4.11	1.41	1.52
6	A	408	LMT	C3B-C2B	-4.04	1.42	1.52
6	A	408	LMT	C3'-C4'	-2.46	1.45	1.52
6	A	408	LMT	O5'-C5'	-2.04	1.39	1.44
6	A	408	LMT	O5'-C1'	2.78	1.48	1.41
6	A	408	LMT	O5B-C1B	2.98	1.49	1.41
4	A	401	ZMA	C14-N15	4.25	1.43	1.34
4	A	401	ZMA	C11-N10	4.89	1.42	1.34

All (13) bond angle outliers are listed below:

Mol	Chain	Res	Type	Atoms	Z	Observed(°)	Ideal(°)
4	A	401	ZMA	N17-C20-N19	-10.36	107.72	114.58
4	A	401	ZMA	N12-C11-N13	-3.81	120.46	126.23
6	A	408	LMT	C1B-O1B-C4'	-3.09	110.45	118.00
4	A	401	ZMA	C9-N10-C11	-2.90	118.40	123.68
6	A	408	LMT	O3'-C3'-C2'	-2.43	105.07	110.36
6	A	408	LMT	O2'-C2'-C3'	-2.23	105.50	110.36
4	A	401	ZMA	C21-C20-N19	2.09	126.26	123.64
6	A	408	LMT	C1'-C2'-C3'	2.78	115.14	109.98
6	A	408	LMT	O1'-C1-C2	2.83	119.76	109.68
6	A	408	LMT	O5'-C1'-C2'	3.24	116.54	110.30
6	A	408	LMT	C1-O1'-C1'	3.26	119.46	113.87
4	A	401	ZMA	N15-C14-N16	3.42	120.33	117.95
4	A	401	ZMA	C8-C9-N10	4.26	117.47	111.27

There are no chirality outliers.

There are no torsion outliers.

There are no ring outliers.

8 monomers are involved in 26 short contacts:

Mol	Chain	Res	Type	Clashes	Symm-Clashes
4	A	401	ZMA	4	0
5	A	402	STE	4	0
5	A	403	STE	4	0
5	A	404	STE	1	0
5	A	405	STE	8	0
5	A	406	STE	3	0
5	A	407	STE	4	0
6	A	408	LMT	1	0

5.7 Other polymers

There are no such residues in this entry.

5.8 Polymer linkage issues

There are no chain breaks in this entry.

6 Fit of model and data ⓘ

6.1 Protein, DNA and RNA chains ⓘ

In the following table, the column labelled ‘#RSRZ > 2’ contains the number (and percentage) of RSRZ outliers, followed by percent RSRZ outliers for the chain as percentile scores relative to all X-ray entries and entries of similar resolution. The OWAB column contains the minimum, median, 95th percentile and maximum values of the occupancy-weighted average B-factor per residue. The column labelled ‘Q < 0.9’ lists the number of (and percentage) of residues with an average occupancy less than 0.9.

Mol	Chain	Analysed	<RSRZ>	#RSRZ>2	OWAB(Å ²)	Q<0.9
1	A	297/326 (91%)	0.73	50 (16%) 2 1	59, 112, 181, 205	0
2	B	212/214 (99%)	0.08	4 (1%) 67 68	41, 61, 99, 145	0
3	C	224/226 (99%)	0.13	2 (0%) 84 85	39, 60, 101, 150	0
All	All	733/766 (95%)	0.36	56 (7%) 15 12	39, 76, 164, 205	0

All (56) RSRZ outliers are listed below:

Mol	Chain	Res	Type	RSRZ
1	A	81	ALA	7.2
1	A	142	GLY	7.2
1	A	78	LEU	7.0
1	A	268	TRP	6.7
1	A	261	ASP	6.1
1	A	84	VAL	4.9
1	A	246	TRP	4.8
1	A	82	CYS	4.4
1	A	271	TYR	4.3
1	A	77	CYS	4.3
1	A	79	PHE	4.2
1	A	259	CYS	4.0
1	A	267	LEU	3.9
1	A	80	ILE	3.5
1	A	140	MET	3.5
1	A	262	CYS	3.4
1	A	242	PHE	3.4
2	B	187	GLU	3.4
1	A	275	VAL	3.3
1	A	162	GLY	3.3
1	A	168	PHE	3.2
1	A	74	CYS	3.2
1	A	263	SER	3.1

Continued on next page...

Continued from previous page...

Mol	Chain	Res	Type	RSRZ
1	A	144	ASN	3.1
1	A	273	ALA	3.0
1	A	83	PHE	3.0
1	A	66	ILE	2.9
1	A	141	LEU	2.9
1	A	161	GLU	2.8
1	A	158	GLY	2.7
1	A	137	LEU	2.7
1	A	279	THR	2.7
3	C	225	GLY	2.7
2	B	188	ARG	2.6
1	A	177	MET	2.6
2	B	152	GLY	2.6
1	A	8	VAL	2.6
1	A	55	VAL	2.6
1	A	309	ARG	2.6
1	A	217	PRO	2.5
1	A	86	VAL	2.5
1	A	258	PHE	2.5
1	A	147	GLY	2.4
1	A	280	ASN	2.3
1	A	172	VAL	2.3
1	A	146	CYS	2.3
1	A	239	VAL	2.3
1	A	190	LEU	2.3
1	A	216	LEU	2.2
3	C	226	PRO	2.1
1	A	76	GLY	2.1
1	A	252	ILE	2.1
1	A	65	THR	2.1
2	B	155	ARG	2.1
1	A	59	ALA	2.0
1	A	264	HIS	2.0

6.2 Non-standard residues in protein, DNA, RNA chains ⓘ

There are no non-standard protein/DNA/RNA residues in this entry.

6.3 Carbohydrates ⓘ

There are no carbohydrates in this entry.

6.4 Ligands [i](#)

In the following table, the Atoms column lists the number of modelled atoms in the group and the number defined in the chemical component dictionary. LLDF column lists the quality of electron density of the group with respect to its neighbouring residues in protein, DNA or RNA chains. The B-factors column lists the minimum, median, 95th percentile and maximum values of B factors of atoms in the group. The column labelled 'Q< 0.9' lists the number of atoms with occupancy less than 0.9.

Mol	Type	Chain	Res	Atoms	RSCC	RSR	LLDF	B-factors(Å ²)	Q<0.9
5	STE	A	405	20/20	0.68	0.40	9.67	101,116,139,140	0
5	STE	A	407	20/20	0.79	0.47	2.83	114,121,129,130	0
5	STE	A	404	20/20	0.80	0.28	1.24	88,110,126,127	0
4	ZMA	A	401	25/25	0.80	0.42	0.92	149,163,194,198	0
5	STE	A	403	20/20	0.76	0.23	0.49	95,108,166,167	0
6	LMT	A	408	35/35	0.66	0.18	-0.56	92,139,157,158	0
5	STE	A	402	20/20	0.68	0.53	-	113,126,140,142	0
5	STE	A	406	20/20	0.71	0.29	-	110,118,136,138	0

6.5 Other polymers [i](#)

There are no such residues in this entry.