



# Full wwPDB X-ray Structure Validation Report ⓘ

Feb 13, 2017 – 03:57 pm GMT

PDB ID : 2VHA  
Title : DEBP  
Authors : Hu, Y.L.; Fan, C.-P.; Fu, G.S.; Zhu, D.Y.; Jin, Q.; Wang, D.-C.  
Deposited on : 2007-11-20  
Resolution : 1.00 Å(reported)

This is a Full wwPDB X-ray Structure Validation Report for a publicly released PDB entry.

We welcome your comments at [validation@mail.wwpdb.org](mailto:validation@mail.wwpdb.org)

A user guide is available at

<http://wwpdb.org/validation/2016/XrayValidationReportHelp>

with specific help available everywhere you see the ⓘ symbol.

---

The following versions of software and data (see [references ⓘ](#)) were used in the production of this report:

MolProbity : 4.02b-467  
Mogul : 1.7.2 (RC1), CSD as538be (2017)  
Xtriage (Phenix) : 1.9-1692  
EDS : trunk28620  
Percentile statistics : 20161228.v01 (using entries in the PDB archive December 28th 2016)  
Refmac : 5.8.0135  
CCP4 : 6.5.0  
Ideal geometry (proteins) : Engh & Huber (2001)  
Ideal geometry (DNA, RNA) : Parkinson et al. (1996)  
Validation Pipeline (wwPDB-VP) : recalc28949

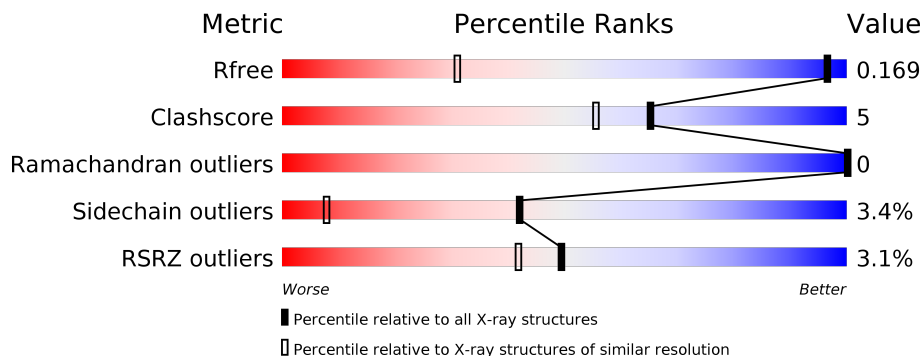
# 1 Overall quality at a glance ⓘ

The following experimental techniques were used to determine the structure:

*X-RAY DIFFRACTION*

The reported resolution of this entry is 1.00 Å.

Percentile scores (ranging between 0-100) for global validation metrics of the entry are shown in the following graphic. The table shows the number of entries on which the scores are based.



Metric	Whole archive (#Entries)	Similar resolution (#Entries, resolution range(Å))
$R_{free}$	100719	1400 (1.10-0.90)
Clashscore	112137	1005 (1.08-0.92)
Ramachandran outliers	110173	1411 (1.10-0.90)
Sidechain outliers	110143	1410 (1.10-0.90)
RSRZ outliers	101464	1410 (1.10-0.90)

The table below summarises the geometric issues observed across the polymeric chains and their fit to the electron density. The red, orange, yellow and green segments on the lower bar indicate the fraction of residues that contain outliers for  $\geq 3$ , 2, 1 and 0 types of geometric quality criteria. A grey segment represents the fraction of residues that are not modelled. The numeric value for each fraction is indicated below the corresponding segment, with a dot representing fractions  $\leq 5\%$ . The upper red bar (where present) indicates the fraction of residues that have poor fit to the electron density. The numeric value is given above the bar.

Mol	Chain	Length	Quality of chain
1	A	287	<div> <div>2%</div> <div> <div></div> <div>84%</div> <div>11%</div> <div>••</div> </div> </div>
1	B	287	<div> <div>3%</div> <div> <div></div> <div>83%</div> <div>13%</div> <div>••</div> </div> </div>

The following table lists non-polymeric compounds, carbohydrate monomers and non-standard residues in protein, DNA, RNA chains that are outliers for geometric or electron-density-fit criteria:

Mol	Type	Chain	Res	Chirality	Geometry	Clashes	Electron density
3	TRS	B	1281	-	-	-	X

## 2 Entry composition [i](#)

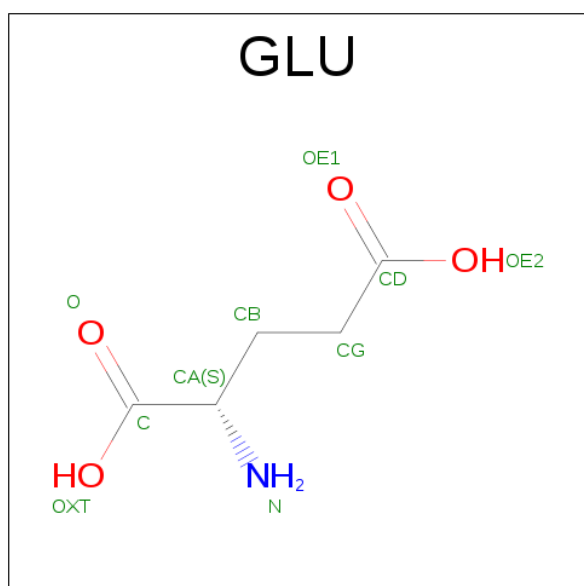
There are 4 unique types of molecules in this entry. The entry contains 5227 atoms, of which 0 are hydrogens and 0 are deuteriums.

In the tables below, the ZeroOcc column contains the number of atoms modelled with zero occupancy, the AltConf column contains the number of residues with at least one atom in alternate conformation and the Trace column contains the number of residues modelled with at most 2 atoms.

- Molecule 1 is a protein called PERIPLASMIC BINDING TRANSPORT PROTEIN.

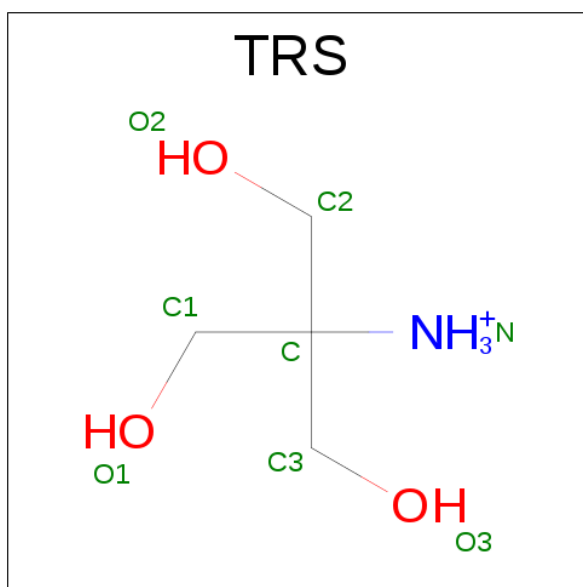
Mol	Chain	Residues	Atoms					ZeroOcc	AltConf	Trace
1	A	277	Total	C	N	O	S	0	20	1
			2215	1393	384	428	10			
1	B	277	Total	C	N	O	S	0	25	1
			2246	1413	385	436	12			

- Molecule 2 is GLUTAMIC ACID (three-letter code: GLU) (formula: C<sub>5</sub>H<sub>9</sub>NO<sub>4</sub>).



Mol	Chain	Residues	Atoms				ZeroOcc	AltConf
2	A	1	Total	C	N	O	0	0
			10	5	1	4		
2	B	1	Total	C	N	O	0	0
			10	5	1	4		

- Molecule 3 is 2-AMINO-2-HYDROXYMETHYL-PROPANE-1,3-DIOL (three-letter code: TRS) (formula: C<sub>4</sub>H<sub>12</sub>NO<sub>3</sub>).



Mol	Chain	Residues	Atoms				ZeroOcc	AltConf
3	A	1	Total	C	N	O	0	0
			8	4	1	3		
3	B	1	Total	C	N	O	0	0
			8	4	1	3		

- Molecule 4 is water.

Mol	Chain	Residues	Atoms		ZeroOcc	AltConf
4	A	370	Total	O	0	0
			370	370		
4	B	360	Total	O	0	0
			360	360		



## 4 Data and refinement statistics

Property	Value	Source
Space group	P 1 21 1	Depositor
Cell constants a, b, c, $\alpha$ , $\beta$ , $\gamma$	48.41Å 68.18Å 80.21Å 90.00° 98.78° 90.00°	Depositor
Resolution (Å)	10.00 – 1.00 26.96 – 1.00	Depositor EDS
% Data completeness (in resolution range)	87.2 (10.00-1.00) 87.5 (26.96-1.00)	Depositor EDS
$R_{merge}$	0.05	Depositor
$R_{sym}$	(Not available)	Depositor
$\langle I/\sigma(I) \rangle$ <sup>1</sup>	3.25 (at 1.00Å)	Xtriage
Refinement program	SHELXL-97	Depositor
R, $R_{free}$	0.136 , 0.169 0.144 , 0.169	Depositor DCC
$R_{free}$ test set	12723 reflections (5.51%)	DCC
Wilson B-factor (Å <sup>2</sup> )	7.6	Xtriage
Anisotropy	0.191	Xtriage
Bulk solvent $k_{sol}$ (e/Å <sup>3</sup> ), $B_{sol}$ (Å <sup>2</sup> )	0.34 , 61.2	EDS
L-test for twinning <sup>2</sup>	$\langle  L  \rangle = 0.49$ , $\langle L^2 \rangle = 0.33$	Xtriage
Estimated twinning fraction	No twinning to report.	Xtriage
$F_o, F_c$ correlation	0.98	EDS
Total number of atoms	5227	wwPDB-VP
Average B, all atoms (Å <sup>2</sup> )	14.0	wwPDB-VP

Xtriage's analysis on translational NCS is as follows: *The analyses of the Patterson function reveals a significant off-origin peak that is 72.45 % of the origin peak, indicating pseudo translational symmetry. The chance of finding a peak of this or larger height randomly in a structure without pseudo translational symmetry is equal to 2.1964e-06. The detected translational NCS is most likely also responsible for the elevated intensity ratio.*

<sup>1</sup> Intensities estimated from amplitudes.

<sup>2</sup> Theoretical values of  $\langle |L| \rangle$ ,  $\langle L^2 \rangle$  for acentric reflections are 0.5, 0.333 respectively for untwinned datasets, and 0.375, 0.2 for perfectly twinned datasets.

## 5 Model quality

### 5.1 Standard geometry

Bond lengths and bond angles in the following residue types are not validated in this section: TRS

The Z score for a bond length (or angle) is the number of standard deviations the observed value is removed from the expected value. A bond length (or angle) with  $|Z| > 5$  is considered an outlier worth inspection. RMSZ is the root-mean-square of all Z scores of the bond lengths (or angles).

Mol	Chain	Bond lengths		Bond angles	
		RMSZ	# Z  >5	RMSZ	# Z  >5
1	A	0.75	0/2351	1.28	18/3162 (0.6%)
1	B	0.76	0/2390	1.19	13/3215 (0.4%)
All	All	0.75	0/4741	1.24	31/6377 (0.5%)

There are no bond length outliers.

All (31) bond angle outliers are listed below:

Mol	Chain	Res	Type	Atoms	Z	Observed(°)	Ideal(°)
1	A	124	ASP	CB-CG-OD1	20.04	136.33	118.30
1	A	124	ASP	CB-CG-OD2	-19.16	101.06	118.30
1	B	124	ASP	CB-CG-OD2	-12.30	107.23	118.30
1	B	121	ASP	CB-CG-OD1	10.30	127.57	118.30
1	A	157	ARG	NE-CZ-NH2	-8.46	116.07	120.30
1	A	197	ASP	CB-CG-OD1	-8.01	111.09	118.30
1	A	216	ARG	NE-CZ-NH1	7.66	124.13	120.30
1	A	216	ARG	NE-CZ-NH2	-7.65	116.48	120.30
1	A	270	PHE	CB-CG-CD1	-7.58	115.49	120.80
1	B	124	ASP	CB-CG-OD1	7.54	125.09	118.30
1	A	190	ARG	NE-CZ-NH1	7.04	123.82	120.30
1	B	197[A]	ASP	CB-CG-OD2	-6.85	112.14	118.30
1	B	197[B]	ASP	CB-CG-OD2	-6.85	112.14	118.30
1	B	120	GLY	CA-C-O	6.70	132.65	120.60
1	B	175	ARG	NE-CZ-NH2	6.67	123.64	120.30
1	B	75	ARG	NE-CZ-NH2	-6.64	116.98	120.30
1	A	190	ARG	NE-CZ-NH2	-6.42	117.09	120.30
1	A	151	GLU	OE1-CD-OE2	-6.23	115.83	123.30
1	A	264	ASP	CB-CG-OD1	5.96	123.67	118.30
1	B	190	ARG	NE-CZ-NH2	-5.80	117.40	120.30
1	A	118	LYS	C-N-CA	5.79	134.46	122.30
1	A	277	ALA	C-N-CA	-5.68	107.51	121.70

*Continued on next page...*

*Continued from previous page...*

Mol	Chain	Res	Type	Atoms	Z	Observed(°)	Ideal(°)
1	A	244	ASP	CB-CG-OD2	-5.57	113.29	118.30
1	A	124	ASP	N-CA-CB	5.56	120.60	110.60
1	B	211	TYR	CB-CG-CD1	5.54	124.33	121.00
1	A	222	PHE	CB-CG-CD1	-5.41	117.02	120.80
1	B	222	PHE	CB-CG-CD2	5.30	124.51	120.80
1	A	264	ASP	CB-CG-OD2	-5.18	113.64	118.30
1	B	75	ARG	NE-CZ-NH1	5.18	122.89	120.30
1	A	197	ASP	CB-CG-OD2	5.10	122.89	118.30
1	B	120	GLY	O-C-N	-5.03	114.64	122.70

There are no chirality outliers.

There are no planarity outliers.

## 5.2 Too-close contacts

In the following table, the Non-H and H(model) columns list the number of non-hydrogen atoms and hydrogen atoms in the chain respectively. The H(added) column lists the number of hydrogen atoms added and optimized by MolProbity. The Clashes column lists the number of clashes within the asymmetric unit, whereas Symm-Clashes lists symmetry related clashes.

Mol	Chain	Non-H	H(model)	H(added)	Clashes	Symm-Clashes
1	A	2215	0	2228	21	0
1	B	2246	0	2258	22	0
2	A	10	0	5	0	0
2	B	10	0	5	0	0
3	A	8	0	12	0	0
3	B	8	0	12	0	0
4	A	370	0	0	12	0
4	B	360	0	0	11	0
All	All	5227	0	4520	43	0

The all-atom clashscore is defined as the number of clashes found per 1000 atoms (including hydrogen atoms). The all-atom clashscore for this structure is 5.

All (43) close contacts within the same asymmetric unit are listed below, sorted by their clash magnitude.

Atom-1	Atom-2	Interatomic distance (Å)	Clash overlap (Å)
1:A:71[B]:THR:HG21	4:A:2139:HOH:O	1.79	0.81
1:B:71[B]:THR:HG21	4:B:2125:HOH:O	1.82	0.78
1:A:60:LYS:HE2	4:A:2118:HOH:O	1.85	0.76

*Continued on next page...*

*Continued from previous page...*

Atom-1	Atom-2	Interatomic distance (Å)	Clash overlap (Å)
1:B:136[B]:THR:HG21	1:B:164:HIS:ND1	2.04	0.73
1:A:191:ALA:O	1:A:256:LEU:HD12	1.89	0.72
1:A:57:LYS:HD3	4:A:2051:HOH:O	1.89	0.70
1:A:129[B]:LYS:NZ	1:A:154:MET:HG2	2.07	0.70
1:B:279:ASN:N	4:B:2359:HOH:O	2.29	0.66
1:A:60:LYS:HE3	4:A:2018:HOH:O	1.96	0.64
1:A:202:VAL:HG11	4:A:2201:HOH:O	1.98	0.64
1:B:232[B]:GLN:HG2	4:B:2304:HOH:O	2.00	0.61
1:B:147:LYS:HD2	4:B:2212:HOH:O	2.00	0.60
1:A:118:LYS:HG3	1:A:200:ASP:OD2	2.02	0.59
1:B:136[B]:THR:OG1	1:B:139:THR:HG21	2.03	0.59
1:A:123:LYS:HD3	4:A:2201:HOH:O	2.02	0.59
1:B:107:ILE:O	1:B:266[B]:MET:HE3	2.04	0.57
1:A:143:VAL:HG22	4:A:2107:HOH:O	2.06	0.55
1:B:136[B]:THR:HG22	1:B:167:SER:OG	2.07	0.54
1:B:66[B]:LYS:HE2	4:B:2117:HOH:O	2.07	0.53
1:A:265:GLU:HG2	1:A:266:MET:N	2.23	0.53
1:A:129[B]:LYS:HG2	4:A:2235:HOH:O	2.09	0.53
1:A:126:ALA:O	1:A:129[A]:LYS:HE3	2.10	0.52
1:B:4:PRO:HG2	4:B:2008:HOH:O	2.09	0.52
4:A:2024:HOH:O	1:B:66[B]:LYS:HD3	2.10	0.50
1:B:148[A]:LEU:HG	1:B:154[A]:MET:SD	2.52	0.50
1:A:129[B]:LYS:HZ2	1:A:154:MET:HA	1.78	0.49
1:A:117:LYS:HD2	1:A:198:ASN:ND2	2.30	0.47
1:A:20:VAL:CG1	1:A:68:ILE:HG13	2.45	0.47
1:A:129[B]:LYS:HD3	4:A:2234:HOH:O	2.13	0.47
1:B:232[A]:GLN:HB3	4:B:2304:HOH:O	2.15	0.46
1:B:232[B]:GLN:NE2	4:B:2307:HOH:O	2.49	0.45
1:B:150:GLU:HG3	4:B:2216:HOH:O	2.16	0.45
1:B:118:LYS:NZ	1:B:197[B]:ASP:OD1	2.49	0.45
1:A:67[B]:LEU:HD11	4:A:2096:HOH:O	2.16	0.43
1:A:129[B]:LYS:HG2	4:A:2234:HOH:O	2.18	0.43
1:B:20:VAL:CG1	1:B:68:ILE:HG13	2.48	0.43
1:B:132:ALA:O	1:B:177[A]:VAL:HG22	2.18	0.43
1:B:129[B]:LYS:HG3	1:B:154[B]:MET:CE	2.49	0.43
1:B:118:LYS:HE3	4:B:2189:HOH:O	2.19	0.42
1:B:253:PRO:HG2	4:B:2028:HOH:O	2.18	0.42
1:A:129[B]:LYS:HZ3	1:A:154:MET:HG2	1.83	0.40

There are no symmetry-related clashes.

## 5.3 Torsion angles

### 5.3.1 Protein backbone

In the following table, the Percentiles column shows the percent Ramachandran outliers of the chain as a percentile score with respect to all X-ray entries followed by that with respect to entries of similar resolution.

The Analysed column shows the number of residues for which the backbone conformation was analysed, and the total number of residues.

Mol	Chain	Analysed	Favoured	Allowed	Outliers	Percentiles	
1	A	294/287 (102%)	289 (98%)	5 (2%)	0	100	100
1	B	299/287 (104%)	295 (99%)	4 (1%)	0	100	100
All	All	593/574 (103%)	584 (98%)	9 (2%)	0	100	100

There are no Ramachandran outliers to report.

### 5.3.2 Protein sidechains

In the following table, the Percentiles column shows the percent sidechain outliers of the chain as a percentile score with respect to all X-ray entries followed by that with respect to entries of similar resolution.

The Analysed column shows the number of residues for which the sidechain conformation was analysed, and the total number of residues.

Mol	Chain	Analysed	Rotameric	Outliers	Percentiles	
1	A	256/247 (104%)	248 (97%)	8 (3%)	45	10
1	B	261/247 (106%)	254 (97%)	7 (3%)	50	12
All	All	517/494 (105%)	502 (97%)	15 (3%)	42	11

All (15) residues with a non-rotameric sidechain are listed below:

Mol	Chain	Res	Type
1	A	117	LYS
1	A	147[A]	LYS
1	A	147[B]	LYS
1	A	197	ASP
1	A	217	LYS
1	A	232	GLN
1	A	265	GLU
1	A	274	ASN

*Continued on next page...*

*Continued from previous page...*

Mol	Chain	Res	Type
1	B	60	LYS
1	B	81	ASN
1	B	118	LYS
1	B	194[A]	LYS
1	B	198	ASN
1	B	204	LYS
1	B	215	LEU

Some sidechains can be flipped to improve hydrogen bonding and reduce clashes. All (6) such sidechains are listed below:

Mol	Chain	Res	Type
1	A	64	GLN
1	A	73	GLN
1	A	152	GLN
1	A	274	ASN
1	B	59	ASN
1	B	81	ASN

### 5.3.3 RNA [i](#)

There are no RNA molecules in this entry.

## 5.4 Non-standard residues in protein, DNA, RNA chains [i](#)

There are no non-standard protein/DNA/RNA residues in this entry.

## 5.5 Carbohydrates [i](#)

There are no carbohydrates in this entry.

## 5.6 Ligand geometry [i](#)

4 ligands are modelled in this entry.

In the following table, the Counts columns list the number of bonds (or angles) for which Mogul statistics could be retrieved, the number of bonds (or angles) that are observed in the model and the number of bonds (or angles) that are defined in the chemical component dictionary. The Link column lists molecule types, if any, to which the group is linked. The Z score for a bond length (or angle) is the number of standard deviations the observed value is removed from the expected

value. A bond length (or angle) with  $|Z| > 2$  is considered an outlier worth inspection. RMSZ is the root-mean-square of all Z scores of the bond lengths (or angles).

Mol	Type	Chain	Res	Link	Bond lengths			Bond angles		
					Counts	RMSZ	$\# Z  > 2$	Counts	RMSZ	$\# Z  > 2$
2	GLU	A	1280	-	1,9,9	2.44	1 (100%)	1,11,11	1.37	0
3	TRS	A	1281	-	7,7,7	0.98	0	9,9,9	1.31	1 (11%)
2	GLU	B	1280	-	1,9,9	2.19	1 (100%)	1,11,11	1.42	0
3	TRS	B	1281	-	7,7,7	0.85	0	9,9,9	0.93	1 (11%)

In the following table, the Chirals column lists the number of chiral outliers, the number of chiral centers analysed, the number of these observed in the model and the number defined in the chemical component dictionary. Similar counts are reported in the Torsion and Rings columns. '-' means no outliers of that kind were identified.

Mol	Type	Chain	Res	Link	Chirals	Torsions	Rings
2	GLU	A	1280	-	-	0/3/9/9	0/0/0/0
3	TRS	A	1281	-	-	0/9/9/9	0/0/0/0
2	GLU	B	1280	-	-	0/3/9/9	0/0/0/0
3	TRS	B	1281	-	-	0/9/9/9	0/0/0/0

All (2) bond length outliers are listed below:

Mol	Chain	Res	Type	Atoms	Z	Observed(Å)	Ideal(Å)
2	A	1280	GLU	CB-CG	-2.44	1.41	1.53
2	B	1280	GLU	CB-CG	-2.19	1.42	1.53

All (2) bond angle outliers are listed below:

Mol	Chain	Res	Type	Atoms	Z	Observed(°)	Ideal(°)
3	B	1281	TRS	C1-C-N	2.03	112.05	107.73
3	A	1281	TRS	C3-C-N	2.39	112.80	107.73

There are no chirality outliers.

There are no torsion outliers.

There are no ring outliers.

No monomer is involved in short contacts.

## 5.7 Other polymers ⓘ

There are no such residues in this entry.

## 5.8 Polymer linkage issues ⓘ

There are no chain breaks in this entry.

## 6 Fit of model and data ⓘ

### 6.1 Protein, DNA and RNA chains ⓘ

In the following table, the column labelled ‘#RSRZ > 2’ contains the number (and percentage) of RSRZ outliers, followed by percent RSRZ outliers for the chain as percentile scores relative to all X-ray entries and entries of similar resolution. The OWAB column contains the minimum, median, 95<sup>th</sup> percentile and maximum values of the occupancy-weighted average B-factor per residue. The column labelled ‘Q < 0.9’ lists the number of (and percentage) of residues with an average occupancy less than 0.9.

Mol	Chain	Analysed	<RSRZ>	#RSRZ>2	OWAB(Å <sup>2</sup> )	Q<0.9
1	A	277/287 (96%)	0.06	7 (2%) 58 50	6, 10, 26, 46	1 (0%)
1	B	277/287 (96%)	0.10	10 (3%) 43 35	6, 10, 28, 48	0
All	All	554/574 (96%)	0.08	17 (3%) 49 42	6, 10, 27, 48	1 (0%)

All (17) RSRZ outliers are listed below:

Mol	Chain	Res	Type	RSRZ
1	B	279	ASN	15.2
1	A	278	LEU	6.3
1	B	197[A]	ASP	6.0
1	A	3	ALA	5.2
1	B	3	ALA	5.1
1	B	278	LEU	4.4
1	A	264	ASP	4.3
1	A	277	ALA	4.1
1	B	121	ASP	3.5
1	A	279	ASN	3.2
1	B	119	GLY	2.6
1	A	276	LYS	2.6
1	B	271	LYS	2.5
1	A	265	GLU	2.3
1	B	120	GLY	2.1
1	B	268	ALA	2.0
1	B	277	ALA	2.0

### 6.2 Non-standard residues in protein, DNA, RNA chains ⓘ

There are no non-standard protein/DNA/RNA residues in this entry.

### 6.3 Carbohydrates [i](#)

There are no carbohydrates in this entry.

### 6.4 Ligands [i](#)

In the following table, the Atoms column lists the number of modelled atoms in the group and the number defined in the chemical component dictionary. LLDF column lists the quality of electron density of the group with respect to its neighbouring residues in protein, DNA or RNA chains. The B-factors column lists the minimum, median, 95<sup>th</sup> percentile and maximum values of B factors of atoms in the group. The column labelled 'Q < 0.9' lists the number of atoms with occupancy less than 0.9.

Mol	Type	Chain	Res	Atoms	RSCC	RSR	LLDF	B-factors( $\text{\AA}^2$ )	Q<0.9
3	TRS	B	1281	8/8	0.93	0.12	2.54	14,19,24,25	0
3	TRS	A	1281	8/8	0.94	0.13	1.93	15,19,20,21	0
2	GLU	A	1280	10/10	0.99	0.06	-0.21	5,6,9,9	0
2	GLU	B	1280	10/10	0.99	0.06	-0.90	5,6,8,9	0

### 6.5 Other polymers [i](#)

There are no such residues in this entry.