



# Full wwPDB X-ray Structure Validation Report ⓘ

Feb 13, 2017 – 03:35 pm GMT

PDB ID : 3VJI  
Title : Human PPAR gamma ligand binding domain in complex with JKPL53  
Authors : Tomioka, D.; Kuwabara, N.; Hashimoto, H.; Sato, M.; Shimizu, T.  
Deposited on : 2011-10-20  
Resolution : 2.61 Å(reported)

This is a Full wwPDB X-ray Structure Validation Report for a publicly released PDB entry.

We welcome your comments at [validation@mail.wwpdb.org](mailto:validation@mail.wwpdb.org)

A user guide is available at

<http://wwpdb.org/validation/2016/XrayValidationReportHelp>

with specific help available everywhere you see the ⓘ symbol.

---

The following versions of software and data (see [references ⓘ](#)) were used in the production of this report:

MolProbity : 4.02b-467  
Mogul : 1.7.2 (RC1), CSD as538be (2017)  
Xtriage (Phenix) : 1.9-1692  
EDS : trunk28620  
Percentile statistics : 20161228.v01 (using entries in the PDB archive December 28th 2016)  
Refmac : 5.8.0135  
CCP4 : 6.5.0  
Ideal geometry (proteins) : Engh & Huber (2001)  
Ideal geometry (DNA, RNA) : Parkinson et al. (1996)  
Validation Pipeline (wwPDB-VP) : recalc28949

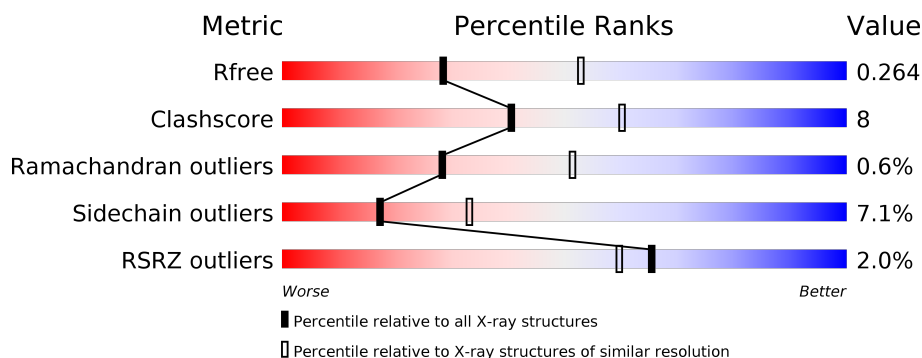
# 1 Overall quality at a glance

The following experimental techniques were used to determine the structure:

## *X-RAY DIFFRACTION*

The reported resolution of this entry is 2.61 Å.

Percentile scores (ranging between 0-100) for global validation metrics of the entry are shown in the following graphic. The table shows the number of entries on which the scores are based.



Metric	Whole archive (#Entries)	Similar resolution (#Entries, resolution range(Å))
$R_{free}$	100719	2983 (2.64-2.60)
Clashscore	112137	3351 (2.64-2.60)
Ramachandran outliers	110173	3298 (2.64-2.60)
Sidechain outliers	110143	3298 (2.64-2.60)
RSRZ outliers	101464	2992 (2.64-2.60)

The table below summarises the geometric issues observed across the polymeric chains and their fit to the electron density. The red, orange, yellow and green segments on the lower bar indicate the fraction of residues that contain outliers for  $\geq 3$ , 2, 1 and 0 types of geometric quality criteria. A grey segment represents the fraction of residues that are not modelled. The numeric value for each fraction is indicated below the corresponding segment, with a dot representing fractions  $\leq 5\%$ . The upper red bar (where present) indicates the fraction of residues that have poor fit to the electron density. The numeric value is given above the bar.

Mol	Chain	Length	Quality of chain
1	A	286	<div> <div style="width: 100%; height: 10px; position: relative;"> <div style="position: absolute; top: -10px; left: 0;">%</div> <div style="position: absolute; top: 0; left: 0; width: 100%; height: 100%; background: linear-gradient(to right, red 0%, red 1%, orange 1%, orange 20%, yellow 20%, yellow 70%, green 70%, green 100%);"></div> <div style="position: absolute; bottom: -10px; left: 0;">70% 20% • 8%</div> </div> </div>
1	B	286	<div> <div style="width: 100%; height: 10px; position: relative;"> <div style="position: absolute; top: -10px; left: 0;">2%</div> <div style="position: absolute; top: 0; left: 0; width: 100%; height: 100%; background: linear-gradient(to right, red 0%, red 2%, orange 2%, orange 12%, yellow 12%, yellow 72%, green 72%, green 100%);"></div> <div style="position: absolute; bottom: -10px; left: 0;">72% 12% • 14%</div> </div> </div>

The following table lists non-polymeric compounds, carbohydrate monomers and non-standard residues in protein, DNA, RNA chains that are outliers for geometric or electron-density-fit criteria:

Mol	Type	Chain	Res	Chirality	Geometry	Clashes	Electron density
2	J53	A	501	-	-	-	X

## 2 Entry composition

There are 2 unique types of molecules in this entry. The entry contains 4087 atoms, of which 0 are hydrogens and 0 are deuteriums.

In the tables below, the ZeroOcc column contains the number of atoms modelled with zero occupancy, the AltConf column contains the number of residues with at least one atom in alternate conformation and the Trace column contains the number of residues modelled with at most 2 atoms.

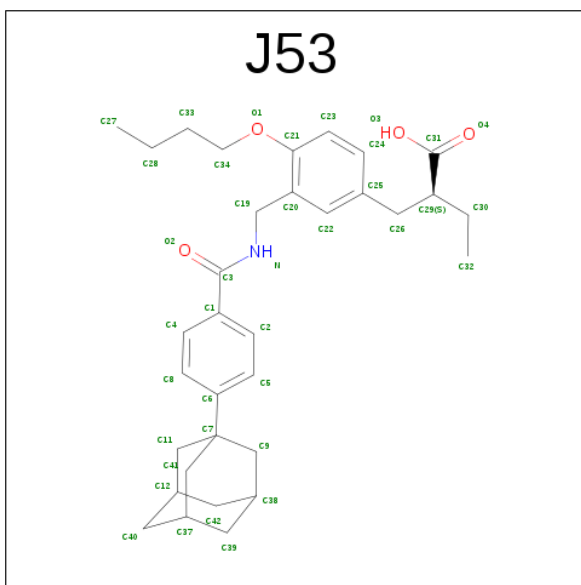
- Molecule 1 is a protein called Peroxisome proliferator-activated receptor gamma.

Mol	Chain	Residues	Atoms					ZeroOcc	AltConf	Trace
1	A	262	Total	C	N	O	S	0	0	0
			2087	1343	341	393	10			
1	B	245	Total	C	N	O	S	0	0	0
			1962	1270	321	362	9			

There are 8 discrepancies between the modelled and reference sequences:

Chain	Residue	Modelled	Actual	Comment	Reference
A	191	GLY	-	EXPRESSION TAG	UNP P37231
A	192	SER	-	EXPRESSION TAG	UNP P37231
A	193	HIS	-	EXPRESSION TAG	UNP P37231
A	194	MET	-	EXPRESSION TAG	UNP P37231
B	191	GLY	-	EXPRESSION TAG	UNP P37231
B	192	SER	-	EXPRESSION TAG	UNP P37231
B	193	HIS	-	EXPRESSION TAG	UNP P37231
B	194	MET	-	EXPRESSION TAG	UNP P37231

- Molecule 2 is (2S)-2-{4-BUTOXY-3-[(4-[(3S,5S,7S)-TRICYCLO[3.3.1.1 3,7 ]DEC-1-YL]BENZOYL}AMINO)METHYL]BENZYL}BUTANOIC ACID (three-letter code: J53) (formula: C<sub>33</sub>H<sub>43</sub>NO<sub>4</sub>).

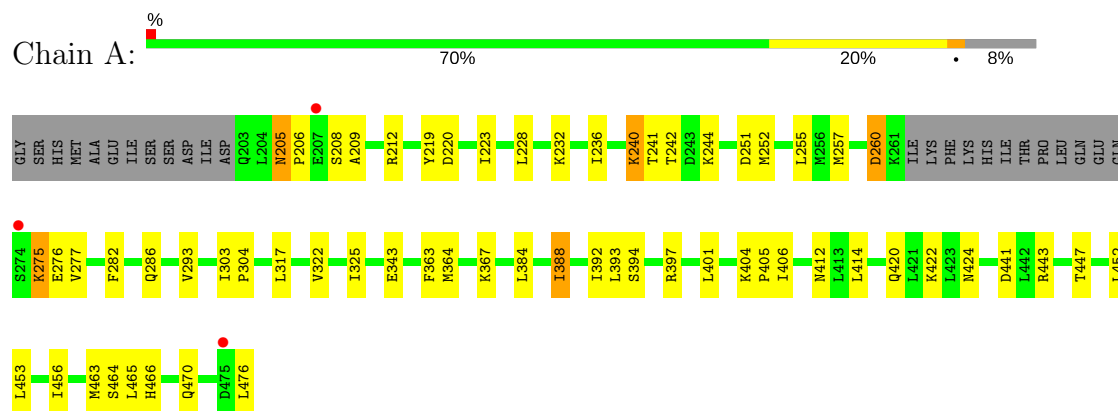


Mol	Chain	Residues	Atoms				ZeroOcc	AltConf
2	A	1	Total	C	N	O	0	0
			38	33	1	4		

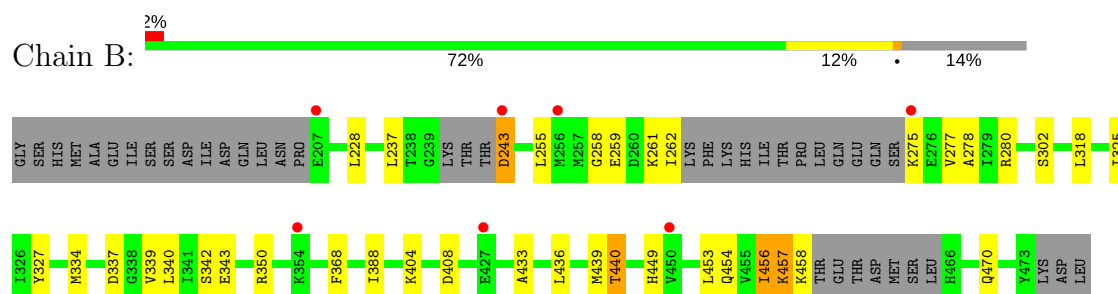
### 3 Residue-property plots

These plots are drawn for all protein, RNA and DNA chains in the entry. The first graphic for a chain summarises the proportions of the various outlier classes displayed in the second graphic. The second graphic shows the sequence view annotated by issues in geometry and electron density. Residues are color-coded according to the number of geometric quality criteria for which they contain at least one outlier: green = 0, yellow = 1, orange = 2 and red = 3 or more. A red dot above a residue indicates a poor fit to the electron density ( $RSRZ > 2$ ). Stretches of 2 or more consecutive residues without any outlier are shown as a green connector. Residues present in the sample, but not in the model, are shown in grey.

- Molecule 1: Peroxisome proliferator-activated receptor gamma



- Molecule 1: Peroxisome proliferator-activated receptor gamma



## 4 Data and refinement statistics

Property	Value	Source
Space group	C 1 2 1	Depositor
Cell constants a, b, c, $\alpha$ , $\beta$ , $\gamma$	93.15Å 60.61Å 118.77Å 90.00° 103.79° 90.00°	Depositor
Resolution (Å)	19.99 – 2.61 19.99 – 2.61	Depositor EDS
% Data completeness (in resolution range)	83.5 (19.99-2.61) 83.7 (19.99-2.61)	Depositor EDS
$R_{merge}$	0.04	Depositor
$R_{sym}$	(Not available)	Depositor
$\langle I/\sigma(I) \rangle$ <sup>1</sup>	4.17 (at 2.59Å)	Xtriage
Refinement program	REFMAC 5.6.0113	Depositor
R, $R_{free}$	0.212 , 0.280 0.200 , 0.264	Depositor DCC
$R_{free}$ test set	839 reflections (5.33%)	DCC
Wilson B-factor (Å <sup>2</sup> )	64.2	Xtriage
Anisotropy	0.022	Xtriage
Bulk solvent $k_{sol}$ (e/Å <sup>3</sup> ), $B_{sol}$ (Å <sup>2</sup> )	0.36 , 42.1	EDS
L-test for twinning <sup>2</sup>	$\langle  L  \rangle = 0.49$ , $\langle L^2 \rangle = 0.32$	Xtriage
Estimated twinning fraction	No twinning to report.	Xtriage
$F_o, F_c$ correlation	0.95	EDS
Total number of atoms	4087	wwPDB-VP
Average B, all atoms (Å <sup>2</sup> )	58.0	wwPDB-VP

Xtriage's analysis on translational NCS is as follows: *The largest off-origin peak in the Patterson function is 5.94% of the height of the origin peak. No significant pseudotranslation is detected.*

<sup>1</sup>Intensities estimated from amplitudes.

<sup>2</sup>Theoretical values of  $\langle |L| \rangle$ ,  $\langle L^2 \rangle$  for acentric reflections are 0.5, 0.333 respectively for untwinned datasets, and 0.375, 0.2 for perfectly twinned datasets.

## 5 Model quality

### 5.1 Standard geometry

Bond lengths and bond angles in the following residue types are not validated in this section: J53

The Z score for a bond length (or angle) is the number of standard deviations the observed value is removed from the expected value. A bond length (or angle) with  $|Z| > 5$  is considered an outlier worth inspection. RMSZ is the root-mean-square of all Z scores of the bond lengths (or angles).

Mol	Chain	Bond lengths		Bond angles	
		RMSZ	$\# Z  > 5$	RMSZ	$\# Z  > 5$
1	A	0.61	0/2121	0.67	0/2857
1	B	0.59	0/1993	0.63	0/2681
All	All	0.60	0/4114	0.65	0/5538

Chiral center outliers are detected by calculating the chiral volume of a chiral center and verifying if the center is modelled as a planar moiety or with the opposite hand. A planarity outlier is detected by checking planarity of atoms in a peptide group, atoms in a mainchain group or atoms of a sidechain that are expected to be planar.

Mol	Chain	#Chirality outliers	#Planarity outliers
1	A	0	1

There are no bond length outliers.

There are no bond angle outliers.

There are no chirality outliers.

All (1) planarity outliers are listed below:

Mol	Chain	Res	Type	Group
1	A	240	LYS	Peptide

### 5.2 Too-close contacts

In the following table, the Non-H and H(model) columns list the number of non-hydrogen atoms and hydrogen atoms in the chain respectively. The H(added) column lists the number of hydrogen atoms added and optimized by MolProbity. The Clashes column lists the number of clashes within the asymmetric unit, whereas Symm-Clashes lists symmetry related clashes.



Mol	Chain	Non-H	H(model)	H(added)	Clashes	Symm-Clashes
1	A	2087	0	2137	46	0
1	B	1962	0	2020	26	0
2	A	38	0	42	0	0
All	All	4087	0	4199	68	0

The all-atom clashscore is defined as the number of clashes found per 1000 atoms (including hydrogen atoms). The all-atom clashscore for this structure is 8.

All (68) close contacts within the same asymmetric unit are listed below, sorted by their clash magnitude.

Atom-1	Atom-2	Interatomic distance (Å)	Clash overlap (Å)
1:A:252:MET:CE	1:A:277:VAL:HG21	1.50	1.40
1:A:252:MET:HE3	1:A:277:VAL:HG21	1.13	1.13
1:B:453:LEU:O	1:B:456:ILE:HG22	1.51	1.10
1:A:252:MET:HE1	1:A:277:VAL:HG21	1.43	1.00
1:A:317:LEU:HD11	1:A:406:ILE:HD13	1.47	0.94
1:A:252:MET:HE3	1:A:277:VAL:CG2	2.01	0.87
1:A:252:MET:CE	1:A:277:VAL:CG2	2.47	0.80
1:A:456:ILE:CG2	1:A:463:MET:HE2	2.11	0.80
1:A:219:TYR:CZ	1:A:223:ILE:HD11	2.17	0.78
1:A:456:ILE:HG21	1:A:463:MET:CE	2.16	0.75
1:B:325:ILE:HG23	1:B:388:ILE:HD12	1.68	0.75
1:A:456:ILE:HG22	1:A:463:MET:HE2	1.69	0.75
1:B:456:ILE:HD13	1:B:456:ILE:O	1.87	0.74
1:A:286:GLN:HE22	1:A:465:LEU:HA	1.58	0.69
1:A:456:ILE:CG2	1:A:463:MET:CE	2.73	0.66
1:A:384:LEU:O	1:A:388:ILE:HG23	1.99	0.63
1:B:334:MET:HE2	1:B:368:PHE:HA	1.82	0.61
1:B:277:VAL:HG13	1:B:278:ALA:N	2.15	0.60
1:A:325:ILE:HD11	1:A:392:ILE:HG13	1.83	0.60
1:A:212:ARG:NH2	1:A:420:GLN:OE1	2.33	0.60
1:A:456:ILE:HG21	1:A:463:MET:HE1	1.84	0.58
1:A:228:LEU:HD12	1:A:232:LYS:HB3	1.86	0.58
1:A:465:LEU:HD22	1:A:470:GLN:HG3	1.84	0.57
1:A:452:LEU:O	1:A:456:ILE:HG12	2.05	0.56
1:A:252:MET:HE1	1:A:277:VAL:CG2	2.24	0.56
1:A:317:LEU:HD11	1:A:406:ILE:CD1	2.28	0.56
1:A:282:PHE:CE2	1:A:463:MET:HE3	2.42	0.55
1:A:286:GLN:NE2	1:A:465:LEU:HG	2.24	0.52
1:A:404:LYS:N	1:A:405:PRO:HD2	2.25	0.50
1:B:404:LYS:NZ	1:B:408:ASP:OD2	2.45	0.49
1:A:293:VAL:HG13	1:A:322:VAL:HG21	1.95	0.48

*Continued on next page...*

*Continued from previous page...*

Atom-1	Atom-2	Interatomic distance (Å)	Clash overlap (Å)
1:B:258:GLY:O	1:B:262:ILE:N	2.47	0.47
1:B:255:LEU:HD23	1:B:277:VAL:HG23	1.95	0.47
1:A:443:ARG:CZ	1:B:440:THR:HG21	2.45	0.46
1:B:327:TYR:HH	1:B:449:HIS:CE1	2.34	0.46
1:A:219:TYR:CE2	1:A:223:ILE:HD11	2.51	0.46
1:B:457:LYS:HZ3	1:B:457:LYS:HB2	1.81	0.46
1:A:404:LYS:N	1:A:405:PRO:CD	2.79	0.45
1:B:327:TYR:OH	1:B:449:HIS:CE1	2.68	0.45
1:A:206:PRO:O	1:A:209:ALA:HB3	2.16	0.45
1:A:325:ILE:HD11	1:A:392:ILE:CG1	2.47	0.45
1:B:449:HIS:CE1	1:B:453:LEU:HD11	2.52	0.45
1:A:251:ASP:OD1	1:A:251:ASP:C	2.55	0.44
1:B:243:ASP:OD1	1:B:243:ASP:N	2.50	0.44
1:A:465:LEU:HD23	1:A:466:HIS:N	2.33	0.44
1:A:286:GLN:HE22	1:A:465:LEU:HG	1.81	0.44
1:B:277:VAL:CG1	1:B:278:ALA:N	2.80	0.44
1:A:443:ARG:NH2	1:B:440:THR:HG21	2.33	0.44
1:A:394:SER:O	1:A:397:ARG:HG2	2.17	0.44
1:A:364:MET:O	1:A:367:LYS:HB2	2.18	0.43
1:A:443:ARG:CZ	1:B:440:THR:CG2	2.96	0.43
1:A:240:LYS:N	1:A:241:THR:HG23	2.34	0.42
1:A:414:LEU:HD13	1:B:433:ALA:CB	2.49	0.42
1:B:457:LYS:NZ	1:B:457:LYS:HB2	2.33	0.42
1:A:236:ILE:HG23	1:A:244:LYS:O	2.20	0.42
1:B:259:GLU:OE2	1:B:280:ARG:NH1	2.52	0.42
1:B:343:GLU:HG3	1:B:343:GLU:O	2.20	0.42
1:A:205:ASN:ND2	1:A:208:SER:H	2.18	0.42
1:A:255:LEU:HD12	1:A:255:LEU:O	2.19	0.42
1:B:337:ASP:O	1:B:350:ARG:N	2.43	0.42
1:A:260:ASP:OD2	1:A:260:ASP:N	2.53	0.41
1:A:241:THR:CG2	1:A:244:LYS:HB2	2.50	0.41
1:B:237:LEU:HD21	1:B:340:LEU:HG	2.01	0.41
1:B:436:LEU:O	1:B:439:MET:HB2	2.21	0.41
1:B:255:LEU:HD23	1:B:277:VAL:CG2	2.50	0.41
1:A:303:ILE:O	1:A:304:PRO:C	2.59	0.40
1:A:286:GLN:NE2	1:A:465:LEU:HA	2.33	0.40
1:B:325:ILE:HG12	1:B:388:ILE:HG23	2.03	0.40

There are no symmetry-related clashes.

## 5.3 Torsion angles

### 5.3.1 Protein backbone

In the following table, the Percentiles column shows the percent Ramachandran outliers of the chain as a percentile score with respect to all X-ray entries followed by that with respect to entries of similar resolution.

The Analysed column shows the number of residues for which the backbone conformation was analysed, and the total number of residues.

Mol	Chain	Analysed	Favoured	Allowed	Outliers	Percentiles	
1	A	258/286 (90%)	246 (95%)	11 (4%)	1 (0%)	38	61
1	B	237/286 (83%)	226 (95%)	9 (4%)	2 (1%)	22	42
All	All	495/572 (86%)	472 (95%)	20 (4%)	3 (1%)	28	51

All (3) Ramachandran outliers are listed below:

Mol	Chain	Res	Type
1	A	275	LYS
1	B	342	SER
1	B	261	LYS

### 5.3.2 Protein sidechains

In the following table, the Percentiles column shows the percent sidechain outliers of the chain as a percentile score with respect to all X-ray entries followed by that with respect to entries of similar resolution.

The Analysed column shows the number of residues for which the sidechain conformation was analysed, and the total number of residues.

Mol	Chain	Analysed	Rotameric	Outliers	Percentiles	
1	A	233/257 (91%)	213 (91%)	20 (9%)	12	23
1	B	218/257 (85%)	206 (94%)	12 (6%)	25	47
All	All	451/514 (88%)	419 (93%)	32 (7%)	17	33

All (32) residues with a non-rotameric sidechain are listed below:

Mol	Chain	Res	Type
1	A	205	ASN
1	A	220	ASP
1	A	242	THR

*Continued on next page...*

*Continued from previous page...*

Mol	Chain	Res	Type
1	A	257	MET
1	A	260	ASP
1	A	275	LYS
1	A	276	GLU
1	A	343	GLU
1	A	363	PHE
1	A	388	ILE
1	A	393	LEU
1	A	401	LEU
1	A	412	ASN
1	A	422	LYS
1	A	424	ASN
1	A	441	ASP
1	A	447	THR
1	A	453	LEU
1	A	464	SER
1	A	476	LEU
1	B	228	LEU
1	B	243	ASP
1	B	275	LYS
1	B	302	SER
1	B	318	LEU
1	B	339	VAL
1	B	440	THR
1	B	454	GLN
1	B	456	ILE
1	B	457	LYS
1	B	458	LYS
1	B	470	GLN

Some sidechains can be flipped to improve hydrogen bonding and reduce clashes. All (14) such sidechains are listed below:

Mol	Chain	Res	Type
1	A	205	ASN
1	A	286	GLN
1	A	294	GLN
1	A	314	GLN
1	A	323	HIS
1	A	410	GLN
1	A	412	ASN
1	A	415	GLN
1	A	424	ASN

*Continued on next page...*

*Continued from previous page...*

Mol	Chain	Res	Type
1	A	470	GLN
1	B	308	ASN
1	B	410	GLN
1	B	424	ASN
1	B	437	GLN

### 5.3.3 RNA [i](#)

There are no RNA molecules in this entry.

## 5.4 Non-standard residues in protein, DNA, RNA chains [i](#)

There are no non-standard protein/DNA/RNA residues in this entry.

## 5.5 Carbohydrates [i](#)

There are no carbohydrates in this entry.

## 5.6 Ligand geometry [i](#)

1 ligand is modelled in this entry.

In the following table, the Counts columns list the number of bonds (or angles) for which Mogul statistics could be retrieved, the number of bonds (or angles) that are observed in the model and the number of bonds (or angles) that are defined in the chemical component dictionary. The Link column lists molecule types, if any, to which the group is linked. The Z score for a bond length (or angle) is the number of standard deviations the observed value is removed from the expected value. A bond length (or angle) with  $|Z| > 2$  is considered an outlier worth inspection. RMSZ is the root-mean-square of all Z scores of the bond lengths (or angles).

Mol	Type	Chain	Res	Link	Bond lengths			Bond angles		
					Counts	RMSZ	$\# Z  > 2$	Counts	RMSZ	$\# Z  > 2$
2	J53	A	501	-	39,42,42	0.66	0	57,60,60	1.24	3 (5%)

In the following table, the Chirals column lists the number of chiral outliers, the number of chiral centers analysed, the number of these observed in the model and the number defined in the chemical component dictionary. Similar counts are reported in the Torsion and Rings columns. '-' means no outliers of that kind were identified.

Mol	Type	Chain	Res	Link	Chirals	Torsions	Rings
2	J53	A	501	-	-	0/26/57/57	0/2/5/5

There are no bond length outliers.

All (3) bond angle outliers are listed below:

Mol	Chain	Res	Type	Atoms	Z	Observed(°)	Ideal(°)
2	A	501	J53	O1-C21-C23	-2.46	118.71	124.00
2	A	501	J53	C30-C29-C31	-2.26	108.87	112.63
2	A	501	J53	O1-C21-C20	5.82	123.39	115.62

There are no chirality outliers.

There are no torsion outliers.

There are no ring outliers.

No monomer is involved in short contacts.

## 5.7 Other polymers [i](#)

There are no such residues in this entry.

## 5.8 Polymer linkage issues [i](#)

There are no chain breaks in this entry.

## 6 Fit of model and data [i](#)

### 6.1 Protein, DNA and RNA chains [i](#)

In the following table, the column labelled ‘#RSRZ > 2’ contains the number (and percentage) of RSRZ outliers, followed by percent RSRZ outliers for the chain as percentile scores relative to all X-ray entries and entries of similar resolution. The OWAB column contains the minimum, median, 95<sup>th</sup> percentile and maximum values of the occupancy-weighted average B-factor per residue. The column labelled ‘Q < 0.9’ lists the number of (and percentage) of residues with an average occupancy less than 0.9.

Mol	Chain	Analysed	<RSRZ>	#RSRZ>2	OWAB(Å <sup>2</sup> )	Q<0.9
1	A	262/286 (91%)	-0.21	3 (1%) 80 77	34, 54, 83, 109	0
1	B	245/286 (85%)	-0.14	7 (2%) 52 45	34, 54, 96, 112	0
All	All	507/572 (88%)	-0.18	10 (1%) 65 60	34, 54, 91, 112	0

All (10) RSRZ outliers are listed below:

Mol	Chain	Res	Type	RSRZ
1	B	207	GLU	4.8
1	B	243	ASP	3.4
1	A	207	GLU	3.2
1	B	256	MET	2.8
1	B	275	LYS	2.8
1	B	427	GLU	2.5
1	B	354	LYS	2.3
1	A	274	SER	2.1
1	B	450	VAL	2.0
1	A	475	ASP	2.0

### 6.2 Non-standard residues in protein, DNA, RNA chains [i](#)

There are no non-standard protein/DNA/RNA residues in this entry.

### 6.3 Carbohydrates [i](#)

There are no carbohydrates in this entry.

## 6.4 Ligands [i](#)

In the following table, the Atoms column lists the number of modelled atoms in the group and the number defined in the chemical component dictionary. LLDF column lists the quality of electron density of the group with respect to its neighbouring residues in protein, DNA or RNA chains. The B-factors column lists the minimum, median, 95<sup>th</sup> percentile and maximum values of B factors of atoms in the group. The column labelled 'Q< 0.9' lists the number of atoms with occupancy less than 0.9.

Mol	Type	Chain	Res	Atoms	RSCC	RSR	LLDF	B-factors(Å <sup>2</sup> )	Q<0.9
2	J53	A	501	38/38	0.74	0.31	2.95	64,81,93,97	0

## 6.5 Other polymers [i](#)

There are no such residues in this entry.