



Full wwPDB X-ray Structure Validation Report ⓘ

Feb 13, 2017 – 01:52 am GMT

PDB ID : 3VPL
Title : Crystal structure of a 2-fluoroxylotriosyl complex of the Vibrio sp. AX-4 Beta-1,3-xylanase
Authors : Watanabe, N.; Sakaguchi, K.
Deposited on : 2012-03-05
Resolution : 1.20 Å(reported)

This is a Full wwPDB X-ray Structure Validation Report for a publicly released PDB entry.

We welcome your comments at validation@mail.wwpdb.org

A user guide is available at

<http://wwpdb.org/validation/2016/XrayValidationReportHelp>

with specific help available everywhere you see the ⓘ symbol.

The following versions of software and data (see [references ⓘ](#)) were used in the production of this report:

MolProbity	:	4.02b-467
Mogul	:	1.7.2 (RC1), CSD as538be (2017)
Xtriage (Phenix)	:	1.9-1692
EDS	:	trunk28620
Percentile statistics	:	20161228.v01 (using entries in the PDB archive December 28th 2016)
Refmac	:	5.8.0135
CCP4	:	6.5.0
Ideal geometry (proteins)	:	Engh & Huber (2001)
Ideal geometry (DNA, RNA)	:	Parkinson et al. (1996)
Validation Pipeline (wwPDB-VP)	:	recalc28949

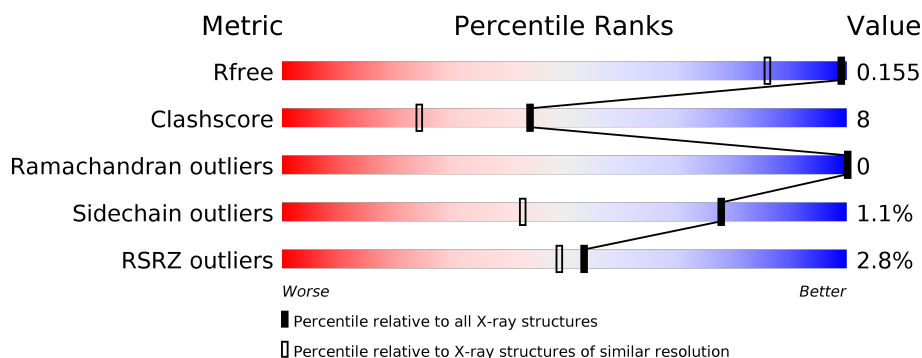
1 Overall quality at a glance

The following experimental techniques were used to determine the structure:

X-RAY DIFFRACTION

The reported resolution of this entry is 1.20 Å.

Percentile scores (ranging between 0-100) for global validation metrics of the entry are shown in the following graphic. The table shows the number of entries on which the scores are based.



Metric	Whole archive (#Entries)	Similar resolution (#Entries, resolution range(Å))
R_{free}	100719	1131 (1.24-1.16)
Clashscore	112137	1201 (1.24-1.16)
Ramachandran outliers	110173	1148 (1.24-1.16)
Sidechain outliers	110143	1147 (1.24-1.16)
RSRZ outliers	101464	1132 (1.24-1.16)

The table below summarises the geometric issues observed across the polymeric chains and their fit to the electron density. The red, orange, yellow and green segments on the lower bar indicate the fraction of residues that contain outliers for ≥ 3 , 2, 1 and 0 types of geometric quality criteria. A grey segment represents the fraction of residues that are not modelled. The numeric value for each fraction is indicated below the corresponding segment, with a dot representing fractions $\leq 5\%$. The upper red bar (where present) indicates the fraction of residues that have poor fit to the electron density. The numeric value is given above the bar.

Mol	Chain	Length	Quality of chain
1	A	333	<div> <div>3%</div> <div> <div></div> <div>85%</div> <div>10%</div> <div>..</div> </div> </div>

The following table lists non-polymeric compounds, carbohydrate monomers and non-standard residues in protein, DNA, RNA chains that are outliers for geometric or electron-density-fit criteria:

Mol	Type	Chain	Res	Chirality	Geometry	Clashes	Electron density
2	BXF	A	1001	X	-	-	-
2	BXF	A	1005	-	-	-	X

Continued on next page...

Continued from previous page...

Mol	Type	Chain	Res	Chirality	Geometry	Clashes	Electron density
2	XYP	A	1006	-	-	-	X
3	DNX	A	1004	-	-	X	X

2 Entry composition

There are 4 unique types of molecules in this entry. The entry contains 3278 atoms, of which 0 are hydrogens and 0 are deuteriums.

In the tables below, the ZeroOcc column contains the number of atoms modelled with zero occupancy, the AltConf column contains the number of residues with at least one atom in alternate conformation and the Trace column contains the number of residues modelled with at most 2 atoms.

- Molecule 1 is a protein called Beta-1,3-xylanase XYL4.

Mol	Chain	Residues	Atoms					ZeroOcc	AltConf	Trace
1	A	324	Total	C	N	O	S	2	30	0
			2700	1726	447	523	4			

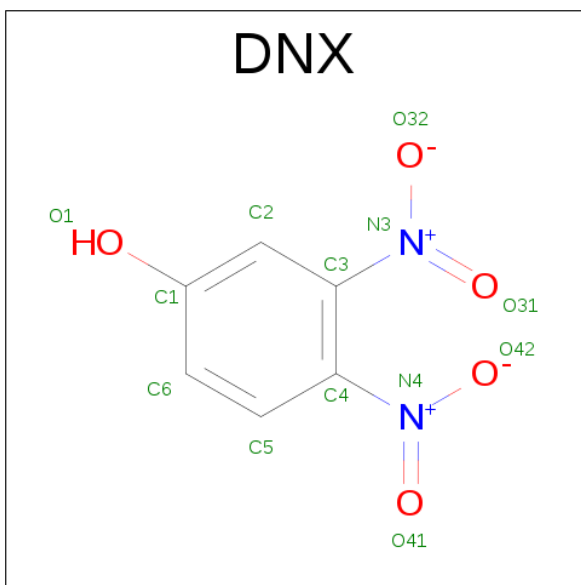
There are 6 discrepancies between the modelled and reference sequences:

Chain	Residue	Modelled	Actual	Comment	Reference
A	328	HIS	-	EXPRESSION TAG	UNP D5MP61
A	329	HIS	-	EXPRESSION TAG	UNP D5MP61
A	330	HIS	-	EXPRESSION TAG	UNP D5MP61
A	331	HIS	-	EXPRESSION TAG	UNP D5MP61
A	332	HIS	-	EXPRESSION TAG	UNP D5MP61
A	333	HIS	-	EXPRESSION TAG	UNP D5MP61

- Molecule 2 is a polymer of unknown type called SUGAR (3-MER).

Mol	Chain	Residues	Atoms				ZeroOcc	AltConf
2	A	3	Total	C	F	O	0	0
			27	15	1	11		
2	A	3	Total	C	F	O	0	0
			27	15	1	11		

- Molecule 3 is 3,4-DINITROPHENOL (three-letter code: DNX) (formula: C₆H₄N₂O₅).



Mol	Chain	Residues	Atoms				ZeroOcc	AltConf
3	A	1	Total	C	N	O	0	0
			13	6	2	5		

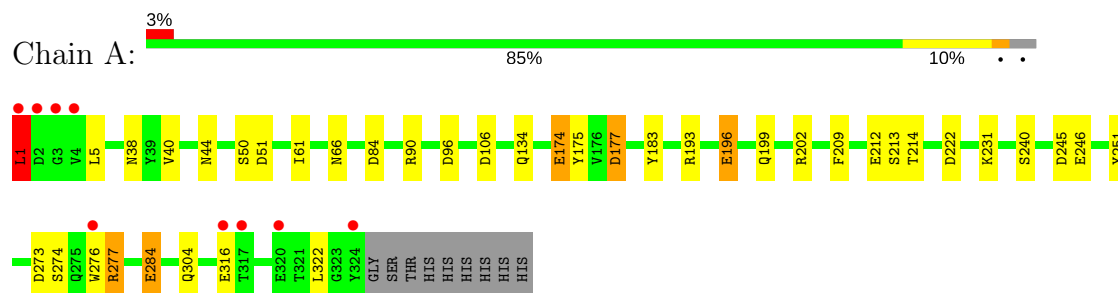
- Molecule 4 is water.

Mol	Chain	Residues	Atoms		ZeroOcc	AltConf
4	A	511	Total	O	0	0
			511	511		

3 Residue-property plots [i](#)

These plots are drawn for all protein, RNA and DNA chains in the entry. The first graphic for a chain summarises the proportions of the various outlier classes displayed in the second graphic. The second graphic shows the sequence view annotated by issues in geometry and electron density. Residues are color-coded according to the number of geometric quality criteria for which they contain at least one outlier: green = 0, yellow = 1, orange = 2 and red = 3 or more. A red dot above a residue indicates a poor fit to the electron density ($\text{RSRZ} > 2$). Stretches of 2 or more consecutive residues without any outlier are shown as a green connector. Residues present in the sample, but not in the model, are shown in grey.

- Molecule 1: Beta-1,3-xylanase XYL4



4 Data and refinement statistics

Property	Value	Source
Space group	P 21 21 21	Depositor
Cell constants a, b, c, α , β , γ	52.34Å 75.44Å 81.65Å 90.00° 90.00° 90.00°	Depositor
Resolution (Å)	29.61 – 1.20 28.65 – 1.20	Depositor EDS
% Data completeness (in resolution range)	96.9 (29.61-1.20) 96.9 (28.65-1.20)	Depositor EDS
R_{merge}	0.04	Depositor
R_{sym}	(Not available)	Depositor
$\langle I/\sigma(I) \rangle$ ¹	7.64 (at 1.20Å)	Xtriage
Refinement program	REFMAC 5.6.0117	Depositor
R, R_{free}	0.141 , 0.156 0.140 , 0.155	Depositor DCC
R_{free} test set	4931 reflections (5.27%)	DCC
Wilson B-factor (Å ²)	8.9	Xtriage
Anisotropy	0.013	Xtriage
Bulk solvent k_{sol} (e/Å ³), B_{sol} (Å ²)	0.41 , 42.8	EDS
L-test for twinning ²	$\langle L \rangle = 0.50$, $\langle L^2 \rangle = 0.33$	Xtriage
Estimated twinning fraction	No twinning to report.	Xtriage
F_o, F_c correlation	0.98	EDS
Total number of atoms	3278	wwPDB-VP
Average B, all atoms (Å ²)	12.0	wwPDB-VP

Xtriage's analysis on translational NCS is as follows: *The largest off-origin peak in the Patterson function is 6.16% of the height of the origin peak. No significant pseudotranslation is detected.*

¹Intensities estimated from amplitudes.

²Theoretical values of $\langle |L| \rangle$, $\langle L^2 \rangle$ for acentric reflections are 0.5, 0.333 respectively for untwinned datasets, and 0.375, 0.2 for perfectly twinned datasets.

5 Model quality [i](#)

5.1 Standard geometry [i](#)

Bond lengths and bond angles in the following residue types are not validated in this section: XYP, DNX, BXF

The Z score for a bond length (or angle) is the number of standard deviations the observed value is removed from the expected value. A bond length (or angle) with $|Z| > 5$ is considered an outlier worth inspection. RMSZ is the root-mean-square of all Z scores of the bond lengths (or angles).

Mol	Chain	Bond lengths		Bond angles	
		RMSZ	$\# Z > 5$	RMSZ	$\# Z > 5$
1	A	1.41	12/2866 (0.4%)	1.30	21/3918 (0.5%)

Chiral center outliers are detected by calculating the chiral volume of a chiral center and verifying if the center is modelled as a planar moiety or with the opposite hand. A planarity outlier is detected by checking planarity of atoms in a peptide group, atoms in a mainchain group or atoms of a sidechain that are expected to be planar.

Mol	Chain	#Chirality outliers	#Planarity outliers
1	A	0	1
2	A	1	0
All	All	1	1

All (12) bond length outliers are listed below:

Mol	Chain	Res	Type	Atoms	Z	Observed(Å)	Ideal(Å)
1	A	174	GLU	CD-OE2	8.86	1.35	1.25
1	A	276	TRP	CD2-CE2	7.96	1.50	1.41
1	A	212	GLU	CD-OE1	7.51	1.33	1.25
1	A	90	ARG	CD-NE	7.00	1.58	1.46
1	A	251	TYR	CE1-CZ	-6.89	1.29	1.38
1	A	273	ASP	C-O	6.15	1.35	1.23
1	A	276	TRP	CG-CD2	6.00	1.53	1.43
1	A	50	SER	CB-OG	-5.84	1.34	1.42
1	A	274	SER	CB-OG	5.24	1.49	1.42
1	A	246	GLU	CD-OE2	5.23	1.31	1.25
1	A	196[A]	GLU	CD-OE1	-5.17	1.20	1.25
1	A	196[B]	GLU	CD-OE1	-5.17	1.20	1.25

All (21) bond angle outliers are listed below:

Mol	Chain	Res	Type	Atoms	Z	Observed(°)	Ideal(°)
1	A	273	ASP	CB-CG-OD1	15.44	132.19	118.30
1	A	273	ASP	CB-CG-OD2	-11.61	107.86	118.30
1	A	202	ARG	NE-CZ-NH2	-9.17	115.71	120.30
1	A	51	ASP	CB-CG-OD1	8.17	125.65	118.30
1	A	245	ASP	CB-CG-OD1	7.93	125.44	118.30
1	A	1[A]	LEU	CA-CB-CG	7.79	133.22	115.30
1	A	1[B]	LEU	CA-CB-CG	7.79	133.22	115.30
1	A	96	ASP	CB-CG-OD1	7.45	125.00	118.30
1	A	277[A]	ARG	NE-CZ-NH2	-6.50	117.05	120.30
1	A	277[B]	ARG	NE-CZ-NH2	-6.50	117.05	120.30
1	A	84	ASP	CB-CG-OD2	-6.40	112.54	118.30
1	A	246	GLU	OE1-CD-OE2	-6.26	115.79	123.30
1	A	177	ASP	CB-CG-OD2	5.94	123.65	118.30
1	A	106	ASP	CB-CG-OD1	5.77	123.50	118.30
1	A	273	ASP	CB-CA-C	-5.69	99.02	110.40
1	A	84	ASP	CB-CG-OD1	5.61	123.35	118.30
1	A	273	ASP	O-C-N	-5.60	113.74	122.70
1	A	90	ARG	NE-CZ-NH1	5.60	123.10	120.30
1	A	284	GLU	OE1-CD-OE2	-5.57	116.62	123.30
1	A	174	GLU	OE1-CD-OE2	5.29	129.65	123.30
1	A	222	ASP	CB-CG-OD1	5.11	122.90	118.30

All (1) chirality outliers are listed below:

Mol	Chain	Res	Type	Atom
2	A	1001	BXF	C1

All (1) planarity outliers are listed below:

Mol	Chain	Res	Type	Group
1	A	1[A]	LEU	Peptide

5.2 Too-close contacts

In the following table, the Non-H and H(model) columns list the number of non-hydrogen atoms and hydrogen atoms in the chain respectively. The H(added) column lists the number of hydrogen atoms added and optimized by MolProbity. The Clashes column lists the number of clashes within the asymmetric unit, whereas Symm-Clashes lists symmetry related clashes.

Mol	Chain	Non-H	H(model)	H(added)	Clashes	Symm-Clashes
1	A	2700	0	2606	37	0
2	A	54	0	42	8	0

Continued on next page...

Continued from previous page...

Mol	Chain	Non-H	H(model)	H(added)	Clashes	Symm-Clashes
3	A	13	0	3	2	2
4	A	511	0	0	19	2
All	All	3278	0	2651	41	2

The all-atom clashscore is defined as the number of clashes found per 1000 atoms (including hydrogen atoms). The all-atom clashscore for this structure is 8.

All (41) close contacts within the same asymmetric unit are listed below, sorted by their clash magnitude.

Atom-1	Atom-2	Interatomic distance (Å)	Clash overlap (Å)
1:A:1[A]:LEU:HD11	4:A:1557:HOH:O	1.17	1.28
1:A:277[A]:ARG:NH2	2:A:1006:XYP:H2B	1.59	1.15
1:A:199[B]:GLN:OE1	4:A:1322:HOH:O	1.91	0.89
1:A:40[B]:VAL:CG2	1:A:61:ILE:HD12	2.03	0.88
1:A:1[A]:LEU:CD1	4:A:1164:HOH:O	2.22	0.87
1:A:134[A]:GLN:HG2	4:A:1289:HOH:O	1.76	0.85
1:A:277[A]:ARG:NH2	2:A:1006:XYP:C2B	2.41	0.84
1:A:134[B]:GLN:HG2	1:A:175:TYR:CD2	2.14	0.83
1:A:277[A]:ARG:HH21	2:A:1006:XYP:H2B	1.42	0.80
1:A:40[B]:VAL:CG2	1:A:61:ILE:CD1	2.62	0.78
1:A:40[B]:VAL:HG21	1:A:61:ILE:HD12	1.67	0.77
1:A:304[B]:GLN:HG3	4:A:1569:HOH:O	1.86	0.73
2:A:1005:BXF:H52	4:A:1559:HOH:O	1.89	0.72
1:A:277[A]:ARG:HH21	2:A:1006:XYP:C2B	2.00	0.72
1:A:316[B]:GLU:CD	1:A:316[B]:GLU:H	1.93	0.71
1:A:66[B]:ASN:OD1	4:A:1611:HOH:O	2.10	0.68
1:A:1[A]:LEU:HD13	4:A:1164:HOH:O	1.89	0.66
1:A:1[A]:LEU:HD12	1:A:177:ASP:CG	2.16	0.66
1:A:40[B]:VAL:HG23	1:A:61:ILE:HD11	1.78	0.66
1:A:231:LYS:HE2	4:A:1421:HOH:O	1.96	0.64
1:A:40[B]:VAL:HG23	1:A:61:ILE:CD1	2.26	0.64
1:A:240[B]:SER:OG	4:A:1411:HOH:O	1.99	0.64
1:A:66[B]:ASN:CG	4:A:1611:HOH:O	2.36	0.62
1:A:277[A]:ARG:HH22	2:A:1006:XYP:H2B	1.56	0.62
1:A:193[B]:ARG:NH2	1:A:196[B]:GLU:OE2	2.32	0.62
1:A:134[B]:GLN:HG2	1:A:175:TYR:CE2	2.37	0.60
1:A:40[B]:VAL:HG21	1:A:61:ILE:CD1	2.30	0.60
2:A:1005:BXF:H3	4:A:1559:HOH:O	2.02	0.59
1:A:1[A]:LEU:HD12	4:A:1164:HOH:O	1.94	0.58
1:A:277[A]:ARG:NH2	2:A:1005:BXF:O3	2.37	0.58
1:A:174:GLU:HG3	4:A:1385:HOH:O	2.06	0.56

Continued on next page...

Continued from previous page...

Atom-1	Atom-2	Interatomic distance (Å)	Clash overlap (Å)
1:A:277[A]:ARG:HG3	1:A:284:GLU:OE2	2.10	0.51
1:A:1[A]:LEU:CD1	4:A:1557:HOH:O	2.02	0.51
1:A:174:GLU:CG	4:A:1385:HOH:O	2.58	0.50
3:A:1004:DNX:O42	3:A:1004:DNX:O32	2.31	0.48
3:A:1004:DNX:N4	3:A:1004:DNX:O32	2.47	0.47
1:A:44:ASN:ND2	4:A:1373:HOH:O	2.38	0.46
1:A:183:TYR:O	1:A:213[A]:SER:HA	2.16	0.46
1:A:1[A]:LEU:CD2	4:A:1404:HOH:O	2.64	0.45
1:A:5:LEU:HA	1:A:322:LEU:O	2.16	0.45
1:A:231:LYS:CE	4:A:1421:HOH:O	2.63	0.40

All (2) symmetry-related close contacts are listed below. The label for Atom-2 includes the symmetry operator and encoded unit-cell translations to be applied.

Atom-1	Atom-2	Interatomic distance (Å)	Clash overlap (Å)
3:A:1004:DNX:O42	4:A:1604:HOH:O[4_445]	1.75	0.45
3:A:1004:DNX:O1	4:A:1451:HOH:O[4_445]	1.80	0.40

5.3 Torsion angles [i](#)

5.3.1 Protein backbone [i](#)

In the following table, the Percentiles column shows the percent Ramachandran outliers of the chain as a percentile score with respect to all X-ray entries followed by that with respect to entries of similar resolution.

The Analysed column shows the number of residues for which the backbone conformation was analysed, and the total number of residues.

Mol	Chain	Analysed	Favoured	Allowed	Outliers	Percentiles
1	A	354/333 (106%)	346 (98%)	8 (2%)	0	100 100

There are no Ramachandran outliers to report.

5.3.2 Protein sidechains [i](#)

In the following table, the Percentiles column shows the percent sidechain outliers of the chain as a percentile score with respect to all X-ray entries followed by that with respect to entries of similar resolution.

The Analysed column shows the number of residues for which the sidechain conformation was analysed, and the total number of residues.

Mol	Chain	Analysed	Rotameric	Outliers	Percentiles	
1	A	297/272 (109%)	294 (99%)	3 (1%)	80	48

All (3) residues with a non-rotameric sidechain are listed below:

Mol	Chain	Res	Type
1	A	38	ASN
1	A	209	PHE
1	A	214	THR

Some sidechains can be flipped to improve hydrogen bonding and reduce clashes. All (2) such sidechains are listed below:

Mol	Chain	Res	Type
1	A	23	ASN
1	A	303	GLN

5.3.3 RNA ⓘ

There are no RNA molecules in this entry.

5.4 Non-standard residues in protein, DNA, RNA chains ⓘ

There are no non-standard protein/DNA/RNA residues in this entry.

5.5 Carbohydrates ⓘ

6 carbohydrates are modelled in this entry.

In the following table, the Counts columns list the number of bonds (or angles) for which Mogul statistics could be retrieved, the number of bonds (or angles) that are observed in the model and the number of bonds (or angles) that are defined in the chemical component dictionary. The Link column lists molecule types, if any, to which the group is linked. The Z score for a bond length (or angle) is the number of standard deviations the observed value is removed from the expected value. A bond length (or angle) with $|Z| > 2$ is considered an outlier worth inspection. RMSZ is the root-mean-square of all Z scores of the bond lengths (or angles).

Mol	Type	Chain	Res	Link	Bond lengths			Bond angles		
					Counts	RMSZ	$\# Z > 2$	Counts	RMSZ	$\# Z > 2$
2	BXF	A	1001	1,2	9,9,10	1.23	1 (11%)	7,12,14	1.59	3 (42%)

Mol	Type	Chain	Res	Link	Bond lengths			Bond angles		
					Counts	RMSZ	# Z > 2	Counts	RMSZ	# Z > 2
2	XYP	A	1002	2	9,9,10	0.92	0	10,12,14	0.92	0
2	XYP	A	1003	2	9,9,10	0.86	0	10,12,14	0.90	0
2	BXF	A	1005	3,2	9,9,10	2.81	5 (55%)	7,12,14	5.03	5 (71%)
2	XYP	A	1006	2	9,9,10	2.21	2 (22%)	10,12,14	3.03	6 (60%)
2	XYP	A	1007	2	9,9,10	0.63	0	10,12,14	2.09	5 (50%)

In the following table, the Chirals column lists the number of chiral outliers, the number of chiral centers analysed, the number of these observed in the model and the number defined in the chemical component dictionary. Similar counts are reported in the Torsion and Rings columns. '-' means no outliers of that kind were identified.

Mol	Type	Chain	Res	Link	Chirals	Torsions	Rings
2	BXF	A	1001	1,2	1/1/3/4	0/0/14/17	0/1/1/1
2	XYP	A	1002	2	-	0/0/14/17	0/1/1/1
2	XYP	A	1003	2	-	0/0/14/17	0/1/1/1
2	BXF	A	1005	3,2	-	0/0/14/17	0/1/1/1
2	XYP	A	1006	2	-	0/0/14/17	0/1/1/1
2	XYP	A	1007	2	-	0/0/14/17	0/1/1/1

All (8) bond length outliers are listed below:

Mol	Chain	Res	Type	Atoms	Z	Observed(Å)	Ideal(Å)
2	A	1005	BXF	C1-C2	-5.54	1.44	1.52
2	A	1005	BXF	O5-C5	-4.12	1.34	1.42
2	A	1001	BXF	C4-C3	-3.14	1.48	1.52
2	A	1005	BXF	F-C2	-2.28	1.34	1.40
2	A	1005	BXF	C5-C4	-2.27	1.46	1.52
2	A	1005	BXF	C4-C3	2.53	1.55	1.52
2	A	1006	XYP	O5B-C1B	2.62	1.48	1.42
2	A	1006	XYP	O5B-C5B	5.30	1.53	1.42

All (19) bond angle outliers are listed below:

Mol	Chain	Res	Type	Atoms	Z	Observed(°)	Ideal(°)
2	A	1005	BXF	O4-C4-C5	-8.29	92.32	109.18
2	A	1006	XYP	C5B-O5B-C1B	-6.82	101.18	111.61
2	A	1006	XYP	O3B-C3B-C4B	-4.11	102.54	110.02
2	A	1007	XYP	O3B-C3B-C4B	-3.10	104.38	110.02
2	A	1006	XYP	O3B-C3B-C2B	-2.54	105.41	110.02
2	A	1007	XYP	O2B-C2B-C3B	-2.50	105.27	110.17
2	A	1007	XYP	C4B-C3B-C2B	-2.35	108.12	110.86

Continued on next page...

Continued from previous page...

Mol	Chain	Res	Type	Atoms	Z	Observed(°)	Ideal(°)
2	A	1006	XYP	C5B-C4B-C3B	-2.24	106.81	109.65
2	A	1005	BXF	O3-C3-C4	-2.13	106.16	110.02
2	A	1001	BXF	O4-C4-C5	-2.04	105.03	109.18
2	A	1001	BXF	C2-C3-C4	2.13	112.11	109.56
2	A	1006	XYP	C4B-C3B-C2B	2.14	113.35	110.86
2	A	1001	BXF	C5-O5-C1	2.15	114.89	111.61
2	A	1007	XYP	C1B-C2B-C3B	2.88	113.31	109.65
2	A	1006	XYP	O4B-C4B-C3B	3.00	116.07	110.17
2	A	1005	BXF	C2-C3-C4	3.03	113.18	109.56
2	A	1007	XYP	C5B-C4B-C3B	3.05	113.52	109.65
2	A	1005	BXF	C5-O5-C1	3.82	117.45	111.61
2	A	1005	BXF	O4-C4-C3	8.79	127.45	110.17

All (1) chirality outliers are listed below:

Mol	Chain	Res	Type	Atom
2	A	1001	BXF	C1

There are no torsion outliers.

There are no ring outliers.

2 monomers are involved in 8 short contacts:

Mol	Chain	Res	Type	Clashes	Symm-Clashes
2	A	1005	BXF	3	0
2	A	1006	XYP	5	0

5.6 Ligand geometry

1 ligand is modelled in this entry.

In the following table, the Counts columns list the number of bonds (or angles) for which Mogul statistics could be retrieved, the number of bonds (or angles) that are observed in the model and the number of bonds (or angles) that are defined in the chemical component dictionary. The Link column lists molecule types, if any, to which the group is linked. The Z score for a bond length (or angle) is the number of standard deviations the observed value is removed from the expected value. A bond length (or angle) with $|Z| > 2$ is considered an outlier worth inspection. RMSZ is the root-mean-square of all Z scores of the bond lengths (or angles).

Mol	Type	Chain	Res	Link	Bond lengths			Bond angles		
					Counts	RMSZ	# Z > 2	Counts	RMSZ	# Z > 2
3	DNX	A	1004	2	9,13,13	3.13	5 (55%)	9,18,18	4.37	7 (77%)

In the following table, the Chirals column lists the number of chiral outliers, the number of chiral centers analysed, the number of these observed in the model and the number defined in the chemical component dictionary. Similar counts are reported in the Torsion and Rings columns. '-' means no outliers of that kind were identified.

Mol	Type	Chain	Res	Link	Chirals	Torsions	Rings
3	DNX	A	1004	2	-	0/4/8/8	0/1/1/1

All (5) bond length outliers are listed below:

Mol	Chain	Res	Type	Atoms	Z	Observed(Å)	Ideal(Å)
3	A	1004	DNX	O31-N3	-5.78	1.12	1.22
3	A	1004	DNX	C5-C4	-3.97	1.31	1.39
3	A	1004	DNX	O41-N4	-3.33	1.16	1.22
3	A	1004	DNX	C6-C1	-3.07	1.32	1.38
3	A	1004	DNX	C4-C3	4.07	1.46	1.40

All (7) bond angle outliers are listed below:

Mol	Chain	Res	Type	Atoms	Z	Observed(°)	Ideal(°)
3	A	1004	DNX	C3-C2-C1	-5.50	114.51	118.47
3	A	1004	DNX	C6-C1-C2	-2.47	117.46	120.20
3	A	1004	DNX	C6-C5-C4	-2.31	115.15	119.04
3	A	1004	DNX	O1-C1-C2	2.25	125.70	119.82
3	A	1004	DNX	C2-C3-N3	3.22	119.55	115.82
3	A	1004	DNX	C2-C3-C4	4.93	124.15	118.68
3	A	1004	DNX	C5-C6-C1	9.29	130.42	119.88

There are no chirality outliers.

There are no torsion outliers.

There are no ring outliers.

1 monomer is involved in 4 short contacts:

Mol	Chain	Res	Type	Clashes	Symm-Clashes
3	A	1004	DNX	2	2

5.7 Other polymers

There are no such residues in this entry.

5.8 Polymer linkage issues

There are no chain breaks in this entry.

6 Fit of model and data [i](#)

6.1 Protein, DNA and RNA chains [i](#)

In the following table, the column labelled ‘#RSRZ > 2’ contains the number (and percentage) of RSRZ outliers, followed by percent RSRZ outliers for the chain as percentile scores relative to all X-ray entries and entries of similar resolution. The OWAB column contains the minimum, median, 95th percentile and maximum values of the occupancy-weighted average B-factor per residue. The column labelled ‘Q < 0.9’ lists the number of (and percentage) of residues with an average occupancy less than 0.9.

Mol	Chain	Analysed	<RSRZ>	#RSRZ>2	OWAB(Å ²)	Q<0.9
1	A	324/333 (97%)	0.01	9 (2%) 53 49	5, 9, 16, 46	1 (0%)

All (9) RSRZ outliers are listed below:

Mol	Chain	Res	Type	RSRZ
1	A	1[A]	LEU	6.4
1	A	2	ASP	5.6
1	A	4	VAL	4.8
1	A	276	TRP	3.5
1	A	324	TYR	3.3
1	A	316[A]	GLU	3.3
1	A	3	GLY	3.2
1	A	317	THR	2.6
1	A	320	GLU	2.4

6.2 Non-standard residues in protein, DNA, RNA chains [i](#)

There are no non-standard protein/DNA/RNA residues in this entry.

6.3 Carbohydrates [i](#)

In the following table, the Atoms column lists the number of modelled atoms in the group and the number defined in the chemical component dictionary. LLDF column lists the quality of electron density of the group with respect to its neighbouring residues in protein, DNA or RNA chains. The B-factors column lists the minimum, median, 95th percentile and maximum values of B factors of atoms in the group. The column labelled ‘Q < 0.9’ lists the number of atoms with occupancy less than 0.9.

Mol	Type	Chain	Res	Atoms	RSCC	RSR	LLDF	B-factors(Å ²)	Q<0.9
2	XYP	A	1006	9/10	0.82	0.22	31.48	9,10,12,15	9

Continued on next page...

Continued from previous page...

Mol	Type	Chain	Res	Atoms	RSCC	RSR	LLDF	B-factors(\AA^2)	Q<0.9
2	BXF	A	1005	9/10	0.84	0.22	19.56	7,8,10,10	9
2	BXF	A	1001	9/10	0.99	0.08	-0.27	5,5,6,6	0
2	XYP	A	1002	9/10	0.99	0.06	-0.63	5,5,6,6	0
2	XYP	A	1003	9/10	0.99	0.05	-1.51	5,6,8,8	0
2	XYP	A	1007	9/10	0.90	0.15	-	10,12,13,15	9

6.4 Ligands [i](#)

In the following table, the Atoms column lists the number of modelled atoms in the group and the number defined in the chemical component dictionary. LLDF column lists the quality of electron density of the group with respect to its neighbouring residues in protein, DNA or RNA chains. The B-factors column lists the minimum, median, 95th percentile and maximum values of B factors of atoms in the group. The column labelled 'Q< 0.9' lists the number of atoms with occupancy less than 0.9.

Mol	Type	Chain	Res	Atoms	RSCC	RSR	LLDF	B-factors(\AA^2)	Q<0.9
3	DNX	A	1004	13/13	0.85	0.22	16.64	7,10,14,18	13

6.5 Other polymers [i](#)

There are no such residues in this entry.