



Full wwPDB X-ray Structure Validation Report ⓘ

Feb 13, 2017 – 01:11 am GMT

PDB ID : 3VQU
Title : CRYSTAL STRUCTURE OF HUMAN MPS1 CATALYTIC DOMAIN IN COMPLEX WITH 4-[(4-amino-5-cyano-6-ethoxypyridin-2-yl)amino]benzamide
Authors : Kusakabe, K.; Ide, N.; Daigo, Y.; Itoh, T.; Higashino, K.; Okano, Y.; Tadano, G.; Tachibana, Y.; Sato, Y.; Inoue, M.; Wada, T.; Iguchi, M.; Kanazawa, T.; Ishioka, Y.; Dohi, K.; Tagashira, S.; Kido, Y.; Sakamoto, S.; Yasuo, K.; Maeda, M.; Yamamoto, T.; Higaki, M.; Endoh, T.; Ueda, K.; Shiota, T.; Murai, H.; Nakamura, Y.
Deposited on : 2012-03-30
Resolution : 2.40 Å(reported)

This is a Full wwPDB X-ray Structure Validation Report for a publicly released PDB entry.

We welcome your comments at validation@mail.wwpdb.org

A user guide is available at

<http://wwpdb.org/validation/2016/XrayValidationReportHelp>

with specific help available everywhere you see the ⓘ symbol.

The following versions of software and data (see [references ⓘ](#)) were used in the production of this report:

MolProbity	:	4.02b-467
Mogul	:	1.7.2 (RC1), CSD as538be (2017)
Xtriage (Phenix)	:	1.9-1692
EDS	:	trunk28620
Percentile statistics	:	20161228.v01 (using entries in the PDB archive December 28th 2016)
Refmac	:	5.8.0135
CCP4	:	6.5.0
Ideal geometry (proteins)	:	Engh & Huber (2001)
Ideal geometry (DNA, RNA)	:	Parkinson et al. (1996)
Validation Pipeline (wwPDB-VP)	:	recalc28949

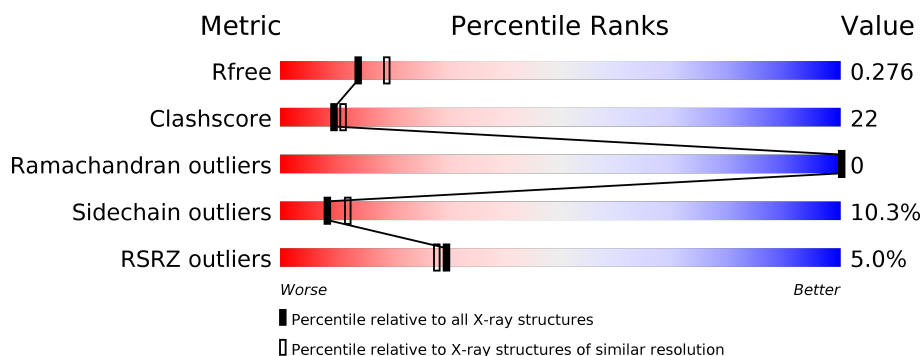
1 Overall quality at a glance

The following experimental techniques were used to determine the structure:

X-RAY DIFFRACTION

The reported resolution of this entry is 2.40 Å.

Percentile scores (ranging between 0-100) for global validation metrics of the entry are shown in the following graphic. The table shows the number of entries on which the scores are based.



Metric	Whole archive (#Entries)	Similar resolution (#Entries, resolution range(Å))
R_{free}	100719	3166 (2.40-2.40)
Clashscore	112137	3674 (2.40-2.40)
Ramachandran outliers	110173	3616 (2.40-2.40)
Sidechain outliers	110143	3617 (2.40-2.40)
RSRZ outliers	101464	3195 (2.40-2.40)

The table below summarises the geometric issues observed across the polymeric chains and their fit to the electron density. The red, orange, yellow and green segments on the lower bar indicate the fraction of residues that contain outliers for ≥ 3 , 2, 1 and 0 types of geometric quality criteria. A grey segment represents the fraction of residues that are not modelled. The numeric value for each fraction is indicated below the corresponding segment, with a dot representing fractions $\leq 5\%$. The upper red bar (where present) indicates the fraction of residues that have poor fit to the electron density. The numeric value is given above the bar.

Mol	Chain	Length	Quality of chain
1	A	320	<div> <div>4%</div> <div>53%</div> <div>23%</div> <div>5%</div> <div>19%</div> </div>

The following table lists non-polymeric compounds, carbohydrate monomers and non-standard residues in protein, DNA, RNA chains that are outliers for geometric or electron-density-fit criteria:

Mol	Type	Chain	Res	Chirality	Geometry	Clashes	Electron density
2	IOD	A	907	-	-	X	-

2 Entry composition

There are 4 unique types of molecules in this entry. The entry contains 2085 atoms, of which 0 are hydrogens and 0 are deuteriums.

In the tables below, the ZeroOcc column contains the number of atoms modelled with zero occupancy, the AltConf column contains the number of residues with at least one atom in alternate conformation and the Trace column contains the number of residues modelled with at most 2 atoms.

- Molecule 1 is a protein called Dual specificity protein kinase TTK.

Mol	Chain	Residues	Atoms					ZeroOcc	AltConf	Trace
1	A	258	Total	C	N	O	S	0	0	0
			2029	1309	333	374	13			

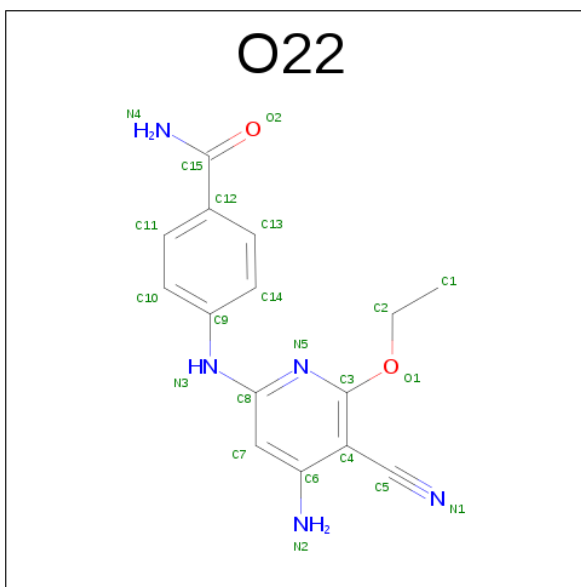
There are 15 discrepancies between the modelled and reference sequences:

Chain	Residue	Modelled	Actual	Comment	Reference
A	821	LEU	-	EXPRESSION TAG	UNP P33981
A	822	VAL	-	EXPRESSION TAG	UNP P33981
A	823	PRO	-	EXPRESSION TAG	UNP P33981
A	824	ARG	-	EXPRESSION TAG	UNP P33981
A	825	GLY	-	EXPRESSION TAG	UNP P33981
A	826	SER	-	EXPRESSION TAG	UNP P33981
A	827	ALA	-	EXPRESSION TAG	UNP P33981
A	828	ALA	-	EXPRESSION TAG	UNP P33981
A	829	GLY	-	EXPRESSION TAG	UNP P33981
A	830	HIS	-	EXPRESSION TAG	UNP P33981
A	831	HIS	-	EXPRESSION TAG	UNP P33981
A	832	HIS	-	EXPRESSION TAG	UNP P33981
A	833	HIS	-	EXPRESSION TAG	UNP P33981
A	834	HIS	-	EXPRESSION TAG	UNP P33981
A	835	HIS	-	EXPRESSION TAG	UNP P33981

- Molecule 2 is IODIDE ION (three-letter code: IOD) (formula: I).

Mol	Chain	Residues	Atoms		ZeroOcc	AltConf
2	A	8	Total	I	0	0
			8	8		

- Molecule 3 is 4-[(4-AMINO-5-CYANO-6-ETHOXYPYRIDIN-2-YL)AMINO]BENZAMIDE (three-letter code: O22) (formula: C₁₅H₁₅N₅O₂).



Mol	Chain	Residues	Atoms				ZeroOcc	AltConf
3	A	1	Total	C	N	O	0	0
			22	15	5	2		

- Molecule 4 is water.

Mol	Chain	Residues	Atoms		ZeroOcc	AltConf
4	A	26	Total	O	0	0
			26	26		

4 Data and refinement statistics

Property	Value	Source
Space group	I 2 2 2	Depositor
Cell constants a, b, c, α , β , γ	71.47 Å 106.07 Å 112.08 Å 90.00° 90.00° 90.00°	Depositor
Resolution (Å)	20.00 – 2.40 35.73 – 2.40	Depositor EDS
% Data completeness (in resolution range)	100.0 (20.00-2.40) 100.0 (35.73-2.40)	Depositor EDS
R_{merge}	(Not available)	Depositor
R_{sym}	0.07	Depositor
$\langle I/\sigma(I) \rangle$ ¹	2.26 (at 2.39 Å)	Xtriage
Refinement program	REFMAC 5.5.0102	Depositor
R, R_{free}	0.247 , 0.284 0.245 , 0.276	Depositor DCC
R_{free} test set	1720 reflections (11.24%)	DCC
Wilson B-factor (Å ²)	49.3	Xtriage
Anisotropy	0.432	Xtriage
Bulk solvent k_{sol} (e/Å ³), B_{sol} (Å ²)	0.35 , 44.7	EDS
L-test for twinning ²	$\langle L \rangle = 0.50$, $\langle L^2 \rangle = 0.33$	Xtriage
Estimated twinning fraction	No twinning to report.	Xtriage
F_o, F_c correlation	0.93	EDS
Total number of atoms	2085	wwPDB-VP
Average B, all atoms (Å ²)	51.0	wwPDB-VP

Xtriage's analysis on translational NCS is as follows: *The largest off-origin peak in the Patterson function is 8.41% of the height of the origin peak. No significant pseudotranslation is detected.*

¹Intensities estimated from amplitudes.

²Theoretical values of $\langle |L| \rangle$, $\langle L^2 \rangle$ for acentric reflections are 0.5, 0.333 respectively for untwinned datasets, and 0.375, 0.2 for perfectly twinned datasets.

5 Model quality [i](#)

5.1 Standard geometry [i](#)

Bond lengths and bond angles in the following residue types are not validated in this section: IOD, O22

The Z score for a bond length (or angle) is the number of standard deviations the observed value is removed from the expected value. A bond length (or angle) with $|Z| > 5$ is considered an outlier worth inspection. RMSZ is the root-mean-square of all Z scores of the bond lengths (or angles).

Mol	Chain	Bond lengths		Bond angles	
		RMSZ	$\# Z > 5$	RMSZ	$\# Z > 5$
1	A	0.54	1/2072 (0.0%)	0.53	1/2809 (0.0%)

All (1) bond length outliers are listed below:

Mol	Chain	Res	Type	Atoms	Z	Observed(Å)	Ideal(Å)
1	A	646	SER	C-N	-5.04	1.22	1.34

All (1) bond angle outliers are listed below:

Mol	Chain	Res	Type	Atoms	Z	Observed(°)	Ideal(°)
1	A	647	ASP	O-C-N	-5.75	113.49	122.70

There are no chirality outliers.

There are no planarity outliers.

5.2 Too-close contacts [i](#)

In the following table, the Non-H and H(model) columns list the number of non-hydrogen atoms and hydrogen atoms in the chain respectively. The H(added) column lists the number of hydrogen atoms added and optimized by MolProbity. The Clashes column lists the number of clashes within the asymmetric unit, whereas Symm-Clashes lists symmetry related clashes.

Mol	Chain	Non-H	H(model)	H(added)	Clashes	Symm-Clashes
1	A	2029	0	1959	84	0
2	A	8	0	0	3	0
3	A	22	0	15	3	0
4	A	26	0	0	2	0
All	All	2085	0	1974	87	0

The all-atom clashscore is defined as the number of clashes found per 1000 atoms (including hydrogen atoms). The all-atom clashscore for this structure is 22.

All (87) close contacts within the same asymmetric unit are listed below, sorted by their clash magnitude.

Atom-1	Atom-2	Interatomic distance (Å)	Clash overlap (Å)
1:A:736:GLN:H	1:A:736:GLN:NE2	1.37	1.22
1:A:605:GLY:HA2	1:A:656:VAL:HG13	1.25	1.19
1:A:736:GLN:N	1:A:736:GLN:HE21	1.58	1.02
1:A:579:GLN:HE22	1:A:587:ARG:HA	1.29	0.96
1:A:647:ASP:OD1	1:A:649:LYS:HE2	1.74	0.87
1:A:736:GLN:H	1:A:736:GLN:HE21	0.86	0.84
1:A:736:GLN:N	1:A:736:GLN:NE2	2.22	0.80
1:A:565:LEU:HD12	1:A:565:LEU:O	1.84	0.76
3:A:909:O22:H4	3:A:909:O22:N5	2.00	0.76
1:A:794:GLN:H	1:A:794:GLN:CD	1.89	0.75
1:A:649:LYS:H	1:A:652:ASN:HD22	1.31	0.75
2:A:907:IOD:I	4:A:1102:HOH:O	2.80	0.69
1:A:666:GLY:HA2	1:A:670:GLN:NE2	2.08	0.68
1:A:553:LYS:HD3	1:A:600:MET:CE	2.25	0.65
1:A:628:TRP:HA	1:A:631:MET:HE2	1.77	0.65
1:A:609:LEU:HD11	1:A:727:MET:CE	2.26	0.65
1:A:697:ASP:O	1:A:697:ASP:CG	2.36	0.64
1:A:620:ASP:OD1	1:A:621:PRO:HD2	2.00	0.61
1:A:607:ILE:HG13	3:A:909:O22:N4	2.16	0.61
1:A:578:LEU:HD12	1:A:637:THR:HG22	1.82	0.61
1:A:630:ASN:HD22	1:A:660:LEU:H	1.47	0.60
1:A:609:LEU:HD11	1:A:727:MET:HE1	1.84	0.60
1:A:713:PRO:HB2	2:A:903:IOD:I	2.72	0.59
1:A:579:GLN:NE2	1:A:587:ARG:HA	2.10	0.59
1:A:605:GLY:HA2	1:A:656:VAL:CG1	2.16	0.58
1:A:518:ILE:HG22	1:A:519:SER:N	2.19	0.57
1:A:553:LYS:HD3	1:A:600:MET:HE3	1.86	0.57
1:A:628:TRP:HA	1:A:631:MET:CE	2.34	0.57
1:A:575:LEU:O	1:A:579:GLN:HG2	2.04	0.57
1:A:645:HIS:CG	1:A:648:LEU:HD13	2.39	0.57
1:A:578:LEU:CD1	1:A:637:THR:HG22	2.35	0.56
1:A:763:ASP:HB3	1:A:790:TYR:HB2	1.87	0.56
1:A:630:ASN:ND2	1:A:660:LEU:H	2.04	0.55
1:A:521:LYS:HG3	1:A:590:ASP:OD2	2.07	0.54
1:A:553:LYS:HD3	1:A:600:MET:HE1	1.90	0.54
1:A:666:GLY:HA2	1:A:670:GLN:HE21	1.73	0.54
1:A:647:ASP:O	1:A:649:LYS:HE3	2.07	0.54

Continued on next page...

Continued from previous page...

Atom-1	Atom-2	Interatomic distance (Å)	Clash overlap (Å)
1:A:520:VAL:HG13	1:A:592:GLU:HB2	1.89	0.53
1:A:528:LEU:HD13	1:A:543:LEU:HG	1.89	0.53
1:A:565:LEU:C	1:A:565:LEU:HD12	2.25	0.53
1:A:586:ILE:HD11	1:A:654:LEU:HD23	1.89	0.52
3:A:909:O22:C10	3:A:909:O22:N5	2.64	0.52
1:A:605:GLY:N	2:A:907:IOD:I	3.12	0.51
1:A:607:ILE:HD11	1:A:611:SER:HB2	1.91	0.51
1:A:555:VAL:HB	1:A:598:ILE:HB	1.94	0.50
1:A:731:LYS:NZ	1:A:736:GLN:HE22	2.09	0.50
1:A:528:LEU:O	1:A:529:LYS:HB3	2.12	0.50
1:A:737:ILE:O	1:A:743:LYS:HE2	2.12	0.49
1:A:764:LEU:O	1:A:768:LEU:HD22	2.13	0.49
1:A:584:LYS:HG3	1:A:633:GLU:CD	2.33	0.48
1:A:585:ILE:HD13	1:A:662:LEU:HB3	1.95	0.48
1:A:697:ASP:O	1:A:697:ASP:OD2	2.31	0.48
1:A:564:THR:HG22	1:A:564:THR:O	2.13	0.48
1:A:518:ILE:CG2	1:A:519:SER:N	2.77	0.48
1:A:539:VAL:HG23	1:A:671:MET:CE	2.45	0.47
1:A:579:GLN:CD	1:A:588:LEU:H	2.18	0.47
1:A:579:GLN:NE2	1:A:588:LEU:H	2.12	0.46
1:A:725:TYR:HD2	1:A:731:LYS:O	1.98	0.46
1:A:607:ILE:HD11	1:A:611:SER:CB	2.46	0.45
1:A:647:ASP:OD1	1:A:649:LYS:CE	2.56	0.45
1:A:528:LEU:HD11	1:A:543:LEU:CD1	2.47	0.44
1:A:574:TYR:CD1	1:A:643:ILE:HD11	2.52	0.44
1:A:649:LYS:N	1:A:652:ASN:HD22	2.07	0.44
1:A:545:GLU:H	1:A:545:GLU:CD	2.21	0.44
1:A:528:LEU:HB2	1:A:541:GLN:O	2.17	0.44
1:A:723:ILE:O	1:A:727:MET:HG3	2.17	0.44
1:A:695:ILE:O	1:A:698:MET:HB2	2.18	0.44
1:A:725:TYR:CD2	1:A:731:LYS:O	2.71	0.44
1:A:731:LYS:NZ	1:A:736:GLN:NE2	2.65	0.44
1:A:639:HIS:CE1	1:A:713:PRO:HB3	2.53	0.43
1:A:625:LYS:O	1:A:629:LYS:HG3	2.19	0.43
1:A:671:MET:HB3	1:A:671:MET:HE3	1.64	0.43
1:A:726:TYR:CD1	1:A:731:LYS:HA	2.55	0.42
1:A:605:GLY:HA3	1:A:654:LEU:HD21	2.01	0.42
1:A:579:GLN:HE22	1:A:587:ARG:CA	2.14	0.41
1:A:607:ILE:HG12	1:A:608:ASP:N	2.35	0.41
1:A:584:LYS:O	1:A:661:LYS:HA	2.20	0.41
1:A:552:ILE:HA	1:A:600:MET:O	2.21	0.41

Continued on next page...

Continued from previous page...

Atom-1	Atom-2	Interatomic distance (Å)	Clash overlap (Å)
1:A:764:LEU:HD22	1:A:768:LEU:CD2	2.51	0.41
1:A:537:SER:HA	1:A:554:TYR:O	2.20	0.41
1:A:648:LEU:C	1:A:649:LYS:HG3	2.42	0.40
1:A:690:MET:HE1	1:A:695:ILE:HG12	2.03	0.40
1:A:764:LEU:HG	1:A:790:TYR:CE1	2.56	0.40
1:A:661:LYS:HD3	4:A:1122:HOH:O	2.21	0.40
1:A:739:ASN:HB3	1:A:742:SER:HB2	2.02	0.40
1:A:575:LEU:HD21	1:A:602:MET:CE	2.51	0.40
1:A:612:TRP:CZ3	1:A:613:LEU:HD23	2.56	0.40

There are no symmetry-related clashes.

5.3 Torsion angles [i](#)

5.3.1 Protein backbone [i](#)

In the following table, the Percentiles column shows the percent Ramachandran outliers of the chain as a percentile score with respect to all X-ray entries followed by that with respect to entries of similar resolution.

The Analysed column shows the number of residues for which the backbone conformation was analysed, and the total number of residues.

Mol	Chain	Analysed	Favoured	Allowed	Outliers	Percentiles	
1	A	250/320 (78%)	241 (96%)	9 (4%)	0	100	100

There are no Ramachandran outliers to report.

5.3.2 Protein sidechains [i](#)

In the following table, the Percentiles column shows the percent sidechain outliers of the chain as a percentile score with respect to all X-ray entries followed by that with respect to entries of similar resolution.

The Analysed column shows the number of residues for which the sidechain conformation was analysed, and the total number of residues.

Mol	Chain	Analysed	Rotameric	Outliers	Percentiles	
1	A	213/291 (73%)	191 (90%)	22 (10%)	8	12

All (22) residues with a non-rotameric sidechain are listed below:

Mol	Chain	Res	Type
1	A	526	SER
1	A	565	LEU
1	A	566	ASP
1	A	587	ARG
1	A	602	MET
1	A	607	ILE
1	A	619	ILE
1	A	632	LEU
1	A	646	SER
1	A	648	LEU
1	A	649	LYS
1	A	656	VAL
1	A	659	MET
1	A	671	MET
1	A	697	ASP
1	A	698	MET
1	A	731	LYS
1	A	736	GLN
1	A	744	LEU
1	A	764	LEU
1	A	768	LEU
1	A	794	GLN

Some sidechains can be flipped to improve hydrogen bonding and reduce clashes. All (5) such sidechains are listed below:

Mol	Chain	Res	Type
1	A	570	ASN
1	A	630	ASN
1	A	641	HIS
1	A	652	ASN
1	A	736	GLN

5.3.3 RNA ⓘ

There are no RNA molecules in this entry.

5.4 Non-standard residues in protein, DNA, RNA chains ⓘ

There are no non-standard protein/DNA/RNA residues in this entry.

5.5 Carbohydrates [i](#)

There are no carbohydrates in this entry.

5.6 Ligand geometry [i](#)

Of 9 ligands modelled in this entry, 8 are monoatomic - leaving 1 for Mogul analysis.

In the following table, the Counts columns list the number of bonds (or angles) for which Mogul statistics could be retrieved, the number of bonds (or angles) that are observed in the model and the number of bonds (or angles) that are defined in the chemical component dictionary. The Link column lists molecule types, if any, to which the group is linked. The Z score for a bond length (or angle) is the number of standard deviations the observed value is removed from the expected value. A bond length (or angle) with $|Z| > 2$ is considered an outlier worth inspection. RMSZ is the root-mean-square of all Z scores of the bond lengths (or angles).

Mol	Type	Chain	Res	Link	Bond lengths			Bond angles		
					Counts	RMSZ	$\# Z > 2$	Counts	RMSZ	$\# Z > 2$
3	O22	A	909	-	22,23,23	2.89	6 (27%)	27,31,31	1.99	7 (25%)

In the following table, the Chirals column lists the number of chiral outliers, the number of chiral centers analysed, the number of these observed in the model and the number defined in the chemical component dictionary. Similar counts are reported in the Torsion and Rings columns. '-' means no outliers of that kind were identified.

Mol	Type	Chain	Res	Link	Chirals	Torsions	Rings
3	O22	A	909	-	-	0/12/13/13	0/2/2/2

All (6) bond length outliers are listed below:

Mol	Chain	Res	Type	Atoms	Z	Observed(Å)	Ideal(Å)
3	A	909	O22	C4-C5	-10.09	1.28	1.44
3	A	909	O22	C9-N3	-3.55	1.33	1.40
3	A	909	O22	C8-N3	-3.02	1.33	1.38
3	A	909	O22	C7-C6	-2.78	1.36	1.40
3	A	909	O22	O2-C15	-2.06	1.19	1.24
3	A	909	O22	C4-C3	5.04	1.47	1.41

All (7) bond angle outliers are listed below:

Mol	Chain	Res	Type	Atoms	Z	Observed(°)	Ideal(°)
3	A	909	O22	C6-C4-C3	-4.06	115.03	118.81
3	A	909	O22	O1-C3-N5	-3.31	115.68	119.99
3	A	909	O22	C4-C3-N5	-3.13	121.17	124.01

Continued on next page...

Continued from previous page...

Mol	Chain	Res	Type	Atoms	Z	Observed(°)	Ideal(°)
3	A	909	O22	C2-O1-C3	-2.92	114.62	117.59
3	A	909	O22	C12-C15-N4	2.53	120.67	117.77
3	A	909	O22	C3-C4-C5	4.35	124.72	119.28
3	A	909	O22	O1-C3-C4	4.71	123.15	115.86

There are no chirality outliers.

There are no torsion outliers.

There are no ring outliers.

1 monomer is involved in 3 short contacts:

Mol	Chain	Res	Type	Clashes	Symm-Clashes
3	A	909	O22	3	0

5.7 Other polymers [i](#)

There are no such residues in this entry.

5.8 Polymer linkage issues [i](#)

There are no chain breaks in this entry.

6 Fit of model and data [i](#)

6.1 Protein, DNA and RNA chains [i](#)

In the following table, the column labelled ‘#RSRZ> 2’ contains the number (and percentage) of RSRZ outliers, followed by percent RSRZ outliers for the chain as percentile scores relative to all X-ray entries and entries of similar resolution. The OWAB column contains the minimum, median, 95th percentile and maximum values of the occupancy-weighted average B-factor per residue. The column labelled ‘Q< 0.9’ lists the number of (and percentage) of residues with an average occupancy less than 0.9.

Mol	Chain	Analysed	<RSRZ>	#RSRZ>2	OWAB(Å ²)	Q<0.9
1	A	258/320 (80%)	0.30	13 (5%) 30 28	31, 51, 74, 84	0

All (13) RSRZ outliers are listed below:

Mol	Chain	Res	Type	RSRZ
1	A	795	THR	6.6
1	A	535	GLY	4.0
1	A	674	ASP	3.8
1	A	699	SER	3.4
1	A	522	GLY	3.2
1	A	618	SER	3.1
1	A	673	PRO	3.0
1	A	615	LYS	2.7
1	A	617	LYS	2.5
1	A	620	ASP	2.2
1	A	711	ILE	2.2
1	A	751	ASN	2.2
1	A	685	GLY	2.2

6.2 Non-standard residues in protein, DNA, RNA chains [i](#)

There are no non-standard protein/DNA/RNA residues in this entry.

6.3 Carbohydrates [i](#)

There are no carbohydrates in this entry.

6.4 Ligands

In the following table, the Atoms column lists the number of modelled atoms in the group and the number defined in the chemical component dictionary. LLDF column lists the quality of electron density of the group with respect to its neighbouring residues in protein, DNA or RNA chains. The B-factors column lists the minimum, median, 95th percentile and maximum values of B factors of atoms in the group. The column labelled 'Q< 0.9' lists the number of atoms with occupancy less than 0.9.

Mol	Type	Chain	Res	Atoms	RSCC	RSR	LLDF	B-factors(Å ²)	Q<0.9
3	O22	A	909	22/22	0.93	0.15	-0.85	39,48,56,60	0
2	IOD	A	907	1/1	0.94	0.11	-1.32	79,79,79,79	1
2	IOD	A	901	1/1	0.94	0.10	-2.06	78,78,78,78	1
2	IOD	A	903	1/1	0.96	0.10	-2.75	41,41,41,41	0
2	IOD	A	902	1/1	0.98	0.04	-3.37	65,65,65,65	1
2	IOD	A	905	1/1	0.95	0.04	-	72,72,72,72	1
2	IOD	A	904	1/1	0.95	0.07	-	72,72,72,72	1
2	IOD	A	908	1/1	0.89	0.13	-	93,93,93,93	1
2	IOD	A	906	1/1	0.94	0.07	-	72,72,72,72	1

6.5 Other polymers

There are no such residues in this entry.