



Full wwPDB X-ray Structure Validation Report ⓘ

Sep 11, 2017 – 07:13 PM EDT

PDB ID : 5VQW
Title : Crystal Structure of HIV-1 Reverse Transcriptase (Y181C) Variant in Complex with N-(6-cyano-3-(2-(2-(2,4-dioxo-3,4-dihydropyrimidin-1(2H)-yl)ethoxy)phenoxy)-4-methylnaphthalen-1-yl)acrylamide (JLJ685), a Non-nucleoside Inhibitor
Authors : Chan, A.H.; Kudalkar, S.N.; Anderson, K.S.
Deposited on : unknown
Resolution : 2.50 Å(reported)

This is a Full wwPDB X-ray Structure Validation Report for a publicly released PDB entry.

We welcome your comments at validation@mail.wwpdb.org

A user guide is available at

<http://wwpdb.org/validation/2016/XrayValidationReportHelp>

with specific help available everywhere you see the ⓘ symbol.

The following versions of software and data (see [references ⓘ](#)) were used in the production of this report:

MolProbity	:	4.02b-467
Mogul	:	1.7.2 (RC1), CSD as538be (2017)
Xtriage (Phenix)	:	1.9-1692
EDS	:	rb-20029824
Percentile statistics	:	20161228.v01 (using entries in the PDB archive December 28th 2016)
Refmac	:	5.8.0135
CCP4	:	6.5.0
Ideal geometry (proteins)	:	Engh & Huber (2001)
Ideal geometry (DNA, RNA)	:	Parkinson et al. (1996)
Validation Pipeline (wwPDB-VP)	:	rb-20029824

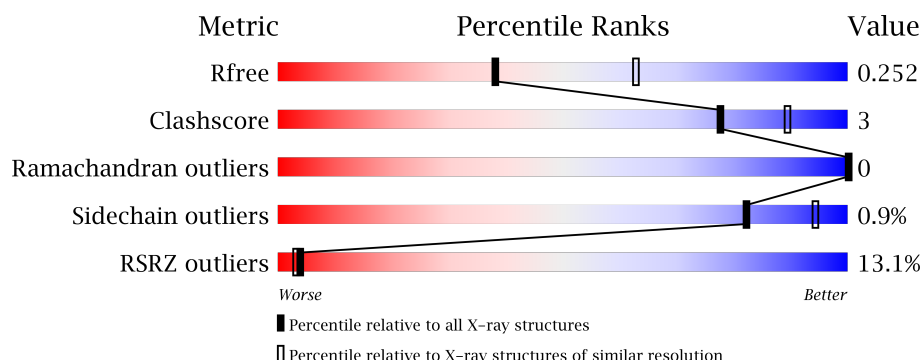
1 Overall quality at a glance

The following experimental techniques were used to determine the structure:

X-RAY DIFFRACTION

The reported resolution of this entry is 2.50 Å.

Percentile scores (ranging between 0-100) for global validation metrics of the entry are shown in the following graphic. The table shows the number of entries on which the scores are based.



Metric	Whole archive (#Entries)	Similar resolution (#Entries, resolution range(Å))
R_{free}	100719	3846 (2.50-2.50)
Clashscore	112137	4554 (2.50-2.50)
Ramachandran outliers	110173	4463 (2.50-2.50)
Sidechain outliers	110143	4465 (2.50-2.50)
RSRZ outliers	101464	3876 (2.50-2.50)

The table below summarises the geometric issues observed across the polymeric chains and their fit to the electron density. The red, orange, yellow and green segments on the lower bar indicate the fraction of residues that contain outliers for ≥ 3 , 2, 1 and 0 types of geometric quality criteria. A grey segment represents the fraction of residues that are not modelled. The numeric value for each fraction is indicated below the corresponding segment, with a dot representing fractions $\leq 5\%$. The upper red bar (where present) indicates the fraction of residues that have poor fit to the electron density. The numeric value is given above the bar.

Mol	Chain	Length	Quality of chain
1	A	557	<div> <div>13%</div> <div>88%</div> <div>11%</div> <div>.</div> </div>
2	B	428	<div> <div>12%</div> <div>84%</div> <div>10%</div> <div>6%</div> </div>

2 Entry composition

There are 5 unique types of molecules in this entry. The entry contains 7832 atoms, of which 0 are hydrogens and 0 are deuteriums.

In the tables below, the ZeroOcc column contains the number of atoms modelled with zero occupancy, the AltConf column contains the number of residues with at least one atom in alternate conformation and the Trace column contains the number of residues modelled with at most 2 atoms.

- Molecule 1 is a protein called Reverse transcriptase/ribonuclease H.

Mol	Chain	Residues	Atoms					ZeroOcc	AltConf	Trace
1	A	547	Total	C	N	O	S	0	0	0
			4411	2858	727	817	9			

There are 6 discrepancies between the modelled and reference sequences:

Chain	Residue	Modelled	Actual	Comment	Reference
A	-1	MET	-	expression tag	UNP P03366
A	0	VAL	-	expression tag	UNP P03366
A	172	ALA	LYS	engineered mutation	UNP P03366
A	173	ALA	LYS	engineered mutation	UNP P03366
A	181	CYS	TYR	engineered mutation	UNP P03366
A	280	SER	CYS	engineered mutation	UNP P03366

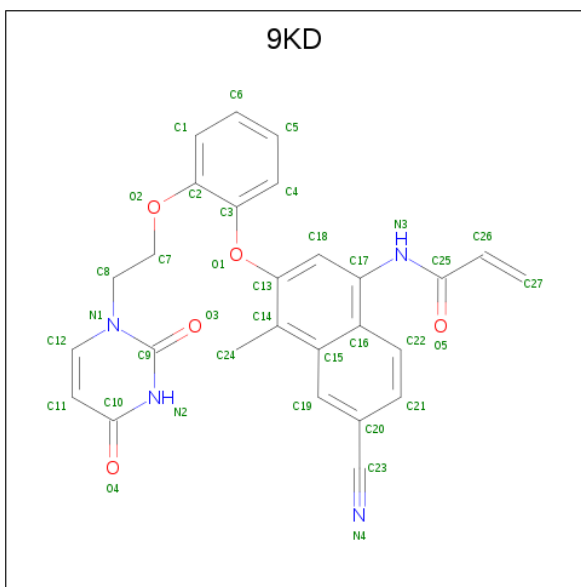
- Molecule 2 is a protein called p51 RT.

Mol	Chain	Residues	Atoms					ZeroOcc	AltConf	Trace
2	B	401	Total	C	N	O	S	0	0	0
			3319	2160	550	603	6			

There is a discrepancy between the modelled and reference sequences:

Chain	Residue	Modelled	Actual	Comment	Reference
B	280	SER	CYS	engineered mutation	UNP P03366

- Molecule 3 is N-(6-cyano-3-{2-[2-(2,4-dioxo-3,4-dihydropyrimidin-1(2H)-yl)ethoxy]phenoxy}-4-methylnaphthalen-1-yl)prop-2-enamide (three-letter code: 9KD) (formula: C₂₇H₂₂N₄O₅).



Mol	Chain	Residues	Atoms				ZeroOcc	AltConf
3	A	1	Total	C	N	O	0	0
			36	27	4	5		

- Molecule 4 is SULFATE ION (three-letter code: SO4) (formula: O₄S).



Mol	Chain	Residues	Atoms			ZeroOcc	AltConf
4	A	1	Total	O	S	0	0
			5	4	1		

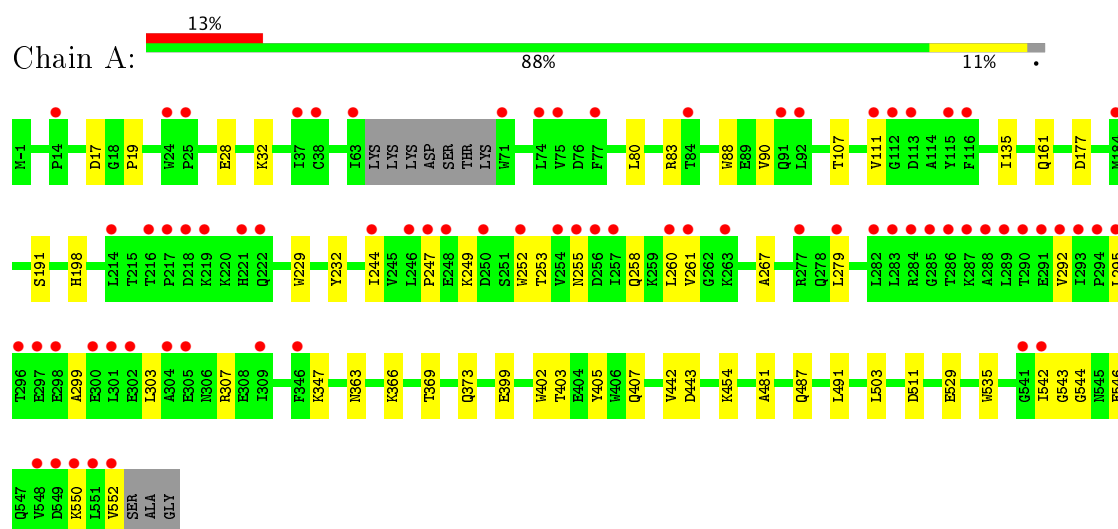
- Molecule 5 is water.

Mol	Chain	Residues	Atoms		ZeroOcc	AltConf
5	A	33	Total 33	O 33	0	0
5	B	28	Total 28	O 28	0	0

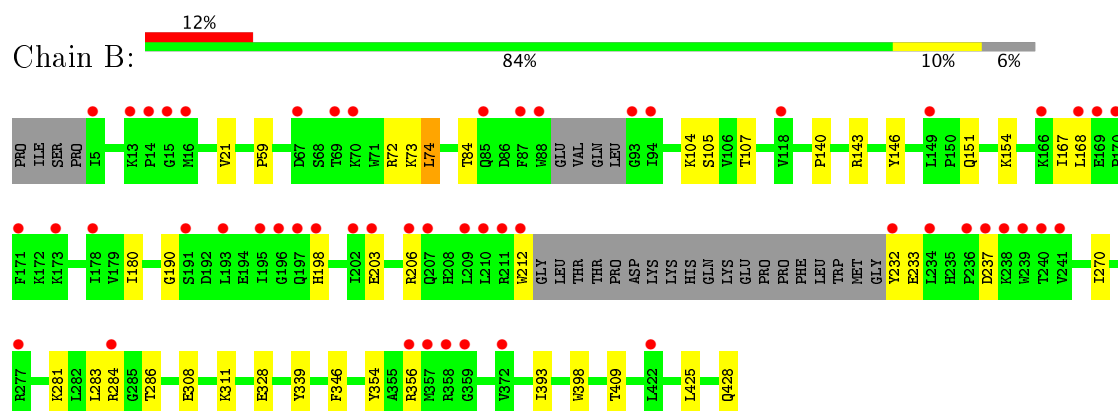
3 Residue-property plots [i](#)

These plots are drawn for all protein, RNA and DNA chains in the entry. The first graphic for a chain summarises the proportions of the various outlier classes displayed in the second graphic. The second graphic shows the sequence view annotated by issues in geometry and electron density. Residues are color-coded according to the number of geometric quality criteria for which they contain at least one outlier: green = 0, yellow = 1, orange = 2 and red = 3 or more. A red dot above a residue indicates a poor fit to the electron density ($RSRZ > 2$). Stretches of 2 or more consecutive residues without any outlier are shown as a green connector. Residues present in the sample, but not in the model, are shown in grey.

- Molecule 1: Reverse transcriptase/ribonuclease H



- Molecule 2: p51 RT



4 Data and refinement statistics

Property	Value	Source
Space group	C 1 2 1	Depositor
Cell constants a, b, c, α , β , γ	162.06 Å 73.82 Å 108.20 Å 90.00° 99.61° 90.00°	Depositor
Resolution (Å)	43.19 – 2.50 43.19 – 2.50	Depositor EDS
% Data completeness (in resolution range)	99.7 (43.19-2.50) 95.4 (43.19-2.50)	Depositor EDS
R_{merge}	0.04	Depositor
R_{sym}	(Not available)	Depositor
$\langle I/\sigma(I) \rangle$ ¹	2.80 (at 2.51 Å)	Xtriage
Refinement program	PHENIX 1.10.1 _2155	Depositor
R, R_{free}	0.233 , 0.257 0.229 , 0.252	Depositor DCC
R_{free} test set	1909 reflections (4.56%)	DCC
Wilson B-factor (Å ²)	56.2	Xtriage
Anisotropy	0.173	Xtriage
Bulk solvent k_{sol} (e/Å ³), B_{sol} (Å ²)	0.32 , 43.2	EDS
L-test for twinning ²	$\langle L \rangle = 0.49$, $\langle L^2 \rangle = 0.33$	Xtriage
Estimated twinning fraction	No twinning to report.	Xtriage
F_o, F_c correlation	0.93	EDS
Total number of atoms	7832	wwPDB-VP
Average B, all atoms (Å ²)	72.0	wwPDB-VP

Xtriage's analysis on translational NCS is as follows: *The largest off-origin peak in the Patterson function is 5.04% of the height of the origin peak. No significant pseudotranslation is detected.*

¹Intensities estimated from amplitudes.

²Theoretical values of $\langle |L| \rangle$, $\langle L^2 \rangle$ for acentric reflections are 0.5, 0.333 respectively for untwinned datasets, and 0.375, 0.2 for perfectly twinned datasets.

5 Model quality [i](#)

5.1 Standard geometry [i](#)

Bond lengths and bond angles in the following residue types are not validated in this section: SO4, 9KD

The Z score for a bond length (or angle) is the number of standard deviations the observed value is removed from the expected value. A bond length (or angle) with $|Z| > 5$ is considered an outlier worth inspection. RMSZ is the root-mean-square of all Z scores of the bond lengths (or angles).

Mol	Chain	Bond lengths		Bond angles	
		RMSZ	$\# Z > 5$	RMSZ	$\# Z > 5$
1	A	0.24	0/4527	0.42	0/6163
2	B	0.24	0/3413	0.42	0/4635
All	All	0.24	0/7940	0.42	0/10798

There are no bond length outliers.

There are no bond angle outliers.

There are no chirality outliers.

There are no planarity outliers.

5.2 Too-close contacts [i](#)

In the following table, the Non-H and H(model) columns list the number of non-hydrogen atoms and hydrogen atoms in the chain respectively. The H(added) column lists the number of hydrogen atoms added and optimized by MolProbity. The Clashes column lists the number of clashes within the asymmetric unit, whereas Symm-Clashes lists symmetry related clashes.

Mol	Chain	Non-H	H(model)	H(added)	Clashes	Symm-Clashes
1	A	4411	0	4426	35	0
2	B	3319	0	3341	23	0
3	A	36	0	0	0	0
4	A	5	0	0	0	0
5	A	33	0	0	1	0
5	B	28	0	0	0	0
All	All	7832	0	7767	53	0

The all-atom clashscore is defined as the number of clashes found per 1000 atoms (including hydrogen atoms). The all-atom clashscore for this structure is 3.

All (53) close contacts within the same asymmetric unit are listed below, sorted by their clash

magnitude.

Atom-1	Atom-2	Interatomic distance (Å)	Clash overlap (Å)
1:A:544:GLY:HA2	2:B:286:THR:HG22	1.74	0.69
1:A:253:THR:HG22	1:A:292:VAL:HG22	1.75	0.68
1:A:487:GLN:NE2	5:A:701:HOH:O	2.28	0.66
2:B:72:ARG:NH2	2:B:151:GLN:OE1	2.29	0.65
1:A:28:GLU:HG3	1:A:135:ILE:HD12	1.82	0.60
2:B:308:GLU:HA	2:B:311:LYS:HE2	1.83	0.60
1:A:90:VAL:HG21	2:B:140:PRO:HB3	1.84	0.60
2:B:73:LYS:NZ	2:B:146:TYR:OH	2.34	0.60
1:A:543:GLY:HA3	2:B:284:ARG:HA	1.86	0.56
2:B:203:GLU:HA	2:B:206:ARG:HG2	1.88	0.56
1:A:191:SER:OG	1:A:198:HIS:ND1	2.36	0.55
1:A:260:LEU:HD21	1:A:303:LEU:HD13	1.87	0.55
1:A:253:THR:OG1	1:A:255:ASN:OD1	2.25	0.55
1:A:252:TRP:HB2	1:A:295:LEU:HD11	1.89	0.54
1:A:244:ILE:HG13	1:A:267:ALA:HB2	1.88	0.53
1:A:88:TRP:CD1	2:B:143:ARG:HD2	2.43	0.53
1:A:363:ASN:HD21	1:A:366:LYS:HE3	1.75	0.51
2:B:105:SER:O	2:B:190:GLY:HA2	2.10	0.51
1:A:405:TYR:CE2	1:A:407:GLN:HB2	2.47	0.50
2:B:328:GLU:O	2:B:339:TYR:HA	2.11	0.50
2:B:74:LEU:HD21	2:B:409:THR:HA	1.94	0.49
2:B:104:LYS:HA	2:B:237:ASP:HB3	1.95	0.49
1:A:17:ASP:O	1:A:83:ARG:NH1	2.41	0.49
1:A:369:THR:O	1:A:373:GLN:HG2	2.14	0.48
1:A:491:LEU:HB3	1:A:529:GLU:HG2	1.96	0.47
1:A:503:LEU:HD22	1:A:535:TRP:HB2	1.98	0.46
1:A:247:PRO:HB2	1:A:249:LYS:HE3	1.96	0.46
2:B:425:LEU:HD23	2:B:428:GLN:HB3	1.96	0.46
1:A:542:ILE:HG12	2:B:283:LEU:HD12	1.97	0.46
1:A:303:LEU:HD21	1:A:307:ARG:HH21	1.82	0.45
1:A:363:ASN:ND2	1:A:366:LYS:HE3	2.31	0.45
1:A:443:ASP:HB3	1:A:550:LYS:HD3	1.99	0.45
2:B:393:ILE:HD13	2:B:398:TRP:HB2	1.97	0.45
2:B:270:ILE:HG12	2:B:346:PHE:HB3	1.97	0.45
1:A:399:GLU:HA	1:A:402:TRP:CD1	2.51	0.45
2:B:354:TYR:CE1	2:B:356:ARG:HB3	2.52	0.45
1:A:399:GLU:O	1:A:403:THR:OG1	2.27	0.44
2:B:21:VAL:HB	2:B:59:PRO:HD3	2.00	0.44
1:A:19:PRO:HG3	1:A:80:LEU:HB2	1.98	0.44
1:A:28:GLU:HG2	1:A:32:LYS:HE3	1.98	0.44
2:B:107:THR:OG1	2:B:198:HIS:NE2	2.39	0.44

Continued on next page...

Continued from previous page...

Atom-1	Atom-2	Interatomic distance (Å)	Clash overlap (Å)
2:B:281:LYS:HG3	2:B:284:ARG:NH1	2.34	0.43
1:A:279:LEU:HD23	1:A:299:ALA:HB1	2.00	0.43
1:A:363:ASN:HA	1:A:511:ASP:OD1	2.17	0.43
1:A:454:LYS:HZ2	1:A:552:VAL:HB	1.82	0.43
1:A:258:GLN:HA	1:A:261:VAL:HG12	1.99	0.43
1:A:249:LYS:HB2	1:A:252:TRP:CE2	2.54	0.42
1:A:229:TRP:O	1:A:232:TYR:HB2	2.19	0.41
2:B:168:LEU:HD13	2:B:180:ILE:HG21	2.01	0.41
1:A:442:VAL:HB	1:A:481:ALA:HB1	2.02	0.41
2:B:84:THR:HB	2:B:154:LYS:HE2	2.01	0.41
1:A:177:ASP:OD1	1:A:177:ASP:N	2.55	0.40
2:B:167:ILE:HG12	2:B:212:TRP:CE3	2.55	0.40

There are no symmetry-related clashes.

5.3 Torsion angles [i](#)

5.3.1 Protein backbone [i](#)

In the following table, the Percentiles column shows the percent Ramachandran outliers of the chain as a percentile score with respect to all X-ray entries followed by that with respect to entries of similar resolution.

The Analysed column shows the number of residues for which the backbone conformation was analysed, and the total number of residues.

Mol	Chain	Analysed	Favoured	Allowed	Outliers	Percentiles	
1	A	543/557 (98%)	528 (97%)	15 (3%)	0	100	100
2	B	395/428 (92%)	383 (97%)	12 (3%)	0	100	100
All	All	938/985 (95%)	911 (97%)	27 (3%)	0	100	100

There are no Ramachandran outliers to report.

5.3.2 Protein sidechains [i](#)

In the following table, the Percentiles column shows the percent sidechain outliers of the chain as a percentile score with respect to all X-ray entries followed by that with respect to entries of similar resolution.

The Analysed column shows the number of residues for which the sidechain conformation was

analysed, and the total number of residues.

Mol	Chain	Analysed	Rotameric	Outliers	Percentiles	
1	A	480/495 (97%)	475 (99%)	5 (1%)	80	93
2	B	364/390 (93%)	361 (99%)	3 (1%)	85	95
All	All	844/885 (95%)	836 (99%)	8 (1%)	82	94

All (8) residues with a non-rotameric sidechain are listed below:

Mol	Chain	Res	Type
1	A	107	THR
1	A	111	VAL
1	A	161	GLN
1	A	347	LYS
1	A	546	GLU
2	B	74	LEU
2	B	232	TYR
2	B	233	GLU

Some sidechains can be flipped to improve hydrogen bonding and reduce clashes. There are no such sidechains identified.

5.3.3 RNA [i](#)

There are no RNA molecules in this entry.

5.4 Non-standard residues in protein, DNA, RNA chains [i](#)

There are no non-standard protein/DNA/RNA residues in this entry.

5.5 Carbohydrates [i](#)

There are no carbohydrates in this entry.

5.6 Ligand geometry [i](#)

2 ligands are modelled in this entry.

In the following table, the Counts columns list the number of bonds (or angles) for which Mogul statistics could be retrieved, the number of bonds (or angles) that are observed in the model and the number of bonds (or angles) that are defined in the chemical component dictionary. The Link

column lists molecule types, if any, to which the group is linked. The Z score for a bond length (or angle) is the number of standard deviations the observed value is removed from the expected value. A bond length (or angle) with $|Z| > 2$ is considered an outlier worth inspection. RMSZ is the root-mean-square of all Z scores of the bond lengths (or angles).

Mol	Type	Chain	Res	Link	Bond lengths			Bond angles		
					Counts	RMSZ	$\# Z > 2$	Counts	RMSZ	$\# Z > 2$
3	9KD	A	601	-	36,39,39	1.32	4 (11%)	43,54,54	2.48	8 (18%)
4	SO4	A	602	-	4,4,4	0.23	0	6,6,6	0.06	0

In the following table, the Chirals column lists the number of chiral outliers, the number of chiral centers analysed, the number of these observed in the model and the number defined in the chemical component dictionary. Similar counts are reported in the Torsion and Rings columns. '-' means no outliers of that kind were identified.

Mol	Type	Chain	Res	Link	Chirals	Torsions	Rings
3	9KD	A	601	-	-	0/18/18/18	0/4/4/4
4	SO4	A	602	-	-	0/0/0/0	0/0/0/0

All (4) bond length outliers are listed below:

Mol	Chain	Res	Type	Atoms	Z	Observed(Å)	Ideal(Å)
3	A	601	9KD	C8-N1	-2.44	1.44	1.48
3	A	601	9KD	C18-C17	2.58	1.42	1.38
3	A	601	9KD	C22-C21	2.72	1.42	1.36
3	A	601	9KD	C10-N2	3.67	1.39	1.33

All (8) bond angle outliers are listed below:

Mol	Chain	Res	Type	Atoms	Z	Observed(°)	Ideal(°)
3	A	601	9KD	C18-C13-C14	-4.04	117.43	122.38
3	A	601	9KD	C27-C26-C25	-3.38	119.17	122.37
3	A	601	9KD	C11-C10-N2	-3.37	115.07	123.12
3	A	601	9KD	C11-C12-N1	2.06	123.10	121.35
3	A	601	9KD	O2-C7-C8	2.21	109.54	107.28
3	A	601	9KD	C17-C18-C13	2.32	123.89	119.72
3	A	601	9KD	O1-C13-C14	3.55	124.05	117.70
3	A	601	9KD	C10-N2-C9	13.24	125.50	114.13

There are no chirality outliers.

There are no torsion outliers.

There are no ring outliers.

No monomer is involved in short contacts.

5.7 Other polymers [i](#)

There are no such residues in this entry.

5.8 Polymer linkage issues [i](#)

There are no chain breaks in this entry.

6 Fit of model and data ⓘ

6.1 Protein, DNA and RNA chains ⓘ

In the following table, the column labelled ‘#RSRZ> 2’ contains the number (and percentage) of RSRZ outliers, followed by percent RSRZ outliers for the chain as percentile scores relative to all X-ray entries and entries of similar resolution. The OWAB column contains the minimum, median, 95th percentile and maximum values of the occupancy-weighted average B-factor per residue. The column labelled ‘Q< 0.9’ lists the number of (and percentage) of residues with an average occupancy less than 0.9.

Mol	Chain	Analysed	<RSRZ>	#RSRZ>2	OWAB(Å ²)	Q<0.9
1	A	547/557 (98%)	0.82	72 (13%) 4 3	37, 75, 125, 154	0
2	B	401/428 (93%)	0.79	52 (12%) 4 3	39, 66, 116, 130	0
All	All	948/985 (96%)	0.81	124 (13%) 4 3	37, 70, 121, 154	0

All (124) RSRZ outliers are listed below:

Mol	Chain	Res	Type	RSRZ
1	A	218	ASP	11.1
2	B	358	ARG	8.9
1	A	289	LEU	8.6
1	A	286	THR	8.1
1	A	285	GLY	8.1
1	A	290	THR	7.7
1	A	92	LEU	7.1
1	A	288	ALA	7.1
1	A	257	ILE	6.6
1	A	222	GLN	6.5
2	B	241	VAL	5.8
1	A	221	HIS	5.6
2	B	237	ASP	5.5
1	A	282	LEU	5.0
1	A	287	LYS	5.0
1	A	255	ASN	4.9
1	A	297	GLU	4.9
1	A	292	VAL	4.9
1	A	295	LEU	4.9
1	A	252	TRP	4.8
1	A	548	VAL	4.8
1	A	214	LEU	4.6
1	A	247	PRO	4.6
2	B	207	GLN	4.6

Continued on next page...

Continued from previous page...

Mol	Chain	Res	Type	RSRZ
1	A	300	GLU	4.4
1	A	256	ASP	4.4
2	B	209	LEU	4.4
1	A	184	MET	4.4
1	A	283	LEU	4.3
1	A	250	ASP	4.2
2	B	193	LEU	4.1
1	A	260	LEU	4.1
2	B	210	LEU	4.1
2	B	212	TRP	4.0
2	B	94	ILE	4.0
2	B	357	MET	3.9
2	B	202	ILE	3.8
2	B	359	GLY	3.8
2	B	168	LEU	3.8
1	A	261	VAL	3.8
2	B	195	ILE	3.7
2	B	238	LYS	3.7
1	A	91	GLN	3.7
2	B	67	ASP	3.6
1	A	112	GLY	3.6
2	B	166	LYS	3.6
1	A	254	VAL	3.6
1	A	291	GLU	3.6
1	A	294	PRO	3.6
1	A	24	TRP	3.6
2	B	87	PHE	3.5
1	A	551	LEU	3.5
2	B	232	TYR	3.4
1	A	552	VAL	3.4
2	B	198	HIS	3.4
2	B	191	SER	3.3
1	A	216	THR	3.3
2	B	85	GLN	3.3
2	B	197	GLN	3.3
2	B	196	GLY	3.2
1	A	38	CYS	3.2
2	B	239	TRP	3.2
2	B	284	ARG	3.2
1	A	248	GLU	3.1
2	B	240	THR	3.1
2	B	5	ILE	3.1

Continued on next page...

Continued from previous page...

Mol	Chain	Res	Type	RSRZ
2	B	170	PRO	3.0
1	A	550	LYS	3.0
1	A	293	ILE	3.0
1	A	277	ARG	2.9
2	B	206	ARG	2.9
1	A	244	ILE	2.9
2	B	88	TRP	2.8
1	A	263	LYS	2.8
1	A	298	GLU	2.8
2	B	14	PRO	2.8
1	A	77	PHE	2.8
2	B	70	LYS	2.8
1	A	63	ILE	2.7
1	A	246	LEU	2.7
1	A	309	ILE	2.7
1	A	217	PRO	2.6
2	B	277	ARG	2.6
1	A	305	GLU	2.6
1	A	219	LYS	2.6
1	A	74	LEU	2.5
1	A	346	PHE	2.5
2	B	211	ARG	2.5
1	A	113	ASP	2.4
2	B	149	LEU	2.4
1	A	111	VAL	2.4
2	B	16	MET	2.4
1	A	304	ALA	2.4
1	A	37	ILE	2.4
1	A	279	LEU	2.4
1	A	14	PRO	2.3
1	A	25	PRO	2.3
1	A	296	THR	2.3
1	A	284	ARG	2.3
2	B	203	GLU	2.3
2	B	173	LYS	2.3
1	A	549	ASP	2.3
2	B	171	PHE	2.3
1	A	84	THR	2.3
2	B	13	LYS	2.2
2	B	93	GLY	2.2
1	A	115	TYR	2.2
2	B	236	PRO	2.2

Continued on next page...

Continued from previous page...

Mol	Chain	Res	Type	RSRZ
2	B	15	GLY	2.2
2	B	169	GLU	2.2
1	A	116	PHE	2.2
1	A	75	VAL	2.2
1	A	301	LEU	2.2
2	B	234	LEU	2.2
1	A	71	TRP	2.2
1	A	542	ILE	2.2
2	B	118	VAL	2.1
2	B	422	LEU	2.1
2	B	356	ARG	2.1
2	B	69	THR	2.1
2	B	178	ILE	2.1
1	A	541	GLY	2.0
2	B	372	VAL	2.0
1	A	302	GLU	2.0

6.2 Non-standard residues in protein, DNA, RNA chains [i](#)

There are no non-standard protein/DNA/RNA residues in this entry.

6.3 Carbohydrates [i](#)

There are no carbohydrates in this entry.

6.4 Ligands [i](#)

In the following table, the Atoms column lists the number of modelled atoms in the group and the number defined in the chemical component dictionary. LLDF column lists the quality of electron density of the group with respect to its neighbouring residues in protein, DNA or RNA chains. The B-factors column lists the minimum, median, 95th percentile and maximum values of B factors of atoms in the group. The column labelled 'Q< 0.9' lists the number of atoms with occupancy less than 0.9.

Mol	Type	Chain	Res	Atoms	RSCC	RSR	LLDF	B-factors(\AA^2)	Q<0.9
3	9KD	A	601	36/36	0.91	0.20	0.51	63,76,82,83	0
4	SO4	A	602	5/5	0.94	0.24	-	99,106,121,124	0

6.5 Other polymers [i](#)

There are no such residues in this entry.