



Full wwPDB X-ray Structure Validation Report ⓘ

Nov 13, 2017 – 06:31 PM EST

PDB ID : 3VVP
Title : Crystal structure of MATE in complex with Br-NRF
Authors : Tanaka, Y.; Ishitani, R.; Nureki, O.
Deposited on : unknown
Resolution : 2.91 Å(reported)

This is a Full wwPDB X-ray Structure Validation Report for a publicly released PDB entry.

We welcome your comments at validation@mail.wwpdb.org

A user guide is available at

<http://wwpdb.org/validation/2016/XrayValidationReportHelp>

with specific help available everywhere you see the ⓘ symbol.

The following versions of software and data (see [references ⓘ](#)) were used in the production of this report:

MolProbity : 4.02b-467
Mogul : 1.7.2 (RC1), CSD as538be (2017)
Xtriage (Phenix) : 1.9-1692
EDS : rb-20030345
Percentile statistics : 20161228.v01 (using entries in the PDB archive December 28th 2016)
Refmac : 5.8.0135
CCP4 : 6.5.0
Ideal geometry (proteins) : Engh & Huber (2001)
Ideal geometry (DNA, RNA) : Parkinson et al. (1996)
Validation Pipeline (wwPDB-VP) : rb-20030345

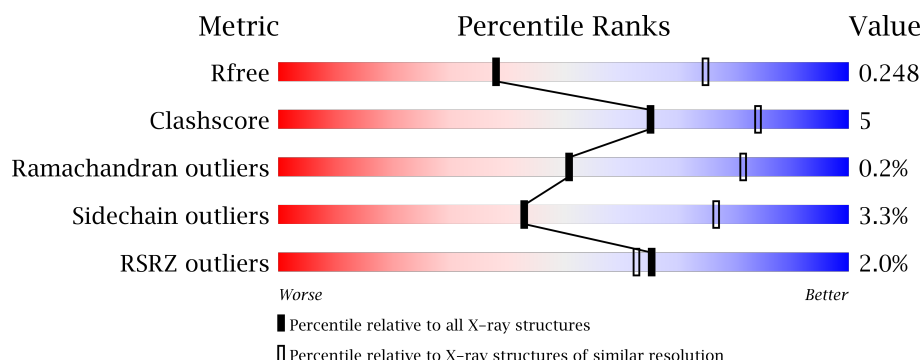
1 Overall quality at a glance

The following experimental techniques were used to determine the structure:

X-RAY DIFFRACTION

The reported resolution of this entry is 2.91 Å.

Percentile scores (ranging between 0-100) for global validation metrics of the entry are shown in the following graphic. The table shows the number of entries on which the scores are based.



Metric	Whole archive (#Entries)	Similar resolution (#Entries, resolution range(Å))
R_{free}	100719	1813 (2.94-2.90)
Clashscore	112137	2045 (2.94-2.90)
Ramachandran outliers	110173	1997 (2.94-2.90)
Sidechain outliers	110143	1999 (2.94-2.90)
RSRZ outliers	101464	1825 (2.94-2.90)

The table below summarises the geometric issues observed across the polymeric chains and their fit to the electron density. The red, orange, yellow and green segments on the lower bar indicate the fraction of residues that contain outliers for ≥ 3 , 2, 1 and 0 types of geometric quality criteria. A grey segment represents the fraction of residues that are not modelled. The numeric value for each fraction is indicated below the corresponding segment, with a dot representing fractions $\leq 5\%$. The upper red bar (where present) indicates the fraction of residues that have poor fit to the electron density. The numeric value is given above the bar.

Mol	Chain	Length	Quality of chain
1	A	461	<div> <div>3%</div> <div>80%</div> <div>10%</div> <div>9%</div> </div>
1	B	461	<div> <div>%</div> <div>80%</div> <div>9%</div> <div>11%</div> </div>

The following table lists non-polymeric compounds, carbohydrate monomers and non-standard residues in protein, DNA, RNA chains that are outliers for geometric or electron-density-fit criteria:

Mol	Type	Chain	Res	Chirality	Geometry	Clashes	Electron density
2	BNU	A	1001	-	-	X	X

2 Entry composition [i](#)

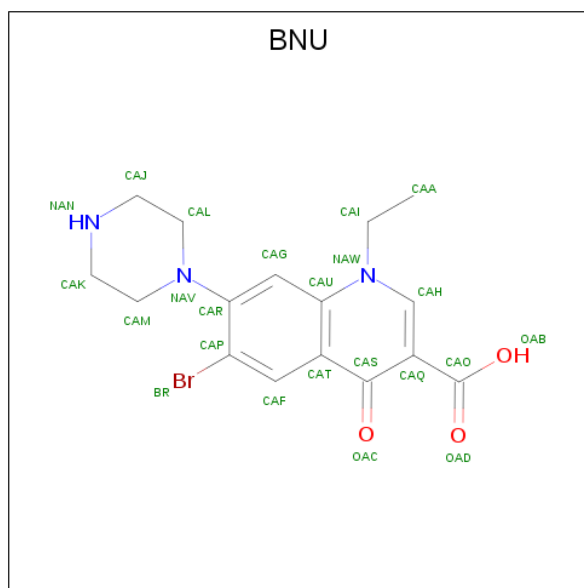
There are 3 unique types of molecules in this entry. The entry contains 5789 atoms, of which 0 are hydrogens and 0 are deuteriums.

In the tables below, the ZeroOcc column contains the number of atoms modelled with zero occupancy, the AltConf column contains the number of residues with at least one atom in alternate conformation and the Trace column contains the number of residues modelled with at most 2 atoms.

- Molecule 1 is a protein called Putative uncharacterized protein.

Mol	Chain	Residues	Atoms					ZeroOcc	AltConf	Trace
1	A	420	Total	C	N	O	S	0	0	0
			2956	1938	480	518	20			
1	B	412	Total	C	N	O	S	0	0	0
			2796	1826	457	499	14			

- Molecule 2 is 6-bromo-1-ethyl-4-oxo-7-(piperazin-1-yl)-1,4-dihydroquinoline-3-carboxylic acid (three-letter code: BNU) (formula: $C_{16}H_{18}BrN_3O_3$).



Mol	Chain	Residues	Atoms					ZeroOcc	AltConf
2	A	1	Total	Br	C	N	O	0	0
			23	1	16	3	3		

- Molecule 3 is water.

Mol	Chain	Residues	Atoms		ZeroOcc	AltConf
3	A	5	Total	O	0	0
			5	5		

Continued on next page...

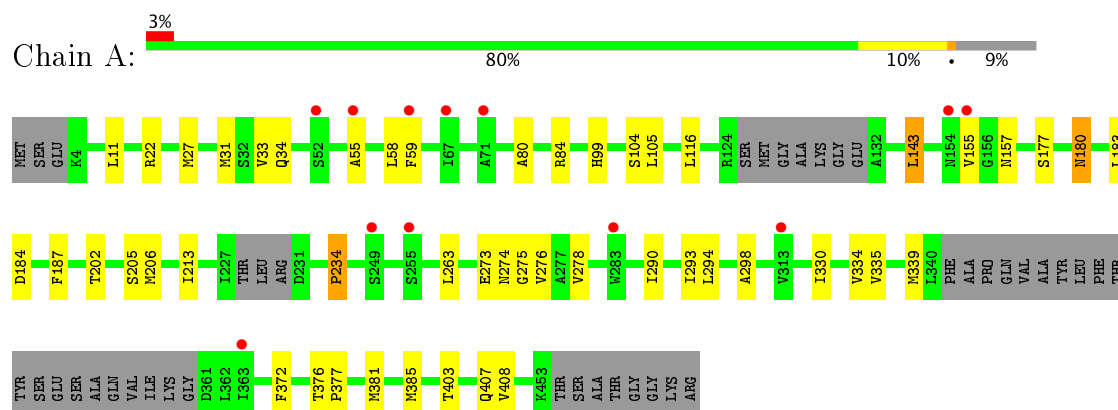
Continued from previous page...

Mol	Chain	Residues	Atoms		ZeroOcc	AltConf
3	B	9	Total	O	0	0
			9	9		

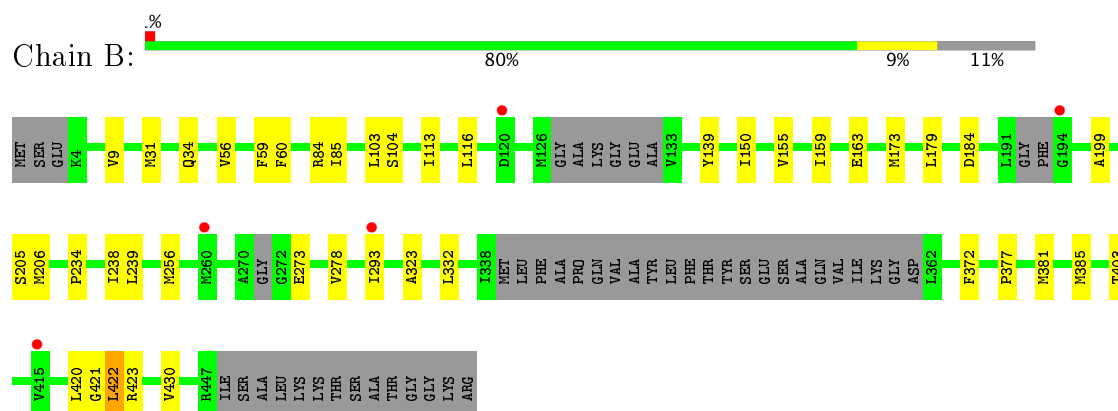
3 Residue-property plots

These plots are drawn for all protein, RNA and DNA chains in the entry. The first graphic for a chain summarises the proportions of the various outlier classes displayed in the second graphic. The second graphic shows the sequence view annotated by issues in geometry and electron density. Residues are color-coded according to the number of geometric quality criteria for which they contain at least one outlier: green = 0, yellow = 1, orange = 2 and red = 3 or more. A red dot above a residue indicates a poor fit to the electron density ($\text{RSRZ} > 2$). Stretches of 2 or more consecutive residues without any outlier are shown as a green connector. Residues present in the sample, but not in the model, are shown in grey.

• Molecule 1: Putative uncharacterized protein



• Molecule 1: Putative uncharacterized protein



4 Data and refinement statistics

Property	Value	Source
Space group	P 6	Depositor
Cell constants a, b, c, α , β , γ	122.37Å 122.37Å 110.38Å 90.00° 90.00° 120.00°	Depositor
Resolution (Å)	48.95 – 2.91 48.95 – 2.91	Depositor EDS
% Data completeness (in resolution range)	99.5 (48.95-2.91) 99.5 (48.95-2.91)	Depositor EDS
R_{merge}	0.29	Depositor
R_{sym}	(Not available)	Depositor
$\langle I/\sigma(I) \rangle$ ¹	3.57 (at 2.91Å)	Xtriage
Refinement program	PHENIX 1.8_1069	Depositor
R, R_{free}	0.285 , 0.326 0.216 , 0.248	Depositor DCC
R_{free} test set	1987 reflections (9.65%)	DCC
Wilson B-factor (Å ²)	61.0	Xtriage
Anisotropy	0.131	Xtriage
Bulk solvent k_{sol} (e/Å ³), B_{sol} (Å ²)	0.29 , 33.4	EDS
L-test for twinning ²	$\langle L \rangle = 0.40$, $\langle L^2 \rangle = 0.22$	Xtriage
Estimated twinning fraction	0.379 for h,-h-k,-l	Xtriage
F_o, F_c correlation	0.91	EDS
Total number of atoms	5789	wwPDB-VP
Average B, all atoms (Å ²)	51.0	wwPDB-VP

Xtriage's analysis on translational NCS is as follows: *The largest off-origin peak in the Patterson function is 6.48% of the height of the origin peak. No significant pseudotranslation is detected.*

¹Intensities estimated from amplitudes.

²Theoretical values of $\langle |L| \rangle$, $\langle L^2 \rangle$ for acentric reflections are 0.5, 0.333 respectively for untwinned datasets, and 0.375, 0.2 for perfectly twinned datasets.

5 Model quality

5.1 Standard geometry

Bond lengths and bond angles in the following residue types are not validated in this section: BNU

The Z score for a bond length (or angle) is the number of standard deviations the observed value is removed from the expected value. A bond length (or angle) with $|Z| > 5$ is considered an outlier worth inspection. RMSZ is the root-mean-square of all Z scores of the bond lengths (or angles).

Mol	Chain	Bond lengths		Bond angles	
		RMSZ	# Z >5	RMSZ	# Z >5
1	A	0.22	0/3008	0.39	0/4103
1	B	0.21	0/2841	0.37	0/3886
All	All	0.22	0/5849	0.38	0/7989

There are no bond length outliers.

There are no bond angle outliers.

There are no chirality outliers.

There are no planarity outliers.

5.2 Too-close contacts

In the following table, the Non-H and H(model) columns list the number of non-hydrogen atoms and hydrogen atoms in the chain respectively. The H(added) column lists the number of hydrogen atoms added and optimized by MolProbity. The Clashes column lists the number of clashes within the asymmetric unit, whereas Symm-Clashes lists symmetry related clashes.

Mol	Chain	Non-H	H(model)	H(added)	Clashes	Symm-Clashes
1	A	2956	0	2900	32	0
1	B	2796	0	2629	18	0
2	A	23	0	17	12	0
3	A	5	0	0	0	0
3	B	9	0	0	0	0
All	All	5789	0	5546	53	0

The all-atom clashscore is defined as the number of clashes found per 1000 atoms (including hydrogen atoms). The all-atom clashscore for this structure is 5.

All (53) close contacts within the same asymmetric unit are listed below, sorted by their clash magnitude.

Atom-1	Atom-2	Interatomic distance (Å)	Clash overlap (Å)
1:A:157:ASN:ND2	2:A:1001:BNU:H13	1.96	0.81
1:A:180:ASN:HD21	1:A:202:THR:HA	1.44	0.81
2:A:1001:BNU:H10	2:A:1001:BNU:BR	2.44	0.72
1:A:180:ASN:ND2	2:A:1001:BNU:OAB	2.30	0.63
1:A:403:THR:HA	1:A:407:GLN:HE21	1.66	0.61
1:A:157:ASN:ND2	2:A:1001:BNU:CAL	2.67	0.58
1:A:157:ASN:ND2	2:A:1001:BNU:CAJ	2.65	0.57
1:A:157:ASN:CG	2:A:1001:BNU:H13	2.26	0.55
1:A:275:GLY:H	1:A:278:VAL:HG23	1.72	0.55
1:A:274:ASN:N	1:A:275:GLY:HA3	2.21	0.55
1:A:206:MET:HA	2:A:1001:BNU:H4	1.89	0.54
1:A:34:GLN:OE1	1:A:177:SER:OG	2.27	0.53
1:A:273:GLU:HA	1:A:276:VAL:HG23	1.90	0.53
1:A:183:LEU:HD22	1:A:187:PHE:HE1	1.74	0.53
1:A:104:SER:HB3	1:A:155:VAL:HG21	1.90	0.52
1:B:372:PHE:HB3	1:B:430:VAL:HG12	1.92	0.52
1:B:179:LEU:HD23	1:B:205:SER:HA	1.92	0.52
1:B:9:VAL:HG22	1:B:85:ILE:HD13	1.93	0.51
1:B:56:VAL:O	1:B:60:PHE:HB2	2.11	0.51
1:A:59:PHE:HE2	1:A:143:LEU:HD13	1.75	0.51
1:B:150:ILE:HA	1:B:206:MET:HE2	1.94	0.49
1:A:99:HIS:CE1	1:A:234:PRO:HA	2.48	0.49
1:B:293:ILE:HD12	1:B:377:PRO:HG3	1.95	0.48
1:A:11:LEU:HD21	1:A:22:ARG:HG2	1.96	0.48
1:B:56:VAL:HA	1:B:59:PHE:CZ	2.49	0.47
2:A:1001:BNU:H9	2:A:1001:BNU:H5	1.55	0.47
1:A:55:ALA:HA	1:A:58:LEU:HD12	1.95	0.47
1:A:205:SER:HB3	2:A:1001:BNU:H8	1.96	0.47
1:B:139:TYR:CE2	1:B:199:ALA:HB2	2.50	0.47
1:B:104:SER:HB3	1:B:155:VAL:HG21	1.98	0.46
1:B:421:GLY:O	1:B:423:ARG:N	2.45	0.46
1:A:263:LEU:HG	1:A:408:VAL:HG22	1.97	0.46
1:A:293:ILE:HD12	1:A:377:PRO:HB3	1.97	0.46
1:A:290:ILE:HG23	1:A:294:LEU:HD13	1.98	0.45
1:B:278:VAL:HG11	1:B:422:LEU:HD11	1.99	0.45
2:A:1001:BNU:H19	2:A:1001:BNU:H9	1.61	0.44
1:A:330:ILE:O	1:A:334:VAL:HG23	2.18	0.43
1:B:31:MET:HA	1:B:34:GLN:HG2	1.99	0.43
1:A:372:PHE:O	1:A:376:THR:OG1	2.34	0.43
1:A:376:THR:N	1:A:377:PRO:HD2	2.34	0.43
1:A:213:ILE:HD11	2:A:1001:BNU:H14	1.84	0.42
1:A:157:ASN:HD21	2:A:1001:BNU:CAL	2.32	0.42

Continued on next page...

Continued from previous page...

Atom-1	Atom-2	Interatomic distance (Å)	Clash overlap (Å)
1:A:27:MET:HG2	1:A:298:ALA:HB3	2.00	0.42
1:A:335:VAL:O	1:A:339:MET:HG2	2.19	0.42
1:A:33:VAL:HG12	1:A:177:SER:HB2	2.02	0.41
1:B:84:ARG:HH21	1:B:238:ILE:HD13	1.86	0.41
1:B:256:MET:HG3	1:B:403:THR:HG21	2.03	0.41
1:A:377:PRO:O	1:A:381:MET:HB2	2.20	0.41
1:B:377:PRO:O	1:B:381:MET:HG2	2.21	0.41
1:B:113:ILE:HD13	1:B:113:ILE:HA	1.90	0.40
1:B:323:ALA:HB1	1:B:381:MET:HE2	2.02	0.40
1:A:80:ALA:O	1:A:84:ARG:HG2	2.21	0.40
1:B:159:ILE:O	1:B:163:GLU:HB2	2.22	0.40

There are no symmetry-related clashes.

5.3 Torsion angles [i](#)

5.3.1 Protein backbone [i](#)

In the following table, the Percentiles column shows the percent Ramachandran outliers of the chain as a percentile score with respect to all X-ray entries followed by that with respect to entries of similar resolution.

The Analysed column shows the number of residues for which the backbone conformation was analysed, and the total number of residues.

Mol	Chain	Analysed	Favoured	Allowed	Outliers	Percentiles	
1	A	412/461 (89%)	407 (99%)	4 (1%)	1 (0%)	51	81
1	B	402/461 (87%)	395 (98%)	6 (2%)	1 (0%)	51	81
All	All	814/922 (88%)	802 (98%)	10 (1%)	2 (0%)	51	81

All (2) Ramachandran outliers are listed below:

Mol	Chain	Res	Type
1	A	234	PRO
1	B	234	PRO

5.3.2 Protein sidechains ⓘ

In the following table, the Percentiles column shows the percent sidechain outliers of the chain as a percentile score with respect to all X-ray entries followed by that with respect to entries of similar resolution.

The Analysed column shows the number of residues for which the sidechain conformation was analysed, and the total number of residues.

Mol	Chain	Analysed	Rotameric	Outliers	Percentiles	
1	A	274/362 (76%)	267 (97%)	7 (3%)	51	82
1	B	238/362 (66%)	228 (96%)	10 (4%)	34	68
All	All	512/724 (71%)	495 (97%)	17 (3%)	43	77

All (17) residues with a non-rotameric sidechain are listed below:

Mol	Chain	Res	Type
1	A	31	MET
1	A	105	LEU
1	A	116	LEU
1	A	143	LEU
1	A	180	ASN
1	A	184	ASP
1	A	385	MET
1	B	103	LEU
1	B	116	LEU
1	B	173	MET
1	B	184	ASP
1	B	239	LEU
1	B	273	GLU
1	B	332	LEU
1	B	385	MET
1	B	420	LEU
1	B	422	LEU

Some sidechains can be flipped to improve hydrogen bonding and reduce clashes. All (6) such sidechains are listed below:

Mol	Chain	Res	Type
1	A	157	ASN
1	A	180	ASN
1	A	387	GLN
1	A	407	GLN
1	B	38	ASN

Continued on next page...

Continued from previous page...

Mol	Chain	Res	Type
1	B	180	ASN

5.3.3 RNA ⓘ

There are no RNA molecules in this entry.

5.4 Non-standard residues in protein, DNA, RNA chains ⓘ

There are no non-standard protein/DNA/RNA residues in this entry.

5.5 Carbohydrates ⓘ

There are no carbohydrates in this entry.

5.6 Ligand geometry ⓘ

1 ligand is modelled in this entry.

In the following table, the Counts columns list the number of bonds (or angles) for which Mogul statistics could be retrieved, the number of bonds (or angles) that are observed in the model and the number of bonds (or angles) that are defined in the Chemical Component Dictionary. The Link column lists molecule types, if any, to which the group is linked. The Z score for a bond length (or angle) is the number of standard deviations the observed value is removed from the expected value. A bond length (or angle) with $|Z| > 2$ is considered an outlier worth inspection. RMSZ is the root-mean-square of all Z scores of the bond lengths (or angles).

Mol	Type	Chain	Res	Link	Bond lengths			Bond angles		
					Counts	RMSZ	# $ Z > 2$	Counts	RMSZ	# $ Z > 2$
2	BNU	A	1001	-	21,25,25	1.88	5 (23%)	24,36,36	2.49	7 (29%)

In the following table, the Chirals column lists the number of chiral outliers, the number of chiral centers analysed, the number of these observed in the model and the number defined in the Chemical Component Dictionary. Similar counts are reported in the Torsion and Rings columns. '-' means no outliers of that kind were identified.

Mol	Type	Chain	Res	Link	Chirals	Torsions	Rings
2	BNU	A	1001	-	-	0/6/18/18	0/3/3/3

All (5) bond length outliers are listed below:

Mol	Chain	Res	Type	Atoms	Z	Observed(Å)	Ideal(Å)
2	A	1001	BNU	CAT-CAU	-4.43	1.38	1.41
2	A	1001	BNU	CAU-NAW	-4.13	1.33	1.39
2	A	1001	BNU	CAI-NAW	-2.45	1.47	1.49
2	A	1001	BNU	CAR-NAV	-2.25	1.36	1.41
2	A	1001	BNU	CAM-NAV	2.48	1.50	1.46

All (7) bond angle outliers are listed below:

Mol	Chain	Res	Type	Atoms	Z	Observed(°)	Ideal(°)
2	A	1001	BNU	CAG-CAR-NAV	-5.75	114.83	122.69
2	A	1001	BNU	BR-CAP-CAF	-3.79	113.01	119.07
2	A	1001	BNU	CAG-CAR-CAP	-2.75	116.55	120.78
2	A	1001	BNU	CAH-CAQ-CAS	-2.50	118.82	119.99
2	A	1001	BNU	CAS-CAT-CAU	3.04	121.11	118.51
2	A	1001	BNU	CAL-NAV-CAR	4.80	127.41	116.33
2	A	1001	BNU	BR-CAP-CAR	4.99	126.15	120.57

There are no chirality outliers.

There are no torsion outliers.

There are no ring outliers.

1 monomer is involved in 12 short contacts:

Mol	Chain	Res	Type	Clashes	Symm-Clashes
2	A	1001	BNU	12	0

5.7 Other polymers [i](#)

There are no such residues in this entry.

5.8 Polymer linkage issues [i](#)

There are no chain breaks in this entry.

6 Fit of model and data ⓘ

6.1 Protein, DNA and RNA chains ⓘ

In the following table, the column labelled ‘#RSRZ> 2’ contains the number (and percentage) of RSRZ outliers, followed by percent RSRZ outliers for the chain as percentile scores relative to all X-ray entries and entries of similar resolution. The OWAB column contains the minimum, median, 95th percentile and maximum values of the occupancy-weighted average B-factor per residue. The column labelled ‘Q< 0.9’ lists the number of (and percentage) of residues with an average occupancy less than 0.9.

Mol	Chain	Analysed	<RSRZ>	#RSRZ>2	OWAB(Å ²)	Q<0.9
1	A	420/461 (91%)	0.07	12 (2%) 52 47	27, 45, 69, 82	0
1	B	412/461 (89%)	0.11	5 (1%) 79 78	31, 54, 78, 96	0
All	All	832/922 (90%)	0.09	17 (2%) 65 63	27, 50, 74, 96	0

All (17) RSRZ outliers are listed below:

Mol	Chain	Res	Type	RSRZ
1	A	363	ILE	5.7
1	A	313	VAL	5.2
1	A	71	ALA	4.1
1	A	55	ALA	3.5
1	A	155	VAL	3.4
1	B	120	ASP	3.4
1	A	249	SER	3.3
1	B	415	VAL	3.0
1	A	283	TRP	2.9
1	A	255	SER	2.8
1	B	260	MET	2.8
1	A	59	PHE	2.4
1	B	293	ILE	2.4
1	A	154	ASN	2.4
1	B	194	GLY	2.3
1	A	67	ILE	2.2
1	A	52	SER	2.0

6.2 Non-standard residues in protein, DNA, RNA chains ⓘ

There are no non-standard protein/DNA/RNA residues in this entry.

6.3 Carbohydrates [i](#)

There are no carbohydrates in this entry.

6.4 Ligands [i](#)

In the following table, the Atoms column lists the number of modelled atoms in the group and the number defined in the chemical component dictionary. LLDF column lists the quality of electron density of the group with respect to its neighbouring residues in protein, DNA or RNA chains. The B-factors column lists the minimum, median, 95th percentile and maximum values of B factors of atoms in the group. The column labelled 'Q< 0.9' lists the number of atoms with occupancy less than 0.9.

Mol	Type	Chain	Res	Atoms	RSCC	RSR	LLDF	B-factors(\AA^2)	Q<0.9
2	BNU	A	1001	23/23	0.73	0.35	2.72	128,129,131,468	0

6.5 Other polymers [i](#)

There are no such residues in this entry.