



Full wwPDB X-ray Structure Validation Report ⓘ

Feb 13, 2017 – 07:14 pm GMT

PDB ID : 3VWS
Title : Dengue serotype 3 RNA-dependent RNA polymerase bound to NITD-107
Authors : Noble, C.G.; Lescar, J.
Deposited on : 2012-08-31
Resolution : 2.10 Å(reported)

This is a Full wwPDB X-ray Structure Validation Report for a publicly released PDB entry.

We welcome your comments at validation@mail.wwpdb.org

A user guide is available at

<http://wwpdb.org/validation/2016/XrayValidationReportHelp>

with specific help available everywhere you see the ⓘ symbol.

The following versions of software and data (see [references ⓘ](#)) were used in the production of this report:

MolProbity : 4.02b-467
Mogul : 1.7.2 (RC1), CSD as538be (2017)
Xtriage (Phenix) : 1.9-1692
EDS : trunk28620
Percentile statistics : 20161228.v01 (using entries in the PDB archive December 28th 2016)
Refmac : 5.8.0135
CCP4 : 6.5.0
Ideal geometry (proteins) : Engh & Huber (2001)
Ideal geometry (DNA, RNA) : Parkinson et al. (1996)
Validation Pipeline (wwPDB-VP) : recalc28949

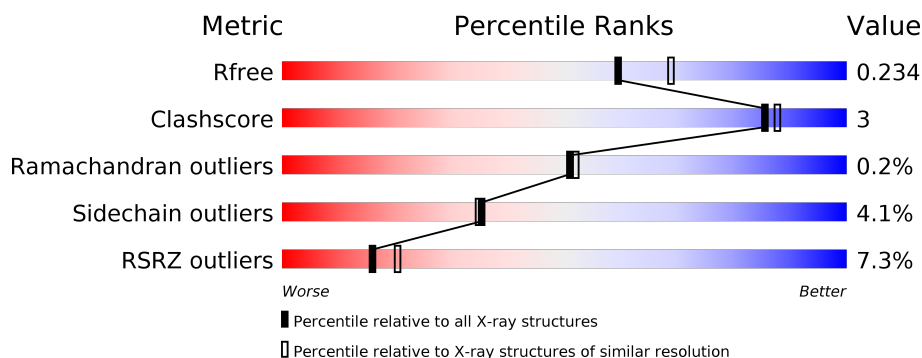
1 Overall quality at a glance

The following experimental techniques were used to determine the structure:

X-RAY DIFFRACTION

The reported resolution of this entry is 2.10 Å.

Percentile scores (ranging between 0-100) for global validation metrics of the entry are shown in the following graphic. The table shows the number of entries on which the scores are based.



Metric	Whole archive (#Entries)	Similar resolution (#Entries, resolution range(Å))
R_{free}	100719	4243 (2.10-2.10)
Clashscore	112137	4788 (2.10-2.10)
Ramachandran outliers	110173	4740 (2.10-2.10)
Sidechain outliers	110143	4741 (2.10-2.10)
RSRZ outliers	101464	4275 (2.10-2.10)

The table below summarises the geometric issues observed across the polymeric chains and their fit to the electron density. The red, orange, yellow and green segments on the lower bar indicate the fraction of residues that contain outliers for ≥ 3 , 2, 1 and 0 types of geometric quality criteria. A grey segment represents the fraction of residues that are not modelled. The numeric value for each fraction is indicated below the corresponding segment, with a dot representing fractions $\leq 5\%$. The upper red bar (where present) indicates the fraction of residues that have poor fit to the electron density. The numeric value is given above the bar.

Mol	Chain	Length	Quality of chain
1	A	635	

2 Entry composition

There are 5 unique types of molecules in this entry. The entry contains 5342 atoms, of which 0 are hydrogens and 0 are deuteriums.

In the tables below, the ZeroOcc column contains the number of atoms modelled with zero occupancy, the AltConf column contains the number of residues with at least one atom in alternate conformation and the Trace column contains the number of residues modelled with at most 2 atoms.

- Molecule 1 is a protein called Non-structural protein 5.

Mol	Chain	Residues	Atoms					ZeroOcc	AltConf	Trace
1	A	592	Total	C	N	O	S	0	5	0
			4853	3066	870	884	33			

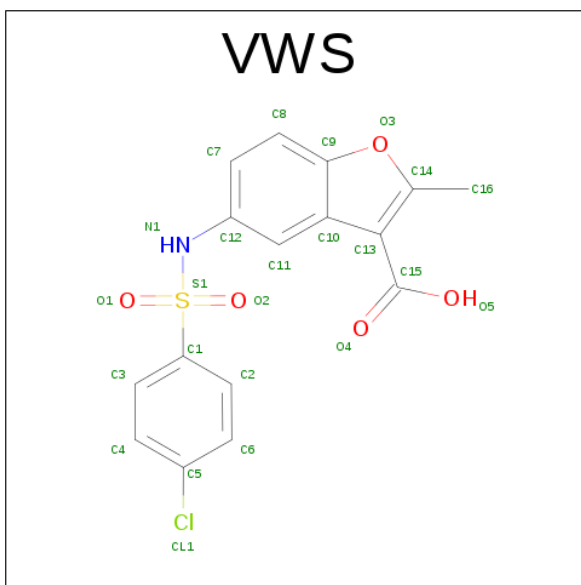
There are 7 discrepancies between the modelled and reference sequences:

Chain	Residue	Modelled	Actual	Comment	Reference
A	266	GLY	-	EXPRESSION TAG	UNP Q6DLV0
A	267	SER	-	EXPRESSION TAG	UNP Q6DLV0
A	268	HIS	-	EXPRESSION TAG	UNP Q6DLV0
A	269	MET	-	EXPRESSION TAG	UNP Q6DLV0
A	270	LEU	-	EXPRESSION TAG	UNP Q6DLV0
A	271	ASP	-	EXPRESSION TAG	UNP Q6DLV0
A	374	GLU	GLY	SEE REMARK 999	UNP Q6DLV0

- Molecule 2 is ZINC ION (three-letter code: ZN) (formula: Zn).

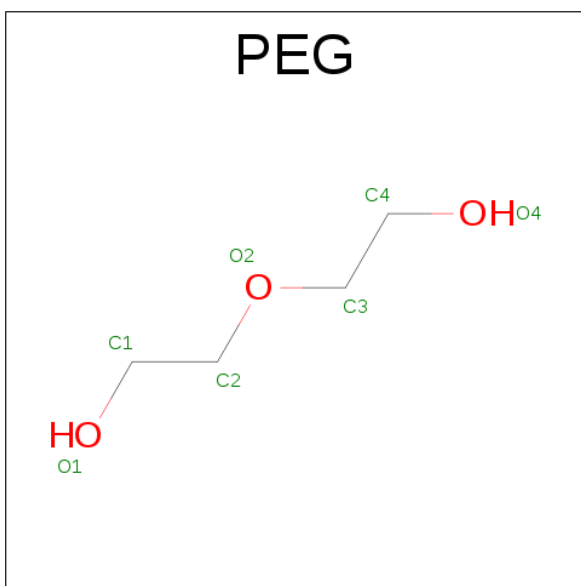
Mol	Chain	Residues	Atoms		ZeroOcc	AltConf
2	A	2	Total	Zn	0	0
			2	2		

- Molecule 3 is 5-{{[(4-CHLOROPHENYL)SULFONYL]AMINO}-2-METHYL-1-BENZOFURAN-3-CARBOXYLIC ACID (three-letter code: VWS) (formula: C₁₆H₁₂ClNO₅S).



Mol	Chain	Residues	Atoms						ZeroOcc	AltConf
3	A	1	Total	C	Cl	N	O	S	0	0
			24	16	1	1	5	1		
3	A	1	Total	C	Cl	N	O	S	0	0
			24	16	1	1	5	1		

- Molecule 4 is DI(HYDROXYETHYL)ETHER (three-letter code: PEG) (formula: $C_4H_{10}O_3$).



Mol	Chain	Residues	Atoms			ZeroOcc	AltConf
4	A	1	Total	C	O	0	0
			7	4	3		

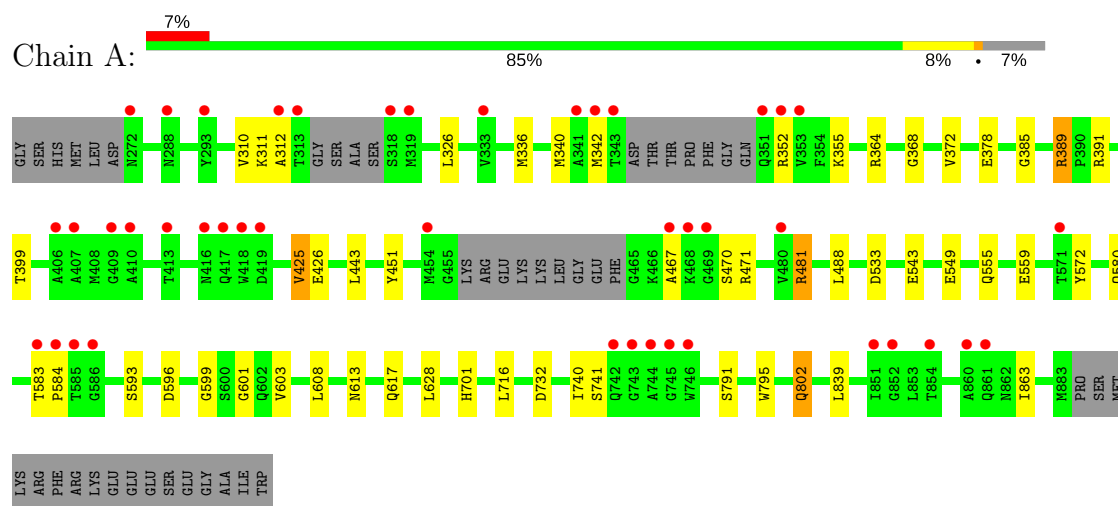
- Molecule 5 is water.

Mol	Chain	Residues	Atoms		ZeroOcc	AltConf
5	A	432	Total 432	O 432	0	0

3 Residue-property plots [i](#)

These plots are drawn for all protein, RNA and DNA chains in the entry. The first graphic for a chain summarises the proportions of the various outlier classes displayed in the second graphic. The second graphic shows the sequence view annotated by issues in geometry and electron density. Residues are color-coded according to the number of geometric quality criteria for which they contain at least one outlier: green = 0, yellow = 1, orange = 2 and red = 3 or more. A red dot above a residue indicates a poor fit to the electron density ($RSRZ > 2$). Stretches of 2 or more consecutive residues without any outlier are shown as a green connector. Residues present in the sample, but not in the model, are shown in grey.

• Molecule 1: Non-structural protein 5



4 Data and refinement statistics

Property	Value	Source
Space group	C 2 2 21	Depositor
Cell constants a, b, c, α , β , γ	161.46Å 177.73Å 57.93Å 90.00° 90.00° 90.00°	Depositor
Resolution (Å)	29.88 – 2.10 29.88 – 2.10	Depositor EDS
% Data completeness (in resolution range)	(Not available) (29.88-2.10) 99.7 (29.88-2.10)	Depositor EDS
R_{merge}	(Not available)	Depositor
R_{sym}	(Not available)	Depositor
$\langle I/\sigma(I) \rangle$ ¹	2.26 (at 2.10Å)	Xtriage
Refinement program	BUSTER 2.8.0	Depositor
R, R_{free}	0.181 , 0.224 0.190 , 0.234	Depositor DCC
R_{free} test set	2482 reflections (5.33%)	DCC
Wilson B-factor (Å ²)	34.7	Xtriage
Anisotropy	0.169	Xtriage
Bulk solvent k_{sol} (e/Å ³), B_{sol} (Å ²)	0.33 , 58.1	EDS
L-test for twinning ²	$\langle L \rangle = 0.48$, $\langle L^2 \rangle = 0.31$	Xtriage
Estimated twinning fraction	No twinning to report.	Xtriage
F_o, F_c correlation	0.96	EDS
Total number of atoms	5342	wwPDB-VP
Average B, all atoms (Å ²)	47.0	wwPDB-VP

Xtriage's analysis on translational NCS is as follows: *The largest off-origin peak in the Patterson function is 5.09% of the height of the origin peak. No significant pseudotranslation is detected.*

¹Intensities estimated from amplitudes.

²Theoretical values of $\langle |L| \rangle$, $\langle L^2 \rangle$ for acentric reflections are 0.5, 0.333 respectively for untwinned datasets, and 0.375, 0.2 for perfectly twinned datasets.

5 Model quality

5.1 Standard geometry

Bond lengths and bond angles in the following residue types are not validated in this section: ZN, PEG, VWS

The Z score for a bond length (or angle) is the number of standard deviations the observed value is removed from the expected value. A bond length (or angle) with $|Z| > 5$ is considered an outlier worth inspection. RMSZ is the root-mean-square of all Z scores of the bond lengths (or angles).

Mol	Chain	Bond lengths		Bond angles	
		RMSZ	# $ Z > 5$	RMSZ	# $ Z > 5$
1	A	0.50	0/4988	0.66	0/6748

There are no bond length outliers.

There are no bond angle outliers.

There are no chirality outliers.

There are no planarity outliers.

5.2 Too-close contacts

In the following table, the Non-H and H(model) columns list the number of non-hydrogen atoms and hydrogen atoms in the chain respectively. The H(added) column lists the number of hydrogen atoms added and optimized by MolProbity. The Clashes column lists the number of clashes within the asymmetric unit, whereas Symm-Clashes lists symmetry related clashes.

Mol	Chain	Non-H	H(model)	H(added)	Clashes	Symm-Clashes
1	A	4853	0	4758	25	0
2	A	2	0	0	0	0
3	A	48	0	22	2	0
4	A	7	0	10	0	0
5	A	432	0	0	3	0
All	All	5342	0	4790	25	0

The all-atom clashscore is defined as the number of clashes found per 1000 atoms (including hydrogen atoms). The all-atom clashscore for this structure is 3.

All (25) close contacts within the same asymmetric unit are listed below, sorted by their clash magnitude.

Atom-1	Atom-2	Interatomic distance (Å)	Clash overlap (Å)
1:A:802:GLN:HE21	1:A:802:GLN:H	1.32	0.78
1:A:399:THR:HG23	1:A:425:VAL:HG13	1.80	0.62
1:A:385:GLY:HA3	1:A:555:GLN:HE22	1.66	0.59
1:A:572:TYR:OH	1:A:603:VAL:O	2.19	0.58
1:A:716:LEU:HD21	1:A:839:LEU:HD23	1.88	0.55
1:A:368:GLY:O	1:A:372:VAL:HG23	2.09	0.53
1:A:378:GLU:HG2	5:A:1437:HOH:O	2.12	0.50
1:A:481:ARG:HG3	1:A:603:VAL:HG23	1.95	0.49
1:A:311:LYS:HG2	1:A:312:ALA:H	1.79	0.48
1:A:795:TRP:HZ3	3:A:1003:VWS:H5	1.62	0.47
1:A:467:ALA:H	1:A:580:GLN:NE2	2.12	0.47
1:A:701:HIS:HE1	5:A:1243:HOH:O	1.97	0.46
1:A:583:THR:HB	1:A:584:PRO:HD2	1.98	0.45
1:A:389:ARG:NH2	5:A:1528:HOH:O	2.49	0.45
1:A:336:MET:HB3	1:A:732:ASP:HB3	1.99	0.45
1:A:613:ASN:O	1:A:617:GLN:HG2	2.19	0.43
1:A:340:MET:HB3	1:A:740:ILE:HD11	2.00	0.43
1:A:543:GLU:CG	1:A:596:ASP:HB3	2.49	0.43
1:A:467:ALA:H	1:A:580:GLN:HE22	1.67	0.42
1:A:549:GLU:HB3	1:A:608:LEU:HD22	2.01	0.42
1:A:372:VAL:HG11	1:A:628:LEU:HD11	2.03	0.41
1:A:451:TYR:OH	1:A:599:GLY:HA2	2.21	0.41
1:A:399:THR:HG23	1:A:425:VAL:CG1	2.50	0.40
1:A:543:GLU:HG3	1:A:596:ASP:HB3	2.03	0.40
1:A:601:GLY:HA2	3:A:1003:VWS:H12	2.03	0.40

There are no symmetry-related clashes.

5.3 Torsion angles ⓘ

5.3.1 Protein backbone ⓘ

In the following table, the Percentiles column shows the percent Ramachandran outliers of the chain as a percentile score with respect to all X-ray entries followed by that with respect to entries of similar resolution.

The Analysed column shows the number of residues for which the backbone conformation was analysed, and the total number of residues.

Mol	Chain	Analysed	Favoured	Allowed	Outliers	Percentiles
1	A	589/635 (93%)	576 (98%)	12 (2%)	1 (0%)	51 52

All (1) Ramachandran outliers are listed below:

Mol	Chain	Res	Type
1	A	791	SER

5.3.2 Protein sidechains ⓘ

In the following table, the Percentiles column shows the percent sidechain outliers of the chain as a percentile score with respect to all X-ray entries followed by that with respect to entries of similar resolution.

The Analysed column shows the number of residues for which the sidechain conformation was analysed, and the total number of residues.

Mol	Chain	Analysed	Rotameric	Outliers	Percentiles	
1	A	519/552 (94%)	498 (96%)	21 (4%)	36	36

All (21) residues with a non-rotameric sidechain are listed below:

Mol	Chain	Res	Type
1	A	310	VAL
1	A	326	LEU
1	A	342	MET
1	A	352	ARG
1	A	355	LYS
1	A	364	ARG
1	A	389	ARG
1	A	391	ARG
1	A	425	VAL
1	A	426	GLU
1	A	443	LEU
1	A	470	SER
1	A	471	ARG
1	A	481	ARG
1	A	488	LEU
1	A	533	ASP
1	A	559	GLU
1	A	593	SER
1	A	741	SER
1	A	802	GLN
1	A	863	ILE

Some sidechains can be flipped to improve hydrogen bonding and reduce clashes. All (13) such sidechains are listed below:

Mol	Chain	Res	Type
1	A	339	GLN
1	A	416	ASN
1	A	548	ASN
1	A	555	GLN
1	A	580	GLN
1	A	682	ASN
1	A	693	GLN
1	A	704	GLN
1	A	760	GLN
1	A	768	HIS
1	A	802	GLN
1	A	835	ASN
1	A	869	GLN

5.3.3 RNA [i](#)

There are no RNA molecules in this entry.

5.4 Non-standard residues in protein, DNA, RNA chains [i](#)

There are no non-standard protein/DNA/RNA residues in this entry.

5.5 Carbohydrates [i](#)

There are no carbohydrates in this entry.

5.6 Ligand geometry [i](#)

Of 5 ligands modelled in this entry, 2 are monoatomic - leaving 3 for Mogul analysis.

In the following table, the Counts columns list the number of bonds (or angles) for which Mogul statistics could be retrieved, the number of bonds (or angles) that are observed in the model and the number of bonds (or angles) that are defined in the chemical component dictionary. The Link column lists molecule types, if any, to which the group is linked. The Z score for a bond length (or angle) is the number of standard deviations the observed value is removed from the expected value. A bond length (or angle) with $|Z| > 2$ is considered an outlier worth inspection. RMSZ is the root-mean-square of all Z scores of the bond lengths (or angles).

Mol	Type	Chain	Res	Link	Bond lengths			Bond angles		
					Counts	RMSZ	$\# Z > 2$	Counts	RMSZ	$\# Z > 2$
3	VWS	A	1003	-	18,26,26	3.24	10 (55%)	22,39,39	6.67	13 (59%)

Mol	Type	Chain	Res	Link	Bond lengths			Bond angles		
					Counts	RMSZ	# Z > 2	Counts	RMSZ	# Z > 2
3	VWS	A	1004	-	18,26,26	3.07	12 (66%)	22,39,39	5.95	13 (59%)
4	PEG	A	1005	-	6,6,6	0.61	0	5,5,5	0.66	0

In the following table, the Chirals column lists the number of chiral outliers, the number of chiral centers analysed, the number of these observed in the model and the number defined in the chemical component dictionary. Similar counts are reported in the Torsion and Rings columns. '-' means no outliers of that kind were identified.

Mol	Type	Chain	Res	Link	Chirals	Torsions	Rings
3	VWS	A	1003	-	-	0/11/15/15	0/2/3/3
3	VWS	A	1004	-	-	0/11/15/15	0/2/3/3
4	PEG	A	1005	-	-	0/4/4/4	0/0/0/0

All (22) bond length outliers are listed below:

Mol	Chain	Res	Type	Atoms	Z	Observed(Å)	Ideal(Å)
3	A	1003	VWS	C1-S1	-9.87	1.62	1.76
3	A	1004	VWS	C1-S1	-6.00	1.67	1.76
3	A	1003	VWS	C12-N1	-3.49	1.37	1.43
3	A	1004	VWS	C12-N1	-2.28	1.39	1.43
3	A	1004	VWS	O2-S1	2.04	1.45	1.43
3	A	1003	VWS	C6-C2	2.15	1.42	1.38
3	A	1003	VWS	C7-C12	2.26	1.43	1.39
3	A	1004	VWS	C3-C1	2.30	1.42	1.38
3	A	1004	VWS	C6-C2	2.36	1.43	1.38
3	A	1003	VWS	O2-S1	2.44	1.46	1.43
3	A	1003	VWS	C6-C5	2.49	1.42	1.38
3	A	1004	VWS	C7-C12	2.69	1.43	1.39
3	A	1004	VWS	C5-CL1	2.85	1.80	1.74
3	A	1003	VWS	C8-C7	2.91	1.42	1.36
3	A	1004	VWS	C11-C12	2.99	1.44	1.37
3	A	1003	VWS	C11-C12	3.02	1.44	1.37
3	A	1004	VWS	C8-C7	3.08	1.43	1.36
3	A	1003	VWS	C16-C14	3.23	1.52	1.48
3	A	1004	VWS	C6-C5	3.36	1.44	1.38
3	A	1003	VWS	C2-C1	4.23	1.45	1.38
3	A	1004	VWS	C2-C1	4.29	1.45	1.38
3	A	1004	VWS	O1-S1	6.30	1.50	1.43

All (26) bond angle outliers are listed below:

Mol	Chain	Res	Type	Atoms	Z	Observed(°)	Ideal(°)
3	A	1003	VWS	O2-S1-O1	-24.86	87.75	119.55
3	A	1004	VWS	O2-S1-O1	-19.65	94.41	119.55
3	A	1004	VWS	O2-S1-N1	-8.33	85.54	106.74
3	A	1004	VWS	O2-S1-C1	-7.65	98.49	107.95
3	A	1003	VWS	O2-S1-C1	-6.13	100.37	107.95
3	A	1003	VWS	O2-S1-N1	-5.67	92.32	106.74
3	A	1003	VWS	C3-C1-S1	-4.54	114.76	119.77
3	A	1003	VWS	C4-C5-CL1	-3.80	113.36	119.35
3	A	1004	VWS	C3-C1-S1	-2.82	116.65	119.77
3	A	1004	VWS	C2-C1-C3	-2.52	116.83	120.43
3	A	1003	VWS	C13-C10-C9	-2.41	103.81	107.76
3	A	1004	VWS	C13-C10-C9	-2.27	104.04	107.76
3	A	1004	VWS	C4-C5-CL1	-2.02	116.17	119.35
3	A	1004	VWS	C6-C5-CL1	2.29	122.96	119.35
3	A	1003	VWS	C4-C3-C1	2.33	121.98	119.46
3	A	1003	VWS	C12-N1-S1	2.69	131.76	123.30
3	A	1003	VWS	C6-C5-CL1	3.27	124.51	119.35
3	A	1004	VWS	O1-S1-C1	4.29	113.26	107.95
3	A	1004	VWS	C4-C3-C1	4.59	124.43	119.46
3	A	1003	VWS	C1-S1-N1	5.80	114.28	106.83
3	A	1003	VWS	C2-C1-S1	6.06	126.46	119.77
3	A	1004	VWS	C2-C1-S1	6.10	126.51	119.77
3	A	1003	VWS	O1-S1-N1	6.84	124.15	106.74
3	A	1004	VWS	O1-S1-N1	7.89	126.83	106.74
3	A	1004	VWS	C1-S1-N1	9.72	119.31	106.83
3	A	1003	VWS	O1-S1-C1	10.22	120.59	107.95

There are no chirality outliers.

There are no torsion outliers.

There are no ring outliers.

1 monomer is involved in 2 short contacts:

Mol	Chain	Res	Type	Clashes	Symm-Clashes
3	A	1003	VWS	2	0

5.7 Other polymers ⓘ

There are no such residues in this entry.

5.8 Polymer linkage issues ⓘ

There are no chain breaks in this entry.

6 Fit of model and data ⓘ

6.1 Protein, DNA and RNA chains ⓘ

In the following table, the column labelled ‘#RSRZ> 2’ contains the number (and percentage) of RSRZ outliers, followed by percent RSRZ outliers for the chain as percentile scores relative to all X-ray entries and entries of similar resolution. The OWAB column contains the minimum, median, 95th percentile and maximum values of the occupancy-weighted average B-factor per residue. The column labelled ‘Q< 0.9’ lists the number of (and percentage) of residues with an average occupancy less than 0.9.

Mol	Chain	Analysed	<RSRZ>	#RSRZ>2	OWAB(Å ²)	Q<0.9
1	A	592/635 (93%)	0.12	43 (7%) 16 20	23, 42, 85, 124	0

All (43) RSRZ outliers are listed below:

Mol	Chain	Res	Type	RSRZ
1	A	343	THR	8.6
1	A	418	TRP	8.3
1	A	353	VAL	8.1
1	A	351	GLN	6.8
1	A	410	ALA	5.5
1	A	743	GLY	5.0
1	A	342	MET	4.7
1	A	318	SER	4.6
1	A	312	ALA	4.4
1	A	746	TRP	4.0
1	A	313	THR	3.9
1	A	585	THR	3.6
1	A	417	GLN	3.6
1	A	745	GLY	3.5
1	A	272	ASN	3.3
1	A	407	ALA	3.3
1	A	583	THR	3.3
1	A	854	THR	3.3
1	A	468	LYS	3.2
1	A	409	GLY	3.2
1	A	454	MET	3.0
1	A	413	THR	3.0
1	A	744	ALA	3.0
1	A	341	ALA	2.9
1	A	480	VAL	2.9
1	A	860	ALA	2.8
1	A	586	GLY	2.8

Continued on next page...

Continued from previous page...

Mol	Chain	Res	Type	RSRZ
1	A	419	ASP	2.7
1	A	861	GLN	2.6
1	A	352	ARG	2.6
1	A	469	GLY	2.6
1	A	742	GLN	2.6
1	A	584	PRO	2.5
1	A	416	ASN	2.4
1	A	467	ALA	2.4
1	A	293	TYR	2.4
1	A	333	VAL	2.3
1	A	852	GLY	2.3
1	A	571	THR	2.2
1	A	406	ALA	2.2
1	A	288	ASN	2.2
1	A	319	MET	2.0
1	A	851	ILE	2.0

6.2 Non-standard residues in protein, DNA, RNA chains [i](#)

There are no non-standard protein/DNA/RNA residues in this entry.

6.3 Carbohydrates [i](#)

There are no carbohydrates in this entry.

6.4 Ligands [i](#)

In the following table, the Atoms column lists the number of modelled atoms in the group and the number defined in the chemical component dictionary. LLDF column lists the quality of electron density of the group with respect to its neighbouring residues in protein, DNA or RNA chains. The B-factors column lists the minimum, median, 95th percentile and maximum values of B factors of atoms in the group. The column labelled 'Q< 0.9' lists the number of atoms with occupancy less than 0.9.

Mol	Type	Chain	Res	Atoms	RSCC	RSR	LLDF	B-factors(Å ²)	Q<0.9
3	VWS	A	1004	24/24	0.84	0.18	0.72	61,87,90,91	0
3	VWS	A	1003	24/24	0.89	0.19	0.53	63,74,87,88	0
2	ZN	A	1002	1/1	1.00	0.08	-1.26	39,39,39,39	0
2	ZN	A	1001	1/1	1.00	0.03	-3.38	49,49,49,49	0
4	PEG	A	1005	7/7	0.92	0.10	-	47,48,54,56	0

6.5 Other polymers [i](#)

There are no such residues in this entry.