



Full wwPDB X-ray Structure Validation Report ⓘ

Feb 14, 2017 – 04:24 pm GMT

PDB ID : 1W1K
Title : STRUCTURE OF THE OCTAMERIC FLAVOENZYME VANILLYL-ALCOHOL OXIDASE: ILE238THR MUTANT
Authors : Van Den Heuvel, R.H.
Deposited on : 2004-06-22
Resolution : 2.55 Å(reported)

This is a Full wwPDB X-ray Structure Validation Report for a publicly released PDB entry.

We welcome your comments at validation@mail.wwpdb.org

A user guide is available at

<http://wwpdb.org/validation/2016/XrayValidationReportHelp>

with specific help available everywhere you see the ⓘ symbol.

The following versions of software and data (see [references ⓘ](#)) were used in the production of this report:

MolProbity	:	4.02b-467
Mogul	:	1.7.2 (RC1), CSD as538be (2017)
Xtriage (Phenix)	:	1.9-1692
EDS	:	trunk28620
Percentile statistics	:	20161228.v01 (using entries in the PDB archive December 28th 2016)
Refmac	:	5.8.0135
CCP4	:	6.5.0
Ideal geometry (proteins)	:	Engh & Huber (2001)
Ideal geometry (DNA, RNA)	:	Parkinson et al. (1996)
Validation Pipeline (wwPDB-VP)	:	recalc28949

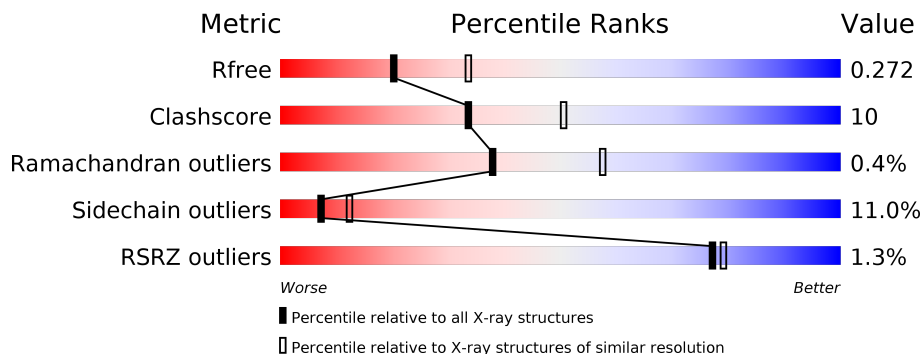
1 Overall quality at a glance

The following experimental techniques were used to determine the structure:

X-RAY DIFFRACTION

The reported resolution of this entry is 2.55 Å.

Percentile scores (ranging between 0-100) for global validation metrics of the entry are shown in the following graphic. The table shows the number of entries on which the scores are based.



Metric	Whole archive (#Entries)	Similar resolution (#Entries, resolution range(Å))
R_{free}	100719	4993 (2.58-2.50)
Clashscore	112137	5755 (2.58-2.50)
Ramachandran outliers	110173	5652 (2.58-2.50)
Sidechain outliers	110143	5654 (2.58-2.50)
RSRZ outliers	101464	5026 (2.58-2.50)

The table below summarises the geometric issues observed across the polymeric chains and their fit to the electron density. The red, orange, yellow and green segments on the lower bar indicate the fraction of residues that contain outliers for ≥ 3 , 2, 1 and 0 types of geometric quality criteria. A grey segment represents the fraction of residues that are not modelled. The numeric value for each fraction is indicated below the corresponding segment, with a dot representing fractions $\leq 5\%$. The upper red bar (where present) indicates the fraction of residues that have poor fit to the electron density. The numeric value is given above the bar.

Mol	Chain	Length	Quality of chain
1	A	560	<div> <div>%</div> <div> <div></div> <div>72%</div> <div>22%</div> <div>• •</div> </div> </div>
1	B	560	<div> <div>%</div> <div> <div></div> <div>70%</div> <div>23%</div> <div>• •</div> </div> </div>

The following table lists non-polymeric compounds, carbohydrate monomers and non-standard residues in protein, DNA, RNA chains that are outliers for geometric or electron-density-fit criteria:

Mol	Type	Chain	Res	Chirality	Geometry	Clashes	Electron density
3	EUG	A	1562	-	-	-	X

2 Entry composition [i](#)

There are 3 unique types of molecules in this entry. The entry contains 8828 atoms, of which 0 are hydrogens and 0 are deuteriums.

In the tables below, the ZeroOcc column contains the number of atoms modelled with zero occupancy, the AltConf column contains the number of residues with at least one atom in alternate conformation and the Trace column contains the number of residues modelled with at most 2 atoms.

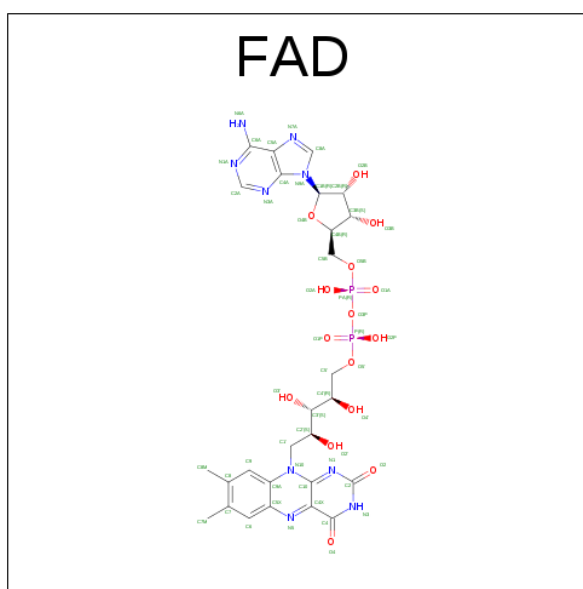
- Molecule 1 is a protein called VANILLYL-ALCOHOL OXIDASE.

Mol	Chain	Residues	Atoms					ZeroOcc	AltConf	Trace
1	A	550	Total	C	N	O	S	0	0	0
			4350	2791	744	791	24			
1	B	550	Total	C	N	O	S	0	0	0
			4350	2791	744	791	24			

There are 2 discrepancies between the modelled and reference sequences:

Chain	Residue	Modelled	Actual	Comment	Reference
A	238	THR	ILE	ENGINEERED MUTATION	UNP P56216
B	238	THR	ILE	ENGINEERED MUTATION	UNP P56216

- Molecule 2 is FLAVIN-ADENINE DINUCLEOTIDE (three-letter code: FAD) (formula: $C_{27}H_{33}N_9O_{15}P_2$).



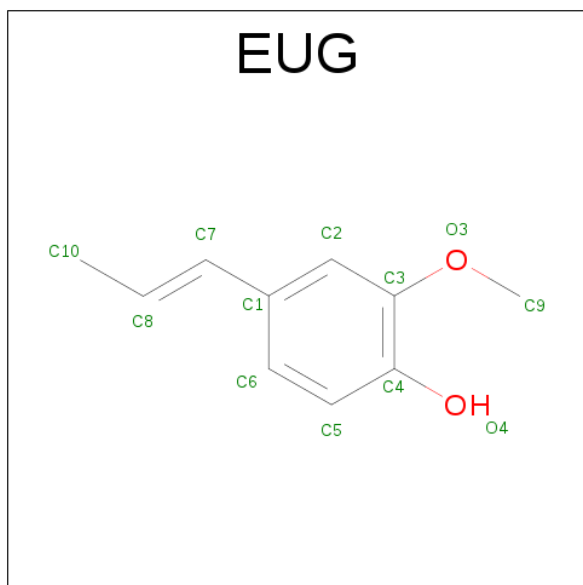
Mol	Chain	Residues	Atoms					ZeroOcc	AltConf
2	A	1	Total	C	N	O	P	0	0
			53	27	9	15	2		

Continued on next page...

Continued from previous page...

Mol	Chain	Residues	Atoms					ZeroOcc	AltConf
2	B	1	Total	C	N	O	P	0	0
			53	27	9	15	2		

- Molecule 3 is 2-METHOXY-4-VINYL-PHENOL (three-letter code: EUG) (formula: $C_{10}H_{12}O_2$).

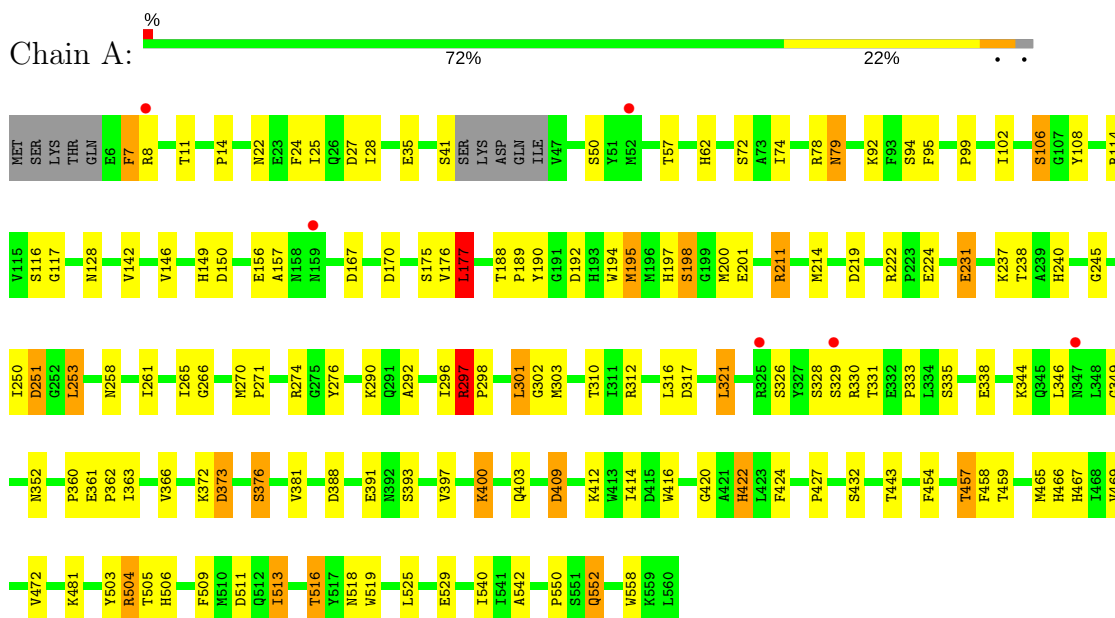


Mol	Chain	Residues	Atoms			ZeroOcc	AltConf
3	A	1	Total	C	O	0	0
			11	9	2		
3	B	1	Total	C	O	0	0
			11	9	2		

3 Residue-property plots

These plots are drawn for all protein, RNA and DNA chains in the entry. The first graphic for a chain summarises the proportions of the various outlier classes displayed in the second graphic. The second graphic shows the sequence view annotated by issues in geometry and electron density. Residues are color-coded according to the number of geometric quality criteria for which they contain at least one outlier: green = 0, yellow = 1, orange = 2 and red = 3 or more. A red dot above a residue indicates a poor fit to the electron density ($RSRZ > 2$). Stretches of 2 or more consecutive residues without any outlier are shown as a green connector. Residues present in the sample, but not in the model, are shown in grey.

• Molecule 1: VANILLYL-ALCOHOL OXIDASE



• Molecule 1: VANILLYL-ALCOHOL OXIDASE



4 Data and refinement statistics

Property	Value	Source
Space group	I 4	Depositor
Cell constants a, b, c, α , β , γ	129.90Å 129.90Å 133.38Å 90.00° 90.00° 90.00°	Depositor
Resolution (Å)	40.00 – 2.55 42.07 – 2.55	Depositor EDS
% Data completeness (in resolution range)	98.9 (40.00-2.55) 98.9 (42.07-2.55)	Depositor EDS
R_{merge}	0.10	Depositor
R_{sym}	(Not available)	Depositor
$\langle I/\sigma(I) \rangle$ ¹	1.82 (at 2.54Å)	Xtriage
Refinement program	REFMAC 5.1.27	Depositor
R, R_{free}	0.207 , 0.272 0.208 , 0.272	Depositor DCC
R_{free} test set	1778 reflections (5.25%)	DCC
Wilson B-factor (Å ²)	40.8	Xtriage
Anisotropy	0.491	Xtriage
Bulk solvent k_{sol} (e/Å ³), B_{sol} (Å ²)	0.34 , 22.5	EDS
L-test for twinning ²	$\langle L \rangle = 0.48$, $\langle L^2 \rangle = 0.31$	Xtriage
Estimated twinning fraction	0.010 for l,-k,h 0.024 for -l,-k,-h 0.025 for -h,-l,-k 0.011 for -h,l,k 0.041 for -h,k,-l	Xtriage
F_o, F_c correlation	0.93	EDS
Total number of atoms	8828	wwPDB-VP
Average B, all atoms (Å ²)	46.0	wwPDB-VP

Xtriage's analysis on translational NCS is as follows: *The largest off-origin peak in the Patterson function is 3.53% of the height of the origin peak. No significant pseudotranslation is detected.*

¹Intensities estimated from amplitudes.

²Theoretical values of $\langle |L| \rangle$, $\langle L^2 \rangle$ for acentric reflections are 0.5, 0.333 respectively for untwinned datasets, and 0.375, 0.2 for perfectly twinned datasets.

5 Model quality

5.1 Standard geometry

Bond lengths and bond angles in the following residue types are not validated in this section: EUG, FAD

The Z score for a bond length (or angle) is the number of standard deviations the observed value is removed from the expected value. A bond length (or angle) with $|Z| > 5$ is considered an outlier worth inspection. RMSZ is the root-mean-square of all Z scores of the bond lengths (or angles).

Mol	Chain	Bond lengths		Bond angles	
		RMSZ	$\# Z > 5$	RMSZ	$\# Z > 5$
1	A	0.70	0/4469	0.88	11/6074 (0.2%)
1	B	0.55	0/4469	0.82	17/6074 (0.3%)
All	All	0.63	0/8938	0.85	28/12148 (0.2%)

Chiral center outliers are detected by calculating the chiral volume of a chiral center and verifying if the center is modelled as a planar moiety or with the opposite hand. A planarity outlier is detected by checking planarity of atoms in a peptide group, atoms in a mainchain group or atoms of a sidechain that are expected to be planar.

Mol	Chain	#Chirality outliers	#Planarity outliers
1	B	0	1

There are no bond length outliers.

All (28) bond angle outliers are listed below:

Mol	Chain	Res	Type	Atoms	Z	Observed(°)	Ideal(°)
1	A	251	ASP	CB-CG-OD2	7.32	124.89	118.30
1	B	177	LEU	CA-CB-CG	6.65	130.60	115.30
1	B	399	ASP	CB-CG-OD2	6.60	124.24	118.30
1	A	150	ASP	CB-CG-OD2	6.43	124.09	118.30
1	B	288	ASP	CB-CG-OD2	6.30	123.97	118.30
1	A	177	LEU	CA-CB-CG	6.14	129.42	115.30
1	B	435	ASP	CB-CG-OD2	6.12	123.81	118.30
1	A	167	ASP	CB-CG-OD2	5.95	123.66	118.30
1	A	192	ASP	CB-CG-OD2	5.94	123.65	118.30
1	A	170	ASP	CB-CG-OD2	5.88	123.59	118.30
1	B	477	ASP	CB-CG-OD2	5.85	123.56	118.30
1	B	251	ASP	CB-CG-OD2	5.83	123.55	118.30
1	B	388	ASP	CB-CG-OD2	5.71	123.44	118.30
1	B	409	ASP	CB-CG-OD2	5.70	123.43	118.30

Continued on next page...

Continued from previous page...

Mol	Chain	Res	Type	Atoms	Z	Observed(°)	Ideal(°)
1	B	317	ASP	CB-CG-OD2	5.67	123.40	118.30
1	A	373	ASP	CB-CG-OD2	5.53	123.28	118.30
1	A	409	ASP	CB-CG-OD2	5.40	123.16	118.30
1	B	495	CYS	CA-CB-SG	-5.35	104.37	114.00
1	A	388	ASP	CB-CG-OD2	5.29	123.06	118.30
1	A	317	ASP	CB-CG-OD2	5.27	123.04	118.30
1	B	27	ASP	CB-CG-OD2	5.27	123.04	118.30
1	B	150	ASP	CB-CG-OD2	5.23	123.01	118.30
1	B	286	ASP	CB-CG-OD2	5.20	122.98	118.30
1	B	336	ASP	CB-CG-OD2	5.17	122.95	118.30
1	B	219	ASP	CB-CG-OD2	5.04	122.83	118.30
1	A	219	ASP	CB-CG-OD2	5.01	122.81	118.30
1	B	20	ASP	CB-CG-OD2	5.01	122.81	118.30
1	B	232	ASP	CB-CG-OD2	5.01	122.81	118.30

There are no chirality outliers.

All (1) planarity outliers are listed below:

Mol	Chain	Res	Type	Group
1	B	127	MET	Peptide

5.2 Too-close contacts

In the following table, the Non-H and H(model) columns list the number of non-hydrogen atoms and hydrogen atoms in the chain respectively. The H(added) column lists the number of hydrogen atoms added and optimized by MolProbity. The Clashes column lists the number of clashes within the asymmetric unit, whereas Symm-Clashes lists symmetry related clashes.

Mol	Chain	Non-H	H(model)	H(added)	Clashes	Symm-Clashes
1	A	4350	0	4284	84	1
1	B	4350	0	4284	89	1
2	A	53	0	30	1	0
2	B	53	0	30	2	0
3	A	11	0	7	0	0
3	B	11	0	7	1	0
All	All	8828	0	8642	169	1

The all-atom clashscore is defined as the number of clashes found per 1000 atoms (including hydrogen atoms). The all-atom clashscore for this structure is 10.

All (169) close contacts within the same asymmetric unit are listed below, sorted by their clash magnitude.

Atom-1	Atom-2	Interatomic distance (Å)	Clash overlap (Å)
2:A:1561:FAD:H51A	2:A:1561:FAD:H8A	1.49	0.94
1:B:505:THR:HG21	1:B:513:ILE:HD13	1.50	0.93
1:A:349:GLY:H	1:A:352:ASN:HD21	1.13	0.92
1:B:106:SER:HB3	1:B:422:HIS:HE1	1.40	0.85
1:B:505:THR:HG21	1:B:513:ILE:CD1	2.08	0.82
1:B:513:ILE:O	1:B:516:THR:HB	1.79	0.82
1:A:330:ARG:NH1	1:A:338:GLU:OE1	2.17	0.78
1:A:330:ARG:NH2	1:A:333:PRO:O	2.16	0.78
1:A:443:THR:HG21	1:A:469:VAL:HG21	1.68	0.75
1:A:550:PRO:HB2	1:A:552:GLN:HE21	1.51	0.74
1:B:550:PRO:HB2	1:B:552:GLN:NE2	2.03	0.73
1:A:292:ALA:O	1:A:296:ILE:HG13	1.88	0.73
1:B:349:GLY:H	1:B:352:ASN:HD21	1.38	0.72
1:B:443:THR:HG21	1:B:469:VAL:HG21	1.70	0.72
1:A:194:TRP:O	1:A:197:HIS:HD2	1.74	0.70
1:B:505:THR:CG2	1:B:513:ILE:HD13	2.22	0.69
1:A:519:TRP:CZ3	1:B:211:ARG:HG2	2.27	0.69
1:B:114:ARG:NH2	1:B:511:ASP:OD2	2.23	0.68
1:A:297:ARG:HB3	1:A:298:PRO:HD3	1.76	0.67
1:B:297:ARG:HB3	1:B:298:PRO:CD	2.25	0.67
1:A:550:PRO:HB2	1:A:552:GLN:NE2	2.09	0.66
1:A:349:GLY:N	1:A:352:ASN:HD21	1.92	0.66
1:A:525:LEU:O	1:A:529:GLU:HG3	1.96	0.65
1:B:550:PRO:HB2	1:B:552:GLN:HE22	1.62	0.64
1:B:79:ASN:HD22	1:B:79:ASN:C	1.98	0.64
1:B:275:GLY:HA3	1:B:359:GLY:O	1.98	0.64
1:B:438:MET:HG2	1:B:500:TRP:HH2	1.64	0.63
1:A:297:ARG:HB3	1:A:298:PRO:CD	2.29	0.62
1:B:312:ARG:HG2	1:B:457:THR:HG23	1.80	0.62
1:A:106:SER:HB2	1:A:422:HIS:HE1	1.64	0.62
1:B:106:SER:HB3	1:B:422:HIS:CE1	2.30	0.62
1:A:211:ARG:HG2	1:B:519:TRP:CZ3	2.36	0.61
1:A:552:GLN:NE2	1:A:552:GLN:H	1.99	0.61
1:B:297:ARG:HB3	1:B:298:PRO:HD3	1.83	0.60
1:A:198:SER:HB3	1:A:240:HIS:HA	1.84	0.60
1:A:114:ARG:NH2	1:A:511:ASP:OD2	2.31	0.59
1:A:310:THR:HB	1:A:457:THR:HG21	1.85	0.59
1:B:197:HIS:HE1	1:B:251:ASP:OD2	1.86	0.58
1:A:250:ILE:O	1:A:253:LEU:HB2	2.04	0.58
1:A:72:SER:HB3	1:A:117:GLY:HA2	1.86	0.57
1:B:443:THR:HA	1:B:491:LEU:HD21	1.87	0.57
1:B:413:TRP:CZ2	2:B:1561:FAD:HM72	2.40	0.57

Continued on next page...

Continued from previous page...

Atom-1	Atom-2	Interatomic distance (Å)	Clash overlap (Å)
1:A:222:ARG:HD2	1:A:224:GLU:OE1	2.06	0.56
1:A:24:PHE:O	1:A:27:ASP:HB2	2.05	0.56
1:B:332:GLU:HB3	1:B:333:PRO:CD	2.35	0.56
1:A:504:ARG:O	1:A:505:THR:HG23	2.06	0.56
1:A:79:ASN:HD22	1:A:79:ASN:C	2.10	0.55
1:A:99:PRO:HG3	1:A:261:ILE:HG12	1.89	0.54
1:A:349:GLY:H	1:A:352:ASN:ND2	1.95	0.54
1:B:100:ILE:O	1:B:123:MET:HB2	2.08	0.54
1:B:201:GLU:HB3	1:B:264:LYS:HB2	1.89	0.53
1:A:11:THR:HG21	1:A:116:SER:HB3	1.91	0.52
1:A:393:SER:O	1:A:397:VAL:HG23	2.10	0.52
1:A:57:THR:HG22	1:A:74:ILE:HD11	1.89	0.52
1:B:40:ILE:HD11	1:B:74:ILE:HD12	1.91	0.52
1:B:312:ARG:HG2	1:B:316:LEU:HD23	1.92	0.52
1:B:297:ARG:HH11	1:B:298:PRO:HD3	1.75	0.52
1:A:146:VAL:O	1:A:176:VAL:HG23	2.10	0.51
1:B:57:THR:HG22	1:B:74:ILE:HD11	1.92	0.51
1:A:330:ARG:CZ	1:A:333:PRO:O	2.58	0.51
1:A:427:PRO:HD2	1:A:467:HIS:O	2.11	0.51
1:A:550:PRO:CB	1:A:552:GLN:NE2	2.73	0.51
1:B:214:MET:HE2	1:B:245:GLY:HA2	1.91	0.51
1:B:190:TYR:CE1	1:B:270:MET:HB2	2.46	0.51
1:A:416:TRP:HB3	1:A:472:VAL:HG21	1.93	0.51
1:B:102:ILE:HG12	1:B:175:SER:HB2	1.91	0.51
1:B:214:MET:HG3	1:B:238:THR:HG22	1.92	0.51
1:B:552:GLN:NE2	1:B:552:GLN:H	2.09	0.51
1:B:156:GLU:OE2	1:B:161:ARG:HD2	2.10	0.50
1:A:454:PHE:C	1:A:454:PHE:CD2	2.84	0.50
1:B:229:LYS:HD2	1:B:231:GLU:OE2	2.11	0.50
1:A:372:LYS:O	1:A:376:SER:OG	2.29	0.50
1:A:516:THR:HG23	1:B:217:LEU:CD2	2.41	0.50
1:B:282:THR:HG22	1:B:352:ASN:HD22	1.76	0.50
1:B:414:ILE:HD11	2:B:1561:FAD:HM71	1.93	0.50
1:A:312:ARG:HG2	1:A:316:LEU:HD23	1.94	0.50
1:A:397:VAL:O	1:A:400:LYS:HB2	2.12	0.49
1:A:459:THR:OG1	1:A:466:HIS:HB2	2.13	0.49
1:B:261:ILE:HD11	1:B:541:ILE:HD12	1.94	0.49
1:B:468:ILE:HD11	3:B:1562:EUG:H93	1.93	0.49
1:B:400:LYS:HB3	1:B:405:ILE:HB	1.94	0.49
1:A:156:GLU:O	1:A:157:ALA:C	2.52	0.49
1:B:177:LEU:HB2	1:B:265:ILE:CG2	2.43	0.48

Continued on next page...

Continued from previous page...

Atom-1	Atom-2	Interatomic distance (Å)	Clash overlap (Å)
1:A:258:ASN:CB	1:A:542:ALA:HB3	2.43	0.48
1:A:102:ILE:HG12	1:A:175:SER:HB2	1.95	0.48
1:A:362:PRO:O	1:A:366:VAL:HG23	2.13	0.48
1:A:505:THR:OG1	1:A:513:ILE:HD13	2.14	0.48
1:B:177:LEU:HB2	1:B:265:ILE:HG22	1.94	0.48
1:A:310:THR:HB	1:A:457:THR:CG2	2.43	0.47
1:B:114:ARG:NH2	1:B:560:LEU:HD12	2.29	0.47
1:A:328:SER:OG	1:A:330:ARG:HB2	2.14	0.47
1:B:532:LYS:HE3	1:B:536:ASP:HB3	1.95	0.47
1:A:106:SER:HB2	1:A:422:HIS:CE1	2.47	0.47
1:A:189:PRO:HG2	1:A:270:MET:CE	2.45	0.47
1:A:108:TYR:CZ	1:A:504:ARG:HG2	2.50	0.47
1:B:63:VAL:HG11	1:B:423:LEU:HD22	1.97	0.47
1:B:297:ARG:NH1	1:B:298:PRO:HD3	2.30	0.46
1:B:341:LYS:HG2	1:B:344:LYS:NZ	2.31	0.46
1:B:133:VAL:HG11	1:B:160:LEU:HD13	1.95	0.46
1:B:398:ARG:HA	1:B:401:THR:HB	1.97	0.46
1:B:312:ARG:HG2	1:B:457:THR:CG2	2.44	0.46
1:A:361:GLU:HB3	1:A:362:PRO:HD3	1.96	0.46
1:B:231:GLU:H	1:B:231:GLU:HG3	1.24	0.46
1:B:201:GLU:OE2	1:B:211:ARG:NH2	2.44	0.46
1:B:161:ARG:O	1:B:161:ARG:HG2	2.14	0.46
1:A:506:HIS:HB3	1:A:509:PHE:HD2	1.80	0.46
1:A:194:TRP:O	1:A:197:HIS:CD2	2.62	0.46
1:A:302:GLY:O	1:A:303:MET:HB2	2.16	0.45
1:A:397:VAL:HG11	1:A:409:ASP:HB2	1.98	0.45
1:A:443:THR:HG21	1:A:469:VAL:CG2	2.42	0.45
1:B:194:TRP:O	1:B:197:HIS:HD2	1.99	0.45
1:B:24:PHE:HD1	1:B:25:ILE:HD12	1.81	0.45
1:A:7:PHE:HA	1:A:22:ASN:OD1	2.16	0.45
1:B:312:ARG:CG	1:B:457:THR:CG2	2.95	0.45
1:B:95:PHE:CE1	1:B:119:VAL:HG23	2.52	0.45
1:A:197:HIS:HA	1:A:266:GLY:O	2.17	0.45
1:B:282:THR:HG22	1:B:352:ASN:ND2	2.32	0.45
1:A:258:ASN:HB2	1:A:542:ALA:HB3	1.98	0.45
1:A:238:THR:HG22	1:A:238:THR:O	2.16	0.45
1:A:518:ASN:O	1:A:519:TRP:C	2.54	0.45
1:B:189:PRO:HG2	1:B:270:MET:HE1	1.99	0.44
1:B:57:THR:HG22	1:B:74:ILE:CD1	2.47	0.44
1:A:513:ILE:O	1:A:516:THR:HB	2.16	0.44
1:B:250:ILE:O	1:B:253:LEU:HB2	2.16	0.44

Continued on next page...

Continued from previous page...

Atom-1	Atom-2	Interatomic distance (Å)	Clash overlap (Å)
1:A:14:PRO:HG3	1:A:558:TRP:CZ2	2.52	0.44
1:B:217:LEU:HD22	1:B:218:PRO:HD2	2.00	0.44
1:B:79:ASN:ND2	1:B:82:ASP:H	2.16	0.44
1:B:82:ASP:O	1:B:86:ILE:HD12	2.16	0.44
1:B:473:PHE:HB3	1:B:484:VAL:HG21	2.00	0.43
1:B:474:ASN:ND2	1:B:477:ASP:HB2	2.33	0.43
1:B:341:LYS:HG2	1:B:344:LYS:HZ3	1.83	0.43
1:B:416:TRP:O	1:B:417:LEU:HD23	2.18	0.43
1:B:8:ARG:HA	1:B:9:PRO:HD3	1.81	0.43
1:A:24:PHE:HD2	1:A:25:ILE:HD12	1.84	0.43
1:A:414:ILE:O	1:A:420:GLY:HA3	2.19	0.43
1:B:107:GLY:HA2	1:B:422:HIS:O	2.19	0.42
1:A:62:HIS:ND1	1:A:481:LYS:NZ	2.61	0.42
1:A:231:GLU:H	1:A:231:GLU:HG3	1.26	0.42
1:A:214:MET:HG2	1:A:245:GLY:HA2	2.00	0.42
1:B:101:SER:O	1:B:124:GLY:HA3	2.19	0.42
1:A:102:ILE:CG1	1:A:175:SER:HB2	2.50	0.42
1:A:297:ARG:O	1:A:301:LEU:HB2	2.19	0.42
1:B:280:LEU:HB3	1:B:395:LEU:HD22	2.00	0.42
1:B:214:MET:CG	1:B:238:THR:HG22	2.49	0.42
1:A:188:THR:C	1:A:190:TYR:H	2.23	0.42
1:B:190:TYR:CD1	1:B:270:MET:HB2	2.55	0.42
1:A:271:PRO:HG2	1:B:301:LEU:HB3	2.01	0.41
1:B:421:ALA:O	1:B:472:VAL:HA	2.20	0.41
1:A:238:THR:CG2	1:A:238:THR:O	2.67	0.41
1:B:177:LEU:C	1:B:177:LEU:HD12	2.40	0.41
1:B:214:MET:HG3	1:B:238:THR:CG2	2.51	0.41
1:A:7:PHE:HB2	1:A:8:ARG:HE	1.85	0.41
1:A:321:LEU:HD12	1:A:346:LEU:HD22	2.03	0.41
1:A:195:MET:CE	1:B:195:MET:CE	2.98	0.41
1:B:143:GLU:HB3	1:B:144:PRO:CD	2.51	0.41
1:B:315:LEU:HD22	1:B:416:TRP:CH2	2.55	0.41
1:B:61:HIS:CE1	1:B:422:HIS:CE1	3.09	0.41
1:A:360:PRO:HB2	1:A:362:PRO:HD2	2.02	0.41
1:B:349:GLY:H	1:B:352:ASN:ND2	2.13	0.41
1:B:425:PHE:CD2	1:B:427:PRO:HD3	2.55	0.41
1:A:108:TYR:CE1	1:A:424:PHE:HB2	2.56	0.41
1:B:126:ASN:O	1:B:128:ASN:HB2	2.19	0.41
1:B:28:ILE:HD13	1:B:86:ILE:HG12	2.02	0.41
1:A:177:LEU:HB2	1:A:265:ILE:CG2	2.50	0.41
1:A:330:ARG:HH12	1:A:335:SER:HB3	1.86	0.40

Continued on next page...

Continued from previous page...

Atom-1	Atom-2	Interatomic distance (Å)	Clash overlap (Å)
1:B:168:VAL:HG22	1:B:404:GLY:HA2	2.03	0.40
1:A:276:TYR:CZ	1:A:403:GLN:HB3	2.56	0.40
1:A:201:GLU:OE2	1:A:211:ARG:HD3	2.22	0.40
1:A:458:PHE:CD1	1:A:465:MET:HE3	2.57	0.40

All (1) symmetry-related close contacts are listed below. The label for Atom-2 includes the symmetry operator and encoded unit-cell translations to be applied.

Atom-1	Atom-2	Interatomic distance (Å)	Clash overlap (Å)
1:A:373:ASP:OD2	1:B:288:ASP:OD1[4_665]	2.07	0.13

5.3 Torsion angles [i](#)

5.3.1 Protein backbone [i](#)

In the following table, the Percentiles column shows the percent Ramachandran outliers of the chain as a percentile score with respect to all X-ray entries followed by that with respect to entries of similar resolution.

The Analysed column shows the number of residues for which the backbone conformation was analysed, and the total number of residues.

Mol	Chain	Analysed	Favoured	Allowed	Outliers	Percentiles	
1	A	546/560 (98%)	515 (94%)	29 (5%)	2 (0%)	38	57
1	B	546/560 (98%)	515 (94%)	29 (5%)	2 (0%)	38	57
All	All	1092/1120 (98%)	1030 (94%)	58 (5%)	4 (0%)	38	57

All (4) Ramachandran outliers are listed below:

Mol	Chain	Res	Type
1	A	274	ARG
1	A	297	ARG
1	B	169	PRO
1	B	418	PRO

5.3.2 Protein sidechains [i](#)

In the following table, the Percentiles column shows the percent sidechain outliers of the chain as a percentile score with respect to all X-ray entries followed by that with respect to entries of similar

resolution.

The Analysed column shows the number of residues for which the sidechain conformation was analysed, and the total number of residues.

Mol	Chain	Analysed	Rotameric	Outliers	Percentiles	
1	A	470/482 (98%)	424 (90%)	46 (10%)	9	16
1	B	470/482 (98%)	413 (88%)	57 (12%)	6	10
All	All	940/964 (98%)	837 (89%)	103 (11%)	7	12

All (103) residues with a non-rotameric sidechain are listed below:

Mol	Chain	Res	Type
1	A	7	PHE
1	A	28	ILE
1	A	35	GLU
1	A	41	SER
1	A	50	SER
1	A	78	ARG
1	A	79	ASN
1	A	92	LYS
1	A	94	SER
1	A	95	PHE
1	A	106	SER
1	A	128	ASN
1	A	142	VAL
1	A	149	HIS
1	A	177	LEU
1	A	195	MET
1	A	198	SER
1	A	200	MET
1	A	211	ARG
1	A	231	GLU
1	A	237	LYS
1	A	251	ASP
1	A	253	LEU
1	A	290	LYS
1	A	297	ARG
1	A	301	LEU
1	A	321	LEU
1	A	326	SER
1	A	329	SER
1	A	331	THR
1	A	344	LYS

Continued on next page...

Continued from previous page...

Mol	Chain	Res	Type
1	A	363	ILE
1	A	376	SER
1	A	381	VAL
1	A	391	GLU
1	A	400	LYS
1	A	412	LYS
1	A	422	HIS
1	A	432	SER
1	A	457	THR
1	A	503	TYR
1	A	504	ARG
1	A	513	ILE
1	A	516	THR
1	A	540	ILE
1	A	552	GLN
1	B	7	PHE
1	B	8	ARG
1	B	18	LEU
1	B	25	ILE
1	B	26	GLN
1	B	41	SER
1	B	52	MET
1	B	53	LYS
1	B	79	ASN
1	B	92	LYS
1	B	95	PHE
1	B	128	ASN
1	B	132	GLU
1	B	142	VAL
1	B	161	ARG
1	B	163	LYS
1	B	168	VAL
1	B	171	LEU
1	B	177	LEU
1	B	195	MET
1	B	211	ARG
1	B	231	GLU
1	B	238	THR
1	B	251	ASP
1	B	283	LEU
1	B	297	ARG
1	B	299	LEU

Continued on next page...

Continued from previous page...

Mol	Chain	Res	Type
1	B	301	LEU
1	B	303	MET
1	B	310	THR
1	B	329	SER
1	B	331	THR
1	B	336	ASP
1	B	341	LYS
1	B	344	LYS
1	B	345	GLN
1	B	365	ARG
1	B	370	THR
1	B	396	ARG
1	B	412	LYS
1	B	422	HIS
1	B	426	SER
1	B	432	SER
1	B	445	LYS
1	B	448	GLN
1	B	452	LEU
1	B	457	THR
1	B	467	HIS
1	B	472	VAL
1	B	478	LEU
1	B	503	TYR
1	B	504	ARG
1	B	505	THR
1	B	513	ILE
1	B	516	THR
1	B	540	ILE
1	B	552	GLN

Some sidechains can be flipped to improve hydrogen bonding and reduce clashes. All (16) such sidechains are listed below:

Mol	Chain	Res	Type
1	A	79	ASN
1	A	128	ASN
1	A	153	ASN
1	A	197	HIS
1	A	240	HIS
1	A	352	ASN
1	A	520	ASN
1	A	552	GLN

Continued on next page...

Continued from previous page...

Mol	Chain	Res	Type
1	B	79	ASN
1	B	128	ASN
1	B	197	HIS
1	B	240	HIS
1	B	352	ASN
1	B	467	HIS
1	B	520	ASN
1	B	552	GLN

5.3.3 RNA [i](#)

There are no RNA molecules in this entry.

5.4 Non-standard residues in protein, DNA, RNA chains [i](#)

There are no non-standard protein/DNA/RNA residues in this entry.

5.5 Carbohydrates [i](#)

There are no carbohydrates in this entry.

5.6 Ligand geometry [i](#)

4 ligands are modelled in this entry.

In the following table, the Counts columns list the number of bonds (or angles) for which Mogul statistics could be retrieved, the number of bonds (or angles) that are observed in the model and the number of bonds (or angles) that are defined in the chemical component dictionary. The Link column lists molecule types, if any, to which the group is linked. The Z score for a bond length (or angle) is the number of standard deviations the observed value is removed from the expected value. A bond length (or angle) with $|Z| > 2$ is considered an outlier worth inspection. RMSZ is the root-mean-square of all Z scores of the bond lengths (or angles).

Mol	Type	Chain	Res	Link	Bond lengths			Bond angles		
					Counts	RMSZ	$\# Z > 2$	Counts	RMSZ	$\# Z > 2$
2	FAD	A	1561	1	51,58,58	1.50	6 (11%)	54,89,89	2.19	8 (14%)
3	EUG	A	1562	-	11,11,12	1.73	1 (9%)	14,14,15	1.20	1 (7%)
2	FAD	B	1561	1	51,58,58	1.41	8 (15%)	54,89,89	2.11	7 (12%)
3	EUG	B	1562	-	11,11,12	1.71	1 (9%)	14,14,15	1.42	1 (7%)

In the following table, the Chirals column lists the number of chiral outliers, the number of chiral centers analysed, the number of these observed in the model and the number defined in the chemical component dictionary. Similar counts are reported in the Torsion and Rings columns. '-' means no outliers of that kind were identified.

Mol	Type	Chain	Res	Link	Chirals	Torsions	Rings
2	FAD	A	1561	1	-	0/28/50/50	0/6/6/6
3	EUG	A	1562	-	-	0/4/4/5	0/1/1/1
2	FAD	B	1561	1	-	0/28/50/50	0/6/6/6
3	EUG	B	1562	-	-	0/4/4/5	0/1/1/1

All (16) bond length outliers are listed below:

Mol	Chain	Res	Type	Atoms	Z	Observed(Å)	Ideal(Å)
2	B	1561	FAD	C5X-N5	2.20	1.38	1.35
2	B	1561	FAD	C1'-N10	2.25	1.50	1.48
2	A	1561	FAD	C2A-N1A	2.30	1.38	1.33
2	B	1561	FAD	C8M-C8	2.56	1.56	1.51
2	B	1561	FAD	C2A-N1A	2.60	1.38	1.33
2	A	1561	FAD	C4-N3	2.94	1.38	1.33
2	A	1561	FAD	C4X-N5	3.11	1.37	1.33
2	B	1561	FAD	C4X-N5	3.43	1.38	1.33
2	B	1561	FAD	C4-N3	3.49	1.39	1.33
2	B	1561	FAD	C10-N1	3.67	1.38	1.33
2	B	1561	FAD	C2A-N3A	4.18	1.39	1.32
2	A	1561	FAD	C2A-N3A	4.20	1.39	1.32
2	A	1561	FAD	C1'-N10	4.21	1.52	1.48
2	A	1561	FAD	C10-N1	4.69	1.39	1.33
3	A	1562	EUG	C4-C3	5.20	1.48	1.40
3	B	1562	EUG	C4-C3	5.22	1.48	1.40

All (17) bond angle outliers are listed below:

Mol	Chain	Res	Type	Atoms	Z	Observed(°)	Ideal(°)
2	A	1561	FAD	N3A-C2A-N1A	-11.17	119.13	128.86
2	B	1561	FAD	N3A-C2A-N1A	-10.27	119.91	128.86
2	B	1561	FAD	C4X-C4-N3	-2.89	119.37	123.48
2	A	1561	FAD	C4X-C4-N3	-2.62	119.75	123.48
2	B	1561	FAD	C1'-N10-C10	-2.37	116.07	118.50
2	A	1561	FAD	O4B-C4B-C5B	-2.17	102.09	109.40
2	B	1561	FAD	C5X-C9A-N10	2.56	119.56	117.66
2	A	1561	FAD	C4B-O4B-C1B	2.76	112.70	109.77
2	A	1561	FAD	C4X-N5-C5X	3.04	119.97	116.76
2	B	1561	FAD	C4X-N5-C5X	3.06	120.00	116.76

Continued on next page...

Continued from previous page...

Mol	Chain	Res	Type	Atoms	Z	Observed(°)	Ideal(°)
2	A	1561	FAD	C1'-N10-C9A	3.42	121.48	118.35
3	A	1562	EUG	O3-C3-C4	3.46	118.76	114.55
2	A	1561	FAD	C5X-C9A-N10	3.76	120.45	117.66
3	B	1562	EUG	O3-C3-C4	4.08	119.52	114.55
2	B	1561	FAD	C1'-N10-C9A	5.12	123.04	118.35
2	B	1561	FAD	C4-N3-C2	6.66	120.98	115.16
2	A	1561	FAD	C4-N3-C2	6.75	121.06	115.16

There are no chirality outliers.

There are no torsion outliers.

There are no ring outliers.

3 monomers are involved in 4 short contacts:

Mol	Chain	Res	Type	Clashes	Symm-Clashes
2	A	1561	FAD	1	0
2	B	1561	FAD	2	0
3	B	1562	EUG	1	0

5.7 Other polymers [i](#)

There are no such residues in this entry.

5.8 Polymer linkage issues [i](#)

There are no chain breaks in this entry.

6 Fit of model and data [i](#)

6.1 Protein, DNA and RNA chains [i](#)

In the following table, the column labelled ‘#RSRZ > 2’ contains the number (and percentage) of RSRZ outliers, followed by percent RSRZ outliers for the chain as percentile scores relative to all X-ray entries and entries of similar resolution. The OWAB column contains the minimum, median, 95th percentile and maximum values of the occupancy-weighted average B-factor per residue. The column labelled ‘Q < 0.9’ lists the number of (and percentage) of residues with an average occupancy less than 0.9.

Mol	Chain	Analysed	<RSRZ>	#RSRZ>2	OWAB(Å ²)	Q<0.9
1	A	550/560 (98%)	-0.25	6 (1%) 80 82	28, 38, 52, 64	0
1	B	550/560 (98%)	0.10	8 (1%) 74 76	34, 50, 84, 99	0
All	All	1100/1120 (98%)	-0.08	14 (1%) 77 79	28, 44, 76, 99	0

All (14) RSRZ outliers are listed below:

Mol	Chain	Res	Type	RSRZ
1	B	7	PHE	4.0
1	B	8	ARG	3.4
1	A	159	ASN	3.0
1	B	180	ALA	2.9
1	B	52	MET	2.6
1	A	325	ARG	2.5
1	B	6	GLU	2.2
1	B	35	GLU	2.2
1	A	347	ASN	2.2
1	B	369	GLU	2.2
1	B	331	THR	2.1
1	A	52	MET	2.0
1	A	329	SER	2.0
1	A	8	ARG	2.0

6.2 Non-standard residues in protein, DNA, RNA chains [i](#)

There are no non-standard protein/DNA/RNA residues in this entry.

6.3 Carbohydrates [i](#)

There are no carbohydrates in this entry.

6.4 Ligands [i](#)

In the following table, the Atoms column lists the number of modelled atoms in the group and the number defined in the chemical component dictionary. LLDF column lists the quality of electron density of the group with respect to its neighbouring residues in protein, DNA or RNA chains. The B-factors column lists the minimum, median, 95th percentile and maximum values of B factors of atoms in the group. The column labelled 'Q< 0.9' lists the number of atoms with occupancy less than 0.9.

Mol	Type	Chain	Res	Atoms	RSCC	RSR	LLDF	B-factors(Å ²)	Q<0.9
3	EUG	A	1562	11/12	0.94	0.23	3.02	44,47,48,48	0
3	EUG	B	1562	11/12	0.94	0.23	1.09	47,49,50,51	0
2	FAD	A	1561	53/53	0.96	0.14	0.07	39,42,46,47	0
2	FAD	B	1561	53/53	0.97	0.14	-0.60	39,48,52,53	0

6.5 Other polymers [i](#)

There are no such residues in this entry.