



wwPDB X-ray Structure Validation Summary Report ⓘ

Feb 15, 2017 – 07:07 am GMT

PDB ID : 1W36
Title : RECB CD:DNA COMPLEX
Authors : Singleton, M.R.; Dillingham, M.S.; Gaudier, M.; C Kowalczykowski, S.;
Wigley, D.B.
Deposited on : 2004-07-13
Resolution : 3.10 Å(reported)

This is a wwPDB X-ray Structure Validation Summary Report for a publicly released PDB entry.

We welcome your comments at validation@mail.wwpdb.org

A user guide is available at

<http://wwpdb.org/validation/2016/XrayValidationReportHelp>

with specific help available everywhere you see the ⓘ symbol.

The following versions of software and data (see [references ⓘ](#)) were used in the production of this report:

MolProbity	:	4.02b-467
Xtriage (Phenix)	:	1.9-1692
EDS	:	trunk28620
Percentile statistics	:	20161228.v01 (using entries in the PDB archive December 28th 2016)
Refmac	:	5.8.0135
CCP4	:	6.5.0
Ideal geometry (proteins)	:	Engh & Huber (2001)
Ideal geometry (DNA, RNA)	:	Parkinson et al. (1996)
Validation Pipeline (wwPDB-VP)	:	recalc28949

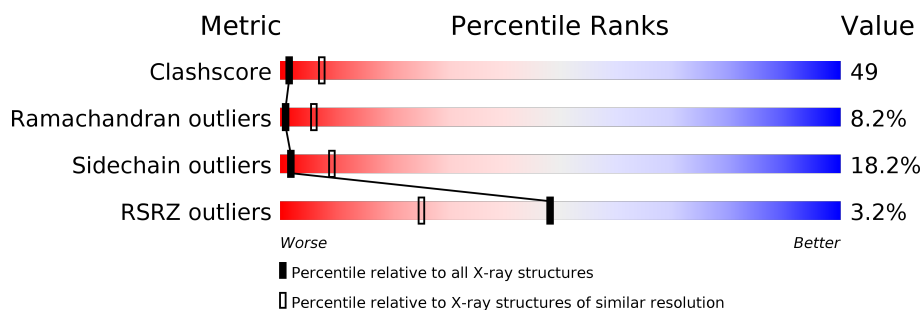
1 Overall quality at a glance

The following experimental techniques were used to determine the structure:

X-RAY DIFFRACTION

The reported resolution of this entry is 3.10 Å.

Percentile scores (ranging between 0-100) for global validation metrics of the entry are shown in the following graphic. The table shows the number of entries on which the scores are based.



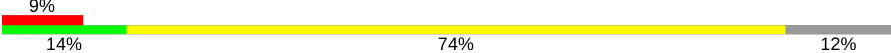
Metric	Whole archive (#Entries)	Similar resolution (#Entries, resolution range(Å))
Clashscore	112137	1099 (3.12-3.08)
Ramachandran outliers	110173	1057 (3.12-3.08)
Sidechain outliers	110143	1057 (3.12-3.08)
RSRZ outliers	101464	1006 (3.12-3.08)

The table below summarises the geometric issues observed across the polymeric chains and their fit to the electron density. The red, orange, yellow and green segments on the lower bar indicate the fraction of residues that contain outliers for ≥ 3 , 2, 1 and 0 types of geometric quality criteria. A grey segment represents the fraction of residues that are not modelled. The numeric value for each fraction is indicated below the corresponding segment, with a dot representing fractions $\leq 5\%$. The upper red bar (where present) indicates the fraction of residues that have poor fit to the electron density. The numeric value is given above the bar.

Mol	Chain	Length	Quality of chain
1	B	1180	<div> <div>2%</div> <div>32% 48% 16%</div> <div>..</div> </div>
1	E	1180	<div> <div>3%</div> <div>34% 47% 14%</div> <div>..</div> </div>
2	C	1122	<div> <div>%</div> <div>37% 45% 15%</div> <div>.</div> </div>
2	F	1122	<div> <div></div> <div>40% 40% 14%</div> <div>..</div> </div>
3	D	608	<div> <div>2%</div> <div>31% 42% 13% 11%</div> <div>.</div> </div>
3	G	608	<div> <div>13%</div> <div>30% 43% 13% 11%</div> <div>.</div> </div>
4	Y	43	<div> <div>9%</div> <div>12% 70% 7% 12%</div> <div></div> </div>

Continued on next page...

Continued from previous page...

Mol	Chain	Length	Quality of chain
4	Z	43	

The following table lists non-polymeric compounds, carbohydrate monomers and non-standard residues in protein, DNA, RNA chains that are outliers for geometric or electron-density-fit criteria:

Mol	Type	Chain	Res	Chirality	Geometry	Clashes	Electron density
5	CA	E	4000	-	-	-	X

2 Entry composition [i](#)

There are 5 unique types of molecules in this entry. The entry contains 46145 atoms, of which 0 are hydrogens and 0 are deuteriums.

In the tables below, the ZeroOcc column contains the number of atoms modelled with zero occupancy, the AltConf column contains the number of residues with at least one atom in alternate conformation and the Trace column contains the number of residues modelled with at most 2 atoms.

- Molecule 1 is a protein called EXODEOXYRIBONUCLEASE V BETA CHAIN.

Mol	Chain	Residues	Atoms					ZeroOcc	AltConf	Trace
1	B	1158	Total	C	N	O	S	0	0	0
			9258	5837	1641	1740	40			
1	E	1158	Total	C	N	O	S	0	0	0
			9258	5837	1641	1740	40			

- Molecule 2 is a protein called EXODEOXYRIBONUCLEASE V GAMMA CHAIN.

Mol	Chain	Residues	Atoms					ZeroOcc	AltConf	Trace
2	C	1122	Total	C	N	O	S	0	0	1
			9079	5783	1569	1684	43			
2	F	1078	Total	C	N	O	S	0	0	1
			8714	5558	1501	1612	43			

- Molecule 3 is a protein called EXODEOXYRIBONUCLEASE V ALPHA CHAIN.

Mol	Chain	Residues	Atoms					ZeroOcc	AltConf	Trace
3	D	539	Total	C	N	O	S	0	0	1
			4144	2587	754	785	18			
3	G	539	Total	C	N	O	S	0	0	1
			4144	2587	754	785	18			

- Molecule 4 is a DNA chain called DNA HAIRPIN.

Mol	Chain	Residues	Atoms					ZeroOcc	AltConf	Trace
4	Y	38	Total	C	N	O	P	0	0	0
			773	371	142	224	36			
4	Z	38	Total	C	N	O	P	0	0	0
			773	371	142	224	36			

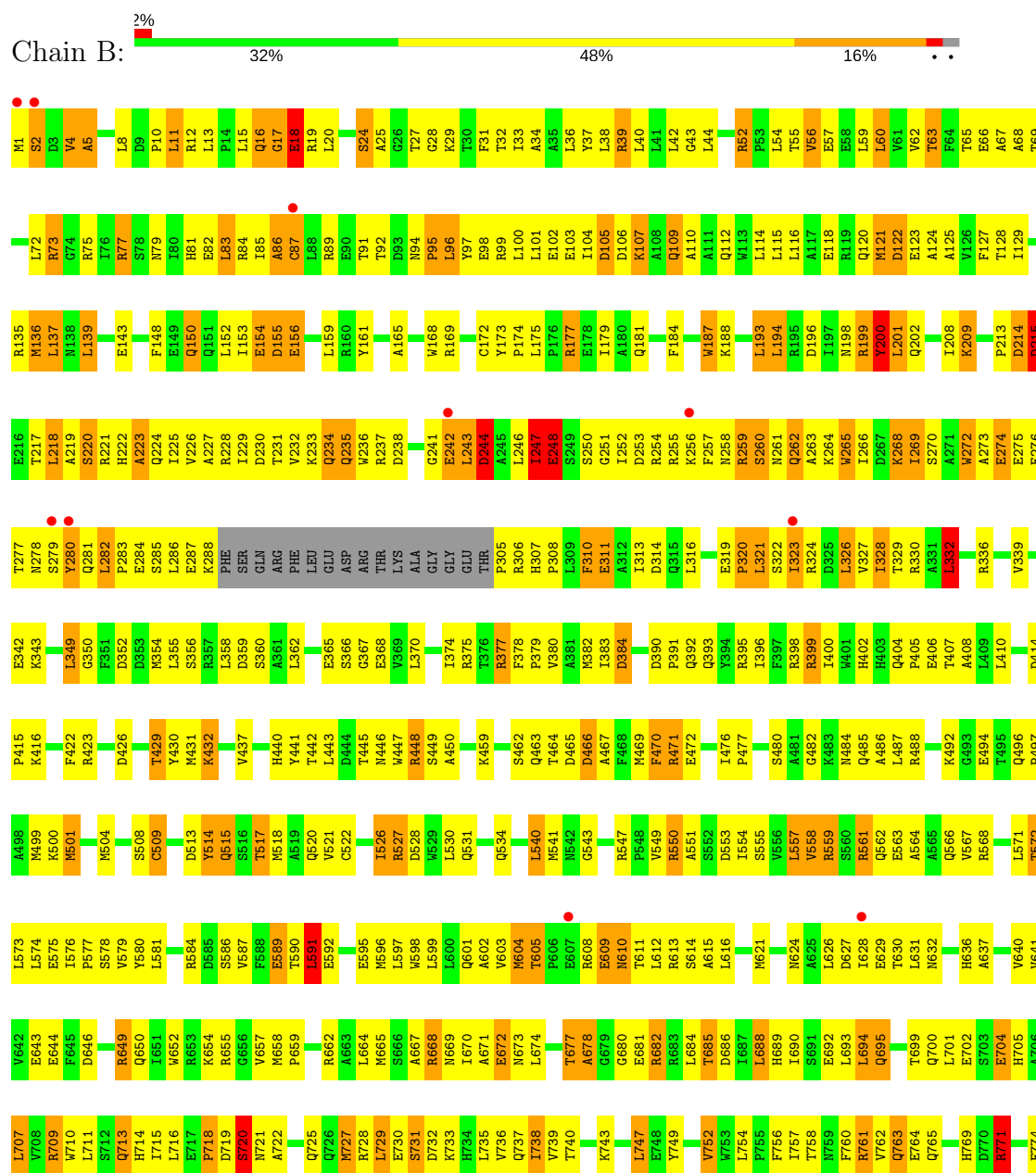
- Molecule 5 is CALCIUM ION (three-letter code: CA) (formula: Ca).

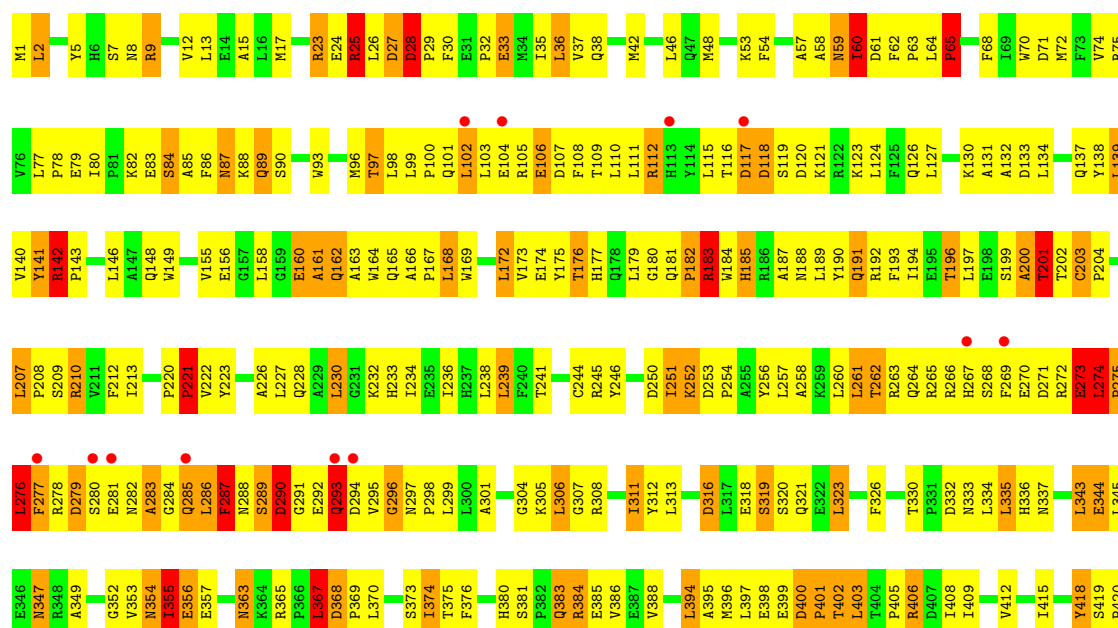
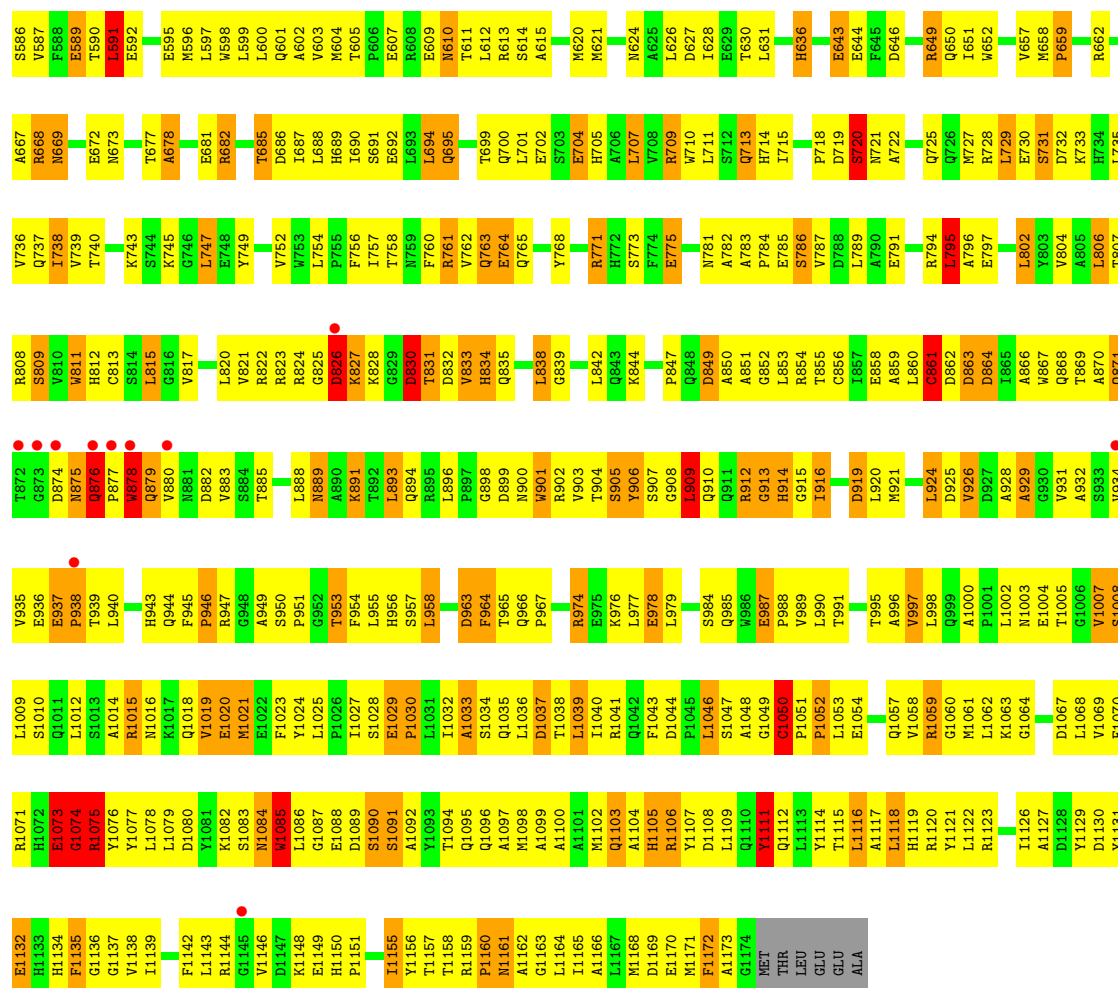
Mol	Chain	Residues	Atoms		ZeroOcc	AltConf
5	B	1	Total 1	Ca 1	0	0
5	E	1	Total 1	Ca 1	0	0

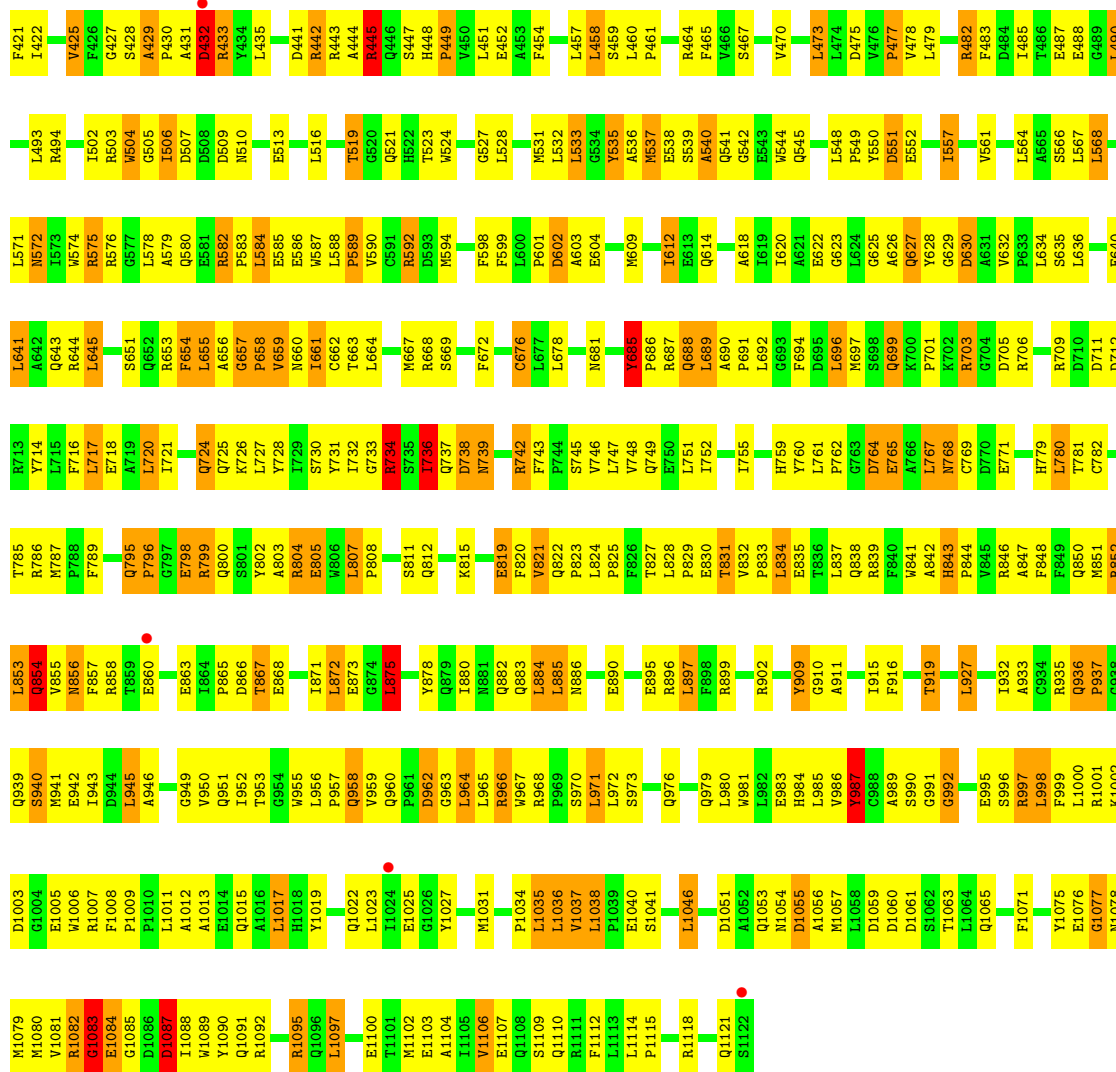
3 Residue-property plots

These plots are drawn for all protein, RNA and DNA chains in the entry. The first graphic for a chain summarises the proportions of the various outlier classes displayed in the second graphic. The second graphic shows the sequence view annotated by issues in geometry and electron density. Residues are color-coded according to the number of geometric quality criteria for which they contain at least one outlier: green = 0, yellow = 1, orange = 2 and red = 3 or more. A red dot above a residue indicates a poor fit to the electron density ($RSRZ > 2$). Stretches of 2 or more consecutive residues without any outlier are shown as a green connector. Residues present in the sample, but not in the model, are shown in grey.

• Molecule 1: EXODEOXYRIBONUCLEASE V BETA CHAIN

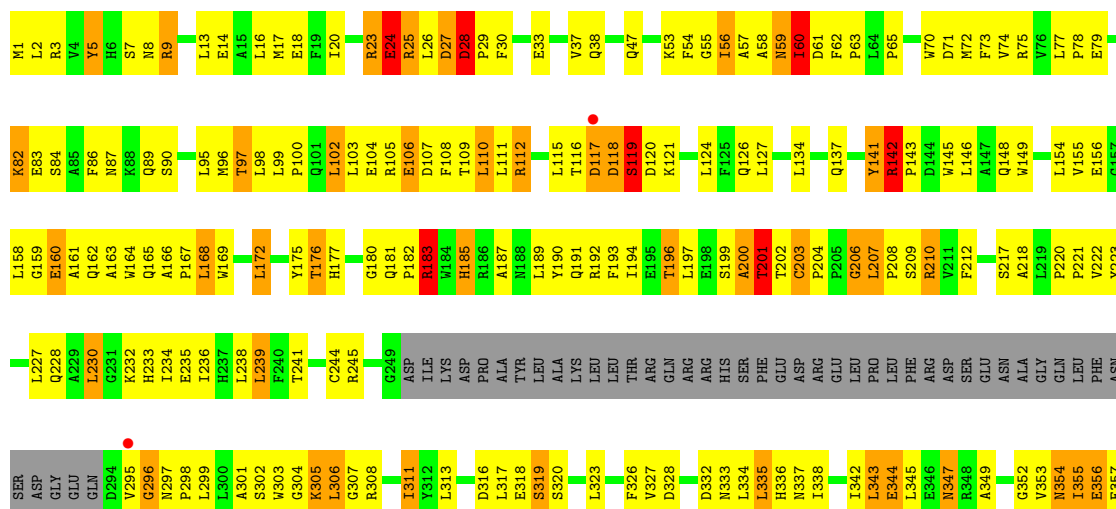


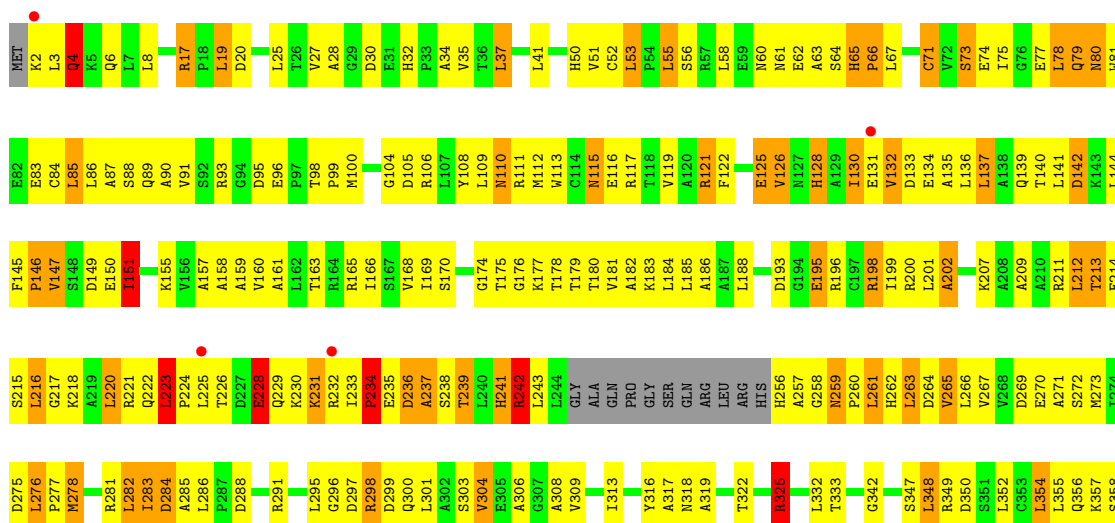


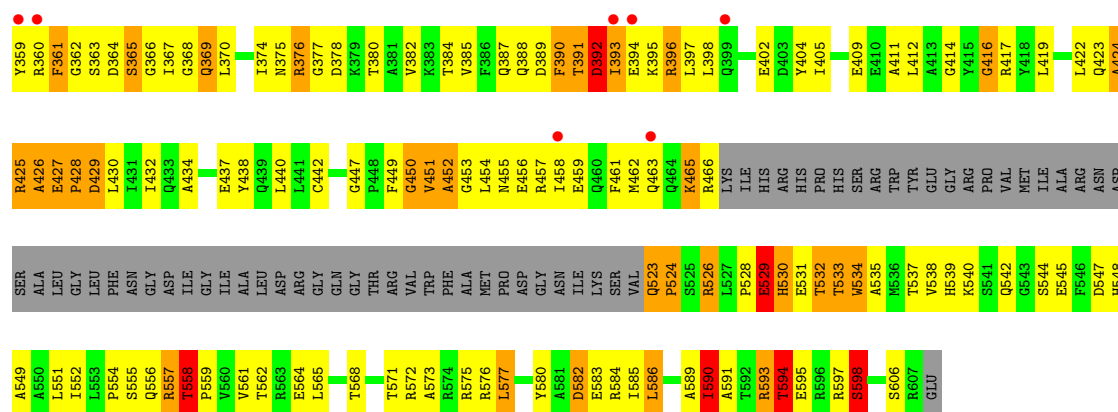


• Molecule 2: EXODEOXYRIBONUCLEASE V GAMMA CHAIN

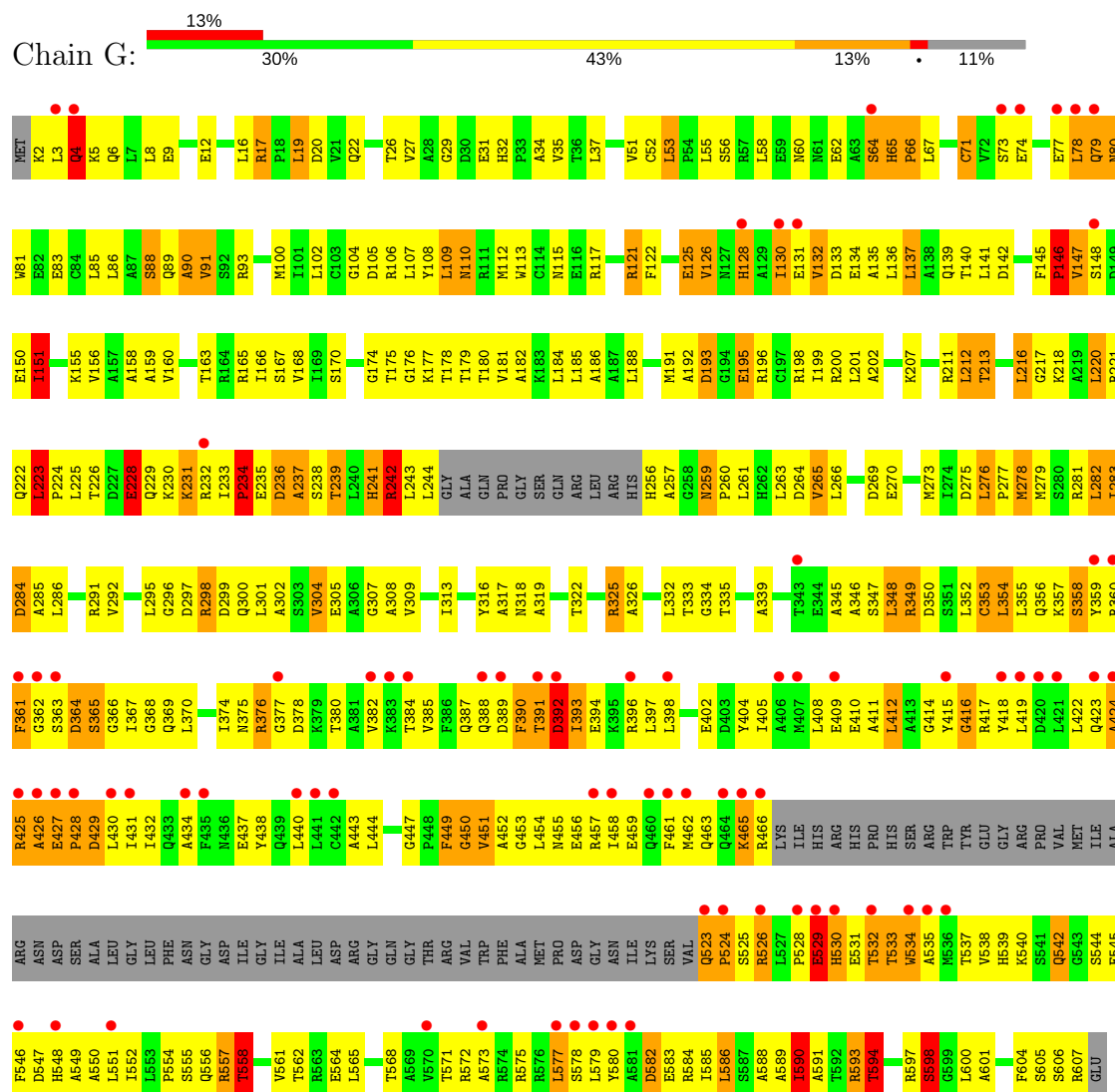
Chain F: 40% 40% 14%



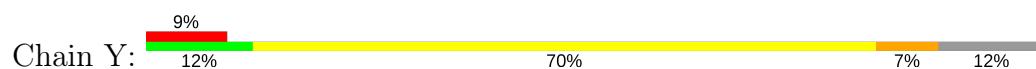


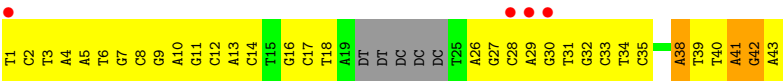


● Molecule 3: EXODEOXYRIBONUCLEASE V ALPHA CHAIN



● Molecule 4: DNA HAIRPIN





● Molecule 4: DNA HAIRPIN



4 Data and refinement statistics

Property	Value	Source
Space group	P 21 21 21	Depositor
Cell constants a, b, c, α , β , γ	132.60Å 187.23Å 335.37Å 90.00° 90.00° 90.00°	Depositor
Resolution (Å)	46.84 – 3.10 46.84 – 3.09	Depositor EDS
% Data completeness (in resolution range)	99.9 (46.84-3.10) 100.0 (46.84-3.09)	Depositor EDS
R_{merge}	0.07	Depositor
R_{sym}	(Not available)	Depositor
$\langle I/\sigma(I) \rangle$ ¹	4.91 (at 3.06Å)	Xtriage
Refinement program	CNS 1.1	Depositor
R, R_{free}	0.242 , 0.296 0.238 , (Not available)	Depositor DCC
R_{free} test set	No test flags present.	DCC
Wilson B-factor (Å ²)	76.3	Xtriage
Anisotropy	0.109	Xtriage
Bulk solvent k_{sol} (e/Å ³), B_{sol} (Å ²)	0.31 , 51.1	EDS
L-test for twinning ²	$\langle L \rangle = 0.47$, $\langle L^2 \rangle = 0.30$	Xtriage
Estimated twinning fraction	No twinning to report.	Xtriage
F_o, F_c correlation	0.91	EDS
Total number of atoms	46145	wwPDB-VP
Average B, all atoms (Å ²)	67.0	wwPDB-VP

Xtriage's analysis on translational NCS is as follows: *The largest off-origin peak in the Patterson function is 1.62% of the height of the origin peak. No significant pseudotranslation is detected.*

¹Intensities estimated from amplitudes.

²Theoretical values of $\langle |L| \rangle$, $\langle L^2 \rangle$ for acentric reflections are 0.5, 0.333 respectively for untwinned datasets, and 0.375, 0.2 for perfectly twinned datasets.

5 Model quality ⓘ

5.1 Standard geometry ⓘ

Bond lengths and bond angles in the following residue types are not validated in this section: CA

The Z score for a bond length (or angle) is the number of standard deviations the observed value is removed from the expected value. A bond length (or angle) with $|Z| > 5$ is considered an outlier worth inspection. RMSZ is the root-mean-square of all Z scores of the bond lengths (or angles).

Mol	Chain	Bond lengths		Bond angles	
		RMSZ	$\# Z > 5$	RMSZ	$\# Z > 5$
1	B	0.79	2/9455 (0.0%)	0.98	28/12827 (0.2%)
1	E	0.84	5/9455 (0.1%)	1.01	21/12827 (0.2%)
2	C	0.86	3/9306 (0.0%)	1.02	19/12646 (0.2%)
2	F	0.96	12/8933 (0.1%)	1.05	27/12143 (0.2%)
3	D	0.75	1/4207 (0.0%)	1.00	8/5699 (0.1%)
3	G	0.75	0/4207	0.97	11/5699 (0.2%)
4	Y	0.81	1/866 (0.1%)	0.92	1/1333 (0.1%)
4	Z	0.77	0/866	0.96	1/1333 (0.1%)
All	All	0.84	24/47295 (0.1%)	1.00	116/64507 (0.2%)

Chiral center outliers are detected by calculating the chiral volume of a chiral center and verifying if the center is modelled as a planar moiety or with the opposite hand. A planarity outlier is detected by checking planarity of atoms in a peptide group, atoms in a mainchain group or atoms of a sidechain that are expected to be planar.

Mol	Chain	#Chirality outliers	#Planarity outliers
1	B	0	2
1	E	0	2
2	C	0	4
2	F	0	2
4	Y	0	2
All	All	0	12

The worst 5 of 24 bond length outliers are listed below:

Mol	Chain	Res	Type	Atoms	Z	Observed(Å)	Ideal(Å)
2	F	504	TRP	CB-CG	-11.04	1.30	1.50
2	C	504	TRP	CB-CG	-10.43	1.31	1.50
2	F	866	ASP	CB-CG	9.31	1.71	1.51
2	C	866	ASP	CB-CG	8.90	1.70	1.51
1	E	18	GLU	CG-CD	6.86	1.62	1.51

The worst 5 of 116 bond angle outliers are listed below:

Mol	Chain	Res	Type	Atoms	Z	Observed(°)	Ideal(°)
2	C	1083	GLY	N-CA-C	8.85	135.22	113.10
2	C	866	ASP	CB-CG-OD2	8.72	126.15	118.30
2	F	866	ASP	CB-CG-OD2	8.57	126.01	118.30
2	F	1083	GLY	N-CA-C	8.47	134.28	113.10
3	D	104	GLY	N-CA-C	-8.00	93.10	113.10

There are no chirality outliers.

5 of 12 planarity outliers are listed below:

Mol	Chain	Res	Type	Group
1	B	200	TYR	Sidechain
1	B	906	TYR	Sidechain
2	C	418	TYR	Sidechain
2	C	535	TYR	Sidechain
2	C	685	TYR	Sidechain

5.2 Too-close contacts [i](#)

In the following table, the Non-H and H(model) columns list the number of non-hydrogen atoms and hydrogen atoms in the chain respectively. The H(added) column lists the number of hydrogen atoms added and optimized by MolProbity. The Clashes column lists the number of clashes within the asymmetric unit, whereas Symm-Clashes lists symmetry related clashes.

Mol	Chain	Non-H	H(model)	H(added)	Clashes	Symm-Clashes
1	B	9258	0	9112	1027	0
1	E	9258	0	9112	939	0
2	C	9079	0	8877	916	0
2	F	8714	0	8528	717	1
3	D	4144	0	4181	439	0
3	G	4144	0	4181	425	0
4	Y	773	0	432	95	0
4	Z	773	0	432	87	0
5	B	1	0	0	0	0
5	E	1	0	0	0	0
All	All	46145	0	44855	4452	1

The all-atom clashscore is defined as the number of clashes found per 1000 atoms (including hydrogen atoms). The all-atom clashscore for this structure is 49.

The worst 5 of 4452 close contacts within the same asymmetric unit are listed below, sorted by their clash magnitude.

Atom-1	Atom-2	Interatomic distance (Å)	Clash overlap (Å)
4:Y:16:DG:C2'	4:Y:17:DC:H5''	1.69	1.21
1:B:1050:CYS:C	1:B:1052:PRO:HD2	1.63	1.19
2:C:442:ARG:HG3	2:C:442:ARG:HH11	1.05	1.18
1:E:1050:CYS:C	1:E:1052:PRO:HD2	1.64	1.18
3:G:62:GLU:HA	3:G:65:HIS:HB2	1.22	1.17

All (1) symmetry-related close contacts are listed below. The label for Atom-2 includes the symmetry operator and encoded unit-cell translations to be applied.

Atom-1	Atom-2	Interatomic distance (Å)	Clash overlap (Å)
2:F:105:ARG:O	2:F:937:PRO:O[3_645]	2.11	0.09

5.3 Torsion angles [i](#)

5.3.1 Protein backbone [i](#)

In the following table, the Percentiles column shows the percent Ramachandran outliers of the chain as a percentile score with respect to all X-ray entries followed by that with respect to entries of similar resolution.

The Analysed column shows the number of residues for which the backbone conformation was analysed, and the total number of residues.

Mol	Chain	Analysed	Favoured	Allowed	Outliers	Percentiles	
1	B	1154/1180 (98%)	898 (78%)	164 (14%)	92 (8%)	1	6
1	E	1154/1180 (98%)	915 (79%)	147 (13%)	92 (8%)	1	6
2	C	1120/1122 (100%)	873 (78%)	164 (15%)	83 (7%)	1	7
2	F	1074/1122 (96%)	869 (81%)	135 (13%)	70 (6%)	1	9
3	D	533/608 (88%)	390 (73%)	81 (15%)	62 (12%)	0	2
3	G	533/608 (88%)	386 (72%)	90 (17%)	57 (11%)	0	3
All	All	5568/5820 (96%)	4331 (78%)	781 (14%)	456 (8%)	1	6

5 of 456 Ramachandran outliers are listed below:

Mol	Chain	Res	Type
1	B	17	GLY
1	B	95	PRO
1	B	155	ASP
1	B	214	ASP

Continued on next page...

Continued from previous page...

Mol	Chain	Res	Type
1	B	244	ASP

5.3.2 Protein sidechains ⓘ

In the following table, the Percentiles column shows the percent sidechain outliers of the chain as a percentile score with respect to all X-ray entries followed by that with respect to entries of similar resolution.

The Analysed column shows the number of residues for which the sidechain conformation was analysed, and the total number of residues.

Mol	Chain	Analysed	Rotameric	Outliers	Percentiles	
1	B	981/999 (98%)	796 (81%)	185 (19%)	2	7
1	E	981/999 (98%)	797 (81%)	184 (19%)	2	8
2	C	976/977 (100%)	798 (82%)	178 (18%)	2	9
2	F	937/977 (96%)	769 (82%)	168 (18%)	2	9
3	D	436/492 (89%)	361 (83%)	75 (17%)	2	11
3	G	436/492 (89%)	360 (83%)	76 (17%)	2	10
All	All	4747/4936 (96%)	3881 (82%)	866 (18%)	2	9

5 of 866 residues with a non-rotameric sidechain are listed below:

Mol	Chain	Res	Type
3	D	216	LEU
1	E	310	PHE
3	G	88	SER
3	D	278	MET
1	E	16	GLN

Some sidechains can be flipped to improve hydrogen bonding and reduce clashes. 5 of 272 such sidechains are listed below:

Mol	Chain	Res	Type
3	D	115	ASN
1	E	281	GLN
2	F	1096	GLN
3	D	289	HIS
1	E	16	GLN

5.3.3 RNA [i](#)

There are no RNA molecules in this entry.

5.4 Non-standard residues in protein, DNA, RNA chains [i](#)

There are no non-standard protein/DNA/RNA residues in this entry.

5.5 Carbohydrates [i](#)

There are no carbohydrates in this entry.

5.6 Ligand geometry [i](#)

Of 2 ligands modelled in this entry, 2 are monoatomic - leaving 0 for Mogul analysis.

There are no bond length outliers.

There are no bond angle outliers.

There are no chirality outliers.

There are no torsion outliers.

There are no ring outliers.

No monomer is involved in short contacts.

5.7 Other polymers [i](#)

There are no such residues in this entry.

5.8 Polymer linkage issues [i](#)

There are no chain breaks in this entry.

6 Fit of model and data [i](#)

6.1 Protein, DNA and RNA chains [i](#)

In the following table, the column labelled ‘#RSRZ > 2’ contains the number (and percentage) of RSRZ outliers, followed by percent RSRZ outliers for the chain as percentile scores relative to all X-ray entries and entries of similar resolution. The OWAB column contains the minimum, median, 95th percentile and maximum values of the occupancy-weighted average B-factor per residue. The column labelled ‘Q < 0.9’ lists the number of (and percentage) of residues with an average occupancy less than 0.9.

Mol	Chain	Analysed	<RSRZ>	#RSRZ > 2		OWAB(Å ²)	Q < 0.9
1	B	1158/1180 (98%)	0.01	28 (2%)	59 37	31, 68, 111, 125	0
1	E	1158/1180 (98%)	0.02	39 (3%)	46 23	25, 56, 118, 140	0
2	C	1122/1122 (100%)	-0.05	16 (1%)	75 57	30, 62, 103, 134	0
2	F	1078/1122 (96%)	-0.25	3 (0%)	93 86	22, 43, 76, 108	0
3	D	539/608 (88%)	-0.02	11 (2%)	65 44	34, 70, 110, 127	0
3	G	539/608 (88%)	0.60	78 (14%)	3 1	32, 84, 135, 140	0
4	Y	38/43 (88%)	0.66	4 (10%)	7 2	68, 116, 152, 157	0
4	Z	38/43 (88%)	0.58	4 (10%)	7 2	49, 135, 174, 184	0
All	All	5670/5906 (96%)	0.01	183 (3%)	48 25	22, 60, 120, 184	0

The worst 5 of 183 RSRZ outliers are listed below:

Mol	Chain	Res	Type	RSRZ
1	E	307	HIS	13.8
1	E	242	GLU	9.2
3	G	362	GLY	7.4
3	G	423	GLN	7.1
1	E	285	SER	7.0

6.2 Non-standard residues in protein, DNA, RNA chains [i](#)

There are no non-standard protein/DNA/RNA residues in this entry.

6.3 Carbohydrates [i](#)

There are no carbohydrates in this entry.

6.4 Ligands [i](#)

In the following table, the Atoms column lists the number of modelled atoms in the group and the number defined in the chemical component dictionary. LLDF column lists the quality of electron density of the group with respect to its neighbouring residues in protein, DNA or RNA chains. The B-factors column lists the minimum, median, 95th percentile and maximum values of B factors of atoms in the group. The column labelled 'Q< 0.9' lists the number of atoms with occupancy less than 0.9.

Mol	Type	Chain	Res	Atoms	RSCC	RSR	LLDF	B-factors(\AA^2)	Q<0.9
5	CA	E	4000	1/1	0.97	0.28	3.07	52,52,52,52	0
5	CA	B	4000	1/1	0.91	0.17	-0.96	67,67,67,67	0

6.5 Other polymers [i](#)

There are no such residues in this entry.