



Full wwPDB X-ray Structure Validation Report ⓘ

Feb 13, 2017 – 05:52 am GMT

PDB ID : 1W51
Title : BACE (BETA SECRETASE) IN COMPLEX WITH A NANOMOLAR NON-PEPTIDIC INHIBITOR
Authors : Patel, S.; Vuillard, L.; Cleasby, A.; Murray, C.W.; Yon, J.
Deposited on : 2004-08-04
Resolution : 2.55 Å(reported)

This is a Full wwPDB X-ray Structure Validation Report for a publicly released PDB entry.

We welcome your comments at validation@mail.wwpdb.org

A user guide is available at

<http://wwpdb.org/validation/2016/XrayValidationReportHelp>

with specific help available everywhere you see the ⓘ symbol.

The following versions of software and data (see [references ⓘ](#)) were used in the production of this report:

MolProbity	:	4.02b-467
Mogul	:	1.7.2 (RC1), CSD as538be (2017)
Xtriage (Phenix)	:	1.9-1692
EDS	:	trunk28620
Percentile statistics	:	20161228.v01 (using entries in the PDB archive December 28th 2016)
Refmac	:	5.8.0135
CCP4	:	6.5.0
Ideal geometry (proteins)	:	Engh & Huber (2001)
Ideal geometry (DNA, RNA)	:	Parkinson et al. (1996)
Validation Pipeline (wwPDB-VP)	:	recalc28949

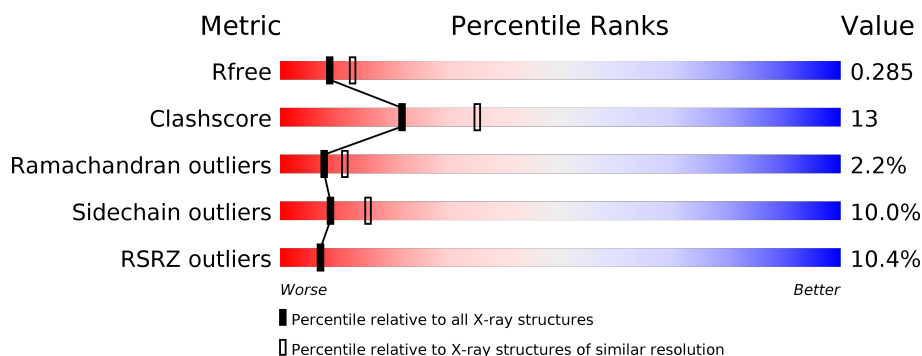
1 Overall quality at a glance

The following experimental techniques were used to determine the structure:

X-RAY DIFFRACTION

The reported resolution of this entry is 2.55 Å.

Percentile scores (ranging between 0-100) for global validation metrics of the entry are shown in the following graphic. The table shows the number of entries on which the scores are based.



Metric	Whole archive (#Entries)	Similar resolution (#Entries, resolution range(Å))
R_{free}	100719	4993 (2.58-2.50)
Clashscore	112137	5755 (2.58-2.50)
Ramachandran outliers	110173	5652 (2.58-2.50)
Sidechain outliers	110143	5654 (2.58-2.50)
RSRZ outliers	101464	5026 (2.58-2.50)

The table below summarises the geometric issues observed across the polymeric chains and their fit to the electron density. The red, orange, yellow and green segments on the lower bar indicate the fraction of residues that contain outliers for ≥ 3 , 2, 1 and 0 types of geometric quality criteria. A grey segment represents the fraction of residues that are not modelled. The numeric value for each fraction is indicated below the corresponding segment, with a dot representing fractions $\leq 5\%$. The upper red bar (where present) indicates the fraction of residues that have poor fit to the electron density. The numeric value is given above the bar.

Mol	Chain	Length	Quality of chain
1	A	411	

The following table lists non-polymeric compounds, carbohydrate monomers and non-standard residues in protein, DNA, RNA chains that are outliers for geometric or electron-density-fit criteria:

Mol	Type	Chain	Res	Chirality	Geometry	Clashes	Electron density
2	IOD	A	1503	-	-	-	X
2	IOD	A	1504	-	-	-	X

2 Entry composition [i](#)

There are 4 unique types of molecules in this entry. The entry contains 3129 atoms, of which 0 are hydrogens and 0 are deuteriums.

In the tables below, the ZeroOcc column contains the number of atoms modelled with zero occupancy, the AltConf column contains the number of residues with at least one atom in alternate conformation and the Trace column contains the number of residues modelled with at most 2 atoms.

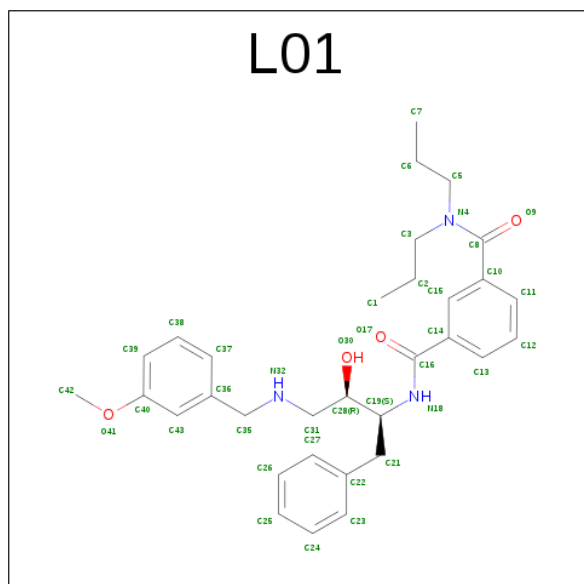
- Molecule 1 is a protein called BETA-SECRETASE 1.

Mol	Chain	Residues	Atoms					ZeroOcc	AltConf	Trace
1	A	375	Total	C	N	O	S	0	0	1
			2946	1886	491	555	14			

- Molecule 2 is IODIDE ION (three-letter code: IOD) (formula: I).

Mol	Chain	Residues	Atoms	ZeroOcc	AltConf
2	A	4	Total	0	0
			4 I		

- Molecule 3 is 3-[(1S,2R)-1-BENZYL-2-HYDROXY-3-[(3-METHOXYBENZYL)AMINO]PROPYL]AMINO)(HYDROXY)METHYL]-N,N-DIPROPYLBENZAMIDE (three-letter code: L01) (formula: C₃₂H₄₁N₃O₄).



Mol	Chain	Residues	Atoms				ZeroOcc	AltConf
3	A	1	Total	C	N	O	0	0
			39	32	3	4		

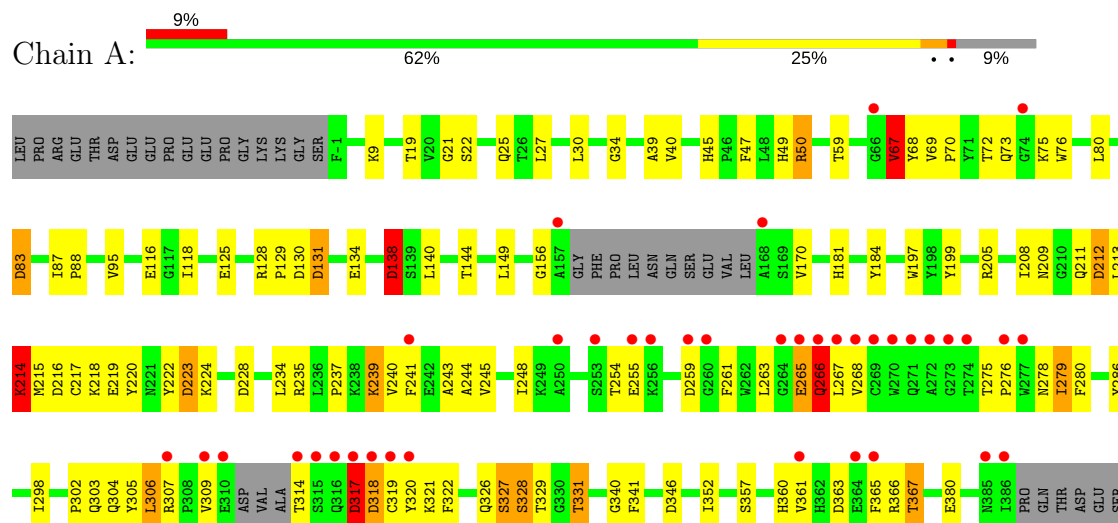
- Molecule 4 is water.

Mol	Chain	Residues	Atoms		ZeroOcc	AltConf
4	A	140	Total	O	0	0
			140	140		

3 Residue-property plots

These plots are drawn for all protein, RNA and DNA chains in the entry. The first graphic for a chain summarises the proportions of the various outlier classes displayed in the second graphic. The second graphic shows the sequence view annotated by issues in geometry and electron density. Residues are color-coded according to the number of geometric quality criteria for which they contain at least one outlier: green = 0, yellow = 1, orange = 2 and red = 3 or more. A red dot above a residue indicates a poor fit to the electron density ($RSRZ > 2$). Stretches of 2 or more consecutive residues without any outlier are shown as a green connector. Residues present in the sample, but not in the model, are shown in grey.

• Molecule 1: BETA-SECRETASE 1



4 Data and refinement statistics

Property	Value	Source
Space group	P 61 2 2	Depositor
Cell constants a, b, c, α , β , γ	102.35Å 102.35Å 168.00Å 90.00° 90.00° 120.00°	Depositor
Resolution (Å)	39.20 – 2.55 39.20 – 2.55	Depositor EDS
% Data completeness (in resolution range)	99.4 (39.20-2.55) 99.4 (39.20-2.55)	Depositor EDS
R_{merge}	0.11	Depositor
R_{sym}	(Not available)	Depositor
$\langle I/\sigma(I) \rangle$ ¹	1.51 (at 2.54Å)	Xtriage
Refinement program	REFMAC 5.1.29	Depositor
R, R_{free}	0.216 , 0.288 0.221 , 0.285	Depositor DCC
R_{free} test set	890 reflections (5.36%)	DCC
Wilson B-factor (Å ²)	45.7	Xtriage
Anisotropy	0.108	Xtriage
Bulk solvent k_{sol} (e/Å ³), B_{sol} (Å ²)	0.34 , 53.9	EDS
L-test for twinning ²	$\langle L \rangle = 0.48$, $\langle L^2 \rangle = 0.31$	Xtriage
Estimated twinning fraction	No twinning to report.	Xtriage
F_o, F_c correlation	0.93	EDS
Total number of atoms	3129	wwPDB-VP
Average B, all atoms (Å ²)	50.0	wwPDB-VP

Xtriage's analysis on translational NCS is as follows: *The largest off-origin peak in the Patterson function is 3.08% of the height of the origin peak. No significant pseudotranslation is detected.*

¹Intensities estimated from amplitudes.

²Theoretical values of $\langle |L| \rangle$, $\langle L^2 \rangle$ for acentric reflections are 0.5, 0.333 respectively for untwinned datasets, and 0.375, 0.2 for perfectly twinned datasets.

5 Model quality [i](#)

5.1 Standard geometry [i](#)

Bond lengths and bond angles in the following residue types are not validated in this section: IOD, L01

The Z score for a bond length (or angle) is the number of standard deviations the observed value is removed from the expected value. A bond length (or angle) with $|Z| > 5$ is considered an outlier worth inspection. RMSZ is the root-mean-square of all Z scores of the bond lengths (or angles).

Mol	Chain	Bond lengths		Bond angles	
		RMSZ	$\# Z > 5$	RMSZ	$\# Z > 5$
1	A	0.77	0/3020	0.95	14/4103 (0.3%)

There are no bond length outliers.

All (14) bond angle outliers are listed below:

Mol	Chain	Res	Type	Atoms	Z	Observed(°)	Ideal(°)
1	A	228	ASP	CB-CG-OD2	6.76	124.38	118.30
1	A	138	ASP	CB-CG-OD2	6.72	124.35	118.30
1	A	216	ASP	CB-CG-OD2	6.66	124.29	118.30
1	A	83	ASP	CB-CG-OD2	6.60	124.24	118.30
1	A	212	ASP	CB-CG-OD2	6.45	124.11	118.30
1	A	223	ASP	CB-CG-OD2	6.15	123.84	118.30
1	A	131	ASP	CB-CG-OD2	5.70	123.43	118.30
1	A	317	ASP	CB-CG-OD2	5.67	123.40	118.30
1	A	363	ASP	CB-CG-OD2	5.57	123.31	118.30
1	A	130	ASP	CB-CG-OD2	5.50	123.25	118.30
1	A	67	VAL	CB-CA-C	-5.25	101.42	111.40
1	A	259	ASP	CB-CG-OD2	5.24	123.02	118.30
1	A	346	ASP	CB-CG-OD2	5.13	122.92	118.30
1	A	318	ASP	CB-CG-OD2	5.11	122.90	118.30

There are no chirality outliers.

There are no planarity outliers.

5.2 Too-close contacts [i](#)

In the following table, the Non-H and H(model) columns list the number of non-hydrogen atoms and hydrogen atoms in the chain respectively. The H(added) column lists the number of hydrogen

atoms added and optimized by MolProbity. The Clashes column lists the number of clashes within the asymmetric unit, whereas Symm-Clashes lists symmetry related clashes.

Mol	Chain	Non-H	H(model)	H(added)	Clashes	Symm-Clashes
1	A	2946	0	2859	76	1
2	A	4	0	0	2	0
3	A	39	0	41	3	0
4	A	140	0	0	9	0
All	All	3129	0	2900	79	1

The all-atom clashscore is defined as the number of clashes found per 1000 atoms (including hydrogen atoms). The all-atom clashscore for this structure is 13.

All (79) close contacts within the same asymmetric unit are listed below, sorted by their clash magnitude.

Atom-1	Atom-2	Interatomic distance (Å)	Clash overlap (Å)
2:A:1503:IOD:I	4:A:2127:HOH:O	2.41	1.05
1:A:224:LYS:CE	1:A:329:THR:O	2.35	0.74
1:A:27:LEU:HD13	1:A:40:VAL:HG21	1.70	0.72
1:A:278:ASN:O	1:A:279:ILE:HD13	1.92	0.70
1:A:73:GLN:O	4:A:2050:HOH:O	2.09	0.69
1:A:224:LYS:HE3	1:A:329:THR:O	1.92	0.69
1:A:45:HIS:HD2	1:A:47:PHE:H	1.40	0.68
1:A:327:SER:OG	1:A:328:SER:N	2.26	0.67
1:A:235:ARG:O	1:A:331:THR:HA	1.97	0.64
1:A:265:GLU:O	1:A:266:GLN:HB2	1.98	0.63
1:A:224:LYS:HE2	1:A:329:THR:O	2.01	0.61
1:A:67:VAL:CG2	1:A:80:LEU:HG	2.33	0.59
1:A:208:ILE:HD12	1:A:213:LEU:HD11	1.84	0.59
1:A:21:GLY:HA2	1:A:83:ASP:OD1	2.02	0.58
1:A:181:HIS:CE1	1:A:184:TYR:CE1	2.92	0.58
1:A:213:LEU:O	1:A:214:LYS:C	2.43	0.58
1:A:39:ALA:HB2	1:A:76:TRP:CZ2	2.40	0.57
1:A:138:ASP:OD1	4:A:2078:HOH:O	2.17	0.57
1:A:241:PHE:CE1	1:A:245:VAL:CG2	2.89	0.56
1:A:215:MET:HE1	1:A:243:ALA:HB3	1.87	0.56
1:A:212:ASP:OD2	4:A:2099:HOH:O	2.17	0.55
1:A:241:PHE:CE1	1:A:245:VAL:HG21	2.41	0.55
1:A:181:HIS:CD2	1:A:181:HIS:O	2.60	0.55
1:A:205:ARG:HB3	1:A:286:TYR:HB2	1.88	0.55
1:A:275:THR:HG23	1:A:276:PRO:HD2	1.90	0.53
1:A:72:THR:HG23	3:A:1506:L01:H37	1.91	0.52
1:A:140:LEU:O	1:A:144:THR:OG1	2.22	0.51

Continued on next page...

Continued from previous page...

Atom-1	Atom-2	Interatomic distance (Å)	Clash overlap (Å)
1:A:50:ARG:O	1:A:116:GLU:HG2	2.11	0.51
1:A:261:PHE:CE1	1:A:322:PHE:HB2	2.46	0.51
1:A:298:ILE:HB	1:A:341:PHE:CZ	2.46	0.51
1:A:34:GLY:O	3:A:1506:L01:H43	2.10	0.51
1:A:237:PRO:HD3	1:A:331:THR:OG1	2.11	0.51
1:A:366:ARG:O	1:A:367:THR:HB	2.10	0.51
1:A:317:ASP:O	1:A:319:CYS:SG	2.69	0.50
1:A:49:HIS:HD2	4:A:2070:HOH:O	1.93	0.50
2:A:1505:IOD:I	4:A:2056:HOH:O	1.21	0.50
1:A:306:LEU:HA	1:A:321:LYS:O	2.11	0.50
1:A:213:LEU:O	1:A:215:MET:N	2.45	0.50
1:A:302:PRO:C	1:A:304:GLN:H	2.16	0.49
1:A:267:LEU:HG	1:A:268:VAL:N	2.28	0.49
1:A:69:VAL:HB	1:A:76:TRP:CE2	2.48	0.49
1:A:267:LEU:HD13	1:A:309:VAL:HG12	1.95	0.48
1:A:125:GLU:HB2	4:A:2095:HOH:O	2.13	0.48
1:A:45:HIS:CD2	1:A:47:PHE:H	2.27	0.48
1:A:278:ASN:C	1:A:279:ILE:HG12	2.35	0.47
1:A:261:PHE:CZ	1:A:322:PHE:HB2	2.50	0.47
1:A:199:TYR:HB3	1:A:352:ILE:HD11	1.97	0.47
1:A:68:TYR:CE2	1:A:70:PRO:HG3	2.50	0.46
1:A:217:CYS:HA	1:A:220:TYR:CD1	2.51	0.46
1:A:302:PRO:HA	1:A:305:TYR:CD2	2.51	0.46
1:A:50:ARG:NH2	4:A:2027:HOH:O	2.48	0.46
1:A:239:LYS:NZ	4:A:2108:HOH:O	2.09	0.45
1:A:275:THR:CG2	1:A:276:PRO:HD2	2.47	0.44
1:A:267:LEU:HD12	1:A:320:TYR:O	2.16	0.44
1:A:244:ALA:O	1:A:248:ILE:HG13	2.16	0.44
1:A:302:PRO:HA	1:A:305:TYR:CE2	2.52	0.44
1:A:69:VAL:HG21	1:A:76:TRP:CZ2	2.53	0.44
1:A:319:CYS:C	1:A:320:TYR:CD1	2.91	0.44
1:A:220:TYR:HA	1:A:240:VAL:HG21	2.00	0.44
1:A:156:GLY:HA2	1:A:170:VAL:HG12	2.00	0.44
1:A:340:GLY:HA2	1:A:360:HIS:HB2	2.00	0.43
1:A:222:TYR:HA	1:A:223:ASP:HA	1.79	0.43
1:A:319:CYS:C	1:A:320:TYR:CG	2.92	0.43
1:A:278:ASN:ND2	1:A:365:PHE:CE1	2.87	0.43
1:A:69:VAL:HG22	1:A:128:ARG:HB2	2.01	0.43
1:A:156:GLY:HA2	1:A:170:VAL:CB	2.48	0.43
1:A:19:THR:HA	1:A:25:GLN:O	2.20	0.42
1:A:280:PHE:HB3	1:A:305:TYR:OH	2.20	0.42

Continued on next page...

Continued from previous page...

Atom-1	Atom-2	Interatomic distance (Å)	Clash overlap (Å)
1:A:128:ARG:HB3	1:A:129:PRO:HA	2.02	0.42
1:A:156:GLY:HA2	1:A:170:VAL:HB	2.01	0.42
1:A:181:HIS:ND1	1:A:184:TYR:CZ	2.89	0.41
1:A:357:SER:HB3	1:A:360:HIS:HB3	2.02	0.41
1:A:67:VAL:HG22	1:A:80:LEU:CD1	2.50	0.41
1:A:118:ILE:O	1:A:118:ILE:HG23	2.21	0.40
1:A:321:LYS:HG2	1:A:322:PHE:N	2.36	0.40
1:A:267:LEU:HD11	1:A:319:CYS:HB3	2.03	0.40
1:A:87:ILE:O	1:A:88:PRO:C	2.60	0.40
3:A:1506:L01:C15	3:A:1506:L01:H5C1	2.51	0.40
1:A:39:ALA:CB	1:A:76:TRP:CZ2	3.04	0.40

All (1) symmetry-related close contacts are listed below. The label for Atom-2 includes the symmetry operator and encoded unit-cell translations to be applied.

Atom-1	Atom-2	Interatomic distance (Å)	Clash overlap (Å)
1:A:326:GLN:NE2	1:A:328:SER:O[12_555]	2.08	0.12

5.3 Torsion angles [i](#)

5.3.1 Protein backbone [i](#)

In the following table, the Percentiles column shows the percent Ramachandran outliers of the chain as a percentile score with respect to all X-ray entries followed by that with respect to entries of similar resolution.

The Analysed column shows the number of residues for which the backbone conformation was analysed, and the total number of residues.

Mol	Chain	Analysed	Favoured	Allowed	Outliers	Percentiles
1	A	369/411 (90%)	327 (89%)	34 (9%)	8 (2%)	8 11

All (8) Ramachandran outliers are listed below:

Mol	Chain	Res	Type
1	A	266	GLN
1	A	214	LYS
1	A	254	THR
1	A	279	ILE
1	A	265	GLU

Continued on next page...

Continued from previous page...

Mol	Chain	Res	Type
1	A	318	ASP
1	A	361	VAL
1	A	367	THR

5.3.2 Protein sidechains ⓘ

In the following table, the Percentiles column shows the percent sidechain outliers of the chain as a percentile score with respect to all X-ray entries followed by that with respect to entries of similar resolution.

The Analysed column shows the number of residues for which the sidechain conformation was analysed, and the total number of residues.

Mol	Chain	Analysed	Rotameric	Outliers	Percentiles
1	A	319/352 (91%)	287 (90%)	32 (10%)	9 16

All (32) residues with a non-rotameric sidechain are listed below:

Mol	Chain	Res	Type
1	A	9	LYS
1	A	22	SER
1	A	30	LEU
1	A	50	ARG
1	A	59	THR
1	A	67	VAL
1	A	75	LYS
1	A	95	VAL
1	A	131	ASP
1	A	134	GLU
1	A	138	ASP
1	A	149	LEU
1	A	197	TRP
1	A	209	ASN
1	A	211	GLN
1	A	214	LYS
1	A	218	LYS
1	A	219	GLU
1	A	234	LEU
1	A	239	LYS
1	A	255	GLU
1	A	263	LEU
1	A	266	GLN

Continued on next page...

Continued from previous page...

Mol	Chain	Res	Type
1	A	303	GLN
1	A	306	LEU
1	A	307	ARG
1	A	314	THR
1	A	317	ASP
1	A	327	SER
1	A	328	SER
1	A	331	THR
1	A	380	GLU

Some sidechains can be flipped to improve hydrogen bonding and reduce clashes. All (5) such sidechains are listed below:

Mol	Chain	Res	Type
1	A	12	GLN
1	A	45	HIS
1	A	49	HIS
1	A	73	GLN
1	A	233	ASN

5.3.3 RNA [i](#)

There are no RNA molecules in this entry.

5.4 Non-standard residues in protein, DNA, RNA chains [i](#)

There are no non-standard protein/DNA/RNA residues in this entry.

5.5 Carbohydrates [i](#)

There are no carbohydrates in this entry.

5.6 Ligand geometry [i](#)

Of 5 ligands modelled in this entry, 4 are monoatomic - leaving 1 for Mogul analysis.

In the following table, the Counts columns list the number of bonds (or angles) for which Mogul statistics could be retrieved, the number of bonds (or angles) that are observed in the model and the number of bonds (or angles) that are defined in the chemical component dictionary. The Link column lists molecule types, if any, to which the group is linked. The Z score for a bond length

(or angle) is the number of standard deviations the observed value is removed from the expected value. A bond length (or angle) with $|Z| > 2$ is considered an outlier worth inspection. RMSZ is the root-mean-square of all Z scores of the bond lengths (or angles).

Mol	Type	Chain	Res	Link	Bond lengths			Bond angles		
					Counts	RMSZ	$\# Z > 2$	Counts	RMSZ	$\# Z > 2$
3	L01	A	1506	-	41,41,41	0.69	0	51,53,53	1.21	3 (5%)

In the following table, the Chirals column lists the number of chiral outliers, the number of chiral centers analysed, the number of these observed in the model and the number defined in the chemical component dictionary. Similar counts are reported in the Torsion and Rings columns. '-' means no outliers of that kind were identified.

Mol	Type	Chain	Res	Link	Chirals	Torsions	Rings
3	L01	A	1506	-	-	0/38/38/38	0/3/3/3

There are no bond length outliers.

All (3) bond angle outliers are listed below:

Mol	Chain	Res	Type	Atoms	Z	Observed(°)	Ideal(°)
3	A	1506	L01	O9-C8-N4	-3.05	117.08	122.36
3	A	1506	L01	C40-C43-C36	2.99	123.00	119.71
3	A	1506	L01	C10-C8-N4	3.54	123.35	118.77

There are no chirality outliers.

There are no torsion outliers.

There are no ring outliers.

1 monomer is involved in 3 short contacts:

Mol	Chain	Res	Type	Clashes	Symm-Clashes
3	A	1506	L01	3	0

5.7 Other polymers [i](#)

There are no such residues in this entry.

5.8 Polymer linkage issues [i](#)

There are no chain breaks in this entry.

6 Fit of model and data ⓘ

6.1 Protein, DNA and RNA chains ⓘ

In the following table, the column labelled ‘#RSRZ> 2’ contains the number (and percentage) of RSRZ outliers, followed by percent RSRZ outliers for the chain as percentile scores relative to all X-ray entries and entries of similar resolution. The OWAB column contains the minimum, median, 95th percentile and maximum values of the occupancy-weighted average B-factor per residue. The column labelled ‘Q< 0.9’ lists the number of (and percentage) of residues with an average occupancy less than 0.9.

Mol	Chain	Analysed	<RSRZ>	#RSRZ>2	OWAB(Å ²)	Q<0.9
1	A	375/411 (91%)	0.38	39 (10%) 7 7	25, 45, 99, 116	3 (0%)

All (39) RSRZ outliers are listed below:

Mol	Chain	Res	Type	RSRZ
1	A	317	ASP	7.2
1	A	310	GLU	6.5
1	A	273	GLY	6.2
1	A	276	PRO	5.7
1	A	269	CYS	5.6
1	A	264	GLY	5.4
1	A	277	TRP	5.1
1	A	274	THR	5.1
1	A	309	VAL	5.0
1	A	386	ILE	4.9
1	A	259	ASP	4.8
1	A	270	TRP	4.6
1	A	319	CYS	4.6
1	A	318	ASP	4.4
1	A	253	SER	4.3
1	A	271	GLN	4.3
1	A	168	ALA	4.1
1	A	320	TYR	3.6
1	A	157	ALA	3.5
1	A	314	THR	3.5
1	A	260	GLY	3.3
1	A	255	GLU	3.3
1	A	266	GLN	3.2
1	A	316	GLN	3.2
1	A	364	GLU	2.9
1	A	256	LYS	2.7
1	A	315	SER	2.5

Continued on next page...

Continued from previous page...

Mol	Chain	Res	Type	RSRZ
1	A	385	ASN	2.5
1	A	268	VAL	2.4
1	A	361	VAL	2.3
1	A	307	ARG	2.2
1	A	365	PHE	2.2
1	A	74	GLY	2.1
1	A	250	ALA	2.1
1	A	272	ALA	2.1
1	A	241	PHE	2.1
1	A	265	GLU	2.0
1	A	66	GLY	2.0
1	A	267	LEU	2.0

6.2 Non-standard residues in protein, DNA, RNA chains [i](#)

There are no non-standard protein/DNA/RNA residues in this entry.

6.3 Carbohydrates [i](#)

There are no carbohydrates in this entry.

6.4 Ligands [i](#)

In the following table, the Atoms column lists the number of modelled atoms in the group and the number defined in the chemical component dictionary. LLDF column lists the quality of electron density of the group with respect to its neighbouring residues in protein, DNA or RNA chains. The B-factors column lists the minimum, median, 95th percentile and maximum values of B factors of atoms in the group. The column labelled 'Q < 0.9' lists the number of atoms with occupancy less than 0.9.

Mol	Type	Chain	Res	Atoms	RSCC	RSR	LLDF	B-factors(Å ²)	Q<0.9
2	IOD	A	1504	1/1	0.94	0.45	15.07	53,53,53,53	1
2	IOD	A	1503	1/1	0.96	0.34	9.43	53,53,53,53	1
3	L01	A	1506	39/39	0.95	0.17	0.08	24,39,57,71	0
2	IOD	A	1502	1/1	0.99	0.07	-3.63	68,68,68,68	1
2	IOD	A	1505	1/1	0.96	0.15	-	89,89,89,89	1

6.5 Other polymers [i](#)

There are no such residues in this entry.