



Full wwPDB X-ray Structure Validation Report ⓘ

Jan 8, 2018 – 06:00 PM EST

PDB ID : 1W6H
Title : Novel plasmepsin II-inhibitor complex
Authors : Lindberg, J.; Johansson, P.-O.; Rosenquist, A.; Kvarnstrom, I.; Vrang, L.; Samuelsson, B.; Unge, T.
Deposited on : 2004-08-18
Resolution : 2.24 Å(reported)

This is a Full wwPDB X-ray Structure Validation Report for a publicly released PDB entry.

We welcome your comments at validation@mail.wwpdb.org

A user guide is available at

<http://wwpdb.org/validation/2016/XrayValidationReportHelp>

with specific help available everywhere you see the ⓘ symbol.

The following versions of software and data (see [references ⓘ](#)) were used in the production of this report:

MolProbity : 4.02b-467
Mogul : 1.7.2 (RC1), CSD as538be (2017)
Xtriage (Phenix) : 1.9-1692
EDS : rb-20030736
Percentile statistics : 20161228.v01 (using entries in the PDB archive December 28th 2016)
Refmac : 5.8.0135
CCP4 : 6.5.0
Ideal geometry (proteins) : Engh & Huber (2001)
Ideal geometry (DNA, RNA) : Parkinson et al. (1996)
Validation Pipeline (wwPDB-VP) : rb-20030736

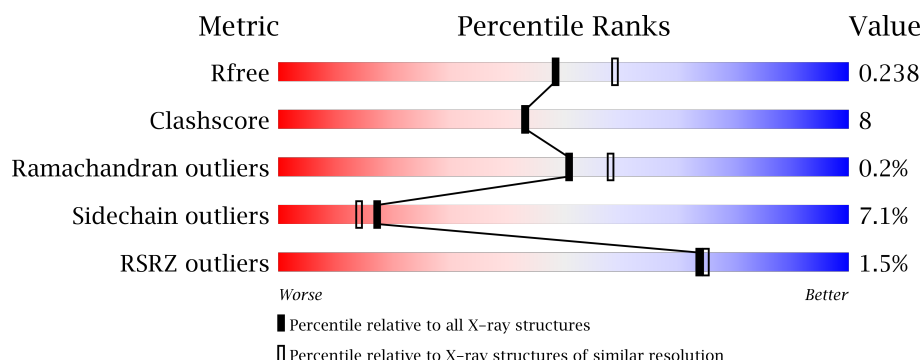
1 Overall quality at a glance

The following experimental techniques were used to determine the structure:

X-RAY DIFFRACTION

The reported resolution of this entry is 2.24 Å.

Percentile scores (ranging between 0-100) for global validation metrics of the entry are shown in the following graphic. The table shows the number of entries on which the scores are based.



Metric	Whole archive (#Entries)	Similar resolution (#Entries, resolution range(Å))
R_{free}	100719	1804 (2.26-2.22)
Clashscore	112137	1957 (2.26-2.22)
Ramachandran outliers	110173	1916 (2.26-2.22)
Sidechain outliers	110143	1917 (2.26-2.22)
RSRZ outliers	101464	1809 (2.26-2.22)

The table below summarises the geometric issues observed across the polymeric chains and their fit to the electron density. The red, orange, yellow and green segments on the lower bar indicate the fraction of residues that contain outliers for ≥ 3 , 2, 1 and 0 types of geometric quality criteria. A grey segment represents the fraction of residues that are not modelled. The numeric value for each fraction is indicated below the corresponding segment, with a dot representing fractions $\leq 5\%$. The upper red bar (where present) indicates the fraction of residues that have poor fit to the electron density. The numeric value is given above the bar.

Mol	Chain	Length	Quality of chain
1	A	331	<div> <div>2%</div> <div> <div></div> <div>80%</div> <div>16%</div> <div>••</div> </div> </div>
1	B	331	<div> <div>2%</div> <div> <div></div> <div>77%</div> <div>18%</div> <div>••</div> </div> </div>

The following table lists non-polymeric compounds, carbohydrate monomers and non-standard residues in protein, DNA, RNA chains that are outliers for geometric or electron-density-fit criteria:

Mol	Type	Chain	Res	Chirality	Geometry	Clashes	Electron density
2	TIT	A	1330	-	-	-	X
2	TIT	B	1330	-	-	-	X

2 Entry composition [i](#)

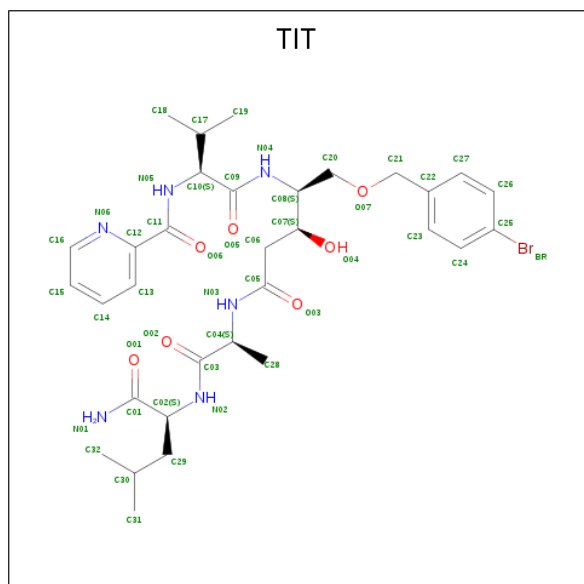
There are 3 unique types of molecules in this entry. The entry contains 5470 atoms, of which 0 are hydrogens and 0 are deuteriums.

In the tables below, the ZeroOcc column contains the number of atoms modelled with zero occupancy, the AltConf column contains the number of residues with at least one atom in alternate conformation and the Trace column contains the number of residues modelled with at most 2 atoms.

- Molecule 1 is a protein called PLASMEPSIN 2.

Mol	Chain	Residues	Atoms					ZeroOcc	AltConf	Trace
1	A	325	Total	C	N	O	S	0	0	0
			2574	1664	400	499	11			
1	B	325	Total	C	N	O	S	0	0	0
			2574	1664	400	499	11			

- Molecule 2 is N-((3S,4S)-5-[(4-BROMOBENZYL)OXY]-3-HYDROXY-4-{[N-(PYRIDIN-2-YLCARBONYL)-L-VALYL]AMINO}PENTANOYL)-L-ALANYL-L-LEUCINAMIDE (three-letter code: TIT) (formula: $C_{32}H_{45}BrN_6O_7$).



Mol	Chain	Residues	Atoms					ZeroOcc	AltConf
2	A	1	Total	Br	C	N	O	0	0
			46	1	32	6	7		
2	B	1	Total	Br	C	N	O	0	0
			46	1	32	6	7		

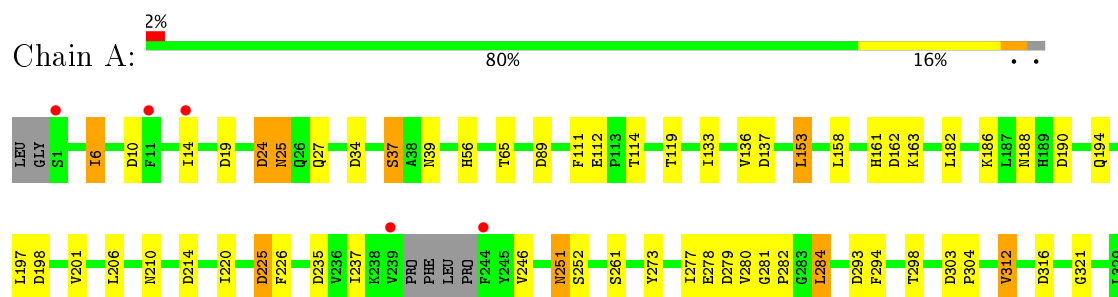
- Molecule 3 is water.

Mol	Chain	Residues	Atoms		ZeroOcc	AltConf
3	A	111	Total 111	O 111	0	0
3	B	119	Total 119	O 119	0	0

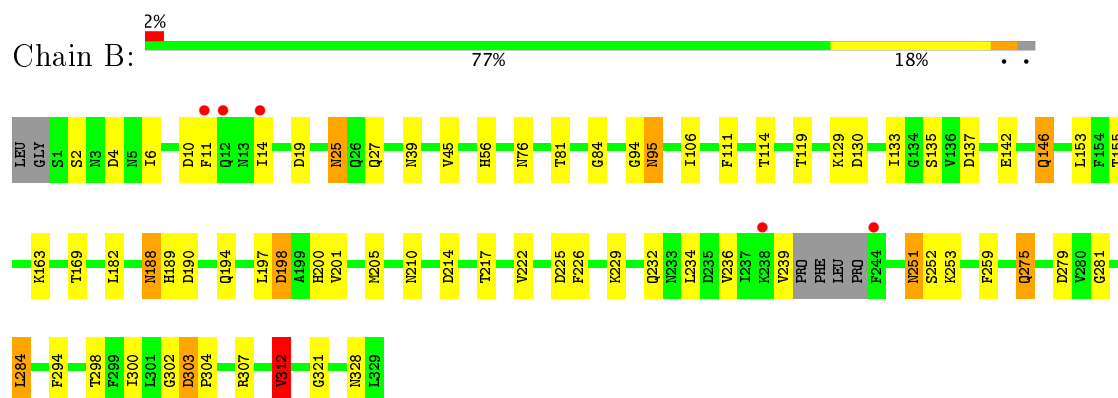
3 Residue-property plots [i](#)

These plots are drawn for all protein, RNA and DNA chains in the entry. The first graphic for a chain summarises the proportions of the various outlier classes displayed in the second graphic. The second graphic shows the sequence view annotated by issues in geometry and electron density. Residues are color-coded according to the number of geometric quality criteria for which they contain at least one outlier: green = 0, yellow = 1, orange = 2 and red = 3 or more. A red dot above a residue indicates a poor fit to the electron density ($RSRZ > 2$). Stretches of 2 or more consecutive residues without any outlier are shown as a green connector. Residues present in the sample, but not in the model, are shown in grey.

• Molecule 1: PLASMEPSIN 2



• Molecule 1: PLASMEPSIN 2



4 Data and refinement statistics

Property	Value	Source
Space group	P 1 21 1	Depositor
Cell constants a, b, c, α , β , γ	44.21Å 77.61Å 84.24Å 90.00° 90.00° 90.00°	Depositor
Resolution (Å)	84.51 – 2.24 42.12 – 2.24	Depositor EDS
% Data completeness (in resolution range)	99.0 (84.51-2.24) 99.0 (42.12-2.24)	Depositor EDS
R_{merge}	0.07	Depositor
R_{sym}	(Not available)	Depositor
$\langle I/\sigma(I) \rangle$ ¹	2.44 (at 2.24Å)	Xtriage
Refinement program	REFMAC 5.1.24	Depositor
R, R_{free}	0.197 , 0.246 0.204 , 0.238	Depositor DCC
R_{free} test set	1377 reflections (5.31%)	DCC
Wilson B-factor (Å ²)	31.2	Xtriage
Anisotropy	0.587	Xtriage
Bulk solvent k_{sol} (e/Å ³), B_{sol} (Å ²)	0.35 , 26.7	EDS
L-test for twinning ²	$\langle L \rangle = 0.50$, $\langle L^2 \rangle = 0.33$	Xtriage
Estimated twinning fraction	0.476 for h,-k,-l	Xtriage
F_o, F_c correlation	0.95	EDS
Total number of atoms	5470	wwPDB-VP
Average B, all atoms (Å ²)	35.0	wwPDB-VP

Xtriage's analysis on translational NCS is as follows: *The largest off-origin peak in the Patterson function is 7.06% of the height of the origin peak. No significant pseudotranslation is detected.*

¹Intensities estimated from amplitudes.

²Theoretical values of $\langle |L| \rangle$, $\langle L^2 \rangle$ for acentric reflections are 0.5, 0.333 respectively for untwinned datasets, and 0.375, 0.2 for perfectly twinned datasets.

5 Model quality [i](#)

5.1 Standard geometry [i](#)

Bond lengths and bond angles in the following residue types are not validated in this section: TIT

The Z score for a bond length (or angle) is the number of standard deviations the observed value is removed from the expected value. A bond length (or angle) with $|Z| > 5$ is considered an outlier worth inspection. RMSZ is the root-mean-square of all Z scores of the bond lengths (or angles).

Mol	Chain	Bond lengths		Bond angles	
		RMSZ	$\# Z > 5$	RMSZ	$\# Z > 5$
1	A	0.76	0/2637	0.87	12/3584 (0.3%)
1	B	0.76	1/2637 (0.0%)	0.87	8/3584 (0.2%)
All	All	0.76	1/5274 (0.0%)	0.87	20/7168 (0.3%)

All (1) bond length outliers are listed below:

Mol	Chain	Res	Type	Atoms	Z	Observed(Å)	Ideal(Å)
1	B	312	VAL	CB-CG1	-5.47	1.41	1.52

All (20) bond angle outliers are listed below:

Mol	Chain	Res	Type	Atoms	Z	Observed(°)	Ideal(°)
1	B	279	ASP	CB-CG-OD2	7.17	124.75	118.30
1	A	225	ASP	CB-CG-OD2	7.04	124.64	118.30
1	A	316	ASP	CB-CG-OD2	6.70	124.33	118.30
1	B	137	ASP	CB-CG-OD2	6.52	124.17	118.30
1	B	19	ASP	CB-CG-OD2	6.42	124.07	118.30
1	B	303	ASP	CB-CG-OD2	6.39	124.05	118.30
1	B	225	ASP	CB-CG-OD2	6.34	124.00	118.30
1	A	303	ASP	CB-CG-OD2	6.16	123.84	118.30
1	A	198	ASP	CB-CG-OD2	6.00	123.69	118.30
1	A	19	ASP	CB-CG-OD2	5.80	123.52	118.30
1	B	190	ASP	CB-CG-OD2	5.80	123.52	118.30
1	B	130	ASP	CB-CG-OD2	5.75	123.48	118.30
1	A	293	ASP	CB-CG-OD2	5.70	123.43	118.30
1	A	190	ASP	CB-CG-OD2	5.48	123.24	118.30
1	A	279	ASP	CB-CG-OD2	5.39	123.16	118.30
1	A	214	ASP	CB-CG-OD2	5.30	123.07	118.30
1	B	198	ASP	CB-CG-OD2	5.28	123.05	118.30
1	A	235	ASP	CB-CG-OD2	5.22	123.00	118.30

Continued on next page...

Continued from previous page...

Mol	Chain	Res	Type	Atoms	Z	Observed(°)	Ideal(°)
1	A	137	ASP	CB-CG-OD2	5.13	122.92	118.30
1	A	89	ASP	CB-CG-OD2	5.09	122.88	118.30

There are no chirality outliers.

There are no planarity outliers.

5.2 Too-close contacts ⓘ

In the following table, the Non-H and H(model) columns list the number of non-hydrogen atoms and hydrogen atoms in the chain respectively. The H(added) column lists the number of hydrogen atoms added and optimized by MolProbity. The Clashes column lists the number of clashes within the asymmetric unit, whereas Symm-Clashes lists symmetry related clashes.

Mol	Chain	Non-H	H(model)	H(added)	Clashes	Symm-Clashes
1	A	2574	0	2501	32	0
1	B	2574	0	2501	47	0
2	A	46	0	45	1	0
2	B	46	0	45	2	0
3	A	111	0	0	1	0
3	B	119	0	0	3	0
All	All	5470	0	5092	79	0

The all-atom clashscore is defined as the number of clashes found per 1000 atoms (including hydrogen atoms). The all-atom clashscore for this structure is 8.

All (79) close contacts within the same asymmetric unit are listed below, sorted by their clash magnitude.

Atom-1	Atom-2	Interatomic distance (Å)	Clash overlap (Å)
1:A:39:ASN:HD21	1:A:133:ILE:H	1.16	0.93
1:B:39:ASN:HD21	1:B:133:ILE:H	1.21	0.88
1:B:200:HIS:ND1	1:B:205:MET:HG2	1.93	0.84
1:A:25:ASN:HD22	1:A:25:ASN:H	1.26	0.81
1:A:194:GLN:HE21	1:A:210:ASN:HD21	1.31	0.78
1:A:277:ILE:HD12	1:A:280:VAL:HG11	1.66	0.77
1:A:188:ASN:HD21	1:A:210:ASN:HD22	1.33	0.76
1:B:25:ASN:HD21	1:B:27:GLN:HE21	1.32	0.75
1:A:25:ASN:HD21	1:A:27:GLN:HE21	1.34	0.74
1:B:25:ASN:H	1:B:25:ASN:HD22	1.33	0.74
1:A:34:ASP:OD1	1:A:37:SER:HB2	1.91	0.70
1:A:186:LYS:NZ	3:A:2075:HOH:O	2.26	0.67

Continued on next page...

Continued from previous page...

Atom-1	Atom-2	Interatomic distance (Å)	Clash overlap (Å)
1:B:188:ASN:C	1:B:188:ASN:HD22	1.97	0.67
1:A:278:GLU:HA	1:A:281:GLY:O	1.96	0.65
1:A:312:VAL:HG13	1:A:321:GLY:HA3	1.81	0.62
1:A:24:ASP:HB3	1:A:65:THR:OG1	2.02	0.60
1:A:277:ILE:O	1:A:280:VAL:HG12	2.02	0.59
1:B:142:GLU:O	1:B:146:GLN:HG2	2.02	0.59
1:B:114:THR:HB	2:B:1330:TIT:BR	2.58	0.58
1:B:281:GLY:HA3	1:B:284:LEU:HD22	1.86	0.57
1:A:114:THR:HB	2:A:1330:TIT:BR	2.59	0.57
1:A:251:ASN:C	1:A:251:ASN:HD22	2.09	0.57
1:B:194:GLN:HE21	1:B:210:ASN:HD21	1.53	0.56
1:B:129:LYS:NZ	3:B:2054:HOH:O	2.39	0.56
1:B:312:VAL:HG13	1:B:321:GLY:HA3	1.88	0.55
1:A:153:LEU:C	1:A:153:LEU:HD12	2.27	0.55
1:B:251:ASN:C	1:B:251:ASN:HD22	2.12	0.52
1:A:277:ILE:HD12	1:A:280:VAL:CG1	2.39	0.51
1:B:217:THR:HA	2:B:1330:TIT:O06	2.10	0.51
1:B:200:HIS:CE1	1:B:205:MET:HG2	2.48	0.49
1:B:229:LYS:HA	1:B:232:GLN:HE21	1.78	0.49
1:B:234:LEU:HD22	1:B:236:VAL:HB	1.95	0.49
1:B:4:ASP:OD1	1:B:94:GLY:HA3	2.13	0.49
1:A:188:ASN:HD21	1:A:210:ASN:ND2	2.04	0.48
1:B:146:GLN:HA	1:B:146:GLN:HE21	1.78	0.47
1:B:303:ASP:N	1:B:304:PRO:CD	2.78	0.47
1:A:280:VAL:HG13	1:A:284:LEU:HD23	1.98	0.46
1:B:14:ILE:HG22	1:B:275:GLN:HG2	1.97	0.46
1:B:39:ASN:HD21	1:B:133:ILE:N	2.00	0.46
1:B:25:ASN:N	1:B:25:ASN:HD22	2.06	0.46
1:B:222:VAL:HG11	1:B:226:PHE:CD1	2.51	0.46
1:B:239:VAL:O	1:B:239:VAL:HG12	2.15	0.46
1:A:194:GLN:NE2	1:A:210:ASN:HD21	2.08	0.45
1:A:161:HIS:CE1	1:A:162:ASP:OD1	2.70	0.45
1:B:294:PHE:HD2	1:B:298:THR:HB	1.81	0.45
1:B:251:ASN:HD22	1:B:252:SER:N	2.14	0.45
1:A:197:LEU:HD23	1:A:261:SER:HB3	1.99	0.45
1:A:6:ILE:HD13	1:A:6:ILE:O	2.16	0.45
1:B:188:ASN:HD21	1:B:194:GLN:HE21	1.65	0.45
1:B:163:LYS:NZ	3:B:2072:HOH:O	2.39	0.44
1:B:188:ASN:HD22	1:B:189:HIS:N	2.16	0.44
1:A:25:ASN:ND2	1:A:27:GLN:HE21	2.10	0.44
1:B:214:ASP:O	1:B:302:GLY:HA2	2.18	0.44

Continued on next page...

Continued from previous page...

Atom-1	Atom-2	Interatomic distance (Å)	Clash overlap (Å)
1:B:76:ASN:ND2	1:B:81:THR:OG1	2.47	0.44
1:A:201:VAL:HG23	1:A:226:PHE:CZ	2.53	0.43
1:B:11:PHE:O	1:B:14:ILE:HG12	2.17	0.43
1:A:312:VAL:HG13	1:A:321:GLY:CA	2.48	0.43
1:B:146:GLN:CA	1:B:146:GLN:HE21	2.31	0.43
1:B:188:ASN:C	1:B:188:ASN:ND2	2.70	0.43
1:A:294:PHE:HD2	1:A:298:THR:HB	1.84	0.43
1:B:153:LEU:HD12	1:B:153:LEU:C	2.40	0.42
1:A:251:ASN:C	1:A:251:ASN:ND2	2.72	0.42
1:A:237:ILE:HG13	1:A:246:VAL:HG22	2.00	0.42
1:B:239:VAL:HG13	3:B:2097:HOH:O	2.20	0.42
1:B:251:ASN:ND2	1:B:253:LYS:H	2.16	0.42
1:A:220:ILE:HD11	1:A:304:PRO:HB2	2.01	0.42
1:B:188:ASN:HD21	1:B:194:GLN:NE2	2.18	0.42
1:B:312:VAL:CG1	1:B:321:GLY:HA3	2.49	0.42
1:A:197:LEU:CD2	1:A:261:SER:HB3	2.50	0.41
1:B:222:VAL:HG11	1:B:226:PHE:HD1	1.84	0.41
1:A:112:GLU:OE2	1:A:112:GLU:HA	2.21	0.41
1:A:220:ILE:H	1:A:220:ILE:HD12	1.86	0.41
1:B:201:VAL:HG12	1:B:201:VAL:O	2.21	0.41
1:B:155:THR:OG1	1:B:169:THR:HB	2.21	0.41
1:B:197:LEU:HD13	1:B:259:PHE:HB3	2.02	0.40
1:B:312:VAL:HG13	1:B:321:GLY:CA	2.50	0.40
1:B:95:ASN:H	1:B:95:ASN:HD22	1.69	0.40
1:B:198:ASP:O	1:B:259:PHE:HA	2.21	0.40
1:B:84:GLY:HA2	1:B:106:ILE:HG12	2.02	0.40

There are no symmetry-related clashes.

5.3 Torsion angles [i](#)

5.3.1 Protein backbone [i](#)

In the following table, the Percentiles column shows the percent Ramachandran outliers of the chain as a percentile score with respect to all X-ray entries followed by that with respect to entries of similar resolution.

The Analysed column shows the number of residues for which the backbone conformation was analysed, and the total number of residues.

Mol	Chain	Analysed	Favoured	Allowed	Outliers	Percentiles	
1	A	321/331 (97%)	307 (96%)	13 (4%)	1 (0%)	44	49
1	B	321/331 (97%)	307 (96%)	14 (4%)	0	100	100
All	All	642/662 (97%)	614 (96%)	27 (4%)	1 (0%)	51	58

All (1) Ramachandran outliers are listed below:

Mol	Chain	Res	Type
1	A	282	PRO

5.3.2 Protein sidechains ⓘ

In the following table, the Percentiles column shows the percent sidechain outliers of the chain as a percentile score with respect to all X-ray entries followed by that with respect to entries of similar resolution.

The Analysed column shows the number of residues for which the sidechain conformation was analysed, and the total number of residues.

Mol	Chain	Analysed	Rotameric	Outliers	Percentiles	
1	A	290/295 (98%)	269 (93%)	21 (7%)	17	13
1	B	290/295 (98%)	270 (93%)	20 (7%)	18	15
All	All	580/590 (98%)	539 (93%)	41 (7%)	17	14

All (41) residues with a non-rotameric sidechain are listed below:

Mol	Chain	Res	Type
1	A	6	ILE
1	A	10	ASP
1	A	14	ILE
1	A	24	ASP
1	A	25	ASN
1	A	37	SER
1	A	56	HIS
1	A	111	PHE
1	A	119	THR
1	A	136	VAL
1	A	153	LEU
1	A	158	LEU
1	A	163	LYS
1	A	182	LEU
1	A	206	LEU

Continued on next page...

Continued from previous page...

Mol	Chain	Res	Type
1	A	225	ASP
1	A	251	ASN
1	A	252	SER
1	A	273	TYR
1	A	284	LEU
1	A	312	VAL
1	B	2	SER
1	B	6	ILE
1	B	10	ASP
1	B	25	ASN
1	B	45	VAL
1	B	56	HIS
1	B	95	ASN
1	B	111	PHE
1	B	119	THR
1	B	135	SER
1	B	146	GLN
1	B	182	LEU
1	B	188	ASN
1	B	251	ASN
1	B	275	GLN
1	B	284	LEU
1	B	300	ILE
1	B	307	ARG
1	B	312	VAL
1	B	328	ASN

Some sidechains can be flipped to improve hydrogen bonding and reduce clashes. All (20) such sidechains are listed below:

Mol	Chain	Res	Type
1	A	25	ASN
1	A	39	ASN
1	A	161	HIS
1	A	210	ASN
1	A	232	GLN
1	A	251	ASN
1	A	288	ASN
1	A	317	ASN
1	B	25	ASN
1	B	39	ASN
1	B	76	ASN
1	B	95	ASN

Continued on next page...

Continued from previous page...

Mol	Chain	Res	Type
1	B	146	GLN
1	B	188	ASN
1	B	189	HIS
1	B	210	ASN
1	B	228	ASN
1	B	232	GLN
1	B	251	ASN
1	B	288	ASN

5.3.3 RNA [i](#)

There are no RNA molecules in this entry.

5.4 Non-standard residues in protein, DNA, RNA chains [i](#)

There are no non-standard protein/DNA/RNA residues in this entry.

5.5 Carbohydrates [i](#)

There are no carbohydrates in this entry.

5.6 Ligand geometry [i](#)

2 ligands are modelled in this entry.

In the following table, the Counts columns list the number of bonds (or angles) for which Mogul statistics could be retrieved, the number of bonds (or angles) that are observed in the model and the number of bonds (or angles) that are defined in the Chemical Component Dictionary. The Link column lists molecule types, if any, to which the group is linked. The Z score for a bond length (or angle) is the number of standard deviations the observed value is removed from the expected value. A bond length (or angle) with $|Z| > 2$ is considered an outlier worth inspection. RMSZ is the root-mean-square of all Z scores of the bond lengths (or angles).

Mol	Type	Chain	Res	Link	Bond lengths			Bond angles		
					Counts	RMSZ	# Z > 2	Counts	RMSZ	# Z > 2
2	TIT	A	1330	-	47,47,47	4.61	33 (70%)	61,63,63	1.52	7 (11%)
2	TIT	B	1330	-	47,47,47	4.70	34 (72%)	61,63,63	1.26	8 (13%)

In the following table, the Chirals column lists the number of chiral outliers, the number of chiral centers analysed, the number of these observed in the model and the number defined in the

Chemical Component Dictionary. Similar counts are reported in the Torsion and Rings columns.
'-' means no outliers of that kind were identified.

Mol	Type	Chain	Res	Link	Chirals	Torsions	Rings
2	TIT	A	1330	-	-	0/54/54/54	0/2/2/2
2	TIT	B	1330	-	-	0/54/54/54	0/2/2/2

All (67) bond length outliers are listed below:

Mol	Chain	Res	Type	Atoms	Z	Observed(Å)	Ideal(Å)
2	B	1330	TIT	BR-C25	-18.75	1.51	1.90
2	A	1330	TIT	BR-C25	-18.40	1.51	1.90
2	B	1330	TIT	C06-C07	-6.84	1.43	1.53
2	A	1330	TIT	C06-C07	-5.92	1.44	1.53
2	A	1330	TIT	C08-N04	-5.45	1.36	1.46
2	B	1330	TIT	C02-C01	-5.41	1.40	1.52
2	A	1330	TIT	C02-C01	-5.32	1.40	1.52
2	B	1330	TIT	C07-C08	-5.24	1.45	1.54
2	B	1330	TIT	C08-N04	-5.13	1.37	1.46
2	A	1330	TIT	C07-C08	-5.10	1.45	1.54
2	B	1330	TIT	C04-N03	-5.02	1.35	1.46
2	B	1330	TIT	C20-C08	-4.77	1.42	1.52
2	B	1330	TIT	C02-N02	-4.77	1.35	1.45
2	B	1330	TIT	C04-C03	-4.71	1.40	1.52
2	B	1330	TIT	C06-C05	-4.70	1.41	1.51
2	A	1330	TIT	C06-C05	-4.59	1.41	1.51
2	A	1330	TIT	C04-N03	-4.56	1.36	1.46
2	A	1330	TIT	C02-N02	-4.52	1.36	1.45
2	A	1330	TIT	C10-C09	-4.42	1.42	1.52
2	A	1330	TIT	C04-C03	-4.40	1.41	1.52
2	A	1330	TIT	C10-N05	-4.34	1.36	1.45
2	B	1330	TIT	C29-C02	-4.28	1.39	1.53
2	A	1330	TIT	C29-C02	-4.18	1.39	1.53
2	A	1330	TIT	C20-C08	-4.16	1.44	1.52
2	B	1330	TIT	C10-C09	-4.04	1.43	1.52
2	A	1330	TIT	C12-C11	-3.96	1.41	1.50
2	B	1330	TIT	C28-C04	-3.93	1.41	1.52
2	A	1330	TIT	C28-C04	-3.91	1.41	1.52
2	B	1330	TIT	C10-N05	-3.88	1.37	1.45
2	B	1330	TIT	C21-C22	-3.86	1.41	1.50
2	A	1330	TIT	C21-C22	-3.59	1.42	1.50
2	B	1330	TIT	C12-C11	-3.33	1.42	1.50
2	A	1330	TIT	C18-C17	-3.28	1.40	1.52
2	B	1330	TIT	C19-C17	-3.25	1.40	1.52
2	A	1330	TIT	C19-C17	-3.18	1.40	1.52

Continued on next page...

Continued from previous page...

Mol	Chain	Res	Type	Atoms	Z	Observed(Å)	Ideal(Å)
2	B	1330	TIT	C18-C17	-3.13	1.40	1.52
2	B	1330	TIT	C29-C30	-2.85	1.39	1.52
2	A	1330	TIT	O04-C07	-2.63	1.37	1.43
2	A	1330	TIT	C29-C30	-2.59	1.40	1.52
2	B	1330	TIT	C17-C10	-2.56	1.46	1.54
2	B	1330	TIT	O04-C07	-2.53	1.37	1.43
2	A	1330	TIT	C17-C10	-2.53	1.46	1.54
2	B	1330	TIT	C32-C30	-2.07	1.39	1.51
2	A	1330	TIT	C31-C30	-2.04	1.39	1.51
2	B	1330	TIT	C13-C12	2.14	1.43	1.39
2	B	1330	TIT	C27-C22	2.15	1.43	1.38
2	B	1330	TIT	C24-C25	2.38	1.43	1.38
2	A	1330	TIT	C27-C22	2.42	1.43	1.38
2	A	1330	TIT	C23-C22	2.49	1.44	1.38
2	B	1330	TIT	C23-C22	2.49	1.44	1.38
2	A	1330	TIT	C26-C25	2.55	1.43	1.38
2	A	1330	TIT	C24-C25	2.56	1.43	1.38
2	B	1330	TIT	C26-C25	2.57	1.43	1.38
2	B	1330	TIT	C24-C23	2.62	1.43	1.38
2	B	1330	TIT	C27-C26	2.63	1.43	1.38
2	A	1330	TIT	C24-C23	2.74	1.43	1.38
2	A	1330	TIT	C27-C26	2.78	1.43	1.38
2	A	1330	TIT	O03-C05	6.27	1.36	1.23
2	B	1330	TIT	O03-C05	6.31	1.36	1.23
2	A	1330	TIT	O05-C09	6.61	1.36	1.23
2	A	1330	TIT	O06-C11	6.91	1.37	1.23
2	B	1330	TIT	O02-C03	6.93	1.37	1.23
2	B	1330	TIT	O05-C09	6.93	1.37	1.23
2	A	1330	TIT	O02-C03	7.06	1.37	1.23
2	B	1330	TIT	O06-C11	7.14	1.38	1.23
2	B	1330	TIT	O01-C01	7.29	1.37	1.23
2	A	1330	TIT	O01-C01	7.54	1.38	1.23

All (15) bond angle outliers are listed below:

Mol	Chain	Res	Type	Atoms	Z	Observed(°)	Ideal(°)
2	A	1330	TIT	O06-C11-C12	-4.69	111.09	121.13
2	B	1330	TIT	C13-C12-N06	-2.60	119.11	122.67
2	A	1330	TIT	C13-C12-N06	-2.37	119.43	122.67
2	B	1330	TIT	C30-C29-C02	-2.11	109.38	115.47
2	A	1330	TIT	C30-C29-C02	-2.05	109.57	115.47
2	B	1330	TIT	O01-C01-N01	-2.02	119.96	123.06

Continued on next page...

Continued from previous page...

Mol	Chain	Res	Type	Atoms	Z	Observed(°)	Ideal(°)
2	B	1330	TIT	C11-C12-N06	2.05	119.99	117.61
2	B	1330	TIT	C07-C08-N04	2.53	114.02	109.52
2	B	1330	TIT	C06-C05-N03	2.88	120.16	116.33
2	A	1330	TIT	C06-C05-N03	3.27	120.67	116.33
2	B	1330	TIT	C21-O07-C20	3.32	120.45	112.75
2	A	1330	TIT	C16-N06-C12	3.32	121.34	116.94
2	B	1330	TIT	C16-N06-C12	3.43	121.49	116.94
2	A	1330	TIT	C21-O07-C20	3.75	121.46	112.75
2	A	1330	TIT	C12-C11-N05	5.30	126.01	115.20

There are no chirality outliers.

There are no torsion outliers.

There are no ring outliers.

2 monomers are involved in 3 short contacts:

Mol	Chain	Res	Type	Clashes	Symm-Clashes
2	A	1330	TIT	1	0
2	B	1330	TIT	2	0

5.7 Other polymers [i](#)

There are no such residues in this entry.

5.8 Polymer linkage issues [i](#)

There are no chain breaks in this entry.

6 Fit of model and data ⓘ

6.1 Protein, DNA and RNA chains ⓘ

In the following table, the column labelled ‘#RSRZ> 2’ contains the number (and percentage) of RSRZ outliers, followed by percent RSRZ outliers for the chain as percentile scores relative to all X-ray entries and entries of similar resolution. The OWAB column contains the minimum, median, 95th percentile and maximum values of the occupancy-weighted average B-factor per residue. The column labelled ‘Q< 0.9’ lists the number of (and percentage) of residues with an average occupancy less than 0.9.

Mol	Chain	Analysed	<RSRZ>	#RSRZ>2	OWAB(Å ²)	Q<0.9
1	A	325/331 (98%)	-0.42	5 (1%) 74 75	19, 33, 56, 75	0
1	B	325/331 (98%)	-0.39	5 (1%) 74 75	19, 33, 61, 78	0
All	All	650/662 (98%)	-0.41	10 (1%) 74 75	19, 33, 59, 78	0

All (10) RSRZ outliers are listed below:

Mol	Chain	Res	Type	RSRZ
1	A	11	PHE	3.1
1	B	11	PHE	3.0
1	A	244	PHE	3.0
1	B	238	LYS	2.6
1	A	239	VAL	2.5
1	B	244	PHE	2.5
1	A	1	SER	2.4
1	A	14	ILE	2.3
1	B	12	GLN	2.3
1	B	14	ILE	2.1

6.2 Non-standard residues in protein, DNA, RNA chains ⓘ

There are no non-standard protein/DNA/RNA residues in this entry.

6.3 Carbohydrates ⓘ

There are no carbohydrates in this entry.

6.4 Ligands [i](#)

In the following table, the Atoms column lists the number of modelled atoms in the group and the number defined in the chemical component dictionary. LLDF column lists the quality of electron density of the group with respect to its neighbouring residues in protein, DNA or RNA chains. The B-factors column lists the minimum, median, 95th percentile and maximum values of B factors of atoms in the group. The column labelled 'Q< 0.9' lists the number of atoms with occupancy less than 0.9.

Mol	Type	Chain	Res	Atoms	RSCC	RSR	LLDF	B-factors(Å ²)	Q<0.9
2	TIT	A	1330	46/46	0.90	0.15	3.74	24,42,58,69	0
2	TIT	B	1330	46/46	0.90	0.16	2.37	23,40,57,70	0

6.5 Other polymers [i](#)

There are no such residues in this entry.