



Full wwPDB X-ray Structure Validation Report ⓘ

Nov 13, 2017 – 03:00 PM EST

PDB ID : 3W6C
Title : Crystal structure of catalytic domain of chitinase from *Ralstonia* sp. A-471 in complex with disaccharide
Authors : Arimori, T.; Kawamoto, N.; Okazaki, N.; Nakazawa, M.; Miyatake, K.; Fukamizo, T.; Ueda, M.; Tamada, T.
Deposited on : unknown
Resolution : 2.00 Å(reported)

This is a Full wwPDB X-ray Structure Validation Report for a publicly released PDB entry.

We welcome your comments at validation@mail.wwpdb.org

A user guide is available at

<http://wwpdb.org/validation/2016/XrayValidationReportHelp>

with specific help available everywhere you see the ⓘ symbol.

The following versions of software and data (see [references ⓘ](#)) were used in the production of this report:

MolProbity : 4.02b-467
Mogul : 1.7.2 (RC1), CSD as538be (2017)
Xtriage (Phenix) : 1.9-1692
EDS : rb-20030345
Percentile statistics : 20161228.v01 (using entries in the PDB archive December 28th 2016)
Refmac : 5.8.0135
CCP4 : 6.5.0
Ideal geometry (proteins) : Engh & Huber (2001)
Ideal geometry (DNA, RNA) : Parkinson et al. (1996)
Validation Pipeline (wwPDB-VP) : rb-20030345

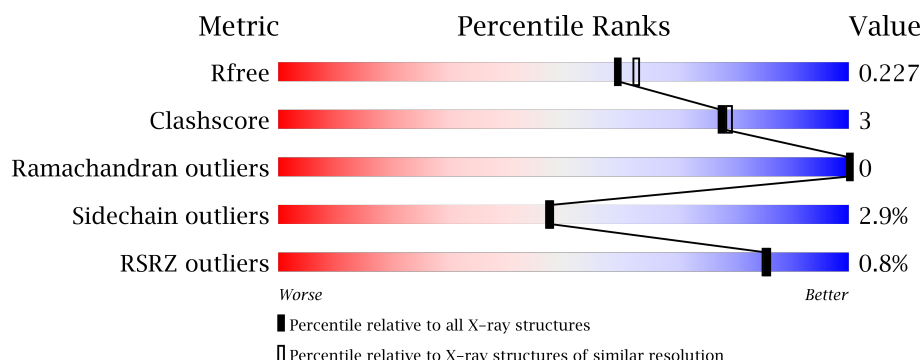
1 Overall quality at a glance

The following experimental techniques were used to determine the structure:

X-RAY DIFFRACTION

The reported resolution of this entry is 2.00 Å.

Percentile scores (ranging between 0-100) for global validation metrics of the entry are shown in the following graphic. The table shows the number of entries on which the scores are based.



Metric	Whole archive (#Entries)	Similar resolution (#Entries, resolution range(Å))
R_{free}	100719	6609 (2.00-2.00)
Clashscore	112137	7775 (2.00-2.00)
Ramachandran outliers	110173	7679 (2.00-2.00)
Sidechain outliers	110143	7678 (2.00-2.00)
RSRZ outliers	101464	6696 (2.00-2.00)

The table below summarises the geometric issues observed across the polymeric chains and their fit to the electron density. The red, orange, yellow and green segments on the lower bar indicate the fraction of residues that contain outliers for ≥ 3 , 2, 1 and 0 types of geometric quality criteria. A grey segment represents the fraction of residues that are not modelled. The numeric value for each fraction is indicated below the corresponding segment, with a dot representing fractions $\leq 5\%$. The upper red bar (where present) indicates the fraction of residues that have poor fit to the electron density. The numeric value is given above the bar.

Mol	Chain	Length	Quality of chain
1	A	183	
1	B	183	
1	C	183	
1	D	183	

The following table lists non-polymeric compounds, carbohydrate monomers and non-standard residues in protein, DNA, RNA chains that are outliers for geometric or electron-density-fit crite-

ria:

Mol	Type	Chain	Res	Chirality	Geometry	Clashes	Electron density
2	NAG	A	301	-	-	-	X
2	NAG	A	304	-	-	-	X
2	NAG	B	301	-	-	-	X
2	NAG	D	304	-	-	-	X

2 Entry composition

There are 3 unique types of molecules in this entry. The entry contains 5220 atoms, of which 0 are hydrogens and 0 are deuteriums.

In the tables below, the ZeroOcc column contains the number of atoms modelled with zero occupancy, the AltConf column contains the number of residues with at least one atom in alternate conformation and the Trace column contains the number of residues modelled with at most 2 atoms.

- Molecule 1 is a protein called Lysozyme-like chitinolytic enzyme.

Mol	Chain	Residues	Atoms					ZeroOcc	AltConf	Trace
1	A	151	Total	C	N	O	S	0	0	0
			1178	751	195	229	3			
1	B	153	Total	C	N	O	S	0	0	0
			1196	760	200	233	3			
1	C	153	Total	C	N	O	S	0	0	0
			1195	760	200	232	3			
1	D	153	Total	C	N	O	S	0	0	0
			1196	760	200	233	3			

There are 76 discrepancies between the modelled and reference sequences:

Chain	Residue	Modelled	Actual	Comment	Reference
A	72	MET	-	EXPRESSION TAG	UNP B7XCV4
A	73	ASN	-	EXPRESSION TAG	UNP B7XCV4
A	74	HIS	-	EXPRESSION TAG	UNP B7XCV4
A	75	LYS	-	EXPRESSION TAG	UNP B7XCV4
A	76	VAL	-	EXPRESSION TAG	UNP B7XCV4
A	77	HIS	-	EXPRESSION TAG	UNP B7XCV4
A	78	HIS	-	EXPRESSION TAG	UNP B7XCV4
A	79	HIS	-	EXPRESSION TAG	UNP B7XCV4
A	80	HIS	-	EXPRESSION TAG	UNP B7XCV4
A	81	HIS	-	EXPRESSION TAG	UNP B7XCV4
A	82	HIS	-	EXPRESSION TAG	UNP B7XCV4
A	83	ILE	-	EXPRESSION TAG	UNP B7XCV4
A	84	GLU	-	EXPRESSION TAG	UNP B7XCV4
A	85	GLY	-	EXPRESSION TAG	UNP B7XCV4
A	86	ARG	-	EXPRESSION TAG	UNP B7XCV4
A	87	HIS	-	EXPRESSION TAG	UNP B7XCV4
A	88	MET	-	EXPRESSION TAG	UNP B7XCV4
A	253	SER	-	EXPRESSION TAG	UNP B7XCV4
A	254	ARG	-	EXPRESSION TAG	UNP B7XCV4
B	72	MET	-	EXPRESSION TAG	UNP B7XCV4
B	73	ASN	-	EXPRESSION TAG	UNP B7XCV4

Continued on next page...

Continued from previous page...

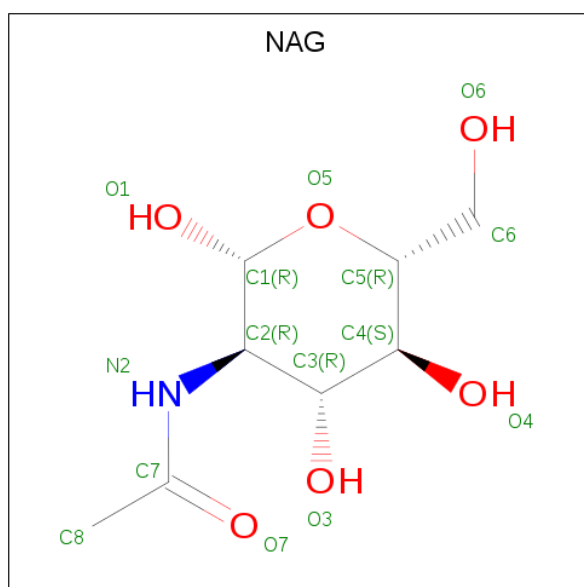
Chain	Residue	Modelled	Actual	Comment	Reference
B	74	HIS	-	EXPRESSION TAG	UNP B7XCV4
B	75	LYS	-	EXPRESSION TAG	UNP B7XCV4
B	76	VAL	-	EXPRESSION TAG	UNP B7XCV4
B	77	HIS	-	EXPRESSION TAG	UNP B7XCV4
B	78	HIS	-	EXPRESSION TAG	UNP B7XCV4
B	79	HIS	-	EXPRESSION TAG	UNP B7XCV4
B	80	HIS	-	EXPRESSION TAG	UNP B7XCV4
B	81	HIS	-	EXPRESSION TAG	UNP B7XCV4
B	82	HIS	-	EXPRESSION TAG	UNP B7XCV4
B	83	ILE	-	EXPRESSION TAG	UNP B7XCV4
B	84	GLU	-	EXPRESSION TAG	UNP B7XCV4
B	85	GLY	-	EXPRESSION TAG	UNP B7XCV4
B	86	ARG	-	EXPRESSION TAG	UNP B7XCV4
B	87	HIS	-	EXPRESSION TAG	UNP B7XCV4
B	88	MET	-	EXPRESSION TAG	UNP B7XCV4
B	253	SER	-	EXPRESSION TAG	UNP B7XCV4
B	254	ARG	-	EXPRESSION TAG	UNP B7XCV4
C	72	MET	-	EXPRESSION TAG	UNP B7XCV4
C	73	ASN	-	EXPRESSION TAG	UNP B7XCV4
C	74	HIS	-	EXPRESSION TAG	UNP B7XCV4
C	75	LYS	-	EXPRESSION TAG	UNP B7XCV4
C	76	VAL	-	EXPRESSION TAG	UNP B7XCV4
C	77	HIS	-	EXPRESSION TAG	UNP B7XCV4
C	78	HIS	-	EXPRESSION TAG	UNP B7XCV4
C	79	HIS	-	EXPRESSION TAG	UNP B7XCV4
C	80	HIS	-	EXPRESSION TAG	UNP B7XCV4
C	81	HIS	-	EXPRESSION TAG	UNP B7XCV4
C	82	HIS	-	EXPRESSION TAG	UNP B7XCV4
C	83	ILE	-	EXPRESSION TAG	UNP B7XCV4
C	84	GLU	-	EXPRESSION TAG	UNP B7XCV4
C	85	GLY	-	EXPRESSION TAG	UNP B7XCV4
C	86	ARG	-	EXPRESSION TAG	UNP B7XCV4
C	87	HIS	-	EXPRESSION TAG	UNP B7XCV4
C	88	MET	-	EXPRESSION TAG	UNP B7XCV4
C	253	SER	-	EXPRESSION TAG	UNP B7XCV4
C	254	ARG	-	EXPRESSION TAG	UNP B7XCV4
D	72	MET	-	EXPRESSION TAG	UNP B7XCV4
D	73	ASN	-	EXPRESSION TAG	UNP B7XCV4
D	74	HIS	-	EXPRESSION TAG	UNP B7XCV4
D	75	LYS	-	EXPRESSION TAG	UNP B7XCV4
D	76	VAL	-	EXPRESSION TAG	UNP B7XCV4
D	77	HIS	-	EXPRESSION TAG	UNP B7XCV4

Continued on next page...

Continued from previous page...

Chain	Residue	Modelled	Actual	Comment	Reference
D	78	HIS	-	EXPRESSION TAG	UNP B7XCV4
D	79	HIS	-	EXPRESSION TAG	UNP B7XCV4
D	80	HIS	-	EXPRESSION TAG	UNP B7XCV4
D	81	HIS	-	EXPRESSION TAG	UNP B7XCV4
D	82	HIS	-	EXPRESSION TAG	UNP B7XCV4
D	83	ILE	-	EXPRESSION TAG	UNP B7XCV4
D	84	GLU	-	EXPRESSION TAG	UNP B7XCV4
D	85	GLY	-	EXPRESSION TAG	UNP B7XCV4
D	86	ARG	-	EXPRESSION TAG	UNP B7XCV4
D	87	HIS	-	EXPRESSION TAG	UNP B7XCV4
D	88	MET	-	EXPRESSION TAG	UNP B7XCV4
D	253	SER	-	EXPRESSION TAG	UNP B7XCV4
D	254	ARG	-	EXPRESSION TAG	UNP B7XCV4

- Molecule 2 is N-ACETYL-D-GLUCOSAMINE (three-letter code: NAG) (formula: $C_8H_{15}NO_6$).



Mol	Chain	Residues	Atoms				ZeroOcc	AltConf
2	A	1	Total	C	N	O	0	0
			14	8	1	5		
2	A	1	Total	C	N	O	0	0
			15	8	1	6		
2	A	1	Total	C	N	O	0	0
			14	8	1	5		
2	A	1	Total	C	N	O	0	0
			15	8	1	6		
2	B	1	Total	C	N	O	0	0
			14	8	1	5		

Continued on next page...

Continued from previous page...

Mol	Chain	Residues	Atoms				ZeroOcc	AltConf
2	B	1	Total	C	N	O	0	0
			15	8	1	6		
2	B	1	Total	C	N	O	0	0
			14	8	1	5		
2	B	1	Total	C	N	O	0	0
			15	8	1	6		
2	C	1	Total	C	N	O	0	0
			14	8	1	5		
2	C	1	Total	C	N	O	0	0
			15	8	1	6		
2	D	1	Total	C	N	O	0	0
			14	8	1	5		
2	D	1	Total	C	N	O	0	0
			15	8	1	6		
2	D	1	Total	C	N	O	0	0
			14	8	1	5		
2	D	1	Total	C	N	O	0	0
			15	8	1	6		

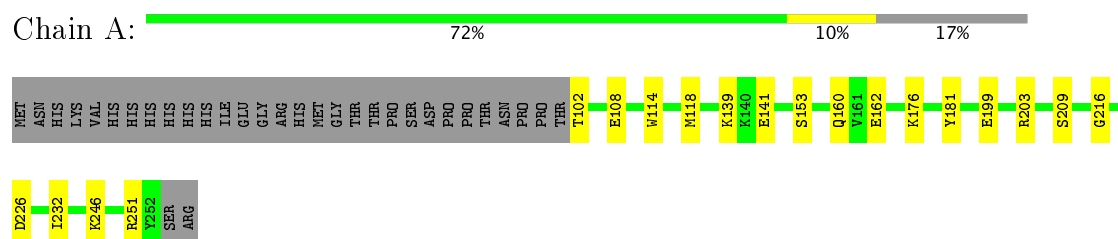
- Molecule 3 is water.

Mol	Chain	Residues	Atoms		ZeroOcc	AltConf
3	A	41	Total	O	0	0
			41	41		
3	B	79	Total	O	0	0
			79	79		
3	C	53	Total	O	0	0
			53	53		
3	D	79	Total	O	0	0
			79	79		

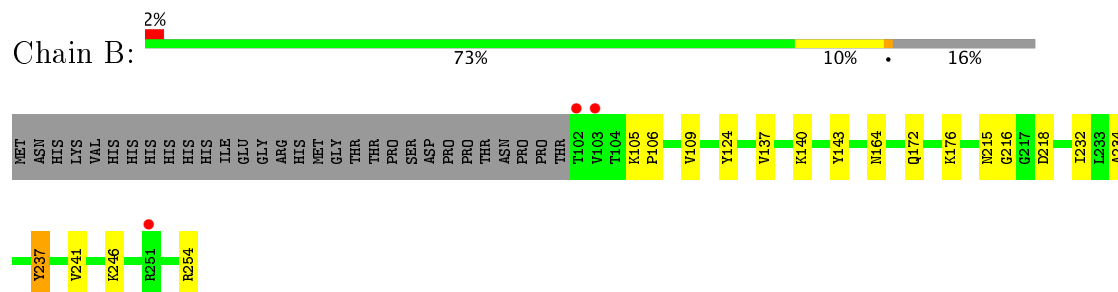
3 Residue-property plots [i](#)

These plots are drawn for all protein, RNA and DNA chains in the entry. The first graphic for a chain summarises the proportions of the various outlier classes displayed in the second graphic. The second graphic shows the sequence view annotated by issues in geometry and electron density. Residues are color-coded according to the number of geometric quality criteria for which they contain at least one outlier: green = 0, yellow = 1, orange = 2 and red = 3 or more. A red dot above a residue indicates a poor fit to the electron density ($RSRZ > 2$). Stretches of 2 or more consecutive residues without any outlier are shown as a green connector. Residues present in the sample, but not in the model, are shown in grey.

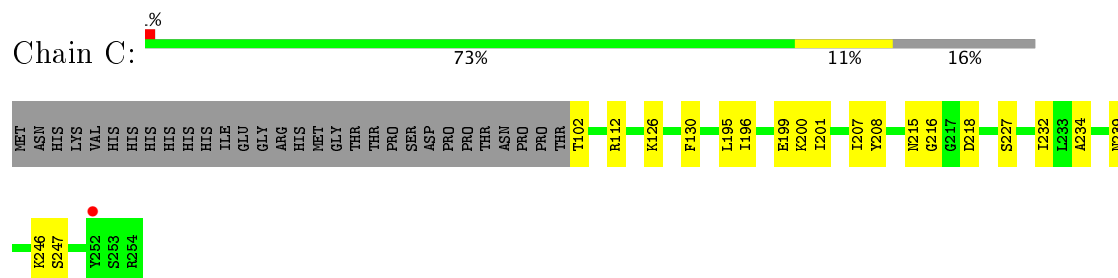
• Molecule 1: Lysozyme-like chitinolytic enzyme



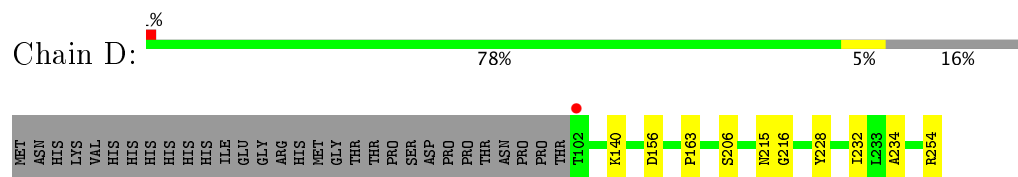
• Molecule 1: Lysozyme-like chitinolytic enzyme



• Molecule 1: Lysozyme-like chitinolytic enzyme



• Molecule 1: Lysozyme-like chitinolytic enzyme



4 Data and refinement statistics

Property	Value	Source
Space group	P 61 2 2	Depositor
Cell constants a, b, c, α , β , γ	99.04Å 99.04Å 242.14Å 90.00° 90.00° 120.00°	Depositor
Resolution (Å)	34.62 – 2.00 34.62 – 2.00	Depositor EDS
% Data completeness (in resolution range)	97.2 (34.62-2.00) 97.2 (34.62-2.00)	Depositor EDS
R_{merge}	0.14	Depositor
R_{sym}	(Not available)	Depositor
$\langle I/\sigma(I) \rangle$ ¹	5.01 (at 2.00Å)	Xtriage
Refinement program	REFMAC 5.5.0109	Depositor
R, R_{free}	0.180 , 0.226 0.181 , 0.227	Depositor DCC
R_{free} test set	2386 reflections (5.35%)	DCC
Wilson B-factor (Å ²)	26.0	Xtriage
Anisotropy	0.091	Xtriage
Bulk solvent k_{sol} (e/Å ³), B_{sol} (Å ²)	0.33 , 40.2	EDS
L-test for twinning ²	$\langle L \rangle = 0.42$, $\langle L^2 \rangle = 0.24$	Xtriage
Estimated twinning fraction	No twinning to report.	Xtriage
F_o, F_c correlation	0.96	EDS
Total number of atoms	5220	wwPDB-VP
Average B, all atoms (Å ²)	33.0	wwPDB-VP

Xtriage's analysis on translational NCS is as follows: *The largest off-origin peak in the Patterson function is 5.37% of the height of the origin peak. No significant pseudotranslation is detected.*

¹Intensities estimated from amplitudes.

²Theoretical values of $\langle |L| \rangle$, $\langle L^2 \rangle$ for acentric reflections are 0.5, 0.333 respectively for untwinned datasets, and 0.375, 0.2 for perfectly twinned datasets.

5 Model quality

5.1 Standard geometry

Bond lengths and bond angles in the following residue types are not validated in this section: NAG

The Z score for a bond length (or angle) is the number of standard deviations the observed value is removed from the expected value. A bond length (or angle) with $|Z| > 5$ is considered an outlier worth inspection. RMSZ is the root-mean-square of all Z scores of the bond lengths (or angles).

Mol	Chain	Bond lengths		Bond angles	
		RMSZ	$\# Z > 5$	RMSZ	$\# Z > 5$
1	A	0.97	2/1211 (0.2%)	0.90	0/1643
1	B	1.08	1/1229 (0.1%)	0.92	1/1665 (0.1%)
1	C	1.02	0/1228	0.86	0/1665
1	D	1.20	1/1229 (0.1%)	0.93	0/1665
All	All	1.07	4/4897 (0.1%)	0.90	1/6638 (0.0%)

All (4) bond length outliers are listed below:

Mol	Chain	Res	Type	Atoms	Z	Observed(Å)	Ideal(Å)
1	A	141	GLU	CB-CG	5.52	1.62	1.52
1	D	228	TYR	CE2-CZ	5.20	1.45	1.38
1	B	237	TYR	CD1-CE1	5.17	1.47	1.39
1	A	181	TYR	CD2-CE2	5.09	1.47	1.39

All (1) bond angle outliers are listed below:

Mol	Chain	Res	Type	Atoms	Z	Observed(°)	Ideal(°)
1	B	218	ASP	CB-CG-OD2	5.57	123.31	118.30

There are no chirality outliers.

There are no planarity outliers.

5.2 Too-close contacts

In the following table, the Non-H and H(model) columns list the number of non-hydrogen atoms and hydrogen atoms in the chain respectively. The H(added) column lists the number of hydrogen atoms added and optimized by MolProbity. The Clashes column lists the number of clashes within the asymmetric unit, whereas Symm-Clashes lists symmetry related clashes.

Mol	Chain	Non-H	H(model)	H(added)	Clashes	Symm-Clashes
1	A	1178	0	1107	10	0
1	B	1196	0	1125	9	0
1	C	1195	0	1125	9	0
1	D	1196	0	1125	5	0
2	A	58	0	54	0	0
2	B	58	0	54	0	0
2	C	29	0	27	0	0
2	D	58	0	54	1	0
3	A	41	0	0	0	0
3	B	79	0	0	1	0
3	C	53	0	0	0	0
3	D	79	0	0	0	0
All	All	5220	0	4671	33	0

The all-atom clashscore is defined as the number of clashes found per 1000 atoms (including hydrogen atoms). The all-atom clashscore for this structure is 3.

All (33) close contacts within the same asymmetric unit are listed below, sorted by their clash magnitude.

Atom-1	Atom-2	Interatomic distance (Å)	Clash overlap (Å)
1:A:114:TRP:CZ2	1:A:118:MET:CE	2.84	0.60
1:A:114:TRP:CZ2	1:A:118:MET:HE2	2.38	0.58
1:B:215:ASN:HD22	1:B:234:ALA:HA	1.69	0.57
1:C:196:ILE:O	1:C:200:LYS:HG2	2.04	0.57
1:B:105:LYS:HG2	1:B:106:PRO:O	2.07	0.55
1:C:200:LYS:NZ	1:C:218:ASP:OD1	2.36	0.54
1:A:153:SER:OG	1:A:160:GLN:NE2	2.40	0.54
1:B:124:TYR:CZ	1:B:176:LYS:HE2	2.43	0.54
1:B:106:PRO:HB2	1:B:109:VAL:HG23	1.96	0.47
1:D:206:SER:HB3	1:D:254:ARG:HG3	1.98	0.46
1:B:216:GLY:HA2	1:B:232:ILE:HG21	1.96	0.46
1:D:216:GLY:HA2	1:D:232:ILE:HG21	1.98	0.45
1:D:215:ASN:HD22	1:D:234:ALA:HA	1.81	0.45
1:C:246:LYS:HA	1:C:246:LYS:HD2	1.77	0.45
1:C:208:TYR:HE1	1:C:239:ASN:HD22	1.63	0.45
1:B:137:VAL:HG22	1:B:241:VAL:HG11	2.00	0.44
1:A:108:GLU:OE2	1:A:139:LYS:NZ	2.37	0.44
1:A:203:ARG:HH11	1:A:203:ARG:HG2	1.83	0.44
1:C:195:LEU:C	1:C:195:LEU:HD23	2.38	0.44
1:A:114:TRP:CE2	1:A:118:MET:HE2	2.53	0.44
1:C:216:GLY:HA2	1:C:232:ILE:HG21	2.00	0.44
1:D:140:LYS:HE3	2:D:303:NAG:O6	2.18	0.44

Continued on next page...

Continued from previous page...

Atom-1	Atom-2	Interatomic distance (Å)	Clash overlap (Å)
1:A:216:GLY:HA2	1:A:232:ILE:HG21	2.00	0.43
1:B:215:ASN:HB2	1:B:237:TYR:CD2	2.55	0.42
1:C:201:ILE:HG12	1:C:207:ILE:HA	2.02	0.42
1:C:215:ASN:HD22	1:C:234:ALA:HA	1.84	0.42
1:D:156:ASP:OD1	1:D:163:PRO:HD3	2.19	0.42
1:A:203:ARG:NH1	1:A:203:ARG:HG2	2.34	0.41
1:B:164:ASN:HB2	3:B:434:HOH:O	2.19	0.41
1:A:162:GLU:OE2	1:A:226:ASP:HB2	2.19	0.41
1:B:172:GLN:HB3	1:B:172:GLN:HE21	1.68	0.41
1:A:246:LYS:HD2	1:A:246:LYS:HA	1.85	0.41
1:C:126:LYS:HG3	1:C:130:PHE:HB2	2.03	0.40

There are no symmetry-related clashes.

5.3 Torsion angles [i](#)

5.3.1 Protein backbone [i](#)

In the following table, the Percentiles column shows the percent Ramachandran outliers of the chain as a percentile score with respect to all X-ray entries followed by that with respect to entries of similar resolution.

The Analysed column shows the number of residues for which the backbone conformation was analysed, and the total number of residues.

Mol	Chain	Analysed	Favoured	Allowed	Outliers	Percentiles	
1	A	149/183 (81%)	146 (98%)	3 (2%)	0	100	100
1	B	151/183 (82%)	148 (98%)	3 (2%)	0	100	100
1	C	151/183 (82%)	148 (98%)	3 (2%)	0	100	100
1	D	151/183 (82%)	150 (99%)	1 (1%)	0	100	100
All	All	602/732 (82%)	592 (98%)	10 (2%)	0	100	100

There are no Ramachandran outliers to report.

5.3.2 Protein sidechains [i](#)

In the following table, the Percentiles column shows the percent sidechain outliers of the chain as a percentile score with respect to all X-ray entries followed by that with respect to entries of similar resolution.

The Analysed column shows the number of residues for which the sidechain conformation was analysed, and the total number of residues.

Mol	Chain	Analysed	Rotameric	Outliers	Percentiles	
1	A	120/150 (80%)	115 (96%)	5 (4%)	34	30
1	B	122/150 (81%)	118 (97%)	4 (3%)	43	41
1	C	122/150 (81%)	117 (96%)	5 (4%)	35	31
1	D	122/150 (81%)	122 (100%)	0	100	100
All	All	486/600 (81%)	472 (97%)	14 (3%)	48	47

All (14) residues with a non-rotameric sidechain are listed below:

Mol	Chain	Res	Type
1	A	102	THR
1	A	176	LYS
1	A	199	GLU
1	A	209	SER
1	A	251	ARG
1	B	140	LYS
1	B	143	TYR
1	B	246	LYS
1	B	254	ARG
1	C	102	THR
1	C	112	ARG
1	C	199	GLU
1	C	227	SER
1	C	247	SER

Some sidechains can be flipped to improve hydrogen bonding and reduce clashes. All (14) such sidechains are listed below:

Mol	Chain	Res	Type
1	A	160	GLN
1	A	239	ASN
1	B	160	GLN
1	B	172	GLN
1	B	213	HIS
1	B	215	ASN
1	C	160	GLN
1	C	215	ASN
1	C	239	ASN
1	D	160	GLN
1	D	167	ASN

Continued on next page...

Continued from previous page...

Mol	Chain	Res	Type
1	D	198	ASN
1	D	215	ASN
1	D	239	ASN

5.3.3 RNA [i](#)

There are no RNA molecules in this entry.

5.4 Non-standard residues in protein, DNA, RNA chains [i](#)

There are no non-standard protein/DNA/RNA residues in this entry.

5.5 Carbohydrates [i](#)

There are no carbohydrates in this entry.

5.6 Ligand geometry [i](#)

14 ligands are modelled in this entry.

In the following table, the Counts columns list the number of bonds (or angles) for which Mogul statistics could be retrieved, the number of bonds (or angles) that are observed in the model and the number of bonds (or angles) that are defined in the Chemical Component Dictionary. The Link column lists molecule types, if any, to which the group is linked. The Z score for a bond length (or angle) is the number of standard deviations the observed value is removed from the expected value. A bond length (or angle) with $|Z| > 2$ is considered an outlier worth inspection. RMSZ is the root-mean-square of all Z scores of the bond lengths (or angles).

Mol	Type	Chain	Res	Link	Bond lengths			Bond angles		
					Counts	RMSZ	# $ Z > 2$	Counts	RMSZ	# $ Z > 2$
2	NAG	A	301	2	14,14,15	0.91	1 (7%)	15,19,21	2.48	3 (20%)
2	NAG	A	302	2	15,15,15	1.17	2 (13%)	21,21,21	2.30	7 (33%)
2	NAG	A	303	2	14,14,15	0.76	0	15,19,21	2.21	3 (20%)
2	NAG	A	304	2	15,15,15	0.84	0	21,21,21	2.98	7 (33%)
2	NAG	B	301	2	14,14,15	0.69	0	15,19,21	0.86	0
2	NAG	B	302	2	15,15,15	0.64	0	21,21,21	1.40	4 (19%)
2	NAG	B	303	2	14,14,15	0.97	0	15,19,21	2.22	7 (46%)
2	NAG	B	304	2	15,15,15	0.80	0	21,21,21	3.19	8 (38%)
2	NAG	C	301	2	14,14,15	0.74	0	15,19,21	3.44	5 (33%)

Mol	Type	Chain	Res	Link	Bond lengths			Bond angles		
					Counts	RMSZ	# Z > 2	Counts	RMSZ	# Z > 2
2	NAG	C	302	2	15,15,15	0.76	0	21,21,21	1.22	2 (9%)
2	NAG	D	301	2	14,14,15	1.02	1 (7%)	15,19,21	2.24	5 (33%)
2	NAG	D	302	2	15,15,15	0.82	0	21,21,21	1.43	3 (14%)
2	NAG	D	303	2	14,14,15	0.98	0	15,19,21	1.47	1 (6%)
2	NAG	D	304	2	15,15,15	0.90	0	21,21,21	3.28	10 (47%)

In the following table, the Chirals column lists the number of chiral outliers, the number of chiral centers analysed, the number of these observed in the model and the number defined in the Chemical Component Dictionary. Similar counts are reported in the Torsion and Rings columns. '-' means no outliers of that kind were identified.

Mol	Type	Chain	Res	Link	Chirals	Torsions	Rings
2	NAG	A	301	2	-	0/6/23/26	0/1/1/1
2	NAG	A	302	2	-	0/6/26/26	0/1/1/1
2	NAG	A	303	2	-	0/6/23/26	0/1/1/1
2	NAG	A	304	2	-	0/6/26/26	0/1/1/1
2	NAG	B	301	2	-	0/6/23/26	0/1/1/1
2	NAG	B	302	2	-	0/6/26/26	0/1/1/1
2	NAG	B	303	2	-	0/6/23/26	0/1/1/1
2	NAG	B	304	2	-	0/6/26/26	0/1/1/1
2	NAG	C	301	2	-	0/6/23/26	0/1/1/1
2	NAG	C	302	2	-	0/6/26/26	0/1/1/1
2	NAG	D	301	2	-	0/6/23/26	0/1/1/1
2	NAG	D	302	2	-	0/6/26/26	0/1/1/1
2	NAG	D	303	2	-	0/6/23/26	0/1/1/1
2	NAG	D	304	2	-	0/6/26/26	0/1/1/1

All (4) bond length outliers are listed below:

Mol	Chain	Res	Type	Atoms	Z	Observed(Å)	Ideal(Å)
2	A	301	NAG	O5-C1	-2.59	1.39	1.43
2	A	302	NAG	C2-N2	-2.44	1.41	1.45
2	A	302	NAG	C1-C2	2.79	1.56	1.52
2	D	301	NAG	C1-C2	2.91	1.56	1.52

All (65) bond angle outliers are listed below:

Mol	Chain	Res	Type	Atoms	Z	Observed(°)	Ideal(°)
2	C	301	NAG	C4-C3-C2	-8.85	98.04	111.02
2	D	304	NAG	C1-C2-C3	-8.53	98.91	110.54
2	B	304	NAG	C1-O5-C5	-8.53	98.01	113.39

Continued on next page...

Continued from previous page...

Mol	Chain	Res	Type	Atoms	Z	Observed(°)	Ideal(°)
2	A	304	NAG	O4-C4-C3	-6.39	96.45	110.36
2	D	304	NAG	C1-O5-C5	-6.34	101.96	113.39
2	B	304	NAG	O4-C4-C3	-6.06	97.17	110.36
2	B	304	NAG	C1-C2-C3	-5.87	102.54	110.54
2	D	301	NAG	C6-C5-C4	-4.61	102.21	113.00
2	A	302	NAG	C1-C2-N2	-4.10	105.97	110.73
2	D	303	NAG	C1-C2-N2	-3.49	104.53	110.49
2	C	301	NAG	C1-C2-N2	-3.22	104.98	110.49
2	B	304	NAG	O5-C1-C2	-3.11	106.39	109.52
2	A	303	NAG	O3-C3-C4	-3.11	103.60	110.36
2	B	303	NAG	C1-C2-N2	-3.10	105.20	110.49
2	A	304	NAG	O3-C3-C2	-3.00	103.53	109.61
2	B	302	NAG	C1-O5-C5	-2.83	108.29	113.39
2	A	302	NAG	C2-N2-C7	-2.83	116.04	123.19
2	B	303	NAG	O6-C6-C5	-2.81	101.90	111.34
2	D	304	NAG	C4-C3-C2	-2.75	106.25	110.33
2	C	302	NAG	C2-N2-C7	-2.65	116.48	123.19
2	B	303	NAG	O7-C7-C8	-2.52	117.47	122.06
2	B	303	NAG	C4-C3-C2	-2.43	107.45	111.02
2	D	304	NAG	O4-C4-C3	-2.29	105.38	110.36
2	B	302	NAG	O6-C6-C5	-2.25	103.78	111.34
2	A	304	NAG	C2-N2-C7	-2.20	117.61	123.19
2	D	304	NAG	O5-C1-C2	-2.14	107.37	109.52
2	A	304	NAG	O1-C1-O5	-2.13	103.89	110.20
2	D	302	NAG	O7-C7-C8	-2.09	118.25	122.06
2	D	301	NAG	O5-C1-C2	2.05	114.32	111.47
2	B	302	NAG	C3-C2-N2	2.07	114.57	110.61
2	A	301	NAG	O3-C3-C2	2.07	113.82	109.39
2	B	302	NAG	C1-C2-N2	2.20	113.28	110.73
2	D	302	NAG	C1-C2-C3	2.32	113.71	110.54
2	D	301	NAG	O4-C4-C3	2.34	115.44	110.36
2	B	304	NAG	C3-C4-C5	2.38	114.42	110.22
2	C	301	NAG	C2-N2-C7	2.41	126.46	122.94
2	D	302	NAG	C1-C2-N2	2.58	113.72	110.73
2	A	304	NAG	C1-O5-C5	2.69	118.24	113.39
2	A	302	NAG	O5-C5-C4	2.69	114.62	109.66
2	B	303	NAG	O5-C1-C2	2.72	115.26	111.47
2	B	303	NAG	C8-C7-N2	2.76	121.09	116.11
2	B	304	NAG	C1-C2-N2	2.93	114.13	110.73
2	D	304	NAG	C3-C2-N2	3.01	116.38	110.61
2	A	301	NAG	C3-C4-C5	3.06	115.61	110.22
2	D	301	NAG	C3-C4-C5	3.20	115.85	110.22

Continued on next page...

Continued from previous page...

Mol	Chain	Res	Type	Atoms	Z	Observed(°)	Ideal(°)
2	D	304	NAG	O1-C1-C2	3.26	115.98	109.22
2	D	304	NAG	O1-C1-O5	3.38	120.21	110.20
2	A	303	NAG	O4-C4-C5	3.40	117.85	109.28
2	A	302	NAG	C3-C4-C5	3.63	116.61	110.22
2	B	304	NAG	O1-C1-C2	3.77	117.05	109.22
2	C	302	NAG	O4-C4-C3	3.86	118.77	110.36
2	B	304	NAG	O4-C4-C5	3.90	119.12	109.28
2	A	302	NAG	C1-C2-C3	4.00	116.00	110.54
2	A	302	NAG	O5-C1-C2	4.04	113.58	109.52
2	D	301	NAG	C1-O5-C5	4.65	118.57	112.17
2	C	301	NAG	O5-C1-C2	4.72	118.03	111.47
2	B	303	NAG	C1-O5-C5	4.72	118.67	112.17
2	D	304	NAG	C1-C2-N2	4.88	116.38	110.73
2	A	302	NAG	O4-C4-C5	5.03	121.95	109.28
2	A	304	NAG	C1-C2-C3	5.12	117.53	110.54
2	D	304	NAG	C3-C4-C5	5.27	119.50	110.22
2	A	303	NAG	C1-O5-C5	5.57	119.85	112.17
2	C	301	NAG	C1-O5-C5	6.48	121.09	112.17
2	A	301	NAG	C1-O5-C5	7.87	123.01	112.17
2	A	304	NAG	O5-C1-C2	9.23	118.79	109.52

There are no chirality outliers.

There are no torsion outliers.

There are no ring outliers.

1 monomer is involved in 1 short contact:

Mol	Chain	Res	Type	Clashes	Symm-Clashes
2	D	303	NAG	1	0

5.7 Other polymers

There are no such residues in this entry.

5.8 Polymer linkage issues

There are no chain breaks in this entry.

6 Fit of model and data [i](#)

6.1 Protein, DNA and RNA chains [i](#)

In the following table, the column labelled ‘#RSRZ> 2’ contains the number (and percentage) of RSRZ outliers, followed by percent RSRZ outliers for the chain as percentile scores relative to all X-ray entries and entries of similar resolution. The OWAB column contains the minimum, median, 95th percentile and maximum values of the occupancy-weighted average B-factor per residue. The column labelled ‘Q< 0.9’ lists the number of (and percentage) of residues with an average occupancy less than 0.9.

Mol	Chain	Analysed	<RSRZ>	#RSRZ>2	OWAB(Å ²)	Q<0.9
1	A	151/183 (82%)	-0.48	0 100 100	26, 36, 58, 72	0
1	B	153/183 (83%)	-0.33	3 (1%) 65 65	17, 30, 49, 73	0
1	C	153/183 (83%)	-0.59	1 (0%) 87 87	21, 32, 54, 61	0
1	D	153/183 (83%)	-0.69	1 (0%) 87 87	15, 24, 36, 57	0
All	All	610/732 (83%)	-0.52	5 (0%) 86 85	15, 31, 54, 73	0

All (5) RSRZ outliers are listed below:

Mol	Chain	Res	Type	RSRZ
1	B	102	THR	4.9
1	D	102	THR	3.7
1	B	103	VAL	2.3
1	C	252	TYR	2.2
1	B	251	ARG	2.0

6.2 Non-standard residues in protein, DNA, RNA chains [i](#)

There are no non-standard protein/DNA/RNA residues in this entry.

6.3 Carbohydrates [i](#)

There are no carbohydrates in this entry.

6.4 Ligands [i](#)

In the following table, the Atoms column lists the number of modelled atoms in the group and the number defined in the chemical component dictionary. LLDF column lists the quality of electron density of the group with respect to its neighbouring residues in protein, DNA or RNA chains.

The B-factors column lists the minimum, median, 95th percentile and maximum values of B factors of atoms in the group. The column labelled 'Q< 0.9' lists the number of atoms with occupancy less than 0.9.

Mol	Type	Chain	Res	Atoms	RSCC	RSR	LLDF	B-factors(Å ²)	Q<0.9
2	NAG	A	301	14/15	0.93	0.15	4.81	48,54,58,58	0
2	NAG	A	304	15/15	0.87	0.23	4.35	43,63,71,73	0
2	NAG	B	301	14/15	0.95	0.16	3.18	29,38,42,42	0
2	NAG	D	304	15/15	0.94	0.14	2.25	20,36,54,55	0
2	NAG	C	301	14/15	0.88	0.15	1.73	52,56,60,62	0
2	NAG	D	301	14/15	0.95	0.13	1.73	29,33,41,43	0
2	NAG	A	303	14/15	0.91	0.13	1.35	25,37,44,47	0
2	NAG	A	302	15/15	0.91	0.10	1.02	34,38,42,45	0
2	NAG	D	302	15/15	0.97	0.09	0.38	16,26,28,30	0
2	NAG	C	302	15/15	0.95	0.09	0.18	34,40,45,49	0
2	NAG	B	302	15/15	0.97	0.07	-0.80	29,31,35,35	0
2	NAG	B	304	15/15	0.95	0.09	-0.85	20,35,44,46	0
2	NAG	D	303	14/15	0.98	0.06	-0.86	14,17,22,24	0
2	NAG	B	303	14/15	0.96	0.07	-1.09	23,26,30,30	0

6.5 Other polymers [i](#)

There are no such residues in this entry.