



Full wwPDB X-ray Structure Validation Report ⓘ

Nov 13, 2017 – 05:49 PM EST

PDB ID : 3W6Y
Title : Structure of Trypanosoma cruzi dihydroorotate dehydrogenase in complex with TT2-2-199
Authors : Inaoka, D.K.; Iida, M.; Tabuchi, T.; Lee, N.; Hashimoto, S.; Matsuoka, S.; Kuranaga, T.; Shiba, T.; Sakamoto, K.; Suzuki, S.; Balogun, E.O.; Nara, T.; Aoki, T.; Inoue, M.; Honma, T.; Tanaka, A.; Harada, S.; Kita, K.
Deposited on : unknown
Resolution : 2.68 Å(reported)

This is a Full wwPDB X-ray Structure Validation Report for a publicly released PDB entry.

We welcome your comments at validation@mail.wwpdb.org

A user guide is available at

<http://wwpdb.org/validation/2016/XrayValidationReportHelp>

with specific help available everywhere you see the ⓘ symbol.

The following versions of software and data (see [references ⓘ](#)) were used in the production of this report:

MolProbity : 4.02b-467
Mogul : 1.7.2 (RC1), CSD as538be (2017)
Xtriage (Phenix) : 1.9-1692
EDS : rb-20030345
Percentile statistics : 20161228.v01 (using entries in the PDB archive December 28th 2016)
Refmac : 5.8.0135
CCP4 : 6.5.0
Ideal geometry (proteins) : Engh & Huber (2001)
Ideal geometry (DNA, RNA) : Parkinson et al. (1996)
Validation Pipeline (wwPDB-VP) : rb-20030345

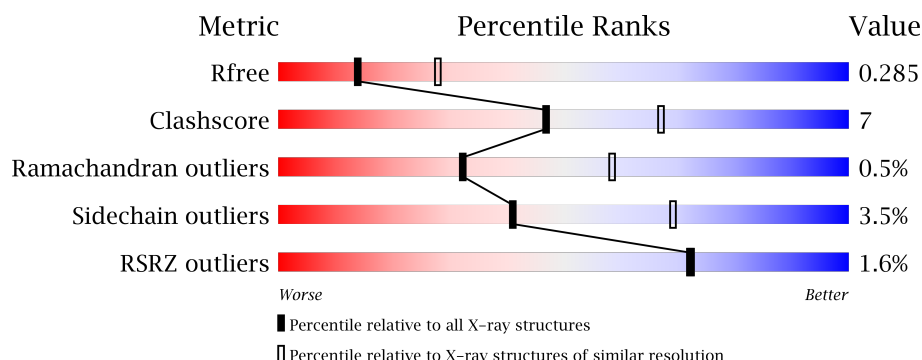
1 Overall quality at a glance

The following experimental techniques were used to determine the structure:

X-RAY DIFFRACTION

The reported resolution of this entry is 2.68 Å.

Percentile scores (ranging between 0-100) for global validation metrics of the entry are shown in the following graphic. The table shows the number of entries on which the scores are based.



Metric	Whole archive (#Entries)	Similar resolution (#Entries, resolution range(Å))
R_{free}	100719	3050 (2.70-2.66)
Clashscore	112137	3418 (2.70-2.66)
Ramachandran outliers	110173	3367 (2.70-2.66)
Sidechain outliers	110143	3367 (2.70-2.66)
RSRZ outliers	101464	3069 (2.70-2.66)

The table below summarises the geometric issues observed across the polymeric chains and their fit to the electron density. The red, orange, yellow and green segments on the lower bar indicate the fraction of residues that contain outliers for ≥ 3 , 2, 1 and 0 types of geometric quality criteria. A grey segment represents the fraction of residues that are not modelled. The numeric value for each fraction is indicated below the corresponding segment, with a dot representing fractions $\leq 5\%$. The upper red bar (where present) indicates the fraction of residues that have poor fit to the electron density. The numeric value is given above the bar.

Mol	Chain	Length	Quality of chain
1	A	313	
1	B	313	

The following table lists non-polymeric compounds, carbohydrate monomers and non-standard residues in protein, DNA, RNA chains that are outliers for geometric or electron-density-fit criteria:

Mol	Type	Chain	Res	Chirality	Geometry	Clashes	Electron density
3	GOL	A	402	-	-	-	X
3	GOL	A	405	-	-	-	X
3	GOL	A	408	-	-	-	X
3	GOL	A	410	-	-	-	X
3	GOL	A	411	-	-	-	X
3	GOL	B	402	-	-	-	X
3	GOL	B	404	-	-	-	X
3	GOL	B	406	-	-	-	X
3	GOL	B	407	-	-	-	X
3	GOL	B	408	-	-	-	X
3	GOL	B	411	-	-	-	X

2 Entry composition [i](#)

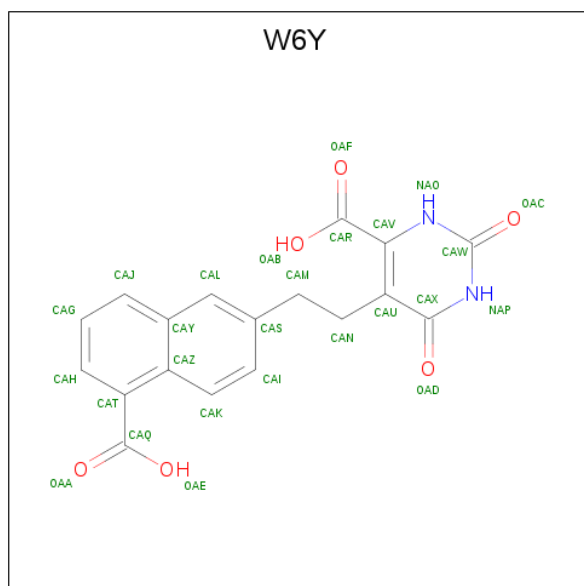
There are 6 unique types of molecules in this entry. The entry contains 5280 atoms, of which 0 are hydrogens and 0 are deuteriums.

In the tables below, the ZeroOcc column contains the number of atoms modelled with zero occupancy, the AltConf column contains the number of residues with at least one atom in alternate conformation and the Trace column contains the number of residues modelled with at most 2 atoms.

- Molecule 1 is a protein called Dihydroorotate dehydrogenase (fumarate).

Mol	Chain	Residues	Atoms					ZeroOcc	AltConf	Trace
1	A	313	Total	C	N	O	S	0	0	0
			2388	1530	396	444	18			
1	B	313	Total	C	N	O	S	0	0	0
			2388	1530	396	444	18			

- Molecule 2 is 5-[2-(5-carboxynaphthalen-2-yl)ethyl]-2,6-dioxo-1,2,3,6-tetrahydropyrimidine-4-carboxylic acid (three-letter code: W6Y) (formula: C₁₈H₁₄N₂O₆).



Mol	Chain	Residues	Atoms				ZeroOcc	AltConf
2	A	1	Total	C	N	O	0	0
			26	18	2	6		
2	B	1	Total	C	N	O	0	0
			26	18	2	6		

- Molecule 3 is GLYCEROL (three-letter code: GOL) (formula: C₃H₈O₃).



Mol	Chain	Residues	Atoms			ZeroOcc	AltConf
3	A	1	Total	C	O	0	0
			6	3	3		
3	A	1	Total	C	O	0	0
			6	3	3		
3	A	1	Total	C	O	0	0
			6	3	3		
3	A	1	Total	C	O	0	0
			6	3	3		
3	A	1	Total	C	O	0	0
			6	3	3		
3	A	1	Total	C	O	0	0
			6	3	3		
3	A	1	Total	C	O	0	0
			6	3	3		
3	A	1	Total	C	O	0	0
			6	3	3		
3	B	1	Total	C	O	0	0
			6	3	3		
3	B	1	Total	C	O	0	0
			6	3	3		
3	B	1	Total	C	O	0	0
			6	3	3		

Continued on next page...

[illegible]

-
- The diagram illustrates the chemical structure of Flavin Mononucleotide (FMN). It features an isoalloxazine ring system (rings 1, 2, and 4) with atoms N1, N3, N5, N10, C2, C4, C6, C7, C8, C9, C10, C18, and C19. The ribitol chain is attached to the ring at C10, with carbons labeled C1' through C5'. The ribitol chain is linked to a phosphate group (P) via an ester bond. The phosphate group is further linked to a pyrophosphate group (P-O-P) and a terminal phosphate group (O3P). The structure is shown in a 3D representation with stereochemistry indicated by wedges and dashes.

Mol	Chain	Residues	Atoms					ZeroOcc	AltConf
4	A	1	Total 31	C 17	N 4	O 9	P 1	0	0
4	B	1	Total 31	C 17	N 4	O 9	P 1	0	0

- 
- WORLD WIDE
PDB
PROTEIN DATA BANK



Mol	Chain	Residues	Atoms			ZeroOcc	AltConf
5	A	1	Total	Co	N	0	0
			7	1	6		

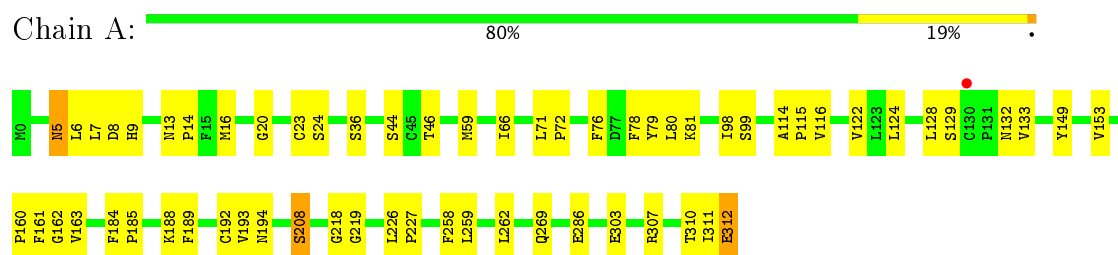
- Molecule 6 is water.

Mol	Chain	Residues	Atoms		ZeroOcc	AltConf
6	A	144	Total	O	0	0
			144	144		
6	B	113	Total	O	0	0
			113	113		

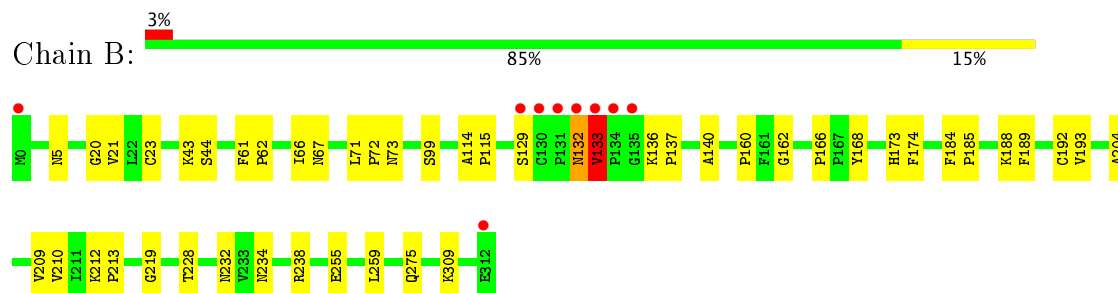
3 Residue-property plots [i](#)

These plots are drawn for all protein, RNA and DNA chains in the entry. The first graphic for a chain summarises the proportions of the various outlier classes displayed in the second graphic. The second graphic shows the sequence view annotated by issues in geometry and electron density. Residues are color-coded according to the number of geometric quality criteria for which they contain at least one outlier: green = 0, yellow = 1, orange = 2 and red = 3 or more. A red dot above a residue indicates a poor fit to the electron density ($RSRZ > 2$). Stretches of 2 or more consecutive residues without any outlier are shown as a green connector. Residues present in the sample, but not in the model, are shown in grey.

- Molecule 1: Dihydroorotate dehydrogenase (fumarate)



- Molecule 1: Dihydroorotate dehydrogenase (fumarate)



4 Data and refinement statistics

Property	Value	Source
Space group	P 21 21 21	Depositor
Cell constants a, b, c, α , β , γ	68.03Å 71.84Å 129.53Å 90.00° 90.00° 90.00°	Depositor
Resolution (Å)	39.31 – 2.68 39.28 – 2.68	Depositor EDS
% Data completeness (in resolution range)	97.5 (39.31-2.68) 97.5 (39.28-2.68)	Depositor EDS
R_{merge}	0.15	Depositor
R_{sym}	(Not available)	Depositor
$\langle I/\sigma(I) \rangle$ ¹	4.41 (at 2.69Å)	Xtriage
Refinement program	REFMAC 5.7.0032	Depositor
R, R_{free}	0.195 , 0.282 0.201 , 0.285	Depositor DCC
R_{free} test set	916 reflections (5.38%)	DCC
Wilson B-factor (Å ²)	24.4	Xtriage
Anisotropy	0.188	Xtriage
Bulk solvent k_{sol} (e/Å ³), B_{sol} (Å ²)	0.34 , 39.8	EDS
L-test for twinning ²	$\langle L \rangle = 0.49$, $\langle L^2 \rangle = 0.32$	Xtriage
Estimated twinning fraction	No twinning to report.	Xtriage
F_o, F_c correlation	0.93	EDS
Total number of atoms	5280	wwPDB-VP
Average B, all atoms (Å ²)	23.0	wwPDB-VP

Xtriage's analysis on translational NCS is as follows: *The analyses of the Patterson function reveals a significant off-origin peak that is 29.90 % of the origin peak, indicating pseudo translational symmetry. The chance of finding a peak of this or larger height randomly in a structure without pseudo translational symmetry is equal to 1.4335e-03. The detected translational NCS is most likely also responsible for the elevated intensity ratio.*

¹ Intensities estimated from amplitudes.

² Theoretical values of $\langle |L| \rangle$, $\langle L^2 \rangle$ for acentric reflections are 0.5, 0.333 respectively for untwinned datasets, and 0.375, 0.2 for perfectly twinned datasets.

5 Model quality

5.1 Standard geometry

Bond lengths and bond angles in the following residue types are not validated in this section: FMN, GOL, W6Y, NCO

The Z score for a bond length (or angle) is the number of standard deviations the observed value is removed from the expected value. A bond length (or angle) with $|Z| > 5$ is considered an outlier worth inspection. RMSZ is the root-mean-square of all Z scores of the bond lengths (or angles).

Mol	Chain	Bond lengths		Bond angles	
		RMSZ	# Z >5	RMSZ	# Z >5
1	A	0.56	0/2440	0.72	0/3305
1	B	0.55	0/2440	0.73	0/3305
All	All	0.56	0/4880	0.72	0/6610

There are no bond length outliers.

There are no bond angle outliers.

There are no chirality outliers.

There are no planarity outliers.

5.2 Too-close contacts

In the following table, the Non-H and H(model) columns list the number of non-hydrogen atoms and hydrogen atoms in the chain respectively. The H(added) column lists the number of hydrogen atoms added and optimized by MolProbity. The Clashes column lists the number of clashes within the asymmetric unit, whereas Symm-Clashes lists symmetry related clashes.

Mol	Chain	Non-H	H(model)	H(added)	Clashes	Symm-Clashes
1	A	2388	0	2391	39	0
1	B	2388	0	2391	35	0
2	A	26	0	12	1	0
2	B	26	0	12	1	0
3	A	66	0	88	1	0
3	B	60	0	80	1	0
4	A	31	0	19	2	0
4	B	31	0	19	2	0
5	A	7	0	0	0	0
6	A	144	0	0	2	0
6	B	113	0	0	2	0
All	All	5280	0	5012	71	0

The all-atom clashscore is defined as the number of clashes found per 1000 atoms (including hydrogen atoms). The all-atom clashscore for this structure is 7.

All (71) close contacts within the same asymmetric unit are listed below, sorted by their clash magnitude.

Atom-1	Atom-2	Interatomic distance (Å)	Clash overlap (Å)
1:A:311:ILE:HG22	1:A:312:GLU:HG3	1.70	0.73
1:B:132:ASN:HB2	1:B:133:VAL:HG13	1.70	0.72
1:A:7:LEU:O	1:A:9:HIS:HD2	1.73	0.70
1:A:71:LEU:HD22	2:A:401:W6Y:H5	1.80	0.64
1:A:13:ASN:ND2	1:A:286:GLU:OE1	2.32	0.63
1:B:20:GLY:HA3	4:B:412:FMN:N5	2.15	0.62
1:B:132:ASN:CB	1:B:133:VAL:HG13	2.32	0.60
1:A:208:SER:HB2	1:B:309:LYS:HB2	1.84	0.59
1:A:259:LEU:HD21	1:B:204:ALA:HB2	1.82	0.59
1:B:66:ILE:HA	1:B:219:GLY:O	2.04	0.58
1:B:21:VAL:HG13	1:B:275:GLN:HE21	1.68	0.58
1:A:7:LEU:O	1:A:9:HIS:CD2	2.56	0.57
1:A:226:LEU:HB3	1:A:227:PRO:HD3	1.86	0.56
1:B:160:PRO:HB3	1:B:188:LYS:HG3	1.87	0.56
1:A:129:SER:HB3	1:A:194:ASN:HD22	1.73	0.54
1:A:80:LEU:HD11	1:A:116:VAL:HG21	1.90	0.53
1:A:310:THR:HA	1:B:209:VAL:HG22	1.90	0.53
1:B:162:GLY:HA3	1:B:189:PHE:CZ	2.44	0.52
3:A:411:GOL:O2	1:B:173:HIS:HE1	1.92	0.52
1:A:194:ASN:HA	4:A:413:FMN:O3'	2.11	0.51
1:B:132:ASN:ND2	1:B:137:PRO:O	2.45	0.50
1:A:16:MET:HG3	1:A:269:GLN:HG2	1.94	0.50
1:A:124:LEU:HD23	1:A:161:PHE:CB	2.41	0.50
1:B:162:GLY:HA3	1:B:189:PHE:CE1	2.47	0.49
1:B:71:LEU:HB2	2:B:401:W6Y:H5	1.94	0.49
1:A:5:ASN:HD22	1:A:5:ASN:N	2.09	0.49
1:A:218:GLY:HA2	6:A:507:HOH:O	2.13	0.48
1:B:210:VAL:HG22	6:B:501:HOH:O	2.12	0.48
1:B:43:LYS:HG3	1:B:44:SER:O	2.13	0.48
1:A:162:GLY:HA3	1:A:189:PHE:CZ	2.49	0.47
1:A:76:PHE:CE2	1:A:80:LEU:HD22	2.49	0.47
1:B:228:THR:O	1:B:232:ASN:ND2	2.44	0.47
1:B:234:ASN:HD21	1:B:238:ARG:HE	1.62	0.47
1:B:255:GLU:O	1:B:259:LEU:HG	2.15	0.47
1:A:258:PHE:CE2	1:A:262:LEU:HD11	2.49	0.47
1:B:140:ALA:HB3	1:B:166:PRO:HG3	1.97	0.47
1:A:24:SER:O	1:A:79:TYR:OH	2.28	0.46

Continued on next page...

Continued from previous page...

Atom-1	Atom-2	Interatomic distance (Å)	Clash overlap (Å)
1:A:66:ILE:HA	1:A:219:GLY:O	2.16	0.46
1:B:192:CYS:HB3	1:B:193:VAL:HG13	1.96	0.46
1:A:192:CYS:HA	1:A:193:VAL:HA	1.71	0.46
1:A:226:LEU:HD23	6:B:521:HOH:O	2.16	0.46
1:B:133:VAL:HG21	1:B:136:LYS:HB2	1.98	0.46
1:A:16:MET:O	1:A:269:GLN:HA	2.17	0.45
1:A:149:TYR:O	1:A:153:VAL:HG23	2.17	0.45
1:A:132:ASN:CG	1:A:133:VAL:H	2.20	0.45
1:A:124:LEU:HD23	1:A:161:PHE:HB2	1.99	0.45
1:B:132:ASN:HB2	1:B:133:VAL:HG22	1.99	0.45
1:B:192:CYS:HA	1:B:193:VAL:HA	1.76	0.45
1:A:162:GLY:HA3	1:A:189:PHE:CE1	2.52	0.45
1:B:114:ALA:N	1:B:115:PRO:HD2	2.33	0.44
1:B:212:LYS:HB3	1:B:213:PRO:HD3	1.99	0.43
1:A:78:PHE:CD2	1:A:78:PHE:C	2.90	0.43
1:B:61:PHE:HB3	1:B:62:PRO:CD	2.48	0.43
1:A:128:LEU:HD12	1:A:163:VAL:HB	2.01	0.43
1:B:212:LYS:N	1:B:213:PRO:CD	2.82	0.42
1:A:13:ASN:HB2	1:A:14:PRO:HD2	2.01	0.42
1:B:184:PHE:HA	1:B:185:PRO:HD2	1.87	0.42
1:B:20:GLY:HA3	4:B:412:FMN:C5A	2.49	0.42
1:B:71:LEU:N	1:B:72:PRO:CD	2.83	0.42
1:B:44:SER:HB3	1:B:99:SER:CB	2.50	0.42
1:A:20:GLY:HA3	4:A:413:FMN:N5	2.34	0.41
1:A:44:SER:HB3	1:A:99:SER:CB	2.50	0.41
1:A:71:LEU:N	1:A:72:PRO:CD	2.83	0.41
1:A:160:PRO:HB3	1:A:188:LYS:HG3	2.03	0.41
1:A:184:PHE:HA	1:A:185:PRO:HD2	1.98	0.41
1:B:168:TYR:HB2	1:B:174:PHE:CE1	2.57	0.40
1:A:129:SER:HB3	1:A:194:ASN:ND2	2.36	0.40
1:A:59:MET:HE3	6:A:582:HOH:O	2.21	0.40
1:A:114:ALA:N	1:A:115:PRO:HD2	2.36	0.40
1:B:132:ASN:HB2	1:B:133:VAL:CG1	2.46	0.40
1:B:173:HIS:CE1	3:B:411:GOL:O1	2.75	0.40

There are no symmetry-related clashes.

5.3 Torsion angles

5.3.1 Protein backbone

In the following table, the Percentiles column shows the percent Ramachandran outliers of the chain as a percentile score with respect to all X-ray entries followed by that with respect to entries of similar resolution.

The Analysed column shows the number of residues for which the backbone conformation was analysed, and the total number of residues.

Mol	Chain	Analysed	Favoured	Allowed	Outliers	Percentiles	
1	A	311/313 (99%)	297 (96%)	13 (4%)	1 (0%)	44	71
1	B	311/313 (99%)	294 (94%)	15 (5%)	2 (1%)	28	54
All	All	622/626 (99%)	591 (95%)	28 (4%)	3 (0%)	32	58

All (3) Ramachandran outliers are listed below:

Mol	Chain	Res	Type
1	B	133	VAL
1	B	23	CYS
1	A	23	CYS

5.3.2 Protein sidechains

In the following table, the Percentiles column shows the percent sidechain outliers of the chain as a percentile score with respect to all X-ray entries followed by that with respect to entries of similar resolution.

The Analysed column shows the number of residues for which the sidechain conformation was analysed, and the total number of residues.

Mol	Chain	Analysed	Rotameric	Outliers	Percentiles	
1	A	258/258 (100%)	246 (95%)	12 (5%)	30	57
1	B	258/258 (100%)	252 (98%)	6 (2%)	56	82
All	All	516/516 (100%)	498 (96%)	18 (4%)	41	69

All (18) residues with a non-rotameric sidechain are listed below:

Mol	Chain	Res	Type
1	A	5	ASN
1	A	6	LEU
1	A	8	ASP

Continued on next page...

Continued from previous page...

Mol	Chain	Res	Type
1	A	36	SER
1	A	46	THR
1	A	81	LYS
1	A	98	ILE
1	A	122	VAL
1	A	208	SER
1	A	303	GLU
1	A	307	ARG
1	A	312	GLU
1	B	5	ASN
1	B	67	ASN
1	B	73	ASN
1	B	129	SER
1	B	132	ASN
1	B	133	VAL

Some sidechains can be flipped to improve hydrogen bonding and reduce clashes. All (14) such sidechains are listed below:

Mol	Chain	Res	Type
1	A	5	ASN
1	A	9	HIS
1	A	87	HIS
1	A	215	GLN
1	A	234	ASN
1	A	275	GLN
1	B	9	HIS
1	B	87	HIS
1	B	132	ASN
1	B	152	GLN
1	B	173	HIS
1	B	215	GLN
1	B	234	ASN
1	B	275	GLN

5.3.3 RNA ⓘ

There are no RNA molecules in this entry.

5.4 Non-standard residues in protein, DNA, RNA chains [i](#)

There are no non-standard protein/DNA/RNA residues in this entry.

5.5 Carbohydrates [i](#)

There are no carbohydrates in this entry.

5.6 Ligand geometry [i](#)

26 ligands are modelled in this entry.

In the following table, the Counts columns list the number of bonds (or angles) for which Mogul statistics could be retrieved, the number of bonds (or angles) that are observed in the model and the number of bonds (or angles) that are defined in the Chemical Component Dictionary. The Link column lists molecule types, if any, to which the group is linked. The Z score for a bond length (or angle) is the number of standard deviations the observed value is removed from the expected value. A bond length (or angle) with $|Z| > 2$ is considered an outlier worth inspection. RMSZ is the root-mean-square of all Z scores of the bond lengths (or angles).

Mol	Type	Chain	Res	Link	Bond lengths			Bond angles		
					Counts	RMSZ	# $ Z > 2$	Counts	RMSZ	# $ Z > 2$
2	W6Y	A	401	-	20,28,28	2.17	4 (20%)	22,40,40	1.85	2 (9%)
3	GOL	A	402	-	5,5,5	0.30	0	5,5,5	0.38	0
3	GOL	A	403	-	5,5,5	0.29	0	5,5,5	0.25	0
3	GOL	A	404	-	5,5,5	0.30	0	5,5,5	0.33	0
3	GOL	A	405	-	5,5,5	0.44	0	5,5,5	0.52	0
3	GOL	A	406	-	5,5,5	0.36	0	5,5,5	0.34	0
3	GOL	A	407	-	5,5,5	0.19	0	5,5,5	0.40	0
3	GOL	A	408	-	5,5,5	0.42	0	5,5,5	0.49	0
3	GOL	A	409	-	5,5,5	0.43	0	5,5,5	0.43	0
3	GOL	A	410	-	5,5,5	0.30	0	5,5,5	0.15	0
3	GOL	A	411	-	5,5,5	0.47	0	5,5,5	0.56	0
3	GOL	A	412	-	5,5,5	0.37	0	5,5,5	0.23	0
4	FMN	A	413	-	31,33,33	1.49	7 (22%)	38,50,50	2.08	8 (21%)
5	NCO	A	414	-	6,6,6	0.80	0	0,15,15	0.00	-
2	W6Y	B	401	-	20,28,28	2.32	4 (20%)	22,40,40	1.79	3 (13%)
3	GOL	B	402	-	5,5,5	0.45	0	5,5,5	0.35	0
3	GOL	B	403	-	5,5,5	0.25	0	5,5,5	0.29	0
3	GOL	B	404	-	5,5,5	0.19	0	5,5,5	0.46	0
3	GOL	B	405	-	5,5,5	0.28	0	5,5,5	0.21	0
3	GOL	B	406	-	5,5,5	0.57	0	5,5,5	0.51	0
3	GOL	B	407	-	5,5,5	0.63	0	5,5,5	0.69	0
3	GOL	B	408	-	5,5,5	0.44	0	5,5,5	0.57	0

Mol	Type	Chain	Res	Link	Bond lengths			Bond angles		
					Counts	RMSZ	# Z > 2	Counts	RMSZ	# Z > 2
3	GOL	B	409	-	5,5,5	0.51	0	5,5,5	0.39	0
3	GOL	B	410	-	5,5,5	0.31	0	5,5,5	0.15	0
3	GOL	B	411	-	5,5,5	0.45	0	5,5,5	0.25	0
4	FMN	B	412	-	31,33,33	1.76	6 (19%)	38,50,50	2.82	8 (21%)

In the following table, the Chirals column lists the number of chiral outliers, the number of chiral centers analysed, the number of these observed in the model and the number defined in the Chemical Component Dictionary. Similar counts are reported in the Torsion and Rings columns. '-' means no outliers of that kind were identified.

Mol	Type	Chain	Res	Link	Chirals	Torsions	Rings
2	W6Y	A	401	-	-	0/5/13/13	0/3/3/3
3	GOL	A	402	-	-	0/4/4/4	0/0/0/0
3	GOL	A	403	-	-	0/4/4/4	0/0/0/0
3	GOL	A	404	-	-	0/4/4/4	0/0/0/0
3	GOL	A	405	-	-	0/4/4/4	0/0/0/0
3	GOL	A	406	-	-	0/4/4/4	0/0/0/0
3	GOL	A	407	-	-	0/4/4/4	0/0/0/0
3	GOL	A	408	-	-	0/4/4/4	0/0/0/0
3	GOL	A	409	-	-	0/4/4/4	0/0/0/0
3	GOL	A	410	-	-	0/4/4/4	0/0/0/0
3	GOL	A	411	-	-	0/4/4/4	0/0/0/0
3	GOL	A	412	-	-	0/4/4/4	0/0/0/0
4	FMN	A	413	-	-	0/16/18/18	0/3/3/3
5	NCO	A	414	-	-	0/0/0/0	0/0/0/0
2	W6Y	B	401	-	-	0/5/13/13	0/3/3/3
3	GOL	B	402	-	-	0/4/4/4	0/0/0/0
3	GOL	B	403	-	-	0/4/4/4	0/0/0/0
3	GOL	B	404	-	-	0/4/4/4	0/0/0/0
3	GOL	B	405	-	-	0/4/4/4	0/0/0/0
3	GOL	B	406	-	-	0/4/4/4	0/0/0/0
3	GOL	B	407	-	-	0/4/4/4	0/0/0/0
3	GOL	B	408	-	-	0/4/4/4	0/0/0/0
3	GOL	B	409	-	-	0/4/4/4	0/0/0/0
3	GOL	B	410	-	-	0/4/4/4	0/0/0/0
3	GOL	B	411	-	-	0/4/4/4	0/0/0/0
4	FMN	B	412	-	-	0/16/18/18	0/3/3/3

All (21) bond length outliers are listed below:

Mol	Chain	Res	Type	Atoms	Z	Observed(Å)	Ideal(Å)
2	B	401	W6Y	CAN-CAU	-6.29	1.40	1.52

Continued on next page...

Continued from previous page...

Mol	Chain	Res	Type	Atoms	Z	Observed(Å)	Ideal(Å)
2	A	401	W6Y	CAN-CAU	-5.32	1.42	1.52
2	B	401	W6Y	CAM-CAS	-5.05	1.36	1.51
2	A	401	W6Y	CAM-CAS	-4.63	1.38	1.51
4	A	413	FMN	C2-N3	-2.53	1.33	1.38
4	B	412	FMN	C2-N1	-2.37	1.33	1.38
4	A	413	FMN	C2-N1	-2.08	1.34	1.38
4	A	413	FMN	C9A-N10	2.49	1.42	1.38
4	B	412	FMN	C9A-N10	2.70	1.42	1.38
4	A	413	FMN	C8-C7	2.95	1.48	1.41
4	A	413	FMN	C4-C4A	3.18	1.47	1.41
4	B	412	FMN	C4-C4A	3.26	1.47	1.41
2	B	401	W6Y	CAX-NAP	3.27	1.39	1.33
4	A	413	FMN	C4A-C10	3.34	1.46	1.41
4	A	413	FMN	C9A-C5A	3.56	1.49	1.42
2	A	401	W6Y	CAV-NAO	3.66	1.40	1.34
4	B	412	FMN	C8-C7	3.77	1.50	1.41
4	B	412	FMN	C9A-C5A	3.95	1.50	1.42
2	B	401	W6Y	CAV-NAO	4.30	1.41	1.34
2	A	401	W6Y	CAX-NAP	4.32	1.40	1.33
4	B	412	FMN	C4A-C10	4.91	1.49	1.41

All (21) bond angle outliers are listed below:

Mol	Chain	Res	Type	Atoms	Z	Observed(°)	Ideal(°)
4	B	412	FMN	C4A-C4-N3	-6.09	114.81	123.48
4	B	412	FMN	C4-C4A-C10	-4.51	116.31	119.96
4	A	413	FMN	C4-C4A-C10	-3.85	116.85	119.96
4	A	413	FMN	C4A-C4-N3	-3.68	118.25	123.48
2	A	401	W6Y	CAQ-CAT-CAZ	-3.63	119.09	123.47
2	B	401	W6Y	CAU-CAV-NAO	-2.84	118.86	122.75
4	A	413	FMN	O3P-P-O5'	-2.34	100.51	106.73
2	B	401	W6Y	CAH-CAT-CAQ	-2.17	116.89	120.23
4	A	413	FMN	O3P-P-O2P	2.18	116.41	107.61
4	B	412	FMN	O2'-C2'-C3'	2.27	114.73	109.09
4	B	412	FMN	C4A-N5-C5A	2.45	119.34	116.76
4	B	412	FMN	O3P-P-O2P	2.52	117.79	107.61
4	B	412	FMN	C4-C4A-N5	2.61	121.54	118.68
4	A	413	FMN	C4-C4A-N5	2.75	121.69	118.68
4	A	413	FMN	C4A-N5-C5A	3.82	120.80	116.76
4	A	413	FMN	C1'-N10-C9A	4.71	122.66	118.35
2	B	401	W6Y	CAX-NAP-CAW	6.87	121.17	115.16
2	A	401	W6Y	CAX-NAP-CAW	7.04	121.31	115.16

Continued on next page...

Continued from previous page...

Mol	Chain	Res	Type	Atoms	Z	Observed(°)	Ideal(°)
4	B	412	FMN	C1'-N10-C9A	7.09	124.85	118.35
4	A	413	FMN	C4-N3-C2	8.13	122.27	115.16
4	B	412	FMN	C4-N3-C2	12.17	125.80	115.16

There are no chirality outliers.

There are no torsion outliers.

There are no ring outliers.

6 monomers are involved in 8 short contacts:

Mol	Chain	Res	Type	Clashes	Symm-Clashes
2	A	401	W6Y	1	0
3	A	411	GOL	1	0
4	A	413	FMN	2	0
2	B	401	W6Y	1	0
3	B	411	GOL	1	0
4	B	412	FMN	2	0

5.7 Other polymers [i](#)

There are no such residues in this entry.

5.8 Polymer linkage issues [i](#)

There are no chain breaks in this entry.

6 Fit of model and data ⓘ

6.1 Protein, DNA and RNA chains ⓘ

In the following table, the column labelled ‘#RSRZ> 2’ contains the number (and percentage) of RSRZ outliers, followed by percent RSRZ outliers for the chain as percentile scores relative to all X-ray entries and entries of similar resolution. The OWAB column contains the minimum, median, 95th percentile and maximum values of the occupancy-weighted average B-factor per residue. The column labelled ‘Q< 0.9’ lists the number of (and percentage) of residues with an average occupancy less than 0.9.

Mol	Chain	Analysed	<RSRZ>	#RSRZ>2	OWAB(Å ²)	Q<0.9
1	A	313/313 (100%)	-0.13	1 (0%) 93 94	11, 20, 38, 54	0
1	B	313/313 (100%)	-0.02	9 (2%) 52 51	10, 20, 39, 103	0
All	All	626/626 (100%)	-0.07	10 (1%) 72 72	10, 20, 39, 103	0

All (10) RSRZ outliers are listed below:

Mol	Chain	Res	Type	RSRZ
1	B	131	PRO	9.1
1	B	132	ASN	6.7
1	B	130	CYS	4.5
1	B	134	PRO	4.0
1	B	135	GLY	3.5
1	B	133	VAL	2.8
1	B	0	MET	2.7
1	B	129	SER	2.5
1	A	130	CYS	2.5
1	B	312	GLU	2.1

6.2 Non-standard residues in protein, DNA, RNA chains ⓘ

There are no non-standard protein/DNA/RNA residues in this entry.

6.3 Carbohydrates ⓘ

There are no carbohydrates in this entry.

6.4 Ligands ⓘ

In the following table, the Atoms column lists the number of modelled atoms in the group and the number defined in the chemical component dictionary. LLDF column lists the quality of electron density of the group with respect to its neighbouring residues in protein, DNA or RNA chains. The B-factors column lists the minimum, median, 95th percentile and maximum values of B factors of atoms in the group. The column labelled 'Q< 0.9' lists the number of atoms with occupancy less than 0.9.

Mol	Type	Chain	Res	Atoms	RSCC	RSR	LLDF	B-factors(Å ²)	Q<0.9
3	GOL	A	411	6/6	0.57	0.48	7.39	52,60,60,62	0
3	GOL	A	402	6/6	0.91	0.28	6.98	23,24,26,26	0
3	GOL	B	406	6/6	0.75	0.37	5.76	41,47,48,50	0
3	GOL	A	405	6/6	0.67	0.44	5.61	44,50,53,57	0
3	GOL	A	410	6/6	0.65	0.42	5.10	70,75,76,77	0
3	GOL	A	408	6/6	0.89	0.39	4.48	33,34,34,34	0
3	GOL	B	411	6/6	0.70	0.33	4.21	57,61,62,63	0
3	GOL	B	402	6/6	0.66	0.31	4.07	49,52,53,54	0
3	GOL	B	408	6/6	0.81	0.30	3.92	37,38,39,40	0
3	GOL	B	404	6/6	0.71	0.43	3.71	49,51,53,56	0
3	GOL	B	407	6/6	0.86	0.26	2.64	30,33,33,34	0
3	GOL	B	403	6/6	0.88	0.24	1.84	33,35,36,38	0
3	GOL	A	403	6/6	0.91	0.19	1.31	30,32,33,35	0
3	GOL	A	406	6/6	0.87	0.22	1.03	42,45,47,48	0
2	W6Y	A	401	26/26	0.89	0.19	0.44	32,40,57,63	0
2	W6Y	B	401	26/26	0.83	0.27	0.36	25,36,47,49	0
4	FMN	A	413	31/31	0.95	0.16	-0.10	13,17,19,19	0
4	FMN	B	412	31/31	0.94	0.16	-0.30	13,16,17,17	0
5	NCO	A	414	7/7	0.98	0.14	-0.48	10,10,10,11	0
3	GOL	B	410	6/6	0.79	0.36	-	54,58,60,61	0
3	GOL	A	404	6/6	0.84	0.24	-	40,44,45,48	0
3	GOL	A	407	6/6	0.94	0.11	-	28,29,30,31	0
3	GOL	A	409	6/6	0.87	0.20	-	36,38,38,40	0
3	GOL	A	412	6/6	0.77	0.50	-	66,68,70,71	0
3	GOL	B	405	6/6	0.74	0.36	-	64,66,67,68	0
3	GOL	B	409	6/6	0.79	0.28	-	37,40,43,44	0

6.5 Other polymers ⓘ

There are no such residues in this entry.