



Full wwPDB X-ray Structure Validation Report ⓘ

Nov 13, 2017 – 08:48 AM EST

PDB ID : 3W7E
Title : Structure of Trypanosoma cruzi dihydroorotate dehydrogenase in complex with MII-5-179
Authors : Inaoka, D.K.; Iida, M.; Tabuchi, T.; Lee, N.; Hashimoto, S.; Matsuoka, S.; Kuranaga, T.; Shiba, T.; Sakamoto, K.; Suzuki, S.; Balogun, E.O.; Nara, T.; Aoki, T.; Inoue, M.; Honma, T.; Tanaka, A.; Harada, S.; Kita, K.
Deposited on : unknown
Resolution : 1.56 Å(reported)

This is a Full wwPDB X-ray Structure Validation Report for a publicly released PDB entry.

We welcome your comments at validation@mail.wwpdb.org

A user guide is available at

<http://wwpdb.org/validation/2016/XrayValidationReportHelp>

with specific help available everywhere you see the ⓘ symbol.

The following versions of software and data (see [references ⓘ](#)) were used in the production of this report:

MolProbity : 4.02b-467
Mogul : 1.7.2 (RC1), CSD as538be (2017)
Xtriage (Phenix) : 1.9-1692
EDS : rb-20030345
Percentile statistics : 20161228.v01 (using entries in the PDB archive December 28th 2016)
Refmac : 5.8.0135
CCP4 : 6.5.0
Ideal geometry (proteins) : Engh & Huber (2001)
Ideal geometry (DNA, RNA) : Parkinson et al. (1996)
Validation Pipeline (wwPDB-VP) : rb-20030345

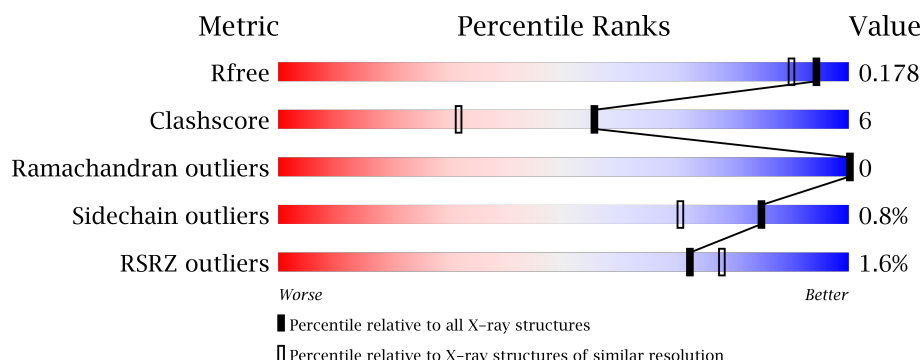
1 Overall quality at a glance

The following experimental techniques were used to determine the structure:

X-RAY DIFFRACTION



The reported resolution of this entry is 1.56 Å.

Percentile scores (ranging between 0-100) for global validation metrics of the entry are shown in the following graphic. The table shows the number of entries on which the scores are based.



Metric	Whole archive (#Entries)	Similar resolution (#Entries, resolution range(Å))
R_{free}	100719	1088 (1.56-1.56)
Clashscore	112137	1132 (1.56-1.56)
Ramachandran outliers	110173	1110 (1.56-1.56)
Sidechain outliers	110143	1108 (1.56-1.56)
RSRZ outliers	101464	1089 (1.56-1.56)

The table below summarises the geometric issues observed across the polymeric chains and their fit to the electron density. The red, orange, yellow and green segments on the lower bar indicate the fraction of residues that contain outliers for ≥ 3 , 2, 1 and 0 types of geometric quality criteria. A grey segment represents the fraction of residues that are not modelled. The numeric value for each fraction is indicated below the corresponding segment, with a dot representing fractions $\leq 5\%$. The upper red bar (where present) indicates the fraction of residues that have poor fit to the electron density. The numeric value is given above the bar.

Mol	Chain	Length	Quality of chain
1	A	313	 2% 87% 13%
1	B	313	 % 90% 9%

The following table lists non-polymeric compounds, carbohydrate monomers and non-standard residues in protein, DNA, RNA chains that are outliers for geometric or electron-density-fit criteria:

Mol	Type	Chain	Res	Chirality	Geometry	Clashes	Electron density
3	GOL	A	402	-	-	X	-
3	GOL	A	403	-	-	-	X
3	GOL	A	404[B]	-	-	-	X
3	GOL	A	407	-	-	-	X
3	GOL	A	409	-	-	-	X
3	GOL	A	411	-	-	-	X
3	GOL	B	403	-	-	-	X
3	GOL	B	405	-	-	-	X
3	GOL	B	406	-	-	-	X
3	GOL	B	407	-	-	-	X
3	GOL	B	409	-	-	X	X
5	NCO	A	414	-	-	-	X

2 Entry composition [i](#)

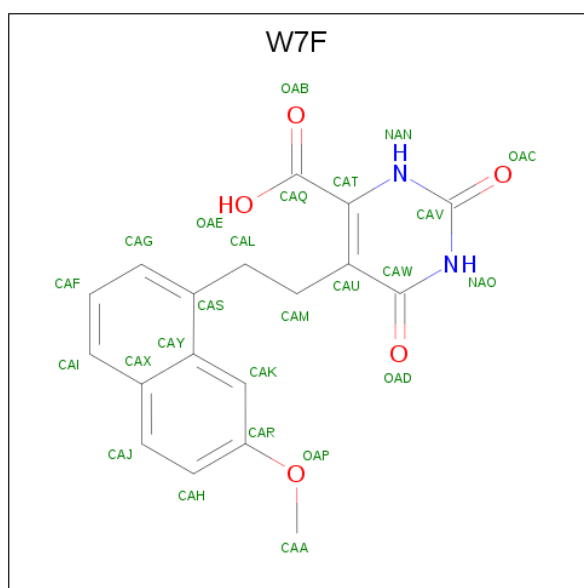
There are 6 unique types of molecules in this entry. The entry contains 5745 atoms, of which 0 are hydrogens and 0 are deuteriums.

In the tables below, the ZeroOcc column contains the number of atoms modelled with zero occupancy, the AltConf column contains the number of residues with at least one atom in alternate conformation and the Trace column contains the number of residues modelled with at most 2 atoms.

- Molecule 1 is a protein called Dihydroorotate dehydrogenase (fumarate).

Mol	Chain	Residues	Atoms					ZeroOcc	AltConf	Trace
1	A	313	Total	C	N	O	S	0	5	0
			2416	1548	401	449	18			
1	B	313	Total	C	N	O	S	0	2	0
			2401	1538	400	445	18			

- Molecule 2 is 5-[2-(7-methoxynaphthalen-1-yl)ethyl]-2,6-dioxo-1,2,3,6-tetrahydropyrimidine-4-carboxylic acid (three-letter code: W7F) (formula: C₁₈H₁₆N₂O₅).



Mol	Chain	Residues	Atoms				ZeroOcc	AltConf
2	A	1	Total	C	N	O	0	0
			25	18	2	5		
2	B	1	Total	C	N	O	0	0
			25	18	2	5		

- Molecule 3 is GLYCEROL (three-letter code: GOL) (formula: C₃H₈O₃).



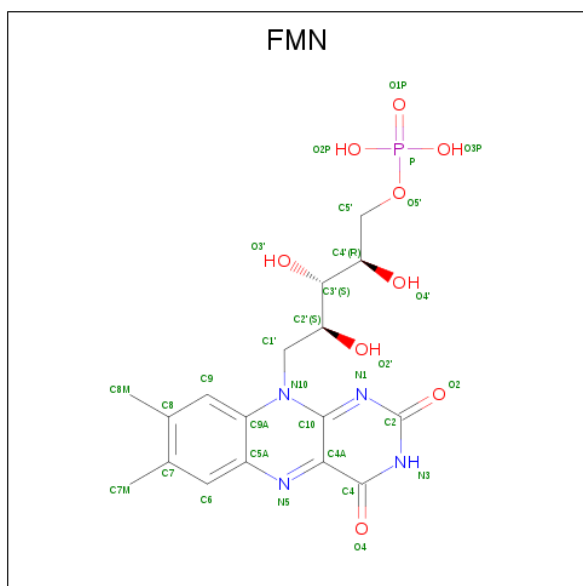
Mol	Chain	Residues	Atoms			ZeroOcc	AltConf
3	A	1	Total	C	O	0	0
			6	3	3		
3	A	1	Total	C	O	0	0
			6	3	3		
3	A	1	Total	C	O	0	1
			12	6	6		
3	A	1	Total	C	O	0	0
			6	3	3		
3	A	1	Total	C	O	0	0
			6	3	3		
3	A	1	Total	C	O	0	0
			6	3	3		
3	A	1	Total	C	O	0	0
			6	3	3		
3	A	1	Total	C	O	0	0
			6	3	3		
3	A	1	Total	C	O	0	0
			6	3	3		
3	B	1	Total	C	O	0	0
			6	3	3		
3	B	1	Total	C	O	0	0
			6	3	3		
3	B	1	Total	C	O	0	0
			6	3	3		

Continued on next page...

Continued from previous page...

Mol	Chain	Residues	Atoms			ZeroOcc	AltConf
3	B	1	Total	C	O	0	0
			6	3	3		
3	B	1	Total	C	O	0	0
			6	3	3		
3	B	1	Total	C	O	0	0
			6	3	3		
3	B	1	Total	C	O	0	0
			6	3	3		
3	B	1	Total	C	O	0	0
			6	3	3		
3	B	1	Total	C	O	0	0
			6	3	3		

- Molecule 4 is FLAVIN MONONUCLEOTIDE (three-letter code: FMN) (formula: $C_{17}H_{21}N_4O_9P$).



Mol	Chain	Residues	Atoms					ZeroOcc	AltConf
4	A	1	Total	C	N	O	P	0	0
			31	17	4	9	1		
4	B	1	Total	C	N	O	P	0	0
			31	17	4	9	1		

- Molecule 5 is COBALT HEXAMMINE(III) (three-letter code: NCO) (formula: $CoH_{18}N_6$).



Mol	Chain	Residues	Atoms			ZeroOcc	AltConf
5	A	1	Total	Co	N	0	0
			7	1	6		

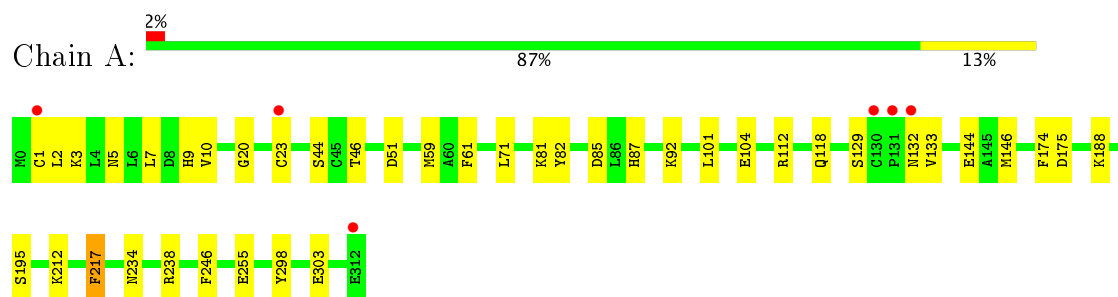
- Molecule 6 is water.

Mol	Chain	Residues	Atoms		ZeroOcc	AltConf
6	A	331	Total	O	0	0
			331	331		
6	B	346	Total	O	0	0
			346	346		

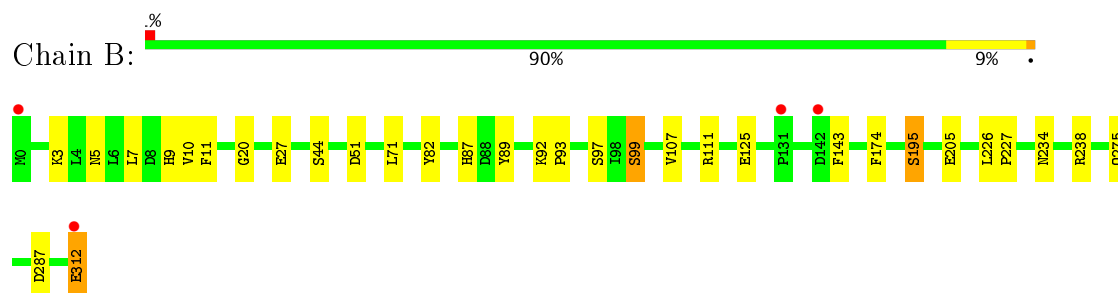
3 Residue-property plots [i](#)

These plots are drawn for all protein, RNA and DNA chains in the entry. The first graphic for a chain summarises the proportions of the various outlier classes displayed in the second graphic. The second graphic shows the sequence view annotated by issues in geometry and electron density. Residues are color-coded according to the number of geometric quality criteria for which they contain at least one outlier: green = 0, yellow = 1, orange = 2 and red = 3 or more. A red dot above a residue indicates a poor fit to the electron density ($RSRZ > 2$). Stretches of 2 or more consecutive residues without any outlier are shown as a green connector. Residues present in the sample, but not in the model, are shown in grey.

- Molecule 1: Dihydroorotate dehydrogenase (fumarate)



- Molecule 1: Dihydroorotate dehydrogenase (fumarate)



4 Data and refinement statistics

Property	Value	Source
Space group	P 21 21 21	Depositor
Cell constants a, b, c, α , β , γ	68.06Å 71.82Å 128.61Å 90.00° 90.00° 90.00°	Depositor
Resolution (Å)	49.45 – 1.56 49.40 – 1.56	Depositor EDS
% Data completeness (in resolution range)	99.1 (49.45-1.56) 99.1 (49.40-1.56)	Depositor EDS
R_{merge}	0.07	Depositor
R_{sym}	(Not available)	Depositor
$\langle I/\sigma(I) \rangle$ ¹	4.44 (at 1.56Å)	Xtriage
Refinement program	REFMAC 5.7.0032	Depositor
R, R_{free}	0.141 , 0.173 0.150 , 0.178	Depositor DCC
R_{free} test set	4460 reflections (5.27%)	DCC
Wilson B-factor (Å ²)	11.7	Xtriage
Anisotropy	0.052	Xtriage
Bulk solvent k_{sol} (e/Å ³), B_{sol} (Å ²)	0.38 , 49.1	EDS
L-test for twinning ²	$\langle L \rangle = 0.50$, $\langle L^2 \rangle = 0.33$	Xtriage
Estimated twinning fraction	No twinning to report.	Xtriage
F_o, F_c correlation	0.96	EDS
Total number of atoms	5745	wwPDB-VP
Average B, all atoms (Å ²)	14.0	wwPDB-VP

Xtriage's analysis on translational NCS is as follows: *The analyses of the Patterson function reveals a significant off-origin peak that is 24.48 % of the origin peak, indicating pseudo translational symmetry. The chance of finding a peak of this or larger height randomly in a structure without pseudo translational symmetry is equal to 3.8074e-03. The detected translational NCS is most likely also responsible for the elevated intensity ratio.*

¹ Intensities estimated from amplitudes.

² Theoretical values of $\langle |L| \rangle$, $\langle L^2 \rangle$ for acentric reflections are 0.5, 0.333 respectively for untwinned datasets, and 0.375, 0.2 for perfectly twinned datasets.

5 Model quality [i](#)

5.1 Standard geometry [i](#)

Bond lengths and bond angles in the following residue types are not validated in this section: FMN, GOL, W7F, NCO

The Z score for a bond length (or angle) is the number of standard deviations the observed value is removed from the expected value. A bond length (or angle) with $|Z| > 5$ is considered an outlier worth inspection. RMSZ is the root-mean-square of all Z scores of the bond lengths (or angles).

Mol	Chain	Bond lengths		Bond angles	
		RMSZ	$\# Z > 5$	RMSZ	$\# Z > 5$
1	A	1.15	5/2483 (0.2%)	1.08	7/3362 (0.2%)
1	B	1.11	3/2459 (0.1%)	1.05	4/3330 (0.1%)
All	All	1.13	8/4942 (0.2%)	1.07	11/6692 (0.2%)

All (8) bond length outliers are listed below:

Mol	Chain	Res	Type	Atoms	Z	Observed(Å)	Ideal(Å)
1	A	255	GLU	CD-OE1	-5.85	1.19	1.25
1	B	195	SER	CB-OG	-5.65	1.34	1.42
1	A	129	SER	CB-OG	5.61	1.49	1.42
1	B	20	GLY	C-O	-5.59	1.14	1.23
1	A	144	GLU	CD-OE2	5.50	1.31	1.25
1	B	27	GLU	CD-OE2	5.09	1.31	1.25
1	A	104[A]	GLU	CD-OE1	-5.02	1.20	1.25
1	A	104[B]	GLU	CD-OE1	-5.02	1.20	1.25

All (11) bond angle outliers are listed below:

Mol	Chain	Res	Type	Atoms	Z	Observed(°)	Ideal(°)
1	A	246	PHE	CB-CG-CD2	-5.96	116.62	120.80
1	A	146	MET	CG-SD-CE	-5.93	90.71	100.20
1	A	217	PHE	CB-CG-CD1	5.83	124.88	120.80
1	A	51	ASP	CB-CG-OD2	-5.83	113.06	118.30
1	A	112	ARG	NE-CZ-NH2	-5.79	117.40	120.30
1	A	174	PHE	CB-CG-CD2	-5.76	116.77	120.80
1	B	51	ASP	CB-CG-OD2	-5.66	113.20	118.30
1	B	174	PHE	CB-CG-CD2	-5.55	116.91	120.80
1	B	287	ASP	CB-CG-OD2	-5.15	113.67	118.30
1	B	3	LYS	CA-CB-CG	5.06	124.53	113.40
1	A	175	ASP	CB-CG-OD1	5.01	122.81	118.30

There are no chirality outliers.

There are no planarity outliers.

5.2 Too-close contacts ⓘ

In the following table, the Non-H and H(model) columns list the number of non-hydrogen atoms and hydrogen atoms in the chain respectively. The H(added) column lists the number of hydrogen atoms added and optimized by MolProbity. The Clashes column lists the number of clashes within the asymmetric unit, whereas Symm-Clashes lists symmetry related clashes.

Mol	Chain	Non-H	H(model)	H(added)	Clashes	Symm-Clashes
1	A	2416	0	2429	32	0
1	B	2401	0	2410	22	0
2	A	25	0	15	1	0
2	B	25	0	15	0	0
3	A	72	0	96	7	0
3	B	60	0	80	13	0
4	A	31	0	19	1	0
4	B	31	0	19	0	0
5	A	7	0	0	0	0
6	A	331	0	0	12	0
6	B	346	0	0	5	0
All	All	5745	0	5083	60	0

The all-atom clashscore is defined as the number of clashes found per 1000 atoms (including hydrogen atoms). The all-atom clashscore for this structure is 6.

All (60) close contacts within the same asymmetric unit are listed below, sorted by their clash magnitude.

Atom-1	Atom-2	Interatomic distance (Å)	Clash overlap (Å)
1:A:132:ASN:HB3	6:A:818:HOH:O	1.66	0.94
1:B:9:HIS:ND1	3:B:409:GOL:H11	1.84	0.93
1:B:9:HIS:CE1	3:B:409:GOL:H11	2.08	0.89
1:A:188:LYS:HE3	6:A:560:HOH:O	1.85	0.76
1:B:234:ASN:HD21	1:B:238:ARG:HE	1.32	0.75
1:A:132:ASN:ND2	6:A:818:HOH:O	2.22	0.72
1:A:195:SER:HB3	6:A:765:HOH:O	1.93	0.69
1:B:9:HIS:CE1	3:B:409:GOL:C1	2.77	0.68
3:A:406:GOL:H32	6:A:568:HOH:O	1.94	0.66
1:A:132:ASN:CB	6:A:818:HOH:O	2.35	0.64
1:A:298:TYR:HA	1:A:303:GLU:OE1	1.96	0.64
1:A:1:CYS:SG	6:A:727:HOH:O	2.54	0.64

Continued on next page...

Continued from previous page...

Atom-1	Atom-2	Interatomic distance (Å)	Clash overlap (Å)
3:B:409:GOL:H12	6:B:511:HOH:O	1.97	0.64
3:A:402:GOL:O2	3:B:408:GOL:H12	1.98	0.64
1:A:234:ASN:HD21	1:A:238:ARG:HE	1.47	0.63
1:A:3:LYS:HE3	1:A:10:VAL:CG1	2.29	0.62
1:B:195:SER:HB3	6:B:776:HOH:O	1.98	0.62
1:A:7:LEU:O	1:A:9:HIS:HD2	1.83	0.61
3:B:406:GOL:H11	6:B:635:HOH:O	1.99	0.61
1:B:7:LEU:O	1:B:9:HIS:HD2	1.83	0.60
1:A:59:MET:HE3	6:A:620:HOH:O	2.00	0.60
1:A:61:PHE:CE1	3:A:409:GOL:H32	2.37	0.59
1:A:238:ARG:HH11	3:A:402:GOL:H2	1.67	0.59
3:B:409:GOL:H31	6:B:764:HOH:O	2.03	0.58
1:B:5[A]:ASN:OD1	1:B:10:VAL:HG22	2.03	0.58
1:A:59:MET:CE	6:A:620:HOH:O	2.52	0.57
1:B:82:TYR:OH	1:B:87:HIS:HD2	1.88	0.56
1:A:101:LEU:HD12	6:A:824:HOH:O	2.04	0.56
1:A:82:TYR:OH	1:A:87:HIS:HD2	1.89	0.56
1:A:81:LYS:CD	1:A:85:ASP:OD2	2.55	0.54
1:A:87:HIS:HE1	1:A:92:LYS:O	1.93	0.52
3:A:402:GOL:HO2	3:B:408:GOL:H12	1.73	0.52
1:B:87:HIS:HE1	1:B:92:LYS:O	1.93	0.51
1:A:1:CYS:SG	1:A:2:LEU:N	2.84	0.51
1:A:238:ARG:NH1	3:A:402:GOL:H2	2.29	0.47
1:B:143:PHE:CE2	3:B:411:GOL:H31	2.48	0.47
1:B:234:ASN:ND2	1:B:238:ARG:HE	2.04	0.47
1:A:132:ASN:CG	6:A:818:HOH:O	2.47	0.46
1:B:44:SER:HB2	1:B:71:LEU:HD11	1.97	0.46
1:B:11:PHE:CE2	1:B:93:PRO:HG2	2.51	0.46
1:A:20:GLY:N	1:A:23:CYS:SG	2.88	0.46
1:A:217:PHE:CE1	3:B:402:GOL:H12	2.51	0.45
1:A:132:ASN:ND2	6:A:816:HOH:O	2.48	0.45
3:A:402:GOL:O2	3:B:408:GOL:C1	2.65	0.45
1:B:205:GLU:C	1:B:205:GLU:CD	2.76	0.44
1:A:3:LYS:HE3	1:A:10:VAL:HG13	1.97	0.44
1:A:212:LYS:HE3	1:B:312:GLU:HB2	1.98	0.44
1:B:97:SER:HA	1:B:125:GLU:O	2.18	0.43
1:B:44:SER:HB3	1:B:99:SER:HB2	2.00	0.43
1:A:20:GLY:HA3	4:A:413:FMN:N5	2.33	0.43
1:B:89:TYR:HB3	3:B:409:GOL:H2	2.00	0.43
1:A:44:SER:HB2	1:A:71:LEU:HD11	2.01	0.41
1:B:9:HIS:ND1	3:B:409:GOL:C1	2.67	0.41

Continued on next page...

Continued from previous page...

Atom-1	Atom-2	Interatomic distance (Å)	Clash overlap (Å)
1:A:101:LEU:HD21	2:A:401:W7F:H14	2.03	0.41
1:A:46:THR:HG23	1:A:71:LEU:CD2	2.51	0.41
1:B:107:VAL:O	1:B:111:ARG:HG3	2.21	0.41
1:B:275:GLN:NE2	6:B:605:HOH:O	2.52	0.40
1:B:226:LEU:HB3	1:B:227:PRO:HD3	2.03	0.40
1:A:234:ASN:ND2	1:A:238:ARG:HE	2.14	0.40
1:A:132:ASN:HB3	1:A:133:VAL:H	1.62	0.40

There are no symmetry-related clashes.

5.3 Torsion angles [i](#)

5.3.1 Protein backbone [i](#)

In the following table, the Percentiles column shows the percent Ramachandran outliers of the chain as a percentile score with respect to all X-ray entries followed by that with respect to entries of similar resolution.

The Analysed column shows the number of residues for which the backbone conformation was analysed, and the total number of residues.

Mol	Chain	Analysed	Favoured	Allowed	Outliers	Percentiles	
1	A	316/313 (101%)	309 (98%)	7 (2%)	0	100	100
1	B	313/313 (100%)	308 (98%)	5 (2%)	0	100	100
All	All	629/626 (100%)	617 (98%)	12 (2%)	0	100	100

There are no Ramachandran outliers to report.

5.3.2 Protein sidechains [i](#)

In the following table, the Percentiles column shows the percent sidechain outliers of the chain as a percentile score with respect to all X-ray entries followed by that with respect to entries of similar resolution.

The Analysed column shows the number of residues for which the sidechain conformation was analysed, and the total number of residues.

Mol	Chain	Analysed	Rotameric	Outliers	Percentiles	
1	A	263/258 (102%)	260 (99%)	3 (1%)	78	57

Continued on next page...

Continued from previous page...

Mol	Chain	Analysed	Rotameric	Outliers	Percentiles	
1	B	260/258 (101%)	258 (99%)	2 (1%)	85	70
All	All	523/516 (101%)	518 (99%)	5 (1%)	85	61

All (5) residues with a non-rotameric sidechain are listed below:

Mol	Chain	Res	Type
1	A	5[A]	ASN
1	A	5[B]	ASN
1	A	118	GLN
1	B	99	SER
1	B	312	GLU

Some sidechains can be flipped to improve hydrogen bonding and reduce clashes. All (9) such sidechains are listed below:

Mol	Chain	Res	Type
1	A	9	HIS
1	A	87	HIS
1	A	132	ASN
1	A	234	ASN
1	B	9	HIS
1	B	87	HIS
1	B	152	GLN
1	B	234	ASN
1	B	275	GLN

5.3.3 RNA ⓘ

There are no RNA molecules in this entry.

5.4 Non-standard residues in protein, DNA, RNA chains ⓘ

There are no non-standard protein/DNA/RNA residues in this entry.

5.5 Carbohydrates ⓘ

There are no carbohydrates in this entry.

5.6 Ligand geometry

27 ligands are modelled in this entry.

In the following table, the Counts columns list the number of bonds (or angles) for which Mogul statistics could be retrieved, the number of bonds (or angles) that are observed in the model and the number of bonds (or angles) that are defined in the Chemical Component Dictionary. The Link column lists molecule types, if any, to which the group is linked. The Z score for a bond length (or angle) is the number of standard deviations the observed value is removed from the expected value. A bond length (or angle) with $|Z| > 2$ is considered an outlier worth inspection. RMSZ is the root-mean-square of all Z scores of the bond lengths (or angles).

Mol	Type	Chain	Res	Link	Bond lengths			Bond angles		
					Counts	RMSZ	# Z > 2	Counts	RMSZ	# Z > 2
2	W7F	A	401	-	22,27,27	2.54	7 (31%)	23,38,38	3.12	9 (39%)
3	GOL	A	402	-	5,5,5	0.68	0	5,5,5	0.91	0
3	GOL	A	403	-	5,5,5	0.74	0	5,5,5	0.93	0
3	GOL	A	404[A]	-	5,5,5	0.66	0	5,5,5	0.31	0
3	GOL	A	404[B]	-	5,5,5	0.54	0	5,5,5	0.51	0
3	GOL	A	405	-	5,5,5	0.36	0	5,5,5	0.80	0
3	GOL	A	406	-	5,5,5	0.30	0	5,5,5	0.53	0
3	GOL	A	407	-	5,5,5	1.10	0	5,5,5	1.01	0
3	GOL	A	408	-	5,5,5	0.70	0	5,5,5	0.73	0
3	GOL	A	409	-	5,5,5	1.17	0	5,5,5	1.45	2 (40%)
3	GOL	A	410	-	5,5,5	0.67	0	5,5,5	0.88	0
3	GOL	A	411	-	5,5,5	0.74	0	5,5,5	0.85	0
3	GOL	A	412	-	5,5,5	0.38	0	5,5,5	0.45	0
4	FMN	A	413	-	31,33,33	1.41	5 (16%)	38,50,50	2.44	9 (23%)
5	NCO	A	414	-	6,6,6	2.51	4 (66%)	0,15,15	0.00	-
2	W7F	B	401	-	22,27,27	1.93	3 (13%)	23,38,38	2.43	12 (52%)
3	GOL	B	402	-	5,5,5	1.21	0	5,5,5	0.90	0
3	GOL	B	403	-	5,5,5	0.63	0	5,5,5	0.90	0
3	GOL	B	404	-	5,5,5	0.49	0	5,5,5	0.84	0
3	GOL	B	405	-	5,5,5	0.72	0	5,5,5	0.92	0
3	GOL	B	406	-	5,5,5	0.45	0	5,5,5	0.60	0
3	GOL	B	407	-	5,5,5	0.78	0	5,5,5	1.18	1 (20%)
3	GOL	B	408	-	5,5,5	0.54	0	5,5,5	0.65	0
3	GOL	B	409	-	5,5,5	0.61	0	5,5,5	0.63	0
3	GOL	B	410	-	5,5,5	0.44	0	5,5,5	0.35	0
3	GOL	B	411	-	5,5,5	0.87	0	5,5,5	1.01	0
4	FMN	B	412	-	31,33,33	1.59	5 (16%)	38,50,50	2.81	6 (15%)

In the following table, the Chirals column lists the number of chiral outliers, the number of chiral centers analysed, the number of these observed in the model and the number defined in the

Chemical Component Dictionary. Similar counts are reported in the Torsion and Rings columns.
'-' means no outliers of that kind were identified.

Mol	Type	Chain	Res	Link	Chirals	Torsions	Rings
2	W7F	A	401	-	-	0/7/11/11	0/3/3/3
3	GOL	A	402	-	-	0/4/4/4	0/0/0/0
3	GOL	A	403	-	-	0/4/4/4	0/0/0/0
3	GOL	A	404[A]	-	-	0/4/4/4	0/0/0/0
3	GOL	A	404[B]	-	-	0/4/4/4	0/0/0/0
3	GOL	A	405	-	-	0/4/4/4	0/0/0/0
3	GOL	A	406	-	-	0/4/4/4	0/0/0/0
3	GOL	A	407	-	-	0/4/4/4	0/0/0/0
3	GOL	A	408	-	-	0/4/4/4	0/0/0/0
3	GOL	A	409	-	-	0/4/4/4	0/0/0/0
3	GOL	A	410	-	-	0/4/4/4	0/0/0/0
3	GOL	A	411	-	-	0/4/4/4	0/0/0/0
3	GOL	A	412	-	-	0/4/4/4	0/0/0/0
4	FMN	A	413	-	-	0/16/18/18	0/3/3/3
5	NCO	A	414	-	-	0/0/0/0	0/0/0/0
2	W7F	B	401	-	-	0/7/11/11	0/3/3/3
3	GOL	B	402	-	-	0/4/4/4	0/0/0/0
3	GOL	B	403	-	-	0/4/4/4	0/0/0/0
3	GOL	B	404	-	-	0/4/4/4	0/0/0/0
3	GOL	B	405	-	-	0/4/4/4	0/0/0/0
3	GOL	B	406	-	-	0/4/4/4	0/0/0/0
3	GOL	B	407	-	-	0/4/4/4	0/0/0/0
3	GOL	B	408	-	-	0/4/4/4	0/0/0/0
3	GOL	B	409	-	-	0/4/4/4	0/0/0/0
3	GOL	B	410	-	-	0/4/4/4	0/0/0/0
3	GOL	B	411	-	-	0/4/4/4	0/0/0/0
4	FMN	B	412	-	-	0/16/18/18	0/3/3/3

All (24) bond length outliers are listed below:

Mol	Chain	Res	Type	Atoms	Z	Observed(Å)	Ideal(Å)
2	A	401	W7F	CAM-CAU	-4.90	1.43	1.52
2	A	401	W7F	CAT-CAU	-4.53	1.33	1.41
4	B	412	FMN	C1'-N10	-3.84	1.44	1.48
4	A	413	FMN	C1'-N10	-2.76	1.45	1.48
2	A	401	W7F	CAK-CAY	-2.11	1.38	1.42
4	B	412	FMN	C2-N3	-2.08	1.34	1.38
4	A	413	FMN	C7M-C7	2.10	1.55	1.51
4	B	412	FMN	C4A-N5	2.10	1.36	1.33
5	A	414	NCO	CO-N4	2.27	2.06	1.97
4	A	413	FMN	C9A-C5A	2.32	1.47	1.42

Continued on next page...

Continued from previous page...

Mol	Chain	Res	Type	Atoms	Z	Observed(Å)	Ideal(Å)
4	A	413	FMN	C4-C4A	2.33	1.45	1.41
2	B	401	W7F	CAV-NAN	2.37	1.42	1.38
2	A	401	W7F	CAG-CAS	2.43	1.41	1.37
5	A	414	NCO	CO-N1	2.72	2.07	1.97
2	A	401	W7F	CAF-CAG	3.07	1.44	1.38
5	A	414	NCO	CO-N2	3.11	2.09	1.97
4	B	412	FMN	C4A-C10	3.25	1.46	1.41
4	A	413	FMN	C4A-C10	3.53	1.47	1.41
5	A	414	NCO	CO-N6	3.64	2.11	1.97
4	B	412	FMN	C4-C4A	3.88	1.48	1.41
2	B	401	W7F	CAW-NAO	4.03	1.40	1.33
2	A	401	W7F	CAW-NAO	5.22	1.42	1.33
2	A	401	W7F	CAT-NAN	5.65	1.43	1.34
2	B	401	W7F	CAT-NAN	6.21	1.44	1.34

All (39) bond angle outliers are listed below:

Mol	Chain	Res	Type	Atoms	Z	Observed(°)	Ideal(°)
4	B	412	FMN	C4-C4A-C10	-8.32	113.23	119.96
4	A	413	FMN	C4A-C10-N10	-4.89	117.12	120.52
4	A	413	FMN	C4-C4A-C10	-4.74	116.13	119.96
4	A	413	FMN	C4A-C4-N3	-4.70	116.79	123.48
2	A	401	W7F	CAI-CAF-CAG	-4.35	113.87	120.97
2	A	401	W7F	CAM-CAL-CAS	-4.11	105.40	112.43
4	B	412	FMN	C4A-C10-N10	-3.88	117.83	120.52
2	A	401	W7F	CAH-CAR-CAK	-3.83	115.64	120.82
2	B	401	W7F	CAJ-CAX-CAI	-3.58	114.72	123.18
2	B	401	W7F	CAU-CAT-NAN	-3.48	117.99	122.75
4	B	412	FMN	C4A-C4-N3	-3.45	118.57	123.48
2	B	401	W7F	CAM-CAL-CAS	-3.06	107.19	112.43
2	B	401	W7F	CAH-CAJ-CAX	-2.97	116.22	120.83
2	B	401	W7F	OAP-CAR-CAK	-2.69	117.43	124.49
2	B	401	W7F	CAI-CAF-CAG	-2.07	117.60	120.97
2	B	401	W7F	CAS-CAY-CAX	-2.04	116.28	118.95
3	A	409	GOL	O3-C3-C2	2.02	120.25	110.07
4	A	413	FMN	C1'-N10-C9A	2.06	120.23	118.35
2	B	401	W7F	CAA-OAP-CAR	2.09	122.07	117.50
2	B	401	W7F	CAJ-CAH-CAR	2.14	123.01	120.15
3	B	407	GOL	O2-C2-C3	2.22	119.32	108.84
4	A	413	FMN	P-O5'-C5'	2.22	124.42	118.30
2	A	401	W7F	CAF-CAG-CAS	2.27	125.69	121.52
4	A	413	FMN	O5'-C5'-C4'	2.28	115.45	109.36

Continued on next page...

Continued from previous page...

Mol	Chain	Res	Type	Atoms	Z	Observed(°)	Ideal(°)
3	A	409	GOL	C3-C2-C1	2.32	120.75	111.52
2	B	401	W7F	CAJ-CAX-CAY	2.37	122.19	119.11
2	A	401	W7F	CAI-CAX-CAY	2.47	122.32	119.11
2	B	401	W7F	CAI-CAX-CAY	2.67	122.58	119.11
4	A	413	FMN	C4-C4A-N5	2.67	121.61	118.68
4	B	412	FMN	C1'-N10-C9A	3.04	121.13	118.35
2	A	401	W7F	CAK-CAY-CAX	3.68	122.85	118.83
4	A	413	FMN	C4A-N5-C5A	4.13	121.12	116.76
2	A	401	W7F	CAA-OAP-CAR	4.59	127.55	117.50
2	A	401	W7F	CAJ-CAH-CAR	5.03	126.90	120.15
4	B	412	FMN	C4-C4A-N5	5.57	124.78	118.68
2	B	401	W7F	CAW-NAO-CAV	6.84	121.14	115.16
2	A	401	W7F	CAW-NAO-CAV	9.23	123.24	115.16
4	A	413	FMN	C4-N3-C2	9.75	123.69	115.16
4	B	412	FMN	C4-N3-C2	11.70	125.39	115.16

There are no chirality outliers.

There are no torsion outliers.

There are no ring outliers.

10 monomers are involved in 19 short contacts:

Mol	Chain	Res	Type	Clashes	Symm-Clashes
2	A	401	W7F	1	0
3	A	402	GOL	5	0
3	A	406	GOL	1	0
3	A	409	GOL	1	0
4	A	413	FMN	1	0
3	B	402	GOL	1	0
3	B	406	GOL	1	0
3	B	408	GOL	3	0
3	B	409	GOL	7	0
3	B	411	GOL	1	0

5.7 Other polymers [i](#)

There are no such residues in this entry.

5.8 Polymer linkage issues [i](#)

There are no chain breaks in this entry.

6 Fit of model and data ⓘ

6.1 Protein, DNA and RNA chains ⓘ

In the following table, the column labelled ‘#RSRZ> 2’ contains the number (and percentage) of RSRZ outliers, followed by percent RSRZ outliers for the chain as percentile scores relative to all X-ray entries and entries of similar resolution. The OWAB column contains the minimum, median, 95th percentile and maximum values of the occupancy-weighted average B-factor per residue. The column labelled ‘Q< 0.9’ lists the number of (and percentage) of residues with an average occupancy less than 0.9.

Mol	Chain	Analysed	<RSRZ>	#RSRZ>2	OWAB(Å ²)	Q<0.9
1	A	313/313 (100%)	-0.34	6 (1%) 67 73	6, 11, 22, 47	0
1	B	313/313 (100%)	-0.33	4 (1%) 77 82	7, 11, 22, 44	0
All	All	626/626 (100%)	-0.34	10 (1%) 72 78	6, 11, 22, 47	0

All (10) RSRZ outliers are listed below:

Mol	Chain	Res	Type	RSRZ
1	A	1	CYS	5.8
1	A	23	CYS	5.3
1	A	312	GLU	3.7
1	B	312	GLU	3.0
1	A	132	ASN	2.9
1	A	130	CYS	2.7
1	B	142	ASP	2.4
1	A	131	PRO	2.3
1	B	131	PRO	2.3
1	B	0	MET	2.0

6.2 Non-standard residues in protein, DNA, RNA chains ⓘ

There are no non-standard protein/DNA/RNA residues in this entry.

6.3 Carbohydrates ⓘ

There are no carbohydrates in this entry.

6.4 Ligands

In the following table, the Atoms column lists the number of modelled atoms in the group and the number defined in the chemical component dictionary. LLDF column lists the quality of electron density of the group with respect to its neighbouring residues in protein, DNA or RNA chains. The B-factors column lists the minimum, median, 95th percentile and maximum values of B factors of atoms in the group. The column labelled 'Q< 0.9' lists the number of atoms with occupancy less than 0.9.

Mol	Type	Chain	Res	Atoms	RSCC	RSR	LLDF	B-factors(Å ²)	Q<0.9
3	GOL	B	406	6/6	0.66	0.25	24.82	34,42,48,51	0
3	GOL	B	409	6/6	0.88	0.33	16.68	20,33,37,38	0
3	GOL	A	411	6/6	0.59	0.33	6.44	33,52,58,59	0
3	GOL	A	409	6/6	0.90	0.15	6.22	26,31,32,34	0
3	GOL	B	405	6/6	0.84	0.16	5.97	23,32,33,35	0
3	GOL	A	403	6/6	0.68	0.27	5.29	34,46,51,53	0
3	GOL	B	407	6/6	0.76	0.18	4.71	26,32,39,43	0
3	GOL	A	407	6/6	0.88	0.19	3.85	17,24,33,37	0
3	GOL	B	403	6/6	0.92	0.17	3.62	18,19,27,28	0
5	NCO	A	414	7/7	0.99	0.10	3.30	9,10,10,10	0
3	GOL	A	404[B]	6/6	0.97	0.07	2.91	12,12,13,13	6
3	GOL	A	408	6/6	0.83	0.18	1.90	23,28,30,32	0
3	GOL	B	411	6/6	0.90	0.16	1.16	26,31,34,38	0
3	GOL	A	404[A]	6/6	0.97	0.07	0.85	10,11,12,13	6
3	GOL	A	405	6/6	0.96	0.08	0.56	17,18,19,23	0
2	W7F	A	401	25/25	0.93	0.10	0.33	8,13,18,22	0
2	W7F	B	401	25/25	0.95	0.08	-0.04	8,12,16,17	0
4	FMN	A	413	31/31	0.98	0.07	-0.07	5,7,9,10	0
3	GOL	B	402	6/6	0.91	0.07	-0.25	21,23,25,29	0
4	FMN	B	412	31/31	0.98	0.06	-0.57	5,7,9,9	0
3	GOL	B	404	6/6	0.81	0.23	-	31,40,45,56	0
3	GOL	A	410	6/6	0.75	0.16	-	39,42,44,46	0
3	GOL	A	412	6/6	0.71	0.20	-	35,50,64,66	0
3	GOL	B	408	6/6	0.84	0.17	-	25,35,36,42	0
3	GOL	A	402	6/6	0.62	0.37	-	36,48,55,59	0
3	GOL	A	406	6/6	0.84	0.12	-	32,40,46,47	0
3	GOL	B	410	6/6	0.78	0.17	-	33,39,42,43	0

6.5 Other polymers

There are no such residues in this entry.