



Full wwPDB X-ray Structure Validation Report ⓘ

Feb 14, 2017 – 09:32 am GMT

PDB ID : 3W8X
Title : The complex structure of EncM with trifluorotriketide
Authors : Teufel, R.; Miyanaga, A.; Stull, F.; Michaudel, Q.; Louie, G.; Noel, J.P.;
Baran, P.S.; Palfey, B.; Moore, B.S.
Deposited on : 2013-03-22
Resolution : 1.82 Å(reported)

This is a Full wwPDB X-ray Structure Validation Report for a publicly released PDB entry.

We welcome your comments at validation@mail.wwpdb.org

A user guide is available at

<http://wwpdb.org/validation/2016/XrayValidationReportHelp>

with specific help available everywhere you see the ⓘ symbol.

The following versions of software and data (see [references ⓘ](#)) were used in the production of this report:

MolProbity : 4.02b-467
Mogul : 1.7.2 (RC1), CSD as538be (2017)
Xtriage (Phenix) : 1.9-1692
EDS : trunk28620
Percentile statistics : 20161228.v01 (using entries in the PDB archive December 28th 2016)
Refmac : 5.8.0135
CCP4 : 6.5.0
Ideal geometry (proteins) : Engh & Huber (2001)
Ideal geometry (DNA, RNA) : Parkinson et al. (1996)
Validation Pipeline (wwPDB-VP) : recalc28949

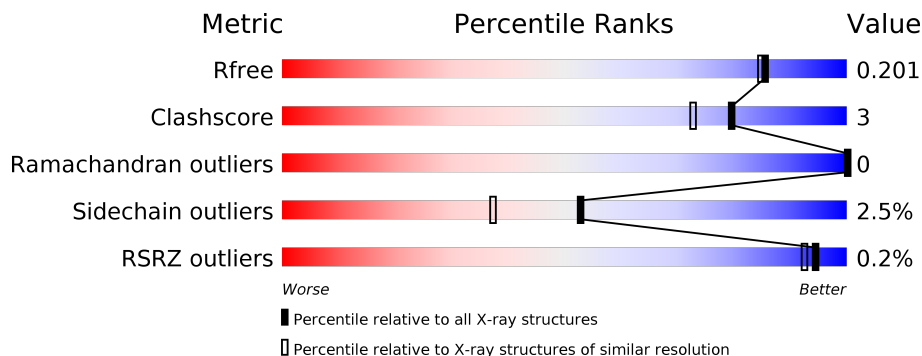
1 Overall quality at a glance

The following experimental techniques were used to determine the structure:

X-RAY DIFFRACTION



The reported resolution of this entry is 1.82 Å.

Percentile scores (ranging between 0-100) for global validation metrics of the entry are shown in the following graphic. The table shows the number of entries on which the scores are based.



Metric	Whole archive (#Entries)	Similar resolution (#Entries, resolution range(Å))
R_{free}	100719	5868 (1.84-1.80)
Clashscore	112137	6856 (1.84-1.80)
Ramachandran outliers	110173	6780 (1.84-1.80)
Sidechain outliers	110143	6780 (1.84-1.80)
RSRZ outliers	101464	5947 (1.84-1.80)

The table below summarises the geometric issues observed across the polymeric chains and their fit to the electron density. The red, orange, yellow and green segments on the lower bar indicate the fraction of residues that contain outliers for ≥ 3 , 2, 1 and 0 types of geometric quality criteria. A grey segment represents the fraction of residues that are not modelled. The numeric value for each fraction is indicated below the corresponding segment, with a dot representing fractions $\leq 5\%$. The upper red bar (where present) indicates the fraction of residues that have poor fit to the electron density. The numeric value is given above the bar.

Mol	Chain	Length	Quality of chain
1	A	468	 89% 8% ..
1	B	468	 89% 9% ..

The following table lists non-polymeric compounds, carbohydrate monomers and non-standard residues in protein, DNA, RNA chains that are outliers for geometric or electron-density-fit criteria:

Mol	Type	Chain	Res	Chirality	Geometry	Clashes	Electron density
3	FTK	A	601	-	-	-	X
3	FTK	B	601	-	-	-	X
4	GOL	B	602	-	-	-	X

2 Entry composition

There are 5 unique types of molecules in this entry. The entry contains 7813 atoms, of which 0 are hydrogens and 0 are deuteriums.

In the tables below, the ZeroOcc column contains the number of atoms modelled with zero occupancy, the AltConf column contains the number of residues with at least one atom in alternate conformation and the Trace column contains the number of residues modelled with at most 2 atoms.

- Molecule 1 is a protein called Putative FAD-dependent oxygenase EncM.

Mol	Chain	Residues	Atoms					ZeroOcc	AltConf	Trace
1	A	461	Total	C	N	O	S	0	0	0
			3507	2216	626	652	13			
1	B	461	Total	C	N	O	S	0	0	0
			3507	2216	626	652	13			

There are 8 discrepancies between the modelled and reference sequences:

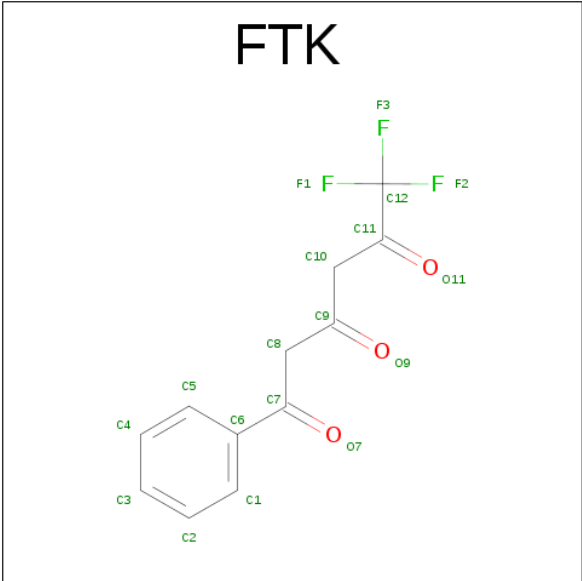
Chain	Residue	Modelled	Actual	Comment	Reference
A	-3	GLY	-	EXPRESSION TAG	UNP Q9KHK2
A	-2	SER	-	EXPRESSION TAG	UNP Q9KHK2
A	-1	HIS	-	EXPRESSION TAG	UNP Q9KHK2
A	0	GLY	-	EXPRESSION TAG	UNP Q9KHK2
B	-3	GLY	-	EXPRESSION TAG	UNP Q9KHK2
B	-2	SER	-	EXPRESSION TAG	UNP Q9KHK2
B	-1	HIS	-	EXPRESSION TAG	UNP Q9KHK2
B	0	GLY	-	EXPRESSION TAG	UNP Q9KHK2

- Molecule 2 is FLAVIN-ADENINE DINUCLEOTIDE (three-letter code: FAD) (formula: $C_{27}H_{33}N_9O_{15}P_2$).



Mol	Chain	Residues	Atoms					ZeroOcc	AltConf
2	A	1	Total 53	C 27	N 9	O 15	P 2	0	0
2	B	1	Total 53	C 27	N 9	O 15	P 2	0	0

- Molecule 3 is 6,6,6-TRIFLUORO-1-PHENYLHEXANE-1,3,5-TRIONE (three-letter code: FTK) (formula: C₁₂H₉F₃O₃).



Mol	Chain	Residues	Atoms				ZeroOcc	AltConf
3	A	1	Total	C	F	O	0	0
			18	12	3	3		

Continued on next page...

Continued from previous page...

Mol	Chain	Residues	Atoms				ZeroOcc	AltConf
3	B	1	Total	C	F	O	0	0
			18	12	3	3		

- Molecule 4 is GLYCEROL (three-letter code: GOL) (formula: $C_3H_8O_3$).



Mol	Chain	Residues	Atoms			ZeroOcc	AltConf
4	B	1	Total	C	O	0	0
			6	3	3		

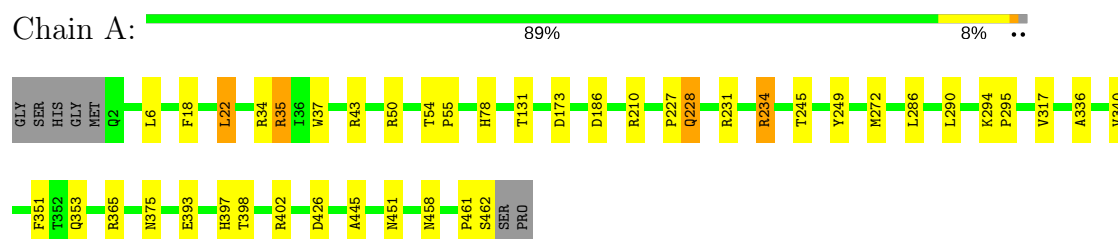
- Molecule 5 is water.

Mol	Chain	Residues	Atoms		ZeroOcc	AltConf
5	A	323	Total	O	0	0
			323	323		
5	B	328	Total	O	0	0
			328	328		

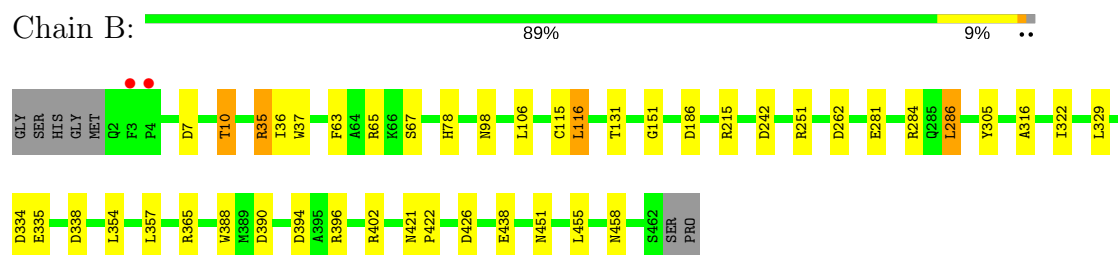
3 Residue-property plots [i](#)

These plots are drawn for all protein, RNA and DNA chains in the entry. The first graphic for a chain summarises the proportions of the various outlier classes displayed in the second graphic. The second graphic shows the sequence view annotated by issues in geometry and electron density. Residues are color-coded according to the number of geometric quality criteria for which they contain at least one outlier: green = 0, yellow = 1, orange = 2 and red = 3 or more. A red dot above a residue indicates a poor fit to the electron density ($RSRZ > 2$). Stretches of 2 or more consecutive residues without any outlier are shown as a green connector. Residues present in the sample, but not in the model, are shown in grey.

• Molecule 1: Putative FAD-dependent oxygenase EncM



• Molecule 1: Putative FAD-dependent oxygenase EncM



4 Data and refinement statistics

Property	Value	Source
Space group	P 1 21 1	Depositor
Cell constants a, b, c, α , β , γ	71.25Å 85.17Å 79.36Å 90.00° 99.47° 90.00°	Depositor
Resolution (Å)	48.52 – 1.82 48.48 – 1.82	Depositor EDS
% Data completeness (in resolution range)	99.5 (48.52-1.82) 99.6 (48.48-1.82)	Depositor EDS
R_{merge}	(Not available)	Depositor
R_{sym}	(Not available)	Depositor
$\langle I/\sigma(I) \rangle$ ¹	2.90 (at 1.82Å)	Xtriage
Refinement program	REFMAC 5.7.0029	Depositor
R, R_{free}	0.153 , 0.192 0.163 , 0.201	Depositor DCC
R_{free} test set	4148 reflections (5.25%)	DCC
Wilson B-factor (Å ²)	17.4	Xtriage
Anisotropy	0.494	Xtriage
Bulk solvent k_{sol} (e/Å ³), B_{sol} (Å ²)	0.38 , 47.5	EDS
L-test for twinning ²	$\langle L \rangle = 0.49$, $\langle L^2 \rangle = 0.33$	Xtriage
Estimated twinning fraction	No twinning to report.	Xtriage
F_o, F_c correlation	0.96	EDS
Total number of atoms	7813	wwPDB-VP
Average B, all atoms (Å ²)	20.0	wwPDB-VP

Xtriage's analysis on translational NCS is as follows: *The largest off-origin peak in the Patterson function is 7.45% of the height of the origin peak. No significant pseudotranslation is detected.*

¹Intensities estimated from amplitudes.

²Theoretical values of $\langle |L| \rangle$, $\langle L^2 \rangle$ for acentric reflections are 0.5, 0.333 respectively for untwinned datasets, and 0.375, 0.2 for perfectly twinned datasets.

5 Model quality

5.1 Standard geometry

Bond lengths and bond angles in the following residue types are not validated in this section: GOL, FTK, FAD

The Z score for a bond length (or angle) is the number of standard deviations the observed value is removed from the expected value. A bond length (or angle) with $|Z| > 5$ is considered an outlier worth inspection. RMSZ is the root-mean-square of all Z scores of the bond lengths (or angles).

Mol	Chain	Bond lengths		Bond angles	
		RMSZ	$\# Z > 5$	RMSZ	$\# Z > 5$
1	A	1.04	2/3598 (0.1%)	1.00	9/4904 (0.2%)
1	B	1.00	5/3598 (0.1%)	1.04	18/4904 (0.4%)
All	All	1.02	7/7196 (0.1%)	1.02	27/9808 (0.3%)

Chiral center outliers are detected by calculating the chiral volume of a chiral center and verifying if the center is modelled as a planar moiety or with the opposite hand. A planarity outlier is detected by checking planarity of atoms in a peptide group, atoms in a mainchain group or atoms of a sidechain that are expected to be planar.

Mol	Chain	#Chirality outliers	#Planarity outliers
1	A	0	1

All (7) bond length outliers are listed below:

Mol	Chain	Res	Type	Atoms	Z	Observed(Å)	Ideal(Å)
1	B	388	TRP	CB-CG	6.33	1.61	1.50
1	A	398	THR	CB-CG2	-5.89	1.32	1.52
1	B	402	ARG	CD-NE	-5.63	1.36	1.46
1	B	281	GLU	CD-OE2	5.60	1.31	1.25
1	B	335	GLU	CD-OE1	5.31	1.31	1.25
1	B	305	TYR	CB-CG	-5.09	1.44	1.51
1	A	375	ASN	CG-OD1	5.03	1.35	1.24

All (27) bond angle outliers are listed below:

Mol	Chain	Res	Type	Atoms	Z	Observed(°)	Ideal(°)
1	B	402	ARG	NE-CZ-NH2	-10.91	114.84	120.30
1	A	186	ASP	CB-CG-OD1	8.51	125.96	118.30
1	A	402	ARG	NE-CZ-NH2	-7.76	116.42	120.30
1	B	390	ASP	CB-CG-OD2	-7.43	111.61	118.30

Continued on next page...

Continued from previous page...

Mol	Chain	Res	Type	Atoms	Z	Observed(°)	Ideal(°)
1	B	116	LEU	CB-CG-CD1	7.34	123.48	111.00
1	B	35	ARG	NE-CZ-NH2	6.92	123.76	120.30
1	B	394	ASP	CB-CG-OD1	6.61	124.25	118.30
1	B	365	ARG	NE-CZ-NH2	-6.57	117.02	120.30
1	A	186	ASP	CB-CG-OD2	-6.24	112.69	118.30
1	A	43	ARG	NE-CZ-NH1	6.19	123.39	120.30
1	B	215	ARG	NE-CZ-NH1	6.12	123.36	120.30
1	B	334	ASP	CB-CG-OD1	5.94	123.65	118.30
1	A	234	ARG	NE-CZ-NH2	-5.91	117.34	120.30
1	B	65	ARG	NE-CZ-NH1	5.88	123.24	120.30
1	B	390	ASP	CB-CG-OD1	5.88	123.59	118.30
1	B	242	ASP	CB-CG-OD2	-5.85	113.04	118.30
1	B	186	ASP	CB-CG-OD1	5.83	123.55	118.30
1	A	365	ARG	NE-CZ-NH2	-5.65	117.47	120.30
1	B	286	LEU	CB-CG-CD1	5.62	120.55	111.00
1	B	65	ARG	NE-CZ-NH2	-5.50	117.55	120.30
1	A	35	ARG	NE-CZ-NH2	-5.47	117.57	120.30
1	A	234	ARG	CG-CD-NE	-5.45	100.35	111.80
1	B	251	ARG	NE-CZ-NH1	5.25	122.93	120.30
1	B	396	ARG	NE-CZ-NH1	5.25	122.92	120.30
1	A	34	ARG	NE-CZ-NH1	5.22	122.91	120.30
1	B	338	ASP	CB-CG-OD1	5.12	122.90	118.30
1	B	402	ARG	NE-CZ-NH1	5.04	122.82	120.30

There are no chirality outliers.

All (1) planarity outliers are listed below:

Mol	Chain	Res	Type	Group
1	A	461	PRO	Peptide

5.2 Too-close contacts ⓘ

In the following table, the Non-H and H(model) columns list the number of non-hydrogen atoms and hydrogen atoms in the chain respectively. The H(added) column lists the number of hydrogen atoms added and optimized by MolProbity. The Clashes column lists the number of clashes within the asymmetric unit, whereas Symm-Clashes lists symmetry related clashes.

Mol	Chain	Non-H	H(model)	H(added)	Clashes	Symm-Clashes
1	A	3507	0	3418	27	0
1	B	3507	0	3418	18	0
2	A	53	0	31	6	0

Continued on next page...

Continued from previous page...

Mol	Chain	Non-H	H(model)	H(added)	Clashes	Symm-Clashes
2	B	53	0	31	6	0
3	A	18	0	9	1	0
3	B	18	0	9	3	0
4	B	6	0	8	0	0
5	A	323	0	0	4	0
5	B	328	0	0	0	0
All	All	7813	0	6924	45	0

The all-atom clashscore is defined as the number of clashes found per 1000 atoms (including hydrogen atoms). The all-atom clashscore for this structure is 3.

All (45) close contacts within the same asymmetric unit are listed below, sorted by their clash magnitude.

Atom-1	Atom-2	Interatomic distance (Å)	Clash overlap (Å)
1:A:78:HIS:ND1	2:A:600:FAD:HM83	1.26	1.41
1:B:78:HIS:ND1	2:B:600:FAD:HM83	1.29	1.38
1:A:78:HIS:ND1	2:A:600:FAD:C8M	2.04	1.21
1:B:78:HIS:ND1	2:B:600:FAD:C8M	2.04	1.18
1:B:78:HIS:CE1	2:B:600:FAD:HM83	2.05	0.92
1:A:78:HIS:CE1	2:A:600:FAD:HM83	2.04	0.91
1:B:451:ASN:HD21	1:B:458:ASN:HD21	1.25	0.82
1:A:228:GLN:HE21	1:A:228:GLN:H	1.25	0.81
1:A:445:ALA:HB2	1:A:462:SER:HA	1.64	0.77
1:A:227:PRO:O	1:A:231:ARG:HD3	1.85	0.76
1:A:451:ASN:HD21	1:A:458:ASN:HD21	1.35	0.72
1:A:173:ASP:OD2	5:A:1004:HOH:O	2.14	0.65
1:B:7:ASP:OD2	1:B:10:THR:HG23	1.98	0.63
1:A:210:ARG:NH2	1:B:316:ALA:O	2.33	0.60
1:B:37:TRP:CH2	2:B:600:FAD:HM82	2.38	0.58
1:B:78:HIS:ND1	2:B:600:FAD:C8	2.66	0.57
1:A:78:HIS:ND1	2:A:600:FAD:C8	2.65	0.57
1:B:421:ASN:HB2	1:B:422:PRO:CD	2.35	0.57
1:B:357:LEU:HD11	3:B:601:FTK:H7	1.87	0.57
1:A:37:TRP:CZ3	2:A:600:FAD:HM82	2.40	0.57
1:B:37:TRP:CZ3	2:B:600:FAD:HM82	2.41	0.55
1:A:317:VAL:CG2	1:A:351:PHE:CZ	2.92	0.53
1:A:245:THR:HG21	3:A:601:FTK:H3	1.91	0.51
1:A:18:PHE:CE2	1:A:22:LEU:HD13	2.45	0.51
1:A:336:ALA:O	1:A:340:VAL:HG13	2.12	0.50
1:A:228:GLN:N	1:A:228:GLN:HE21	2.02	0.48
1:A:317:VAL:HG21	1:A:351:PHE:CZ	2.48	0.48

Continued on next page...

Continued from previous page...

Atom-1	Atom-2	Interatomic distance (Å)	Clash overlap (Å)
1:A:37:TRP:CH2	2:A:600:FAD:HM82	2.50	0.47
3:B:601:FTK:O9	3:B:601:FTK:H1	2.14	0.46
1:A:35:ARG:HD2	5:A:707:HOH:O	2.15	0.45
1:A:294:LYS:HD2	1:A:295:PRO:HD2	1.98	0.45
1:B:322:ILE:HD12	1:B:322:ILE:C	2.37	0.43
1:B:63:PHE:O	1:B:67:SER:HB3	2.19	0.43
1:B:35:ARG:NH2	1:B:36:ILE:O	2.52	0.42
1:A:393:GLU:HB3	1:A:397:HIS:CD2	2.54	0.42
1:A:249:TYR:CE2	1:A:272:MET:HE2	2.54	0.42
1:B:421:ASN:HB2	1:B:422:PRO:HD2	2.02	0.42
1:A:35:ARG:NH2	5:A:1008:HOH:O	2.53	0.41
1:B:151:GLY:HA2	3:B:601:FTK:C5	2.49	0.41
1:A:54:THR:N	1:A:55:PRO:CD	2.82	0.41
1:A:286:LEU:O	1:A:290:LEU:HG	2.21	0.41
1:B:329:LEU:HD12	1:B:329:LEU:N	2.35	0.40
1:A:50:ARG:HD2	5:A:710:HOH:O	2.20	0.40
1:B:98:ASN:OD1	1:B:115:CYS:HA	2.22	0.40
1:A:317:VAL:CG2	1:A:351:PHE:CE1	3.04	0.40

There are no symmetry-related clashes.

5.3 Torsion angles

5.3.1 Protein backbone

In the following table, the Percentiles column shows the percent Ramachandran outliers of the chain as a percentile score with respect to all X-ray entries followed by that with respect to entries of similar resolution.

The Analysed column shows the number of residues for which the backbone conformation was analysed, and the total number of residues.

Mol	Chain	Analysed	Favoured	Allowed	Outliers	Percentiles	
1	A	459/468 (98%)	451 (98%)	8 (2%)	0	100	100
1	B	459/468 (98%)	452 (98%)	7 (2%)	0	100	100
All	All	918/936 (98%)	903 (98%)	15 (2%)	0	100	100

There are no Ramachandran outliers to report.

5.3.2 Protein sidechains ⓘ

In the following table, the Percentiles column shows the percent sidechain outliers of the chain as a percentile score with respect to all X-ray entries followed by that with respect to entries of similar resolution.

The Analysed column shows the number of residues for which the sidechain conformation was analysed, and the total number of residues.

Mol	Chain	Analysed	Rotameric	Outliers	Percentiles	
1	A	356/361 (99%)	349 (98%)	7 (2%)	60	47
1	B	356/361 (99%)	345 (97%)	11 (3%)	45	28
All	All	712/722 (99%)	694 (98%)	18 (2%)	53	37

All (18) residues with a non-rotameric sidechain are listed below:

Mol	Chain	Res	Type
1	A	6	LEU
1	A	22	LEU
1	A	131	THR
1	A	228	GLN
1	A	234	ARG
1	A	353	GLN
1	A	426	ASP
1	B	10	THR
1	B	106	LEU
1	B	116	LEU
1	B	131	THR
1	B	262	ASP
1	B	284	ARG
1	B	286	LEU
1	B	354	LEU
1	B	426	ASP
1	B	438	GLU
1	B	455	LEU

Some sidechains can be flipped to improve hydrogen bonding and reduce clashes. All (11) such sidechains are listed below:

Mol	Chain	Res	Type
1	A	125	GLN
1	A	228	GLN
1	A	330	ASN
1	A	375	ASN

Continued on next page...

Continued from previous page...

Mol	Chain	Res	Type
1	A	418	ASN
1	A	458	ASN
1	B	125	GLN
1	B	163	ASN
1	B	330	ASN
1	B	457	GLN
1	B	458	ASN

5.3.3 RNA ⓘ

There are no RNA molecules in this entry.

5.4 Non-standard residues in protein, DNA, RNA chains ⓘ

There are no non-standard protein/DNA/RNA residues in this entry.

5.5 Carbohydrates ⓘ

There are no carbohydrates in this entry.

5.6 Ligand geometry ⓘ

5 ligands are modelled in this entry.

In the following table, the Counts columns list the number of bonds (or angles) for which Mogul statistics could be retrieved, the number of bonds (or angles) that are observed in the model and the number of bonds (or angles) that are defined in the chemical component dictionary. The Link column lists molecule types, if any, to which the group is linked. The Z score for a bond length (or angle) is the number of standard deviations the observed value is removed from the expected value. A bond length (or angle) with $|Z| > 2$ is considered an outlier worth inspection. RMSZ is the root-mean-square of all Z scores of the bond lengths (or angles).

Mol	Type	Chain	Res	Link	Bond lengths			Bond angles		
					Counts	RMSZ	# Z > 2	Counts	RMSZ	# Z > 2
2	FAD	A	600	-	51,58,58	1.51	8 (15%)	54,89,89	2.19	9 (16%)
3	FTK	A	601	-	18,18,18	1.49	3 (16%)	22,25,25	2.35	12 (54%)
2	FAD	B	600	-	51,58,58	1.53	9 (17%)	54,89,89	2.55	9 (16%)
3	FTK	B	601	-	18,18,18	1.62	2 (11%)	22,25,25	4.01	9 (40%)
4	GOL	B	602	-	5,5,5	0.37	0	5,5,5	1.17	1 (20%)

In the following table, the Chirals column lists the number of chiral outliers, the number of chiral centers analysed, the number of these observed in the model and the number defined in the chemical component dictionary. Similar counts are reported in the Torsion and Rings columns. '-' means no outliers of that kind were identified.

Mol	Type	Chain	Res	Link	Chirals	Torsions	Rings
2	FAD	A	600	-	-	0/28/50/50	0/6/6/6
3	FTK	A	601	-	-	0/18/18/18	0/1/1/1
2	FAD	B	600	-	-	0/28/50/50	0/6/6/6
3	FTK	B	601	-	-	0/18/18/18	0/1/1/1
4	GOL	B	602	-	-	0/4/4/4	0/0/0/0

All (22) bond length outliers are listed below:

Mol	Chain	Res	Type	Atoms	Z	Observed(Å)	Ideal(Å)
2	A	600	FAD	C2B-C1B	-2.95	1.49	1.53
2	B	600	FAD	C2-N3	-2.93	1.32	1.38
2	B	600	FAD	C2'-C3'	-2.63	1.48	1.53
2	A	600	FAD	C2A-N1A	-2.46	1.29	1.33
2	A	600	FAD	C6-C5X	-2.15	1.38	1.41
2	B	600	FAD	C5'-C4'	-2.11	1.48	1.51
3	B	601	FTK	O9-C9	2.20	1.25	1.21
2	A	600	FAD	O4'-C4'	2.28	1.48	1.43
2	B	600	FAD	C2A-N3A	2.34	1.36	1.32
3	A	601	FTK	O7-C7	2.42	1.26	1.22
2	B	600	FAD	C8M-C8	2.47	1.55	1.51
2	B	600	FAD	O2B-C2B	2.68	1.49	1.43
2	B	600	FAD	O4B-C1B	2.85	1.45	1.41
3	A	601	FTK	O9-C9	3.28	1.27	1.21
2	A	600	FAD	C5X-N5	3.62	1.40	1.35
2	B	600	FAD	C4X-C10	3.65	1.47	1.41
3	A	601	FTK	O11-C11	3.85	1.28	1.21
2	A	600	FAD	O4B-C1B	3.94	1.46	1.41
2	A	600	FAD	C4X-N5	4.15	1.39	1.33
2	B	600	FAD	C4X-N5	4.42	1.39	1.33
2	A	600	FAD	C4X-C10	5.17	1.50	1.41
3	B	601	FTK	O11-C11	5.79	1.31	1.21

All (40) bond angle outliers are listed below:

Mol	Chain	Res	Type	Atoms	Z	Observed(°)	Ideal(°)
3	B	601	FTK	O7-C7-C8	-11.65	107.23	120.58
2	B	600	FAD	C4X-C10-N10	-9.66	113.81	120.52
3	B	601	FTK	O9-C9-C8	-6.74	109.34	120.80

Continued on next page...

Continued from previous page...

Mol	Chain	Res	Type	Atoms	Z	Observed(°)	Ideal(°)
2	A	600	FAD	C4X-C10-N10	-5.90	116.42	120.52
2	B	600	FAD	N3A-C2A-N1A	-4.87	124.62	128.86
2	A	600	FAD	N3A-C2A-N1A	-4.71	124.75	128.86
2	A	600	FAD	C4X-C4-N3	-4.51	117.06	123.48
3	B	601	FTK	O7-C7-C6	-4.48	114.07	120.74
2	B	600	FAD	C4-C4X-C10	-4.46	116.35	119.96
2	B	600	FAD	C4X-C4-N3	-4.39	117.24	123.48
3	A	601	FTK	F2-C12-F3	-4.18	86.62	106.13
3	B	601	FTK	F1-C12-F3	-3.19	91.22	106.13
2	B	600	FAD	C4B-O4B-C1B	-3.10	106.47	109.77
3	B	601	FTK	F2-C12-F3	-2.69	93.57	106.13
3	A	601	FTK	O9-C9-C8	-2.69	116.23	120.80
3	A	601	FTK	F2-C12-F1	-2.61	93.93	106.13
3	A	601	FTK	O11-C11-C10	-2.42	111.17	122.05
4	B	602	GOL	C3-C2-C1	-2.37	102.09	111.52
3	A	601	FTK	C8-C7-C6	-2.34	114.35	119.09
3	A	601	FTK	C5-C6-C7	-2.32	115.33	120.60
3	A	601	FTK	F1-C12-F3	-2.15	96.10	106.13
2	A	600	FAD	C4-C4X-C10	-2.14	118.23	119.96
3	B	601	FTK	F2-C12-F1	-2.13	96.19	106.13
2	B	600	FAD	C8M-C8-C9	-2.07	115.14	120.34
2	A	600	FAD	C7M-C7-C6	-2.01	115.29	120.34
2	A	600	FAD	C1'-N10-C10	-2.00	116.45	118.50
2	A	600	FAD	C4-C4X-N5	2.09	120.97	118.68
3	A	601	FTK	F3-C12-C11	2.23	123.80	112.62
2	B	600	FAD	C4-C4X-N5	2.41	121.32	118.68
3	A	601	FTK	C1-C6-C5	3.02	122.76	118.58
3	B	601	FTK	F1-C12-C11	3.07	128.01	112.62
3	A	601	FTK	F1-C12-C11	3.20	128.64	112.62
2	B	600	FAD	C4X-N5-C5X	3.37	120.32	116.76
3	B	601	FTK	C10-C9-C8	3.90	127.86	118.54
3	A	601	FTK	O11-C11-C12	4.08	127.38	116.16
3	A	601	FTK	O7-C7-C8	4.35	125.57	120.58
2	A	600	FAD	C1'-N10-C9A	5.01	122.94	118.35
3	B	601	FTK	C8-C7-C6	9.63	138.55	119.09
2	A	600	FAD	C4-N3-C2	9.75	123.69	115.16
2	B	600	FAD	C4-N3-C2	10.49	124.33	115.16

There are no chirality outliers.

There are no torsion outliers.

There are no ring outliers.

4 monomers are involved in 16 short contacts:

Mol	Chain	Res	Type	Clashes	Symm-Clashes
2	A	600	FAD	6	0
3	A	601	FTK	1	0
2	B	600	FAD	6	0
3	B	601	FTK	3	0

5.7 Other polymers [i](#)

There are no such residues in this entry.

5.8 Polymer linkage issues [i](#)

There are no chain breaks in this entry.

6 Fit of model and data [i](#)

6.1 Protein, DNA and RNA chains [i](#)

In the following table, the column labelled ‘#RSRZ> 2’ contains the number (and percentage) of RSRZ outliers, followed by percent RSRZ outliers for the chain as percentile scores relative to all X-ray entries and entries of similar resolution. The OWAB column contains the minimum, median, 95th percentile and maximum values of the occupancy-weighted average B-factor per residue. The column labelled ‘Q< 0.9’ lists the number of (and percentage) of residues with an average occupancy less than 0.9.

Mol	Chain	Analysed	<RSRZ>	#RSRZ>2	OWAB(Å ²)	Q<0.9
1	A	461/468 (98%)	-0.46	0 100 100	10, 17, 31, 43	0
1	B	461/468 (98%)	-0.40	2 (0%) 92 90	10, 18, 35, 49	0
All	All	922/936 (98%)	-0.43	2 (0%) 94 92	10, 18, 33, 49	0

All (2) RSRZ outliers are listed below:

Mol	Chain	Res	Type	RSRZ
1	B	3	PHE	2.7
1	B	4	PRO	2.3

6.2 Non-standard residues in protein, DNA, RNA chains [i](#)

There are no non-standard protein/DNA/RNA residues in this entry.

6.3 Carbohydrates [i](#)

There are no carbohydrates in this entry.

6.4 Ligands [i](#)

In the following table, the Atoms column lists the number of modelled atoms in the group and the number defined in the chemical component dictionary. LLDF column lists the quality of electron density of the group with respect to its neighbouring residues in protein, DNA or RNA chains. The B-factors column lists the minimum, median, 95th percentile and maximum values of B factors of atoms in the group. The column labelled ‘Q< 0.9’ lists the number of atoms with occupancy less than 0.9.

Mol	Type	Chain	Res	Atoms	RSCC	RSR	LLDF	B-factors(Å ²)	Q<0.9
3	FTK	A	601	18/18	0.73	0.21	4.74	20,23,34,39	18

Continued on next page...

Continued from previous page...

Mol	Type	Chain	Res	Atoms	RSCC	RSR	LLDF	B-factors(\AA^2)	Q<0.9
3	FTK	B	601	18/18	0.74	0.21	4.13	17,24,35,36	18
4	GOL	B	602	6/6	0.95	0.12	2.38	17,21,29,36	0
2	FAD	B	600	53/53	0.98	0.08	-0.25	9,11,14,18	0
2	FAD	A	600	53/53	0.98	0.08	-0.26	9,10,14,16	0

6.5 Other polymers [i](#)

There are no such residues in this entry.