



Full wwPDB X-ray Structure Validation Report ⓘ

Mar 10, 2018 – 10:44 AM EST

PDB ID : 5WAC
Title : ADC-7 in complex with boronic acid transition state inhibitor CR157
Authors : Powers, R.A.; Wallar, B.J.
Deposited on : 2017-06-26
Resolution : 2.06 Å(reported)

This is a Full wwPDB X-ray Structure Validation Report for a publicly released PDB entry.

We welcome your comments at validation@mail.wwpdb.org

A user guide is available at

<http://wwpdb.org/validation/2016/XrayValidationReportHelp>

with specific help available everywhere you see the ⓘ symbol.

The following versions of software and data (see [references ⓘ](#)) were used in the production of this report:

MolProbity : 4.02b-467
Mogul : 1.7.2 (RC1), CSD as538be (2017)
Xtriage (Phenix) : 1.9-1692
EDS : rb-20030736
Percentile statistics : 20161228.v01 (using entries in the PDB archive December 28th 2016)
Refmac : 5.8.0135
CCP4 : 6.5.0
Ideal geometry (proteins) : Engh & Huber (2001)
Ideal geometry (DNA, RNA) : Parkinson et al. (1996)
Validation Pipeline (wwPDB-VP) : rb-20030736

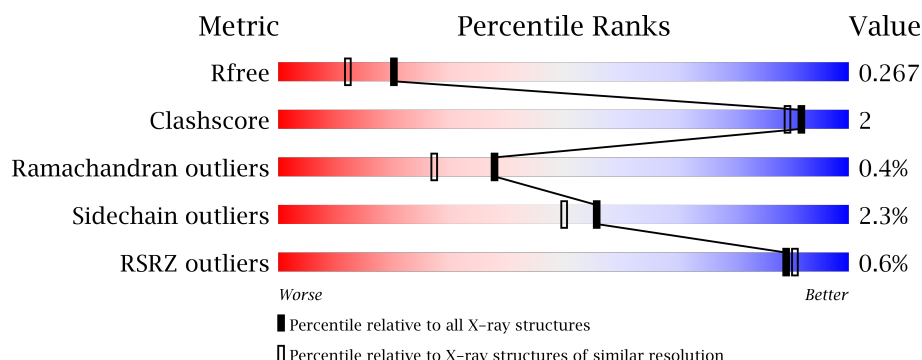
1 Overall quality at a glance

The following experimental techniques were used to determine the structure:

X-RAY DIFFRACTION

The reported resolution of this entry is 2.06 Å.

Percentile scores (ranging between 0-100) for global validation metrics of the entry are shown in the following graphic. The table shows the number of entries on which the scores are based.



Metric	Whole archive (#Entries)	Similar resolution (#Entries, resolution range(Å))
R_{free}	100719	2028 (2.08-2.04)
Clashscore	112137	2143 (2.08-2.04)
Ramachandran outliers	110173	2126 (2.08-2.04)
Sidechain outliers	110143	2126 (2.08-2.04)
RSRZ outliers	101464	2035 (2.08-2.04)

The table below summarises the geometric issues observed across the polymeric chains and their fit to the electron density. The red, orange, yellow and green segments on the lower bar indicate the fraction of residues that contain outliers for ≥ 3 , 2, 1 and 0 types of geometric quality criteria. A grey segment represents the fraction of residues that are not modelled. The numeric value for each fraction is indicated below the corresponding segment, with a dot representing fractions $\leq 5\%$. The upper red bar (where present) indicates the fraction of residues that have poor fit to the electron density. The numeric value is given above the bar.

Mol	Chain	Length	Quality of chain
1	A	361	
1	B	361	
1	C	361	
1	D	361	

2 Entry composition

There are 3 unique types of molecules in this entry. The entry contains 11073 atoms, of which 0 are hydrogens and 0 are deuteriums.

In the tables below, the ZeroOcc column contains the number of atoms modelled with zero occupancy, the AltConf column contains the number of residues with at least one atom in alternate conformation and the Trace column contains the number of residues modelled with at most 2 atoms.

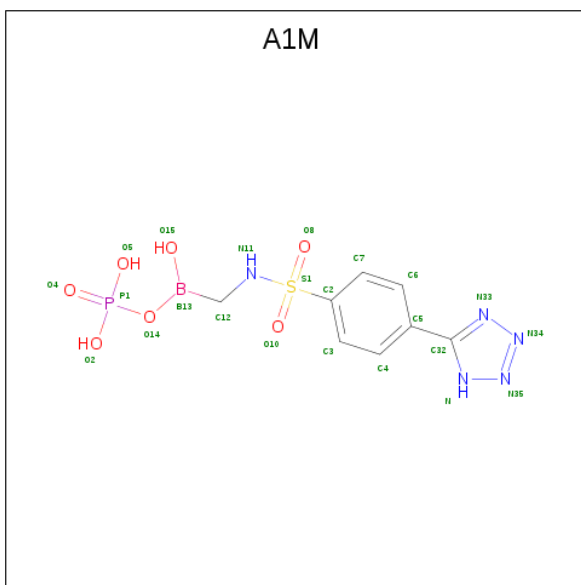
- Molecule 1 is a protein called Beta-lactamase.

Mol	Chain	Residues	Atoms					ZeroOcc	AltConf	Trace
1	A	355	Total	C	N	O	S	0	0	0
			2732	1760	449	514	9			
1	B	359	Total	C	N	O	S	0	1	0
			2815	1819	460	527	9			
1	C	352	Total	C	N	O	S	0	0	0
			2628	1692	435	492	9			
1	D	352	Total	C	N	O	S	0	0	0
			2617	1678	435	495	9			

There are 4 discrepancies between the modelled and reference sequences:

Chain	Residue	Modelled	Actual	Comment	Reference
A	-1	MET	-	expression tag	UNP Q6DRA1
B	-1	MET	-	expression tag	UNP Q6DRA1
C	-1	MET	-	expression tag	UNP Q6DRA1
D	-1	MET	-	expression tag	UNP Q6DRA1

- Molecule 2 is phosphonoxy-[[[4-(1 {H}-1,2,3,4-tetrazol-5-yl)phenyl]sulfonylamino]methyl]borinic acid (three-letter code: A1M) (formula: C₈H₁₁BN₅O₇PS).



Mol	Chain	Residues	Atoms							ZeroOcc	AltConf
2	A	1	Total	B	C	N	O	P	S	0	0
			23	1	8	5	7	1	1		
2	B	1	Total	B	C	N	O	P	S	0	0
			23	1	8	5	7	1	1		
2	C	1	Total	B	C	N	O	P	S	0	0
			23	1	8	5	7	1	1		
2	D	1	Total	B	C	N	O	P	S	0	0
			23	1	8	5	7	1	1		

- Molecule 3 is water.

Mol	Chain	Residues	Atoms		ZeroOcc	AltConf
3	A	60	Total	O	0	0
			60	60		
3	B	87	Total	O	0	1
			88	88		
3	C	16	Total	O	0	0
			16	16		
3	D	25	Total	O	0	0
			25	25		

3 Residue-property plots [i](#)

These plots are drawn for all protein, RNA and DNA chains in the entry. The first graphic for a chain summarises the proportions of the various outlier classes displayed in the second graphic. The second graphic shows the sequence view annotated by issues in geometry and electron density. Residues are color-coded according to the number of geometric quality criteria for which they contain at least one outlier: green = 0, yellow = 1, orange = 2 and red = 3 or more. A red dot above a residue indicates a poor fit to the electron density ($RSRZ > 2$). Stretches of 2 or more consecutive residues without any outlier are shown as a green connector. Residues present in the sample, but not in the model, are shown in grey.

• Molecule 1: Beta-lactamase

Chain A: 



• Molecule 1: Beta-lactamase

Chain B: 




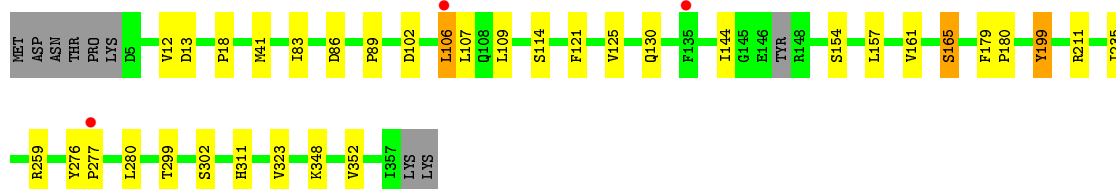
• Molecule 1: Beta-lactamase

Chain C: 



• Molecule 1: Beta-lactamase

Chain D: 



4 Data and refinement statistics

Property	Value	Source
Space group	P 1 21 1	Depositor
Cell constants a, b, c, α , β , γ	88.35Å 80.67Å 104.98Å 90.00° 113.42° 90.00°	Depositor
Resolution (Å)	48.17 – 2.06 48.17 – 2.06	Depositor EDS
% Data completeness (in resolution range)	98.9 (48.17-2.06) 98.9 (48.17-2.06)	Depositor EDS
R_{merge}	0.07	Depositor
R_{sym}	(Not available)	Depositor
$\langle I/\sigma(I) \rangle$ ¹	2.36 (at 2.07Å)	Xtriage
Refinement program	REFMAC 5.8.0103	Depositor
R, R_{free}	0.203 , 0.264 0.210 , 0.267	Depositor DCC
R_{free} test set	4129 reflections (5.25%)	DCC
Wilson B-factor (Å ²)	34.8	Xtriage
Anisotropy	0.093	Xtriage
Bulk solvent k_{sol} (e/Å ³), B_{sol} (Å ²)	0.33 , 41.0	EDS
L-test for twinning ²	$\langle L \rangle = 0.48$, $\langle L^2 \rangle = 0.31$	Xtriage
Estimated twinning fraction	0.024 for h,-k,-h-l	Xtriage
F_o, F_c correlation	0.95	EDS
Total number of atoms	11073	wwPDB-VP
Average B, all atoms (Å ²)	44.0	wwPDB-VP

Xtriage's analysis on translational NCS is as follows: *The analyses of the Patterson function reveals a significant off-origin peak that is 36.32 % of the origin peak, indicating pseudo translational symmetry. The chance of finding a peak of this or larger height randomly in a structure without pseudo translational symmetry is equal to 5.0912e-04. The detected translational NCS is most likely also responsible for the elevated intensity ratio.*

¹ Intensities estimated from amplitudes.

² Theoretical values of $\langle |L| \rangle$, $\langle L^2 \rangle$ for acentric reflections are 0.5, 0.333 respectively for untwinned datasets, and 0.375, 0.2 for perfectly twinned datasets.

5 Model quality [i](#)

5.1 Standard geometry [i](#)

Bond lengths and bond angles in the following residue types are not validated in this section: A1M

The Z score for a bond length (or angle) is the number of standard deviations the observed value is removed from the expected value. A bond length (or angle) with $|Z| > 5$ is considered an outlier worth inspection. RMSZ is the root-mean-square of all Z scores of the bond lengths (or angles).

Mol	Chain	Bond lengths		Bond angles	
		RMSZ	# Z >5	RMSZ	# Z >5
1	A	0.80	0/2799	0.82	1/3817 (0.0%)
1	B	0.82	1/2883 (0.0%)	0.84	3/3919 (0.1%)
1	C	0.68	0/2694	0.77	1/3681 (0.0%)
1	D	0.70	0/2680	0.77	0/3665
All	All	0.75	1/11056 (0.0%)	0.80	5/15082 (0.0%)

All (1) bond length outliers are listed below:

Mol	Chain	Res	Type	Atoms	Z	Observed(Å)	Ideal(Å)
1	B	138	TRP	CB-CG	-5.50	1.40	1.50

All (5) bond angle outliers are listed below:

Mol	Chain	Res	Type	Atoms	Z	Observed(°)	Ideal(°)
1	B	218	ASP	CB-CG-OD1	5.95	123.66	118.30
1	C	218	ASP	CB-CG-OD1	5.89	123.60	118.30
1	B	346	ARG	NE-CZ-NH2	-5.77	117.42	120.30
1	A	13	ASP	CB-CG-OD1	5.58	123.32	118.30
1	B	148	ARG	NE-CZ-NH1	5.48	123.04	120.30

There are no chirality outliers.

There are no planarity outliers.

5.2 Too-close contacts [i](#)

In the following table, the Non-H and H(model) columns list the number of non-hydrogen atoms and hydrogen atoms in the chain respectively. The H(added) column lists the number of hydrogen atoms added and optimized by MolProbity. The Clashes column lists the number of clashes within the asymmetric unit, whereas Symm-Clashes lists symmetry related clashes.

Mol	Chain	Non-H	H(model)	H(added)	Clashes	Symm-Clashes
1	A	2732	0	2643	8	0
1	B	2815	0	2766	6	0
1	C	2628	0	2449	7	0
1	D	2617	0	2426	18	0
2	A	23	0	0	0	0
2	B	23	0	0	1	0
2	C	23	0	0	0	0
2	D	23	0	0	0	0
3	A	60	0	0	0	0
3	B	88	0	0	0	0
3	C	16	0	0	0	0
3	D	25	0	0	0	0
All	All	11073	0	10284	40	0

The all-atom clashscore is defined as the number of clashes found per 1000 atoms (including hydrogen atoms). The all-atom clashscore for this structure is 2.

All (40) close contacts within the same asymmetric unit are listed below, sorted by their clash magnitude.

Atom-1	Atom-2	Interatomic distance (Å)	Clash overlap (Å)
1:A:235:ILE:HD11	1:A:323:VAL:CG1	2.07	0.84
1:A:235:ILE:HD11	1:A:323:VAL:HG13	1.61	0.83
1:D:199:TYR:CZ	1:D:211:ARG:HD3	2.43	0.53
1:D:12:VAL:HG21	1:D:41:MET:HE2	1.90	0.53
1:D:125:VAL:HG12	1:D:130:GLN:HB3	1.91	0.53
1:D:109:LEU:O	1:D:154:SER:OG	2.25	0.52
1:D:121:PHE:HB3	1:D:125:VAL:CG2	2.40	0.52
1:B:87:ASP:OD2	1:B:92:TYR:OH	2.26	0.51
1:D:121:PHE:HB3	1:D:125:VAL:HG23	1.93	0.51
1:B:125:VAL:O	1:B:216:PRO:HG3	2.11	0.51
1:B:202:GLY:O	1:B:209:PRO:HA	2.12	0.48
1:D:89:PRO:HD2	1:D:102:ASP:HA	1.97	0.47
1:D:12:VAL:HG21	1:D:41:MET:CE	2.44	0.47
1:D:109:LEU:HD11	1:D:157:LEU:HD23	1.97	0.47
1:C:98:ASN:OD1	1:C:98:ASN:N	2.48	0.47
1:C:299:THR:HG22	1:C:300:ALA:O	2.16	0.46
1:D:109:LEU:CD1	1:D:157:LEU:HD23	2.46	0.46
1:C:276:TYR:CD1	1:C:277:PRO:HA	2.51	0.46
1:A:199:TYR:CZ	1:A:211:ARG:HD3	2.51	0.46
1:C:219:ALA:HB3	1:C:220:PRO:HD3	1.98	0.45
1:D:348:LYS:O	1:D:352:VAL:HG23	2.17	0.45
1:D:107:LEU:HD11	1:D:259:ARG:HD2	1.99	0.45

Continued on next page...

Continued from previous page...

Atom-1	Atom-2	Interatomic distance (Å)	Clash overlap (Å)
1:D:13:ASP:O	1:D:18:PRO:HD3	2.17	0.44
1:A:202:GLY:O	1:A:209:PRO:HA	2.18	0.43
1:A:65:VAL:HG21	1:A:321:THR:HG22	1.99	0.43
1:C:93:TRP:CZ2	1:C:132:LEU:HD13	2.54	0.42
1:B:85:PHE:HB3	1:B:107:LEU:HB2	2.01	0.42
1:D:179:PHE:HB2	1:D:180:PRO:HD3	2.01	0.42
1:D:83:ILE:HG22	1:D:165:SER:HB2	2.01	0.42
1:A:85:PHE:HB3	1:A:107:LEU:HB2	2.01	0.42
2:B:401:A1M:O4	2:B:401:A1M:N11	2.53	0.42
1:D:106:LEU:HD21	1:D:161:VAL:HG11	2.02	0.41
1:B:88:THR:HB	1:B:89:PRO:HD2	2.02	0.41
1:C:88:THR:HB	1:C:89:PRO:HD2	2.02	0.41
1:A:280:LEU:HD22	1:A:284:LEU:HG	2.03	0.41
1:B:64:SER:OG	1:B:67:LYS:NZ	2.50	0.41
1:C:9:LYS:HD2	1:C:41:MET:HG2	2.03	0.41
1:A:276:TYR:CD1	1:A:277:PRO:HA	2.57	0.40
1:D:235:ILE:HD11	1:D:323:VAL:HB	2.04	0.40
1:D:276:TYR:CD1	1:D:277:PRO:HA	2.56	0.40

There are no symmetry-related clashes.

5.3 Torsion angles [i](#)

5.3.1 Protein backbone [i](#)

In the following table, the Percentiles column shows the percent Ramachandran outliers of the chain as a percentile score with respect to all X-ray entries followed by that with respect to entries of similar resolution.

The Analysed column shows the number of residues for which the backbone conformation was analysed, and the total number of residues.

Mol	Chain	Analysed	Favoured	Allowed	Outliers	Percentiles	
1	A	353/361 (98%)	339 (96%)	14 (4%)	0	100	100
1	B	358/361 (99%)	348 (97%)	10 (3%)	0	100	100
1	C	348/361 (96%)	327 (94%)	19 (6%)	2 (1%)	28	17
1	D	348/361 (96%)	328 (94%)	17 (5%)	3 (1%)	20	9
All	All	1407/1444 (97%)	1342 (95%)	60 (4%)	5 (0%)	38	27

All (5) Ramachandran outliers are listed below:

Mol	Chain	Res	Type
1	D	114	SER
1	C	243	LYS
1	C	245	PRO
1	D	302	SER
1	D	144	ILE

5.3.2 Protein sidechains ⓘ

In the following table, the Percentiles column shows the percent sidechain outliers of the chain as a percentile score with respect to all X-ray entries followed by that with respect to entries of similar resolution.

The Analysed column shows the number of residues for which the sidechain conformation was analysed, and the total number of residues.

Mol	Chain	Analysed	Rotameric	Outliers	Percentiles	
1	A	288/319 (90%)	282 (98%)	6 (2%)	59	54
1	B	297/319 (93%)	291 (98%)	6 (2%)	60	56
1	C	261/319 (82%)	255 (98%)	6 (2%)	56	50
1	D	260/319 (82%)	253 (97%)	7 (3%)	50	44
All	All	1106/1276 (87%)	1081 (98%)	25 (2%)	56	50

All (25) residues with a non-rotameric sidechain are listed below:

Mol	Chain	Res	Type
1	A	199	TYR
1	A	225	LYS
1	A	240	ASN
1	A	280	LEU
1	A	311	HIS
1	A	327	PRO
1	B	1	ASN
1	B	41	MET
1	B	128	ASP
1	B	194	THR
1	B	199	TYR
1	B	311	HIS
1	C	98	ASN
1	C	149	GLN
1	C	164	LEU
1	C	171	ASP
1	C	194	THR

Continued on next page...

Continued from previous page...

Mol	Chain	Res	Type
1	C	311	HIS
1	D	86	ASP
1	D	106	LEU
1	D	165	SER
1	D	199	TYR
1	D	280	LEU
1	D	299	THR
1	D	311	HIS

Some sidechains can be flipped to improve hydrogen bonding and reduce clashes. All (1) such sidechains are listed below:

Mol	Chain	Res	Type
1	C	149	GLN

5.3.3 RNA [i](#)

There are no RNA molecules in this entry.

5.4 Non-standard residues in protein, DNA, RNA chains [i](#)

There are no non-standard protein/DNA/RNA residues in this entry.

5.5 Carbohydrates [i](#)

There are no carbohydrates in this entry.

5.6 Ligand geometry [i](#)

4 ligands are modelled in this entry.

In the following table, the Counts columns list the number of bonds (or angles) for which Mogul statistics could be retrieved, the number of bonds (or angles) that are observed in the model and the number of bonds (or angles) that are defined in the Chemical Component Dictionary. The Link column lists molecule types, if any, to which the group is linked. The Z score for a bond length (or angle) is the number of standard deviations the observed value is removed from the expected value. A bond length (or angle) with $|Z| > 2$ is considered an outlier worth inspection. RMSZ is the root-mean-square of all Z scores of the bond lengths (or angles).

Mol	Type	Chain	Res	Link	Bond lengths			Bond angles		
					Counts	RMSZ	# Z > 2	Counts	RMSZ	# Z > 2
2	A1M	A	401	1	22,24,24	3.08	5 (22%)	29,35,35	3.24	11 (37%)
2	A1M	B	401	1	22,24,24	3.07	7 (31%)	29,35,35	3.08	9 (31%)
2	A1M	C	401	1	22,24,24	2.88	5 (22%)	29,35,35	3.22	12 (41%)
2	A1M	D	401	1	22,24,24	3.20	6 (27%)	29,35,35	3.75	12 (41%)

In the following table, the Chirals column lists the number of chiral outliers, the number of chiral centers analysed, the number of these observed in the model and the number defined in the Chemical Component Dictionary. Similar counts are reported in the Torsion and Rings columns. '-' means no outliers of that kind were identified.

Mol	Type	Chain	Res	Link	Chirals	Torsions	Rings
2	A1M	A	401	1	-	0/13/21/21	0/2/2/2
2	A1M	B	401	1	-	0/13/21/21	0/2/2/2
2	A1M	C	401	1	-	0/13/21/21	0/2/2/2
2	A1M	D	401	1	-	0/13/21/21	0/2/2/2

All (23) bond length outliers are listed below:

Mol	Chain	Res	Type	Atoms	Z	Observed(Å)	Ideal(Å)
2	D	401	A1M	C2-S1	-10.39	1.61	1.76
2	B	401	A1M	C2-S1	-9.82	1.62	1.76
2	A	401	A1M	C2-S1	-9.59	1.62	1.76
2	C	401	A1M	C2-S1	-9.22	1.63	1.76
2	D	401	A1M	S1-N11	2.37	1.64	1.61
2	D	401	A1M	N-N35	2.39	1.38	1.34
2	B	401	A1M	O8-S1	2.75	1.46	1.43
2	B	401	A1M	S1-N11	2.78	1.65	1.61
2	A	401	A1M	B13-C12	2.83	1.60	1.56
2	B	401	A1M	N-N35	3.27	1.39	1.34
2	C	401	A1M	B13-C12	3.32	1.61	1.56
2	B	401	A1M	B13-C12	3.34	1.61	1.56
2	D	401	A1M	B13-C12	3.81	1.61	1.56
2	C	401	A1M	N-N35	3.86	1.40	1.34
2	C	401	A1M	N33-N34	3.96	1.41	1.34
2	B	401	A1M	N33-N34	4.15	1.41	1.34
2	A	401	A1M	N-N35	4.69	1.42	1.34
2	D	401	A1M	N33-N34	5.40	1.43	1.34
2	A	401	A1M	N33-N34	5.48	1.43	1.34
2	A	401	A1M	N34-N35	5.77	1.40	1.32
2	C	401	A1M	N34-N35	6.20	1.41	1.32
2	D	401	A1M	N34-N35	6.65	1.42	1.32

Continued on next page...

Continued from previous page...

Mol	Chain	Res	Type	Atoms	Z	Observed(Å)	Ideal(Å)
2	B	401	A1M	N34-N35	6.71	1.42	1.32

All (44) bond angle outliers are listed below:

Mol	Chain	Res	Type	Atoms	Z	Observed(°)	Ideal(°)
2	D	401	A1M	O10-S1-O8	-10.76	105.79	119.55
2	A	401	A1M	N-N35-N34	-9.59	103.02	109.54
2	C	401	A1M	N-N35-N34	-9.26	103.24	109.54
2	B	401	A1M	N-N35-N34	-8.17	103.98	109.54
2	B	401	A1M	O10-S1-O8	-7.32	110.19	119.55
2	D	401	A1M	N-N35-N34	-7.29	104.58	109.54
2	C	401	A1M	O10-S1-O8	-6.77	110.89	119.55
2	D	401	A1M	C5-C32-N	-6.76	115.30	124.20
2	A	401	A1M	O10-S1-O8	-6.75	110.91	119.55
2	B	401	A1M	C5-C32-N	-5.08	117.51	124.20
2	C	401	A1M	C5-C32-N	-4.19	118.68	124.20
2	D	401	A1M	C12-N11-S1	-4.09	111.53	119.45
2	A	401	A1M	C5-C32-N	-3.97	118.97	124.20
2	A	401	A1M	C12-N11-S1	-3.25	113.16	119.45
2	A	401	A1M	O10-S1-N11	-3.12	102.00	107.03
2	B	401	A1M	C12-N11-S1	-2.82	113.99	119.45
2	D	401	A1M	O5-P1-O14	-2.69	100.92	109.52
2	C	401	A1M	C12-N11-S1	-2.67	114.29	119.45
2	D	401	A1M	N33-N34-N35	-2.53	107.82	109.54
2	C	401	A1M	C6-C5-C32	-2.48	116.69	120.79
2	C	401	A1M	O5-P1-O14	2.22	116.60	109.52
2	A	401	A1M	O2-P1-O14	2.33	116.95	109.52
2	C	401	A1M	C4-C5-C32	2.38	124.71	120.79
2	A	401	A1M	O10-S1-C2	2.45	110.98	107.95
2	D	401	A1M	O2-P1-O14	2.65	117.98	109.52
2	D	401	A1M	C2-S1-N11	2.76	111.15	107.53
2	C	401	A1M	O8-S1-C2	2.96	111.62	107.95
2	C	401	A1M	C3-C2-S1	3.16	123.26	119.77
2	A	401	A1M	C2-S1-N11	3.36	111.94	107.53
2	B	401	A1M	O10-S1-C2	3.43	112.19	107.95
2	B	401	A1M	O5-P1-O14	3.45	120.55	109.52
2	A	401	A1M	O8-S1-N11	3.55	112.77	107.03
2	D	401	A1M	O8-S1-C2	3.64	112.45	107.95
2	B	401	A1M	O8-S1-N11	3.76	113.11	107.03
2	D	401	A1M	O8-S1-N11	3.82	113.21	107.03
2	C	401	A1M	C2-S1-N11	3.97	112.74	107.53
2	B	401	A1M	C32-N-N35	5.09	110.19	104.93

Continued on next page...

Continued from previous page...

Mol	Chain	Res	Type	Atoms	Z	Observed(°)	Ideal(°)
2	C	401	A1M	C5-C32-N33	5.83	131.87	124.20
2	C	401	A1M	C32-N-N35	5.90	111.02	104.93
2	A	401	A1M	C5-C32-N33	5.93	132.00	124.20
2	B	401	A1M	C5-C32-N33	6.10	132.23	124.20
2	D	401	A1M	C32-N-N35	6.28	111.41	104.93
2	A	401	A1M	C32-N-N35	6.54	111.68	104.93
2	D	401	A1M	C5-C32-N33	8.25	135.06	124.20

There are no chirality outliers.

There are no torsion outliers.

There are no ring outliers.

1 monomer is involved in 1 short contact:

Mol	Chain	Res	Type	Clashes	Symm-Clashes
2	B	401	A1M	1	0

5.7 Other polymers [i](#)

There are no such residues in this entry.

5.8 Polymer linkage issues [i](#)

There are no chain breaks in this entry.

6 Fit of model and data [i](#)

6.1 Protein, DNA and RNA chains [i](#)

In the following table, the column labelled ‘#RSRZ> 2’ contains the number (and percentage) of RSRZ outliers, followed by percent RSRZ outliers for the chain as percentile scores relative to all X-ray entries and entries of similar resolution. The OWAB column contains the minimum, median, 95th percentile and maximum values of the occupancy-weighted average B-factor per residue. The column labelled ‘Q< 0.9’ lists the number of (and percentage) of residues with an average occupancy less than 0.9.

Mol	Chain	Analysed	<RSRZ>	#RSRZ>2		OWAB(Å ²)	Q<0.9
1	A	355/361 (98%)	-0.39	0	100 100	23, 37, 52, 70	0
1	B	359/361 (99%)	-0.47	0	100 100	23, 34, 50, 71	0
1	C	352/361 (97%)	-0.05	5 (1%)	75 77	32, 52, 71, 84	0
1	D	352/361 (97%)	-0.01	3 (0%)	84 85	26, 53, 75, 84	0
All	All	1418/1444 (98%)	-0.23	8 (0%)	89 90	23, 42, 69, 84	0

All (8) RSRZ outliers are listed below:

Mol	Chain	Res	Type	RSRZ
1	C	248	ILE	3.4
1	C	163	ALA	2.9
1	D	106	LEU	2.9
1	C	73	ALA	2.5
1	D	135	PHE	2.4
1	D	277	PRO	2.3
1	C	83	ILE	2.2
1	C	76	TYR	2.0

6.2 Non-standard residues in protein, DNA, RNA chains [i](#)

There are no non-standard protein/DNA/RNA residues in this entry.

6.3 Carbohydrates [i](#)

There are no carbohydrates in this entry.

6.4 Ligands [i](#)

In the following table, the Atoms column lists the number of modelled atoms in the group and the number defined in the chemical component dictionary. LLDF column lists the quality of electron density of the group with respect to its neighbouring residues in protein, DNA or RNA chains. The B-factors column lists the minimum, median, 95th percentile and maximum values of B factors of atoms in the group. The column labelled 'Q< 0.9' lists the number of atoms with occupancy less than 0.9.

Mol	Type	Chain	Res	Atoms	RSCC	RSR	LLDF	B-factors(\AA^2)	Q<0.9
2	A1M	C	401	23/23	0.95	0.11	0.22	45,55,60,62	0
2	A1M	B	401	23/23	0.95	0.10	0.19	34,47,53,58	0
2	A1M	D	401	23/23	0.95	0.11	-0.14	45,56,65,77	0
2	A1M	A	401	23/23	0.96	0.10	-0.23	40,51,55,63	0

6.5 Other polymers [i](#)

There are no such residues in this entry.