



Full wwPDB X-ray Structure Validation Report ⓘ

Feb 14, 2017 – 07:47 am GMT

PDB ID : 4WEF
Title : Structure of the Hemagglutinin-neuraminidase from Human parainfluenza virus type III: complex with difluorosialic acid
Authors : Streltsov, V.A.; Pilling, P.; Barrett, S.; McKimm-Breschkin, J.
Deposited on : 2014-09-10
Resolution : 2.50 Å(reported)

This is a Full wwPDB X-ray Structure Validation Report for a publicly released PDB entry.

We welcome your comments at validation@mail.wwpdb.org

A user guide is available at

<http://wwpdb.org/validation/2016/XrayValidationReportHelp>

with specific help available everywhere you see the ⓘ symbol.

The following versions of software and data (see [references ⓘ](#)) were used in the production of this report:

MolProbity	:	4.02b-467
Mogul	:	1.7.2 (RC1), CSD as538be (2017)
Xtriage (Phenix)	:	1.9-1692
EDS	:	trunk28620
Percentile statistics	:	20161228.v01 (using entries in the PDB archive December 28th 2016)
Refmac	:	5.8.0135
CCP4	:	6.5.0
Ideal geometry (proteins)	:	Engh & Huber (2001)
Ideal geometry (DNA, RNA)	:	Parkinson et al. (1996)
Validation Pipeline (wwPDB-VP)	:	recalc28949

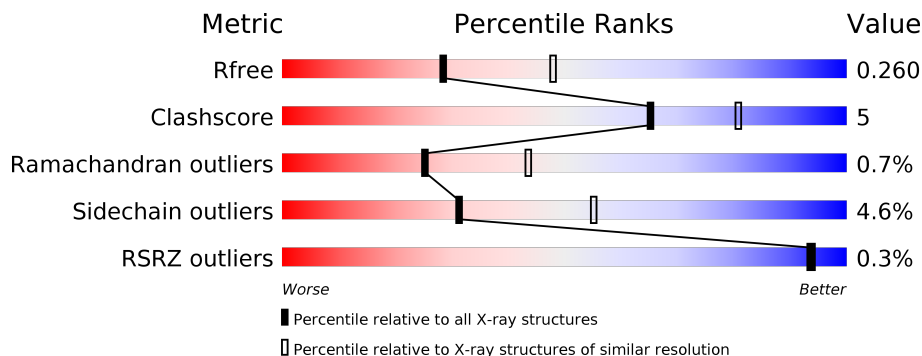
1 Overall quality at a glance

The following experimental techniques were used to determine the structure:

X-RAY DIFFRACTION



The reported resolution of this entry is 2.50 Å.

Percentile scores (ranging between 0-100) for global validation metrics of the entry are shown in the following graphic. The table shows the number of entries on which the scores are based.



Metric	Whole archive (#Entries)	Similar resolution (#Entries, resolution range(Å))
R_{free}	100719	3846 (2.50-2.50)
Clashscore	112137	4554 (2.50-2.50)
Ramachandran outliers	110173	4463 (2.50-2.50)
Sidechain outliers	110143	4465 (2.50-2.50)
RSRZ outliers	101464	3876 (2.50-2.50)

The table below summarises the geometric issues observed across the polymeric chains and their fit to the electron density. The red, orange, yellow and green segments on the lower bar indicate the fraction of residues that contain outliers for ≥ 3 , 2, 1 and 0 types of geometric quality criteria. A grey segment represents the fraction of residues that are not modelled. The numeric value for each fraction is indicated below the corresponding segment, with a dot representing fractions $\leq 5\%$. The upper red bar (where present) indicates the fraction of residues that have poor fit to the electron density. The numeric value is given above the bar.

Mol	Chain	Length	Quality of chain
1	A	431	 87% 12% •
1	B	431	 86% 14%

The following table lists non-polymeric compounds, carbohydrate monomers and non-standard residues in protein, DNA, RNA chains that are outliers for geometric or electron-density-fit criteria:

Mol	Type	Chain	Res	Chirality	Geometry	Clashes	Electron density
2	NAG	A	601	-	-	-	X
4	FUC	A	608	-	-	-	X
4	FUC	B	609	-	-	-	X
7	SFJ	A	612	-	-	-	X
7	SFJ	B	612	-	-	-	X

2 Entry composition [i](#)

There are 10 unique types of molecules in this entry. The entry contains 7765 atoms, of which 0 are hydrogens and 0 are deuteriums.

In the tables below, the ZeroOcc column contains the number of atoms modelled with zero occupancy, the AltConf column contains the number of residues with at least one atom in alternate conformation and the Trace column contains the number of residues modelled with at most 2 atoms.

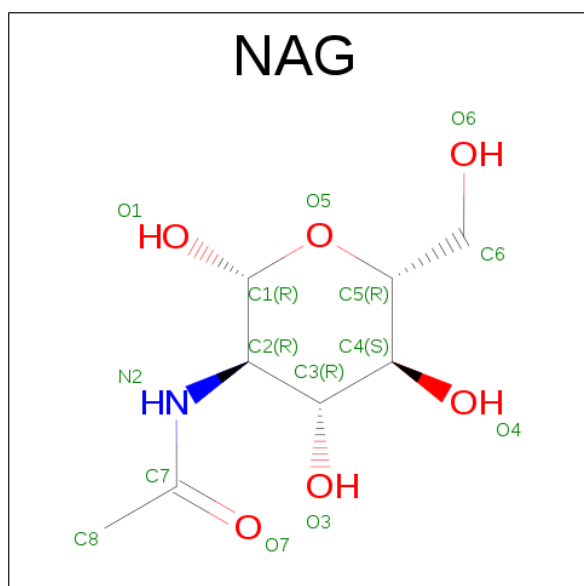
- Molecule 1 is a protein called Hemagglutinin-neuraminidase glycoprotein.

Mol	Chain	Residues	Atoms					ZeroOcc	AltConf	Trace
1	A	431	Total	C	N	O	S	0	1	0
			3378	2138	580	640	20			
1	B	431	Total	C	N	O	S	0	0	0
			3375	2137	579	639	20			

There are 2 discrepancies between the modelled and reference sequences:

Chain	Residue	Modelled	Actual	Comment	Reference
A	408	GLY	SER	engineered mutation	UNP Q6WJ03
B	408	GLY	SER	engineered mutation	UNP Q6WJ03

- Molecule 2 is N-ACETYL-D-GLUCOSAMINE (three-letter code: NAG) (formula: $C_8H_{15}NO_6$).



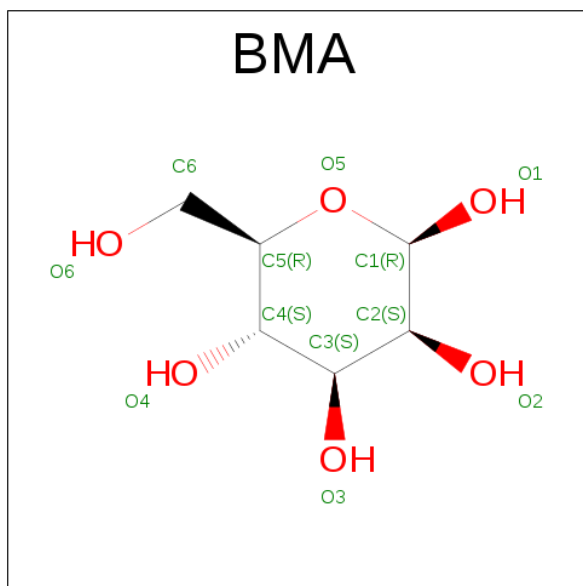
Mol	Chain	Residues	Atoms				ZeroOcc	AltConf
2	A	1	Total	C	N	O	0	0
			14	8	1	5		

Continued on next page...

Continued from previous page...

Mol	Chain	Residues	Atoms				ZeroOcc	AltConf
2	A	1	Total	C	N	O	0	0
			14	8	1	5		
2	A	1	Total	C	N	O	0	0
			14	8	1	5		
2	A	1	Total	C	N	O	0	0
			14	8	1	5		
2	A	1	Total	C	N	O	0	0
			14	8	1	5		
2	B	1	Total	C	N	O	0	0
			14	8	1	5		
2	B	1	Total	C	N	O	0	0
			14	8	1	5		
2	B	1	Total	C	N	O	0	0
			14	8	1	5		
2	B	1	Total	C	N	O	0	0
			14	8	1	5		

- Molecule 3 is BETA-D-MANNOSE (three-letter code: BMA) (formula: C₆H₁₂O₆).



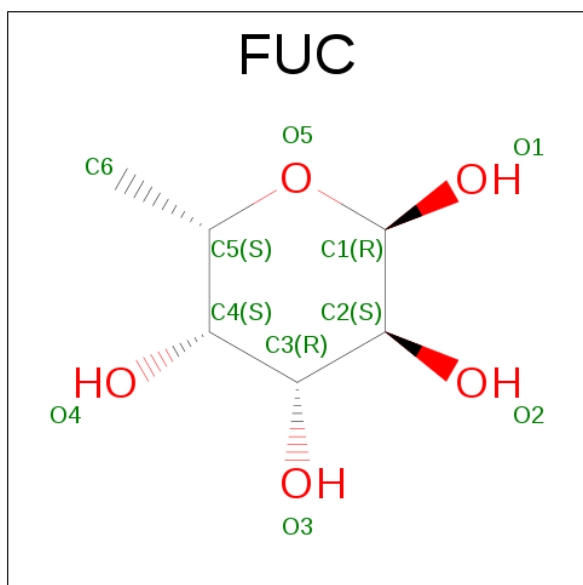
Mol	Chain	Residues	Atoms			ZeroOcc	AltConf
3	A	1	Total	C	O	0	0
			11	6	5		
3	A	1	Total	C	O	0	0
			11	6	5		

Continued on next page...

Continued from previous page...

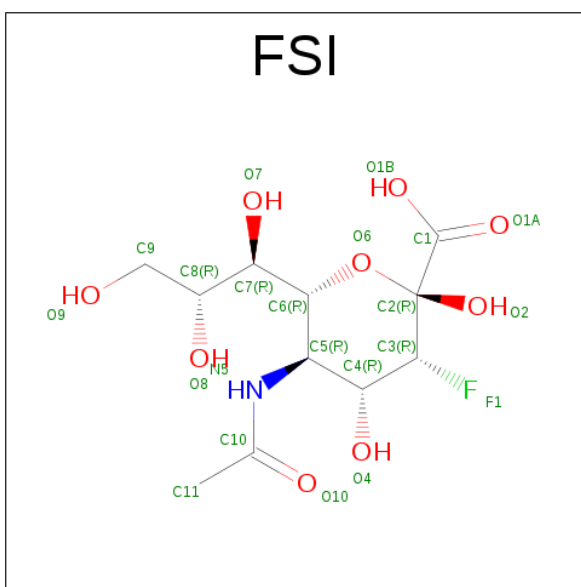
Mol	Chain	Residues	Atoms			ZeroOcc	AltConf
3	B	1	Total	C	O	0	0
			11	6	5		
3	B	1	Total	C	O	0	0
			11	6	5		

- Molecule 4 is ALPHA-L-FUCOSE (three-letter code: FUC) (formula: C₆H₁₂O₅).



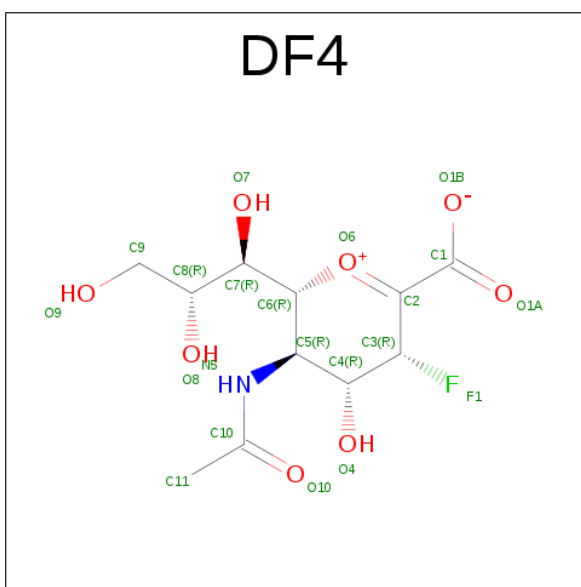
Mol	Chain	Residues	Atoms			ZeroOcc	AltConf
4	A	1	Total	C	O	0	0
			10	6	4		
4	B	1	Total	C	O	0	0
			10	6	4		

- Molecule 5 is 5-(acetylamino)-3,5-dideoxy-3-fluoro-D-erythro-alpha-L-manno-non-2-ulopyranosonic acid (three-letter code: FSI) (formula: C₁₁H₁₈FNO₉).



Mol	Chain	Residues	Atoms					ZeroOcc	AltConf
5	A	1	Total	C	F	N	O	0	1
			21	11	1	1	8		
5	B	1	Total	C	F	N	O	0	1
			21	11	1	1	8		

- Molecule 6 is (3R,4R,5R,6R)-5-(acetamino)-3-fluoro-4-hydroxy-6-[(1R,2R)-1,2,3-trihydroxypropyl]-3,4,5,6-tetrahydropyranium-2-carboxylate (three-letter code: DF4) (formula: $C_{11}H_{16}FNO_8$).



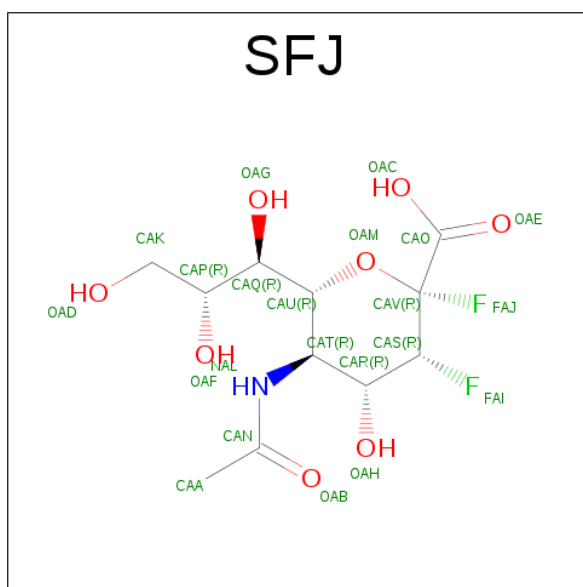
Mol	Chain	Residues	Atoms					ZeroOcc	AltConf
6	A	1	Total	C	F	N	O	0	1
			21	11	1	1	8		

Continued on next page...

Continued from previous page...

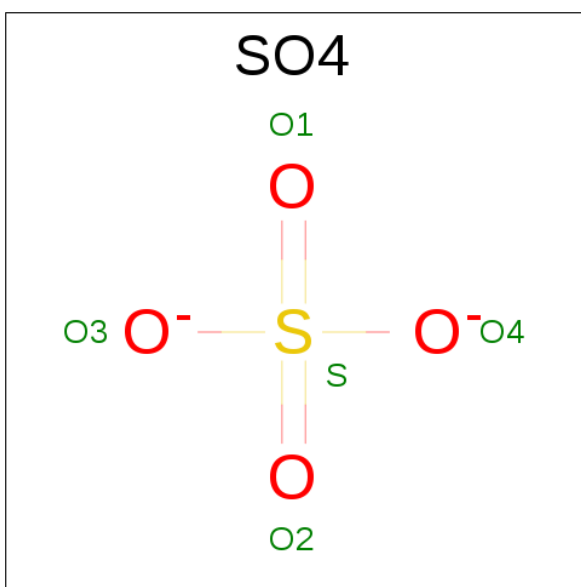
Mol	Chain	Residues	Atoms					ZeroOcc	AltConf
6	B	1	Total	C	F	N	O	0	1
			21	11	1	1	8		

- Molecule 7 is (2R,3R,4R,5R,6R)-5-(acetylamino)-2,3-difluoro-4-hydroxy-6-[(1R,2R)-1,2,3-trihydroxypropyl]tetrahydro-2H-pyran-2-carboxylic acid (three-letter code: SFJ) (formula: $C_{11}H_{17}F_2NO_8$).



Mol	Chain	Residues	Atoms					ZeroOcc	AltConf
7	A	1	Total	C	F	N	O	0	0
			22	11	2	1	8		
7	A	1	Total	C	F	N	O	0	0
			22	11	2	1	8		
7	B	1	Total	C	F	N	O	0	0
			22	11	2	1	8		

- Molecule 8 is SULFATE ION (three-letter code: SO4) (formula: O_4S).



Mol	Chain	Residues	Atoms			ZeroOcc	AltConf
8	A	1	Total	O	S	0	0
			5	4	1		
8	A	1	Total	O	S	0	0
			5	4	1		
8	A	1	Total	O	S	0	0
			5	4	1		
8	A	1	Total	O	S	0	0
			5	4	1		
8	A	1	Total	O	S	0	0
			5	4	1		
8	B	1	Total	O	S	0	0
			5	4	1		
8	B	1	Total	O	S	0	0
			5	4	1		
8	B	1	Total	O	S	0	0
			5	4	1		
8	B	1	Total	O	S	0	0
			5	4	1		
8	B	1	Total	O	S	0	0
			5	4	1		

- Molecule 9 is CALCIUM ION (three-letter code: CA) (formula: Ca).

Mol	Chain	Residues	Atoms		ZeroOcc	AltConf
9	B	1	Total 1	Ca 1	0	0
9	A	1	Total 1	Ca 1	0	0

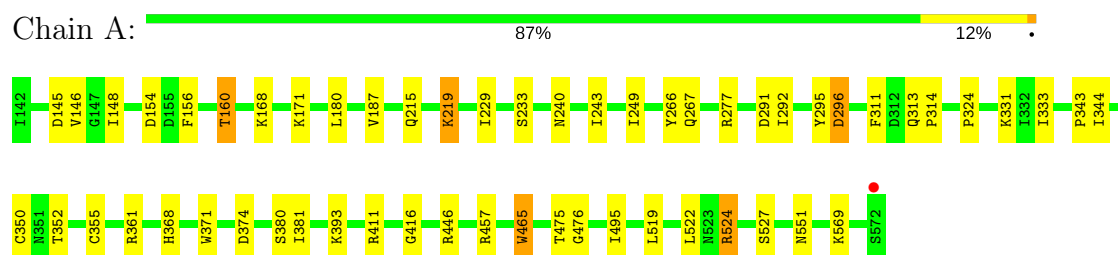
- Molecule 10 is water.

Mol	Chain	Residues	Atoms		ZeroOcc	AltConf
10	A	293	Total 293	O 293	0	0
10	B	298	Total 298	O 298	0	0

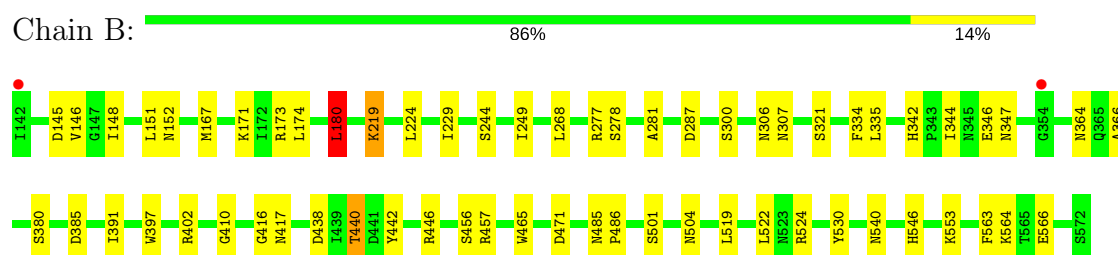
3 Residue-property plots [i](#)

These plots are drawn for all protein, RNA and DNA chains in the entry. The first graphic for a chain summarises the proportions of the various outlier classes displayed in the second graphic. The second graphic shows the sequence view annotated by issues in geometry and electron density. Residues are color-coded according to the number of geometric quality criteria for which they contain at least one outlier: green = 0, yellow = 1, orange = 2 and red = 3 or more. A red dot above a residue indicates a poor fit to the electron density ($RSRZ > 2$). Stretches of 2 or more consecutive residues without any outlier are shown as a green connector. Residues present in the sample, but not in the model, are shown in grey.

- Molecule 1: Hemagglutinin-neuraminidase glycoprotein



- Molecule 1: Hemagglutinin-neuraminidase glycoprotein



4 Data and refinement statistics

Property	Value	Source
Space group	P 62 2 2	Depositor
Cell constants a, b, c, α , β , γ	218.67Å 218.67Å 109.77Å 90.00° 90.00° 120.00°	Depositor
Resolution (Å)	77.46 – 2.50 77.46 – 2.50	Depositor EDS
% Data completeness (in resolution range)	99.9 (77.46-2.50) 99.9 (77.46-2.50)	Depositor EDS
R_{merge}	0.29	Depositor
R_{sym}	(Not available)	Depositor
$\langle I/\sigma(I) \rangle$ ¹	1.53 (at 2.51Å)	Xtriage
Refinement program	REFMAC 5.7.0029	Depositor
R, R_{free}	0.189 , 0.258 0.196 , 0.260	Depositor DCC
R_{free} test set	2666 reflections (5.24%)	DCC
Wilson B-factor (Å ²)	33.4	Xtriage
Anisotropy	0.042	Xtriage
Bulk solvent k_{sol} (e/Å ³), B_{sol} (Å ²)	0.37 , 52.2	EDS
L-test for twinning ²	$\langle L \rangle = 0.50$, $\langle L^2 \rangle = 0.33$	Xtriage
Estimated twinning fraction	No twinning to report.	Xtriage
F_o, F_c correlation	0.94	EDS
Total number of atoms	7765	wwPDB-VP
Average B, all atoms (Å ²)	36.0	wwPDB-VP

Xtriage's analysis on translational NCS is as follows: *The largest off-origin peak in the Patterson function is 1.99% of the height of the origin peak. No significant pseudotranslation is detected.*

¹Intensities estimated from amplitudes.

²Theoretical values of $\langle |L| \rangle$, $\langle L^2 \rangle$ for acentric reflections are 0.5, 0.333 respectively for untwinned datasets, and 0.375, 0.2 for perfectly twinned datasets.

5 Model quality

5.1 Standard geometry

Bond lengths and bond angles in the following residue types are not validated in this section: BMA, NAG, FSI, CA, SFJ, FUC, DF4, SO4

The Z score for a bond length (or angle) is the number of standard deviations the observed value is removed from the expected value. A bond length (or angle) with $|Z| > 5$ is considered an outlier worth inspection. RMSZ is the root-mean-square of all Z scores of the bond lengths (or angles).

Mol	Chain	Bond lengths		Bond angles	
		RMSZ	$\# Z > 5$	RMSZ	$\# Z > 5$
1	A	0.73	1/3464 (0.0%)	0.84	1/4723 (0.0%)
1	B	0.69	0/3456	0.84	1/4712 (0.0%)
All	All	0.71	1/6920 (0.0%)	0.84	2/9435 (0.0%)

All (1) bond length outliers are listed below:

Mol	Chain	Res	Type	Atoms	Z	Observed(Å)	Ideal(Å)
1	A	465	TRP	CB-CG	-5.07	1.41	1.50

All (2) bond angle outliers are listed below:

Mol	Chain	Res	Type	Atoms	Z	Observed(°)	Ideal(°)
1	A	361	ARG	NE-CZ-NH1	5.86	123.23	120.30
1	B	180	LEU	CB-CG-CD2	5.29	120.00	111.00

There are no chirality outliers.

There are no planarity outliers.

5.2 Too-close contacts

In the following table, the Non-H and H(model) columns list the number of non-hydrogen atoms and hydrogen atoms in the chain respectively. The H(added) column lists the number of hydrogen atoms added and optimized by MolProbity. The Clashes column lists the number of clashes within the asymmetric unit, whereas Symm-Clashes lists symmetry related clashes.

Mol	Chain	Non-H	H(model)	H(added)	Clashes	Symm-Clashes
1	A	3378	0	3344	24	0
1	B	3375	0	3342	36	0
2	A	70	0	61	2	0

Continued on next page...

Continued from previous page...

Mol	Chain	Non-H	H(model)	H(added)	Clashes	Symm-Clashes
2	B	70	0	61	3	0
3	A	22	0	19	0	0
3	B	22	0	19	0	0
4	A	10	0	10	0	0
4	B	10	0	10	1	0
5	A	21	0	16	0	0
5	B	21	0	16	0	0
6	A	21	0	16	1	0
6	B	21	0	16	1	0
7	A	44	0	32	2	0
7	B	22	0	16	4	0
8	A	30	0	0	0	0
8	B	35	0	0	1	0
9	A	1	0	0	0	0
9	B	1	0	0	0	0
10	A	293	0	0	3	0
10	B	298	0	0	15	0
All	All	7765	0	6978	66	0

The all-atom clashscore is defined as the number of clashes found per 1000 atoms (including hydrogen atoms). The all-atom clashscore for this structure is 5.

All (66) close contacts within the same asymmetric unit are listed below, sorted by their clash magnitude.

Atom-1	Atom-2	Interatomic distance (Å)	Clash overlap (Å)
1:B:540:ASN:HB2	10:B:843:HOH:O	1.85	0.77
1:B:416:GLY:HA3	10:B:716:HOH:O	1.92	0.69
1:B:277:ARG:HD2	10:B:703:HOH:O	1.94	0.68
1:B:530:TYR:OH	6:B:611[B]:DF4:C2	2.45	0.64
1:B:540:ASN:CB	10:B:843:HOH:O	2.41	0.64
1:A:219:LYS:HB2	1:A:249:ILE:HG12	1.81	0.62
1:B:471:ASP:HA	7:B:612:SFJ:H7	1.82	0.62
2:B:607:NAG:H62	4:B:609:FUC:O2	2.01	0.60
1:A:296:ASP:C	1:A:296:ASP:OD1	2.41	0.58
1:B:342:HIS:HD2	10:B:747:HOH:O	1.86	0.58
1:A:311:PHE:HB3	1:A:313:GLN:O	2.05	0.57
1:B:366:ALA:HB2	7:B:612:SFJ:OAC	2.04	0.57
1:A:156:PHE:O	1:A:569:LYS:NZ	2.35	0.56
1:B:346:GLU:O	1:B:364:ASN:ND2	2.39	0.56
1:A:313:GLN:HB2	1:A:314:PRO:HD2	1.89	0.55
1:B:347:ASN:HA	1:B:364:ASN:HD21	1.72	0.54

Continued on next page...

Continued from previous page...

Atom-1	Atom-2	Interatomic distance (Å)	Clash overlap (Å)
2:B:604:NAG:H83	10:B:929:HOH:O	2.06	0.53
1:B:524:ARG:NH2	8:B:618:SO4:O2	2.39	0.53
1:B:148:ILE:HD13	1:B:229:ILE:HG22	1.90	0.53
2:A:601:NAG:H82	10:A:812:HOH:O	2.10	0.52
7:A:612:SFJ:H6	7:A:612:SFJ:OAB	2.08	0.52
1:A:527:SER:HB2	1:A:551:ASN:HB3	1.92	0.51
6:A:610[B]:DF4:H2	10:A:717:HOH:O	2.10	0.51
1:A:180:LEU:HD23	1:B:180:LEU:HD13	1.91	0.51
1:B:397:TRP:CD2	1:B:442:TYR:HB3	2.46	0.51
1:A:465:TRP:CD1	1:A:465:TRP:C	2.86	0.49
1:B:145:ASP:HB2	1:B:148:ILE:HD12	1.95	0.48
1:A:333:ILE:CG2	1:A:381:ILE:HG23	2.43	0.47
1:A:215:GLN:HE21	7:A:612:SFJ:H8	1.79	0.47
1:B:219:LYS:HB2	1:B:249:ILE:HG12	1.97	0.47
1:B:485:ASN:HB2	1:B:486:PRO:HD2	1.97	0.46
1:B:268:LEU:HD22	1:B:334:PHE:CD1	2.51	0.46
1:B:456:SER:HB3	1:B:465:TRP:CD2	2.51	0.46
1:A:352:THR:O	1:A:355:CYS:HB2	2.16	0.46
1:B:438:ASP:OD1	1:B:440:THR:OG1	2.29	0.46
1:A:475:THR:HG23	1:A:476:GLY:N	2.32	0.45
1:B:173:ARG:HD3	10:B:727:HOH:O	2.15	0.45
1:B:277:ARG:NH1	10:B:703:HOH:O	2.32	0.45
1:B:471:ASP:HA	7:B:612:SFJ:H8	1.99	0.45
1:B:402:ARG:NH1	10:B:720:HOH:O	2.50	0.44
1:A:266:TYR:CE2	1:A:292:ILE:HD13	2.52	0.44
1:A:145:ASP:HB2	1:A:148:ILE:HD12	1.99	0.43
1:A:368:HIS:ND1	1:A:374:ASP:OD1	2.34	0.43
1:B:151:LEU:HD23	1:B:151:LEU:C	2.38	0.43
1:A:148:ILE:HD13	1:A:229:ILE:HG22	2.00	0.43
1:A:277:ARG:HD2	1:A:371:TRP:CE2	2.54	0.43
1:B:278:SER:O	1:B:281:ALA:HB3	2.20	0.42
1:B:504:ASN:HB2	1:B:524:ARG:HA	2.00	0.42
1:B:174:LEU:HG	1:B:519:LEU:HD21	2.02	0.42
1:B:446:ARG:NH1	10:B:725:HOH:O	2.52	0.42
2:B:607:NAG:H82	10:B:774:HOH:O	2.17	0.42
1:B:173:ARG:NE	10:B:727:HOH:O	2.52	0.42
1:B:321:SER:OG	1:B:335:LEU:HB3	2.19	0.42
1:B:321:SER:HB2	1:B:410:GLY:H	1.83	0.42
1:B:224:LEU:O	1:B:244:SER:HA	2.19	0.42
1:A:243:ILE:HG13	10:B:840:HOH:O	2.19	0.41
1:A:524:ARG:HE	1:A:524:ARG:H	1.67	0.41

Continued on next page...

Continued from previous page...

Atom-1	Atom-2	Interatomic distance (Å)	Clash overlap (Å)
1:A:522:LEU:HD21	2:A:606:NAG:H62	2.02	0.41
1:A:267:GLN:HB3	1:A:291:ASP:HB2	2.03	0.41
1:A:343:PRO:O	1:A:344:ILE:C	2.57	0.41
1:A:324:PRO:HD2	1:A:411:ARG:CD	2.50	0.41
1:B:152:ASN:OD1	1:B:152:ASN:C	2.59	0.41
1:B:446:ARG:NH1	10:B:715:HOH:O	2.47	0.41
1:A:146:VAL:N	10:A:704:HOH:O	2.32	0.41
1:B:546:HIS:HB2	1:B:563:PHE:HB2	2.03	0.40
7:B:612:SFJ:CAK	10:B:701:HOH:O	2.67	0.40

There are no symmetry-related clashes.

5.3 Torsion angles

5.3.1 Protein backbone

In the following table, the Percentiles column shows the percent Ramachandran outliers of the chain as a percentile score with respect to all X-ray entries followed by that with respect to entries of similar resolution.

The Analysed column shows the number of residues for which the backbone conformation was analysed, and the total number of residues.

Mol	Chain	Analysed	Favoured	Allowed	Outliers	Percentiles	
1	A	430/431 (100%)	401 (93%)	25 (6%)	4 (1%)	20	36
1	B	429/431 (100%)	399 (93%)	28 (6%)	2 (0%)	32	53
All	All	859/862 (100%)	800 (93%)	53 (6%)	6 (1%)	25	43

All (6) Ramachandran outliers are listed below:

Mol	Chain	Res	Type
1	A	233	SER
1	A	160	THR
1	A	416	GLY
1	B	287	ASP
1	A	350	CYS
1	B	522	LEU

5.3.2 Protein sidechains ⓘ

In the following table, the Percentiles column shows the percent sidechain outliers of the chain as a percentile score with respect to all X-ray entries followed by that with respect to entries of similar resolution.

The Analysed column shows the number of residues for which the sidechain conformation was analysed, and the total number of residues.

Mol	Chain	Analysed	Rotameric	Outliers	Percentiles	
1	A	390/389 (100%)	373 (96%)	17 (4%)	33	57
1	B	389/389 (100%)	370 (95%)	19 (5%)	29	52
All	All	779/778 (100%)	743 (95%)	36 (5%)	31	55

All (36) residues with a non-rotameric sidechain are listed below:

Mol	Chain	Res	Type
1	A	154	ASP
1	A	160	THR
1	A	168	LYS
1	A	171	LYS
1	A	187	VAL
1	A	219	LYS
1	A	240	ASN
1	A	295	TYR
1	A	296	ASP
1	A	331	LYS
1	A	380	SER
1	A	393	LYS
1	A	446	ARG
1	A	457	ARG
1	A	495	ILE
1	A	519	LEU
1	A	524	ARG
1	B	146	VAL
1	B	167	MET
1	B	171	LYS
1	B	180	LEU
1	B	219	LYS
1	B	300	SER
1	B	306	ASN
1	B	307	ASN
1	B	344	ILE
1	B	380	SER

Continued on next page...

Continued from previous page...

Mol	Chain	Res	Type
1	B	385	ASP
1	B	391	ILE
1	B	417	ASN
1	B	440	THR
1	B	457	ARG
1	B	501	SER
1	B	553	LYS
1	B	564	LYS
1	B	566	GLU

Some sidechains can be flipped to improve hydrogen bonding and reduce clashes. All (15) such sidechains are listed below:

Mol	Chain	Res	Type
1	A	215	GLN
1	A	240	ASN
1	A	245	HIS
1	A	250	ASN
1	A	262	ASN
1	A	347	ASN
1	B	262	ASN
1	B	294	ASN
1	B	345	ASN
1	B	360	GLN
1	B	364	ASN
1	B	417	ASN
1	B	504	ASN
1	B	551	ASN
1	B	556	ASN

5.3.3 RNA ⓘ

There are no RNA molecules in this entry.

5.4 Non-standard residues in protein, DNA, RNA chains ⓘ

8 non-standard protein/DNA/RNA residues are modelled in this entry.

In the following table, the Counts columns list the number of bonds (or angles) for which Mogul statistics could be retrieved, the number of bonds (or angles) that are observed in the model and the number of bonds (or angles) that are defined in the chemical component dictionary. The Link column lists molecule types, if any, to which the group is linked. The Z score for a bond length

(or angle) is the number of standard deviations the observed value is removed from the expected value. A bond length (or angle) with $|Z| > 2$ is considered an outlier worth inspection. RMSZ is the root-mean-square of all Z scores of the bond lengths (or angles).

Mol	Type	Chain	Res	Link	Bond lengths			Bond angles		
					Counts	RMSZ	# $ Z > 2$	Counts	RMSZ	# $ Z > 2$
2	NAG	A	601	1	14,14,15	0.52	0	15,19,21	1.84	2 (13%)
2	NAG	A	602	1,2	14,14,15	0.88	0	15,19,21	1.84	3 (20%)
2	NAG	A	603	3,2	14,14,15	0.50	0	15,19,21	1.85	4 (26%)
2	NAG	A	606	1,2,4	14,14,15	0.98	1 (7%)	15,19,21	1.41	2 (13%)
2	NAG	A	607	2	14,14,15	0.57	0	15,19,21	1.62	3 (20%)
2	NAG	B	603	1,2	14,14,15	0.61	0	15,19,21	2.03	4 (26%)
2	NAG	B	604	3,2	14,14,15	0.40	0	15,19,21	1.40	4 (26%)
2	NAG	B	608	2	14,14,15	0.88	1 (7%)	15,19,21	2.50	4 (26%)

In the following table, the Chirals column lists the number of chiral outliers, the number of chiral centers analysed, the number of these observed in the model and the number defined in the chemical component dictionary. Similar counts are reported in the Torsion and Rings columns. '-' means no outliers of that kind were identified.

Mol	Type	Chain	Res	Link	Chirals	Torsions	Rings
2	NAG	A	601	1	-	0/6/23/26	0/1/1/1
2	NAG	A	602	1,2	-	0/6/23/26	0/1/1/1
2	NAG	A	603	3,2	-	0/6/23/26	0/1/1/1
2	NAG	A	606	1,2,4	-	0/6/23/26	0/1/1/1
2	NAG	A	607	2	-	0/6/23/26	0/1/1/1
2	NAG	B	603	1,2	-	0/6/23/26	0/1/1/1
2	NAG	B	604	3,2	-	0/6/23/26	0/1/1/1
2	NAG	B	608	2	-	0/6/23/26	0/1/1/1

All (2) bond length outliers are listed below:

Mol	Chain	Res	Type	Atoms	Z	Observed(Å)	Ideal(Å)
2	A	606	NAG	O5-C1	-2.05	1.40	1.43
2	B	608	NAG	C1-C2	2.51	1.55	1.52

All (26) bond angle outliers are listed below:

Mol	Chain	Res	Type	Atoms	Z	Observed(°)	Ideal(°)
2	B	603	NAG	O5-C1-C2	-3.96	105.96	111.47
2	B	608	NAG	O7-C7-C8	-3.49	115.71	122.06
2	A	607	NAG	O7-C7-C8	-3.00	116.60	122.06

Continued on next page...

Continued from previous page...

Mol	Chain	Res	Type	Atoms	Z	Observed(°)	Ideal(°)
2	A	607	NAG	O5-C1-C2	-2.84	107.52	111.47
2	A	606	NAG	O4-C4-C3	-2.73	104.42	110.36
2	B	608	NAG	C6-C5-C4	-2.49	107.17	113.00
2	B	603	NAG	O4-C4-C3	-2.22	105.52	110.36
2	B	604	NAG	C6-C5-C4	-2.13	108.03	113.00
2	B	604	NAG	O3-C3-C4	2.05	114.82	110.36
2	B	604	NAG	O4-C4-C3	2.17	115.08	110.36
2	A	606	NAG	O3-C3-C2	2.39	114.51	109.39
2	A	607	NAG	C1-C2-N2	2.63	114.99	110.49
2	B	603	NAG	C3-C4-C5	2.68	114.94	110.22
2	A	601	NAG	C1-C2-N2	2.73	115.15	110.49
2	A	603	NAG	C2-N2-C7	2.74	126.93	122.94
2	A	603	NAG	C3-C4-C5	2.82	115.18	110.22
2	A	602	NAG	C8-C7-N2	2.94	121.42	116.11
2	B	604	NAG	C1-O5-C5	3.06	116.38	112.17
2	A	603	NAG	C8-C7-N2	3.27	122.02	116.11
2	A	602	NAG	C4-C3-C2	3.49	116.13	111.02
2	A	603	NAG	C1-O5-C5	3.59	117.11	112.17
2	A	602	NAG	C2-N2-C7	4.29	129.20	122.94
2	B	608	NAG	C1-C2-N2	5.00	119.03	110.49
2	B	603	NAG	C1-O5-C5	5.10	119.20	112.17
2	A	601	NAG	C1-O5-C5	5.55	119.81	112.17
2	B	608	NAG	C1-O5-C5	5.91	120.31	112.17

There are no chirality outliers.

There are no torsion outliers.

There are no ring outliers.

3 monomers are involved in 3 short contacts:

Mol	Chain	Res	Type	Clashes	Symm-Clashes
2	A	601	NAG	1	0
2	A	606	NAG	1	0
2	B	604	NAG	1	0

5.5 Carbohydrates

There are no carbohydrates in this entry.

5.6 Ligand geometry

Of 38 ligands modelled in this entry, 2 are monoatomic - leaving 36 for Mogul analysis.

In the following table, the Counts columns list the number of bonds (or angles) for which Mogul statistics could be retrieved, the number of bonds (or angles) that are observed in the model and the number of bonds (or angles) that are defined in the chemical component dictionary. The Link column lists molecule types, if any, to which the group is linked. The Z score for a bond length (or angle) is the number of standard deviations the observed value is removed from the expected value. A bond length (or angle) with $|Z| > 2$ is considered an outlier worth inspection. RMSZ is the root-mean-square of all Z scores of the bond lengths (or angles).

Mol	Type	Chain	Res	Link	Bond lengths			Bond angles		
					Counts	RMSZ	$\# Z > 2$	Counts	RMSZ	$\# Z > 2$
2	NAG	A	601	1	14,14,15	0.52	0	15,19,21	1.84	2 (13%)
2	NAG	A	602	1,2	14,14,15	0.88	0	15,19,21	1.84	3 (20%)
2	NAG	A	603	3,2	14,14,15	0.50	0	15,19,21	1.85	4 (26%)
3	BMA	A	604	3,2	11,11,12	0.57	0	13,15,17	1.36	2 (15%)
3	BMA	A	605	3	11,11,12	0.80	0	13,15,17	1.54	3 (23%)
2	NAG	A	606	1,2,4	14,14,15	0.98	1 (7%)	15,19,21	1.41	2 (13%)
2	NAG	A	607	2	14,14,15	0.57	0	15,19,21	1.62	3 (20%)
4	FUC	A	608	2	9,10,11	0.70	0	13,14,16	2.64	5 (38%)
5	FSI	A	609[A]	1	18,21,22	0.63	0	20,30,33	1.66	4 (20%)
6	DF4	A	610[B]	-	15,21,21	0.34	0	18,30,30	1.11	1 (5%)
7	SFJ	A	611	-	16,22,22	0.90	1 (6%)	19,33,33	1.57	5 (26%)
7	SFJ	A	612	-	16,22,22	0.96	1 (6%)	19,33,33	2.33	6 (31%)
8	SO4	A	613	-	4,4,4	0.50	0	6,6,6	0.21	0
8	SO4	A	614	-	4,4,4	0.65	0	6,6,6	0.69	0
8	SO4	A	615	-	4,4,4	0.56	0	6,6,6	0.55	0
8	SO4	A	616	-	4,4,4	0.47	0	6,6,6	0.88	0
8	SO4	A	617	-	4,4,4	0.43	0	6,6,6	0.20	0
8	SO4	A	618	-	4,4,4	0.50	0	6,6,6	0.33	0
8	SO4	B	601	-	4,4,4	0.45	0	6,6,6	0.22	0
2	NAG	B	602	1	14,14,15	0.48	0	15,19,21	1.51	3 (20%)
2	NAG	B	603	1,2	14,14,15	0.61	0	15,19,21	2.03	4 (26%)
2	NAG	B	604	3,2	14,14,15	0.40	0	15,19,21	1.40	4 (26%)
3	BMA	B	605	3,2	11,11,12	0.69	0	13,15,17	1.05	1 (7%)
3	BMA	B	606	3	11,11,12	0.89	1 (9%)	13,15,17	2.76	6 (46%)
2	NAG	B	607	1,2,4	14,14,15	1.07	1 (7%)	15,19,21	2.10	3 (20%)
2	NAG	B	608	2	14,14,15	0.88	1 (7%)	15,19,21	2.50	4 (26%)
4	FUC	B	609	2	9,10,11	1.13	1 (11%)	13,14,16	2.44	5 (38%)

Mol	Type	Chain	Res	Link	Bond lengths			Bond angles		
					Counts	RMSZ	# Z > 2	Counts	RMSZ	# Z > 2
5	FSI	B	610[A]	1	18,21,22	0.92	1 (5%)	20,30,33	1.20	3 (15%)
6	DF4	B	611[B]	-	15,21,21	0.38	0	18,30,30	0.92	0
7	SFJ	B	612	-	16,22,22	1.74	2 (12%)	19,33,33	3.36	5 (26%)
8	SO4	B	613	-	4,4,4	0.54	0	6,6,6	0.29	0
8	SO4	B	614	-	4,4,4	0.46	0	6,6,6	0.37	0
8	SO4	B	615	-	4,4,4	0.52	0	6,6,6	0.36	0
8	SO4	B	616	-	4,4,4	0.58	0	6,6,6	0.24	0
8	SO4	B	617	-	4,4,4	0.50	0	6,6,6	0.20	0
8	SO4	B	618	-	4,4,4	0.39	0	6,6,6	0.30	0

In the following table, the Chirals column lists the number of chiral outliers, the number of chiral centers analysed, the number of these observed in the model and the number defined in the chemical component dictionary. Similar counts are reported in the Torsion and Rings columns. '-' means no outliers of that kind were identified.

Mol	Type	Chain	Res	Link	Chirals	Torsions	Rings
2	NAG	A	601	1	-	0/6/23/26	0/1/1/1
2	NAG	A	602	1,2	-	0/6/23/26	0/1/1/1
2	NAG	A	603	3,2	-	0/6/23/26	0/1/1/1
3	BMA	A	604	3,2	-	0/2/19/22	0/1/1/1
3	BMA	A	605	3	-	0/2/19/22	0/1/1/1
2	NAG	A	606	1,2,4	-	0/6/23/26	0/1/1/1
2	NAG	A	607	2	-	0/6/23/26	0/1/1/1
4	FUC	A	608	2	-	0/0/17/20	0/1/1/1
5	FSI	A	609[A]	1	-	0/14/38/43	0/1/1/1
6	DF4	A	610[B]	-	-	0/14/38/38	0/0/1/1
7	SFJ	A	611	-	-	0/14/43/43	0/1/1/1
7	SFJ	A	612	-	-	0/14/43/43	0/1/1/1
8	SO4	A	613	-	-	0/0/0/0	0/0/0/0
8	SO4	A	614	-	-	0/0/0/0	0/0/0/0
8	SO4	A	615	-	-	0/0/0/0	0/0/0/0
8	SO4	A	616	-	-	0/0/0/0	0/0/0/0
8	SO4	A	617	-	-	0/0/0/0	0/0/0/0
8	SO4	A	618	-	-	0/0/0/0	0/0/0/0
8	SO4	B	601	-	-	0/0/0/0	0/0/0/0
2	NAG	B	602	1	-	0/6/23/26	0/1/1/1
2	NAG	B	603	1,2	-	0/6/23/26	0/1/1/1
2	NAG	B	604	3,2	-	0/6/23/26	0/1/1/1
3	BMA	B	605	3,2	-	0/2/19/22	0/1/1/1
3	BMA	B	606	3	-	0/2/19/22	0/1/1/1
2	NAG	B	607	1,2,4	-	0/6/23/26	0/1/1/1
2	NAG	B	608	2	-	0/6/23/26	0/1/1/1

Continued on next page...

Continued from previous page...

Mol	Type	Chain	Res	Link	Chirals	Torsions	Rings
4	FUC	B	609	2	-	0/0/17/20	0/1/1/1
5	FSI	B	610[A]	1	-	0/14/38/43	0/1/1/1
6	DF4	B	611[B]	-	-	0/14/38/38	0/0/1/1
7	SFJ	B	612	-	-	0/14/43/43	0/1/1/1
8	SO4	B	613	-	-	0/0/0/0	0/0/0/0
8	SO4	B	614	-	-	0/0/0/0	0/0/0/0
8	SO4	B	615	-	-	0/0/0/0	0/0/0/0
8	SO4	B	616	-	-	0/0/0/0	0/0/0/0
8	SO4	B	617	-	-	0/0/0/0	0/0/0/0
8	SO4	B	618	-	-	0/0/0/0	0/0/0/0

All (10) bond length outliers are listed below:

Mol	Chain	Res	Type	Atoms	Z	Observed(Å)	Ideal(Å)
2	B	607	NAG	O5-C1	-3.29	1.38	1.43
5	B	610[A]	FSI	O6-C2	-2.14	1.41	1.44
2	A	606	NAG	O5-C1	-2.05	1.40	1.43
3	B	606	BMA	C2-C3	2.16	1.55	1.52
7	A	611	SFJ	CAQ-CAU	2.50	1.56	1.52
2	B	608	NAG	C1-C2	2.51	1.55	1.52
7	A	612	SFJ	CAS-CAR	2.61	1.54	1.52
4	B	609	FUC	C1-C2	2.73	1.58	1.52
7	B	612	SFJ	CAS-CAR	3.93	1.56	1.52
7	B	612	SFJ	CAQ-CAU	4.78	1.59	1.52

All (78) bond angle outliers are listed below:

Mol	Chain	Res	Type	Atoms	Z	Observed(°)	Ideal(°)
2	B	607	NAG	O5-C1-C2	-6.28	102.73	111.47
3	B	606	BMA	C3-C4-C5	-4.27	102.70	110.22
7	A	612	SFJ	OAM-CAU-CAQ	-4.16	101.36	107.41
2	B	603	NAG	O5-C1-C2	-3.96	105.96	111.47
2	B	608	NAG	O7-C7-C8	-3.49	115.71	122.06
5	A	609[A]	FSI	F1-C3-C2	-3.45	103.38	108.00
2	B	607	NAG	C2-N2-C7	-3.42	117.95	122.94
7	B	612	SFJ	CAR-CAT-NAL	-3.03	104.80	110.61
2	B	607	NAG	O4-C4-C3	-3.00	103.83	110.36
2	A	607	NAG	O7-C7-C8	-3.00	116.60	122.06
2	A	607	NAG	O5-C1-C2	-2.84	107.52	111.47
6	A	610[B]	DF4	C8-C7-C6	-2.81	107.57	113.04
7	A	612	SFJ	CAP-CAQ-CAU	-2.80	107.59	113.04
2	A	606	NAG	O4-C4-C3	-2.73	104.42	110.36

Continued on next page...

Continued from previous page...

Mol	Chain	Res	Type	Atoms	Z	Observed(°)	Ideal(°)
3	A	605	BMA	O5-C1-C2	-2.72	106.53	110.79
7	A	611	SFJ	CAT-NAL-CAN	-2.64	116.52	123.19
7	A	611	SFJ	CAS-CAR-CAT	-2.63	106.46	109.74
3	B	605	BMA	C1-O5-C5	-2.54	108.67	112.17
2	B	608	NAG	C6-C5-C4	-2.49	107.17	113.00
7	A	611	SFJ	OAG-CAQ-CAP	-2.44	102.77	108.82
4	A	608	FUC	C3-C4-C5	-2.44	105.85	109.68
7	A	612	SFJ	CAU-CAT-NAL	-2.39	106.79	111.00
4	B	609	FUC	O2-C2-C3	-2.39	105.49	110.17
2	B	602	NAG	O5-C1-C2	-2.29	108.29	111.47
7	A	612	SFJ	FAI-CAS-CAR	-2.27	106.83	108.49
2	B	603	NAG	O4-C4-C3	-2.22	105.52	110.36
4	A	608	FUC	O2-C2-C3	-2.15	105.95	110.17
3	A	604	BMA	O3-C3-C4	-2.14	105.70	110.36
5	A	609[A]	FSI	C11-C10-N5	-2.14	112.24	116.11
5	B	610[A]	FSI	F1-C3-C4	-2.13	106.93	108.49
2	B	604	NAG	C6-C5-C4	-2.13	108.03	113.00
5	B	610[A]	FSI	C8-C7-C6	-2.10	108.95	113.04
5	B	610[A]	FSI	F1-C3-C2	-2.10	105.18	108.00
2	B	604	NAG	O3-C3-C4	2.05	114.82	110.36
7	A	612	SFJ	OAD-CAK-CAP	2.13	115.81	111.11
2	B	604	NAG	O4-C4-C3	2.17	115.08	110.36
2	B	602	NAG	C1-O5-C5	2.19	115.18	112.17
4	A	608	FUC	C1-O5-C5	2.26	117.38	112.39
3	A	605	BMA	C2-C3-C4	2.34	114.95	110.88
2	A	606	NAG	O3-C3-C2	2.39	114.51	109.39
3	B	606	BMA	O3-C3-C2	2.39	114.38	110.02
2	A	607	NAG	C1-C2-N2	2.63	114.99	110.49
2	B	603	NAG	C3-C4-C5	2.68	114.94	110.22
2	A	601	NAG	C1-C2-N2	2.73	115.15	110.49
2	A	603	NAG	C2-N2-C7	2.74	126.93	122.94
7	A	611	SFJ	FAI-CAS-CAR	2.75	110.50	108.49
3	B	606	BMA	O4-C4-C5	2.81	116.37	109.28
2	A	603	NAG	C3-C4-C5	2.82	115.18	110.22
2	B	602	NAG	C4-C3-C2	2.83	115.17	111.02
4	B	609	FUC	C2-C3-C4	2.83	115.81	110.88
3	A	604	BMA	C3-C4-C5	2.89	115.31	110.22
2	A	602	NAG	C8-C7-N2	2.94	121.42	116.11
4	A	608	FUC	O5-C1-C2	3.00	115.49	110.79
7	A	611	SFJ	OAG-CAQ-CAU	3.06	116.30	109.46
2	B	604	NAG	C1-O5-C5	3.06	116.38	112.17
2	A	603	NAG	C8-C7-N2	3.27	122.02	116.11

Continued on next page...

Continued from previous page...

Mol	Chain	Res	Type	Atoms	Z	Observed(°)	Ideal(°)
5	A	609[A]	FSI	C6-O6-C2	3.30	120.89	112.15
3	B	606	BMA	O5-C1-C2	3.40	116.12	110.79
3	A	605	BMA	C3-C4-C5	3.42	116.25	110.22
2	A	602	NAG	C4-C3-C2	3.49	116.13	111.02
2	A	603	NAG	C1-O5-C5	3.59	117.11	112.17
7	B	612	SFJ	OAM-CAU-CAQ	3.62	112.69	107.41
4	B	609	FUC	O5-C1-C2	3.70	116.58	110.79
5	A	609[A]	FSI	F1-C3-C4	4.11	111.50	108.49
4	B	609	FUC	O2-C2-C1	4.17	117.65	109.18
2	A	602	NAG	C2-N2-C7	4.29	129.20	122.94
7	B	612	SFJ	OAG-CAQ-CAU	4.80	120.18	109.46
3	B	606	BMA	C1-O5-C5	4.88	118.90	112.17
3	B	606	BMA	C1-C2-C3	4.93	115.90	109.65
2	B	608	NAG	C1-C2-N2	5.00	119.03	110.49
2	B	603	NAG	C1-O5-C5	5.10	119.20	112.17
4	B	609	FUC	C1-C2-C3	5.21	116.25	109.65
2	A	601	NAG	C1-O5-C5	5.55	119.81	112.17
2	B	608	NAG	C1-O5-C5	5.91	120.31	112.17
7	A	612	SFJ	CAS-CAR-CAT	6.48	117.85	109.74
7	B	612	SFJ	CAS-CAR-CAT	7.14	118.68	109.74
4	A	608	FUC	C1-C2-C3	7.71	119.42	109.65
7	B	612	SFJ	FAI-CAS-CAR	10.40	116.11	108.49

There are no chirality outliers.

There are no torsion outliers.

There are no ring outliers.

10 monomers are involved in 14 short contacts:

Mol	Chain	Res	Type	Clashes	Symm-Clashes
2	A	601	NAG	1	0
2	A	606	NAG	1	0
6	A	610[B]	DF4	1	0
7	A	612	SFJ	2	0
2	B	604	NAG	1	0
2	B	607	NAG	2	0
4	B	609	FUC	1	0
6	B	611[B]	DF4	1	0
7	B	612	SFJ	4	0
8	B	618	SO4	1	0

5.7 Other polymers [i](#)

There are no such residues in this entry.

5.8 Polymer linkage issues [i](#)

There are no chain breaks in this entry.

6 Fit of model and data [i](#)

6.1 Protein, DNA and RNA chains [i](#)

In the following table, the column labelled ‘#RSRZ > 2’ contains the number (and percentage) of RSRZ outliers, followed by percent RSRZ outliers for the chain as percentile scores relative to all X-ray entries and entries of similar resolution. The OWAB column contains the minimum, median, 95th percentile and maximum values of the occupancy-weighted average B-factor per residue. The column labelled ‘Q < 0.9’ lists the number of (and percentage) of residues with an average occupancy less than 0.9.

Mol	Chain	Analysed	<RSRZ>	#RSRZ>2	OWAB(Å ²)	Q<0.9
1	A	431/431 (100%)	-0.20	1 (0%) 94 95	17, 32, 55, 86	0
1	B	431/431 (100%)	-0.18	2 (0%) 90 91	19, 32, 58, 90	0
All	All	862/862 (100%)	-0.19	3 (0%) 93 94	17, 32, 56, 90	0

All (3) RSRZ outliers are listed below:

Mol	Chain	Res	Type	RSRZ
1	A	572	SER	3.8
1	B	142	ILE	2.8
1	B	354	GLY	2.1

6.2 Non-standard residues in protein, DNA, RNA chains [i](#)

In the following table, the Atoms column lists the number of modelled atoms in the group and the number defined in the chemical component dictionary. LLDF column lists the quality of electron density of the group with respect to its neighbouring residues in protein, DNA or RNA chains. The B-factors column lists the minimum, median, 95th percentile and maximum values of B factors of atoms in the group. The column labelled ‘Q < 0.9’ lists the number of atoms with occupancy less than 0.9.

Mol	Type	Chain	Res	Atoms	RSCC	RSR	LLDF	B-factors(Å ²)	Q<0.9
2	NAG	A	601	14/15	0.75	0.26	6.39	82,92,101,105	0
2	NAG	A	606	14/15	0.69	0.17	0.28	70,81,97,99	0
2	NAG	A	603	14/15	0.90	0.22	-	73,85,90,97	0
2	NAG	A	607	14/15	0.73	0.29	-	96,114,124,129	0
2	NAG	B	603	14/15	0.93	0.21	-	71,74,86,92	0
2	NAG	B	604	14/15	0.88	0.21	-	58,75,79,99	0
2	NAG	A	602	14/15	0.83	0.23	-	72,84,90,94	0
2	NAG	B	608	14/15	0.85	0.27	-	72,80,94,99	0

6.3 Carbohydrates

There are no carbohydrates in this entry.

6.4 Ligands

In the following table, the Atoms column lists the number of modelled atoms in the group and the number defined in the chemical component dictionary. LLDF column lists the quality of electron density of the group with respect to its neighbouring residues in protein, DNA or RNA chains. The B-factors column lists the minimum, median, 95th percentile and maximum values of B factors of atoms in the group. The column labelled 'Q< 0.9' lists the number of atoms with occupancy less than 0.9.

Mol	Type	Chain	Res	Atoms	RSCC	RSR	LLDF	B-factors(Å ²)	Q<0.9
4	FUC	A	608	10/11	0.79	0.34	12.94	97,105,111,111	0
7	SFJ	A	612	22/22	0.80	0.29	6.42	54,76,87,91	0
2	NAG	A	601	14/15	0.75	0.26	6.39	82,92,101,105	0
4	FUC	B	609	10/11	0.81	0.22	3.05	57,62,64,66	0
7	SFJ	B	612	22/22	0.85	0.31	2.87	51,67,74,80	0
8	SO4	B	618	5/5	0.95	0.22	1.63	85,85,89,91	0
8	SO4	A	614	5/5	0.95	0.18	1.53	52,54,62,69	0
8	SO4	B	614	5/5	0.95	0.16	1.29	70,71,73,77	0
6	DF4	A	610[B]	21/21	0.97	0.15	0.86	17,18,19,20	21
5	FSI	B	610[A]	21/22	0.98	0.14	0.30	23,25,30,31	21
6	DF4	B	611[B]	21/21	0.98	0.14	0.29	13,13,14,14	21
2	NAG	A	606	14/15	0.69	0.17	0.28	70,81,97,99	0
8	SO4	B	615	5/5	0.91	0.15	0.01	79,82,85,89	0
8	SO4	A	616	5/5	0.95	0.16	-0.01	64,65,69,70	0
7	SFJ	A	611	22/22	0.91	0.14	-0.25	36,49,55,57	0
2	NAG	B	602	14/15	0.91	0.14	-0.68	46,66,79,80	0
5	FSI	A	609[A]	21/22	0.97	0.12	-0.87	21,24,29,30	21
8	SO4	B	601	5/5	0.97	0.11	-1.84	70,71,75,75	0
9	CA	B	619	1/1	0.99	0.07	-2.82	32,32,32,32	0
9	CA	A	619	1/1	0.98	0.07	-3.95	37,37,37,37	0
2	NAG	B	607	14/15	0.90	0.15	-	52,60,71,72	0
2	NAG	A	607	14/15	0.73	0.29	-	96,114,124,129	0
3	BMA	A	604	11/12	0.74	0.27	-	94,102,106,108	0
3	BMA	A	605	11/12	0.75	0.28	-	70,93,102,104	0
8	SO4	A	618	5/5	0.98	0.13	-	61,61,64,64	0
8	SO4	A	613	5/5	0.91	0.19	-	64,80,83,84	0
8	SO4	B	617	5/5	0.92	0.24	-	72,79,82,93	0
2	NAG	B	608	14/15	0.85	0.27	-	72,80,94,99	0
3	BMA	B	606	11/12	0.73	0.29	-	84,98,102,105	0
8	SO4	A	615	5/5	0.91	0.23	-	79,79,87,88	0

Continued on next page...

Continued from previous page...

Mol	Type	Chain	Res	Atoms	RSCC	RSR	LLDF	B-factors(\AA^2)	Q<0.9
2	NAG	B	603	14/15	0.93	0.21	-	71,74,86,92	0
2	NAG	A	603	14/15	0.90	0.22	-	73,85,90,97	0
3	BMA	B	605	11/12	0.76	0.36	-	98,111,114,115	0
8	SO4	A	617	5/5	0.96	0.18	-	77,83,83,92	0
8	SO4	B	613	5/5	0.92	0.24	-	75,77,87,88	0
2	NAG	B	604	14/15	0.88	0.21	-	58,75,79,99	0
2	NAG	A	602	14/15	0.83	0.23	-	72,84,90,94	0
8	SO4	B	616	5/5	0.90	0.26	-	77,77,84,92	0

6.5 Other polymers [i](#)

There are no such residues in this entry.