



wwPDB X-ray Structure Validation Summary Report ⓘ

Nov 13, 2017 – 03:06 PM EST

PDB ID : 3WFD
Title : Reduced and acetaldoxime-bound cytochrome c-dependent nitric oxide reductase (cNOR) from *Pseudomonas aeruginosa* in complex with antibody fragment
Authors : Sato, N.; Ishii, S.; Hino, T.; Sugimoto, H.; Fukumori, Y.; Shiro, Y.; Tosha, T.
Deposited on : unknown
Resolution : 2.30 Å(reported)

This is a wwPDB X-ray Structure Validation Summary Report for a publicly released PDB entry.

We welcome your comments at validation@mail.wwpdb.org

A user guide is available at

<http://wwpdb.org/validation/2016/XrayValidationReportHelp>

with specific help available everywhere you see the ⓘ symbol.

The following versions of software and data (see [references ⓘ](#)) were used in the production of this report:

MolProbity	:	4.02b-467
Mogul	:	1.7.2 (RC1), CSD as538be (2017)
Xtriage (Phenix)	:	1.9-1692
EDS	:	rb-20030345
Percentile statistics	:	20161228.v01 (using entries in the PDB archive December 28th 2016)
Refmac	:	5.8.0135
CCP4	:	6.5.0
Ideal geometry (proteins)	:	Engh & Huber (2001)
Ideal geometry (DNA, RNA)	:	Parkinson et al. (1996)
Validation Pipeline (wwPDB-VP)	:	rb-20030345

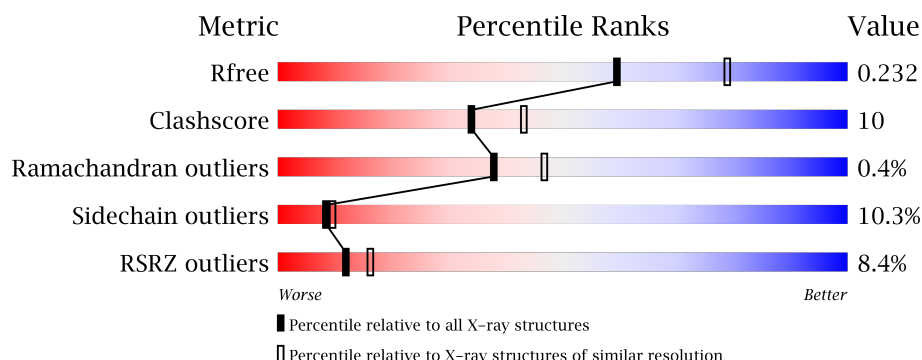
1 Overall quality at a glance

The following experimental techniques were used to determine the structure:

X-RAY DIFFRACTION

The reported resolution of this entry is 2.30 Å.

Percentile scores (ranging between 0-100) for global validation metrics of the entry are shown in the following graphic. The table shows the number of entries on which the scores are based.



Metric	Whole archive (#Entries)	Similar resolution (#Entries, resolution range(Å))
R_{free}	100719	4130 (2.30-2.30)
Clashscore	112137	4751 (2.30-2.30)
Ramachandran outliers	110173	4705 (2.30-2.30)
Sidechain outliers	110143	4704 (2.30-2.30)
RSRZ outliers	101464	4156 (2.30-2.30)

The table below summarises the geometric issues observed across the polymeric chains and their fit to the electron density. The red, orange, yellow and green segments on the lower bar indicate the fraction of residues that contain outliers for ≥ 3 , 2, 1 and 0 types of geometric quality criteria. A grey segment represents the fraction of residues that are not modelled. The numeric value for each fraction is indicated below the corresponding segment, with a dot representing fractions $\leq 5\%$. The upper red bar (where present) indicates the fraction of residues that have poor fit to the electron density. The numeric value is given above the bar.

Mol	Chain	Length	Quality of chain
1	L	213	<div> <div>0.0%</div> <div> <div></div> <div>77%</div> <div>21%</div> <div>•</div> </div> </div>
2	H	225	<div> <div>5%</div> <div> <div></div> <div>82%</div> <div>14%</div> <div>•</div> </div> </div>
3	B	465	<div> <div>12%</div> <div> <div></div> <div>72%</div> <div>19%</div> <div>5%</div> <div>•</div> </div> </div>
4	C	146	<div> <div>10%</div> <div> <div></div> <div>82%</div> <div>12%</div> <div>• •</div> </div> </div>

The following table lists non-polymeric compounds, carbohydrate monomers and non-standard residues in protein, DNA, RNA chains that are outliers for geometric or electron-density-fit crite-

ria:

Mol	Type	Chain	Res	Chirality	Geometry	Clashes	Electron density
7	AXO	B	804	-	X	-	-
8	10M	B	805	-	-	-	X
8	10M	B	807	-	-	-	X

2 Entry composition

There are 11 unique types of molecules in this entry. The entry contains 8556 atoms, of which 0 are hydrogens and 0 are deuteriums.

In the tables below, the ZeroOcc column contains the number of atoms modelled with zero occupancy, the AltConf column contains the number of residues with at least one atom in alternate conformation and the Trace column contains the number of residues modelled with at most 2 atoms.

- Molecule 1 is a protein called antibody fab fragment light chain.

Mol	Chain	Residues	Atoms					ZeroOcc	AltConf	Trace
1	L	213	Total	C	N	O	S	0	0	0
			1669	1047	277	338	7			

- Molecule 2 is a protein called antibody fab fragment heavy chain.

Mol	Chain	Residues	Atoms					ZeroOcc	AltConf	Trace
2	H	225	Total	C	N	O	S	0	0	0
			1692	1065	280	338	9			

- Molecule 3 is a protein called Nitric oxide reductase subunit B.

Mol	Chain	Residues	Atoms					ZeroOcc	AltConf	Trace
3	B	449	Total	C	N	O	S	0	0	0
			3576	2416	563	572	25			

There is a discrepancy between the modelled and reference sequences:

Chain	Residue	Modelled	Actual	Comment	Reference
B	?	-	ARG	DELETION	UNP Q59647

- Molecule 4 is a protein called Nitric oxide reductase subunit C.

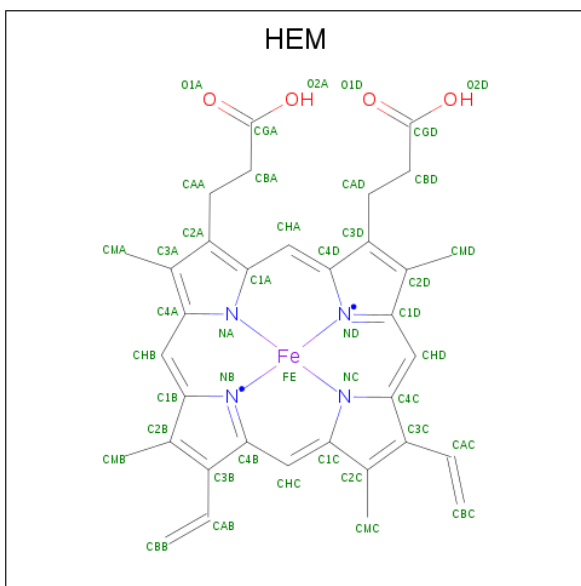
Mol	Chain	Residues	Atoms					ZeroOcc	AltConf	Trace
4	C	142	Total	C	N	O	S	0	0	0
			1123	720	195	202	6			

There is a discrepancy between the modelled and reference sequences:

Chain	Residue	Modelled	Actual	Comment	Reference
C	100	LYS	ASN	CONFLICT	UNP Q59646

- Molecule 5 is PROTOPORPHYRIN IX CONTAINING FE (three-letter code: HEM) (for-

mula: C₃₄H₃₂FeN₄O₄).

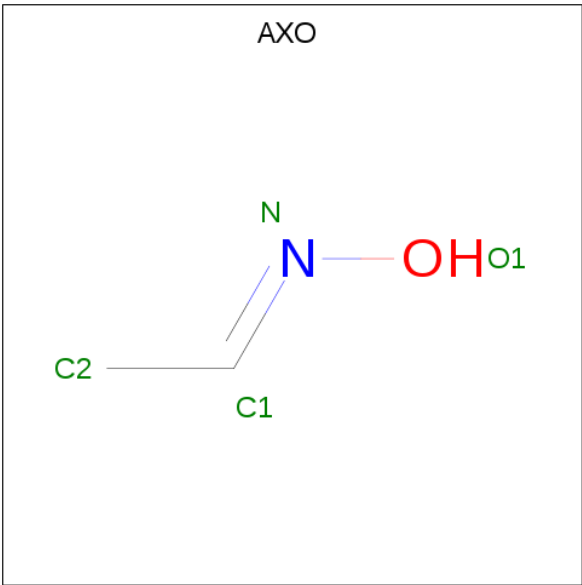


Mol	Chain	Residues	Atoms					ZeroOcc	AltConf
5	B	1	Total 43	C 34	Fe 1	N 4	O 4	0	0
5	B	1	Total 43	C 34	Fe 1	N 4	O 4	0	0

- Molecule 6 is FE (III) ION (three-letter code: FE) (formula: Fe).

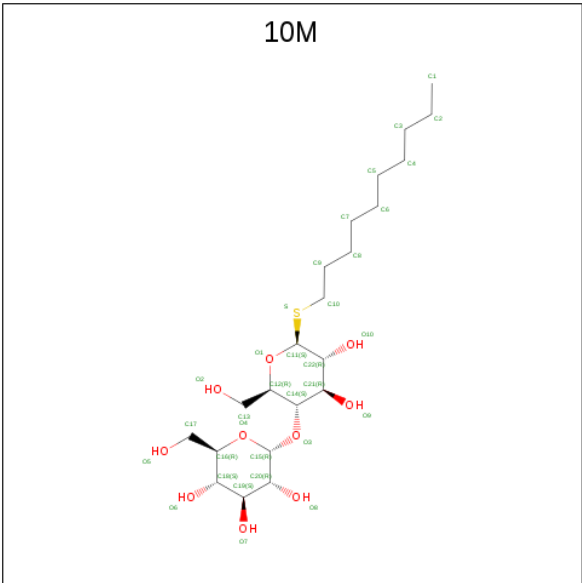
Mol	Chain	Residues	Atoms	ZeroOcc	AltConf
6	B	1	Total Fe 1 1	0	0

- Molecule 7 is (1E)-N-hydroxyethanimine (three-letter code: AXO) (formula: $\text{C}_2\text{H}_5\text{NO}$).



Mol	Chain	Residues	Atoms				ZeroOcc	AltConf
7	B	1	Total	C	N	O	0	0
			4	2	1	1		

- Molecule 8 is decyl 4-O-alpha-D-glucopyranosyl-1-thio-beta-D-glucopyranoside (three-letter code: 10M) (formula: C₂₂H₄₂O₁₀S).

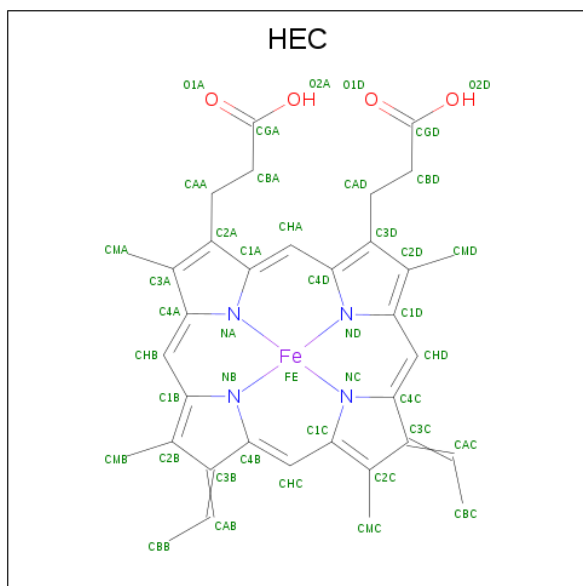


Mol	Chain	Residues	Atoms				ZeroOcc	AltConf
8	B	1	Total	C	O	S	0	0
			33	22	10	1		
8	B	1	Total	C	O	S	0	0
			33	22	10	1		

- Molecule 9 is CALCIUM ION (three-letter code: CA) (formula: Ca).

Mol	Chain	Residues	Atoms		ZeroOcc	AltConf
9	B	1	Total	Ca	0	0
			1	1		

- Molecule 10 is HEME C (three-letter code: HEC) (formula: $C_{34}H_{34}FeN_4O_4$).



Mol	Chain	Residues	Atoms					ZeroOcc	AltConf
10	C	1	Total	C	Fe	N	O	0	0
			43	34	1	4	4		

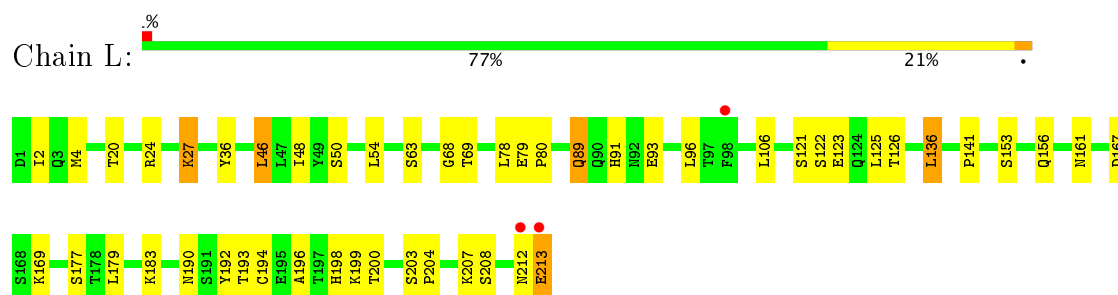
- Molecule 11 is water.

Mol	Chain	Residues	Atoms		ZeroOcc	AltConf
11	L	94	Total	O	0	0
			94	94		
11	H	100	Total	O	0	0
			100	100		
11	B	53	Total	O	0	0
			53	53		
11	C	48	Total	O	0	0
			48	48		

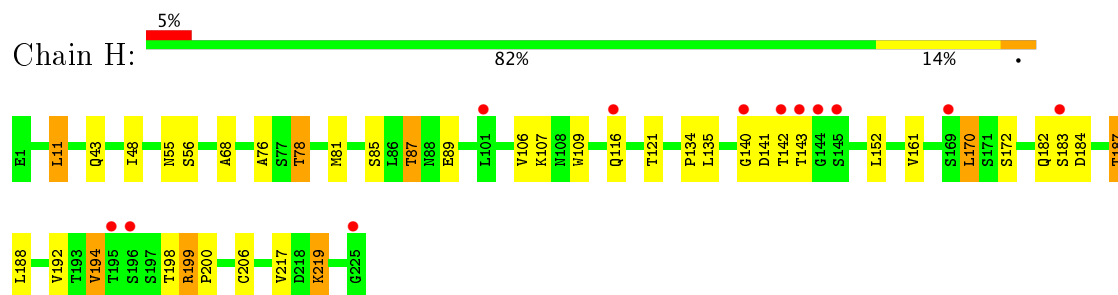
3 Residue-property plots [i](#)

These plots are drawn for all protein, RNA and DNA chains in the entry. The first graphic for a chain summarises the proportions of the various outlier classes displayed in the second graphic. The second graphic shows the sequence view annotated by issues in geometry and electron density. Residues are color-coded according to the number of geometric quality criteria for which they contain at least one outlier: green = 0, yellow = 1, orange = 2 and red = 3 or more. A red dot above a residue indicates a poor fit to the electron density ($RSRZ > 2$). Stretches of 2 or more consecutive residues without any outlier are shown as a green connector. Residues present in the sample, but not in the model, are shown in grey.

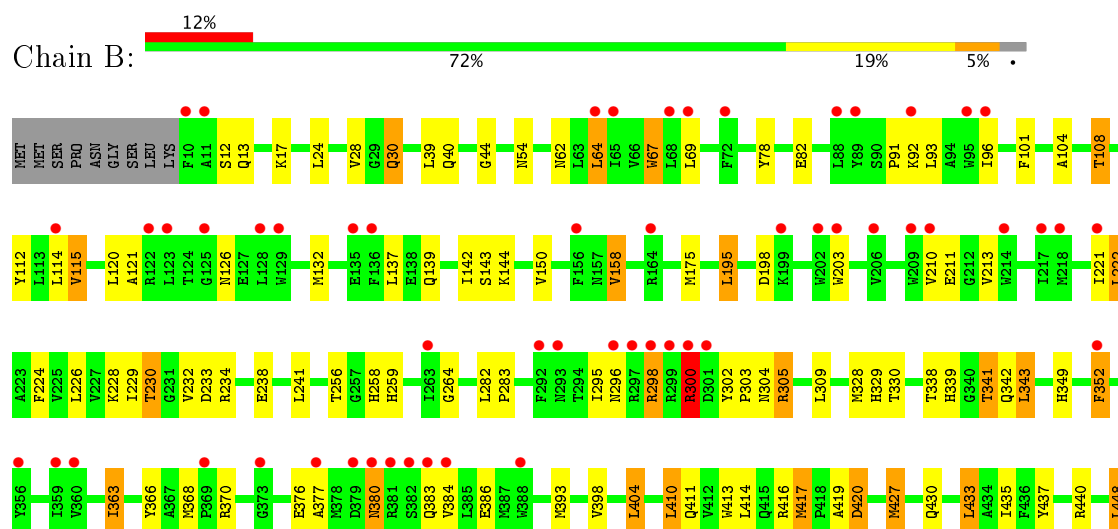
- Molecule 1: antibody fab fragment light chain

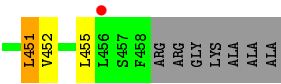


- Molecule 2: antibody fab fragment heavy chain

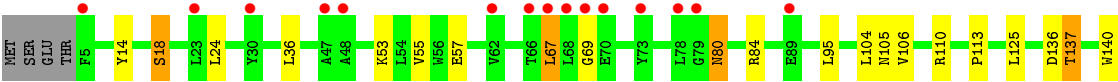
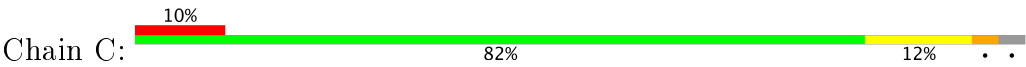


- Molecule 3: Nitric oxide reductase subunit B





● Molecule 4: Nitric oxide reductase subunit C



4 Data and refinement statistics

Property	Value	Source
Space group	P 21 21 21	Depositor
Cell constants a, b, c, α , β , γ	90.93Å 106.75Å 196.44Å 90.00° 90.00° 90.00°	Depositor
Resolution (Å)	33.38 – 2.30 33.36 – 2.30	Depositor EDS
% Data completeness (in resolution range)	96.1 (33.38-2.30) 96.2 (33.36-2.30)	Depositor EDS
R_{merge}	0.10	Depositor
R_{sym}	0.10	Depositor
$\langle I/\sigma(I) \rangle$ ¹	2.81 (at 2.29Å)	Xtriage
Refinement program	REFMAC 5.7.0029	Depositor
R, R_{free}	0.191 , 0.232 0.191 , 0.232	Depositor DCC
R_{free} test set	4221 reflections (5.38%)	DCC
Wilson B-factor (Å ²)	49.6	Xtriage
Anisotropy	0.406	Xtriage
Bulk solvent k_{sol} (e/Å ³), B_{sol} (Å ²)	0.35 , 54.3	EDS
L-test for twinning ²	$\langle L \rangle = 0.50$, $\langle L^2 \rangle = 0.34$	Xtriage
Estimated twinning fraction	No twinning to report.	Xtriage
F_o, F_c correlation	0.96	EDS
Total number of atoms	8556	wwPDB-VP
Average B, all atoms (Å ²)	60.0	wwPDB-VP

Xtriage's analysis on translational NCS is as follows: *The largest off-origin peak in the Patterson function is 3.62% of the height of the origin peak. No significant pseudotranslation is detected.*

¹Intensities estimated from amplitudes.

²Theoretical values of $\langle |L| \rangle$, $\langle L^2 \rangle$ for acentric reflections are 0.5, 0.333 respectively for untwinned datasets, and 0.375, 0.2 for perfectly twinned datasets.

5 Model quality [i](#)

5.1 Standard geometry [i](#)

Bond lengths and bond angles in the following residue types are not validated in this section: 10M, CA, FE, HEC, HEM, AXO

The Z score for a bond length (or angle) is the number of standard deviations the observed value is removed from the expected value. A bond length (or angle) with $|Z| > 5$ is considered an outlier worth inspection. RMSZ is the root-mean-square of all Z scores of the bond lengths (or angles).

Mol	Chain	Bond lengths		Bond angles	
		RMSZ	$\# Z > 5$	RMSZ	$\# Z > 5$
1	L	0.92	2/1709 (0.1%)	0.95	1/2317 (0.0%)
2	H	0.93	1/1735 (0.1%)	0.95	1/2367 (0.0%)
3	B	0.77	1/3693 (0.0%)	0.83	7/5039 (0.1%)
4	C	0.73	0/1153	0.82	0/1559
All	All	0.83	4/8290 (0.0%)	0.88	9/11282 (0.1%)

All (4) bond length outliers are listed below:

Mol	Chain	Res	Type	Atoms	Z	Observed(Å)	Ideal(Å)
1	L	63	SER	CA-CB	5.58	1.61	1.52
2	H	206	CYS	CB-SG	-5.43	1.73	1.81
1	L	194	CYS	CB-SG	-5.10	1.73	1.81
3	B	437	TYR	CE1-CZ	5.09	1.45	1.38

The worst 5 of 9 bond angle outliers are listed below:

Mol	Chain	Res	Type	Atoms	Z	Observed(°)	Ideal(°)
3	B	198	ASP	CB-CG-OD1	6.89	124.50	118.30
3	B	427	MET	CG-SD-CE	-5.71	91.07	100.20
3	B	198	ASP	CB-CG-OD2	-5.59	113.27	118.30
3	B	300	ARG	NE-CZ-NH1	5.49	123.05	120.30
2	H	206	CYS	CA-CB-SG	-5.38	104.31	114.00

There are no chirality outliers.

There are no planarity outliers.

5.2 Too-close contacts ⓘ

In the following table, the Non-H and H(model) columns list the number of non-hydrogen atoms and hydrogen atoms in the chain respectively. The H(added) column lists the number of hydrogen atoms added and optimized by MolProbity. The Clashes column lists the number of clashes within the asymmetric unit, whereas Symm-Clashes lists symmetry related clashes.

Mol	Chain	Non-H	H(model)	H(added)	Clashes	Symm-Clashes
1	L	1669	0	1606	34	0
2	H	1692	0	1647	29	0
3	B	3576	0	3619	85	0
4	C	1123	0	1092	18	0
5	B	86	0	60	5	0
6	B	1	0	0	0	0
7	B	4	0	4	1	0
8	B	66	0	84	2	0
9	B	1	0	0	0	0
10	C	43	0	30	1	0
11	B	53	0	0	1	0
11	C	48	0	0	0	0
11	H	100	0	0	1	0
11	L	94	0	0	1	0
All	All	8556	0	8142	158	0

The all-atom clashscore is defined as the number of clashes found per 1000 atoms (including hydrogen atoms). The all-atom clashscore for this structure is 10.

The worst 5 of 158 close contacts within the same asymmetric unit are listed below, sorted by their clash magnitude.

Atom-1	Atom-2	Interatomic distance (Å)	Clash overlap (Å)
2:H:199:ARG:CG	2:H:199:ARG:HH11	1.52	1.22
2:H:199:ARG:NH1	2:H:199:ARG:HG3	1.48	1.11
3:B:126:ASN:HB2	3:B:132:MET:HE2	1.20	1.10
3:B:121:ALA:HA	3:B:132:MET:HE1	1.26	1.08
3:B:126:ASN:HB2	3:B:132:MET:CE	1.88	1.02

There are no symmetry-related clashes.

5.3 Torsion angles

5.3.1 Protein backbone

In the following table, the Percentiles column shows the percent Ramachandran outliers of the chain as a percentile score with respect to all X-ray entries followed by that with respect to entries of similar resolution.

The Analysed column shows the number of residues for which the backbone conformation was analysed, and the total number of residues.

Mol	Chain	Analysed	Favoured	Allowed	Outliers	Percentiles	
1	L	211/213 (99%)	206 (98%)	4 (2%)	1 (0%)	32	39
2	H	223/225 (99%)	210 (94%)	11 (5%)	2 (1%)	20	23
3	B	447/465 (96%)	434 (97%)	12 (3%)	1 (0%)	51	63
4	C	140/146 (96%)	136 (97%)	4 (3%)	0	100	100
All	All	1021/1049 (97%)	986 (97%)	31 (3%)	4 (0%)	38	47

All (4) Ramachandran outliers are listed below:

Mol	Chain	Res	Type
3	B	256	THR
2	H	140	GLY
2	H	141	ASP
1	L	68	GLY

5.3.2 Protein sidechains

In the following table, the Percentiles column shows the percent sidechain outliers of the chain as a percentile score with respect to all X-ray entries followed by that with respect to entries of similar resolution.

The Analysed column shows the number of residues for which the sidechain conformation was analysed, and the total number of residues.

Mol	Chain	Analysed	Rotameric	Outliers	Percentiles	
1	L	189/189 (100%)	175 (93%)	14 (7%)	16	20
2	H	192/192 (100%)	172 (90%)	20 (10%)	8	9
3	B	360/371 (97%)	314 (87%)	46 (13%)	5	5
4	C	116/120 (97%)	108 (93%)	8 (7%)	18	23
All	All	857/872 (98%)	769 (90%)	88 (10%)	8	9

5 of 88 residues with a non-rotameric sidechain are listed below:

Mol	Chain	Res	Type
3	B	67	TRP
3	B	222	LEU
4	C	24	LEU
3	B	92	LYS
3	B	114	LEU

Some sidechains can be flipped to improve hydrogen bonding and reduce clashes. 5 of 23 such sidechains are listed below:

Mol	Chain	Res	Type
3	B	62	ASN
3	B	139	GLN
4	C	96	GLN
3	B	126	ASN
3	B	296	ASN

5.3.3 RNA ⓘ

There are no RNA molecules in this entry.

5.4 Non-standard residues in protein, DNA, RNA chains ⓘ

There are no non-standard protein/DNA/RNA residues in this entry.

5.5 Carbohydrates ⓘ

There are no carbohydrates in this entry.

5.6 Ligand geometry ⓘ

Of 8 ligands modelled in this entry, 2 are monoatomic - leaving 6 for Mogul analysis.

In the following table, the Counts columns list the number of bonds (or angles) for which Mogul statistics could be retrieved, the number of bonds (or angles) that are observed in the model and the number of bonds (or angles) that are defined in the Chemical Component Dictionary. The Link column lists molecule types, if any, to which the group is linked. The Z score for a bond length (or angle) is the number of standard deviations the observed value is removed from the expected value. A bond length (or angle) with $|Z| > 2$ is considered an outlier worth inspection. RMSZ is the root-mean-square of all Z scores of the bond lengths (or angles).

Mol	Type	Chain	Res	Link	Bond lengths			Bond angles		
					Counts	RMSZ	# Z > 2	Counts	RMSZ	# Z > 2
5	HEM	B	801	9,3	28,50,50	2.18	7 (25%)	17,82,82	3.85	6 (35%)
5	HEM	B	802	9,3,7	28,50,50	2.22	9 (32%)	17,82,82	3.06	7 (41%)
7	AXO	B	804	5,6	2,3,3	3.87	2 (100%)	1,2,2	12.44	1 (100%)
8	10M	B	805	-	34,34,34	1.35	4 (11%)	44,45,45	1.56	8 (18%)
8	10M	B	807	-	34,34,34	1.34	3 (8%)	44,45,45	1.05	3 (6%)
10	HEC	C	201	4	28,50,50	2.58	9 (32%)	16,82,82	2.20	5 (31%)

In the following table, the Chirals column lists the number of chiral outliers, the number of chiral centers analysed, the number of these observed in the model and the number defined in the Chemical Component Dictionary. Similar counts are reported in the Torsion and Rings columns. '-' means no outliers of that kind were identified.

Mol	Type	Chain	Res	Link	Chirals	Torsions	Rings
5	HEM	B	801	9,3	-	0/6/54/54	0/0/8/8
5	HEM	B	802	9,3,7	-	0/6/54/54	0/0/8/8
7	AXO	B	804	5,6	-	0/0/1/1	0/0/0/0
8	10M	B	805	-	-	0/19/59/59	0/2/2/2
8	10M	B	807	-	-	0/19/59/59	0/2/2/2
10	HEC	C	201	4	-	0/6/54/54	0/0/8/8

The worst 5 of 34 bond length outliers are listed below:

Mol	Chain	Res	Type	Atoms	Z	Observed(Å)	Ideal(Å)
10	C	201	HEC	C3B-C2B	-6.94	1.33	1.40
10	C	201	HEC	C3C-C2C	-6.27	1.34	1.40
5	B	802	HEM	C3C-C2C	-5.07	1.33	1.40
5	B	801	HEM	C3C-C2C	-5.06	1.33	1.40
5	B	801	HEM	C3B-C2B	-4.57	1.34	1.40

The worst 5 of 30 bond angle outliers are listed below:

Mol	Chain	Res	Type	Atoms	Z	Observed(°)	Ideal(°)
7	B	804	AXO	O1-N-C1	-12.44	99.75	111.69
5	B	802	HEM	C1D-C2D-C3D	-6.46	102.50	107.00
5	B	802	HEM	CBA-CAA-C2A	-6.22	100.58	112.48
5	B	801	HEM	CBD-CAD-C3D	-5.83	101.34	112.47
5	B	801	HEM	CAA-CBA-CGA	-5.75	102.83	112.66

There are no chirality outliers.

There are no torsion outliers.

There are no ring outliers.

5 monomers are involved in 9 short contacts:

Mol	Chain	Res	Type	Clashes	Symm-Clashes
5	B	801	HEM	2	0
5	B	802	HEM	3	0
7	B	804	AXO	1	0
8	B	805	10M	2	0
10	C	201	HEC	1	0

5.7 Other polymers [i](#)

There are no such residues in this entry.

5.8 Polymer linkage issues [i](#)

There are no chain breaks in this entry.

6 Fit of model and data [i](#)

6.1 Protein, DNA and RNA chains [i](#)

In the following table, the column labelled ‘#RSRZ> 2’ contains the number (and percentage) of RSRZ outliers, followed by percent RSRZ outliers for the chain as percentile scores relative to all X-ray entries and entries of similar resolution. The OWAB column contains the minimum, median, 95th percentile and maximum values of the occupancy-weighted average B-factor per residue. The column labelled ‘Q< 0.9’ lists the number of (and percentage) of residues with an average occupancy less than 0.9.

Mol	Chain	Analysed	<RSRZ>	#RSRZ>2	OWAB(Å ²)	Q<0.9
1	L	213/213 (100%)	-0.25	3 (1%) 75 80	37, 49, 70, 118	0
2	H	225/225 (100%)	0.01	12 (5%) 27 34	37, 49, 79, 148	0
3	B	449/465 (96%)	0.38	56 (12%) 4 6	40, 63, 102, 137	0
4	C	142/146 (97%)	0.42	15 (10%) 7 10	40, 61, 85, 109	0
All	All	1029/1049 (98%)	0.17	86 (8%) 12 16	37, 57, 92, 148	0

The worst 5 of 86 RSRZ outliers are listed below:

Mol	Chain	Res	Type	RSRZ
3	B	299	ARG	7.9
3	B	381	ARG	7.6
3	B	206	VAL	5.5
3	B	296	ASN	5.2
2	H	143	THR	5.0

6.2 Non-standard residues in protein, DNA, RNA chains [i](#)

There are no non-standard protein/DNA/RNA residues in this entry.

6.3 Carbohydrates [i](#)

There are no carbohydrates in this entry.

6.4 Ligands [i](#)

In the following table, the Atoms column lists the number of modelled atoms in the group and the number defined in the chemical component dictionary. LLDF column lists the quality of electron density of the group with respect to its neighbouring residues in protein, DNA or RNA chains. The B-factors column lists the minimum, median, 95th percentile and maximum values of B factors

of atoms in the group. The column labelled 'Q< 0.9' lists the number of atoms with occupancy less than 0.9.

Mol	Type	Chain	Res	Atoms	RSCC	RSR	LLDF	B-factors(\AA^2)	Q<0.9
8	10M	B	805	33/33	0.81	0.37	6.94	87,119,132,133	0
8	10M	B	807	33/33	0.94	0.25	3.40	63,84,105,114	0
10	HEC	C	201	43/43	0.98	0.19	0.74	40,44,46,50	0
5	HEM	B	801	43/43	0.96	0.19	0.23	41,47,55,68	0
5	HEM	B	802	43/43	0.98	0.20	-0.07	41,45,50,51	0
7	AXO	B	804	4/4	0.99	0.18	-0.54	45,47,49,53	0
9	CA	B	806	1/1	0.99	0.23	-0.68	52,52,52,52	0
6	FE	B	803	1/1	0.99	0.15	-	48,48,48,48	0

6.5 Other polymers [i](#)

There are no such residues in this entry.