



Full wwPDB X-ray Structure Validation Report ⓘ

Feb 13, 2017 – 07:37 pm GMT

PDB ID : 3WIX
Title : Crystal structure of Mcl-1 in complex with compound 4
Authors : Sogabe, S.; Igaki, S.; Hayano, Y.
Deposited on : 2013-09-26
Resolution : 1.90 Å(reported)

This is a Full wwPDB X-ray Structure Validation Report for a publicly released PDB entry.

We welcome your comments at validation@mail.wwpdb.org

A user guide is available at

<http://wwpdb.org/validation/2016/XrayValidationReportHelp>

with specific help available everywhere you see the ⓘ symbol.

The following versions of software and data (see [references ⓘ](#)) were used in the production of this report:

MolProbity : 4.02b-467
Mogul : 1.7.2 (RC1), CSD as538be (2017)
Xtriage (Phenix) : 1.9-1692
EDS : trunk28620
Percentile statistics : 20161228.v01 (using entries in the PDB archive December 28th 2016)
Refmac : 5.8.0135
CCP4 : 6.5.0
Ideal geometry (proteins) : Engh & Huber (2001)
Ideal geometry (DNA, RNA) : Parkinson et al. (1996)
Validation Pipeline (wwPDB-VP) : recalc28949

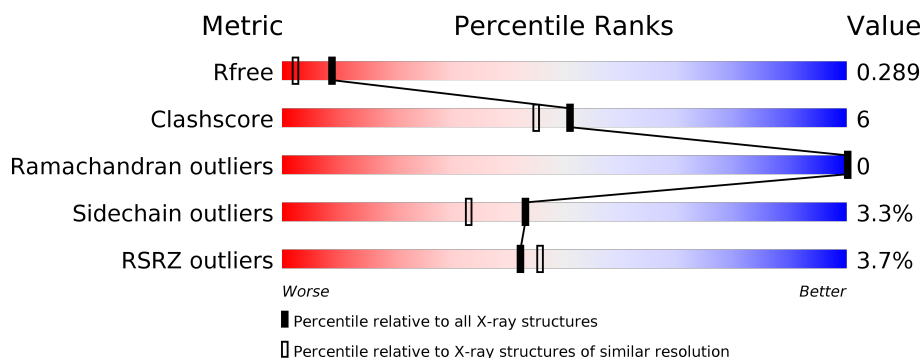
1 Overall quality at a glance

The following experimental techniques were used to determine the structure:

X-RAY DIFFRACTION

The reported resolution of this entry is 1.90 Å.

Percentile scores (ranging between 0-100) for global validation metrics of the entry are shown in the following graphic. The table shows the number of entries on which the scores are based.



Metric	Whole archive (#Entries)	Similar resolution (#Entries, resolution range(Å))
R_{free}	100719	5047 (1.90-1.90)
Clashscore	112137	5731 (1.90-1.90)
Ramachandran outliers	110173	5669 (1.90-1.90)
Sidechain outliers	110143	5670 (1.90-1.90)
RSRZ outliers	101464	5100 (1.90-1.90)

The table below summarises the geometric issues observed across the polymeric chains and their fit to the electron density. The red, orange, yellow and green segments on the lower bar indicate the fraction of residues that contain outliers for ≥ 3 , 2, 1 and 0 types of geometric quality criteria. A grey segment represents the fraction of residues that are not modelled. The numeric value for each fraction is indicated below the corresponding segment, with a dot representing fractions $\leq 5\%$. The upper red bar (where present) indicates the fraction of residues that have poor fit to the electron density. The numeric value is given above the bar.

Mol	Chain	Length	Quality of chain
1	A	161	<div> <div>83%</div> <div>10% • 7%</div> </div>
1	B	161	<div> <div>4%</div> <div>78%</div> <div>16% 7%</div> </div>
1	C	161	<div> <div>3%</div> <div>64%</div> <div>24% • 11%</div> </div>
1	D	161	<div> <div>6%</div> <div>71%</div> <div>17% • 11%</div> </div>

2 Entry composition

There are 3 unique types of molecules in this entry. The entry contains 4954 atoms, of which 0 are hydrogens and 0 are deuteriums.

In the tables below, the ZeroOcc column contains the number of atoms modelled with zero occupancy, the AltConf column contains the number of residues with at least one atom in alternate conformation and the Trace column contains the number of residues modelled with at most 2 atoms.

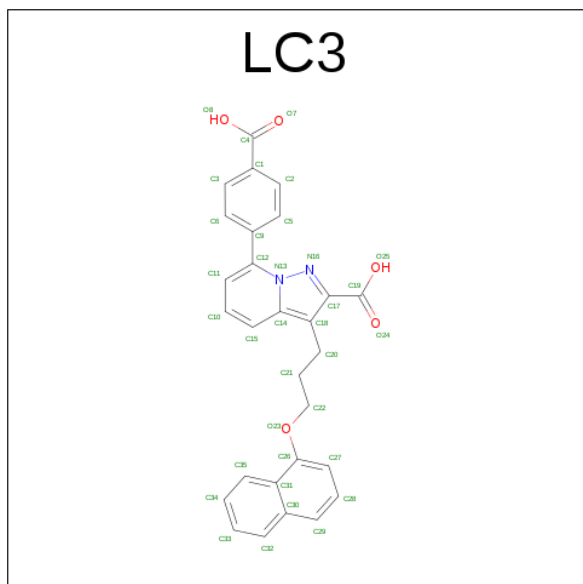
- Molecule 1 is a protein called Induced myeloid leukemia cell differentiation protein Mcl-1.

Mol	Chain	Residues	Atoms					ZeroOcc	AltConf	Trace
1	A	150	Total	C	N	O	S	0	0	0
			1208	759	223	222	4			
1	B	150	Total	C	N	O	S	0	0	0
			1208	759	223	222	4			
1	C	144	Total	C	N	O	S	0	0	0
			1163	732	213	215	3			
1	D	143	Total	C	N	O	S	0	0	0
			1156	728	212	213	3			

There are 20 discrepancies between the modelled and reference sequences:

Chain	Residue	Modelled	Actual	Comment	Reference
A	167	GLY	-	EXPRESSION TAG	UNP Q07820
A	168	PRO	-	EXPRESSION TAG	UNP Q07820
A	169	LEU	-	EXPRESSION TAG	UNP Q07820
A	170	GLY	-	EXPRESSION TAG	UNP Q07820
A	171	SER	-	EXPRESSION TAG	UNP Q07820
B	167	GLY	-	EXPRESSION TAG	UNP Q07820
B	168	PRO	-	EXPRESSION TAG	UNP Q07820
B	169	LEU	-	EXPRESSION TAG	UNP Q07820
B	170	GLY	-	EXPRESSION TAG	UNP Q07820
B	171	SER	-	EXPRESSION TAG	UNP Q07820
C	167	GLY	-	EXPRESSION TAG	UNP Q07820
C	168	PRO	-	EXPRESSION TAG	UNP Q07820
C	169	LEU	-	EXPRESSION TAG	UNP Q07820
C	170	GLY	-	EXPRESSION TAG	UNP Q07820
C	171	SER	-	EXPRESSION TAG	UNP Q07820
D	167	GLY	-	EXPRESSION TAG	UNP Q07820
D	168	PRO	-	EXPRESSION TAG	UNP Q07820
D	169	LEU	-	EXPRESSION TAG	UNP Q07820
D	170	GLY	-	EXPRESSION TAG	UNP Q07820
D	171	SER	-	EXPRESSION TAG	UNP Q07820

- Molecule 2 is 7-(4-CARBOXYPHENYL)-3-[3-(NAPHTHALEN-1-YLOXY)PROPYL]PYRAZOLO[1,5-A]PYRIDINE-2-CARBOXYLIC ACID (three-letter code: LC3) (formula: $C_{28}H_{22}N_2O_5$).



Mol	Chain	Residues	Atoms				ZeroOcc	AltConf
2	A	1	Total	C	N	O	0	0
			35	28	2	5		
2	B	1	Total	C	N	O	0	0
			35	28	2	5		
2	C	1	Total	C	N	O	0	0
			35	28	2	5		
2	D	1	Total	C	N	O	0	0
			35	28	2	5		

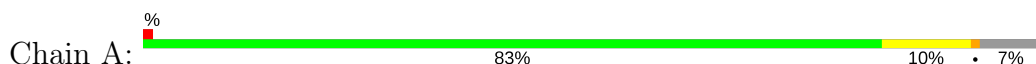
- Molecule 3 is water.

Mol	Chain	Residues	Atoms		ZeroOcc	AltConf
3	A	25	Total	O	0	0
			25	25		
3	B	20	Total	O	0	0
			20	20		
3	C	17	Total	O	0	0
			17	17		
3	D	17	Total	O	0	0
			17	17		

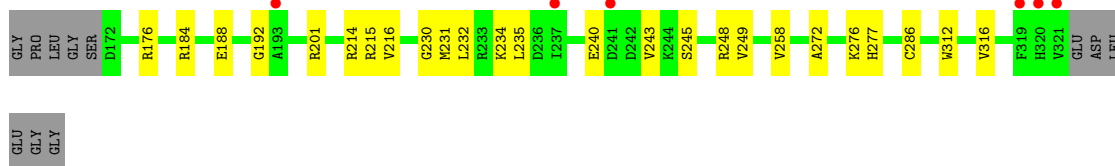
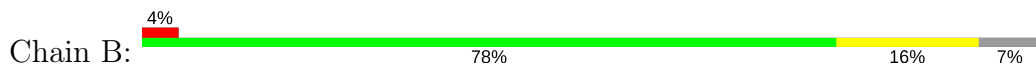
3 Residue-property plots

These plots are drawn for all protein, RNA and DNA chains in the entry. The first graphic for a chain summarises the proportions of the various outlier classes displayed in the second graphic. The second graphic shows the sequence view annotated by issues in geometry and electron density. Residues are color-coded according to the number of geometric quality criteria for which they contain at least one outlier: green = 0, yellow = 1, orange = 2 and red = 3 or more. A red dot above a residue indicates a poor fit to the electron density ($RSRZ > 2$). Stretches of 2 or more consecutive residues without any outlier are shown as a green connector. Residues present in the sample, but not in the model, are shown in grey.

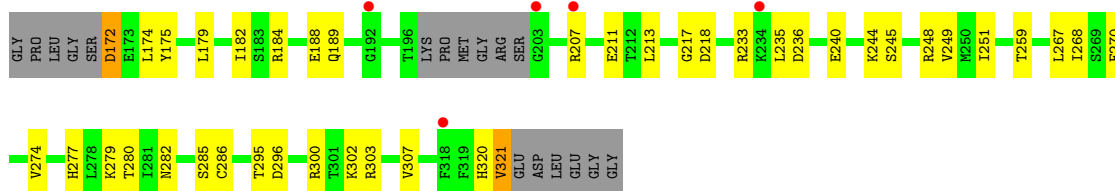
- Molecule 1: Induced myeloid leukemia cell differentiation protein Mcl-1



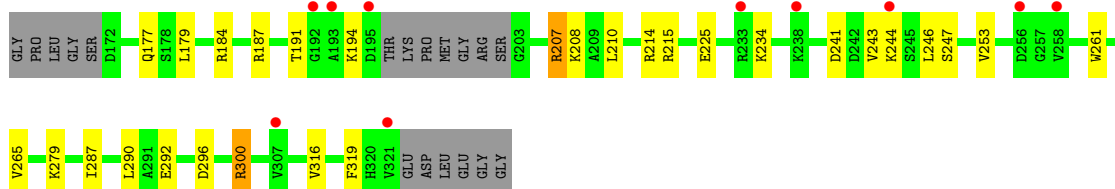
- Molecule 1: Induced myeloid leukemia cell differentiation protein Mcl-1



- Molecule 1: Induced myeloid leukemia cell differentiation protein Mcl-1



- Molecule 1: Induced myeloid leukemia cell differentiation protein Mcl-1



4 Data and refinement statistics

Property	Value	Source
Space group	P 1 21 1	Depositor
Cell constants a, b, c, α , β , γ	38.17Å 133.83Å 58.24Å 90.00° 89.94° 90.00°	Depositor
Resolution (Å)	29.02 – 1.90 29.00 – 1.90	Depositor EDS
% Data completeness (in resolution range)	91.2 (29.02-1.90) 91.1 (29.00-1.90)	Depositor EDS
R_{merge}	(Not available)	Depositor
R_{sym}	0.07	Depositor
$\langle I/\sigma(I) \rangle$ ¹	1.37 (at 1.89Å)	Xtriage
Refinement program	REFMAC 5.7.0032	Depositor
R, R_{free}	0.243 , 0.291 0.242 , 0.289	Depositor DCC
R_{free} test set	2127 reflections (5.35%)	DCC
Wilson B-factor (Å ²)	30.1	Xtriage
Anisotropy	0.566	Xtriage
Bulk solvent k_{sol} (e/Å ³), B_{sol} (Å ²)	0.35 , 29.0	EDS
L-test for twinning ²	$\langle L \rangle = 0.41$, $\langle L^2 \rangle = 0.23$	Xtriage
Estimated twinning fraction	0.396 for h,-k,-l	Xtriage
F_o, F_c correlation	0.95	EDS
Total number of atoms	4954	wwPDB-VP
Average B, all atoms (Å ²)	38.0	wwPDB-VP

Xtriage's analysis on translational NCS is as follows: *The largest off-origin peak in the Patterson function is 5.00% of the height of the origin peak. No significant pseudotranslation is detected.*

¹Intensities estimated from amplitudes.

²Theoretical values of $\langle |L| \rangle$, $\langle L^2 \rangle$ for acentric reflections are 0.5, 0.333 respectively for untwinned datasets, and 0.375, 0.2 for perfectly twinned datasets.

5 Model quality [i](#)

5.1 Standard geometry [i](#)

Bond lengths and bond angles in the following residue types are not validated in this section: LC3

The Z score for a bond length (or angle) is the number of standard deviations the observed value is removed from the expected value. A bond length (or angle) with $|Z| > 5$ is considered an outlier worth inspection. RMSZ is the root-mean-square of all Z scores of the bond lengths (or angles).

Mol	Chain	Bond lengths		Bond angles	
		RMSZ	$\# Z > 5$	RMSZ	$\# Z > 5$
1	A	0.55	0/1228	0.71	0/1651
1	B	0.53	0/1228	0.69	0/1651
1	C	0.48	0/1181	0.67	1/1588 (0.1%)
1	D	0.44	0/1174	0.62	0/1578
All	All	0.50	0/4811	0.68	1/6468 (0.0%)

There are no bond length outliers.

All (1) bond angle outliers are listed below:

Mol	Chain	Res	Type	Atoms	Z	Observed(°)	Ideal(°)
1	C	174	LEU	CA-CB-CG	5.17	127.18	115.30

There are no chirality outliers.

There are no planarity outliers.

5.2 Too-close contacts [i](#)

In the following table, the Non-H and H(model) columns list the number of non-hydrogen atoms and hydrogen atoms in the chain respectively. The H(added) column lists the number of hydrogen atoms added and optimized by MolProbity. The Clashes column lists the number of clashes within the asymmetric unit, whereas Symm-Clashes lists symmetry related clashes.

Mol	Chain	Non-H	H(model)	H(added)	Clashes	Symm-Clashes
1	A	1208	0	1220	9	0
1	B	1208	0	1220	18	0
1	C	1163	0	1169	21	0
1	D	1156	0	1162	21	0
2	A	35	0	20	0	0
2	B	35	0	20	0	0

Continued on next page...

Continued from previous page...

Mol	Chain	Non-H	H(model)	H(added)	Clashes	Symm-Clashes
2	C	35	0	20	1	0
2	D	35	0	20	0	0
3	A	25	0	0	0	0
3	B	20	0	0	0	0
3	C	17	0	0	1	0
3	D	17	0	0	1	0
All	All	4954	0	4851	63	0

The all-atom clashscore is defined as the number of clashes found per 1000 atoms (including hydrogen atoms). The all-atom clashscore for this structure is 6.

All (63) close contacts within the same asymmetric unit are listed below, sorted by their clash magnitude.

Atom-1	Atom-2	Interatomic distance (Å)	Clash overlap (Å)
1:B:240:GLU:O	1:B:243:VAL:HG22	1.73	0.88
1:C:172:ASP:HB2	1:C:175:TYR:H	1.39	0.87
1:D:210:LEU:HG	1:D:214:ARG:NH1	1.90	0.86
1:D:210:LEU:HG	1:D:214:ARG:HH11	1.49	0.78
1:D:261:TRP:O	1:D:265:VAL:HG23	1.86	0.75
1:D:194:LYS:HD2	1:D:214:ARG:HH21	1.52	0.72
1:C:251:ILE:HD11	1:C:300:ARG:HH22	1.55	0.71
1:C:184:ARG:O	1:C:188:GLU:HB3	1.92	0.70
1:C:240:GLU:HB3	1:C:286:CYS:SG	2.31	0.69
1:C:303:ARG:O	1:C:307:VAL:HG23	1.93	0.69
1:D:296:ASP:O	1:D:300:ARG:HB2	1.94	0.67
1:B:184:ARG:O	1:B:188:GLU:HG2	1.97	0.65
1:A:250:MET:HG2	1:A:297:VAL:HG11	1.80	0.63
1:C:270:PHE:O	1:C:274:VAL:HG23	1.99	0.62
1:B:201:ARG:HB3	1:D:253:VAL:HG13	1.82	0.61
1:B:245:SER:HB2	1:C:245:SER:HB2	1.82	0.61
1:A:292:GLU:HG3	1:B:258:VAL:HG21	1.81	0.61
1:D:187:ARG:O	1:D:191:THR:HG23	2.01	0.60
1:D:184:ARG:HD2	1:D:210:LEU:HD21	1.85	0.59
1:B:249:VAL:HG21	1:C:248:ARG:HB3	1.84	0.59
1:D:215:ARG:NH1	1:D:319:PHE:O	2.33	0.58
1:C:285:SER:HA	3:C:913:HOH:O	2.03	0.57
1:B:243:VAL:HG11	1:B:286:CYS:HB3	1.87	0.56
1:D:207:ARG:HG3	1:D:207:ARG:HH21	1.71	0.56
1:D:208:LYS:HD3	1:D:316:VAL:HG11	1.88	0.55
1:C:213:LEU:O	1:C:217:GLY:N	2.38	0.55
1:A:299:VAL:O	1:A:303:ARG:HB2	2.08	0.54

Continued on next page...

Continued from previous page...

Atom-1	Atom-2	Interatomic distance (Å)	Clash overlap (Å)
1:D:177:GLN:NE2	3:D:908:HOH:O	2.38	0.53
1:B:230:GLY:O	1:B:234:LYS:HD3	2.10	0.52
1:C:189:GLN:NE2	1:C:218:ASP:OD1	2.45	0.50
1:D:179:LEU:HD11	1:D:292:GLU:HG3	1.93	0.49
1:B:248:ARG:NH1	1:C:236:ASP:O	2.45	0.49
1:D:207:ARG:NH2	1:D:207:ARG:HG3	2.27	0.49
1:C:320:HIS:O	1:C:321:VAL:HB	2.13	0.48
1:B:188:GLU:OE1	1:B:214:ARG:HD3	2.13	0.48
1:C:259:THR:HG23	1:C:302:LYS:HD2	1.95	0.48
1:B:232:LEU:HD21	1:B:277:HIS:CG	2.49	0.48
1:D:234:LYS:O	1:D:234:LYS:HG2	2.14	0.48
1:A:272:ALA:O	1:A:276:LYS:HG3	2.14	0.47
1:D:300:ARG:CZ	1:D:300:ARG:HB3	2.44	0.47
1:D:184:ARG:HD2	1:D:210:LEU:CD2	2.45	0.47
1:C:235:LEU:O	1:C:236:ASP:C	2.53	0.46
1:C:182:ILE:HG12	1:C:268:ILE:HG12	1.97	0.46
1:D:244:LYS:O	1:D:247:SER:HB3	2.16	0.46
1:C:267:LEU:HD12	2:C:501:LC3:H22	1.97	0.46
1:C:296:ASP:O	1:C:300:ARG:HB2	2.15	0.45
1:B:240:GLU:HA	1:B:286:CYS:SG	2.56	0.45
1:C:207:ARG:O	1:C:211:GLU:HG3	2.16	0.45
1:A:292:GLU:CG	1:B:258:VAL:HG21	2.47	0.45
1:B:272:ALA:O	1:B:276:LYS:HG3	2.17	0.45
1:D:243:VAL:O	1:D:246:LEU:HB2	2.17	0.44
1:B:312:TRP:O	1:B:316:VAL:HG23	2.18	0.44
1:C:277:HIS:O	1:C:280:THR:OG1	2.29	0.43
1:B:188:GLU:O	1:B:192:GLY:N	2.48	0.43
1:A:188:GLU:OE1	1:A:214:ARG:HD3	2.19	0.43
1:A:261:TRP:CZ3	1:A:315:PHE:HB2	2.53	0.43
1:A:180:GLU:HG3	1:A:184:ARG:NH1	2.34	0.42
1:D:208:LYS:HB3	1:D:316:VAL:HG11	2.01	0.42
1:D:287:ILE:O	1:D:290:LEU:HB3	2.20	0.42
1:C:179:LEU:HB2	1:C:295:THR:HG21	2.02	0.41
1:A:239:ASN:OD1	1:A:241:ASP:HB2	2.21	0.41
1:B:231:MET:O	1:B:235:LEU:HG	2.20	0.41
1:B:215:ARG:CZ	1:B:215:ARG:HB3	2.52	0.40

There are no symmetry-related clashes.

5.3 Torsion angles

5.3.1 Protein backbone

In the following table, the Percentiles column shows the percent Ramachandran outliers of the chain as a percentile score with respect to all X-ray entries followed by that with respect to entries of similar resolution.

The Analysed column shows the number of residues for which the backbone conformation was analysed, and the total number of residues.

Mol	Chain	Analysed	Favoured	Allowed	Outliers	Percentiles	
1	A	148/161 (92%)	144 (97%)	4 (3%)	0	100	100
1	B	148/161 (92%)	144 (97%)	4 (3%)	0	100	100
1	C	140/161 (87%)	133 (95%)	7 (5%)	0	100	100
1	D	139/161 (86%)	134 (96%)	5 (4%)	0	100	100
All	All	575/644 (89%)	555 (96%)	20 (4%)	0	100	100

There are no Ramachandran outliers to report.

5.3.2 Protein sidechains

In the following table, the Percentiles column shows the percent sidechain outliers of the chain as a percentile score with respect to all X-ray entries followed by that with respect to entries of similar resolution.

The Analysed column shows the number of residues for which the sidechain conformation was analysed, and the total number of residues.

Mol	Chain	Analysed	Rotameric	Outliers	Percentiles	
1	A	131/138 (95%)	128 (98%)	3 (2%)	56	49
1	B	131/138 (95%)	129 (98%)	2 (2%)	70	67
1	C	126/138 (91%)	119 (94%)	7 (6%)	25	13
1	D	125/138 (91%)	120 (96%)	5 (4%)	36	25
All	All	513/552 (93%)	496 (97%)	17 (3%)	43	33

All (17) residues with a non-rotameric sidechain are listed below:

Mol	Chain	Res	Type
1	A	180	GLU
1	A	234	LYS

Continued on next page...

Continued from previous page...

Mol	Chain	Res	Type
1	A	258	VAL
1	B	176	ARG
1	B	216	VAL
1	C	172	ASP
1	C	233	ARG
1	C	244	LYS
1	C	249	VAL
1	C	279	LYS
1	C	282	ASN
1	C	321	VAL
1	D	207	ARG
1	D	225	GLU
1	D	241	ASP
1	D	279	LYS
1	D	300	ARG

Some sidechains can be flipped to improve hydrogen bonding and reduce clashes. All (6) such sidechains are listed below:

Mol	Chain	Res	Type
1	A	283	GLN
1	B	177	GLN
1	B	320	HIS
1	C	177	GLN
1	C	283	GLN
1	D	282	ASN

5.3.3 RNA ⓘ

There are no RNA molecules in this entry.

5.4 Non-standard residues in protein, DNA, RNA chains ⓘ

There are no non-standard protein/DNA/RNA residues in this entry.

5.5 Carbohydrates ⓘ

There are no carbohydrates in this entry.

5.6 Ligand geometry

4 ligands are modelled in this entry.

In the following table, the Counts columns list the number of bonds (or angles) for which Mogul statistics could be retrieved, the number of bonds (or angles) that are observed in the model and the number of bonds (or angles) that are defined in the chemical component dictionary. The Link column lists molecule types, if any, to which the group is linked. The Z score for a bond length (or angle) is the number of standard deviations the observed value is removed from the expected value. A bond length (or angle) with $|Z| > 2$ is considered an outlier worth inspection. RMSZ is the root-mean-square of all Z scores of the bond lengths (or angles).

Mol	Type	Chain	Res	Link	Bond lengths			Bond angles		
					Counts	RMSZ	# $ Z > 2$	Counts	RMSZ	# $ Z > 2$
2	LC3	A	501	-	30,39,39	1.24	4 (13%)	36,55,55	1.20	4 (11%)
2	LC3	B	501	-	30,39,39	1.21	4 (13%)	36,55,55	0.97	1 (2%)
2	LC3	C	501	-	30,39,39	1.16	4 (13%)	36,55,55	1.37	4 (11%)
2	LC3	D	501	-	30,39,39	1.16	3 (10%)	36,55,55	0.97	2 (5%)

In the following table, the Chirals column lists the number of chiral outliers, the number of chiral centers analysed, the number of these observed in the model and the number defined in the chemical component dictionary. Similar counts are reported in the Torsion and Rings columns. '-' means no outliers of that kind were identified.

Mol	Type	Chain	Res	Link	Chirals	Torsions	Rings
2	LC3	A	501	-	-	0/11/19/19	0/5/5/5
2	LC3	B	501	-	-	0/11/19/19	0/5/5/5
2	LC3	C	501	-	-	0/11/19/19	0/5/5/5
2	LC3	D	501	-	-	0/11/19/19	0/5/5/5

All (15) bond length outliers are listed below:

Mol	Chain	Res	Type	Atoms	Z	Observed(Å)	Ideal(Å)
2	D	501	LC3	C11-C12	-2.99	1.34	1.38
2	C	501	LC3	C11-C12	-2.89	1.34	1.38
2	B	501	LC3	C31-C30	-2.85	1.37	1.43
2	A	501	LC3	C11-C12	-2.71	1.34	1.38
2	B	501	LC3	C11-C12	-2.62	1.34	1.38
2	C	501	LC3	C31-C30	-2.52	1.38	1.43
2	A	501	LC3	C31-C30	-2.47	1.38	1.43
2	D	501	LC3	C31-C30	-2.34	1.38	1.43
2	A	501	LC3	C20-C18	-2.12	1.48	1.52
2	B	501	LC3	C20-C18	-2.10	1.48	1.52
2	C	501	LC3	C20-C18	-2.06	1.48	1.52

Continued on next page...

Continued from previous page...

Mol	Chain	Res	Type	Atoms	Z	Observed(Å)	Ideal(Å)
2	C	501	LC3	C10-C11	2.34	1.43	1.38
2	D	501	LC3	C10-C11	2.47	1.43	1.38
2	B	501	LC3	C10-C11	2.76	1.44	1.38
2	A	501	LC3	C10-C11	2.96	1.44	1.38

All (11) bond angle outliers are listed below:

Mol	Chain	Res	Type	Atoms	Z	Observed(°)	Ideal(°)
2	C	501	LC3	C22-O23-C26	-2.57	109.77	117.78
2	A	501	LC3	C6-C9-C12	-2.24	117.42	121.05
2	A	501	LC3	C20-C18-C17	2.13	129.80	127.48
2	D	501	LC3	C35-C31-C30	2.26	120.81	117.89
2	D	501	LC3	C9-C12-N13	2.47	121.78	117.72
2	C	501	LC3	C20-C18-C17	2.69	130.40	127.48
2	A	501	LC3	C9-C12-N13	2.73	122.21	117.72
2	A	501	LC3	C35-C31-C30	2.81	121.52	117.89
2	C	501	LC3	C10-C11-C12	2.86	121.45	118.59
2	B	501	LC3	C9-C12-N13	3.50	123.47	117.72
2	C	501	LC3	C9-C12-N13	4.55	125.19	117.72

There are no chirality outliers.

There are no torsion outliers.

There are no ring outliers.

1 monomer is involved in 1 short contact:

Mol	Chain	Res	Type	Clashes	Symm-Clashes
2	C	501	LC3	1	0

5.7 Other polymers [i](#)

There are no such residues in this entry.

5.8 Polymer linkage issues [i](#)

There are no chain breaks in this entry.

6 Fit of model and data

6.1 Protein, DNA and RNA chains

In the following table, the column labelled ‘#RSRZ> 2’ contains the number (and percentage) of RSRZ outliers, followed by percent RSRZ outliers for the chain as percentile scores relative to all X-ray entries and entries of similar resolution. The OWAB column contains the minimum, median, 95th percentile and maximum values of the occupancy-weighted average B-factor per residue. The column labelled ‘Q< 0.9’ lists the number of (and percentage) of residues with an average occupancy less than 0.9.

Mol	Chain	Analysed	<RSRZ>	#RSRZ>2	OWAB(Å ²)	Q<0.9
1	A	150/161 (93%)	0.23	1 (0%) 87 89	19, 31, 50, 65	0
1	B	150/161 (93%)	0.34	6 (4%) 39 43	16, 36, 56, 76	0
1	C	144/161 (89%)	0.46	5 (3%) 44 48	21, 39, 59, 78	0
1	D	143/161 (88%)	0.64	10 (6%) 17 19	21, 41, 60, 77	0
All	All	587/644 (91%)	0.41	22 (3%) 42 46	16, 37, 59, 78	0

All (22) RSRZ outliers are listed below:

Mol	Chain	Res	Type	RSRZ
1	D	193	ALA	4.8
1	B	320	HIS	4.8
1	D	192	GLY	4.5
1	B	193	ALA	4.2
1	C	318	PHE	3.6
1	C	203	GLY	3.4
1	D	233	ARG	3.1
1	B	321	VAL	2.9
1	D	258	VAL	2.9
1	B	319	PHE	2.8
1	D	307	VAL	2.7
1	A	234	LYS	2.7
1	D	195	ASP	2.6
1	D	321	VAL	2.6
1	C	234	LYS	2.5
1	B	241	ASP	2.5
1	D	238	LYS	2.4
1	D	244	LYS	2.4
1	C	207	ARG	2.1
1	B	237	ILE	2.1
1	D	256	ASP	2.1
1	C	192	GLY	2.0

6.2 Non-standard residues in protein, DNA, RNA chains [i](#)

There are no non-standard protein/DNA/RNA residues in this entry.

6.3 Carbohydrates [i](#)

There are no carbohydrates in this entry.

6.4 Ligands [i](#)

In the following table, the Atoms column lists the number of modelled atoms in the group and the number defined in the chemical component dictionary. LLDF column lists the quality of electron density of the group with respect to its neighbouring residues in protein, DNA or RNA chains. The B-factors column lists the minimum, median, 95th percentile and maximum values of B factors of atoms in the group. The column labelled 'Q< 0.9' lists the number of atoms with occupancy less than 0.9.

Mol	Type	Chain	Res	Atoms	RSCC	RSR	LLDF	B-factors(\AA^2)	Q<0.9
2	LC3	C	501	35/35	0.93	0.12	0.32	19,27,31,33	0
2	LC3	A	501	35/35	0.94	0.11	-0.18	17,30,43,60	0
2	LC3	D	501	35/35	0.93	0.12	-0.59	23,32,39,43	0
2	LC3	B	501	35/35	0.95	0.10	-0.75	22,33,45,51	0

6.5 Other polymers [i](#)

There are no such residues in this entry.