



# Full wwPDB X-ray Structure Validation Report ⓘ

Nov 6, 2017 – 07:14 PM EST

PDB ID : 5WKP  
Title : Crystal Structure of the Human mitochondrial Cysteine Desulfurase in complex with ISD11 and Iron-Sulfur Cluster Scaffold Protein ISCU1, and E. coli ACP1 protein at 3.15Å  
Authors : Boniecki, M.T.; Cygler, M.  
Deposited on : unknown  
Resolution : 3.15 Å(reported)

This is a Full wwPDB X-ray Structure Validation Report for a publicly released PDB entry.

We welcome your comments at [validation@mail.wwpdb.org](mailto:validation@mail.wwpdb.org)

A user guide is available at

<http://wwpdb.org/validation/2016/XrayValidationReportHelp>

with specific help available everywhere you see the ⓘ symbol.

---

The following versions of software and data (see [references ⓘ](#)) were used in the production of this report:

MolProbity : 4.02b-467  
Mogul : 1.7.2 (RC1), CSD as538be (2017)  
Xtriage (Phenix) : 1.9-1692  
EDS : rb-20030345  
Percentile statistics : 20161228.v01 (using entries in the PDB archive December 28th 2016)  
Refmac : 5.8.0135  
CCP4 : 6.5.0  
Ideal geometry (proteins) : Engh & Huber (2001)  
Ideal geometry (DNA, RNA) : Parkinson et al. (1996)  
Validation Pipeline (wwPDB-VP) : rb-20030345

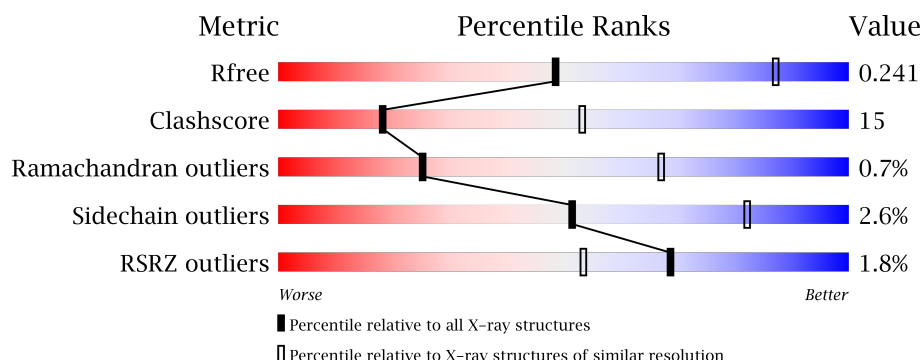
# 1 Overall quality at a glance

The following experimental techniques were used to determine the structure:

## *X-RAY DIFFRACTION*

The reported resolution of this entry is 3.15 Å.

Percentile scores (ranging between 0-100) for global validation metrics of the entry are shown in the following graphic. The table shows the number of entries on which the scores are based.






Metric	Whole archive (#Entries)	Similar resolution (#Entries, resolution range(Å))
$R_{free}$	100719	1259 (3.20-3.12)
Clashscore	112137	1397 (3.20-3.12)
Ramachandran outliers	110173	1368 (3.20-3.12)
Sidechain outliers	110143	1367 (3.20-3.12)
RSRZ outliers	101464	1264 (3.20-3.12)

The table below summarises the geometric issues observed across the polymeric chains and their fit to the electron density. The red, orange, yellow and green segments on the lower bar indicate the fraction of residues that contain outliers for  $\geq 3$ , 2, 1 and 0 types of geometric quality criteria. A grey segment represents the fraction of residues that are not modelled. The numeric value for each fraction is indicated below the corresponding segment, with a dot representing fractions  $\leq 5\%$ . The upper red bar (where present) indicates the fraction of residues that have poor fit to the electron density. The numeric value is given above the bar.

Mol	Chain	Length	Quality of chain
1	A	406	<div> <div style="width: 69%;"></div> <div style="width: 28%;"></div> <div style="width: 3%;"></div> </div>
1	E	406	<div> <div style="width: 72%;"></div> <div style="width: 25%;"></div> <div style="width: 3%;"></div> </div>
2	B	91	<div> <div style="width: 60%;"></div> <div style="width: 27%;"></div> <div style="width: 11%;"></div> </div>
2	F	91	<div> <div style="width: 62%;"></div> <div style="width: 27%;"></div> <div style="width: 10%;"></div> </div>
3	C	77	<div> <div style="width: 69%;"></div> <div style="width: 23%;"></div> <div style="width: 6%;"></div> </div>

*Continued on next page...*

*Continued from previous page...*

Mol	Chain	Length	Quality of chain
3	G	77	
4	D	150	
4	H	150	

The following table lists non-polymeric compounds, carbohydrate monomers and non-standard residues in protein, DNA, RNA chains that are outliers for geometric or electron-density-fit criteria:

Mol	Type	Chain	Res	Chirality	Geometry	Clashes	Electron density
5	PLP	A	501	-	-	-	X

## 2 Entry composition

There are 6 unique types of molecules in this entry. The entry contains 9898 atoms, of which 12 are hydrogens and 0 are deuteriums.

In the tables below, the ZeroOcc column contains the number of atoms modelled with zero occupancy, the AltConf column contains the number of residues with at least one atom in alternate conformation and the Trace column contains the number of residues modelled with at most 2 atoms.

- Molecule 1 is a protein called Cysteine desulfurase, mitochondrial.

Mol	Chain	Residues	Atoms					ZeroOcc	AltConf	Trace
1	A	396	Total	C	N	O	S	0	0	0
			2926	1853	503	552	18			
1	E	398	Total	C	N	O	S	0	0	0
			3001	1893	519	570	19			

There are 8 discrepancies between the modelled and reference sequences:

Chain	Residue	Modelled	Actual	Comment	Reference
A	52	MET	-	initiating methionine	UNP Q9Y697
A	53	GLY	-	expression tag	UNP Q9Y697
A	54	SER	-	expression tag	UNP Q9Y697
A	55	SER	-	expression tag	UNP Q9Y697
E	52	MET	-	initiating methionine	UNP Q9Y697
E	53	GLY	-	expression tag	UNP Q9Y697
E	54	SER	-	expression tag	UNP Q9Y697
E	55	SER	-	expression tag	UNP Q9Y697

- Molecule 2 is a protein called LYR motif-containing protein 4.

Mol	Chain	Residues	Atoms					ZeroOcc	AltConf	Trace
2	B	81	Total	C	N	O	S	0	0	0
			633	401	117	114	1			
2	F	82	Total	C	N	O	S	0	0	0
			660	418	122	119	1			

There are 2 discrepancies between the modelled and reference sequences:

Chain	Residue	Modelled	Actual	Comment	Reference
B	11	ALA	SER	variant	UNP Q9HD34
F	11	ALA	SER	variant	UNP Q9HD34

- Molecule 3 is a protein called Acyl carrier protein.

Mol	Chain	Residues	Atoms					ZeroOcc	AltConf	Trace
3	C	72	Total 454	C 288	N 76	O 89	S 1	0	0	0
3	G	71	Total 506	C 320	N 78	O 107	S 1	0	0	0

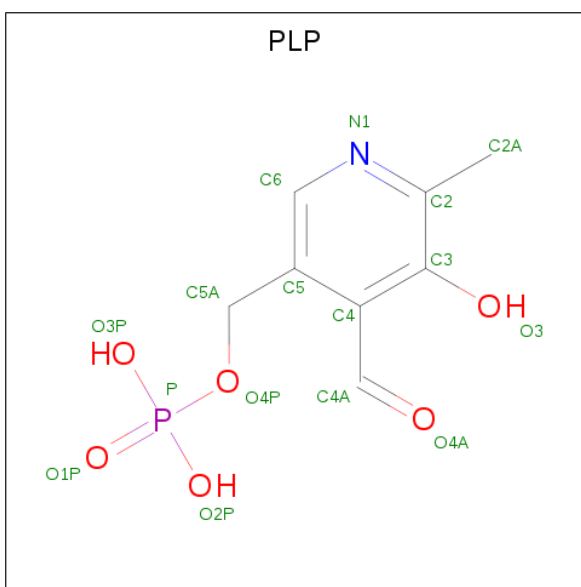
- Molecule 4 is a protein called Iron-sulfur cluster assembly enzyme ISCU, mitochondrial.

Mol	Chain	Residues	Atoms					ZeroOcc	AltConf	Trace
4	D	118	Total 699	C 434	N 125	O 137	S 3	0	0	0
4	H	126	Total 909	C 572	N 154	O 178	S 5	0	0	0

There are 18 discrepancies between the modelled and reference sequences:

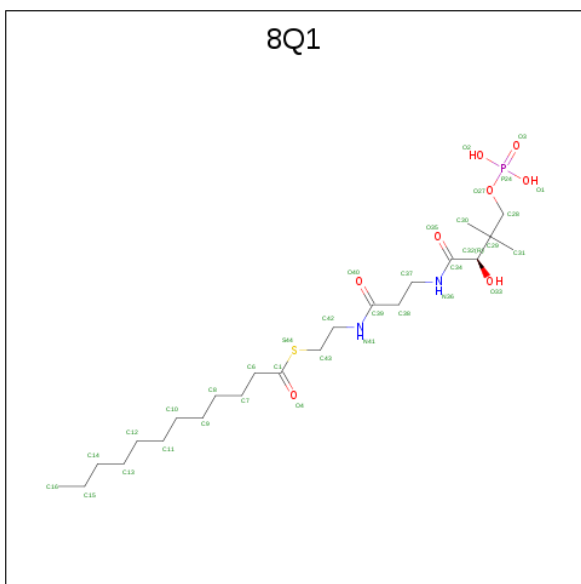
Chain	Residue	Modelled	Actual	Comment	Reference
D	115	ILE	MET	engineered mutation	UNP Q9H1K1
D	143	LEU	-	expression tag	UNP Q9H1K1
D	144	GLU	-	expression tag	UNP Q9H1K1
D	145	HIS	-	expression tag	UNP Q9H1K1
D	146	HIS	-	expression tag	UNP Q9H1K1
D	147	HIS	-	expression tag	UNP Q9H1K1
D	148	HIS	-	expression tag	UNP Q9H1K1
D	149	HIS	-	expression tag	UNP Q9H1K1
D	150	HIS	-	expression tag	UNP Q9H1K1
H	115	ILE	MET	engineered mutation	UNP Q9H1K1
H	143	LEU	-	expression tag	UNP Q9H1K1
H	144	GLU	-	expression tag	UNP Q9H1K1
H	145	HIS	-	expression tag	UNP Q9H1K1
H	146	HIS	-	expression tag	UNP Q9H1K1
H	147	HIS	-	expression tag	UNP Q9H1K1
H	148	HIS	-	expression tag	UNP Q9H1K1
H	149	HIS	-	expression tag	UNP Q9H1K1
H	150	HIS	-	expression tag	UNP Q9H1K1

- Molecule 5 is PYRIDOXAL-5'-PHOSPHATE (three-letter code: PLP) (formula: C<sub>8</sub>H<sub>10</sub>NO<sub>6</sub>P).



Mol	Chain	Residues	Atoms						ZeroOcc	AltConf
5	A	1	Total 21	C 8	H 6	N 1	O 5	P 1	0	0
5	E	1	Total 21	C 8	H 6	N 1	O 5	P 1	0	0

- Molecule 6 is S-[2-({N-[(2R)-2-hydroxy-3,3-dimethyl-4-(phosphonoxy)butanoyl]-beta-alanyl}amino)ethyl] dodecanethioate (three-letter code: 8Q1) (formula: C<sub>23</sub>H<sub>45</sub>N<sub>2</sub>O<sub>8</sub>PS).



Mol	Chain	Residues	Atoms						ZeroOcc	AltConf
6	C	1	Total	C	N	O	P	S	0	0
			34	23	2	7	1	1		

*Continued on next page...*

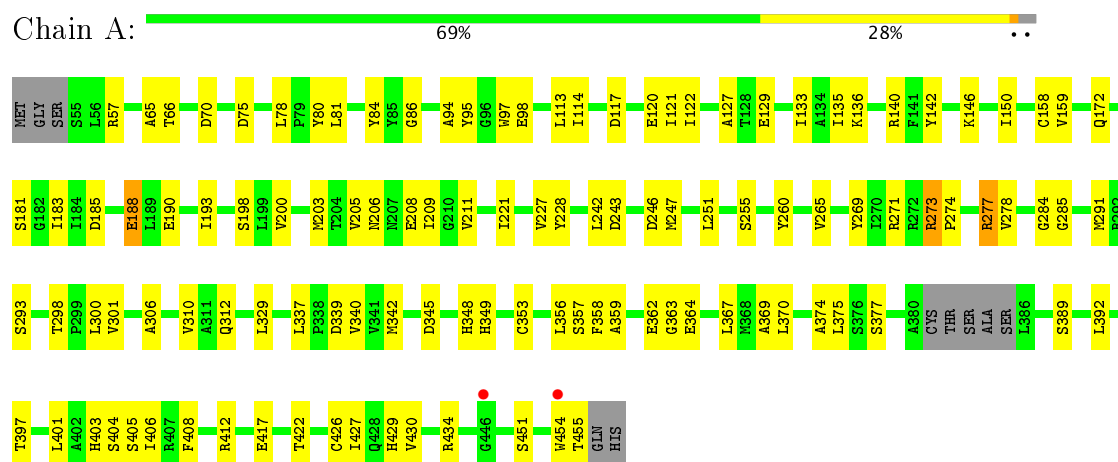
*Continued from previous page...*

Mol	Chain	Residues	Atoms						ZeroOcc	AltConf
6	G	1	Total	C	N	O	P	S	0	0
			34	23	2	7	1	1		

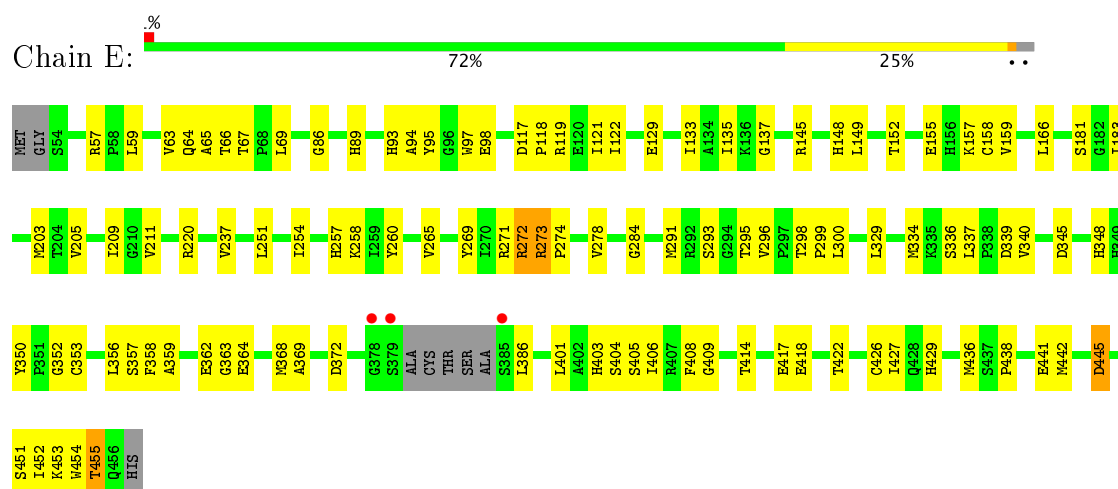
### 3 Residue-property plots [i](#)

These plots are drawn for all protein, RNA and DNA chains in the entry. The first graphic for a chain summarises the proportions of the various outlier classes displayed in the second graphic. The second graphic shows the sequence view annotated by issues in geometry and electron density. Residues are color-coded according to the number of geometric quality criteria for which they contain at least one outlier: green = 0, yellow = 1, orange = 2 and red = 3 or more. A red dot above a residue indicates a poor fit to the electron density ( $RSRZ > 2$ ). Stretches of 2 or more consecutive residues without any outlier are shown as a green connector. Residues present in the sample, but not in the model, are shown in grey.

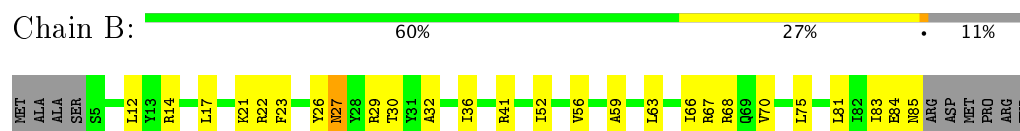
#### • Molecule 1: Cysteine desulfurase, mitochondrial



#### • Molecule 1: Cysteine desulfurase, mitochondrial

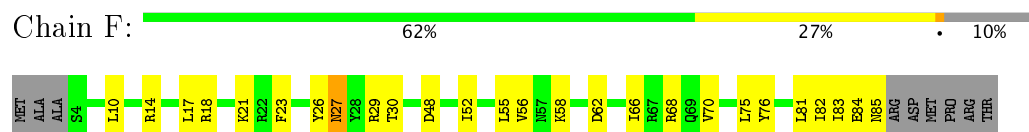


#### • Molecule 2: LYR motif-containing protein 4

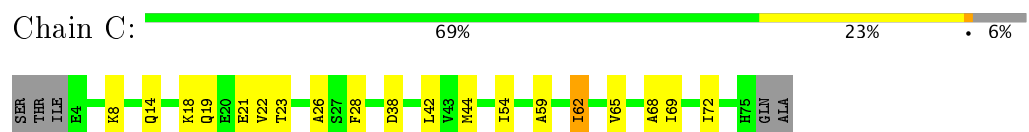




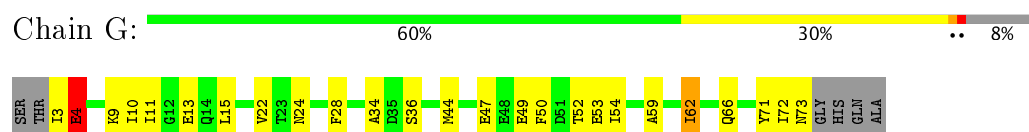
- Molecule 2: LYR motif-containing protein 4



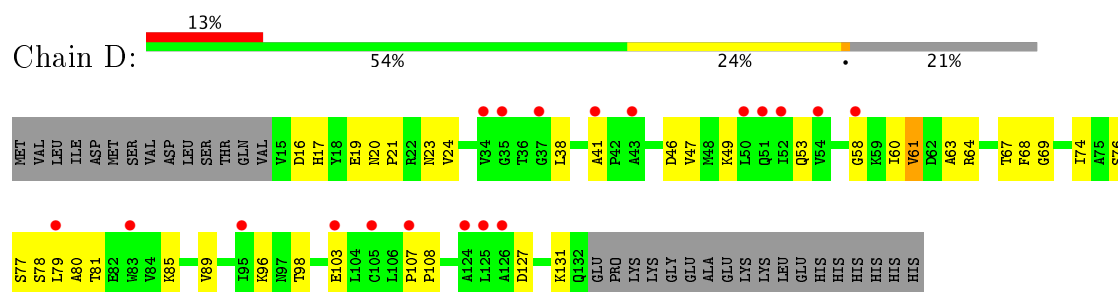
- Molecule 3: Acyl carrier protein



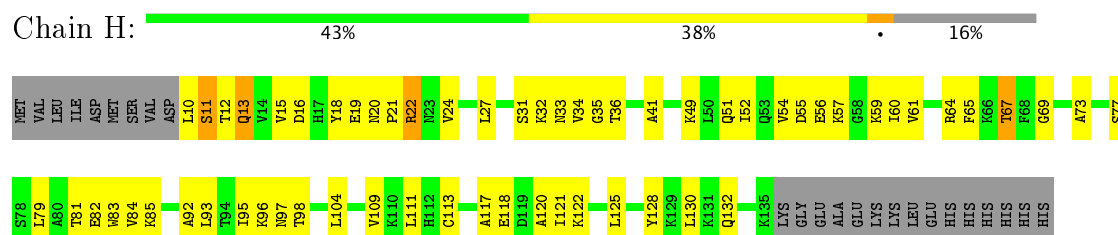
- Molecule 3: Acyl carrier protein



- Molecule 4: Iron-sulfur cluster assembly enzyme ISCU, mitochondrial



- Molecule 4: Iron-sulfur cluster assembly enzyme ISCU, mitochondrial



## 4 Data and refinement statistics

Property	Value	Source
Space group	P 21 21 21	Depositor
Cell constants a, b, c, $\alpha$ , $\beta$ , $\gamma$	98.36Å 123.29Å 151.72Å 90.00° 90.00° 90.00°	Depositor
Resolution (Å)	49.39 – 3.15 49.39 – 3.15	Depositor EDS
% Data completeness (in resolution range)	99.8 (49.39-3.15) 99.8 (49.39-3.15)	Depositor EDS
$R_{merge}$	(Not available)	Depositor
$R_{sym}$	(Not available)	Depositor
$\langle I/\sigma(I) \rangle$ <sup>1</sup>	1.90 (at 3.12Å)	Xtriage
Refinement program	PHENIX 1.11.1 _2575	Depositor
R, $R_{free}$	0.186 , 0.242 0.187 , 0.241	Depositor DCC
$R_{free}$ test set	1998 reflections (6.15%)	DCC
Wilson B-factor (Å <sup>2</sup> )	79.2	Xtriage
Anisotropy	0.638	Xtriage
Bulk solvent $k_{sol}$ (e/Å <sup>3</sup> ), $B_{sol}$ (Å <sup>2</sup> )	0.30 , 61.9	EDS
L-test for twinning <sup>2</sup>	$\langle  L  \rangle = 0.48$ , $\langle L^2 \rangle = 0.32$	Xtriage
Estimated twinning fraction	No twinning to report.	Xtriage
$F_o, F_c$ correlation	0.94	EDS
Total number of atoms	9898	wwPDB-VP
Average B, all atoms (Å <sup>2</sup> )	89.0	wwPDB-VP

Xtriage's analysis on translational NCS is as follows: *The largest off-origin peak in the Patterson function is 3.44% of the height of the origin peak. No significant pseudotranslation is detected.*

<sup>1</sup>Intensities estimated from amplitudes.

<sup>2</sup>Theoretical values of  $\langle |L| \rangle$ ,  $\langle L^2 \rangle$  for acentric reflections are 0.5, 0.333 respectively for untwinned datasets, and 0.375, 0.2 for perfectly twinned datasets.

## 5 Model quality [i](#)

### 5.1 Standard geometry [i](#)

Bond lengths and bond angles in the following residue types are not validated in this section: 8Q1, PLP

The Z score for a bond length (or angle) is the number of standard deviations the observed value is removed from the expected value. A bond length (or angle) with  $|Z| > 5$  is considered an outlier worth inspection. RMSZ is the root-mean-square of all Z scores of the bond lengths (or angles).

Mol	Chain	Bond lengths		Bond angles	
		RMSZ	# Z  >5	RMSZ	# Z  >5
1	A	0.27	0/2982	0.44	0/4060
1	E	0.27	0/3057	0.45	0/4148
2	B	0.25	0/641	0.39	0/868
2	F	0.25	0/668	0.38	0/899
3	C	0.23	0/456	0.39	0/626
3	G	0.25	0/509	0.41	0/694
4	D	0.24	0/706	0.43	0/975
4	H	0.24	0/921	0.45	0/1252
All	All	0.26	0/9940	0.43	0/13522

There are no bond length outliers.

There are no bond angle outliers.

There are no chirality outliers.

There are no planarity outliers.

### 5.2 Too-close contacts [i](#)

In the following table, the Non-H and H(model) columns list the number of non-hydrogen atoms and hydrogen atoms in the chain respectively. The H(added) column lists the number of hydrogen atoms added and optimized by MolProbity. The Clashes column lists the number of clashes within the asymmetric unit, whereas Symm-Clashes lists symmetry related clashes.

Mol	Chain	Non-H	H(model)	H(added)	Clashes	Symm-Clashes
1	A	2926	0	2807	81	0
1	E	3001	0	2914	82	0
2	B	633	0	609	17	0
2	F	660	0	659	23	0
3	C	454	0	368	15	0

*Continued on next page...*

*Continued from previous page...*

Mol	Chain	Non-H	H(model)	H(added)	Clashes	Symm-Clashes
3	G	506	0	464	24	0
4	D	699	0	521	26	0
4	H	909	0	904	51	0
5	A	15	6	7	1	0
5	E	15	6	7	0	0
6	C	34	0	0	1	0
6	G	34	0	0	2	0
All	All	9886	12	9260	288	0

The all-atom clashscore is defined as the number of clashes found per 1000 atoms (including hydrogen atoms). The all-atom clashscore for this structure is 15.

All (288) close contacts within the same asymmetric unit are listed below, sorted by their clash magnitude.

Atom-1	Atom-2	Interatomic distance (Å)	Clash overlap (Å)
1:A:181:SER:HB2	1:A:345:ASP:HB2	1.39	0.99
1:E:209:ILE:HG13	1:E:211:VAL:HG23	1.49	0.94
1:A:209:ILE:HG13	1:A:211:VAL:HG23	1.54	0.90
4:H:97:ASN:N	4:H:118:GLU:OE1	2.08	0.87
1:A:277:ARG:HB3	1:A:277:ARG:HH21	1.42	0.84
1:A:208:GLU:OE1	1:A:389:SER:OG	1.97	0.83
1:E:337:LEU:HD11	1:E:427:ILE:HA	1.61	0.83
1:A:377:SER:OG	1:A:405:SER:O	1.97	0.81
3:C:19:GLN:O	3:C:22:VAL:HG22	1.82	0.80
2:F:14:ARG:HG2	2:F:18:ARG:HH21	1.47	0.80
6:C:301:8Q1:O40	6:C:301:8Q1:N36	2.14	0.79
3:G:52:THR:HG22	3:G:53:GLU:H	1.49	0.78
3:G:10:ILE:HD11	3:G:49:GLU:CB	2.15	0.77
4:H:92:ALA:O	4:H:95:ILE:HG12	1.85	0.77
3:G:24:ASN:HB3	3:G:66:GLN:OE1	1.84	0.76
1:E:271:ARG:HD3	1:E:274:PRO:HD2	1.66	0.76
1:A:271:ARG:HD3	1:A:274:PRO:HD2	1.70	0.74
4:H:60:ILE:HD12	4:H:84:VAL:HG22	1.70	0.74
4:H:32:LYS:O	4:H:132:GLN:NE2	2.20	0.74
1:A:127:ALA:HB2	1:A:255:SER:HB2	1.69	0.73
3:G:15:LEU:HD22	3:G:34:ALA:HB2	1.71	0.73
1:E:135:ILE:HD11	1:E:159:VAL:HG13	1.70	0.73
1:E:181:SER:HB2	1:E:345:ASP:HB2	1.72	0.72
1:E:454:TRP:O	1:E:455:THR:HG23	1.90	0.72
1:E:362:GLU:OE1	1:E:364:GLU:N	2.23	0.72
1:A:300:LEU:HD11	1:E:300:LEU:HD11	1.73	0.71

*Continued on next page...*

*Continued from previous page...*

Atom-1	Atom-2	Interatomic distance (Å)	Clash overlap (Å)
1:A:362:GLU:OE1	1:A:364:GLU:N	2.22	0.71
4:H:95:ILE:HG13	4:H:121:ILE:HD13	1.73	0.71
1:E:451:SER:O	1:E:453:LYS:N	2.22	0.69
3:C:14:GLN:HG2	3:C:42:LEU:HD13	1.73	0.69
1:A:135:ILE:HD11	1:A:159:VAL:HG13	1.74	0.69
1:E:441:GLU:OE2	4:H:49:LYS:NZ	2.23	0.69
6:G:301:8Q1:O33	6:G:301:8Q1:O27	2.08	0.68
4:D:127:ASP:O	4:D:131:LYS:N	2.26	0.68
4:D:38:LEU:HD23	4:D:49:LYS:HB2	1.75	0.68
1:A:277:ARG:HB3	1:A:277:ARG:NH2	2.09	0.68
2:B:17:LEU:O	2:B:21:LYS:HG2	1.93	0.68
1:E:273:ARG:CB	1:E:274:PRO:HD3	2.26	0.66
1:E:438:PRO:O	1:E:442:MET:HG3	1.94	0.66
1:A:158:CYS:HA	1:E:284:GLY:HA2	1.77	0.65
2:B:27:ASN:N	2:B:27:ASN:OD1	2.28	0.65
1:E:237:VAL:HG21	1:E:254:ILE:HG12	1.77	0.65
4:H:67:THR:HG21	4:H:77:SER:OG	1.96	0.65
1:A:273:ARG:CB	1:A:274:PRO:HD3	2.27	0.65
1:A:363:GLY:N	1:A:403:HIS:O	2.32	0.63
4:H:16:ASP:O	4:H:20:ASN:HB3	1.97	0.63
3:G:54:ILE:HG12	3:G:71:TYR:CE2	2.34	0.63
1:E:135:ILE:CD1	1:E:159:VAL:HG13	2.29	0.62
1:A:337:LEU:HD21	1:A:427:ILE:HG23	1.80	0.62
3:G:10:ILE:HD11	3:G:49:GLU:HB2	1.80	0.62
4:H:60:ILE:CD1	4:H:84:VAL:HG22	2.29	0.62
1:A:454:TRP:HB3	4:D:41:ALA:HB2	1.83	0.61
1:A:86:GLY:HA3	1:A:95:TYR:O	2.00	0.61
2:F:14:ARG:NH2	3:G:47:GLU:OE2	2.33	0.61
1:E:356:LEU:O	1:E:405:SER:HA	2.01	0.61
1:A:306:ALA:O	1:A:310:VAL:HG23	2.01	0.61
1:E:265:VAL:HB	1:E:300:LEU:HB3	1.82	0.61
1:A:362:GLU:HG3	4:D:69:GLY:HA2	1.83	0.60
2:B:68:ARG:HG2	2:F:75:LEU:HD22	1.81	0.60
3:C:54:ILE:HG22	3:C:59:ALA:HB2	1.82	0.60
1:A:356:LEU:O	1:A:405:SER:HA	2.02	0.60
1:E:362:GLU:HG3	4:H:69:GLY:HA2	1.84	0.60
4:D:79:LEU:HD11	4:D:103:GLU:CG	2.31	0.60
1:E:417:GLU:HB3	2:F:83:ILE:HD11	1.83	0.60
3:C:23:THR:OG1	3:C:26:ALA:HB2	2.01	0.59
2:F:10:LEU:HD11	6:G:301:8Q1:C28	2.32	0.59
1:A:285:GLY:HA2	1:E:157:LYS:HG2	1.85	0.59

*Continued on next page...*

*Continued from previous page...*

Atom-1	Atom-2	Interatomic distance (Å)	Clash overlap (Å)
4:H:12:THR:HG23	4:H:13:GLN:HE21	1.67	0.59
2:B:23:PHE:O	2:B:29:ARG:NH1	2.35	0.59
1:A:260:TYR:OH	1:A:412:ARG:N	2.35	0.59
4:D:23:ASN:O	4:D:64:ARG:HA	2.02	0.59
2:F:52:ILE:O	2:F:56:VAL:HG23	2.03	0.59
3:G:54:ILE:HG22	3:G:59:ALA:HB2	1.85	0.59
1:E:334:MET:HG2	1:E:340:VAL:HG13	1.85	0.58
4:H:11:SER:O	4:H:15:VAL:HG23	2.03	0.58
1:A:251:LEU:HA	1:A:269:TYR:O	2.03	0.58
2:B:14:ARG:O	3:C:44:MET:HE1	2.03	0.58
1:A:136:LYS:O	1:A:140:ARG:HG3	2.03	0.57
1:A:183:ILE:HD11	1:A:348:HIS:HB2	1.86	0.57
4:H:20:ASN:N	4:H:21:PRO:HD3	2.18	0.57
1:E:369:ALA:HB1	1:E:429:HIS:CD2	2.39	0.57
1:A:135:ILE:CD1	1:A:159:VAL:HG13	2.34	0.57
1:E:148:HIS:C	1:E:149:LEU:HD12	2.24	0.57
1:A:358:PHE:O	1:A:404:SER:HB3	2.05	0.57
3:C:18:LYS:O	3:C:21:GLU:HG2	2.05	0.57
4:H:13:GLN:H	4:H:13:GLN:HE21	1.53	0.57
1:A:265:VAL:HB	1:A:300:LEU:HB3	1.87	0.57
4:H:93:LEU:O	4:H:122:LYS:HE2	2.05	0.56
3:C:22:VAL:O	3:C:22:VAL:HG23	2.05	0.56
1:E:273:ARG:CB	1:E:274:PRO:CD	2.83	0.56
1:E:363:GLY:N	1:E:403:HIS:O	2.38	0.56
4:H:93:LEU:HD23	4:H:125:LEU:HD12	1.86	0.56
1:A:392:LEU:HD11	1:A:405:SER:OG	2.05	0.56
1:E:336:SER:O	1:E:337:LEU:HD23	2.04	0.56
1:A:94:ALA:O	1:A:98:GLU:HG2	2.06	0.56
1:E:137:GLY:HA3	1:E:278:VAL:HG13	1.86	0.56
1:A:284:GLY:HA2	1:E:158:CYS:HA	1.88	0.56
1:E:334:MET:HG2	1:E:340:VAL:CG1	2.36	0.56
1:A:374:ALA:HB1	1:E:93:HIS:CD2	2.41	0.56
4:H:31:SER:O	4:H:32:LYS:HB3	2.06	0.56
3:G:11:ILE:HD13	3:G:28:PHE:HE1	1.71	0.55
4:D:41:ALA:N	4:D:47:VAL:HG22	2.22	0.55
1:E:94:ALA:O	1:E:98:GLU:HG2	2.06	0.55
1:E:441:GLU:O	1:E:445:ASP:HB2	2.06	0.55
1:A:273:ARG:CB	1:A:274:PRO:CD	2.84	0.55
1:A:430:VAL:O	1:A:434:ARG:HG3	2.07	0.55
2:B:66:ILE:O	2:B:70:VAL:HG23	2.07	0.55
1:A:129:GLU:O	1:A:133:ILE:HG13	2.06	0.54

*Continued on next page...*

*Continued from previous page...*

Atom-1	Atom-2	Interatomic distance (Å)	Clash overlap (Å)
1:E:406:ILE:HD11	1:E:408:PHE:CZ	2.41	0.54
1:A:454:TRP:HZ3	4:D:38:LEU:HD11	1.71	0.54
3:C:59:ALA:HA	3:C:62:ILE:HD13	1.89	0.54
2:F:26:TYR:O	2:F:30:THR:HG23	2.07	0.54
1:A:278:VAL:HG12	1:A:291:MET:HE1	1.89	0.53
1:E:298:THR:HB	1:E:299:PRO:HD3	1.89	0.53
1:E:64:GLN:NE2	1:E:353:CYS:HB2	2.23	0.53
1:E:86:GLY:HA3	1:E:95:TYR:O	2.08	0.53
1:E:357:SER:HA	1:E:404:SER:O	2.08	0.53
1:E:89:HIS:CE1	1:E:296:VAL:HG23	2.43	0.53
4:H:73:ALA:HA	4:H:113:CYS:HB3	1.89	0.53
1:E:220:ARG:HB3	1:E:220:ARG:NH1	2.23	0.53
2:F:18:ARG:HG3	3:G:44:MET:HE3	1.90	0.53
4:H:22:ARG:HG3	4:H:82:GLU:OE1	2.08	0.52
4:D:21:PRO:HB2	4:D:24:VAL:HG23	1.89	0.52
1:A:243:ASP:HB3	1:A:246:ASP:HB2	1.91	0.52
1:A:337:LEU:HD11	1:A:427:ILE:HA	1.92	0.52
1:E:337:LEU:HD21	1:E:427:ILE:HG23	1.91	0.52
1:A:342:MET:HA	1:A:356:LEU:HD23	1.91	0.52
1:E:257:HIS:CE1	1:E:258:LYS:HE3	2.45	0.51
4:H:55:ASP:N	4:H:59:LYS:O	2.36	0.51
2:B:75:LEU:HD22	2:F:68:ARG:HG2	1.92	0.51
4:H:13:GLN:HG3	4:H:104:LEU:HA	1.91	0.51
1:E:386:LEU:CD2	4:H:109:VAL:HG13	2.40	0.51
1:A:114:ILE:HD11	1:A:121:ILE:HD11	1.92	0.51
1:A:422:THR:O	1:A:426:CYS:HB2	2.11	0.51
4:D:107:PRO:HB2	4:D:108:PRO:HD2	1.92	0.51
1:E:63:VAL:HG22	1:E:409:GLY:HA3	1.92	0.51
1:A:374:ALA:HB1	1:E:93:HIS:CG	2.45	0.51
1:A:120:GLU:OE1	1:A:271:ARG:HA	2.11	0.50
1:A:94:ALA:HA	1:A:97:TRP:CE3	2.47	0.50
1:E:358:PHE:O	1:E:404:SER:HB3	2.11	0.50
1:A:242:LEU:HA	1:A:247:MET:HE3	1.92	0.50
2:B:26:TYR:O	2:B:30:THR:HG23	2.11	0.50
4:D:77:SER:O	4:D:81:THR:HG23	2.12	0.50
1:E:340:VAL:O	1:E:340:VAL:HG13	2.12	0.50
2:F:10:LEU:HD21	3:G:36:SER:HB2	1.92	0.50
1:E:368:MET:CE	4:H:10:LEU:HD21	2.41	0.50
1:A:454:TRP:O	1:A:455:THR:HB	2.13	0.49
4:D:19:GLU:OE1	4:D:19:GLU:HA	2.12	0.49
4:H:130:LEU:O	4:H:130:LEU:HD22	2.11	0.49

*Continued on next page...*

*Continued from previous page...*

Atom-1	Atom-2	Interatomic distance (Å)	Clash overlap (Å)
4:H:19:GLU:HA	4:H:19:GLU:OE1	2.12	0.49
4:H:36:THR:HG1	4:H:51:GLN:HE21	1.58	0.49
1:A:121:ILE:C	1:A:122:ILE:HD12	2.33	0.49
1:A:340:VAL:HG13	1:A:340:VAL:O	2.13	0.49
1:E:251:LEU:HA	1:E:269:TYR:O	2.12	0.49
1:A:242:LEU:HA	1:A:247:MET:CE	2.43	0.48
2:B:12:LEU:HD21	2:B:59:ALA:HB3	1.95	0.48
1:E:220:ARG:CZ	1:E:220:ARG:HB3	2.44	0.48
1:E:94:ALA:HA	1:E:97:TRP:CE3	2.48	0.48
1:A:127:ALA:CB	1:A:255:SER:HB2	2.41	0.48
1:A:298:THR:HA	1:A:301:VAL:HG22	1.95	0.48
4:D:21:PRO:HB2	4:D:24:VAL:CG2	2.44	0.48
1:E:129:GLU:O	1:E:133:ILE:HG13	2.13	0.47
1:A:357:SER:HA	1:A:404:SER:O	2.14	0.47
3:C:65:VAL:O	3:C:69:ILE:HG13	2.14	0.47
4:D:76:SER:O	4:D:80:ALA:HB2	2.14	0.47
4:H:60:ILE:HB	4:H:85:LYS:O	2.14	0.47
3:C:68:ALA:O	3:C:72:ILE:HD13	2.14	0.47
1:A:417:GLU:CB	2:B:83:ILE:HD11	2.44	0.47
4:D:38:LEU:HD23	4:D:49:LYS:CB	2.43	0.47
1:E:369:ALA:HB1	1:E:429:HIS:CG	2.50	0.47
1:E:183:ILE:HD11	1:E:348:HIS:HB2	1.95	0.47
1:E:59:LEU:HD21	2:F:83:ILE:HB	1.96	0.47
3:G:50:PHE:CD1	3:G:72:ILE:HD13	2.49	0.47
4:H:79:LEU:HD11	4:H:83:TRP:CE2	2.50	0.47
1:A:80:TYR:CD1	1:A:84:TYR:HB2	2.51	0.46
2:B:26:TYR:CD2	2:B:81:LEU:HD12	2.50	0.46
1:A:367:LEU:CD2	1:A:375:LEU:HB2	2.46	0.46
1:E:152:THR:OG1	1:E:155:GLU:HG2	2.16	0.46
4:H:95:ILE:HG13	4:H:121:ILE:CD1	2.44	0.46
4:H:20:ASN:N	4:H:21:PRO:CD	2.78	0.46
4:D:53:GLN:CB	4:D:61:VAL:HG22	2.45	0.46
4:D:67:THR:HG21	4:D:74:ILE:HA	1.98	0.46
2:F:17:LEU:O	2:F:21:LYS:HG3	2.16	0.46
1:E:155:GLU:OE2	1:E:203:MET:HG2	2.16	0.46
4:H:32:LYS:HG3	4:H:32:LYS:O	2.15	0.46
1:A:206:ASN:OD1	1:A:209:ILE:HG12	2.16	0.45
1:E:386:LEU:HD22	4:H:109:VAL:HG13	1.98	0.45
4:H:52:ILE:HD11	4:H:125:LEU:HD23	1.98	0.45
4:H:54:VAL:HB	4:H:128:TYR:CE1	2.52	0.45
1:E:339:ASP:HB3	1:E:359:ALA:CB	2.46	0.45

*Continued on next page...*



*Continued from previous page...*

Atom-1	Atom-2	Interatomic distance (Å)	Clash overlap (Å)
1:E:369:ALA:HB2	4:H:18:TYR:OH	2.17	0.45
1:E:67:THR:HB	1:E:260:TYR:CD1	2.51	0.45
3:G:22:VAL:HG12	3:G:22:VAL:O	2.16	0.45
4:H:60:ILE:O	4:H:85:LYS:O	2.35	0.45
1:A:65:ALA:O	1:A:66:THR:HB	2.16	0.45
1:A:113:LEU:HD13	1:A:312:GLN:HB2	1.99	0.45
1:A:370:LEU:HD13	1:A:375:LEU:CD1	2.47	0.45
4:D:20:ASN:N	4:D:21:PRO:HD3	2.32	0.45
4:D:46:ASP:HA	4:D:68:PHE:O	2.17	0.45
2:F:27:ASN:OD1	2:F:27:ASN:N	2.31	0.45
4:H:34:VAL:HA	4:H:52:ILE:O	2.17	0.45
2:F:84:GLU:O	2:F:85:ASN:HB2	2.16	0.44
4:H:65:PHE:HB3	4:H:81:THR:HG21	1.98	0.44
1:A:98:GLU:CD	1:E:57:ARG:HH12	2.21	0.44
2:F:55:LEU:O	2:F:58:LYS:HG2	2.18	0.44
1:A:300:LEU:HD11	1:E:300:LEU:CD1	2.45	0.44
1:A:329:LEU:HD23	1:A:329:LEU:C	2.37	0.44
4:H:31:SER:C	4:H:33:ASN:H	2.19	0.44
1:E:278:VAL:HB	1:E:291:MET:HE3	2.00	0.44
1:E:422:THR:O	1:E:426:CYS:HB2	2.17	0.44
1:E:121:ILE:C	1:E:122:ILE:HD12	2.38	0.44
1:E:65:ALA:O	1:E:66:THR:HB	2.17	0.44
2:F:18:ARG:HA	3:G:44:MET:HE1	2.00	0.44
4:H:31:SER:HB3	4:H:34:VAL:HG23	1.99	0.44
1:A:57:ARG:HH12	1:E:98:GLU:CD	2.21	0.44
3:G:10:ILE:HG22	3:G:11:ILE:N	2.32	0.44
3:G:4:GLU:OE1	3:G:4:GLU:HA	2.17	0.44
2:B:84:GLU:O	2:B:85:ASN:HB2	2.17	0.44
1:E:339:ASP:HB3	1:E:359:ALA:HB3	1.98	0.44
1:A:185:ASP:HB3	1:A:188:GLU:HB2	1.99	0.43
4:D:58:GLY:O	4:D:89:VAL:HG23	2.18	0.43
1:E:350:TYR:CE2	1:E:352:GLY:HA3	2.53	0.43
1:A:117:ASP:HB3	1:A:120:GLU:HG3	2.00	0.43
1:A:78:LEU:HD23	1:A:81:LEU:HD12	2.00	0.43
4:H:130:LEU:O	4:H:130:LEU:HD13	2.18	0.43
4:H:27:LEU:HD21	4:H:64:ARG:HG2	2.00	0.43
2:B:52:ILE:O	2:B:56:VAL:HG23	2.18	0.43
2:B:63:LEU:HD21	2:B:67:ARG:NH2	2.33	0.43
1:E:372:ASP:HB3	2:F:82:ILE:HD12	2.01	0.43
3:G:4:GLU:OE2	3:G:73:ASN:ND2	2.51	0.43
1:A:142:TYR:CZ	1:A:228:TYR:HE2	2.36	0.43

*Continued on next page...*

*Continued from previous page...*

Atom-1	Atom-2	Interatomic distance (Å)	Clash overlap (Å)
5:A:501:PLP:O3P	1:E:295:THR:HB	2.19	0.43
1:E:358:PHE:N	1:E:404:SER:O	2.50	0.43
1:E:436:MET:HG2	4:H:24:VAL:HG11	2.01	0.43
3:G:11:ILE:HD13	3:G:28:PHE:CE1	2.53	0.43
4:H:52:ILE:CD1	4:H:125:LEU:HD23	2.49	0.43
3:C:28:PHE:HE2	3:C:62:ILE:HG22	1.84	0.43
4:D:17:HIS:HB3	4:D:78:SER:CB	2.49	0.43
1:E:203:MET:HE2	1:E:205:VAL:O	2.18	0.43
2:F:48:ASP:O	2:F:52:ILE:HG13	2.18	0.43
1:A:203:MET:HE2	1:A:205:VAL:O	2.19	0.43
1:E:414:THR:HA	1:E:418:GLU:OE1	2.18	0.43
4:H:35:GLY:O	4:H:51:GLN:HA	2.19	0.42
2:B:32:ALA:O	2:B:36:ILE:HG13	2.19	0.42
4:D:23:ASN:CB	4:D:63:ALA:O	2.67	0.42
4:H:31:SER:CB	4:H:34:VAL:HG23	2.49	0.42
1:A:75:ASP:OD1	2:F:76:TYR:OH	2.15	0.42
1:A:406:ILE:HD11	1:A:408:PHE:CZ	2.54	0.42
1:E:329:LEU:HD23	1:E:329:LEU:C	2.40	0.42
1:A:339:ASP:HB3	1:A:359:ALA:CB	2.50	0.42
2:B:41:ARG:NH2	3:C:38:ASP:OD1	2.52	0.42
3:G:52:THR:HG22	3:G:53:GLU:N	2.26	0.42
1:A:150:ILE:HD11	1:A:193:ILE:HA	2.00	0.42
1:A:70:ASP:OD2	1:A:412:ARG:NH2	2.53	0.42
1:A:369:ALA:HB1	1:A:429:HIS:CG	2.54	0.42
1:E:357:SER:HB3	1:E:401:LEU:HD22	2.02	0.42
3:G:10:ILE:O	3:G:13:GLU:HG2	2.18	0.42
4:D:16:ASP:O	4:D:20:ASN:HB3	2.20	0.42
1:E:284:GLY:HA3	1:E:293:SER:HB3	2.02	0.42
1:A:190:GLU:HG2	1:A:221:ILE:HG23	2.01	0.42
1:A:278:VAL:CG1	1:A:291:MET:HE1	2.50	0.42
1:A:349:HIS:NE2	1:A:353:CYS:O	2.53	0.42
3:G:11:ILE:HG23	3:G:15:LEU:HD12	2.02	0.42
3:C:8:LYS:O	3:C:19:GLN:HG2	2.21	0.41
1:E:454:TRP:HB3	4:H:41:ALA:HB2	2.02	0.41
4:D:63:ALA:O	4:D:64:ARG:HD3	2.20	0.41
2:F:62:ASP:O	2:F:66:ILE:HG13	2.21	0.41
4:H:65:PHE:CE1	4:H:67:THR:HG23	2.54	0.41
4:H:56:GLU:HG3	4:H:57:LYS:HG3	2.01	0.41
1:E:166:LEU:HD23	1:E:166:LEU:HA	1.88	0.41
3:G:62:ILE:O	3:G:62:ILE:HG22	2.20	0.41
4:D:38:LEU:O	4:D:38:LEU:HD13	2.20	0.41

*Continued on next page...*

Continued from previous page...

Atom-1	Atom-2	Interatomic distance (Å)	Clash overlap (Å)
3:G:10:ILE:HD11	3:G:49:GLU:HB3	1.97	0.41
2:B:22:ARG:HB2	2:B:70:VAL:HG11	2.02	0.41
3:G:50:PHE:CG	3:G:72:ILE:HD13	2.56	0.41
1:A:200:VAL:HG23	1:A:227:VAL:HG11	2.03	0.41
4:H:117:ALA:O	4:H:120:ALA:HB3	2.21	0.41
1:A:146:LYS:CB	1:A:198:SER:HB3	2.51	0.41
3:C:65:VAL:HG12	3:C:69:ILE:CD1	2.51	0.41
1:E:119:ARG:HD2	1:E:272:ARG:HH11	1.86	0.41
2:F:23:PHE:HB2	2:F:29:ARG:HB2	2.03	0.41
4:D:60:ILE:O	4:D:85:LYS:O	2.39	0.40
2:F:66:ILE:O	2:F:70:VAL:HG23	2.21	0.40
4:H:27:LEU:HD21	4:H:64:ARG:CG	2.51	0.40
3:C:65:VAL:HG12	3:C:69:ILE:HD11	2.03	0.40
2:F:26:TYR:CD2	2:F:81:LEU:HD12	2.56	0.40
1:A:284:GLY:HA3	1:A:293:SER:HB3	2.02	0.40
1:E:117:ASP:OD1	1:E:118:PRO:HD2	2.21	0.40

There are no symmetry-related clashes.

## 5.3 Torsion angles ⓘ

### 5.3.1 Protein backbone ⓘ

In the following table, the Percentiles column shows the percent Ramachandran outliers of the chain as a percentile score with respect to all X-ray entries followed by that with respect to entries of similar resolution.

The Analysed column shows the number of residues for which the backbone conformation was analysed, and the total number of residues.

Mol	Chain	Analysed	Favoured	Allowed	Outliers	Percentiles	
1	A	392/406 (97%)	375 (96%)	15 (4%)	2 (0%)	32	73
1	E	394/406 (97%)	378 (96%)	14 (4%)	2 (0%)	32	73
2	B	79/91 (87%)	74 (94%)	5 (6%)	0	100	100
2	F	80/91 (88%)	76 (95%)	4 (5%)	0	100	100
3	C	70/77 (91%)	63 (90%)	6 (9%)	1 (1%)	13	51
3	G	69/77 (90%)	62 (90%)	5 (7%)	2 (3%)	5	31
4	D	116/150 (77%)	104 (90%)	11 (10%)	1 (1%)	20	62

Continued on next page...

*Continued from previous page...*

Mol	Chain	Analysed	Favoured	Allowed	Outliers	Percentiles
4	H	124/150 (83%)	111 (90%)	12 (10%)	1 (1%)	22 64
All	All	1324/1448 (91%)	1243 (94%)	72 (5%)	9 (1%)	25 67

All (9) Ramachandran outliers are listed below:

Mol	Chain	Res	Type
1	A	273	ARG
1	E	273	ARG
1	E	452	ILE
1	A	451	SER
3	C	62	ILE
4	D	96	LYS
3	G	4	GLU
3	G	62	ILE
4	H	96	LYS

### 5.3.2 Protein sidechains ⓘ

In the following table, the Percentiles column shows the percent sidechain outliers of the chain as a percentile score with respect to all X-ray entries followed by that with respect to entries of similar resolution.

The Analysed column shows the number of residues for which the sidechain conformation was analysed, and the total number of residues.

Mol	Chain	Analysed	Rotameric	Outliers	Percentiles
1	A	294/346 (85%)	289 (98%)	5 (2%)	66 88
1	E	310/346 (90%)	305 (98%)	5 (2%)	68 89
2	B	59/80 (74%)	58 (98%)	1 (2%)	66 88
2	F	65/80 (81%)	64 (98%)	1 (2%)	70 90
3	C	29/66 (44%)	29 (100%)	0	100 100
3	G	49/66 (74%)	46 (94%)	3 (6%)	22 59
4	D	38/126 (30%)	36 (95%)	2 (5%)	26 63
4	H	95/126 (75%)	88 (93%)	7 (7%)	16 50
All	All	939/1236 (76%)	915 (97%)	24 (3%)	51 82

All (24) residues with a non-rotameric sidechain are listed below:

Mol	Chain	Res	Type
1	A	172	GLN
1	A	188	GLU
1	A	277	ARG
1	A	397	THR
1	A	401	LEU
2	B	27	ASN
4	D	61	VAL
4	D	98	THR
1	E	69	LEU
1	E	145	ARG
1	E	272	ARG
1	E	445	ASP
1	E	455	THR
2	F	27	ASN
3	G	3	ILE
3	G	4	GLU
3	G	9	LYS
4	H	11	SER
4	H	13	GLN
4	H	22	ARG
4	H	61	VAL
4	H	67	THR
4	H	98	THR
4	H	111	LEU

Some sidechains can be flipped to improve hydrogen bonding and reduce clashes. All (2) such sidechains are listed below:

Mol	Chain	Res	Type
1	A	172	GLN
4	H	13	GLN

### 5.3.3 RNA ⓘ

There are no RNA molecules in this entry.

## 5.4 Non-standard residues in protein, DNA, RNA chains ⓘ

There are no non-standard protein/DNA/RNA residues in this entry.

## 5.5 Carbohydrates [i](#)

There are no carbohydrates in this entry.

## 5.6 Ligand geometry [i](#)

4 ligands are modelled in this entry.

In the following table, the Counts columns list the number of bonds (or angles) for which Mogul statistics could be retrieved, the number of bonds (or angles) that are observed in the model and the number of bonds (or angles) that are defined in the Chemical Component Dictionary. The Link column lists molecule types, if any, to which the group is linked. The Z score for a bond length (or angle) is the number of standard deviations the observed value is removed from the expected value. A bond length (or angle) with  $|Z| > 2$  is considered an outlier worth inspection. RMSZ is the root-mean-square of all Z scores of the bond lengths (or angles).

Mol	Type	Chain	Res	Link	Bond lengths			Bond angles		
					Counts	RMSZ	# $ Z  > 2$	Counts	RMSZ	# $ Z  > 2$
5	PLP	A	501	1	15,15,16	1.55	2 (13%)	20,22,23	1.06	2 (10%)
6	8Q1	C	301	3	28,33,34	1.89	7 (25%)	32,40,43	1.96	7 (21%)
5	PLP	E	501	1	15,15,16	1.59	3 (20%)	20,22,23	1.09	2 (10%)
6	8Q1	G	301	3	28,33,34	1.83	7 (25%)	32,40,43	2.11	7 (21%)

In the following table, the Chirals column lists the number of chiral outliers, the number of chiral centers analysed, the number of these observed in the model and the number defined in the Chemical Component Dictionary. Similar counts are reported in the Torsion and Rings columns. '-' means no outliers of that kind were identified.

Mol	Type	Chain	Res	Link	Chirals	Torsions	Rings
5	PLP	A	501	1	-	0/6/6/8	0/1/1/1
6	8Q1	C	301	3	-	0/38/40/41	0/0/0/0
5	PLP	E	501	1	-	0/6/6/8	0/1/1/1
6	8Q1	G	301	3	-	0/38/40/41	0/0/0/0

All (19) bond length outliers are listed below:

Mol	Chain	Res	Type	Atoms	Z	Observed(Å)	Ideal(Å)
5	E	501	PLP	C5-C4	-3.71	1.36	1.40
5	A	501	PLP	C5-C4	-3.71	1.36	1.40
6	C	301	8Q1	O27-C28	-3.32	1.40	1.44
5	E	501	PLP	C3-C2	-3.13	1.38	1.40
6	G	301	8Q1	O27-C28	-3.06	1.40	1.44
5	A	501	PLP	C3-C2	-2.65	1.38	1.40

*Continued on next page...*

*Continued from previous page...*

Mol	Chain	Res	Type	Atoms	Z	Observed(Å)	Ideal(Å)
6	G	301	8Q1	O35-C34	-2.30	1.18	1.23
6	C	301	8Q1	O35-C34	-2.21	1.19	1.23
6	G	301	8Q1	O40-C39	-2.14	1.18	1.23
6	C	301	8Q1	O40-C39	-2.13	1.18	1.23
5	E	501	PLP	C3-C4	-2.13	1.35	1.40
6	G	301	8Q1	C6-C1	2.13	1.53	1.50
6	C	301	8Q1	C6-C1	2.32	1.53	1.50
6	G	301	8Q1	C1-S44	2.67	1.81	1.76
6	C	301	8Q1	C1-S44	2.90	1.82	1.76
6	G	301	8Q1	C39-N41	4.96	1.45	1.33
6	C	301	8Q1	C39-N41	5.24	1.45	1.33
6	C	301	8Q1	C34-N36	5.73	1.45	1.33
6	G	301	8Q1	C34-N36	5.81	1.45	1.33

All (18) bond angle outliers are listed below:

Mol	Chain	Res	Type	Atoms	Z	Observed(°)	Ideal(°)
6	C	301	8Q1	O4-C1-C6	-4.51	120.00	123.95
6	G	301	8Q1	O4-C1-C6	-4.49	120.02	123.95
6	G	301	8Q1	O4-C1-S44	-3.55	119.12	122.84
6	G	301	8Q1	O27-C28-C29	-2.99	105.74	110.55
6	C	301	8Q1	C38-C37-N36	-2.96	105.74	111.87
6	C	301	8Q1	O4-C1-S44	-2.82	119.89	122.84
6	C	301	8Q1	C42-N41-C39	-2.48	118.09	122.84
5	E	501	PLP	C5-C6-N1	-2.37	119.86	123.87
6	G	301	8Q1	C42-N41-C39	-2.36	118.31	122.84
5	A	501	PLP	C5-C6-N1	-2.15	120.23	123.87
6	G	301	8Q1	C38-C39-N41	2.25	120.37	116.49
5	A	501	PLP	C6-C5-C4	2.28	120.09	118.18
6	C	301	8Q1	C43-S44-C1	2.58	110.43	101.90
5	E	501	PLP	C6-C5-C4	2.76	120.48	118.18
6	G	301	8Q1	C37-C38-C39	3.04	117.11	112.22
6	C	301	8Q1	C38-C39-N41	3.33	122.24	116.49
6	C	301	8Q1	C6-C1-S44	6.77	120.10	113.28
6	G	301	8Q1	C6-C1-S44	7.52	120.86	113.28

There are no chirality outliers.

There are no torsion outliers.

There are no ring outliers.

3 monomers are involved in 4 short contacts:

Mol	Chain	Res	Type	Clashes	Symm-Clashes
5	A	501	PLP	1	0
6	C	301	8Q1	1	0
6	G	301	8Q1	2	0

## 5.7 Other polymers [i](#)

There are no such residues in this entry.

## 5.8 Polymer linkage issues [i](#)

There are no chain breaks in this entry.



## 6 Fit of model and data ⓘ

### 6.1 Protein, DNA and RNA chains ⓘ

In the following table, the column labelled ‘#RSRZ> 2’ contains the number (and percentage) of RSRZ outliers, followed by percent RSRZ outliers for the chain as percentile scores relative to all X-ray entries and entries of similar resolution. The OWAB column contains the minimum, median, 95<sup>th</sup> percentile and maximum values of the occupancy-weighted average B-factor per residue. The column labelled ‘Q< 0.9’ lists the number of (and percentage) of residues with an average occupancy less than 0.9.

Mol	Chain	Analysed	<RSRZ>	#RSRZ>2	OWAB(Å <sup>2</sup> )	Q<0.9
1	A	396/406 (97%)	-0.22	2 (0%) 90 85	46, 73, 140, 207	0
1	E	398/406 (98%)	-0.30	3 (0%) 86 77	45, 71, 118, 177	0
2	B	81/91 (89%)	-0.29	0 100 100	67, 92, 121, 156	0
2	F	82/91 (90%)	-0.43	0 100 100	55, 77, 107, 130	0
3	C	72/77 (93%)	0.21	0 100 100	92, 134, 162, 171	0
3	G	71/77 (92%)	-0.25	0 100 100	67, 92, 128, 154	0
4	D	118/150 (78%)	0.90	19 (16%) 2 1	126, 161, 187, 202	0
4	H	126/150 (84%)	-0.19	0 100 100	66, 88, 127, 147	0
All	All	1344/1448 (92%)	-0.14	24 (1%) 69 53	45, 81, 164, 207	0

All (24) RSRZ outliers are listed below:

Mol	Chain	Res	Type	RSRZ
4	D	34	VAL	5.1
1	E	378	GLY	3.9
4	D	41	ALA	3.6
4	D	37	GLY	3.6
4	D	50	LEU	3.4
1	A	446	GLY	3.1
1	E	379	SER	2.8
4	D	58	GLY	2.8
1	A	454	TRP	2.6
4	D	95	ILE	2.6
4	D	52	ILE	2.5
4	D	126	ALA	2.5
4	D	83	TRP	2.5
4	D	105	CYS	2.4
1	E	385	SER	2.4
4	D	35	GLY	2.4

*Continued on next page...*

*Continued from previous page...*

Mol	Chain	Res	Type	RSRZ
4	D	79	LEU	2.4
4	D	107	PRO	2.3
4	D	103	GLU	2.3
4	D	43	ALA	2.3
4	D	124	ALA	2.2
4	D	51	GLN	2.1
4	D	125	LEU	2.1
4	D	54	VAL	2.0

## 6.2 Non-standard residues in protein, DNA, RNA chains [i](#)

There are no non-standard protein/DNA/RNA residues in this entry.

## 6.3 Carbohydrates [i](#)

There are no carbohydrates in this entry.

## 6.4 Ligands [i](#)

In the following table, the Atoms column lists the number of modelled atoms in the group and the number defined in the chemical component dictionary. LLDF column lists the quality of electron density of the group with respect to its neighbouring residues in protein, DNA or RNA chains. The B-factors column lists the minimum, median, 95<sup>th</sup> percentile and maximum values of B factors of atoms in the group. The column labelled 'Q< 0.9' lists the number of atoms with occupancy less than 0.9.

Mol	Type	Chain	Res	Atoms	RSCC	RSR	LLDF	B-factors( $\text{\AA}^2$ )	Q<0.9
5	PLP	A	501	15/16	0.95	0.27	2.02	71,85,96,96	0
6	8Q1	G	301	34/35	0.94	0.28	1.70	68,89,95,101	0
6	8Q1	C	301	34/35	0.94	0.28	0.78	59,96,119,122	0
5	PLP	E	501	15/16	0.96	0.20	-0.48	50,63,82,89	0

## 6.5 Other polymers [i](#)

There are no such residues in this entry.