



# wwPDB X-ray Structure Validation Summary Report ⓘ

Aug 1, 2017 – 02:14 PM EDT

PDB ID : 2WL5  
Title : BIOSYNTHETIC THIOLASE FROM Z. RAMIGERA. COMPLEX OF THE H348N MUTANT WITH COENZYME A.  
Authors : Merilainen, G.; Poikela, V.; Kursula, P.; Wierenga, R.K.  
Deposited on : unknown  
Resolution : 1.80 Å(reported)

This is a wwPDB X-ray Structure Validation Summary Report for a publicly released PDB entry.

We welcome your comments at [validation@mail.wwpdb.org](mailto:validation@mail.wwpdb.org)

A user guide is available at

<http://wwpdb.org/validation/2016/XrayValidationReportHelp>

with specific help available everywhere you see the ⓘ symbol.

---

The following versions of software and data (see [references ⓘ](#)) were used in the production of this report:

MolProbity : 4.02b-467  
Mogul : 1.7.2 (RC1), CSD as538be (2017)  
Xtriage (Phenix) : 1.9-1692  
EDS : rb-20029824  
Percentile statistics : 20161228.v01 (using entries in the PDB archive December 28th 2016)  
Refmac : 5.8.0135  
CCP4 : 6.5.0  
Ideal geometry (proteins) : Engh & Huber (2001)  
Ideal geometry (DNA, RNA) : Parkinson et al. (1996)  
Validation Pipeline (wwPDB-VP) : rb-20029824

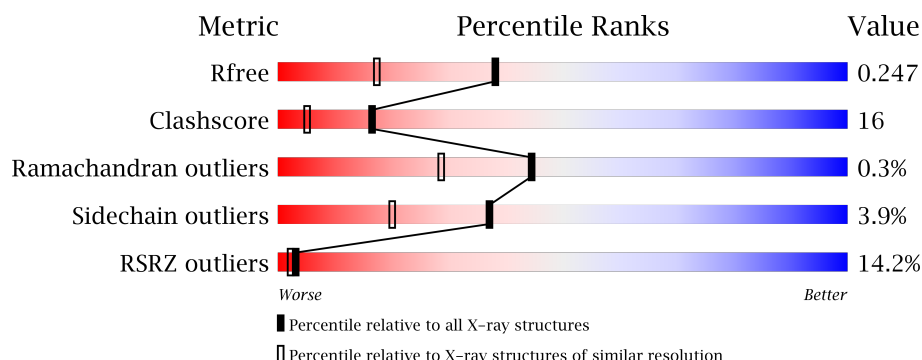
# 1 Overall quality at a glance ⓘ

The following experimental techniques were used to determine the structure:

## *X-RAY DIFFRACTION*

The reported resolution of this entry is 1.80 Å.

Percentile scores (ranging between 0-100) for global validation metrics of the entry are shown in the following graphic. The table shows the number of entries on which the scores are based.



Metric	Whole archive (#Entries)	Similar resolution (#Entries, resolution range(Å))
$R_{free}$	100719	4827 (1.80-1.80)
Clashscore	112137	5742 (1.80-1.80)
Ramachandran outliers	110173	5676 (1.80-1.80)
Sidechain outliers	110143	5675 (1.80-1.80)
RSRZ outliers	101464	4906 (1.80-1.80)

The table below summarises the geometric issues observed across the polymeric chains and their fit to the electron density. The red, orange, yellow and green segments on the lower bar indicate the fraction of residues that contain outliers for  $\geq 3$ , 2, 1 and 0 types of geometric quality criteria. A grey segment represents the fraction of residues that are not modelled. The numeric value for each fraction is indicated below the corresponding segment, with a dot representing fractions  $\leq 5\%$ . The upper red bar (where present) indicates the fraction of residues that have poor fit to the electron density. The numeric value is given above the bar.

Mol	Chain	Length	Quality of chain
1	A	392	<div> <div>83%</div> <div>15%</div> <div>..</div> </div>
1	B	392	<div> <div>85%</div> <div>12%</div> <div>..</div> </div>
2	C	392	<div> <div>23%</div> <div>59%</div> <div>39%</div> <div>..</div> </div>
2	D	392	<div> <div>31%</div> <div>65%</div> <div>33%</div> <div>..</div> </div>

The following table lists non-polymeric compounds, carbohydrate monomers and non-standard residues in protein, DNA, RNA chains that are outliers for geometric or electron-density-fit crite-

ria:

Mol	Type	Chain	Res	Chirality	Geometry	Clashes	Electron density
3	SO4	B	1397	-	-	-	X
4	DNO	A	1398	X	-	-	-
4	DNO	C	1397	X	-	-	X
4	DNO	C	1398	X	-	-	-
4	DNO	C	1399	X	-	-	-
6	NA	B	1398	-	-	-	X

## 2 Entry composition

There are 8 unique types of molecules in this entry. The entry contains 12780 atoms, of which 0 are hydrogens and 0 are deuteriums.

In the tables below, the ZeroOcc column contains the number of atoms modelled with zero occupancy, the AltConf column contains the number of residues with at least one atom in alternate conformation and the Trace column contains the number of residues modelled with at most 2 atoms.

- Molecule 1 is a protein called ACETYL-COA ACETYLTRANSFERASE.

Mol	Chain	Residues	Atoms					ZeroOcc	AltConf	Trace
1	A	389	Total	C	N	O	S	0	8	0
			2856	1783	513	539	21			
1	B	389	Total	C	N	O	S	0	7	0
			2850	1775	511	541	23			

There are 4 discrepancies between the modelled and reference sequences:

Chain	Residue	Modelled	Actual	Comment	Reference
A	129	ARG	ALA	SEE REMARK 999	UNP P07097
A	348	ASN	HIS	engineered mutation	UNP P07097
B	129	ARG	ALA	SEE REMARK 999	UNP P07097
B	348	ASN	HIS	engineered mutation	UNP P07097

- Molecule 2 is a protein called ACETYL-COA ACETYLTRANSFERASE.

Mol	Chain	Residues	Atoms					ZeroOcc	AltConf	Trace
2	C	389	Total	C	N	O	S	0	1	0
			2815	1748	508	538	21			
2	D	389	Total	C	N	O	S	0	0	0
			2811	1744	508	538	21			

There are 4 discrepancies between the modelled and reference sequences:

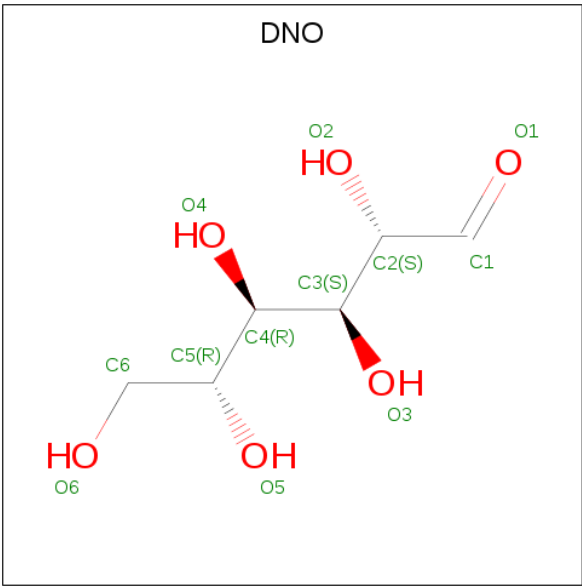
Chain	Residue	Modelled	Actual	Comment	Reference
C	129	ARG	ALA	SEE REMARK 999	UNP P07097
C	348	ASN	HIS	engineered mutation	UNP P07097
D	129	ARG	ALA	SEE REMARK 999	UNP P07097
D	348	ASN	HIS	engineered mutation	UNP P07097

- Molecule 3 is SULFATE ION (three-letter code: SO4) (formula: O<sub>4</sub>S).



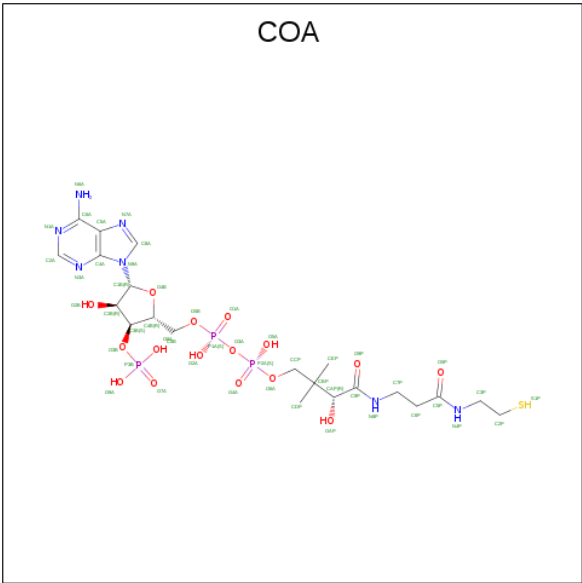
Mol	Chain	Residues	Atoms			ZeroOcc	AltConf
3	A	1	Total	O	S	0	0
			5	4	1		
3	A	1	Total	O	S	0	0
			5	4	1		
3	A	1	Total	O	S	0	0
			5	4	1		
3	A	1	Total	O	S	0	0
			5	4	1		
3	B	1	Total	O	S	0	0
			5	4	1		
3	B	1	Total	O	S	0	0
			5	4	1		
3	B	1	Total	O	S	0	0
			5	4	1		
3	B	1	Total	O	S	0	0
			5	4	1		
3	C	1	Total	O	S	0	0
			5	4	1		
3	C	1	Total	O	S	0	0
			5	4	1		
3	C	1	Total	O	S	0	0
			5	4	1		
3	C	1	Total	O	S	0	0
			5	4	1		
3	D	1	Total	O	S	0	0
			5	4	1		

- Molecule 4 is D-mannose (three-letter code: DNO) (formula: C<sub>6</sub>H<sub>12</sub>O<sub>6</sub>).



Mol	Chain	Residues	Atoms			ZeroOcc	AltConf
4	A	1	Total	C	O	0	0
			12	6	6		
4	C	1	Total	C	O	0	0
			12	6	6		
4	C	1	Total	C	O	0	0
			12	6	6		
4	C	1	Total	C	O	0	0
			12	6	6		

- Molecule 5 is COENZYME A (three-letter code: COA) (formula: C<sub>21</sub>H<sub>36</sub>N<sub>7</sub>O<sub>16</sub>P<sub>3</sub>S).



Mol	Chain	Residues	Atoms					ZeroOcc	AltConf
5	A	1	Total	C	N	O	P	S	
			48	21	7	16	3	1	
5	B	1	Total	C	N	O	P	S	
			48	21	7	16	3	1	

- Molecule 6 is SODIUM ION (three-letter code: NA) (formula: Na).

Mol	Chain	Residues	Atoms		ZeroOcc	AltConf
6	B	1	Total	Na		
			1	1	0	0

- Molecule 7 is CHLORIDE ION (three-letter code: CL) (formula: Cl).

Mol	Chain	Residues	Atoms		ZeroOcc	AltConf
7	B	1	Total	Cl		
			1	1	0	0

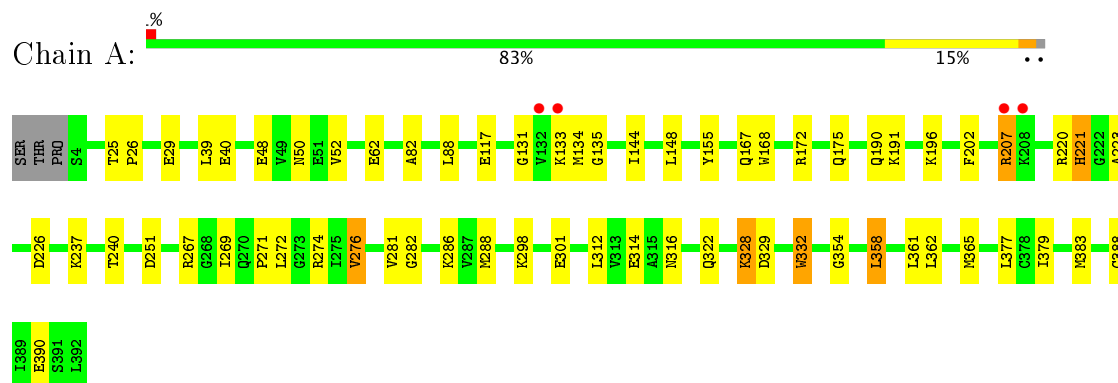
- Molecule 8 is water.

Mol	Chain	Residues	Atoms		ZeroOcc	AltConf
8	A	453	Total	O		
			453	453	0	0
8	B	479	Total	O		
			479	479	0	0
8	C	171	Total	O		
			171	171	0	0
8	D	129	Total	O		
			129	129	0	0

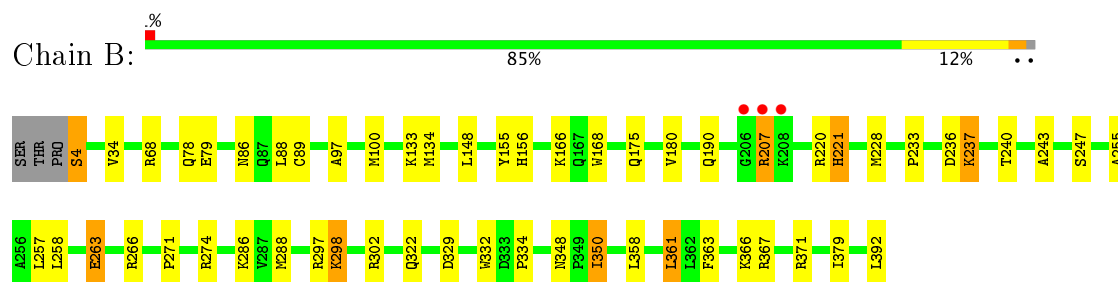
### 3 Residue-property plots

These plots are drawn for all protein, RNA and DNA chains in the entry. The first graphic for a chain summarises the proportions of the various outlier classes displayed in the second graphic. The second graphic shows the sequence view annotated by issues in geometry and electron density. Residues are color-coded according to the number of geometric quality criteria for which they contain at least one outlier: green = 0, yellow = 1, orange = 2 and red = 3 or more. A red dot above a residue indicates a poor fit to the electron density ( $RSRZ > 2$ ). Stretches of 2 or more consecutive residues without any outlier are shown as a green connector. Residues present in the sample, but not in the model, are shown in grey.

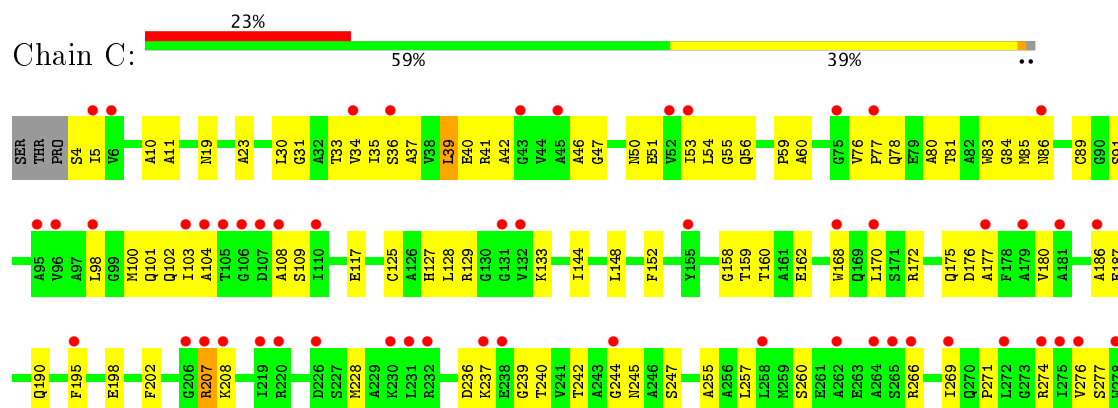
#### • Molecule 1: ACETYL-COA ACETYLTRANSFERASE



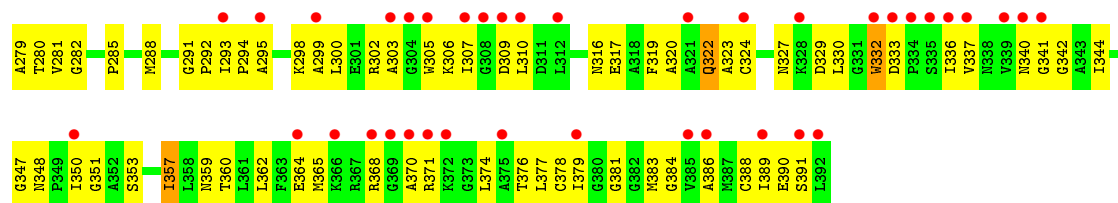
#### • Molecule 1: ACETYL-COA ACETYLTRANSFERASE



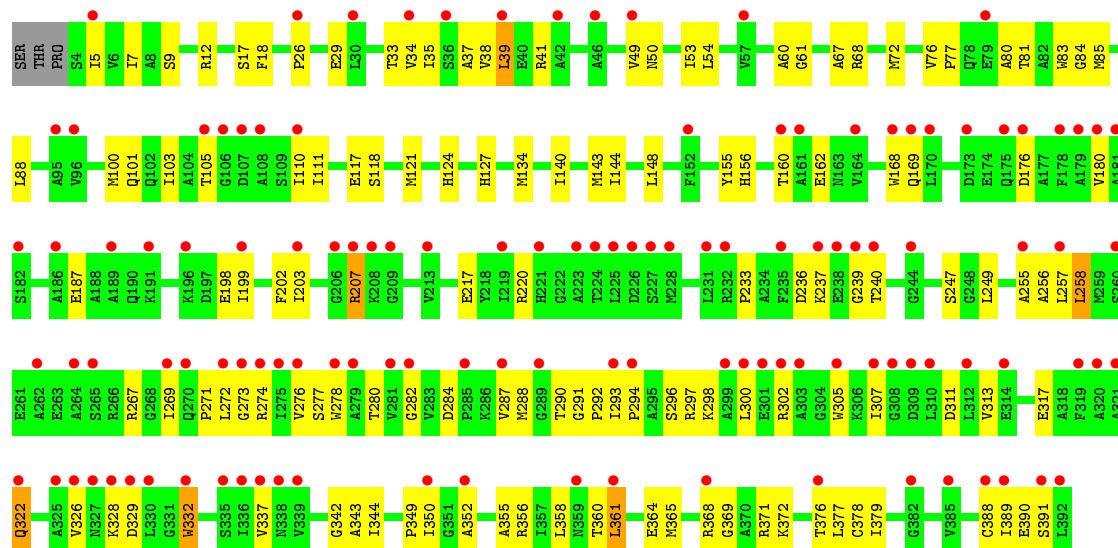
#### • Molecule 2: ACETYL-COA ACETYLTRANSFERASE







# Molecule 2: ACETYL-COA ACETYLTRANSFERASE



## 4 Data and refinement statistics

Property	Value	Source
Space group	P 1 21 1	Depositor
Cell constants a, b, c, $\alpha$ , $\beta$ , $\gamma$	84.70 Å 79.20 Å 153.00 Å 90.00° 92.50° 90.00°	Depositor
Resolution (Å)	19.39 – 1.80 19.39 – 1.80	Depositor EDS
% Data completeness (in resolution range)	98.6 (19.39-1.80) 86.6 (19.39-1.80)	Depositor EDS
$R_{merge}$	0.12	Depositor
$R_{sym}$	(Not available)	Depositor
$\langle I/\sigma(I) \rangle$ <sup>1</sup>	2.46 (at 1.80 Å)	Xtriage
Refinement program	PHENIX (PHENIX.REFINE)	Depositor
R, $R_{free}$	0.221 , 0.257 0.210 , 0.247	Depositor DCC
$R_{free}$ test set	9225 reflections (5.00%)	DCC
Wilson B-factor (Å <sup>2</sup> )	12.6	Xtriage
Anisotropy	0.115	Xtriage
Bulk solvent $k_{sol}$ (e/Å <sup>3</sup> ), $B_{sol}$ (Å <sup>2</sup> )	0.36 , 64.0	EDS
L-test for twinning <sup>2</sup>	$\langle  L  \rangle = 0.36$ , $\langle L^2 \rangle = 0.18$	Xtriage
Estimated twinning fraction	0.176 for h,-k,-l	Xtriage
$F_o, F_c$ correlation	0.91	EDS
Total number of atoms	12780	wwPDB-VP
Average B, all atoms (Å <sup>2</sup> )	36.0	wwPDB-VP

Xtriage's analysis on translational NCS is as follows: *The largest off-origin peak in the Patterson function is 3.88% of the height of the origin peak. No significant pseudotranslation is detected.*

<sup>1</sup>Intensities estimated from amplitudes.

<sup>2</sup>Theoretical values of  $\langle |L| \rangle$ ,  $\langle L^2 \rangle$  for acentric reflections are 0.5, 0.333 respectively for untwinned datasets, and 0.375, 0.2 for perfectly twinned datasets.

## 5 Model quality [i](#)

### 5.1 Standard geometry [i](#)

Bond lengths and bond angles in the following residue types are not validated in this section: CSO, CL, NA, DNO, COA, SO4

The Z score for a bond length (or angle) is the number of standard deviations the observed value is removed from the expected value. A bond length (or angle) with  $|Z| > 5$  is considered an outlier worth inspection. RMSZ is the root-mean-square of all Z scores of the bond lengths (or angles).

Mol	Chain	Bond lengths		Bond angles	
		RMSZ	$\# Z  > 5$	RMSZ	$\# Z  > 5$
1	A	0.54	0/2912	0.67	0/3928
1	B	0.54	0/2900	0.69	3/3910 (0.1%)
2	C	0.27	0/2858	0.46	0/3859
2	D	0.26	0/2851	0.46	0/3849
All	All	0.43	0/11521	0.58	3/15546 (0.0%)

There are no bond length outliers.

All (3) bond angle outliers are listed below:

Mol	Chain	Res	Type	Atoms	Z	Observed(°)	Ideal(°)
1	B	367	ARG	NE-CZ-NH2	-7.13	116.73	120.30
1	B	361	LEU	CA-CB-CG	5.37	127.65	115.30
1	B	367	ARG	NE-CZ-NH1	5.27	122.93	120.30

There are no chirality outliers.

There are no planarity outliers.

### 5.2 Too-close contacts [i](#)

In the following table, the Non-H and H(model) columns list the number of non-hydrogen atoms and hydrogen atoms in the chain respectively. The H(added) column lists the number of hydrogen atoms added and optimized by MolProbity. The Clashes column lists the number of clashes within the asymmetric unit, whereas Symm-Clashes lists symmetry related clashes.

Mol	Chain	Non-H	H(model)	H(added)	Clashes	Symm-Clashes
1	A	2856	0	2910	73	0
1	B	2850	0	2888	51	0
2	C	2815	0	2827	143	0
2	D	2811	0	2818	113	0

*Continued on next page...*

*Continued from previous page...*

Mol	Chain	Non-H	H(model)	H(added)	Clashes	Symm-Clashes
3	A	20	0	0	0	0
3	B	25	0	0	0	0
3	C	20	0	0	0	0
3	D	5	0	0	0	0
4	A	12	0	12	0	0
4	C	36	0	36	2	0
5	A	48	0	32	5	0
5	B	48	0	32	3	0
6	B	1	0	0	0	0
7	B	1	0	0	0	0
8	A	453	0	0	28	0
8	B	479	0	0	16	0
8	C	171	0	0	45	0
8	D	129	0	0	24	0
All	All	12780	0	11555	367	0

The all-atom clashscore is defined as the number of clashes found per 1000 atoms (including hydrogen atoms). The all-atom clashscore for this structure is 16.

The worst 5 of 367 close contacts within the same asymmetric unit are listed below, sorted by their clash magnitude.

Atom-1	Atom-2	Interatomic distance (Å)	Clash overlap (Å)
1:A:207:ARG:HG2	1:A:207:ARG:HH11	1.10	1.14
1:A:207:ARG:H	1:A:207:ARG:HD3	1.29	0.97
2:C:274:ARG:HE	2:C:390:GLU:HG2	1.33	0.93
2:D:207:ARG:H	2:D:207:ARG:HD3	1.36	0.90
1:A:226:ASP:HB3	8:A:2448:HOH:O	1.74	0.88

There are no symmetry-related clashes.

## 5.3 Torsion angles [i](#)

### 5.3.1 Protein backbone [i](#)

In the following table, the Percentiles column shows the percent Ramachandran outliers of the chain as a percentile score with respect to all X-ray entries followed by that with respect to entries of similar resolution.

The Analysed column shows the number of residues for which the backbone conformation was analysed, and the total number of residues.

Mol	Chain	Analysed	Favoured	Allowed	Outliers	Percentiles	
1	A	394/392 (100%)	378 (96%)	16 (4%)	0	100	100
1	B	393/392 (100%)	380 (97%)	12 (3%)	1 (0%)	44	29
2	C	388/392 (99%)	365 (94%)	22 (6%)	1 (0%)	44	29
2	D	387/392 (99%)	359 (93%)	26 (7%)	2 (0%)	32	17
All	All	1562/1568 (100%)	1482 (95%)	76 (5%)	4 (0%)	44	29

All (4) Ramachandran outliers are listed below:

Mol	Chain	Res	Type
2	C	350	ILE
2	D	350	ILE
2	D	169	GLN
1	B	350	ILE

### 5.3.2 Protein sidechains ⓘ

In the following table, the Percentiles column shows the percent sidechain outliers of the chain as a percentile score with respect to all X-ray entries followed by that with respect to entries of similar resolution.

The Analysed column shows the number of residues for which the sidechain conformation was analysed, and the total number of residues.

Mol	Chain	Analysed	Rotameric	Outliers	Percentiles	
1	A	283/278 (102%)	269 (95%)	14 (5%)	29	12
1	B	282/278 (101%)	268 (95%)	14 (5%)	28	12
2	C	277/279 (99%)	270 (98%)	7 (2%)	53	38
2	D	276/279 (99%)	265 (96%)	11 (4%)	36	19
All	All	1118/1114 (100%)	1072 (96%)	46 (4%)	37	18

5 of 46 residues with a non-rotameric sidechain are listed below:

Mol	Chain	Res	Type
1	B	263	GLU
1	B	358[A]	LEU
2	D	322	GLN
1	B	288	MET
1	B	322	GLN

Some sidechains can be flipped to improve hydrogen bonding and reduce clashes. 5 of 18 such

sidechains are listed below:

Mol	Chain	Res	Type
1	B	184	ASN
1	B	221	HIS
2	C	270	GLN
1	B	78	GLN
1	B	175	GLN

### 5.3.3 RNA ⓘ

There are no RNA molecules in this entry.

## 5.4 Non-standard residues in protein, DNA, RNA chains ⓘ

2 non-standard protein/DNA/RNA residues are modelled in this entry.

In the following table, the Counts columns list the number of bonds (or angles) for which Mogul statistics could be retrieved, the number of bonds (or angles) that are observed in the model and the number of bonds (or angles) that are defined in the chemical component dictionary. The Link column lists molecule types, if any, to which the group is linked. The Z score for a bond length (or angle) is the number of standard deviations the observed value is removed from the expected value. A bond length (or angle) with  $|Z| > 2$  is considered an outlier worth inspection. RMSZ is the root-mean-square of all Z scores of the bond lengths (or angles).

Mol	Type	Chain	Res	Link	Bond lengths			Bond angles		
					Counts	RMSZ	$\# Z  > 2$	Counts	RMSZ	$\# Z  > 2$
1	CSO	A	89	1	4,6,7	0.51	0	1,6,8	1.70	0
1	CSO	B	89	1	4,6,7	0.85	0	1,6,8	1.78	0

In the following table, the Chirals column lists the number of chiral outliers, the number of chiral centers analysed, the number of these observed in the model and the number defined in the chemical component dictionary. Similar counts are reported in the Torsion and Rings columns. '-' means no outliers of that kind were identified.

Mol	Type	Chain	Res	Link	Chirals	Torsions	Rings
1	CSO	A	89	1	-	0/1/5/7	0/0/0/0
1	CSO	B	89	1	-	0/1/5/7	0/0/0/0

There are no bond length outliers.

There are no bond angle outliers.

There are no chirality outliers.

There are no torsion outliers.

There are no ring outliers.

1 monomer is involved in 1 short contact:

Mol	Chain	Res	Type	Clashes	Symm-Clashes
1	B	89	CSO	1	0

## 5.5 Carbohydrates [i](#)

There are no carbohydrates in this entry.

## 5.6 Ligand geometry [i](#)

Of 22 ligands modelled in this entry, 2 are monoatomic - leaving 20 for Mogul analysis.

In the following table, the Counts columns list the number of bonds (or angles) for which Mogul statistics could be retrieved, the number of bonds (or angles) that are observed in the model and the number of bonds (or angles) that are defined in the chemical component dictionary. The Link column lists molecule types, if any, to which the group is linked. The Z score for a bond length (or angle) is the number of standard deviations the observed value is removed from the expected value. A bond length (or angle) with  $|Z| > 2$  is considered an outlier worth inspection. RMSZ is the root-mean-square of all Z scores of the bond lengths (or angles).

Mol	Type	Chain	Res	Link	Bond lengths			Bond angles		
					Counts	RMSZ	# $ Z  > 2$	Counts	RMSZ	# $ Z  > 2$
3	SO4	A	1394	-	4,4,4	0.16	0	6,6,6	0.08	0
3	SO4	A	1395	-	4,4,4	0.19	0	6,6,6	0.12	0
3	SO4	A	1396	-	4,4,4	0.15	0	6,6,6	0.11	0
3	SO4	A	1397	-	4,4,4	0.14	0	6,6,6	0.04	0
4	DNO	A	1398	-	11,11,11	2.15	3 (27%)	14,14,14	1.93	6 (42%)
5	COA	A	1399	-	43,50,50	2.42	16 (37%)	48,75,75	2.10	8 (16%)
3	SO4	B	1394	-	4,4,4	0.17	0	6,6,6	0.13	0
3	SO4	B	1395	-	4,4,4	0.14	0	6,6,6	0.13	0
3	SO4	B	1396	-	4,4,4	0.17	0	6,6,6	0.09	0
3	SO4	B	1397	-	4,4,4	0.17	0	6,6,6	0.11	0
5	COA	B	1399	-	43,50,50	2.44	13 (30%)	48,75,75	2.12	7 (14%)
3	SO4	B	1401	-	4,4,4	0.15	0	6,6,6	0.09	0
3	SO4	C	1393	-	4,4,4	0.15	0	6,6,6	0.07	0
3	SO4	C	1394	-	4,4,4	0.15	0	6,6,6	0.07	0
3	SO4	C	1395	-	4,4,4	0.14	0	6,6,6	0.11	0
3	SO4	C	1396	-	4,4,4	0.16	0	6,6,6	0.07	0
4	DNO	C	1397	-	11,11,11	2.01	2 (18%)	14,14,14	1.73	5 (35%)
4	DNO	C	1398	-	11,11,11	2.07	2 (18%)	14,14,14	1.90	4 (28%)
4	DNO	C	1399	-	11,11,11	2.14	4 (36%)	14,14,14	1.98	5 (35%)

Mol	Type	Chain	Res	Link	Bond lengths			Bond angles		
					Counts	RMSZ	# Z  > 2	Counts	RMSZ	# Z  > 2
3	SO4	D	1393	-	4,4,4	0.14	0	6,6,6	0.11	0

In the following table, the Chirals column lists the number of chiral outliers, the number of chiral centers analysed, the number of these observed in the model and the number defined in the chemical component dictionary. Similar counts are reported in the Torsion and Rings columns. '-' means no outliers of that kind were identified.

Mol	Type	Chain	Res	Link	Chirals	Torsions	Rings
3	SO4	A	1394	-	-	0/0/0/0	0/0/0/0
3	SO4	A	1395	-	-	0/0/0/0	0/0/0/0
3	SO4	A	1396	-	-	0/0/0/0	0/0/0/0
3	SO4	A	1397	-	-	0/0/0/0	0/0/0/0
4	DNO	A	1398	-	2/2/4/5	0/14/16/16	0/0/0/0
5	COA	A	1399	-	-	0/44/64/64	0/3/3/3
3	SO4	B	1394	-	-	0/0/0/0	0/0/0/0
3	SO4	B	1395	-	-	0/0/0/0	0/0/0/0
3	SO4	B	1396	-	-	0/0/0/0	0/0/0/0
3	SO4	B	1397	-	-	0/0/0/0	0/0/0/0
5	COA	B	1399	-	-	0/44/64/64	0/3/3/3
3	SO4	B	1401	-	-	0/0/0/0	0/0/0/0
3	SO4	C	1393	-	-	0/0/0/0	0/0/0/0
3	SO4	C	1394	-	-	0/0/0/0	0/0/0/0
3	SO4	C	1395	-	-	0/0/0/0	0/0/0/0
3	SO4	C	1396	-	-	0/0/0/0	0/0/0/0
4	DNO	C	1397	-	2/2/4/5	0/14/16/16	0/0/0/0
4	DNO	C	1398	-	2/2/4/5	0/14/16/16	0/0/0/0
4	DNO	C	1399	-	2/2/4/5	0/14/16/16	0/0/0/0
3	SO4	D	1393	-	-	0/0/0/0	0/0/0/0

The worst 5 of 40 bond length outliers are listed below:

Mol	Chain	Res	Type	Atoms	Z	Observed(Å)	Ideal(Å)
5	B	1399	COA	C2B-C1B	-2.71	1.49	1.53
5	A	1399	COA	C5A-C4A	-2.60	1.34	1.40
5	A	1399	COA	C4A-N3A	-2.53	1.31	1.35
5	B	1399	COA	C5A-C4A	-2.47	1.34	1.40
5	A	1399	COA	C2B-C1B	-2.14	1.50	1.53

The worst 5 of 35 bond angle outliers are listed below:



Mol	Chain	Res	Type	Atoms	Z	Observed(°)	Ideal(°)
5	B	1399	COA	N3A-C2A-N1A	-11.23	119.08	128.86
5	A	1399	COA	N3A-C2A-N1A	-10.33	119.86	128.86
5	A	1399	COA	C3P-N4P-C5P	-3.89	115.38	122.84
4	C	1398	DNO	O1-C1-C2	-3.13	116.60	125.13
4	C	1397	DNO	O1-C1-C2	-3.01	116.94	125.13

5 of 8 chirality outliers are listed below:

Mol	Chain	Res	Type	Atom
4	C	1399	DNO	C2
4	C	1399	DNO	C3
4	A	1398	DNO	C2
4	A	1398	DNO	C3
4	C	1398	DNO	C2

There are no torsion outliers.

There are no ring outliers.

4 monomers are involved in 10 short contacts:

Mol	Chain	Res	Type	Clashes	Symm-Clashes
5	A	1399	COA	5	0
5	B	1399	COA	3	0
4	C	1397	DNO	1	0
4	C	1398	DNO	1	0

## 5.7 Other polymers [i](#)

There are no such residues in this entry.

## 5.8 Polymer linkage issues [i](#)

There are no chain breaks in this entry.

## 6 Fit of model and data ⓘ

### 6.1 Protein, DNA and RNA chains ⓘ

In the following table, the column labelled ‘#RSRZ> 2’ contains the number (and percentage) of RSRZ outliers, followed by percent RSRZ outliers for the chain as percentile scores relative to all X-ray entries and entries of similar resolution. The OWAB column contains the minimum, median, 95<sup>th</sup> percentile and maximum values of the occupancy-weighted average B-factor per residue. The column labelled ‘Q< 0.9’ lists the number of (and percentage) of residues with an average occupancy less than 0.9.

Mol	Chain	Analysed	<RSRZ>	#RSRZ>2	OWAB(Å <sup>2</sup> )	Q<0.9
1	A	388/392 (98%)	-0.50	4 (1%) 82 80	5, 13, 34, 96	0
1	B	388/392 (98%)	-0.53	3 (0%) 86 84	5, 13, 32, 88	0
2	C	389/392 (99%)	1.36	92 (23%) 1 0	18, 50, 79, 108	0
2	D	389/392 (99%)	1.68	122 (31%) 0 0	20, 57, 102, 131	0
All	All	1554/1568 (99%)	0.50	221 (14%) 3 2	5, 34, 81, 131	0

The worst 5 of 221 RSRZ outliers are listed below:

Mol	Chain	Res	Type	RSRZ
2	D	285	PRO	8.6
2	D	207	ARG	8.2
2	D	307	ILE	7.9
2	D	231	LEU	7.9
2	D	269	ILE	7.9

### 6.2 Non-standard residues in protein, DNA, RNA chains ⓘ

In the following table, the Atoms column lists the number of modelled atoms in the group and the number defined in the chemical component dictionary. LLDF column lists the quality of electron density of the group with respect to its neighbouring residues in protein, DNA or RNA chains. The B-factors column lists the minimum, median, 95<sup>th</sup> percentile and maximum values of B factors of atoms in the group. The column labelled ‘Q< 0.9’ lists the number of atoms with occupancy less than 0.9.

Mol	Type	Chain	Res	Atoms	RSCC	RSR	LLDF	B-factors(Å <sup>2</sup> )	Q<0.9
1	CSO	B	89	7/8	0.98	0.07	-	2,6,26,28	0
1	CSO	A	89	7/8	0.98	0.07	-	7,9,23,28	0

### 6.3 Carbohydrates ⓘ

There are no carbohydrates in this entry.

### 6.4 Ligands ⓘ

In the following table, the Atoms column lists the number of modelled atoms in the group and the number defined in the chemical component dictionary. LLDF column lists the quality of electron density of the group with respect to its neighbouring residues in protein, DNA or RNA chains. The B-factors column lists the minimum, median, 95<sup>th</sup> percentile and maximum values of B factors of atoms in the group. The column labelled 'Q< 0.9' lists the number of atoms with occupancy less than 0.9.

Mol	Type	Chain	Res	Atoms	RSCC	RSR	LLDF	B-factors(Å <sup>2</sup> )	Q<0.9
6	NA	B	1398	1/1	0.19	1.26	212.61	123,123,123,123	0
3	SO4	B	1397	5/5	0.87	0.23	16.67	71,71,73,77	0
4	DNO	C	1397	12/12	0.70	0.22	13.71	44,55,91,93	0
3	SO4	C	1394	5/5	0.53	0.31	1.44	129,131,131,131	0
3	SO4	C	1396	5/5	0.88	0.27	0.52	64,66,67,71	0
4	DNO	C	1398	12/12	0.54	0.30	0.46	57,65,78,79	0
5	COA	B	1399	48/48	0.93	0.09	0.41	12,27,61,75	0
5	COA	A	1399	48/48	0.91	0.11	0.26	15,28,76,107	0
3	SO4	A	1396	5/5	0.90	0.19	-	64,64,66,66	0
3	SO4	A	1394	5/5	0.96	0.08	-	40,44,50,56	0
4	DNO	A	1398	12/12	0.71	0.29	-	42,52,75,76	0
4	DNO	C	1399	12/12	0.70	0.23	-	42,55,72,72	0
3	SO4	C	1395	5/5	0.83	0.29	-	81,83,86,87	0
3	SO4	B	1394	5/5	0.96	0.08	-	30,39,41,43	0
3	SO4	C	1393	5/5	0.81	0.18	-	75,77,78,79	0
3	SO4	B	1396	5/5	0.77	0.29	-	77,80,81,82	0
3	SO4	A	1395	5/5	0.96	0.12	-	43,50,53,57	0
7	CL	B	1400	1/1	0.90	0.05	-	68,68,68,68	0
3	SO4	A	1397	5/5	0.93	0.13	-	72,73,76,77	0
3	SO4	D	1393	5/5	0.90	0.10	-	61,62,65,67	0
3	SO4	B	1395	5/5	0.97	0.09	-	41,44,47,48	0
3	SO4	B	1401	5/5	0.75	0.26	-	89,90,91,92	0

### 6.5 Other polymers ⓘ

There are no such residues in this entry.