



Full wwPDB X-ray Structure Validation Report ⓘ

Nov 13, 2017 – 03:37 AM EST

PDB ID : 3WLF
Title : Crystal structure of (R)-carbonyl reductase from Candida Parapsilosis in complex with (R)-1-phenyl-1,2-ethanediol
Authors : Wang, S.S.; Nie, Y.; Xu, Y.; Zhang, R.Z.; Huang, C.H.; Chan, H.C.; Guo, R.T.; Xiao, R.
Deposited on : unknown
Resolution : 2.30 Å(reported)

This is a Full wwPDB X-ray Structure Validation Report for a publicly released PDB entry.

We welcome your comments at validation@mail.wwpdb.org

A user guide is available at

<http://wwpdb.org/validation/2016/XrayValidationReportHelp>

with specific help available everywhere you see the ⓘ symbol.

The following versions of software and data (see [references ⓘ](#)) were used in the production of this report:

MolProbity : 4.02b-467
Mogul : 1.7.2 (RC1), CSD as538be (2017)
Xtriage (Phenix) : 1.9-1692
EDS : rb-20030345
Percentile statistics : 20161228.v01 (using entries in the PDB archive December 28th 2016)
Refmac : 5.8.0135
CCP4 : 6.5.0
Ideal geometry (proteins) : Engh & Huber (2001)
Ideal geometry (DNA, RNA) : Parkinson et al. (1996)
Validation Pipeline (wwPDB-VP) : rb-20030345

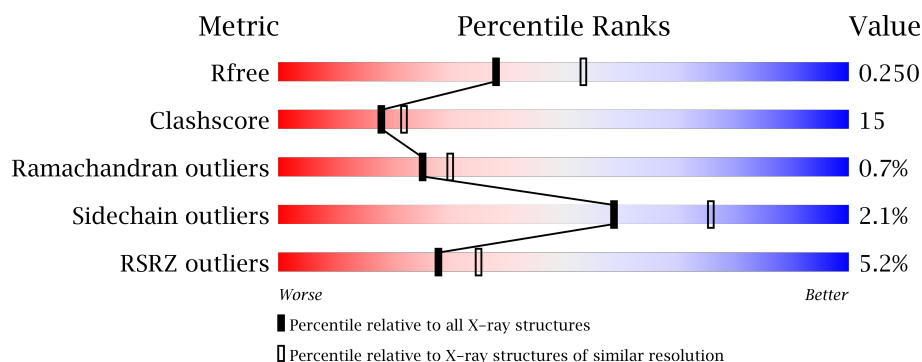
1 Overall quality at a glance

The following experimental techniques were used to determine the structure:

X-RAY DIFFRACTION

The reported resolution of this entry is 2.30 Å.

Percentile scores (ranging between 0-100) for global validation metrics of the entry are shown in the following graphic. The table shows the number of entries on which the scores are based.



Metric	Whole archive (#Entries)	Similar resolution (#Entries, resolution range(Å))
R_{free}	100719	4130 (2.30-2.30)
Clashscore	112137	4751 (2.30-2.30)
Ramachandran outliers	110173	4705 (2.30-2.30)
Sidechain outliers	110143	4704 (2.30-2.30)
RSRZ outliers	101464	4156 (2.30-2.30)

The table below summarises the geometric issues observed across the polymeric chains and their fit to the electron density. The red, orange, yellow and green segments on the lower bar indicate the fraction of residues that contain outliers for ≥ 3 , 2, 1 and 0 types of geometric quality criteria. A grey segment represents the fraction of residues that are not modelled. The numeric value for each fraction is indicated below the corresponding segment, with a dot representing fractions $\leq 5\%$. The upper red bar (where present) indicates the fraction of residues that have poor fit to the electron density. The numeric value is given above the bar.

Mol	Chain	Length	Quality of chain
1	A	341	<div> <div>7%</div> <div>66%</div> <div>31%</div> <div>..</div> </div>
1	B	341	<div> <div>3%</div> <div>71%</div> <div>25%</div> <div>..</div> </div>
1	C	341	<div> <div>8%</div> <div>69%</div> <div>28%</div> <div>..</div> </div>
1	D	341	<div> <div>3%</div> <div>69%</div> <div>26%</div> <div>..</div> </div>

The following table lists non-polymeric compounds, carbohydrate monomers and non-standard residues in protein, DNA, RNA chains that are outliers for geometric or electron-density-fit crite-

ria:

Mol	Type	Chain	Res	Chirality	Geometry	Clashes	Electron density
2	FEH	A	401	-	-	-	X
2	FEH	B	401	-	-	-	X
2	FEH	C	401	-	-	-	X
2	FEH	D	401	-	-	-	X

2 Entry composition

There are 4 unique types of molecules in this entry. The entry contains 11160 atoms, of which 0 are hydrogens and 0 are deuteriums.

In the tables below, the ZeroOcc column contains the number of atoms modelled with zero occupancy, the AltConf column contains the number of residues with at least one atom in alternate conformation and the Trace column contains the number of residues modelled with at most 2 atoms.

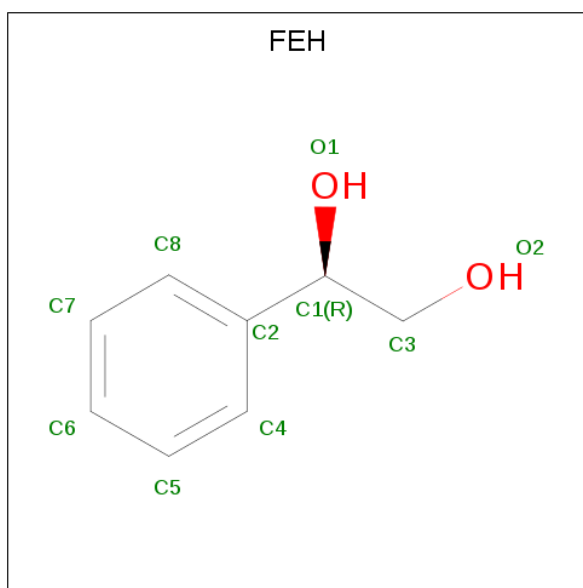
- Molecule 1 is a protein called (R)-specific carbonyl reductase.

Mol	Chain	Residues	Atoms					ZeroOcc	AltConf	Trace
1	A	335	Total	C	N	O	S	0	0	0
			2522	1601	434	475	12			
1	B	334	Total	C	N	O	S	0	0	0
			2516	1598	433	473	12			
1	C	333	Total	C	N	O	S	0	0	0
			2507	1593	432	470	12			
1	D	332	Total	C	N	O	S	0	0	0
			2504	1590	431	471	12			

There are 20 discrepancies between the modelled and reference sequences:

Chain	Residue	Modelled	Actual	Comment	Reference
A	-4	ALA	-	EXPRESSION TAG	UNP A1X808
A	-3	GLY	-	EXPRESSION TAG	UNP A1X808
A	-2	ALA	-	EXPRESSION TAG	UNP A1X808
A	-1	GLY	-	EXPRESSION TAG	UNP A1X808
A	0	ALA	-	EXPRESSION TAG	UNP A1X808
B	-4	ALA	-	EXPRESSION TAG	UNP A1X808
B	-3	GLY	-	EXPRESSION TAG	UNP A1X808
B	-2	ALA	-	EXPRESSION TAG	UNP A1X808
B	-1	GLY	-	EXPRESSION TAG	UNP A1X808
B	0	ALA	-	EXPRESSION TAG	UNP A1X808
C	-4	ALA	-	EXPRESSION TAG	UNP A1X808
C	-3	GLY	-	EXPRESSION TAG	UNP A1X808
C	-2	ALA	-	EXPRESSION TAG	UNP A1X808
C	-1	GLY	-	EXPRESSION TAG	UNP A1X808
C	0	ALA	-	EXPRESSION TAG	UNP A1X808
D	-4	ALA	-	EXPRESSION TAG	UNP A1X808
D	-3	GLY	-	EXPRESSION TAG	UNP A1X808
D	-2	ALA	-	EXPRESSION TAG	UNP A1X808
D	-1	GLY	-	EXPRESSION TAG	UNP A1X808
D	0	ALA	-	EXPRESSION TAG	UNP A1X808

- Molecule 2 is (1R)-1-phenylethane-1,2-diol (three-letter code: FEH) (formula: C₈H₁₀O₂).



Mol	Chain	Residues	Atoms			ZeroOcc	AltConf
2	A	1	Total	C	O	0	0
			10	8	2		
2	B	1	Total	C	O	0	0
			10	8	2		
2	C	1	Total	C	O	0	0
			10	8	2		
2	D	1	Total	C	O	0	0
			10	8	2		

- Molecule 3 is ZINC ION (three-letter code: ZN) (formula: Zn).

Mol	Chain	Residues	Atoms		ZeroOcc	AltConf
3	B	2	Total	Zn	0	0
			2	2		
3	A	2	Total	Zn	0	0
			2	2		
3	D	2	Total	Zn	0	0
			2	2		
3	C	2	Total	Zn	0	0
			2	2		

- Molecule 4 is water.

Mol	Chain	Residues	Atoms		ZeroOcc	AltConf
4	A	241	Total	O	0	0
			241	241		

Continued on next page...

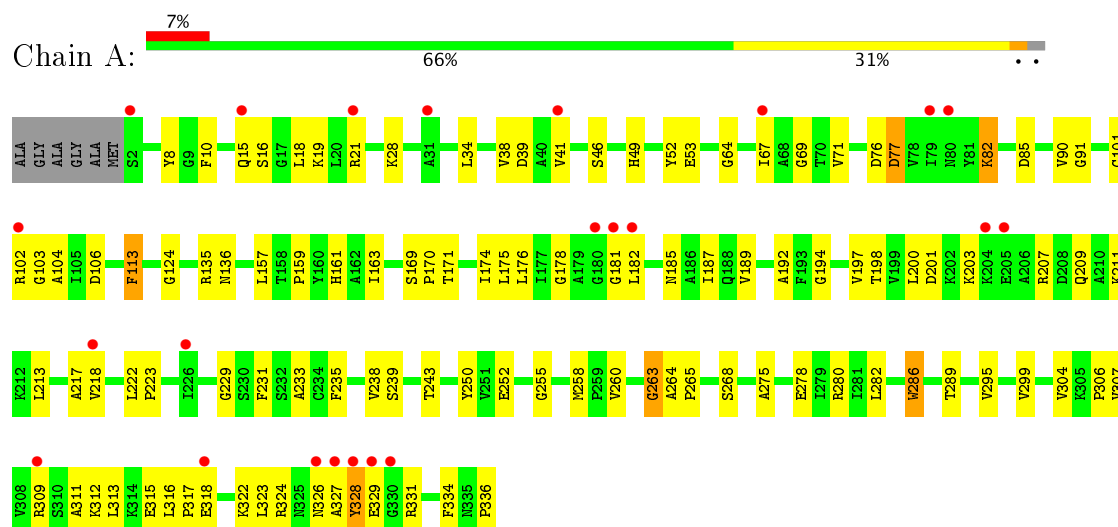
Continued from previous page...

Mol	Chain	Residues	Atoms		ZeroOcc	AltConf
4	B	345	Total 345	O 345	0	0
4	C	223	Total 223	O 223	0	0
4	D	254	Total 254	O 254	0	0

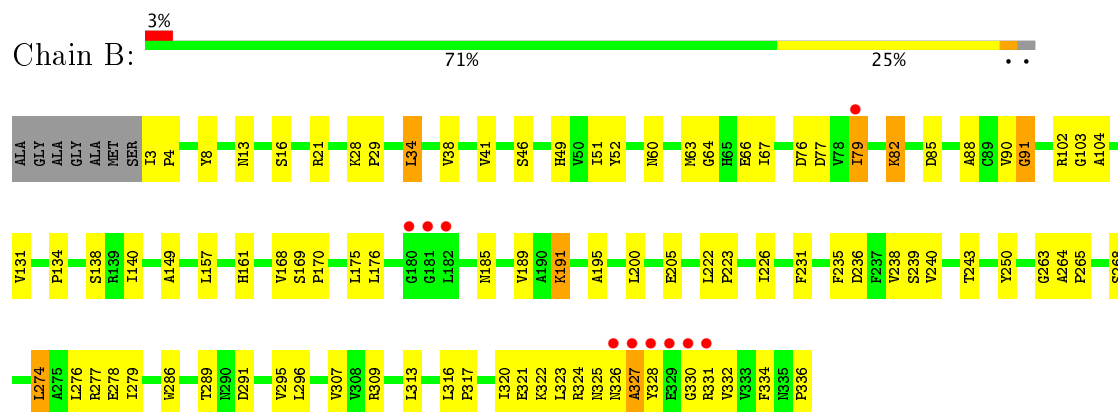
3 Residue-property plots [i](#)

These plots are drawn for all protein, RNA and DNA chains in the entry. The first graphic for a chain summarises the proportions of the various outlier classes displayed in the second graphic. The second graphic shows the sequence view annotated by issues in geometry and electron density. Residues are color-coded according to the number of geometric quality criteria for which they contain at least one outlier: green = 0, yellow = 1, orange = 2 and red = 3 or more. A red dot above a residue indicates a poor fit to the electron density ($RSRZ > 2$). Stretches of 2 or more consecutive residues without any outlier are shown as a green connector. Residues present in the sample, but not in the model, are shown in grey.

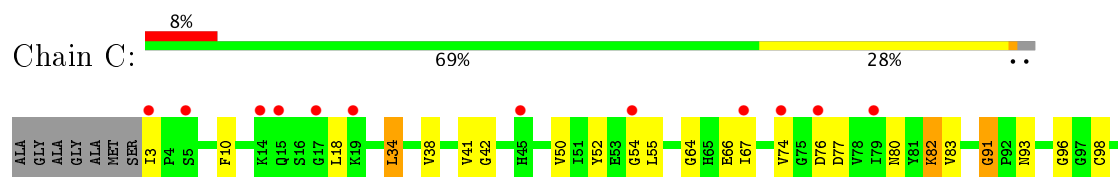
• Molecule 1: (R)-specific carbonyl reductase

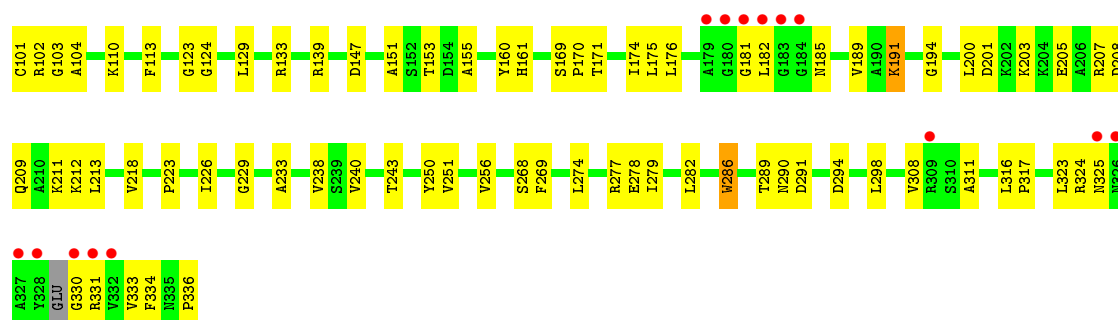


• Molecule 1: (R)-specific carbonyl reductase

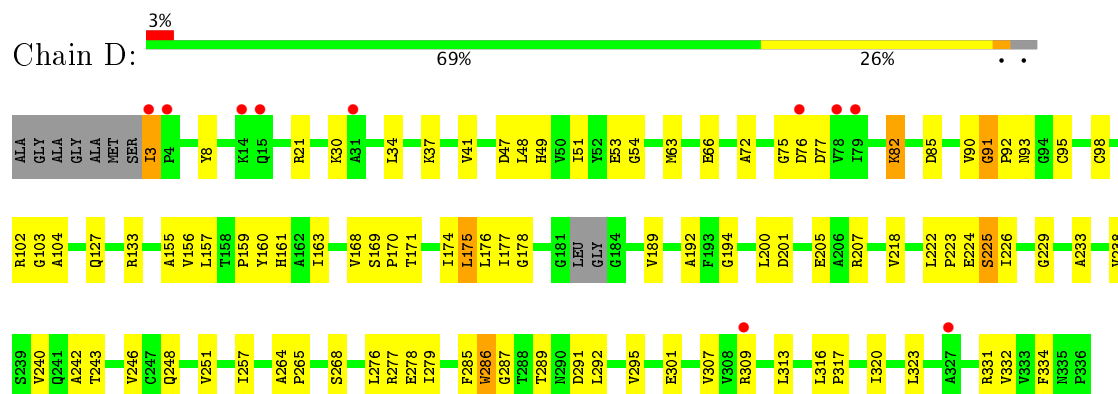


• Molecule 1: (R)-specific carbonyl reductase





- Molecule 1: (R)-specific carbonyl reductase



4 Data and refinement statistics

Property	Value	Source
Space group	P 21 21 21	Depositor
Cell constants a, b, c, α , β , γ	93.49Å 103.72Å 141.94Å 90.00° 90.00° 90.00°	Depositor
Resolution (Å)	25.00 – 2.30 24.26 – 2.29	Depositor EDS
% Data completeness (in resolution range)	97.0 (25.00-2.30) 96.8 (24.26-2.29)	Depositor EDS
R_{merge}	0.09	Depositor
R_{sym}	(Not available)	Depositor
$\langle I/\sigma(I) \rangle$ ¹	5.45 (at 2.28Å)	Xtriage
Refinement program	CNS 1.1	Depositor
R, R_{free}	0.206 , 0.250 0.206 , 0.250	Depositor DCC
R_{free} test set	3028 reflections (5.04%)	DCC
Wilson B-factor (Å ²)	24.0	Xtriage
Anisotropy	0.396	Xtriage
Bulk solvent k_{sol} (e/Å ³), B_{sol} (Å ²)	0.32 , 49.2	EDS
L-test for twinning ²	$\langle L \rangle = 0.49$, $\langle L^2 \rangle = 0.33$	Xtriage
Estimated twinning fraction	No twinning to report.	Xtriage
F_o, F_c correlation	0.93	EDS
Total number of atoms	11160	wwPDB-VP
Average B, all atoms (Å ²)	30.0	wwPDB-VP

Xtriage's analysis on translational NCS is as follows: *The largest off-origin peak in the Patterson function is 3.89% of the height of the origin peak. No significant pseudotranslation is detected.*

¹Intensities estimated from amplitudes.

²Theoretical values of $\langle |L| \rangle$, $\langle L^2 \rangle$ for acentric reflections are 0.5, 0.333 respectively for untwinned datasets, and 0.375, 0.2 for perfectly twinned datasets.

5 Model quality [i](#)

5.1 Standard geometry [i](#)

Bond lengths and bond angles in the following residue types are not validated in this section: ZN, FEH

The Z score for a bond length (or angle) is the number of standard deviations the observed value is removed from the expected value. A bond length (or angle) with $|Z| > 5$ is considered an outlier worth inspection. RMSZ is the root-mean-square of all Z scores of the bond lengths (or angles).

Mol	Chain	Bond lengths		Bond angles	
		RMSZ	$\# Z > 5$	RMSZ	$\# Z > 5$
1	A	0.25	0/2571	0.50	0/3483
1	B	0.26	0/2565	0.52	0/3475
1	C	0.25	0/2555	0.50	0/3460
1	D	0.25	0/2552	0.51	0/3456
All	All	0.25	0/10243	0.51	0/13874

There are no bond length outliers.

There are no bond angle outliers.

There are no chirality outliers.

There are no planarity outliers.

5.2 Too-close contacts [i](#)

In the following table, the Non-H and H(model) columns list the number of non-hydrogen atoms and hydrogen atoms in the chain respectively. The H(added) column lists the number of hydrogen atoms added and optimized by MolProbity. The Clashes column lists the number of clashes within the asymmetric unit, whereas Symm-Clashes lists symmetry related clashes.

Mol	Chain	Non-H	H(model)	H(added)	Clashes	Symm-Clashes
1	A	2522	0	2527	97	0
1	B	2516	0	2522	77	0
1	C	2507	0	2515	76	0
1	D	2504	0	2507	75	0
2	A	10	0	10	0	0
2	B	10	0	10	0	0
2	C	10	0	10	0	0
2	D	10	0	10	0	0
3	A	2	0	0	0	0

Continued on next page...

Continued from previous page...

Mol	Chain	Non-H	H(model)	H(added)	Clashes	Symm-Clashes
3	B	2	0	0	0	0
3	C	2	0	0	0	0
3	D	2	0	0	0	0
4	A	241	0	0	2	0
4	B	345	0	0	5	0
4	C	223	0	0	4	0
4	D	254	0	0	2	0
All	All	11160	0	10111	306	0

The all-atom clashscore is defined as the number of clashes found per 1000 atoms (including hydrogen atoms). The all-atom clashscore for this structure is 15.

All (306) close contacts within the same asymmetric unit are listed below, sorted by their clash magnitude.

Atom-1	Atom-2	Interatomic distance (Å)	Clash overlap (Å)
1:A:289:THR:HB	1:B:102:ARG:HH11	1.38	0.89
1:C:308:VAL:HG11	1:C:333:VAL:HG13	1.53	0.88
1:B:238:VAL:HG11	1:B:243:THR:HG21	1.52	0.88
1:B:34:LEU:HD12	1:B:134:PRO:HG3	1.59	0.85
1:A:238:VAL:HG11	1:A:243:THR:HG21	1.60	0.84
1:D:238:VAL:HG11	1:D:243:THR:HG21	1.63	0.80
1:A:176:LEU:HD23	1:A:235:PHE:HB2	1.62	0.80
1:C:289:THR:OG1	1:D:102:ARG:HD3	1.82	0.78
1:B:277:ARG:HB2	1:B:279:ILE:HD11	1.65	0.78
1:C:238:VAL:HG11	1:C:243:THR:HG21	1.65	0.78
1:D:223:PRO:HG2	1:D:226:ILE:HD13	1.65	0.78
1:D:277:ARG:NH1	1:D:279:ILE:HD11	1.99	0.78
1:A:174:ILE:HG22	1:A:233:ALA:HB3	1.66	0.77
1:B:88:ALA:HB2	1:B:140:ILE:HD11	1.64	0.77
1:B:79:ILE:H	1:B:79:ILE:HD13	1.49	0.76
1:D:8:TYR:H	1:D:127:GLN:HE21	1.34	0.75
1:A:67:ILE:HD12	1:A:124:GLY:HA3	1.68	0.75
1:C:169:SER:HB2	1:C:170:PRO:HD2	1.68	0.74
1:B:330:GLY:O	1:B:332:VAL:HG23	1.87	0.73
1:D:169:SER:HB2	1:D:170:PRO:HD2	1.73	0.71
1:B:322:LYS:HB3	1:B:327:ALA:HB3	1.72	0.70
1:D:93:ASN:ND2	1:D:133:ARG:HH11	1.90	0.70
1:A:289:THR:HB	1:B:102:ARG:NH1	2.06	0.69
1:A:64:GLY:O	1:A:67:ILE:HD11	1.92	0.69
1:D:301:GLU:HG2	4:D:673:HOH:O	1.92	0.69
1:C:316:LEU:HB3	1:C:317:PRO:HD3	1.75	0.69

Continued on next page...

Continued from previous page...

Atom-1	Atom-2	Interatomic distance (Å)	Clash overlap (Å)
1:C:98:CYS:O	1:C:102:ARG:HG2	1.92	0.69
1:C:277:ARG:NH1	1:C:279:ILE:HD11	2.07	0.69
1:A:312:LYS:HG2	1:A:315:GLU:OE2	1.94	0.68
1:D:51:ILE:HD11	1:D:63:MET:SD	2.34	0.68
1:C:67:ILE:HD12	1:C:124:GLY:HA3	1.74	0.68
1:D:224:GLU:O	1:D:225:SER:HB3	1.93	0.68
1:D:3:ILE:N	1:D:3:ILE:HD13	2.09	0.68
1:D:159:PRO:O	1:D:163:ILE:HG12	1.93	0.67
1:B:60:ASN:HB2	4:B:783:HOH:O	1.93	0.67
1:B:191:LYS:HA	1:B:191:LYS:HE2	1.77	0.66
1:A:8:TYR:HA	1:A:21:ARG:O	1.95	0.66
1:A:318:GLU:OE2	1:A:322:LYS:HE3	1.95	0.66
1:C:64:GLY:O	1:C:67:ILE:HD11	1.94	0.66
1:B:67:ILE:HD12	1:B:67:ILE:N	2.10	0.66
1:C:191:LYS:HA	1:C:191:LYS:HE2	1.78	0.66
1:B:277:ARG:HB2	1:B:279:ILE:CD1	2.27	0.65
1:A:101:CYS:O	1:A:102:ARG:HB3	1.96	0.64
1:C:201:ASP:O	1:C:207:ARG:HD2	1.97	0.64
1:A:174:ILE:HD11	1:A:197:VAL:HG13	1.78	0.64
1:B:238:VAL:CG1	1:B:243:THR:HG21	2.26	0.63
1:A:52:TYR:CE2	1:A:324:ARG:HD2	2.33	0.63
1:A:289:THR:CB	1:B:102:ARG:HH11	2.12	0.63
1:D:238:VAL:HG22	1:D:240:VAL:HG23	1.82	0.62
1:A:200:LEU:HD12	1:A:222:LEU:HD13	1.81	0.62
1:D:316:LEU:HB3	1:D:317:PRO:HD3	1.82	0.62
1:A:161:HIS:HE1	1:D:278:GLU:OE2	1.82	0.61
1:A:238:VAL:CG1	1:A:243:THR:HG21	2.30	0.61
1:A:239:SER:O	1:A:263:GLY:HA3	2.01	0.61
1:B:161:HIS:HD2	1:B:291:ASP:OD2	1.84	0.60
1:C:223:PRO:HG2	1:C:226:ILE:HG12	1.84	0.60
1:C:50:VAL:HA	1:C:55:LEU:HB3	1.84	0.60
1:A:181:GLY:O	1:A:182:LEU:HB2	2.02	0.60
1:A:49:HIS:HA	1:A:53:GLU:HB2	1.83	0.60
1:C:147:ASP:HB3	1:C:333:VAL:HG21	1.82	0.60
1:A:28:LYS:HA	1:A:28:LYS:HE3	1.83	0.60
1:A:176:LEU:HD12	1:A:187:ILE:HD13	1.84	0.59
1:A:309:ARG:NH1	1:A:309:ARG:HB2	2.16	0.59
1:D:161:HIS:HD2	1:D:291:ASP:OD2	1.85	0.59
1:D:98:CYS:O	1:D:102:ARG:HG2	2.02	0.59
1:C:151:ALA:CB	1:C:308:VAL:HG21	2.32	0.59
1:A:316:LEU:HB3	1:A:317:PRO:HD3	1.84	0.59

Continued on next page...

Continued from previous page...

Atom-1	Atom-2	Interatomic distance (Å)	Clash overlap (Å)
1:A:176:LEU:CD2	1:A:235:PHE:HB2	2.30	0.58
1:B:52:TYR:CE2	1:B:324:ARG:HD2	2.38	0.58
1:C:52:TYR:CE2	1:C:324:ARG:HD2	2.37	0.58
1:B:34:LEU:CD1	1:B:134:PRO:HG3	2.32	0.58
1:C:238:VAL:CG1	1:C:243:THR:HG21	2.33	0.58
1:D:238:VAL:CG1	1:D:243:THR:HG21	2.33	0.58
1:C:174:ILE:HG22	1:C:233:ALA:HB3	1.86	0.57
1:D:174:ILE:HG22	1:D:233:ALA:HB3	1.85	0.57
1:D:224:GLU:O	1:D:225:SER:CB	2.51	0.57
1:D:177:ILE:HD12	1:D:177:ILE:N	2.18	0.57
1:B:278:GLU:OE2	1:C:161:HIS:HE1	1.88	0.57
1:A:201:ASP:O	1:A:207:ARG:HD2	2.04	0.57
1:D:309:ARG:HB3	1:D:332:VAL:HG22	1.87	0.57
1:B:79:ILE:HD13	1:B:79:ILE:N	2.19	0.57
1:B:64:GLY:O	1:B:67:ILE:HD11	2.04	0.57
1:D:8:TYR:HA	1:D:21:ARG:O	2.05	0.57
1:A:175:LEU:HD23	1:A:176:LEU:N	2.19	0.56
1:A:304:VAL:O	1:A:306:PRO:HD3	2.05	0.56
1:B:3:ILE:HG21	4:B:696:HOH:O	2.04	0.56
1:C:290:ASN:ND2	1:D:102:ARG:HG3	2.19	0.56
1:A:76:ASP:O	1:A:77:ASP:HB2	2.06	0.56
1:A:67:ILE:HD12	1:A:124:GLY:CA	2.35	0.56
1:A:176:LEU:CD1	1:A:187:ILE:HD13	2.36	0.56
1:B:161:HIS:HE1	1:C:278:GLU:OE2	1.89	0.56
1:A:200:LEU:HD23	1:A:201:ASP:N	2.21	0.56
1:A:159:PRO:O	1:A:163:ILE:HG12	2.06	0.55
1:A:101:CYS:C	1:A:103:GLY:H	2.10	0.55
1:D:82:LYS:HD2	1:D:85:ASP:OD2	2.07	0.55
1:C:229:GLY:H	1:C:250:TYR:HA	1.72	0.55
1:A:46:SER:HA	1:A:49:HIS:HD2	1.71	0.54
1:D:37:LYS:HB2	1:D:72:ALA:HB2	1.88	0.54
1:B:279:ILE:N	1:B:279:ILE:HD12	2.23	0.54
1:C:208:ASP:O	1:C:212:LYS:HG2	2.07	0.54
1:D:175:LEU:HD22	1:D:177:ILE:CD1	2.38	0.54
1:B:28:LYS:HD2	1:B:29:PRO:HD2	1.88	0.54
1:C:155:ALA:HB1	1:C:185:ASN:HD22	1.72	0.54
1:B:51:ILE:HD11	1:B:63:MET:SD	2.47	0.54
1:A:170:PRO:HA	1:A:194:GLY:O	2.08	0.54
1:B:231:PHE:HD2	1:B:250:TYR:HB3	1.73	0.54
1:D:47:ASP:O	1:D:51:ILE:HG12	2.08	0.54
1:A:113:PHE:HZ	1:D:276:LEU:HD21	1.74	0.53

Continued on next page...

Continued from previous page...

Atom-1	Atom-2	Interatomic distance (Å)	Clash overlap (Å)
1:B:279:ILE:HD12	1:B:279:ILE:H	1.73	0.53
1:D:226:ILE:N	1:D:226:ILE:HD12	2.23	0.53
1:C:209:GLN:O	1:C:213:LEU:HG	2.09	0.53
1:D:170:PRO:HA	1:D:194:GLY:O	2.09	0.53
1:C:155:ALA:HB1	1:C:185:ASN:ND2	2.23	0.53
1:C:161:HIS:HD2	1:C:291:ASP:OD2	1.92	0.53
1:A:229:GLY:H	1:A:250:TYR:HA	1.74	0.52
1:C:169:SER:OG	1:C:171:THR:HG22	2.09	0.52
1:A:10:PHE:HB3	1:A:18:LEU:HD11	1.90	0.52
1:D:316:LEU:O	1:D:320:ILE:HG12	2.09	0.52
1:A:46:SER:HA	1:A:49:HIS:CD2	2.45	0.52
1:A:198:THR:HA	1:A:217:ALA:HB3	1.90	0.52
1:A:174:ILE:C	1:A:174:ILE:HD12	2.30	0.52
1:B:8:TYR:HA	1:B:21:ARG:O	2.10	0.52
1:D:175:LEU:HD23	1:D:176:LEU:N	2.25	0.51
1:B:316:LEU:HB3	1:B:317:PRO:HD3	1.92	0.51
1:D:3:ILE:HG12	1:D:3:ILE:O	2.11	0.51
1:B:323:LEU:HB2	1:B:328:TYR:CE2	2.45	0.51
1:C:290:ASN:HD21	1:D:102:ARG:HG3	1.74	0.51
1:D:41:VAL:HA	1:D:66:GLU:O	2.11	0.51
1:A:323:LEU:HD12	1:A:327:ALA:CB	2.41	0.51
1:C:96:GLY:HA2	1:C:101:CYS:HB3	1.93	0.51
1:C:207:ARG:HG2	1:C:218:VAL:HG12	1.93	0.51
1:B:34:LEU:HD13	1:B:131:VAL:HB	1.92	0.50
1:D:205:GLU:OE1	1:D:205:GLU:N	2.43	0.50
1:A:34:LEU:HD23	1:A:34:LEU:C	2.32	0.50
1:B:313:LEU:HA	1:B:334:PHE:HB3	1.93	0.50
1:A:90:VAL:HG21	1:A:289:THR:HG22	1.93	0.50
1:A:102:ARG:HG2	1:A:102:ARG:O	2.11	0.50
1:A:264:ALA:HB1	1:A:265:PRO:HD2	1.92	0.50
1:C:175:LEU:HD23	1:C:176:LEU:N	2.27	0.50
1:C:76:ASP:O	1:C:77:ASP:HB2	2.10	0.50
1:B:325:ASN:O	1:B:326:ASN:HB3	2.11	0.50
1:A:231:PHE:HD2	1:A:250:TYR:HB3	1.77	0.49
1:B:274:LEU:HA	1:B:279:ILE:HD13	1.93	0.49
1:A:103:GLY:O	1:A:104:ALA:HB3	2.12	0.49
1:B:82:LYS:HE3	4:B:703:HOH:O	2.12	0.49
1:D:34:LEU:C	1:D:34:LEU:HD23	2.32	0.49
1:B:316:LEU:O	1:B:320:ILE:HG12	2.12	0.49
1:C:103:GLY:O	1:C:104:ALA:HB3	2.12	0.49
1:D:307:VAL:HG23	1:D:307:VAL:O	2.12	0.49

Continued on next page...

Continued from previous page...

Atom-1	Atom-2	Interatomic distance (Å)	Clash overlap (Å)
1:A:289:THR:OG1	1:B:102:ARG:HD2	2.13	0.48
1:C:34:LEU:C	1:C:34:LEU:HD23	2.33	0.48
1:C:10:PHE:HB3	1:C:18:LEU:HD11	1.93	0.48
1:A:113:PHE:CZ	1:D:276:LEU:HD21	2.48	0.48
1:B:276:LEU:HD21	1:C:113:PHE:CE2	2.47	0.48
1:C:269:PHE:CD2	1:C:274:LEU:HD13	2.49	0.48
1:C:66:GLU:HA	1:C:153:THR:OG1	2.13	0.48
1:B:168:VAL:CG1	1:B:195:ALA:HB2	2.43	0.48
1:C:151:ALA:HB2	1:C:308:VAL:HG21	1.95	0.48
1:A:178:GLY:HA2	1:A:201:ASP:OD2	2.14	0.48
1:C:38:VAL:HB	1:C:336:PRO:HG2	1.95	0.48
1:D:169:SER:OG	1:D:171:THR:HG22	2.14	0.48
1:C:170:PRO:HA	1:C:194:GLY:C	2.33	0.48
1:A:185:ASN:O	1:A:189:VAL:HG23	2.13	0.48
1:A:307:VAL:HG23	1:A:307:VAL:O	2.13	0.48
1:D:155:ALA:HB2	1:D:331:ARG:NH1	2.29	0.48
1:A:311:ALA:O	1:A:334:PHE:HA	2.14	0.47
1:B:90:VAL:HG21	1:B:289:THR:HG22	1.96	0.47
1:B:76:ASP:O	1:B:77:ASP:HB2	2.15	0.47
1:B:34:LEU:CD1	1:B:131:VAL:HB	2.45	0.47
1:D:48:LEU:HD11	1:D:323:LEU:HG	1.96	0.47
1:D:200:LEU:HD13	1:D:200:LEU:C	2.35	0.47
1:B:309:ARG:HH11	1:B:332:VAL:HG22	1.79	0.47
1:D:178:GLY:HA2	1:D:201:ASP:OD2	2.15	0.47
1:C:182:LEU:N	1:C:182:LEU:HD12	2.29	0.47
1:C:185:ASN:O	1:C:189:VAL:HG23	2.15	0.47
1:B:157:LEU:HA	1:B:295:VAL:HG21	1.97	0.46
1:B:79:ILE:HD13	4:B:702:HOH:O	2.15	0.46
1:D:170:PRO:HA	1:D:194:GLY:C	2.36	0.46
1:D:286:TRP:HB3	1:D:287:GLY:H	1.52	0.46
1:B:169:SER:HB2	1:B:170:PRO:CD	2.45	0.46
1:D:76:ASP:O	1:D:77:ASP:HB2	2.16	0.46
1:B:236:ASP:OD2	1:B:239:SER:HA	2.16	0.46
1:C:3:ILE:HG13	4:C:596:HOH:O	2.14	0.46
1:C:324:ARG:C	1:C:325:ASN:HD22	2.19	0.46
1:A:169:SER:HB2	1:A:170:PRO:CD	2.46	0.46
1:A:268:SER:HA	1:D:268:SER:HA	1.98	0.46
1:A:189:VAL:O	1:A:192:ALA:HB3	2.16	0.45
1:A:264:ALA:HB2	4:A:713:HOH:O	2.16	0.45
1:C:203:LYS:O	1:C:207:ARG:HD3	2.17	0.45
1:D:30:LYS:O	1:D:75:GLY:HA3	2.17	0.45

Continued on next page...

Continued from previous page...

Atom-1	Atom-2	Interatomic distance (Å)	Clash overlap (Å)
1:A:163:ILE:HD13	1:A:235:PHE:CE2	2.52	0.45
1:C:147:ASP:CB	1:C:333:VAL:HG21	2.46	0.45
1:D:207:ARG:HD2	1:D:218:VAL:HG12	1.99	0.45
1:D:49:HIS:HA	1:D:53:GLU:HB2	1.98	0.45
1:A:231:PHE:O	1:A:252:GLU:HG2	2.17	0.45
1:B:34:LEU:C	1:B:34:LEU:HD22	2.36	0.45
1:B:138:SER:OG	1:B:296:LEU:HD12	2.17	0.45
1:C:181:GLY:HA2	4:C:686:HOH:O	2.16	0.45
1:D:95:CYS:HA	1:D:133:ARG:HH21	1.82	0.45
1:B:140:ILE:HD12	1:B:149:ALA:HB1	1.98	0.45
1:B:309:ARG:HD2	4:B:646:HOH:O	2.16	0.45
1:A:331:ARG:HH11	1:A:331:ARG:HG3	1.82	0.44
1:B:200:LEU:CD1	1:B:222:LEU:HD13	2.46	0.44
1:A:328:TYR:HB2	1:A:329:GLU:H	1.65	0.44
1:C:323:LEU:HD13	1:C:330:GLY:N	2.32	0.44
1:C:91:GLY:HA3	1:C:286:TRP:CZ2	2.53	0.44
1:D:157:LEU:HA	1:D:295:VAL:HG21	1.99	0.44
1:D:3:ILE:N	1:D:3:ILE:CD1	2.79	0.44
1:A:52:TYR:CD2	1:A:324:ARG:HD2	2.52	0.44
1:A:90:VAL:HB	1:A:136:ASN:HB3	1.99	0.44
1:B:321:GLU:O	1:B:324:ARG:HB3	2.17	0.44
1:C:229:GLY:HA2	1:C:251:VAL:O	2.18	0.44
1:A:174:ILE:CG2	1:A:233:ALA:HB3	2.42	0.44
1:B:307:VAL:HG23	1:B:307:VAL:O	2.17	0.44
1:A:309:ARG:CB	1:A:309:ARG:HH11	2.30	0.44
1:B:13:ASN:HB3	1:B:16:SER:OG	2.17	0.44
1:C:82:LYS:O	1:C:82:LYS:HD2	2.16	0.44
1:B:239:SER:O	1:B:263:GLY:HA3	2.18	0.44
1:B:200:LEU:HD12	1:B:222:LEU:HD13	2.00	0.44
1:D:189:VAL:O	1:D:192:ALA:HB3	2.17	0.44
1:A:312:LYS:CG	1:A:315:GLU:HG3	2.48	0.44
1:A:326:ASN:O	1:A:327:ALA:HB3	2.18	0.44
1:A:169:SER:OG	1:A:171:THR:HG22	2.18	0.43
1:A:323:LEU:HD12	1:A:327:ALA:HB2	2.00	0.43
1:A:82:LYS:HG3	1:A:85:ASP:OD2	2.18	0.43
1:B:3:ILE:N	1:B:4:PRO:HD2	2.32	0.43
1:C:42:GLY:H	1:C:66:GLU:HB2	1.83	0.43
1:D:226:ILE:HG22	1:D:226:ILE:O	2.18	0.43
1:A:278:GLU:OE2	1:D:161:HIS:HE1	2.01	0.43
1:B:231:PHE:CD2	1:B:250:TYR:HB3	2.53	0.43
1:D:90:VAL:HG21	1:D:289:THR:HG22	2.01	0.43

Continued on next page...

Continued from previous page...

Atom-1	Atom-2	Interatomic distance (Å)	Clash overlap (Å)
1:C:211:LYS:HG2	4:C:639:HOH:O	2.18	0.43
1:A:200:LEU:CD1	1:A:222:LEU:HD13	2.48	0.43
1:D:313:LEU:HA	1:D:334:PHE:HB3	2.00	0.43
1:A:38:VAL:CG1	1:A:336:PRO:HG2	2.48	0.43
1:C:123:GLY:O	1:C:129:LEU:HD13	2.18	0.43
1:C:3:ILE:O	1:C:3:ILE:HG22	2.19	0.43
1:D:103:GLY:O	1:D:104:ALA:HB3	2.19	0.43
1:D:156:VAL:CG1	1:D:295:VAL:HG13	2.49	0.43
1:C:240:VAL:HG12	1:C:243:THR:OG1	2.18	0.43
1:D:91:GLY:HA3	1:D:286:TRP:CZ2	2.54	0.43
1:A:295:VAL:O	1:A:299:VAL:HG23	2.19	0.43
1:A:34:LEU:HG	1:A:71:VAL:HG13	2.01	0.43
1:B:240:VAL:HG13	1:B:243:THR:H	1.83	0.43
1:B:161:HIS:CE1	1:C:278:GLU:OE2	2.69	0.43
1:B:223:PRO:HG2	1:B:226:ILE:HG12	1.99	0.43
1:B:324:ARG:C	1:B:325:ASN:HD22	2.21	0.43
1:B:38:VAL:HB	1:B:336:PRO:HG2	2.00	0.43
1:B:91:GLY:HA3	1:B:286:TRP:CZ2	2.54	0.42
1:C:170:PRO:HA	1:C:194:GLY:O	2.18	0.42
1:A:258:MET:SD	1:A:282:LEU:HB2	2.60	0.42
1:A:157:LEU:HA	1:A:295:VAL:HG21	2.01	0.42
1:C:151:ALA:O	1:C:155:ALA:HB3	2.20	0.42
1:D:309:ARG:HG3	1:D:309:ARG:HH11	1.84	0.42
1:B:185:ASN:O	1:B:189:VAL:HG23	2.18	0.42
1:D:90:VAL:HG22	1:D:292:LEU:HD23	2.02	0.42
1:B:103:GLY:O	1:B:104:ALA:HB3	2.18	0.42
1:D:92:PRO:HB2	4:D:513:HOH:O	2.19	0.42
1:A:260:VAL:HB	4:A:700:HOH:O	2.19	0.42
1:A:91:GLY:HA3	1:A:286:TRP:CZ2	2.54	0.42
1:C:256:VAL:HG21	1:C:282:LEU:HD12	2.01	0.42
1:C:52:TYR:CD2	1:C:324:ARG:HD2	2.55	0.42
1:A:15:GLN:OE1	1:A:15:GLN:N	2.53	0.42
1:B:88:ALA:CB	1:B:140:ILE:HD11	2.42	0.42
1:C:160:TYR:HA	1:C:189:VAL:HG11	2.01	0.42
1:C:67:ILE:HD12	1:C:124:GLY:CA	2.46	0.42
1:A:222:LEU:HA	1:A:223:PRO:HD3	1.90	0.42
1:A:41:VAL:HG13	1:A:41:VAL:O	2.19	0.42
1:B:330:GLY:O	1:B:331:ARG:C	2.58	0.42
1:C:331:ARG:HH11	1:C:331:ARG:HA	1.85	0.42
1:C:110:LYS:HD3	4:C:631:HOH:O	2.19	0.42
1:C:93:ASN:ND2	1:C:133:ARG:NH1	2.68	0.42

Continued on next page...

Continued from previous page...

Atom-1	Atom-2	Interatomic distance (Å)	Clash overlap (Å)
1:A:102:ARG:O	1:B:104:ALA:HA	2.19	0.41
1:A:16:SER:HB2	1:A:19:LYS:HE3	2.01	0.41
1:C:294:ASP:O	1:C:298:LEU:HG	2.20	0.41
1:A:39:ASP:OD2	1:A:69:GLY:HA2	2.20	0.41
1:C:74:VAL:HG23	1:C:74:VAL:O	2.20	0.41
1:D:229:GLY:HA2	1:D:251:VAL:O	2.20	0.41
1:D:264:ALA:HA	1:D:265:PRO:HD3	1.88	0.41
1:A:203:LYS:O	1:A:207:ARG:HD3	2.20	0.41
1:B:268:SER:HA	1:C:268:SER:HA	2.02	0.41
1:A:275:ALA:O	1:D:285:PHE:HB2	2.21	0.41
1:D:200:LEU:HD23	1:D:222:LEU:HD12	2.02	0.41
1:A:209:GLN:O	1:A:213:LEU:HG	2.20	0.41
1:A:198:THR:HG23	1:A:217:ALA:HB3	2.02	0.41
1:A:313:LEU:HA	1:A:334:PHE:HB3	2.02	0.41
1:C:200:LEU:C	1:C:200:LEU:HD13	2.41	0.41
1:A:207:ARG:HB3	1:A:218:VAL:HG11	2.02	0.41
1:B:41:VAL:HA	1:B:66:GLU:O	2.20	0.41
1:A:101:CYS:C	1:A:103:GLY:N	2.74	0.41
1:B:176:LEU:CD2	1:B:235:PHE:HB2	2.51	0.40
1:C:311:ALA:O	1:C:334:PHE:HA	2.21	0.40
1:D:160:TYR:HA	1:D:189:VAL:HG11	2.03	0.40
1:B:264:ALA:HB1	1:B:265:PRO:HD2	2.02	0.40
1:B:46:SER:HA	1:B:49:HIS:HD2	1.85	0.40
1:B:82:LYS:HE2	1:B:85:ASP:OD1	2.21	0.40
1:C:42:GLY:HA3	1:C:66:GLU:OE1	2.22	0.40
1:D:175:LEU:HD22	1:D:177:ILE:HD11	2.02	0.40
1:A:255:GLY:O	1:A:280:ARG:HG2	2.22	0.40
1:D:163:ILE:HG23	1:D:168:VAL:HG21	2.03	0.40
1:D:242:ALA:O	1:D:246:VAL:HG23	2.22	0.40
1:A:106:ASP:HB3	1:A:135:ARG:HH12	1.86	0.40
1:A:67:ILE:HD13	1:A:67:ILE:N	2.36	0.40
1:C:41:VAL:HA	1:C:66:GLU:O	2.21	0.40
1:C:80:ASN:O	1:C:139:ARG:NH2	2.54	0.40
1:D:248:GLN:HA	1:D:257:ILE:HD11	2.03	0.40

There are no symmetry-related clashes.

5.3 Torsion angles ⓘ

5.3.1 Protein backbone ⓘ

In the following table, the Percentiles column shows the percent Ramachandran outliers of the chain as a percentile score with respect to all X-ray entries followed by that with respect to entries of similar resolution.

The Analysed column shows the number of residues for which the backbone conformation was analysed, and the total number of residues.

Mol	Chain	Analysed	Favoured	Allowed	Outliers	Percentiles	
1	A	333/341 (98%)	300 (90%)	32 (10%)	1 (0%)	44	55
1	B	332/341 (97%)	311 (94%)	19 (6%)	2 (1%)	28	34
1	C	329/341 (96%)	304 (92%)	22 (7%)	3 (1%)	20	23
1	D	328/341 (96%)	307 (94%)	18 (6%)	3 (1%)	20	23
All	All	1322/1364 (97%)	1222 (92%)	91 (7%)	9 (1%)	25	30

All (9) Ramachandran outliers are listed below:

Mol	Chain	Res	Type
1	B	327	ALA
1	A	263	GLY
1	C	91	GLY
1	C	83	VAL
1	D	225	SER
1	C	54	GLY
1	D	91	GLY
1	B	91	GLY
1	D	54	GLY

5.3.2 Protein sidechains ⓘ

In the following table, the Percentiles column shows the percent sidechain outliers of the chain as a percentile score with respect to all X-ray entries followed by that with respect to entries of similar resolution.

The Analysed column shows the number of residues for which the sidechain conformation was analysed, and the total number of residues.

Mol	Chain	Analysed	Rotameric	Outliers	Percentiles	
1	A	269/270 (100%)	263 (98%)	6 (2%)	57	74
1	B	268/270 (99%)	261 (97%)	7 (3%)	51	69

Continued on next page...

Continued from previous page...

Mol	Chain	Analysed	Rotameric	Outliers	Percentiles	
1	C	267/270 (99%)	262 (98%)	5 (2%)	62	78
1	D	267/270 (99%)	263 (98%)	4 (2%)	70	83
All	All	1071/1080 (99%)	1049 (98%)	22 (2%)	59	76

All (22) residues with a non-rotameric sidechain are listed below:

Mol	Chain	Res	Type
1	A	77	ASP
1	A	82	LYS
1	A	113	PHE
1	A	211	LYS
1	A	286	TRP
1	A	328	TYR
1	B	34	LEU
1	B	79	ILE
1	B	82	LYS
1	B	175	LEU
1	B	191	LYS
1	B	205	GLU
1	B	274	LEU
1	C	34	LEU
1	C	82	LYS
1	C	191	LYS
1	C	205	GLU
1	C	286	TRP
1	D	3	ILE
1	D	82	LYS
1	D	175	LEU
1	D	286	TRP

Some sidechains can be flipped to improve hydrogen bonding and reduce clashes. All (29) such sidechains are listed below:

Mol	Chain	Res	Type
1	A	161	HIS
1	A	173	ASN
1	A	335	ASN
1	B	27	HIS
1	B	45	HIS
1	B	65	HIS
1	B	80	ASN

Continued on next page...

Continued from previous page...

Mol	Chain	Res	Type
1	B	161	HIS
1	B	167	GLN
1	B	173	ASN
1	B	325	ASN
1	B	335	ASN
1	C	15	GLN
1	C	65	HIS
1	C	80	ASN
1	C	111	ASN
1	C	161	HIS
1	C	167	GLN
1	C	173	ASN
1	C	185	ASN
1	C	209	GLN
1	C	325	ASN
1	C	335	ASN
1	D	13	ASN
1	D	127	GLN
1	D	161	HIS
1	D	167	GLN
1	D	173	ASN
1	D	335	ASN

5.3.3 RNA [i](#)

There are no RNA molecules in this entry.

5.4 Non-standard residues in protein, DNA, RNA chains [i](#)

There are no non-standard protein/DNA/RNA residues in this entry.

5.5 Carbohydrates [i](#)

There are no carbohydrates in this entry.

5.6 Ligand geometry [i](#)

Of 12 ligands modelled in this entry, 8 are monoatomic - leaving 4 for Mogul analysis.

In the following table, the Counts columns list the number of bonds (or angles) for which Mogul statistics could be retrieved, the number of bonds (or angles) that are observed in the model and

the number of bonds (or angles) that are defined in the Chemical Component Dictionary. The Link column lists molecule types, if any, to which the group is linked. The Z score for a bond length (or angle) is the number of standard deviations the observed value is removed from the expected value. A bond length (or angle) with $|Z| > 2$ is considered an outlier worth inspection. RMSZ is the root-mean-square of all Z scores of the bond lengths (or angles).

Mol	Type	Chain	Res	Link	Bond lengths			Bond angles		
					Counts	RMSZ	# Z > 2	Counts	RMSZ	# Z > 2
2	FEH	A	401	-	9,10,10	3.15	7 (77%)	9,12,12	2.10	1 (11%)
2	FEH	B	401	-	9,10,10	3.17	7 (77%)	9,12,12	2.10	1 (11%)
2	FEH	C	401	-	9,10,10	3.16	7 (77%)	9,12,12	2.10	1 (11%)
2	FEH	D	401	-	9,10,10	3.14	7 (77%)	9,12,12	2.03	1 (11%)

In the following table, the Chirals column lists the number of chiral outliers, the number of chiral centers analysed, the number of these observed in the model and the number defined in the Chemical Component Dictionary. Similar counts are reported in the Torsion and Rings columns. '-' means no outliers of that kind were identified.

Mol	Type	Chain	Res	Link	Chirals	Torsions	Rings
2	FEH	A	401	-	-	0/6/6/6	0/1/1/1
2	FEH	B	401	-	-	0/6/6/6	0/1/1/1
2	FEH	C	401	-	-	0/6/6/6	0/1/1/1
2	FEH	D	401	-	-	0/6/6/6	0/1/1/1

All (28) bond length outliers are listed below:

Mol	Chain	Res	Type	Atoms	Z	Observed(Å)	Ideal(Å)
2	B	401	FEH	C2-C1	-5.57	1.41	1.51
2	A	401	FEH	C2-C1	-5.53	1.41	1.51
2	C	401	FEH	C2-C1	-5.51	1.41	1.51
2	D	401	FEH	C2-C1	-5.45	1.41	1.51
2	B	401	FEH	C6-C7	2.40	1.43	1.38
2	D	401	FEH	C6-C7	2.44	1.44	1.38
2	A	401	FEH	C6-C7	2.44	1.44	1.38
2	C	401	FEH	C6-C7	2.46	1.44	1.38
2	C	401	FEH	C5-C6	2.60	1.44	1.38
2	B	401	FEH	C5-C6	2.61	1.44	1.38
2	A	401	FEH	C5-C6	2.61	1.44	1.38
2	D	401	FEH	C5-C6	2.62	1.44	1.38
2	A	401	FEH	C7-C8	2.77	1.44	1.38
2	A	401	FEH	C5-C4	2.78	1.44	1.38
2	C	401	FEH	C5-C4	2.78	1.44	1.38
2	B	401	FEH	C5-C4	2.79	1.44	1.38
2	C	401	FEH	C7-C8	2.79	1.44	1.38

Continued on next page...

Continued from previous page...

Mol	Chain	Res	Type	Atoms	Z	Observed(Å)	Ideal(Å)
2	D	401	FEH	C7-C8	2.79	1.44	1.38
2	B	401	FEH	C7-C8	2.80	1.44	1.38
2	D	401	FEH	C5-C4	2.82	1.44	1.38
2	D	401	FEH	C8-C2	3.72	1.45	1.39
2	A	401	FEH	C8-C2	3.74	1.45	1.39
2	C	401	FEH	C8-C2	3.79	1.45	1.39
2	B	401	FEH	C8-C2	3.80	1.45	1.39
2	B	401	FEH	C4-C2	4.03	1.45	1.39
2	D	401	FEH	C4-C2	4.03	1.45	1.39
2	A	401	FEH	C4-C2	4.04	1.45	1.39
2	C	401	FEH	C4-C2	4.06	1.45	1.39

All (4) bond angle outliers are listed below:

Mol	Chain	Res	Type	Atoms	Z	Observed(°)	Ideal(°)
2	C	401	FEH	O1-C1-C2	-5.62	97.80	111.13
2	A	401	FEH	O1-C1-C2	-5.60	97.85	111.13
2	B	401	FEH	O1-C1-C2	-5.60	97.86	111.13
2	D	401	FEH	O1-C1-C2	-5.41	98.31	111.13

There are no chirality outliers.

There are no torsion outliers.

There are no ring outliers.

No monomer is involved in short contacts.

5.7 Other polymers [i](#)

There are no such residues in this entry.

5.8 Polymer linkage issues [i](#)

There are no chain breaks in this entry.

6 Fit of model and data ⓘ

6.1 Protein, DNA and RNA chains ⓘ

In the following table, the column labelled ‘#RSRZ> 2’ contains the number (and percentage) of RSRZ outliers, followed by percent RSRZ outliers for the chain as percentile scores relative to all X-ray entries and entries of similar resolution. The OWAB column contains the minimum, median, 95th percentile and maximum values of the occupancy-weighted average B-factor per residue. The column labelled ‘Q< 0.9’ lists the number of (and percentage) of residues with an average occupancy less than 0.9.

Mol	Chain	Analysed	<RSRZ>	#RSRZ>2	OWAB(Å ²)	Q<0.9
1	A	335/341 (98%)	0.34	23 (6%) 18 23	15, 28, 58, 84	0
1	B	334/341 (97%)	0.01	10 (2%) 51 58	11, 21, 43, 76	0
1	C	333/341 (97%)	0.40	26 (7%) 14 19	12, 29, 62, 90	0
1	D	332/341 (97%)	0.08	10 (3%) 51 58	9, 24, 49, 63	0
All	All	1334/1364 (97%)	0.21	69 (5%) 28 35	9, 26, 56, 90	0

All (69) RSRZ outliers are listed below:

Mol	Chain	Res	Type	RSRZ
1	B	327	ALA	10.0
1	C	330	GLY	8.5
1	B	328	TYR	8.0
1	C	328	TYR	7.6
1	B	330	GLY	6.1
1	C	181	GLY	5.7
1	A	330	GLY	5.7
1	D	79	ILE	5.4
1	A	328	TYR	5.2
1	C	326	ASN	4.8
1	B	326	ASN	4.8
1	A	326	ASN	4.6
1	A	329	GLU	4.5
1	A	182	LEU	4.4
1	C	79	ILE	4.3
1	C	180	GLY	4.3
1	A	2	SER	3.9
1	A	327	ALA	3.8
1	B	182	LEU	3.8
1	A	181	GLY	3.7
1	C	184	GLY	3.6

Continued on next page...

Continued from previous page...

Mol	Chain	Res	Type	RSRZ
1	C	15	GLN	3.5
1	D	31	ALA	3.5
1	D	14	LYS	3.3
1	B	79	ILE	3.3
1	C	183	GLY	3.3
1	B	180	GLY	3.2
1	D	78	VAL	3.1
1	C	14	LYS	3.1
1	A	15	GLN	3.0
1	C	3	ILE	3.0
1	D	15	GLN	3.0
1	A	205	GLU	3.0
1	A	31	ALA	3.0
1	A	21	ARG	2.9
1	C	179	ALA	2.9
1	A	309	ARG	2.9
1	A	67	ILE	2.8
1	C	332	VAL	2.7
1	C	331	ARG	2.6
1	A	226	ILE	2.6
1	C	76	ASP	2.6
1	D	327	ALA	2.6
1	C	17	GLY	2.5
1	C	327	ALA	2.4
1	B	181	GLY	2.4
1	A	204	LYS	2.4
1	C	54	GLY	2.4
1	A	79	ILE	2.4
1	C	325	ASN	2.4
1	D	4	PRO	2.4
1	C	19	LYS	2.4
1	D	3	ILE	2.4
1	B	331	ARG	2.3
1	D	309	ARG	2.3
1	C	67	ILE	2.3
1	A	80	ASN	2.3
1	C	45	HIS	2.3
1	B	329	GLU	2.3
1	C	74	VAL	2.3
1	A	218	VAL	2.3
1	C	182	LEU	2.2
1	A	180	GLY	2.2

Continued on next page...

Continued from previous page...

Mol	Chain	Res	Type	RSRZ
1	C	5	SER	2.2
1	D	76	ASP	2.2
1	A	318	GLU	2.1
1	A	41	VAL	2.1
1	C	309	ARG	2.1
1	A	102	ARG	2.0

6.2 Non-standard residues in protein, DNA, RNA chains [i](#)

There are no non-standard protein/DNA/RNA residues in this entry.

6.3 Carbohydrates [i](#)

There are no carbohydrates in this entry.

6.4 Ligands [i](#)

In the following table, the Atoms column lists the number of modelled atoms in the group and the number defined in the chemical component dictionary. LLDF column lists the quality of electron density of the group with respect to its neighbouring residues in protein, DNA or RNA chains. The B-factors column lists the minimum, median, 95th percentile and maximum values of B factors of atoms in the group. The column labelled 'Q< 0.9' lists the number of atoms with occupancy less than 0.9.

Mol	Type	Chain	Res	Atoms	RSCC	RSR	LLDF	B-factors(Å ²)	Q<0.9
2	FEH	A	401	10/10	0.80	0.27	5.76	45,46,49,52	0
2	FEH	D	401	10/10	0.81	0.26	5.43	26,32,34,39	0
2	FEH	B	401	10/10	0.74	0.23	5.00	37,39,42,49	0
2	FEH	C	401	10/10	0.79	0.25	2.53	42,43,44,47	0
3	ZN	B	402	1/1	0.99	0.05	-1.33	18,18,18,18	0
3	ZN	A	402	1/1	0.99	0.07	-1.37	24,24,24,24	0
3	ZN	C	403	1/1	0.99	0.06	-1.45	26,26,26,26	0
3	ZN	D	403	1/1	1.00	0.04	-2.00	18,18,18,18	0
3	ZN	A	403	1/1	0.99	0.04	-2.67	20,20,20,20	0
3	ZN	B	403	1/1	1.00	0.03	-2.94	18,18,18,18	0
3	ZN	C	402	1/1	1.00	0.03	-3.21	22,22,22,22	0
3	ZN	D	402	1/1	1.00	0.06	-3.90	18,18,18,18	0

6.5 Other polymers [i](#)

There are no such residues in this entry.