



# Full wwPDB X-ray Structure Validation Report ⓘ

Feb 13, 2017 – 01:24 pm GMT

PDB ID : 2WU1  
Title : GLUCOSAMINE-6-PHOSPHATE DEAMINASE COMPLEXED WITH  
THE ALLOSTERIC ACTIVATOR N-ACETYL-GLUCOAMINE-6-PHOSPH  
ATE BOTH IN THE ACTIVE AND ALLOSTERIC SITES.  
Authors : Rudino-Pinera, E.; Rojas-Trejo, S.P.; Horjales, E.  
Deposited on : 2009-09-25  
Resolution : 2.20 Å(reported)

This is a Full wwPDB X-ray Structure Validation Report for a publicly released PDB entry.

We welcome your comments at [validation@mail.wwpdb.org](mailto:validation@mail.wwpdb.org)

A user guide is available at

<http://wwpdb.org/validation/2016/XrayValidationReportHelp>

with specific help available everywhere you see the ⓘ symbol.

---

The following versions of software and data (see [references ⓘ](#)) were used in the production of this report:

MolProbity	:	4.02b-467
Mogul	:	1.7.2 (RC1), CSD as538be (2017)
Xtriage (Phenix)	:	1.9-1692
EDS	:	trunk28620
Percentile statistics	:	20161228.v01 (using entries in the PDB archive December 28th 2016)
Refmac	:	5.8.0135
CCP4	:	6.5.0
Ideal geometry (proteins)	:	Engh & Huber (2001)
Ideal geometry (DNA, RNA)	:	Parkinson et al. (1996)
Validation Pipeline (wwPDB-VP)	:	recalc28949

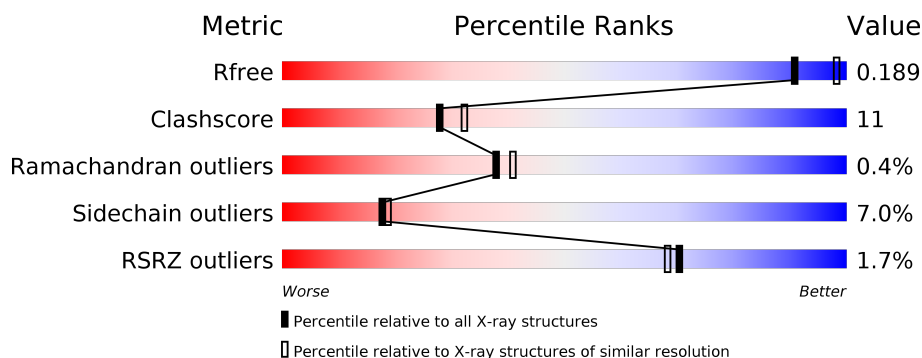
# 1 Overall quality at a glance

The following experimental techniques were used to determine the structure:

## *X-RAY DIFFRACTION*

The reported resolution of this entry is 2.20 Å.

Percentile scores (ranging between 0-100) for global validation metrics of the entry are shown in the following graphic. The table shows the number of entries on which the scores are based.



Metric	Whole archive (#Entries)	Similar resolution (#Entries, resolution range(Å))
$R_{free}$	100719	4002 (2.20-2.20)
Clashscore	112137	4730 (2.20-2.20)
Ramachandran outliers	110173	4656 (2.20-2.20)
Sidechain outliers	110143	4657 (2.20-2.20)
RSRZ outliers	101464	4033 (2.20-2.20)

The table below summarises the geometric issues observed across the polymeric chains and their fit to the electron density. The red, orange, yellow and green segments on the lower bar indicate the fraction of residues that contain outliers for  $\geq 3$ , 2, 1 and 0 types of geometric quality criteria. A grey segment represents the fraction of residues that are not modelled. The numeric value for each fraction is indicated below the corresponding segment, with a dot representing fractions  $\leq 5\%$ . The upper red bar (where present) indicates the fraction of residues that have poor fit to the electron density. The numeric value is given above the bar.

Mol	Chain	Length	Quality of chain
1	A	266	<div> <div></div> <div>79%</div> <div>17%</div> <div>•</div> </div>
1	B	266	<div> <div>3%</div> <div>83%</div> <div>15%</div> <div>•</div> </div>

The following table lists non-polymeric compounds, carbohydrate monomers and non-standard residues in protein, DNA, RNA chains that are outliers for geometric or electron-density-fit criteria:

Mol	Type	Chain	Res	Chirality	Geometry	Clashes	Electron density
3	FGS	A	1268	-	-	X	X
3	FGS	B	1568	-	-	X	X

## 2 Entry composition [i](#)

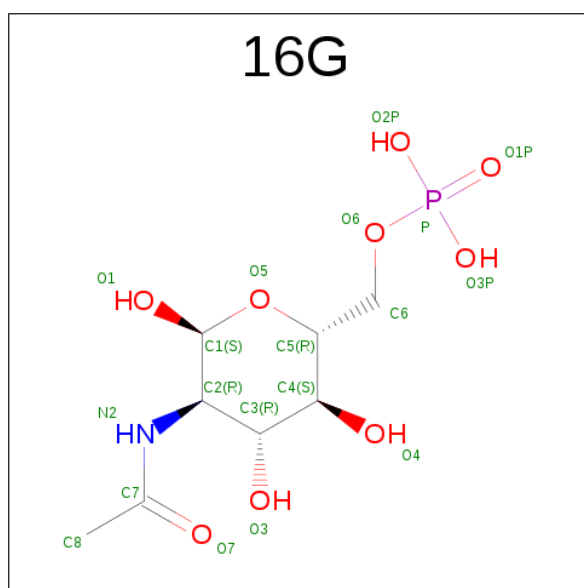
There are 4 unique types of molecules in this entry. The entry contains 4515 atoms, of which 0 are hydrogens and 0 are deuteriums.

In the tables below, the ZeroOcc column contains the number of atoms modelled with zero occupancy, the AltConf column contains the number of residues with at least one atom in alternate conformation and the Trace column contains the number of residues modelled with at most 2 atoms.

- Molecule 1 is a protein called GLUCOSAMINE-6-PHOSPHATE DEAMINASE.

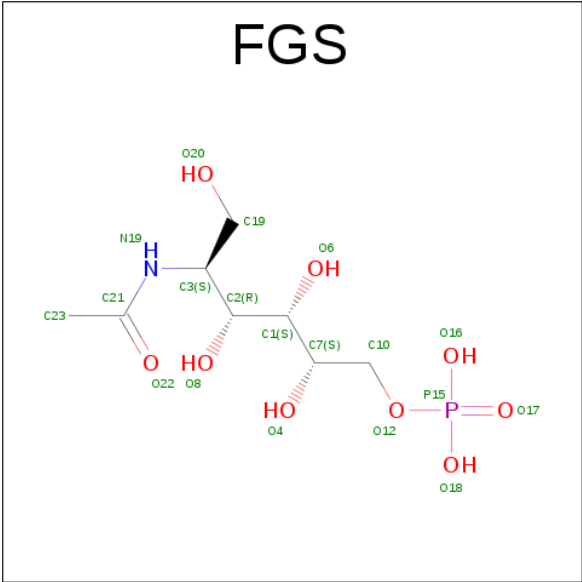
Mol	Chain	Residues	Atoms					ZeroOcc	AltConf	Trace
1	A	266	Total	C	N	O	S	0	0	0
			2092	1328	364	386	14			
1	B	266	Total	C	N	O	S	0	0	0
			2092	1328	364	386	14			

- Molecule 2 is SUGAR (N-ACETYL-D-GLUCOSAMINE-6-PHOSPHATE) (three-letter code: 16G) (formula:  $C_8H_{16}NO_9P$ ).



Mol	Chain	Residues	Atoms					ZeroOcc	AltConf
2	A	1	Total	C	N	O	P	0	0
			19	8	1	9	1		
2	B	1	Total	C	N	O	P	0	0
			19	8	1	9	1		

- Molecule 3 is 5-(ACETYLAMINO)-5-DEOXY-1-O-PHOSPHONO-L-IDITOL (three-letter code: FGS) (formula:  $C_8H_{18}NO_9P$ ).



Mol	Chain	Residues	Atoms					ZeroOcc	AltConf
3	A	1	Total	C	N	O	P	0	0
			19	8	1	9	1		
3	B	1	Total	C	N	O	P	0	0
			19	8	1	9	1		

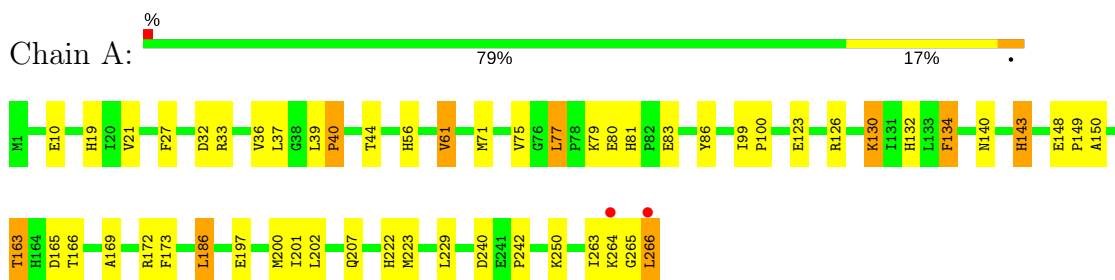
- Molecule 4 is water.

Mol	Chain	Residues	Atoms		ZeroOcc	AltConf
4	A	119	Total	O	0	0
			119	119		
4	B	136	Total	O	0	0
			136	136		

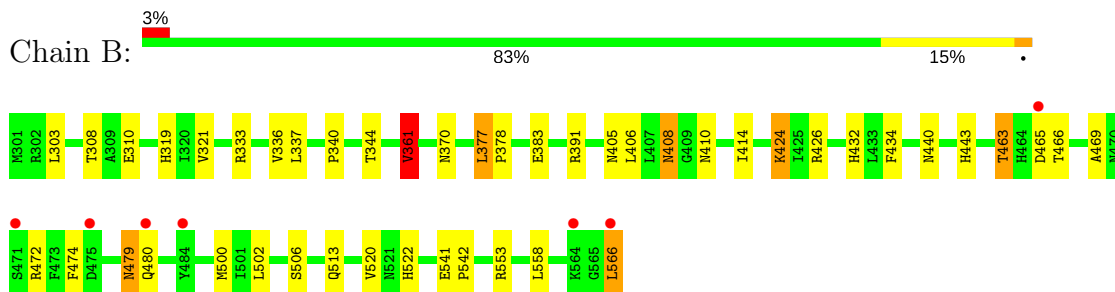
### 3 Residue-property plots [i](#)

These plots are drawn for all protein, RNA and DNA chains in the entry. The first graphic for a chain summarises the proportions of the various outlier classes displayed in the second graphic. The second graphic shows the sequence view annotated by issues in geometry and electron density. Residues are color-coded according to the number of geometric quality criteria for which they contain at least one outlier: green = 0, yellow = 1, orange = 2 and red = 3 or more. A red dot above a residue indicates a poor fit to the electron density ( $RSRZ > 2$ ). Stretches of 2 or more consecutive residues without any outlier are shown as a green connector. Residues present in the sample, but not in the model, are shown in grey.

#### • Molecule 1: GLUCOSAMINE-6-PHOSPHATE DEAMINASE



#### • Molecule 1: GLUCOSAMINE-6-PHOSPHATE DEAMINASE



## 4 Data and refinement statistics

Property	Value	Source
Space group	H 3 2	Depositor
Cell constants a, b, c, $\alpha$ , $\beta$ , $\gamma$	125.72Å 125.72Å 223.95Å 90.00° 90.00° 120.00°	Depositor
Resolution (Å)	9.98 – 2.20 9.98 – 2.20	Depositor EDS
% Data completeness (in resolution range)	91.3 (9.98-2.20) 91.3 (9.98-2.20)	Depositor EDS
$R_{merge}$	0.08	Depositor
$R_{sym}$	(Not available)	Depositor
$\langle I/\sigma(I) \rangle$ <sup>1</sup>	2.73 (at 2.19Å)	Xtriage
Refinement program	PHENIX (PHENIX.REFINE)	Depositor
R, $R_{free}$	0.149 , 0.191 0.144 , 0.189	Depositor DCC
$R_{free}$ test set	1576 reflections (5.02%)	DCC
Wilson B-factor (Å <sup>2</sup> )	27.5	Xtriage
Anisotropy	0.034	Xtriage
Bulk solvent $k_{sol}$ (e/Å <sup>3</sup> ), $B_{sol}$ (Å <sup>2</sup> )	0.37 , 58.4	EDS
L-test for twinning <sup>2</sup>	$\langle  L  \rangle = 0.51$ , $\langle L^2 \rangle = 0.35$	Xtriage
Estimated twinning fraction	No twinning to report.	Xtriage
$F_o, F_c$ correlation	0.97	EDS
Total number of atoms	4515	wwPDB-VP
Average B, all atoms (Å <sup>2</sup> )	35.0	wwPDB-VP

Xtriage's analysis on translational NCS is as follows: *The largest off-origin peak in the Patterson function is 4.06% of the height of the origin peak. No significant pseudotranslation is detected.*

<sup>1</sup>Intensities estimated from amplitudes.

<sup>2</sup>Theoretical values of  $\langle |L| \rangle$ ,  $\langle L^2 \rangle$  for acentric reflections are 0.5, 0.333 respectively for untwinned datasets, and 0.375, 0.2 for perfectly twinned datasets.

## 5 Model quality [i](#)

### 5.1 Standard geometry [i](#)

Bond lengths and bond angles in the following residue types are not validated in this section: 16G, FGS

The Z score for a bond length (or angle) is the number of standard deviations the observed value is removed from the expected value. A bond length (or angle) with  $|Z| > 5$  is considered an outlier worth inspection. RMSZ is the root-mean-square of all Z scores of the bond lengths (or angles).

Mol	Chain	Bond lengths		Bond angles	
		RMSZ	$\# Z  > 5$	RMSZ	$\# Z  > 5$
1	A	0.42	0/2139	0.57	0/2898
1	B	0.42	0/2139	0.58	1/2898 (0.0%)
All	All	0.42	0/4278	0.57	1/5796 (0.0%)

There are no bond length outliers.

All (1) bond angle outliers are listed below:

Mol	Chain	Res	Type	Atoms	Z	Observed(°)	Ideal(°)
1	B	361	VAL	CB-CA-C	-5.55	100.85	111.40

There are no chirality outliers.

There are no planarity outliers.

### 5.2 Too-close contacts [i](#)

In the following table, the Non-H and H(model) columns list the number of non-hydrogen atoms and hydrogen atoms in the chain respectively. The H(added) column lists the number of hydrogen atoms added and optimized by MolProbity. The Clashes column lists the number of clashes within the asymmetric unit, whereas Symm-Clashes lists symmetry related clashes.

Mol	Chain	Non-H	H(model)	H(added)	Clashes	Symm-Clashes
1	A	2092	0	2081	56	0
1	B	2092	0	2078	37	0
2	A	19	0	14	0	0
2	B	19	0	14	0	0
3	A	19	0	16	17	0
3	B	19	0	16	13	0
4	A	119	0	0	2	0
4	B	136	0	0	1	0

*Continued on next page...*



*Continued from previous page...*

Mol	Chain	Non-H	H(model)	H(added)	Clashes	Symm-Clashes
All	All	4515	0	4219	95	0

The all-atom clashscore is defined as the number of clashes found per 1000 atoms (including hydrogen atoms). The all-atom clashscore for this structure is 11.

All (95) close contacts within the same asymmetric unit are listed below, sorted by their clash magnitude.

Atom-1	Atom-2	Interatomic distance (Å)	Clash overlap (Å)
1:A:36:VAL:H	1:A:132:HIS:CD2	1.84	0.95
1:A:36:VAL:H	1:A:132:HIS:HD2	0.92	0.88
1:B:336:VAL:H	1:B:432:HIS:HD2	1.18	0.87
1:A:172:ARG:HH21	3:A:1268:FGS:H231	1.40	0.85
1:A:163:THR:HG22	1:A:166:THR:H	1.41	0.85
1:A:140:ASN:H	3:A:1268:FGS:H192	1.40	0.85
1:B:344:THR:OG1	3:B:1568:FGS:O17	1.95	0.84
1:B:308:THR:HG22	1:B:310:GLU:H	1.42	0.84
1:A:263:ILE:C	1:A:265:GLY:HA3	1.99	0.82
1:B:321:VAL:HG13	1:B:361:VAL:HG13	1.64	0.79
1:A:123:GLU:HG2	1:A:126:ARG:HH11	1.46	0.79
1:B:308:THR:HG22	1:B:310:GLU:N	1.98	0.78
1:A:172:ARG:HE	3:A:1268:FGS:H231	1.52	0.73
3:B:1568:FGS:H101	3:B:1568:FGS:H3	1.68	0.73
1:A:172:ARG:NH2	3:A:1268:FGS:H231	2.02	0.73
1:B:440:ASN:H	3:B:1568:FGS:H192	1.54	0.72
1:B:463:THR:HG22	1:B:466:THR:H	1.56	0.71
1:A:130:LYS:HE2	1:A:197:GLU:HB2	1.73	0.70
3:A:1268:FGS:H3	3:A:1268:FGS:H101	1.73	0.70
1:A:169:ALA:O	3:A:1268:FGS:H232	1.91	0.69
1:A:123:GLU:HG2	1:A:126:ARG:NH1	2.08	0.69
1:A:265:GLY:O	1:A:266:LEU:HD13	1.91	0.69
1:A:264:LYS:N	1:A:265:GLY:HA3	2.08	0.68
1:A:36:VAL:N	1:A:132:HIS:HD2	1.78	0.68
1:A:172:ARG:HE	3:A:1268:FGS:C23	2.09	0.66
1:B:308:THR:CG2	1:B:310:GLU:H	2.09	0.64
1:A:10:GLU:HB2	4:A:2009:HOH:O	1.98	0.63
1:A:250:LYS:HD3	4:A:2106:HOH:O	1.97	0.62
1:A:172:ARG:NE	3:A:1268:FGS:H231	2.13	0.62
1:A:81:HIS:CE1	1:A:83:GLU:HB2	2.33	0.62
1:A:143:HIS:CE1	3:A:1268:FGS:H2	2.35	0.61
1:B:443:HIS:NE2	3:B:1568:FGS:H2	2.16	0.60
1:A:150:ALA:HB2	1:A:223:MET:HE1	1.82	0.60

*Continued on next page...*

*Continued from previous page...*

Atom-1	Atom-2	Interatomic distance (Å)	Clash overlap (Å)
1:A:263:ILE:HG13	1:A:264:LYS:HG3	1.85	0.57
1:A:44:THR:OG1	3:A:1268:FGS:O17	2.17	0.57
1:A:140:ASN:H	3:A:1268:FGS:C19	2.16	0.56
1:B:466:THR:HG23	3:B:1568:FGS:O8	2.07	0.55
1:A:201:ILE:HG13	1:A:229:LEU:HD11	1.88	0.55
1:B:469:ALA:HB1	3:B:1568:FGS:N19	2.21	0.55
1:B:443:HIS:CE1	3:B:1568:FGS:H7	2.41	0.55
1:B:377:LEU:HD22	1:B:378:PRO:HD2	1.88	0.55
1:A:150:ALA:HB2	1:A:223:MET:CE	2.38	0.54
1:B:405:ASN:OD1	1:B:424:LYS:HE2	2.07	0.54
1:A:263:ILE:O	1:A:265:GLY:HA3	2.07	0.54
1:A:172:ARG:CZ	3:A:1268:FGS:H231	2.38	0.53
1:A:21:VAL:HG22	1:A:61:VAL:HG21	1.91	0.53
1:A:56:HIS:HD2	1:A:61:VAL:O	1.92	0.53
1:B:541:GLU:HB3	1:B:542:PRO:HD3	1.91	0.52
1:B:370:ASN:HB2	1:B:406:LEU:HD23	1.92	0.52
1:B:443:HIS:CE1	3:B:1568:FGS:H2	2.45	0.51
1:A:81:HIS:HE1	1:A:83:GLU:HB2	1.73	0.51
1:B:319:HIS:ND1	1:B:500:MET:CE	2.75	0.50
1:A:169:ALA:HB1	3:A:1268:FGS:H19	1.77	0.49
1:B:408:ASN:ND2	1:B:410:ASN:H	2.10	0.49
1:A:169:ALA:CB	3:A:1268:FGS:H19	2.26	0.49
1:B:319:HIS:ND1	1:B:500:MET:HE3	2.28	0.49
1:B:463:THR:HG23	1:B:465:ASP:H	1.76	0.48
1:B:472:ARG:NH2	3:B:1568:FGS:H231	2.29	0.48
1:A:169:ALA:HB1	3:A:1268:FGS:N19	2.28	0.48
1:A:27:PHE:O	1:A:33:ARG:NH2	2.47	0.48
1:B:506:SER:HB2	4:B:2119:HOH:O	2.15	0.47
1:B:443:HIS:HE1	3:B:1568:FGS:C7	2.27	0.47
1:A:140:ASN:N	3:A:1268:FGS:H192	2.19	0.47
1:B:426:ARG:HA	1:B:426:ARG:HD2	1.79	0.46
1:A:71:MET:HG2	1:A:134:PHE:CE1	2.51	0.46
1:A:163:THR:HG23	1:A:165:ASP:H	1.81	0.46
1:B:319:HIS:CG	1:B:500:MET:HE1	2.51	0.46
1:B:469:ALA:HB1	3:B:1568:FGS:H19	1.81	0.45
1:B:474:PHE:HB3	1:B:480:GLN:HB3	1.98	0.45
1:A:163:THR:HG22	1:A:166:THR:N	2.22	0.44
1:A:130:LYS:CE	1:A:197:GLU:HB2	2.46	0.44
1:B:479:ASN:N	1:B:479:ASN:OD1	2.50	0.44
1:B:558:LEU:HD23	1:B:558:LEU:HA	1.87	0.44
1:A:79:LYS:HD3	1:A:86:TYR:CE2	2.53	0.44

*Continued on next page...*

Continued from previous page...

Atom-1	Atom-2	Interatomic distance (Å)	Clash overlap (Å)
1:B:566:LEU:HA	1:B:566:LEU:HD13	1.81	0.44
1:B:443:HIS:CE1	3:B:1568:FGS:C7	3.01	0.44
1:A:148:GLU:OE2	1:A:163:THR:HB	2.17	0.43
1:A:21:VAL:HG22	1:A:61:VAL:CG2	2.48	0.43
1:A:148:GLU:HB3	1:A:149:PRO:HD2	2.00	0.43
1:A:240:ASP:CG	1:A:242:PRO:HD2	2.38	0.43
1:B:463:THR:HG23	1:B:465:ASP:N	2.34	0.43
1:B:303:LEU:HD23	1:B:303:LEU:C	2.40	0.42
1:A:83:GLU:HG3	1:A:173:PHE:O	2.20	0.42
1:A:130:LYS:NZ	1:A:197:GLU:CD	2.73	0.42
1:A:39:LEU:HA	1:A:40:PRO:HD3	1.88	0.41
1:A:172:ARG:HH21	3:A:1268:FGS:C23	2.21	0.41
1:A:19:HIS:CG	1:A:200:MET:HE1	2.56	0.41
1:B:408:ASN:C	1:B:408:ASN:HD22	2.23	0.41
1:A:99:ILE:HA	1:A:100:PRO:HD3	1.94	0.41
1:B:443:HIS:HE1	3:B:1568:FGS:C1	2.33	0.41
1:A:75:VAL:HG22	1:A:186:LEU:HD13	2.03	0.41
1:B:463:THR:CG2	1:B:466:THR:H	2.30	0.40
1:A:77:LEU:HD23	1:A:77:LEU:HA	1.96	0.40
1:A:143:HIS:C	1:A:143:HIS:CD2	2.95	0.40
1:A:263:ILE:CG1	1:A:264:LYS:HG3	2.51	0.40

There are no symmetry-related clashes.

## 5.3 Torsion angles ⓘ

### 5.3.1 Protein backbone ⓘ

In the following table, the Percentiles column shows the percent Ramachandran outliers of the chain as a percentile score with respect to all X-ray entries followed by that with respect to entries of similar resolution.

The Analysed column shows the number of residues for which the backbone conformation was analysed, and the total number of residues.

Mol	Chain	Analysed	Favoured	Allowed	Outliers	Percentiles	
1	A	264/266 (99%)	252 (96%)	11 (4%)	1 (0%)	38	41
1	B	264/266 (99%)	253 (96%)	10 (4%)	1 (0%)	38	41
All	All	528/532 (99%)	505 (96%)	21 (4%)	2 (0%)	38	41

All (2) Ramachandran outliers are listed below:

Mol	Chain	Res	Type
1	B	340	PRO
1	A	40	PRO

### 5.3.2 Protein sidechains ⓘ

In the following table, the Percentiles column shows the percent sidechain outliers of the chain as a percentile score with respect to all X-ray entries followed by that with respect to entries of similar resolution.

The Analysed column shows the number of residues for which the sidechain conformation was analysed, and the total number of residues.

Mol	Chain	Analysed	Rotameric	Outliers	Percentiles	
1	A	227/227 (100%)	213 (94%)	14 (6%)	21	24
1	B	227/227 (100%)	209 (92%)	18 (8%)	14	14
All	All	454/454 (100%)	422 (93%)	32 (7%)	18	19

All (32) residues with a non-rotameric sidechain are listed below:

Mol	Chain	Res	Type
1	A	32	ASP
1	A	37	LEU
1	A	61	VAL
1	A	77	LEU
1	A	80	GLU
1	A	130	LYS
1	A	134	PHE
1	A	143	HIS
1	A	163	THR
1	A	186	LEU
1	A	202	LEU
1	A	207	GLN
1	A	222	HIS
1	A	266	LEU
1	B	333	ARG
1	B	337	LEU
1	B	361	VAL
1	B	377	LEU
1	B	383	GLU
1	B	391	ARG
1	B	408	ASN

*Continued on next page...*

*Continued from previous page...*

Mol	Chain	Res	Type
1	B	414	ILE
1	B	424	LYS
1	B	434	PHE
1	B	463	THR
1	B	479	ASN
1	B	502	LEU
1	B	513	GLN
1	B	520	VAL
1	B	522	HIS
1	B	553	ARG
1	B	566	LEU

Some sidechains can be flipped to improve hydrogen bonding and reduce clashes. All (12) such sidechains are listed below:

Mol	Chain	Res	Type
1	A	22	ASN
1	A	56	HIS
1	A	132	HIS
1	A	207	GLN
1	B	322	ASN
1	B	356	HIS
1	B	390	HIS
1	B	408	ASN
1	B	432	HIS
1	B	443	HIS
1	B	507	GLN
1	B	562	ASN

### 5.3.3 RNA ⓘ

There are no RNA molecules in this entry.

## 5.4 Non-standard residues in protein, DNA, RNA chains ⓘ

There are no non-standard protein/DNA/RNA residues in this entry.

## 5.5 Carbohydrates ⓘ

There are no carbohydrates in this entry.

## 5.6 Ligand geometry

4 ligands are modelled in this entry.

In the following table, the Counts columns list the number of bonds (or angles) for which Mogul statistics could be retrieved, the number of bonds (or angles) that are observed in the model and the number of bonds (or angles) that are defined in the chemical component dictionary. The Link column lists molecule types, if any, to which the group is linked. The Z score for a bond length (or angle) is the number of standard deviations the observed value is removed from the expected value. A bond length (or angle) with  $|Z| > 2$  is considered an outlier worth inspection. RMSZ is the root-mean-square of all Z scores of the bond lengths (or angles).

Mol	Type	Chain	Res	Link	Bond lengths			Bond angles		
					Counts	RMSZ	# $ Z  > 2$	Counts	RMSZ	# $ Z  > 2$
2	16G	A	1267	-	19,19,19	1.70	4 (21%)	28,28,28	2.09	10 (35%)
3	FGS	A	1268	-	18,18,18	1.80	5 (27%)	21,25,25	1.50	3 (14%)
2	16G	B	1567	-	19,19,19	1.76	4 (21%)	28,28,28	2.08	10 (35%)
3	FGS	B	1568	-	18,18,18	1.77	5 (27%)	21,25,25	1.47	2 (9%)

In the following table, the Chirals column lists the number of chiral outliers, the number of chiral centers analysed, the number of these observed in the model and the number defined in the chemical component dictionary. Similar counts are reported in the Torsion and Rings columns. '-' means no outliers of that kind were identified.

Mol	Type	Chain	Res	Link	Chirals	Torsions	Rings
2	16G	A	1267	-	-	0/10/30/30	0/1/1/1
3	FGS	A	1268	-	-	0/24/24/24	0/0/0/0
2	16G	B	1567	-	-	0/10/30/30	0/1/1/1
3	FGS	B	1568	-	-	0/24/24/24	0/0/0/0

All (18) bond length outliers are listed below:

Mol	Chain	Res	Type	Atoms	Z	Observed(Å)	Ideal(Å)
2	A	1267	16G	O6-C6	-2.01	1.36	1.44
3	A	1268	FGS	C23-C21	2.21	1.55	1.50
2	B	1567	16G	C4-C5	2.28	1.57	1.53
3	B	1568	FGS	C23-C21	2.39	1.55	1.50
3	B	1568	FGS	P15-O18	2.44	1.64	1.54
3	B	1568	FGS	C10-C7	2.45	1.55	1.51
3	A	1268	FGS	P15-O18	2.47	1.65	1.54
2	A	1267	16G	P-O2P	2.48	1.65	1.54
2	B	1567	16G	P-O2P	2.89	1.66	1.54
3	A	1268	FGS	C10-C7	2.95	1.56	1.51
2	B	1567	16G	C7-N2	3.04	1.45	1.34

*Continued on next page...*

*Continued from previous page...*

Mol	Chain	Res	Type	Atoms	Z	Observed(Å)	Ideal(Å)
3	A	1268	FGS	P15-O16	3.06	1.67	1.54
3	B	1568	FGS	P15-O16	3.07	1.67	1.54
2	A	1267	16G	C7-N2	3.19	1.46	1.34
3	A	1268	FGS	C21-N19	3.51	1.47	1.34
3	B	1568	FGS	C21-N19	3.53	1.47	1.34
2	A	1267	16G	P-O1P	3.98	1.64	1.50
2	B	1567	16G	P-O1P	4.04	1.64	1.50

All (25) bond angle outliers are listed below:

Mol	Chain	Res	Type	Atoms	Z	Observed(°)	Ideal(°)
2	A	1267	16G	O5-C5-C6	-2.82	101.01	106.64
2	B	1567	16G	C2-N2-C7	-2.61	116.59	123.19
2	B	1567	16G	O6-P-O1P	-2.60	99.17	106.47
2	A	1267	16G	O6-P-O1P	-2.31	99.98	106.47
3	A	1268	FGS	O12-C10-C7	2.01	114.73	109.36
2	A	1267	16G	O5-C5-C4	2.02	113.39	109.66
2	B	1567	16G	C3-C2-N2	2.07	114.58	110.61
2	B	1567	16G	C1-O5-C5	2.11	117.20	113.39
2	B	1567	16G	O2P-P-O6	2.20	112.58	106.73
2	A	1267	16G	C3-C2-N2	2.44	115.28	110.61
3	B	1568	FGS	C19-C3-N19	2.81	114.29	109.38
2	A	1267	16G	C1-O5-C5	2.85	118.53	113.39
3	A	1268	FGS	C19-C3-N19	2.93	114.51	109.38
3	B	1568	FGS	O20-C19-C3	2.97	118.66	111.12
2	B	1567	16G	O3-C3-C2	3.01	115.71	109.61
3	A	1268	FGS	O20-C19-C3	3.25	119.39	111.12
2	A	1267	16G	O4-C4-C5	3.28	117.56	109.28
2	B	1567	16G	O5-C5-C4	3.31	115.76	109.66
2	A	1267	16G	O2P-P-O6	3.44	115.90	106.73
2	B	1567	16G	O1-C1-C2	3.83	117.18	109.22
2	B	1567	16G	O4-C4-C5	3.85	119.00	109.28
2	A	1267	16G	O4-C4-C3	3.93	118.91	110.36
2	A	1267	16G	C3-C4-C5	3.99	117.25	110.22
2	A	1267	16G	O1-C1-C2	4.49	118.55	109.22
2	B	1567	16G	C3-C4-C5	4.51	118.16	110.22

There are no chirality outliers.

There are no torsion outliers.

There are no ring outliers.

2 monomers are involved in 30 short contacts:

Mol	Chain	Res	Type	Clashes	Symm-Clashes
3	A	1268	FGS	17	0
3	B	1568	FGS	13	0

## 5.7 Other polymers [i](#)

There are no such residues in this entry.

## 5.8 Polymer linkage issues [i](#)

There are no chain breaks in this entry.



## 6 Fit of model and data [i](#)

### 6.1 Protein, DNA and RNA chains [i](#)

In the following table, the column labelled ‘#RSRZ > 2’ contains the number (and percentage) of RSRZ outliers, followed by percent RSRZ outliers for the chain as percentile scores relative to all X-ray entries and entries of similar resolution. The OWAB column contains the minimum, median, 95<sup>th</sup> percentile and maximum values of the occupancy-weighted average B-factor per residue. The column labelled ‘Q < 0.9’ lists the number of (and percentage) of residues with an average occupancy less than 0.9.

Mol	Chain	Analysed	<RSRZ>	#RSRZ>2	OWAB(Å <sup>2</sup> )	Q<0.9
1	A	266/266 (100%)	-0.92	2 (0%) 86 85	17, 29, 60, 98	0
1	B	266/266 (100%)	-0.85	7 (2%) 56 54	17, 27, 68, 105	0
All	All	532/532 (100%)	-0.88	9 (1%) 70 68	17, 29, 64, 105	0

All (9) RSRZ outliers are listed below:

Mol	Chain	Res	Type	RSRZ
1	A	266	LEU	5.1
1	B	566	LEU	3.6
1	A	264	LYS	2.8
1	B	475	ASP	2.8
1	B	465	ASP	2.4
1	B	484	TYR	2.2
1	B	564	LYS	2.2
1	B	471	SER	2.1
1	B	480	GLN	2.0

### 6.2 Non-standard residues in protein, DNA, RNA chains [i](#)

There are no non-standard protein/DNA/RNA residues in this entry.

### 6.3 Carbohydrates [i](#)

There are no carbohydrates in this entry.

### 6.4 Ligands [i](#)

In the following table, the Atoms column lists the number of modelled atoms in the group and the number defined in the chemical component dictionary. LLDF column lists the quality of electron

density of the group with respect to its neighbouring residues in protein, DNA or RNA chains. The B-factors column lists the minimum, median, 95<sup>th</sup> percentile and maximum values of B factors of atoms in the group. The column labelled 'Q< 0.9' lists the number of atoms with occupancy less than 0.9.

Mol	Type	Chain	Res	Atoms	RSCC	RSR	LLDF	B-factors(Å <sup>2</sup> )	Q<0.9
3	FGS	A	1268	19/19	0.83	0.27	4.79	46,69,97,98	19
3	FGS	B	1568	19/19	0.81	0.33	3.11	29,52,87,88	19
2	16G	B	1567	19/19	0.98	0.10	0.22	23,35,45,48	0
2	16G	A	1267	19/19	0.98	0.07	0.19	17,28,36,36	0

## 6.5 Other polymers

There are no such residues in this entry.