



# Full wwPDB X-ray Structure Validation Report ⓘ

Feb 14, 2017 – 01:16 am GMT

PDB ID : 3WUH  
Title : Qri7 and AMP complex  
Authors : Tominaga, T.; Kobayashi, K.; Ishii, R.; Ishitani, R.; Nureki, O.  
Deposited on : 2014-04-24  
Resolution : 2.94 Å(reported)

This is a Full wwPDB X-ray Structure Validation Report for a publicly released PDB entry.

We welcome your comments at [validation@mail.wwpdb.org](mailto:validation@mail.wwpdb.org)

A user guide is available at

<http://wwpdb.org/validation/2016/XrayValidationReportHelp>

with specific help available everywhere you see the ⓘ symbol.

---

The following versions of software and data (see [references ⓘ](#)) were used in the production of this report:

MolProbity : 4.02b-467  
Mogul : 1.7.2 (RC1), CSD as538be (2017)  
Xtriage (Phenix) : 1.9-1692  
EDS : trunk28620  
Percentile statistics : 20161228.v01 (using entries in the PDB archive December 28th 2016)  
Refmac : 5.8.0135  
CCP4 : 6.5.0  
Ideal geometry (proteins) : Engh & Huber (2001)  
Ideal geometry (DNA, RNA) : Parkinson et al. (1996)  
Validation Pipeline (wwPDB-VP) : recalc28949

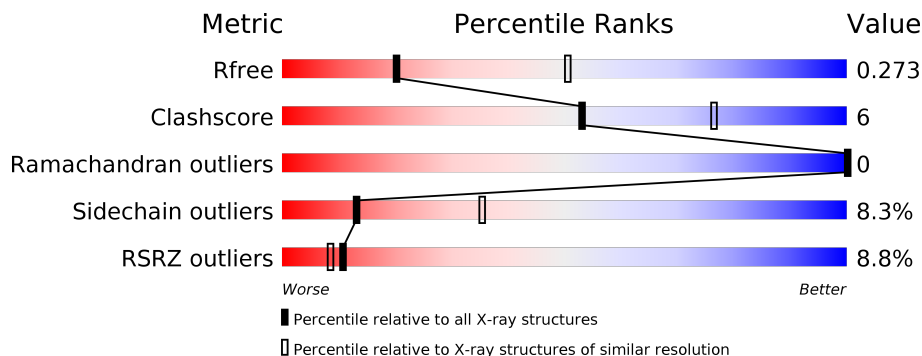
# 1 Overall quality at a glance

The following experimental techniques were used to determine the structure:

## *X-RAY DIFFRACTION*

The reported resolution of this entry is 2.94 Å.

Percentile scores (ranging between 0-100) for global validation metrics of the entry are shown in the following graphic. The table shows the number of entries on which the scores are based.



Metric	Whole archive (#Entries)	Similar resolution (#Entries, resolution range(Å))
$R_{free}$	100719	2289 (2.98-2.90)
Clashscore	112137	2543 (2.98-2.90)
Ramachandran outliers	110173	2475 (2.98-2.90)
Sidechain outliers	110143	2477 (2.98-2.90)
RSRZ outliers	101464	2301 (2.98-2.90)

The table below summarises the geometric issues observed across the polymeric chains and their fit to the electron density. The red, orange, yellow and green segments on the lower bar indicate the fraction of residues that contain outliers for  $\geq 3$ , 2, 1 and 0 types of geometric quality criteria. A grey segment represents the fraction of residues that are not modelled. The numeric value for each fraction is indicated below the corresponding segment, with a dot representing fractions  $\leq 5\%$ . The upper red bar (where present) indicates the fraction of residues that have poor fit to the electron density. The numeric value is given above the bar.

Mol	Chain	Length	Quality of chain
1	A	383	
1	B	383	

## 2 Entry composition

There are 4 unique types of molecules in this entry. The entry contains 5279 atoms, of which 0 are hydrogens and 0 are deuteriums.

In the tables below, the ZeroOcc column contains the number of atoms modelled with zero occupancy, the AltConf column contains the number of residues with at least one atom in alternate conformation and the Trace column contains the number of residues modelled with at most 2 atoms.

- Molecule 1 is a protein called tRNA N6-adenosine threonylcarbamoyltransferase, mitochondrial.

Mol	Chain	Residues	Atoms					ZeroOcc	AltConf	Trace
1	A	344	Total	C	N	O	S	0	0	0
			2589	1641	447	484	17			
1	B	350	Total	C	N	O	S	0	0	0
			2640	1681	452	490	17			

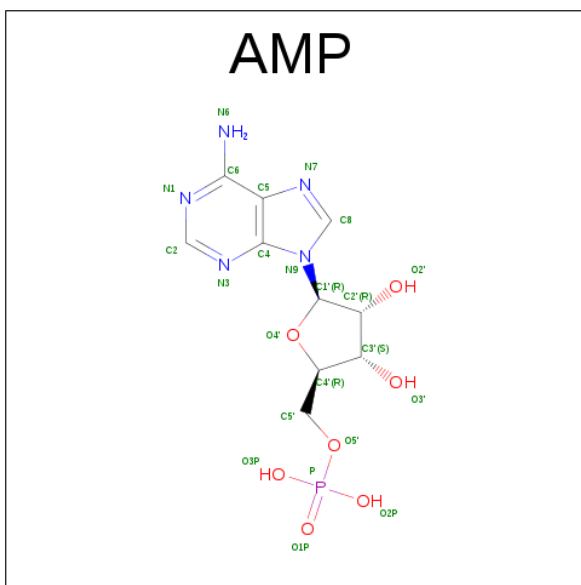
There are 10 discrepancies between the modelled and reference sequences:

Chain	Residue	Modelled	Actual	Comment	Reference
A	25	GLY	-	EXPRESSION TAG	UNP P43122
A	26	PRO	-	EXPRESSION TAG	UNP P43122
A	27	LEU	-	EXPRESSION TAG	UNP P43122
A	28	HIS	-	EXPRESSION TAG	UNP P43122
A	29	MET	-	EXPRESSION TAG	UNP P43122
B	25	GLY	-	EXPRESSION TAG	UNP P43122
B	26	PRO	-	EXPRESSION TAG	UNP P43122
B	27	LEU	-	EXPRESSION TAG	UNP P43122
B	28	HIS	-	EXPRESSION TAG	UNP P43122
B	29	MET	-	EXPRESSION TAG	UNP P43122

- Molecule 2 is ZINC ION (three-letter code: ZN) (formula: Zn).

Mol	Chain	Residues	Atoms		ZeroOcc	AltConf
2	B	1	Total	Zn	0	0
			1	1		
2	A	1	Total	Zn	0	0
			1	1		

- Molecule 3 is ADENOSINE MONOPHOSPHATE (three-letter code: AMP) (formula: C<sub>10</sub>H<sub>14</sub>N<sub>5</sub>O<sub>7</sub>P).



Mol	Chain	Residues	Atoms					ZeroOcc	AltConf
3	A	1	Total	C	N	O	P	0	0
			23	10	5	7	1		
3	B	1	Total	C	N	O	P	0	0
			23	10	5	7	1		

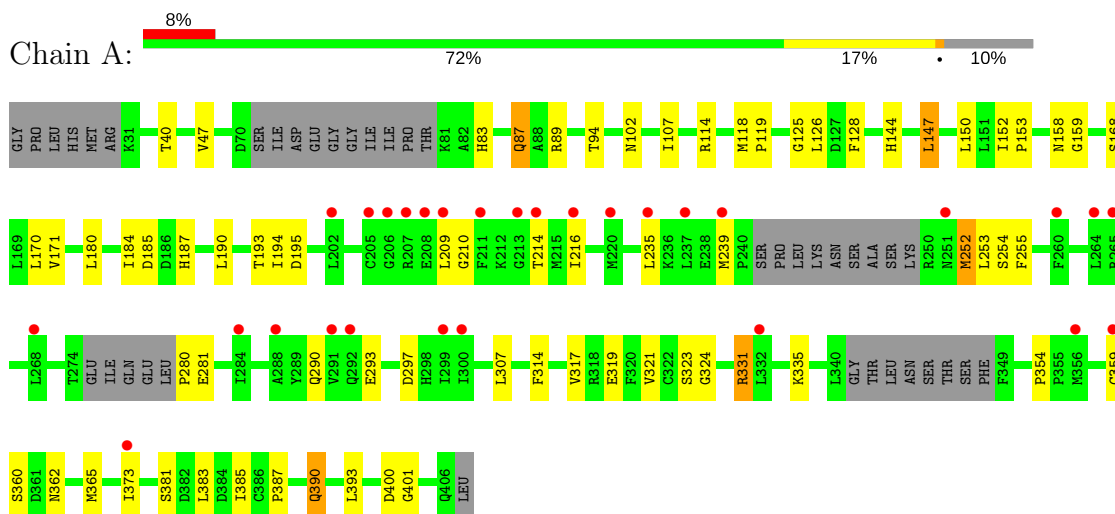
- Molecule 4 is water.

Mol	Chain	Residues	Atoms		ZeroOcc	AltConf
4	A	1	Total	O	0	0
			1	1		
4	B	1	Total	O	0	0
			1	1		

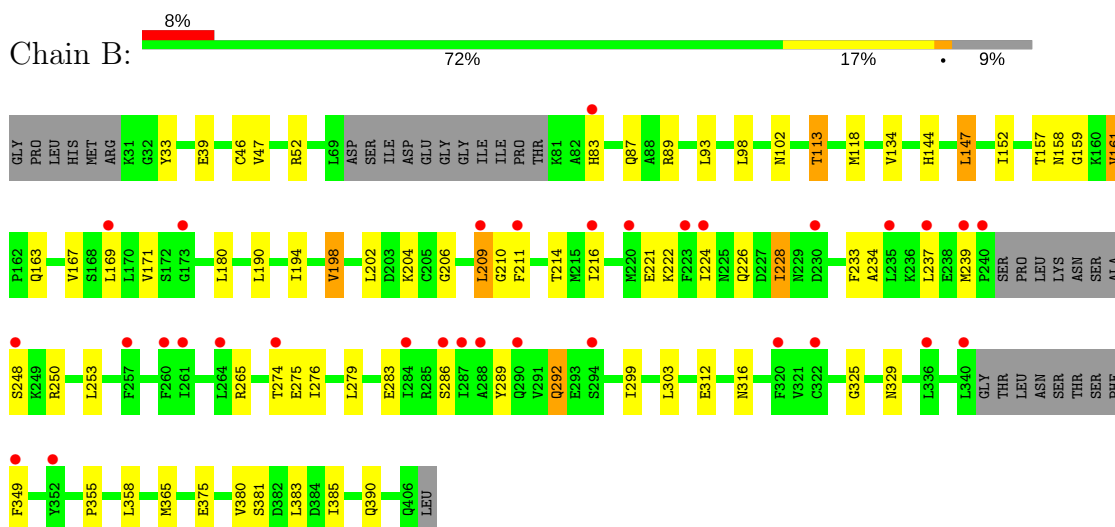
### 3 Residue-property plots

These plots are drawn for all protein, RNA and DNA chains in the entry. The first graphic for a chain summarises the proportions of the various outlier classes displayed in the second graphic. The second graphic shows the sequence view annotated by issues in geometry and electron density. Residues are color-coded according to the number of geometric quality criteria for which they contain at least one outlier: green = 0, yellow = 1, orange = 2 and red = 3 or more. A red dot above a residue indicates a poor fit to the electron density ( $RSRZ > 2$ ). Stretches of 2 or more consecutive residues without any outlier are shown as a green connector. Residues present in the sample, but not in the model, are shown in grey.

- Molecule 1: tRNA N6-adenosine threonylcarbamoyltransferase, mitochondrial



- Molecule 1: tRNA N6-adenosine threonylcarbamoyltransferase, mitochondrial



## 4 Data and refinement statistics

Property	Value	Source
Space group	P 43 3 2	Depositor
Cell constants a, b, c, $\alpha$ , $\beta$ , $\gamma$	180.31Å 180.31Å 180.31Å 90.00° 90.00° 90.00°	Depositor
Resolution (Å)	50.01 – 2.94 50.01 – 2.94	Depositor EDS
% Data completeness (in resolution range)	99.2 (50.01-2.94) 99.3 (50.01-2.94)	Depositor EDS
$R_{merge}$	(Not available)	Depositor
$R_{sym}$	(Not available)	Depositor
$\langle I/\sigma(I) \rangle$ <sup>1</sup>	4.80 (at 2.96Å)	Xtriage
Refinement program	PHENIX (phenix.refine: 1.8.3_1479)	Depositor
R, $R_{free}$	0.223 , 0.273 0.223 , 0.273	Depositor DCC
$R_{free}$ test set	1120 reflections (5.14%)	DCC
Wilson B-factor (Å <sup>2</sup> )	89.2	Xtriage
Anisotropy	0.000	Xtriage
Bulk solvent $k_{sol}$ (e/Å <sup>3</sup> ), $B_{sol}$ (Å <sup>2</sup> )	0.33 , 84.2	EDS
L-test for twinning <sup>2</sup>	$\langle  L  \rangle = 0.52$ , $\langle L^2 \rangle = 0.36$	Xtriage
Estimated twinning fraction	No twinning to report.	Xtriage
$F_o, F_c$ correlation	0.93	EDS
Total number of atoms	5279	wwPDB-VP
Average B, all atoms (Å <sup>2</sup> )	98.0	wwPDB-VP

Xtriage's analysis on translational NCS is as follows: *The largest off-origin peak in the Patterson function is 2.07% of the height of the origin peak. No significant pseudotranslation is detected.*

<sup>1</sup>Intensities estimated from amplitudes.

<sup>2</sup>Theoretical values of  $\langle |L| \rangle$ ,  $\langle L^2 \rangle$  for acentric reflections are 0.5, 0.333 respectively for untwinned datasets, and 0.375, 0.2 for perfectly twinned datasets.

## 5 Model quality

### 5.1 Standard geometry

Bond lengths and bond angles in the following residue types are not validated in this section: AMP, ZN

The Z score for a bond length (or angle) is the number of standard deviations the observed value is removed from the expected value. A bond length (or angle) with  $|Z| > 5$  is considered an outlier worth inspection. RMSZ is the root-mean-square of all Z scores of the bond lengths (or angles).

Mol	Chain	Bond lengths		Bond angles	
		RMSZ	$\# Z  > 5$	RMSZ	$\# Z  > 5$
1	A	0.21	0/2637	0.37	0/3575
1	B	0.22	0/2690	0.40	0/3649
All	All	0.21	0/5327	0.39	0/7224

There are no bond length outliers.

There are no bond angle outliers.

There are no chirality outliers.

There are no planarity outliers.

### 5.2 Too-close contacts

In the following table, the Non-H and H(model) columns list the number of non-hydrogen atoms and hydrogen atoms in the chain respectively. The H(added) column lists the number of hydrogen atoms added and optimized by MolProbity. The Clashes column lists the number of clashes within the asymmetric unit, whereas Symm-Clashes lists symmetry related clashes.

Mol	Chain	Non-H	H(model)	H(added)	Clashes	Symm-Clashes
1	A	2589	0	2516	33	0
1	B	2640	0	2587	35	0
2	A	1	0	0	0	0
2	B	1	0	0	0	0
3	A	23	0	12	0	0
3	B	23	0	12	1	0
4	A	1	0	0	0	0
4	B	1	0	0	0	0
All	All	5279	0	5127	64	0

The all-atom clashscore is defined as the number of clashes found per 1000 atoms (including hydrogen atoms). The all-atom clashscore for this structure is 6.

All (64) close contacts within the same asymmetric unit are listed below, sorted by their clash magnitude.

Atom-1	Atom-2	Interatomic distance (Å)	Clash overlap (Å)
1:B:325:GLY:HA3	3:B:502:AMP:H5'2	1.79	0.63
1:B:157:THR:HG21	1:B:161:VAL:HG13	1.81	0.62
1:B:233:PHE:HA	1:B:234:ALA:HB3	1.82	0.61
1:B:204:LYS:HE2	1:B:265:ARG:HH12	1.68	0.59
1:B:198:VAL:HG11	1:B:299:ILE:HD11	1.86	0.57
1:A:209:LEU:N	1:A:210:GLY:HA2	2.19	0.57
1:B:355:PRO:HG2	1:B:358:LEU:HB2	1.88	0.55
1:A:297:ASP:OD1	1:A:335:LYS:NZ	2.34	0.55
1:B:248:SER:HB2	1:B:250:ARG:HG2	1.89	0.54
1:A:180:LEU:HB2	1:A:190:LEU:HD11	1.90	0.53
1:A:323:SER:HB3	1:A:354:PRO:HG2	1.90	0.53
1:B:224:ILE:HD11	1:B:289:TYR:HB2	1.91	0.53
1:A:324:GLY:H	1:A:359:CYS:HB2	1.74	0.53
1:B:144:HIS:HB3	1:B:147:LEU:HB2	1.90	0.53
1:B:206:GLY:O	1:B:211:PHE:N	2.38	0.52
1:A:293:GLU:OE1	1:A:331:ARG:NE	2.39	0.52
1:A:152:ILE:HD13	1:A:365:MET:HA	1.92	0.52
1:A:47:VAL:HG11	1:A:94:THR:HG22	1.90	0.51
1:A:153:PRO:HG2	1:A:321:VAL:HG11	1.92	0.51
1:A:253:LEU:HG	1:B:390:GLN:HG2	1.94	0.50
1:B:209:LEU:N	1:B:210:GLY:HA2	2.26	0.50
1:B:169:LEU:HD22	1:B:303:LEU:HD11	1.94	0.49
1:A:235:LEU:O	1:A:290:GLN:NE2	2.46	0.49
1:B:47:VAL:HG23	1:B:93:LEU:HD23	1.95	0.48
1:B:158:ASN:N	1:B:159:GLY:HA2	2.29	0.47
1:B:152:ILE:HD13	1:B:365:MET:HA	1.96	0.47
1:B:211:PHE:HB2	1:B:216:ILE:HG23	1.97	0.47
1:A:194:ILE:HG13	1:A:254:SER:HB3	1.97	0.47
1:A:114:ARG:NH2	1:A:400:ASP:O	2.33	0.46
1:B:52:ARG:NH2	1:B:158:ASN:OD1	2.37	0.46
1:A:150:LEU:HD23	1:A:170:LEU:HD21	1.96	0.46
1:B:39:GLU:HB3	1:B:46:CYS:HB2	1.98	0.46
1:B:274:THR:HA	1:B:275:GLU:HA	1.58	0.46
1:B:180:LEU:HB2	1:B:190:LEU:HD11	1.97	0.45
1:A:126:LEU:HD23	1:A:387:PRO:HD3	1.98	0.45
1:A:83:HIS:O	1:A:87:GLN:HB2	2.17	0.45
1:A:144:HIS:HB3	1:A:147:LEU:HB2	1.99	0.45
1:B:222:LYS:O	1:B:226:GLN:NE2	2.48	0.44
1:B:89:ARG:O	1:B:93:LEU:HB2	2.18	0.44
1:A:400:ASP:HA	1:A:401:GLY:HA2	1.66	0.44

*Continued on next page...*

Continued from previous page...

Atom-1	Atom-2	Interatomic distance (Å)	Clash overlap (Å)
1:A:216:ILE:HD12	1:A:216:ILE:H	1.83	0.43
1:B:276:ILE:HA	1:B:279:LEU:HD23	2.00	0.43
1:A:185:ASP:N	1:A:185:ASP:OD1	2.50	0.43
1:A:194:ILE:HG23	1:B:194:ILE:HD12	2.00	0.43
1:A:187:HIS:HB2	1:A:393:LEU:HG	2.00	0.43
1:A:307:LEU:HA	1:A:314:PHE:CE2	2.54	0.43
1:A:360:SER:O	1:A:362:ASN:ND2	2.50	0.43
1:B:292:GLN:OE1	1:B:329:ASN:ND2	2.40	0.43
1:A:158:ASN:HB3	1:A:159:GLY:H	1.61	0.43
1:A:381:SER:HB3	1:A:385:ILE:HD13	2.00	0.42
1:B:134:VAL:HG22	1:B:383:LEU:HD21	2.01	0.42
1:B:33:TYR:OH	1:B:375:GLU:OE2	2.27	0.42
1:A:40:THR:HG21	1:A:125:GLY:HA3	2.02	0.42
1:A:118:MET:HA	1:A:119:PRO:HD3	1.90	0.41
1:A:94:THR:HG21	1:A:128:PHE:CE2	2.56	0.41
1:B:381:SER:HB3	1:B:385:ILE:HD13	2.02	0.41
1:B:39:GLU:OE2	1:B:113:THR:HG21	2.21	0.41
1:B:228:ILE:H	1:B:228:ILE:HG13	1.51	0.41
1:A:390:GLN:HG2	1:B:253:LEU:HG	2.03	0.41
1:A:193:THR:HA	1:A:255:PHE:HB2	2.03	0.40
1:A:307:LEU:HA	1:A:314:PHE:HE2	1.86	0.40
1:B:224:ILE:HA	1:B:224:ILE:HD12	1.93	0.40
1:B:33:TYR:CZ	1:B:52:ARG:HG2	2.57	0.40
1:A:252:MET:N	1:B:390:GLN:OE1	2.55	0.40

There are no symmetry-related clashes.

## 5.3 Torsion angles [i](#)

### 5.3.1 Protein backbone [i](#)

In the following table, the Percentiles column shows the percent Ramachandran outliers of the chain as a percentile score with respect to all X-ray entries followed by that with respect to entries of similar resolution.

The Analysed column shows the number of residues for which the backbone conformation was analysed, and the total number of residues.

Mol	Chain	Analysed	Favoured	Allowed	Outliers	Percentiles
1	A	334/383 (87%)	313 (94%)	21 (6%)	0	<a href="#">100</a> <a href="#">100</a>

Continued on next page...

*Continued from previous page...*

Mol	Chain	Analysed	Favoured	Allowed	Outliers	Percentiles	
1	B	342/383 (89%)	319 (93%)	23 (7%)	0	100	100
All	All	676/766 (88%)	632 (94%)	44 (6%)	0	100	100

There are no Ramachandran outliers to report.

### 5.3.2 Protein sidechains ⓘ

In the following table, the Percentiles column shows the percent sidechain outliers of the chain as a percentile score with respect to all X-ray entries followed by that with respect to entries of similar resolution.

The Analysed column shows the number of residues for which the sidechain conformation was analysed, and the total number of residues.

Mol	Chain	Analysed	Rotameric	Outliers	Percentiles	
1	A	275/334 (82%)	255 (93%)	20 (7%)	16	42
1	B	282/334 (84%)	256 (91%)	26 (9%)	11	31
All	All	557/668 (83%)	511 (92%)	46 (8%)	13	35

All (46) residues with a non-rotameric sidechain are listed below:

Mol	Chain	Res	Type
1	A	87	GLN
1	A	89	ARG
1	A	102	ASN
1	A	107	ILE
1	A	147	LEU
1	A	168	SER
1	A	171	VAL
1	A	184	ILE
1	A	195	ASP
1	A	214	THR
1	A	239	MET
1	A	252	MET
1	A	280	PRO
1	A	281	GLU
1	A	317	VAL
1	A	319	GLU
1	A	331	ARG
1	A	373	ILE

*Continued on next page...*

*Continued from previous page...*

Mol	Chain	Res	Type
1	A	383	LEU
1	A	390	GLN
1	B	83	HIS
1	B	87	GLN
1	B	98	LEU
1	B	102	ASN
1	B	113	THR
1	B	118	MET
1	B	147	LEU
1	B	161	VAL
1	B	163	GLN
1	B	167	VAL
1	B	171	VAL
1	B	198	VAL
1	B	202	LEU
1	B	209	LEU
1	B	214	THR
1	B	221	GLU
1	B	228	ILE
1	B	237	LEU
1	B	239	MET
1	B	283	GLU
1	B	286	SER
1	B	292	GLN
1	B	312	GLU
1	B	316	ASN
1	B	349	PHE
1	B	380	VAL

Some sidechains can be flipped to improve hydrogen bonding and reduce clashes. There are no such sidechains identified.

### 5.3.3 RNA ⓘ

There are no RNA molecules in this entry.

## 5.4 Non-standard residues in protein, DNA, RNA chains ⓘ

There are no non-standard protein/DNA/RNA residues in this entry.

## 5.5 Carbohydrates [i](#)

There are no carbohydrates in this entry.

## 5.6 Ligand geometry [i](#)

Of 4 ligands modelled in this entry, 2 are monoatomic - leaving 2 for Mogul analysis.

In the following table, the Counts columns list the number of bonds (or angles) for which Mogul statistics could be retrieved, the number of bonds (or angles) that are observed in the model and the number of bonds (or angles) that are defined in the chemical component dictionary. The Link column lists molecule types, if any, to which the group is linked. The Z score for a bond length (or angle) is the number of standard deviations the observed value is removed from the expected value. A bond length (or angle) with  $|Z| > 2$  is considered an outlier worth inspection. RMSZ is the root-mean-square of all Z scores of the bond lengths (or angles).

Mol	Type	Chain	Res	Link	Bond lengths			Bond angles		
					Counts	RMSZ	$\# Z  > 2$	Counts	RMSZ	$\# Z  > 2$
3	AMP	A	502	-	22,25,25	0.95	1 (4%)	24,38,38	1.60	2 (8%)
3	AMP	B	502	-	22,25,25	0.94	1 (4%)	24,38,38	1.57	2 (8%)

In the following table, the Chirals column lists the number of chiral outliers, the number of chiral centers analysed, the number of these observed in the model and the number defined in the chemical component dictionary. Similar counts are reported in the Torsion and Rings columns. '-' means no outliers of that kind were identified.

Mol	Type	Chain	Res	Link	Chirals	Torsions	Rings
3	AMP	A	502	-	-	0/6/26/26	0/3/3/3
3	AMP	B	502	-	-	0/6/26/26	0/3/3/3

All (2) bond length outliers are listed below:

Mol	Chain	Res	Type	Atoms	Z	Observed(Å)	Ideal(Å)
3	B	502	AMP	C5-C4	3.12	1.47	1.40
3	A	502	AMP	C5-C4	3.17	1.47	1.40

All (4) bond angle outliers are listed below:

Mol	Chain	Res	Type	Atoms	Z	Observed(°)	Ideal(°)
3	A	502	AMP	N3-C2-N1	-5.92	123.70	128.86
3	B	502	AMP	N3-C2-N1	-5.88	123.74	128.86
3	A	502	AMP	C4-C5-N7	-3.05	106.47	109.41
3	B	502	AMP	C4-C5-N7	-2.95	106.56	109.41

There are no chirality outliers.

There are no torsion outliers.

There are no ring outliers.

1 monomer is involved in 1 short contact:

Mol	Chain	Res	Type	Clashes	Symm-Clashes
3	B	502	AMP	1	0

## 5.7 Other polymers [i](#)

There are no such residues in this entry.

## 5.8 Polymer linkage issues [i](#)

There are no chain breaks in this entry.

## 6 Fit of model and data

### 6.1 Protein, DNA and RNA chains

In the following table, the column labelled ‘#RSRZ> 2’ contains the number (and percentage) of RSRZ outliers, followed by percent RSRZ outliers for the chain as percentile scores relative to all X-ray entries and entries of similar resolution. The OWAB column contains the minimum, median, 95<sup>th</sup> percentile and maximum values of the occupancy-weighted average B-factor per residue. The column labelled ‘Q< 0.9’ lists the number of (and percentage) of residues with an average occupancy less than 0.9.

Mol	Chain	Analysed	<RSRZ>	#RSRZ>2		OWAB(Å <sup>2</sup> )	Q<0.9
1	A	344/383 (89%)	0.42	29 (8%)	12 9	54, 92, 151, 198	1 (0%)
1	B	350/383 (91%)	0.55	32 (9%)	10 8	51, 92, 163, 246	0
All	All	694/766 (90%)	0.49	61 (8%)	11 8	51, 92, 158, 246	1 (0%)

All (61) RSRZ outliers are listed below:

Mol	Chain	Res	Type	RSRZ
1	A	209	LEU	7.1
1	A	237	LEU	5.6
1	B	211	PHE	4.7
1	B	220	MET	4.5
1	A	207	ARG	4.1
1	A	214	THR	4.1
1	B	223	PHE	4.1
1	B	290	GLN	3.8
1	A	264	LEU	3.7
1	B	235	LEU	3.7
1	A	205	CYS	3.5
1	A	213	GLY	3.4
1	A	211	PHE	3.4
1	B	230	ASP	3.3
1	B	260	PHE	3.3
1	A	268	LEU	3.2
1	B	274	THR	3.2
1	B	340	LEU	3.2
1	A	220	MET	3.1
1	A	235	LEU	3.1
1	B	169	LEU	3.1
1	B	83	HIS	2.9
1	B	349	PHE	2.9
1	A	216	ILE	2.8

*Continued on next page...*

*Continued from previous page...*

Mol	Chain	Res	Type	RSRZ
1	B	264	LEU	2.8
1	B	240	PRO	2.8
1	B	336	LEU	2.7
1	B	322	CYS	2.7
1	B	294	SER	2.7
1	B	288	ALA	2.7
1	B	248	SER	2.7
1	A	284	ILE	2.6
1	B	261	ILE	2.6
1	B	237	LEU	2.6
1	A	292	GLN	2.6
1	B	173	GLY	2.6
1	A	202	LEU	2.5
1	A	265	ARG	2.5
1	B	257	PHE	2.5
1	B	320	PHE	2.5
1	B	209	LEU	2.5
1	A	208	GLU	2.5
1	B	287	ILE	2.5
1	A	373	ILE	2.4
1	A	356	MET	2.4
1	A	239	MET	2.4
1	A	206	GLY	2.4
1	A	359	CYS	2.4
1	B	216	ILE	2.3
1	A	299	ILE	2.3
1	B	352	TYR	2.3
1	A	300	ILE	2.2
1	A	288	ALA	2.2
1	B	286	SER	2.1
1	B	284	ILE	2.1
1	A	332	LEU	2.1
1	B	239	MET	2.1
1	A	291	VAL	2.1
1	A	260	PHE	2.1
1	B	224	ILE	2.1
1	A	251	ASN	2.0

## 6.2 Non-standard residues in protein, DNA, RNA chains ⓘ

There are no non-standard protein/DNA/RNA residues in this entry.

### 6.3 Carbohydrates [i](#)

There are no carbohydrates in this entry.

### 6.4 Ligands [i](#)

In the following table, the Atoms column lists the number of modelled atoms in the group and the number defined in the chemical component dictionary. LLDF column lists the quality of electron density of the group with respect to its neighbouring residues in protein, DNA or RNA chains. The B-factors column lists the minimum, median, 95<sup>th</sup> percentile and maximum values of B factors of atoms in the group. The column labelled 'Q < 0.9' lists the number of atoms with occupancy less than 0.9.

Mol	Type	Chain	Res	Atoms	RSCC	RSR	LLDF	B-factors(Å <sup>2</sup> )	Q<0.9
3	AMP	A	502	23/23	0.88	0.28	0.33	108,116,129,141	0
3	AMP	B	502	23/23	0.92	0.18	-0.50	96,112,127,134	0
2	ZN	A	501	1/1	0.98	0.18	-1.19	105,105,105,105	0
2	ZN	B	501	1/1	0.99	0.14	-	89,89,89,89	0

### 6.5 Other polymers [i](#)

There are no such residues in this entry.