



# wwPDB X-ray Structure Validation Summary Report ⓘ

Feb 13, 2017 – 10:40 pm GMT

PDB ID : 4WW3  
Title : Crystal structure of the lumi intermediate of squid rhodopsin  
Authors : Murakami, M.; Kouyama, T.  
Deposited on : 2014-11-10  
Resolution : 2.80 Å(reported)

This is a wwPDB X-ray Structure Validation Summary Report for a publicly released PDB entry.

We welcome your comments at [validation@mail.wwpdb.org](mailto:validation@mail.wwpdb.org)

A user guide is available at

<http://wwpdb.org/validation/2016/XrayValidationReportHelp>

with specific help available everywhere you see the ⓘ symbol.

---

The following versions of software and data (see [references ⓘ](#)) were used in the production of this report:

MolProbity : 4.02b-467  
Mogul : 1.7.2 (RC1), CSD as538be (2017)  
Xtriage (Phenix) : 1.9-1692  
EDS : trunk28620  
Percentile statistics : 20161228.v01 (using entries in the PDB archive December 28th 2016)  
Refmac : 5.8.0135  
CCP4 : 6.5.0  
Ideal geometry (proteins) : Engh & Huber (2001)  
Ideal geometry (DNA, RNA) : Parkinson et al. (1996)  
Validation Pipeline (wwPDB-VP) : recalc28949

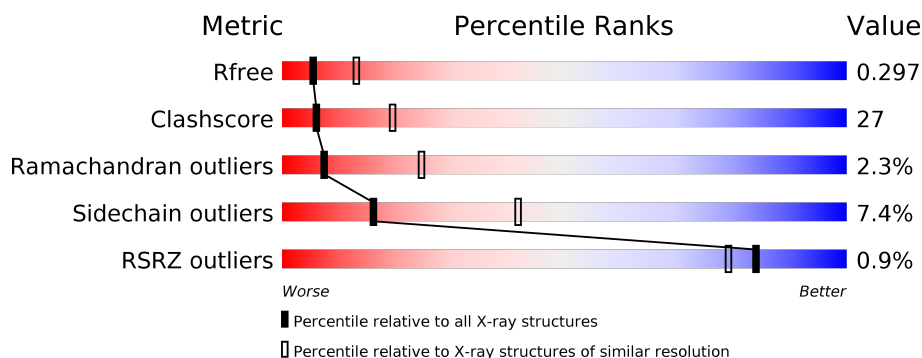
# 1 Overall quality at a glance ⓘ

The following experimental techniques were used to determine the structure:

## *X-RAY DIFFRACTION*

The reported resolution of this entry is 2.80 Å.

Percentile scores (ranging between 0-100) for global validation metrics of the entry are shown in the following graphic. The table shows the number of entries on which the scores are based.



Metric	Whole archive (#Entries)	Similar resolution (#Entries, resolution range(Å))
$R_{free}$	100719	2583 (2.80-2.80)
Clashscore	112137	3033 (2.80-2.80)
Ramachandran outliers	110173	2983 (2.80-2.80)
Sidechain outliers	110143	2985 (2.80-2.80)
RSRZ outliers	101464	2610 (2.80-2.80)

The table below summarises the geometric issues observed across the polymeric chains and their fit to the electron density. The red, orange, yellow and green segments on the lower bar indicate the fraction of residues that contain outliers for  $\geq 3$ , 2, 1 and 0 types of geometric quality criteria. A grey segment represents the fraction of residues that are not modelled. The numeric value for each fraction is indicated below the corresponding segment, with a dot representing fractions  $\leq 5\%$ . The upper red bar (where present) indicates the fraction of residues that have poor fit to the electron density. The numeric value is given above the bar.

Mol	Chain	Length	Quality of chain
1	A	350	<div> <div></div> <div>46%</div> <div>49%</div> <div>5%</div> </div>
1	B	350	<div> <div>49%</div> <div>45%</div> <div>5%</div> </div>

The following table lists non-polymeric compounds, carbohydrate monomers and non-standard residues in protein, DNA, RNA chains that are outliers for geometric or electron-density-fit criteria:

Mol	Type	Chain	Res	Chirality	Geometry	Clashes	Electron density
2	RET	A	401	-	-	-	X
3	PLM	A	403	-	-	-	X
3	PLM	B	403	-	-	-	X
3	PLM	B	404	-	-	-	X
4	TWT	A	404	-	-	-	X
4	TWT	B	405	-	-	-	X
5	BOG	B	407	-	-	-	X
7	PC1	B	406	-	-	-	X

## 2 Entry composition [i](#)

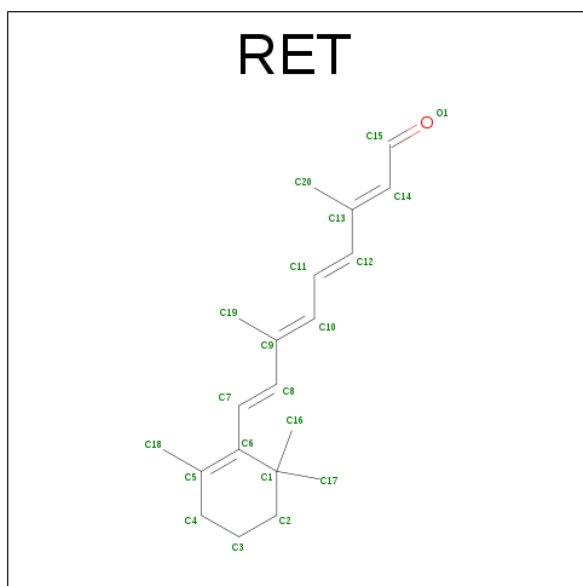
There are 8 unique types of molecules in this entry. The entry contains 5838 atoms, of which 0 are hydrogens and 0 are deuteriums.

In the tables below, the ZeroOcc column contains the number of atoms modelled with zero occupancy, the AltConf column contains the number of residues with at least one atom in alternate conformation and the Trace column contains the number of residues modelled with at most 2 atoms.

- Molecule 1 is a protein called Rhodopsin.

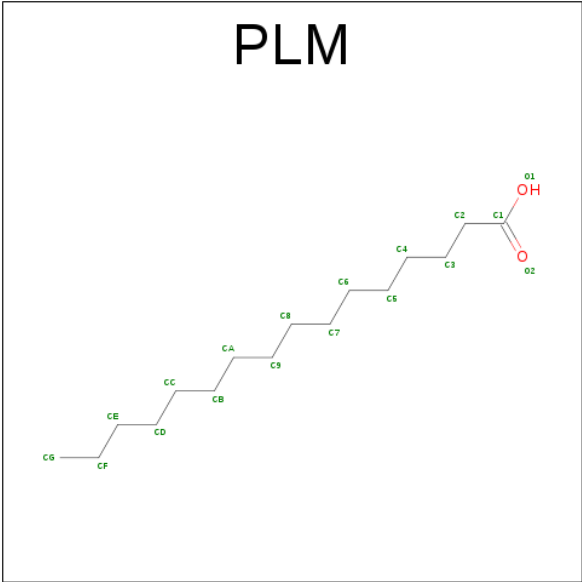
Mol	Chain	Residues	Atoms					ZeroOcc	AltConf	Trace
1	A	350	Total	C	N	O	S	0	0	0
			2781	1838	443	474	26			
1	B	347	Total	C	N	O	S	0	0	0
			2762	1828	440	468	26			

- Molecule 2 is RETINAL (three-letter code: RET) (formula:  $C_{20}H_{28}O$ ).



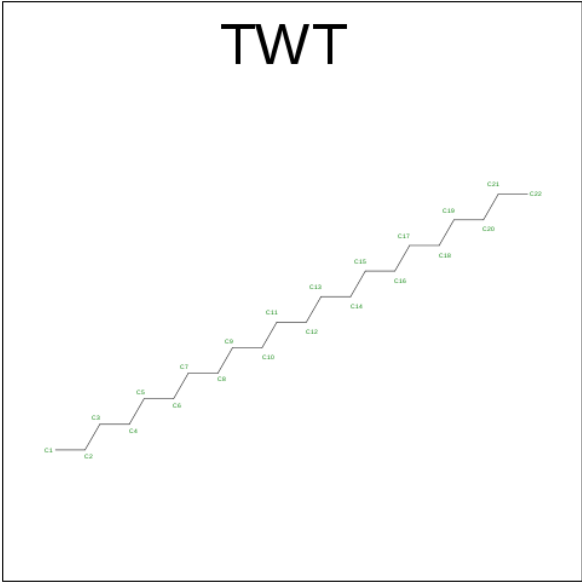
Mol	Chain	Residues	Atoms		ZeroOcc	AltConf
2	A	1	Total	C	0	0
			20	20		
2	B	1	Total	C	0	0
			20	20		

- Molecule 3 is PALMITIC ACID (three-letter code: PLM) (formula:  $C_{16}H_{32}O_2$ ).



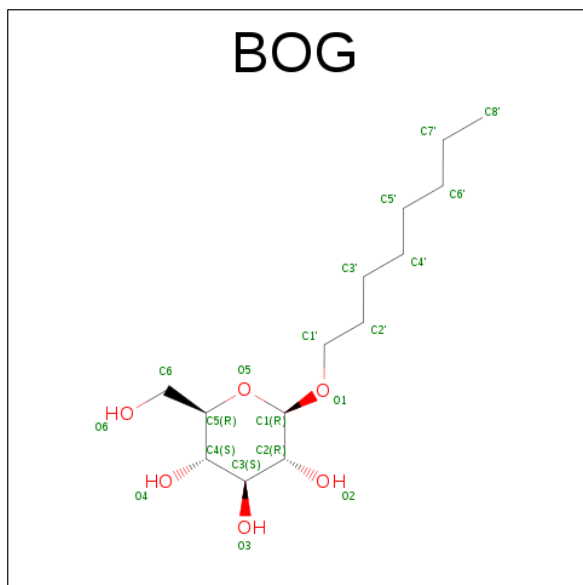
Mol	Chain	Residues	Atoms			ZeroOcc	AltConf
3	A	1	Total	C	O	0	0
			17	16	1		
3	A	1	Total	C	O	0	0
			17	16	1		
3	B	1	Total	C	O	0	0
			17	16	1		
3	B	1	Total	C	O	0	0
			17	16	1		

- Molecule 4 is DOCOSANE (three-letter code: TWT) (formula: C<sub>22</sub>H<sub>46</sub>).



Mol	Chain	Residues	Atoms		ZeroOcc	AltConf
4	A	1	Total	C	0	0
			22	22		
4	B	1	Total	C	0	0
			22	22		

- Molecule 5 is B-OCTYLGLUCOSIDE (three-letter code: BOG) (formula:  $C_{14}H_{28}O_6$ ).



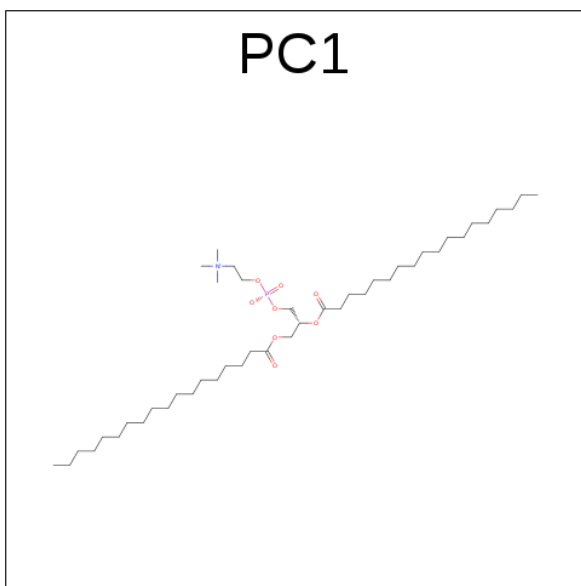
Mol	Chain	Residues	Atoms			ZeroOcc	AltConf
5	A	1	Total	C	O	0	0
			20	14	6		
5	B	1	Total	C	O	0	0
			20	14	6		

- Molecule 6 is SULFATE ION (three-letter code: SO4) (formula:  $O_4S$ ).



Mol	Chain	Residues	Atoms			ZeroOcc	AltConf
6	B	1	Total	O	S	0	0
			5	4	1		

- Molecule 7 is 1,2-DIACYL-SN-GLYCERO-3-PHOSPHOCHOLINE (three-letter code: PC1) (formula:  $C_{44}H_{88}NO_8P$ ).



Mol	Chain	Residues	Atoms				ZeroOcc	AltConf
7	B	1	Total	C	O	P	0	0
			39	30	8	1		

- Molecule 8 is water.

Mol	Chain	Residues	Atoms		ZeroOcc	AltConf
8	A	29	Total 29	O 29	0	0
8	B	30	Total 30	O 30	0	0





## 4 Data and refinement statistics

Property	Value	Source
Space group	P 62	Depositor
Cell constants a, b, c, $\alpha$ , $\beta$ , $\gamma$	122.39Å 122.39Å 158.77Å 90.00° 90.00° 120.00°	Depositor
Resolution (Å)	44.08 – 2.80 44.08 – 2.80	Depositor EDS
% Data completeness (in resolution range)	83.5 (44.08-2.80) 83.6 (44.08-2.80)	Depositor EDS
$R_{merge}$	(Not available)	Depositor
$R_{sym}$	0.13	Depositor
$\langle I/\sigma(I) \rangle$ <sup>1</sup>	0.84 (at 2.81Å)	Xtriage
Refinement program	CNS 1.2	Depositor
R, $R_{free}$	0.290 , 0.296 0.290 , 0.297	Depositor DCC
$R_{free}$ test set	1351 reflections (4.88%)	DCC
Wilson B-factor (Å <sup>2</sup> )	55.9	Xtriage
Anisotropy	0.381	Xtriage
Bulk solvent $k_{sol}$ (e/Å <sup>3</sup> ), $B_{sol}$ (Å <sup>2</sup> )	0.32 , 61.4	EDS
L-test for twinning <sup>2</sup>	$\langle  L  \rangle = 0.47$ , $\langle L^2 \rangle = 0.30$	Xtriage
Estimated twinning fraction	0.127 for h,-h-k,-l	Xtriage
$F_o, F_c$ correlation	0.90	EDS
Total number of atoms	5838	wwPDB-VP
Average B, all atoms (Å <sup>2</sup> )	70.0	wwPDB-VP

Xtriage's analysis on translational NCS is as follows: *The largest off-origin peak in the Patterson function is 3.18% of the height of the origin peak. No significant pseudotranslation is detected.*

<sup>1</sup>Intensities estimated from amplitudes.

<sup>2</sup>Theoretical values of  $\langle |L| \rangle$ ,  $\langle L^2 \rangle$  for acentric reflections are 0.5, 0.333 respectively for untwinned datasets, and 0.375, 0.2 for perfectly twinned datasets.

## 5 Model quality [i](#)

### 5.1 Standard geometry [i](#)

Bond lengths and bond angles in the following residue types are not validated in this section: PC1, RET, SO4, TWT, PLM, BOG

The Z score for a bond length (or angle) is the number of standard deviations the observed value is removed from the expected value. A bond length (or angle) with  $|Z| > 5$  is considered an outlier worth inspection. RMSZ is the root-mean-square of all Z scores of the bond lengths (or angles).

Mol	Chain	Bond lengths		Bond angles	
		RMSZ	$\# Z  > 5$	RMSZ	$\# Z  > 5$
1	A	0.46	0/2866	0.63	0/3889
1	B	0.47	0/2847	0.64	0/3865
All	All	0.47	0/5713	0.64	0/7754

There are no bond length outliers.

There are no bond angle outliers.

There are no chirality outliers.

There are no planarity outliers.

### 5.2 Too-close contacts [i](#)

In the following table, the Non-H and H(model) columns list the number of non-hydrogen atoms and hydrogen atoms in the chain respectively. The H(added) column lists the number of hydrogen atoms added and optimized by MolProbity. The Clashes column lists the number of clashes within the asymmetric unit, whereas Symm-Clashes lists symmetry related clashes.

Mol	Chain	Non-H	H(model)	H(added)	Clashes	Symm-Clashes
1	A	2781	0	2766	181	0
1	B	2762	0	2752	141	0
2	A	20	0	27	3	0
2	B	20	0	27	0	0
3	A	34	0	62	1	0
3	B	34	0	62	1	0
4	A	22	0	46	0	0
4	B	22	0	46	0	0
5	A	20	0	28	5	0
5	B	20	0	28	2	0
6	B	5	0	0	0	0

*Continued on next page...*

*Continued from previous page...*

Mol	Chain	Non-H	H(model)	H(added)	Clashes	Symm-Clashes
7	B	39	0	49	1	0
8	A	29	0	0	8	0
8	B	30	0	0	3	0
All	All	5838	0	5893	320	0

The all-atom clashscore is defined as the number of clashes found per 1000 atoms (including hydrogen atoms). The all-atom clashscore for this structure is 27.

The worst 5 of 320 close contacts within the same asymmetric unit are listed below, sorted by their clash magnitude.

Atom-1	Atom-2	Interatomic distance (Å)	Clash overlap (Å)
1:A:21:PRO:HA	1:A:24:ARG:HD3	1.32	1.11
1:A:59:PHE:HB3	1:A:74:ILE:HD11	1.36	1.06
1:A:284:ALA:HB2	1:A:292:VAL:HG21	1.42	0.98
1:B:150:ARG:HD2	1:B:150:ARG:H	1.28	0.96
1:B:113:PHE:O	1:B:117:ILE:HG22	1.69	0.91

There are no symmetry-related clashes.

## 5.3 Torsion angles [i](#)

### 5.3.1 Protein backbone [i](#)

In the following table, the Percentiles column shows the percent Ramachandran outliers of the chain as a percentile score with respect to all X-ray entries followed by that with respect to entries of similar resolution.

The Analysed column shows the number of residues for which the backbone conformation was analysed, and the total number of residues.

Mol	Chain	Analysed	Favoured	Allowed	Outliers	Percentiles	
1	A	348/350 (99%)	299 (86%)	39 (11%)	10 (3%)	5	18
1	B	345/350 (99%)	306 (89%)	33 (10%)	6 (2%)	11	34
All	All	693/700 (99%)	605 (87%)	72 (10%)	16 (2%)	7	25

5 of 16 Ramachandran outliers are listed below:

Mol	Chain	Res	Type
1	A	243	ALA

*Continued on next page...*

*Continued from previous page...*

Mol	Chain	Res	Type
1	A	298	GLN
1	B	241	LEU
1	B	243	ALA
1	B	352	THR

### 5.3.2 Protein sidechains ⓘ

In the following table, the Percentiles column shows the percent sidechain outliers of the chain as a percentile score with respect to all X-ray entries followed by that with respect to entries of similar resolution.

The Analysed column shows the number of residues for which the sidechain conformation was analysed, and the total number of residues.

Mol	Chain	Analysed	Rotameric	Outliers	Percentiles	
1	A	296/296 (100%)	276 (93%)	20 (7%)	18	47
1	B	295/296 (100%)	271 (92%)	24 (8%)	14	37
All	All	591/592 (100%)	547 (93%)	44 (7%)	16	42

5 of 44 residues with a non-rotameric sidechain are listed below:

Mol	Chain	Res	Type
1	A	349	ASP
1	B	67	THR
1	B	303	PHE
1	B	9	GLU
1	B	16	SER

Some sidechains can be flipped to improve hydrogen bonding and reduce clashes. 5 of 17 such sidechains are listed below:

Mol	Chain	Res	Type
1	A	338	GLN
1	B	52	ASN
1	B	230	HIS
1	A	269	GLN
1	B	269	GLN

### 5.3.3 RNA ⓘ

There are no RNA molecules in this entry.

## 5.4 Non-standard residues in protein, DNA, RNA chains [i](#)

There are no non-standard protein/DNA/RNA residues in this entry.

## 5.5 Carbohydrates [i](#)

There are no carbohydrates in this entry.

## 5.6 Ligand geometry [i](#)

12 ligands are modelled in this entry.

In the following table, the Counts columns list the number of bonds (or angles) for which Mogul statistics could be retrieved, the number of bonds (or angles) that are observed in the model and the number of bonds (or angles) that are defined in the chemical component dictionary. The Link column lists molecule types, if any, to which the group is linked. The Z score for a bond length (or angle) is the number of standard deviations the observed value is removed from the expected value. A bond length (or angle) with  $|Z| > 2$  is considered an outlier worth inspection. RMSZ is the root-mean-square of all Z scores of the bond lengths (or angles).

Mol	Type	Chain	Res	Link	Bond lengths			Bond angles		
					Counts	RMSZ	# $ Z  > 2$	Counts	RMSZ	# $ Z  > 2$
2	RET	A	401	1	19,20,21	1.77	4 (21%)	27,27,28	2.39	8 (29%)
3	PLM	A	402	-	16,16,17	0.58	0	15,15,17	0.63	0
3	PLM	A	403	-	16,16,17	0.32	0	15,15,17	0.70	0
4	TWT	A	404	-	21,21,21	0.31	0	20,20,20	1.65	4 (20%)
5	BOG	A	405	-	20,20,20	1.82	8 (40%)	25,25,25	2.80	11 (44%)
6	SO4	B	401	-	4,4,4	0.36	0	6,6,6	0.06	0
2	RET	B	402	1	19,20,21	1.55	4 (21%)	27,27,28	2.31	8 (29%)
3	PLM	B	403	-	16,16,17	0.47	0	15,15,17	0.67	0
3	PLM	B	404	-	16,16,17	0.39	0	15,15,17	0.69	0
4	TWT	B	405	-	21,21,21	0.26	0	20,20,20	1.71	6 (30%)
7	PC1	B	406	-	38,38,53	1.58	2 (5%)	40,43,61	1.02	2 (5%)
5	BOG	B	407	-	20,20,20	1.81	7 (35%)	25,25,25	2.78	11 (44%)

In the following table, the Chirals column lists the number of chiral outliers, the number of chiral centers analysed, the number of these observed in the model and the number defined in the chemical component dictionary. Similar counts are reported in the Torsion and Rings columns. '-' means no outliers of that kind were identified.

Mol	Type	Chain	Res	Link	Chirals	Torsions	Rings
2	RET	A	401	1	-	0/13/30/31	0/1/1/1

*Continued on next page...*

*Continued from previous page...*

Mol	Type	Chain	Res	Link	Chirals	Torsions	Rings
3	PLM	A	402	-	-	0/13/14/15	0/0/0/0
3	PLM	A	403	-	-	0/13/14/15	0/0/0/0
4	TWT	A	404	-	-	0/19/19/19	0/0/0/0
5	BOG	A	405	-	-	0/11/31/31	0/1/1/1
6	SO4	B	401	-	-	0/0/0/0	0/0/0/0
2	RET	B	402	1	-	0/13/30/31	0/1/1/1
3	PLM	B	403	-	-	0/13/14/15	0/0/0/0
3	PLM	B	404	-	-	0/13/14/15	0/0/0/0
4	TWT	B	405	-	-	0/19/19/19	0/0/0/0
7	PC1	B	406	-	-	0/42/42/57	0/0/0/0
5	BOG	B	407	-	-	0/11/31/31	0/1/1/1

The worst 5 of 25 bond length outliers are listed below:

Mol	Chain	Res	Type	Atoms	Z	Observed(Å)	Ideal(Å)
2	A	401	RET	C2-C3	-3.48	1.43	1.52
2	B	402	RET	C2-C3	-3.23	1.44	1.52
5	B	407	BOG	C4-C5	-2.55	1.47	1.53
5	A	405	BOG	C3-C2	-2.23	1.46	1.52
5	A	405	BOG	C4-C5	-2.17	1.48	1.53

The worst 5 of 50 bond angle outliers are listed below:

Mol	Chain	Res	Type	Atoms	Z	Observed(°)	Ideal(°)
5	B	407	BOG	C1'-O1-C1	-8.03	100.08	113.87
5	A	405	BOG	C1'-O1-C1	-7.96	100.20	113.87
2	B	402	RET	C8-C9-C10	-5.75	110.12	118.94
2	A	401	RET	C8-C9-C10	-5.45	110.57	118.94
5	B	407	BOG	C1-C2-C3	-4.87	100.92	109.98

There are no chirality outliers.

There are no torsion outliers.

There are no ring outliers.

6 monomers are involved in 13 short contacts:

Mol	Chain	Res	Type	Clashes	Symm-Clashes
2	A	401	RET	3	0
3	A	403	PLM	1	0
5	A	405	BOG	5	0
3	B	404	PLM	1	0
7	B	406	PC1	1	0

*Continued on next page...*

*Continued from previous page...*

Mol	Chain	Res	Type	Clashes	Symm-Clashes
5	B	407	BOG	2	0

## 5.7 Other polymers [i](#)

There are no such residues in this entry.

## 5.8 Polymer linkage issues [i](#)

There are no chain breaks in this entry.



## 6 Fit of model and data [i](#)

### 6.1 Protein, DNA and RNA chains [i](#)

In the following table, the column labelled ‘#RSRZ> 2’ contains the number (and percentage) of RSRZ outliers, followed by percent RSRZ outliers for the chain as percentile scores relative to all X-ray entries and entries of similar resolution. The OWAB column contains the minimum, median, 95<sup>th</sup> percentile and maximum values of the occupancy-weighted average B-factor per residue. The column labelled ‘Q< 0.9’ lists the number of (and percentage) of residues with an average occupancy less than 0.9.

Mol	Chain	Analysed	<RSRZ>	#RSRZ>2	OWAB(Å <sup>2</sup> )	Q<0.9
1	A	350/350 (100%)	-0.00	5 (1%) 75 69	33, 62, 145, 158	0
1	B	347/350 (99%)	-0.05	1 (0%) 93 92	32, 60, 124, 143	0
All	All	697/700 (99%)	-0.03	6 (0%) 84 79	32, 61, 135, 158	0

The worst 5 of 6 RSRZ outliers are listed below:

Mol	Chain	Res	Type	RSRZ
1	A	244	LYS	3.7
1	A	241	LEU	3.6
1	A	229	ASN	3.2
1	A	329	THR	2.5
1	A	246	LEU	2.1

### 6.2 Non-standard residues in protein, DNA, RNA chains [i](#)

There are no non-standard protein/DNA/RNA residues in this entry.

### 6.3 Carbohydrates [i](#)

There are no carbohydrates in this entry.

### 6.4 Ligands [i](#)

In the following table, the Atoms column lists the number of modelled atoms in the group and the number defined in the chemical component dictionary. LLDF column lists the quality of electron density of the group with respect to its neighbouring residues in protein, DNA or RNA chains. The B-factors column lists the minimum, median, 95<sup>th</sup> percentile and maximum values of B factors of atoms in the group. The column labelled ‘Q< 0.9’ lists the number of atoms with occupancy less than 0.9.

Mol	Type	Chain	Res	Atoms	RSCC	RSR	LLDF	B-factors( $\text{\AA}^2$ )	Q<0.9
3	PLM	B	404	17/18	0.83	0.81	23.56	115,115,117,118	0
4	TWT	B	405	22/22	0.86	0.55	14.13	82,86,90,90	0
4	TWT	A	404	22/22	0.79	0.58	13.42	79,92,105,106	0
3	PLM	A	403	17/18	0.81	0.56	10.59	98,108,111,111	0
3	PLM	B	403	17/18	0.86	0.31	4.44	63,69,73,74	0
7	PC1	B	406	39/54	0.82	0.28	3.84	71,88,131,131	0
5	BOG	B	407	20/20	0.93	0.36	3.11	102,116,118,119	0
2	RET	A	401	20/21	0.97	0.26	2.34	45,50,53,53	0
3	PLM	A	402	17/18	0.84	0.27	1.82	50,57,62,63	0
2	RET	B	402	20/21	0.97	0.22	0.97	37,42,46,49	0
5	BOG	A	405	20/20	0.90	0.21	0.47	57,105,111,112	0
6	SO4	B	401	5/5	0.95	0.10	-	141,141,142,142	0

## 6.5 Other polymers [i](#)

There are no such residues in this entry.