



Full wwPDB X-ray Structure Validation Report ⓘ

Feb 12, 2017 – 09:58 pm GMT

PDB ID : 1X0S
Title : Crystal structure of the 13-cis isomer of bacteriorhodopsin
Authors : Nishikawa, T.; Murakami, M.; Kouyama, T.
Deposited on : 2005-03-28
Resolution : 2.50 Å(reported)

This is a Full wwPDB X-ray Structure Validation Report for a publicly released PDB entry.

We welcome your comments at validation@mail.wwpdb.org

A user guide is available at

<http://wwpdb.org/validation/2016/XrayValidationReportHelp>

with specific help available everywhere you see the ⓘ symbol.

The following versions of software and data (see [references ⓘ](#)) were used in the production of this report:

MolProbity : 4.02b-467
Mogul : 1.7.2 (RC1), CSD as538be (2017)
Xtriage (Phenix) : 1.9-1692
EDS : trunk28620
Percentile statistics : 20161228.v01 (using entries in the PDB archive December 28th 2016)
Refmac : 5.8.0135
CCP4 : 6.5.0
Ideal geometry (proteins) : Engh & Huber (2001)
Ideal geometry (DNA, RNA) : Parkinson et al. (1996)
Validation Pipeline (wwPDB-VP) : recalc28949

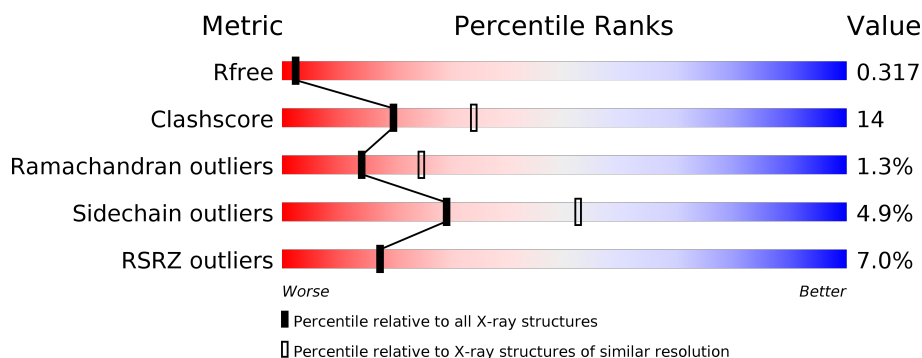
1 Overall quality at a glance

The following experimental techniques were used to determine the structure:

X-RAY DIFFRACTION

The reported resolution of this entry is 2.50 Å.

Percentile scores (ranging between 0-100) for global validation metrics of the entry are shown in the following graphic. The table shows the number of entries on which the scores are based.



Metric	Whole archive (#Entries)	Similar resolution (#Entries, resolution range(Å))
R_{free}	100719	3846 (2.50-2.50)
Clashscore	112137	4554 (2.50-2.50)
Ramachandran outliers	110173	4463 (2.50-2.50)
Sidechain outliers	110143	4465 (2.50-2.50)
RSRZ outliers	101464	3876 (2.50-2.50)

The table below summarises the geometric issues observed across the polymeric chains and their fit to the electron density. The red, orange, yellow and green segments on the lower bar indicate the fraction of residues that contain outliers for ≥ 3 , 2, 1 and 0 types of geometric quality criteria. A grey segment represents the fraction of residues that are not modelled. The numeric value for each fraction is indicated below the corresponding segment, with a dot representing fractions $\leq 5\%$. The upper red bar (where present) indicates the fraction of residues that have poor fit to the electron density. The numeric value is given above the bar.

Mol	Chain	Length	Quality of chain
1	A	248	

The following table lists non-polymeric compounds, carbohydrate monomers and non-standard residues in protein, DNA, RNA chains that are outliers for geometric or electron-density-fit criteria:

Mol	Type	Chain	Res	Chirality	Geometry	Clashes	Electron density
2	GLC	A	400	X	-	-	X
3	SO4	A	700	-	-	X	X

Continued on next page...

Continued from previous page...

Mol	Type	Chain	Res	Chirality	Geometry	Clashes	Electron density
4	RET	A	250	-	-	-	X
5	L3P	A	260	-	-	-	X
5	L3P	A	280	-	-	-	X
5	L3P	A	290	-	-	-	X
5	L3P	A	300	-	-	-	X
6	L2P	A	270	-	-	-	X

2 Entry composition [i](#)

There are 7 unique types of molecules in this entry. The entry contains 2101 atoms, of which 0 are hydrogens and 0 are deuteriums.

In the tables below, the ZeroOcc column contains the number of atoms modelled with zero occupancy, the AltConf column contains the number of residues with at least one atom in alternate conformation and the Trace column contains the number of residues modelled with at most 2 atoms.

- Molecule 1 is a protein called Bacteriorhodopsin.

Mol	Chain	Residues	Atoms					ZeroOcc	AltConf	Trace
1	A	227	Total	C	N	O	S	0	0	0
			1756	1180	268	299	9			

- Molecule 2 is a polymer of unknown type called SUGAR (3-MER).

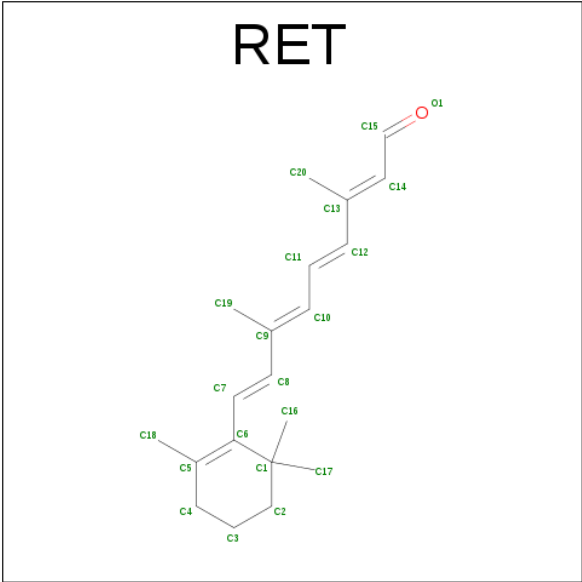
Mol	Chain	Residues	Atoms			ZeroOcc	AltConf
2	A	3	Total	C	O	0	0
			33	18	15		

- Molecule 3 is SULFATE ION (three-letter code: SO4) (formula: O₄S).



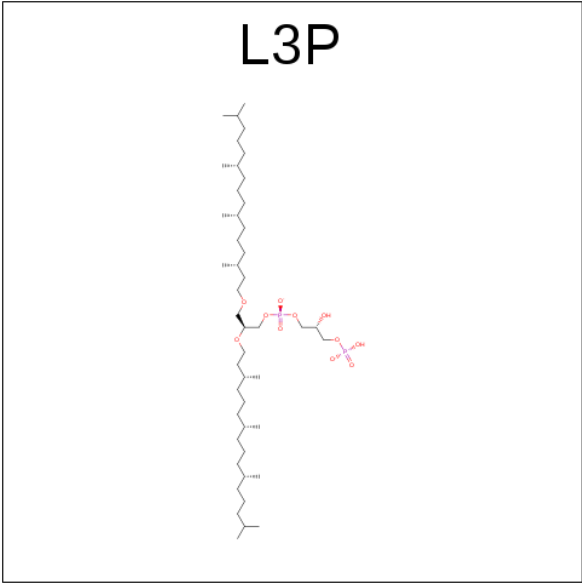
Mol	Chain	Residues	Atoms			ZeroOcc	AltConf
3	A	1	Total	O	S	0	0
			5	4	1		

- Molecule 4 is RETINAL (three-letter code: RET) (formula: C₂₀H₂₈O).



Mol	Chain	Residues	Atoms			ZeroOcc	AltConf
4	A	1	Total	C		0	0
			20	20			

- Molecule 5 is 2,3-DI-O-PHYTANLY-3-SN-GLYCERO-1-PHOSPHORYL-3'-SN-GLYCEROL-1'-PHOSPHATE (three-letter code: L3P) (formula: C₄₆H₉₄O₁₁P₂).



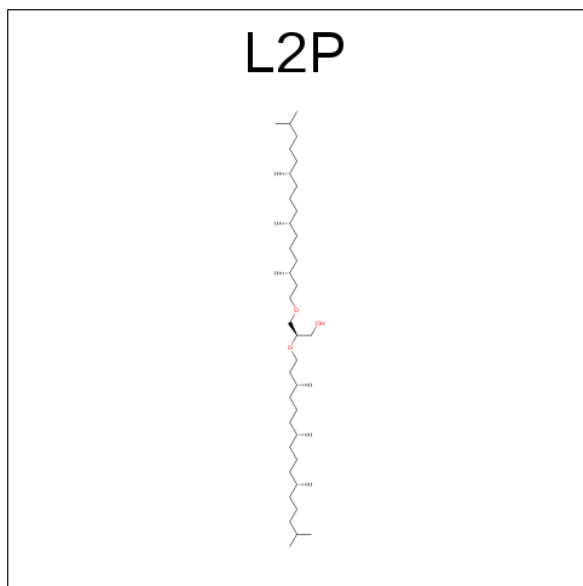
Mol	Chain	Residues	Atoms				ZeroOcc	AltConf
5	A	1	Total	C	O	P	0	0
			59	46	11	2		
5	A	1	Total	C	O	P	0	0
			40	33	6	1		

Continued on next page...

Continued from previous page...

Mol	Chain	Residues	Atoms				ZeroOcc	AltConf
5	A	1	Total	C	O	P	0	0
			50	43	6	1		
5	A	1	Total	C	O	P	0	0
			50	43	6	1		

- Molecule 6 is 2,3-DI-PHYTANYL-GLYCEROL (three-letter code: L2P) (formula: $C_{43}H_{88}O_3$).



Mol	Chain	Residues	Atoms				ZeroOcc	AltConf
6	A	1	Total	C	O		0	0
			46	43	3			

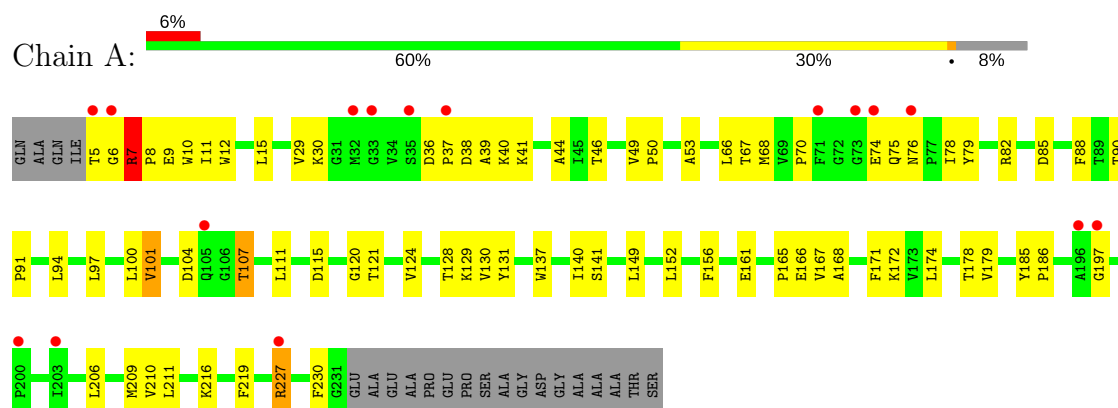
- Molecule 7 is water.

Mol	Chain	Residues	Atoms		ZeroOcc	AltConf
7	A	42	Total	O	0	0
			42	42		

3 Residue-property plots

These plots are drawn for all protein, RNA and DNA chains in the entry. The first graphic for a chain summarises the proportions of the various outlier classes displayed in the second graphic. The second graphic shows the sequence view annotated by issues in geometry and electron density. Residues are color-coded according to the number of geometric quality criteria for which they contain at least one outlier: green = 0, yellow = 1, orange = 2 and red = 3 or more. A red dot above a residue indicates a poor fit to the electron density ($RSRZ > 2$). Stretches of 2 or more consecutive residues without any outlier are shown as a green connector. Residues present in the sample, but not in the model, are shown in grey.

• Molecule 1: Bacteriorhodopsin



4 Data and refinement statistics

Property	Value	Source
Space group	P 6 2 2	Depositor
Cell constants a, b, c, α , β , γ	101.98Å 101.98Å 112.10Å 90.00° 90.00° 120.00°	Depositor
Resolution (Å)	14.94 – 2.50 17.84 – 2.50	Depositor EDS
% Data completeness (in resolution range)	96.6 (14.94-2.50) 96.3 (17.84-2.50)	Depositor EDS
R_{merge}	0.56	Depositor
R_{sym}	0.56	Depositor
$\langle I/\sigma(I) \rangle$ ¹	2.36 (at 2.49Å)	Xtriage
Refinement program	CNS 1.1	Depositor
R, R_{free}	0.271 , 0.305 0.283 , 0.317	Depositor DCC
R_{free} test set	615 reflections (5.14%)	DCC
Wilson B-factor (Å ²)	57.6	Xtriage
Anisotropy	0.399	Xtriage
Bulk solvent k_{sol} (e/Å ³), B_{sol} (Å ²)	0.43 , 91.4	EDS
L-test for twinning ²	$\langle L \rangle = 0.52$, $\langle L^2 \rangle = 0.36$	Xtriage
Estimated twinning fraction	No twinning to report.	Xtriage
F_o, F_c correlation	0.93	EDS
Total number of atoms	2101	wwPDB-VP
Average B, all atoms (Å ²)	66.0	wwPDB-VP

Xtriage's analysis on translational NCS is as follows: *The largest off-origin peak in the Patterson function is 5.48% of the height of the origin peak. No significant pseudotranslation is detected.*

¹Intensities estimated from amplitudes.

²Theoretical values of $\langle |L| \rangle$, $\langle L^2 \rangle$ for acentric reflections are 0.5, 0.333 respectively for untwinned datasets, and 0.375, 0.2 for perfectly twinned datasets.

5 Model quality [i](#)

5.1 Standard geometry [i](#)

Bond lengths and bond angles in the following residue types are not validated in this section: GLC, RET, L2P, GAL, SO4, L3P, MAN

The Z score for a bond length (or angle) is the number of standard deviations the observed value is removed from the expected value. A bond length (or angle) with $|Z| > 5$ is considered an outlier worth inspection. RMSZ is the root-mean-square of all Z scores of the bond lengths (or angles).

Mol	Chain	Bond lengths		Bond angles	
		RMSZ	$\# Z > 5$	RMSZ	$\# Z > 5$
1	A	0.45	0/1804	0.62	0/2464

Chiral center outliers are detected by calculating the chiral volume of a chiral center and verifying if the center is modelled as a planar moiety or with the opposite hand. A planarity outlier is detected by checking planarity of atoms in a peptide group, atoms in a mainchain group or atoms of a sidechain that are expected to be planar.

Mol	Chain	#Chirality outliers	#Planarity outliers
2	A	1	0

There are no bond length outliers.

There are no bond angle outliers.

All (1) chirality outliers are listed below:

Mol	Chain	Res	Type	Atom
2	A	400	GLC	C1

There are no planarity outliers.

5.2 Too-close contacts [i](#)

In the following table, the Non-H and H(model) columns list the number of non-hydrogen atoms and hydrogen atoms in the chain respectively. The H(added) column lists the number of hydrogen atoms added and optimized by MolProbity. The Clashes column lists the number of clashes within the asymmetric unit, whereas Symm-Clashes lists symmetry related clashes.

Mol	Chain	Non-H	H(model)	H(added)	Clashes	Symm-Clashes
1	A	1756	0	1813	60	1

Continued on next page...

Continued from previous page...

Mol	Chain	Non-H	H(model)	H(added)	Clashes	Symm-Clashes
2	A	33	0	28	0	0
3	A	5	0	0	2	0
4	A	20	0	27	3	0
5	A	199	0	331	4	0
6	A	46	0	86	1	0
7	A	42	0	0	6	0
All	All	2101	0	2285	62	1

The all-atom clashscore is defined as the number of clashes found per 1000 atoms (including hydrogen atoms). The all-atom clashscore for this structure is 14.

All (62) close contacts within the same asymmetric unit are listed below, sorted by their clash magnitude.

Atom-1	Atom-2	Interatomic distance (Å)	Clash overlap (Å)
1:A:15:LEU:HB3	1:A:209:MET:HE2	1.52	0.90
1:A:227:ARG:HB3	1:A:227:ARG:HH11	1.46	0.79
1:A:38:ASP:HA	1:A:41:LYS:HE3	1.70	0.74
1:A:15:LEU:HD23	1:A:209:MET:HE1	1.68	0.73
1:A:6:GLY:HA2	1:A:9:GLU:OE1	1.88	0.73
1:A:174:LEU:O	1:A:178:THR:HG23	1.94	0.67
1:A:124:VAL:O	1:A:128:THR:HG23	1.96	0.66
1:A:44:ALA:HA	5:A:260:L3P:H111	1.79	0.64
1:A:15:LEU:HD23	1:A:209:MET:CE	2.28	0.63
1:A:186:PRO:HB3	4:A:250:RET:H183	1.80	0.63
1:A:107:THR:HG21	7:A:629:HOH:O	2.01	0.60
1:A:104:ASP:O	1:A:107:THR:HG23	2.01	0.60
1:A:128:THR:HA	3:A:700:SO4:O1	2.02	0.60
1:A:44:ALA:HA	5:A:260:L3P:H142	1.85	0.59
1:A:104:ASP:HB2	1:A:107:THR:HG22	1.84	0.58
1:A:12:TRP:CE3	1:A:206:LEU:HD23	2.38	0.58
1:A:7:ARG:HB3	1:A:8:PRO:CD	2.35	0.57
1:A:120:GLY:HA3	6:A:270:L2P:H491	1.87	0.56
1:A:165:PRO:HG2	7:A:630:HOH:O	2.06	0.56
1:A:46:THR:O	1:A:50:PRO:HD2	2.05	0.55
1:A:168:ALA:O	1:A:172:LYS:HG2	2.06	0.55
1:A:141:SER:OG	4:A:250:RET:H41	2.08	0.54
1:A:79:TYR:O	1:A:82:ARG:HG3	2.08	0.53
1:A:156:PHE:HB3	1:A:171:PHE:CZ	2.43	0.52
1:A:12:TRP:CD1	1:A:206:LEU:HB2	2.44	0.52
1:A:185:TYR:N	1:A:186:PRO:HD2	2.25	0.52
1:A:227:ARG:HD2	1:A:230:PHE:CD2	2.45	0.51

Continued on next page...

Continued from previous page...

Atom-1	Atom-2	Interatomic distance (Å)	Clash overlap (Å)
1:A:227:ARG:HB3	1:A:227:ARG:NH1	2.21	0.51
1:A:90:THR:OG1	1:A:91:PRO:HD3	2.11	0.51
1:A:12:TRP:CD2	1:A:206:LEU:HD23	2.46	0.50
1:A:82:ARG:NH1	7:A:605:HOH:O	2.46	0.49
5:A:260:L3P:H2	7:A:634:HOH:O	2.13	0.49
1:A:67:THR:HG22	1:A:78:ILE:O	2.13	0.49
1:A:149:LEU:HD22	1:A:179:VAL:HA	1.94	0.49
1:A:5:THR:HB	7:A:641:HOH:O	2.11	0.49
1:A:90:THR:HB	1:A:115:ASP:OD2	2.12	0.49
1:A:152:LEU:O	1:A:156:PHE:HB2	2.14	0.47
1:A:66:LEU:HB2	1:A:79:TYR:CE1	2.48	0.47
1:A:29:VAL:O	1:A:29:VAL:HG12	2.14	0.47
1:A:128:THR:HG21	1:A:137:TRP:CD1	2.50	0.47
1:A:130:VAL:O	1:A:131:TYR:C	2.54	0.46
1:A:5:THR:OG1	1:A:6:GLY:N	2.48	0.46
1:A:49:VAL:HG12	1:A:216:LYS:HD3	1.97	0.46
1:A:7:ARG:HB3	1:A:8:PRO:HD3	1.97	0.46
1:A:174:LEU:HD22	1:A:219:PHE:CE2	2.51	0.45
1:A:53:ALA:HA	1:A:85:ASP:OD2	2.17	0.45
1:A:121:THR:HG23	1:A:137:TRP:HE3	1.82	0.45
1:A:88:PHE:O	1:A:91:PRO:HD2	2.17	0.44
1:A:129:LYS:HB2	3:A:700:SO4:O4	2.17	0.44
1:A:10:TRP:CG	1:A:11:ILE:N	2.86	0.44
1:A:68:MET:HA	1:A:76:ASN:O	2.18	0.44
1:A:206:LEU:O	1:A:210:VAL:HG23	2.19	0.43
1:A:121:THR:HG21	1:A:140:ILE:HB	2.02	0.42
1:A:36:ASP:HB3	1:A:39:ALA:HB3	2.01	0.42
1:A:166:GLU:HG3	7:A:630:HOH:O	2.19	0.42
1:A:88:PHE:C	1:A:91:PRO:HD2	2.39	0.42
1:A:36:ASP:HA	1:A:37:PRO:HD2	1.93	0.42
1:A:100:LEU:CD1	1:A:167:VAL:HG13	2.50	0.41
4:A:250:RET:H191	4:A:250:RET:H11	1.94	0.41
1:A:40:LYS:HZ2	5:A:260:L3P:P1	2.43	0.41
1:A:101:VAL:O	1:A:101:VAL:HG13	2.20	0.40
1:A:70:PRO:HA	1:A:74:GLU:O	2.22	0.40

All (1) symmetry-related close contacts are listed below. The label for Atom-2 includes the symmetry operator and encoded unit-cell translations to be applied.

Atom-1	Atom-2	Interatomic distance (Å)	Clash overlap (Å)
1:A:75:GLN:NE2	1:A:75:GLN:NE2[12_555]	2.13	0.07

5.3 Torsion angles [i](#)

5.3.1 Protein backbone [i](#)

In the following table, the Percentiles column shows the percent Ramachandran outliers of the chain as a percentile score with respect to all X-ray entries followed by that with respect to entries of similar resolution.

The Analysed column shows the number of residues for which the backbone conformation was analysed, and the total number of residues.

Mol	Chain	Analysed	Favoured	Allowed	Outliers	Percentiles	
1	A	225/248 (91%)	211 (94%)	11 (5%)	3 (1%)	14	25

All (3) Ramachandran outliers are listed below:

Mol	Chain	Res	Type
1	A	7	ARG
1	A	30	LYS
1	A	197	GLY

5.3.2 Protein sidechains [i](#)

In the following table, the Percentiles column shows the percent sidechain outliers of the chain as a percentile score with respect to all X-ray entries followed by that with respect to entries of similar resolution.

The Analysed column shows the number of residues for which the sidechain conformation was analysed, and the total number of residues.

Mol	Chain	Analysed	Rotameric	Outliers	Percentiles	
1	A	182/194 (94%)	173 (95%)	9 (5%)	29	52

All (9) residues with a non-rotameric sidechain are listed below:

Mol	Chain	Res	Type
1	A	7	ARG
1	A	94	LEU
1	A	97	LEU
1	A	101	VAL
1	A	107	THR
1	A	111	LEU
1	A	161	GLU
1	A	211	LEU

Continued on next page...

Continued from previous page...

Mol	Chain	Res	Type
1	A	227	ARG

Some sidechains can be flipped to improve hydrogen bonding and reduce clashes. All (1) such sidechains are listed below:

Mol	Chain	Res	Type
1	A	105	GLN

5.3.3 RNA [i](#)

There are no RNA molecules in this entry.

5.4 Non-standard residues in protein, DNA, RNA chains [i](#)

There are no non-standard protein/DNA/RNA residues in this entry.

5.5 Carbohydrates [i](#)

3 carbohydrates are modelled in this entry.

In the following table, the Counts columns list the number of bonds (or angles) for which Mogul statistics could be retrieved, the number of bonds (or angles) that are observed in the model and the number of bonds (or angles) that are defined in the chemical component dictionary. The Link column lists molecule types, if any, to which the group is linked. The Z score for a bond length (or angle) is the number of standard deviations the observed value is removed from the expected value. A bond length (or angle) with $|Z| > 2$ is considered an outlier worth inspection. RMSZ is the root-mean-square of all Z scores of the bond lengths (or angles).

Mol	Type	Chain	Res	Link	Bond lengths			Bond angles		
					Counts	RMSZ	$\# Z > 2$	Counts	RMSZ	$\# Z > 2$
2	GLC	A	400	2,6	11,11,12	2.60	5 (45%)	13,15,17	1.28	1 (7%)
2	MAN	A	410	2	11,11,12	2.23	6 (54%)	13,15,17	1.44	2 (15%)
2	GAL	A	420	2	11,11,12	2.70	6 (54%)	13,15,17	1.29	2 (15%)

In the following table, the Chirals column lists the number of chiral outliers, the number of chiral centers analysed, the number of these observed in the model and the number defined in the chemical component dictionary. Similar counts are reported in the Torsion and Rings columns. '-' means no outliers of that kind were identified.

Mol	Type	Chain	Res	Link	Chirals	Torsions	Rings
2	GLC	A	400	2,6	1/1/4/5	0/2/19/22	0/1/1/1
2	MAN	A	410	2	-	0/2/19/22	0/1/1/1
2	GAL	A	420	2	-	0/2/19/22	0/1/1/1

All (17) bond length outliers are listed below:

Mol	Chain	Res	Type	Atoms	Z	Observed(Å)	Ideal(Å)
2	A	400	GLC	C4-C5	2.07	1.57	1.53
2	A	410	MAN	O5-C5	2.23	1.48	1.43
2	A	410	MAN	C1-C2	2.49	1.58	1.52
2	A	410	MAN	C4-C5	2.49	1.58	1.53
2	A	410	MAN	O5-C1	2.67	1.48	1.43
2	A	420	GAL	C2-C3	3.03	1.56	1.52
2	A	420	GAL	C4-C3	3.18	1.60	1.52
2	A	410	MAN	O2-C2	3.28	1.50	1.43
2	A	420	GAL	C1-C2	3.33	1.60	1.52
2	A	420	GAL	O5-C1	3.56	1.49	1.43
2	A	400	GLC	C1-C2	3.56	1.60	1.52
2	A	420	GAL	C4-C5	3.77	1.61	1.53
2	A	400	GLC	C2-C3	3.87	1.57	1.52
2	A	410	MAN	C2-C3	4.01	1.57	1.52
2	A	400	GLC	O5-C1	4.12	1.50	1.43
2	A	420	GAL	O5-C5	4.49	1.52	1.43
2	A	400	GLC	O5-C5	4.55	1.53	1.43

All (5) bond angle outliers are listed below:

Mol	Chain	Res	Type	Atoms	Z	Observed(°)	Ideal(°)
2	A	420	GAL	C6-C5-C4	-2.09	108.10	113.00
2	A	420	GAL	C1-O5-C5	2.27	115.30	112.17
2	A	410	MAN	C1-O5-C5	2.45	115.55	112.17
2	A	400	GLC	O6-C6-C5	2.54	119.89	111.34
2	A	410	MAN	O6-C6-C5	3.49	123.09	111.34

All (1) chirality outliers are listed below:

Mol	Chain	Res	Type	Atom
2	A	400	GLC	C1

There are no torsion outliers.

There are no ring outliers.

No monomer is involved in short contacts.

5.6 Ligand geometry

7 ligands are modelled in this entry.

In the following table, the Counts columns list the number of bonds (or angles) for which Mogul statistics could be retrieved, the number of bonds (or angles) that are observed in the model and the number of bonds (or angles) that are defined in the chemical component dictionary. The Link column lists molecule types, if any, to which the group is linked. The Z score for a bond length (or angle) is the number of standard deviations the observed value is removed from the expected value. A bond length (or angle) with $|Z| > 2$ is considered an outlier worth inspection. RMSZ is the root-mean-square of all Z scores of the bond lengths (or angles).

Mol	Type	Chain	Res	Link	Bond lengths			Bond angles		
					Counts	RMSZ	# Z > 2	Counts	RMSZ	# Z > 2
4	RET	A	250	1	19,20,21	2.26	5 (26%)	27,27,28	1.44	5 (18%)
5	L3P	A	260	-	58,58,58	1.24	7 (12%)	64,73,73	1.23	5 (7%)
6	L2P	A	270	2	45,45,45	1.56	11 (24%)	49,53,53	2.10	16 (32%)
5	L3P	A	280	-	39,39,58	2.01	12 (30%)	44,48,73	1.04	2 (4%)
5	L3P	A	290	-	49,49,58	1.88	18 (36%)	56,60,73	1.27	4 (7%)
5	L3P	A	300	-	49,49,58	1.70	14 (28%)	56,60,73	1.20	6 (10%)
3	SO4	A	700	-	4,4,4	0.39	0	6,6,6	0.29	0

In the following table, the Chirals column lists the number of chiral outliers, the number of chiral centers analysed, the number of these observed in the model and the number defined in the chemical component dictionary. Similar counts are reported in the Torsion and Rings columns. '-' means no outliers of that kind were identified.

Mol	Type	Chain	Res	Link	Chirals	Torsions	Rings
4	RET	A	250	1	-	0/13/30/31	0/1/1/1
5	L3P	A	260	-	-	0/67/67/67	0/0/0/0
6	L2P	A	270	2	-	0/51/51/51	0/0/0/0
5	L3P	A	280	-	-	0/43/43/67	0/0/0/0
5	L3P	A	290	-	-	0/55/55/67	0/0/0/0
5	L3P	A	300	-	-	0/55/55/67	0/0/0/0
3	SO4	A	700	-	-	0/0/0/0	0/0/0/0

All (67) bond length outliers are listed below:

Mol	Chain	Res	Type	Atoms	Z	Observed(Å)	Ideal(Å)
4	A	250	RET	C2-C3	-2.99	1.44	1.52
6	A	270	L2P	O1-C1	2.01	1.48	1.42
6	A	270	L2P	C22-C23	2.02	1.63	1.52
5	A	300	L3P	C1-C2	2.05	1.56	1.50
5	A	290	L3P	C16-C15	2.07	1.61	1.52

Continued on next page...

Continued from previous page...

Mol	Chain	Res	Type	Atoms	Z	Observed(Å)	Ideal(Å)
5	A	300	L3P	C56-C55	2.09	1.61	1.52
5	A	280	L3P	C52-C53	2.12	1.64	1.52
6	A	270	L2P	C24-C23	2.13	1.59	1.52
5	A	300	L3P	C26-C25	2.14	1.61	1.52
5	A	280	L3P	C12-C11	2.15	1.58	1.50
5	A	260	L3P	P1-O4	2.17	1.68	1.59
5	A	300	L3P	C14-C13	2.17	1.60	1.52
5	A	290	L3P	C54-C53	2.19	1.60	1.52
6	A	270	L2P	C1-C2	2.21	1.57	1.50
5	A	280	L3P	C56-C57	2.22	1.62	1.52
5	A	290	L3P	C26-C25	2.24	1.62	1.52
5	A	260	L3P	P2-O6	2.24	1.67	1.60
5	A	290	L3P	C1-C2	2.25	1.57	1.50
5	A	300	L3P	C19-C18	2.26	1.60	1.52
5	A	280	L3P	C42-C41	2.27	1.58	1.50
5	A	260	L3P	C6-C5	2.28	1.60	1.51
5	A	300	L3P	C26-C27	2.30	1.62	1.52
5	A	300	L3P	C55-C53	2.33	1.65	1.52
6	A	270	L2P	O2-C2	2.34	1.49	1.43
5	A	290	L3P	O2-C41	2.35	1.49	1.43
5	A	300	L3P	C17-C18	2.35	1.65	1.52
5	A	290	L3P	C55-C53	2.37	1.65	1.52
5	A	290	L3P	C17-C18	2.40	1.65	1.52
5	A	290	L3P	C26-C27	2.43	1.63	1.52
5	A	290	L3P	C56-C55	2.46	1.63	1.52
5	A	290	L3P	C19-C18	2.47	1.61	1.52
5	A	300	L3P	C15-C13	2.48	1.66	1.52
5	A	300	L3P	O1-C11	2.49	1.52	1.42
5	A	280	L3P	O1-C1	2.50	1.49	1.42
5	A	260	L3P	C42-C41	2.51	1.59	1.50
5	A	290	L3P	C25-C23	2.60	1.67	1.52
5	A	280	L3P	C56-C55	2.62	1.63	1.52
5	A	290	L3P	O1-C11	2.62	1.53	1.42
6	A	270	L2P	C3-C2	2.64	1.58	1.50
6	A	270	L2P	C47-C48	2.65	1.67	1.52
5	A	280	L3P	P1-O3	2.66	1.68	1.60
5	A	290	L3P	C14-C13	2.69	1.61	1.52
6	A	270	L2P	C42-C41	2.70	1.60	1.50
5	A	290	L3P	P1-O2P	2.70	1.65	1.54
6	A	270	L2P	C25-C23	2.72	1.67	1.52
5	A	260	L3P	O2-C2	2.77	1.50	1.43
5	A	300	L3P	P1-O2P	2.80	1.66	1.54

Continued on next page...

Continued from previous page...

Mol	Chain	Res	Type	Atoms	Z	Observed(Å)	Ideal(Å)
5	A	290	L3P	C15-C13	2.85	1.68	1.52
6	A	270	L2P	O2-C41	2.91	1.50	1.43
5	A	280	L3P	O2-C41	2.99	1.51	1.43
5	A	260	L3P	P1-O3	3.08	1.72	1.59
5	A	300	L3P	C12-C11	3.12	1.62	1.50
5	A	290	L3P	C12-C11	3.21	1.62	1.50
5	A	260	L3P	O2-C41	3.34	1.51	1.43
4	A	250	RET	C12-C13	3.54	1.53	1.45
5	A	300	L3P	C3-C2	3.57	1.60	1.50
5	A	290	L3P	C3-C2	3.64	1.61	1.50
4	A	250	RET	C7-C6	3.69	1.58	1.45
4	A	250	RET	C5-C6	3.72	1.40	1.34
5	A	280	L3P	P1-O2P	3.84	1.70	1.54
6	A	270	L2P	C26-C25	3.85	1.69	1.52
5	A	280	L3P	C1-C2	3.89	1.61	1.50
5	A	280	L3P	C3-C2	4.37	1.63	1.50
5	A	290	L3P	P1-O3	4.57	1.74	1.60
5	A	300	L3P	P1-O3	4.62	1.75	1.60
5	A	280	L3P	O2-C2	5.55	1.58	1.43
4	A	250	RET	C1-C6	5.87	1.61	1.53

All (38) bond angle outliers are listed below:

Mol	Chain	Res	Type	Atoms	Z	Observed(°)	Ideal(°)
6	A	270	L2P	C54-C53-C52	-3.42	98.88	111.36
6	A	270	L2P	C16-C17-C18	-2.90	106.20	115.73
6	A	270	L2P	C16-C15-C13	-2.87	106.32	115.73
5	A	260	L3P	C26-C25-C23	-2.77	106.65	115.73
5	A	260	L3P	C46-C45-C43	-2.69	106.90	115.73
6	A	270	L2P	C30-C28-C29	-2.57	98.33	110.50
6	A	270	L2P	C19-C18-C20	-2.54	102.09	111.36
5	A	290	L3P	C47-C46-C45	-2.53	101.00	113.25
6	A	270	L2P	C22-C21-C20	-2.49	101.22	113.25
5	A	300	L3P	C47-C46-C45	-2.48	101.27	113.25
6	A	270	L2P	C14-C13-C12	-2.46	102.37	111.36
6	A	270	L2P	C52-C51-C50	-2.46	101.34	113.25
4	A	250	RET	C20-C13-C14	-2.41	116.42	123.66
4	A	250	RET	C11-C10-C9	-2.31	124.02	127.31
4	A	250	RET	C1-C6-C5	-2.28	119.39	122.59
4	A	250	RET	C7-C8-C9	-2.13	123.02	126.21
5	A	280	L3P	C51-C52-C53	2.07	122.53	115.73
6	A	270	L2P	C46-C47-C48	2.10	122.61	115.73

Continued on next page...

Continued from previous page...

Mol	Chain	Res	Type	Atoms	Z	Observed(°)	Ideal(°)
4	A	250	RET	C1-C6-C7	2.13	121.71	115.73
6	A	270	L2P	C49-C48-C47	2.19	119.35	111.36
5	A	300	L3P	C16-C17-C18	2.33	123.37	115.73
5	A	260	L3P	P2-O6-C6	2.34	124.73	118.30
5	A	290	L3P	O4-P1-O3	2.41	113.16	106.73
5	A	300	L3P	O4-P1-O3	2.52	113.44	106.73
5	A	300	L3P	C21-C20-C18	2.62	124.33	115.73
5	A	300	L3P	O2P-P1-O3	2.84	114.28	106.73
6	A	270	L2P	C41-O2-C2	2.85	122.06	115.38
5	A	290	L3P	O2P-P1-O3	2.94	114.56	106.73
6	A	270	L2P	C51-C52-C53	3.05	125.75	115.73
5	A	300	L3P	O1-C1-C2	3.10	116.61	109.36
5	A	260	L3P	C11-O1-C1	3.26	125.33	113.46
6	A	270	L2P	O3-C3-C2	3.57	121.64	111.76
6	A	270	L2P	C26-C27-C28	3.64	133.32	115.96
5	A	280	L3P	C51-C50-C48	3.82	128.28	115.73
5	A	260	L3P	C41-O2-C2	4.96	127.00	115.38
5	A	290	L3P	O1-C1-C2	5.39	121.95	109.36
6	A	270	L2P	C29-C28-C27	5.55	147.34	111.50
6	A	270	L2P	O1-C1-C2	6.90	125.48	109.36

There are no chirality outliers.

There are no torsion outliers.

There are no ring outliers.

4 monomers are involved in 10 short contacts:

Mol	Chain	Res	Type	Clashes	Symm-Clashes
4	A	250	RET	3	0
5	A	260	L3P	4	0
6	A	270	L2P	1	0
3	A	700	SO4	2	0

5.7 Other polymers [i](#)

There are no such residues in this entry.

5.8 Polymer linkage issues [i](#)

There are no chain breaks in this entry.

6 Fit of model and data [i](#)

6.1 Protein, DNA and RNA chains [i](#)

In the following table, the column labelled ‘#RSRZ> 2’ contains the number (and percentage) of RSRZ outliers, followed by percent RSRZ outliers for the chain as percentile scores relative to all X-ray entries and entries of similar resolution. The OWAB column contains the minimum, median, 95th percentile and maximum values of the occupancy-weighted average B-factor per residue. The column labelled ‘Q< 0.9’ lists the number of (and percentage) of residues with an average occupancy less than 0.9.

Mol	Chain	Analysed	<RSRZ>	#RSRZ>2	OWAB(Å ²)	Q<0.9
1	A	227/248 (91%)	0.25	16 (7%) 17 17	41, 57, 79, 96	0

All (16) RSRZ outliers are listed below:

Mol	Chain	Res	Type	RSRZ
1	A	6	GLY	6.7
1	A	5	THR	3.9
1	A	37	PRO	3.5
1	A	73	GLY	3.5
1	A	71	PHE	3.4
1	A	32	MET	3.2
1	A	227	ARG	3.2
1	A	203	ILE	3.1
1	A	74	GLU	3.1
1	A	200	PRO	3.0
1	A	33	GLY	2.6
1	A	196	ALA	2.6
1	A	35	SER	2.2
1	A	197	GLY	2.1
1	A	105	GLN	2.1
1	A	76	ASN	2.1

6.2 Non-standard residues in protein, DNA, RNA chains [i](#)

There are no non-standard protein/DNA/RNA residues in this entry.

6.3 Carbohydrates [i](#)

In the following table, the Atoms column lists the number of modelled atoms in the group and the number defined in the chemical component dictionary. LLDF column lists the quality of electron

density of the group with respect to its neighbouring residues in protein, DNA or RNA chains. The B-factors column lists the minimum, median, 95th percentile and maximum values of B factors of atoms in the group. The column labelled 'Q < 0.9' lists the number of atoms with occupancy less than 0.9.

Mol	Type	Chain	Res	Atoms	RSCC	RSR	LLDF	B-factors(Å ²)	Q<0.9
2	GLC	A	400	11/12	0.69	0.38	4.35	102,105,107,107	0
2	MAN	A	410	11/12	0.78	0.27	1.92	103,106,107,107	0
2	GAL	A	420	11/12	0.64	0.31	-	109,111,112,114	0

6.4 Ligands [i](#)

In the following table, the Atoms column lists the number of modelled atoms in the group and the number defined in the chemical component dictionary. LLDF column lists the quality of electron density of the group with respect to its neighbouring residues in protein, DNA or RNA chains. The B-factors column lists the minimum, median, 95th percentile and maximum values of B factors of atoms in the group. The column labelled 'Q < 0.9' lists the number of atoms with occupancy less than 0.9.

Mol	Type	Chain	Res	Atoms	RSCC	RSR	LLDF	B-factors(Å ²)	Q<0.9
3	SO4	A	700	5/5	0.88	0.46	4.45	112,113,114,114	0
5	L3P	A	260	59/59	0.64	0.46	4.32	73,99,108,109	13
6	L2P	A	270	46/46	0.71	0.32	4.09	78,96,118,118	0
5	L3P	A	290	50/59	0.36	0.47	4.04	130,135,147,147	0
5	L3P	A	280	40/59	0.51	0.35	3.18	101,118,127,127	0
4	RET	A	250	20/21	0.94	0.24	2.76	47,50,52,53	0
5	L3P	A	300	50/59	0.45	0.40	2.66	118,126,134,135	0

6.5 Other polymers [i](#)

There are no such residues in this entry.