



wwPDB X-ray Structure Validation Summary Report ⓘ

Mar 1, 2018 – 11:35 AM EST

PDB ID : 2X2U
Title : First two Cadherin-like domains from Human RET
Authors : Kjaer, S.; Hanrahan, S.; Purkiss-Trew, A.G.; Totty, N.; McDonald, N.Q.
Deposited on : 2010-01-15
Resolution : 2.00 Å(reported)

This is a wwPDB X-ray Structure Validation Summary Report for a publicly released PDB entry.

We welcome your comments at validation@mail.wwpdb.org

A user guide is available at

<http://wwpdb.org/validation/2016/XrayValidationReportHelp>

with specific help available everywhere you see the ⓘ symbol.

The following versions of software and data (see [references ⓘ](#)) were used in the production of this report:

MolProbity : 4.02b-467
Mogul : 1.7.2 (RC1), CSD as538be (2017)
Xtriage (Phenix) : 1.9-1692
EDS : rb-20030736
Percentile statistics : 20161228.v01 (using entries in the PDB archive December 28th 2016)
Refmac : 5.8.0135
CCP4 : 6.5.0
Ideal geometry (proteins) : Engh & Huber (2001)
Ideal geometry (DNA, RNA) : Parkinson et al. (1996)
Validation Pipeline (wwPDB-VP) : rb-20030736

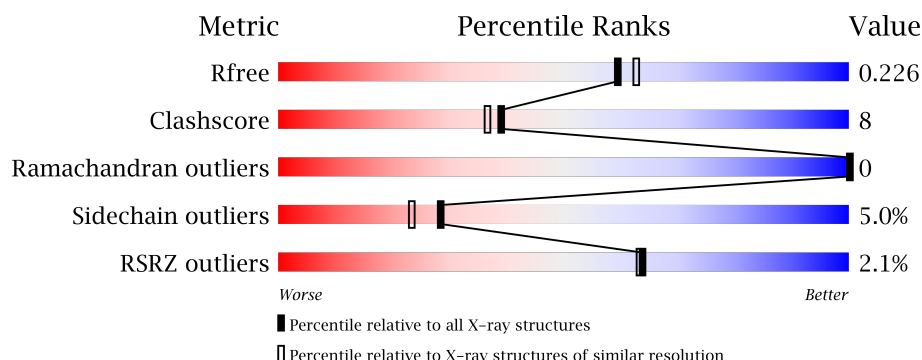
1 Overall quality at a glance

The following experimental techniques were used to determine the structure:

X-RAY DIFFRACTION

The reported resolution of this entry is 2.00 Å.

Percentile scores (ranging between 0-100) for global validation metrics of the entry are shown in the following graphic. The table shows the number of entries on which the scores are based.



Metric	Whole archive (#Entries)	Similar resolution (#Entries, resolution range(Å))
R_{free}	100719	6609 (2.00-2.00)
Clashscore	112137	7775 (2.00-2.00)
Ramachandran outliers	110173	7679 (2.00-2.00)
Sidechain outliers	110143	7678 (2.00-2.00)
RSRZ outliers	101464	6696 (2.00-2.00)

The table below summarises the geometric issues observed across the polymeric chains and their fit to the electron density. The red, orange, yellow and green segments on the lower bar indicate the fraction of residues that contain outliers for ≥ 3 , 2, 1 and 0 types of geometric quality criteria. A grey segment represents the fraction of residues that are not modelled. The numeric value for each fraction is indicated below the corresponding segment, with a dot representing fractions $\leq 5\%$. The upper red bar (where present) indicates the fraction of residues that have poor fit to the electron density. The numeric value is given above the bar.

Mol	Chain	Length	Quality of chain
1	A	246	<div> <div>2%</div> <div>78%</div> <div>16%</div> <div>••</div> </div>

The following table lists non-polymeric compounds, carbohydrate monomers and non-standard residues in protein, DNA, RNA chains that are outliers for geometric or electron-density-fit criteria:

Mol	Type	Chain	Res	Chirality	Geometry	Clashes	Electron density
2	NAG	A	501	-	-	-	X
3	UNX	A	1287	-	-	X	-

Continued on next page...

Continued from previous page...

Mol	Type	Chain	Res	Chirality	Geometry	Clashes	Electron density
3	UNX	A	1290	-	-	X	-
3	UNX	A	1291	-	-	X	-
4	SO4	A	1277	-	-	-	X
4	SO4	A	1278	-	-	-	X
4	SO4	A	1282[A]	-	-	-	X
4	SO4	A	1282[B]	-	-	-	X
5	BU1	A	1293	-	-	-	X
5	BU1	A	1294	-	-	X	X

2 Entry composition [i](#)

There are 6 unique types of molecules in this entry. The entry contains 2237 atoms, of which 0 are hydrogens and 0 are deuteriums.

In the tables below, the ZeroOcc column contains the number of atoms modelled with zero occupancy, the AltConf column contains the number of residues with at least one atom in alternate conformation and the Trace column contains the number of residues modelled with at most 2 atoms.

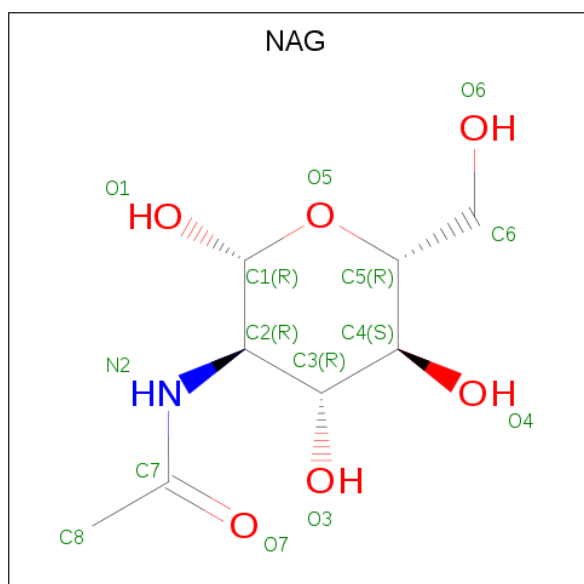
- Molecule 1 is a protein called PROTO-ONCOGENE TYROSINE-PROTEIN KINASE RECEPTOR RET.

Mol	Chain	Residues	Atoms					ZeroOcc	AltConf	Trace
1	A	236	Total	C	N	O	S	0	2	0
			1928	1248	329	344	7			

There are 8 discrepancies between the modelled and reference sequences:

Chain	Residue	Modelled	Actual	Comment	Reference
A	87	ARG	CYS	engineered mutation	UNP P07949
A	98	GLN	ASN	engineered mutation	UNP P07949
A	199	GLN	ASN	engineered mutation	UNP P07949
A	216	SER	CYS	engineered mutation	UNP P07949
A	271	GLU	-	expression tag	UNP P07949
A	272	PHE	-	expression tag	UNP P07949
A	273	GLU	-	expression tag	UNP P07949
A	274	ASN	-	expression tag	UNP P07949

- Molecule 2 is N-ACETYL-D-GLUCOSAMINE (three-letter code: NAG) (formula: C₈H₁₅NO₆).



Mol	Chain	Residues	Atoms				ZeroOcc	AltConf
2	A	1	Total	C	N	O	0	0
			14	8	1	5		
2	A	1	Total	C	N	O	0	0
			11	6	1	4		

- Molecule 3 is UNKNOWN ATOM OR ION (three-letter code: UNX) (formula: X).

Mol	Chain	Residues	Atoms		ZeroOcc	AltConf
3	A	11	Total	X	0	0
			11	11		

- Molecule 4 is SULFATE ION (three-letter code: SO4) (formula: O₄S).



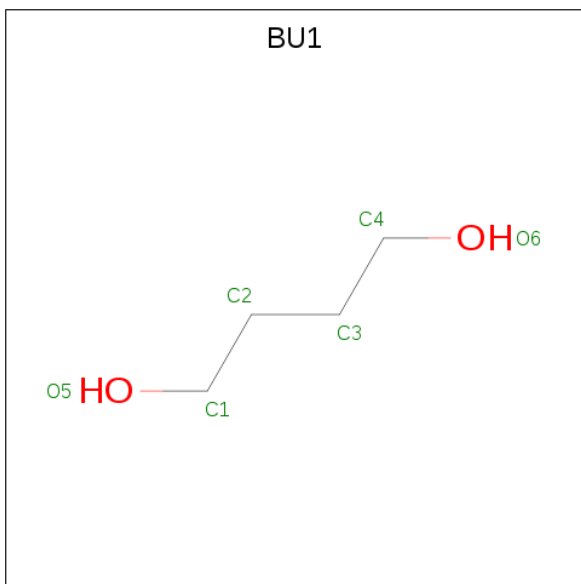
Mol	Chain	Residues	Atoms			ZeroOcc	AltConf
4	A	1	Total	O	S	0	0
			5	4	1		
4	A	1	Total	O	S	0	0
			5	4	1		
4	A	1	Total	O	S	0	0
			5	4	1		
4	A	1	Total	O	S	0	0
			5	4	1		
4	A	1	Total	O	S	0	0
			5	4	1		
4	A	1	Total	O	S	0	0
			5	4	1		

Continued on next page...

Continued from previous page...

Mol	Chain	Residues	Atoms			ZeroOcc	AltConf
4	A	1	Total	O	S	0	1
			10	8	2		

- Molecule 5 is 1,4-BUTANEDIOL (three-letter code: BU1) (formula: C₄H₁₀O₂).



Mol	Chain	Residues	Atoms			ZeroOcc	AltConf
5	A	1	Total	C	O	0	0
			6	4	2		
5	A	1	Total	C	O	0	0
			6	4	2		

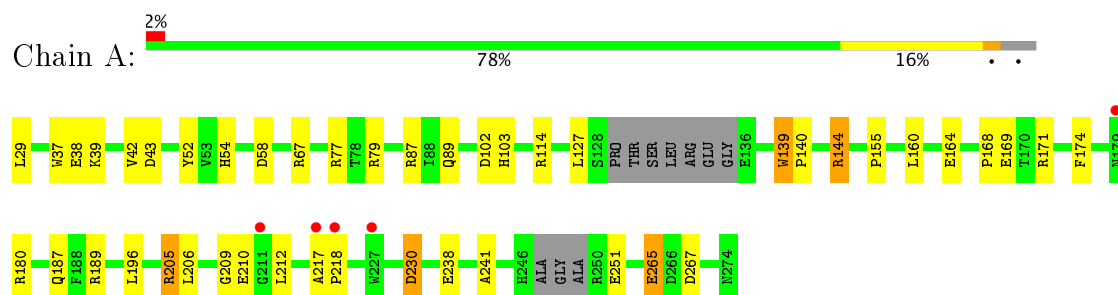
- Molecule 6 is water.

Mol	Chain	Residues	Atoms		ZeroOcc	AltConf
6	A	216	Total	O	0	0
			216	216		

3 Residue-property plots [i](#)

These plots are drawn for all protein, RNA and DNA chains in the entry. The first graphic for a chain summarises the proportions of the various outlier classes displayed in the second graphic. The second graphic shows the sequence view annotated by issues in geometry and electron density. Residues are color-coded according to the number of geometric quality criteria for which they contain at least one outlier: green = 0, yellow = 1, orange = 2 and red = 3 or more. A red dot above a residue indicates a poor fit to the electron density ($\text{RSRZ} > 2$). Stretches of 2 or more consecutive residues without any outlier are shown as a green connector. Residues present in the sample, but not in the model, are shown in grey.

- Molecule 1: PROTO-ONCOGENE TYROSINE-PROTEIN KINASE RECEPTOR RET



4 Data and refinement statistics

Property	Value	Source
Space group	P 43 21 2	Depositor
Cell constants a, b, c, α , β , γ	86.07Å 86.07Å 110.47Å 90.00° 90.00° 90.00°	Depositor
Resolution (Å)	33.86 – 2.00 33.86 – 2.00	Depositor EDS
% Data completeness (in resolution range)	99.7 (33.86-2.00) 99.7 (33.86-2.00)	Depositor EDS
R_{merge}	0.08	Depositor
R_{sym}	(Not available)	Depositor
$\langle I/\sigma(I) \rangle$ ¹	4.49 (at 2.00Å)	Xtriage
Refinement program	REFMAC 5.2.0019	Depositor
R, R_{free}	0.181 , 0.228 0.180 , 0.226	Depositor DCC
R_{free} test set	1447 reflections (5.33%)	DCC
Wilson B-factor (Å ²)	30.0	Xtriage
Anisotropy	0.024	Xtriage
Bulk solvent k_{sol} (e/Å ³), B_{sol} (Å ²)	0.38 , 56.3	EDS
L-test for twinning ²	$\langle L \rangle = 0.50$, $\langle L^2 \rangle = 0.33$	Xtriage
Estimated twinning fraction	No twinning to report.	Xtriage
F_o, F_c correlation	0.96	EDS
Total number of atoms	2237	wwPDB-VP
Average B, all atoms (Å ²)	32.0	wwPDB-VP

Xtriage's analysis on translational NCS is as follows: *The largest off-origin peak in the Patterson function is 6.79% of the height of the origin peak. No significant pseudotranslation is detected.*

¹Intensities estimated from amplitudes.

²Theoretical values of $\langle |L| \rangle$, $\langle L^2 \rangle$ for acentric reflections are 0.5, 0.333 respectively for untwinned datasets, and 0.375, 0.2 for perfectly twinned datasets.

5 Model quality [i](#)

5.1 Standard geometry [i](#)

Bond lengths and bond angles in the following residue types are not validated in this section: UNX, BU1, NAG, SO4

The Z score for a bond length (or angle) is the number of standard deviations the observed value is removed from the expected value. A bond length (or angle) with $|Z| > 5$ is considered an outlier worth inspection. RMSZ is the root-mean-square of all Z scores of the bond lengths (or angles).

Mol	Chain	Bond lengths		Bond angles	
		RMSZ	$\# Z > 5$	RMSZ	$\# Z > 5$
1	A	1.53	7/1997 (0.4%)	1.25	11/2719 (0.4%)

Chiral center outliers are detected by calculating the chiral volume of a chiral center and verifying if the center is modelled as a planar moiety or with the opposite hand. A planarity outlier is detected by checking planarity of atoms in a peptide group, atoms in a mainchain group or atoms of a sidechain that are expected to be planar.

Mol	Chain	#Chirality outliers	#Planarity outliers
1	A	0	1

The worst 5 of 7 bond length outliers are listed below:

Mol	Chain	Res	Type	Atoms	Z	Observed(Å)	Ideal(Å)
1	A	251	GLU	CB-CG	-7.96	1.37	1.52
1	A	174	PHE	CE1-CZ	6.67	1.50	1.37
1	A	187	GLN	CB-CG	-6.31	1.35	1.52
1	A	241	ALA	CA-CB	5.54	1.64	1.52
1	A	205	ARG	CZ-NH2	5.42	1.40	1.33

The worst 5 of 11 bond angle outliers are listed below:

Mol	Chain	Res	Type	Atoms	Z	Observed(°)	Ideal(°)
1	A	205	ARG	NE-CZ-NH2	11.12	125.86	120.30
1	A	144	ARG	NE-CZ-NH2	9.48	125.04	120.30
1	A	144	ARG	NE-CZ-NH1	-8.55	116.03	120.30
1	A	205	ARG	NE-CZ-NH1	-7.58	116.51	120.30
1	A	230	ASP	CB-CG-OD1	6.77	124.39	118.30

There are no chirality outliers.

All (1) planarity outliers are listed below:

Mol	Chain	Res	Type	Group
1	A	206	LEU	Peptide

5.2 Too-close contacts ⓘ

In the following table, the Non-H and H(model) columns list the number of non-hydrogen atoms and hydrogen atoms in the chain respectively. The H(added) column lists the number of hydrogen atoms added and optimized by MolProbity. The Clashes column lists the number of clashes within the asymmetric unit, whereas Symm-Clashes lists symmetry related clashes.

Mol	Chain	Non-H	H(model)	H(added)	Clashes	Symm-Clashes
1	A	1928	0	1822	26	0
2	A	25	0	21	0	0
3	A	11	0	0	6	0
4	A	45	0	0	3	0
5	A	12	0	20	10	0
6	A	216	0	0	6	0
All	All	2237	0	1863	33	0

The all-atom clashscore is defined as the number of clashes found per 1000 atoms (including hydrogen atoms). The all-atom clashscore for this structure is 8.

The worst 5 of 33 close contacts within the same asymmetric unit are listed below, sorted by their clash magnitude.

Atom-1	Atom-2	Interatomic distance (Å)	Clash overlap (Å)
1:A:87[B]:ARG:NH2	6:A:2060:HOH:O	1.94	0.99
3:A:1283:UNX:UNK	3:A:1284:UNX:UNK	1.00	0.91
3:A:1285:UNX:UNK	3:A:1287:UNX:UNK	1.24	0.82
1:A:54:HIS:NE2	4:A:1282[A]:SO4:O3	2.29	0.65
1:A:164:GLU:HB3	5:A:1293:BU1:H31	1.77	0.64

There are no symmetry-related clashes.

5.3 Torsion angles ⓘ

5.3.1 Protein backbone ⓘ

In the following table, the Percentiles column shows the percent Ramachandran outliers of the chain as a percentile score with respect to all X-ray entries followed by that with respect to entries of similar resolution.

The Analysed column shows the number of residues for which the backbone conformation was

analysed, and the total number of residues.

Mol	Chain	Analysed	Favoured	Allowed	Outliers	Percentiles	
1	A	232/246 (94%)	226 (97%)	6 (3%)	0	100	100

There are no Ramachandran outliers to report.

5.3.2 Protein sidechains ⓘ

In the following table, the Percentiles column shows the percent sidechain outliers of the chain as a percentile score with respect to all X-ray entries followed by that with respect to entries of similar resolution.

The Analysed column shows the number of residues for which the sidechain conformation was analysed, and the total number of residues.

Mol	Chain	Analysed	Rotameric	Outliers	Percentiles	
1	A	204/221 (92%)	194 (95%)	10 (5%)	29	24

5 of 10 residues with a non-rotameric sidechain are listed below:

Mol	Chain	Res	Type
1	A	171	ARG
1	A	180	ARG
1	A	230	ASP
1	A	127	LEU
1	A	205	ARG

Some sidechains can be flipped to improve hydrogen bonding and reduce clashes. All (1) such sidechains are listed below:

Mol	Chain	Res	Type
1	A	246	HIS

5.3.3 RNA ⓘ

There are no RNA molecules in this entry.

5.4 Non-standard residues in protein, DNA, RNA chains ⓘ

There are no non-standard protein/DNA/RNA residues in this entry.

5.5 Carbohydrates [i](#)

There are no carbohydrates in this entry.

5.6 Ligand geometry [i](#)

Of 24 ligands modelled in this entry, 11 are unknown - leaving 13 for Mogul analysis.

In the following table, the Counts columns list the number of bonds (or angles) for which Mogul statistics could be retrieved, the number of bonds (or angles) that are observed in the model and the number of bonds (or angles) that are defined in the Chemical Component Dictionary. The Link column lists molecule types, if any, to which the group is linked. The Z score for a bond length (or angle) is the number of standard deviations the observed value is removed from the expected value. A bond length (or angle) with $|Z| > 2$ is considered an outlier worth inspection. RMSZ is the root-mean-square of all Z scores of the bond lengths (or angles).

Mol	Type	Chain	Res	Link	Bond lengths			Bond angles		
					Counts	RMSZ	# Z > 2	Counts	RMSZ	# Z > 2
4	SO4	A	1275	-	4,4,4	1.13	1 (25%)	6,6,6	1.51	1 (16%)
4	SO4	A	1276	-	4,4,4	0.39	0	6,6,6	1.43	1 (16%)
4	SO4	A	1277	-	4,4,4	0.39	0	6,6,6	0.39	0
4	SO4	A	1278	-	4,4,4	0.54	0	6,6,6	0.59	0
4	SO4	A	1279	-	4,4,4	0.36	0	6,6,6	0.41	0
4	SO4	A	1280	-	4,4,4	0.33	0	6,6,6	0.38	0
4	SO4	A	1281	-	4,4,4	0.25	0	6,6,6	1.14	0
4	SO4	A	1282[A]	-	4,4,4	0.44	0	6,6,6	0.47	0
4	SO4	A	1282[B]	-	4,4,4	0.34	0	6,6,6	1.63	0
5	BU1	A	1293	-	5,5,5	1.44	1 (20%)	4,4,4	2.35	1 (25%)
5	BU1	A	1294	-	5,5,5	0.82	0	4,4,4	1.46	1 (25%)
2	NAG	A	501	1,2	14,14,15	1.35	3 (21%)	15,19,21	3.19	7 (46%)
2	NAG	A	502	2	11,11,15	0.83	1 (9%)	11,15,21	1.99	1 (9%)

In the following table, the Chirals column lists the number of chiral outliers, the number of chiral centers analysed, the number of these observed in the model and the number defined in the Chemical Component Dictionary. Similar counts are reported in the Torsion and Rings columns. '-' means no outliers of that kind were identified.

Mol	Type	Chain	Res	Link	Chirals	Torsions	Rings
4	SO4	A	1275	-	-	0/0/0/0	0/0/0/0
4	SO4	A	1276	-	-	0/0/0/0	0/0/0/0
4	SO4	A	1277	-	-	0/0/0/0	0/0/0/0
4	SO4	A	1278	-	-	0/0/0/0	0/0/0/0
4	SO4	A	1279	-	-	0/0/0/0	0/0/0/0

Continued on next page...

Continued from previous page...

Mol	Type	Chain	Res	Link	Chirals	Torsions	Rings
4	SO4	A	1280	-	-	0/0/0/0	0/0/0/0
4	SO4	A	1281	-	-	0/0/0/0	0/0/0/0
4	SO4	A	1282[A]	-	-	0/0/0/0	0/0/0/0
4	SO4	A	1282[B]	-	-	0/0/0/0	0/0/0/0
5	BU1	A	1293	-	-	0/3/3/3	0/0/0/0
5	BU1	A	1294	-	-	0/3/3/3	0/0/0/0
2	NAG	A	501	1,2	-	0/6/23/26	0/1/1/1
2	NAG	A	502	2	-	0/2/19/26	0/1/1/1

The worst 5 of 6 bond length outliers are listed below:

Mol	Chain	Res	Type	Atoms	Z	Observed(Å)	Ideal(Å)
2	A	501	NAG	C4-C3	2.04	1.57	1.52
2	A	502	NAG	C1-C2	2.08	1.54	1.52
4	A	1275	SO4	O1-S	2.20	1.57	1.45
5	A	1293	BU1	O6-C4	2.25	1.53	1.42
2	A	501	NAG	C2-N2	2.26	1.50	1.46

The worst 5 of 12 bond angle outliers are listed below:

Mol	Chain	Res	Type	Atoms	Z	Observed(°)	Ideal(°)
5	A	1293	BU1	C3-C2-C1	-4.58	84.21	114.14
5	A	1294	BU1	C3-C2-C1	-2.42	98.31	114.14
2	A	501	NAG	O7-C7-C8	-2.28	117.90	122.06
4	A	1276	SO4	O4-S-O3	-2.13	99.38	108.96
2	A	501	NAG	C1-C2-N2	2.10	114.08	110.49

There are no chirality outliers.

There are no torsion outliers.

There are no ring outliers.

5 monomers are involved in 13 short contacts:

Mol	Chain	Res	Type	Clashes	Symm-Clashes
4	A	1277	SO4	1	0
4	A	1282[A]	SO4	1	0
4	A	1282[B]	SO4	1	0
5	A	1293	BU1	2	0
5	A	1294	BU1	8	0

5.7 Other polymers [i](#)

There are no such residues in this entry.

5.8 Polymer linkage issues [i](#)

There are no chain breaks in this entry.

6 Fit of model and data [i](#)

6.1 Protein, DNA and RNA chains [i](#)

In the following table, the column labelled ‘#RSRZ> 2’ contains the number (and percentage) of RSRZ outliers, followed by percent RSRZ outliers for the chain as percentile scores relative to all X-ray entries and entries of similar resolution. The OWAB column contains the minimum, median, 95th percentile and maximum values of the occupancy-weighted average B-factor per residue. The column labelled ‘Q< 0.9’ lists the number of (and percentage) of residues with an average occupancy less than 0.9.

Mol	Chain	Analysed	<RSRZ>	#RSRZ>2	OWAB(Å ²)	Q<0.9
1	A	236/246 (95%)	-0.09	5 (2%) 64 63	17, 29, 48, 53	0

All (5) RSRZ outliers are listed below:

Mol	Chain	Res	Type	RSRZ
1	A	217	ALA	3.7
1	A	211	GLY	3.3
1	A	218	PRO	2.7
1	A	179	ASN	2.2
1	A	227	TRP	2.1

6.2 Non-standard residues in protein, DNA, RNA chains [i](#)

There are no non-standard protein/DNA/RNA residues in this entry.

6.3 Carbohydrates [i](#)

There are no carbohydrates in this entry.

6.4 Ligands [i](#)

In the following table, the Atoms column lists the number of modelled atoms in the group and the number defined in the chemical component dictionary. LLDF column lists the quality of electron density of the group with respect to its neighbouring residues in protein, DNA or RNA chains. The B-factors column lists the minimum, median, 95th percentile and maximum values of B factors of atoms in the group. The column labelled ‘Q< 0.9’ lists the number of atoms with occupancy less than 0.9.

Mol	Type	Chain	Res	Atoms	RSCC	RSR	LLDF	B-factors(Å ²)	Q<0.9
4	SO4	A	1282[A]	5/5	0.88	0.26	4.50	31,36,40,44	5

Continued on next page...

Continued from previous page...

Mol	Type	Chain	Res	Atoms	RSCC	RSR	LLDF	B-factors(\AA^2)	Q<0.9
4	SO4	A	1282[B]	5/5	0.88	0.26	4.31	29,30,39,42	5
5	BU1	A	1293	6/6	0.82	0.22	3.69	30,35,39,46	0
2	NAG	A	501	14/15	0.71	0.35	3.04	66,72,77,78	0
5	BU1	A	1294	6/6	0.96	0.17	2.38	24,34,38,39	0
4	SO4	A	1277	5/5	0.97	0.20	2.18	62,64,67,67	0
4	SO4	A	1278	5/5	0.82	0.18	2.11	79,81,84,87	0
4	SO4	A	1275	5/5	0.92	0.13	0.57	47,52,57,57	0
4	SO4	A	1280	5/5	0.94	0.18	0.00	88,89,90,90	0
4	SO4	A	1276	5/5	0.97	0.10	-0.04	39,48,50,51	0
3	UNX	A	1286	1/1	0.99	0.39	-	21,21,21,21	1
4	SO4	A	1281	5/5	0.90	0.23	-	81,83,84,84	0
3	UNX	A	1289	1/1	0.84	1.21	-	33,33,33,33	1
2	NAG	A	502	11/15	0.81	0.42	-	81,84,86,89	0
3	UNX	A	1290	1/1	1.00	0.17	-	11,11,11,11	1
3	UNX	A	1288	1/1	0.94	0.55	-	30,30,30,30	1
3	UNX	A	1291	1/1	0.99	0.22	-	15,15,15,15	1
3	UNX	A	1297	1/1	0.93	0.76	-	23,23,23,23	1
4	SO4	A	1279	5/5	0.93	0.20	-	79,80,81,82	0
3	UNX	A	1287	1/1	1.00	0.23	-	27,27,27,27	1
3	UNX	A	1283	1/1	0.98	0.45	-	25,25,25,25	1
3	UNX	A	1284	1/1	0.98	0.51	-	24,24,24,24	1
3	UNX	A	1292	1/1	0.98	0.43	-	14,14,14,14	1
3	UNX	A	1285	1/1	0.99	0.22	-	17,17,17,17	1

6.5 Other polymers ⓘ

There are no such residues in this entry.