



# Full wwPDB X-ray Structure Validation Report ⓘ

Nov 28, 2017 – 05:30 PM EST

PDB ID : 5X5M  
Title : Crystal structure of a hydrolase encoded by lin2189 from *Listeria innocua*  
Authors : Zhang, J.  
Deposited on : unknown  
Resolution : 1.21 Å(reported)

This is a Full wwPDB X-ray Structure Validation Report for a publicly released PDB entry.

We welcome your comments at [validation@mail.wwpdb.org](mailto:validation@mail.wwpdb.org)

A user guide is available at

<http://wwpdb.org/validation/2016/XrayValidationReportHelp>

with specific help available everywhere you see the ⓘ symbol.

---

The following versions of software and data (see [references ⓘ](#)) were used in the production of this report:

MolProbity : 4.02b-467  
Mogul : 1.7.2 (RC1), CSD as538be (2017)  
Xtriage (Phenix) : 1.9-1692  
EDS : rb-20030345  
Percentile statistics : 20161228.v01 (using entries in the PDB archive December 28th 2016)  
Refmac : 5.8.0135  
CCP4 : 6.5.0  
Ideal geometry (proteins) : Engh & Huber (2001)  
Ideal geometry (DNA, RNA) : Parkinson et al. (1996)  
Validation Pipeline (wwPDB-VP) : rb-20030345

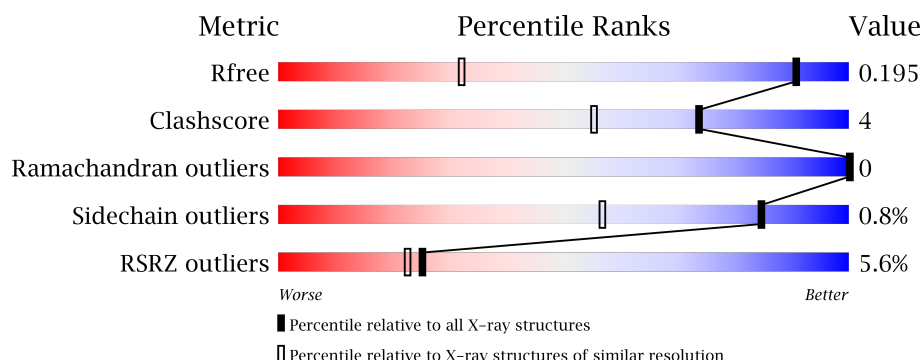
# 1 Overall quality at a glance

The following experimental techniques were used to determine the structure:

## *X-RAY DIFFRACTION*

The reported resolution of this entry is 1.21 Å.

Percentile scores (ranging between 0-100) for global validation metrics of the entry are shown in the following graphic. The table shows the number of entries on which the scores are based.



Metric	Whole archive (#Entries)	Similar resolution (#Entries, resolution range(Å))
$R_{free}$	100719	1464 (1.26-1.18)
Clashscore	112137	1560 (1.26-1.18)
Ramachandran outliers	110173	1499 (1.26-1.18)
Sidechain outliers	110143	1497 (1.26-1.18)
RSRZ outliers	101464	1466 (1.26-1.18)

The table below summarises the geometric issues observed across the polymeric chains and their fit to the electron density. The red, orange, yellow and green segments on the lower bar indicate the fraction of residues that contain outliers for  $\geq 3$ , 2, 1 and 0 types of geometric quality criteria. A grey segment represents the fraction of residues that are not modelled. The numeric value for each fraction is indicated below the corresponding segment, with a dot representing fractions  $\leq 5\%$ . The upper red bar (where present) indicates the fraction of residues that have poor fit to the electron density. The numeric value is given above the bar.

Mol	Chain	Length	Quality of chain
1	A	216	<div> <div>3%</div> <div>87%</div> <div>8%</div> <div>5%</div> </div>
1	B	216	<div> <div>7%</div> <div>88%</div> <div>7%</div> <div>5%</div> </div>

The following table lists non-polymeric compounds, carbohydrate monomers and non-standard residues in protein, DNA, RNA chains that are outliers for geometric or electron-density-fit criteria:

Mol	Type	Chain	Res	Chirality	Geometry	Clashes	Electron density
2	DMS	B	301	-	-	-	X

## 2 Entry composition

There are 4 unique types of molecules in this entry. The entry contains 3920 atoms, of which 0 are hydrogens and 0 are deuteriums.

In the tables below, the ZeroOcc column contains the number of atoms modelled with zero occupancy, the AltConf column contains the number of residues with at least one atom in alternate conformation and the Trace column contains the number of residues modelled with at most 2 atoms.

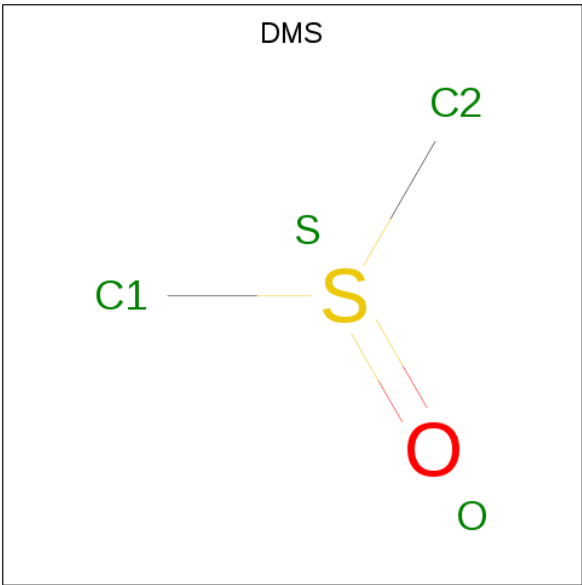
- Molecule 1 is a protein called Lin2189 protein.

Mol	Chain	Residues	Atoms					ZeroOcc	AltConf	Trace
1	A	205	Total	C	N	O	S	0	2	0
			1697	1089	287	311	10			
1	B	205	Total	C	N	O	S	0	0	0
			1689	1084	287	308	10			

There are 22 discrepancies between the modelled and reference sequences:

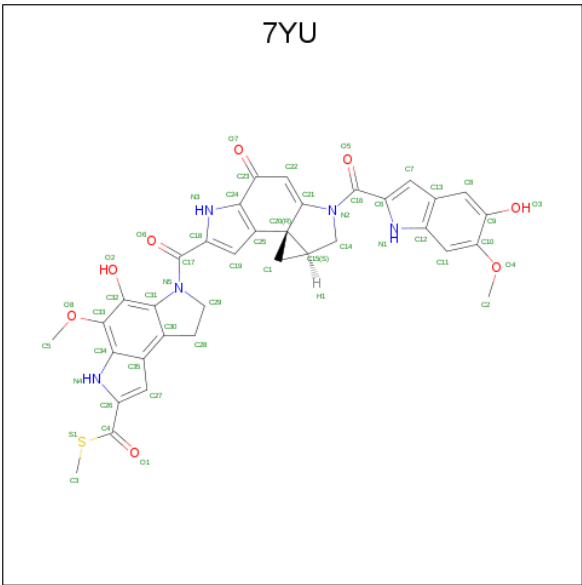
Chain	Residue	Modelled	Actual	Comment	Reference
A	-7	MET	-	expression tag	UNP Q929T5
A	-6	GLY	-	expression tag	UNP Q929T5
A	-5	SER	-	expression tag	UNP Q929T5
A	-4	HIS	-	expression tag	UNP Q929T5
A	-3	HIS	-	expression tag	UNP Q929T5
A	-2	HIS	-	expression tag	UNP Q929T5
A	-1	HIS	-	expression tag	UNP Q929T5
A	0	HIS	-	expression tag	UNP Q929T5
A	1	HIS	-	expression tag	UNP Q929T5
A	157	ALA	GLU	engineered mutation	UNP Q929T5
A	185	LEU	GLU	engineered mutation	UNP Q929T5
B	-7	MET	-	expression tag	UNP Q929T5
B	-6	GLY	-	expression tag	UNP Q929T5
B	-5	SER	-	expression tag	UNP Q929T5
B	-4	HIS	-	expression tag	UNP Q929T5
B	-3	HIS	-	expression tag	UNP Q929T5
B	-2	HIS	-	expression tag	UNP Q929T5
B	-1	HIS	-	expression tag	UNP Q929T5
B	0	HIS	-	expression tag	UNP Q929T5
B	1	HIS	-	expression tag	UNP Q929T5
B	157	ALA	GLU	engineered mutation	UNP Q929T5
B	185	LEU	GLU	engineered mutation	UNP Q929T5

- Molecule 2 is DIMETHYL SULFOXIDE (three-letter code: DMS) (formula: C<sub>2</sub>H<sub>6</sub>OS).



Mol	Chain	Residues	Atoms				ZeroOcc	AltConf
2	A	1	Total	C	O	S	0	0
			4	2	1	1		
2	B	1	Total	C	O	S	0	0
			4	2	1	1		

- Molecule 3 is (+)-Yatakemycin (three-letter code: 7YU) (formula: C<sub>35</sub>H<sub>29</sub>N<sub>5</sub>O<sub>8</sub>S).



Mol	Chain	Residues	Atoms				ZeroOcc	AltConf
3	A	1	Total	C	N	O	S	0
			49	35	5	8	1	
3	B	1	Total	C	N	O	S	0
			49	35	5	8	1	

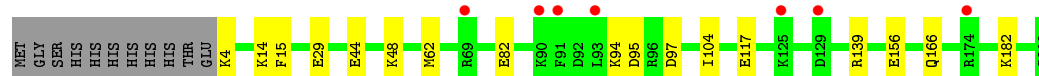
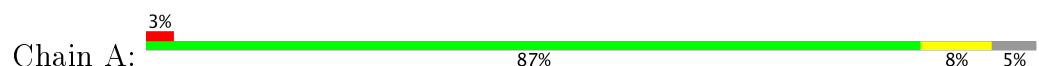
- Molecule 4 is water.

Mol	Chain	Residues	Atoms		ZeroOcc	AltConf
4	A	235	Total 235	O 235	0	0
4	B	193	Total 193	O 193	0	0

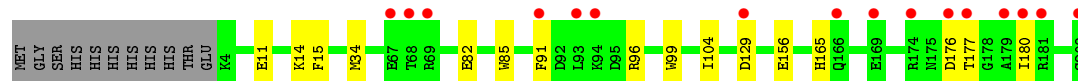
### 3 Residue-property plots [i](#)

These plots are drawn for all protein, RNA and DNA chains in the entry. The first graphic for a chain summarises the proportions of the various outlier classes displayed in the second graphic. The second graphic shows the sequence view annotated by issues in geometry and electron density. Residues are color-coded according to the number of geometric quality criteria for which they contain at least one outlier: green = 0, yellow = 1, orange = 2 and red = 3 or more. A red dot above a residue indicates a poor fit to the electron density ( $RSRZ > 2$ ). Stretches of 2 or more consecutive residues without any outlier are shown as a green connector. Residues present in the sample, but not in the model, are shown in grey.

#### • Molecule 1: Lin2189 protein



#### • Molecule 1: Lin2189 protein



## 4 Data and refinement statistics

Property	Value	Source
Space group	C 1 2 1	Depositor
Cell constants a, b, c, $\alpha$ , $\beta$ , $\gamma$	119.63 Å   49.30 Å   80.36 Å 90.00°   124.98°   90.00°	Depositor
Resolution (Å)	44.04 – 1.21 44.04 – 1.21	Depositor EDS
% Data completeness (in resolution range)	96.1 (44.04-1.21) 96.1 (44.04-1.21)	Depositor EDS
$R_{merge}$	0.06	Depositor
$R_{sym}$	(Not available)	Depositor
$\langle I/\sigma(I) \rangle$ <sup>1</sup>	3.89 (at 1.21 Å)	Xtriage
Refinement program	PHENIX (1.10.1 _2155: ???)	Depositor
R, $R_{free}$	0.180   ,   0.195 0.180   ,   0.195	Depositor DCC
$R_{free}$ test set	5601 reflections (5.00%)	DCC
Wilson B-factor (Å <sup>2</sup> )	14.5	Xtriage
Anisotropy	0.008	Xtriage
Bulk solvent $k_{sol}$ (e/Å <sup>3</sup> ), $B_{sol}$ (Å <sup>2</sup> )	0.39 , 51.4	EDS
L-test for twinning <sup>2</sup>	$\langle  L  \rangle = 0.49$ , $\langle L^2 \rangle = 0.32$	Xtriage
Estimated twinning fraction	No twinning to report.	Xtriage
$F_o, F_c$ correlation	0.97	EDS
Total number of atoms	3920	wwPDB-VP
Average B, all atoms (Å <sup>2</sup> )	19.0	wwPDB-VP

Xtriage's analysis on translational NCS is as follows: *The analyses of the Patterson function reveals a significant off-origin peak that is 25.02 % of the origin peak, indicating pseudo translational symmetry. The chance of finding a peak of this or larger height randomly in a structure without pseudo translational symmetry is equal to 3.4326e-03.*

<sup>1</sup>Intensities estimated from amplitudes.

<sup>2</sup>Theoretical values of  $\langle |L| \rangle$ ,  $\langle L^2 \rangle$  for acentric reflections are 0.5, 0.333 respectively for untwinned datasets, and 0.375, 0.2 for perfectly twinned datasets.



## 5 Model quality

### 5.1 Standard geometry

Bond lengths and bond angles in the following residue types are not validated in this section: 7YU, DMS

The Z score for a bond length (or angle) is the number of standard deviations the observed value is removed from the expected value. A bond length (or angle) with  $|Z| > 5$  is considered an outlier worth inspection. RMSZ is the root-mean-square of all Z scores of the bond lengths (or angles).

Mol	Chain	Bond lengths		Bond angles	
		RMSZ	$\# Z  > 5$	RMSZ	$\# Z  > 5$
1	A	0.33	0/1746	0.58	0/2348
1	B	0.33	0/1732	0.58	0/2329
All	All	0.33	0/3478	0.58	0/4677

There are no bond length outliers.

There are no bond angle outliers.

There are no chirality outliers.

There are no planarity outliers.

### 5.2 Too-close contacts

In the following table, the Non-H and H(model) columns list the number of non-hydrogen atoms and hydrogen atoms in the chain respectively. The H(added) column lists the number of hydrogen atoms added and optimized by MolProbity. The Clashes column lists the number of clashes within the asymmetric unit, whereas Symm-Clashes lists symmetry related clashes.

Mol	Chain	Non-H	H(model)	H(added)	Clashes	Symm-Clashes
1	A	1697	0	1693	12	0
1	B	1689	0	1684	16	0
2	A	4	0	6	0	0
2	B	4	0	6	0	0
3	A	49	0	0	0	0
3	B	49	0	0	1	0
4	A	235	0	0	4	0
4	B	193	0	0	6	0
All	All	3920	0	3389	26	0

The all-atom clashscore is defined as the number of clashes found per 1000 atoms (including hydrogen atoms). The all-atom clashscore for this structure is 4.

All (26) close contacts within the same asymmetric unit are listed below, sorted by their clash magnitude.

Atom-1	Atom-2	Interatomic distance (Å)	Clash overlap (Å)
1:A:156:GLU:OE2	4:A:401:HOH:O	1.87	0.92
1:B:177:THR:HB	4:B:429:HOH:O	1.73	0.86
1:B:156:GLU:OE2	4:B:401:HOH:O	2.05	0.73
1:A:182:LYS:NZ	4:A:403:HOH:O	2.21	0.72
1:B:129:ASP:OD1	4:B:402:HOH:O	2.07	0.72
1:B:176:ASP:OD1	4:B:403:HOH:O	2.17	0.59
1:A:95:ASP:OD2	1:B:14:LYS:HD3	2.05	0.57
1:B:96:ARG:HG2	1:B:99:TRP:CZ2	2.41	0.55
1:B:165:HIS:CE1	1:B:180:ILE:HD11	2.44	0.53
1:B:14:LYS:NZ	4:B:406:HOH:O	2.38	0.53
1:A:117:GLU:OE2	4:A:402:HOH:O	2.19	0.51
1:B:165:HIS:HE1	1:B:180:ILE:HD11	1.75	0.50
1:A:82:GLU:HB2	1:A:104:ILE:HG12	1.94	0.49
1:B:14:LYS:HE2	1:B:15:PHE:CZ	2.49	0.48
1:A:29:GLU:OE2	1:A:139:ARG:HD3	2.17	0.44
1:A:97[B]:ASP:HB2	1:B:11:GLU:O	2.16	0.44
1:A:166:GLN:HG3	4:A:458:HOH:O	2.17	0.44
1:A:82:GLU:HB2	1:A:104:ILE:CG1	2.49	0.43
1:A:44:GLU:HG2	1:A:48:LYS:HE2	2.01	0.43
1:B:85:TRP:CZ2	1:B:91:PHE:HA	2.55	0.42
1:A:14:LYS:HE3	1:A:15:PHE:CZ	2.55	0.42
1:B:34:MET:HG2	1:B:104:ILE:HG22	2.02	0.42
1:B:82:GLU:HB2	1:B:104:ILE:HG12	2.02	0.41
1:A:97[A]:ASP:HB3	1:B:11:GLU:O	2.19	0.41
3:B:302:7YU:C14	3:B:302:7YU:C7	2.99	0.41
1:B:177:THR:CB	4:B:429:HOH:O	2.48	0.40

There are no symmetry-related clashes.

## 5.3 Torsion angles [i](#)

### 5.3.1 Protein backbone [i](#)

In the following table, the Percentiles column shows the percent Ramachandran outliers of the chain as a percentile score with respect to all X-ray entries followed by that with respect to entries of similar resolution.

The Analysed column shows the number of residues for which the backbone conformation was analysed, and the total number of residues.

Mol	Chain	Analysed	Favoured	Allowed	Outliers	Percentiles	
1	A	205/216 (95%)	203 (99%)	2 (1%)	0	100	100
1	B	203/216 (94%)	198 (98%)	5 (2%)	0	100	100
All	All	408/432 (94%)	401 (98%)	7 (2%)	0	100	100

There are no Ramachandran outliers to report.

### 5.3.2 Protein sidechains ⓘ

In the following table, the Percentiles column shows the percent sidechain outliers of the chain as a percentile score with respect to all X-ray entries followed by that with respect to entries of similar resolution.

The Analysed column shows the number of residues for which the sidechain conformation was analysed, and the total number of residues.

Mol	Chain	Analysed	Rotameric	Outliers	Percentiles	
1	A	185/193 (96%)	182 (98%)	3 (2%)	68	28
1	B	183/193 (95%)	183 (100%)	0	100	100
All	All	368/386 (95%)	365 (99%)	3 (1%)	85	57

All (3) residues with a non-rotameric sidechain are listed below:

Mol	Chain	Res	Type
1	A	4	LYS
1	A	62	MET
1	A	94	LYS

Some sidechains can be flipped to improve hydrogen bonding and reduce clashes. All (1) such sidechains are listed below:

Mol	Chain	Res	Type
1	A	51	GLN

### 5.3.3 RNA ⓘ

There are no RNA molecules in this entry.

## 5.4 Non-standard residues in protein, DNA, RNA chains ⓘ

There are no non-standard protein/DNA/RNA residues in this entry.

## 5.5 Carbohydrates [i](#)

There are no carbohydrates in this entry.

## 5.6 Ligand geometry [i](#)

4 ligands are modelled in this entry.

In the following table, the Counts columns list the number of bonds (or angles) for which Mogul statistics could be retrieved, the number of bonds (or angles) that are observed in the model and the number of bonds (or angles) that are defined in the Chemical Component Dictionary. The Link column lists molecule types, if any, to which the group is linked. The Z score for a bond length (or angle) is the number of standard deviations the observed value is removed from the expected value. A bond length (or angle) with  $|Z| > 2$  is considered an outlier worth inspection. RMSZ is the root-mean-square of all Z scores of the bond lengths (or angles).

Mol	Type	Chain	Res	Link	Bond lengths			Bond angles		
					Counts	RMSZ	# $ Z  > 2$	Counts	RMSZ	# $ Z  > 2$
2	DMS	A	301	-	3,3,3	0.63	0	3,3,3	0.28	0
3	7YU	A	302	-	50,57,57	3.97	28 (56%)	59,91,91	5.57	22 (37%)
2	DMS	B	301	-	3,3,3	0.62	0	3,3,3	0.16	0
3	7YU	B	302	-	50,57,57	3.64	27 (54%)	59,91,91	5.21	24 (40%)

In the following table, the Chirals column lists the number of chiral outliers, the number of chiral centers analysed, the number of these observed in the model and the number defined in the Chemical Component Dictionary. Similar counts are reported in the Torsion and Rings columns. '-' means no outliers of that kind were identified.

Mol	Type	Chain	Res	Link	Chirals	Torsions	Rings
2	DMS	A	301	-	-	0/0/0/0	0/0/0/0
3	7YU	A	302	-	-	0/16/71/71	0/8/9/9
2	DMS	B	301	-	-	0/0/0/0	0/0/0/0
3	7YU	B	302	-	-	0/16/71/71	0/8/9/9

All (55) bond length outliers are listed below:

Mol	Chain	Res	Type	Atoms	Z	Observed(Å)	Ideal(Å)
3	B	302	7YU	C19-C18	-10.41	1.21	1.39
3	A	302	7YU	C7-C6	-10.14	1.21	1.39
3	A	302	7YU	C19-C18	-10.10	1.21	1.39
3	A	302	7YU	O5-C16	-7.40	1.07	1.22
3	B	302	7YU	C31-C30	-6.61	1.29	1.40
3	B	302	7YU	C7-C6	-6.48	1.28	1.39
3	A	302	7YU	C31-C30	-6.43	1.30	1.40

*Continued on next page...*

*Continued from previous page...*

Mol	Chain	Res	Type	Atoms	Z	Observed(Å)	Ideal(Å)
3	B	302	7YU	C27-C26	-6.24	1.28	1.39
3	B	302	7YU	C18-N3	-6.19	1.18	1.37
3	A	302	7YU	C18-N3	-5.93	1.19	1.37
3	B	302	7YU	C11-C12	-5.92	1.32	1.41
3	A	302	7YU	C27-C26	-5.80	1.29	1.39
3	B	302	7YU	C33-C34	-5.74	1.34	1.42
3	A	302	7YU	C29-N5	-4.86	1.40	1.47
3	B	302	7YU	O5-C16	-4.00	1.14	1.22
3	A	302	7YU	C33-C34	-3.78	1.37	1.42
3	B	302	7YU	C29-N5	-3.61	1.42	1.47
3	A	302	7YU	O6-C17	-3.41	1.15	1.22
3	B	302	7YU	O6-C17	-3.15	1.16	1.22
3	A	302	7YU	C24-C23	-3.03	1.45	1.49
3	A	302	7YU	O1-C4	-2.81	1.16	1.21
3	A	302	7YU	C11-C12	-2.61	1.37	1.41
3	A	302	7YU	C1-C20	-2.57	1.48	1.52
3	B	302	7YU	C32-C33	-2.55	1.35	1.39
3	A	302	7YU	C32-C33	-2.40	1.35	1.39
3	B	302	7YU	O1-C4	-2.39	1.16	1.21
3	B	302	7YU	C22-C21	-2.27	1.31	1.38
3	B	302	7YU	C24-C23	-2.16	1.46	1.49
3	B	302	7YU	C1-C20	-2.06	1.49	1.52
3	B	302	7YU	C12-N1	2.05	1.45	1.39
3	A	302	7YU	C22-C23	2.17	1.49	1.44
3	B	302	7YU	C28-C30	2.26	1.54	1.51
3	A	302	7YU	C19-C25	2.30	1.45	1.40
3	A	302	7YU	C8-C9	2.46	1.39	1.37
3	B	302	7YU	C22-C23	2.55	1.50	1.44
3	A	302	7YU	C28-C30	2.76	1.55	1.51
3	B	302	7YU	C30-C35	2.76	1.48	1.43
3	A	302	7YU	O4-C10	2.78	1.41	1.37
3	B	302	7YU	C19-C25	2.86	1.47	1.40
3	A	302	7YU	C12-N1	3.20	1.49	1.39
3	A	302	7YU	C21-N2	3.52	1.51	1.40
3	B	302	7YU	C14-N2	3.93	1.53	1.47
3	A	302	7YU	C30-C35	4.01	1.50	1.43
3	B	302	7YU	C34-N4	4.04	1.43	1.38
3	B	302	7YU	C17-N5	4.08	1.43	1.36
3	A	302	7YU	C14-N2	4.40	1.53	1.47
3	A	302	7YU	C34-N4	4.85	1.44	1.38
3	B	302	7YU	C31-C32	4.90	1.52	1.41
3	B	302	7YU	O7-C23	5.10	1.35	1.24

*Continued on next page...*

*Continued from previous page...*

Mol	Chain	Res	Type	Atoms	Z	Observed(Å)	Ideal(Å)
3	A	302	7YU	C31-C32	5.15	1.52	1.41
3	A	302	7YU	C17-N5	5.64	1.46	1.36
3	B	302	7YU	C8-C9	5.75	1.43	1.37
3	A	302	7YU	O7-C23	6.13	1.37	1.24
3	B	302	7YU	C24-C25	8.42	1.58	1.40
3	A	302	7YU	C24-C25	9.15	1.59	1.40

All (46) bond angle outliers are listed below:

Mol	Chain	Res	Type	Atoms	Z	Observed(°)	Ideal(°)
3	A	302	7YU	C1-C20-C25	-26.46	90.33	119.41
3	B	302	7YU	C1-C20-C25	-24.07	92.96	119.41
3	A	302	7YU	C25-C20-C21	-10.95	112.71	117.92
3	B	302	7YU	C25-C20-C21	-10.34	113.00	117.92
3	A	302	7YU	C22-C21-N2	-7.98	120.97	129.14
3	B	302	7YU	C22-C21-N2	-6.63	122.35	129.14
3	A	302	7YU	C9-C8-C13	-6.36	116.28	121.23
3	B	302	7YU	C9-C8-C13	-6.17	116.42	121.23
3	B	302	7YU	C7-C13-C12	-5.48	101.50	106.27
3	A	302	7YU	O5-C16-C6	-4.66	109.36	118.93
3	A	302	7YU	C10-C11-C12	-4.26	114.60	119.98
3	B	302	7YU	C35-C34-N4	-3.74	102.16	108.88
3	B	302	7YU	O7-C23-C24	-3.54	117.20	121.60
3	A	302	7YU	C27-C35-C34	-3.34	103.33	106.33
3	A	302	7YU	C7-C13-C12	-3.30	103.40	106.27
3	A	302	7YU	O7-C23-C24	-3.19	117.63	121.60
3	B	302	7YU	C29-C28-C30	-2.73	98.98	103.18
3	B	302	7YU	C27-C35-C34	-2.60	104.00	106.33
3	B	302	7YU	C10-C11-C12	-2.57	116.74	119.98
3	A	302	7YU	C35-C34-N4	-2.38	104.60	108.88
3	B	302	7YU	O4-C10-C11	-2.30	122.44	125.25
3	A	302	7YU	C1-C15-C20	-2.26	59.27	61.44
3	B	302	7YU	C8-C13-C12	-2.25	116.73	119.87
3	B	302	7YU	C29-N5-C31	-2.15	106.91	109.42
3	B	302	7YU	O3-C9-C10	-2.08	115.35	120.14
3	A	302	7YU	O3-C9-C10	-2.05	115.43	120.14
3	B	302	7YU	C29-N5-C17	2.26	128.44	122.49
3	A	302	7YU	C11-C12-C13	2.29	124.06	121.14
3	B	302	7YU	C18-C17-N5	2.42	123.28	118.45
3	B	302	7YU	O4-C10-C9	2.50	117.60	114.55
3	A	302	7YU	C26-N4-C34	2.55	109.12	103.94
3	A	302	7YU	C29-N5-C17	2.69	129.57	122.49

*Continued on next page...*

*Continued from previous page...*

Mol	Chain	Res	Type	Atoms	Z	Observed(°)	Ideal(°)
3	B	302	7YU	C26-N4-C34	3.51	111.07	103.94
3	A	302	7YU	C15-C14-N2	4.69	106.14	103.69
3	B	302	7YU	C11-C12-C13	4.88	127.37	121.14
3	A	302	7YU	C26-C27-C35	6.75	115.62	106.70
3	B	302	7YU	C26-C27-C35	6.87	115.78	106.70
3	A	302	7YU	C6-C16-N2	7.24	132.93	118.45
3	B	302	7YU	C19-C25-C20	7.45	145.37	128.37
3	B	302	7YU	C6-C7-C13	7.50	115.92	106.55
3	A	302	7YU	C19-C25-C20	7.77	146.11	128.37
3	A	302	7YU	C20-C21-C22	8.31	128.61	122.90
3	A	302	7YU	C6-C7-C13	10.26	119.36	106.55
3	B	302	7YU	C20-C21-C22	11.62	130.89	122.90
3	B	302	7YU	C1-C15-C14	18.46	143.29	115.63
3	A	302	7YU	C1-C15-C14	20.03	145.64	115.63

There are no chirality outliers.

There are no torsion outliers.

There are no ring outliers.

1 monomer is involved in 1 short contact:

Mol	Chain	Res	Type	Clashes	Symm-Clashes
3	B	302	7YU	1	0

## 5.7 Other polymers [i](#)

There are no such residues in this entry.

## 5.8 Polymer linkage issues [i](#)

There are no chain breaks in this entry.

## 6 Fit of model and data ⓘ

### 6.1 Protein, DNA and RNA chains ⓘ

In the following table, the column labelled ‘#RSRZ> 2’ contains the number (and percentage) of RSRZ outliers, followed by percent RSRZ outliers for the chain as percentile scores relative to all X-ray entries and entries of similar resolution. The OWAB column contains the minimum, median, 95<sup>th</sup> percentile and maximum values of the occupancy-weighted average B-factor per residue. The column labelled ‘Q< 0.9’ lists the number of (and percentage) of residues with an average occupancy less than 0.9.

Mol	Chain	Analysed	<RSRZ>	#RSRZ>2	OWAB(Å <sup>2</sup> )	Q<0.9
1	A	205/216 (94%)	0.22	7 (3%) 46 40	11, 15, 30, 37	1 (0%)
1	B	205/216 (94%)	0.50	16 (7%) 14 12	11, 18, 31, 44	0
All	All	410/432 (94%)	0.36	23 (5%) 25 23	11, 17, 31, 44	1 (0%)

All (23) RSRZ outliers are listed below:

Mol	Chain	Res	Type	RSRZ
1	B	177	THR	7.3
1	B	179	ALA	5.7
1	B	180	ILE	4.7
1	A	93	LEU	4.1
1	A	91	PHE	4.0
1	B	69	ARG	3.6
1	B	129	ASP	3.4
1	A	90	LYS	3.4
1	B	176	ASP	2.9
1	B	67	GLU	2.7
1	B	169	GLU	2.7
1	B	174	ARG	2.7
1	B	93	LEU	2.6
1	B	94	LYS	2.5
1	B	68	THR	2.5
1	A	69	ARG	2.5
1	B	181	ARG	2.3
1	A	129	ASP	2.3
1	B	166	GLN	2.2
1	A	174	ARG	2.2
1	B	208	SER	2.1
1	A	125	LYS	2.0
1	B	91	PHE	2.0



## 6.2 Non-standard residues in protein, DNA, RNA chains [i](#)

There are no non-standard protein/DNA/RNA residues in this entry.

## 6.3 Carbohydrates [i](#)

There are no carbohydrates in this entry.

## 6.4 Ligands [i](#)

In the following table, the Atoms column lists the number of modelled atoms in the group and the number defined in the chemical component dictionary. LLDF column lists the quality of electron density of the group with respect to its neighbouring residues in protein, DNA or RNA chains. The B-factors column lists the minimum, median, 95<sup>th</sup> percentile and maximum values of B factors of atoms in the group. The column labelled 'Q< 0.9' lists the number of atoms with occupancy less than 0.9.

Mol	Type	Chain	Res	Atoms	RSCC	RSR	LLDF	B-factors( $\text{\AA}^2$ )	Q<0.9
2	DMS	B	301	4/4	0.98	0.11	2.68	13,15,18,19	2
2	DMS	A	301	4/4	0.98	0.09	1.00	13,14,17,19	2
3	7YU	A	302	49/49	0.90	0.13	0.97	17,24,32,34	0
3	7YU	B	302	49/49	0.90	0.10	-0.13	17,20,25,30	0

## 6.5 Other polymers [i](#)

There are no such residues in this entry.