



# wwPDB X-ray Structure Validation Summary Report ⓘ

Aug 22, 2017 – 05:13 AM EDT

PDB ID : 5X69  
Title : Human thymidylate synthase with a fragment bound in the dimer interface  
Authors : Chen, D.; Jansson, A.; Larsson, A.; Nordlund, P.  
Deposited on : unknown  
Resolution : 2.69 Å(reported)

This is a wwPDB X-ray Structure Validation Summary Report for a publicly released PDB entry.

We welcome your comments at [validation@mail.wwpdb.org](mailto:validation@mail.wwpdb.org)

A user guide is available at

<http://wwpdb.org/validation/2016/XrayValidationReportHelp>

with specific help available everywhere you see the ⓘ symbol.

---

The following versions of software and data (see [references ⓘ](#)) were used in the production of this report:

MolProbity : 4.02b-467  
Mogul : 1.7.2 (RC1), CSD as538be (2017)  
Xtriage (Phenix) : 1.9-1692  
EDS : rb-20029824  
Percentile statistics : 20161228.v01 (using entries in the PDB archive December 28th 2016)  
Refmac : 5.8.0135  
CCP4 : 6.5.0  
Ideal geometry (proteins) : Engh & Huber (2001)  
Ideal geometry (DNA, RNA) : Parkinson et al. (1996)  
Validation Pipeline (wwPDB-VP) : rb-20029824

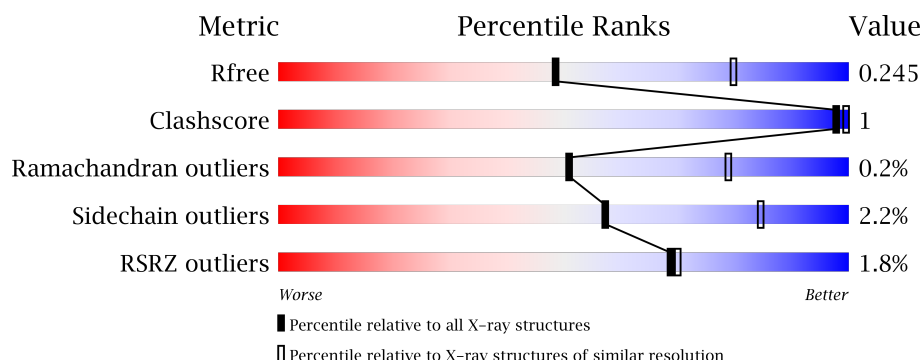
# 1 Overall quality at a glance

The following experimental techniques were used to determine the structure:

*X-RAY DIFFRACTION*

The reported resolution of this entry is 2.69 Å.

Percentile scores (ranging between 0-100) for global validation metrics of the entry are shown in the following graphic. The table shows the number of entries on which the scores are based.



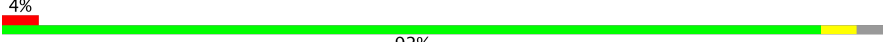
Metric	Whole archive (#Entries)	Similar resolution (#Entries, resolution range(Å))
$R_{free}$	100719	2259 (2.70-2.70)
Clashscore	112137	2590 (2.70-2.70)
Ramachandran outliers	110173	2550 (2.70-2.70)
Sidechain outliers	110143	2550 (2.70-2.70)
RSRZ outliers	101464	2275 (2.70-2.70)

The table below summarises the geometric issues observed across the polymeric chains and their fit to the electron density. The red, orange, yellow and green segments on the lower bar indicate the fraction of residues that contain outliers for  $\geq 3$ , 2, 1 and 0 types of geometric quality criteria. A grey segment represents the fraction of residues that are not modelled. The numeric value for each fraction is indicated below the corresponding segment, with a dot representing fractions  $\leq 5\%$ . The upper red bar (where present) indicates the fraction of residues that have poor fit to the electron density. The numeric value is given above the bar.

Mol	Chain	Length	Quality of chain
1	A	290	<div> <div>4%</div> <div>94%</div> <div>5%</div> </div>
1	B	290	<div> <div>96%</div> </div>
1	C	290	<div> <div>92%</div> </div>
1	D	290	<div> <div>4%</div> <div>93%</div> <div>5%</div> </div>
1	E	290	<div> <div>89%</div> <div>6%</div> <div>5%</div> </div>

*Continued on next page...*

*Continued from previous page...*

Mol	Chain	Length	Quality of chain
1	F	290	

The following table lists non-polymeric compounds, carbohydrate monomers and non-standard residues in protein, DNA, RNA chains that are outliers for geometric or electron-density-fit criteria:

Mol	Type	Chain	Res	Chirality	Geometry	Clashes	Electron density
2	7ZC	A	401	-	-	-	X
2	7ZC	E	401	-	-	-	X

## 2 Entry composition

There are 4 unique types of molecules in this entry. The entry contains 13691 atoms, of which 0 are hydrogens and 0 are deuteriums.

In the tables below, the ZeroOcc column contains the number of atoms modelled with zero occupancy, the AltConf column contains the number of residues with at least one atom in alternate conformation and the Trace column contains the number of residues modelled with at most 2 atoms.

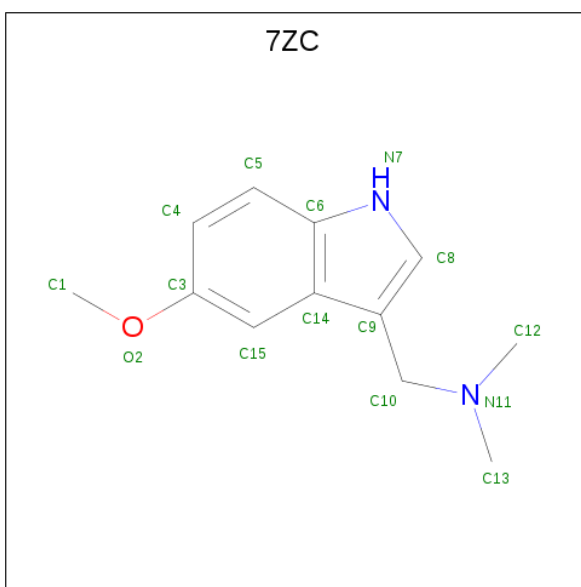
- Molecule 1 is a protein called Thymidylate synthase.

Mol	Chain	Residues	Atoms					ZeroOcc	AltConf	Trace
1	A	287	Total	C	N	O	S	0	0	0
			2298	1470	403	413	12			
1	B	286	Total	C	N	O	S	0	0	0
			2289	1464	401	412	12			
1	C	277	Total	C	N	O	S	0	0	0
			2204	1415	384	394	11			
1	D	285	Total	C	N	O	S	0	0	0
			2267	1452	399	404	12			
1	E	276	Total	C	N	O	S	0	0	0
			2214	1421	388	394	11			
1	F	281	Total	C	N	O	S	0	0	0
			2230	1429	388	402	11			

There are 12 discrepancies between the modelled and reference sequences:

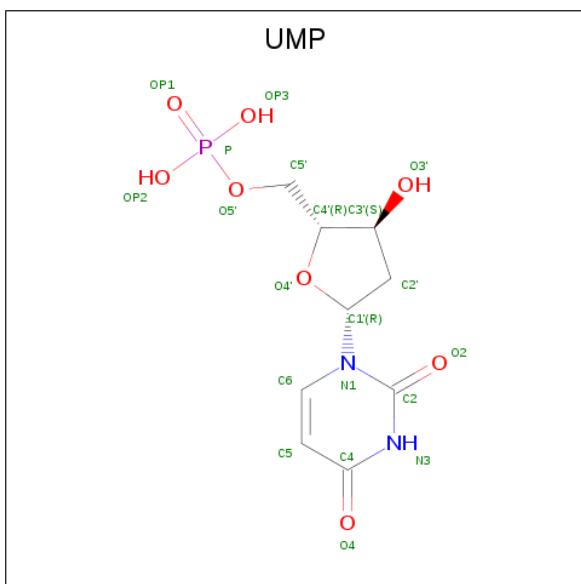
Chain	Residue	Modelled	Actual	Comment	Reference
A	24	SER	-	expression tag	UNP P04818
A	25	MET	-	expression tag	UNP P04818
B	24	SER	-	expression tag	UNP P04818
B	25	MET	-	expression tag	UNP P04818
C	24	SER	-	expression tag	UNP P04818
C	25	MET	-	expression tag	UNP P04818
D	24	SER	-	expression tag	UNP P04818
D	25	MET	-	expression tag	UNP P04818
E	24	SER	-	expression tag	UNP P04818
E	25	MET	-	expression tag	UNP P04818
F	24	SER	-	expression tag	UNP P04818
F	25	MET	-	expression tag	UNP P04818

- Molecule 2 is 1-(5-methoxy-1H-indol-3-yl)-N,N-dimethyl-methanamine (three-letter code: 7ZC) (formula: C<sub>12</sub>H<sub>16</sub>N<sub>2</sub>O).



Mol	Chain	Residues	Atoms				ZeroOcc	AltConf
2	A	1	Total	C	N	O	0	0
			15	12	2	1		
2	E	1	Total	C	N	O	0	0
			15	12	2	1		

- Molecule 3 is 2'-DEOXYURIDINE 5'-MONOPHOSPHATE (three-letter code: UMP) (formula:  $C_9H_{13}N_2O_8P$ ).



Mol	Chain	Residues	Atoms					ZeroOcc	AltConf
3	A	1	Total	C	N	O	P	0	0
			20	9	2	8	1		

*Continued on next page...*

*Continued from previous page...*

Mol	Chain	Residues	Atoms					ZeroOcc	AltConf
3	B	1	Total	C	N	O	P	0	0
			20	9	2	8	1		
3	D	1	Total	C	N	O	P	0	0
			20	9	2	8	1		
3	F	1	Total	C	N	O	P	0	0
			20	9	2	8	1		

- Molecule 4 is water.

Mol	Chain	Residues	Atoms		ZeroOcc	AltConf
4	A	17	Total	O	0	0
			17	17		
4	B	15	Total	O	0	0
			15	15		
4	C	9	Total	O	0	0
			9	9		
4	D	11	Total	O	0	0
			11	11		
4	E	19	Total	O	0	0
			19	19		
4	F	8	Total	O	0	0
			8	8		

### 3 Residue-property plots [i](#)

These plots are drawn for all protein, RNA and DNA chains in the entry. The first graphic for a chain summarises the proportions of the various outlier classes displayed in the second graphic. The second graphic shows the sequence view annotated by issues in geometry and electron density. Residues are color-coded according to the number of geometric quality criteria for which they contain at least one outlier: green = 0, yellow = 1, orange = 2 and red = 3 or more. A red dot above a residue indicates a poor fit to the electron density ( $RSRZ > 2$ ). Stretches of 2 or more consecutive residues without any outlier are shown as a green connector. Residues present in the sample, but not in the model, are shown in grey.

- Molecule 1: Thymidylate synthase

Chain A: 



- Molecule 1: Thymidylate synthase

Chain B: 



- Molecule 1: Thymidylate synthase

Chain C: 



- Molecule 1: Thymidylate synthase

Chain D: 

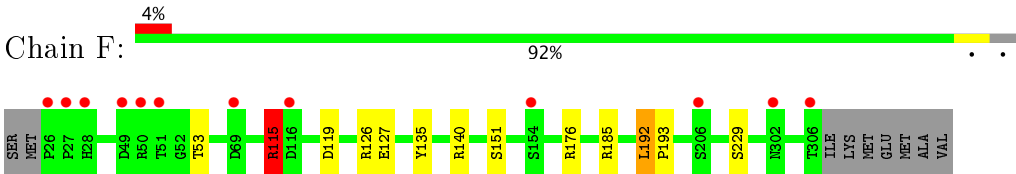


- Molecule 1: Thymidylate synthase

Chain E: 



- Molecule 1: Thymidylate synthase





## 4 Data and refinement statistics

Property	Value	Source
Space group	P 43 21 2	Depositor
Cell constants a, b, c, $\alpha$ , $\beta$ , $\gamma$	109.35Å 109.35Å 315.38Å 90.00° 90.00° 90.00°	Depositor
Resolution (Å)	22.18 – 2.69 22.18 – 2.69	Depositor EDS
% Data completeness (in resolution range)	98.2 (22.18-2.69) 98.5 (22.18-2.69)	Depositor EDS
$R_{merge}$	0.11	Depositor
$R_{sym}$	(Not available)	Depositor
$\langle I/\sigma(I) \rangle$ <sup>1</sup>	7.40 (at 2.67Å)	Xtriage
Refinement program	REFMAC 5.8.0155	Depositor
R, $R_{free}$	0.209 , 0.245 0.213 , 0.245	Depositor DCC
$R_{free}$ test set	2698 reflections (5.34%)	DCC
Wilson B-factor (Å <sup>2</sup> )	41.6	Xtriage
Anisotropy	0.267	Xtriage
Bulk solvent $k_{sol}$ (e/Å <sup>3</sup> ), $B_{sol}$ (Å <sup>2</sup> )	0.31 , 23.2	EDS
L-test for twinning <sup>2</sup>	$\langle  L  \rangle = 0.49$ , $\langle L^2 \rangle = 0.32$	Xtriage
Estimated twinning fraction	No twinning to report.	Xtriage
$F_o, F_c$ correlation	0.95	EDS
Total number of atoms	13691	wwPDB-VP
Average B, all atoms (Å <sup>2</sup> )	40.0	wwPDB-VP

Xtriage's analysis on translational NCS is as follows: *The analyses of the Patterson function reveals a significant off-origin peak that is 58.86 % of the origin peak, indicating pseudo translational symmetry. The chance of finding a peak of this or larger height randomly in a structure without pseudo translational symmetry is equal to 1.9219e-05. The detected translational NCS is most likely also responsible for the elevated intensity ratio.*

<sup>1</sup> Intensities estimated from amplitudes.

<sup>2</sup> Theoretical values of  $\langle |L| \rangle$ ,  $\langle L^2 \rangle$  for acentric reflections are 0.5, 0.333 respectively for untwinned datasets, and 0.375, 0.2 for perfectly twinned datasets.

## 5 Model quality ⓘ

### 5.1 Standard geometry ⓘ

Bond lengths and bond angles in the following residue types are not validated in this section: UMP, 7ZC

The Z score for a bond length (or angle) is the number of standard deviations the observed value is removed from the expected value. A bond length (or angle) with  $|Z| > 5$  is considered an outlier worth inspection. RMSZ is the root-mean-square of all Z scores of the bond lengths (or angles).

Mol	Chain	Bond lengths		Bond angles	
		RMSZ	# $ Z  > 5$	RMSZ	# $ Z  > 5$
1	A	0.74	1/2358 (0.0%)	0.85	3/3192 (0.1%)
1	B	0.70	0/2349	0.85	3/3181 (0.1%)
1	C	0.71	0/2263	0.84	1/3068 (0.0%)
1	D	0.75	1/2327 (0.0%)	0.88	5/3152 (0.2%)
1	E	0.72	0/2273	0.85	5/3077 (0.2%)
1	F	0.71	0/2290	0.87	4/3106 (0.1%)
All	All	0.72	2/13860 (0.0%)	0.85	21/18776 (0.1%)

All (2) bond length outliers are listed below:

Mol	Chain	Res	Type	Atoms	Z	Observed(Å)	Ideal(Å)
1	A	229	SER	CB-OG	-5.62	1.34	1.42
1	D	294	GLU	CD-OE2	5.31	1.31	1.25

The worst 5 of 21 bond angle outliers are listed below:

Mol	Chain	Res	Type	Atoms	Z	Observed(°)	Ideal(°)
1	F	176	ARG	NE-CZ-NH2	9.05	124.82	120.30
1	F	176	ARG	NE-CZ-NH1	-7.47	116.56	120.30
1	E	140	ARG	NE-CZ-NH2	-6.92	116.84	120.30
1	D	294	GLU	CG-CD-OE2	6.86	132.02	118.30
1	D	140	ARG	NE-CZ-NH2	-6.61	117.00	120.30

There are no chirality outliers.

There are no planarity outliers.

## 5.2 Too-close contacts ⓘ

In the following table, the Non-H and H(model) columns list the number of non-hydrogen atoms and hydrogen atoms in the chain respectively. The H(added) column lists the number of hydrogen atoms added and optimized by MolProbity. The Clashes column lists the number of clashes within the asymmetric unit, whereas Symm-Clashes lists symmetry related clashes.

Mol	Chain	Non-H	H(model)	H(added)	Clashes	Symm-Clashes
1	A	2298	0	2258	5	0
1	B	2289	0	2242	1	0
1	C	2204	0	2147	4	0
1	D	2267	0	2217	4	0
1	E	2214	0	2175	7	0
1	F	2230	0	2163	3	0
2	A	15	0	0	2	0
2	E	15	0	0	0	0
3	A	20	0	10	1	0
3	B	20	0	10	1	0
3	D	20	0	10	0	0
3	F	20	0	10	0	0
4	A	17	0	0	0	0
4	B	15	0	0	0	0
4	C	9	0	0	0	0
4	D	11	0	0	0	0
4	E	19	0	0	0	0
4	F	8	0	0	0	0
All	All	13691	0	13242	24	0

The all-atom clashscore is defined as the number of clashes found per 1000 atoms (including hydrogen atoms). The all-atom clashscore for this structure is 1.

The worst 5 of 24 close contacts within the same asymmetric unit are listed below, sorted by their clash magnitude.

Atom-1	Atom-2	Interatomic distance (Å)	Clash overlap (Å)
1:F:192:LEU:HD22	1:F:193:PRO:HD2	1.69	0.75
1:F:115:ARG:NH2	1:F:126:ARG:O	2.20	0.74
1:C:115:ARG:NH2	1:C:126:ARG:O	2.21	0.73
1:D:115:ARG:NH2	1:D:126:ARG:O	2.21	0.72
1:E:115:ARG:NH2	1:E:126:ARG:O	2.22	0.72

There are no symmetry-related clashes.

## 5.3 Torsion angles

### 5.3.1 Protein backbone

In the following table, the Percentiles column shows the percent Ramachandran outliers of the chain as a percentile score with respect to all X-ray entries followed by that with respect to entries of similar resolution.

The Analysed column shows the number of residues for which the backbone conformation was analysed, and the total number of residues.

Mol	Chain	Analysed	Favoured	Allowed	Outliers	Percentiles	
1	A	285/290 (98%)	275 (96%)	9 (3%)	1 (0%)	38	66
1	B	284/290 (98%)	275 (97%)	9 (3%)	0	100	100
1	C	273/290 (94%)	263 (96%)	10 (4%)	0	100	100
1	D	283/290 (98%)	275 (97%)	7 (2%)	1 (0%)	38	66
1	E	272/290 (94%)	265 (97%)	6 (2%)	1 (0%)	38	66
1	F	279/290 (96%)	270 (97%)	8 (3%)	1 (0%)	38	66
All	All	1676/1740 (96%)	1623 (97%)	49 (3%)	4 (0%)	51	79

All (4) Ramachandran outliers are listed below:

Mol	Chain	Res	Type
1	F	135	TYR
1	D	134	VAL
1	A	134	VAL
1	E	134	VAL

### 5.3.2 Protein sidechains

In the following table, the Percentiles column shows the percent sidechain outliers of the chain as a percentile score with respect to all X-ray entries followed by that with respect to entries of similar resolution.

The Analysed column shows the number of residues for which the sidechain conformation was analysed, and the total number of residues.

Mol	Chain	Analysed	Rotameric	Outliers	Percentiles	
1	A	245/253 (97%)	240 (98%)	5 (2%)	60	86
1	B	244/253 (96%)	239 (98%)	5 (2%)	60	86
1	C	233/253 (92%)	228 (98%)	5 (2%)	59	85

*Continued on next page...*

*Continued from previous page...*

Mol	Chain	Analysed	Rotameric	Outliers	Percentiles	
1	D	239/253 (94%)	232 (97%)	7 (3%)	48	77
1	E	236/253 (93%)	233 (99%)	3 (1%)	73	91
1	F	235/253 (93%)	228 (97%)	7 (3%)	46	76
All	All	1432/1518 (94%)	1400 (98%)	32 (2%)	57	84

5 of 32 residues with a non-rotameric sidechain are listed below:

Mol	Chain	Res	Type
1	C	229	SER
1	D	53	THR
1	F	151	SER
1	D	50	ARG
1	D	115	ARG

Some sidechains can be flipped to improve hydrogen bonding and reduce clashes. All (4) such sidechains are listed below:

Mol	Chain	Res	Type
1	A	62	GLN
1	C	62	GLN
1	C	211	GLN
1	F	62	GLN

### 5.3.3 RNA ⓘ

There are no RNA molecules in this entry.

## 5.4 Non-standard residues in protein, DNA, RNA chains ⓘ

There are no non-standard protein/DNA/RNA residues in this entry.

## 5.5 Carbohydrates ⓘ

There are no carbohydrates in this entry.

## 5.6 Ligand geometry ⓘ

6 ligands are modelled in this entry.

In the following table, the Counts columns list the number of bonds (or angles) for which Mogul statistics could be retrieved, the number of bonds (or angles) that are observed in the model and the number of bonds (or angles) that are defined in the chemical component dictionary. The Link column lists molecule types, if any, to which the group is linked. The Z score for a bond length (or angle) is the number of standard deviations the observed value is removed from the expected value. A bond length (or angle) with  $|Z| > 2$  is considered an outlier worth inspection. RMSZ is the root-mean-square of all Z scores of the bond lengths (or angles).

Mol	Type	Chain	Res	Link	Bond lengths			Bond angles		
					Counts	RMSZ	$\# Z  > 2$	Counts	RMSZ	$\# Z  > 2$
2	7ZC	A	401	-	15,16,16	1.88	5 (33%)	15,22,22	1.44	3 (20%)
3	UMP	A	402	-	17,21,21	3.31	5 (29%)	23,31,31	3.50	5 (21%)
3	UMP	B	401	-	17,21,21	3.33	5 (29%)	23,31,31	3.74	7 (30%)
3	UMP	D	401	-	17,21,21	3.40	6 (35%)	23,31,31	3.63	5 (21%)
2	7ZC	E	401	-	15,16,16	1.67	4 (26%)	15,22,22	1.87	3 (20%)
3	UMP	F	401	-	17,21,21	3.28	5 (29%)	23,31,31	3.51	4 (17%)

In the following table, the Chirals column lists the number of chiral outliers, the number of chiral centers analysed, the number of these observed in the model and the number defined in the chemical component dictionary. Similar counts are reported in the Torsion and Rings columns. '-' means no outliers of that kind were identified.

Mol	Type	Chain	Res	Link	Chirals	Torsions	Rings
2	7ZC	A	401	-	-	1/5/6/6	0/2/2/2
3	UMP	A	402	-	-	0/6/22/22	0/2/2/2
3	UMP	B	401	-	-	0/6/22/22	0/2/2/2
3	UMP	D	401	-	-	0/6/22/22	0/2/2/2
2	7ZC	E	401	-	-	0/5/6/6	0/2/2/2
3	UMP	F	401	-	-	0/6/22/22	0/2/2/2

The worst 5 of 30 bond length outliers are listed below:

Mol	Chain	Res	Type	Atoms	Z	Observed(Å)	Ideal(Å)
3	A	402	UMP	C2'-C3'	-3.49	1.43	1.52
3	D	401	UMP	C2'-C3'	-2.99	1.44	1.52
3	B	401	UMP	C2'-C3'	-2.93	1.45	1.52
3	F	401	UMP	C2'-C3'	-2.93	1.45	1.52
3	D	401	UMP	C3'-C4'	-2.79	1.45	1.53

The worst 5 of 27 bond angle outliers are listed below:

Mol	Chain	Res	Type	Atoms	Z	Observed(°)	Ideal(°)
2	E	401	7ZC	C10-C9-C8	-3.62	121.83	127.48

*Continued on next page...*

*Continued from previous page...*

Mol	Chain	Res	Type	Atoms	Z	Observed(°)	Ideal(°)
2	A	401	7ZC	C10-C9-C8	-3.03	122.75	127.48
2	E	401	7ZC	C4-C3-C15	-2.27	117.74	120.82
2	A	401	7ZC	O2-C3-C15	-2.18	118.78	124.49
3	D	401	UMP	C5-C4-N3	-2.04	118.25	123.12

There are no chirality outliers.

All (1) torsion outliers are listed below:

Mol	Chain	Res	Type	Atoms
2	A	401	7ZC	C8-C9-C10-N11

There are no ring outliers.

3 monomers are involved in 4 short contacts:

Mol	Chain	Res	Type	Clashes	Symm-Clashes
2	A	401	7ZC	2	0
3	A	402	UMP	1	0
3	B	401	UMP	1	0

## 5.7 Other polymers [i](#)

There are no such residues in this entry.

## 5.8 Polymer linkage issues [i](#)

There are no chain breaks in this entry.

## 6 Fit of model and data ⓘ

### 6.1 Protein, DNA and RNA chains ⓘ

In the following table, the column labelled ‘#RSRZ> 2’ contains the number (and percentage) of RSRZ outliers, followed by percent RSRZ outliers for the chain as percentile scores relative to all X-ray entries and entries of similar resolution. The OWAB column contains the minimum, median, 95<sup>th</sup> percentile and maximum values of the occupancy-weighted average B-factor per residue. The column labelled ‘Q< 0.9’ lists the number of (and percentage) of residues with an average occupancy less than 0.9.

Mol	Chain	Analysed	<RSRZ>	#RSRZ>2	OWAB(Å <sup>2</sup> )	Q<0.9
1	A	287/290 (98%)	-0.34	3 (1%) 82 82	18, 33, 57, 93	0
1	B	286/290 (98%)	-0.29	1 (0%) 93 94	23, 40, 58, 81	0
1	C	277/290 (95%)	-0.22	1 (0%) 92 93	27, 42, 60, 83	0
1	D	285/290 (98%)	-0.23	11 (3%) 40 39	20, 34, 61, 101	0
1	E	276/290 (95%)	-0.30	2 (0%) 87 88	24, 38, 63, 86	0
1	F	281/290 (96%)	-0.06	12 (4%) 36 34	26, 44, 72, 84	0
All	All	1692/1740 (97%)	-0.24	30 (1%) 69 70	18, 39, 63, 101	0

The worst 5 of 30 RSRZ outliers are listed below:

Mol	Chain	Res	Type	RSRZ
1	A	312	ALA	5.4
1	D	51	THR	5.2
1	D	53	THR	5.1
1	D	27	PRO	4.1
1	D	308	LYS	3.9

### 6.2 Non-standard residues in protein, DNA, RNA chains ⓘ

There are no non-standard protein/DNA/RNA residues in this entry.

### 6.3 Carbohydrates ⓘ

There are no carbohydrates in this entry.



## 6.4 Ligands [i](#)

In the following table, the Atoms column lists the number of modelled atoms in the group and the number defined in the chemical component dictionary. LLDF column lists the quality of electron density of the group with respect to its neighbouring residues in protein, DNA or RNA chains. The B-factors column lists the minimum, median, 95<sup>th</sup> percentile and maximum values of B factors of atoms in the group. The column labelled 'Q< 0.9' lists the number of atoms with occupancy less than 0.9.

Mol	Type	Chain	Res	Atoms	RSCC	RSR	LLDF	B-factors(Å <sup>2</sup> )	Q<0.9
2	7ZC	A	401	15/15	0.77	0.38	4.56	69,80,87,93	0
2	7ZC	E	401	15/15	0.86	0.29	2.98	68,76,85,87	0
3	UMP	D	401	20/20	0.90	0.28	1.41	64,72,81,82	0
3	UMP	B	401	20/20	0.95	0.21	0.85	45,58,65,65	0
3	UMP	F	401	20/20	0.94	0.21	0.68	57,74,82,82	0
3	UMP	A	402	20/20	0.95	0.17	0.50	48,61,73,80	0

## 6.5 Other polymers [i](#)

There are no such residues in this entry.