



Full wwPDB X-ray Structure Validation Report ⓘ

Nov 28, 2017 – 04:44 PM EST

PDB ID : 5XDC
Title : Crystal structure of Indole-bound TdsC from *Paenibacillus* sp. A11-2
Authors : Hino, T.; Hamamoto, H.; Ohshiro, T.; Nagano, S.
Deposited on : unknown
Resolution : 1.58 Å(reported)

This is a Full wwPDB X-ray Structure Validation Report for a publicly released PDB entry.

We welcome your comments at validation@mail.wwpdb.org

A user guide is available at

<http://wwpdb.org/validation/2016/XrayValidationReportHelp>

with specific help available everywhere you see the ⓘ symbol.

The following versions of software and data (see [references ⓘ](#)) were used in the production of this report:

MolProbity : 4.02b-467
Mogul : 1.7.2 (RC1), CSD as538be (2017)
Xtriage (Phenix) : 1.9-1692
EDS : rb-20030345
Percentile statistics : 20161228.v01 (using entries in the PDB archive December 28th 2016)
Refmac : 5.8.0135
CCP4 : 6.5.0
Ideal geometry (proteins) : Engh & Huber (2001)
Ideal geometry (DNA, RNA) : Parkinson et al. (1996)
Validation Pipeline (wwPDB-VP) : rb-20030345

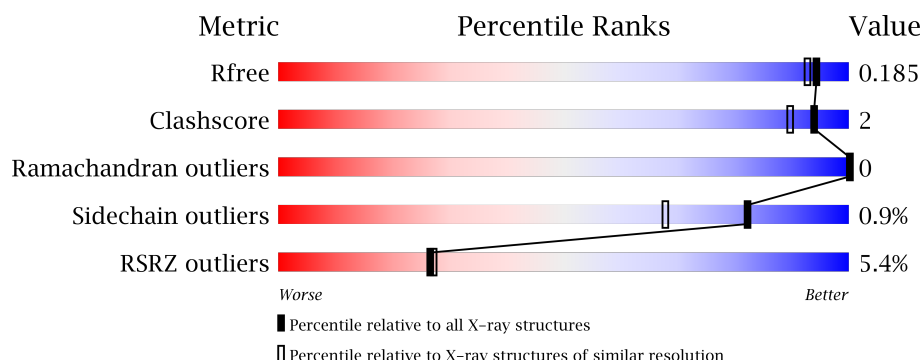
1 Overall quality at a glance

The following experimental techniques were used to determine the structure:

X-RAY DIFFRACTION

The reported resolution of this entry is 1.58 Å.

Percentile scores (ranging between 0-100) for global validation metrics of the entry are shown in the following graphic. The table shows the number of entries on which the scores are based.



Metric	Whole archive (#Entries)	Similar resolution (#Entries, resolution range(Å))
R_{free}	100719	4211 (1.60-1.56)
Clashscore	112137	4539 (1.60-1.56)
Ramachandran outliers	110173	4423 (1.60-1.56)
Sidechain outliers	110143	4420 (1.60-1.56)
RSRZ outliers	101464	4232 (1.60-1.56)

The table below summarises the geometric issues observed across the polymeric chains and their fit to the electron density. The red, orange, yellow and green segments on the lower bar indicate the fraction of residues that contain outliers for ≥ 3 , 2, 1 and 0 types of geometric quality criteria. A grey segment represents the fraction of residues that are not modelled. The numeric value for each fraction is indicated below the corresponding segment, with a dot representing fractions $\leq 5\%$. The upper red bar (where present) indicates the fraction of residues that have poor fit to the electron density. The numeric value is given above the bar.

Mol	Chain	Length	Quality of chain
1	A	414	<div> <div>8%</div> <div>93%</div> <div>• •</div> </div>
1	B	414	<div> <div>5%</div> <div>93%</div> <div>• •</div> </div>
1	C	414	<div> <div>5%</div> <div>93%</div> <div>• •</div> </div>
1	D	414	<div> <div>3%</div> <div>91%</div> <div>• •</div> </div>

The following table lists non-polymeric compounds, carbohydrate monomers and non-standard residues in protein, DNA, RNA chains that are outliers for geometric or electron-density-fit crite-

ria:

Mol	Type	Chain	Res	Chirality	Geometry	Clashes	Electron density
4	GOL	C	506	-	-	-	X

2 Entry composition [i](#)

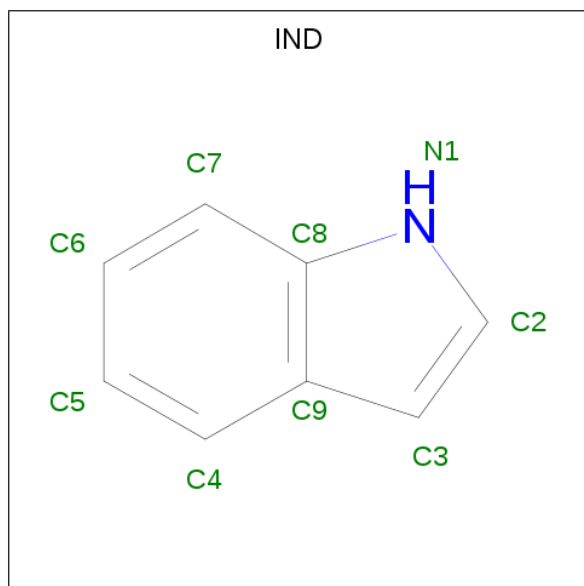
There are 5 unique types of molecules in this entry. The entry contains 26633 atoms, of which 12224 are hydrogens and 0 are deuteriums.

In the tables below, the ZeroOcc column contains the number of atoms modelled with zero occupancy, the AltConf column contains the number of residues with at least one atom in alternate conformation and the Trace column contains the number of residues modelled with at most 2 atoms.

- Molecule 1 is a protein called Thermophilic dibenzothiophene desulfurization enzyme C.

Mol	Chain	Residues	Atoms						ZeroOcc	AltConf	Trace
1	A	401	Total	C	H	N	O	S	0	20	0
			6320	2023	3108	582	603	4			
1	B	402	Total	C	H	N	O	S	0	10	0
			6150	1983	3012	560	591	4			
1	C	401	Total	C	H	N	O	S	0	7	0
			6149	1980	3016	559	590	4			
1	D	396	Total	C	H	N	O	S	0	11	0
			6171	1982	3036	559	590	4			

- Molecule 2 is INDOLE (three-letter code: IND) (formula: C₈H₇N).



Mol	Chain	Residues	Atoms				ZeroOcc	AltConf
2	A	1	Total	C	H	N	0	0
			16	8	7	1		
2	B	1	Total	C	H	N	0	0
			16	8	7	1		

Continued on next page...

Continued from previous page...

Mol	Chain	Residues	Atoms				ZeroOcc	AltConf
2	C	1	Total	C	H	N	0	0
			16	8	7	1		
2	D	1	Total	C	H	N	0	0
			16	8	7	1		

- Molecule 3 is SULFATE ION (three-letter code: SO4) (formula: O₄S).



Mol	Chain	Residues	Atoms			ZeroOcc	AltConf
3	A	1	Total	O	S	0	0
			5	4	1		
3	A	1	Total	O	S	0	0
			5	4	1		
3	A	1	Total	O	S	0	0
			5	4	1		
3	A	1	Total	O	S	0	0
			5	4	1		
3	B	1	Total	O	S	0	0
			5	4	1		
3	B	1	Total	O	S	0	0
			5	4	1		
3	B	1	Total	O	S	0	0
			5	4	1		
3	C	1	Total	O	S	0	0
			5	4	1		
3	C	1	Total	O	S	0	0
			5	4	1		

Continued on next page...

Continued from previous page...

Mol	Chain	Residues	Atoms			ZeroOcc	AltConf
3	C	1	Total	O	S	0	0
			5	4	1		
3	C	1	Total	O	S	0	0
			5	4	1		
3	C	1	Total	O	S	0	0
			5	4	1		
3	D	1	Total	O	S	0	0
			5	4	1		
3	D	1	Total	O	S	0	0
			5	4	1		
3	D	1	Total	O	S	0	0
			5	4	1		

- Molecule 4 is GLYCEROL (three-letter code: GOL) (formula: $C_3H_8O_3$).



Mol	Chain	Residues	Atoms				ZeroOcc	AltConf
4	B	1	Total	C	H	O	0	0
			14	3	8	3		
4	C	1	Total	C	H	O	0	0
			14	3	8	3		
4	D	1	Total	C	H	O	0	0
			14	3	8	3		

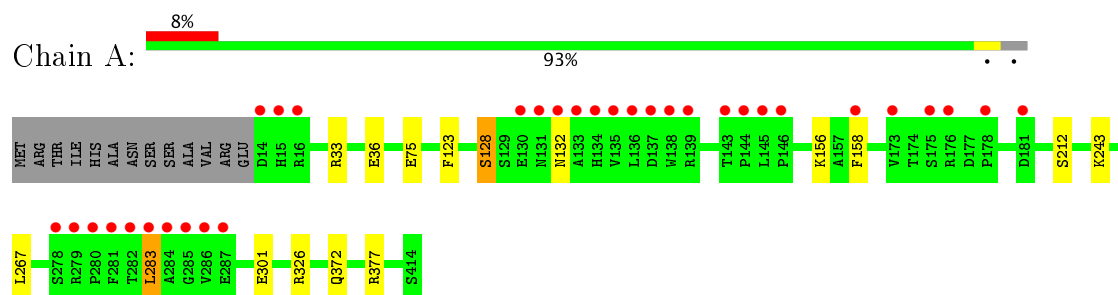
- Molecule 5 is water.

Mol	Chain	Residues	Atoms		ZeroOcc	AltConf
5	A	373	Total 373	O 373	0	0
5	B	421	Total 421	O 421	0	0
5	C	406	Total 406	O 406	0	0
5	D	457	Total 457	O 457	0	0

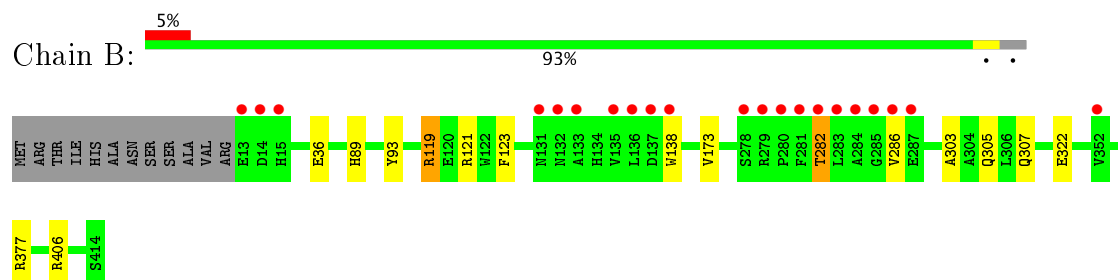
3 Residue-property plots

These plots are drawn for all protein, RNA and DNA chains in the entry. The first graphic for a chain summarises the proportions of the various outlier classes displayed in the second graphic. The second graphic shows the sequence view annotated by issues in geometry and electron density. Residues are color-coded according to the number of geometric quality criteria for which they contain at least one outlier: green = 0, yellow = 1, orange = 2 and red = 3 or more. A red dot above a residue indicates a poor fit to the electron density ($RSRZ > 2$). Stretches of 2 or more consecutive residues without any outlier are shown as a green connector. Residues present in the sample, but not in the model, are shown in grey.

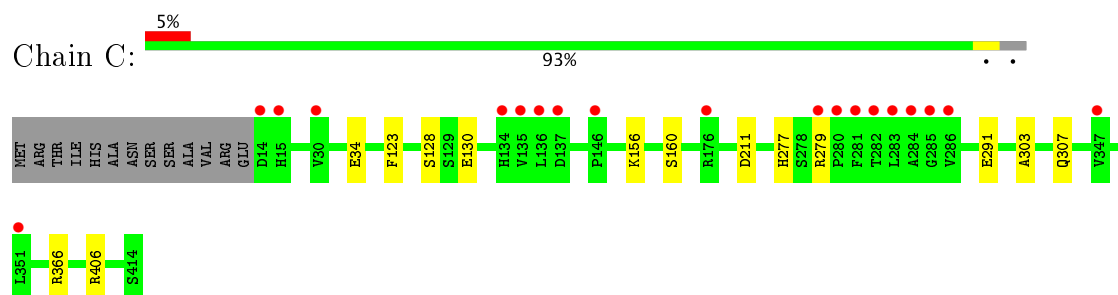
- Molecule 1: Thermophilic dibenzothiophene desulfurization enzyme C



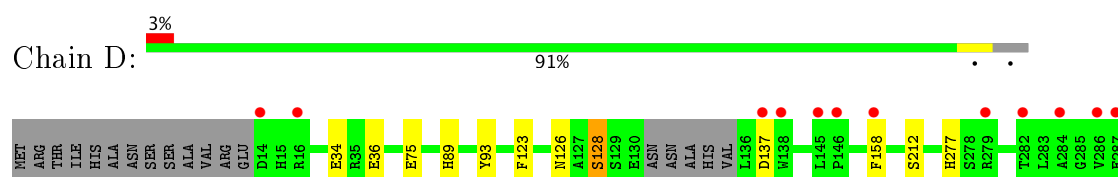
- Molecule 1: Thermophilic dibenzothiophene desulfurization enzyme C



- Molecule 1: Thermophilic dibenzothiophene desulfurization enzyme C



- Molecule 1: Thermophilic dibenzothiophene desulfurization enzyme C





4 Data and refinement statistics

Property	Value	Source
Space group	P 41 21 2	Depositor
Cell constants a, b, c, α , β , γ	100.83 Å 100.83 Å 424.49 Å 90.00° 90.00° 90.00°	Depositor
Resolution (Å)	47.49 – 1.58 47.49 – 1.58	Depositor EDS
% Data completeness (in resolution range)	88.6 (47.49-1.58) 84.0 (47.49-1.58)	Depositor EDS
R_{merge}	(Not available)	Depositor
R_{sym}	(Not available)	Depositor
$\langle I/\sigma(I) \rangle$ ¹	1.27 (at 1.58 Å)	Xtriage
Refinement program	PHENIX (1.10.1_2155)	Depositor
R, R_{free}	0.165 , 0.186 0.163 , 0.185	Depositor DCC
R_{free} test set	14146 reflections (5.00%)	DCC
Wilson B-factor (Å ²)	18.6	Xtriage
Anisotropy	0.006	Xtriage
Bulk solvent k_{sol} (e/Å ³), B_{sol} (Å ²)	0.42 , 56.1	EDS
L-test for twinning ²	$\langle L \rangle = 0.47$, $\langle L^2 \rangle = 0.30$	Xtriage
Estimated twinning fraction	No twinning to report.	Xtriage
F_o, F_c correlation	0.97	EDS
Total number of atoms	26633	wwPDB-VP
Average B, all atoms (Å ²)	25.0	wwPDB-VP

Xtriage's analysis on translational NCS is as follows: *The largest off-origin peak in the Patterson function is 3.78% of the height of the origin peak. No significant pseudotranslation is detected.*

¹Intensities estimated from amplitudes.

²Theoretical values of $\langle |L| \rangle$, $\langle L^2 \rangle$ for acentric reflections are 0.5, 0.333 respectively for untwinned datasets, and 0.375, 0.2 for perfectly twinned datasets.

5 Model quality [i](#)

5.1 Standard geometry [i](#)

Bond lengths and bond angles in the following residue types are not validated in this section: IND, GOL, SO4

The Z score for a bond length (or angle) is the number of standard deviations the observed value is removed from the expected value. A bond length (or angle) with $|Z| > 5$ is considered an outlier worth inspection. RMSZ is the root-mean-square of all Z scores of the bond lengths (or angles).

Mol	Chain	Bond lengths		Bond angles	
		RMSZ	$\# Z > 5$	RMSZ	$\# Z > 5$
1	A	0.36	0/3367	0.53	0/4576
1	B	0.36	0/3244	0.55	0/4417
1	C	0.36	0/3235	0.54	0/4403
1	D	0.36	0/3252	0.54	0/4420
All	All	0.36	0/13098	0.54	0/17816

There are no bond length outliers.

There are no bond angle outliers.

There are no chirality outliers.

There are no planarity outliers.

5.2 Too-close contacts [i](#)

In the following table, the Non-H and H(model) columns list the number of non-hydrogen atoms and hydrogen atoms in the chain respectively. The H(added) column lists the number of hydrogen atoms added and optimized by MolProbity. The Clashes column lists the number of clashes within the asymmetric unit, whereas Symm-Clashes lists symmetry related clashes.

Mol	Chain	Non-H	H(model)	H(added)	Clashes	Symm-Clashes
1	A	3212	3108	3035	11	0
1	B	3138	3012	2982	10	0
1	C	3133	3016	2993	10	0
1	D	3135	3036	2998	11	0
2	A	9	7	7	0	0
2	B	9	7	7	0	0
2	C	9	7	7	2	0
2	D	9	7	7	0	0
3	A	20	0	0	0	0

Continued on next page...

Continued from previous page...

Mol	Chain	Non-H	H(model)	H(added)	Clashes	Symm-Clashes
3	B	15	0	0	0	0
3	C	25	0	0	0	0
3	D	20	0	0	0	0
4	B	6	8	8	0	0
4	C	6	8	8	0	0
4	D	6	8	8	0	0
5	A	373	0	0	1	0
5	B	421	0	0	4	1
5	C	406	0	0	3	0
5	D	457	0	0	3	1
All	All	14409	12224	12060	39	1

The all-atom clashscore is defined as the number of clashes found per 1000 atoms (including hydrogen atoms). The all-atom clashscore for this structure is 2.

All (39) close contacts within the same asymmetric unit are listed below, sorted by their clash magnitude.

Atom-1	Atom-2	Interatomic distance (Å)	Clash overlap (Å)
1:A:75[B]:GLU:OE2	5:A:601:HOH:O	1.95	0.82
1:C:277:HIS:O	1:C:366:ARG:NH2	2.12	0.82
1:C:406:ARG:NH2	5:C:601:HOH:O	2.14	0.79
1:A:132[A]:ASN:OD1	1:B:282:THR:OG1	2.06	0.73
1:C:160:SER:OG	2:C:502:IND:H2	1.92	0.70
1:D:406:ARG:NE	5:D:607:HOH:O	2.33	0.61
1:D:137:ASP:OD1	5:D:601:HOH:O	2.18	0.54
1:B:406:ARG:NH2	1:C:291:GLU:OE1	2.37	0.53
1:C:303:ALA:O	1:C:307:GLN:HG2	2.09	0.52
1:A:36:GLU:HG2	1:A:377:ARG:HD3	1.93	0.50
1:B:119:ARG:NH2	5:B:603:HOH:O	2.26	0.49
1:D:36:GLU:HG2	1:D:377:ARG:HD3	1.94	0.48
1:C:130:GLU:OE1	2:C:502:IND:H3	2.13	0.48
1:C:211:ASP:OD2	5:C:602:HOH:O	2.20	0.47
1:C:34:GLU:HG2	5:C:825:HOH:O	2.15	0.47
1:B:36:GLU:HG2	1:B:377:ARG:HD3	1.98	0.46
1:B:89:HIS:CE1	1:B:93:TYR:CE1	3.05	0.46
1:C:128:SER:HB3	1:C:156:LYS:HG2	1.99	0.45
1:B:322:GLU:HG2	5:B:876:HOH:O	2.17	0.44
1:A:158:PHE:HA	1:A:212:SER:O	2.18	0.44
1:A:267:LEU:HG	1:D:402:PHE:CE2	2.53	0.44
1:B:121[A]:ARG:NE	5:B:616:HOH:O	2.50	0.44
1:D:75:GLU:OE2	5:D:602:HOH:O	2.21	0.44

Continued on next page...

Continued from previous page...

Atom-1	Atom-2	Interatomic distance (Å)	Clash overlap (Å)
1:B:303:ALA:O	1:B:307:GLN:HG2	2.18	0.43
1:B:138:TRP:CE3	1:B:173:VAL:HG13	2.53	0.43
1:D:277:HIS:O	1:D:366:ARG:NH2	2.51	0.42
1:A:128:SER:HB3	1:A:156:LYS:HG2	2.02	0.42
1:D:303:ALA:O	1:D:307:GLN:HG2	2.18	0.42
1:D:158:PHE:HA	1:D:212:SER:O	2.20	0.42
1:D:126:ASN:OD1	1:D:128:SER:HA	2.20	0.42
1:D:89:HIS:CE1	1:D:93[A]:TYR:CE1	3.08	0.41
1:C:279:ARG:HG3	1:C:366:ARG:NH2	2.35	0.41
1:D:34:GLU:CD	1:D:34:GLU:H	2.24	0.41
1:A:243:LYS:HE3	1:A:326:ARG:O	2.21	0.41
1:B:305:GLN:NE2	5:B:605:HOH:O	2.38	0.41
1:A:33[A]:ARG:NH1	1:A:372[A]:GLN:HG3	2.36	0.41
1:A:283:LEU:N	1:A:283:LEU:HD23	2.37	0.40

All (1) symmetry-related close contacts are listed below. The label for Atom-2 includes the symmetry operator and encoded unit-cell translations to be applied.

Atom-1	Atom-2	Interatomic distance (Å)	Clash overlap (Å)
5:B:951:HOH:O	5:D:1005:HOH:O[1_455]	2.19	0.01

5.3 Torsion angles [i](#)

5.3.1 Protein backbone [i](#)

In the following table, the Percentiles column shows the percent Ramachandran outliers of the chain as a percentile score with respect to all X-ray entries followed by that with respect to entries of similar resolution.

The Analysed column shows the number of residues for which the backbone conformation was analysed, and the total number of residues.

Mol	Chain	Analysed	Favoured	Allowed	Outliers	Percentiles	
1	A	419/414 (101%)	412 (98%)	7 (2%)	0	100	100
1	B	410/414 (99%)	405 (99%)	5 (1%)	0	100	100
1	C	406/414 (98%)	402 (99%)	4 (1%)	0	100	100
1	D	403/414 (97%)	398 (99%)	5 (1%)	0	100	100
All	All	1638/1656 (99%)	1617 (99%)	21 (1%)	0	100	100

There are no Ramachandran outliers to report.

5.3.2 Protein sidechains ⓘ

In the following table, the Percentiles column shows the percent sidechain outliers of the chain as a percentile score with respect to all X-ray entries followed by that with respect to entries of similar resolution.

The Analysed column shows the number of residues for which the sidechain conformation was analysed, and the total number of residues.

Mol	Chain	Analysed	Rotameric	Outliers	Percentiles	
1	A	332/331 (100%)	328 (99%)	4 (1%)	75	56
1	B	316/331 (96%)	312 (99%)	4 (1%)	73	53
1	C	318/331 (96%)	317 (100%)	1 (0%)	94	88
1	D	321/331 (97%)	319 (99%)	2 (1%)	89	79
All	All	1287/1324 (97%)	1276 (99%)	11 (1%)	82	68

All (11) residues with a non-rotameric sidechain are listed below:

Mol	Chain	Res	Type
1	A	123	PHE
1	A	128	SER
1	A	283	LEU
1	A	301	GLU
1	B	119	ARG
1	B	123	PHE
1	B	282	THR
1	B	286	VAL
1	C	123	PHE
1	D	123	PHE
1	D	128	SER

Some sidechains can be flipped to improve hydrogen bonding and reduce clashes. All (1) such sidechains are listed below:

Mol	Chain	Res	Type
1	D	89	HIS

5.3.3 RNA ⓘ

There are no RNA molecules in this entry.

5.4 Non-standard residues in protein, DNA, RNA chains [i](#)

There are no non-standard protein/DNA/RNA residues in this entry.

5.5 Carbohydrates [i](#)

There are no carbohydrates in this entry.

5.6 Ligand geometry [i](#)

23 ligands are modelled in this entry.

In the following table, the Counts columns list the number of bonds (or angles) for which Mogul statistics could be retrieved, the number of bonds (or angles) that are observed in the model and the number of bonds (or angles) that are defined in the Chemical Component Dictionary. The Link column lists molecule types, if any, to which the group is linked. The Z score for a bond length (or angle) is the number of standard deviations the observed value is removed from the expected value. A bond length (or angle) with $|Z| > 2$ is considered an outlier worth inspection. RMSZ is the root-mean-square of all Z scores of the bond lengths (or angles).

Mol	Type	Chain	Res	Link	Bond lengths			Bond angles		
					Counts	RMSZ	$\# Z > 2$	Counts	RMSZ	$\# Z > 2$
2	IND	A	501	-	10,10,10	1.53	1 (10%)	12,13,13	1.87	2 (16%)
3	SO4	A	502	-	4,4,4	0.15	0	6,6,6	0.12	0
3	SO4	A	503	-	4,4,4	0.13	0	6,6,6	0.25	0
3	SO4	A	504	-	4,4,4	0.16	0	6,6,6	0.14	0
3	SO4	A	505	-	4,4,4	0.15	0	6,6,6	0.19	0
2	IND	B	501	-	10,10,10	1.52	1 (10%)	12,13,13	1.87	2 (16%)
3	SO4	B	502	-	4,4,4	0.17	0	6,6,6	0.27	0
3	SO4	B	503	-	4,4,4	0.13	0	6,6,6	0.19	0
4	GOL	B	504	-	5,5,5	0.50	0	5,5,5	0.31	0
3	SO4	B	505	-	4,4,4	0.16	0	6,6,6	0.16	0
3	SO4	C	501	-	4,4,4	0.16	0	6,6,6	0.11	0
2	IND	C	502	-	10,10,10	1.55	2 (20%)	12,13,13	1.81	2 (16%)
3	SO4	C	503	-	4,4,4	0.16	0	6,6,6	0.28	0
3	SO4	C	504	-	4,4,4	0.14	0	6,6,6	0.25	0
3	SO4	C	505	-	4,4,4	0.15	0	6,6,6	0.19	0
4	GOL	C	506	-	5,5,5	0.52	0	5,5,5	0.18	0
3	SO4	C	507	-	4,4,4	0.26	0	6,6,6	0.16	0
2	IND	D	501	-	10,10,10	1.56	1 (10%)	12,13,13	1.83	2 (16%)
3	SO4	D	502	-	4,4,4	0.14	0	6,6,6	0.30	0
4	GOL	D	503	-	5,5,5	0.39	0	5,5,5	0.23	0
3	SO4	D	504	-	4,4,4	0.14	0	6,6,6	0.07	0

Mol	Type	Chain	Res	Link	Bond lengths			Bond angles		
					Counts	RMSZ	# Z > 2	Counts	RMSZ	# Z > 2
3	SO4	D	505	-	4,4,4	0.19	0	6,6,6	0.11	0
3	SO4	D	506	-	4,4,4	0.15	0	6,6,6	0.12	0

In the following table, the Chirals column lists the number of chiral outliers, the number of chiral centers analysed, the number of these observed in the model and the number defined in the Chemical Component Dictionary. Similar counts are reported in the Torsion and Rings columns. '-' means no outliers of that kind were identified.

Mol	Type	Chain	Res	Link	Chirals	Torsions	Rings
2	IND	A	501	-	-	0/0/0/0	0/2/2/2
3	SO4	A	502	-	-	0/0/0/0	0/0/0/0
3	SO4	A	503	-	-	0/0/0/0	0/0/0/0
3	SO4	A	504	-	-	0/0/0/0	0/0/0/0
3	SO4	A	505	-	-	0/0/0/0	0/0/0/0
2	IND	B	501	-	-	0/0/0/0	0/2/2/2
3	SO4	B	502	-	-	0/0/0/0	0/0/0/0
3	SO4	B	503	-	-	0/0/0/0	0/0/0/0
4	GOL	B	504	-	-	0/4/4/4	0/0/0/0
3	SO4	B	505	-	-	0/0/0/0	0/0/0/0
3	SO4	C	501	-	-	0/0/0/0	0/0/0/0
2	IND	C	502	-	-	0/0/0/0	0/2/2/2
3	SO4	C	503	-	-	0/0/0/0	0/0/0/0
3	SO4	C	504	-	-	0/0/0/0	0/0/0/0
3	SO4	C	505	-	-	0/0/0/0	0/0/0/0
4	GOL	C	506	-	-	0/4/4/4	0/0/0/0
3	SO4	C	507	-	-	0/0/0/0	0/0/0/0
2	IND	D	501	-	-	0/0/0/0	0/2/2/2
3	SO4	D	502	-	-	0/0/0/0	0/0/0/0
4	GOL	D	503	-	-	0/4/4/4	0/0/0/0
3	SO4	D	504	-	-	0/0/0/0	0/0/0/0
3	SO4	D	505	-	-	0/0/0/0	0/0/0/0
3	SO4	D	506	-	-	0/0/0/0	0/0/0/0

All (5) bond length outliers are listed below:

Mol	Chain	Res	Type	Atoms	Z	Observed(Å)	Ideal(Å)
2	A	501	IND	C2-C3	-2.43	1.28	1.36
2	D	501	IND	C2-C3	-2.41	1.28	1.36
2	B	501	IND	C2-C3	-2.35	1.28	1.36
2	C	502	IND	C2-C3	-2.32	1.28	1.36
2	C	502	IND	C3-C9	-2.01	1.30	1.45

All (8) bond angle outliers are listed below:

Mol	Chain	Res	Type	Atoms	Z	Observed(°)	Ideal(°)
2	B	501	IND	C3-C2-N1	-3.29	102.61	108.17
2	A	501	IND	C3-C2-N1	-3.18	102.78	108.17
2	D	501	IND	C3-C2-N1	-3.07	102.98	108.17
2	C	502	IND	C3-C2-N1	-2.83	103.38	108.17
2	D	501	IND	C2-C3-C9	4.92	120.25	105.04
2	C	502	IND	C2-C3-C9	4.92	120.27	105.04
2	B	501	IND	C2-C3-C9	4.95	120.34	105.04
2	A	501	IND	C2-C3-C9	4.99	120.48	105.04

There are no chirality outliers.

There are no torsion outliers.

There are no ring outliers.

1 monomer is involved in 2 short contacts:

Mol	Chain	Res	Type	Clashes	Symm-Clashes
2	C	502	IND	2	0

5.7 Other polymers [i](#)

There are no such residues in this entry.

5.8 Polymer linkage issues [i](#)

There are no chain breaks in this entry.

6 Fit of model and data ⓘ

6.1 Protein, DNA and RNA chains ⓘ

In the following table, the column labelled ‘#RSRZ> 2’ contains the number (and percentage) of RSRZ outliers, followed by percent RSRZ outliers for the chain as percentile scores relative to all X-ray entries and entries of similar resolution. The OWAB column contains the minimum, median, 95th percentile and maximum values of the occupancy-weighted average B-factor per residue. The column labelled ‘Q< 0.9’ lists the number of (and percentage) of residues with an average occupancy less than 0.9.

Mol	Chain	Analysed	<RSRZ>	#RSRZ>2		OWAB(Å ²)	Q<0.9
1	A	401/414 (96%)	0.34	33 (8%)	12 12	12, 20, 50, 72	0
1	B	402/414 (97%)	0.18	21 (5%)	28 28	11, 19, 42, 87	0
1	C	401/414 (96%)	0.20	19 (4%)	32 33	11, 21, 38, 64	0
1	D	396/414 (95%)	-0.01	13 (3%)	47 48	12, 19, 37, 71	0
All	All	1600/1656 (96%)	0.18	86 (5%)	26 27	11, 20, 42, 87	0

All (86) RSRZ outliers are listed below:

Mol	Chain	Res	Type	RSRZ
1	B	282	THR	9.0
1	A	146	PRO	7.6
1	A	283	LEU	7.6
1	A	284	ALA	7.5
1	B	283	LEU	7.4
1	B	284	ALA	6.6
1	B	136	LEU	6.3
1	A	139	ARG	6.3
1	A	137	ASP	6.2
1	A	135	VAL	6.2
1	B	286	VAL	6.2
1	A	286	VAL	6.1
1	A	136	LEU	5.9
1	A	282	THR	5.7
1	A	134	HIS	5.5
1	D	137	ASP	5.4
1	B	278	SER	5.2
1	B	281	PHE	5.2
1	B	285	GLY	5.1
1	D	138	TRP	5.1
1	C	136	LEU	5.1

Continued on next page...

Continued from previous page...

Mol	Chain	Res	Type	RSRZ
1	C	14	ASP	4.8
1	D	286	VAL	4.8
1	D	284	ALA	4.7
1	C	286	VAL	4.7
1	D	14	ASP	4.6
1	A	138	TRP	4.5
1	A	145	LEU	4.4
1	B	137	ASP	4.3
1	C	279	ARG	4.2
1	A	133[A]	ALA	4.2
1	A	178	PRO	4.1
1	A	132[A]	ASN	4.1
1	D	287	GLU	4.1
1	D	146	PRO	4.0
1	A	281	PHE	3.8
1	A	176	ARG	3.8
1	C	284	ALA	3.7
1	B	280	PRO	3.7
1	B	135	VAL	3.6
1	A	285	GLY	3.6
1	A	131[A]	ASN	3.5
1	B	132	ASN	3.5
1	B	131	ASN	3.4
1	C	282	THR	3.3
1	A	287	GLU	3.3
1	A	173[A]	VAL	3.2
1	A	16	ARG	3.2
1	A	279	ARG	3.2
1	B	14	ASP	3.1
1	B	13	GLU	3.1
1	C	135	VAL	3.0
1	B	138	TRP	3.0
1	B	279	ARG	2.9
1	C	280	PRO	2.8
1	D	288	LYS	2.8
1	C	176	ARG	2.8
1	C	281	PHE	2.8
1	D	145	LEU	2.7
1	A	144	PRO	2.7
1	B	133	ALA	2.7
1	A	14	ASP	2.7
1	A	158	PHE	2.6

Continued on next page...

Continued from previous page...

Mol	Chain	Res	Type	RSRZ
1	A	280	PRO	2.6
1	B	352	VAL	2.6
1	D	282	THR	2.6
1	A	175	SER	2.6
1	C	285	GLY	2.5
1	A	278	SER	2.5
1	A	15	HIS	2.5
1	C	30	VAL	2.5
1	C	351	LEU	2.5
1	C	15	HIS	2.5
1	A	181	ASP	2.4
1	D	16	ARG	2.4
1	A	143	THR	2.4
1	D	279	ARG	2.3
1	B	15	HIS	2.3
1	C	146	PRO	2.3
1	C	134	HIS	2.3
1	C	347	VAL	2.2
1	D	158	PHE	2.1
1	C	283	LEU	2.1
1	B	287	GLU	2.1
1	A	130	GLU	2.1
1	C	137	ASP	2.0

6.2 Non-standard residues in protein, DNA, RNA chains [i](#)

There are no non-standard protein/DNA/RNA residues in this entry.

6.3 Carbohydrates [i](#)

There are no carbohydrates in this entry.

6.4 Ligands [i](#)

In the following table, the Atoms column lists the number of modelled atoms in the group and the number defined in the chemical component dictionary. LLDF column lists the quality of electron density of the group with respect to its neighbouring residues in protein, DNA or RNA chains. The B-factors column lists the minimum, median, 95th percentile and maximum values of B factors of atoms in the group. The column labelled 'Q< 0.9' lists the number of atoms with occupancy less than 0.9.

Mol	Type	Chain	Res	Atoms	RSCC	RSR	LLDF	B-factors(\AA^2)	Q<0.9
4	GOL	C	506	6/6	0.85	0.11	4.53	25,30,36,41	0
2	IND	C	502	9/9	0.83	0.12	1.84	27,34,44,53	0
2	IND	A	501	9/9	0.75	0.18	1.81	32,49,57,63	0
3	SO4	A	505	5/5	0.91	0.13	1.57	34,45,64,73	0
3	SO4	D	506	5/5	0.94	0.20	1.56	37,57,71,72	0
3	SO4	C	507	5/5	0.83	0.25	1.36	34,45,69,71	0
2	IND	B	501	9/9	0.86	0.10	0.87	26,34,42,50	0
2	IND	D	501	9/9	0.79	0.12	0.68	32,38,48,52	0
3	SO4	D	502	5/5	0.98	0.12	0.60	29,31,39,39	0
3	SO4	A	504	5/5	0.94	0.15	0.33	36,58,61,72	0
4	GOL	B	504	6/6	0.94	0.08	0.17	19,29,35,35	0
4	GOL	D	503	6/6	0.96	0.07	0.06	20,24,26,27	0
3	SO4	A	502	5/5	0.98	0.07	-1.51	35,37,38,47	0
3	SO4	C	504	5/5	0.97	0.11	-	27,32,39,53	0
3	SO4	A	503	5/5	0.98	0.07	-	35,40,43,46	0
3	SO4	C	505	5/5	0.92	0.22	-	41,41,56,57	0
3	SO4	C	503	5/5	0.99	0.10	-	31,32,34,49	0
3	SO4	D	505	5/5	0.94	0.24	-	43,48,71,78	0
3	SO4	D	504	5/5	0.94	0.23	-	41,45,61,72	0
3	SO4	C	501	5/5	0.90	0.29	-	52,54,97,106	0
3	SO4	B	502	5/5	0.95	0.18	-	35,35,44,49	0
3	SO4	B	505	5/5	0.94	0.23	-	37,42,63,79	0
3	SO4	B	503	5/5	0.93	0.27	-	49,55,61,80	0

6.5 Other polymers [i](#)

There are no such residues in this entry.