



# Full wwPDB X-ray Structure Validation Report ⓘ

Dec 13, 2017 – 11:18 PM EST

PDB ID : 2XFN  
Title : human monoamine oxidase B in complex with 2-(2-benzofuranyl)-2-imidazole  
Authors : Bonivento, D.; Milczek, E.M.; McDonald, G.R.; Binda, C.; Holt, A.; Edmondson, D.E.; Mattevi, A.  
Deposited on : unknown  
Resolution : 1.60 Å(reported)

This is a Full wwPDB X-ray Structure Validation Report for a publicly released PDB entry.

We welcome your comments at [validation@mail.wwpdb.org](mailto:validation@mail.wwpdb.org)

A user guide is available at

<http://wwpdb.org/validation/2016/XrayValidationReportHelp>

with specific help available everywhere you see the ⓘ symbol.

---

The following versions of software and data (see [references ⓘ](#)) were used in the production of this report:

MolProbity : 4.02b-467  
Mogul : 1.7.2 (RC1), CSD as538be (2017)  
Xtriage (Phenix) : 1.9-1692  
EDS : rb-20030345  
Percentile statistics : 20161228.v01 (using entries in the PDB archive December 28th 2016)  
Refmac : 5.8.0135  
CCP4 : 6.5.0  
Ideal geometry (proteins) : Engh & Huber (2001)  
Ideal geometry (DNA, RNA) : Parkinson et al. (1996)  
Validation Pipeline (wwPDB-VP) : rb-20030345

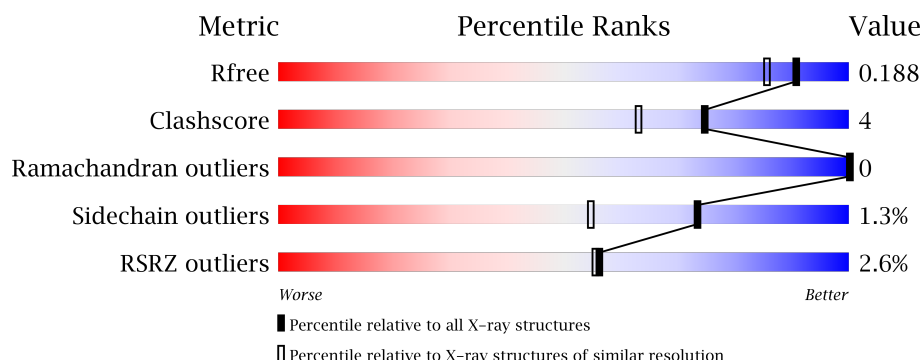
# 1 Overall quality at a glance

The following experimental techniques were used to determine the structure:

## *X-RAY DIFFRACTION*

The reported resolution of this entry is 1.60 Å.

Percentile scores (ranging between 0-100) for global validation metrics of the entry are shown in the following graphic. The table shows the number of entries on which the scores are based.



Metric	Whole archive (#Entries)	Similar resolution (#Entries, resolution range(Å))
$R_{free}$	100719	2696 (1.60-1.60)
Clashscore	112137	2967 (1.60-1.60)
Ramachandran outliers	110173	2887 (1.60-1.60)
Sidechain outliers	110143	2886 (1.60-1.60)
RSRZ outliers	101464	2714 (1.60-1.60)

The table below summarises the geometric issues observed across the polymeric chains and their fit to the electron density. The red, orange, yellow and green segments on the lower bar indicate the fraction of residues that contain outliers for  $\geq 3$ , 2, 1 and 0 types of geometric quality criteria. A grey segment represents the fraction of residues that are not modelled. The numeric value for each fraction is indicated below the corresponding segment, with a dot representing fractions  $\leq 5\%$ . The upper red bar (where present) indicates the fraction of residues that have poor fit to the electron density. The numeric value is given above the bar.

Mol	Chain	Length	Quality of chain
1	A	520	<div> <div>2%</div> <div> <div></div> <div>92%</div> <div>7%</div> <div>5%</div> </div> </div>
1	B	520	<div> <div>3%</div> <div> <div></div> <div>87%</div> <div>7%</div> <div>5%</div> </div> </div>

The following table lists non-polymeric compounds, carbohydrate monomers and non-standard residues in protein, DNA, RNA chains that are outliers for geometric or electron-density-fit criteria:

Mol	Type	Chain	Res	Chirality	Geometry	Clashes	Electron density
3	XCG	A	1501	-	-	X	-
4	C15	A	1502	-	-	-	X

## 2 Entry composition [i](#)

There are 5 unique types of molecules in this entry. The entry contains 8948 atoms, of which 0 are hydrogens and 0 are deuteriums.

In the tables below, the ZeroOcc column contains the number of atoms modelled with zero occupancy, the AltConf column contains the number of residues with at least one atom in alternate conformation and the Trace column contains the number of residues modelled with at most 2 atoms.

- Molecule 1 is a protein called AMINE OXIDASE [FLAVIN-CONTAINING] B.

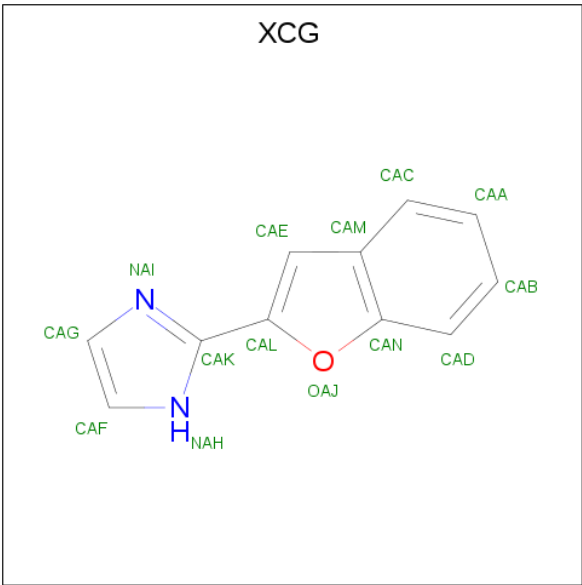
Mol	Chain	Residues	Atoms					ZeroOcc	AltConf	Trace
1	A	499	Total	C	N	O	S	0	7	0
			4002	2564	681	731	26			
1	B	494	Total	C	N	O	S	0	7	0
			3973	2545	676	726	26			

- Molecule 2 is FLAVIN-ADENINE DINUCLEOTIDE (three-letter code: FAD) (formula: C<sub>27</sub>H<sub>33</sub>N<sub>9</sub>O<sub>15</sub>P<sub>2</sub>).



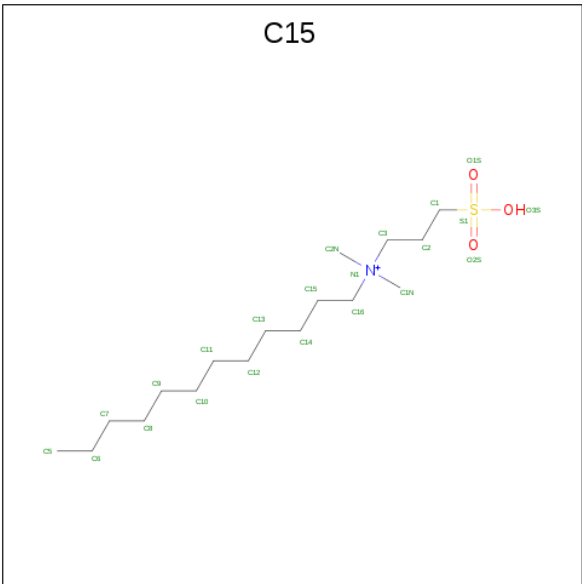
Mol	Chain	Residues	Atoms					ZeroOcc	AltConf
2	A	1	Total	C	N	O	P	0	0
			53	27	9	15	2		
2	B	1	Total	C	N	O	P	0	0
			53	27	9	15	2		

- Molecule 3 is 2-(2-BENZOFURANYL)-2-IMIDAZOLINE (three-letter code: XCG) (formula: C<sub>11</sub>H<sub>8</sub>N<sub>2</sub>O).



Mol	Chain	Residues	Atoms				ZeroOcc	AltConf
3	A	1	Total	C	N	O	0	0
			14	11	2	1		
3	B	1	Total	C	N	O	0	0
			14	11	2	1		

- Molecule 4 is N-DODECYL-N,N-DIMETHYL-3-AMMONIO-1-PROPANESULFONATE (three-letter code: C15) (formula: C<sub>17</sub>H<sub>38</sub>NO<sub>3</sub>S).



Mol	Chain	Residues	Atoms					ZeroOcc	AltConf
4	A	1	Total	C	N	O	S	0	0
			22	17	1	3	1		

*Continued on next page...*

*Continued from previous page...*

Mol	Chain	Residues	Atoms					ZeroOcc	AltConf
4	B	1	Total	C	N	O	S	0	0
			22	17	1	3	1		

- Molecule 5 is water.

Mol	Chain	Residues	Atoms		ZeroOcc	AltConf
5	A	374	Total	O	0	0
			374	374		
5	B	421	Total	O	0	0
			421	421		



- Molecule 1: AMINE OXIDASE [FLAVIN-CONTAINING] B



## 4 Data and refinement statistics

Property	Value	Source
Space group	C 2 2 2	Depositor
Cell constants a, b, c, $\alpha$ , $\beta$ , $\gamma$	131.54Å 222.44Å 86.36Å 90.00° 90.00° 90.00°	Depositor
Resolution (Å)	68.21 – 1.60 56.61 – 1.60	Depositor EDS
% Data completeness (in resolution range)	98.8 (68.21-1.60) 98.8 (56.61-1.60)	Depositor EDS
$R_{merge}$	0.08	Depositor
$R_{sym}$	(Not available)	Depositor
$\langle I/\sigma(I) \rangle$ <sup>1</sup>	3.15 (at 1.60Å)	Xtriage
Refinement program	REFMAC 5.5.0109	Depositor
R, $R_{free}$	0.166 , 0.190 0.164 , 0.188	Depositor DCC
$R_{free}$ test set	4257 reflections (2.66%)	DCC
Wilson B-factor (Å <sup>2</sup> )	13.5	Xtriage
Anisotropy	0.058	Xtriage
Bulk solvent $k_{sol}$ (e/Å <sup>3</sup> ), $B_{sol}$ (Å <sup>2</sup> )	0.38 , 53.0	EDS
L-test for twinning <sup>2</sup>	$\langle  L  \rangle = 0.49$ , $\langle L^2 \rangle = 0.32$	Xtriage
Estimated twinning fraction	0.010 for 1/2*h-1/2*k,-3/2*h-1/2*k,-l 0.012 for 1/2*h+1/2*k,3/2*h-1/2*k,-l	Xtriage
$F_o, F_c$ correlation	0.96	EDS
Total number of atoms	8948	wwPDB-VP
Average B, all atoms (Å <sup>2</sup> )	15.0	wwPDB-VP

Xtriage's analysis on translational NCS is as follows: *The largest off-origin peak in the Patterson function is 3.50% of the height of the origin peak. No significant pseudotranslation is detected.*

<sup>1</sup>Intensities estimated from amplitudes.

<sup>2</sup>Theoretical values of  $\langle |L| \rangle$ ,  $\langle L^2 \rangle$  for acentric reflections are 0.5, 0.333 respectively for untwinned datasets, and 0.375, 0.2 for perfectly twinned datasets.



## 5 Model quality ⓘ

### 5.1 Standard geometry ⓘ

Bond lengths and bond angles in the following residue types are not validated in this section: C15, FAD, XCG

The Z score for a bond length (or angle) is the number of standard deviations the observed value is removed from the expected value. A bond length (or angle) with  $|Z| > 5$  is considered an outlier worth inspection. RMSZ is the root-mean-square of all Z scores of the bond lengths (or angles).

Mol	Chain	Bond lengths		Bond angles	
		RMSZ	$\# Z  > 5$	RMSZ	$\# Z  > 5$
1	A	0.83	0/4120	0.80	1/5591 (0.0%)
1	B	0.87	1/4092 (0.0%)	0.85	4/5552 (0.1%)
All	All	0.85	1/8212 (0.0%)	0.82	5/11143 (0.0%)

All (1) bond length outliers are listed below:

Mol	Chain	Res	Type	Atoms	Z	Observed(Å)	Ideal(Å)
1	B	280	MET	CB-CG	6.56	1.72	1.51

All (5) bond angle outliers are listed below:

Mol	Chain	Res	Type	Atoms	Z	Observed(°)	Ideal(°)
1	B	70	ARG	NE-CZ-NH2	-7.17	116.72	120.30
1	B	350	ARG	NE-CZ-NH1	6.42	123.51	120.30
1	B	222	MET	CG-SD-CE	6.04	109.86	100.20
1	A	288	ARG	NE-CZ-NH2	-5.19	117.71	120.30
1	B	445	ARG	NE-CZ-NH1	5.14	122.87	120.30

There are no chirality outliers.

There are no planarity outliers.

### 5.2 Too-close contacts ⓘ

In the following table, the Non-H and H(model) columns list the number of non-hydrogen atoms and hydrogen atoms in the chain respectively. The H(added) column lists the number of hydrogen atoms added and optimized by MolProbity. The Clashes column lists the number of clashes within the asymmetric unit, whereas Symm-Clashes lists symmetry related clashes.

Mol	Chain	Non-H	H(model)	H(added)	Clashes	Symm-Clashes
1	A	4002	0	4029	31	0
1	B	3973	0	3985	37	0
2	A	53	0	29	1	0
2	B	53	0	29	0	0
3	A	14	0	8	6	0
3	B	14	0	8	5	0
4	A	22	0	38	0	0
4	B	22	0	38	1	0
5	A	374	0	0	5	0
5	B	421	0	0	5	0
All	All	8948	0	8164	61	0

The all-atom clashscore is defined as the number of clashes found per 1000 atoms (including hydrogen atoms). The all-atom clashscore for this structure is 4.

All (61) close contacts within the same asymmetric unit are listed below, sorted by their clash magnitude.

Atom-1	Atom-2	Interatomic distance (Å)	Clash overlap (Å)
1:A:167[A]:LEU:HD21	5:A:2245:HOH:O	0.89	1.05
1:B:167:LEU:HD22	3:B:1501:XCG:HAB	1.58	0.85
1:B:117:ASN:HD22	1:B:120:ARG:HH21	1.25	0.81
1:A:117:ASN:HD22	1:A:120:ARG:HH21	1.36	0.74
1:A:280:MET:CE	5:B:2332:HOH:O	2.37	0.72
1:A:168:PHE:HE1	1:A:199:ILE:CG2	2.02	0.71
1:B:167:LEU:CD2	3:B:1501:XCG:HAB	2.20	0.70
1:B:167:LEU:HD22	3:B:1501:XCG:CAB	2.22	0.69
1:A:167[A]:LEU:HD22	3:A:1501:XCG:HAB	1.76	0.66
1:B:254[B]:MET:HA	1:B:254[B]:MET:HE3	1.79	0.65
1:B:251:ASN:H	1:B:251:ASN:HD22	1.45	0.63
1:B:309:LYS:HG3	5:B:2262:HOH:O	2.00	0.61
1:B:168:PHE:HE1	1:B:199:ILE:CG2	2.14	0.60
1:B:102:PRO:O	3:B:1501:XCG:NAH	2.32	0.59
1:A:167[A]:LEU:CD2	3:A:1501:XCG:HAB	2.32	0.58
1:A:280:MET:HE1	1:B:353:ALA:HB1	1.85	0.57
1:B:410:TYR:O	1:B:413:VAL:HG13	2.05	0.56
1:A:103:PHE:CE2	1:A:199:ILE:HD13	2.42	0.55
1:A:168:PHE:CE1	1:A:199:ILE:CG2	2.88	0.53
1:A:280:MET:HE1	1:B:387:ASN:ND2	2.24	0.53
1:B:321:GLU:CD	1:B:321:GLU:H	2.11	0.52
1:B:117:ASN:HD22	1:B:120:ARG:NH2	2.03	0.52
1:A:410:TYR:OH	1:B:350:ARG:HD3	2.10	0.52
1:A:168:PHE:HE1	1:A:199:ILE:HG22	1.76	0.51

*Continued on next page...*

*Continued from previous page...*

Atom-1	Atom-2	Interatomic distance (Å)	Clash overlap (Å)
1:A:387:ASN:ND2	1:B:280:MET:HE1	2.25	0.50
1:B:495:LEU:O	1:B:496:ILE:HD12	2.12	0.50
1:A:167[A]:LEU:HD22	3:A:1501:XCG:CAB	2.41	0.49
1:A:163:GLN:NE2	5:A:2151:HOH:O	2.46	0.48
1:B:318:ASP:OD1	1:B:319:GLY:N	2.47	0.48
1:A:98:PRO:CG	5:A:2233:HOH:O	2.63	0.47
1:A:168:PHE:CE1	1:A:199:ILE:HG22	2.50	0.46
3:A:1501:XCG:HAF	5:A:2079:HOH:O	2.16	0.46
1:B:168:PHE:CE1	1:B:199:ILE:CG2	2.97	0.46
1:B:17:MET:CE	1:B:39:VAL:HG11	2.46	0.46
1:A:195:THR:O	1:A:199:ILE:HG23	2.16	0.45
1:B:103[A]:PHE:CE2	1:B:119:TRP:CZ2	3.04	0.45
1:A:199:ILE:HD12	3:A:1501:XCG:HAE	1.98	0.45
1:A:280:MET:HE1	1:B:387:ASN:HD21	1.81	0.44
3:B:1501:XCG:HAF	5:B:2097:HOH:O	2.16	0.44
1:A:244:ASN:ND2	1:A:256:GLU:OE1	2.46	0.44
1:B:254[B]:MET:HE2	1:B:254[B]:MET:HB3	1.88	0.43
1:B:146:MET:HE1	1:B:154:LYS:HD2	2.01	0.43
1:A:321:GLU:HG3	5:A:2242:HOH:O	2.18	0.43
1:B:280:MET:HE3	1:B:280:MET:HB3	1.54	0.43
1:A:280:MET:HE3	5:B:2332:HOH:O	2.11	0.42
1:B:117:ASN:ND2	1:B:120:ARG:HH21	2.05	0.42
1:A:387:ASN:ND2	1:B:280:MET:CE	2.83	0.42
1:A:280:MET:CE	1:B:387:ASN:ND2	2.83	0.42
1:B:103[A]:PHE:HE2	1:B:119:TRP:CH2	2.38	0.41
1:A:102:PRO:O	3:A:1501:XCG:NAH	2.49	0.41
1:A:58:GLY:HA2	2:A:1500:FAD:C4X	2.50	0.41
1:A:280:MET:HE3	1:A:280:MET:HB3	1.74	0.41
1:B:459:GLU:HG3	1:B:459:GLU:O	2.19	0.41
1:B:111:THR:HG22	1:B:115:HIS:CD2	2.55	0.41
1:B:163:GLN:HB3	1:B:318:ASP:OD2	2.21	0.41
4:B:1502:C15:HCN3	4:B:1502:C15:H2C1	1.80	0.41
1:A:270[B]:MET:SD	1:B:270[B]:MET:SD	3.20	0.40
1:B:60:TYR:HB3	1:B:206:GLN:HA	2.03	0.40
1:A:280:MET:CE	1:B:387:ASN:HD21	2.35	0.40
1:B:105:PRO:HD2	5:B:2112:HOH:O	2.20	0.40
1:A:280:MET:HG3	1:B:389:CYS:HB3	2.03	0.40

There are no symmetry-related clashes.

## 5.3 Torsion angles

### 5.3.1 Protein backbone

In the following table, the Percentiles column shows the percent Ramachandran outliers of the chain as a percentile score with respect to all X-ray entries followed by that with respect to entries of similar resolution.

The Analysed column shows the number of residues for which the backbone conformation was analysed, and the total number of residues.

Mol	Chain	Analysed	Favoured	Allowed	Outliers	Percentiles	
1	A	504/520 (97%)	491 (97%)	13 (3%)	0	100	100
1	B	499/520 (96%)	480 (96%)	19 (4%)	0	100	100
All	All	1003/1040 (96%)	971 (97%)	32 (3%)	0	100	100

There are no Ramachandran outliers to report.

### 5.3.2 Protein sidechains

In the following table, the Percentiles column shows the percent sidechain outliers of the chain as a percentile score with respect to all X-ray entries followed by that with respect to entries of similar resolution.

The Analysed column shows the number of residues for which the sidechain conformation was analysed, and the total number of residues.

Mol	Chain	Analysed	Rotameric	Outliers	Percentiles	
1	A	435/444 (98%)	431 (99%)	4 (1%)	82	69
1	B	431/444 (97%)	424 (98%)	7 (2%)	68	45
All	All	866/888 (98%)	855 (99%)	11 (1%)	73	55

All (11) residues with a non-rotameric sidechain are listed below:

Mol	Chain	Res	Type
1	A	280	MET
1	A	350	ARG
1	A	397	CYS
1	A	495	LEU
1	B	92	VAL
1	B	190	LYS
1	B	251	ASN
1	B	280	MET

*Continued on next page...*

*Continued from previous page...*

Mol	Chain	Res	Type
1	B	397	CYS
1	B	482	LEU
1	B	496	ILE

Some sidechains can be flipped to improve hydrogen bonding and reduce clashes. All (7) such sidechains are listed below:

Mol	Chain	Res	Type
1	A	117	ASN
1	A	163	GLN
1	A	452	HIS
1	A	475	GLN
1	B	117	ASN
1	B	251	ASN
1	B	475	GLN

### 5.3.3 RNA [i](#)

There are no RNA molecules in this entry.

## 5.4 Non-standard residues in protein, DNA, RNA chains [i](#)

There are no non-standard protein/DNA/RNA residues in this entry.

## 5.5 Carbohydrates [i](#)

There are no carbohydrates in this entry.

## 5.6 Ligand geometry [i](#)

6 ligands are modelled in this entry.

In the following table, the Counts columns list the number of bonds (or angles) for which Mogul statistics could be retrieved, the number of bonds (or angles) that are observed in the model and the number of bonds (or angles) that are defined in the Chemical Component Dictionary. The Link column lists molecule types, if any, to which the group is linked. The Z score for a bond length (or angle) is the number of standard deviations the observed value is removed from the expected value. A bond length (or angle) with  $|Z| > 2$  is considered an outlier worth inspection. RMSZ is the root-mean-square of all Z scores of the bond lengths (or angles).

Mol	Type	Chain	Res	Link	Bond lengths			Bond angles		
					Counts	RMSZ	# Z  > 2	Counts	RMSZ	# Z  > 2
2	FAD	A	1500	1	51,58,58	1.94	6 (11%)	54,89,89	2.07	12 (22%)
3	XCG	A	1501	-	11,16,16	2.32	4 (36%)	10,22,22	1.21	3 (30%)
4	C15	A	1502	-	21,21,21	1.54	1 (4%)	24,26,26	1.03	2 (8%)
2	FAD	B	1500	1	51,58,58	1.78	7 (13%)	54,89,89	2.08	9 (16%)
3	XCG	B	1501	-	11,16,16	2.32	4 (36%)	10,22,22	1.42	1 (10%)
4	C15	B	1502	-	21,21,21	1.72	2 (9%)	24,26,26	1.21	2 (8%)

In the following table, the Chirals column lists the number of chiral outliers, the number of chiral centers analysed, the number of these observed in the model and the number defined in the Chemical Component Dictionary. Similar counts are reported in the Torsion and Rings columns. '-' means no outliers of that kind were identified.

Mol	Type	Chain	Res	Link	Chirals	Torsions	Rings
2	FAD	A	1500	1	-	0/28/50/50	0/6/6/6
3	XCG	A	1501	-	-	0/0/4/4	0/2/3/3
4	C15	A	1502	-	-	0/21/21/21	0/0/0/0
2	FAD	B	1500	1	-	0/28/50/50	0/6/6/6
3	XCG	B	1501	-	-	0/0/4/4	0/2/3/3
4	C15	B	1502	-	-	0/21/21/21	0/0/0/0

All (24) bond length outliers are listed below:

Mol	Chain	Res	Type	Atoms	Z	Observed(Å)	Ideal(Å)
4	B	1502	C15	C1-S1	-6.87	1.67	1.77
4	A	1502	C15	C1-S1	-6.23	1.68	1.77
3	A	1501	XCG	CAL-CAK	-4.87	1.39	1.49
3	B	1501	XCG	CAL-CAK	-4.63	1.39	1.49
3	A	1501	XCG	CAE-CAM	-2.40	1.32	1.41
2	B	1500	FAD	C4-C4X	-2.26	1.37	1.41
3	B	1501	XCG	CAE-CAM	-2.19	1.33	1.41
4	B	1502	C15	C3-N1	-2.13	1.47	1.52
2	A	1500	FAD	C2-N3	2.06	1.42	1.38
3	A	1501	XCG	CAG-NAI	2.12	1.47	1.37
2	B	1500	FAD	C8M-C8	2.27	1.55	1.51
3	B	1501	XCG	CAG-NAI	2.43	1.48	1.37
2	B	1500	FAD	C4X-C10	2.64	1.45	1.41
2	B	1500	FAD	O4B-C1B	2.73	1.45	1.41
2	A	1500	FAD	C8M-C8	2.73	1.56	1.51
2	A	1500	FAD	C5X-N5	3.80	1.41	1.35
2	A	1500	FAD	C4-N3	3.82	1.40	1.33
3	A	1501	XCG	CAG-CAF	4.15	1.52	1.36

Continued on next page...

*Continued from previous page...*

Mol	Chain	Res	Type	Atoms	Z	Observed(Å)	Ideal(Å)
3	B	1501	XCG	CAG-CAF	4.19	1.52	1.36
2	B	1500	FAD	C4X-N5	4.35	1.39	1.33
2	B	1500	FAD	C4-N3	4.40	1.41	1.33
2	A	1500	FAD	C4X-N5	6.32	1.42	1.33
2	B	1500	FAD	C10-N1	7.62	1.43	1.33
2	A	1500	FAD	C10-N1	8.35	1.45	1.33

All (29) bond angle outliers are listed below:

Mol	Chain	Res	Type	Atoms	Z	Observed(°)	Ideal(°)
2	B	1500	FAD	N3A-C2A-N1A	-6.13	123.52	128.86
2	A	1500	FAD	N3A-C2A-N1A	-5.68	123.91	128.86
2	B	1500	FAD	C10-C4X-N5	-5.28	114.53	120.59
2	A	1500	FAD	C4X-C10-N10	-3.70	117.95	120.52
2	B	1500	FAD	C4X-C4-N3	-3.15	119.00	123.48
2	A	1500	FAD	C4B-O4B-C1B	-3.15	106.42	109.77
2	B	1500	FAD	C4B-O4B-C1B	-2.79	106.80	109.77
2	A	1500	FAD	C1B-N9A-C4A	-2.76	121.86	126.64
2	A	1500	FAD	C1'-N10-C10	-2.57	115.86	118.50
2	B	1500	FAD	C1B-N9A-C4A	-2.25	122.74	126.64
2	A	1500	FAD	C7M-C7-C6	-2.11	115.06	120.34
3	A	1501	XCG	CAE-CAM-CAN	2.03	108.04	106.27
3	A	1501	XCG	CAG-NAI-CAK	2.05	109.68	104.39
2	A	1500	FAD	C5A-C6A-N6A	2.15	124.85	120.47
2	A	1500	FAD	C2A-N1A-C6A	2.20	122.63	118.77
4	A	1502	C15	O3S-S1-C1	2.28	108.86	106.06
3	A	1501	XCG	CAF-NAH-CAK	2.33	110.41	104.39
2	B	1500	FAD	C4X-N5-C5X	2.61	119.52	116.76
3	B	1501	XCG	CAF-NAH-CAK	2.88	111.83	104.39
2	A	1500	FAD	C5X-C9A-N10	2.97	119.87	117.66
2	B	1500	FAD	C1'-N10-C9A	3.07	121.16	118.35
2	A	1500	FAD	C4-C4X-N5	3.39	122.40	118.68
4	B	1502	C15	O1S-S1-C1	3.40	109.71	106.79
4	A	1502	C15	O1S-S1-C1	3.45	109.76	106.79
4	B	1502	C15	O3S-S1-C1	3.98	110.95	106.06
2	B	1500	FAD	C4-C4X-N5	5.44	124.65	118.68
2	A	1500	FAD	C4-N3-C2	6.26	120.64	115.16
2	A	1500	FAD	C1'-N10-C9A	6.80	124.58	118.35
2	B	1500	FAD	C4-N3-C2	7.16	121.42	115.16

There are no chirality outliers.

There are no torsion outliers.

There are no ring outliers.

4 monomers are involved in 13 short contacts:

Mol	Chain	Res	Type	Clashes	Symm-Clashes
2	A	1500	FAD	1	0
3	A	1501	XCG	6	0
3	B	1501	XCG	5	0
4	B	1502	C15	1	0

## 5.7 Other polymers [i](#)

There are no such residues in this entry.

## 5.8 Polymer linkage issues [i](#)

There are no chain breaks in this entry.



## 6 Fit of model and data ⓘ

### 6.1 Protein, DNA and RNA chains ⓘ

In the following table, the column labelled ‘#RSRZ> 2’ contains the number (and percentage) of RSRZ outliers, followed by percent RSRZ outliers for the chain as percentile scores relative to all X-ray entries and entries of similar resolution. The OWAB column contains the minimum, median, 95<sup>th</sup> percentile and maximum values of the occupancy-weighted average B-factor per residue. The column labelled ‘Q< 0.9’ lists the number of (and percentage) of residues with an average occupancy less than 0.9.

Mol	Chain	Analysed	<RSRZ>	#RSRZ>2	OWAB(Å <sup>2</sup> )	Q<0.9
1	A	499/520 (95%)	-0.16	12 (2%) 59 59	8, 13, 27, 58	0
1	B	494/520 (95%)	-0.24	14 (2%) 53 53	7, 12, 26, 57	0
All	All	993/1040 (95%)	-0.20	26 (2%) 56 55	7, 12, 27, 58	0

All (26) RSRZ outliers are listed below:

Mol	Chain	Res	Type	RSRZ
1	A	500	THR	7.3
1	A	501	ILE	7.2
1	B	107	TRP	6.4
1	A	498	LEU	6.0
1	B	495	LEU	5.8
1	A	499	THR	5.6
1	B	494	ARG	4.7
1	A	495	LEU	4.2
1	B	496	ILE	4.1
1	B	482	LEU	3.8
1	A	497	GLY	3.7
1	B	243	GLU	3.5
1	B	481	PHE	3.3
1	A	481	PHE	3.3
1	A	494	ARG	3.1
1	B	244	ASN	2.9
1	A	107	TRP	2.6
1	B	354	ARG	2.6
1	B	242	ARG	2.5
1	B	252	HIS	2.2
1	A	496	ILE	2.1
1	B	493	LEU	2.1
1	A	302	LYS	2.1
1	B	3	ASN	2.0

*Continued on next page...*

*Continued from previous page...*

Mol	Chain	Res	Type	RSRZ
1	A	459	GLU	2.0
1	B	459	GLU	2.0

## 6.2 Non-standard residues in protein, DNA, RNA chains [i](#)

There are no non-standard protein/DNA/RNA residues in this entry.

## 6.3 Carbohydrates [i](#)

There are no carbohydrates in this entry.

## 6.4 Ligands [i](#)

In the following table, the Atoms column lists the number of modelled atoms in the group and the number defined in the chemical component dictionary. LLDF column lists the quality of electron density of the group with respect to its neighbouring residues in protein, DNA or RNA chains. The B-factors column lists the minimum, median, 95<sup>th</sup> percentile and maximum values of B factors of atoms in the group. The column labelled 'Q< 0.9' lists the number of atoms with occupancy less than 0.9.

Mol	Type	Chain	Res	Atoms	RSCC	RSR	LLDF	B-factors(Å <sup>2</sup> )	Q<0.9
4	C15	A	1502	22/22	0.82	0.18	2.24	19,38,49,50	0
3	XCG	B	1501	14/14	0.89	0.13	1.40	18,22,24,25	0
2	FAD	A	1500	53/53	0.98	0.07	-0.17	6,8,10,10	0
3	XCG	A	1501	14/14	0.94	0.10	-0.26	16,20,22,22	0
2	FAD	B	1500	53/53	0.98	0.07	-1.04	5,7,9,10	0
4	C15	B	1502	22/22	0.74	0.31	-	42,55,62,62	0

## 6.5 Other polymers [i](#)

There are no such residues in this entry.