



Full wwPDB X-ray Structure Validation Report ⓘ

Dec 13, 2017 – 11:19 PM EST

PDB ID : 2XFQ
Title : rasagiline-inhibited human monoamine oxidase B in complex with 2-(2-benzofuranyl)-2-imidazoline
Authors : Bonivento, D.; Milczek, E.M.; McDonald, G.R.; Binda, C.; Holt, A.; Edmondson, D.E.; Mattevi, A.
Deposited on : unknown
Resolution : 2.20 Å(reported)

This is a Full wwPDB X-ray Structure Validation Report for a publicly released PDB entry.

We welcome your comments at validation@mail.wwpdb.org

A user guide is available at

<http://wwpdb.org/validation/2016/XrayValidationReportHelp>

with specific help available everywhere you see the ⓘ symbol.

The following versions of software and data (see [references ⓘ](#)) were used in the production of this report:

MolProbity : 4.02b-467
Mogul : 1.7.2 (RC1), CSD as538be (2017)
Xtriage (Phenix) : 1.9-1692
EDS : rb-20030345
Percentile statistics : 20161228.v01 (using entries in the PDB archive December 28th 2016)
Refmac : 5.8.0135
CCP4 : 6.5.0
Ideal geometry (proteins) : Engh & Huber (2001)
Ideal geometry (DNA, RNA) : Parkinson et al. (1996)
Validation Pipeline (wwPDB-VP) : rb-20030345

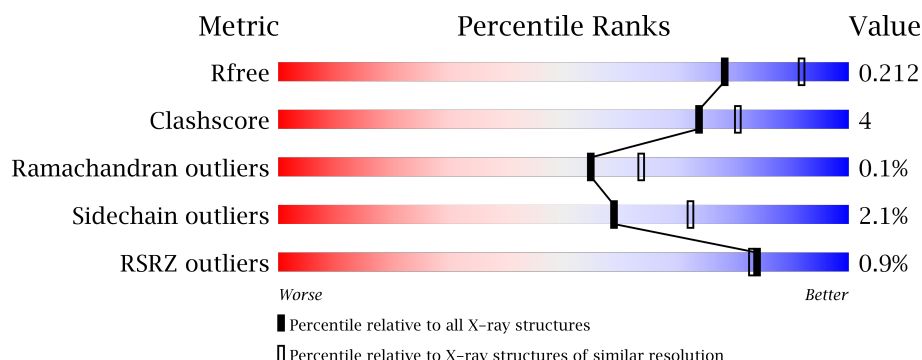
1 Overall quality at a glance

The following experimental techniques were used to determine the structure:

X-RAY DIFFRACTION

The reported resolution of this entry is 2.20 Å.

Percentile scores (ranging between 0-100) for global validation metrics of the entry are shown in the following graphic. The table shows the number of entries on which the scores are based.



Metric	Whole archive (#Entries)	Similar resolution (#Entries, resolution range(Å))
R_{free}	100719	4002 (2.20-2.20)
Clashscore	112137	4730 (2.20-2.20)
Ramachandran outliers	110173	4656 (2.20-2.20)
Sidechain outliers	110143	4657 (2.20-2.20)
RSRZ outliers	101464	4033 (2.20-2.20)

The table below summarises the geometric issues observed across the polymeric chains and their fit to the electron density. The red, orange, yellow and green segments on the lower bar indicate the fraction of residues that contain outliers for ≥ 3 , 2, 1 and 0 types of geometric quality criteria. A grey segment represents the fraction of residues that are not modelled. The numeric value for each fraction is indicated below the corresponding segment, with a dot representing fractions $\leq 5\%$. The upper red bar (where present) indicates the fraction of residues that have poor fit to the electron density. The numeric value is given above the bar.

Mol	Chain	Length	Quality of chain
1	A	520	<div> <div style="width: 100%; height: 10px; background: linear-gradient(to right, red 1%, orange 1%, yellow 1%, green 87%, grey 8%);"></div> <div style="display: flex; justify-content: space-between; width: 100%;"> 100% 87% 8% • • </div> </div>
1	B	520	<div> <div style="width: 100%; height: 10px; background: linear-gradient(to right, red 1%, orange 1%, yellow 1%, green 86%, grey 8%, grey 5%);"></div> <div style="display: flex; justify-content: space-between; width: 100%;"> 100% 86% 8% • 5% </div> </div>

2 Entry composition [i](#)

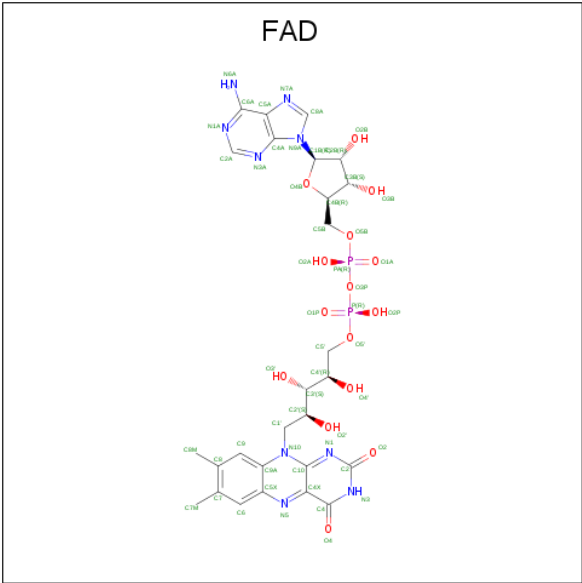
There are 6 unique types of molecules in this entry. The entry contains 8587 atoms, of which 0 are hydrogens and 0 are deuteriums.

In the tables below, the ZeroOcc column contains the number of atoms modelled with zero occupancy, the AltConf column contains the number of residues with at least one atom in alternate conformation and the Trace column contains the number of residues modelled with at most 2 atoms.

- Molecule 1 is a protein called AMINE OXIDASE [FLAVIN-CONTAINING] B.

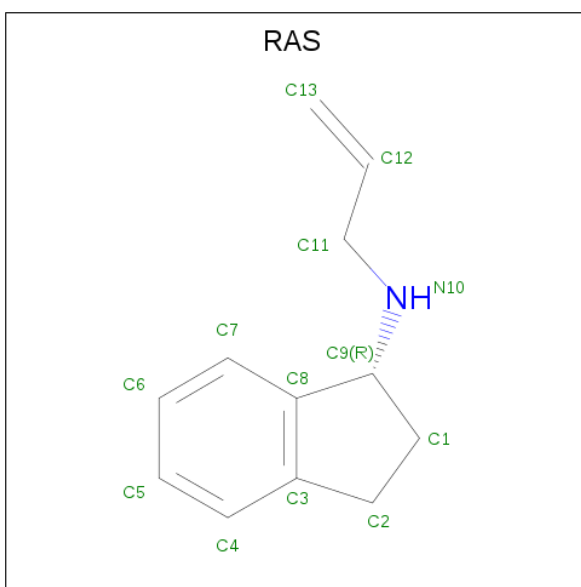
Mol	Chain	Residues	Atoms					ZeroOcc	AltConf	Trace
1	A	499	Total	C	N	O	S	0	1	0
			3982	2546	682	729	25			
1	B	494	Total	C	N	O	S	0	2	0
			3951	2526	677	722	26			

- Molecule 2 is FLAVIN-ADENINE DINUCLEOTIDE (three-letter code: FAD) (formula: C₂₇H₃₃N₉O₁₅P₂).



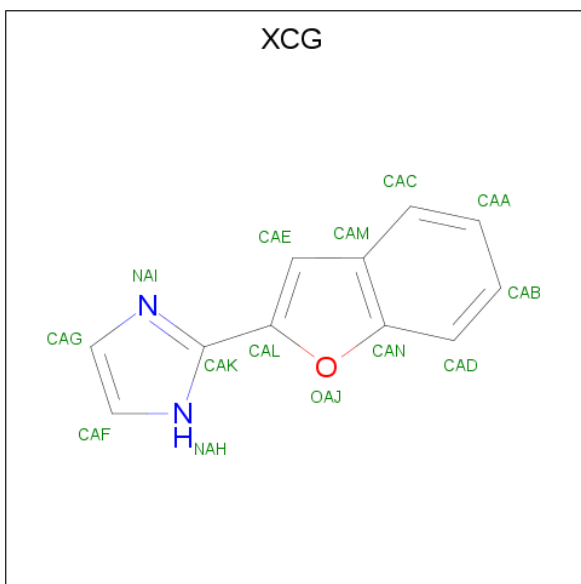
Mol	Chain	Residues	Atoms					ZeroOcc	AltConf
2	A	1	Total	C	N	O	P	0	0
			53	27	9	15	2		
2	B	1	Total	C	N	O	P	0	0
			53	27	9	15	2		

- Molecule 3 is (1R)-N-(prop-2-en-1-yl)-2,3-dihydro-1H-inden-1-amine (three-letter code: RAS) (formula: C₁₂H₁₅N).



Mol	Chain	Residues	Atoms			ZeroOcc	AltConf
3	A	1	Total	C	N	0	0
			13	12	1		
3	B	1	Total	C	N	0	0
			13	12	1		

- Molecule 4 is 2-(2-BENZOFURANYL)-2-IMIDAZOLINE (three-letter code: XCG) (formula: $C_{11}H_8N_2O$).



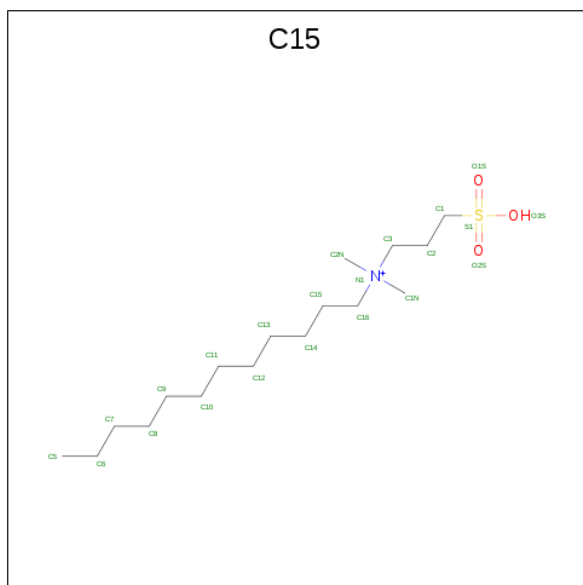
Mol	Chain	Residues	Atoms				ZeroOcc	AltConf
4	A	1	Total	C	N	O	0	0
			14	11	2	1		

Continued on next page...

Continued from previous page...

Mol	Chain	Residues	Atoms				ZeroOcc	AltConf
4	B	1	Total	C	N	O	0	0
			14	11	2	1		

- Molecule 5 is N-DODECYL-N,N-DIMETHYL-3-AMMONIO-1-PROPANESULFONATE (three-letter code: C15) (formula: $C_{17}H_{38}NO_3S$).



Mol	Chain	Residues	Atoms					ZeroOcc	AltConf
5	A	1	Total	C	N	O	S	0	0
			22	17	1	3	1		

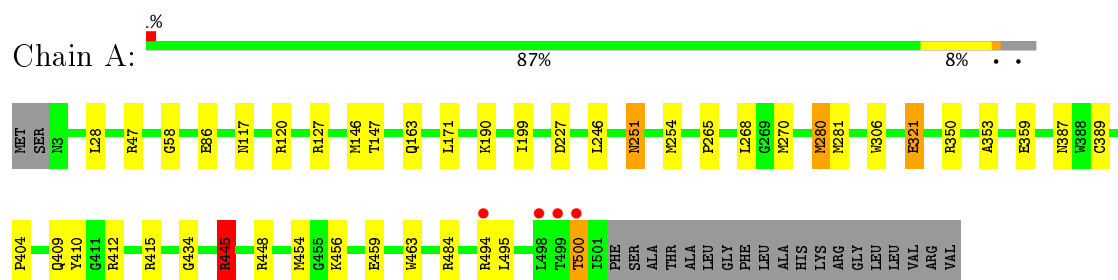
- Molecule 6 is water.

Mol	Chain	Residues	Atoms		ZeroOcc	AltConf
6	A	212	Total	O	0	0
			212	212		
6	B	260	Total	O	0	0
			260	260		

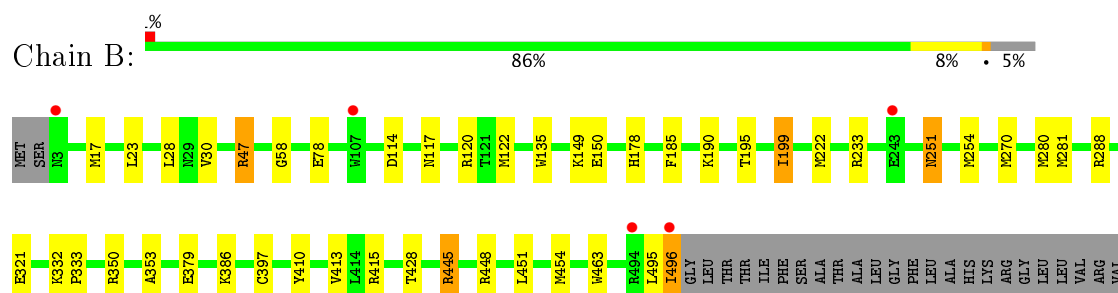
3 Residue-property plots [i](#)

These plots are drawn for all protein, RNA and DNA chains in the entry. The first graphic for a chain summarises the proportions of the various outlier classes displayed in the second graphic. The second graphic shows the sequence view annotated by issues in geometry and electron density. Residues are color-coded according to the number of geometric quality criteria for which they contain at least one outlier: green = 0, yellow = 1, orange = 2 and red = 3 or more. A red dot above a residue indicates a poor fit to the electron density ($RSRZ > 2$). Stretches of 2 or more consecutive residues without any outlier are shown as a green connector. Residues present in the sample, but not in the model, are shown in grey.

- Molecule 1: AMINE OXIDASE [FLAVIN-CONTAINING] B



- Molecule 1: AMINE OXIDASE [FLAVIN-CONTAINING] B



4 Data and refinement statistics

Property	Value	Source
Space group	C 2 2 2	Depositor
Cell constants a, b, c, α , β , γ	131.51Å 223.38Å 86.55Å 90.00° 90.00° 90.00°	Depositor
Resolution (Å)	40.40 – 2.20 40.43 – 2.20	Depositor EDS
% Data completeness (in resolution range)	98.9 (40.40-2.20) 98.9 (40.43-2.20)	Depositor EDS
R_{merge}	0.09	Depositor
R_{sym}	(Not available)	Depositor
$\langle I/\sigma(I) \rangle$ ¹	5.33 (at 2.20Å)	Xtriage
Refinement program	REFMAC 5.5.0109	Depositor
R, R_{free}	0.159 , (Not available) 0.159 , 0.212	Depositor DCC
R_{free} test set	1641 reflections (2.62%)	DCC
Wilson B-factor (Å ²)	18.1	Xtriage
Anisotropy	0.106	Xtriage
Bulk solvent k_{sol} (e/Å ³), B_{sol} (Å ²)	0.36 , 39.6	EDS
L-test for twinning ²	$\langle L \rangle = 0.49$, $\langle L^2 \rangle = 0.32$	Xtriage
Estimated twinning fraction	0.014 for 1/2*h-1/2*k,-3/2*h-1/2*k,-l 0.018 for 1/2*h+1/2*k,3/2*h-1/2*k,-l	Xtriage
F_o, F_c correlation	0.95	EDS
Total number of atoms	8587	wwPDB-VP
Average B, all atoms (Å ²)	17.0	wwPDB-VP

Xtriage's analysis on translational NCS is as follows: *The largest off-origin peak in the Patterson function is 3.38% of the height of the origin peak. No significant pseudotranslation is detected.*

¹Intensities estimated from amplitudes.

²Theoretical values of $\langle |L| \rangle$, $\langle L^2 \rangle$ for acentric reflections are 0.5, 0.333 respectively for untwinned datasets, and 0.375, 0.2 for perfectly twinned datasets.

5 Model quality [i](#)

5.1 Standard geometry [i](#)

Bond lengths and bond angles in the following residue types are not validated in this section: C15, RAS, FAD, XCG

The Z score for a bond length (or angle) is the number of standard deviations the observed value is removed from the expected value. A bond length (or angle) with $|Z| > 5$ is considered an outlier worth inspection. RMSZ is the root-mean-square of all Z scores of the bond lengths (or angles).

Mol	Chain	Bond lengths		Bond angles	
		RMSZ	$\# Z > 5$	RMSZ	$\# Z > 5$
1	A	1.04	3/4079 (0.1%)	0.91	9/5536 (0.2%)
1	B	1.03	4/4051 (0.1%)	0.91	10/5497 (0.2%)
All	All	1.04	7/8130 (0.1%)	0.91	19/11033 (0.2%)

All (7) bond length outliers are listed below:

Mol	Chain	Res	Type	Atoms	Z	Observed(Å)	Ideal(Å)
1	B	150	GLU	CD-OE2	6.18	1.32	1.25
1	B	321	GLU	CB-CG	5.46	1.62	1.52
1	A	359	GLU	CG-CD	5.42	1.60	1.51
1	A	306	TRP	CB-CG	5.21	1.59	1.50
1	A	86	GLU	CB-CG	5.17	1.61	1.52
1	B	135	TRP	CB-CG	5.03	1.59	1.50
1	B	150	GLU	CG-CD	5.01	1.59	1.51

All (19) bond angle outliers are listed below:

Mol	Chain	Res	Type	Atoms	Z	Observed(°)	Ideal(°)
1	B	448	ARG	NE-CZ-NH2	-16.03	112.28	120.30
1	A	448	ARG	NE-CZ-NH2	-14.79	112.91	120.30
1	A	448	ARG	NE-CZ-NH1	13.97	127.29	120.30
1	B	448	ARG	NE-CZ-NH1	13.16	126.88	120.30
1	A	445	ARG	NE-CZ-NH2	-12.72	113.94	120.30
1	B	445	ARG	NE-CZ-NH2	-10.49	115.06	120.30
1	A	445	ARG	NE-CZ-NH1	10.16	125.38	120.30
1	B	47	ARG	NE-CZ-NH1	9.72	125.16	120.30
1	A	47	ARG	NE-CZ-NH2	-8.73	115.94	120.30
1	B	47	ARG	NE-CZ-NH2	-8.49	116.06	120.30
1	A	47	ARG	NE-CZ-NH1	8.31	124.46	120.30
1	B	445	ARG	NE-CZ-NH1	7.78	124.19	120.30

Continued on next page...

Continued from previous page...

Mol	Chain	Res	Type	Atoms	Z	Observed(°)	Ideal(°)
1	B	47	ARG	CB-CG-CD	5.76	126.58	111.60
1	A	415	ARG	CG-CD-NE	-5.63	99.97	111.80
1	A	146	MET	CB-CA-C	-5.63	99.13	110.40
1	B	199	ILE	CB-CA-C	-5.42	100.77	111.60
1	B	288	ARG	NE-CZ-NH2	-5.30	117.65	120.30
1	B	114	ASP	CB-CG-OD1	5.27	123.05	118.30
1	A	127	ARG	NE-CZ-NH2	-5.12	117.74	120.30

There are no chirality outliers.

There are no planarity outliers.

5.2 Too-close contacts ⓘ

In the following table, the Non-H and H(model) columns list the number of non-hydrogen atoms and hydrogen atoms in the chain respectively. The H(added) column lists the number of hydrogen atoms added and optimized by MolProbity. The Clashes column lists the number of clashes within the asymmetric unit, whereas Symm-Clashes lists symmetry related clashes.

Mol	Chain	Non-H	H(model)	H(added)	Clashes	Symm-Clashes
1	A	3982	0	3984	33	0
1	B	3951	0	3950	37	0
2	A	53	0	29	4	0
2	B	53	0	29	1	0
3	A	13	0	14	3	0
3	B	13	0	14	0	0
4	A	14	0	8	1	0
4	B	14	0	8	0	0
5	A	22	0	38	0	0
6	A	212	0	0	2	0
6	B	260	0	0	2	0
All	All	8587	0	8074	61	0

The all-atom clashscore is defined as the number of clashes found per 1000 atoms (including hydrogen atoms). The all-atom clashscore for this structure is 4.

All (61) close contacts within the same asymmetric unit are listed below, sorted by their clash magnitude.

Atom-1	Atom-2	Interatomic distance (Å)	Clash overlap (Å)
1:B:117:ASN:HD22	1:B:120:ARG:HH21	1.20	0.87
1:A:280:MET:HE1	1:B:353:ALA:HB1	1.67	0.75

Continued on next page...

Continued from previous page...

Atom-1	Atom-2	Interatomic distance (Å)	Clash overlap (Å)
1:A:117:ASN:HD22	1:A:120:ARG:HH21	1.35	0.74
2:A:600:FAD:C4X	3:A:601:RAS:C13	2.65	0.72
1:A:251:ASN:H	1:A:251:ASN:HD22	1.38	0.71
2:A:600:FAD:C5X	3:A:601:RAS:C13	2.66	0.70
1:B:47:ARG:HD3	6:B:2123:HOH:O	1.95	0.66
1:B:251:ASN:H	1:B:251:ASN:HD22	1.45	0.65
1:B:386:LYS:NZ	6:B:2196:HOH:O	2.28	0.63
1:A:246:LEU:HB3	1:A:254:MET:HE1	1.81	0.62
1:B:451:LEU:HD23	1:B:454:MET:CE	2.29	0.61
1:B:445:ARG:HD2	1:B:463:TRP:CH2	2.35	0.61
1:A:387:ASN:ND2	1:B:280:MET:HE1	2.16	0.60
1:A:387:ASN:HD21	1:B:280:MET:HE1	1.68	0.59
1:B:195:THR:O	1:B:199:ILE:HG12	2.03	0.58
1:B:117:ASN:HD22	1:B:120:ARG:NH2	1.97	0.58
1:A:387:ASN:ND2	1:B:280:MET:CE	2.70	0.55
1:A:445:ARG:HD2	1:A:463:TRP:CZ2	2.42	0.55
1:A:171:LEU:HD21	3:A:601:RAS:H21	1.90	0.54
1:B:28:LEU:HD11	1:B:454:MET:CE	2.37	0.53
1:A:387:ASN:HD21	1:B:280:MET:CE	2.22	0.53
1:A:445:ARG:HD2	1:A:463:TRP:CH2	2.45	0.52
1:B:445:ARG:HD2	1:B:463:TRP:CZ2	2.44	0.52
1:B:281:MET:HB3	1:B:413:VAL:HG21	1.93	0.51
1:B:117:ASN:ND2	1:B:120:ARG:HH21	1.97	0.50
1:B:451:LEU:HA	1:B:454:MET:HE2	1.93	0.50
6:A:2074:HOH:O	1:B:149:LYS:HE3	2.12	0.50
1:A:270[B]:MET:SD	1:B:270[B]:MET:SD	3.09	0.50
1:B:122:MET:HE1	1:B:185:PHE:HE2	1.77	0.49
1:A:454:MET:HE3	1:A:456:LYS:HD2	1.94	0.49
1:A:321:GLU:CD	1:A:321:GLU:H	2.17	0.48
1:B:122:MET:CE	1:B:185:PHE:HE2	2.27	0.48
1:A:353:ALA:CB	1:B:280:MET:HE1	2.44	0.47
1:A:353:ALA:HB1	1:B:280:MET:HE1	1.94	0.47
1:A:265:PRO:HD2	1:A:268:LEU:HD12	1.96	0.47
1:B:23:LEU:HB2	1:B:30:VAL:HG11	1.98	0.46
1:B:28:LEU:HD11	1:B:454:MET:HE3	1.98	0.46
1:B:17:MET:HE3	1:B:222:MET:N	2.31	0.45
1:A:199:ILE:HD12	4:A:602:XCG:CAE	2.47	0.44
1:A:147:THR:HG22	1:A:404:PRO:HG3	2.00	0.44
1:B:415:ARG:HG2	1:B:428:THR:HB	1.99	0.44
1:A:28:LEU:HD21	1:A:456:LYS:HE3	1.99	0.44
1:B:332:LYS:HB3	1:B:333:PRO:HD2	1.99	0.43

Continued on next page...

Continued from previous page...

Atom-1	Atom-2	Interatomic distance (Å)	Clash overlap (Å)
1:A:389:CYS:HB3	1:B:280:MET:HG3	2.00	0.43
1:A:246:LEU:HB3	1:A:254:MET:CE	2.47	0.43
1:A:410:TYR:OH	1:B:350:ARG:HD3	2.18	0.43
1:A:484:ARG:NH1	6:A:2206:HOH:O	2.51	0.43
1:B:251:ASN:H	1:B:251:ASN:ND2	2.14	0.43
1:A:280:MET:HB3	1:A:280:MET:HE3	1.82	0.43
1:B:149:LYS:HD3	1:B:178:HIS:HB3	2.01	0.42
1:A:58:GLY:HA2	2:A:600:FAD:C4X	2.49	0.42
1:B:233:ARG:HG3	1:B:251:ASN:HD21	1.84	0.42
1:B:495:LEU:O	1:B:496:ILE:HG13	2.19	0.42
1:A:350:ARG:HD3	1:B:410:TYR:OH	2.20	0.41
1:B:58:GLY:HA2	2:B:600:FAD:C4X	2.51	0.41
1:A:251:ASN:N	1:A:251:ASN:HD22	2.13	0.41
1:A:434:GLY:O	2:A:600:FAD:H1'2	2.20	0.41
1:A:28:LEU:HD11	1:A:454:MET:CE	2.51	0.40
1:A:117:ASN:ND2	1:A:120:ARG:HH21	2.10	0.40
1:A:281:MET:HE1	1:A:409:GLN:O	2.22	0.40
1:A:500:THR:O	1:A:500:THR:HG22	2.21	0.40

There are no symmetry-related clashes.

5.3 Torsion angles [i](#)

5.3.1 Protein backbone [i](#)

In the following table, the Percentiles column shows the percent Ramachandran outliers of the chain as a percentile score with respect to all X-ray entries followed by that with respect to entries of similar resolution.

The Analysed column shows the number of residues for which the backbone conformation was analysed, and the total number of residues.

Mol	Chain	Analysed	Favoured	Allowed	Outliers	Percentiles	
1	A	498/520 (96%)	485 (97%)	12 (2%)	1 (0%)	51	58
1	B	494/520 (95%)	478 (97%)	16 (3%)	0	100	100
All	All	992/1040 (95%)	963 (97%)	28 (3%)	1 (0%)	55	63

All (1) Ramachandran outliers are listed below:

Mol	Chain	Res	Type
1	A	500	THR

5.3.2 Protein sidechains ⓘ

In the following table, the Percentiles column shows the percent sidechain outliers of the chain as a percentile score with respect to all X-ray entries followed by that with respect to entries of similar resolution.

The Analysed column shows the number of residues for which the sidechain conformation was analysed, and the total number of residues.

Mol	Chain	Analysed	Rotameric	Outliers	Percentiles	
1	A	429/444 (97%)	418 (97%)	11 (3%)	51	64
1	B	426/444 (96%)	419 (98%)	7 (2%)	68	81
All	All	855/888 (96%)	837 (98%)	18 (2%)	59	72

All (18) residues with a non-rotameric sidechain are listed below:

Mol	Chain	Res	Type
1	A	163	GLN
1	A	190	LYS
1	A	227	ASP
1	A	251	ASN
1	A	280	MET
1	A	321	GLU
1	A	412	ARG
1	A	445	ARG
1	A	459	GLU
1	A	494	ARG
1	A	495	LEU
1	B	78	GLU
1	B	190	LYS
1	B	251	ASN
1	B	254	MET
1	B	379	GLU
1	B	397	CYS
1	B	496	ILE

Some sidechains can be flipped to improve hydrogen bonding and reduce clashes. All (6) such sidechains are listed below:

Mol	Chain	Res	Type
1	A	117	ASN
1	A	251	ASN
1	A	387	ASN
1	A	452	HIS
1	B	117	ASN
1	B	251	ASN

5.3.3 RNA ⓘ

There are no RNA molecules in this entry.

5.4 Non-standard residues in protein, DNA, RNA chains ⓘ

There are no non-standard protein/DNA/RNA residues in this entry.

5.5 Carbohydrates ⓘ

There are no carbohydrates in this entry.

5.6 Ligand geometry ⓘ

7 ligands are modelled in this entry.

In the following table, the Counts columns list the number of bonds (or angles) for which Mogul statistics could be retrieved, the number of bonds (or angles) that are observed in the model and the number of bonds (or angles) that are defined in the Chemical Component Dictionary. The Link column lists molecule types, if any, to which the group is linked. The Z score for a bond length (or angle) is the number of standard deviations the observed value is removed from the expected value. A bond length (or angle) with $|Z| > 2$ is considered an outlier worth inspection. RMSZ is the root-mean-square of all Z scores of the bond lengths (or angles).

Mol	Type	Chain	Res	Link	Bond lengths			Bond angles		
					Counts	RMSZ	# $ Z > 2$	Counts	RMSZ	# $ Z > 2$
5	C15	A	1503	-	21,21,21	1.36	1 (4%)	24,26,26	1.39	3 (12%)
2	FAD	A	600	1,3	51,58,58	1.94	11 (21%)	54,89,89	2.35	10 (18%)
3	RAS	A	601	2	13,14,14	4.72	2 (15%)	16,18,18	1.90	2 (12%)
4	XCG	A	602	-	11,16,16	2.45	4 (36%)	10,22,22	1.28	2 (20%)
2	FAD	B	600	1,3	51,58,58	2.39	12 (23%)	54,89,89	2.66	12 (22%)
3	RAS	B	601	2	13,14,14	4.55	1 (7%)	16,18,18	2.10	4 (25%)
4	XCG	B	602	-	11,16,16	2.30	4 (36%)	10,22,22	1.63	3 (30%)

In the following table, the Chirals column lists the number of chiral outliers, the number of chiral centers analysed, the number of these observed in the model and the number defined in the Chemical Component Dictionary. Similar counts are reported in the Torsion and Rings columns. '-' means no outliers of that kind were identified.

Mol	Type	Chain	Res	Link	Chirals	Torsions	Rings
5	C15	A	1503	-	-	0/21/21/21	0/0/0/0
2	FAD	A	600	1,3	-	0/28/50/50	0/6/6/6
3	RAS	A	601	2	-	0/4/13/13	0/2/2/2
4	XCG	A	602	-	-	0/0/4/4	0/2/3/3
2	FAD	B	600	1,3	-	0/28/50/50	0/6/6/6
3	RAS	B	601	2	-	0/4/13/13	0/2/2/2
4	XCG	B	602	-	-	0/0/4/4	0/2/3/3

All (35) bond length outliers are listed below:

Mol	Chain	Res	Type	Atoms	Z	Observed(Å)	Ideal(Å)
3	A	601	RAS	C11-N10	-16.56	1.25	1.46
3	B	601	RAS	C11-N10	-16.17	1.26	1.46
5	A	1503	C15	C1-S1	-5.19	1.69	1.77
4	A	602	XCG	CAL-CAK	-4.61	1.40	1.49
4	B	602	XCG	CAL-CAK	-4.25	1.40	1.49
2	B	600	FAD	C6-C5X	-2.70	1.37	1.41
2	B	600	FAD	C2B-C1B	-2.22	1.50	1.53
2	A	600	FAD	C6-C5X	-2.04	1.38	1.41
2	B	600	FAD	C1'-N10	2.01	1.50	1.48
2	A	600	FAD	C2-N3	2.01	1.42	1.38
2	A	600	FAD	C8M-C8	2.04	1.55	1.51
2	B	600	FAD	C2A-N3A	2.05	1.35	1.32
4	A	602	XCG	CAF-NAH	2.11	1.47	1.37
2	B	600	FAD	C8M-C8	2.12	1.55	1.51
2	A	600	FAD	C7M-C7	2.23	1.55	1.51
3	A	601	RAS	C2-C3	2.24	1.54	1.51
4	B	602	XCG	CAG-NAI	2.47	1.49	1.37
2	A	600	FAD	C5'-C4'	2.47	1.55	1.51
4	B	602	XCG	CAF-NAH	2.51	1.49	1.37
4	A	602	XCG	CAG-NAI	2.51	1.49	1.37
2	B	600	FAD	C5X-N5	2.67	1.39	1.35
2	A	600	FAD	C9A-N10	2.95	1.42	1.38
2	A	600	FAD	C4-N3	3.09	1.38	1.33
2	A	600	FAD	C4X-C10	3.17	1.46	1.41
2	B	600	FAD	O4B-C1B	3.55	1.46	1.41
2	B	600	FAD	C9A-N10	3.56	1.43	1.38
2	A	600	FAD	C5X-N5	3.67	1.40	1.35
2	B	600	FAD	C5'-C4'	4.15	1.57	1.51

Continued on next page...

Continued from previous page...

Mol	Chain	Res	Type	Atoms	Z	Observed(Å)	Ideal(Å)
4	B	602	XCG	CAG-CAF	4.48	1.53	1.36
4	A	602	XCG	CAG-CAF	4.70	1.54	1.36
2	B	600	FAD	C4-N3	4.84	1.41	1.33
2	A	600	FAD	C4X-N5	5.36	1.41	1.33
2	B	600	FAD	C4X-N5	7.65	1.44	1.33
2	A	600	FAD	C10-N1	7.96	1.44	1.33
2	B	600	FAD	C10-N1	9.86	1.47	1.33

All (36) bond angle outliers are listed below:

Mol	Chain	Res	Type	Atoms	Z	Observed(°)	Ideal(°)
2	A	600	FAD	C4X-C10-N10	-8.60	114.55	120.52
2	B	600	FAD	N3A-C2A-N1A	-8.35	121.58	128.86
2	A	600	FAD	N3A-C2A-N1A	-8.01	121.89	128.86
2	B	600	FAD	C4X-C10-N10	-7.37	115.40	120.52
2	B	600	FAD	C10-C4X-N5	-6.32	113.33	120.59
2	A	600	FAD	C10-C4X-N5	-6.02	113.67	120.59
3	B	601	RAS	C6-C7-C8	-4.34	115.44	121.01
3	A	601	RAS	C1-C9-N10	-3.84	107.71	115.48
3	B	601	RAS	C5-C4-C3	-3.77	115.23	120.88
2	B	600	FAD	C9A-C5X-N5	-3.61	116.87	122.24
2	B	600	FAD	C4A-C5A-N7A	-3.08	106.43	109.41
2	B	600	FAD	C4-C4X-C10	-2.96	117.57	119.96
2	A	600	FAD	C9A-C5X-N5	-2.81	118.05	122.24
3	B	601	RAS	C8-C9-N10	-2.79	109.07	113.94
2	A	600	FAD	C4X-C4-N3	-2.49	119.93	123.48
2	A	600	FAD	C1B-N9A-C4A	-2.42	122.46	126.64
2	B	600	FAD	C1B-N9A-C4A	-2.25	122.74	126.64
2	B	600	FAD	C2A-N1A-C6A	2.03	122.33	118.77
2	A	600	FAD	O2P-P-O1P	2.07	122.98	112.28
2	B	600	FAD	C6-C5X-N5	2.27	121.63	118.97
2	A	600	FAD	C6-C5X-C9A	2.29	121.97	119.00
4	A	602	XCG	CAG-NAI-CAK	2.29	110.31	104.39
4	B	602	XCG	CAE-CAM-CAN	2.32	108.29	106.27
5	A	1503	C15	O2S-S1-C1	2.38	108.83	106.79
3	B	601	RAS	C4-C3-C8	2.40	122.64	119.98
4	B	602	XCG	CAG-NAI-CAK	2.47	110.78	104.39
4	B	602	XCG	CAF-NAH-CAK	2.64	111.19	104.39
5	A	1503	C15	O1S-S1-C1	2.71	109.12	106.79
2	B	600	FAD	C4X-N5-C5X	2.78	119.69	116.76
4	A	602	XCG	CAF-NAH-CAK	2.86	111.78	104.39
5	A	1503	C15	O3S-S1-C1	4.42	111.49	106.06

Continued on next page...

Continued from previous page...

Mol	Chain	Res	Type	Atoms	Z	Observed(°)	Ideal(°)
2	A	600	FAD	C4-C4X-N5	5.13	124.30	118.68
2	A	600	FAD	C4-N3-C2	5.52	119.99	115.16
3	A	601	RAS	C1-C9-C8	5.64	107.11	102.80
2	B	600	FAD	C4-N3-C2	6.52	120.86	115.16
2	B	600	FAD	C4-C4X-N5	8.57	128.08	118.68

There are no chirality outliers.

There are no torsion outliers.

There are no ring outliers.

4 monomers are involved in 7 short contacts:

Mol	Chain	Res	Type	Clashes	Symm-Clashes
2	A	600	FAD	4	0
3	A	601	RAS	3	0
4	A	602	XCG	1	0
2	B	600	FAD	1	0

5.7 Other polymers [i](#)

There are no such residues in this entry.

5.8 Polymer linkage issues [i](#)

There are no chain breaks in this entry.

6 Fit of model and data [i](#)

6.1 Protein, DNA and RNA chains [i](#)

In the following table, the column labelled ‘#RSRZ> 2’ contains the number (and percentage) of RSRZ outliers, followed by percent RSRZ outliers for the chain as percentile scores relative to all X-ray entries and entries of similar resolution. The OWAB column contains the minimum, median, 95th percentile and maximum values of the occupancy-weighted average B-factor per residue. The column labelled ‘Q< 0.9’ lists the number of (and percentage) of residues with an average occupancy less than 0.9.

Mol	Chain	Analysed	<RSRZ>	#RSRZ>2	OWAB(Å ²)	Q<0.9
1	A	499/520 (95%)	-0.73	4 (0%) 86 85	8, 16, 33, 68	0
1	B	494/520 (95%)	-0.56	5 (1%) 82 81	7, 14, 32, 66	0
All	All	993/1040 (95%)	-0.65	9 (0%) 84 83	7, 15, 33, 68	0

All (9) RSRZ outliers are listed below:

Mol	Chain	Res	Type	RSRZ
1	A	500	THR	3.5
1	B	107	TRP	3.0
1	A	498	LEU	2.7
1	B	496	ILE	2.6
1	B	494	ARG	2.4
1	B	243	GLU	2.1
1	A	499	THR	2.0
1	A	494	ARG	2.0
1	B	3	ASN	2.0

6.2 Non-standard residues in protein, DNA, RNA chains [i](#)

There are no non-standard protein/DNA/RNA residues in this entry.

6.3 Carbohydrates [i](#)

There are no carbohydrates in this entry.

6.4 Ligands [i](#)

In the following table, the Atoms column lists the number of modelled atoms in the group and the number defined in the chemical component dictionary. LLDF column lists the quality of electron

density of the group with respect to its neighbouring residues in protein, DNA or RNA chains. The B-factors column lists the minimum, median, 95th percentile and maximum values of B factors of atoms in the group. The column labelled 'Q< 0.9' lists the number of atoms with occupancy less than 0.9.

Mol	Type	Chain	Res	Atoms	RSCC	RSR	LLDF	B-factors(Å ²)	Q<0.9
5	C15	A	1503	22/22	0.84	0.19	1.90	27,49,69,70	0
3	RAS	A	601	13/13	0.96	0.10	0.45	10,15,18,18	0
2	FAD	B	600	53/53	0.99	0.13	0.42	3,9,12,13	0
2	FAD	A	600	53/53	0.99	0.09	-0.04	4,9,13,14	0
3	RAS	B	601	13/13	0.96	0.11	-0.40	13,16,18,18	0
4	XCG	A	602	14/14	0.98	0.08	-0.51	19,21,23,24	0
4	XCG	B	602	14/14	0.96	0.08	-0.56	17,18,21,21	0

6.5 Other polymers ⓘ

There are no such residues in this entry.