



# Full wwPDB X-ray Structure Validation Report ⓘ

Sep 18, 2017 – 08:22 AM EDT

PDB ID : 4XG1  
Title : Psychromonas ingrahamii diaminopimelate decarboxylase with LLP  
Authors : Peverelli, M.G.; Wubben, J.M.; Panjekar, S.; Perugini, M.A.  
Deposited on : unknown  
Resolution : 2.50 Å(reported)

This is a Full wwPDB X-ray Structure Validation Report for a publicly released PDB entry.

We welcome your comments at [validation@mail.wwpdb.org](mailto:validation@mail.wwpdb.org)

A user guide is available at

<http://wwpdb.org/validation/2016/XrayValidationReportHelp>

with specific help available everywhere you see the ⓘ symbol.

---

The following versions of software and data (see [references ⓘ](#)) were used in the production of this report:

MolProbity : 4.02b-467  
Mogul : 1.7.2 (RC1), CSD as538be (2017)  
Xtriage (Phenix) : 1.9-1692  
EDS : rb-20029824  
Percentile statistics : 20161228.v01 (using entries in the PDB archive December 28th 2016)  
Refmac : 5.8.0135  
CCP4 : 6.5.0  
Ideal geometry (proteins) : Engh & Huber (2001)  
Ideal geometry (DNA, RNA) : Parkinson et al. (1996)  
Validation Pipeline (wwPDB-VP) : rb-20029824

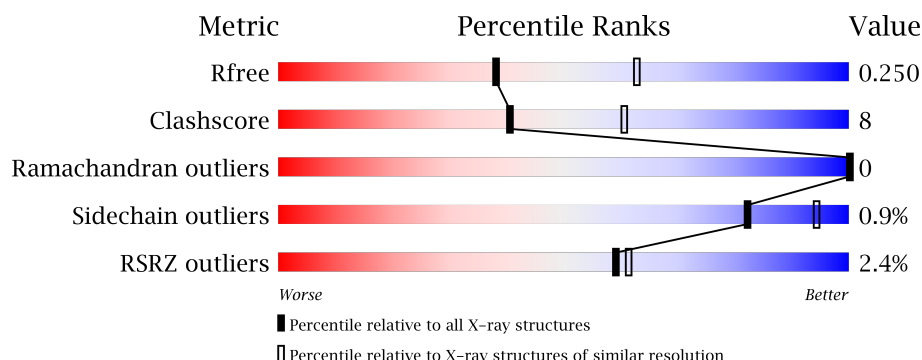
# 1 Overall quality at a glance

The following experimental techniques were used to determine the structure:

## *X-RAY DIFFRACTION*

The reported resolution of this entry is 2.50 Å.

Percentile scores (ranging between 0-100) for global validation metrics of the entry are shown in the following graphic. The table shows the number of entries on which the scores are based.



Metric	Whole archive (#Entries)	Similar resolution (#Entries, resolution range(Å))
$R_{free}$	100719	3846 (2.50-2.50)
Clashscore	112137	4554 (2.50-2.50)
Ramachandran outliers	110173	4463 (2.50-2.50)
Sidechain outliers	110143	4465 (2.50-2.50)
RSRZ outliers	101464	3876 (2.50-2.50)

The table below summarises the geometric issues observed across the polymeric chains and their fit to the electron density. The red, orange, yellow and green segments on the lower bar indicate the fraction of residues that contain outliers for  $\geq 3$ , 2, 1 and 0 types of geometric quality criteria. A grey segment represents the fraction of residues that are not modelled. The numeric value for each fraction is indicated below the corresponding segment, with a dot representing fractions  $\leq 5\%$ . The upper red bar (where present) indicates the fraction of residues that have poor fit to the electron density. The numeric value is given above the bar.

Mol	Chain	Length	Quality of chain
1	A	427	<div> <div>4%</div> <div> <div></div> <div>77%</div> <div>14%</div> <div>• 8%</div> </div> </div>
1	B	427	<div> <div>%</div> <div> <div></div> <div>85%</div> <div>12%</div> <div>• •</div> </div> </div>
1	C	427	<div> <div>%</div> <div> <div></div> <div>82%</div> <div>13%</div> <div>• •</div> </div> </div>
1	D	427	<div> <div>2%</div> <div> <div></div> <div>80%</div> <div>13%</div> <div>• 6%</div> </div> </div>

The following table lists non-polymeric compounds, carbohydrate monomers and non-standard residues in protein, DNA, RNA chains that are outliers for geometric or electron-density-fit crite-

ria:

Mol	Type	Chain	Res	Chirality	Geometry	Clashes	Electron density
2	SCN	A	501	-	-	-	X
2	SCN	A	502	-	-	-	X
2	SCN	A	503	-	-	-	X
2	SCN	A	504	-	-	-	X
2	SCN	B	501	-	-	-	X
2	SCN	C	501	-	-	X	X
2	SCN	C	502	-	-	X	X
4	TME	B	507	-	-	-	X

## 2 Entry composition

There are 6 unique types of molecules in this entry. The entry contains 13006 atoms, of which 0 are hydrogens and 0 are deuteriums.

In the tables below, the ZeroOcc column contains the number of atoms modelled with zero occupancy, the AltConf column contains the number of residues with at least one atom in alternate conformation and the Trace column contains the number of residues modelled with at most 2 atoms.

- Molecule 1 is a protein called Diaminopimelate decarboxylase.

Mol	Chain	Residues	Atoms					ZeroOcc	AltConf	Trace
1	A	393	Total	C	N	O	S	0	0	0
			2998	1915	511	559	13			
1	B	418	Total	C	N	O	S	0	0	0
			3216	2050	545	607	14			
1	C	411	Total	C	N	O	S	0	0	0
			3173	2020	541	598	14			
1	D	403	Total	C	N	O	S	0	0	0
			3080	1964	527	575	14			

There are 24 discrepancies between the modelled and reference sequences:

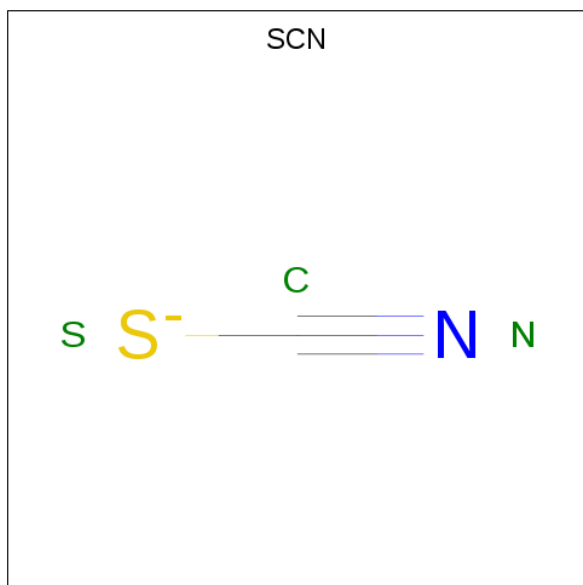
Chain	Residue	Modelled	Actual	Comment	Reference
A	422	HIS	-	expression tag	UNP A1SR00
A	423	HIS	-	expression tag	UNP A1SR00
A	424	HIS	-	expression tag	UNP A1SR00
A	425	HIS	-	expression tag	UNP A1SR00
A	426	HIS	-	expression tag	UNP A1SR00
A	427	HIS	-	expression tag	UNP A1SR00
B	422	HIS	-	expression tag	UNP A1SR00
B	423	HIS	-	expression tag	UNP A1SR00
B	424	HIS	-	expression tag	UNP A1SR00
B	425	HIS	-	expression tag	UNP A1SR00
B	426	HIS	-	expression tag	UNP A1SR00
B	427	HIS	-	expression tag	UNP A1SR00
C	422	HIS	-	expression tag	UNP A1SR00
C	423	HIS	-	expression tag	UNP A1SR00
C	424	HIS	-	expression tag	UNP A1SR00
C	425	HIS	-	expression tag	UNP A1SR00
C	426	HIS	-	expression tag	UNP A1SR00
C	427	HIS	-	expression tag	UNP A1SR00
D	422	HIS	-	expression tag	UNP A1SR00
D	423	HIS	-	expression tag	UNP A1SR00
D	424	HIS	-	expression tag	UNP A1SR00

*Continued on next page...*

Continued from previous page...

Chain	Residue	Modelled	Actual	Comment	Reference
D	425	HIS	-	expression tag	UNP A1SR00
D	426	HIS	-	expression tag	UNP A1SR00
D	427	HIS	-	expression tag	UNP A1SR00

- Molecule 2 is THIOCYANATE ION (three-letter code: SCN) (formula: CNS).

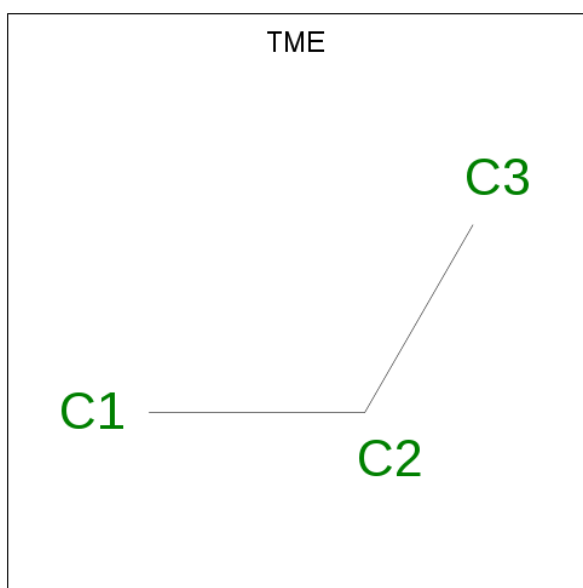


Mol	Chain	Residues	Atoms				ZeroOcc	AltConf
2	A	1	Total	C	N	S	0	0
			3	1	1	1		
2	A	1	Total	C	N	S	0	0
			3	1	1	1		
2	A	1	Total	C	N	S	0	0
			3	1	1	1		
2	A	1	Total	C	N	S	0	0
			3	1	1	1		
2	B	1	Total	C	N	S	0	0
			3	1	1	1		
2	B	1	Total	C	N	S	0	0
			3	1	1	1		
2	C	1	Total	C	N	S	0	0
			3	1	1	1		
2	C	1	Total	C	N	S	0	0
			3	1	1	1		
2	D	1	Total	C	N	S	0	0
			3	1	1	1		

- Molecule 3 is POTASSIUM ION (three-letter code: K) (formula: K).

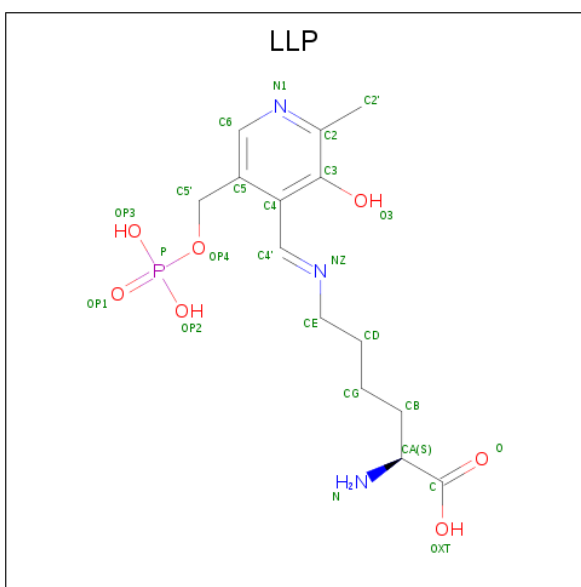
Mol	Chain	Residues	Atoms	ZeroOcc	AltConf
3	B	2	Total K 2 2	0	0
3	A	2	Total K 2 2	0	0
3	D	1	Total K 1 1	0	0
3	C	1	Total K 1 1	0	0

- Molecule 4 is PROPANE (three-letter code: TME) (formula:  $C_3H_8$ ).



Mol	Chain	Residues	Atoms	ZeroOcc	AltConf
4	A	1	Total C 3 3	0	0
4	B	1	Total C 3 3	0	0
4	B	1	Total C 3 3	0	0
4	B	1	Total C 3 3	0	0
4	D	1	Total C 3 3	0	0

- Molecule 5 is (2S)-2-amino-6-[[3-hydroxy-2-methyl-5-(phosphonooxymethyl)pyridin-4-yl]methylideneamino]hexanoic acid (three-letter code: LLP) (formula:  $C_{14}H_{22}N_3O_7P$ ).



Mol	Chain	Residues	Atoms					ZeroOcc	AltConf
5	A	1	Total	C	N	O	P	0	0
			25	14	3	7	1		
5	B	1	Total	C	N	O	P	0	0
			25	14	3	7	1		
5	C	1	Total	C	N	O	P	0	0
			25	14	3	7	1		
5	D	1	Total	C	N	O	P	0	0
			25	14	3	7	1		

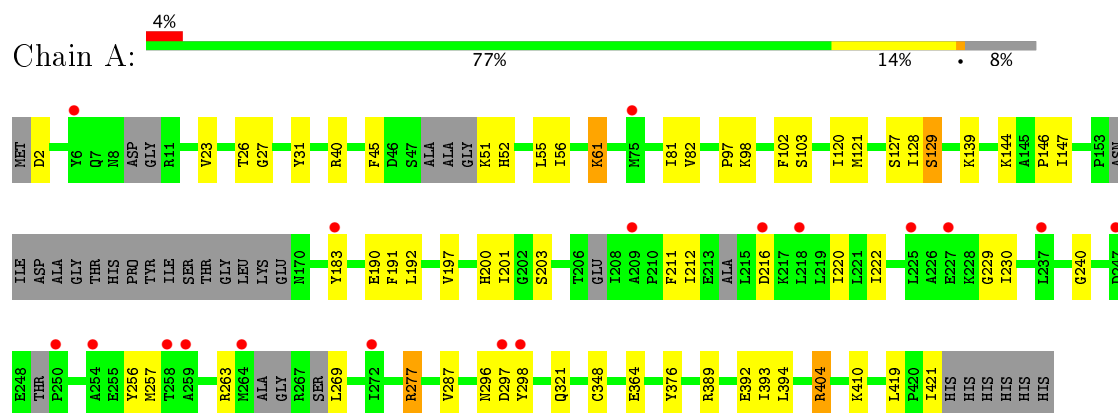
- Molecule 6 is water.

Mol	Chain	Residues	Atoms		ZeroOcc	AltConf
6	A	103	Total	O	0	0
			103	103		
6	B	106	Total	O	0	0
			106	106		
6	C	117	Total	O	0	0
			117	117		
6	D	65	Total	O	0	0
			65	65		

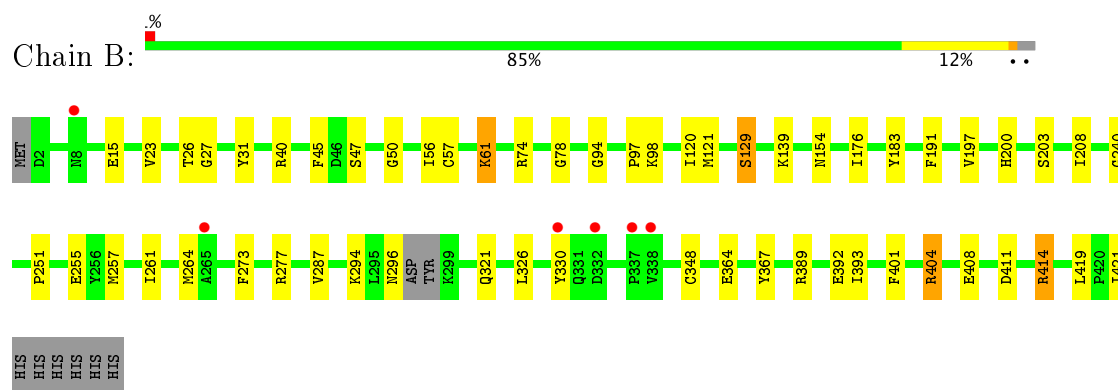
### 3 Residue-property plots [i](#)

These plots are drawn for all protein, RNA and DNA chains in the entry. The first graphic for a chain summarises the proportions of the various outlier classes displayed in the second graphic. The second graphic shows the sequence view annotated by issues in geometry and electron density. Residues are color-coded according to the number of geometric quality criteria for which they contain at least one outlier: green = 0, yellow = 1, orange = 2 and red = 3 or more. A red dot above a residue indicates a poor fit to the electron density ( $RSRZ > 2$ ). Stretches of 2 or more consecutive residues without any outlier are shown as a green connector. Residues present in the sample, but not in the model, are shown in grey.

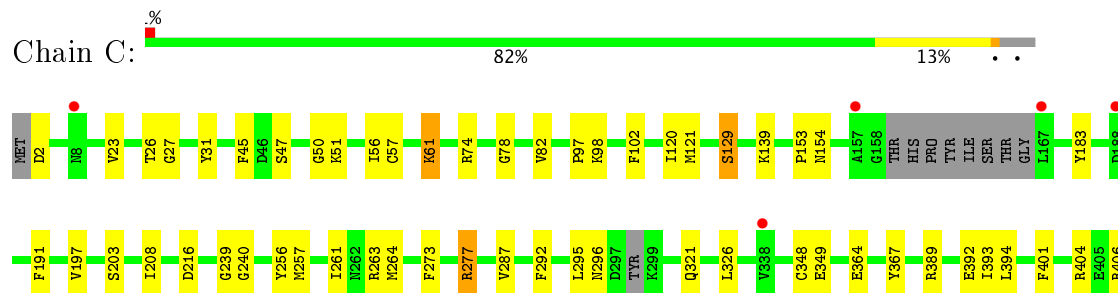
#### • Molecule 1: Diaminopimelate decarboxylase



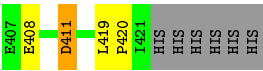
#### • Molecule 1: Diaminopimelate decarboxylase



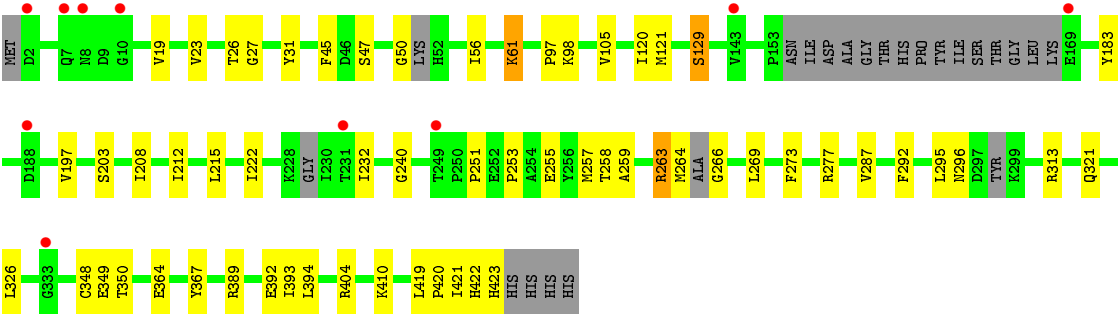
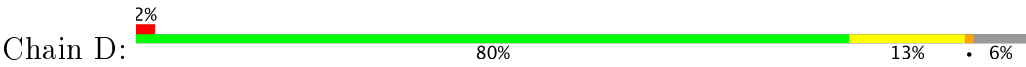
#### • Molecule 1: Diaminopimelate decarboxylase







● Molecule 1: Diaminopimelate decarboxylase



## 4 Data and refinement statistics

Property	Value	Source
Space group	P 1 21 1	Depositor
Cell constants a, b, c, $\alpha$ , $\beta$ , $\gamma$	89.96Å 103.13Å 93.59Å 90.00° 94.77° 90.00°	Depositor
Resolution (Å)	19.85 – 2.50 19.85 – 2.50	Depositor EDS
% Data completeness (in resolution range)	99.5 (19.85-2.50) 99.7 (19.85-2.50)	Depositor EDS
$R_{merge}$	0.07	Depositor
$R_{sym}$	0.08	Depositor
$\langle I/\sigma(I) \rangle$ <sup>1</sup>	7.51 (at 2.50Å)	Xtriage
Refinement program	REFMAC 5.8.0073	Depositor
R, $R_{free}$	0.211 , 0.246 0.215 , 0.250	Depositor DCC
$R_{free}$ test set	1014 reflections (1.76%)	DCC
Wilson B-factor (Å <sup>2</sup> )	25.3	Xtriage
Anisotropy	0.021	Xtriage
Bulk solvent $k_{sol}$ (e/Å <sup>3</sup> ), $B_{sol}$ (Å <sup>2</sup> )	0.31 , 42.1	EDS
L-test for twinning <sup>2</sup>	$\langle  L  \rangle = 0.49$ , $\langle L^2 \rangle = 0.32$	Xtriage
Estimated twinning fraction	0.017 for l,-k,h	Xtriage
$F_o, F_c$ correlation	0.92	EDS
Total number of atoms	13006	wwPDB-VP
Average B, all atoms (Å <sup>2</sup> )	31.0	wwPDB-VP

Xtriage's analysis on translational NCS is as follows: *The largest off-origin peak in the Patterson function is 4.27% of the height of the origin peak. No significant pseudotranslation is detected.*

<sup>1</sup>Intensities estimated from amplitudes.

<sup>2</sup>Theoretical values of  $\langle |L| \rangle$ ,  $\langle L^2 \rangle$  for acentric reflections are 0.5, 0.333 respectively for untwinned datasets, and 0.375, 0.2 for perfectly twinned datasets.

## 5 Model quality

### 5.1 Standard geometry

Bond lengths and bond angles in the following residue types are not validated in this section: K, LLP, SCN, TME

The Z score for a bond length (or angle) is the number of standard deviations the observed value is removed from the expected value. A bond length (or angle) with  $|Z| > 5$  is considered an outlier worth inspection. RMSZ is the root-mean-square of all Z scores of the bond lengths (or angles).

Mol	Chain	Bond lengths		Bond angles	
		RMSZ	# $ Z  > 5$	RMSZ	# $ Z  > 5$
1	A	0.65	0/3042	0.77	4/4101 (0.1%)
1	B	0.68	0/3275	0.81	6/4437 (0.1%)
1	C	0.62	0/3228	0.77	5/4367 (0.1%)
1	D	0.58	0/3133	0.75	3/4240 (0.1%)
All	All	0.63	0/12678	0.77	18/17145 (0.1%)

There are no bond length outliers.

All (18) bond angle outliers are listed below:

Mol	Chain	Res	Type	Atoms	Z	Observed(°)	Ideal(°)
1	A	277	ARG	NE-CZ-NH1	-8.50	116.05	120.30
1	C	277	ARG	NE-CZ-NH1	-7.17	116.71	120.30
1	B	414	ARG	NE-CZ-NH2	-7.13	116.73	120.30
1	A	277	ARG	NE-CZ-NH2	7.00	123.80	120.30
1	B	414	ARG	NE-CZ-NH1	6.75	123.67	120.30
1	B	389	ARG	NE-CZ-NH1	-6.25	117.17	120.30
1	A	404	ARG	NE-CZ-NH1	6.15	123.37	120.30
1	B	277	ARG	NE-CZ-NH1	6.05	123.33	120.30
1	C	404	ARG	NE-CZ-NH1	5.93	123.27	120.30
1	D	389	ARG	NE-CZ-NH1	-5.85	117.37	120.30
1	B	404	ARG	NE-CZ-NH1	5.65	123.13	120.30
1	B	389	ARG	NE-CZ-NH2	5.55	123.07	120.30
1	D	277	ARG	NE-CZ-NH1	5.54	123.07	120.30
1	D	263	ARG	NE-CZ-NH2	-5.44	117.58	120.30
1	C	389	ARG	NE-CZ-NH1	-5.38	117.61	120.30
1	C	277	ARG	NE-CZ-NH2	5.38	122.99	120.30
1	C	411	ASP	CB-CG-OD1	-5.23	113.60	118.30
1	A	389	ARG	NE-CZ-NH2	5.06	122.83	120.30

There are no chirality outliers.

There are no planarity outliers.

## 5.2 Too-close contacts

In the following table, the Non-H and H(model) columns list the number of non-hydrogen atoms and hydrogen atoms in the chain respectively. The H(added) column lists the number of hydrogen atoms added and optimized by MolProbity. The Clashes column lists the number of clashes within the asymmetric unit, whereas Symm-Clashes lists symmetry related clashes.

Mol	Chain	Non-H	H(model)	H(added)	Clashes	Symm-Clashes
1	A	2998	0	2970	70	1
1	B	3216	0	3221	48	0
1	C	3173	0	3187	57	0
1	D	3080	0	3061	66	1
2	A	12	0	0	0	0
2	B	6	0	0	1	0
2	C	6	0	0	4	0
2	D	3	0	0	1	0
3	A	2	0	0	0	0
3	B	2	0	0	0	0
3	C	1	0	0	0	0
3	D	1	0	0	0	0
4	A	3	0	8	3	0
4	B	9	0	24	2	0
4	D	3	0	8	0	0
5	A	25	0	19	1	0
5	B	25	0	18	0	0
5	C	25	0	19	2	0
5	D	25	0	19	6	0
6	A	103	0	0	8	0
6	B	106	0	0	4	0
6	C	117	0	0	3	0
6	D	65	0	0	1	0
All	All	13006	0	12554	206	1

The all-atom clashscore is defined as the number of clashes found per 1000 atoms (including hydrogen atoms). The all-atom clashscore for this structure is 8.

All (206) close contacts within the same asymmetric unit are listed below, sorted by their clash magnitude.

Atom-1	Atom-2	Interatomic distance (Å)	Clash overlap (Å)
1:A:211:PHE:HE2	1:A:256:TYR:CE1	1.57	1.21

*Continued on next page...*

*Continued from previous page...*

Atom-1	Atom-2	Interatomic distance (Å)	Clash overlap (Å)
1:A:61:LYS:NZ	1:B:348:CYS:SG	2.12	1.20
1:A:211:PHE:CE2	1:A:256:TYR:CE1	2.31	1.18
1:C:61:LYS:NZ	1:D:348:CYS:SG	2.16	1.18
1:A:348:CYS:SG	1:B:61:LYS:NZ	2.20	1.13
1:A:61:LYS:CE	1:B:348:CYS:SG	2.38	1.11
1:C:348:CYS:SG	1:D:61:LYS:NZ	2.21	1.11
1:A:348:CYS:SG	1:B:61:LYS:CE	2.42	1.07
1:C:61:LYS:CE	1:D:348:CYS:SG	2.43	1.07
1:A:45:PHE:O	1:A:257:MET:CE	2.03	1.06
1:C:348:CYS:SG	1:D:61:LYS:CE	2.44	1.05
1:A:211:PHE:CE2	1:A:256:TYR:HE1	1.72	1.04
1:C:295:LEU:O	1:C:296:ASN:ND2	2.02	0.92
1:A:211:PHE:CE2	1:A:256:TYR:CD1	2.61	0.88
1:A:211:PHE:HE2	1:A:256:TYR:CD1	1.92	0.88
1:A:229:GLY:C	1:A:230:ILE:CA	2.44	0.86
1:A:45:PHE:O	1:A:257:MET:HE2	1.75	0.85
2:C:501:SCN:S	5:D:504:LLP:HE2	2.18	0.84
1:A:222:ILE:HD13	1:A:269:LEU:HD11	1.62	0.80
1:D:264:MET:O	1:D:266:GLY:N	2.16	0.79
1:A:211:PHE:CD2	1:A:256:TYR:HE1	2.02	0.78
1:A:211:PHE:CD2	1:A:256:TYR:CE1	2.73	0.76
1:C:257:MET:O	1:C:261:ILE:HG12	1.85	0.76
1:D:255:GLU:O	1:D:258:THR:HG22	1.86	0.75
1:B:154:ASN:HD22	1:B:176:ILE:HG21	1.51	0.74
1:D:222:ILE:HD13	1:D:269:LEU:CD2	2.19	0.72
1:A:348:CYS:SG	1:B:61:LYS:HE3	2.29	0.72
1:A:61:LYS:HE3	1:B:348:CYS:SG	2.29	0.72
1:A:45:PHE:O	1:A:257:MET:HE1	1.91	0.71
1:D:203:SER:OG	5:D:504:LLP:OP3	2.07	0.71
1:C:239:GLY:HA2	2:C:502:SCN:C	2.21	0.71
1:A:200:HIS:HA	6:A:683:HOH:O	1.91	0.70
1:C:348:CYS:SG	1:D:61:LYS:HE3	2.32	0.70
1:C:74:ARG:HH12	1:D:421:ILE:HB	1.56	0.69
1:C:61:LYS:HE3	1:D:348:CYS:SG	2.33	0.69
1:A:216:ASP:O	1:A:220:ILE:HD13	1.93	0.68
1:D:258:THR:HG23	1:D:259:ALA:N	2.08	0.68
1:D:419:LEU:HB3	1:D:421:ILE:HD11	1.75	0.68
1:A:212:ILE:HG23	1:A:263:ARG:HD2	1.76	0.67
1:A:201:ILE:N	6:A:683:HOH:O	1.92	0.67
1:A:147:ILE:HD11	1:A:192:LEU:HD22	1.77	0.67
1:B:15:GLU:OE1	6:B:619:HOH:O	2.13	0.66

*Continued on next page...*

*Continued from previous page...*

Atom-1	Atom-2	Interatomic distance (Å)	Clash overlap (Å)
1:C:295:LEU:C	1:C:296:ASN:HD22	1.98	0.66
6:A:674:HOH:O	1:C:408:GLU:HG2	1.95	0.65
1:D:419:LEU:HB3	1:D:421:ILE:CD1	2.26	0.65
1:C:411:ASP:OD2	6:C:697:HOH:O	2.15	0.65
1:D:45:PHE:HB3	1:D:56:ILE:HD13	1.79	0.64
1:B:26:THR:HG23	1:B:27:GLY:O	1.98	0.64
1:A:26:THR:HG23	1:A:27:GLY:O	1.98	0.64
1:C:26:THR:HG23	1:C:27:GLY:O	1.98	0.64
1:A:128:ILE:H	4:A:507:TME:H32	1.63	0.64
1:D:26:THR:HG23	1:D:27:GLY:O	1.98	0.63
1:D:222:ILE:HD13	1:D:269:LEU:HD22	1.81	0.62
1:A:61:LYS:HE2	1:B:348:CYS:SG	2.38	0.61
1:A:190:GLU:CD	1:A:190:GLU:H	2.04	0.61
1:A:23:VAL:HA	1:A:26:THR:HG22	1.83	0.61
1:A:51:LYS:O	1:A:52:HIS:C	2.40	0.61
1:B:45:PHE:HB3	1:B:56:ILE:HD13	1.84	0.60
1:A:147:ILE:HD12	1:A:192:LEU:HB3	1.83	0.60
1:C:23:VAL:HA	1:C:26:THR:HG22	1.84	0.60
1:C:45:PHE:HB3	1:C:56:ILE:HD13	1.85	0.59
1:A:45:PHE:HB3	1:A:56:ILE:HD13	1.83	0.59
1:A:212:ILE:HG23	1:A:263:ARG:CD	2.32	0.59
1:B:411:ASP:HA	1:B:414:ARG:HG3	1.83	0.59
1:C:277:ARG:HD2	6:C:658:HOH:O	2.01	0.59
1:B:23:VAL:HA	1:B:26:THR:HG22	1.83	0.59
1:A:82:VAL:C	1:A:102:PHE:HE1	2.07	0.58
1:C:239:GLY:HA2	2:C:502:SCN:S	2.43	0.58
1:D:23:VAL:HA	1:D:26:THR:HG22	1.85	0.57
1:C:61:LYS:HE2	1:D:348:CYS:SG	2.41	0.55
1:B:255:GLU:OE1	6:B:691:HOH:O	2.18	0.55
1:C:348:CYS:SG	1:D:61:LYS:HE2	2.42	0.55
1:C:74:ARG:NH1	1:D:421:ILE:HB	2.20	0.55
1:D:45:PHE:HB3	1:D:56:ILE:CD1	2.36	0.55
1:A:127:SER:HB2	4:A:507:TME:H33	1.88	0.54
1:D:258:THR:CG2	1:D:259:ALA:N	2.69	0.54
1:C:394:LEU:HD23	1:D:419:LEU:HD13	1.89	0.54
1:C:277:ARG:NH1	5:C:504:LLP:OXT	2.30	0.54
1:A:348:CYS:SG	1:B:61:LYS:HE2	2.41	0.54
1:B:94:GLY:HA3	1:D:420:PRO:HB2	1.89	0.54
1:A:55:LEU:HA	6:A:688:HOH:O	2.08	0.54
1:A:296:ASN:OD1	1:A:298:TYR:N	2.29	0.54
1:A:147:ILE:CD1	1:A:192:LEU:HD22	2.36	0.53

*Continued on next page...*

*Continued from previous page...*

Atom-1	Atom-2	Interatomic distance (Å)	Clash overlap (Å)
1:B:97:PRO:O	1:B:120:ILE:HA	2.09	0.53
1:B:408:GLU:OE2	1:D:410:LYS:NZ	2.38	0.53
1:D:232:ILE:O	1:D:269:LEU:CD1	2.57	0.53
1:C:82:VAL:C	1:C:102:PHE:HE1	2.11	0.53
1:D:45:PHE:CE1	1:D:253:PRO:HB3	2.44	0.52
1:C:129:SER:OG	1:D:364:GLU:OE2	2.15	0.52
1:B:330:TYR:OH	2:B:502:SCN:S	2.63	0.51
1:D:97:PRO:O	1:D:120:ILE:HA	2.10	0.51
1:B:208:ILE:H	4:B:505:TME:C3	2.23	0.51
1:D:105:VAL:HG22	6:D:634:HOH:O	2.10	0.51
1:C:2:ASP:OD1	6:C:609:HOH:O	2.19	0.51
1:A:2:ASP:N	1:A:40:ARG:HH22	2.08	0.51
1:C:97:PRO:O	1:C:120:ILE:HA	2.10	0.51
1:D:212:ILE:CG2	1:D:263:ARG:CZ	2.89	0.51
5:C:504:LLP:N	1:D:349:GLU:OE2	2.44	0.51
1:A:376:TYR:CE1	5:A:508:LLP:HG3	2.45	0.50
1:C:349:GLU:HG2	5:D:504:LLP:HD3	1.93	0.50
1:A:55:LEU:HD12	6:A:688:HOH:O	2.09	0.50
1:D:208:ILE:HG13	1:D:251:PRO:CG	2.41	0.50
1:A:211:PHE:CD2	1:A:256:TYR:CD1	2.99	0.50
1:C:216:ASP:OD1	1:C:263:ARG:HD2	2.12	0.50
1:A:129:SER:OG	1:B:364:GLU:OE2	2.18	0.50
1:D:47:SER:O	1:D:50:GLY:N	2.45	0.50
1:C:26:THR:HG21	1:C:393:ILE:HD11	1.94	0.49
1:A:410:LYS:NZ	1:C:406:ARG:O	2.45	0.49
1:D:183:TYR:OH	1:D:197:VAL:HG22	2.12	0.49
1:D:26:THR:HG21	1:D:393:ILE:HD11	1.93	0.49
1:A:103:SER:HB3	6:A:614:HOH:O	2.12	0.49
1:C:47:SER:O	1:C:50:GLY:N	2.46	0.49
1:A:97:PRO:O	1:A:120:ILE:HA	2.12	0.49
1:D:212:ILE:CG2	1:D:263:ARG:NH1	2.76	0.49
1:A:421:ILE:HD13	1:B:74:ARG:CZ	2.43	0.49
1:B:183:TYR:OH	1:B:197:VAL:HG22	2.13	0.48
1:A:56:ILE:N	6:A:688:HOH:O	2.06	0.48
1:B:47:SER:O	1:B:50:GLY:N	2.45	0.48
1:A:183:TYR:OH	1:A:197:VAL:HG22	2.12	0.48
1:C:45:PHE:HB3	1:C:56:ILE:CD1	2.43	0.48
1:C:216:ASP:OD2	1:C:263:ARG:NH1	2.48	0.47
1:D:350:THR:HG23	2:D:501:SCN:N	2.28	0.47
1:B:45:PHE:HB3	1:B:56:ILE:CD1	2.43	0.47
1:A:45:PHE:HB3	1:A:56:ILE:CD1	2.43	0.47

*Continued on next page...*

*Continued from previous page...*

Atom-1	Atom-2	Interatomic distance (Å)	Clash overlap (Å)
1:C:183:TYR:OH	1:C:197:VAL:HG22	2.15	0.47
1:D:232:ILE:O	1:D:269:LEU:HD11	2.14	0.47
1:D:326:LEU:HD22	1:D:367:TYR:HB2	1.97	0.47
1:A:203:SER:OG	1:A:277:ARG:NH2	2.48	0.46
1:A:2:ASP:N	1:A:40:ARG:NH2	2.63	0.46
1:C:129:SER:HB3	1:D:292:PHE:CD1	2.49	0.46
1:A:190:GLU:HG2	1:A:191:PHE:CD2	2.50	0.46
1:B:26:THR:HG21	1:B:393:ILE:HD11	1.97	0.46
1:B:139:LYS:HG3	1:B:191:PHE:CE2	2.51	0.46
1:A:26:THR:HG21	1:A:393:ILE:HD11	1.96	0.46
1:C:203:SER:OG	1:C:277:ARG:NH2	2.48	0.46
1:D:215:LEU:HD23	1:D:263:ARG:HG3	1.98	0.46
1:C:349:GLU:CG	5:D:504:LLP:HD3	2.45	0.46
1:D:258:THR:CG2	1:D:259:ALA:H	2.29	0.46
1:D:212:ILE:HG21	1:D:263:ARG:CZ	2.47	0.45
1:A:394:LEU:HD23	1:B:419:LEU:HD13	1.98	0.45
1:C:326:LEU:HD22	1:C:367:TYR:HB2	1.97	0.45
1:D:23:VAL:HG11	1:D:287:VAL:HG11	1.98	0.45
1:B:208:ILE:HG13	1:B:251:PRO:CG	2.47	0.45
1:A:296:ASN:OD1	1:A:297:ASP:N	2.50	0.44
1:C:31:TYR:HB2	1:C:392:GLU:HG2	1.98	0.44
1:A:31:TYR:HB2	1:A:392:GLU:HG2	1.99	0.44
1:D:232:ILE:HG22	1:D:269:LEU:HD11	1.99	0.44
1:D:257:MET:SD	1:D:273:PHE:CZ	3.10	0.44
1:A:222:ILE:CD1	1:A:269:LEU:HD11	2.40	0.44
1:D:203:SER:HA	1:D:240:GLY:HA2	1.98	0.44
1:D:313:ARG:HH21	5:D:504:LLP:HN2	1.64	0.44
1:A:419:LEU:HD11	1:B:401:PHE:HB3	2.00	0.44
1:A:146:PRO:C	1:A:147:ILE:HG13	2.38	0.44
1:A:23:VAL:HG11	1:A:287:VAL:HG11	1.99	0.44
1:C:364:GLU:OE2	1:D:129:SER:OG	2.27	0.44
1:C:419:LEU:HG	1:C:420:PRO:HD2	1.99	0.44
1:C:261:ILE:O	1:C:264:MET:HB2	2.18	0.43
1:B:255:GLU:CD	6:B:691:HOH:O	2.55	0.43
1:C:23:VAL:HG11	1:C:287:VAL:HG11	2.00	0.43
1:A:81:ILE:HG13	1:A:102:PHE:CD1	2.53	0.43
1:D:222:ILE:HD13	1:D:269:LEU:HD21	1.98	0.43
2:C:501:SCN:S	5:D:504:LLP:CE	3.01	0.43
1:A:364:GLU:OE2	1:B:129:SER:OG	2.24	0.43
1:B:23:VAL:HG11	1:B:287:VAL:HG11	2.00	0.43
1:A:61:LYS:NZ	1:B:348:CYS:CB	2.81	0.43

*Continued on next page...*



*Continued from previous page...*

Atom-1	Atom-2	Interatomic distance (Å)	Clash overlap (Å)
1:B:392:GLU:HB2	1:B:404:ARG:HB3	2.01	0.43
1:D:422:HIS:O	1:D:423:HIS:HB2	2.19	0.43
1:A:203:SER:HA	1:A:240:GLY:HA2	2.00	0.42
1:C:153:PRO:O	1:C:154:ASN:HB2	2.19	0.42
1:B:57:CYS:HA	1:B:78:GLY:C	2.39	0.42
1:C:74:ARG:NH1	1:D:421:ILE:HD13	2.34	0.42
1:A:98:LYS:O	1:A:121:MET:HB2	2.20	0.42
1:B:200:HIS:HA	6:B:627:HOH:O	2.18	0.42
1:C:292:PHE:CD1	1:D:129:SER:HB3	2.55	0.42
1:C:208:ILE:HD13	1:C:256:TYR:HA	2.01	0.42
1:C:57:CYS:HA	1:C:78:GLY:C	2.40	0.42
1:D:31:TYR:HB2	1:D:392:GLU:HG2	2.01	0.42
1:B:261:ILE:O	1:B:264:MET:HB2	2.19	0.42
4:A:507:TME:H33	1:B:294:LYS:HG2	2.02	0.42
1:B:31:TYR:HB2	1:B:392:GLU:HG2	2.01	0.42
1:B:98:LYS:O	1:B:121:MET:HB2	2.19	0.42
1:B:296:ASN:C	1:B:296:ASN:OD1	2.57	0.42
1:A:103:SER:CB	6:A:614:HOH:O	2.68	0.42
1:B:326:LEU:HD22	1:B:367:TYR:HB2	2.01	0.42
1:C:419:LEU:HD13	1:D:394:LEU:HD23	2.01	0.41
1:D:98:LYS:O	1:D:121:MET:HB2	2.19	0.41
1:B:203:SER:HA	1:B:240:GLY:HA2	2.02	0.41
1:C:98:LYS:O	1:C:121:MET:HB2	2.21	0.41
1:D:45:PHE:CD1	1:D:253:PRO:HB3	2.56	0.41
1:B:421:ILE:HG13	1:B:421:ILE:O	2.20	0.41
1:C:139:LYS:HG3	1:C:191:PHE:CE2	2.55	0.41
1:B:40:ARG:HB2	4:B:507:TME:H31	2.02	0.41
1:B:408:GLU:OE2	1:D:410:LYS:CE	2.69	0.41
1:A:392:GLU:HB2	1:A:404:ARG:HB3	2.03	0.41
1:C:401:PHE:CD2	1:D:419:LEU:HD11	2.56	0.41
1:C:74:ARG:CZ	1:D:421:ILE:HD13	2.51	0.41
1:D:392:GLU:HB2	1:D:404:ARG:HB3	2.04	0.40
1:A:139:LYS:HG3	1:A:191:PHE:CE2	2.56	0.40
1:B:257:MET:SD	1:B:273:PHE:CZ	3.14	0.40
1:D:222:ILE:CD1	1:D:269:LEU:CD2	2.95	0.40
1:D:295:LEU:O	1:D:296:ASN:ND2	2.53	0.40
1:D:19:VAL:HB	1:D:326:LEU:HD11	2.03	0.40
1:A:144:LYS:HE2	1:A:190:GLU:O	2.22	0.40
1:C:203:SER:HA	1:C:240:GLY:HA2	2.03	0.40
1:C:257:MET:SD	1:C:273:PHE:CZ	3.15	0.40
1:C:51:LYS:HA	1:C:51:LYS:HD3	1.97	0.40

All (1) symmetry-related close contacts are listed below. The label for Atom-2 includes the symmetry operator and encoded unit-cell translations to be applied.

Atom-1	Atom-2	Interatomic distance (Å)	Clash overlap (Å)
1:A:139:LYS:O	1:D:263:ARG:NH2[2_655]	1.85	0.35

## 5.3 Torsion angles [i](#)

### 5.3.1 Protein backbone [i](#)

In the following table, the Percentiles column shows the percent Ramachandran outliers of the chain as a percentile score with respect to all X-ray entries followed by that with respect to entries of similar resolution.

The Analysed column shows the number of residues for which the backbone conformation was analysed, and the total number of residues.

Mol	Chain	Analysed	Favoured	Allowed	Outliers	Percentiles	
1	A	374/427 (88%)	362 (97%)	12 (3%)	0	100	100
1	B	414/427 (97%)	399 (96%)	15 (4%)	0	100	100
1	C	405/427 (95%)	390 (96%)	15 (4%)	0	100	100
1	D	391/427 (92%)	376 (96%)	15 (4%)	0	100	100
All	All	1584/1708 (93%)	1527 (96%)	57 (4%)	0	100	100

There are no Ramachandran outliers to report.

### 5.3.2 Protein sidechains [i](#)

In the following table, the Percentiles column shows the percent sidechain outliers of the chain as a percentile score with respect to all X-ray entries followed by that with respect to entries of similar resolution.

The Analysed column shows the number of residues for which the sidechain conformation was analysed, and the total number of residues.

Mol	Chain	Analysed	Rotameric	Outliers	Percentiles	
1	A	311/355 (88%)	308 (99%)	3 (1%)	80	93
1	B	340/355 (96%)	337 (99%)	3 (1%)	82	94
1	C	337/355 (95%)	334 (99%)	3 (1%)	82	94
1	D	321/355 (90%)	318 (99%)	3 (1%)	82	94

*Continued on next page...*

*Continued from previous page...*

Mol	Chain	Analysed	Rotameric	Outliers	Percentiles	
All	All	1309/1420 (92%)	1297 (99%)	12 (1%)	82	94

All (12) residues with a non-rotameric sidechain are listed below:

Mol	Chain	Res	Type
1	A	61	LYS
1	A	129	SER
1	A	321	GLN
1	B	61	LYS
1	B	129	SER
1	B	321	GLN
1	C	61	LYS
1	C	129	SER
1	C	321	GLN
1	D	61	LYS
1	D	129	SER
1	D	321	GLN

Some sidechains can be flipped to improve hydrogen bonding and reduce clashes. All (2) such sidechains are listed below:

Mol	Chain	Res	Type
1	A	21	GLN
1	B	21	GLN

### 5.3.3 RNA [i](#)

There are no RNA molecules in this entry.

## 5.4 Non-standard residues in protein, DNA, RNA chains [i](#)

There are no non-standard protein/DNA/RNA residues in this entry.

## 5.5 Carbohydrates [i](#)

There are no carbohydrates in this entry.

## 5.6 Ligand geometry

Of 24 ligands modelled in this entry, 6 are monoatomic - leaving 18 for Mogul analysis.

In the following table, the Counts columns list the number of bonds (or angles) for which Mogul statistics could be retrieved, the number of bonds (or angles) that are observed in the model and the number of bonds (or angles) that are defined in the chemical component dictionary. The Link column lists molecule types, if any, to which the group is linked. The Z score for a bond length (or angle) is the number of standard deviations the observed value is removed from the expected value. A bond length (or angle) with  $|Z| > 2$  is considered an outlier worth inspection. RMSZ is the root-mean-square of all Z scores of the bond lengths (or angles).

Mol	Type	Chain	Res	Link	Bond lengths			Bond angles		
					Counts	RMSZ	# $ Z  > 2$	Counts	RMSZ	# $ Z  > 2$
2	SCN	A	501	-	1,2,2	0.25	0	0,1,1	0.00	-
2	SCN	A	502	-	1,2,2	1.06	0	0,1,1	0.00	-
2	SCN	A	503	-	1,2,2	0.89	0	0,1,1	0.00	-
2	SCN	A	504	-	1,2,2	0.57	0	0,1,1	0.00	-
4	TME	A	507	-	2,2,2	0.13	0	0,1,1	0.00	-
5	LLP	A	508	-	20,25,25	2.81	4 (20%)	26,34,34	2.55	10 (38%)
2	SCN	B	501	-	1,2,2	0.27	0	0,1,1	0.00	-
2	SCN	B	502	-	1,2,2	0.52	0	0,1,1	0.00	-
4	TME	B	505	-	2,2,2	0.46	0	0,1,1	0.00	-
4	TME	B	506	-	2,2,2	0.14	0	0,1,1	0.00	-
4	TME	B	507	-	2,2,2	0.48	0	0,1,1	0.00	-
5	LLP	B	508	-	20,25,25	3.14	4 (20%)	26,34,34	1.39	3 (11%)
2	SCN	C	501	-	1,2,2	0.09	0	0,1,1	0.00	-
2	SCN	C	502	-	1,2,2	0.96	0	0,1,1	0.00	-
5	LLP	C	504	-	20,25,25	2.93	5 (25%)	26,34,34	1.67	6 (23%)
2	SCN	D	501	-	1,2,2	0.48	0	0,1,1	0.00	-
4	TME	D	503	-	2,2,2	0.14	0	0,1,1	0.00	-
5	LLP	D	504	-	20,25,25	3.77	5 (25%)	26,34,34	2.12	8 (30%)

In the following table, the Chirals column lists the number of chiral outliers, the number of chiral centers analysed, the number of these observed in the model and the number defined in the chemical component dictionary. Similar counts are reported in the Torsion and Rings columns. '-' means no outliers of that kind were identified.

Mol	Type	Chain	Res	Link	Chirals	Torsions	Rings
2	SCN	A	501	-	-	0/0/0/0	0/0/0/0
2	SCN	A	502	-	-	0/0/0/0	0/0/0/0
2	SCN	A	503	-	-	0/0/0/0	0/0/0/0
2	SCN	A	504	-	-	0/0/0/0	0/0/0/0
4	TME	A	507	-	-	0/0/0/0	0/0/0/0
5	LLP	A	508	-	-	0/15/19/19	0/1/1/1

*Continued on next page...*

*Continued from previous page...*

Mol	Type	Chain	Res	Link	Chirals	Torsions	Rings
2	SCN	B	501	-	-	0/0/0/0	0/0/0/0
2	SCN	B	502	-	-	0/0/0/0	0/0/0/0
4	TME	B	505	-	-	0/0/0/0	0/0/0/0
4	TME	B	506	-	-	0/0/0/0	0/0/0/0
4	TME	B	507	-	-	0/0/0/0	0/0/0/0
5	LLP	B	508	-	-	0/15/19/19	0/1/1/1
2	SCN	C	501	-	-	0/0/0/0	0/0/0/0
2	SCN	C	502	-	-	0/0/0/0	0/0/0/0
5	LLP	C	504	-	-	0/15/19/19	0/1/1/1
2	SCN	D	501	-	-	0/0/0/0	0/0/0/0
4	TME	D	503	-	-	0/0/0/0	0/0/0/0
5	LLP	D	504	-	-	0/15/19/19	0/1/1/1

All (18) bond length outliers are listed below:

Mol	Chain	Res	Type	Atoms	Z	Observed(Å)	Ideal(Å)
5	A	508	LLP	C4-C4'	2.15	1.50	1.46
5	C	504	LLP	C4-C3	2.27	1.44	1.40
5	C	504	LLP	C4-C4'	2.41	1.50	1.46
5	D	504	LLP	C4-C4'	3.09	1.52	1.46
5	A	508	LLP	C4-C5	3.71	1.46	1.42
5	B	508	LLP	C4-C3	3.86	1.47	1.40
5	D	504	LLP	C4-C5	4.73	1.48	1.42
5	B	508	LLP	C4-C5	4.80	1.48	1.42
5	C	504	LLP	C4-C5	5.00	1.48	1.42
5	D	504	LLP	C4-C3	5.15	1.49	1.40
5	A	508	LLP	C4'-NZ	5.18	1.42	1.27
5	C	504	LLP	C4'-NZ	5.50	1.43	1.27
5	D	504	LLP	C4'-NZ	6.18	1.45	1.27
5	B	508	LLP	C4'-NZ	6.24	1.45	1.27
5	C	504	LLP	C3-C2	10.03	1.47	1.40
5	A	508	LLP	C3-C2	10.16	1.47	1.40
5	B	508	LLP	C3-C2	10.44	1.48	1.40
5	D	504	LLP	C3-C2	13.50	1.50	1.40

All (27) bond angle outliers are listed below:

Mol	Chain	Res	Type	Atoms	Z	Observed(°)	Ideal(°)
5	D	504	LLP	C4-C3-C2	-5.84	116.56	120.15
5	A	508	LLP	C3-C4-C4'	-4.91	111.13	120.52
5	D	504	LLP	C5-C4-C4'	-3.82	115.65	121.36
5	A	508	LLP	C2'-C2-C3	-3.55	116.73	120.96

*Continued on next page...*

*Continued from previous page...*

Mol	Chain	Res	Type	Atoms	Z	Observed(°)	Ideal(°)
5	A	508	LLP	OP2-P-OP4	-3.39	97.70	106.73
5	C	504	LLP	OP2-P-OP4	-3.30	97.95	106.73
5	C	504	LLP	C4-C3-C2	-3.29	118.13	120.15
5	A	508	LLP	C4-C3-C2	-3.16	118.21	120.15
5	A	508	LLP	C5'-C5-C4	-2.94	116.53	121.66
5	C	504	LLP	C3-C4-C5	-2.86	116.07	118.24
5	C	504	LLP	C4-C4'-NZ	-2.31	113.42	124.66
5	D	504	LLP	C3-C4-C5	-2.12	116.63	118.24
5	B	508	LLP	C3-C2-N1	-2.07	118.03	120.75
5	D	504	LLP	OP3-P-OP4	-2.00	101.40	106.73
5	D	504	LLP	OP3-P-OP2	2.04	115.83	107.61
5	A	508	LLP	C5'-C5-C6	2.11	122.95	119.33
5	A	508	LLP	CD-CE-NZ	2.21	115.78	110.88
5	C	504	LLP	OP2-P-OP1	2.35	119.71	110.50
5	C	504	LLP	O3-C3-C2	2.53	123.08	117.78
5	B	508	LLP	C6-N1-C2	2.55	124.18	119.26
5	A	508	LLP	OP3-P-OP1	3.29	123.39	110.50
5	B	508	LLP	CD-CE-NZ	3.32	118.22	110.88
5	D	504	LLP	CD-CE-NZ	3.32	118.22	110.88
5	D	504	LLP	OP4-C5'-C5	3.46	116.27	109.32
5	A	508	LLP	O3-C3-C2	3.62	125.36	117.78
5	D	504	LLP	C3-C4-C4'	3.77	127.72	120.52
5	A	508	LLP	C5-C4-C4'	7.05	131.91	121.36

There are no chirality outliers.

There are no torsion outliers.

There are no ring outliers.

10 monomers are involved in 18 short contacts:

Mol	Chain	Res	Type	Clashes	Symm-Clashes
4	A	507	TME	3	0
5	A	508	LLP	1	0
2	B	502	SCN	1	0
4	B	505	TME	1	0
4	B	507	TME	1	0
2	C	501	SCN	2	0
2	C	502	SCN	2	0
5	C	504	LLP	2	0
2	D	501	SCN	1	0
5	D	504	LLP	6	0

## 5.7 Other polymers

There are no such residues in this entry.

## 5.8 Polymer linkage issues

There are no chain breaks in this entry.

## 6 Fit of model and data ⓘ

### 6.1 Protein, DNA and RNA chains ⓘ

In the following table, the column labelled ‘#RSRZ> 2’ contains the number (and percentage) of RSRZ outliers, followed by percent RSRZ outliers for the chain as percentile scores relative to all X-ray entries and entries of similar resolution. The OWAB column contains the minimum, median, 95<sup>th</sup> percentile and maximum values of the occupancy-weighted average B-factor per residue. The column labelled ‘Q< 0.9’ lists the number of (and percentage) of residues with an average occupancy less than 0.9.

Mol	Chain	Analysed	<RSRZ>	#RSRZ>2	OWAB(Å <sup>2</sup> )	Q<0.9
1	A	393/427 (92%)	0.16	18 (4%) 33 35	5, 30, 60, 79	0
1	B	418/427 (97%)	-0.15	6 (1%) 75 76	6, 24, 54, 72	0
1	C	411/427 (96%)	-0.20	5 (1%) 79 80	11, 26, 56, 76	0
1	D	403/427 (94%)	0.21	10 (2%) 58 60	12, 38, 68, 79	0
All	All	1625/1708 (95%)	0.00	39 (2%) 59 61	5, 29, 61, 79	0

All (39) RSRZ outliers are listed below:

Mol	Chain	Res	Type	RSRZ
1	A	227	GLU	3.4
1	C	8	ASN	3.4
1	B	338	VAL	3.3
1	D	10	GLY	3.2
1	A	259	ALA	3.2
1	C	157	ALA	3.1
1	D	231	THR	2.8
1	A	209	ALA	2.7
1	B	337	PRO	2.6
1	A	225	LEU	2.6
1	A	218	LEU	2.6
1	C	188	ASP	2.6
1	C	167	LEU	2.5
1	A	298	TYR	2.4
1	D	188	ASP	2.4
1	B	265	ALA	2.4
1	C	338	VAL	2.4
1	D	8	ASN	2.4
1	A	75	MET	2.4
1	D	2	ASP	2.3
1	A	247	ASP	2.3

*Continued on next page...*



*Continued from previous page...*

Mol	Chain	Res	Type	RSRZ
1	A	272	ILE	2.3
1	B	330	TYR	2.3
1	A	216	ASP	2.3
1	B	332	ASP	2.3
1	A	250	PRO	2.3
1	A	254	ALA	2.2
1	A	258	THR	2.2
1	A	237	LEU	2.2
1	A	183	TYR	2.2
1	B	8	ASN	2.2
1	D	7	GLN	2.1
1	A	297	ASP	2.1
1	A	6	TYR	2.1
1	D	249	THR	2.1
1	D	143	VAL	2.0
1	D	333	GLY	2.0
1	D	169	GLU	2.0
1	A	264	MET	2.0

## 6.2 Non-standard residues in protein, DNA, RNA chains [i](#)

There are no non-standard protein/DNA/RNA residues in this entry.

## 6.3 Carbohydrates [i](#)

There are no carbohydrates in this entry.

## 6.4 Ligands [i](#)

In the following table, the Atoms column lists the number of modelled atoms in the group and the number defined in the chemical component dictionary. LLDF column lists the quality of electron density of the group with respect to its neighbouring residues in protein, DNA or RNA chains. The B-factors column lists the minimum, median, 95<sup>th</sup> percentile and maximum values of B factors of atoms in the group. The column labelled 'Q < 0.9' lists the number of atoms with occupancy less than 0.9.

Mol	Type	Chain	Res	Atoms	RSCC	RSR	LLDF	B-factors(Å <sup>2</sup> )	Q<0.9
2	SCN	A	502	3/3	0.96	0.20	6.99	25,25,32,35	0
2	SCN	A	504	3/3	0.85	0.19	5.27	45,45,51,58	0
2	SCN	A	503	3/3	0.90	0.24	4.57	41,41,48,51	0

*Continued on next page...*

*Continued from previous page...*

Mol	Type	Chain	Res	Atoms	RSCC	RSR	LLDF	B-factors( $\text{\AA}^2$ )	Q<0.9
2	SCN	B	501	3/3	0.89	0.18	4.55	21,21,29,41	0
4	TME	B	507	3/3	0.74	0.27	3.19	24,24,25,25	0
2	SCN	C	502	3/3	0.93	0.17	2.46	29,29,39,42	0
2	SCN	C	501	3/3	0.92	0.22	2.20	55,55,56,56	0
2	SCN	A	501	3/3	0.94	0.14	2.11	42,42,53,65	0
2	SCN	D	501	3/3	0.91	0.17	1.91	29,29,34,44	0
3	K	B	504	1/1	0.95	0.14	1.68	56,56,56,56	0
2	SCN	B	502	3/3	0.82	0.24	1.13	59,59,66,68	0
4	TME	A	507	3/3	0.91	0.19	0.13	14,14,14,15	0
4	TME	D	503	3/3	0.71	0.17	-0.28	38,38,40,40	0
5	LLP	D	504	25/25	0.95	0.12	-0.35	18,20,24,25	0
5	LLP	B	508	25/25	0.98	0.10	-0.35	6,9,9,9	0
5	LLP	A	508	25/25	0.96	0.13	-0.51	19,22,25,30	0
5	LLP	C	504	25/25	0.98	0.09	-0.84	11,13,16,17	0
3	K	C	503	1/1	0.93	0.12	-0.97	50,50,50,50	0
3	K	D	502	1/1	0.93	0.12	-1.61	40,40,40,40	0
3	K	A	506	1/1	0.98	0.04	-2.18	23,23,23,23	0
3	K	A	505	1/1	0.91	0.07	-3.02	45,45,45,45	0
3	K	B	503	1/1	0.96	0.04	-3.46	33,33,33,33	0
4	TME	B	505	3/3	0.79	0.23	-	20,20,20,20	0
4	TME	B	506	3/3	0.80	0.32	-	34,34,35,36	0

## 6.5 Other polymers ⓘ

There are no such residues in this entry.