



# wwPDB X-ray Structure Validation Summary Report ⓘ

Aug 27, 2017 – 10:25 AM EDT

PDB ID : 4XL8  
Title : Crystal Structure of Human Adenovirus 52 Short Fiber Knob in Complex with 2-O-Methyl-5-N-Acetylneuraminic Acid  
Authors : Stehle, T.; Liaci, A.M.  
Deposited on : unknown  
Resolution : 1.65 Å(reported)

This is a wwPDB X-ray Structure Validation Summary Report for a publicly released PDB entry.

We welcome your comments at [validation@mail.wwpdb.org](mailto:validation@mail.wwpdb.org)

A user guide is available at

<http://wwpdb.org/validation/2016/XrayValidationReportHelp>

with specific help available everywhere you see the ⓘ symbol.

---

The following versions of software and data (see [references ⓘ](#)) were used in the production of this report:

MolProbity : 4.02b-467  
Mogul : 1.7.2 (RC1), CSD as538be (2017)  
Xtriage (Phenix) : 1.9-1692  
EDS : rb-20029824  
Percentile statistics : 20161228.v01 (using entries in the PDB archive December 28th 2016)  
Refmac : 5.8.0135  
CCP4 : 6.5.0  
Ideal geometry (proteins) : Engh & Huber (2001)  
Ideal geometry (DNA, RNA) : Parkinson et al. (1996)  
Validation Pipeline (wwPDB-VP) : rb-20029824

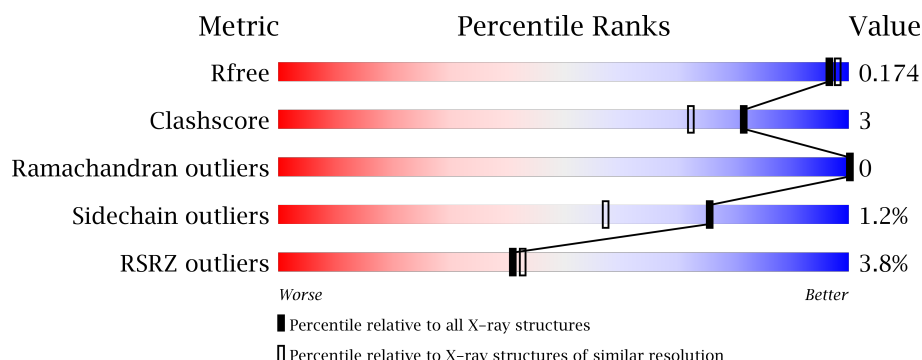
# 1 Overall quality at a glance ⓘ

The following experimental techniques were used to determine the structure:

## *X-RAY DIFFRACTION*

The reported resolution of this entry is 1.65 Å.

Percentile scores (ranging between 0-100) for global validation metrics of the entry are shown in the following graphic. The table shows the number of entries on which the scores are based.



Metric	Whole archive (#Entries)	Similar resolution (#Entries, resolution range(Å))
$R_{free}$	100719	1368 (1.66-1.66)
Clashscore	112137	1468 (1.66-1.66)
Ramachandran outliers	110173	1438 (1.66-1.66)
Sidechain outliers	110143	1438 (1.66-1.66)
RSRZ outliers	101464	1371 (1.66-1.66)

The table below summarises the geometric issues observed across the polymeric chains and their fit to the electron density. The red, orange, yellow and green segments on the lower bar indicate the fraction of residues that contain outliers for  $\geq 3$ , 2, 1 and 0 types of geometric quality criteria. A grey segment represents the fraction of residues that are not modelled. The numeric value for each fraction is indicated below the corresponding segment, with a dot representing fractions  $\leq 5\%$ . The upper red bar (where present) indicates the fraction of residues that have poor fit to the electron density. The numeric value is given above the bar.

Mol	Chain	Length	Quality of chain
1	A	209	<div> <div>4%</div> <div>78%</div> <div>18%</div> </div>
1	B	209	<div> <div>%</div> <div>70%</div> <div>7%</div> <div>23%</div> </div>
1	C	209	<div> <div>4%</div> <div>74%</div> <div>5%</div> <div>20%</div> </div>

The following table lists non-polymeric compounds, carbohydrate monomers and non-standard residues in protein, DNA, RNA chains that are outliers for geometric or electron-density-fit criteria:

Mol	Type	Chain	Res	Chirality	Geometry	Clashes	Electron density
2	MNA	A	401	-	-	-	X
3	GOL	A	402	-	-	-	X
4	TAM	B	401	-	-	-	X
5	GLU	B	402	-	-	-	X
7	MPD	C	402	-	-	-	X
8	MRD	C	403	-	-	-	X

## 2 Entry composition

There are 9 unique types of molecules in this entry. The entry contains 4412 atoms, of which 0 are hydrogens and 0 are deuteriums.

In the tables below, the ZeroOcc column contains the number of atoms modelled with zero occupancy, the AltConf column contains the number of residues with at least one atom in alternate conformation and the Trace column contains the number of residues modelled with at most 2 atoms.

- Molecule 1 is a protein called Fiber-1.

Mol	Chain	Residues	Atoms					ZeroOcc	AltConf	Trace
1	A	171	Total	C	N	O	S	0	7	0
			1331	841	218	264	8			
1	B	161	Total	C	N	O	S	0	14	0
			1295	824	205	258	8			
1	C	167	Total	C	N	O	S	0	13	0
			1342	852	215	267	8			

There are 84 discrepancies between the modelled and reference sequences:

Chain	Residue	Modelled	Actual	Comment	Reference
A	155	MET	-	initiating methionine	UNP A0MK70
A	156	ARG	-	expression tag	UNP A0MK70
A	157	GLY	-	expression tag	UNP A0MK70
A	158	SER	-	expression tag	UNP A0MK70
A	159	HIS	-	expression tag	UNP A0MK70
A	160	HIS	-	expression tag	UNP A0MK70
A	161	HIS	-	expression tag	UNP A0MK70
A	162	HIS	-	expression tag	UNP A0MK70
A	163	HIS	-	expression tag	UNP A0MK70
A	164	HIS	-	expression tag	UNP A0MK70
A	165	GLY	-	expression tag	UNP A0MK70
A	166	SER	-	expression tag	UNP A0MK70
A	167	GLY	-	expression tag	UNP A0MK70
A	168	SER	-	expression tag	UNP A0MK70
A	169	GLY	-	expression tag	UNP A0MK70
A	170	SER	-	expression tag	UNP A0MK70
A	171	GLY	-	expression tag	UNP A0MK70
A	172	ILE	-	expression tag	UNP A0MK70
A	173	GLU	-	expression tag	UNP A0MK70
A	174	GLY	-	expression tag	UNP A0MK70
A	175	ARG	-	expression tag	UNP A0MK70
A	176	PRO	-	expression tag	UNP A0MK70
A	177	TYR	-	expression tag	UNP A0MK70

*Continued on next page...*

*Continued from previous page...*

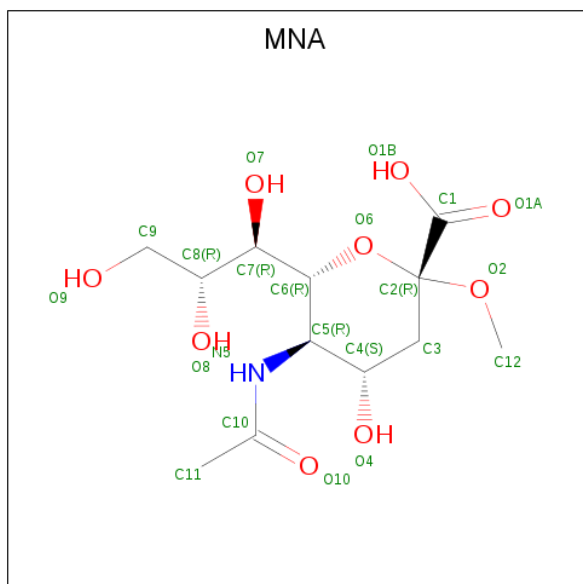
Chain	Residue	Modelled	Actual	Comment	Reference
A	178	ASN	-	expression tag	UNP A0MK70
A	179	GLY	-	expression tag	UNP A0MK70
A	180	THR	-	expression tag	UNP A0MK70
A	181	GLY	-	expression tag	UNP A0MK70
A	182	SER	-	expression tag	UNP A0MK70
B	155	MET	-	initiating methionine	UNP A0MK70
B	156	ARG	-	expression tag	UNP A0MK70
B	157	GLY	-	expression tag	UNP A0MK70
B	158	SER	-	expression tag	UNP A0MK70
B	159	HIS	-	expression tag	UNP A0MK70
B	160	HIS	-	expression tag	UNP A0MK70
B	161	HIS	-	expression tag	UNP A0MK70
B	162	HIS	-	expression tag	UNP A0MK70
B	163	HIS	-	expression tag	UNP A0MK70
B	164	HIS	-	expression tag	UNP A0MK70
B	165	GLY	-	expression tag	UNP A0MK70
B	166	SER	-	expression tag	UNP A0MK70
B	167	GLY	-	expression tag	UNP A0MK70
B	168	SER	-	expression tag	UNP A0MK70
B	169	GLY	-	expression tag	UNP A0MK70
B	170	SER	-	expression tag	UNP A0MK70
B	171	GLY	-	expression tag	UNP A0MK70
B	172	ILE	-	expression tag	UNP A0MK70
B	173	GLU	-	expression tag	UNP A0MK70
B	174	GLY	-	expression tag	UNP A0MK70
B	175	ARG	-	expression tag	UNP A0MK70
B	176	PRO	-	expression tag	UNP A0MK70
B	177	TYR	-	expression tag	UNP A0MK70
B	178	ASN	-	expression tag	UNP A0MK70
B	179	GLY	-	expression tag	UNP A0MK70
B	180	THR	-	expression tag	UNP A0MK70
B	181	GLY	-	expression tag	UNP A0MK70
B	182	SER	-	expression tag	UNP A0MK70
C	155	MET	-	initiating methionine	UNP A0MK70
C	156	ARG	-	expression tag	UNP A0MK70
C	157	GLY	-	expression tag	UNP A0MK70
C	158	SER	-	expression tag	UNP A0MK70
C	159	HIS	-	expression tag	UNP A0MK70
C	160	HIS	-	expression tag	UNP A0MK70
C	161	HIS	-	expression tag	UNP A0MK70
C	162	HIS	-	expression tag	UNP A0MK70
C	163	HIS	-	expression tag	UNP A0MK70

*Continued on next page...*

Continued from previous page...

Chain	Residue	Modelled	Actual	Comment	Reference
C	164	HIS	-	expression tag	UNP A0MK70
C	165	GLY	-	expression tag	UNP A0MK70
C	166	SER	-	expression tag	UNP A0MK70
C	167	GLY	-	expression tag	UNP A0MK70
C	168	SER	-	expression tag	UNP A0MK70
C	169	GLY	-	expression tag	UNP A0MK70
C	170	SER	-	expression tag	UNP A0MK70
C	171	GLY	-	expression tag	UNP A0MK70
C	172	ILE	-	expression tag	UNP A0MK70
C	173	GLU	-	expression tag	UNP A0MK70
C	174	GLY	-	expression tag	UNP A0MK70
C	175	ARG	-	expression tag	UNP A0MK70
C	176	PRO	-	expression tag	UNP A0MK70
C	177	TYR	-	expression tag	UNP A0MK70
C	178	ASN	-	expression tag	UNP A0MK70
C	179	GLY	-	expression tag	UNP A0MK70
C	180	THR	-	expression tag	UNP A0MK70
C	181	GLY	-	expression tag	UNP A0MK70
C	182	SER	-	expression tag	UNP A0MK70

- Molecule 2 is 2-O-METHYL-5-N-ACETYL-ALPHA-D- NEURAMINIC ACID (three-letter code: MNA) (formula: C<sub>12</sub>H<sub>21</sub>NO<sub>9</sub>).



Mol	Chain	Residues	Atoms				ZeroOcc	AltConf
2	A	1	Total	C	N	O	0	0
			22	12	1	9		

Continued on next page...

Continued from previous page...

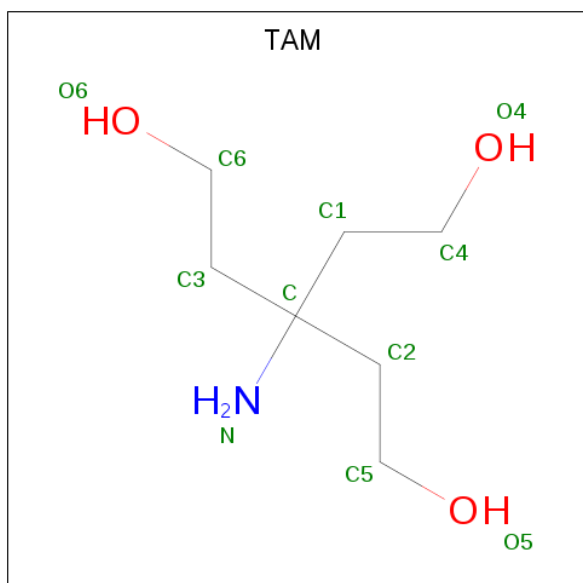
Mol	Chain	Residues	Atoms				ZeroOcc	AltConf
2	C	1	Total	C	N	O	0	0
			22	12	1	9		

- Molecule 3 is GLYCEROL (three-letter code: GOL) (formula:  $C_3H_8O_3$ ).



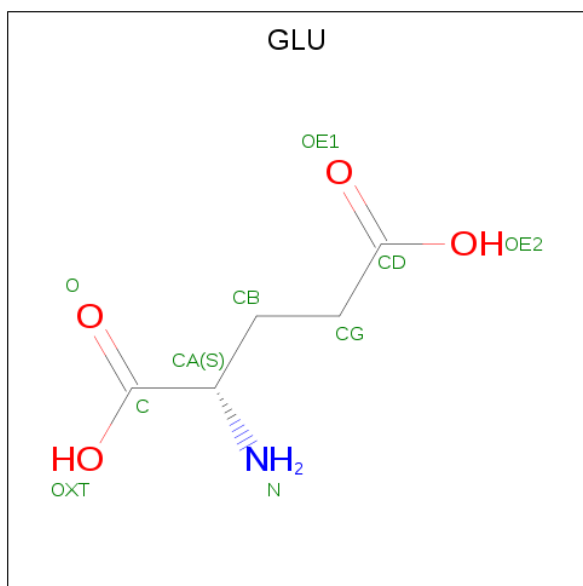
Mol	Chain	Residues	Atoms			ZeroOcc	AltConf
3	A	1	Total	C	O	0	0
			6	3	3		

- Molecule 4 is TRIS(HYDROXYETHYL)AMINOMETHANE (three-letter code: TAM) (formula:  $C_7H_{17}NO_3$ ).



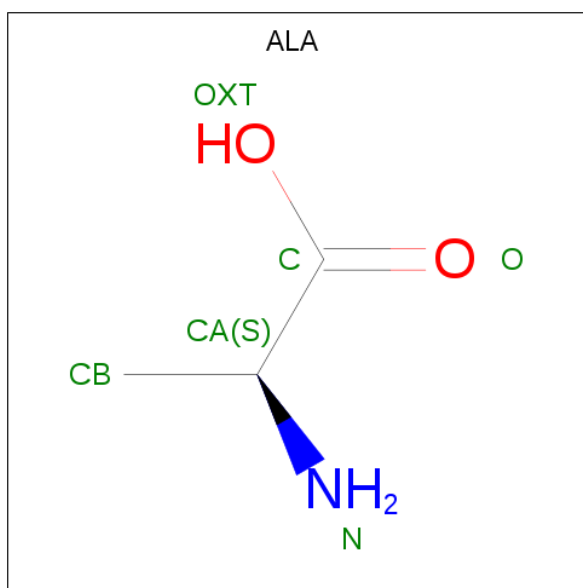
Mol	Chain	Residues	Atoms				ZeroOcc	AltConf
4	B	1	Total	C	N	O	0	0
			11	7	1	3		

- Molecule 5 is GLUTAMIC ACID (three-letter code: GLU) (formula:  $C_5H_9NO_4$ ).



Mol	Chain	Residues	Atoms				ZeroOcc	AltConf
5	B	1	Total	C	N	O	0	0
			10	5	1	4		

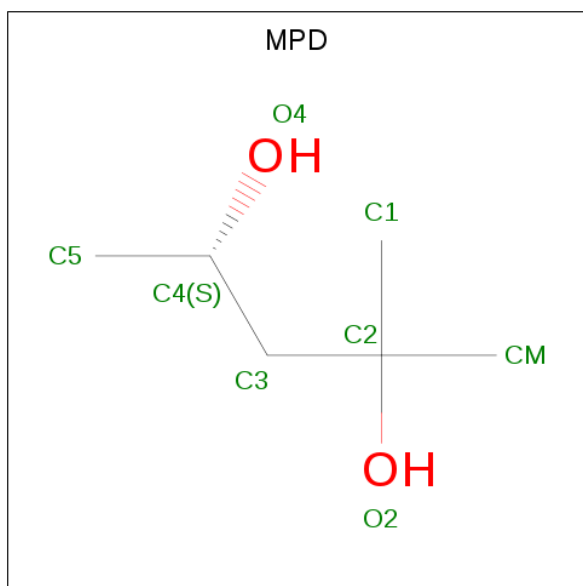
- Molecule 6 is ALANINE (three-letter code: ALA) (formula:  $C_3H_7NO_2$ ).





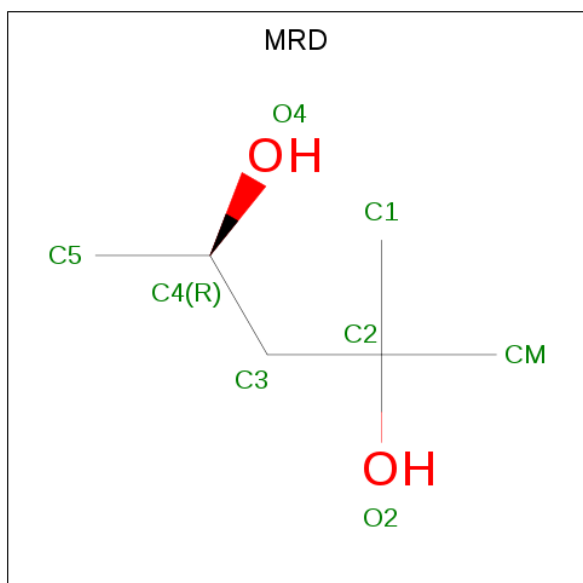
Mol	Chain	Residues	Atoms				ZeroOcc	AltConf
6	B	1	Total	C	N	O	0	0
			6	3	1	2		

- Molecule 7 is (4S)-2-METHYL-2,4-PENTANEDIOL (three-letter code: MPD) (formula:  $C_6H_{14}O_2$ ).



Mol	Chain	Residues	Atoms			ZeroOcc	AltConf
7	C	1	Total	C	O	0	0
			8	6	2		

- Molecule 8 is (4R)-2-METHYLPENTANE-2,4-DIOL (three-letter code: MRD) (formula:  $C_6H_{14}O_2$ ).



Mol	Chain	Residues	Atoms			ZeroOcc	AltConf
8	C	1	Total	C	O	0	0
			8	6	2		

- Molecule 9 is water.

Mol	Chain	Residues	Atoms			ZeroOcc	AltConf
9	A	144	Total	O		0	0
			144	144			
9	B	110	Total	O		0	0
			110	110			
9	C	97	Total	O		0	0
			97	97			



- Molecule 1: Fiber-1



## 4 Data and refinement statistics

Property	Value	Source
Space group	P 21 21 21	Depositor
Cell constants a, b, c, $\alpha$ , $\beta$ , $\gamma$	63.77Å 81.61Å 92.65Å 90.00° 90.00° 90.00°	Depositor
Resolution (Å)	37.48 – 1.65 46.33 – 1.65	Depositor EDS
% Data completeness (in resolution range)	99.7 (37.48-1.65) 99.7 (46.33-1.65)	Depositor EDS
$R_{merge}$	(Not available)	Depositor
$R_{sym}$	0.11	Depositor
$\langle I/\sigma(I) \rangle$ <sup>1</sup>	1.41 (at 1.65Å)	Xtriage
Refinement program	PHENIX	Depositor
R, $R_{free}$	0.151 , 0.174 0.151 , 0.174	Depositor DCC
$R_{free}$ test set	2942 reflections (5.00%)	DCC
Wilson B-factor (Å <sup>2</sup> )	15.4	Xtriage
Anisotropy	0.229	Xtriage
Bulk solvent $k_{sol}$ (e/Å <sup>3</sup> ), $B_{sol}$ (Å <sup>2</sup> )	0.37 , 51.8	EDS
L-test for twinning <sup>2</sup>	$\langle  L  \rangle = 0.48$ , $\langle L^2 \rangle = 0.31$	Xtriage
Estimated twinning fraction	No twinning to report.	Xtriage
$F_o, F_c$ correlation	0.97	EDS
Total number of atoms	4412	wwPDB-VP
Average B, all atoms (Å <sup>2</sup> )	18.0	wwPDB-VP

Xtriage's analysis on translational NCS is as follows: *The largest off-origin peak in the Patterson function is 6.56% of the height of the origin peak. No significant pseudotranslation is detected.*

<sup>1</sup>Intensities estimated from amplitudes.

<sup>2</sup>Theoretical values of  $\langle |L| \rangle$ ,  $\langle L^2 \rangle$  for acentric reflections are 0.5, 0.333 respectively for untwinned datasets, and 0.375, 0.2 for perfectly twinned datasets.

## 5 Model quality [i](#)

### 5.1 Standard geometry [i](#)

Bond lengths and bond angles in the following residue types are not validated in this section: MRD, GOL, MPD, MNA, TAM

The Z score for a bond length (or angle) is the number of standard deviations the observed value is removed from the expected value. A bond length (or angle) with  $|Z| > 5$  is considered an outlier worth inspection. RMSZ is the root-mean-square of all Z scores of the bond lengths (or angles).

Mol	Chain	Bond lengths		Bond angles	
		RMSZ	# Z  >5	RMSZ	# Z  >5
1	A	0.58	0/1377	0.70	0/1882
1	B	0.55	0/1356	0.70	0/1855
1	C	0.53	0/1398	0.64	0/1909
All	All	0.56	0/4131	0.68	0/5646

There are no bond length outliers.

There are no bond angle outliers.

There are no chirality outliers.

There are no planarity outliers.

### 5.2 Too-close contacts [i](#)

In the following table, the Non-H and H(model) columns list the number of non-hydrogen atoms and hydrogen atoms in the chain respectively. The H(added) column lists the number of hydrogen atoms added and optimized by MolProbity. The Clashes column lists the number of clashes within the asymmetric unit, whereas Symm-Clashes lists symmetry related clashes.

Mol	Chain	Non-H	H(model)	H(added)	Clashes	Symm-Clashes
1	A	1331	0	1301	5	0
1	B	1295	0	1271	11	1
1	C	1342	0	1305	7	0
2	A	22	0	20	0	0
2	C	22	0	20	0	0
3	A	6	0	8	1	0
4	B	11	0	17	2	0
5	B	10	0	5	3	0
6	B	6	0	4	1	0
7	C	8	0	14	0	0

*Continued on next page...*

*Continued from previous page...*

Mol	Chain	Non-H	H(model)	H(added)	Clashes	Symm-Clashes
8	C	8	0	14	0	0
9	A	144	0	0	2	1
9	B	110	0	0	5	0
9	C	97	0	0	2	0
All	All	4412	0	3979	24	1

The all-atom clashscore is defined as the number of clashes found per 1000 atoms (including hydrogen atoms). The all-atom clashscore for this structure is 3.

The worst 5 of 24 close contacts within the same asymmetric unit are listed below, sorted by their clash magnitude.

Atom-1	Atom-2	Interatomic distance (Å)	Clash overlap (Å)
1:C:312[B]:GLN:OE1	9:C:501:HOH:O	2.06	0.74
1:B:204[B]:ASN:ND2	9:B:502:HOH:O	2.18	0.73
1:B:312[B]:GLN:NE2	9:B:504:HOH:O	2.23	0.71
1:B:246:GLU:OE2	4:B:401:TAM:O4	2.10	0.69
1:B:261:LEU:H	6:B:403:ALA:N	1.93	0.67

All (1) symmetry-related close contacts are listed below. The label for Atom-2 includes the symmetry operator and encoded unit-cell translations to be applied.

Atom-1	Atom-2	Interatomic distance (Å)	Clash overlap (Å)
1:B:204[A]:ASN:ND2	9:A:530:HOH:O[2_555]	2.06	0.14

## 5.3 Torsion angles [i](#)

### 5.3.1 Protein backbone [i](#)

In the following table, the Percentiles column shows the percent Ramachandran outliers of the chain as a percentile score with respect to all X-ray entries followed by that with respect to entries of similar resolution.

The Analysed column shows the number of residues for which the backbone conformation was analysed, and the total number of residues.

Mol	Chain	Analysed	Favoured	Allowed	Outliers	Percentiles	
1	A	176/209 (84%)	173 (98%)	3 (2%)	0	100	100
1	B	171/209 (82%)	167 (98%)	4 (2%)	0	100	100

*Continued on next page...*

*Continued from previous page...*

Mol	Chain	Analysed	Favoured	Allowed	Outliers	Percentiles	
1	C	174/209 (83%)	170 (98%)	4 (2%)	0	100	100
All	All	521/627 (83%)	510 (98%)	11 (2%)	0	100	100

There are no Ramachandran outliers to report.

### 5.3.2 Protein sidechains [i](#)

In the following table, the Percentiles column shows the percent sidechain outliers of the chain as a percentile score with respect to all X-ray entries followed by that with respect to entries of similar resolution.

The Analysed column shows the number of residues for which the sidechain conformation was analysed, and the total number of residues.

Mol	Chain	Analysed	Rotameric	Outliers	Percentiles	
1	A	151/172 (88%)	149 (99%)	2 (1%)	73	54
1	B	149/172 (87%)	147 (99%)	2 (1%)	73	54
1	C	152/172 (88%)	151 (99%)	1 (1%)	87	76
All	All	452/516 (88%)	447 (99%)	5 (1%)	75	61

All (5) residues with a non-rotameric sidechain are listed below:

Mol	Chain	Res	Type
1	A	198	TRP
1	A	203	SER
1	B	198	TRP
1	B	285	TYR
1	C	198	TRP

Some sidechains can be flipped to improve hydrogen bonding and reduce clashes. There are no such sidechains identified.

### 5.3.3 RNA [i](#)

There are no RNA molecules in this entry.

## 5.4 Non-standard residues in protein, DNA, RNA chains [i](#)

There are no non-standard protein/DNA/RNA residues in this entry.

## 5.5 Carbohydrates ⓘ

There are no carbohydrates in this entry.

## 5.6 Ligand geometry ⓘ

8 ligands are modelled in this entry.

In the following table, the Counts columns list the number of bonds (or angles) for which Mogul statistics could be retrieved, the number of bonds (or angles) that are observed in the model and the number of bonds (or angles) that are defined in the chemical component dictionary. The Link column lists molecule types, if any, to which the group is linked. The Z score for a bond length (or angle) is the number of standard deviations the observed value is removed from the expected value. A bond length (or angle) with  $|Z| > 2$  is considered an outlier worth inspection. RMSZ is the root-mean-square of all Z scores of the bond lengths (or angles).

Mol	Type	Chain	Res	Link	Bond lengths			Bond angles		
					Counts	RMSZ	$\# Z  > 2$	Counts	RMSZ	$\# Z  > 2$
2	MNA	A	401	-	19,22,22	0.48	0	21,32,32	0.59	0
3	GOL	A	402	-	5,5,5	0.43	0	5,5,5	0.54	0
4	TAM	B	401	-	7,10,10	0.47	0	9,12,12	0.40	0
5	GLU	B	402	-	1,9,9	0.14	0	1,11,11	0.09	0
6	ALA	B	403	-	2,5,5	0.36	0	2,6,6	0.38	0
2	MNA	C	401	-	19,22,22	0.50	0	21,32,32	0.66	0
7	MPD	C	402	-	7,7,7	0.30	0	9,10,10	0.19	0
8	MRD	C	403	-	7,7,7	0.38	0	9,10,10	0.37	0

In the following table, the Chirals column lists the number of chiral outliers, the number of chiral centers analysed, the number of these observed in the model and the number defined in the chemical component dictionary. Similar counts are reported in the Torsion and Rings columns. '-' means no outliers of that kind were identified.

Mol	Type	Chain	Res	Link	Chirals	Torsions	Rings
2	MNA	A	401	-	-	0/17/41/41	0/1/1/1
3	GOL	A	402	-	-	0/4/4/4	0/0/0/0
4	TAM	B	401	-	-	0/12/12/12	0/0/0/0
5	GLU	B	402	-	-	0/3/9/9	0/0/0/0
6	ALA	B	403	-	-	0/0/4/4	0/0/0/0
2	MNA	C	401	-	-	0/17/41/41	0/1/1/1
7	MPD	C	402	-	-	0/5/5/5	0/0/0/0
8	MRD	C	403	-	-	0/5/5/5	0/0/0/0

There are no bond length outliers.

There are no bond angle outliers.



There are no chirality outliers.

There are no torsion outliers.

There are no ring outliers.

4 monomers are involved in 7 short contacts:

Mol	Chain	Res	Type	Clashes	Symm-Clashes
3	A	402	GOL	1	0
4	B	401	TAM	2	0
5	B	402	GLU	3	0
6	B	403	ALA	1	0

## 5.7 Other polymers [i](#)

There are no such residues in this entry.

## 5.8 Polymer linkage issues [i](#)

There are no chain breaks in this entry.

## 6 Fit of model and data [i](#)

### 6.1 Protein, DNA and RNA chains [i](#)

In the following table, the column labelled ‘#RSRZ> 2’ contains the number (and percentage) of RSRZ outliers, followed by percent RSRZ outliers for the chain as percentile scores relative to all X-ray entries and entries of similar resolution. The OWAB column contains the minimum, median, 95<sup>th</sup> percentile and maximum values of the occupancy-weighted average B-factor per residue. The column labelled ‘Q< 0.9’ lists the number of (and percentage) of residues with an average occupancy less than 0.9.

Mol	Chain	Analysed	<RSRZ>	#RSRZ>2	OWAB(Å <sup>2</sup> )	Q<0.9
1	A	171/209 (81%)	-0.27	8 (4%) 32 31	6, 14, 37, 64	0
1	B	161/209 (77%)	-0.25	2 (1%) 79 82	7, 16, 33, 64	0
1	C	167/209 (79%)	-0.03	9 (5%) 26 25	7, 15, 43, 73	0
All	All	499/627 (79%)	-0.18	19 (3%) 41 43	6, 15, 37, 73	0

The worst 5 of 19 RSRZ outliers are listed below:

Mol	Chain	Res	Type	RSRZ
1	C	271	PHE	8.0
1	C	177	TYR	6.1
1	C	193	GLY	5.0
1	B	285	TYR	4.7
1	C	285	TYR	4.4

### 6.2 Non-standard residues in protein, DNA, RNA chains [i](#)

There are no non-standard protein/DNA/RNA residues in this entry.

### 6.3 Carbohydrates [i](#)

There are no carbohydrates in this entry.

### 6.4 Ligands [i](#)

In the following table, the Atoms column lists the number of modelled atoms in the group and the number defined in the chemical component dictionary. LLDF column lists the quality of electron density of the group with respect to its neighbouring residues in protein, DNA or RNA chains. The B-factors column lists the minimum, median, 95<sup>th</sup> percentile and maximum values of B factors

of atoms in the group. The column labelled 'Q< 0.9' lists the number of atoms with occupancy less than 0.9.

Mol	Type	Chain	Res	Atoms	RSCC	RSR	LLDF	B-factors( $\text{\AA}^2$ )	Q<0.9
4	TAM	B	401	11/11	0.66	0.26	7.01	10,15,24,28	11
7	MPD	C	402	8/8	0.81	0.20	5.12	22,28,30,31	8
3	GOL	A	402	6/6	0.67	0.21	4.99	19,19,19,19	6
8	MRD	C	403	8/8	0.90	0.14	3.13	24,28,35,39	8
5	GLU	B	402	10/10	0.86	0.18	3.05	22,38,43,66	10
2	MNA	A	401	22/22	0.82	0.17	2.07	15,21,25,29	20
6	ALA	B	403	6/6	0.75	0.19	1.61	44,54,55,61	0
2	MNA	C	401	22/22	0.92	0.09	-0.11	10,15,23,28	0

## 6.5 Other polymers [i](#)

There are no such residues in this entry.