



Full wwPDB X-ray Structure Validation Report ⓘ

Nov 22, 2017 – 11:13 AM EST

PDB ID : 5XMS
Title : Plasmodium vivax SHMT bound with PLP-glycine and GS498
Authors : Chitnumsub, P.; Jaruwat, A.; Leartsakulpanich, U.; Schwertz, G.; Diederich, F.
Deposited on : unknown
Resolution : 2.45 Å(reported)

This is a Full wwPDB X-ray Structure Validation Report for a publicly released PDB entry.

We welcome your comments at validation@mail.wwpdb.org

A user guide is available at

<http://wwpdb.org/validation/2016/XrayValidationReportHelp>

with specific help available everywhere you see the ⓘ symbol.

The following versions of software and data (see [references ⓘ](#)) were used in the production of this report:

MolProbity : 4.02b-467
Mogul : 1.7.2 (RC1), CSD as538be (2017)
Xtriage (Phenix) : 1.9-1692
EDS : rb-20030345
Percentile statistics : 20161228.v01 (using entries in the PDB archive December 28th 2016)
Refmac : 5.8.0135
CCP4 : 6.5.0
Ideal geometry (proteins) : Engh & Huber (2001)
Ideal geometry (DNA, RNA) : Parkinson et al. (1996)
Validation Pipeline (wwPDB-VP) : rb-20030345

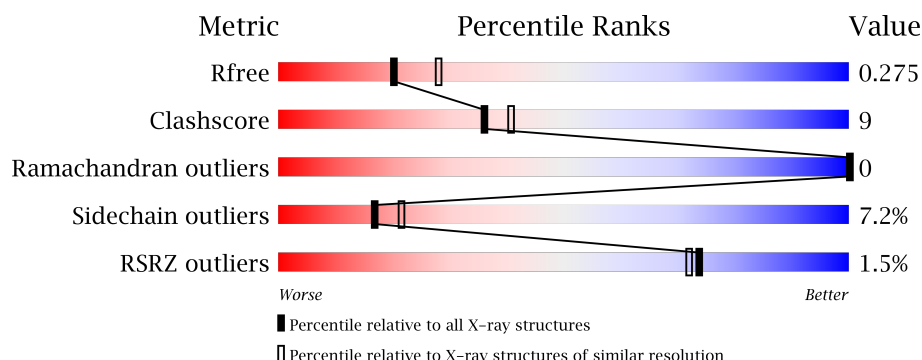
1 Overall quality at a glance

The following experimental techniques were used to determine the structure:

X-RAY DIFFRACTION

The reported resolution of this entry is 2.45 Å.

Percentile scores (ranging between 0-100) for global validation metrics of the entry are shown in the following graphic. The table shows the number of entries on which the scores are based.



Metric	Whole archive (#Entries)	Similar resolution (#Entries, resolution range(Å))
R_{free}	100719	1119 (2.48-2.44)
Clashscore	112137	1193 (2.48-2.44)
Ramachandran outliers	110173	1185 (2.48-2.44)
Sidechain outliers	110143	1185 (2.48-2.44)
RSRZ outliers	101464	1126 (2.48-2.44)

The table below summarises the geometric issues observed across the polymeric chains and their fit to the electron density. The red, orange, yellow and green segments on the lower bar indicate the fraction of residues that contain outliers for ≥ 3 , 2, 1 and 0 types of geometric quality criteria. A grey segment represents the fraction of residues that are not modelled. The numeric value for each fraction is indicated below the corresponding segment, with a dot representing fractions $\leq 5\%$. The upper red bar (where present) indicates the fraction of residues that have poor fit to the electron density. The numeric value is given above the bar.

Mol	Chain	Length	Quality of chain
1	A	442	<div> <div>2%</div> <div> <div></div> <div>76%</div> <div>22%</div> <div>.</div> </div> </div>
1	B	442	<div> <div>2%</div> <div> <div></div> <div>78%</div> <div>20%</div> <div>.</div> </div> </div>
1	C	442	<div> <div>%</div> <div> <div></div> <div>77%</div> <div>20%</div> <div>.</div> </div> </div>

2 Entry composition [i](#)

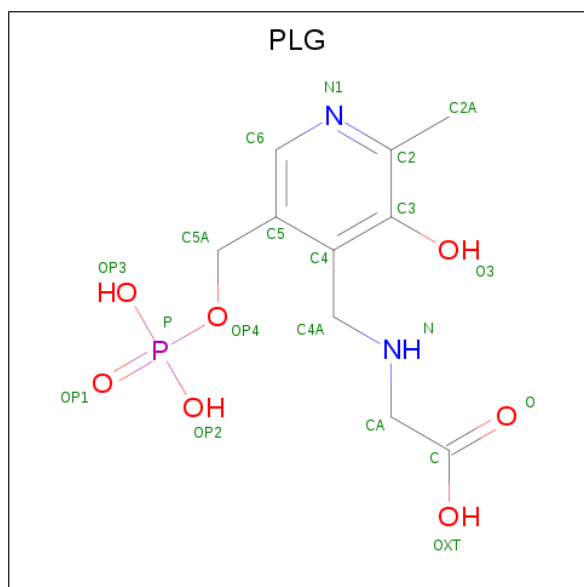
There are 5 unique types of molecules in this entry. The entry contains 10865 atoms, of which 0 are hydrogens and 0 are deuteriums.

In the tables below, the ZeroOcc column contains the number of atoms modelled with zero occupancy, the AltConf column contains the number of residues with at least one atom in alternate conformation and the Trace column contains the number of residues modelled with at most 2 atoms.

- Molecule 1 is a protein called Serine hydroxymethyltransferase.

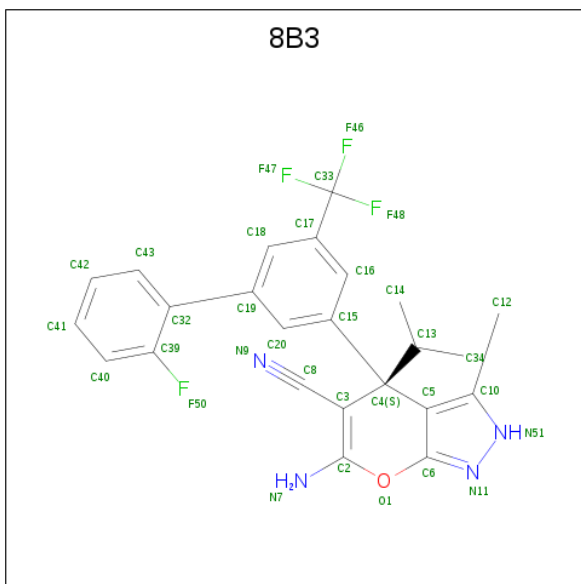
Mol	Chain	Residues	Atoms					ZeroOcc	AltConf	Trace
1	A	442	Total	C	N	O	S	0	0	0
			3458	2186	600	655	17			
1	B	442	Total	C	N	O	S	0	0	0
			3458	2186	600	655	17			
1	C	442	Total	C	N	O	S	0	0	0
			3458	2186	600	655	17			

- Molecule 2 is N-GLYCINE-[3-HYDROXY-2-METHYL-5-PHOSPHONOXYMETHYL-PYRIDIN-4-YL-METHANE] (three-letter code: PLG) (formula: C₁₀H₁₅N₂O₇P).



Mol	Chain	Residues	Atoms					ZeroOcc	AltConf
2	A	1	Total	C	N	O	P	0	0
			20	10	2	7	1		
2	B	1	Total	C	N	O	P	0	0
			20	10	2	7	1		
2	C	1	Total	C	N	O	P	0	0
			20	10	2	7	1		

- Molecule 3 is (4 {S})-6-azanyl-4-[3-(2-fluorophenyl)-5-(trifluoromethyl)phenyl]-3-methyl-4-propan-2-yl-2 {H}-pyrano[2,3-c]pyrazole-5-carbonitrile (three-letter code: 8B3) (formula: $C_{24}H_{20}F_4N_4O$).



Mol	Chain	Residues	Atoms					ZeroOcc	AltConf
3	A	1	Total	C	F	N	O	0	0
			33	24	4	4	1		
3	B	1	Total	C	F	N	O	0	0
			33	24	4	4	1		
3	C	1	Total	C	F	N	O	0	0
			33	24	4	4	1		

- Molecule 4 is CHLORIDE ION (three-letter code: CL) (formula: Cl).

Mol	Chain	Residues	Atoms		ZeroOcc	AltConf
4	A	1	Total	Cl	0	0
			1	1		
4	C	1	Total	Cl	0	0
			1	1		

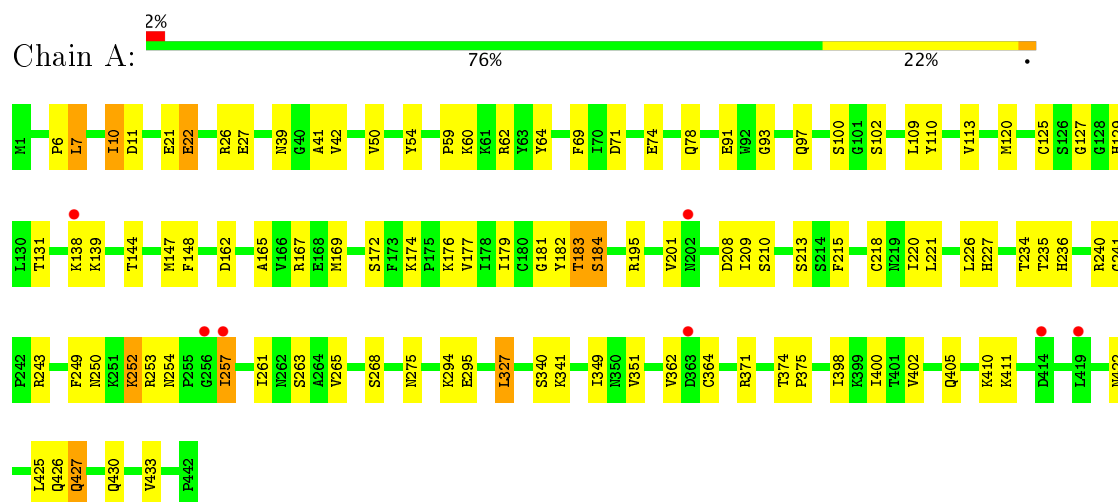
- Molecule 5 is water.

Mol	Chain	Residues	Atoms		ZeroOcc	AltConf
5	A	110	Total	O	0	0
			110	110		
5	B	110	Total	O	0	0
			110	110		
5	C	110	Total	O	0	0
			110	110		

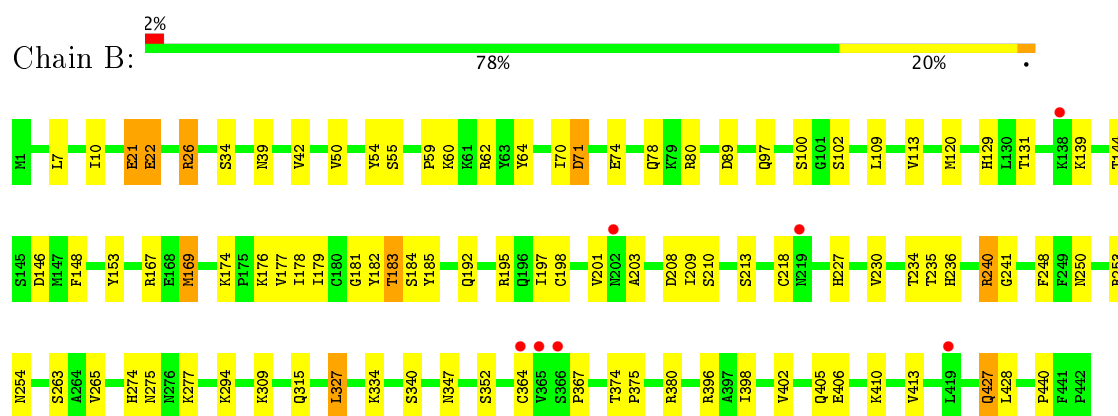
3 Residue-property plots

These plots are drawn for all protein, RNA and DNA chains in the entry. The first graphic for a chain summarises the proportions of the various outlier classes displayed in the second graphic. The second graphic shows the sequence view annotated by issues in geometry and electron density. Residues are color-coded according to the number of geometric quality criteria for which they contain at least one outlier: green = 0, yellow = 1, orange = 2 and red = 3 or more. A red dot above a residue indicates a poor fit to the electron density ($RSRZ > 2$). Stretches of 2 or more consecutive residues without any outlier are shown as a green connector. Residues present in the sample, but not in the model, are shown in grey.

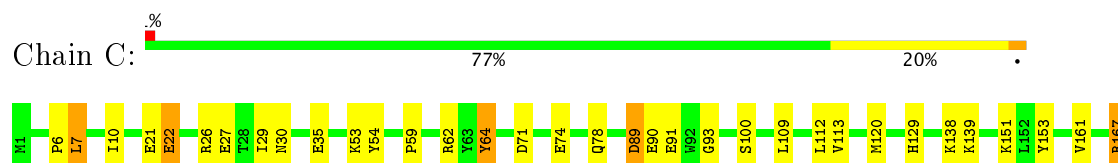
• Molecule 1: Serine hydroxymethyltransferase

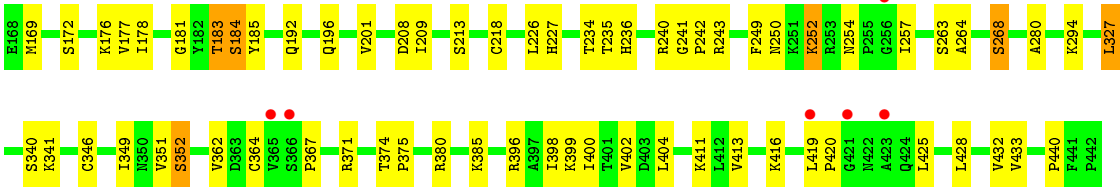


• Molecule 1: Serine hydroxymethyltransferase



• Molecule 1: Serine hydroxymethyltransferase





4 Data and refinement statistics

Property	Value	Source
Space group	C 1 2 1	Depositor
Cell constants a, b, c, α , β , γ	101.81Å 58.79Å 235.13Å 90.00° 89.99° 90.00°	Depositor
Resolution (Å)	30.00 – 2.45 29.16 – 2.45	Depositor EDS
% Data completeness (in resolution range)	95.1 (30.00-2.45) 95.1 (29.16-2.45)	Depositor EDS
R_{merge}	0.02	Depositor
R_{sym}	(Not available)	Depositor
$\langle I/\sigma(I) \rangle$ ¹	13.22 (at 2.45Å)	Xtriage
Refinement program	REFMAC 5.8.0103	Depositor
R, R_{free}	0.218 , 0.280 0.217 , 0.275	Depositor DCC
R_{free} test set	4837 reflections (10.93%)	DCC
Wilson B-factor (Å ²)	33.1	Xtriage
Anisotropy	0.079	Xtriage
Bulk solvent k_{sol} (e/Å ³), B_{sol} (Å ²)	0.33 , 13.9	EDS
L-test for twinning ²	$\langle L \rangle = 0.52$, $\langle L^2 \rangle = 0.35$	Xtriage
Estimated twinning fraction	0.013 for -1/2*h+3/2*k,1/2*h+1/2*k,-l 0.013 for -1/2*h-3/2*k,-1/2*h+1/2*k,-l 0.469 for 1/2*h+3/2*k,1/2*h-1/2*k,-l 0.477 for 1/2*h-3/2*k,-1/2*h-1/2*k,-l 0.014 for -h,-k,l	Xtriage
F_o, F_c correlation	0.93	EDS
Total number of atoms	10865	wwPDB-VP
Average B, all atoms (Å ²)	34.0	wwPDB-VP

Xtriage's analysis on translational NCS is as follows: *The largest off-origin peak in the Patterson function is 4.34% of the height of the origin peak. No significant pseudotranslation is detected.*

¹Intensities estimated from amplitudes.

²Theoretical values of $\langle |L| \rangle$, $\langle L^2 \rangle$ for acentric reflections are 0.5, 0.333 respectively for untwinned datasets, and 0.375, 0.2 for perfectly twinned datasets.

5 Model quality

5.1 Standard geometry

Bond lengths and bond angles in the following residue types are not validated in this section: PLG, 8B3, CL

The Z score for a bond length (or angle) is the number of standard deviations the observed value is removed from the expected value. A bond length (or angle) with $|Z| > 5$ is considered an outlier worth inspection. RMSZ is the root-mean-square of all Z scores of the bond lengths (or angles).

Mol	Chain	Bond lengths		Bond angles	
		RMSZ	# $ Z > 5$	RMSZ	# $ Z > 5$
1	A	0.54	0/3521	0.69	0/4754
1	B	0.55	0/3521	0.69	0/4754
1	C	0.54	0/3521	0.70	0/4754
All	All	0.54	0/10563	0.69	0/14262

There are no bond length outliers.

There are no bond angle outliers.

There are no chirality outliers.

There are no planarity outliers.

5.2 Too-close contacts

In the following table, the Non-H and H(model) columns list the number of non-hydrogen atoms and hydrogen atoms in the chain respectively. The H(added) column lists the number of hydrogen atoms added and optimized by MolProbity. The Clashes column lists the number of clashes within the asymmetric unit, whereas Symm-Clashes lists symmetry related clashes.

Mol	Chain	Non-H	H(model)	H(added)	Clashes	Symm-Clashes
1	A	3458	0	3477	66	0
1	B	3458	0	3477	64	0
1	C	3458	0	3477	64	1
2	A	20	0	11	1	0
2	B	20	0	11	2	0
2	C	20	0	11	1	0
3	A	33	0	0	0	0
3	B	33	0	0	0	0
3	C	33	0	0	0	0
4	A	1	0	0	0	0

Continued on next page...

Continued from previous page...

Mol	Chain	Non-H	H(model)	H(added)	Clashes	Symm-Clashes
4	C	1	0	0	0	0
5	A	110	0	0	1	0
5	B	110	0	0	1	0
5	C	110	0	0	6	1
All	All	10865	0	10464	190	1

The all-atom clashscore is defined as the number of clashes found per 1000 atoms (including hydrogen atoms). The all-atom clashscore for this structure is 9.

All (190) close contacts within the same asymmetric unit are listed below, sorted by their clash magnitude.

Atom-1	Atom-2	Interatomic distance (Å)	Clash overlap (Å)
1:C:53:LYS:NZ	5:C:601:HOH:O	1.90	0.99
1:C:167:ARG:NH1	5:C:602:HOH:O	2.04	0.89
1:C:22:GLU:OE1	1:C:26:ARG:NH2	2.06	0.88
1:B:315:GLN:O	1:B:334:LYS:NZ	2.13	0.79
1:B:174:LYS:HD3	1:B:201:VAL:HG13	1.63	0.79
1:B:120:MET:SD	1:B:169:MET:HE3	2.27	0.75
1:A:174:LYS:HD3	1:A:201:VAL:HG13	1.69	0.74
1:A:113:VAL:HG11	1:A:177:VAL:HG23	1.71	0.71
1:B:22:GLU:OE1	1:B:26:ARG:NH2	2.26	0.67
1:B:153:TYR:HB3	1:B:169:MET:CE	2.25	0.67
1:B:7:LEU:HA	1:B:10:ILE:HG22	1.77	0.66
1:C:184:SER:HB3	1:C:371:ARG:HD3	1.79	0.64
1:C:7:LEU:HA	1:C:10:ILE:CG2	2.29	0.63
1:B:405:GLN:CD	1:B:410:LYS:HD3	2.18	0.63
1:C:59:PRO:HA	1:C:71:ASP:OD1	1.99	0.62
1:C:6:PRO:O	1:C:10:ILE:HG22	1.98	0.62
1:A:7:LEU:HA	1:A:10:ILE:CG2	2.30	0.62
1:B:210:SER:HB3	1:B:234:THR:OG1	1.99	0.62
1:B:50:VAL:HG22	1:B:275:ASN:HB3	1.82	0.61
1:B:120:MET:HE2	1:B:178:ILE:HG12	1.81	0.61
1:C:120:MET:SD	1:C:169:MET:HE3	2.40	0.61
1:A:7:LEU:HA	1:A:10:ILE:HG22	1.83	0.59
1:A:398:ILE:O	1:A:402:VAL:HG23	2.03	0.59
1:B:183:THR:HB	2:B:501:PLG:O3	2.03	0.59
1:B:74:GLU:O	1:B:78:GLN:HG3	2.03	0.59
1:C:209:ILE:HD12	1:C:213:SER:HA	1.84	0.59
1:B:113:VAL:CG1	1:B:177:VAL:HG23	2.32	0.59
1:A:209:ILE:HD12	1:A:213:SER:HA	1.84	0.58
1:C:113:VAL:CG1	1:C:177:VAL:HG23	2.32	0.58

Continued on next page...

Continued from previous page...

Atom-1	Atom-2	Interatomic distance (Å)	Clash overlap (Å)
1:A:341:LYS:NZ	5:A:602:HOH:O	2.37	0.57
1:C:341:LYS:NZ	5:C:603:HOH:O	2.37	0.57
1:A:6:PRO:O	1:A:10:ILE:HG22	2.03	0.57
1:A:400:ILE:HG21	1:A:425:LEU:HD21	1.87	0.57
1:C:7:LEU:HA	1:C:10:ILE:HG22	1.87	0.57
1:A:22:GLU:OE1	1:A:26:ARG:NH2	2.39	0.56
1:C:109:LEU:O	1:C:113:VAL:HG22	2.05	0.56
1:C:235:THR:O	1:C:241:GLY:N	2.38	0.56
1:A:91:GLU:HG3	1:A:252:LYS:HB2	1.88	0.56
1:A:113:VAL:CG1	1:A:177:VAL:CG2	2.84	0.56
1:A:422:ASN:O	1:A:426:GLN:HG3	2.06	0.55
1:B:7:LEU:HA	1:B:10:ILE:CG2	2.37	0.55
1:B:153:TYR:HB3	1:B:169:MET:HE2	1.88	0.55
1:B:209:ILE:HD12	1:B:213:SER:HA	1.88	0.55
1:B:174:LYS:HD3	1:B:201:VAL:CG1	2.35	0.55
1:B:234:THR:HB	1:B:236:HIS:CE1	2.42	0.55
1:B:235:THR:O	1:B:241:GLY:N	2.36	0.55
1:C:120:MET:HE2	1:C:178:ILE:HG12	1.89	0.55
1:B:34:SER:OG	2:B:501:PLG:O	2.18	0.54
1:A:120:MET:SD	1:A:169:MET:HE3	2.48	0.54
1:C:234:THR:HB	1:C:236:HIS:CE1	2.42	0.54
1:A:127:GLY:O	1:A:182:TYR:HB3	2.08	0.54
1:A:210:SER:HB3	1:A:234:THR:OG1	2.08	0.54
1:C:396:ARG:CZ	1:C:428:LEU:HD13	2.37	0.54
1:C:153:TYR:HB3	1:C:169:MET:CE	2.38	0.53
1:A:234:THR:HB	1:A:236:HIS:CE1	2.44	0.53
1:C:113:VAL:HG12	1:C:176:LYS:HB2	1.90	0.53
1:A:109:LEU:HD21	1:A:179:ILE:HD11	1.90	0.53
1:A:50:VAL:HG22	1:A:275:ASN:HB3	1.90	0.53
1:C:226:LEU:HB2	1:C:227:HIS:CD2	2.43	0.53
1:B:167:ARG:HB2	1:B:197:ILE:CD1	2.39	0.53
1:A:113:VAL:CG1	1:A:177:VAL:HG23	2.38	0.52
1:C:91:GLU:HG3	1:C:252:LYS:HB2	1.90	0.52
1:A:226:LEU:HB2	1:A:227:HIS:CD2	2.45	0.52
1:C:113:VAL:HG11	1:C:177:VAL:HG23	1.92	0.52
1:B:102:SER:HA	1:B:131:THR:HG21	1.93	0.51
1:B:64:TYR:CD1	1:B:64:TYR:N	2.78	0.51
1:C:236:HIS:ND1	1:C:243:ARG:HA	2.26	0.51
1:A:7:LEU:CA	1:A:10:ILE:HG22	2.41	0.50
1:C:192:GLN:HG2	5:C:605:HOH:O	2.10	0.50
1:C:153:TYR:HB3	1:C:169:MET:HE2	1.93	0.50

Continued on next page...

Continued from previous page...

Atom-1	Atom-2	Interatomic distance (Å)	Clash overlap (Å)
1:C:64:TYR:N	1:C:64:TYR:CD1	2.79	0.50
1:A:64:TYR:CD1	1:A:64:TYR:N	2.79	0.49
1:B:398:ILE:O	1:B:402:VAL:HG23	2.11	0.49
1:C:400:ILE:HG21	1:C:425:LEU:HD21	1.95	0.49
1:C:398:ILE:O	1:C:402:VAL:HG23	2.12	0.49
1:A:427:GLN:HA	1:A:427:GLN:HE21	1.78	0.49
1:A:110:TYR:OH	1:B:146:ASP:OD2	2.26	0.49
1:A:113:VAL:HA	1:A:176:LYS:HE3	1.94	0.48
1:A:147:MET:HE2	1:A:148:PHE:CZ	2.49	0.48
1:B:195:ARG:HB2	1:B:227:HIS:HB3	1.96	0.48
1:B:153:TYR:HB3	1:B:169:MET:HE1	1.95	0.48
1:C:113:VAL:HA	1:C:176:LYS:HE2	1.95	0.47
1:B:39:ASN:OD1	1:B:42:VAL:HG23	2.14	0.47
1:C:129:HIS:HA	1:C:183:THR:HG21	1.95	0.47
1:C:380:ARG:O	1:C:440:PRO:HD2	2.14	0.47
1:B:181:GLY:HA3	1:B:208:ASP:O	2.15	0.47
1:C:192:GLN:HA	1:C:227:HIS:ND1	2.29	0.47
1:C:29:ILE:HD12	1:C:432:VAL:HG13	1.96	0.47
1:A:405:GLN:CD	1:A:410:LYS:HD3	2.35	0.47
1:B:113:VAL:HG11	1:B:177:VAL:HG23	1.95	0.47
1:C:349:ILE:HG13	1:C:351:VAL:HG23	1.97	0.47
1:B:109:LEU:HD21	1:B:179:ILE:HD11	1.96	0.47
1:B:192:GLN:HA	1:B:227:HIS:ND1	2.30	0.47
1:A:97:GLN:HB2	1:A:265:VAL:HG11	1.96	0.46
1:A:69:PHE:HB2	1:B:21:GLU:HG2	1.96	0.46
1:B:364:CYS:O	1:B:367:PRO:HD3	2.15	0.46
1:A:60:LYS:N	1:A:71:ASP:OD2	2.48	0.46
1:A:102:SER:HA	1:A:131:THR:HG21	1.96	0.46
1:A:27:GLU:HG2	1:A:433:VAL:HG13	1.95	0.46
1:A:131:THR:O	1:A:144:THR:HG21	2.16	0.46
1:A:129:HIS:HB2	1:A:183:THR:HG22	1.98	0.46
1:A:349:ILE:HG13	1:A:351:VAL:HG23	1.98	0.46
1:A:183:THR:HB	2:A:501:PLG:O3	2.16	0.45
1:A:327:LEU:C	1:A:327:LEU:HD12	2.37	0.45
1:B:218:CYS:HB3	1:B:294:LYS:HD2	1.98	0.45
1:C:183:THR:HB	2:C:501:PLG:O3	2.16	0.45
1:A:235:THR:O	1:A:241:GLY:N	2.43	0.45
1:C:113:VAL:HG12	1:C:176:LYS:CB	2.45	0.45
1:A:129:HIS:HA	1:A:183:THR:HG21	1.97	0.45
1:A:184:SER:HB3	1:A:371:ARG:HD3	1.98	0.45
1:C:89:ASP:C	1:C:89:ASP:OD1	2.55	0.45

Continued on next page...

Continued from previous page...

Atom-1	Atom-2	Interatomic distance (Å)	Clash overlap (Å)
1:A:147:MET:CE	1:A:148:PHE:CZ	3.00	0.45
1:C:364:CYS:O	1:C:367:PRO:HD3	2.17	0.45
1:B:64:TYR:HD1	1:B:64:TYR:N	2.14	0.45
1:A:427:GLN:O	1:A:427:GLN:NE2	2.50	0.45
1:B:427:GLN:HA	1:B:427:GLN:HE21	1.81	0.45
1:B:7:LEU:CA	1:B:10:ILE:HG22	2.46	0.44
1:B:174:LYS:CD	1:B:201:VAL:HG13	2.40	0.44
1:A:41:ALA:CB	1:B:10:ILE:HG21	2.47	0.44
1:C:7:LEU:HD12	1:C:7:LEU:O	2.16	0.44
1:B:97:GLN:HB2	1:B:265:VAL:HG11	2.00	0.44
1:B:327:LEU:HD12	1:B:327:LEU:C	2.38	0.44
1:B:374:THR:N	1:B:375:PRO:CD	2.80	0.44
1:C:404:LEU:CD1	1:C:419:LEU:HD23	2.47	0.44
1:A:374:THR:N	1:A:375:PRO:HD3	2.33	0.44
1:C:181:GLY:HA3	1:C:208:ASP:O	2.17	0.44
1:A:362:VAL:HG12	1:A:362:VAL:O	2.18	0.44
1:A:236:HIS:ND1	1:A:243:ARG:HA	2.33	0.44
1:C:64:TYR:N	1:C:64:TYR:HD1	2.16	0.44
1:A:39:ASN:OD1	1:A:42:VAL:HG23	2.18	0.43
1:B:50:VAL:HG22	1:B:275:ASN:CB	2.48	0.43
1:C:161:VAL:HG23	1:C:185:TYR:CZ	2.54	0.43
1:C:264:ALA:HA	1:C:268:SER:HB2	2.01	0.43
1:A:374:THR:N	1:A:375:PRO:CD	2.82	0.43
1:A:181:GLY:HA3	1:A:208:ASP:O	2.19	0.43
1:B:89:ASP:OD1	1:B:89:ASP:C	2.57	0.43
1:C:10:ILE:O	1:C:10:ILE:HD12	2.18	0.43
1:C:74:GLU:O	1:C:78:GLN:HG3	2.19	0.43
1:B:201:VAL:O	1:B:201:VAL:HG12	2.19	0.43
1:C:416:LYS:O	1:C:420:PRO:HD3	2.18	0.43
1:C:196:GLN:NE2	5:C:605:HOH:O	2.44	0.43
1:A:201:VAL:O	1:A:201:VAL:HG12	2.19	0.43
1:B:144:THR:O	1:B:148:PHE:HB2	2.19	0.43
1:C:7:LEU:CA	1:C:10:ILE:HG22	2.48	0.43
1:A:125:CYS:SG	1:A:364:CYS:SG	3.17	0.42
1:A:93:GLY:HA3	1:A:249:PHE:CE2	2.53	0.42
1:A:162:ASP:OD2	1:A:165:ALA:HB2	2.19	0.42
1:A:257:ILE:HD13	1:A:261:ILE:HG13	2.01	0.42
1:B:113:VAL:HG12	1:B:176:LYS:HB3	2.00	0.42
1:C:218:CYS:HB3	1:C:294:LYS:HD2	2.01	0.42
1:B:109:LEU:O	1:B:113:VAL:HG22	2.19	0.42
1:C:201:VAL:HG12	1:C:201:VAL:O	2.19	0.42

Continued on next page...

Continued from previous page...

Atom-1	Atom-2	Interatomic distance (Å)	Clash overlap (Å)
1:B:131:THR:O	1:B:144:THR:HG21	2.20	0.42
1:B:198:CYS:HB3	1:B:203:ALA:O	2.19	0.42
1:B:374:THR:N	1:B:375:PRO:HD3	2.34	0.42
1:C:27:GLU:HG2	1:C:433:VAL:HG13	2.01	0.42
1:A:215:PHE:CB	1:A:221:LEU:HD12	2.50	0.42
1:B:50:VAL:HG23	1:B:70:ILE:CD1	2.50	0.42
1:C:93:GLY:HA3	1:C:249:PHE:CE2	2.55	0.42
1:A:113:VAL:HG13	1:A:177:VAL:CG2	2.49	0.42
1:A:109:LEU:O	1:A:113:VAL:HG22	2.20	0.42
1:B:230:VAL:HG13	1:B:248:PHE:O	2.19	0.42
1:B:274:HIS:O	1:B:277:LYS:HB2	2.20	0.42
1:B:396:ARG:CZ	1:B:428:LEU:HD13	2.49	0.42
1:B:380:ARG:O	1:B:440:PRO:HD2	2.20	0.42
1:A:218:CYS:HB3	1:A:294:LYS:HD2	2.02	0.42
1:B:60:LYS:N	1:B:71:ASP:OD2	2.48	0.41
1:C:242:PRO:HG3	1:C:280:ALA:HB3	2.01	0.41
1:B:129:HIS:HA	1:B:183:THR:HG21	2.01	0.41
1:B:240:ARG:HD3	5:B:695:HOH:O	2.20	0.41
1:C:112:LEU:HD21	1:C:257:ILE:HD11	2.02	0.41
1:C:184:SER:HB3	1:C:371:ARG:CD	2.46	0.41
1:C:374:THR:N	1:C:375:PRO:CD	2.83	0.41
1:C:30:ASN:HA	1:C:352:SER:HB2	2.02	0.41
1:C:327:LEU:HD12	1:C:327:LEU:C	2.41	0.41
1:C:404:LEU:HD13	1:C:419:LEU:HD23	2.03	0.41
1:A:74:GLU:O	1:A:78:GLN:HG3	2.20	0.41
1:C:346:CYS:HA	1:C:349:ILE:HG12	2.03	0.41
1:A:11:ASP:OD2	1:B:80:ARG:NH1	2.50	0.41
1:A:195:ARG:HB2	1:A:227:HIS:HB3	2.03	0.41
1:B:182:TYR:HB2	1:B:185:TYR:HB2	2.03	0.40
1:A:218:CYS:HB2	1:A:220:ILE:CD1	2.51	0.40
1:A:227:HIS:CD2	1:A:227:HIS:N	2.90	0.40
1:B:59:PRO:O	1:B:60:LYS:HB2	2.21	0.40
1:C:129:HIS:HB2	1:C:183:THR:HG22	2.02	0.40
1:C:64:TYR:HD2	5:C:601:HOH:O	2.05	0.40
1:C:226:LEU:HB2	1:C:227:HIS:HD2	1.82	0.40
1:A:120:MET:HG2	1:A:169:MET:HE3	2.04	0.40
1:A:59:PRO:O	1:A:60:LYS:HB2	2.22	0.40
1:B:59:PRO:HA	1:B:71:ASP:OD2	2.21	0.40

All (1) symmetry-related close contacts are listed below. The label for Atom-2 includes the symmetry operator and encoded unit-cell translations to be applied.

Atom-1	Atom-2	Interatomic distance (Å)	Clash overlap (Å)
1:C:35:GLU:OE2	5:C:601:HOH:O[2_656]	2.19	0.01

5.3 Torsion angles [i](#)

5.3.1 Protein backbone [i](#)

In the following table, the Percentiles column shows the percent Ramachandran outliers of the chain as a percentile score with respect to all X-ray entries followed by that with respect to entries of similar resolution.

The Analysed column shows the number of residues for which the backbone conformation was analysed, and the total number of residues.

Mol	Chain	Analysed	Favoured	Allowed	Outliers	Percentiles	
1	A	440/442 (100%)	430 (98%)	10 (2%)	0	100	100
1	B	440/442 (100%)	429 (98%)	11 (2%)	0	100	100
1	C	440/442 (100%)	430 (98%)	10 (2%)	0	100	100
All	All	1320/1326 (100%)	1289 (98%)	31 (2%)	0	100	100

There are no Ramachandran outliers to report.

5.3.2 Protein sidechains [i](#)

In the following table, the Percentiles column shows the percent sidechain outliers of the chain as a percentile score with respect to all X-ray entries followed by that with respect to entries of similar resolution.

The Analysed column shows the number of residues for which the sidechain conformation was analysed, and the total number of residues.

Mol	Chain	Analysed	Rotameric	Outliers	Percentiles	
1	A	381/381 (100%)	354 (93%)	27 (7%)	17	22
1	B	381/381 (100%)	356 (93%)	25 (7%)	19	25
1	C	381/381 (100%)	351 (92%)	30 (8%)	14	18
All	All	1143/1143 (100%)	1061 (93%)	82 (7%)	17	21

All (82) residues with a non-rotameric sidechain are listed below:

Mol	Chain	Res	Type
1	A	7	LEU
1	A	10	ILE
1	A	21	GLU
1	A	22	GLU
1	A	54	TYR
1	A	62	ARG
1	A	100	SER
1	A	138	LYS
1	A	139	LYS
1	A	167	ARG
1	A	172	SER
1	A	183	THR
1	A	184	SER
1	A	240	ARG
1	A	250	ASN
1	A	252	LYS
1	A	253	ARG
1	A	254	ASN
1	A	257	ILE
1	A	263	SER
1	A	268	SER
1	A	295	GLU
1	A	327	LEU
1	A	340	SER
1	A	411	LYS
1	A	427	GLN
1	A	430	GLN
1	B	21	GLU
1	B	22	GLU
1	B	26	ARG
1	B	54	TYR
1	B	55	SER
1	B	62	ARG
1	B	71	ASP
1	B	100	SER
1	B	139	LYS
1	B	169	MET
1	B	183	THR
1	B	184	SER
1	B	240	ARG
1	B	250	ASN
1	B	253	ARG
1	B	254	ASN

Continued on next page...

Continued from previous page...

Mol	Chain	Res	Type
1	B	263	SER
1	B	309	LYS
1	B	327	LEU
1	B	340	SER
1	B	347	ASN
1	B	352	SER
1	B	406	GLU
1	B	413	VAL
1	B	427	GLN
1	C	7	LEU
1	C	21	GLU
1	C	22	GLU
1	C	54	TYR
1	C	62	ARG
1	C	64	TYR
1	C	89	ASP
1	C	90	GLU
1	C	100	SER
1	C	138	LYS
1	C	139	LYS
1	C	151	LYS
1	C	167	ARG
1	C	172	SER
1	C	183	THR
1	C	184	SER
1	C	240	ARG
1	C	250	ASN
1	C	252	LYS
1	C	254	ASN
1	C	263	SER
1	C	268	SER
1	C	327	LEU
1	C	340	SER
1	C	352	SER
1	C	362	VAL
1	C	385	LYS
1	C	399	LYS
1	C	411	LYS
1	C	413	VAL

Some sidechains can be flipped to improve hydrogen bonding and reduce clashes. All (16) such sidechains are listed below:

Mol	Chain	Res	Type
1	A	196	GLN
1	A	227	HIS
1	A	289	HIS
1	A	347	ASN
1	A	426	GLN
1	A	427	GLN
1	B	196	GLN
1	B	227	HIS
1	B	299	GLN
1	B	321	ASN
1	B	424	GLN
1	B	427	GLN
1	C	78	GLN
1	C	196	GLN
1	C	227	HIS
1	C	347	ASN

5.3.3 RNA [i](#)

There are no RNA molecules in this entry.

5.4 Non-standard residues in protein, DNA, RNA chains [i](#)

There are no non-standard protein/DNA/RNA residues in this entry.

5.5 Carbohydrates [i](#)

There are no carbohydrates in this entry.

5.6 Ligand geometry [i](#)

Of 8 ligands modelled in this entry, 2 are monoatomic - leaving 6 for Mogul analysis.

In the following table, the Counts columns list the number of bonds (or angles) for which Mogul statistics could be retrieved, the number of bonds (or angles) that are observed in the model and the number of bonds (or angles) that are defined in the Chemical Component Dictionary. The Link column lists molecule types, if any, to which the group is linked. The Z score for a bond length (or angle) is the number of standard deviations the observed value is removed from the expected value. A bond length (or angle) with $|Z| > 2$ is considered an outlier worth inspection. RMSZ is the root-mean-square of all Z scores of the bond lengths (or angles).

Mol	Type	Chain	Res	Link	Bond lengths			Bond angles		
					Counts	RMSZ	# Z > 2	Counts	RMSZ	# Z > 2
2	PLG	A	501	-	17,20,20	3.36	3 (17%)	23,28,28	1.91	8 (34%)
3	8B3	A	502	-	31,36,36	2.56	2 (6%)	38,56,56	2.02	9 (23%)
2	PLG	B	501	-	17,20,20	3.72	3 (17%)	23,28,28	2.35	8 (34%)
3	8B3	B	502	-	31,36,36	2.45	2 (6%)	38,56,56	1.96	7 (18%)
2	PLG	C	501	-	17,20,20	3.53	3 (17%)	23,28,28	2.02	8 (34%)
3	8B3	C	502	-	31,36,36	2.47	2 (6%)	38,56,56	1.61	6 (15%)

In the following table, the Chirals column lists the number of chiral outliers, the number of chiral centers analysed, the number of these observed in the model and the number defined in the Chemical Component Dictionary. Similar counts are reported in the Torsion and Rings columns. '-' means no outliers of that kind were identified.

Mol	Type	Chain	Res	Link	Chirals	Torsions	Rings
2	PLG	A	501	-	-	0/10/12/12	0/1/1/1
3	8B3	A	502	-	-	0/22/44/44	0/4/4/4
2	PLG	B	501	-	-	0/10/12/12	0/1/1/1
3	8B3	B	502	-	-	0/22/44/44	0/4/4/4
2	PLG	C	501	-	-	0/10/12/12	0/1/1/1
3	8B3	C	502	-	-	0/22/44/44	0/4/4/4

All (15) bond length outliers are listed below:

Mol	Chain	Res	Type	Atoms	Z	Observed(Å)	Ideal(Å)
3	A	502	8B3	C8-C3	-12.10	1.25	1.42
3	C	502	8B3	C8-C3	-11.71	1.26	1.42
3	B	502	8B3	C8-C3	-11.34	1.26	1.42
2	C	501	PLG	C3-C4	4.40	1.47	1.40
2	B	501	PLG	C3-C4	4.74	1.47	1.40
2	A	501	PLG	C3-C4	5.52	1.48	1.40
2	A	501	PLG	C5-C4	5.90	1.48	1.40
3	C	502	8B3	O1-C2	6.20	1.44	1.36
2	B	501	PLG	C5-C4	6.30	1.49	1.40
2	C	501	PLG	C5-C4	6.50	1.49	1.40
3	A	502	8B3	O1-C2	6.52	1.44	1.36
3	B	502	8B3	O1-C2	6.88	1.45	1.36
2	A	501	PLG	C3-C2	10.97	1.48	1.40
2	C	501	PLG	C3-C2	11.89	1.49	1.40
2	B	501	PLG	C3-C2	12.65	1.49	1.40

All (46) bond angle outliers are listed below:

Mol	Chain	Res	Type	Atoms	Z	Observed(°)	Ideal(°)
3	B	502	8B3	C3-C2-N7	-4.98	122.57	127.58
3	A	502	8B3	C3-C2-N7	-4.92	122.62	127.58
2	B	501	PLG	C3-C4-C5	-3.95	114.81	118.71
3	C	502	8B3	C3-C2-N7	-3.90	123.65	127.58
3	A	502	8B3	C40-C39-C32	-2.93	120.33	123.58
3	C	502	8B3	C40-C39-C32	-2.84	120.43	123.58
2	C	501	PLG	C3-C4-C5	-2.69	116.06	118.71
2	A	501	PLG	C3-C2-N1	-2.69	117.22	120.75
2	B	501	PLG	OP3-P-OP4	-2.60	99.83	106.73
3	B	502	8B3	C40-C39-C32	-2.54	120.76	123.58
2	A	501	PLG	OP3-P-OP4	-2.32	100.57	106.73
2	A	501	PLG	C3-C4-C5	-2.22	116.52	118.71
3	A	502	8B3	C19-C32-C39	-2.06	120.36	123.02
2	C	501	PLG	OP3-P-OP4	-2.05	101.28	106.73
3	A	502	8B3	F47-C33-F46	2.02	113.17	105.70
2	B	501	PLG	C4-C4A-N	2.05	115.46	111.91
2	A	501	PLG	C4A-C4-C3	2.05	121.91	119.65
2	A	501	PLG	OP3-P-OP2	2.05	115.89	107.61
2	C	501	PLG	C6-C5-C4	2.17	119.74	118.13
2	B	501	PLG	C6-N1-C2	2.20	123.49	119.26
3	B	502	8B3	F48-C33-F46	2.25	114.01	105.70
3	A	502	8B3	C6-O1-C2	2.27	120.72	118.48
3	C	502	8B3	C8-C3-C2	2.49	121.01	117.82
3	C	502	8B3	C5-C4-C3	2.51	110.12	104.33
2	C	501	PLG	OP3-P-OP2	2.53	117.80	107.61
3	B	502	8B3	C5-C4-C3	2.56	110.22	104.33
2	A	501	PLG	OP4-C5A-C5	2.66	114.66	109.32
3	A	502	8B3	C5-C4-C3	2.77	110.72	104.33
3	C	502	8B3	C43-C32-C39	2.80	118.86	115.87
2	C	501	PLG	OP4-C5A-C5	2.84	115.02	109.32
2	C	501	PLG	C6-N1-C2	3.01	125.05	119.26
2	B	501	PLG	CA-N-C4A	3.01	118.91	112.18
3	B	502	8B3	C43-C32-C39	3.04	119.11	115.87
3	A	502	8B3	C8-C3-C2	3.26	122.00	117.82
3	B	502	8B3	C8-C3-C2	3.33	122.09	117.82
2	A	501	PLG	C6-N1-C2	3.44	125.89	119.26
2	A	501	PLG	CA-N-C4A	3.76	120.57	112.18
2	C	501	PLG	C4A-C4-C5	3.77	123.21	119.75
2	B	501	PLG	C6-C5-C4	3.94	121.06	118.13
3	A	502	8B3	C43-C32-C39	3.97	120.11	115.87
2	C	501	PLG	CA-N-C4A	4.41	122.03	112.18
2	B	501	PLG	OP4-C5A-C5	5.04	119.45	109.32
2	B	501	PLG	C4A-C4-C5	5.37	124.67	119.75

Continued on next page...

Continued from previous page...

Mol	Chain	Res	Type	Atoms	Z	Observed(°)	Ideal(°)
3	C	502	8B3	O1-C2-N7	5.41	114.30	110.21
3	A	502	8B3	O1-C2-N7	7.04	115.53	110.21
3	B	502	8B3	O1-C2-N7	7.33	115.75	110.21

There are no chirality outliers.

There are no torsion outliers.

There are no ring outliers.

3 monomers are involved in 4 short contacts:

Mol	Chain	Res	Type	Clashes	Symm-Clashes
2	A	501	PLG	1	0
2	B	501	PLG	2	0
2	C	501	PLG	1	0

5.7 Other polymers [i](#)

There are no such residues in this entry.

5.8 Polymer linkage issues [i](#)

There are no chain breaks in this entry.

6 Fit of model and data ⓘ

6.1 Protein, DNA and RNA chains ⓘ

In the following table, the column labelled ‘#RSRZ> 2’ contains the number (and percentage) of RSRZ outliers, followed by percent RSRZ outliers for the chain as percentile scores relative to all X-ray entries and entries of similar resolution. The OWAB column contains the minimum, median, 95th percentile and maximum values of the occupancy-weighted average B-factor per residue. The column labelled ‘Q< 0.9’ lists the number of (and percentage) of residues with an average occupancy less than 0.9.

Mol	Chain	Analysed	<RSRZ>	#RSRZ>2	OWAB(Å ²)	Q<0.9
1	A	442/442 (100%)	0.13	7 (1%) 72 70	20, 32, 53, 76	0
1	B	442/442 (100%)	0.04	7 (1%) 72 70	19, 32, 50, 74	0
1	C	442/442 (100%)	0.05	6 (1%) 75 74	19, 32, 52, 79	0
All	All	1326/1326 (100%)	0.07	20 (1%) 74 72	19, 32, 52, 79	0

All (20) RSRZ outliers are listed below:

Mol	Chain	Res	Type	RSRZ
1	C	419	LEU	4.7
1	A	419	LEU	3.6
1	C	423	ALA	3.6
1	A	414	ASP	3.2
1	A	256	GLY	3.0
1	C	421	GLY	3.0
1	B	419	LEU	2.7
1	C	366	SER	2.6
1	A	138	LYS	2.6
1	A	363	ASP	2.6
1	B	365	VAL	2.5
1	B	202	ASN	2.4
1	C	365	VAL	2.3
1	B	366	SER	2.2
1	A	257	ILE	2.2
1	A	202	ASN	2.2
1	C	256	GLY	2.1
1	B	364	CYS	2.1
1	B	138	LYS	2.1
1	B	219	ASN	2.0

6.2 Non-standard residues in protein, DNA, RNA chains [i](#)

There are no non-standard protein/DNA/RNA residues in this entry.

6.3 Carbohydrates [i](#)

There are no carbohydrates in this entry.

6.4 Ligands [i](#)

In the following table, the Atoms column lists the number of modelled atoms in the group and the number defined in the chemical component dictionary. LLDF column lists the quality of electron density of the group with respect to its neighbouring residues in protein, DNA or RNA chains. The B-factors column lists the minimum, median, 95th percentile and maximum values of B factors of atoms in the group. The column labelled 'Q< 0.9' lists the number of atoms with occupancy less than 0.9.

Mol	Type	Chain	Res	Atoms	RSCC	RSR	LLDF	B-factors(\AA^2)	Q<0.9
2	PLG	C	501	20/20	0.95	0.15	0.38	19,25,29,30	0
2	PLG	A	501	20/20	0.94	0.16	0.31	19,24,27,29	0
3	8B3	B	502	33/33	0.94	0.15	-0.27	25,27,30,32	0
3	8B3	A	502	33/33	0.94	0.14	-0.51	23,25,29,33	0
2	PLG	B	501	20/20	0.95	0.13	-0.56	21,26,28,29	0
3	8B3	C	502	33/33	0.92	0.14	-0.57	24,25,29,34	0
4	CL	A	503	1/1	0.86	0.09	-2.04	33,33,33,33	0
4	CL	C	503	1/1	0.88	0.15	-	31,31,31,31	1

6.5 Other polymers [i](#)

There are no such residues in this entry.