



Full wwPDB X-ray Structure Validation Report ⓘ

Feb 14, 2017 – 01:02 pm GMT

PDB ID : 4XPA
Title : X-ray structure of Drosophila dopamine transporter bound to 3,4dichlorophenethylamine
Authors : Aravind, P.; Wang, K.; Gouaux, E.
Deposited on : 2015-01-16
Resolution : 2.95 Å(reported)

This is a Full wwPDB X-ray Structure Validation Report for a publicly released PDB entry.

We welcome your comments at validation@mail.wwpdb.org

A user guide is available at

<http://wwpdb.org/validation/2016/XrayValidationReportHelp>

with specific help available everywhere you see the ⓘ symbol.

The following versions of software and data (see [references ⓘ](#)) were used in the production of this report:

MolProbity : 4.02b-467
Mogul : 1.7.2 (RC1), CSD as538be (2017)
Xtriage (Phenix) : 1.9-1692
EDS : trunk28620
Percentile statistics : 20161228.v01 (using entries in the PDB archive December 28th 2016)
Refmac : 5.8.0135
CCP4 : 6.5.0
Ideal geometry (proteins) : Engh & Huber (2001)
Ideal geometry (DNA, RNA) : Parkinson et al. (1996)
Validation Pipeline (wwPDB-VP) : recalc28949

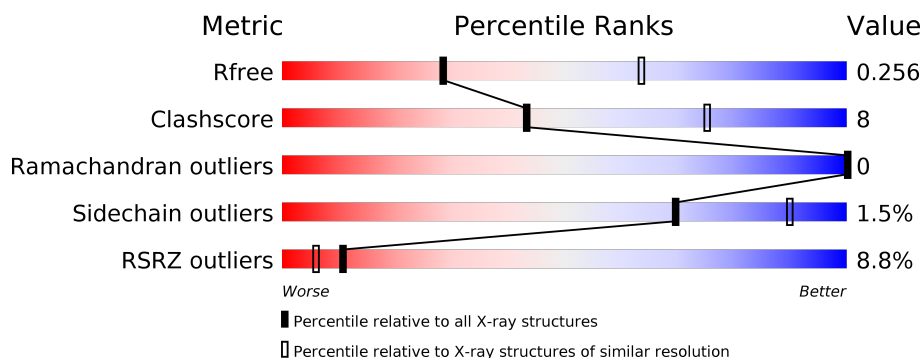
1 Overall quality at a glance ⓘ

The following experimental techniques were used to determine the structure:

X-RAY DIFFRACTION

The reported resolution of this entry is 2.95 Å.

Percentile scores (ranging between 0-100) for global validation metrics of the entry are shown in the following graphic. The table shows the number of entries on which the scores are based.



Metric	Whole archive (#Entries)	Similar resolution (#Entries, resolution range(Å))
R_{free}	100719	2395 (3.00-2.92)
Clashscore	112137	2773 (3.00-2.92)
Ramachandran outliers	110173	2680 (3.00-2.92)
Sidechain outliers	110143	2683 (3.00-2.92)
RSRZ outliers	101464	2421 (3.00-2.92)

The table below summarises the geometric issues observed across the polymeric chains and their fit to the electron density. The red, orange, yellow and green segments on the lower bar indicate the fraction of residues that contain outliers for ≥ 3 , 2, 1 and 0 types of geometric quality criteria. A grey segment represents the fraction of residues that are not modelled. The numeric value for each fraction is indicated below the corresponding segment, with a dot representing fractions $\leq 5\%$. The upper red bar (where present) indicates the fraction of residues that have poor fit to the electron density. The numeric value is given above the bar.

Mol	Chain	Length	Quality of chain
1	A	545	<div> <div>9%</div> <div> <div></div> <div>77%</div> <div>20%</div> <div>••</div> </div> </div>
2	L	237	<div> <div>8%</div> <div> <div></div> <div>76%</div> <div>14%</div> <div>• 10%</div> </div> </div>
3	H	240	<div> <div>7%</div> <div> <div></div> <div>74%</div> <div>17%</div> <div>9%</div> </div> </div>

The following table lists non-polymeric compounds, carbohydrate monomers and non-standard residues in protein, DNA, RNA chains that are outliers for geometric or electron-density-fit criteria:

Mol	Type	Chain	Res	Chirality	Geometry	Clashes	Electron density
4	CLR	A	701	-	-	-	X
4	CLR	A	702	-	-	-	X

2 Entry composition [i](#)

There are 9 unique types of molecules in this entry. The entry contains 7585 atoms, of which 0 are hydrogens and 0 are deuteriums.

In the tables below, the ZeroOcc column contains the number of atoms modelled with zero occupancy, the AltConf column contains the number of residues with at least one atom in alternate conformation and the Trace column contains the number of residues modelled with at most 2 atoms.

- Molecule 1 is a protein called Transporter.

Mol	Chain	Residues	Atoms					ZeroOcc	AltConf	Trace
1	A	534	Total	C	N	O	S	0	1	0
			4231	2836	657	719	19			

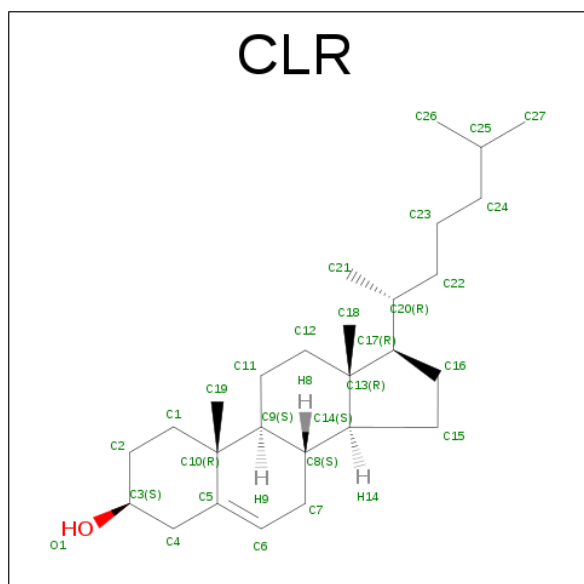
- Molecule 2 is a protein called Antibody fragment heavy chain-protein, 9D5-heavy chain.

Mol	Chain	Residues	Atoms					ZeroOcc	AltConf	Trace
2	L	214	Total	C	N	O	S	0	0	0
			1629	1012	271	338	8			

- Molecule 3 is a protein called Antibody fragment light chain-protein, 9D5-light chain.

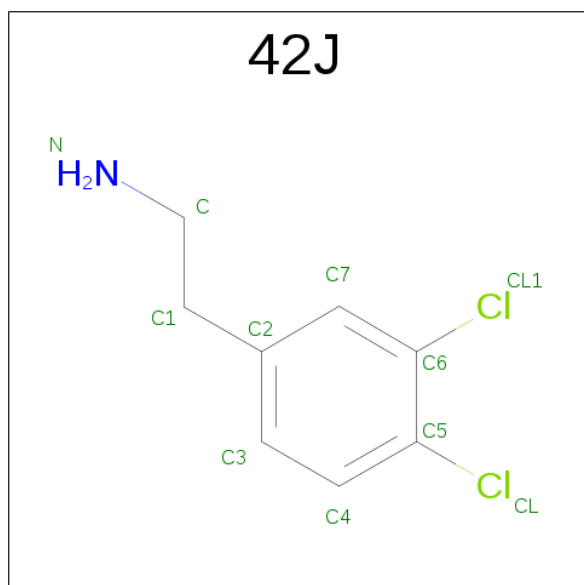
Mol	Chain	Residues	Atoms					ZeroOcc	AltConf	Trace
3	H	219	Total	C	N	O	S	0	0	0
			1619	1019	274	318	8			

- Molecule 4 is CHOLESTEROL (three-letter code: CLR) (formula: C₂₇H₄₆O).



Mol	Chain	Residues	Atoms			ZeroOcc	AltConf
4	A	1	Total	C	O	0	0
			28	27	1		
4	A	1	Total	C	O	0	0
			28	27	1		

- Molecule 5 is 2-(3,4-dichlorophenyl)ethanamine (three-letter code: 42J) (formula: $C_8H_9Cl_2N$).



Mol	Chain	Residues	Atoms				ZeroOcc	AltConf
5	A	1	Total	C	Cl	N	0	0
			11	8	2	1		

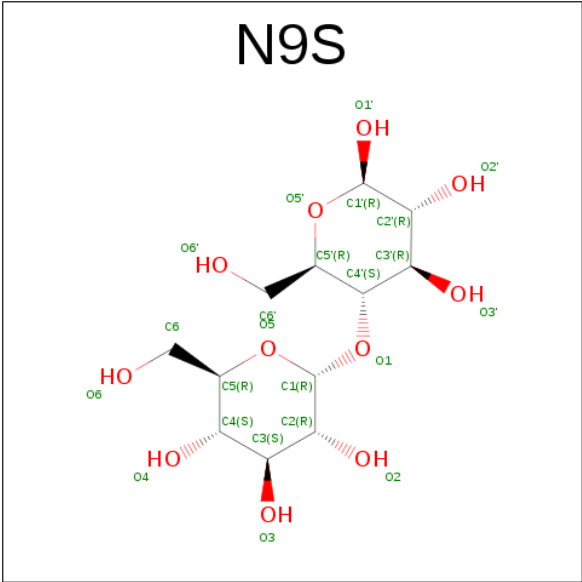
- Molecule 6 is CHLORIDE ION (three-letter code: CL) (formula: Cl).

Mol	Chain	Residues	Atoms		ZeroOcc	AltConf
6	A	1	Total	Cl	0	0
			1	1		

- Molecule 7 is SODIUM ION (three-letter code: NA) (formula: Na).

Mol	Chain	Residues	Atoms		ZeroOcc	AltConf
7	A	2	Total	Na	0	0
			2	2		

- Molecule 8 is 4-O-alpha-D-Glucopyranosyl-beta-D-glucopyranose (three-letter code: N9S) (formula: $C_{12}H_{22}O_{11}$).



Mol	Chain	Residues	Atoms			ZeroOcc	AltConf
8	A	1	Total	C	O	0	0
			23	12	11		

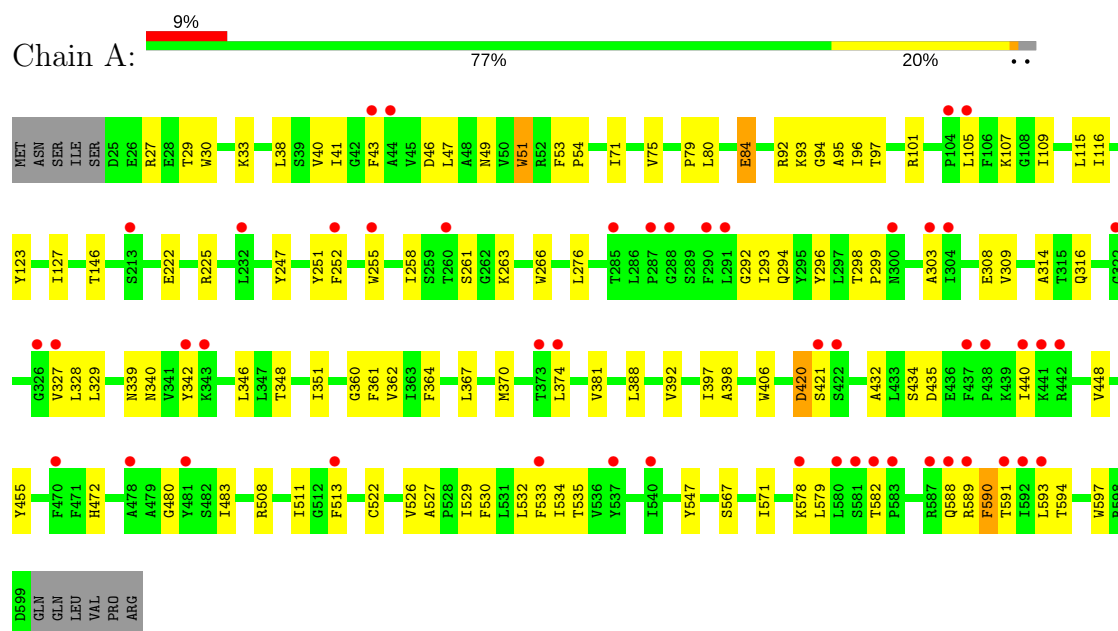
- Molecule 9 is water.

Mol	Chain	Residues	Atoms		ZeroOcc	AltConf
9	A	13	Total	O	0	0
			13	13		

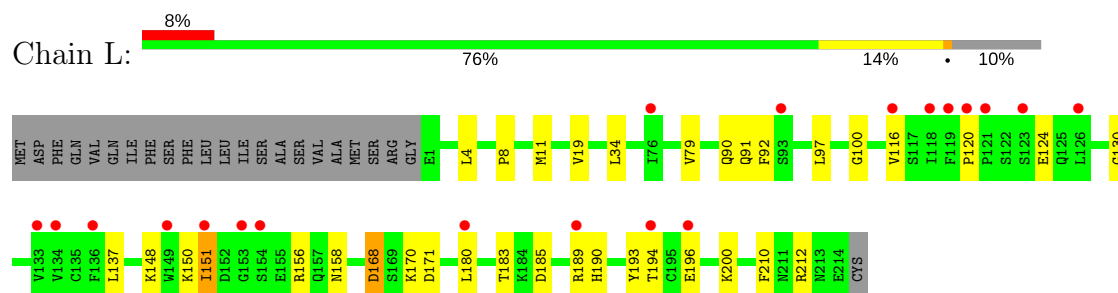
3 Residue-property plots [i](#)

These plots are drawn for all protein, RNA and DNA chains in the entry. The first graphic for a chain summarises the proportions of the various outlier classes displayed in the second graphic. The second graphic shows the sequence view annotated by issues in geometry and electron density. Residues are color-coded according to the number of geometric quality criteria for which they contain at least one outlier: green = 0, yellow = 1, orange = 2 and red = 3 or more. A red dot above a residue indicates a poor fit to the electron density ($RSRZ > 2$). Stretches of 2 or more consecutive residues without any outlier are shown as a green connector. Residues present in the sample, but not in the model, are shown in grey.

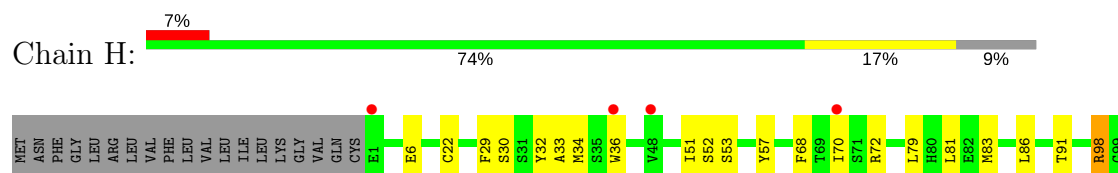
• Molecule 1: Transporter

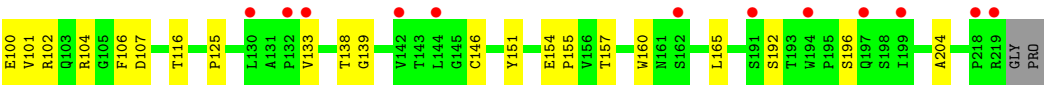


• Molecule 2: Antibody fragment heavy chain-protein, 9D5-heavy chain



• Molecule 3: Antibody fragment light chain-protein, 9D5-light chain





4 Data and refinement statistics

Property	Value	Source
Space group	P 21 21 21	Depositor
Cell constants a, b, c, α , β , γ	96.34Å 140.12Å 165.02Å 90.00° 90.00° 90.00°	Depositor
Resolution (Å)	48.17 – 2.95 48.17 – 2.95	Depositor EDS
% Data completeness (in resolution range)	94.2 (48.17-2.95) 87.0 (48.17-2.95)	Depositor EDS
R_{merge}	0.09	Depositor
R_{sym}	(Not available)	Depositor
$\langle I/\sigma(I) \rangle$ ¹	1.76 (at 2.96Å)	Xtriage
Refinement program	PHENIX	Depositor
R, R_{free}	0.230 , 0.255 0.230 , 0.256	Depositor DCC
R_{free} test set	1999 reflections (4.46%)	DCC
Wilson B-factor (Å ²)	75.0	Xtriage
Anisotropy	0.122	Xtriage
Bulk solvent k_{sol} (e/Å ³), B_{sol} (Å ²)	0.28 , 29.7	EDS
L-test for twinning ²	$\langle L \rangle = 0.50$, $\langle L^2 \rangle = 0.33$	Xtriage
Estimated twinning fraction	No twinning to report.	Xtriage
F_o, F_c correlation	0.88	EDS
Total number of atoms	7585	wwPDB-VP
Average B, all atoms (Å ²)	79.0	wwPDB-VP

Xtriage's analysis on translational NCS is as follows: *The largest off-origin peak in the Patterson function is 3.80% of the height of the origin peak. No significant pseudotranslation is detected.*

¹Intensities estimated from amplitudes.

²Theoretical values of $\langle |L| \rangle$, $\langle L^2 \rangle$ for acentric reflections are 0.5, 0.333 respectively for untwinned datasets, and 0.375, 0.2 for perfectly twinned datasets.

5 Model quality [i](#)

5.1 Standard geometry [i](#)

Bond lengths and bond angles in the following residue types are not validated in this section: NA, N9S, 42J, CLR, CL

The Z score for a bond length (or angle) is the number of standard deviations the observed value is removed from the expected value. A bond length (or angle) with $|Z| > 5$ is considered an outlier worth inspection. RMSZ is the root-mean-square of all Z scores of the bond lengths (or angles).

Mol	Chain	Bond lengths		Bond angles	
		RMSZ	$\# Z > 5$	RMSZ	$\# Z > 5$
1	A	0.26	0/4376	0.45	0/5977
2	L	0.29	0/1667	0.45	0/2266
3	H	0.28	0/1658	0.46	0/2264
All	All	0.27	0/7701	0.45	0/10507

Chiral center outliers are detected by calculating the chiral volume of a chiral center and verifying if the center is modelled as a planar moiety or with the opposite hand. A planarity outlier is detected by checking planarity of atoms in a peptide group, atoms in a mainchain group or atoms of a sidechain that are expected to be planar.

Mol	Chain	#Chirality outliers	#Planarity outliers
3	H	0	1

There are no bond length outliers.

There are no bond angle outliers.

There are no chirality outliers.

All (1) planarity outliers are listed below:

Mol	Chain	Res	Type	Group
3	H	98	ARG	Peptide

5.2 Too-close contacts [i](#)

In the following table, the Non-H and H(model) columns list the number of non-hydrogen atoms and hydrogen atoms in the chain respectively. The H(added) column lists the number of hydrogen atoms added and optimized by MolProbity. The Clashes column lists the number of clashes within the asymmetric unit, whereas Symm-Clashes lists symmetry related clashes.

Mol	Chain	Non-H	H(model)	H(added)	Clashes	Symm-Clashes
1	A	4231	0	4156	67	0
2	L	1629	0	1538	25	0
3	H	1619	0	1546	27	0
4	A	56	0	92	3	0
5	A	11	0	9	0	0
6	A	1	0	0	0	0
7	A	2	0	0	0	0
8	A	23	0	22	0	0
9	A	13	0	0	0	0
All	All	7585	0	7363	115	0

The all-atom clashscore is defined as the number of clashes found per 1000 atoms (including hydrogen atoms). The all-atom clashscore for this structure is 8.

All (115) close contacts within the same asymmetric unit are listed below, sorted by their clash magnitude.

Atom-1	Atom-2	Interatomic distance (Å)	Clash overlap (Å)
2:L:151:ILE:O	2:L:151:ILE:HG12	1.75	0.86
1:A:258:ILE:HA	1:A:261:SER:HB3	1.64	0.78
2:L:151:ILE:O	2:L:151:ILE:CG1	2.32	0.78
1:A:420:ASP:N	1:A:420:ASP:OD1	2.22	0.73
2:L:92:PHE:HD2	3:H:102:ARG:HA	1.52	0.72
3:H:138:THR:HG22	3:H:139:GLY:HA3	1.71	0.71
1:A:116:ILE:HG21	1:A:483:ILE:HD13	1.75	0.69
1:A:364:PHE:HA	1:A:367:LEU:HB2	1.74	0.69
1:A:370:MET:HG2	1:A:374:LEU:HD12	1.75	0.69
1:A:27:ARG:NH1	1:A:92:ARG:O	2.26	0.68
1:A:222:GLU:HB3	1:A:225:ARG:HD2	1.76	0.67
1:A:582:THR:O	1:A:589:ARG:NH2	2.28	0.66
1:A:146:THR:HG22	1:A:398:ALA:HB1	1.76	0.66
1:A:508:ARG:NE	3:H:100:GLU:O	2.30	0.65
3:H:157:THR:HB	3:H:204:ALA:HB3	1.79	0.64
1:A:43:PHE:HA	1:A:421:SER:HA	1.80	0.64
3:H:32:TYR:O	3:H:72:ARG:NH2	2.30	0.64
2:L:116:VAL:HG22	2:L:137:LEU:HD22	1.82	0.62
1:A:75:VAL:HB	1:A:526:VAL:HG11	1.81	0.62
1:A:95:ALA:HA	1:A:329:LEU:HD23	1.83	0.61
1:A:513:PHE:HB3	3:H:101:VAL:HG13	1.83	0.61
1:A:40:VAL:HG12	1:A:348:THR:HG21	1.82	0.60
1:A:107:LYS:HD3	1:A:578:LYS:HE3	1.85	0.58
3:H:98:ARG:NH1	3:H:107:ASP:OD2	2.37	0.58
3:H:29:PHE:O	3:H:72:ARG:NH2	2.34	0.57

Continued on next page...

Continued from previous page...

Atom-1	Atom-2	Interatomic distance (Å)	Clash overlap (Å)
2:L:148:LYS:HB3	2:L:196:GLU:HG2	1.86	0.57
2:L:92:PHE:CD2	3:H:102:ARG:HA	2.39	0.56
3:H:34:MET:HB3	3:H:79:LEU:HD22	1.88	0.55
1:A:579:LEU:O	1:A:589:ARG:NH2	2.40	0.55
1:A:38:LEU:HD13	1:A:266:TRP:HA	1.89	0.54
2:L:90:GLN:HG2	2:L:91:GLN:N	2.23	0.54
1:A:340:ASN:HA	1:A:511:ILE:HG22	1.90	0.54
1:A:293:ILE:HD12	1:A:361:PHE:HD1	1.73	0.54
1:A:41:ILE:HD13	1:A:348:THR:HG23	1.89	0.53
1:A:94:GLY:HA3	1:A:432:ALA:HA	1.90	0.53
3:H:51:ILE:HD13	3:H:72:ARG:HB2	1.91	0.53
3:H:52:SER:HB3	3:H:57:TYR:HB2	1.91	0.53
3:H:68:PHE:HB3	3:H:81:LEU:HD11	1.91	0.52
2:L:92:PHE:HZ	3:H:106:PHE:CZ	2.28	0.52
1:A:46:ASP:N	1:A:49:ASN:OD1	2.29	0.52
2:L:92:PHE:CE1	2:L:97:LEU:HD13	2.45	0.51
1:A:251:TYR:CE1	1:A:448:VAL:HG23	2.45	0.51
2:L:124:GLU:N	2:L:124:GLU:OE1	2.40	0.51
1:A:53:PHE:HB3	1:A:54:PRO:HD3	1.93	0.50
1:A:296:TYR:CZ	1:A:360:GLY:HA3	2.46	0.50
2:L:156:ARG:NH1	2:L:158:ASN:O	2.45	0.50
2:L:150:LYS:HB2	2:L:194:THR:HB	1.93	0.50
1:A:252:PHE:HA	1:A:255:TRP:HB2	1.92	0.50
1:A:96:ILE:HG13	1:A:432:ALA:HB1	1.92	0.49
1:A:51:TRP:HH2	1:A:127:ILE:HD13	1.76	0.49
1:A:51:TRP:HA	1:A:388:LEU:HD23	1.92	0.49
1:A:75:VAL:O	1:A:79:PRO:HG2	2.11	0.49
2:L:4:LEU:HB2	2:L:100:GLY:HA2	1.94	0.49
2:L:130:GLY:HA2	2:L:183:THR:HA	1.94	0.49
1:A:303:ALA:HB1	1:A:309:VAL:HG21	1.94	0.49
1:A:47:LEU:HD13	1:A:127:ILE:HG21	1.95	0.49
2:L:190:HIS:O	2:L:212:ARG:HD3	2.12	0.49
1:A:109:ILE:HA	1:A:571:ILE:HG12	1.95	0.49
1:A:80:LEU:HD11	1:A:527:ALA:HB1	1.94	0.49
1:A:27:ARG:HG2	1:A:92:ARG:HH11	1.78	0.49
1:A:71:ILE:O	1:A:75:VAL:HG22	2.12	0.48
1:A:298:THR:HA	1:A:299:PRO:HD3	1.72	0.48
1:A:529:ILE:HG23	1:A:533:PHE:CE2	2.49	0.48
1:A:397:ILE:HG23	1:A:406:TRP:HB2	1.95	0.47
1:A:588:GLN:HA	1:A:591:THR:HG23	1.94	0.47
1:A:105:LEU:HB2	1:A:593:LEU:HB3	1.96	0.47

Continued on next page...

Continued from previous page...

Atom-1	Atom-2	Interatomic distance (Å)	Clash overlap (Å)
1:A:276:LEU:HD22	1:A:362:VAL:HG21	1.97	0.47
4:A:701:CLR:H211	4:A:701:CLR:H232	1.74	0.47
3:H:192:SER:O	3:H:196:SER:OG	2.32	0.46
2:L:168:ASP:OD2	2:L:170:LYS:HG2	2.15	0.46
1:A:480:GLY:O	1:A:483:ILE:HG22	2.14	0.46
1:A:84:GLU:HB3	1:A:328:LEU:HB2	1.97	0.46
1:A:292:GLY:HA3	1:A:364:PHE:O	2.16	0.46
1:A:294:GLN:O	1:A:298:THR:OG1	2.26	0.45
1:A:247:TYR:CZ	1:A:455:TYR:HB3	2.52	0.45
3:H:125:PRO:HB3	3:H:151:TYR:HB3	1.98	0.45
3:H:101:VAL:HB	3:H:104:ARG:HB2	1.99	0.45
1:A:293:ILE:HD12	1:A:361:PHE:CD1	2.52	0.45
1:A:351:ILE:HD13	4:A:701:CLR:H151	2.00	0.45
1:A:115:LEU:HD23	1:A:567:SER:HA	1.99	0.44
3:H:91:THR:HG23	3:H:116:THR:HA	1.98	0.44
1:A:314:ALA:HB1	1:A:534:ILE:HD13	1.99	0.44
1:A:94:GLY:N	1:A:435:ASP:OD2	2.49	0.44
2:L:120:PRO:HD3	3:H:133:VAL:HG12	2.00	0.44
1:A:263:LYS:HD3	1:A:263:LYS:HA	1.85	0.44
2:L:8:PRO:HG2	2:L:11:MET:HB2	2.00	0.43
3:H:36:TRP:HD1	3:H:70:ILE:HD12	1.82	0.43
3:H:33:ALA:N	3:H:100:GLU:OE1	2.51	0.43
1:A:472:HIS:CD2	1:A:547:TYR:HB2	2.53	0.43
2:L:193:TYR:HB2	2:L:210:PHE:CE1	2.54	0.43
1:A:53:PHE:HB2	1:A:316:GLN:HE21	1.83	0.43
1:A:93:LYS:HB3	1:A:97:THR:HB	2.00	0.43
3:H:154:GLU:HG2	3:H:155:PRO:HA	2.01	0.43
2:L:19:VAL:HG13	2:L:79:VAL:HG21	2.01	0.42
1:A:101:ARG:HB3	1:A:597:TRP:HB2	2.01	0.42
3:H:22:CYS:HB3	3:H:79:LEU:HB3	2.02	0.42
1:A:590:PHE:O	1:A:594:THR:N	2.52	0.42
3:H:83:MET:HB3	3:H:86:LEU:HD21	2.01	0.42
4:A:701:CLR:H231	4:A:701:CLR:H273	1.88	0.42
1:A:532:LEU:O	1:A:535:THR:HG22	2.20	0.42
1:A:381:VAL:O	1:A:392:VAL:HG11	2.19	0.42
2:L:156:ARG:HH11	2:L:180:LEU:HD11	1.85	0.42
1:A:342:TYR:CZ	1:A:346:LEU:HD11	2.55	0.41
3:H:146:CYS:HB2	3:H:160:TRP:CH2	2.56	0.41
1:A:43:PHE:CG	1:A:327:VAL:HG11	2.56	0.41
1:A:33:LYS:HZ3	1:A:339:ASN:CG	2.23	0.41
1:A:434:SER:HA	1:A:440:ILE:HB	2.02	0.41

Continued on next page...

Continued from previous page...

Atom-1	Atom-2	Interatomic distance (Å)	Clash overlap (Å)
2:L:185:ASP:HB3	2:L:189:ARG:HH21	1.85	0.41
2:L:120:PRO:HB3	2:L:210:PHE:CE2	2.55	0.41
1:A:522:CYS:HA	1:A:526:VAL:HB	2.03	0.40
3:H:6:GLU:OE1	3:H:6:GLU:N	2.50	0.40
2:L:170:LYS:HG3	2:L:171:ASP:H	1.85	0.40
1:A:29:THR:OG1	1:A:30:TRP:N	2.54	0.40
3:H:30:SER:O	3:H:53:SER:HB2	2.21	0.40
2:L:168:ASP:OD1	2:L:171:ASP:N	2.51	0.40

There are no symmetry-related clashes.

5.3 Torsion angles [i](#)

5.3.1 Protein backbone [i](#)

In the following table, the Percentiles column shows the percent Ramachandran outliers of the chain as a percentile score with respect to all X-ray entries followed by that with respect to entries of similar resolution.

The Analysed column shows the number of residues for which the backbone conformation was analysed, and the total number of residues.

Mol	Chain	Analysed	Favoured	Allowed	Outliers	Percentiles	
1	A	533/545 (98%)	513 (96%)	20 (4%)	0	100	100
2	L	212/237 (90%)	205 (97%)	7 (3%)	0	100	100
3	H	217/240 (90%)	213 (98%)	4 (2%)	0	100	100
All	All	962/1022 (94%)	931 (97%)	31 (3%)	0	100	100

There are no Ramachandran outliers to report.

5.3.2 Protein sidechains [i](#)

In the following table, the Percentiles column shows the percent sidechain outliers of the chain as a percentile score with respect to all X-ray entries followed by that with respect to entries of similar resolution.

The Analysed column shows the number of residues for which the sidechain conformation was analysed, and the total number of residues.

Mol	Chain	Analysed	Rotameric	Outliers	Percentiles	
1	A	435/450 (97%)	428 (98%)	7 (2%)	68	89
2	L	184/207 (89%)	180 (98%)	4 (2%)	57	85
3	H	175/205 (85%)	174 (99%)	1 (1%)	89	96
All	All	794/862 (92%)	782 (98%)	12 (2%)	70	90

All (12) residues with a non-rotameric sidechain are listed below:

Mol	Chain	Res	Type
1	A	51	TRP
1	A	84	GLU
1	A	123	TYR
1	A	308	GLU
1	A	420	ASP
1	A	530	PHE
1	A	590	PHE
2	L	34	LEU
2	L	151	ILE
2	L	168	ASP
2	L	200	LYS
3	H	165	LEU

Some sidechains can be flipped to improve hydrogen bonding and reduce clashes. There are no such sidechains identified.

5.3.3 RNA [i](#)

There are no RNA molecules in this entry.

5.4 Non-standard residues in protein, DNA, RNA chains [i](#)

There are no non-standard protein/DNA/RNA residues in this entry.

5.5 Carbohydrates [i](#)

There are no carbohydrates in this entry.

5.6 Ligand geometry [i](#)

Of 7 ligands modelled in this entry, 3 are monoatomic - leaving 4 for Mogul analysis.

In the following table, the Counts columns list the number of bonds (or angles) for which Mogul statistics could be retrieved, the number of bonds (or angles) that are observed in the model and the number of bonds (or angles) that are defined in the chemical component dictionary. The Link column lists molecule types, if any, to which the group is linked. The Z score for a bond length (or angle) is the number of standard deviations the observed value is removed from the expected value. A bond length (or angle) with $|Z| > 2$ is considered an outlier worth inspection. RMSZ is the root-mean-square of all Z scores of the bond lengths (or angles).

Mol	Type	Chain	Res	Link	Bond lengths			Bond angles		
					Counts	RMSZ	$\# Z > 2$	Counts	RMSZ	$\# Z > 2$
4	CLR	A	701	-	31,31,31	0.63	0	48,48,48	1.19	5 (10%)
4	CLR	A	702	-	31,31,31	0.64	0	48,48,48	1.05	2 (4%)
5	42J	A	703	-	11,11,11	1.15	2 (18%)	14,14,14	0.64	0
8	N9S	A	707	-	24,24,24	0.42	0	35,35,35	0.80	1 (2%)

In the following table, the Chirals column lists the number of chiral outliers, the number of chiral centers analysed, the number of these observed in the model and the number defined in the chemical component dictionary. Similar counts are reported in the Torsion and Rings columns. '-' means no outliers of that kind were identified.

Mol	Type	Chain	Res	Link	Chirals	Torsions	Rings
4	CLR	A	701	-	-	0/10/68/68	0/4/4/4
4	CLR	A	702	-	-	0/10/68/68	0/4/4/4
5	42J	A	703	-	-	0/3/3/3	0/1/1/1
8	N9S	A	707	-	-	0/8/48/48	0/2/2/2

All (2) bond length outliers are listed below:

Mol	Chain	Res	Type	Atoms	Z	Observed(Å)	Ideal(Å)
5	A	703	42J	C6-CL1	2.58	1.79	1.73
5	A	703	42J	C5-CL	2.71	1.80	1.73

All (8) bond angle outliers are listed below:

Mol	Chain	Res	Type	Atoms	Z	Observed(°)	Ideal(°)
4	A	702	CLR	C13-C17-C20	-2.55	115.37	119.47
4	A	701	CLR	C7-C6-C5	-2.27	120.65	125.06
4	A	701	CLR	C14-C8-C9	-2.21	106.09	109.09
4	A	701	CLR	C10-C5-C6	-2.09	119.55	122.92
8	A	707	N9S	O5-C5-C6	2.13	111.52	106.41
4	A	701	CLR	C7-C8-C9	2.87	113.33	109.72
4	A	701	CLR	C4-C5-C10	3.12	120.70	116.41
4	A	702	CLR	C4-C5-C10	3.44	121.14	116.41

There are no chirality outliers.

There are no torsion outliers.

There are no ring outliers.

1 monomer is involved in 3 short contacts:

Mol	Chain	Res	Type	Clashes	Symm-Clashes
4	A	701	CLR	3	0

5.7 Other polymers [i](#)

There are no such residues in this entry.

5.8 Polymer linkage issues [i](#)

There are no chain breaks in this entry.

6 Fit of model and data

6.1 Protein, DNA and RNA chains

In the following table, the column labelled ‘#RSRZ> 2’ contains the number (and percentage) of RSRZ outliers, followed by percent RSRZ outliers for the chain as percentile scores relative to all X-ray entries and entries of similar resolution. The OWAB column contains the minimum, median, 95th percentile and maximum values of the occupancy-weighted average B-factor per residue. The column labelled ‘Q< 0.9’ lists the number of (and percentage) of residues with an average occupancy less than 0.9.

Mol	Chain	Analysed	<RSRZ>	#RSRZ>2	OWAB(Å ²)	Q<0.9
1	A	534/545 (97%)	0.62	49 (9%) 10 5	60, 79, 109, 136	0
2	L	214/237 (90%)	0.51	20 (9%) 9 5	54, 73, 100, 120	0
3	H	219/240 (91%)	0.41	16 (7%) 16 9	58, 74, 109, 146	0
All	All	967/1022 (94%)	0.55	85 (8%) 11 6	54, 77, 107, 146	0

All (85) RSRZ outliers are listed below:

Mol	Chain	Res	Type	RSRZ
1	A	583	PRO	5.5
1	A	582	THR	5.1
3	H	133	VAL	5.1
1	A	537	TYR	4.8
1	A	290	PHE	4.8
2	L	119	PHE	4.5
2	L	149	TRP	4.3
2	L	133	VAL	4.1
1	A	578	LYS	4.1
1	A	255	TRP	3.8
1	A	441	LYS	3.7
2	L	118	ILE	3.6
1	A	481	TYR	3.6
2	L	154	SER	3.5
1	A	105	LEU	3.5
2	L	134	VAL	3.5
2	L	189	ARG	3.5
3	H	142	VAL	3.4
2	L	153	GLY	3.3
3	H	162	SER	3.3
1	A	588	GLN	3.3
1	A	304	ILE	3.3
1	A	287	PRO	3.2

Continued on next page...

Continued from previous page...

Mol	Chain	Res	Type	RSRZ
1	A	104	PRO	3.2
3	H	144	LEU	3.2
1	A	581	SER	3.1
1	A	438	PRO	3.1
1	A	540	ILE	3.0
2	L	194	THR	3.0
1	A	440	ILE	3.0
2	L	120	PRO	2.9
1	A	592	ILE	2.9
1	A	343	LYS	2.9
3	H	197	GLN	2.8
1	A	252	PHE	2.8
1	A	589	ARG	2.8
2	L	126	LEU	2.8
1	A	288	GLY	2.7
2	L	121	PRO	2.7
2	L	180	LEU	2.7
3	H	199	ILE	2.7
1	A	303	ALA	2.6
3	H	130	LEU	2.6
3	H	219	ARG	2.6
3	H	218	PRO	2.5
1	A	300	ASN	2.5
1	A	587	ARG	2.5
1	A	327	VAL	2.5
1	A	421	SER	2.4
1	A	437	PHE	2.4
1	A	285	THR	2.4
1	A	44	ALA	2.4
1	A	374	LEU	2.4
1	A	442	ARG	2.4
3	H	48	VAL	2.4
1	A	580	LEU	2.3
3	H	1	GLU	2.3
2	L	93	SER	2.3
1	A	43	PHE	2.3
1	A	260	THR	2.3
1	A	593	LEU	2.3
1	A	591	THR	2.2
1	A	422	SER	2.2
3	H	70	ILE	2.2
2	L	136	PHE	2.2

Continued on next page...

Continued from previous page...

Mol	Chain	Res	Type	RSRZ
1	A	232	LEU	2.2
2	L	123	SER	2.2
1	A	326	GLY	2.2
3	H	194	TRP	2.2
1	A	513	PHE	2.2
1	A	373	THR	2.1
2	L	76	ILE	2.1
3	H	191	SER	2.1
1	A	478	ALA	2.1
1	A	322	GLY	2.1
2	L	116	VAL	2.1
1	A	291	LEU	2.1
1	A	533	PHE	2.1
3	H	36	TRP	2.1
2	L	196	GLU	2.0
3	H	132	PRO	2.0
1	A	213	SER	2.0
1	A	342	TYR	2.0
1	A	470	PHE	2.0
2	L	151	ILE	2.0

6.2 Non-standard residues in protein, DNA, RNA chains [i](#)

There are no non-standard protein/DNA/RNA residues in this entry.

6.3 Carbohydrates [i](#)

There are no carbohydrates in this entry.

6.4 Ligands [i](#)

In the following table, the Atoms column lists the number of modelled atoms in the group and the number defined in the chemical component dictionary. LLDF column lists the quality of electron density of the group with respect to its neighbouring residues in protein, DNA or RNA chains. The B-factors column lists the minimum, median, 95th percentile and maximum values of B factors of atoms in the group. The column labelled 'Q < 0.9' lists the number of atoms with occupancy less than 0.9.

Mol	Type	Chain	Res	Atoms	RSCC	RSR	LLDF	B-factors(Å ²)	Q<0.9
4	CLR	A	701	28/28	0.91	0.59	6.69	65,88,99,102	0

Continued on next page...

Continued from previous page...

Mol	Type	Chain	Res	Atoms	RSCC	RSR	LLDF	B-factors(\AA^2)	Q<0.9
4	CLR	A	702	28/28	0.86	0.36	2.01	79,93,102,104	0
8	N9S	A	707	23/23	0.90	0.17	-0.91	69,88,95,102	0
5	42J	A	703	11/11	0.91	0.22	-1.20	65,75,87,90	0
7	NA	A	706	1/1	0.63	0.21	-2.08	86,86,86,86	0
6	CL	A	704	1/1	0.95	0.15	-2.59	71,71,71,71	0
7	NA	A	705	1/1	0.75	0.12	-3.03	73,73,73,73	0

6.5 Other polymers [i](#)

There are no such residues in this entry.