



# Full wwPDB X-ray Structure Validation Report ⓘ

Sep 18, 2017 – 04:59 PM EDT

PDB ID : 4Y15  
Title : SdiA in complex with 3-oxo-C6-homoserine lactone  
Authors : Nguyen, N.X.; Nguyen, Y.; Sperandio, V.; Jiang, Y.  
Deposited on : unknown  
Resolution : 2.83 Å(reported)

This is a Full wwPDB X-ray Structure Validation Report for a publicly released PDB entry.

We welcome your comments at [validation@mail.wwpdb.org](mailto:validation@mail.wwpdb.org)

A user guide is available at

<http://wwpdb.org/validation/2016/XrayValidationReportHelp>

with specific help available everywhere you see the ⓘ symbol.

---

The following versions of software and data (see [references ⓘ](#)) were used in the production of this report:

MolProbity : 4.02b-467  
Mogul : 1.7.2 (RC1), CSD as538be (2017)  
Xtriage (Phenix) : 1.9-1692  
EDS : rb-20029824  
Percentile statistics : 20161228.v01 (using entries in the PDB archive December 28th 2016)  
Refmac : 5.8.0135  
CCP4 : 6.5.0  
Ideal geometry (proteins) : Engh & Huber (2001)  
Ideal geometry (DNA, RNA) : Parkinson et al. (1996)  
Validation Pipeline (wwPDB-VP) : rb-20029824

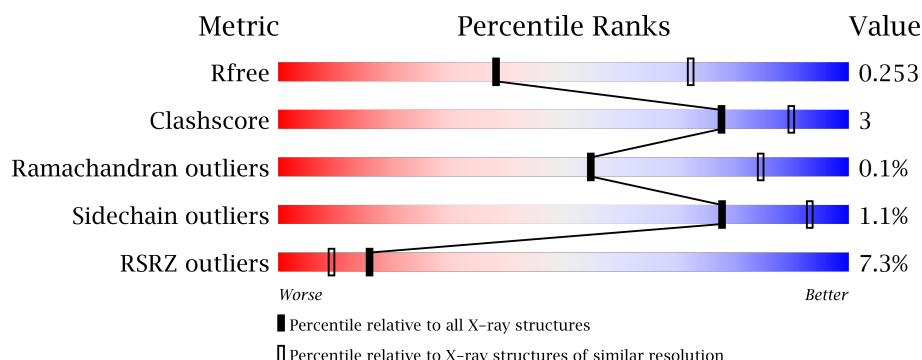
# 1 Overall quality at a glance

The following experimental techniques were used to determine the structure:

## *X-RAY DIFFRACTION*

The reported resolution of this entry is 2.83 Å.

Percentile scores (ranging between 0-100) for global validation metrics of the entry are shown in the following graphic. The table shows the number of entries on which the scores are based.



Metric	Whole archive (#Entries)	Similar resolution (#Entries, resolution range(Å))
$R_{free}$	100719	3466 (2.88-2.80)
Clashscore	112137	3975 (2.88-2.80)
Ramachandran outliers	110173	3902 (2.88-2.80)
Sidechain outliers	110143	3905 (2.88-2.80)
RSRZ outliers	101464	3501 (2.88-2.80)

The table below summarises the geometric issues observed across the polymeric chains and their fit to the electron density. The red, orange, yellow and green segments on the lower bar indicate the fraction of residues that contain outliers for  $\geq 3$ , 2, 1 and 0 types of geometric quality criteria. A grey segment represents the fraction of residues that are not modelled. The numeric value for each fraction is indicated below the corresponding segment, with a dot representing fractions  $\leq 5\%$ . The upper red bar (where present) indicates the fraction of residues that have poor fit to the electron density. The numeric value is given above the bar.

Mol	Chain	Length	Quality of chain
1	A	246	<div> <div>0.1%</div> <div> <div></div> <div>87%</div> <div>9%</div> <div>4%</div> </div> </div>
1	B	246	<div> <div>0.1%</div> <div> <div></div> <div>91%</div> <div>8%</div> <div>1%</div> </div> </div>
1	C	246	<div> <div>19%</div> <div> <div></div> <div>82%</div> <div>15%</div> <div>4%</div> </div> </div>

## 2 Entry composition

There are 4 unique types of molecules in this entry. The entry contains 11590 atoms, of which 5684 are hydrogens and 0 are deuteriums.

In the tables below, the ZeroOcc column contains the number of atoms modelled with zero occupancy, the AltConf column contains the number of residues with at least one atom in alternate conformation and the Trace column contains the number of residues modelled with at most 2 atoms.

- Molecule 1 is a protein called Transcriptional regulator of ftsQAZ gene cluster.

Mol	Chain	Residues	Atoms						ZeroOcc	AltConf	Trace
1	A	238	Total	C	H	N	O	S	0	0	0
			3850	1244	1902	339	351	14			
1	B	237	Total	C	H	N	O	S	0	0	0
			3836	1240	1896	336	350	14			
1	C	240	Total	C	H	N	O	S	0	0	0
			3842	1245	1886	340	357	14			

There are 18 discrepancies between the modelled and reference sequences:

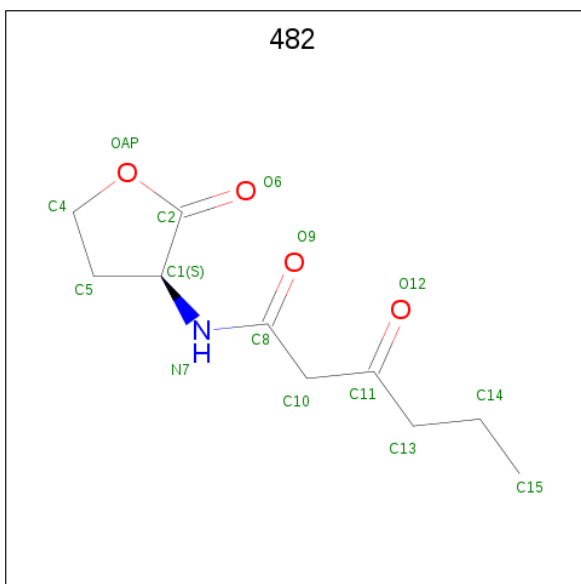
Chain	Residue	Modelled	Actual	Comment	Reference
A	241	HIS	-	expression tag	UNP Q8XBD0
A	242	HIS	-	expression tag	UNP Q8XBD0
A	243	HIS	-	expression tag	UNP Q8XBD0
A	244	HIS	-	expression tag	UNP Q8XBD0
A	245	HIS	-	expression tag	UNP Q8XBD0
A	246	HIS	-	expression tag	UNP Q8XBD0
B	241	HIS	-	expression tag	UNP Q8XBD0
B	242	HIS	-	expression tag	UNP Q8XBD0
B	243	HIS	-	expression tag	UNP Q8XBD0
B	244	HIS	-	expression tag	UNP Q8XBD0
B	245	HIS	-	expression tag	UNP Q8XBD0
B	246	HIS	-	expression tag	UNP Q8XBD0
C	241	HIS	-	expression tag	UNP Q8XBD0
C	242	HIS	-	expression tag	UNP Q8XBD0
C	243	HIS	-	expression tag	UNP Q8XBD0
C	244	HIS	-	expression tag	UNP Q8XBD0
C	245	HIS	-	expression tag	UNP Q8XBD0
C	246	HIS	-	expression tag	UNP Q8XBD0

- Molecule 2 is SULFATE ION (three-letter code: SO4) (formula: O<sub>4</sub>S).



Mol	Chain	Residues	Atoms			ZeroOcc	AltConf
2	A	1	Total	O	S	0	0
			5	4	1		
2	B	1	Total	O	S	0	0
			5	4	1		

- Molecule 3 is 3-oxo-N-[(3S)-2-oxotetrahydrofuran-3-yl]hexanamide (three-letter code: 482) (formula: C<sub>10</sub>H<sub>15</sub>NO<sub>4</sub>).



Mol	Chain	Residues	Atoms				ZeroOcc	AltConf
3	A	1	Total	C	N	O	0	0
			15	10	1	4		

*Continued on next page...*

*Continued from previous page...*

Mol	Chain	Residues	Atoms				ZeroOcc	AltConf
3	B	1	Total	C	N	O	0	0
			15	10	1	4		
3	C	1	Total	C	N	O	0	0
			15	10	1	4		

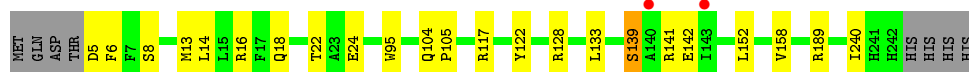
- Molecule 4 is water.

Mol	Chain	Residues	Atoms		ZeroOcc	AltConf
4	A	1	Total	O	0	0
			1	1		
4	B	3	Total	O	0	0
			3	3		
4	C	3	Total	O	0	0
			3	3		

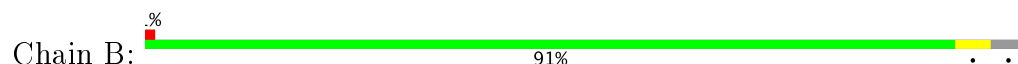
### 3 Residue-property plots [i](#)

These plots are drawn for all protein, RNA and DNA chains in the entry. The first graphic for a chain summarises the proportions of the various outlier classes displayed in the second graphic. The second graphic shows the sequence view annotated by issues in geometry and electron density. Residues are color-coded according to the number of geometric quality criteria for which they contain at least one outlier: green = 0, yellow = 1, orange = 2 and red = 3 or more. A red dot above a residue indicates a poor fit to the electron density ( $RSRZ > 2$ ). Stretches of 2 or more consecutive residues without any outlier are shown as a green connector. Residues present in the sample, but not in the model, are shown in grey.

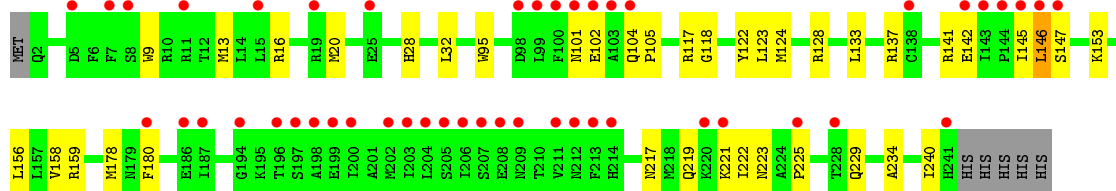
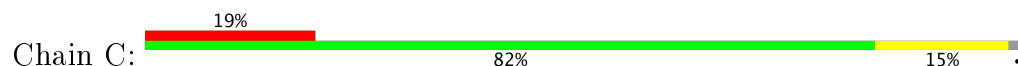
- Molecule 1: Transcriptional regulator of ftsQAZ gene cluster



- Molecule 1: Transcriptional regulator of ftsQAZ gene cluster



- Molecule 1: Transcriptional regulator of ftsQAZ gene cluster



## 4 Data and refinement statistics

Property	Value	Source
Space group	P 21 21 2	Depositor
Cell constants a, b, c, $\alpha$ , $\beta$ , $\gamma$	88.62Å 92.69Å 119.70Å 90.00° 90.00° 90.00°	Depositor
Resolution (Å)	41.55 – 2.83 41.55 – 2.84	Depositor EDS
% Data completeness (in resolution range)	98.6 (41.55-2.83) 98.6 (41.55-2.84)	Depositor EDS
$R_{merge}$	(Not available)	Depositor
$R_{sym}$	0.10	Depositor
$\langle I/\sigma(I) \rangle$ <sup>1</sup>	2.83 (at 2.86Å)	Xtriage
Refinement program	PHENIX (phenix.refine: 1.8.4_1496)	Depositor
R, $R_{free}$	0.229 , 0.253 0.230 , 0.253	Depositor DCC
$R_{free}$ test set	1187 reflections (5.01%)	DCC
Wilson B-factor (Å <sup>2</sup> )	66.0	Xtriage
Anisotropy	0.341	Xtriage
Bulk solvent $k_{sol}$ (e/Å <sup>3</sup> ), $B_{sol}$ (Å <sup>2</sup> )	0.41 , 60.1	EDS
L-test for twinning <sup>2</sup>	$\langle  L  \rangle = 0.49$ , $\langle L^2 \rangle = 0.32$	Xtriage
Estimated twinning fraction	0.023 for k,h,-l	Xtriage
$F_o, F_c$ correlation	0.92	EDS
Total number of atoms	11590	wwPDB-VP
Average B, all atoms (Å <sup>2</sup> )	83.0	wwPDB-VP

Xtriage's analysis on translational NCS is as follows: *The largest off-origin peak in the Patterson function is 3.66% of the height of the origin peak. No significant pseudotranslation is detected.*

<sup>1</sup>Intensities estimated from amplitudes.

<sup>2</sup>Theoretical values of  $\langle |L| \rangle$ ,  $\langle L^2 \rangle$  for acentric reflections are 0.5, 0.333 respectively for untwinned datasets, and 0.375, 0.2 for perfectly twinned datasets.

## 5 Model quality

### 5.1 Standard geometry

Bond lengths and bond angles in the following residue types are not validated in this section: SO4, 482

The Z score for a bond length (or angle) is the number of standard deviations the observed value is removed from the expected value. A bond length (or angle) with  $|Z| > 5$  is considered an outlier worth inspection. RMSZ is the root-mean-square of all Z scores of the bond lengths (or angles).

Mol	Chain	Bond lengths		Bond angles	
		RMSZ	# Z  >5	RMSZ	# Z  >5
1	A	0.26	0/1996	0.48	0/2703
1	B	0.25	0/1988	0.45	0/2693
1	C	0.27	0/2003	0.51	0/2713
All	All	0.26	0/5987	0.48	0/8109

Chiral center outliers are detected by calculating the chiral volume of a chiral center and verifying if the center is modelled as a planar moiety or with the opposite hand. A planarity outlier is detected by checking planarity of atoms in a peptide group, atoms in a mainchain group or atoms of a sidechain that are expected to be planar.

Mol	Chain	#Chirality outliers	#Planarity outliers
1	A	0	1
1	B	0	3
1	C	0	2
All	All	0	6

There are no bond length outliers.

There are no bond angle outliers.

There are no chirality outliers.

All (6) planarity outliers are listed below:

Mol	Chain	Res	Type	Group
1	A	139	SER	Peptide
1	B	141	ARG	Peptide
1	B	142	GLU	Peptide
1	B	143	ILE	Peptide
1	C	145	ILE	Peptide
1	C	146	LEU	Peptide



## 5.2 Too-close contacts ⓘ

In the following table, the Non-H and H(model) columns list the number of non-hydrogen atoms and hydrogen atoms in the chain respectively. The H(added) column lists the number of hydrogen atoms added and optimized by MolProbity. The Clashes column lists the number of clashes within the asymmetric unit, whereas Symm-Clashes lists symmetry related clashes.

Mol	Chain	Non-H	H(model)	H(added)	Clashes	Symm-Clashes
1	A	1948	1902	1902	13	0
1	B	1940	1896	1901	4	0
1	C	1956	1886	1896	21	0
2	A	5	0	0	1	0
2	B	5	0	0	0	0
3	A	15	0	15	1	0
3	B	15	0	15	3	0
3	C	15	0	15	1	0
4	A	1	0	0	0	0
4	B	3	0	0	0	0
4	C	3	0	0	0	0
All	All	5906	5684	5744	39	0

The all-atom clashscore is defined as the number of clashes found per 1000 atoms (including hydrogen atoms). The all-atom clashscore for this structure is 3.

All (39) close contacts within the same asymmetric unit are listed below, sorted by their clash magnitude.

Atom-1	Atom-2	Interatomic distance (Å)	Clash overlap (Å)
3:B:302:482:H8	3:B:302:482:O6	1.87	0.73
1:A:5:ASP:O	1:A:8:SER:OG	2.19	0.59
1:C:180:PHE:CD1	1:C:221:LYS:HD2	2.41	0.55
1:C:178:MET:HG2	1:C:222:ILE:HD11	1.88	0.55
1:A:141:ARG:O	1:A:142:GLU:C	2.44	0.55
1:A:95:TRP:CH2	3:A:302:482:H13	2.42	0.54
3:B:302:482:C2	3:B:302:482:H8	2.40	0.52
1:C:9:TRP:O	1:C:13:MET:HG2	2.09	0.52
1:A:22:THR:HG21	1:A:24:GLU:HG2	1.91	0.52
1:B:178:MET:HG2	1:B:222:ILE:HD11	1.94	0.49
1:A:128:ARG:HD2	1:C:124:MET:HE1	1.94	0.49
1:C:124:MET:HE2	1:C:128:ARG:HA	1.95	0.49
1:C:133:LEU:HB3	1:C:158:VAL:HG22	1.94	0.49
1:C:146:LEU:CB	1:C:147:SER:HA	2.42	0.49
1:A:117:ARG:NH2	2:A:301:SO4:O2	2.46	0.49
1:C:234:ALA:HB1	1:C:240:ILE:HG12	1.94	0.48

*Continued on next page...*

*Continued from previous page...*

Atom-1	Atom-2	Interatomic distance (Å)	Clash overlap (Å)
1:A:22:THR:CG2	1:A:24:GLU:HG2	2.43	0.48
1:C:101:ASN:OD1	1:C:102:GLU:N	2.47	0.47
1:A:189:ARG:CG	1:A:240:ILE:HG23	2.46	0.46
1:A:133:LEU:HB3	1:A:158:VAL:HG22	1.99	0.45
1:C:9:TRP:CZ3	1:C:153:LYS:HD3	2.52	0.44
1:A:104:GLN:N	1:A:105:PRO:CD	2.81	0.44
1:C:95:TRP:CH2	3:C:301:482:H11	2.52	0.44
1:C:137:ARG:HH12	1:C:142:GLU:CB	2.31	0.44
1:B:182:LYS:HD2	1:B:185:LYS:HE3	2.00	0.43
1:C:104:GLN:N	1:C:105:PRO:CD	2.82	0.43
1:C:219:GLN:O	1:C:223:ASN:N	2.49	0.43
1:C:225:PRO:HD2	1:C:229:GLN:OE1	2.18	0.43
1:C:9:TRP:CZ3	1:C:156:LEU:HD23	2.54	0.42
1:C:117:ARG:HG3	1:C:141:ARG:H	1.84	0.42
1:C:95:TRP:CE3	1:C:118:GLY:HA3	2.54	0.42
1:B:5:ASP:O	1:B:8:SER:OG	2.33	0.42
1:A:14:LEU:O	1:A:18:GLN:HG2	2.21	0.41
1:A:13:MET:CE	1:A:16:ARG:HE	2.33	0.41
1:C:123:LEU:HD21	1:C:159:ARG:HA	2.03	0.41
1:C:16:ARG:O	1:C:20:MET:HG3	2.21	0.40
1:A:6:PHE:CD2	1:A:6:PHE:C	2.94	0.40
1:B:80:ASP:OD2	3:B:302:482:H9	2.22	0.40
1:C:28:HIS:O	1:C:32:LEU:CD1	2.70	0.40

There are no symmetry-related clashes.

## 5.3 Torsion angles ⓘ

### 5.3.1 Protein backbone ⓘ

In the following table, the Percentiles column shows the percent Ramachandran outliers of the chain as a percentile score with respect to all X-ray entries followed by that with respect to entries of similar resolution.

The Analysed column shows the number of residues for which the backbone conformation was analysed, and the total number of residues.

Mol	Chain	Analysed	Favoured	Allowed	Outliers	Percentiles	
1	A	236/246 (96%)	232 (98%)	4 (2%)	0	100	100
1	B	235/246 (96%)	228 (97%)	6 (3%)	1 (0%)	38	69

*Continued on next page...*

*Continued from previous page...*

Mol	Chain	Analysed	Favoured	Allowed	Outliers	Percentiles	
1	C	238/246 (97%)	231 (97%)	7 (3%)	0	100	100
All	All	709/738 (96%)	691 (98%)	17 (2%)	1 (0%)	55	84

All (1) Ramachandran outliers are listed below:

Mol	Chain	Res	Type
1	B	142	GLU

### 5.3.2 Protein sidechains ⓘ

In the following table, the Percentiles column shows the percent sidechain outliers of the chain as a percentile score with respect to all X-ray entries followed by that with respect to entries of similar resolution.

The Analysed column shows the number of residues for which the sidechain conformation was analysed, and the total number of residues.

Mol	Chain	Analysed	Rotameric	Outliers	Percentiles	
1	A	207/219 (94%)	204 (99%)	3 (1%)	71	91
1	B	207/219 (94%)	205 (99%)	2 (1%)	80	94
1	C	207/219 (94%)	205 (99%)	2 (1%)	80	94
All	All	621/657 (94%)	614 (99%)	7 (1%)	78	93

All (7) residues with a non-rotameric sidechain are listed below:

Mol	Chain	Res	Type
1	A	122	TYR
1	A	139	SER
1	A	152	LEU
1	B	122	TYR
1	B	217	ASN
1	C	122	TYR
1	C	217	ASN

Some sidechains can be flipped to improve hydrogen bonding and reduce clashes. All (2) such sidechains are listed below:

Mol	Chain	Res	Type
1	B	214	HIS
1	C	241	HIS

### 5.3.3 RNA ⓘ

There are no RNA molecules in this entry.

## 5.4 Non-standard residues in protein, DNA, RNA chains ⓘ

There are no non-standard protein/DNA/RNA residues in this entry.

## 5.5 Carbohydrates ⓘ

There are no carbohydrates in this entry.

## 5.6 Ligand geometry ⓘ

5 ligands are modelled in this entry.

In the following table, the Counts columns list the number of bonds (or angles) for which Mogul statistics could be retrieved, the number of bonds (or angles) that are observed in the model and the number of bonds (or angles) that are defined in the chemical component dictionary. The Link column lists molecule types, if any, to which the group is linked. The Z score for a bond length (or angle) is the number of standard deviations the observed value is removed from the expected value. A bond length (or angle) with  $|Z| > 2$  is considered an outlier worth inspection. RMSZ is the root-mean-square of all Z scores of the bond lengths (or angles).

Mol	Type	Chain	Res	Link	Bond lengths			Bond angles		
					Counts	RMSZ	# $ Z  > 2$	Counts	RMSZ	# $ Z  > 2$
2	SO4	A	301	-	4,4,4	0.20	0	6,6,6	0.11	0
3	482	A	302	-	15,15,15	2.29	5 (33%)	14,19,19	1.99	4 (28%)
2	SO4	B	301	-	4,4,4	0.15	0	6,6,6	0.05	0
3	482	B	302	-	15,15,15	2.29	4 (26%)	14,19,19	3.06	6 (42%)
3	482	C	301	-	15,15,15	2.31	5 (33%)	14,19,19	1.73	3 (21%)

In the following table, the Chirals column lists the number of chiral outliers, the number of chiral centers analysed, the number of these observed in the model and the number defined in the chemical component dictionary. Similar counts are reported in the Torsion and Rings columns. '-' means no outliers of that kind were identified.

Mol	Type	Chain	Res	Link	Chirals	Torsions	Rings
2	SO4	A	301	-	-	0/0/0/0	0/0/0/0
3	482	A	302	-	-	0/11/21/21	0/1/1/1
2	SO4	B	301	-	-	0/0/0/0	0/0/0/0
3	482	B	302	-	-	0/11/21/21	0/1/1/1
3	482	C	301	-	-	0/11/21/21	0/1/1/1

All (14) bond length outliers are listed below:

Mol	Chain	Res	Type	Atoms	Z	Observed(Å)	Ideal(Å)
3	A	302	482	OAP-C4	-3.79	1.36	1.46
3	C	301	482	OAP-C4	-3.70	1.36	1.46
3	B	302	482	OAP-C4	-3.69	1.36	1.46
3	C	301	482	C1-N7	-2.77	1.39	1.45
3	A	302	482	C1-C2	-2.76	1.46	1.52
3	C	301	482	C1-C2	-2.72	1.46	1.52
3	A	302	482	C1-N7	-2.67	1.40	1.45
3	B	302	482	C1-C2	-2.37	1.47	1.52
3	A	302	482	C8-N7	3.99	1.42	1.34
3	C	301	482	C8-N7	4.03	1.42	1.34
3	B	302	482	C8-N7	4.44	1.43	1.34
3	A	302	482	OAP-C2	5.66	1.48	1.35
3	C	301	482	OAP-C2	5.77	1.48	1.35
3	B	302	482	OAP-C2	5.86	1.48	1.35

All (13) bond angle outliers are listed below:

Mol	Chain	Res	Type	Atoms	Z	Observed(°)	Ideal(°)
3	B	302	482	O9-C8-N7	-4.12	115.86	122.97
3	A	302	482	C4-OAP-C2	-3.53	107.07	110.42
3	B	302	482	C5-C1-N7	-2.95	108.79	115.23
3	C	301	482	C5-C1-N7	-2.51	109.75	115.23
3	A	302	482	C5-C1-N7	-2.42	109.94	115.23
3	C	301	482	C10-C8-N7	2.54	119.55	116.12
3	A	302	482	C10-C8-N7	2.85	119.97	116.12
3	B	302	482	OAP-C2-O6	3.18	124.85	121.43
3	C	301	482	OAP-C2-O6	4.16	125.90	121.43
3	A	302	482	OAP-C2-O6	4.33	126.09	121.43
3	B	302	482	C1-N7-C8	4.46	133.40	121.62
3	B	302	482	C2-C1-N7	4.55	119.84	112.36
3	B	302	482	C10-C8-N7	6.76	125.25	116.12

There are no chirality outliers.

There are no torsion outliers.

There are no ring outliers.

4 monomers are involved in 6 short contacts:

Mol	Chain	Res	Type	Clashes	Symm-Clashes
2	A	301	SO4	1	0
3	A	302	482	1	0

*Continued on next page...*

*Continued from previous page...*

Mol	Chain	Res	Type	Clashes	Symm-Clashes
3	B	302	482	3	0
3	C	301	482	1	0

## 5.7 Other polymers [i](#)

There are no such residues in this entry.

## 5.8 Polymer linkage issues [i](#)

There are no chain breaks in this entry.

## 6 Fit of model and data ⓘ

### 6.1 Protein, DNA and RNA chains ⓘ

In the following table, the column labelled ‘#RSRZ> 2’ contains the number (and percentage) of RSRZ outliers, followed by percent RSRZ outliers for the chain as percentile scores relative to all X-ray entries and entries of similar resolution. The OWAB column contains the minimum, median, 95<sup>th</sup> percentile and maximum values of the occupancy-weighted average B-factor per residue. The column labelled ‘Q< 0.9’ lists the number of (and percentage) of residues with an average occupancy less than 0.9.

Mol	Chain	Analysed	<RSRZ>	#RSRZ>2	OWAB(Å <sup>2</sup> )	Q<0.9
1	A	238/246 (96%)	0.38	2 (0%) 86 82	36, 64, 110, 177	0
1	B	237/246 (96%)	0.32	3 (1%) 77 72	39, 61, 101, 144	0
1	C	240/246 (97%)	1.10	47 (19%) 1 1	45, 92, 145, 246	0
All	All	715/738 (96%)	0.60	52 (7%) 16 9	36, 70, 135, 246	0

All (52) RSRZ outliers are listed below:

Mol	Chain	Res	Type	RSRZ
1	C	144	PRO	6.5
1	C	143	ILE	5.1
1	C	187	ILE	4.9
1	C	145	ILE	4.9
1	C	206	ILE	4.6
1	C	208	GLU	4.5
1	C	203	ILE	4.5
1	B	144	PRO	4.4
1	C	207	SER	4.4
1	C	142	GLU	4.3
1	C	205	SER	4.1
1	C	214	HIS	4.0
1	C	15	LEU	4.0
1	C	100	PHE	3.8
1	C	146	LEU	3.7
1	C	221	LYS	3.6
1	C	212	ASN	3.5
1	C	11	ARG	3.5
1	C	102	GLU	3.4
1	C	202	MET	3.4
1	C	241	HIS	3.4
1	C	198	ALA	3.3
1	C	209	ASN	3.2

*Continued on next page...*

*Continued from previous page...*

Mol	Chain	Res	Type	RSRZ
1	C	101	ASN	3.2
1	C	213	PHE	3.2
1	C	138	CYS	3.1
1	C	211	VAL	3.1
1	C	204	LEU	3.1
1	C	99	LEU	3.0
1	C	104	GLN	2.9
1	C	228	THR	2.9
1	C	200	ILE	2.9
1	C	180	PHE	2.8
1	C	194	GLY	2.7
1	C	225	PRO	2.7
1	B	103	ALA	2.7
1	C	199	GLU	2.7
1	C	147	SER	2.6
1	C	220	LYS	2.5
1	C	25	GLU	2.5
1	A	143	ILE	2.5
1	C	186	GLU	2.5
1	C	197	SER	2.4
1	C	7	PHE	2.4
1	C	5	ASP	2.3
1	A	140	ALA	2.3
1	C	103	ALA	2.3
1	C	19	ARG	2.3
1	C	98	ASP	2.1
1	B	241	HIS	2.0
1	C	196	THR	2.0
1	C	8	SER	2.0

## 6.2 Non-standard residues in protein, DNA, RNA chains ⓘ

There are no non-standard protein/DNA/RNA residues in this entry.

## 6.3 Carbohydrates ⓘ

There are no carbohydrates in this entry.



## 6.4 Ligands [i](#)

In the following table, the Atoms column lists the number of modelled atoms in the group and the number defined in the chemical component dictionary. LLDF column lists the quality of electron density of the group with respect to its neighbouring residues in protein, DNA or RNA chains. The B-factors column lists the minimum, median, 95<sup>th</sup> percentile and maximum values of B factors of atoms in the group. The column labelled 'Q< 0.9' lists the number of atoms with occupancy less than 0.9.

Mol	Type	Chain	Res	Atoms	RSCC	RSR	LLDF	B-factors(Å <sup>2</sup> )	Q<0.9
3	482	B	302	15/15	0.95	0.32	1.65	50,58,65,73	0
3	482	A	302	15/15	0.97	0.25	1.22	38,54,62,62	0
3	482	C	301	15/15	0.92	0.30	0.41	62,69,78,80	0
2	SO4	A	301	5/5	0.77	0.30	0.35	155,156,173,223	0
2	SO4	B	301	5/5	0.83	0.22	-	134,139,153,157	0

## 6.5 Other polymers [i](#)

There are no such residues in this entry.