



Full wwPDB X-ray Structure Validation Report ⓘ

Aug 22, 2017 – 04:59 PM EDT

PDB ID : 4Y9P
Title : PA3825-EAL Ca-CdG Structure
Authors : Bellini, D.; Horrell, S.; Wagner, A.; Strange, R.; Walsh, M.A.
Deposited on : unknown
Resolution : 2.44 Å(reported)

This is a Full wwPDB X-ray Structure Validation Report for a publicly released PDB entry.

We welcome your comments at validation@mail.wwpdb.org

A user guide is available at

<http://wwpdb.org/validation/2016/XrayValidationReportHelp>

with specific help available everywhere you see the ⓘ symbol.

The following versions of software and data (see [references ⓘ](#)) were used in the production of this report:

MolProbity : 4.02b-467
Mogul : 1.7.2 (RC1), CSD as538be (2017)
Xtriage (Phenix) : 1.9-1692
EDS : rb-20029824
Percentile statistics : 20161228.v01 (using entries in the PDB archive December 28th 2016)
Refmac : 5.8.0135
CCP4 : 6.5.0
Ideal geometry (proteins) : Engh & Huber (2001)
Ideal geometry (DNA, RNA) : Parkinson et al. (1996)
Validation Pipeline (wwPDB-VP) : rb-20029824

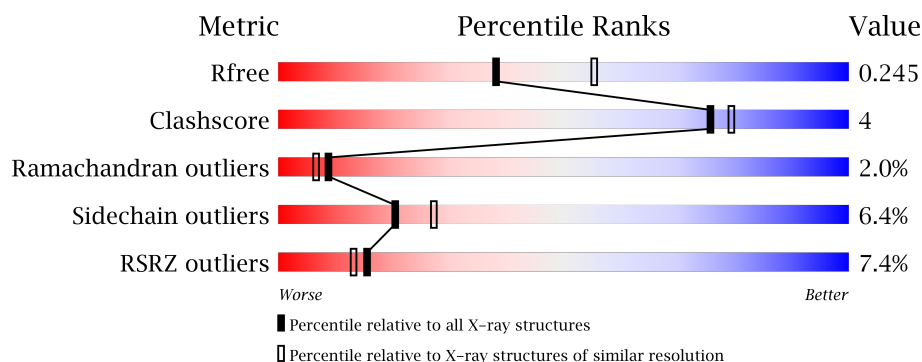
1 Overall quality at a glance

The following experimental techniques were used to determine the structure:

X-RAY DIFFRACTION

The reported resolution of this entry is 2.44 Å.

Percentile scores (ranging between 0-100) for global validation metrics of the entry are shown in the following graphic. The table shows the number of entries on which the scores are based.



Metric	Whole archive (#Entries)	Similar resolution (#Entries, resolution range(Å))
R_{free}	100719	1152 (2.46-2.42)
Clashscore	112137	1224 (2.46-2.42)
Ramachandran outliers	110173	1217 (2.46-2.42)
Sidechain outliers	110143	1217 (2.46-2.42)
RSRZ outliers	101464	1158 (2.46-2.42)

The table below summarises the geometric issues observed across the polymeric chains and their fit to the electron density. The red, orange, yellow and green segments on the lower bar indicate the fraction of residues that contain outliers for ≥ 3 , 2, 1 and 0 types of geometric quality criteria. A grey segment represents the fraction of residues that are not modelled. The numeric value for each fraction is indicated below the corresponding segment, with a dot representing fractions $\leq 5\%$. The upper red bar (where present) indicates the fraction of residues that have poor fit to the electron density. The numeric value is given above the bar.

Mol	Chain	Length	Quality of chain
1	A	263	<div> <div>7%</div> <div> <div></div> <div>82%</div> <div>11%</div> <div>• 5%</div> </div> </div>
1	B	263	<div> <div>7%</div> <div> <div></div> <div>81%</div> <div>12%</div> <div>• •</div> </div> </div>

The following table lists non-polymeric compounds, carbohydrate monomers and non-standard residues in protein, DNA, RNA chains that are outliers for geometric or electron-density-fit criteria:

Mol	Type	Chain	Res	Chirality	Geometry	Clashes	Electron density
2	CA	A	301	-	-	-	X

2 Entry composition [i](#)

There are 4 unique types of molecules in this entry. The entry contains 4110 atoms, of which 0 are hydrogens and 0 are deuteriums.

In the tables below, the ZeroOcc column contains the number of atoms modelled with zero occupancy, the AltConf column contains the number of residues with at least one atom in alternate conformation and the Trace column contains the number of residues modelled with at most 2 atoms.

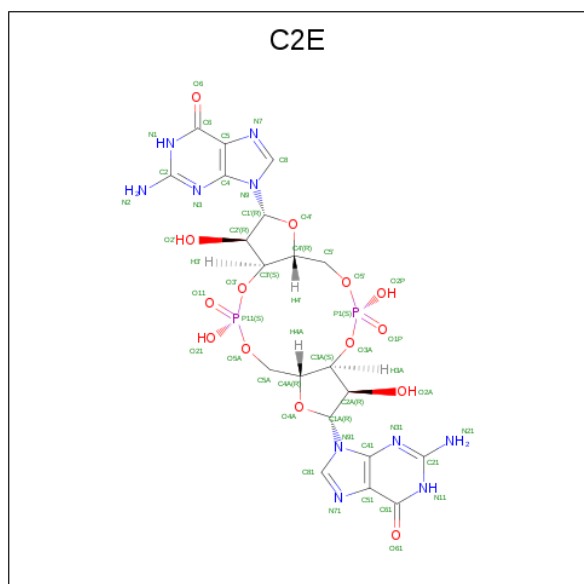
- Molecule 1 is a protein called PA3825-EAL.

Mol	Chain	Residues	Atoms					ZeroOcc	AltConf	Trace
1	A	251	Total	C	N	O	S	0	1	0
			1970	1252	343	368	7			
1	B	252	Total	C	N	O	S	0	2	0
			1986	1262	345	372	7			

- Molecule 2 is CALCIUM ION (three-letter code: CA) (formula: Ca).

Mol	Chain	Residues	Atoms		ZeroOcc	AltConf
2	B	3	Total	Ca	0	0
			3	3		
2	A	3	Total	Ca	0	0
			3	3		

- Molecule 3 is 9,9'-[(2R,3R,3aS,5S,7aR,9R,10R,10aS,12S,14aR)-3,5,10,12-tetrahydroxy-5,12-dioxidoctahydro-2H,7H-difuro[3,2-d:3',2'-j][1,3,7,9,2,8]tetraoxadiphosphacyclododecine-2,9-diyl]bis(2-amino-1,9-dihydro-6H-purin-6-one) (three-letter code: C2E) (formula: C₂₀H₂₄N₁₀O₁₄P₂).



Mol	Chain	Residues	Atoms					ZeroOcc	AltConf
3	A	1	Total 46	C 20	N 10	O 14	P 2	0	0
3	B	1	Total 46	C 20	N 10	O 14	P 2	0	0

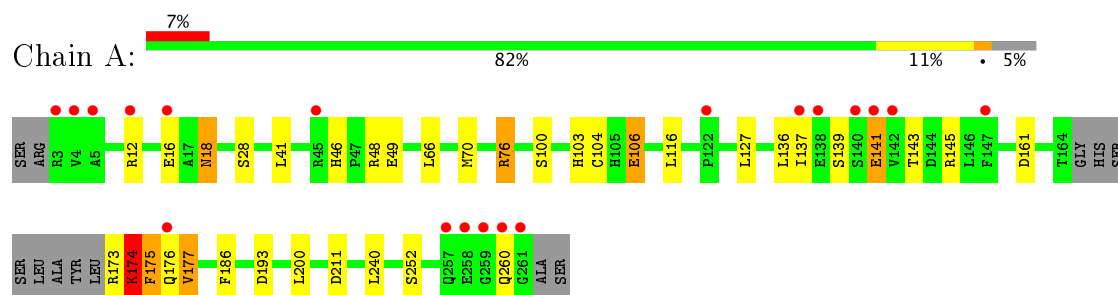
- Molecule 4 is water.

Mol	Chain	Residues	Atoms		ZeroOcc	AltConf
4	A	29	Total 29	O 29	0	0
4	B	27	Total 27	O 27	0	0

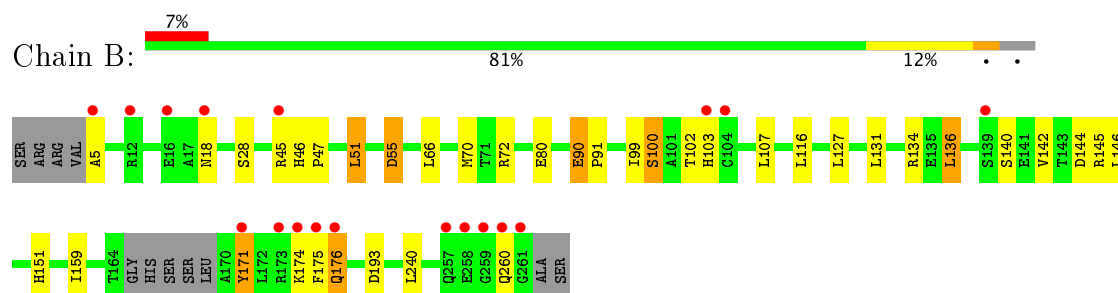
3 Residue-property plots [i](#)

These plots are drawn for all protein, RNA and DNA chains in the entry. The first graphic for a chain summarises the proportions of the various outlier classes displayed in the second graphic. The second graphic shows the sequence view annotated by issues in geometry and electron density. Residues are color-coded according to the number of geometric quality criteria for which they contain at least one outlier: green = 0, yellow = 1, orange = 2 and red = 3 or more. A red dot above a residue indicates a poor fit to the electron density ($RSRZ > 2$). Stretches of 2 or more consecutive residues without any outlier are shown as a green connector. Residues present in the sample, but not in the model, are shown in grey.

• Molecule 1: PA3825-EAL



• Molecule 1: PA3825-EAL



4 Data and refinement statistics

Property	Value	Source
Space group	C 1 2 1	Depositor
Cell constants a, b, c, α , β , γ	112.23 Å 59.40 Å 92.78 Å 90.00° 115.03° 90.00°	Depositor
Resolution (Å)	84.07 – 2.44 51.29 – 2.44	Depositor EDS
% Data completeness (in resolution range)	98.0 (84.07-2.44) 98.1 (51.29-2.44)	Depositor EDS
R_{merge}	0.06	Depositor
R_{sym}	(Not available)	Depositor
$\langle I/\sigma(I) \rangle$ ¹	2.44 (at 2.45 Å)	Xtriage
Refinement program	REFMAC 5.8.0103	Depositor
R, R_{free}	0.188 , 0.247 0.201 , 0.245	Depositor DCC
R_{free} test set	1060 reflections (5.48%)	DCC
Wilson B-factor (Å ²)	53.9	Xtriage
Anisotropy	0.121	Xtriage
Bulk solvent k_{sol} (e/Å ³), B_{sol} (Å ²)	0.30 , 49.3	EDS
L-test for twinning ²	$\langle L \rangle = 0.48$, $\langle L^2 \rangle = 0.32$	Xtriage
Estimated twinning fraction	No twinning to report.	Xtriage
F_o, F_c correlation	0.96	EDS
Total number of atoms	4110	wwPDB-VP
Average B, all atoms (Å ²)	72.0	wwPDB-VP

Xtriage's analysis on translational NCS is as follows: *The analyses of the Patterson function reveals a significant off-origin peak that is 29.29 % of the origin peak, indicating pseudo translational symmetry. The chance of finding a peak of this or larger height randomly in a structure without pseudo translational symmetry is equal to 1.5893e-03. The detected translational NCS is most likely also responsible for the elevated intensity ratio.*

¹ Intensities estimated from amplitudes.

² Theoretical values of $\langle |L| \rangle$, $\langle L^2 \rangle$ for acentric reflections are 0.5, 0.333 respectively for untwinned datasets, and 0.375, 0.2 for perfectly twinned datasets.

5 Model quality

5.1 Standard geometry

Bond lengths and bond angles in the following residue types are not validated in this section: CA, C2E

The Z score for a bond length (or angle) is the number of standard deviations the observed value is removed from the expected value. A bond length (or angle) with $|Z| > 5$ is considered an outlier worth inspection. RMSZ is the root-mean-square of all Z scores of the bond lengths (or angles).

Mol	Chain	Bond lengths		Bond angles	
		RMSZ	$\# Z > 5$	RMSZ	$\# Z > 5$
1	A	0.83	0/2009	1.04	8/2722 (0.3%)
1	B	0.84	0/2026	0.97	6/2745 (0.2%)
All	All	0.83	0/4035	1.01	14/5467 (0.3%)

Chiral center outliers are detected by calculating the chiral volume of a chiral center and verifying if the center is modelled as a planar moiety or with the opposite hand. A planarity outlier is detected by checking planarity of atoms in a peptide group, atoms in a mainchain group or atoms of a sidechain that are expected to be planar.

Mol	Chain	#Chirality outliers	#Planarity outliers
1	A	0	2
1	B	0	1
All	All	0	3

There are no bond length outliers.

All (14) bond angle outliers are listed below:

Mol	Chain	Res	Type	Atoms	Z	Observed(°)	Ideal(°)
1	A	104	CYS	CA-CB-SG	-6.99	101.43	114.00
1	A	76	ARG	NE-CZ-NH1	6.24	123.42	120.30
1	A	76	ARG	NE-CZ-NH2	-6.17	117.22	120.30
1	B	51	LEU	CB-CG-CD2	6.01	121.22	111.00
1	A	161	ASP	CB-CG-OD2	-5.93	112.96	118.30
1	A	12	ARG	NE-CZ-NH1	5.83	123.22	120.30
1	A	161	ASP	CB-CG-OD1	5.59	123.33	118.30
1	B	193	ASP	CB-CG-OD2	-5.57	113.28	118.30
1	B	51	LEU	CA-CB-CG	5.45	127.84	115.30
1	B	72	ARG	NE-CZ-NH2	-5.26	117.67	120.30
1	A	176	GLN	N-CA-CB	5.21	119.98	110.60
1	B	193	ASP	CB-CG-OD1	5.05	122.84	118.30

Continued on next page...

Continued from previous page...

Mol	Chain	Res	Type	Atoms	Z	Observed(°)	Ideal(°)
1	A	177	VAL	N-CA-C	-5.02	97.44	111.00
1	B	171	TYR	N-CA-C	5.02	124.56	111.00

There are no chirality outliers.

All (3) planarity outliers are listed below:

Mol	Chain	Res	Type	Group
1	A	106	GLU	Peptide
1	A	141	GLU	Peptide
1	B	5	ALA	Peptide

5.2 Too-close contacts

In the following table, the Non-H and H(model) columns list the number of non-hydrogen atoms and hydrogen atoms in the chain respectively. The H(added) column lists the number of hydrogen atoms added and optimized by MolProbity. The Clashes column lists the number of clashes within the asymmetric unit, whereas Symm-Clashes lists symmetry related clashes.

Mol	Chain	Non-H	H(model)	H(added)	Clashes	Symm-Clashes
1	A	1970	0	1970	11	0
1	B	1986	0	1979	19	0
2	A	3	0	0	0	0
2	B	3	0	0	0	0
3	A	46	0	22	0	0
3	B	46	0	22	0	0
4	A	29	0	0	0	0
4	B	27	0	0	0	0
All	All	4110	0	3993	29	0

The all-atom clashscore is defined as the number of clashes found per 1000 atoms (including hydrogen atoms). The all-atom clashscore for this structure is 4.

All (29) close contacts within the same asymmetric unit are listed below, sorted by their clash magnitude.

Atom-1	Atom-2	Interatomic distance (Å)	Clash overlap (Å)
1:B:144:ASP:OD1	1:B:175:PHE:CE1	2.47	0.67
1:A:240:LEU:HD12	1:B:240:LEU:HD12	1.76	0.67
1:A:46:HIS:O	1:A:49:GLU:O	2.15	0.65
1:B:99:ILE:HD11	1:B:131:LEU:HG	1.79	0.65

Continued on next page...

Continued from previous page...

Atom-1	Atom-2	Interatomic distance (Å)	Clash overlap (Å)
1:A:46:HIS:HB3	1:A:49:GLU:O	2.00	0.61
1:A:136:LEU:O	1:A:139:SER:O	2.21	0.58
1:A:116:LEU:CD2	1:A:127:LEU:HD13	2.39	0.52
1:B:90:GLU:HG2	1:B:91:PRO:HD2	1.91	0.51
1:B:116:LEU:CD2	1:B:127:LEU:HD13	2.41	0.51
1:B:66:LEU:HB3	1:B:70:MET:HE2	1.93	0.49
1:B:99:ILE:HD11	1:B:131:LEU:CG	2.42	0.49
1:B:151:HIS:HE1	1:B:176:GLN:O	1.95	0.49
1:B:136:LEU:HD13	1:B:159:ILE:HD11	1.94	0.48
1:A:66:LEU:HB3	1:A:70:MET:CE	2.44	0.48
1:B:174:LYS:O	1:B:176:GLN:HG3	2.14	0.47
1:B:175:PHE:O	1:B:176:GLN:C	2.53	0.47
1:A:200:LEU:HD23	1:A:200:LEU:C	2.35	0.47
1:B:45[B]:ARG:O	1:B:45[B]:ARG:CG	2.64	0.46
1:B:107:LEU:HD22	1:B:146:LEU:HB2	1.97	0.46
1:A:260:GLN:OE1	1:A:260:GLN:N	2.50	0.45
1:B:100:SER:O	1:B:103:HIS:HB2	2.17	0.44
1:A:66:LEU:HB3	1:A:70:MET:HE2	2.00	0.44
1:A:186:PHE:HB3	1:A:200:LEU:HD12	1.99	0.43
1:A:174:LYS:O	1:A:175:PHE:O	2.37	0.42
1:B:136:LEU:HD21	1:B:175:PHE:CB	2.50	0.42
1:B:55:ASP:N	1:B:55:ASP:OD1	2.48	0.41
1:B:107:LEU:HD21	1:B:142:VAL:HG22	2.02	0.41
1:B:46:HIS:HA	1:B:47:PRO:HD2	1.98	0.40
1:B:99:ILE:CD1	1:B:131:LEU:HD21	2.51	0.40

There are no symmetry-related clashes.

5.3 Torsion angles

5.3.1 Protein backbone

In the following table, the Percentiles column shows the percent Ramachandran outliers of the chain as a percentile score with respect to all X-ray entries followed by that with respect to entries of similar resolution.

The Analysed column shows the number of residues for which the backbone conformation was analysed, and the total number of residues.

Mol	Chain	Analysed	Favoured	Allowed	Outliers	Percentiles
1	A	248/263 (94%)	225 (91%)	16 (6%)	7 (3%)	6 3

Continued on next page...

Continued from previous page...

Mol	Chain	Analysed	Favoured	Allowed	Outliers	Percentiles	
1	B	250/263 (95%)	228 (91%)	19 (8%)	3 (1%)	15	16
All	All	498/526 (95%)	453 (91%)	35 (7%)	10 (2%)	9	6

All (10) Ramachandran outliers are listed below:

Mol	Chain	Res	Type
1	A	175	PHE
1	B	171	TYR
1	A	174	LYS
1	A	18	ASN
1	A	106	GLU
1	A	141	GLU
1	A	143	THR
1	B	18	ASN
1	B	176	GLN
1	A	137	ILE

5.3.2 Protein sidechains ⓘ

In the following table, the Percentiles column shows the percent sidechain outliers of the chain as a percentile score with respect to all X-ray entries followed by that with respect to entries of similar resolution.

The Analysed column shows the number of residues for which the sidechain conformation was analysed, and the total number of residues.

Mol	Chain	Analysed	Rotameric	Outliers	Percentiles	
1	A	212/220 (96%)	196 (92%)	16 (8%)	16	20
1	B	213/220 (97%)	201 (94%)	12 (6%)	25	33
All	All	425/440 (97%)	397 (93%)	28 (7%)	20	25

All (28) residues with a non-rotameric sidechain are listed below:

Mol	Chain	Res	Type
1	A	16	GLU
1	A	18	ASN
1	A	28	SER
1	A	41[A]	LEU
1	A	41[B]	LEU
1	A	48	ARG

Continued on next page...

Continued from previous page...

Mol	Chain	Res	Type
1	A	76	ARG
1	A	100	SER
1	A	103	HIS
1	A	145	ARG
1	A	173	ARG
1	A	174	LYS
1	A	177	VAL
1	A	193	ASP
1	A	211	ASP
1	A	252	SER
1	B	28	SER
1	B	51	LEU
1	B	55	ASP
1	B	80	GLU
1	B	90	GLU
1	B	100	SER
1	B	102	THR
1	B	134	ARG
1	B	136	LEU
1	B	140	SER
1	B	145	ARG
1	B	260	GLN

Some sidechains can be flipped to improve hydrogen bonding and reduce clashes. All (3) such sidechains are listed below:

Mol	Chain	Res	Type
1	A	103	HIS
1	A	176	GLN
1	B	94	HIS

5.3.3 RNA ⓘ

There are no RNA molecules in this entry.

5.4 Non-standard residues in protein, DNA, RNA chains ⓘ

There are no non-standard protein/DNA/RNA residues in this entry.

5.5 Carbohydrates

There are no carbohydrates in this entry.

5.6 Ligand geometry

Of 8 ligands modelled in this entry, 6 are monoatomic - leaving 2 for Mogul analysis.

In the following table, the Counts columns list the number of bonds (or angles) for which Mogul statistics could be retrieved, the number of bonds (or angles) that are observed in the model and the number of bonds (or angles) that are defined in the chemical component dictionary. The Link column lists molecule types, if any, to which the group is linked. The Z score for a bond length (or angle) is the number of standard deviations the observed value is removed from the expected value. A bond length (or angle) with $|Z| > 2$ is considered an outlier worth inspection. RMSZ is the root-mean-square of all Z scores of the bond lengths (or angles).

Mol	Type	Chain	Res	Link	Bond lengths			Bond angles		
					Counts	RMSZ	$\# Z > 2$	Counts	RMSZ	$\# Z > 2$
3	C2E	A	304	2	44,52,52	1.14	5 (11%)	50,82,82	2.26	18 (36%)
3	C2E	B	304	2	44,52,52	1.42	5 (11%)	50,82,82	2.25	16 (32%)

In the following table, the Chirals column lists the number of chiral outliers, the number of chiral centers analysed, the number of these observed in the model and the number defined in the chemical component dictionary. Similar counts are reported in the Torsion and Rings columns. '-' means no outliers of that kind were identified.

Mol	Type	Chain	Res	Link	Chirals	Torsions	Rings
3	C2E	A	304	2	-	0/22/62/62	0/6/7/7
3	C2E	B	304	2	-	0/22/62/62	0/6/7/7

All (10) bond length outliers are listed below:

Mol	Chain	Res	Type	Atoms	Z	Observed(Å)	Ideal(Å)
3	B	304	C2E	C41-N31	-2.23	1.32	1.35
3	A	304	C2E	C2'-C3'	-2.02	1.48	1.53
3	A	304	C2E	C51-C41	2.05	1.45	1.40
3	A	304	C2E	C6-C5	2.14	1.45	1.41
3	A	304	C2E	C61-C51	2.22	1.45	1.41
3	A	304	C2E	C5-C4	2.88	1.47	1.40
3	B	304	C2E	C5-C4	3.25	1.47	1.40
3	B	304	C2E	C61-C51	3.62	1.48	1.41
3	B	304	C2E	C51-C41	3.84	1.49	1.40
3	B	304	C2E	C6-C5	4.13	1.49	1.41

All (34) bond angle outliers are listed below:

Mol	Chain	Res	Type	Atoms	Z	Observed(°)	Ideal(°)
3	A	304	C2E	C61-C51-C41	-5.44	115.44	120.84
3	A	304	C2E	C5-C6-N1	-5.20	116.08	123.48
3	B	304	C2E	C5-C6-N1	-5.00	116.36	123.48
3	B	304	C2E	C6-C5-C4	-4.62	116.25	120.84
3	B	304	C2E	C51-C61-N11	-4.54	117.03	123.48
3	A	304	C2E	N31-C21-N11	-4.50	120.89	127.46
3	B	304	C2E	N3-C2-N1	-3.72	122.03	127.46
3	A	304	C2E	C51-C61-N11	-3.45	118.57	123.48
3	B	304	C2E	C41-C51-N71	-3.33	106.19	109.41
3	A	304	C2E	C1A-N91-C41	-3.05	121.37	126.64
3	A	304	C2E	O5'-P1-O1P	-2.86	97.69	109.25
3	B	304	C2E	C61-C51-C41	-2.84	118.02	120.84
3	B	304	C2E	O5A-P11-O11	-2.76	98.13	109.25
3	B	304	C2E	C4-C5-N7	-2.60	106.90	109.41
3	A	304	C2E	N3-C2-N1	-2.57	123.70	127.46
3	A	304	C2E	C5'-C4'-C3'	-2.56	105.64	114.30
3	A	304	C2E	O2A-C2A-C1A	-2.35	104.27	111.61
3	B	304	C2E	O5A-C5A-C4A	-2.32	100.76	109.00
3	B	304	C2E	O3'-P11-O11	-2.15	101.00	109.46
3	A	304	C2E	O2P-P1-O5'	2.02	117.66	108.14
3	B	304	C2E	O2P-P1-O1P	2.07	123.00	112.28
3	A	304	C2E	O21-P11-O11	2.10	123.15	112.28
3	A	304	C2E	O4'-C4'-C5'	2.15	116.65	109.40
3	B	304	C2E	O21-P11-O3'	2.15	115.12	106.49
3	A	304	C2E	C3A-C2A-C1A	2.20	104.89	99.95
3	A	304	C2E	C2-N3-C4	2.85	118.49	115.16
3	A	304	C2E	N21-C21-N11	2.94	121.95	117.24
3	B	304	C2E	C21-N31-C41	3.55	119.30	115.16
3	B	304	C2E	C61-N11-C21	3.60	121.23	116.06
3	B	304	C2E	C2-N3-C4	4.60	120.53	115.16
3	A	304	C2E	C61-N11-C21	4.72	122.85	116.06
3	A	304	C2E	C6-N1-C2	4.77	122.92	116.06
3	A	304	C2E	C21-N31-C41	5.30	121.35	115.16
3	B	304	C2E	C6-N1-C2	6.03	124.73	116.06

There are no chirality outliers.

There are no torsion outliers.

There are no ring outliers.

No monomer is involved in short contacts.

5.7 Other polymers

There are no such residues in this entry.

5.8 Polymer linkage issues

There are no chain breaks in this entry.

6 Fit of model and data ⓘ

6.1 Protein, DNA and RNA chains ⓘ

In the following table, the column labelled ‘#RSRZ> 2’ contains the number (and percentage) of RSRZ outliers, followed by percent RSRZ outliers for the chain as percentile scores relative to all X-ray entries and entries of similar resolution. The OWAB column contains the minimum, median, 95th percentile and maximum values of the occupancy-weighted average B-factor per residue. The column labelled ‘Q< 0.9’ lists the number of (and percentage) of residues with an average occupancy less than 0.9.

Mol	Chain	Analysed	<RSRZ>	#RSRZ>2	OWAB(Å ²)	Q<0.9
1	A	251/263 (95%)	0.29	19 (7%) 15 12	35, 68, 125, 162	0
1	B	252/263 (95%)	0.27	18 (7%) 17 14	31, 67, 118, 152	0
All	All	503/526 (95%)	0.28	37 (7%) 15 13	31, 68, 120, 162	0

All (37) RSRZ outliers are listed below:

Mol	Chain	Res	Type	RSRZ
1	B	261	GLY	12.3
1	B	175	PHE	8.8
1	A	261	GLY	8.3
1	B	104	CYS	6.5
1	A	4	VAL	6.4
1	A	5	ALA	6.2
1	A	3	ARG	6.0
1	A	137	ILE	5.7
1	B	174	LYS	5.6
1	B	176	GLN	5.3
1	B	103	HIS	4.7
1	B	173	ARG	4.6
1	B	16	GLU	4.5
1	A	141	GLU	4.4
1	B	5	ALA	4.3
1	A	16	GLU	4.2
1	B	260	GLN	3.8
1	A	260	GLN	3.7
1	A	12	ARG	3.7
1	B	139	SER	3.6
1	A	259	GLY	3.5
1	B	45[A]	ARG	3.4
1	A	142	VAL	3.3
1	B	18	ASN	3.2

Continued on next page...

Continued from previous page...

Mol	Chain	Res	Type	RSRZ
1	B	258	GLU	2.8
1	B	257	GLN	2.7
1	B	259	GLY	2.7
1	A	147	PHE	2.6
1	A	257	GLN	2.6
1	A	122	PRO	2.5
1	A	138	GLU	2.4
1	A	176	GLN	2.3
1	A	140	SER	2.3
1	B	12	ARG	2.3
1	A	45	ARG	2.1
1	B	171	TYR	2.1
1	A	258	GLU	2.0

6.2 Non-standard residues in protein, DNA, RNA chains [i](#)

There are no non-standard protein/DNA/RNA residues in this entry.

6.3 Carbohydrates [i](#)

There are no carbohydrates in this entry.

6.4 Ligands [i](#)

In the following table, the Atoms column lists the number of modelled atoms in the group and the number defined in the chemical component dictionary. LLDF column lists the quality of electron density of the group with respect to its neighbouring residues in protein, DNA or RNA chains. The B-factors column lists the minimum, median, 95th percentile and maximum values of B factors of atoms in the group. The column labelled 'Q< 0.9' lists the number of atoms with occupancy less than 0.9.

Mol	Type	Chain	Res	Atoms	RSCC	RSR	LLDF	B-factors(Å ²)	Q<0.9
2	CA	A	301	1/1	0.92	0.21	2.87	97,97,97,97	0
2	CA	B	302	1/1	0.99	0.14	0.59	45,45,45,45	0
2	CA	B	301	1/1	0.85	0.14	-0.13	94,94,94,94	0
3	C2E	A	304	46/46	0.97	0.13	-0.38	40,49,64,81	0
3	C2E	B	304	46/46	0.98	0.14	-0.60	34,46,55,68	0
2	CA	A	303	1/1	0.97	0.12	-0.84	53,53,53,53	0
2	CA	B	303	1/1	0.70	0.15	-	102,102,102,102	1
2	CA	A	302	1/1	0.89	0.13	-	92,92,92,92	0

6.5 Other polymers [i](#)

There are no such residues in this entry.