



# wwPDB X-ray Structure Validation Summary Report ⓘ

Feb 27, 2018 – 03:39 PM EST

PDB ID : 4Y9R  
Title : rat CYPOR mutant - G141del  
Authors : Xia, C.; Kim, J.J.P.  
Deposited on : 2015-02-17  
Resolution : 2.40 Å(reported)

This is a wwPDB X-ray Structure Validation Summary Report for a publicly released PDB entry.

We welcome your comments at [validation@mail.wwpdb.org](mailto:validation@mail.wwpdb.org)

A user guide is available at

<http://wwpdb.org/validation/2016/XrayValidationReportHelp>

with specific help available everywhere you see the ⓘ symbol.

---

The following versions of software and data (see [references ⓘ](#)) were used in the production of this report:

MolProbity	:	4.02b-467
Mogul	:	1.7.2 (RC1), CSD as538be (2017)
Xtriage (Phenix)	:	1.9-1692
EDS	:	rb-20030736
Percentile statistics	:	20161228.v01 (using entries in the PDB archive December 28th 2016)
Refmac	:	5.8.0135
CCP4	:	6.5.0
Ideal geometry (proteins)	:	Engh & Huber (2001)
Ideal geometry (DNA, RNA)	:	Parkinson et al. (1996)
Validation Pipeline (wwPDB-VP)	:	rb-20030736

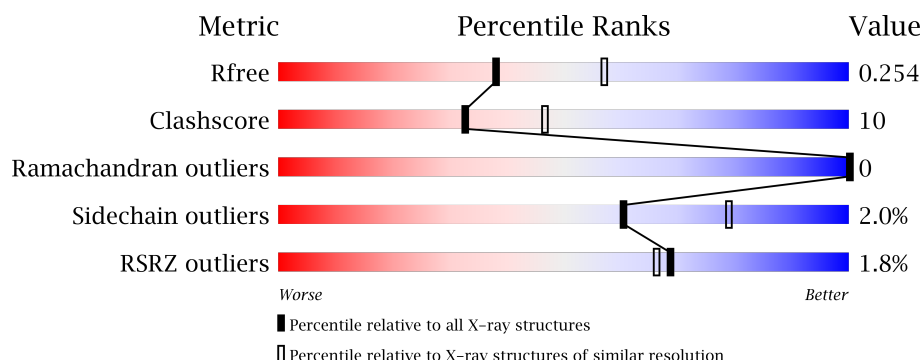
# 1 Overall quality at a glance

The following experimental techniques were used to determine the structure:

*X-RAY DIFFRACTION*

The reported resolution of this entry is 2.40 Å.

Percentile scores (ranging between 0-100) for global validation metrics of the entry are shown in the following graphic. The table shows the number of entries on which the scores are based.



Metric	Whole archive (#Entries)	Similar resolution (#Entries, resolution range(Å))
$R_{free}$	100719	3166 (2.40-2.40)
Clashscore	112137	3674 (2.40-2.40)
Ramachandran outliers	110173	3616 (2.40-2.40)
Sidechain outliers	110143	3617 (2.40-2.40)
RSRZ outliers	101464	3195 (2.40-2.40)

The table below summarises the geometric issues observed across the polymeric chains and their fit to the electron density. The red, orange, yellow and green segments on the lower bar indicate the fraction of residues that contain outliers for  $\geq 3$ , 2, 1 and 0 types of geometric quality criteria. A grey segment represents the fraction of residues that are not modelled. The numeric value for each fraction is indicated below the corresponding segment, with a dot representing fractions  $\leq 5\%$ . The upper red bar (where present) indicates the fraction of residues that have poor fit to the electron density. The numeric value is given above the bar.

Mol	Chain	Length	Quality of chain
1	A	621	
1	B	621	

## 2 Entry composition [i](#)

There are 6 unique types of molecules in this entry. The entry contains 10631 atoms, of which 0 are hydrogens and 0 are deuteriums.

In the tables below, the ZeroOcc column contains the number of atoms modelled with zero occupancy, the AltConf column contains the number of residues with at least one atom in alternate conformation and the Trace column contains the number of residues modelled with at most 2 atoms.

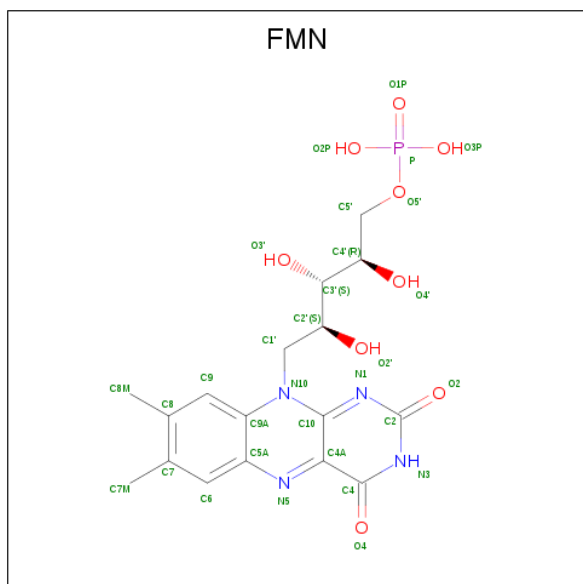
- Molecule 1 is a protein called NADPH–cytochrome P450 reductase.

Mol	Chain	Residues	Atoms					ZeroOcc	AltConf	Trace
1	A	608	Total	C	N	O	S	0	0	0
			4884	3095	840	926	23			
1	B	605	Total	C	N	O	S	0	0	0
			4866	3084	837	922	23			

There are 2 discrepancies between the modelled and reference sequences:

Chain	Residue	Modelled	Actual	Comment	Reference
A	?	-	GLY	deletion	UNP P00388
B	?	-	GLY	deletion	UNP P00388

- Molecule 2 is FLAVIN MONONUCLEOTIDE (three-letter code: FMN) (formula: C<sub>17</sub>H<sub>21</sub>N<sub>4</sub>O<sub>9</sub>P).



Mol	Chain	Residues	Atoms					ZeroOcc	AltConf
2	A	1	Total	C	N	O	P	0	0
			31	17	4	9	1		

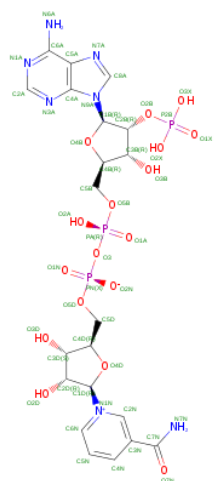
*Continued on next page...*

Mol	Chain	Residues	Atoms					ZeroOcc	AltConf
2	B	1	Total	C	N	O	P	0	0
			31	17	4	9	1		

- # FAD

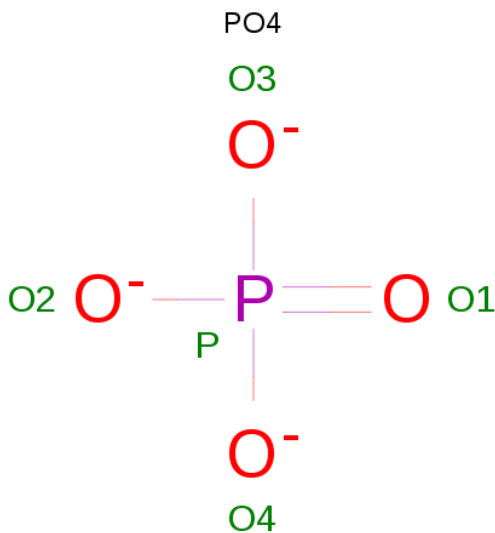
Mol	Chain	Residues	Atoms					ZeroOcc	AltConf
3	A	1	Total 53	C 27	N 9	O 15	P 2	0	0
3	B	1	Total 53	C 27	N 9	O 15	P 2	0	0

- 



Mol	Chain	Residues	Atoms					ZeroOcc	AltConf
4	A	1	Total 31	C 10	N 5	O 13	P 3	0	0
4	B	1	Total 31	C 10	N 5	O 13	P 3	0	0

- Molecule 5 is PHOSPHATE ION (three-letter code: PO4) (formula:  $O_4P$ ).



Mol	Chain	Residues	Atoms			ZeroOcc	AltConf
5	A	1	Total 5	O 4	P 1	0	0
5	B	1	Total 5	O 4	P 1	0	0

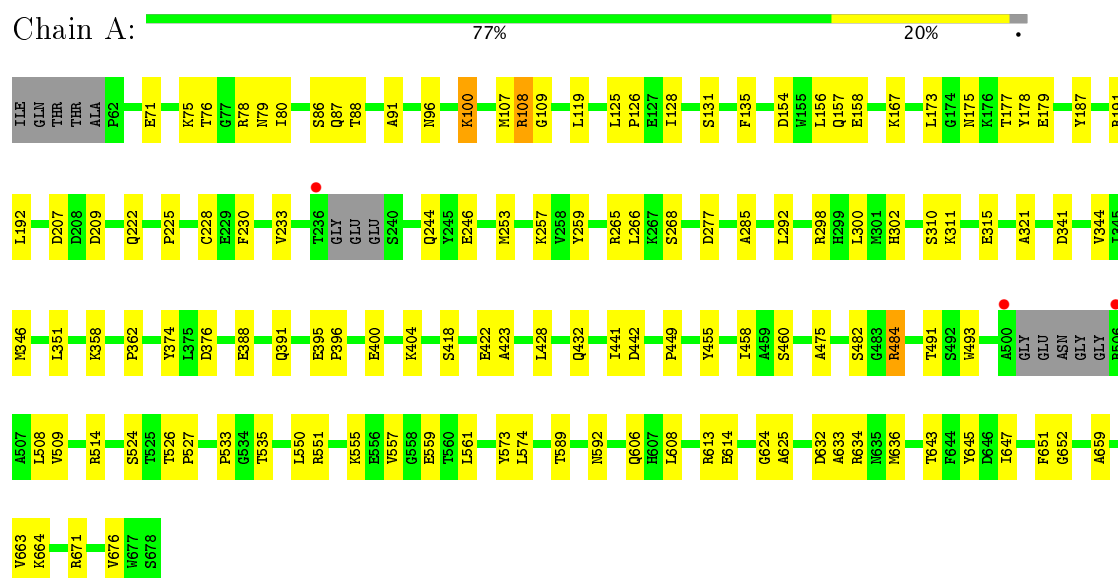
- Molecule 6 is water.

Mol	Chain	Residues	Atoms		ZeroOcc	AltConf
6	A	345	Total 345	O 345	0	0
6	B	296	Total 296	O 296	0	0

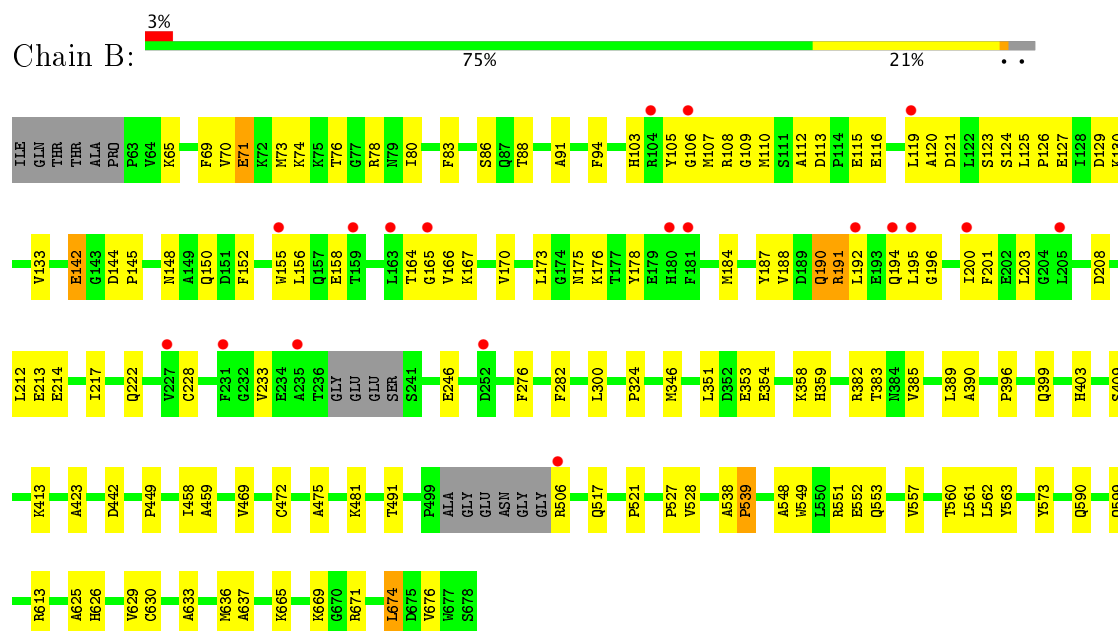
### 3 Residue-property plots

These plots are drawn for all protein, RNA and DNA chains in the entry. The first graphic for a chain summarises the proportions of the various outlier classes displayed in the second graphic. The second graphic shows the sequence view annotated by issues in geometry and electron density. Residues are color-coded according to the number of geometric quality criteria for which they contain at least one outlier: green = 0, yellow = 1, orange = 2 and red = 3 or more. A red dot above a residue indicates a poor fit to the electron density ( $RSRZ > 2$ ). Stretches of 2 or more consecutive residues without any outlier are shown as a green connector. Residues present in the sample, but not in the model, are shown in grey.

#### • Molecule 1: NADPH-cytochrome P450 reductase



#### • Molecule 1: NADPH-cytochrome P450 reductase



## 4 Data and refinement statistics

Property	Value	Source
Space group	P 21 21 21	Depositor
Cell constants a, b, c, $\alpha$ , $\beta$ , $\gamma$	102.03Å 115.89Å 119.66Å 90.00° 90.00° 90.00°	Depositor
Resolution (Å)	37.71 – 2.40 37.71 – 2.40	Depositor EDS
% Data completeness (in resolution range)	95.6 (37.71-2.40) 95.7 (37.71-2.40)	Depositor EDS
$R_{merge}$	0.07	Depositor
$R_{sym}$	(Not available)	Depositor
$\langle I/\sigma(I) \rangle$ <sup>1</sup>	3.68 (at 2.39Å)	Xtriage
Refinement program	CNS 1.3	Depositor
R, $R_{free}$	0.195 , 0.254 0.195 , 0.254	Depositor DCC
$R_{free}$ test set	2716 reflections (5.06%)	DCC
Wilson B-factor (Å <sup>2</sup> )	40.1	Xtriage
Anisotropy	0.242	Xtriage
Bulk solvent $k_{sol}$ (e/Å <sup>3</sup> ), $B_{sol}$ (Å <sup>2</sup> )	0.32 , 43.8	EDS
L-test for twinning <sup>2</sup>	$\langle  L  \rangle = 0.48$ , $\langle L^2 \rangle = 0.31$	Xtriage
Estimated twinning fraction	0.012 for -h,l,k	Xtriage
$F_o, F_c$ correlation	0.95	EDS
Total number of atoms	10631	wwPDB-VP
Average B, all atoms (Å <sup>2</sup> )	46.0	wwPDB-VP

Xtriage's analysis on translational NCS is as follows: *The largest off-origin peak in the Patterson function is 17.69% of the height of the origin peak. No significant pseudotranslation is detected.*

<sup>1</sup>Intensities estimated from amplitudes.

<sup>2</sup>Theoretical values of  $\langle |L| \rangle$ ,  $\langle L^2 \rangle$  for acentric reflections are 0.5, 0.333 respectively for untwinned datasets, and 0.375, 0.2 for perfectly twinned datasets.



## 5 Model quality [i](#)

### 5.1 Standard geometry [i](#)

Bond lengths and bond angles in the following residue types are not validated in this section: FMN, PO4, NAP, FAD

The Z score for a bond length (or angle) is the number of standard deviations the observed value is removed from the expected value. A bond length (or angle) with  $|Z| > 5$  is considered an outlier worth inspection. RMSZ is the root-mean-square of all Z scores of the bond lengths (or angles).

Mol	Chain	Bond lengths		Bond angles	
		RMSZ	$\# Z  > 5$	RMSZ	$\# Z  > 5$
1	A	0.35	0/5001	0.58	0/6767
1	B	0.34	1/4982 (0.0%)	0.56	0/6740
All	All	0.35	1/9983 (0.0%)	0.57	0/13507

All (1) bond length outliers are listed below:

Mol	Chain	Res	Type	Atoms	Z	Observed(Å)	Ideal(Å)
1	B	539	PRO	N-CD	5.11	1.55	1.47

There are no bond angle outliers.

There are no chirality outliers.

There are no planarity outliers.

### 5.2 Too-close contacts [i](#)

In the following table, the Non-H and H(model) columns list the number of non-hydrogen atoms and hydrogen atoms in the chain respectively. The H(added) column lists the number of hydrogen atoms added and optimized by MolProbity. The Clashes column lists the number of clashes within the asymmetric unit, whereas Symm-Clashes lists symmetry related clashes.

Mol	Chain	Non-H	H(model)	H(added)	Clashes	Symm-Clashes
1	A	4884	0	4737	95	0
1	B	4866	0	4720	98	0
2	A	31	0	19	1	0
2	B	31	0	19	1	0
3	A	53	0	31	0	0
3	B	53	0	31	0	0
4	A	31	0	11	2	0
4	B	31	0	11	0	0

*Continued on next page...*

*Continued from previous page...*

Mol	Chain	Non-H	H(model)	H(added)	Clashes	Symm-Clashes
5	A	5	0	0	0	0
5	B	5	0	0	0	0
6	A	345	0	0	6	0
6	B	296	0	0	8	0
All	All	10631	0	9579	193	0

The all-atom clashscore is defined as the number of clashes found per 1000 atoms (including hydrogen atoms). The all-atom clashscore for this structure is 10.

The worst 5 of 193 close contacts within the same asymmetric unit are listed below, sorted by their clash magnitude.

Atom-1	Atom-2	Interatomic distance (Å)	Clash overlap (Å)
1:B:86:SER:HB3	1:B:91:ALA:HB3	1.52	0.92
1:A:550:LEU:HD22	1:A:555:LYS:HD2	1.60	0.81
1:B:123:SER:O	1:B:126:PRO:HD2	1.82	0.80
1:A:418:SER:HA	1:A:422:GLU:HB3	1.67	0.77
1:B:472:CYS:HB3	1:B:538:ALA:HB2	1.69	0.74

There are no symmetry-related clashes.

## 5.3 Torsion angles [i](#)

### 5.3.1 Protein backbone [i](#)

In the following table, the Percentiles column shows the percent Ramachandran outliers of the chain as a percentile score with respect to all X-ray entries followed by that with respect to entries of similar resolution.

The Analysed column shows the number of residues for which the backbone conformation was analysed, and the total number of residues.

Mol	Chain	Analysed	Favoured	Allowed	Outliers	Percentiles	
1	A	602/621 (97%)	582 (97%)	20 (3%)	0	100	100
1	B	599/621 (96%)	568 (95%)	31 (5%)	0	100	100
All	All	1201/1242 (97%)	1150 (96%)	51 (4%)	0	100	100

There are no Ramachandran outliers to report.

### 5.3.2 Protein sidechains [i](#)

In the following table, the Percentiles column shows the percent sidechain outliers of the chain as a percentile score with respect to all X-ray entries followed by that with respect to entries of similar resolution.

The Analysed column shows the number of residues for which the sidechain conformation was analysed, and the total number of residues.

Mol	Chain	Analysed	Rotameric	Outliers	Percentiles	
1	A	523/531 (98%)	516 (99%)	7 (1%)	73	87
1	B	521/531 (98%)	507 (97%)	14 (3%)	50	71
All	All	1044/1062 (98%)	1023 (98%)	21 (2%)	60	79

5 of 21 residues with a non-rotameric sidechain are listed below:

Mol	Chain	Res	Type
1	B	142	GLU
1	B	158	GLU
1	B	442	ASP
1	B	88	THR
1	B	506	ARG

Some sidechains can be flipped to improve hydrogen bonding and reduce clashes. All (4) such sidechains are listed below:

Mol	Chain	Res	Type
1	A	391	GLN
1	A	486	ASN
1	B	399	GLN
1	B	486	ASN

### 5.3.3 RNA [i](#)

There are no RNA molecules in this entry.

## 5.4 Non-standard residues in protein, DNA, RNA chains [i](#)

There are no non-standard protein/DNA/RNA residues in this entry.

## 5.5 Carbohydrates ⓘ

There are no carbohydrates in this entry.

## 5.6 Ligand geometry ⓘ

8 ligands are modelled in this entry.

In the following table, the Counts columns list the number of bonds (or angles) for which Mogul statistics could be retrieved, the number of bonds (or angles) that are observed in the model and the number of bonds (or angles) that are defined in the Chemical Component Dictionary. The Link column lists molecule types, if any, to which the group is linked. The Z score for a bond length (or angle) is the number of standard deviations the observed value is removed from the expected value. A bond length (or angle) with  $|Z| > 2$  is considered an outlier worth inspection. RMSZ is the root-mean-square of all Z scores of the bond lengths (or angles).

Mol	Type	Chain	Res	Link	Bond lengths			Bond angles		
					Counts	RMSZ	# Z  > 2	Counts	RMSZ	# Z  > 2
2	FMN	A	701	-	31,33,33	2.87	13 (41%)	38,50,50	3.39	15 (39%)
3	FAD	A	702	-	51,58,58	2.21	10 (19%)	54,89,89	2.30	8 (14%)
4	NAP	A	703	-	28,33,52	1.61	3 (10%)	32,52,80	2.60	6 (18%)
5	PO4	A	704	-	4,4,4	1.35	0	6,6,6	0.39	0
2	FMN	B	701	-	31,33,33	2.81	12 (38%)	38,50,50	3.39	14 (36%)
3	FAD	B	702	-	51,58,58	2.21	10 (19%)	54,89,89	2.30	10 (18%)
4	NAP	B	703	-	28,33,52	1.62	4 (14%)	32,52,80	2.52	3 (9%)
5	PO4	B	704	-	4,4,4	1.30	0	6,6,6	0.39	0

In the following table, the Chirals column lists the number of chiral outliers, the number of chiral centers analysed, the number of these observed in the model and the number defined in the Chemical Component Dictionary. Similar counts are reported in the Torsion and Rings columns. '-' means no outliers of that kind were identified.

Mol	Type	Chain	Res	Link	Chirals	Torsions	Rings
2	FMN	A	701	-	-	0/16/18/18	0/3/3/3
3	FAD	A	702	-	-	0/28/50/50	0/6/6/6
4	NAP	A	703	-	-	0/17/37/67	0/3/3/5
5	PO4	A	704	-	-	0/0/0/0	0/0/0/0
2	FMN	B	701	-	-	0/16/18/18	0/3/3/3
3	FAD	B	702	-	-	0/28/50/50	0/6/6/6
4	NAP	B	703	-	-	0/17/37/67	0/3/3/5
5	PO4	B	704	-	-	0/0/0/0	0/0/0/0

The worst 5 of 52 bond length outliers are listed below:

Mol	Chain	Res	Type	Atoms	Z	Observed(Å)	Ideal(Å)
2	B	701	FMN	C8M-C8	-6.48	1.38	1.51
2	A	701	FMN	C8M-C8	-6.01	1.39	1.51
3	B	702	FAD	C7M-C7	-5.85	1.39	1.51
3	B	702	FAD	C8M-C8	-5.84	1.39	1.51
3	A	702	FAD	C7M-C7	-5.81	1.39	1.51

The worst 5 of 56 bond angle outliers are listed below:

Mol	Chain	Res	Type	Atoms	Z	Observed(°)	Ideal(°)
3	A	702	FAD	N3A-C2A-N1A	-13.19	117.37	128.86
3	B	702	FAD	N3A-C2A-N1A	-12.99	117.54	128.86
4	A	703	NAP	N3A-C2A-N1A	-12.74	117.76	128.86
4	B	703	NAP	N3A-C2A-N1A	-12.54	117.94	128.86
2	B	701	FMN	C4-C4A-C10	-6.27	114.89	119.96

There are no chirality outliers.

There are no torsion outliers.

There are no ring outliers.

3 monomers are involved in 4 short contacts:

Mol	Chain	Res	Type	Clashes	Symm-Clashes
2	A	701	FMN	1	0
4	A	703	NAP	2	0
2	B	701	FMN	1	0

## 5.7 Other polymers [i](#)

There are no such residues in this entry.

## 5.8 Polymer linkage issues [i](#)

There are no chain breaks in this entry.

## 6 Fit of model and data ⓘ

### 6.1 Protein, DNA and RNA chains ⓘ

In the following table, the column labelled ‘#RSRZ> 2’ contains the number (and percentage) of RSRZ outliers, followed by percent RSRZ outliers for the chain as percentile scores relative to all X-ray entries and entries of similar resolution. The OWAB column contains the minimum, median, 95<sup>th</sup> percentile and maximum values of the occupancy-weighted average B-factor per residue. The column labelled ‘Q< 0.9’ lists the number of (and percentage) of residues with an average occupancy less than 0.9.

Mol	Chain	Analysed	<RSRZ>	#RSRZ>2	OWAB(Å <sup>2</sup> )	Q<0.9
1	A	608/621 (97%)	-0.44	3 (0%) 90 89	26, 40, 60, 81	1 (0%)
1	B	605/621 (97%)	-0.10	19 (3%) 49 47	24, 47, 88, 99	0
All	All	1213/1242 (97%)	-0.27	22 (1%) 69 66	24, 42, 81, 99	1 (0%)

The worst 5 of 22 RSRZ outliers are listed below:

Mol	Chain	Res	Type	RSRZ
1	B	163	LEU	3.8
1	B	506	ARG	3.7
1	B	235	ALA	3.3
1	A	506	ARG	3.3
1	B	192	LEU	3.1

### 6.2 Non-standard residues in protein, DNA, RNA chains ⓘ

There are no non-standard protein/DNA/RNA residues in this entry.

### 6.3 Carbohydrates ⓘ

There are no carbohydrates in this entry.

### 6.4 Ligands ⓘ

In the following table, the Atoms column lists the number of modelled atoms in the group and the number defined in the chemical component dictionary. LLDF column lists the quality of electron density of the group with respect to its neighbouring residues in protein, DNA or RNA chains. The B-factors column lists the minimum, median, 95<sup>th</sup> percentile and maximum values of B factors of atoms in the group. The column labelled ‘Q< 0.9’ lists the number of atoms with occupancy less than 0.9.

Mol	Type	Chain	Res	Atoms	RSCC	RSR	LLDF	B-factors( $\text{\AA}^2$ )	Q<0.9
4	NAP	B	703	31/48	0.97	0.12	0.32	30,35,73,79	0
3	FAD	B	702	53/53	0.98	0.13	0.13	23,28,35,37	0
4	NAP	A	703	31/48	0.98	0.11	0.10	24,30,69,74	0
3	FAD	A	702	53/53	0.98	0.14	-0.23	23,29,39,41	0
2	FMN	A	701	31/31	0.95	0.15	-0.23	42,48,52,54	0
2	FMN	B	701	31/31	0.90	0.17	-0.52	60,67,70,70	0
5	PO4	B	704	5/5	0.88	0.14	-	103,104,104,104	0
5	PO4	A	704	5/5	0.57	0.49	-	146,146,147,147	0

## 6.5 Other polymers [i](#)

There are no such residues in this entry.