



# Full wwPDB X-ray Structure Validation Report ⓘ

Feb 13, 2017 – 03:49 am GMT

PDB ID : 4YAX  
Title : Crystal structure of TRIM24 PHD-bromodomain complexed with N-[6-(4-methoxyphenoxy)-1,3-dimethyl-2-oxo-2,3-dihydro-1H-1,3-benzodiazol-5-yl]benzenesulfonamide (5g)  
Authors : Poncet-Montange, G.; Palmer, W.; Jones, P.  
Deposited on : 2015-02-18  
Resolution : 2.25 Å(reported)

This is a Full wwPDB X-ray Structure Validation Report for a publicly released PDB entry.

We welcome your comments at [validation@mail.wwpdb.org](mailto:validation@mail.wwpdb.org)

A user guide is available at

<http://wwpdb.org/validation/2016/XrayValidationReportHelp>

with specific help available everywhere you see the ⓘ symbol.

---

The following versions of software and data (see [references ⓘ](#)) were used in the production of this report:

MolProbity	:	4.02b-467
Mogul	:	1.7.2 (RC1), CSD as538be (2017)
Xtriage (Phenix)	:	1.9-1692
EDS	:	trunk28620
Percentile statistics	:	20161228.v01 (using entries in the PDB archive December 28th 2016)
Refmac	:	5.8.0135
CCP4	:	6.5.0
Ideal geometry (proteins)	:	Engh & Huber (2001)
Ideal geometry (DNA, RNA)	:	Parkinson et al. (1996)
Validation Pipeline (wwPDB-VP)	:	recalc28949

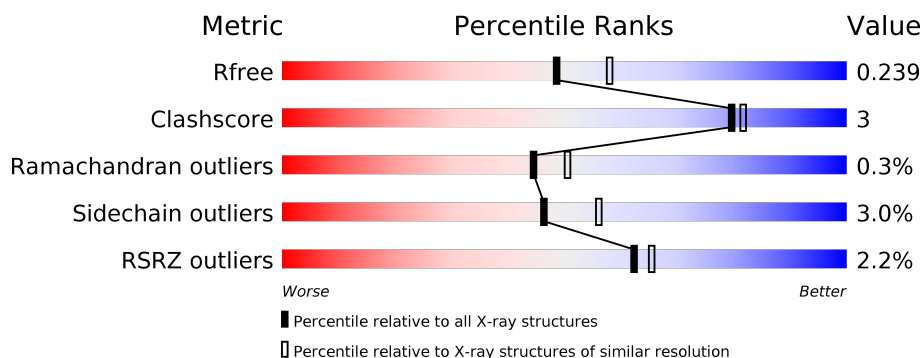
# 1 Overall quality at a glance

The following experimental techniques were used to determine the structure:

*X-RAY DIFFRACTION*

The reported resolution of this entry is 2.25 Å.

Percentile scores (ranging between 0-100) for global validation metrics of the entry are shown in the following graphic. The table shows the number of entries on which the scores are based.



Metric	Whole archive (#Entries)	Similar resolution (#Entries, resolution range(Å))
$R_{free}$	100719	1062 (2.26-2.26)
Clashscore	112137	1178 (2.26-2.26)
Ramachandran outliers	110173	1145 (2.26-2.26)
Sidechain outliers	110143	1146 (2.26-2.26)
RSRZ outliers	101464	1066 (2.26-2.26)

The table below summarises the geometric issues observed across the polymeric chains and their fit to the electron density. The red, orange, yellow and green segments on the lower bar indicate the fraction of residues that contain outliers for  $\geq 3$ , 2, 1 and 0 types of geometric quality criteria. A grey segment represents the fraction of residues that are not modelled. The numeric value for each fraction is indicated below the corresponding segment, with a dot representing fractions  $\leq 5\%$ . The upper red bar (where present) indicates the fraction of residues that have poor fit to the electron density. The numeric value is given above the bar.

Mol	Chain	Length	Quality of chain
1	A	184	<div> <div>2%</div> <div> <div></div> <div>90%</div> <div>8%</div> <div>••</div> </div> </div>
1	B	184	<div> <div>3%</div> <div> <div></div> <div>87%</div> <div>9%</div> <div>••</div> </div> </div>

The following table lists non-polymeric compounds, carbohydrate monomers and non-standard residues in protein, DNA, RNA chains that are outliers for geometric or electron-density-fit criteria:

Mol	Type	Chain	Res	Chirality	Geometry	Clashes	Electron density
4	GOL	A	1104	-	-	-	X

## 2 Entry composition [i](#)

There are 6 unique types of molecules in this entry. The entry contains 3397 atoms, of which 0 are hydrogens and 0 are deuteriums.

In the tables below, the ZeroOcc column contains the number of atoms modelled with zero occupancy, the AltConf column contains the number of residues with at least one atom in alternate conformation and the Trace column contains the number of residues modelled with at most 2 atoms.

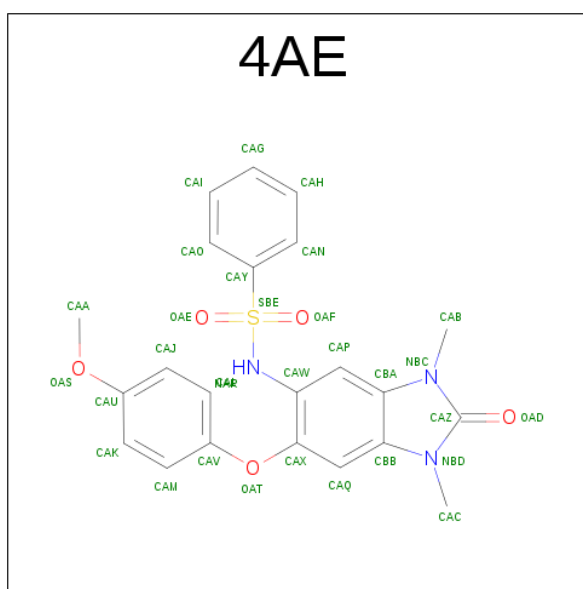
- Molecule 1 is a protein called Transcription intermediary factor 1-alpha.

Mol	Chain	Residues	Atoms					ZeroOcc	AltConf	Trace
1	A	180	Total	C	N	O	S	0	2	0
			1469	942	233	279	15			
1	B	178	Total	C	N	O	S	0	4	0
			1467	944	232	276	15			

There are 2 discrepancies between the modelled and reference sequences:

Chain	Residue	Modelled	Actual	Comment	Reference
A	823	SER	-	expression tag	UNP O15164
B	823	SER	-	expression tag	UNP O15164

- Molecule 2 is N-[6-(4-methoxyphenoxy)-1,3-dimethyl-2-oxo-2,3-dihydro-1H-benzimidazol-5-yl]benzenesulfonamide (three-letter code: 4AE) (formula: C<sub>22</sub>H<sub>21</sub>N<sub>3</sub>O<sub>5</sub>S).



Mol	Chain	Residues	Atoms					ZeroOcc	AltConf
2	A	1	Total	C	N	O	S	0	0
			31	22	3	5	1		

*Continued on next page...*

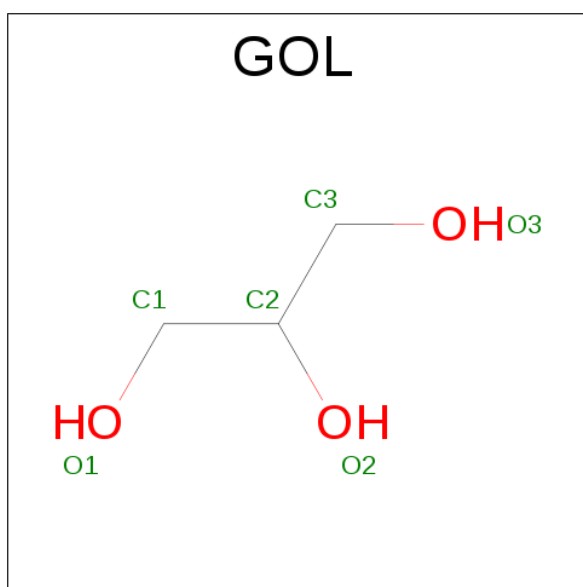
*Continued from previous page...*

Mol	Chain	Residues	Atoms					ZeroOcc	AltConf
2	B	1	Total	C	N	O	S	0	0
			31	22	3	5	1		

- Molecule 3 is ZINC ION (three-letter code: ZN) (formula: Zn).

Mol	Chain	Residues	Atoms		ZeroOcc	AltConf
3	B	2	Total	Zn	0	0
			2	2		
3	A	2	Total	Zn	0	0
			2	2		

- Molecule 4 is GLYCEROL (three-letter code: GOL) (formula: C<sub>3</sub>H<sub>8</sub>O<sub>3</sub>).



Mol	Chain	Residues	Atoms			ZeroOcc	AltConf
4	A	1	Total	C	O	0	0
			6	3	3		

- Molecule 5 is SULFATE ION (three-letter code: SO4) (formula: O<sub>4</sub>S).



Mol	Chain	Residues	Atoms			ZeroOcc	AltConf
5	B	1	Total	O	S	0	0
			5	4	1		

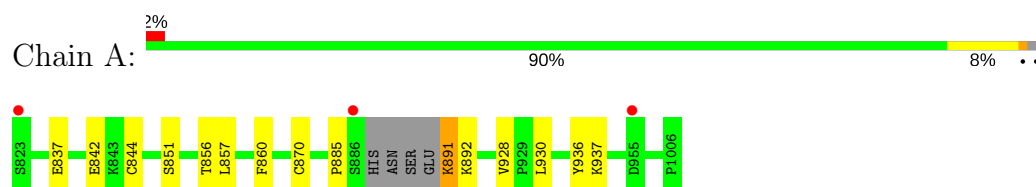
- Molecule 6 is water.

Mol	Chain	Residues	Atoms		ZeroOcc	AltConf
6	A	199	Total	O	0	0
			199	199		
6	B	185	Total	O	0	0
			185	185		

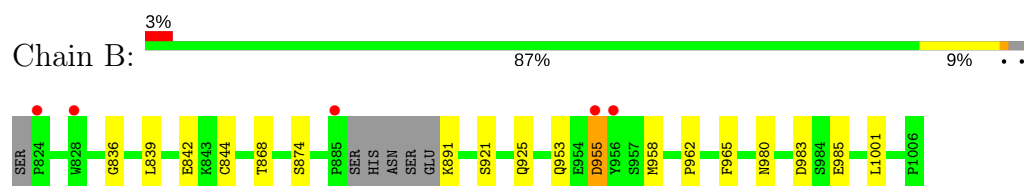
### 3 Residue-property plots [i](#)

These plots are drawn for all protein, RNA and DNA chains in the entry. The first graphic for a chain summarises the proportions of the various outlier classes displayed in the second graphic. The second graphic shows the sequence view annotated by issues in geometry and electron density. Residues are color-coded according to the number of geometric quality criteria for which they contain at least one outlier: green = 0, yellow = 1, orange = 2 and red = 3 or more. A red dot above a residue indicates a poor fit to the electron density ( $RSRZ > 2$ ). Stretches of 2 or more consecutive residues without any outlier are shown as a green connector. Residues present in the sample, but not in the model, are shown in grey.

- Molecule 1: Transcription intermediary factor 1-alpha



- Molecule 1: Transcription intermediary factor 1-alpha



## 4 Data and refinement statistics

Property	Value	Source
Space group	C 1 2 1	Depositor
Cell constants a, b, c, $\alpha$ , $\beta$ , $\gamma$	90.04Å 37.11Å 128.75Å 90.00° 110.41° 90.00°	Depositor
Resolution (Å)	120.67 – 2.25 60.33 – 2.25	Depositor EDS
% Data completeness (in resolution range)	95.6 (120.67-2.25) 95.6 (60.33-2.25)	Depositor EDS
$R_{merge}$	0.12	Depositor
$R_{sym}$	(Not available)	Depositor
$\langle I/\sigma(I) \rangle$ <sup>1</sup>	2.79 (at 2.25Å)	Xtriage
Refinement program	REFMAC 5.8.0073	Depositor
R, $R_{free}$	0.170 , 0.235 0.177 , 0.239	Depositor DCC
$R_{free}$ test set	969 reflections (5.51%)	DCC
Wilson B-factor (Å <sup>2</sup> )	21.8	Xtriage
Anisotropy	0.051	Xtriage
Bulk solvent $k_{sol}$ (e/Å <sup>3</sup> ), $B_{sol}$ (Å <sup>2</sup> )	0.35 , 49.2	EDS
L-test for twinning <sup>2</sup>	$\langle  L  \rangle = 0.49$ , $\langle L^2 \rangle = 0.32$	Xtriage
Estimated twinning fraction	0.016 for h,-k,-h-l	Xtriage
$F_o, F_c$ correlation	0.95	EDS
Total number of atoms	3397	wwPDB-VP
Average B, all atoms (Å <sup>2</sup> )	27.0	wwPDB-VP

Xtriage's analysis on translational NCS is as follows: *The largest off-origin peak in the Patterson function is 7.78% of the height of the origin peak. No significant pseudotranslation is detected.*

<sup>1</sup>Intensities estimated from amplitudes.

<sup>2</sup>Theoretical values of  $\langle |L| \rangle$ ,  $\langle L^2 \rangle$  for acentric reflections are 0.5, 0.333 respectively for untwinned datasets, and 0.375, 0.2 for perfectly twinned datasets.



## 5 Model quality

### 5.1 Standard geometry

Bond lengths and bond angles in the following residue types are not validated in this section: GOL, ZN, SO4, 4AE

The Z score for a bond length (or angle) is the number of standard deviations the observed value is removed from the expected value. A bond length (or angle) with  $|Z| > 5$  is considered an outlier worth inspection. RMSZ is the root-mean-square of all Z scores of the bond lengths (or angles).

Mol	Chain	Bond lengths		Bond angles	
		RMSZ	$\# Z  > 5$	RMSZ	$\# Z  > 5$
1	A	0.59	0/1509	0.69	0/2042
1	B	0.54	0/1513	0.66	0/2047
All	All	0.56	0/3022	0.68	0/4089

There are no bond length outliers.

There are no bond angle outliers.

There are no chirality outliers.

There are no planarity outliers.

### 5.2 Too-close contacts

In the following table, the Non-H and H(model) columns list the number of non-hydrogen atoms and hydrogen atoms in the chain respectively. The H(added) column lists the number of hydrogen atoms added and optimized by MolProbity. The Clashes column lists the number of clashes within the asymmetric unit, whereas Symm-Clashes lists symmetry related clashes.

Mol	Chain	Non-H	H(model)	H(added)	Clashes	Symm-Clashes
1	A	1469	0	1430	6	0
1	B	1467	0	1438	13	0
2	A	31	0	21	0	0
2	B	31	0	21	1	0
3	A	2	0	0	0	0
3	B	2	0	0	0	0
4	A	6	0	8	1	0
5	B	5	0	0	0	0
6	A	199	0	0	1	0
6	B	185	0	0	7	0
All	All	3397	0	2918	19	0

The all-atom clashscore is defined as the number of clashes found per 1000 atoms (including hydrogen atoms). The all-atom clashscore for this structure is 3.

All (19) close contacts within the same asymmetric unit are listed below, sorted by their clash magnitude.

Atom-1	Atom-2	Interatomic distance (Å)	Clash overlap (Å)
1:A:930:LEU:O	6:A:1201:HOH:O	2.11	0.68
1:B:955:ASP:OD1	1:B:955:ASP:N	2.27	0.65
1:B:891:LYS:NZ	6:B:1202:HOH:O	2.32	0.63
1:B:844:CYS:SG	6:B:1244:HOH:O	2.56	0.61
1:A:928:VAL:O	1:A:936:TYR:OH	2.14	0.60
4:A:1104:GOL:H12	1:B:836:GLY:H	1.70	0.55
1:A:844:CYS:HB3	1:A:870:CYS:SG	2.48	0.54
1:B:953:GLN:HB3	6:B:1381:HOH:O	2.09	0.52
1:B:921:SER:O	1:B:925:GLN:HG3	2.10	0.51
1:B:839:LEU:HD23	6:B:1338:HOH:O	2.11	0.49
1:B:985:GLU:HG3	6:B:1246:HOH:O	2.12	0.48
1:B:962:PRO:HA	1:B:965:PHE:CE2	2.50	0.47
1:B:1001[B]:LEU:HD23	1:B:1001[B]:LEU:HA	1.72	0.45
1:B:953:GLN:O	6:B:1385:HOH:O	2.21	0.45
1:A:851:SER:HA	1:A:856:THR:HG23	1.98	0.44
1:B:958:MET:HG2	6:B:1288:HOH:O	2.18	0.43
1:A:891:LYS:CE	1:A:891:LYS:HA	2.50	0.41
1:A:837:GLU:HG3	1:A:860:PHE:CZ	2.56	0.41
1:B:980:ASN:OD1	2:B:1104:4AE:H14	2.21	0.41

There are no symmetry-related clashes.

## 5.3 Torsion angles [i](#)

### 5.3.1 Protein backbone [i](#)

In the following table, the Percentiles column shows the percent Ramachandran outliers of the chain as a percentile score with respect to all X-ray entries followed by that with respect to entries of similar resolution.

The Analysed column shows the number of residues for which the backbone conformation was analysed, and the total number of residues.

Mol	Chain	Analysed	Favoured	Allowed	Outliers	Percentiles
1	A	178/184 (97%)	176 (99%)	1 (1%)	1 (1%)	28 29
1	B	178/184 (97%)	175 (98%)	3 (2%)	0	100 100

*Continued on next page...*

*Continued from previous page...*

Mol	Chain	Analysed	Favoured	Allowed	Outliers	Percentiles
All	All	356/368 (97%)	351 (99%)	4 (1%)	1 (0%)	44 50

All (1) Ramachandran outliers are listed below:

Mol	Chain	Res	Type
1	A	885	PRO

### 5.3.2 Protein sidechains ⓘ

In the following table, the Percentiles column shows the percent sidechain outliers of the chain as a percentile score with respect to all X-ray entries followed by that with respect to entries of similar resolution.

The Analysed column shows the number of residues for which the sidechain conformation was analysed, and the total number of residues.

Mol	Chain	Analysed	Rotameric	Outliers	Percentiles
1	A	170/172 (99%)	164 (96%)	6 (4%)	41 50
1	B	170/172 (99%)	165 (97%)	5 (3%)	48 57
All	All	340/344 (99%)	329 (97%)	11 (3%)	46 54

All (11) residues with a non-rotameric sidechain are listed below:

Mol	Chain	Res	Type
1	A	842	GLU
1	A	857[A]	LEU
1	A	857[B]	LEU
1	A	891	LYS
1	A	892	LYS
1	A	937	LYS
1	B	842	GLU
1	B	868	THR
1	B	874	SER
1	B	955	ASP
1	B	983	ASP

Some sidechains can be flipped to improve hydrogen bonding and reduce clashes. There are no such sidechains identified.

### 5.3.3 RNA ⓘ

There are no RNA molecules in this entry.

## 5.4 Non-standard residues in protein, DNA, RNA chains ⓘ

There are no non-standard protein/DNA/RNA residues in this entry.

## 5.5 Carbohydrates ⓘ

There are no carbohydrates in this entry.

## 5.6 Ligand geometry ⓘ

Of 8 ligands modelled in this entry, 4 are monoatomic - leaving 4 for Mogul analysis.

In the following table, the Counts columns list the number of bonds (or angles) for which Mogul statistics could be retrieved, the number of bonds (or angles) that are observed in the model and the number of bonds (or angles) that are defined in the chemical component dictionary. The Link column lists molecule types, if any, to which the group is linked. The Z score for a bond length (or angle) is the number of standard deviations the observed value is removed from the expected value. A bond length (or angle) with  $|Z| > 2$  is considered an outlier worth inspection. RMSZ is the root-mean-square of all Z scores of the bond lengths (or angles).

Mol	Type	Chain	Res	Link	Bond lengths			Bond angles		
					Counts	RMSZ	# $ Z  > 2$	Counts	RMSZ	# $ Z  > 2$
2	4AE	A	1101	-	31,34,34	3.77	8 (25%)	39,50,50	1.86	4 (10%)
4	GOL	A	1104	-	5,5,5	0.37	0	5,5,5	0.37	0
5	SO4	B	1103	-	4,4,4	0.45	0	6,6,6	0.18	0
2	4AE	B	1104	-	31,34,34	3.60	7 (22%)	39,50,50	1.96	4 (10%)

In the following table, the Chirals column lists the number of chiral outliers, the number of chiral centers analysed, the number of these observed in the model and the number defined in the chemical component dictionary. Similar counts are reported in the Torsion and Rings columns. '-' means no outliers of that kind were identified.

Mol	Type	Chain	Res	Link	Chirals	Torsions	Rings
2	4AE	A	1101	-	-	0/17/17/17	0/4/4/4
4	GOL	A	1104	-	-	0/4/4/4	0/0/0/0
5	SO4	B	1103	-	-	0/0/0/0	0/0/0/0
2	4AE	B	1104	-	-	0/17/17/17	0/4/4/4

All (15) bond length outliers are listed below:

Mol	Chain	Res	Type	Atoms	Z	Observed(Å)	Ideal(Å)
2	B	1104	4AE	CAW-NAR	-4.42	1.35	1.42
2	A	1101	4AE	CAW-NAR	-3.27	1.37	1.42
2	B	1104	4AE	CAP-CBA	-3.07	1.34	1.40
2	B	1104	4AE	CAQ-CBB	-3.01	1.34	1.40
2	A	1101	4AE	CAQ-CBB	-2.97	1.34	1.40
2	A	1101	4AE	CAP-CBA	-2.84	1.34	1.40
2	A	1101	4AE	CBA-CBB	-2.11	1.34	1.39
2	A	1101	4AE	CAQ-CAX	2.16	1.40	1.36
2	B	1104	4AE	CAY-SBE	3.86	1.82	1.76
2	B	1104	4AE	OAE-SBE	9.26	1.53	1.43
2	A	1101	4AE	OAE-SBE	9.63	1.53	1.43
2	B	1104	4AE	OAF-SBE	10.23	1.54	1.43
2	A	1101	4AE	OAF-SBE	10.37	1.54	1.43
2	B	1104	4AE	SBE-NAR	11.83	1.84	1.63
2	A	1101	4AE	SBE-NAR	13.67	1.87	1.63

All (8) bond angle outliers are listed below:

Mol	Chain	Res	Type	Atoms	Z	Observed(°)	Ideal(°)
2	B	1104	4AE	OAE-SBE-OAF	-8.33	108.89	119.55
2	A	1101	4AE	OAE-SBE-OAF	-7.61	109.81	119.55
2	A	1101	4AE	OAE-SBE-CAY	-4.11	102.87	107.95
2	B	1104	4AE	OAE-SBE-CAY	-2.59	104.75	107.95
2	B	1104	4AE	OAF-SBE-NAR	2.13	112.18	106.74
2	A	1101	4AE	OAE-SBE-NAR	2.40	112.86	106.74
2	A	1101	4AE	CAY-SBE-NAR	5.04	113.31	106.83
2	B	1104	4AE	CAY-SBE-NAR	6.77	115.53	106.83

There are no chirality outliers.

There are no torsion outliers.

There are no ring outliers.

2 monomers are involved in 2 short contacts:

Mol	Chain	Res	Type	Clashes	Symm-Clashes
4	A	1104	GOL	1	0
2	B	1104	4AE	1	0

## 5.7 Other polymers ⓘ

There are no such residues in this entry.

## 5.8 Polymer linkage issues ⓘ

There are no chain breaks in this entry.

## 6 Fit of model and data [i](#)

### 6.1 Protein, DNA and RNA chains [i](#)

In the following table, the column labelled ‘#RSRZ > 2’ contains the number (and percentage) of RSRZ outliers, followed by percent RSRZ outliers for the chain as percentile scores relative to all X-ray entries and entries of similar resolution. The OWAB column contains the minimum, median, 95<sup>th</sup> percentile and maximum values of the occupancy-weighted average B-factor per residue. The column labelled ‘Q < 0.9’ lists the number of (and percentage) of residues with an average occupancy less than 0.9.

Mol	Chain	Analysed	<RSRZ>	#RSRZ>2	OWAB(Å <sup>2</sup> )	Q<0.9
1	A	180/184 (97%)	-0.25	3 (1%) 70 73	10, 20, 46, 73	0
1	B	178/184 (96%)	-0.11	5 (2%) 53 57	13, 24, 65, 97	1 (0%)
All	All	358/368 (97%)	-0.18	8 (2%) 62 65	10, 23, 57, 97	1 (0%)

All (8) RSRZ outliers are listed below:

Mol	Chain	Res	Type	RSRZ
1	B	824	PRO	5.9
1	B	885	PRO	4.7
1	A	955	ASP	4.4
1	A	823	SER	4.4
1	A	886	SER	4.1
1	B	828	TRP	2.3
1	B	955	ASP	2.2
1	B	956	TYR	2.1

### 6.2 Non-standard residues in protein, DNA, RNA chains [i](#)

There are no non-standard protein/DNA/RNA residues in this entry.

### 6.3 Carbohydrates [i](#)

There are no carbohydrates in this entry.

### 6.4 Ligands [i](#)

In the following table, the Atoms column lists the number of modelled atoms in the group and the number defined in the chemical component dictionary. LLDF column lists the quality of electron density of the group with respect to its neighbouring residues in protein, DNA or RNA chains.

The B-factors column lists the minimum, median, 95<sup>th</sup> percentile and maximum values of B factors of atoms in the group. The column labelled 'Q < 0.9' lists the number of atoms with occupancy less than 0.9.

Mol	Type	Chain	Res	Atoms	RSCC	RSR	LLDF	B-factors(Å <sup>2</sup> )	Q<0.9
4	GOL	A	1104	6/6	0.88	0.25	2.41	30,33,34,41	0
2	4AE	B	1104	31/31	0.90	0.17	1.72	24,29,49,54	0
2	4AE	A	1101	31/31	0.92	0.14	0.26	21,24,56,61	0
3	ZN	B	1101	1/1	1.00	0.06	-1.70	21,21,21,21	0
3	ZN	A	1102	1/1	1.00	0.06	-2.66	17,17,17,17	0
3	ZN	B	1102	1/1	1.00	0.04	-2.73	25,25,25,25	0
3	ZN	A	1103	1/1	0.99	0.06	-2.76	15,15,15,15	0
5	SO4	B	1103	5/5	0.88	0.26	-	38,39,40,40	5

## 6.5 Other polymers [i](#)

There are no such residues in this entry.