



Full wwPDB X-ray Structure Validation Report ⓘ

Feb 14, 2017 – 11:56 am GMT

PDB ID : 4YDQ
Title : Crystal Structure of Prolyl-tRNA Synthetase (PRS) from Plasmodium falciparum in complex with Halofuginone and AMPPNP
Authors : Jain, V.; Yogavel, M.; Sharma, A.
Deposited on : 2015-02-23
Resolution : 2.30 Å(reported)

This is a Full wwPDB X-ray Structure Validation Report for a publicly released PDB entry.

We welcome your comments at validation@mail.wwpdb.org

A user guide is available at

<http://wwpdb.org/validation/2016/XrayValidationReportHelp>

with specific help available everywhere you see the ⓘ symbol.

The following versions of software and data (see [references ⓘ](#)) were used in the production of this report:

MolProbity : 4.02b-467
Mogul : 1.7.2 (RC1), CSD as538be (2017)
Xtriage (Phenix) : 1.9-1692
EDS : trunk28620
Percentile statistics : 20161228.v01 (using entries in the PDB archive December 28th 2016)
Refmac : 5.8.0135
CCP4 : 6.5.0
Ideal geometry (proteins) : Engh & Huber (2001)
Ideal geometry (DNA, RNA) : Parkinson et al. (1996)
Validation Pipeline (wwPDB-VP) : recalc28949

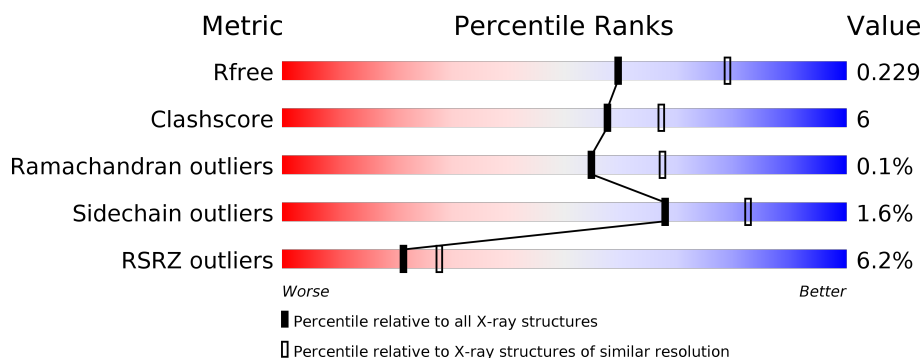
1 Overall quality at a glance

The following experimental techniques were used to determine the structure:

X-RAY DIFFRACTION

The reported resolution of this entry is 2.30 Å.

Percentile scores (ranging between 0-100) for global validation metrics of the entry are shown in the following graphic. The table shows the number of entries on which the scores are based.



Metric	Whole archive (#Entries)	Similar resolution (#Entries, resolution range(Å))
R_{free}	100719	4130 (2.30-2.30)
Clashscore	112137	4751 (2.30-2.30)
Ramachandran outliers	110173	4705 (2.30-2.30)
Sidechain outliers	110143	4704 (2.30-2.30)
RSRZ outliers	101464	4156 (2.30-2.30)

The table below summarises the geometric issues observed across the polymeric chains and their fit to the electron density. The red, orange, yellow and green segments on the lower bar indicate the fraction of residues that contain outliers for ≥ 3 , 2, 1 and 0 types of geometric quality criteria. A grey segment represents the fraction of residues that are not modelled. The numeric value for each fraction is indicated below the corresponding segment, with a dot representing fractions $\leq 5\%$. The upper red bar (where present) indicates the fraction of residues that have poor fit to the electron density. The numeric value is given above the bar.

Mol	Chain	Length	Quality of chain
1	A	497	<div> <div>5%</div> <div> <div></div> <div>87%</div> <div>10%</div> <div>••</div> </div> </div>
1	B	497	<div> <div>7%</div> <div> <div></div> <div>83%</div> <div>13%</div> <div>•</div> </div> </div>

2 Entry composition

There are 5 unique types of molecules in this entry. The entry contains 8230 atoms, of which 0 are hydrogens and 0 are deuteriums.

In the tables below, the ZeroOcc column contains the number of atoms modelled with zero occupancy, the AltConf column contains the number of residues with at least one atom in alternate conformation and the Trace column contains the number of residues modelled with at most 2 atoms.

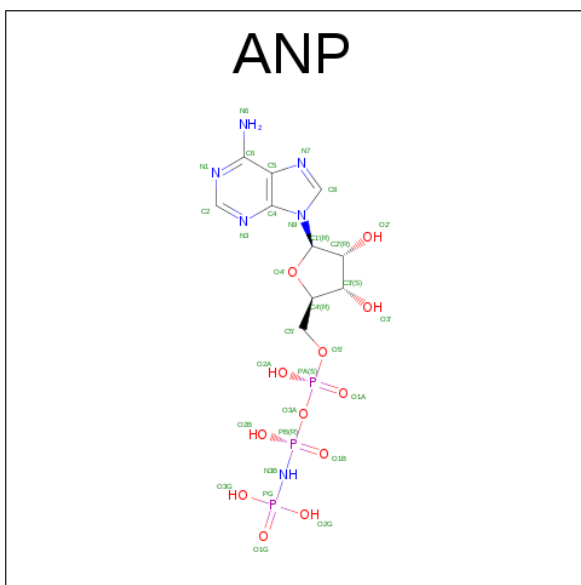
- Molecule 1 is a protein called Proline-tRNA ligase.

Mol	Chain	Residues	Atoms					ZeroOcc	AltConf	Trace
1	A	486	Total	C	N	O	S	0	6	0
			3942	2548	652	719	23			
1	B	478	Total	C	N	O	S	0	5	0
			3843	2486	634	700	23			

There are 8 discrepancies between the modelled and reference sequences:

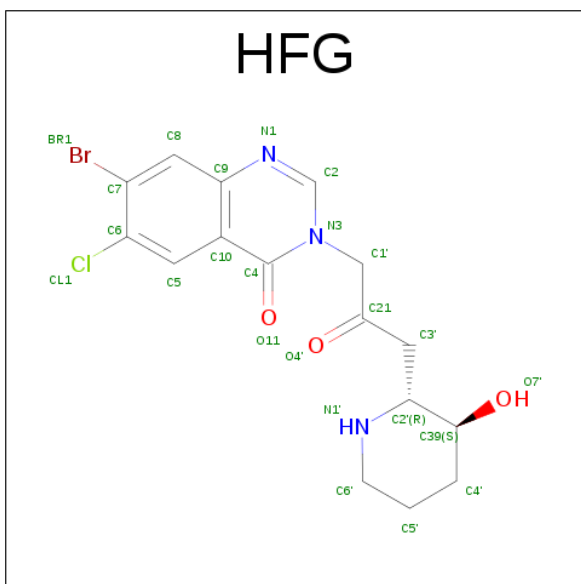
Chain	Residue	Modelled	Actual	Comment	Reference
A	250	GLY	-	expression tag	UNP Q8I5R7
A	251	ALA	-	expression tag	UNP Q8I5R7
A	252	MET	-	expression tag	UNP Q8I5R7
A	253	ALA	-	expression tag	UNP Q8I5R7
B	250	GLY	-	expression tag	UNP Q8I5R7
B	251	ALA	-	expression tag	UNP Q8I5R7
B	252	MET	-	expression tag	UNP Q8I5R7
B	253	ALA	-	expression tag	UNP Q8I5R7

- Molecule 2 is PHOSPHOAMINOPHOSPHONIC ACID-ADENYLATE ESTER (three-letter code: ANP) (formula: C₁₀H₁₇N₆O₁₂P₃).



Mol	Chain	Residues	Atoms					ZeroOcc	AltConf
2	A	1	Total	C	N	O	P	0	0
			31	10	6	12	3		
2	B	1	Total	C	N	O	P	0	0
			31	10	6	12	3		

- Molecule 3 is 7-bromo-6-chloro-3-{3-[(2R,3S)-3-hydroxypiperidin-2-yl]-2-oxopropyl}quinazolin-4(3H)-one (three-letter code: HFG) (formula: C₁₆H₁₇BrClN₃O₃).



Mol	Chain	Residues	Atoms						ZeroOcc	AltConf
3	A	1	Total	Br	C	Cl	N	O	0	0
			24	1	16	1	3	3		

Continued on next page...

Continued from previous page...

Mol	Chain	Residues	Atoms						ZeroOcc	AltConf
3	B	1	Total	Br	C	Cl	N	O	0	0
			24	1	16	1	3	3		

- Molecule 4 is MAGNESIUM ION (three-letter code: MG) (formula: Mg).

Mol	Chain	Residues	Atoms		ZeroOcc	AltConf
4	B	1	Total	Mg	0	0
			1	1		
4	A	1	Total	Mg	0	0
			1	1		

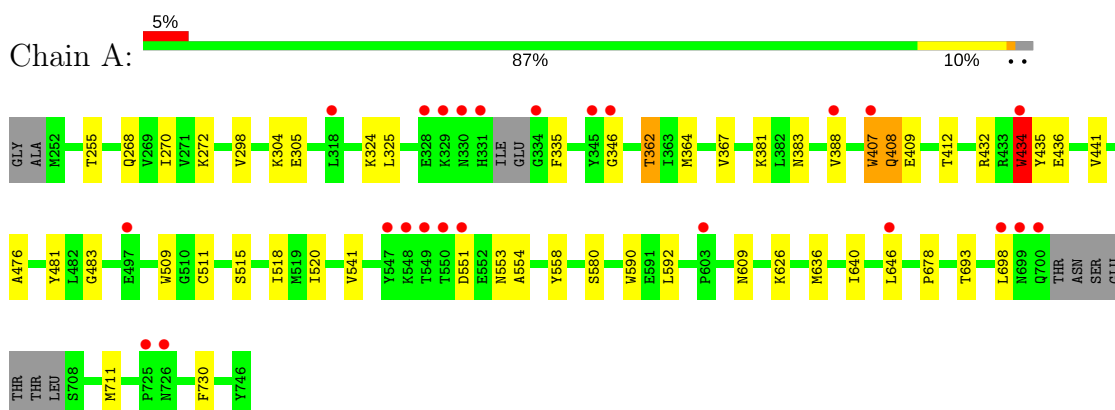
- Molecule 5 is water.

Mol	Chain	Residues	Atoms		ZeroOcc	AltConf
5	A	196	Total	O	0	0
			196	196		
5	B	137	Total	O	0	0
			137	137		

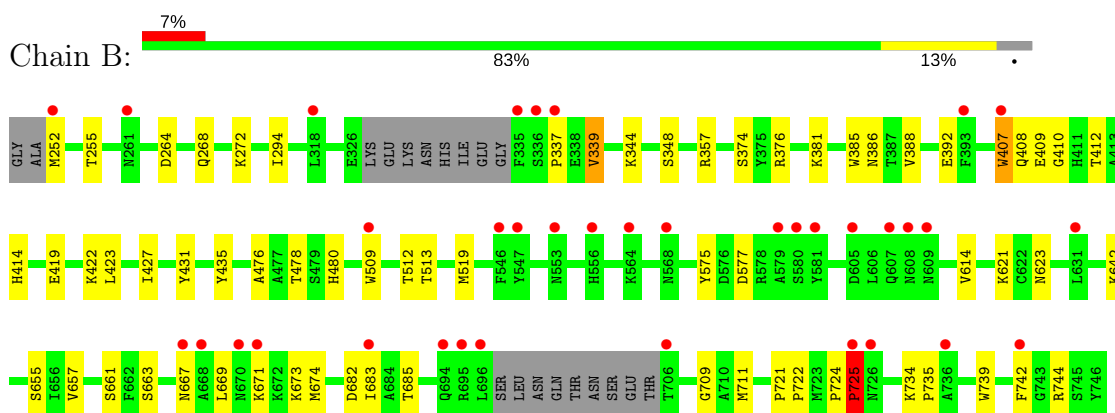
3 Residue-property plots [i](#)

These plots are drawn for all protein, RNA and DNA chains in the entry. The first graphic for a chain summarises the proportions of the various outlier classes displayed in the second graphic. The second graphic shows the sequence view annotated by issues in geometry and electron density. Residues are color-coded according to the number of geometric quality criteria for which they contain at least one outlier: green = 0, yellow = 1, orange = 2 and red = 3 or more. A red dot above a residue indicates a poor fit to the electron density ($RSRZ > 2$). Stretches of 2 or more consecutive residues without any outlier are shown as a green connector. Residues present in the sample, but not in the model, are shown in grey.

• Molecule 1: Proline-tRNA ligase



• Molecule 1: Proline-tRNA ligase



4 Data and refinement statistics

Property	Value	Source
Space group	P 1 21 1	Depositor
Cell constants a, b, c, α , β , γ	81.03Å 88.93Å 86.30Å 90.00° 96.71° 90.00°	Depositor
Resolution (Å)	27.82 – 2.30 27.82 – 2.30	Depositor EDS
% Data completeness (in resolution range)	99.2 (27.82-2.30) 99.4 (27.82-2.30)	Depositor EDS
R_{merge}	0.09	Depositor
R_{sym}	(Not available)	Depositor
$\langle I/\sigma(I) \rangle$ ¹	3.65 (at 2.29Å)	Xtriage
Refinement program	PHENIX	Depositor
R, R_{free}	0.184 , 0.232 0.182 , 0.229	Depositor DCC
R_{free} test set	2726 reflections (5.06%)	DCC
Wilson B-factor (Å ²)	36.3	Xtriage
Anisotropy	0.399	Xtriage
Bulk solvent k_{sol} (e/Å ³), B_{sol} (Å ²)	0.32 , 44.9	EDS
L-test for twinning ²	$\langle L \rangle = 0.49$, $\langle L^2 \rangle = 0.33$	Xtriage
Estimated twinning fraction	No twinning to report.	Xtriage
F_o, F_c correlation	0.95	EDS
Total number of atoms	8230	wwPDB-VP
Average B, all atoms (Å ²)	44.0	wwPDB-VP

Xtriage's analysis on translational NCS is as follows: *The largest off-origin peak in the Patterson function is 4.68% of the height of the origin peak. No significant pseudotranslation is detected.*

¹Intensities estimated from amplitudes.

²Theoretical values of $\langle |L| \rangle$, $\langle L^2 \rangle$ for acentric reflections are 0.5, 0.333 respectively for untwinned datasets, and 0.375, 0.2 for perfectly twinned datasets.

5 Model quality [i](#)

5.1 Standard geometry [i](#)

Bond lengths and bond angles in the following residue types are not validated in this section: MG, ANP, HFG

The Z score for a bond length (or angle) is the number of standard deviations the observed value is removed from the expected value. A bond length (or angle) with $|Z| > 5$ is considered an outlier worth inspection. RMSZ is the root-mean-square of all Z scores of the bond lengths (or angles).

Mol	Chain	Bond lengths		Bond angles	
		RMSZ	$\# Z > 5$	RMSZ	$\# Z > 5$
1	A	0.55	1/4060 (0.0%)	0.62	1/5505 (0.0%)
1	B	0.47	1/3956 (0.0%)	0.60	0/5368
All	All	0.51	2/8016 (0.0%)	0.61	1/10873 (0.0%)

All (2) bond length outliers are listed below:

Mol	Chain	Res	Type	Atoms	Z	Observed(Å)	Ideal(Å)
1	A	407	TRP	CB-CG	-7.19	1.37	1.50
1	B	407	TRP	CB-CG	-6.18	1.39	1.50

All (1) bond angle outliers are listed below:

Mol	Chain	Res	Type	Atoms	Z	Observed(°)	Ideal(°)
1	A	434	TRP	CB-CA-C	5.71	121.82	110.40

There are no chirality outliers.

There are no planarity outliers.

5.2 Too-close contacts [i](#)

In the following table, the Non-H and H(model) columns list the number of non-hydrogen atoms and hydrogen atoms in the chain respectively. The H(added) column lists the number of hydrogen atoms added and optimized by MolProbity. The Clashes column lists the number of clashes within the asymmetric unit, whereas Symm-Clashes lists symmetry related clashes.

Mol	Chain	Non-H	H(model)	H(added)	Clashes	Symm-Clashes
1	A	3942	0	3868	45	0
1	B	3843	0	3742	44	0
2	A	31	0	13	0	0

Continued on next page...

Continued from previous page...

Mol	Chain	Non-H	H(model)	H(added)	Clashes	Symm-Clashes
2	B	31	0	13	0	0
3	A	24	0	17	2	0
3	B	24	0	17	1	0
4	A	1	0	0	0	0
4	B	1	0	0	0	0
5	A	196	0	0	1	0
5	B	137	0	0	3	0
All	All	8230	0	7670	87	0

The all-atom clashscore is defined as the number of clashes found per 1000 atoms (including hydrogen atoms). The all-atom clashscore for this structure is 6.

All (87) close contacts within the same asymmetric unit are listed below, sorted by their clash magnitude.

Atom-1	Atom-2	Interatomic distance (Å)	Clash overlap (Å)
1:A:407:TRP:CZ3	1:A:409:GLU:HB3	2.06	0.90
1:A:434:TRP:HH2	1:A:515:SER:HB3	1.36	0.89
1:B:407:TRP:CZ3	1:B:409:GLU:HB3	2.09	0.87
1:A:434:TRP:CH2	1:A:515:SER:HB3	2.12	0.82
1:A:298:VAL:HB	1:A:434:TRP:CD1	2.15	0.82
1:A:324:LYS:HG2	1:A:362[A]:THR:HG23	1.63	0.81
1:A:435:TYR:CE2	1:A:476:ALA:HB1	2.18	0.78
1:A:434:TRP:HZ3	1:A:435:TYR:CE2	2.03	0.77
1:B:422:LYS:NZ	5:B:1025:HOH:O	2.24	0.70
1:B:264:ASP:OD2	1:B:268:GLN:NE2	2.26	0.67
1:A:298:VAL:HB	1:A:434:TRP:NE1	2.08	0.67
1:B:431:TYR:HH	1:B:509:TRP:HD1	1.42	0.67
1:A:407:TRP:N	1:A:407:TRP:CD1	2.64	0.65
1:B:657:VAL:HG23	1:B:673:LYS:HG2	1.80	0.64
1:A:434:TRP:CH2	1:A:515:SER:CB	2.82	0.63
1:A:693:THR:HG21	1:A:711:MET:HG2	1.80	0.62
1:A:434:TRP:HZ3	1:A:435:TYR:CD2	2.18	0.62
1:B:392:GLU:OE1	5:B:1034:HOH:O	2.16	0.60
1:A:551:ASP:OD1	1:A:553:ASN:N	2.36	0.59
1:A:325:LEU:HA	1:A:362[A]:THR:HG21	1.84	0.58
1:A:346:GLY:HA3	1:B:337:PRO:HA	1.85	0.58
1:A:383:ASN:OD1	1:A:408:GLN:HG2	2.03	0.58
1:B:407:TRP:N	1:B:407:TRP:CD1	2.72	0.58
1:A:435:TYR:CZ	1:A:476:ALA:HB1	2.40	0.57
1:A:580:SER:OG	1:B:376:ARG:NH1	2.38	0.57
1:A:551:ASP:OD1	1:A:554:ALA:N	2.36	0.56

Continued on next page...

Continued from previous page...

Atom-1	Atom-2	Interatomic distance (Å)	Clash overlap (Å)
1:B:388:VAL:HG13	1:B:407:TRP:HE1	1.70	0.56
1:B:357:ARG:HG3	1:B:388:VAL:HG12	1.88	0.55
1:B:410:GLY:HA3	1:B:509:TRP:CE2	2.42	0.55
1:B:709:GLY:O	1:B:744:ARG:NE	2.33	0.55
1:B:339:VAL:HG23	3:B:802:HFG:BR1	2.62	0.54
1:A:388:VAL:HG22	1:A:407:TRP:NE1	2.23	0.53
1:A:434:TRP:CH2	1:A:511:CYS:SG	3.01	0.53
1:B:734:LYS:HG2	1:B:735:PRO:HD2	1.91	0.52
1:A:678:PRO:O	1:A:730:PHE:HD2	1.93	0.52
1:A:407:TRP:CH2	1:A:409:GLU:HB3	2.45	0.51
1:B:407:TRP:HZ3	1:B:409:GLU:HB3	1.73	0.51
1:B:614:VAL:HG22	1:B:621:LYS:HG2	1.91	0.51
1:B:575:TYR:CZ	1:B:577:ASP:HB3	2.46	0.51
1:B:252[A]:MET:HG2	1:B:272:LYS:HE2	1.93	0.51
1:A:255:THR:HB	1:A:268:GLN:HE22	1.75	0.51
1:B:381:LYS:HA	1:B:412:THR:HG22	1.93	0.51
1:A:324:LYS:HG2	1:A:362[A]:THR:CG2	2.39	0.50
1:B:407:TRP:CH2	1:B:409:GLU:HB3	2.44	0.50
1:B:407:TRP:HB3	1:B:512:THR:HG22	1.93	0.50
1:B:423:LEU:HD21	1:B:509:TRP:CZ3	2.46	0.50
1:A:558:TYR:CE1	1:A:626:LYS:HD2	2.50	0.47
1:B:431:TYR:OH	1:B:509:TRP:HD1	1.96	0.47
1:B:412:THR:HG23	1:B:509:TRP:CH2	2.50	0.47
1:A:388:VAL:HG11	1:A:407:TRP:HZ2	1.80	0.46
1:A:434:TRP:CZ3	1:A:435:TYR:CE2	2.94	0.46
1:A:432:ARG:NH1	1:A:436:GLU:OE1	2.43	0.45
1:B:674:MET:HB2	1:B:742:PHE:O	2.15	0.45
1:B:667:ASN:O	1:B:671:LYS:HG3	2.16	0.45
1:B:427:ILE:HG21	1:B:509:TRP:CG	2.52	0.45
1:B:385:TRP:CE3	1:B:408:GLN:HB3	2.51	0.45
1:B:294:ILE:HD13	1:B:519:MET:CE	2.47	0.45
1:B:721:PRO:HG2	1:B:739:TRP:CD1	2.52	0.44
1:A:434:TRP:CZ3	1:A:435:TYR:CD2	3.02	0.44
1:A:636:MET:O	1:A:640:ILE:HG13	2.17	0.44
1:B:661:SER:OG	1:B:663:SER:OG	2.18	0.44
1:A:335:PHE:HB3	3:A:802:HFG:C7	2.47	0.44
1:B:414:HIS:HD1	1:B:419:GLU:HG2	1.82	0.44
1:B:682:ASP:HB2	1:B:685:THR:HG23	1.99	0.44
1:A:362[A]:THR:HB	5:A:937:HOH:O	2.17	0.44
1:A:381:LYS:HA	1:A:412:THR:HG22	1.99	0.44
1:A:541:VAL:HG21	1:A:590:TRP:CD1	2.52	0.43

Continued on next page...

Continued from previous page...

Atom-1	Atom-2	Interatomic distance (Å)	Clash overlap (Å)
1:B:722:PRO:O	1:B:724:PRO:HD3	2.19	0.43
1:B:435:TYR:CZ	1:B:476:ALA:HB1	2.54	0.43
1:A:435:TYR:HB3	1:A:441:VAL:O	2.19	0.43
1:B:669:LEU:HD11	1:B:711:MET:HB3	2.00	0.43
1:A:434:TRP:CZ2	1:A:515:SER:CB	3.01	0.43
1:A:270:ILE:HG22	1:A:520:ILE:HD13	2.01	0.42
1:A:407:TRP:HZ3	3:A:802:HFG:H8	1.84	0.42
1:A:481:TYR:CZ	1:A:483:GLY:HA2	2.53	0.42
1:A:272:LYS:HB3	1:A:592:LEU:HD21	2.01	0.42
1:B:724:PRO:HA	1:B:725:PRO:HD3	1.88	0.42
1:B:655:SER:O	1:B:673:LYS:HG3	2.20	0.42
1:B:357:ARG:NH2	1:B:386:ASN:HB2	2.34	0.42
1:B:478[B]:THR:HG21	1:B:480:HIS:CE1	2.54	0.42
1:B:344:LYS:HB3	1:B:344:LYS:HE2	1.93	0.41
1:A:364:MET:O	1:A:367[B]:VAL:HG22	2.20	0.41
1:B:642:LYS:HB2	1:B:642:LYS:HE3	1.92	0.41
1:A:304:LYS:HE3	1:A:305:GLU:OE2	2.21	0.41
1:A:435:TYR:OH	1:A:518:ILE:HD12	2.20	0.41
1:A:646:LEU:HA	1:A:646:LEU:HD23	1.93	0.40
1:B:623:ASN:ND2	5:B:983:HOH:O	2.54	0.40

There are no symmetry-related clashes.

5.3 Torsion angles ⓘ

5.3.1 Protein backbone ⓘ

In the following table, the Percentiles column shows the percent Ramachandran outliers of the chain as a percentile score with respect to all X-ray entries followed by that with respect to entries of similar resolution.

The Analysed column shows the number of residues for which the backbone conformation was analysed, and the total number of residues.

Mol	Chain	Analysed	Favoured	Allowed	Outliers	Percentiles	
1	A	486/497 (98%)	475 (98%)	11 (2%)	0	100	100
1	B	476/497 (96%)	461 (97%)	14 (3%)	1 (0%)	51	63
All	All	962/994 (97%)	936 (97%)	25 (3%)	1 (0%)	55	67

All (1) Ramachandran outliers are listed below:

Mol	Chain	Res	Type
1	B	725	PRO

5.3.2 Protein sidechains [i](#)

In the following table, the Percentiles column shows the percent sidechain outliers of the chain as a percentile score with respect to all X-ray entries followed by that with respect to entries of similar resolution.

The Analysed column shows the number of residues for which the sidechain conformation was analysed, and the total number of residues.

Mol	Chain	Analysed	Rotameric	Outliers	Percentiles	
1	A	426/450 (95%)	419 (98%)	7 (2%)	68	82
1	B	410/450 (91%)	403 (98%)	7 (2%)	66	81
All	All	836/900 (93%)	822 (98%)	14 (2%)	68	81

All (14) residues with a non-rotameric sidechain are listed below:

Mol	Chain	Res	Type
1	A	362[A]	THR
1	A	362[B]	THR
1	A	408	GLN
1	A	434	TRP
1	A	509	TRP
1	A	609	ASN
1	A	698	LEU
1	B	255	THR
1	B	339	VAL
1	B	348	SER
1	B	374	SER
1	B	513	THR
1	B	683	ILE
1	B	725	PRO

Some sidechains can be flipped to improve hydrogen bonding and reduce clashes. All (1) such sidechains are listed below:

Mol	Chain	Res	Type
1	A	408	GLN

5.3.3 RNA ⓘ

There are no RNA molecules in this entry.

5.4 Non-standard residues in protein, DNA, RNA chains ⓘ

There are no non-standard protein/DNA/RNA residues in this entry.

5.5 Carbohydrates ⓘ

There are no carbohydrates in this entry.

5.6 Ligand geometry ⓘ

Of 6 ligands modelled in this entry, 2 are monoatomic - leaving 4 for Mogul analysis.

In the following table, the Counts columns list the number of bonds (or angles) for which Mogul statistics could be retrieved, the number of bonds (or angles) that are observed in the model and the number of bonds (or angles) that are defined in the chemical component dictionary. The Link column lists molecule types, if any, to which the group is linked. The Z score for a bond length (or angle) is the number of standard deviations the observed value is removed from the expected value. A bond length (or angle) with $|Z| > 2$ is considered an outlier worth inspection. RMSZ is the root-mean-square of all Z scores of the bond lengths (or angles).

Mol	Type	Chain	Res	Link	Bond lengths			Bond angles		
					Counts	RMSZ	$\# Z > 2$	Counts	RMSZ	$\# Z > 2$
2	ANP	A	801	4	29,33,33	2.31	5 (17%)	28,52,52	1.19	3 (10%)
3	HFG	A	802	-	26,26,26	3.04	14 (53%)	28,37,37	2.11	8 (28%)
2	ANP	B	801	4	29,33,33	1.44	5 (17%)	28,52,52	1.14	2 (7%)
3	HFG	B	802	-	26,26,26	2.97	13 (50%)	28,37,37	2.47	7 (25%)

In the following table, the Chirals column lists the number of chiral outliers, the number of chiral centers analysed, the number of these observed in the model and the number defined in the chemical component dictionary. Similar counts are reported in the Torsion and Rings columns. '-' means no outliers of that kind were identified.

Mol	Type	Chain	Res	Link	Chirals	Torsions	Rings
2	ANP	A	801	4	-	0/13/38/38	0/3/3/3
3	HFG	A	802	-	-	0/8/19/19	0/3/3/3
2	ANP	B	801	4	-	0/13/38/38	0/3/3/3
3	HFG	B	802	-	-	0/8/19/19	0/3/3/3

All (37) bond length outliers are listed below:

Mol	Chain	Res	Type	Atoms	Z	Observed(Å)	Ideal(Å)
3	A	802	HFG	C1'-N3	-5.46	1.41	1.47
3	B	802	HFG	C1'-N3	-4.82	1.42	1.47
3	B	802	HFG	C8-C9	-4.50	1.35	1.41
3	A	802	HFG	C8-C9	-3.52	1.36	1.41
3	B	802	HFG	C39-C2'	-3.24	1.49	1.52
2	B	801	ANP	PB-O3A	-3.04	1.55	1.59
3	B	802	HFG	C10-C9	-2.92	1.35	1.41
2	A	801	ANP	PB-O3A	-2.90	1.55	1.59
3	A	802	HFG	C39-C2'	-2.82	1.49	1.52
3	A	802	HFG	C10-C9	-2.66	1.35	1.41
3	B	802	HFG	C5'-C4'	-2.36	1.46	1.53
2	B	801	ANP	C8-N7	-2.22	1.30	1.34
3	A	802	HFG	C5'-C4'	-2.16	1.47	1.53
2	A	801	ANP	PG-O2G	-2.15	1.50	1.56
3	A	802	HFG	C1'-C21	2.05	1.53	1.51
3	A	802	HFG	C2-N3	2.36	1.40	1.35
3	B	802	HFG	C6-CL1	2.52	1.79	1.73
2	B	801	ANP	PG-N3B	2.57	1.70	1.63
3	B	802	HFG	C8-C7	2.59	1.41	1.36
3	B	802	HFG	C4-C10	2.62	1.45	1.41
3	B	802	HFG	C2-N3	2.62	1.41	1.35
3	A	802	HFG	C8-C7	2.62	1.41	1.36
3	A	802	HFG	C6-CL1	2.63	1.79	1.73
2	A	801	ANP	PG-N3B	2.73	1.70	1.63
3	A	802	HFG	C4-C10	3.03	1.46	1.41
2	A	801	ANP	PB-O1B	3.29	1.49	1.46
2	B	801	ANP	PB-O1B	3.49	1.50	1.46
2	B	801	ANP	PG-O1G	3.91	1.50	1.46
3	B	802	HFG	C4-N3	4.07	1.44	1.38
3	A	802	HFG	C4-N3	4.30	1.44	1.38
3	B	802	HFG	O4'-C21	4.54	1.29	1.21
3	A	802	HFG	O4'-C21	4.72	1.30	1.21
3	B	802	HFG	C2-N1	5.58	1.40	1.30
3	A	802	HFG	C2-N1	5.69	1.40	1.30
3	B	802	HFG	C9-N1	7.15	1.50	1.37
3	A	802	HFG	C9-N1	7.50	1.50	1.37
2	A	801	ANP	PG-O1G	10.61	1.58	1.46

All (20) bond angle outliers are listed below:

Mol	Chain	Res	Type	Atoms	Z	Observed(°)	Ideal(°)
3	B	802	HFG	C4'-C39-C2'	-6.53	107.04	110.76

Continued on next page...

Continued from previous page...

Mol	Chain	Res	Type	Atoms	Z	Observed(°)	Ideal(°)
3	B	802	HFG	C7-C6-CL1	-4.65	116.17	120.98
3	A	802	HFG	C4'-C39-C2'	-4.14	108.40	110.76
3	A	802	HFG	C7-C6-CL1	-3.74	117.11	120.98
3	A	802	HFG	C21-C1'-N3	-3.22	107.95	111.06
2	B	801	ANP	O1G-PG-N3B	-2.99	107.32	111.79
2	A	801	ANP	O5'-C5'-C4'	-2.78	99.14	109.00
2	B	801	ANP	O1B-PB-N3B	-2.73	107.71	111.79
2	A	801	ANP	O2B-PB-O1B	-2.04	105.62	109.87
2	A	801	ANP	C4-C5-N7	2.04	111.38	109.41
3	B	802	HFG	C1'-N3-C4	2.07	120.29	117.79
3	A	802	HFG	C1'-N3-C4	2.08	120.31	117.79
3	A	802	HFG	BR1-C7-C6	2.33	124.16	121.53
3	B	802	HFG	C5-C10-C9	2.76	121.40	118.16
3	A	802	HFG	C5-C6-CL1	3.24	122.28	119.15
3	A	802	HFG	C2-N1-C9	4.08	120.06	116.63
3	B	802	HFG	C2-N1-C9	4.10	120.07	116.63
3	B	802	HFG	C5-C6-CL1	4.46	123.46	119.15
3	A	802	HFG	C10-C4-N3	5.44	119.86	116.15
3	B	802	HFG	C10-C4-N3	6.06	120.29	116.15

There are no chirality outliers.

There are no torsion outliers.

There are no ring outliers.

2 monomers are involved in 3 short contacts:

Mol	Chain	Res	Type	Clashes	Symm-Clashes
3	A	802	HFG	2	0
3	B	802	HFG	1	0

5.7 Other polymers [i](#)

There are no such residues in this entry.

5.8 Polymer linkage issues [i](#)

There are no chain breaks in this entry.

6 Fit of model and data

6.1 Protein, DNA and RNA chains

In the following table, the column labelled ‘#RSRZ > 2’ contains the number (and percentage) of RSRZ outliers, followed by percent RSRZ outliers for the chain as percentile scores relative to all X-ray entries and entries of similar resolution. The OWAB column contains the minimum, median, 95th percentile and maximum values of the occupancy-weighted average B-factor per residue. The column labelled ‘Q < 0.9’ lists the number of (and percentage) of residues with an average occupancy less than 0.9.

Mol	Chain	Analysed	<RSRZ>	#RSRZ>2	OWAB(Å ²)	Q<0.9
1	A	486/497 (97%)	0.06	24 (4%) 30 37	24, 37, 63, 125	0
1	B	478/497 (96%)	0.38	36 (7%) 15 20	26, 45, 83, 110	0
All	All	964/994 (96%)	0.22	60 (6%) 21 28	24, 41, 80, 125	0

All (60) RSRZ outliers are listed below:

Mol	Chain	Res	Type	RSRZ
1	B	335	PHE	9.1
1	A	547	TYR	6.4
1	B	546	PHE	6.3
1	B	581	TYR	5.4
1	A	434	TRP	5.3
1	B	706	THR	4.9
1	A	549	THR	4.7
1	A	550	THR	4.5
1	A	330	ASN	4.4
1	B	393	PHE	4.2
1	A	407	TRP	4.1
1	B	252[A]	MET	4.0
1	B	407	TRP	4.0
1	A	331	HIS	3.8
1	B	631	LEU	3.8
1	B	608	ASN	3.7
1	A	725	PRO	3.6
1	B	336	SER	3.5
1	A	345	TYR	3.5
1	B	337	PRO	3.5
1	B	736	ALA	3.4
1	B	547	TYR	3.4
1	A	698	LEU	3.4
1	B	568	ASN	3.2

Continued on next page...

Continued from previous page...

Mol	Chain	Res	Type	RSRZ
1	B	579	ALA	3.1
1	B	607	GLN	3.1
1	B	318	LEU	3.1
1	A	551	ASP	3.0
1	B	696	LEU	3.0
1	A	700	GLN	2.9
1	B	683	ILE	2.9
1	B	556	HIS	2.8
1	A	726	ASN	2.8
1	B	742	PHE	2.7
1	B	670	ASN	2.6
1	B	580	SER	2.6
1	B	694	GLN	2.6
1	A	497	GLU	2.6
1	A	699	ASN	2.6
1	B	667	ASN	2.5
1	B	509	TRP	2.5
1	B	726	ASN	2.4
1	A	388	VAL	2.4
1	B	564	LYS	2.4
1	B	668	ALA	2.4
1	B	605	ASP	2.3
1	B	671	LYS	2.3
1	B	725	PRO	2.3
1	B	695	ARG	2.3
1	A	329	LYS	2.3
1	A	318	LEU	2.2
1	A	548	LYS	2.2
1	B	609	ASN	2.2
1	B	261	ASN	2.1
1	B	553	ASN	2.1
1	A	646	LEU	2.1
1	A	334	GLY	2.1
1	A	346	GLY	2.1
1	A	328	GLU	2.0
1	A	603	PRO	2.0

6.2 Non-standard residues in protein, DNA, RNA chains ⓘ

There are no non-standard protein/DNA/RNA residues in this entry.

6.3 Carbohydrates [i](#)

There are no carbohydrates in this entry.

6.4 Ligands [i](#)

In the following table, the Atoms column lists the number of modelled atoms in the group and the number defined in the chemical component dictionary. LLDF column lists the quality of electron density of the group with respect to its neighbouring residues in protein, DNA or RNA chains. The B-factors column lists the minimum, median, 95th percentile and maximum values of B factors of atoms in the group. The column labelled 'Q < 0.9' lists the number of atoms with occupancy less than 0.9.

Mol	Type	Chain	Res	Atoms	RSCC	RSR	LLDF	B-factors(\AA^2)	Q<0.9
2	ANP	B	801	31/31	0.93	0.16	-0.04	31,39,70,76	0
3	HFG	B	802	24/24	0.88	0.18	-0.08	24,34,43,77	24
3	HFG	A	802	24/24	0.96	0.17	-0.17	22,29,38,53	0
2	ANP	A	801	31/31	0.96	0.13	-0.80	26,32,48,113	0
4	MG	A	803	1/1	0.93	0.05	-1.99	45,45,45,45	0
4	MG	B	803	1/1	0.95	0.09	-	56,56,56,56	0

6.5 Other polymers [i](#)

There are no such residues in this entry.