



# wwPDB X-ray Structure Validation Summary Report ⓘ

Feb 14, 2017 – 05:08 pm GMT

PDB ID : 2YEQ  
Title : Structure of PhoD  
Authors : Lillington, J.E.D.; Rodriguez, F.; Roversi, P.; Johnson, S.J.; Berks, B.; Lea, S.M.  
Deposited on : 2011-03-30  
Resolution : 1.93 Å(reported)

This is a wwPDB X-ray Structure Validation Summary Report for a publicly released PDB entry.

We welcome your comments at [validation@mail.wwpdb.org](mailto:validation@mail.wwpdb.org)

A user guide is available at

<http://wwpdb.org/validation/2016/XrayValidationReportHelp>

with specific help available everywhere you see the ⓘ symbol.

---

The following versions of software and data (see [references ⓘ](#)) were used in the production of this report:

MolProbity : 4.02b-467  
Mogul : 1.7.2 (RC1), CSD as538be (2017)  
Xtriage (Phenix) : 1.9-1692  
EDS : trunk28620  
Percentile statistics : 20161228.v01 (using entries in the PDB archive December 28th 2016)  
Refmac : 5.8.0135  
CCP4 : 6.5.0  
Ideal geometry (proteins) : Engh & Huber (2001)  
Ideal geometry (DNA, RNA) : Parkinson et al. (1996)  
Validation Pipeline (wwPDB-VP) : recalc28949

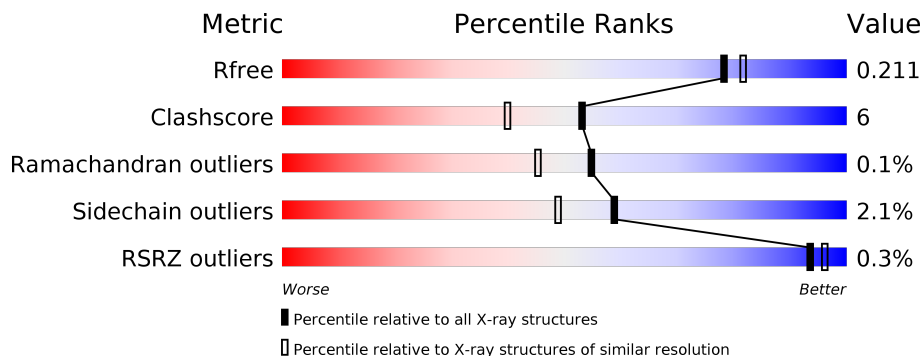
# 1 Overall quality at a glance

The following experimental techniques were used to determine the structure:

*X-RAY DIFFRACTION*



The reported resolution of this entry is 1.93 Å.

Percentile scores (ranging between 0-100) for global validation metrics of the entry are shown in the following graphic. The table shows the number of entries on which the scores are based.



Metric	Whole archive (#Entries)	Similar resolution (#Entries, resolution range(Å))
$R_{free}$	100719	3233 (1.96-1.92)
Clashscore	112137	3430 (1.96-1.92)
Ramachandran outliers	110173	3395 (1.96-1.92)
Sidechain outliers	110143	3395 (1.96-1.92)
RSRZ outliers	101464	3250 (1.96-1.92)

The table below summarises the geometric issues observed across the polymeric chains and their fit to the electron density. The red, orange, yellow and green segments on the lower bar indicate the fraction of residues that contain outliers for  $\geq 3$ , 2, 1 and 0 types of geometric quality criteria. A grey segment represents the fraction of residues that are not modelled. The numeric value for each fraction is indicated below the corresponding segment, with a dot representing fractions  $\leq 5\%$ . The upper red bar (where present) indicates the fraction of residues that have poor fit to the electron density. The numeric value is given above the bar.

Mol	Chain	Length	Quality of chain
1	A	527	 89% 10% .
1	B	527	 89% 10% .

The following table lists non-polymeric compounds, carbohydrate monomers and non-standard residues in protein, DNA, RNA chains that are outliers for geometric or electron-density-fit criteria:

Mol	Type	Chain	Res	Chirality	Geometry	Clashes	Electron density
2	PE5	A	546	-	-	-	X
2	PE5	A	554	-	-	-	X
2	PE5	A	557	-	-	-	X
2	PE5	A	575	-	-	-	X
2	PE5	B	530	-	-	-	X
2	PE5	B	531	-	-	-	X
2	PE5	B	534	-	-	-	X
2	PE5	B	536	-	-	-	X
2	PE5	B	538	-	-	-	X
2	PE5	B	546	-	-	-	X
2	PE5	B	554	-	-	-	X
2	PE5	B	557	-	-	-	X
2	PE5	B	558	-	-	-	X
2	PE5	B	581	-	-	-	X
3	EDO	A	532	-	-	-	X
3	EDO	A	535[A]	-	-	-	X
3	EDO	A	535[B]	-	-	-	X
3	EDO	A	539	-	-	X	X
3	EDO	A	540	-	-	-	X
3	EDO	A	541	-	-	-	X
3	EDO	A	548	-	-	-	X
3	EDO	A	552	-	-	-	X
3	EDO	A	561	-	-	-	X
3	EDO	A	565	-	-	-	X
3	EDO	A	566	-	-	X	-
3	EDO	A	569	-	-	X	-
3	EDO	A	576	-	-	-	X
3	EDO	A	579	-	-	X	X
3	EDO	B	535	-	-	-	X
3	EDO	B	541	-	-	-	X
3	EDO	B	548	-	-	-	X
3	EDO	B	549	-	-	-	X
3	EDO	B	552	-	-	-	X
3	EDO	B	561	-	-	-	X
3	EDO	B	562	-	-	-	X
3	EDO	B	565	-	-	-	X
3	EDO	B	569	-	-	-	X
3	EDO	B	573	-	-	-	X
3	EDO	B	576	-	-	-	X
4	NA	A	577	-	-	-	X
5	FE	A	1524	-	-	-	X
6	CA	A	1525	-	-	-	X
6	CA	A	1526	-	-	-	X

2 Entry composition ⓘ

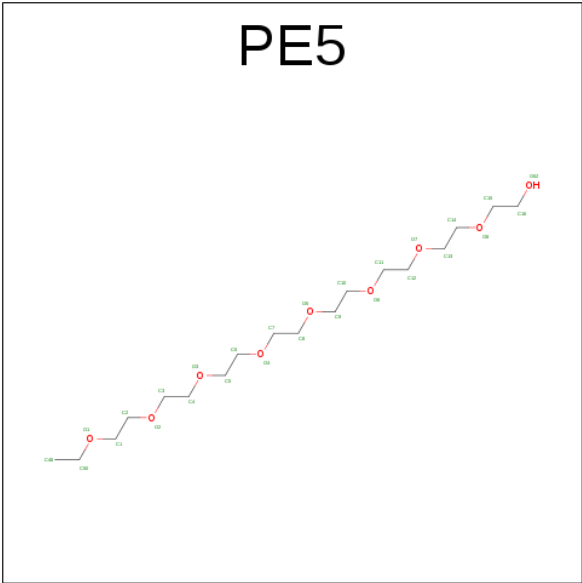
There are 8 unique types of molecules in this entry. The entry contains 9447 atoms, of which 0 are hydrogens and 0 are deuteriums.

In the tables below, the ZeroOcc column contains the number of atoms modelled with zero occupancy, the AltConf column contains the number of residues with at least one atom in alternate conformation and the Trace column contains the number of residues modelled with at most 2 atoms.

- Molecule 1 is a protein called ALKALINE PHOSPHATASE D.

Mol	Chain	Residues	Atoms					ZeroOcc	AltConf	Trace
1	A	522	Total	C	N	O	S	0	0	0
			4187	2649	741	786	11			
1	B	522	Total	C	N	O	S	0	1	0
			4193	2653	742	787	11			

- Molecule 2 is 3,6,9,12,15,18,21,24-OCTAOXAHEXACOSAN-1-OL (three-letter code: PE5) (formula: C<sub>18</sub>H<sub>38</sub>O<sub>9</sub>).



Mol	Chain	Residues	Atoms			ZeroOcc	AltConf
2	A	1	Total	C	O	0	0
			13	8	5		
2	A	1	Total	C	O	0	0
			7	5	2		
2	A	1	Total	C	O	0	0
			6	4	2		
2	A	1	Total	C	O	0	0
			16	11	5		

Continued on next page...

*Continued from previous page...*

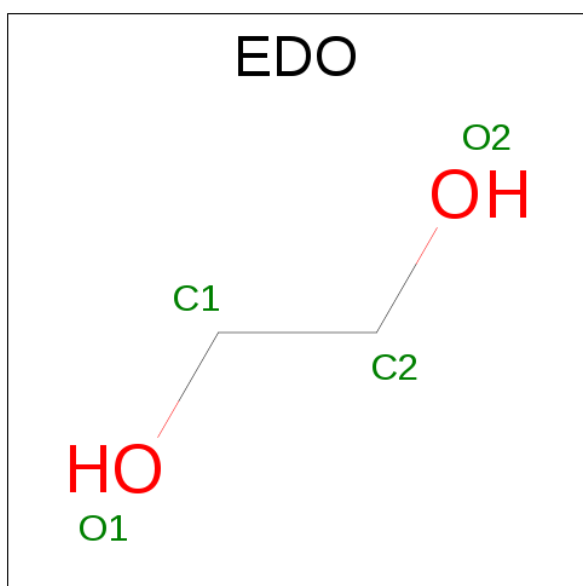
Mol	Chain	Residues	Atoms			ZeroOcc	AltConf
2	A	1	Total	C	O	0	0
			6	4	2		
2	A	1	Total	C	O	0	0
			8	5	3		
2	A	1	Total	C	O	0	0
			7	5	2		
2	A	1	Total	C	O	0	0
			4	3	1		
2	A	1	Total	C	O	0	0
			6	4	2		
2	A	1	Total	C	O	0	0
			7	5	2		
2	A	1	Total	C	O	0	0
			7	5	2		
2	A	1	Total	C	O	0	0
			12	8	4		
2	A	1	Total	C	O	0	0
			7	5	2		
2	A	1	Total	C	O	0	0
			7	5	2		
2	B	1	Total	C	O	0	0
			13	8	5		
2	B	1	Total	C	O	0	0
			7	5	2		
2	B	1	Total	C	O	0	0
			6	4	2		
2	B	1	Total	C	O	0	0
			16	11	5		
2	B	1	Total	C	O	0	0
			6	4	2		
2	B	1	Total	C	O	0	0
			15	10	5		
2	B	1	Total	C	O	0	0
			8	5	3		
2	B	1	Total	C	O	0	0
			7	5	2		
2	B	1	Total	C	O	0	0
			4	3	1		
2	B	1	Total	C	O	0	0
			6	4	2		
2	B	1	Total	C	O	0	0
			7	5	2		

*Continued on next page...*

Continued from previous page...

Mol	Chain	Residues	Atoms			ZeroOcc	AltConf
2	B	1	Total	C	O	0	0
			7	5	2		
2	B	1	Total	C	O	0	0
			7	5	2		
2	B	1	Total	C	O	0	0
			8	5	3		
2	B	1	Total	C	O	0	0
			7	5	2		
2	B	1	Total	C	O	0	0
			7	5	2		

- Molecule 3 is 1,2-ETHANEDIOL (three-letter code: EDO) (formula: C<sub>2</sub>H<sub>6</sub>O<sub>2</sub>).



Mol	Chain	Residues	Atoms			ZeroOcc	AltConf
3	A	1	Total	C	O	0	0
			4	2	2		
3	A	1	Total	C	O	0	0
			4	2	2		
3	A	1	Total	C	O	0	1
			8	4	4		
3	A	1	Total	C	O	0	0
			4	2	2		
3	A	1	Total	C	O	0	0
			4	2	2		
3	A	1	Total	C	O	0	0
			4	2	2		

Continued on next page...

*Continued from previous page...*

Mol	Chain	Residues	Atoms			ZeroOcc	AltConf
3	A	1	Total 4	C 2	O 2	0	0
3	A	1	Total 4	C 2	O 2	0	0
3	A	1	Total 4	C 2	O 2	0	0
3	A	1	Total 4	C 2	O 2	0	0
3	A	1	Total 4	C 2	O 2	0	0
3	A	1	Total 4	C 2	O 2	0	0
3	A	1	Total 4	C 2	O 2	0	0
3	A	1	Total 4	C 2	O 2	0	0
3	A	1	Total 4	C 2	O 2	0	0
3	A	1	Total 4	C 2	O 2	0	0
3	A	1	Total 4	C 2	O 2	0	0
3	A	1	Total 4	C 2	O 2	0	0
3	A	1	Total 4	C 2	O 2	0	0
3	A	1	Total 4	C 2	O 2	0	0
3	A	1	Total 4	C 2	O 2	0	0
3	A	1	Total 4	C 2	O 2	0	0
3	B	1	Total 4	C 2	O 2	0	0
3	B	1	Total 4	C 2	O 2	0	0
3	B	1	Total 4	C 2	O 2	0	0
3	B	1	Total 4	C 2	O 2	0	0
3	B	1	Total 4	C 2	O 2	0	0

*Continued on next page...*

*Continued from previous page...*

Mol	Chain	Residues	Atoms	ZeroOcc	AltConf
3	B	1	Total C O 4 2 2	0	0
3	B	1	Total C O 4 2 2	0	0
3	B	1	Total C O 4 2 2	0	0
3	B	1	Total C O 4 2 2	0	0
3	B	1	Total C O 4 2 2	0	0
3	B	1	Total C O 4 2 2	0	0
3	B	1	Total C O 4 2 2	0	0
3	B	1	Total C O 4 2 2	0	0
3	B	1	Total C O 4 2 2	0	0
3	B	1	Total C O 4 2 2	0	0
3	B	1	Total C O 4 2 2	0	0
3	B	1	Total C O 4 2 2	0	0
3	B	1	Total C O 4 2 2	0	0
3	B	1	Total C O 4 2 2	0	0
3	B	1	Total C O 4 2 2	0	0
3	B	1	Total C O 4 2 2	0	0

- Molecule 4 is SODIUM ION (three-letter code: NA) (formula: Na).

Mol	Chain	Residues	Atoms	ZeroOcc	AltConf
4	B	3	Total Na 3 3	0	0
4	A	3	Total Na 3 3	0	0

- Molecule 5 is FE (III) ION (three-letter code: FE) (formula: Fe).

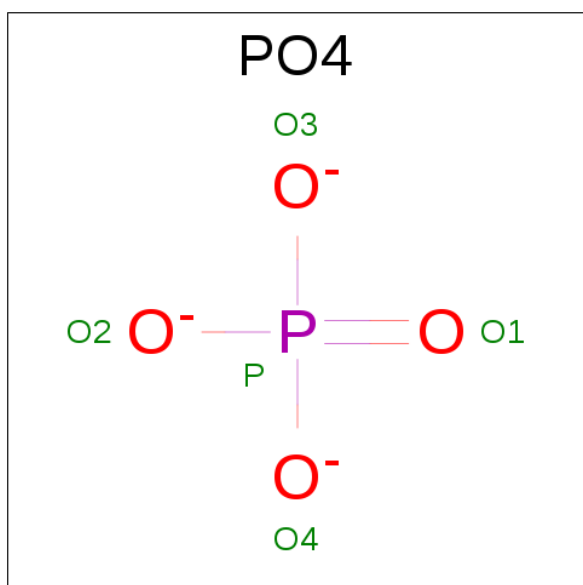


Mol	Chain	Residues	Atoms		ZeroOcc	AltConf
5	B	1	Total	Fe	0	0
			1	1		
5	A	1	Total	Fe	0	0
			1	1		

- Molecule 6 is CALCIUM ION (three-letter code: CA) (formula: Ca).

Mol	Chain	Residues	Atoms		ZeroOcc	AltConf
6	B	2	Total	Ca	0	0
			2	2		
6	A	2	Total	Ca	0	0
			2	2		

- Molecule 7 is PHOSPHATE ION (three-letter code: PO4) (formula: O<sub>4</sub>P).



Mol	Chain	Residues	Atoms			ZeroOcc	AltConf
7	A	1	Total	O	P	0	0
			5	4	1		
7	B	1	Total	O	P	0	0
			5	4	1		

- Molecule 8 is water.

Mol	Chain	Residues	Atoms		ZeroOcc	AltConf
8	A	325	Total	O	0	0
			325	325		

*Continued on next page...*

*Continued from previous page...*

Mol	Chain	Residues	Atoms		ZeroOcc	AltConf
8	B	300	Total 300	O 300	0	0

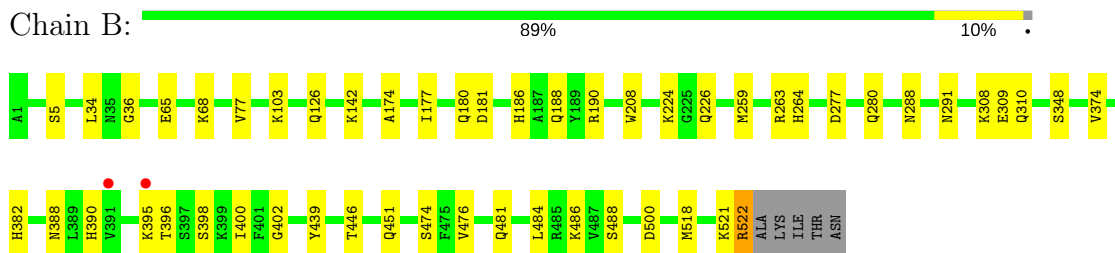
### 3 Residue-property plots

These plots are drawn for all protein, RNA and DNA chains in the entry. The first graphic for a chain summarises the proportions of the various outlier classes displayed in the second graphic. The second graphic shows the sequence view annotated by issues in geometry and electron density. Residues are color-coded according to the number of geometric quality criteria for which they contain at least one outlier: green = 0, yellow = 1, orange = 2 and red = 3 or more. A red dot above a residue indicates a poor fit to the electron density ( $RSRZ > 2$ ). Stretches of 2 or more consecutive residues without any outlier are shown as a green connector. Residues present in the sample, but not in the model, are shown in grey.

#### • Molecule 1: ALKALINE PHOSPHATASE D



#### • Molecule 1: ALKALINE PHOSPHATASE D



## 4 Data and refinement statistics

Property	Value	Source
Space group	I 41 2 2	Depositor
Cell constants a, b, c, $\alpha$ , $\beta$ , $\gamma$	147.32Å 147.32Å 347.65Å 90.00° 90.00° 90.00°	Depositor
Resolution (Å)	135.64 – 1.93 91.08 – 1.93	Depositor EDS
% Data completeness (in resolution range)	98.8 (135.64-1.93) 98.8 (91.08-1.93)	Depositor EDS
$R_{merge}$	0.08	Depositor
$R_{sym}$	(Not available)	Depositor
$\langle I/\sigma(I) \rangle$ <sup>1</sup>	2.01 (at 1.92Å)	Xtriage
Refinement program	REFMAC 5.6.0095	Depositor
R, $R_{free}$	0.178 , 0.202 0.188 , 0.211	Depositor DCC
$R_{free}$ test set	7107 reflections (5.31%)	DCC
Wilson B-factor (Å <sup>2</sup> )	26.6	Xtriage
Anisotropy	0.107	Xtriage
Bulk solvent $k_{sol}$ (e/Å <sup>3</sup> ), $B_{sol}$ (Å <sup>2</sup> )	0.38 , 57.7	EDS
L-test for twinning <sup>2</sup>	$\langle  L  \rangle = 0.52$ , $\langle L^2 \rangle = 0.35$	Xtriage
Estimated twinning fraction	No twinning to report.	Xtriage
$F_o, F_c$ correlation	0.96	EDS
Total number of atoms	9447	wwPDB-VP
Average B, all atoms (Å <sup>2</sup> )	30.0	wwPDB-VP

Xtriage's analysis on translational NCS is as follows: *The analyses of the Patterson function reveals a significant off-origin peak that is 43.66 % of the origin peak, indicating pseudo translational symmetry. The chance of finding a peak of this or larger height randomly in a structure without pseudo translational symmetry is equal to 1.7077e-04. The detected translational NCS is most likely also responsible for the elevated intensity ratio.*

<sup>1</sup>Intensities estimated from amplitudes.

<sup>2</sup>Theoretical values of  $\langle |L| \rangle$ ,  $\langle L^2 \rangle$  for acentric reflections are 0.5, 0.333 respectively for untwinned datasets, and 0.375, 0.2 for perfectly twinned datasets.

## 5 Model quality [i](#)

### 5.1 Standard geometry [i](#)

Bond lengths and bond angles in the following residue types are not validated in this section: NA, PO4, EDO, FE, PE5, CA

The Z score for a bond length (or angle) is the number of standard deviations the observed value is removed from the expected value. A bond length (or angle) with  $|Z| > 5$  is considered an outlier worth inspection. RMSZ is the root-mean-square of all Z scores of the bond lengths (or angles).

Mol	Chain	Bond lengths		Bond angles	
		RMSZ	$\# Z  > 5$	RMSZ	$\# Z  > 5$
1	A	0.65	0/4306	0.67	0/5845
1	B	0.60	0/4312	0.66	1/5852 (0.0%)
All	All	0.63	0/8618	0.67	1/11697 (0.0%)

There are no bond length outliers.

All (1) bond angle outliers are listed below:

Mol	Chain	Res	Type	Atoms	Z	Observed(°)	Ideal(°)
1	B	263	ARG	NE-CZ-NH1	5.51	123.05	120.30

There are no chirality outliers.

There are no planarity outliers.

### 5.2 Too-close contacts [i](#)

In the following table, the Non-H and H(model) columns list the number of non-hydrogen atoms and hydrogen atoms in the chain respectively. The H(added) column lists the number of hydrogen atoms added and optimized by MolProbity. The Clashes column lists the number of clashes within the asymmetric unit, whereas Symm-Clashes lists symmetry related clashes.

Mol	Chain	Non-H	H(model)	H(added)	Clashes	Symm-Clashes
1	A	4187	0	4006	56	0
1	B	4193	0	4009	42	0
2	A	113	0	124	18	0
2	B	131	0	145	17	0
3	A	92	0	138	22	0
3	B	84	0	126	7	0
4	A	3	0	0	0	0
4	B	3	0	0	0	0

*Continued on next page...*

*Continued from previous page...*

Mol	Chain	Non-H	H(model)	H(added)	Clashes	Symm-Clashes
5	A	1	0	0	0	0
5	B	1	0	0	0	0
6	A	2	0	0	0	0
6	B	2	0	0	0	0
7	A	5	0	0	0	0
7	B	5	0	0	0	0
8	A	325	0	0	11	0
8	B	300	0	0	9	0
All	All	9447	0	8548	107	0

The all-atom clashscore is defined as the number of clashes found per 1000 atoms (including hydrogen atoms). The all-atom clashscore for this structure is 6.

The worst 5 of 107 close contacts within the same asymmetric unit are listed below, sorted by their clash magnitude.

Atom-1	Atom-2	Interatomic distance (Å)	Clash overlap (Å)
1:A:224:LYS:H	2:A:554:PE5:H482	1.30	0.96
1:B:224:LYS:H	2:B:554:PE5:H482	1.32	0.94
2:B:534:PE5:H482	8:B:2244:HOH:O	1.72	0.88
1:A:518:MET:HE2	8:B:2181:HOH:O	1.77	0.84
1:A:388:ASN:HD21	1:A:484:LEU:H	1.19	0.84

There are no symmetry-related clashes.

## 5.3 Torsion angles [i](#)

### 5.3.1 Protein backbone [i](#)

In the following table, the Percentiles column shows the percent Ramachandran outliers of the chain as a percentile score with respect to all X-ray entries followed by that with respect to entries of similar resolution.

The Analysed column shows the number of residues for which the backbone conformation was analysed, and the total number of residues.

Mol	Chain	Analysed	Favoured	Allowed	Outliers	Percentiles	
1	A	520/527 (99%)	502 (96%)	17 (3%)	1 (0%)	51	40
1	B	521/527 (99%)	504 (97%)	17 (3%)	0	100	100
All	All	1041/1054 (99%)	1006 (97%)	34 (3%)	1 (0%)	55	45

All (1) Ramachandran outliers are listed below:

Mol	Chain	Res	Type
1	A	521	LYS

### 5.3.2 Protein sidechains [i](#)

In the following table, the Percentiles column shows the percent sidechain outliers of the chain as a percentile score with respect to all X-ray entries followed by that with respect to entries of similar resolution.

The Analysed column shows the number of residues for which the sidechain conformation was analysed, and the total number of residues.

Mol	Chain	Analysed	Rotameric	Outliers	Percentiles	
1	A	445/449 (99%)	436 (98%)	9 (2%)	60	51
1	B	446/449 (99%)	436 (98%)	10 (2%)	57	47
All	All	891/898 (99%)	872 (98%)	19 (2%)	59	49

5 of 19 residues with a non-rotameric sidechain are listed below:

Mol	Chain	Res	Type
1	A	521	LYS
1	B	142	LYS
1	B	500	ASP
1	A	518	MET
1	B	518	MET

Some sidechains can be flipped to improve hydrogen bonding and reduce clashes. 5 of 23 such sidechains are listed below:

Mol	Chain	Res	Type
1	B	186	HIS
1	B	288	ASN
1	B	481	GLN
1	B	280	GLN
1	B	291	ASN

### 5.3.3 RNA [i](#)

There are no RNA molecules in this entry.

## 5.4 Non-standard residues in protein, DNA, RNA chains ⓘ

There are no non-standard protein/DNA/RNA residues in this entry.

## 5.5 Carbohydrates ⓘ

There are no carbohydrates in this entry.

## 5.6 Ligand geometry ⓘ

Of 88 ligands modelled in this entry, 12 are monoatomic - leaving 76 for Mogul analysis.

In the following table, the Counts columns list the number of bonds (or angles) for which Mogul statistics could be retrieved, the number of bonds (or angles) that are observed in the model and the number of bonds (or angles) that are defined in the chemical component dictionary. The Link column lists molecule types, if any, to which the group is linked. The Z score for a bond length (or angle) is the number of standard deviations the observed value is removed from the expected value. A bond length (or angle) with  $|Z| > 2$  is considered an outlier worth inspection. RMSZ is the root-mean-square of all Z scores of the bond lengths (or angles).

Mol	Type	Chain	Res	Link	Bond lengths			Bond angles		
					Counts	RMSZ	$\# Z  > 2$	Counts	RMSZ	$\# Z  > 2$
7	PO4	A	1527	5,6	4,4,4	0.78	0	6,6,6	1.68	2 (33%)
2	PE5	A	529	-	12,12,26	0.50	0	11,11,25	0.32	0
2	PE5	A	530	-	6,6,26	0.44	0	5,5,25	0.57	0
2	PE5	A	531	-	5,5,26	0.65	0	4,4,25	0.66	0
3	EDO	A	532	-	3,3,3	0.39	0	2,2,2	0.30	0
3	EDO	A	533	-	3,3,3	0.43	0	2,2,2	0.31	0
2	PE5	A	534	-	15,15,26	0.50	0	14,14,25	0.51	0
3	EDO	A	535[A]	-	3,3,3	0.44	0	2,2,2	0.26	0
3	EDO	A	535[B]	-	3,3,3	0.50	0	2,2,2	0.23	0
2	PE5	A	536	-	5,5,26	0.68	0	4,4,25	0.41	0
3	EDO	A	537	-	3,3,3	0.39	0	2,2,2	0.17	0
3	EDO	A	539	-	3,3,3	0.36	0	2,2,2	0.14	0
3	EDO	A	540	-	3,3,3	0.51	0	2,2,2	0.27	0
3	EDO	A	541	-	3,3,3	0.50	0	2,2,2	0.30	0
3	EDO	A	545	-	3,3,3	0.54	0	2,2,2	0.13	0
2	PE5	A	546	-	7,7,26	0.66	0	6,6,25	0.42	0
3	EDO	A	548	-	3,3,3	0.48	0	2,2,2	0.22	0
3	EDO	A	549	-	3,3,3	0.43	0	2,2,2	0.35	0
3	EDO	A	550	-	3,3,3	0.53	0	2,2,2	0.18	0
3	EDO	A	551	-	3,3,3	0.49	0	2,2,2	0.22	0
3	EDO	A	552	-	3,3,3	0.62	0	2,2,2	0.14	0
2	PE5	A	553	-	6,6,26	0.56	0	5,5,25	0.43	0



Mol	Type	Chain	Res	Link	Bond lengths			Bond angles		
					Counts	RMSZ	# Z  > 2	Counts	RMSZ	# Z  > 2
2	PE5	A	554	-	3,3,26	0.72	0	2,2,25	0.40	0
2	PE5	A	555	-	5,5,26	0.52	0	4,4,25	0.33	0
2	PE5	A	557	-	6,6,26	0.65	0	5,5,25	0.37	0
2	PE5	A	558	-	6,6,26	0.57	0	5,5,25	0.38	0
3	EDO	A	560	-	3,3,3	0.45	0	2,2,2	0.50	0
3	EDO	A	561	-	3,3,3	0.36	0	2,2,2	0.57	0
3	EDO	A	562	-	3,3,3	0.49	0	2,2,2	0.09	0
3	EDO	A	564	-	3,3,3	0.44	0	2,2,2	0.15	0
3	EDO	A	565	-	3,3,3	0.57	0	2,2,2	0.07	0
3	EDO	A	566	-	3,3,3	0.41	0	2,2,2	0.33	0
3	EDO	A	569	-	3,3,3	0.42	0	2,2,2	0.33	0
2	PE5	A	575	-	11,11,26	0.61	0	10,10,25	0.41	0
3	EDO	A	576	-	3,3,3	0.50	0	2,2,2	0.27	0
3	EDO	A	579	-	3,3,3	0.65	0	2,2,2	0.41	0
2	PE5	A	580	-	6,6,26	0.69	0	5,5,25	0.36	0
2	PE5	A	581	-	6,6,26	0.49	0	5,5,25	0.31	0
7	PO4	B	1527	5,6	4,4,4	0.63	0	6,6,6	1.77	2 (33%)
2	PE5	B	529	-	12,12,26	0.51	0	11,11,25	0.20	0
2	PE5	B	530	-	6,6,26	0.48	0	5,5,25	0.26	0
2	PE5	B	531	-	5,5,26	0.68	0	4,4,25	0.48	0
3	EDO	B	532	-	3,3,3	0.48	0	2,2,2	0.25	0
3	EDO	B	533	-	3,3,3	0.42	0	2,2,2	0.40	0
2	PE5	B	534	-	15,15,26	0.51	0	14,14,25	0.70	0
3	EDO	B	535	-	3,3,3	0.55	0	2,2,2	0.11	0
2	PE5	B	536	-	5,5,26	0.57	0	4,4,25	0.28	0
3	EDO	B	537	-	3,3,3	0.41	0	2,2,2	0.30	0
2	PE5	B	538	-	14,14,26	0.60	0	13,13,25	0.48	0
3	EDO	B	540	-	3,3,3	0.51	0	2,2,2	0.15	0
3	EDO	B	541	-	3,3,3	0.47	0	2,2,2	0.30	0
3	EDO	B	545	-	3,3,3	0.41	0	2,2,2	0.36	0
2	PE5	B	546	-	7,7,26	0.72	0	6,6,25	0.93	0
3	EDO	B	548	-	3,3,3	0.45	0	2,2,2	0.38	0
3	EDO	B	549	-	3,3,3	0.44	0	2,2,2	0.29	0
3	EDO	B	550	-	3,3,3	0.53	0	2,2,2	0.13	0
3	EDO	B	551	-	3,3,3	0.47	0	2,2,2	0.15	0
3	EDO	B	552	-	3,3,3	0.50	0	2,2,2	0.45	0
2	PE5	B	553	-	6,6,26	0.57	0	5,5,25	0.11	0
2	PE5	B	554	-	3,3,26	0.73	0	2,2,25	0.48	0
2	PE5	B	555	-	5,5,26	0.51	0	4,4,25	0.27	0
2	PE5	B	556	-	6,6,26	0.62	0	5,5,25	0.53	0
2	PE5	B	557	-	6,6,26	0.63	0	5,5,25	0.53	0
2	PE5	B	558	-	6,6,26	0.56	0	5,5,25	0.25	0
3	EDO	B	560	-	3,3,3	0.39	0	2,2,2	0.43	0

Mol	Type	Chain	Res	Link	Bond lengths			Bond angles		
					Counts	RMSZ	# Z  > 2	Counts	RMSZ	# Z  > 2
3	EDO	B	561	-	3,3,3	0.40	0	2,2,2	0.34	0
3	EDO	B	562	-	3,3,3	0.44	0	2,2,2	0.42	0
3	EDO	B	565	-	3,3,3	0.70	0	2,2,2	0.32	0
3	EDO	B	566	-	3,3,3	0.42	0	2,2,2	0.46	0
2	PE5	B	568	-	7,7,26	0.52	0	6,6,25	0.29	0
3	EDO	B	569	-	3,3,3	0.45	0	2,2,2	0.36	0
3	EDO	B	573	-	3,3,3	0.43	0	2,2,2	0.32	0
3	EDO	B	576	-	3,3,3	0.46	0	2,2,2	0.40	0
3	EDO	B	579	-	3,3,3	0.52	0	2,2,2	0.12	0
2	PE5	B	580	-	6,6,26	0.73	0	5,5,25	0.81	0
2	PE5	B	581	-	6,6,26	0.56	0	5,5,25	0.44	0

In the following table, the Chirals column lists the number of chiral outliers, the number of chiral centers analysed, the number of these observed in the model and the number defined in the chemical component dictionary. Similar counts are reported in the Torsion and Rings columns. '-' means no outliers of that kind were identified.

Mol	Type	Chain	Res	Link	Chirals	Torsions	Rings
7	PO4	A	1527	5,6	-	0/0/0/0	0/0/0/0
2	PE5	A	529	-	-	0/10/10/24	0/0/0/0
2	PE5	A	530	-	-	0/4/4/24	0/0/0/0
2	PE5	A	531	-	-	0/3/3/24	0/0/0/0
3	EDO	A	532	-	-	0/1/1/1	0/0/0/0
3	EDO	A	533	-	-	0/1/1/1	0/0/0/0
2	PE5	A	534	-	-	0/13/13/24	0/0/0/0
3	EDO	A	535[A]	-	-	0/1/1/1	0/0/0/0
3	EDO	A	535[B]	-	-	0/1/1/1	0/0/0/0
2	PE5	A	536	-	-	0/3/3/24	0/0/0/0
3	EDO	A	537	-	-	0/1/1/1	0/0/0/0
3	EDO	A	539	-	-	0/1/1/1	0/0/0/0
3	EDO	A	540	-	-	0/1/1/1	0/0/0/0
3	EDO	A	541	-	-	0/1/1/1	0/0/0/0
3	EDO	A	545	-	-	0/1/1/1	0/0/0/0
2	PE5	A	546	-	-	0/5/5/24	0/0/0/0
3	EDO	A	548	-	-	0/1/1/1	0/0/0/0
3	EDO	A	549	-	-	0/1/1/1	0/0/0/0
3	EDO	A	550	-	-	0/1/1/1	0/0/0/0
3	EDO	A	551	-	-	0/1/1/1	0/0/0/0
3	EDO	A	552	-	-	0/1/1/1	0/0/0/0
2	PE5	A	553	-	-	0/4/4/24	0/0/0/0
2	PE5	A	554	-	-	0/0/1/24	0/0/0/0
2	PE5	A	555	-	-	0/3/3/24	0/0/0/0
2	PE5	A	557	-	-	0/4/4/24	0/0/0/0

*Continued on next page...*

*Continued from previous page...*

Mol	Type	Chain	Res	Link	Chirals	Torsions	Rings
2	PE5	A	558	-	-	0/4/4/24	0/0/0/0
3	EDO	A	560	-	-	0/1/1/1	0/0/0/0
3	EDO	A	561	-	-	0/1/1/1	0/0/0/0
3	EDO	A	562	-	-	0/1/1/1	0/0/0/0
3	EDO	A	564	-	-	0/1/1/1	0/0/0/0
3	EDO	A	565	-	-	0/1/1/1	0/0/0/0
3	EDO	A	566	-	-	0/1/1/1	0/0/0/0
3	EDO	A	569	-	-	0/1/1/1	0/0/0/0
2	PE5	A	575	-	-	0/9/9/24	0/0/0/0
3	EDO	A	576	-	-	0/1/1/1	0/0/0/0
3	EDO	A	579	-	-	0/1/1/1	0/0/0/0
2	PE5	A	580	-	-	0/4/4/24	0/0/0/0
2	PE5	A	581	-	-	0/4/4/24	0/0/0/0
7	PO4	B	1527	5,6	-	0/0/0/0	0/0/0/0
2	PE5	B	529	-	-	0/10/10/24	0/0/0/0
2	PE5	B	530	-	-	0/4/4/24	0/0/0/0
2	PE5	B	531	-	-	0/3/3/24	0/0/0/0
3	EDO	B	532	-	-	0/1/1/1	0/0/0/0
3	EDO	B	533	-	-	0/1/1/1	0/0/0/0
2	PE5	B	534	-	-	0/13/13/24	0/0/0/0
3	EDO	B	535	-	-	0/1/1/1	0/0/0/0
2	PE5	B	536	-	-	0/3/3/24	0/0/0/0
3	EDO	B	537	-	-	0/1/1/1	0/0/0/0
2	PE5	B	538	-	-	0/12/12/24	0/0/0/0
3	EDO	B	540	-	-	0/1/1/1	0/0/0/0
3	EDO	B	541	-	-	0/1/1/1	0/0/0/0
3	EDO	B	545	-	-	0/1/1/1	0/0/0/0
2	PE5	B	546	-	-	0/5/5/24	0/0/0/0
3	EDO	B	548	-	-	0/1/1/1	0/0/0/0
3	EDO	B	549	-	-	0/1/1/1	0/0/0/0
3	EDO	B	550	-	-	0/1/1/1	0/0/0/0
3	EDO	B	551	-	-	0/1/1/1	0/0/0/0
3	EDO	B	552	-	-	0/1/1/1	0/0/0/0
2	PE5	B	553	-	-	0/4/4/24	0/0/0/0
2	PE5	B	554	-	-	0/0/1/24	0/0/0/0
2	PE5	B	555	-	-	0/3/3/24	0/0/0/0
2	PE5	B	556	-	-	0/4/4/24	0/0/0/0
2	PE5	B	557	-	-	0/4/4/24	0/0/0/0
2	PE5	B	558	-	-	0/4/4/24	0/0/0/0
3	EDO	B	560	-	-	0/1/1/1	0/0/0/0
3	EDO	B	561	-	-	0/1/1/1	0/0/0/0
3	EDO	B	562	-	-	0/1/1/1	0/0/0/0

*Continued on next page...*

*Continued from previous page...*

Mol	Type	Chain	Res	Link	Chirals	Torsions	Rings
3	EDO	B	565	-	-	0/1/1/1	0/0/0/0
3	EDO	B	566	-	-	0/1/1/1	0/0/0/0
2	PE5	B	568	-	-	0/5/5/24	0/0/0/0
3	EDO	B	569	-	-	0/1/1/1	0/0/0/0
3	EDO	B	573	-	-	0/1/1/1	0/0/0/0
3	EDO	B	576	-	-	0/1/1/1	0/0/0/0
3	EDO	B	579	-	-	0/1/1/1	0/0/0/0
2	PE5	B	580	-	-	0/4/4/24	0/0/0/0
2	PE5	B	581	-	-	0/4/4/24	0/0/0/0

There are no bond length outliers.

All (4) bond angle outliers are listed below:

Mol	Chain	Res	Type	Atoms	Z	Observed(°)	Ideal(°)
7	B	1527	PO4	O4-P-O2	-3.38	95.49	107.90
7	A	1527	PO4	O4-P-O2	-3.06	96.66	107.90
7	B	1527	PO4	O3-P-O2	2.22	116.05	107.90
7	A	1527	PO4	O3-P-O2	2.24	116.13	107.90

There are no chirality outliers.

There are no torsion outliers.

There are no ring outliers.

27 monomers are involved in 64 short contacts:

Mol	Chain	Res	Type	Clashes	Symm-Clashes
2	A	529	PE5	1	0
2	A	534	PE5	8	0
2	A	536	PE5	2	0
3	A	539	EDO	5	0
2	A	546	PE5	1	0
3	A	552	EDO	1	0
2	A	554	PE5	2	0
2	A	557	PE5	1	0
3	A	564	EDO	3	0
3	A	565	EDO	1	0
3	A	566	EDO	4	0
3	A	569	EDO	4	0
3	A	579	EDO	4	0
2	A	580	PE5	1	0
2	A	581	PE5	2	0

*Continued on next page...*

*Continued from previous page...*

Mol	Chain	Res	Type	Clashes	Symm-Clashes
2	B	534	PE5	8	0
2	B	536	PE5	2	0
3	B	541	EDO	2	0
3	B	550	EDO	1	0
3	B	552	EDO	1	0
2	B	554	PE5	2	0
2	B	557	PE5	1	0
3	B	565	EDO	1	0
3	B	576	EDO	1	0
3	B	579	EDO	1	0
2	B	580	PE5	1	0
2	B	581	PE5	3	0

## 5.7 Other polymers [i](#)

There are no such residues in this entry.

## 5.8 Polymer linkage issues [i](#)

There are no chain breaks in this entry.

## 6 Fit of model and data [i](#)

### 6.1 Protein, DNA and RNA chains [i](#)

In the following table, the column labelled ‘#RSRZ > 2’ contains the number (and percentage) of RSRZ outliers, followed by percent RSRZ outliers for the chain as percentile scores relative to all X-ray entries and entries of similar resolution. The OWAB column contains the minimum, median, 95<sup>th</sup> percentile and maximum values of the occupancy-weighted average B-factor per residue. The column labelled ‘Q < 0.9’ lists the number of (and percentage) of residues with an average occupancy less than 0.9.

Mol	Chain	Analysed	<RSRZ>	#RSRZ>2	OWAB(Å <sup>2</sup> )	Q<0.9
1	A	522/527 (99%)	-0.09	1 (0%) 94 97	15, 24, 44, 89	0
1	B	522/527 (99%)	0.08	2 (0%) 92 95	17, 27, 50, 91	0
All	All	1044/1054 (99%)	-0.01	3 (0%) 93 96	15, 25, 48, 91	0

All (3) RSRZ outliers are listed below:

Mol	Chain	Res	Type	RSRZ
1	A	1	ALA	7.1
1	B	395	LYS	2.8
1	B	391	VAL	2.1

### 6.2 Non-standard residues in protein, DNA, RNA chains [i](#)

There are no non-standard protein/DNA/RNA residues in this entry.

### 6.3 Carbohydrates [i](#)

There are no carbohydrates in this entry.

### 6.4 Ligands [i](#)

In the following table, the Atoms column lists the number of modelled atoms in the group and the number defined in the chemical component dictionary. LLDF column lists the quality of electron density of the group with respect to its neighbouring residues in protein, DNA or RNA chains. The B-factors column lists the minimum, median, 95<sup>th</sup> percentile and maximum values of B factors of atoms in the group. The column labelled ‘Q < 0.9’ lists the number of atoms with occupancy less than 0.9.

Mol	Type	Chain	Res	Atoms	RSCC	RSR	LLDF	B-factors( $\text{\AA}^2$ )	Q<0.9
3	EDO	A	576	4/4	0.83	0.28	48.30	55,67,71,78	0
3	EDO	A	548	4/4	0.91	0.38	30.76	28,33,38,38	4
3	EDO	A	539	4/4	0.96	0.35	24.13	24,25,26,26	4
2	PE5	B	554	4/27	0.73	0.25	23.78	43,58,61,65	0
3	EDO	B	562	4/4	0.73	0.40	18.71	52,64,65,76	0
3	EDO	A	535[A]	4/4	0.89	0.20	16.37	32,34,35,38	4
3	EDO	A	535[B]	4/4	0.89	0.20	15.14	23,24,26,29	4
3	EDO	B	569	4/4	0.85	0.20	14.09	36,42,46,52	0
2	PE5	A	575	12/27	0.74	0.27	12.56	44,57,72,75	0
2	PE5	B	536	6/27	0.63	0.26	12.15	50,51,60,61	0
3	EDO	B	565	4/4	0.84	0.30	10.91	37,50,53,59	0
3	EDO	B	549	4/4	0.93	0.27	10.72	44,53,55,57	0
3	EDO	B	576	4/4	0.80	0.40	10.61	52,53,54,61	4
3	EDO	A	532	4/4	0.93	0.16	10.14	47,48,48,57	0
2	PE5	B	581	7/27	0.82	0.17	8.81	45,53,58,61	0
3	EDO	B	548	4/4	0.94	0.20	8.60	30,34,39,42	4
3	EDO	A	579	4/4	0.76	0.28	8.39	50,55,60,60	0
3	EDO	A	541	4/4	0.91	0.28	8.27	25,37,38,47	4
3	EDO	B	535	4/4	0.76	0.20	8.16	56,61,64,66	0
3	EDO	A	565	4/4	0.85	0.33	7.72	39,53,54,65	0
3	EDO	B	552	4/4	0.86	0.27	5.70	43,53,53,65	0
3	EDO	B	561	4/4	0.93	0.17	5.49	39,47,48,51	0
3	EDO	B	573	4/4	0.81	0.17	5.45	48,50,55,58	0
3	EDO	B	541	4/4	0.89	0.24	4.79	27,40,40,47	4
2	PE5	B	557	7/27	0.80	0.18	4.75	30,54,63,65	0
2	PE5	B	546	8/27	0.76	0.17	4.62	45,51,54,56	0
2	PE5	B	538	15/27	0.75	0.19	4.03	42,53,67,69	0
6	CA	A	1525	1/1	0.99	0.13	3.69	18,18,18,18	0
2	PE5	B	558	7/27	0.78	0.20	3.56	53,59,68,71	0
3	EDO	A	552	4/4	0.82	0.27	3.30	44,46,56,57	0
3	EDO	A	561	4/4	0.94	0.14	3.26	38,42,42,42	0
2	PE5	A	554	4/27	0.87	0.17	3.24	31,48,53,54	0
5	FE	A	1524	1/1	0.99	0.12	3.06	17,17,17,17	0
2	PE5	B	531	6/27	0.80	0.22	2.74	49,55,57,64	0
3	EDO	A	540	4/4	0.97	0.15	2.57	29,34,34,36	0
4	NA	A	577	1/1	0.98	0.12	2.48	13,13,13,13	0
2	PE5	B	530	7/27	0.91	0.13	2.47	40,43,47,51	0
2	PE5	A	546	8/27	0.81	0.19	2.42	45,53,54,59	0
2	PE5	B	534	16/27	0.86	0.17	2.30	36,48,58,58	0
2	PE5	A	557	7/27	0.84	0.16	2.17	31,46,55,58	0
6	CA	A	1526	1/1	1.00	0.10	2.07	20,20,20,20	0
3	EDO	B	532	4/4	0.89	0.13	1.91	51,52,53,56	0

Continued on next page...

*Continued from previous page...*

Mol	Type	Chain	Res	Atoms	RSCC	RSR	LLDF	B-factors( $\text{\AA}^2$ )	Q<0.9
2	PE5	A	534	16/27	0.89	0.16	1.85	36,53,61,68	0
4	NA	B	577	1/1	0.97	0.13	1.65	19,19,19,19	0
2	PE5	A	531	6/27	0.87	0.17	1.61	41,43,47,53	0
4	NA	B	582	1/1	0.95	0.14	1.46	16,16,16,16	0
7	PO4	B	1527	5/5	0.97	0.13	1.38	20,21,21,22	0
7	PO4	A	1527	5/5	0.99	0.11	1.37	16,18,19,19	0
3	EDO	A	551	4/4	0.76	0.17	1.18	66,67,68,69	0
3	EDO	B	579	4/4	0.83	0.22	1.01	62,64,64,69	0
6	CA	B	1526	1/1	0.97	0.12	0.98	23,23,23,23	0
6	CA	B	1525	1/1	0.96	0.12	0.92	20,20,20,20	0
3	EDO	A	549	4/4	0.92	0.13	0.57	40,44,47,52	0
2	PE5	A	558	7/27	0.85	0.21	0.41	50,55,62,64	0
2	PE5	A	530	7/27	0.94	0.11	0.23	38,39,45,46	0
3	EDO	B	540	4/4	0.87	0.12	-0.04	48,50,51,51	0
4	NA	A	582	1/1	0.99	0.10	-0.38	14,14,14,14	0
5	FE	B	1524	1/1	0.97	0.12	-0.60	19,19,19,19	0
3	EDO	B	537	4/4	0.95	0.09	-0.88	45,46,47,53	0
2	PE5	B	568	8/27	0.78	0.12	-2.33	66,71,79,88	0
2	PE5	A	555	6/27	0.71	0.26	-	53,59,64,66	0
2	PE5	A	581	7/27	0.80	0.16	-	43,56,60,60	0
3	EDO	B	560	4/4	0.87	0.14	-	54,55,58,68	0
2	PE5	B	556	7/27	0.76	0.17	-	60,66,70,71	0
2	PE5	B	529	13/27	0.83	0.26	-	48,58,62,65	0
3	EDO	B	545	4/4	0.86	0.18	-	42,48,58,61	0
2	PE5	A	580	7/27	0.78	0.19	-	53,54,65,66	0
2	PE5	A	536	6/27	0.59	0.30	-	54,57,61,76	0
3	EDO	A	564	4/4	0.86	0.29	-	37,42,43,49	0
3	EDO	B	533	4/4	0.90	0.14	-	52,53,55,61	0
3	EDO	A	545	4/4	0.89	0.32	-	49,54,56,56	0
2	PE5	B	553	7/27	0.74	0.20	-	56,60,63,65	0
2	PE5	B	555	6/27	0.66	0.20	-	55,61,64,68	0
3	EDO	A	537	4/4	0.79	0.14	-	46,51,54,62	0
3	EDO	A	533	4/4	0.91	0.11	-	47,50,50,55	0
2	PE5	A	553	7/27	0.76	0.18	-	47,57,61,65	0
3	EDO	A	566	4/4	0.87	0.17	-	49,50,54,58	0
4	NA	A	1585	1/1	0.98	0.19	-	23,23,23,23	0
3	EDO	A	562	4/4	0.84	0.20	-	50,53,57,61	0
3	EDO	A	560	4/4	0.80	0.21	-	53,62,64,67	0
3	EDO	B	551	4/4	0.84	0.16	-	62,63,64,67	0
2	PE5	B	580	7/27	0.77	0.16	-	45,55,62,63	0
3	EDO	A	550	4/4	0.86	0.21	-	40,50,53,58	0
4	NA	B	1585	1/1	0.95	0.15	-	26,26,26,26	0

*Continued on next page...*



*Continued from previous page...*

Mol	Type	Chain	Res	Atoms	RSCC	RSR	LLDF	B-factors( $\text{\AA}^2$ )	Q<0.9
2	PE5	A	529	13/27	0.88	0.12	-	51,57,62,68	0
3	EDO	B	550	4/4	0.73	0.19	-	43,50,50,56	0
3	EDO	A	569	4/4	0.83	0.21	-	42,43,52,59	0
3	EDO	B	566	4/4	0.85	0.14	-	65,66,68,74	0

## 6.5 Other polymers [i](#)

There are no such residues in this entry.