



# Full wwPDB X-ray Structure Validation Report ⓘ

Oct 2, 2017 – 11:41 AM EDT

PDB ID : 1YVF  
Title : Hepatitis C virus NS5B RNA-dependent RNA polymerase complex with inhibitor PHA-00729145  
Authors : Pfefferkorn, J.A.; Greene, M.L.; Nugent, R.A.; Gross, R.J.; Mitchell, M.A.; Finzel, B.C.; Harris, M.S.; Wells, P.A.; Shelly, J.A.; Anstadt, R.A.; Kilkuskie, R.E.; Kopta, L.A.; Schwende, F.J.  
Deposited on : unknown  
Resolution : 2.50 Å(reported)

This is a Full wwPDB X-ray Structure Validation Report for a publicly released PDB entry.

We welcome your comments at [validation@mail.wwpdb.org](mailto:validation@mail.wwpdb.org)

A user guide is available at

<http://wwpdb.org/validation/2016/XrayValidationReportHelp>

with specific help available everywhere you see the ⓘ symbol.

---

The following versions of software and data (see [references ⓘ](#)) were used in the production of this report:

MolProbity : 4.02b-467  
Mogul : 1.7.2 (RC1), CSD as538be (2017)  
Xtriage (Phenix) : 1.9-1692  
EDS : rb-20030345  
Percentile statistics : 20161228.v01 (using entries in the PDB archive December 28th 2016)  
Refmac : 5.8.0135  
CCP4 : 6.5.0  
Ideal geometry (proteins) : Engh & Huber (2001)  
Ideal geometry (DNA, RNA) : Parkinson et al. (1996)  
Validation Pipeline (wwPDB-VP) : rb-20030345

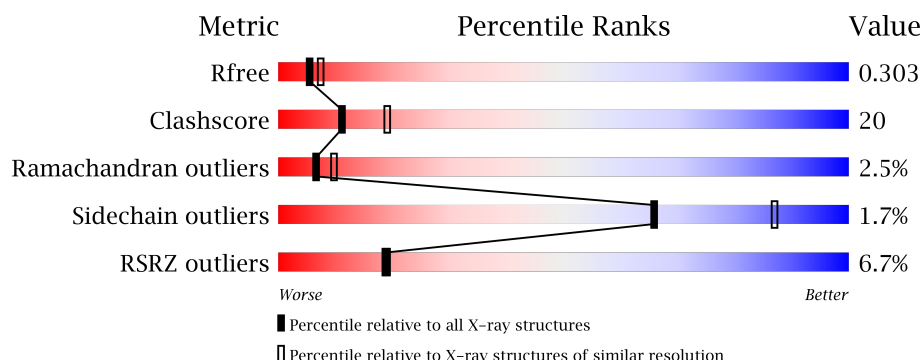
# 1 Overall quality at a glance

The following experimental techniques were used to determine the structure:

## *X-RAY DIFFRACTION*

The reported resolution of this entry is 2.50 Å.

Percentile scores (ranging between 0-100) for global validation metrics of the entry are shown in the following graphic. The table shows the number of entries on which the scores are based.



Metric	Whole archive (#Entries)	Similar resolution (#Entries, resolution range(Å))
$R_{free}$	100719	3846 (2.50-2.50)
Clashscore	112137	4554 (2.50-2.50)
Ramachandran outliers	110173	4463 (2.50-2.50)
Sidechain outliers	110143	4465 (2.50-2.50)
RSRZ outliers	101464	3876 (2.50-2.50)

The table below summarises the geometric issues observed across the polymeric chains and their fit to the electron density. The red, orange, yellow and green segments on the lower bar indicate the fraction of residues that contain outliers for  $\geq 3$ , 2, 1 and 0 types of geometric quality criteria. A grey segment represents the fraction of residues that are not modelled. The numeric value for each fraction is indicated below the corresponding segment, with a dot representing fractions  $\leq 5\%$ . The upper red bar (where present) indicates the fraction of residues that have poor fit to the electron density. The numeric value is given above the bar.

Mol	Chain	Length	Quality of chain
1	A	577	

The following table lists non-polymeric compounds, carbohydrate monomers and non-standard residues in protein, DNA, RNA chains that are outliers for geometric or electron-density-fit criteria:

Mol	Type	Chain	Res	Chirality	Geometry	Clashes	Electron density
2	PO4	A	702	-	-	-	X
5	GOL	A	600	-	-	-	X

*Continued on next page...*

*Continued from previous page...*

Mol	Type	Chain	Res	Chirality	Geometry	Clashes	Electron density
5	GOL	A	601	-	-	-	X
5	GOL	A	602	-	-	X	-

## 2 Entry composition [i](#)

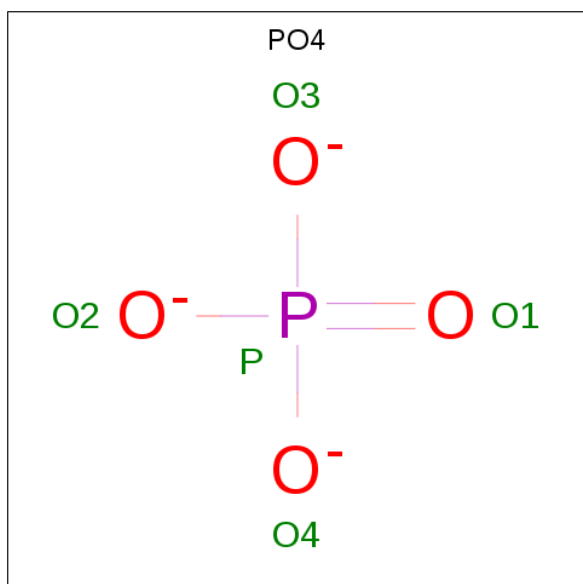
There are 6 unique types of molecules in this entry. The entry contains 4676 atoms, of which 0 are hydrogens and 0 are deuteriums.

In the tables below, the ZeroOcc column contains the number of atoms modelled with zero occupancy, the AltConf column contains the number of residues with at least one atom in alternate conformation and the Trace column contains the number of residues modelled with at most 2 atoms.

- Molecule 1 is a protein called HCV NS5B POLYMERASE.

Mol	Chain	Residues	Atoms					ZeroOcc	AltConf	Trace
1	A	564	Total	C	N	O	S	0	0	0
			4390	2769	779	809	33			

- Molecule 2 is PHOSPHATE ION (three-letter code: PO4) (formula: O<sub>4</sub>P).



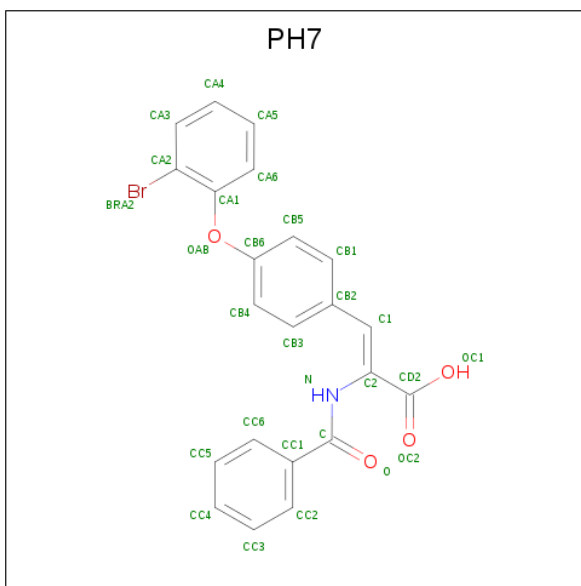
Mol	Chain	Residues	Atoms			ZeroOcc	AltConf
2	A	1	Total	O	P	0	0
			5	4	1		

- Molecule 3 is CHLORIDE ION (three-letter code: CL) (formula: Cl).

Mol	Chain	Residues	Atoms		ZeroOcc	AltConf
3	A	1	Total	Cl	0	0
			1	1		

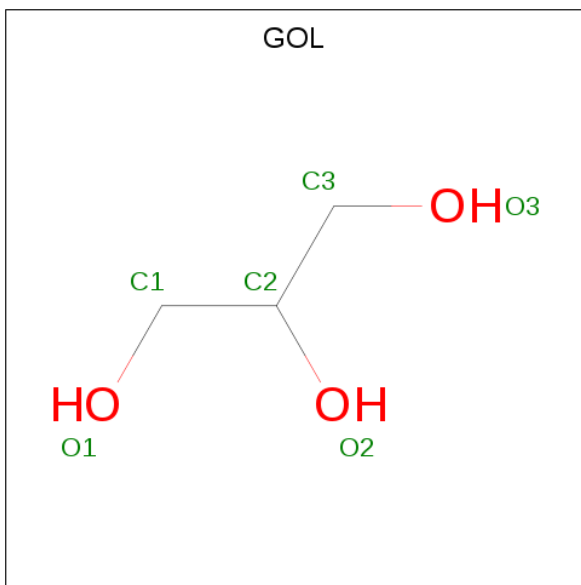
- Molecule 4 is (2Z)-2-(BENZOYLAMINO)-3-[4-(2-BROMOPHENOXY)PHENYL]-2-PROP

ENOIC ACID (three-letter code: PH7) (formula:  $C_{22}H_{16}BrNO_4$ ).



Mol	Chain	Residues	Atoms					ZeroOcc	AltConf
4	A	1	Total	Br	C	N	O	0	0
			28	1	22	1	4		

- Molecule 5 is GLYCEROL (three-letter code: GOL) (formula:  $C_3H_8O_3$ ).



Mol	Chain	Residues	Atoms			ZeroOcc	AltConf
5	A	1	Total	C	O	0	0
			6	3	3		
5	A	1	Total	C	O	0	0
			6	3	3		

*Continued on next page...*

*Continued from previous page...*

Mol	Chain	Residues	Atoms			ZeroOcc	AltConf
5	A	1	Total	C	O	0	0
			6	3	3		
5	A	1	Total	C	O	0	0
			6	3	3		

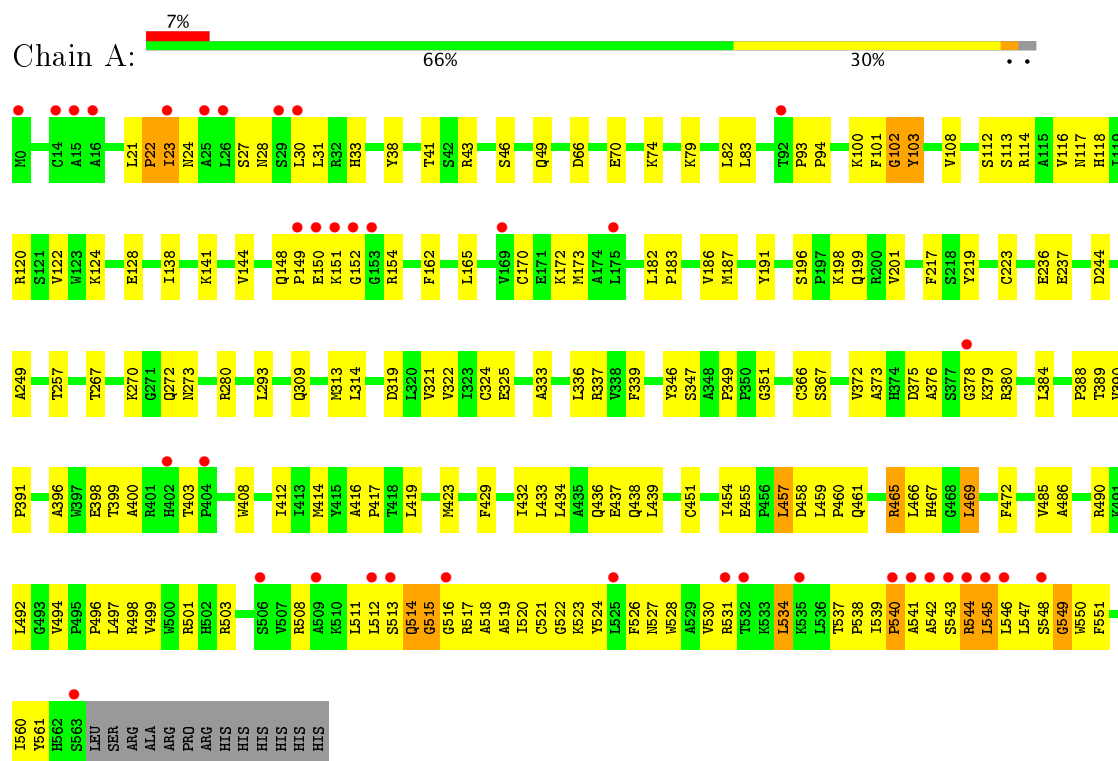
- Molecule 6 is water.

Mol	Chain	Residues	Atoms		ZeroOcc	AltConf
6	A	228	Total	O	0	0
			228	228		

### 3 Residue-property plots [i](#)

These plots are drawn for all protein, RNA and DNA chains in the entry. The first graphic for a chain summarises the proportions of the various outlier classes displayed in the second graphic. The second graphic shows the sequence view annotated by issues in geometry and electron density. Residues are color-coded according to the number of geometric quality criteria for which they contain at least one outlier: green = 0, yellow = 1, orange = 2 and red = 3 or more. A red dot above a residue indicates a poor fit to the electron density ( $RSRZ > 2$ ). Stretches of 2 or more consecutive residues without any outlier are shown as a green connector. Residues present in the sample, but not in the model, are shown in grey.

#### • Molecule 1: HCV NS5B POLYMERASE



## 4 Data and refinement statistics

Property	Value	Source
Space group	P 32 2 1	Depositor
Cell constants a, b, c, $\alpha$ , $\beta$ , $\gamma$	90.88Å 90.88Å 188.52Å 90.00° 90.00° 120.00°	Depositor
Resolution (Å)	30.00 – 2.50 19.96 – 2.50	Depositor EDS
% Data completeness (in resolution range)	94.5 (30.00-2.50) 94.6 (19.96-2.50)	Depositor EDS
$R_{merge}$	0.08	Depositor
$R_{sym}$	(Not available)	Depositor
$\langle I/\sigma(I) \rangle$ <sup>1</sup>	4.55 (at 2.50Å)	Xtriage
Refinement program	CNS	Depositor
R, $R_{free}$	0.240 , 0.303 0.238 , 0.303	Depositor DCC
$R_{free}$ test set	1521 reflections (5.30%)	DCC
Wilson B-factor (Å <sup>2</sup> )	46.0	Xtriage
Anisotropy	0.506	Xtriage
Bulk solvent $k_{sol}$ (e/Å <sup>3</sup> ), $B_{sol}$ (Å <sup>2</sup> )	0.34 , 48.0	EDS
L-test for twinning <sup>2</sup>	$\langle  L  \rangle = 0.50$ , $\langle L^2 \rangle = 0.33$	Xtriage
Estimated twinning fraction	0.027 for -h,-k,l	Xtriage
$F_o, F_c$ correlation	0.93	EDS
Total number of atoms	4676	wwPDB-VP
Average B, all atoms (Å <sup>2</sup> )	50.0	wwPDB-VP

Xtriage's analysis on translational NCS is as follows: *The largest off-origin peak in the Patterson function is 3.18% of the height of the origin peak. No significant pseudotranslation is detected.*

<sup>1</sup>Intensities estimated from amplitudes.

<sup>2</sup>Theoretical values of  $\langle |L| \rangle$ ,  $\langle L^2 \rangle$  for acentric reflections are 0.5, 0.333 respectively for untwinned datasets, and 0.375, 0.2 for perfectly twinned datasets.



## 5 Model quality [i](#)

### 5.1 Standard geometry [i](#)

Bond lengths and bond angles in the following residue types are not validated in this section: GOL, PO4, PH7, CL

The Z score for a bond length (or angle) is the number of standard deviations the observed value is removed from the expected value. A bond length (or angle) with  $|Z| > 5$  is considered an outlier worth inspection. RMSZ is the root-mean-square of all Z scores of the bond lengths (or angles).

Mol	Chain	Bond lengths		Bond angles	
		RMSZ	$\# Z  > 5$	RMSZ	$\# Z  > 5$
1	A	0.38	0/4485	0.62	1/6083 (0.0%)

There are no bond length outliers.

All (1) bond angle outliers are listed below:

Mol	Chain	Res	Type	Atoms	Z	Observed( $^{\circ}$ )	Ideal( $^{\circ}$ )
1	A	351	GLY	N-CA-C	-5.58	99.14	113.10

There are no chirality outliers.

There are no planarity outliers.

### 5.2 Too-close contacts [i](#)

In the following table, the Non-H and H(model) columns list the number of non-hydrogen atoms and hydrogen atoms in the chain respectively. The H(added) column lists the number of hydrogen atoms added and optimized by MolProbity. The Clashes column lists the number of clashes within the asymmetric unit, whereas Symm-Clashes lists symmetry related clashes.

Mol	Chain	Non-H	H(model)	H(added)	Clashes	Symm-Clashes
1	A	4390	0	4428	176	0
2	A	5	0	0	0	0
3	A	1	0	0	0	0
4	A	28	0	15	2	0
5	A	24	0	32	7	0
6	A	228	0	0	32	0
All	All	4676	0	4475	178	0

The all-atom clashscore is defined as the number of clashes found per 1000 atoms (including hydrogen atoms). The all-atom clashscore for this structure is 20.

All (178) close contacts within the same asymmetric unit are listed below, sorted by their clash magnitude.

Atom-1	Atom-2	Interatomic distance (Å)	Clash overlap (Å)
1:A:534:LEU:HD23	1:A:534:LEU:H	1.36	0.90
1:A:432:ILE:HB	6:A:910:HOH:O	1.76	0.85
1:A:83:LEU:HB2	1:A:173:MET:HA	1.61	0.83
1:A:375:ASP:OD2	1:A:379:LYS:HB3	1.78	0.82
1:A:21:LEU:HD12	1:A:22:PRO:HD2	1.64	0.79
1:A:439:LEU:HD12	1:A:514:GLN:HE22	1.48	0.77
1:A:457:LEU:HD13	1:A:517:ARG:HD3	1.67	0.77
1:A:429:PHE:HA	6:A:910:HOH:O	1.85	0.75
1:A:325:GLU:HG3	6:A:999:HOH:O	1.86	0.74
1:A:198:LYS:HB2	1:A:466:LEU:O	1.87	0.74
1:A:543:SER:HA	6:A:844:HOH:O	1.87	0.73
1:A:187:MET:HE3	1:A:293:LEU:HD23	1.71	0.73
1:A:515:GLY:HA2	1:A:519:ALA:HB2	1.68	0.73
1:A:93:PRO:HG3	1:A:561:TYR:HB2	1.73	0.69
1:A:457:LEU:HD12	1:A:517:ARG:NH1	2.08	0.69
1:A:102:GLY:O	1:A:103:TYR:HB3	1.92	0.68
1:A:21:LEU:HD11	6:A:864:HOH:O	1.95	0.67
1:A:433:LEU:HB3	1:A:439:LEU:HD23	1.77	0.67
1:A:519:ALA:HA	6:A:846:HOH:O	1.95	0.67
1:A:148:GLN:HB2	1:A:150:GLU:OE1	1.96	0.66
1:A:423:MET:HG2	1:A:528:TRP:CH2	2.30	0.66
1:A:544:ARG:O	1:A:545:LEU:HB2	1.97	0.65
1:A:540:PRO:HA	6:A:1012:HOH:O	1.97	0.65
1:A:267:THR:HA	1:A:272:GLN:O	1.96	0.65
1:A:23:ILE:HB	6:A:1008:HOH:O	1.97	0.65
1:A:461:GLN:HG2	1:A:541:ALA:O	1.97	0.65
4:A:800:PH7:HB1	4:A:800:PH7:C	2.27	0.64
1:A:485:VAL:HG11	6:A:1017:HOH:O	1.99	0.62
1:A:457:LEU:HG	6:A:915:HOH:O	1.99	0.62
1:A:455:GLU:HB3	6:A:915:HOH:O	2.00	0.62
1:A:539:ILE:HB	1:A:542:ALA:HB2	1.81	0.62
1:A:434:LEU:CD2	1:A:439:LEU:HD11	2.30	0.61
1:A:46:SER:HA	1:A:49:GLN:NE2	2.16	0.61
1:A:100:LYS:HB3	6:A:1009:HOH:O	2.00	0.61
1:A:372:VAL:HG12	1:A:373:ALA:N	2.14	0.61
1:A:414:MET:HA	1:A:414:MET:HE2	1.84	0.60
1:A:124:LYS:O	1:A:128:GLU:HG3	2.01	0.60
1:A:187:MET:CE	1:A:293:LEU:HD23	2.31	0.60
1:A:319:ASP:OD2	1:A:366:CYS:N	2.35	0.59
1:A:27:SER:HB3	1:A:400:ALA:HB2	1.82	0.59

*Continued on next page...*

*Continued from previous page...*

Atom-1	Atom-2	Interatomic distance (Å)	Clash overlap (Å)
1:A:390:VAL:HB	1:A:391:PRO:HD3	1.84	0.59
1:A:22:PRO:HG2	1:A:400:ALA:HB1	1.84	0.58
1:A:24:ASN:HB3	1:A:27:SER:OG	2.03	0.58
1:A:434:LEU:HD21	1:A:439:LEU:HD11	1.84	0.58
1:A:66:ASP:O	1:A:70:GLU:HG3	2.04	0.58
1:A:22:PRO:CG	1:A:400:ALA:HB1	2.34	0.58
1:A:548:SER:O	1:A:550:TRP:N	2.38	0.57
1:A:497:LEU:HD13	5:A:605:GOL:H12	1.86	0.57
1:A:349:PRO:HG2	6:A:930:HOH:O	2.04	0.57
1:A:366:CYS:HA	5:A:602:GOL:H31	1.87	0.57
1:A:455:GLU:HB2	6:A:850:HOH:O	2.05	0.57
1:A:187:MET:HG3	1:A:191:TYR:HB2	1.85	0.56
1:A:21:LEU:CD1	1:A:22:PRO:HD2	2.35	0.56
1:A:460:PRO:HG2	1:A:521:CYS:SG	2.45	0.56
1:A:508:ARG:CZ	1:A:530:VAL:HG11	2.36	0.56
1:A:508:ARG:HD2	1:A:526:PHE:HB2	1.87	0.56
1:A:513:SER:HB3	6:A:898:HOH:O	2.06	0.56
1:A:170:CYS:HA	1:A:173:MET:CE	2.37	0.55
1:A:79:LYS:HE2	1:A:244:ASP:OD2	2.07	0.55
1:A:236:GLU:OE1	1:A:280:ARG:NH2	2.31	0.55
1:A:419:LEU:HD22	6:A:1017:HOH:O	2.07	0.54
1:A:201:VAL:HG22	1:A:384:LEU:HG	1.90	0.54
1:A:237:GLU:HG3	1:A:257:THR:OG1	2.08	0.54
1:A:436:GLN:HB3	1:A:438:GLN:HE21	1.72	0.54
1:A:138:ILE:O	1:A:138:ILE:HG23	2.08	0.53
1:A:459:LEU:HB2	1:A:460:PRO:HD3	1.89	0.53
1:A:498:ARG:HD2	6:A:884:HOH:O	2.08	0.53
1:A:408:TRP:O	1:A:412:ILE:HG13	2.09	0.53
1:A:534:LEU:CD2	1:A:534:LEU:H	2.14	0.53
1:A:346:TYR:O	1:A:347:SER:HB3	2.08	0.52
1:A:545:LEU:HB3	6:A:886:HOH:O	2.09	0.52
1:A:187:MET:HE1	1:A:293:LEU:HA	1.92	0.52
1:A:546:LEU:HD12	1:A:547:LEU:N	2.25	0.52
1:A:367:SER:OG	5:A:602:GOL:H32	2.10	0.52
1:A:46:SER:HA	1:A:49:GLN:HE21	1.74	0.51
1:A:28:ASN:HA	1:A:31:LEU:O	2.10	0.51
1:A:223:CYS:HB2	6:A:1011:HOH:O	2.10	0.51
1:A:496:PRO:HG2	1:A:499:VAL:HG23	1.93	0.51
1:A:517:ARG:HA	1:A:520:ILE:CD1	2.41	0.51
1:A:434:LEU:HD11	1:A:511:LEU:CD2	2.41	0.51
1:A:527:ASN:HA	6:A:880:HOH:O	2.11	0.50

*Continued on next page...*

*Continued from previous page...*

Atom-1	Atom-2	Interatomic distance (Å)	Clash overlap (Å)
1:A:172:LYS:HE3	1:A:560:ILE:HD13	1.93	0.50
1:A:314:LEU:HB3	1:A:321:VAL:CG1	2.42	0.49
1:A:120:ARG:HD2	6:A:909:HOH:O	2.10	0.49
1:A:398:GLU:HG2	1:A:403:THR:HG21	1.92	0.49
1:A:537:THR:HB	1:A:538:PRO:HD2	1.94	0.49
1:A:497:LEU:CD1	5:A:605:GOL:H12	2.42	0.49
1:A:23:ILE:O	1:A:23:ILE:HG23	2.11	0.49
1:A:439:LEU:CD1	1:A:514:GLN:HE22	2.21	0.49
1:A:546:LEU:HD12	1:A:548:SER:H	1.77	0.49
1:A:439:LEU:HD12	1:A:514:GLN:NE2	2.23	0.49
1:A:313:MET:HG2	1:A:322:VAL:HG22	1.95	0.49
1:A:524:TYR:OH	1:A:537:THR:O	2.26	0.48
1:A:170:CYS:HA	1:A:173:MET:HE3	1.96	0.48
1:A:79:LYS:HG3	1:A:244:ASP:HB3	1.96	0.48
1:A:309:GLN:O	1:A:324:CYS:HB2	2.14	0.48
1:A:508:ARG:NH2	6:A:1026:HOH:O	2.45	0.48
1:A:217:PHE:CD1	1:A:336:LEU:HD11	2.49	0.48
4:A:800:PH7:HB1	4:A:800:PH7:N	2.29	0.48
1:A:548:SER:HB2	6:A:881:HOH:O	2.12	0.47
1:A:398:GLU:HB2	6:A:862:HOH:O	2.12	0.47
1:A:114:ARG:HA	1:A:117:ASN:HD22	1.79	0.47
1:A:270:LYS:NZ	6:A:926:HOH:O	2.47	0.47
1:A:141:LYS:HE3	6:A:970:HOH:O	2.15	0.47
1:A:376:ALA:C	1:A:378:GLY:H	2.17	0.47
1:A:148:GLN:HB2	1:A:150:GLU:CD	2.35	0.47
1:A:461:GLN:HB3	1:A:542:ALA:HA	1.96	0.47
1:A:375:ASP:C	1:A:375:ASP:OD1	2.52	0.47
1:A:419:LEU:HD21	1:A:423:MET:SD	2.55	0.47
1:A:41:THR:OG1	1:A:43:ARG:HB2	2.15	0.47
1:A:508:ARG:HD2	1:A:526:PHE:CB	2.45	0.46
1:A:30:LEU:O	1:A:494:VAL:HG22	2.15	0.46
1:A:416:ALA:N	1:A:417:PRO:HD2	2.31	0.46
1:A:43:ARG:HH11	1:A:43:ARG:HG3	1.81	0.46
1:A:150:GLU:HA	6:A:983:HOH:O	2.16	0.46
1:A:33:HIS:ND1	1:A:492:LEU:O	2.49	0.46
1:A:534:LEU:N	1:A:534:LEU:HD23	2.16	0.46
1:A:372:VAL:CG1	1:A:373:ALA:N	2.79	0.45
1:A:457:LEU:HD12	1:A:517:ARG:HH11	1.79	0.45
1:A:499:VAL:O	1:A:503:ARG:HG3	2.17	0.45
1:A:521:CYS:O	1:A:523:LYS:N	2.49	0.45
1:A:93:PRO:HA	1:A:94:PRO:HD3	1.90	0.45

*Continued on next page...*

*Continued from previous page...*

Atom-1	Atom-2	Interatomic distance (Å)	Clash overlap (Å)
1:A:436:GLN:CB	1:A:438:GLN:HE21	2.28	0.45
1:A:196:SER:H	1:A:199:GLN:HB2	1.82	0.45
1:A:516:GLY:HA2	6:A:916:HOH:O	2.16	0.45
1:A:182:LEU:HB3	1:A:183:PRO:HD3	1.98	0.45
1:A:314:LEU:HB3	1:A:321:VAL:HG12	1.98	0.45
1:A:469:LEU:HD23	1:A:472:PHE:HD1	1.82	0.45
1:A:366:CYS:C	5:A:602:GOL:H31	2.37	0.45
1:A:150:GLU:H	1:A:150:GLU:CD	2.19	0.44
1:A:333:ALA:O	1:A:337:ARG:HG3	2.17	0.44
1:A:514:GLN:HE21	1:A:518:ALA:CB	2.30	0.44
1:A:515:GLY:CA	1:A:519:ALA:HB2	2.41	0.44
1:A:416:ALA:HB3	1:A:467:HIS:CD2	2.52	0.44
1:A:434:LEU:HD23	1:A:439:LEU:HD11	2.00	0.44
1:A:512:LEU:C	1:A:514:GLN:H	2.20	0.44
1:A:465:ARG:HD3	1:A:547:LEU:HD12	1.98	0.44
1:A:102:GLY:O	1:A:103:TYR:CB	2.65	0.44
1:A:451:CYS:HB2	6:A:971:HOH:O	2.18	0.43
1:A:550:TRP:HB3	1:A:551:PHE:CD1	2.52	0.43
1:A:33:HIS:ND1	1:A:492:LEU:C	2.72	0.43
1:A:423:MET:HG2	1:A:528:TRP:CZ3	2.52	0.43
1:A:113:SER:O	1:A:116:VAL:HG22	2.19	0.43
1:A:548:SER:O	1:A:549:GLY:C	2.57	0.43
1:A:22:PRO:HG3	1:A:400:ALA:O	2.19	0.43
1:A:380:ARG:HH11	1:A:380:ARG:HG3	1.83	0.43
1:A:512:LEU:O	1:A:514:GLN:N	2.45	0.43
1:A:366:CYS:CA	5:A:602:GOL:H31	2.47	0.43
1:A:118:HIS:O	1:A:122:VAL:HG23	2.19	0.42
1:A:170:CYS:HA	1:A:173:MET:HE2	2.00	0.42
1:A:219:TYR:CD1	1:A:339:PHE:HE2	2.37	0.42
1:A:498:ARG:HB2	6:A:884:HOH:O	2.20	0.42
1:A:74:LYS:HD2	1:A:186:VAL:O	2.19	0.42
1:A:38:TYR:O	1:A:144:VAL:HA	2.19	0.42
1:A:82:LEU:HD13	5:A:601:GOL:H31	2.01	0.42
1:A:108:VAL:HG21	1:A:165:LEU:HD21	2.01	0.42
1:A:82:LEU:HD21	1:A:249:ALA:HB2	2.02	0.42
1:A:486:ALA:O	1:A:490:ARG:HG3	2.20	0.42
1:A:82:LEU:CD2	1:A:249:ALA:HB2	2.50	0.42
1:A:388:PRO:C	1:A:391:PRO:HD2	2.40	0.42
1:A:396:ALA:O	1:A:399:THR:HB	2.20	0.42
1:A:465:ARG:HD2	6:A:844:HOH:O	2.18	0.41
1:A:457:LEU:HD22	6:A:986:HOH:O	2.21	0.41

*Continued on next page...*

Continued from previous page...

Atom-1	Atom-2	Interatomic distance (Å)	Clash overlap (Å)
1:A:151:LYS:HD2	1:A:151:LYS:N	2.35	0.41
1:A:501:ARG:HG3	1:A:501:ARG:HH11	1.84	0.41
1:A:514:GLN:O	1:A:515:GLY:O	2.38	0.41
1:A:148:GLN:HB2	1:A:150:GLU:OE2	2.20	0.41
1:A:498:ARG:HG3	1:A:499:VAL:N	2.36	0.41
1:A:514:GLN:NE2	1:A:518:ALA:CB	2.84	0.41
1:A:546:LEU:CD1	1:A:548:SER:H	2.34	0.41
1:A:149:PRO:O	1:A:152:GLY:N	2.53	0.41
1:A:162:PHE:N	1:A:162:PHE:CD2	2.89	0.41
1:A:454:ILE:HG22	1:A:455:GLU:N	2.36	0.40
1:A:237:GLU:HG3	1:A:257:THR:CB	2.51	0.40
1:A:547:LEU:O	1:A:550:TRP:HB2	2.21	0.40
1:A:337:ARG:NH1	1:A:337:ARG:HB3	2.36	0.40
1:A:460:PRO:CG	1:A:521:CYS:SG	3.10	0.40
1:A:101:PHE:CD1	1:A:118:HIS:CE1	3.10	0.40

There are no symmetry-related clashes.

## 5.3 Torsion angles

### 5.3.1 Protein backbone

In the following table, the Percentiles column shows the percent Ramachandran outliers of the chain as a percentile score with respect to all X-ray entries followed by that with respect to entries of similar resolution.

The Analysed column shows the number of residues for which the backbone conformation was analysed, and the total number of residues.

Mol	Chain	Analysed	Favoured	Allowed	Outliers	Percentiles
1	A	562/577 (97%)	503 (90%)	45 (8%)	14 (2%)	<b>6</b> <b>10</b>

All (14) Ramachandran outliers are listed below:

Mol	Chain	Res	Type
1	A	22	PRO
1	A	103	TYR
1	A	515	GLY
1	A	545	LEU
1	A	549	GLY
1	A	437	GLU

Continued on next page...

*Continued from previous page...*

Mol	Chain	Res	Type
1	A	457	LEU
1	A	102	GLY
1	A	514	GLN
1	A	522	GLY
1	A	544	ARG
1	A	389	THR
1	A	540	PRO
1	A	23	ILE

### 5.3.2 Protein sidechains ⓘ

In the following table, the Percentiles column shows the percent sidechain outliers of the chain as a percentile score with respect to all X-ray entries followed by that with respect to entries of similar resolution.

The Analysed column shows the number of residues for which the sidechain conformation was analysed, and the total number of residues.

Mol	Chain	Analysed	Rotameric	Outliers	Percentiles
1	A	480/492 (98%)	472 (98%)	8 (2%)	66 87

All (8) residues with a non-rotameric sidechain are listed below:

Mol	Chain	Res	Type
1	A	112	SER
1	A	154	ARG
1	A	273	ASN
1	A	458	ASP
1	A	465	ARG
1	A	469	LEU
1	A	531	ARG
1	A	534	LEU

Some sidechains can be flipped to improve hydrogen bonding and reduce clashes. All (12) such sidechains are listed below:

Mol	Chain	Res	Type
1	A	49	GLN
1	A	117	ASN
1	A	142	ASN
1	A	148	GLN
1	A	184	GLN

*Continued on next page...*

*Continued from previous page...*

Mol	Chain	Res	Type
1	A	206	ASN
1	A	251	GLN
1	A	273	ASN
1	A	309	GLN
1	A	438	GLN
1	A	446	GLN
1	A	514	GLN

### 5.3.3 RNA ⓘ

There are no RNA molecules in this entry.

### 5.4 Non-standard residues in protein, DNA, RNA chains ⓘ

There are no non-standard protein/DNA/RNA residues in this entry.

### 5.5 Carbohydrates ⓘ

There are no carbohydrates in this entry.

### 5.6 Ligand geometry ⓘ

Of 7 ligands modelled in this entry, 1 is monoatomic - leaving 6 for Mogul analysis.

In the following table, the Counts columns list the number of bonds (or angles) for which Mogul statistics could be retrieved, the number of bonds (or angles) that are observed in the model and the number of bonds (or angles) that are defined in the Chemical Component Dictionary. The Link column lists molecule types, if any, to which the group is linked. The Z score for a bond length (or angle) is the number of standard deviations the observed value is removed from the expected value. A bond length (or angle) with  $|Z| > 2$  is considered an outlier worth inspection. RMSZ is the root-mean-square of all Z scores of the bond lengths (or angles).

Mol	Type	Chain	Res	Link	Bond lengths			Bond angles		
					Counts	RMSZ	# Z  > 2	Counts	RMSZ	# Z  > 2
5	GOL	A	600	-	5,5,5	0.93	0	5,5,5	1.74	2 (40%)
5	GOL	A	601	-	5,5,5	0.46	0	5,5,5	0.61	0
5	GOL	A	602	-	5,5,5	0.83	0	5,5,5	1.13	0
5	GOL	A	605	-	5,5,5	0.59	0	5,5,5	0.75	0
2	PO4	A	702	-	4,4,4	1.35	0	6,6,6	0.40	0
4	PH7	A	800	-	28,30,30	1.36	3 (10%)	32,40,40	0.80	0



In the following table, the Chirals column lists the number of chiral outliers, the number of chiral centers analysed, the number of these observed in the model and the number defined in the Chemical Component Dictionary. Similar counts are reported in the Torsion and Rings columns. '-' means no outliers of that kind were identified.

Mol	Type	Chain	Res	Link	Chirals	Torsions	Rings
5	GOL	A	600	-	-	0/4/4/4	0/0/0/0
5	GOL	A	601	-	-	0/4/4/4	0/0/0/0
5	GOL	A	602	-	-	0/4/4/4	0/0/0/0
5	GOL	A	605	-	-	0/4/4/4	0/0/0/0
2	PO4	A	702	-	-	0/0/0/0	0/0/0/0
4	PH7	A	800	-	-	0/16/20/20	0/3/3/3

All (3) bond length outliers are listed below:

Mol	Chain	Res	Type	Atoms	Z	Observed(Å)	Ideal(Å)
4	A	800	PH7	CB4-CB3	2.07	1.42	1.38
4	A	800	PH7	CC6-CC1	2.15	1.42	1.39
4	A	800	PH7	C2-N	3.18	1.47	1.40

All (2) bond angle outliers are listed below:

Mol	Chain	Res	Type	Atoms	Z	Observed(°)	Ideal(°)
5	A	600	GOL	O2-C2-C1	2.47	120.50	108.84
5	A	600	GOL	O1-C1-C2	2.70	123.68	110.07

There are no chirality outliers.

There are no torsion outliers.

There are no ring outliers.

4 monomers are involved in 9 short contacts:

Mol	Chain	Res	Type	Clashes	Symm-Clashes
5	A	601	GOL	1	0
5	A	602	GOL	4	0
5	A	605	GOL	2	0
4	A	800	PH7	2	0

## 5.7 Other polymers ⓘ

There are no such residues in this entry.

## 5.8 Polymer linkage issues

There are no chain breaks in this entry.

## 6 Fit of model and data ⓘ

### 6.1 Protein, DNA and RNA chains ⓘ

In the following table, the column labelled ‘#RSRZ> 2’ contains the number (and percentage) of RSRZ outliers, followed by percent RSRZ outliers for the chain as percentile scores relative to all X-ray entries and entries of similar resolution. The OWAB column contains the minimum, median, 95<sup>th</sup> percentile and maximum values of the occupancy-weighted average B-factor per residue. The column labelled ‘Q< 0.9’ lists the number of (and percentage) of residues with an average occupancy less than 0.9.

Mol	Chain	Analysed	<RSRZ>	#RSRZ>2	OWAB(Å <sup>2</sup> )	Q<0.9
1	A	564/577 (97%)	0.29	38 (6%) 19 19	27, 49, 73, 81	0

All (38) RSRZ outliers are listed below:

Mol	Chain	Res	Type	RSRZ
1	A	542	ALA	6.9
1	A	26	LEU	6.2
1	A	152	GLY	4.9
1	A	23	ILE	4.7
1	A	0	MET	4.6
1	A	532	THR	4.6
1	A	541	ALA	4.5
1	A	543	SER	4.1
1	A	544	ARG	3.9
1	A	404	PRO	3.7
1	A	546	LEU	3.6
1	A	512	LEU	3.6
1	A	16	ALA	3.3
1	A	509	ALA	3.3
1	A	15	ALA	3.2
1	A	535	LYS	3.1
1	A	540	PRO	3.0
1	A	506	SER	3.0
1	A	516	GLY	3.0
1	A	151	LYS	2.9
1	A	14	CYS	2.8
1	A	378	GLY	2.7
1	A	29	SER	2.6
1	A	548	SER	2.6
1	A	150	GLU	2.6
1	A	545	LEU	2.6
1	A	513	SER	2.6

*Continued on next page...*

*Continued from previous page...*

Mol	Chain	Res	Type	RSRZ
1	A	25	ALA	2.5
1	A	153	GLY	2.4
1	A	30	LEU	2.3
1	A	525	LEU	2.3
1	A	531	ARG	2.2
1	A	563	SER	2.2
1	A	402	HIS	2.1
1	A	92	THR	2.1
1	A	169	VAL	2.1
1	A	175	LEU	2.1
1	A	149	PRO	2.0

## 6.2 Non-standard residues in protein, DNA, RNA chains [i](#)

There are no non-standard protein/DNA/RNA residues in this entry.

## 6.3 Carbohydrates [i](#)

There are no carbohydrates in this entry.

## 6.4 Ligands [i](#)

In the following table, the Atoms column lists the number of modelled atoms in the group and the number defined in the chemical component dictionary. LLDF column lists the quality of electron density of the group with respect to its neighbouring residues in protein, DNA or RNA chains. The B-factors column lists the minimum, median, 95<sup>th</sup> percentile and maximum values of B factors of atoms in the group. The column labelled 'Q< 0.9' lists the number of atoms with occupancy less than 0.9.

Mol	Type	Chain	Res	Atoms	RSCC	RSR	LLDF	B-factors(Å <sup>2</sup> )	Q<0.9
5	GOL	A	600	6/6	0.66	0.28	3.90	59,60,60,60	0
2	PO4	A	702	5/5	0.93	0.16	2.45	71,72,73,74	0
5	GOL	A	601	6/6	0.88	0.17	2.02	69,69,70,70	0
5	GOL	A	605	6/6	0.74	0.21	0.75	67,68,69,70	0
4	PH7	A	800	28/28	0.95	0.15	-0.33	42,46,48,59	0
3	CL	A	701	1/1	0.97	0.25	-	56,56,56,56	1
5	GOL	A	602	6/6	0.67	0.27	-	62,65,66,67	0

## 6.5 Other polymers ⓘ

There are no such residues in this entry.