



Full wwPDB X-ray Structure Validation Report ⓘ

Feb 15, 2017 – 02:47 am GMT

PDB ID : 2YWC
Title : Crystal structure of GMP synthetase from *Thermus thermophilus* in complex with XMP
Authors : Baba, S.; Kanagawa, M.; Kuramitsu, S.; Yokoyama, S.; Sampei, G.; Kawai, G.; RIKEN Structural Genomics/Proteomics Initiative (RSGI)
Deposited on : 2007-04-20
Resolution : 2.20 Å(reported)

This is a Full wwPDB X-ray Structure Validation Report for a publicly released PDB entry.

We welcome your comments at validation@mail.wwpdb.org

A user guide is available at

<http://wwpdb.org/validation/2016/XrayValidationReportHelp>

with specific help available everywhere you see the ⓘ symbol.

The following versions of software and data (see [references ⓘ](#)) were used in the production of this report:

MolProbity	:	4.02b-467
Mogul	:	1.7.2 (RC1), CSD as538be (2017)
Xtriage (Phenix)	:	1.9-1692
EDS	:	trunk28620
Percentile statistics	:	20161228.v01 (using entries in the PDB archive December 28th 2016)
Refmac	:	5.8.0135
CCP4	:	6.5.0
Ideal geometry (proteins)	:	Engh & Huber (2001)
Ideal geometry (DNA, RNA)	:	Parkinson et al. (1996)
Validation Pipeline (wwPDB-VP)	:	recalc28949

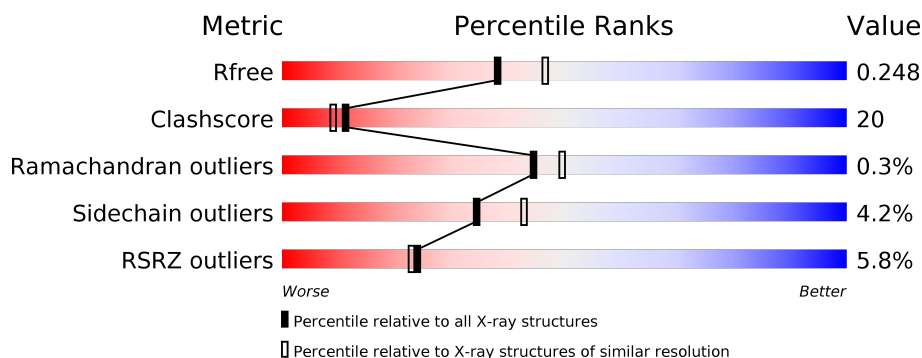
1 Overall quality at a glance

The following experimental techniques were used to determine the structure:

X-RAY DIFFRACTION

The reported resolution of this entry is 2.20 Å.

Percentile scores (ranging between 0-100) for global validation metrics of the entry are shown in the following graphic. The table shows the number of entries on which the scores are based.



Metric	Whole archive (#Entries)	Similar resolution (#Entries, resolution range(Å))
R_{free}	100719	4002 (2.20-2.20)
Clashscore	112137	4730 (2.20-2.20)
Ramachandran outliers	110173	4656 (2.20-2.20)
Sidechain outliers	110143	4657 (2.20-2.20)
RSRZ outliers	101464	4033 (2.20-2.20)

The table below summarises the geometric issues observed across the polymeric chains and their fit to the electron density. The red, orange, yellow and green segments on the lower bar indicate the fraction of residues that contain outliers for ≥ 3 , 2, 1 and 0 types of geometric quality criteria. A grey segment represents the fraction of residues that are not modelled. The numeric value for each fraction is indicated below the corresponding segment, with a dot representing fractions $\leq 5\%$. The upper red bar (where present) indicates the fraction of residues that have poor fit to the electron density. The numeric value is given above the bar.

Mol	Chain	Length	Quality of chain
1	A	503	<div> <div>3%</div> <div> <div></div> <div>67%</div> <div>25%</div> <div>• 6%</div> </div> </div>
1	B	503	<div> <div>3%</div> <div> <div></div> <div>59%</div> <div>30%</div> <div>• 7%</div> </div> </div>
1	C	503	<div> <div>4%</div> <div> <div></div> <div>63%</div> <div>28%</div> <div>• 7%</div> </div> </div>
1	D	503	<div> <div>11%</div> <div> <div></div> <div>50%</div> <div>39%</div> <div>• 7%</div> </div> </div>

The following table lists non-polymeric compounds, carbohydrate monomers and non-standard residues in protein, DNA, RNA chains that are outliers for geometric or electron-density-fit crite-

ria:

Mol	Type	Chain	Res	Chirality	Geometry	Clashes	Electron density
2	XMP	C	703	-	-	-	X

2 Entry composition [i](#)

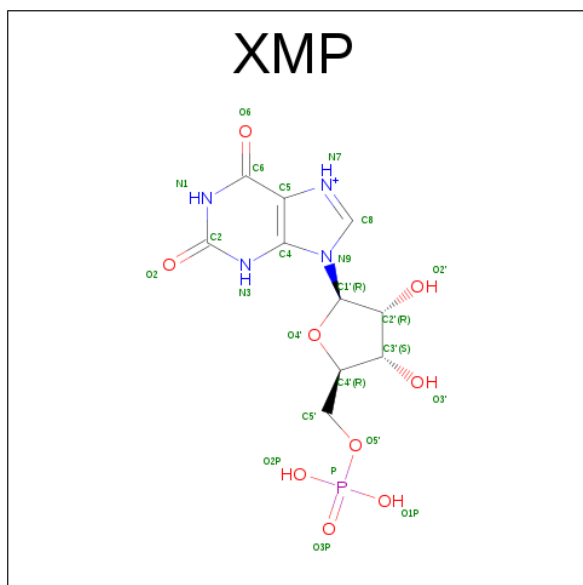
There are 3 unique types of molecules in this entry. The entry contains 15201 atoms, of which 0 are hydrogens and 0 are deuteriums.

In the tables below, the ZeroOcc column contains the number of atoms modelled with zero occupancy, the AltConf column contains the number of residues with at least one atom in alternate conformation and the Trace column contains the number of residues modelled with at most 2 atoms.

- Molecule 1 is a protein called GMP synthase [glutamine-hydrolyzing].

Mol	Chain	Residues	Atoms						ZeroOcc	AltConf	Trace
1	A	475	Total	C	N	O	S	Se	0	0	0
			3742	2395	665	676	1	5			
1	B	467	Total	C	N	O	S	Se	0	0	0
			3685	2360	657	662	1	5			
1	C	467	Total	C	N	O	S	Se	0	0	0
			3685	2360	657	662	1	5			
1	D	467	Total	C	N	O	S	Se	0	0	0
			3687	2361	660	660	1	5			

- Molecule 2 is XANTHOSINE-5'-MONOPHOSPHATE (three-letter code: XMP) (formula: $C_{10}H_{14}N_4O_9P$).



Mol	Chain	Residues	Atoms					ZeroOcc	AltConf
2	A	1	Total	C	N	O	P	0	0
			24	10	4	9	1		
2	B	1	Total	C	N	O	P	0	0
			24	10	4	9	1		

Continued on next page...

Continued from previous page...

Mol	Chain	Residues	Atoms					ZeroOcc	AltConf
2	C	1	Total	C	N	O	P	0	0
			24	10	4	9	1		
2	D	1	Total	C	N	O	P	0	0
			24	10	4	9	1		

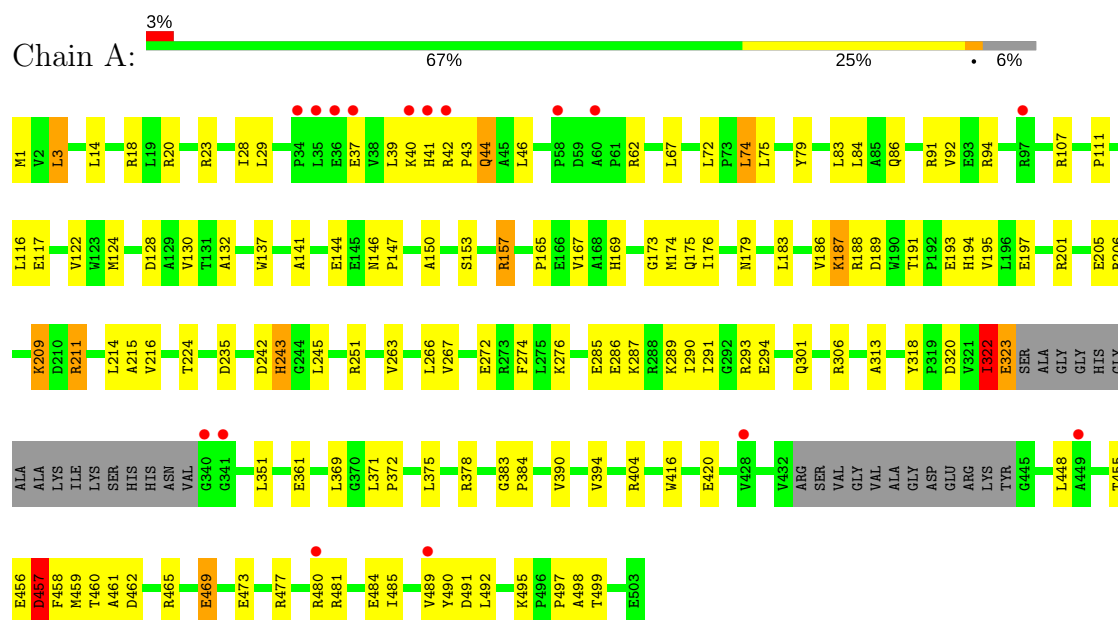
- Molecule 3 is water.

Mol	Chain	Residues	Atoms		ZeroOcc	AltConf
3	A	110	Total	O	0	0
			110	110		
3	B	66	Total	O	0	0
			66	66		
3	C	86	Total	O	0	0
			86	86		
3	D	44	Total	O	0	0
			44	44		

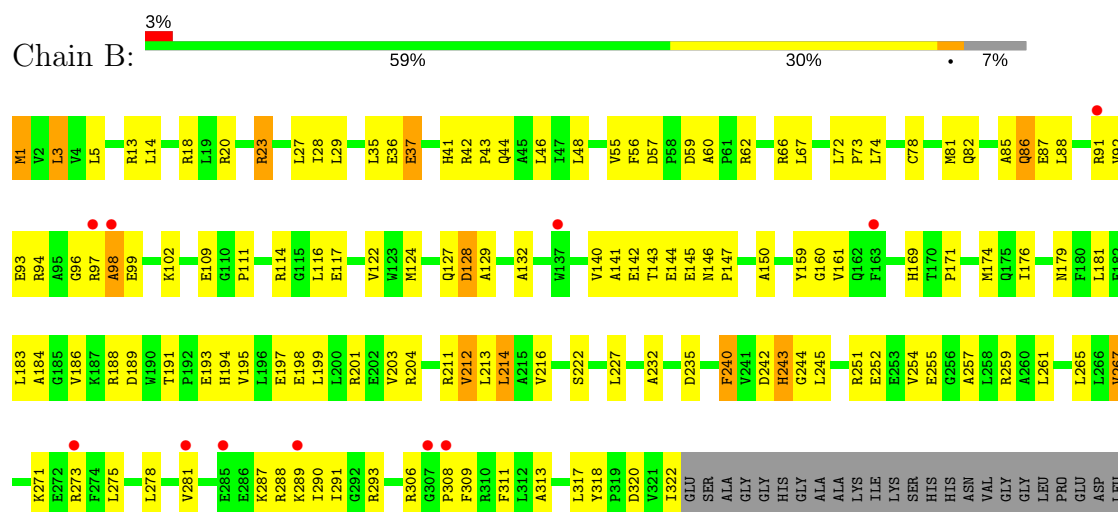
3 Residue-property plots

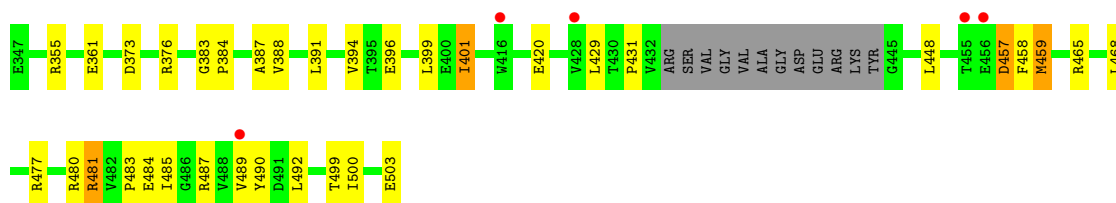
These plots are drawn for all protein, RNA and DNA chains in the entry. The first graphic for a chain summarises the proportions of the various outlier classes displayed in the second graphic. The second graphic shows the sequence view annotated by issues in geometry and electron density. Residues are color-coded according to the number of geometric quality criteria for which they contain at least one outlier: green = 0, yellow = 1, orange = 2 and red = 3 or more. A red dot above a residue indicates a poor fit to the electron density ($RSRZ > 2$). Stretches of 2 or more consecutive residues without any outlier are shown as a green connector. Residues present in the sample, but not in the model, are shown in grey.

• Molecule 1: GMP synthase [glutamine-hydrolyzing]

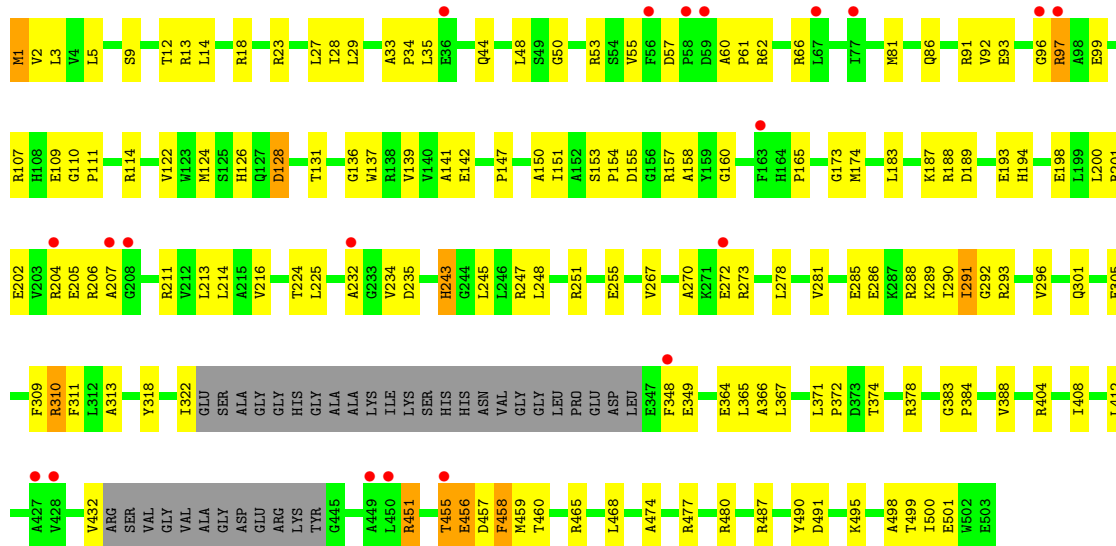


• Molecule 1: GMP synthase [glutamine-hydrolyzing]

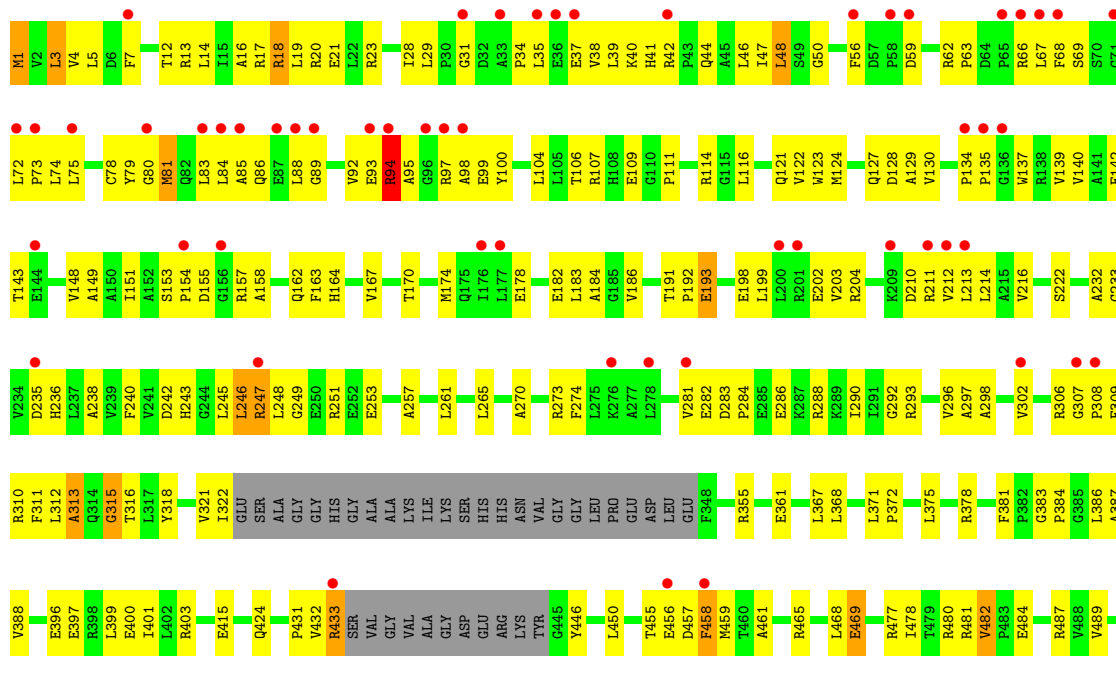




• Molecule 1: GMP synthase [glutamine-hydrolyzing]



• Molecule 1: GMP synthase [glutamine-hydrolyzing]



L492	P497	A498	T499	I500	E501	W502	E503
------	------	------	------	------	------	------	------

4 Data and refinement statistics

Property	Value	Source
Space group	C 1 2 1	Depositor
Cell constants a, b, c, α , β , γ	142.58Å 115.21Å 159.35Å 90.00° 93.21° 90.00°	Depositor
Resolution (Å)	31.82 – 2.20 31.82 – 2.21	Depositor EDS
% Data completeness (in resolution range)	87.9 (31.82-2.20) 97.2 (31.82-2.21)	Depositor EDS
R_{merge}	0.10	Depositor
R_{sym}	(Not available)	Depositor
$\langle I/\sigma(I) \rangle$ ¹	1.50 (at 2.20Å)	Xtriage
Refinement program	CNS 1.1	Depositor
R, R_{free}	0.236 , 0.278 0.250 , 0.248	Depositor DCC
R_{free} test set	6319 reflections (5.03%)	DCC
Wilson B-factor (Å ²)	40.5	Xtriage
Anisotropy	0.142	Xtriage
Bulk solvent k_{sol} (e/Å ³), B_{sol} (Å ²)	0.33 , 46.5	EDS
L-test for twinning ²	$\langle L \rangle = 0.50$, $\langle L^2 \rangle = 0.33$	Xtriage
Estimated twinning fraction	No twinning to report.	Xtriage
F_o, F_c correlation	0.94	EDS
Total number of atoms	15201	wwPDB-VP
Average B, all atoms (Å ²)	50.0	wwPDB-VP

Xtriage's analysis on translational NCS is as follows: *The largest off-origin peak in the Patterson function is 3.27% of the height of the origin peak. No significant pseudotranslation is detected.*

¹Intensities estimated from amplitudes.

²Theoretical values of $\langle |L| \rangle$, $\langle L^2 \rangle$ for acentric reflections are 0.5, 0.333 respectively for untwinned datasets, and 0.375, 0.2 for perfectly twinned datasets.

5 Model quality

5.1 Standard geometry

Bond lengths and bond angles in the following residue types are not validated in this section: XMP

The Z score for a bond length (or angle) is the number of standard deviations the observed value is removed from the expected value. A bond length (or angle) with $|Z| > 5$ is considered an outlier worth inspection. RMSZ is the root-mean-square of all Z scores of the bond lengths (or angles).

Mol	Chain	Bond lengths		Bond angles	
		RMSZ	$\# Z > 5$	RMSZ	$\# Z > 5$
1	A	0.41	0/3816	0.67	3/5168 (0.1%)
1	B	0.40	0/3758	0.63	3/5089 (0.1%)
1	C	0.40	0/3758	0.65	3/5089 (0.1%)
1	D	0.38	0/3760	0.68	7/5091 (0.1%)
All	All	0.40	0/15092	0.66	16/20437 (0.1%)

Chiral center outliers are detected by calculating the chiral volume of a chiral center and verifying if the center is modelled as a planar moiety or with the opposite hand. A planarity outlier is detected by checking planarity of atoms in a peptide group, atoms in a mainchain group or atoms of a sidechain that are expected to be planar.

Mol	Chain	#Chirality outliers	#Planarity outliers
1	A	0	2
1	B	0	5
1	C	0	2
1	D	0	5
All	All	0	14

There are no bond length outliers.

All (16) bond angle outliers are listed below:

Mol	Chain	Res	Type	Atoms	Z	Observed(°)	Ideal(°)
1	D	456	GLU	O-C-N	-10.15	106.46	122.70
1	A	457	ASP	O-C-N	-10.08	106.58	122.70
1	D	315	GLY	O-C-N	-9.38	107.70	122.70
1	C	456	GLU	O-C-N	-8.57	108.99	122.70
1	A	457	ASP	C-N-CA	7.55	140.58	121.70
1	D	456	GLU	CA-C-N	6.73	132.01	117.20
1	D	456	GLU	C-N-CA	6.70	138.46	121.70
1	B	457	ASP	C-N-CA	6.42	137.76	121.70

Continued on next page...

Continued from previous page...

Mol	Chain	Res	Type	Atoms	Z	Observed(°)	Ideal(°)
1	C	456	GLU	C-N-CA	6.17	137.11	121.70
1	C	456	GLU	CA-C-N	5.96	130.31	117.20
1	A	322	ILE	C-N-CA	-5.93	106.88	121.70
1	B	457	ASP	O-C-N	-5.80	113.42	122.70
1	D	313	ALA	O-C-N	5.78	131.96	122.70
1	D	94	ARG	O-C-N	-5.44	114.00	122.70
1	B	86	GLN	O-C-N	5.13	130.91	122.70
1	D	313	ALA	CA-C-N	-5.02	106.16	117.20

There are no chirality outliers.

All (14) planarity outliers are listed below:

Mol	Chain	Res	Type	Group
1	A	322	ILE	Peptide
1	A	457	ASP	Mainchain
1	B	128	ASP	Mainchain
1	B	129	ALA	Mainchain
1	B	23	ARG	Mainchain
1	B	459	MSE	Mainchain
1	B	85	ALA	Mainchain
1	C	128	ASP	Mainchain
1	C	458	PHE	Mainchain
1	D	129	ALA	Mainchain
1	D	23	ARG	Mainchain
1	D	315	GLY	Mainchain
1	D	458	PHE	Mainchain
1	D	94	ARG	Mainchain

5.2 Too-close contacts [i](#)

In the following table, the Non-H and H(model) columns list the number of non-hydrogen atoms and hydrogen atoms in the chain respectively. The H(added) column lists the number of hydrogen atoms added and optimized by MolProbity. The Clashes column lists the number of clashes within the asymmetric unit, whereas Symm-Clashes lists symmetry related clashes.

Mol	Chain	Non-H	H(model)	H(added)	Clashes	Symm-Clashes
1	A	3742	0	3812	135	0
1	B	3685	0	3761	141	0
1	C	3685	0	3761	130	0
1	D	3687	0	3768	207	0
2	A	24	0	12	1	0

Continued on next page...

Continued from previous page...

Mol	Chain	Non-H	H(model)	H(added)	Clashes	Symm-Clashes
2	B	24	0	12	3	0
2	C	24	0	12	4	0
2	D	24	0	12	2	0
3	A	110	0	0	3	0
3	B	66	0	0	2	0
3	C	86	0	0	3	0
3	D	44	0	0	1	0
All	All	15201	0	15150	597	0

The all-atom clashscore is defined as the number of clashes found per 1000 atoms (including hydrogen atoms). The all-atom clashscore for this structure is 20.

All (597) close contacts within the same asymmetric unit are listed below, sorted by their clash magnitude.

Atom-1	Atom-2	Interatomic distance (Å)	Clash overlap (Å)
1:A:74:LEU:C	1:A:74:LEU:HD23	1.66	1.16
1:B:401:ILE:CD1	1:B:484:GLU:HG3	1.75	1.15
1:A:74:LEU:C	1:A:74:LEU:CD2	2.13	1.13
1:A:74:LEU:HD23	1:A:75:LEU:N	1.64	1.12
1:D:56:PHE:HZ	1:D:92:VAL:O	1.35	1.09
1:B:401:ILE:HD13	1:B:484:GLU:CG	1.82	1.08
1:C:310:ARG:HH11	1:C:310:ARG:HG3	0.99	1.07
1:C:310:ARG:HH11	1:C:310:ARG:CG	1.67	1.06
1:C:1:MSE:HE1	1:C:3:LEU:HD13	1.37	1.03
1:D:457:ASP:OD2	1:D:459:MSE:HE2	1.60	1.01
1:A:157:ARG:HH11	1:A:157:ARG:HG2	1.24	1.01
1:D:281:VAL:HG21	1:D:290:ILE:HD12	1.44	0.98
1:A:318:TYR:CE2	1:A:322:ILE:HD11	2.02	0.94
1:C:3:LEU:HD21	1:C:29:LEU:HD12	1.47	0.93
1:D:281:VAL:HG21	1:D:290:ILE:CD1	1.97	0.93
1:C:1:MSE:CE	1:C:3:LEU:HD13	1.99	0.92
1:C:111:PRO:HB2	1:C:183:LEU:HD21	1.53	0.91
1:A:74:LEU:O	1:A:74:LEU:HD22	1.69	0.91
1:D:243:HIS:HD2	1:D:245:LEU:H	1.18	0.90
1:B:111:PRO:HB2	1:B:183:LEU:HD21	1.54	0.89
1:C:310:ARG:NH1	1:C:310:ARG:HG3	1.79	0.89
1:C:301:GLN:O	1:C:305:GLU:HG2	1.72	0.88
1:D:63:PRO:HB2	1:D:67:LEU:HD22	1.55	0.88
1:A:157:ARG:NH1	1:A:157:ARG:HG2	1.81	0.88
1:D:56:PHE:CZ	1:D:92:VAL:O	2.26	0.87
1:D:153:SER:HB3	1:D:158:ALA:HB3	1.55	0.87

Continued on next page...

Continued from previous page...

Atom-1	Atom-2	Interatomic distance (Å)	Clash overlap (Å)
1:B:14:LEU:HD22	1:B:18:ARG:HH12	1.40	0.86
1:A:211:ARG:HG3	1:A:235:ASP:OD2	1.75	0.86
1:D:68:PHE:CD2	1:D:88:LEU:HD21	2.12	0.85
1:A:117:GLU:HB2	1:C:248:LEU:HG	1.59	0.85
1:C:457:ASP:O	1:C:459:MSE:HG3	1.77	0.84
1:C:12:THR:HG22	1:C:28:ILE:HD13	1.58	0.84
1:A:1:MSE:HE1	1:A:3:LEU:HD23	1.59	0.83
1:A:169:HIS:CD2	3:A:797:HOH:O	2.31	0.82
1:A:448:LEU:HB2	1:A:485:ILE:HD13	1.61	0.81
1:D:457:ASP:OD1	1:D:459:MSE:HB3	1.79	0.81
1:D:50:GLY:HA2	1:D:79:TYR:HB3	1.62	0.80
1:A:157:ARG:HH11	1:A:157:ARG:CG	1.94	0.80
1:A:74:LEU:C	1:A:74:LEU:HD22	2.00	0.80
1:A:193:GLU:O	1:A:197:GLU:HG2	1.82	0.79
1:B:98:ALA:HB2	1:B:127:GLN:NE2	1.97	0.78
1:C:200:LEU:O	1:C:204:ARG:HG3	1.84	0.78
1:C:1:MSE:N	1:C:44:GLN:HE21	1.81	0.78
1:B:278:LEU:O	1:B:281:VAL:HG12	1.83	0.77
1:C:1:MSE:H2	1:C:44:GLN:HE21	1.29	0.77
1:A:74:LEU:O	1:A:74:LEU:CD2	2.29	0.77
1:B:401:ILE:HD13	1:B:484:GLU:HG3	0.87	0.75
1:D:214:LEU:HB3	1:D:313:ALA:HB3	1.68	0.75
1:C:35:LEU:HD22	1:C:66:ARG:HB2	1.69	0.75
1:D:318:TYR:CE2	1:D:322:ILE:HD11	2.20	0.75
1:C:318:TYR:CE2	1:C:322:ILE:HD11	2.21	0.75
1:A:211:ARG:HG3	1:A:235:ASP:CG	2.07	0.75
1:A:480:ARG:HD3	1:A:481:ARG:NH1	2.02	0.75
1:A:272:GLU:HG3	1:A:276:LYS:HE2	1.67	0.74
1:C:14:LEU:HD11	1:C:18:ARG:NH2	2.02	0.74
1:B:55:VAL:HG11	1:B:82:GLN:HB2	1.70	0.74
1:D:4:VAL:HB	1:D:28:ILE:HD13	1.69	0.74
1:A:455:THR:HG23	1:A:460:THR:O	1.87	0.74
1:D:246:LEU:H	1:D:246:LEU:HD12	1.51	0.73
1:A:489:VAL:HB	1:B:489:VAL:HG13	1.71	0.73
1:B:5:LEU:HD11	1:B:67:LEU:HD11	1.69	0.73
1:D:88:LEU:O	1:D:135:PRO:HD2	1.89	0.72
1:A:111:PRO:HB2	1:A:183:LEU:HD21	1.70	0.72
1:A:37:GLU:O	1:A:40:LYS:HG2	1.90	0.72
1:A:62:ARG:HH22	1:A:86:GLN:HE21	1.37	0.71
1:D:73:PRO:HA	1:D:157:ARG:HG2	1.72	0.71
1:C:310:ARG:HD3	1:C:349:GLU:OE1	1.91	0.70

Continued on next page...

Continued from previous page...

Atom-1	Atom-2	Interatomic distance (Å)	Clash overlap (Å)
1:B:204:ARG:HH21	1:B:232:ALA:HA	1.56	0.70
1:B:142:GLU:HG2	1:B:147:PRO:O	1.92	0.70
1:D:375:LEU:HD23	1:D:378:ARG:HD2	1.72	0.70
1:A:74:LEU:HD23	1:A:75:LEU:CA	2.21	0.69
1:C:107:ARG:HH11	1:C:107:ARG:HB3	1.57	0.69
1:D:56:PHE:CZ	1:D:92:VAL:HG23	2.28	0.69
1:B:259:ARG:NH2	3:B:760:HOH:O	2.25	0.69
1:D:122:VAL:HG23	1:D:124:MSE:HG2	1.74	0.69
1:D:247:ARG:HD2	1:D:381:PHE:CE1	2.28	0.69
1:D:243:HIS:CD2	1:D:245:LEU:H	2.08	0.68
1:D:242:ASP:OD2	1:D:251:ARG:HD3	1.93	0.68
1:A:469:GLU:HG3	1:D:469:GLU:HG3	1.75	0.68
1:C:292:GLY:O	1:C:296:VAL:HG23	1.93	0.68
1:B:394:VAL:HG13	1:B:399:LEU:HD13	1.75	0.68
1:D:457:ASP:CG	1:D:459:MSE:HB3	2.14	0.68
1:A:216:VAL:HG13	3:A:704:HOH:O	1.93	0.67
1:B:477:ARG:HD2	1:B:481:ARG:CZ	2.24	0.67
1:C:57:ASP:HB3	1:C:60:ALA:HB2	1.77	0.67
1:D:56:PHE:HZ	1:D:92:VAL:C	1.97	0.67
1:B:457:ASP:OD2	1:B:459:MSE:HB2	1.94	0.67
1:B:500:ILE:HD12	2:B:702:XMP:H5'1	1.75	0.67
1:C:153:SER:HB3	1:C:158:ALA:HB3	1.77	0.67
1:D:56:PHE:CD2	1:D:94:ARG:HG3	2.29	0.67
1:A:291:ILE:HD12	1:A:384:PRO:CB	2.25	0.67
1:D:247:ARG:HD2	1:D:381:PHE:CD1	2.30	0.67
1:B:477:ARG:HD3	1:B:480:ARG:NH2	2.09	0.66
1:C:111:PRO:HA	1:C:114:ARG:HG3	1.76	0.66
1:D:107:ARG:HH22	1:D:139:VAL:HG23	1.60	0.66
1:C:288:ARG:HH11	1:C:288:ARG:HG2	1.61	0.66
1:C:96:GLY:C	1:C:97:ARG:HD3	2.15	0.66
1:D:321:VAL:HG12	1:D:321:VAL:O	1.95	0.66
1:A:285:GLU:O	1:A:289:LYS:HG2	1.95	0.66
1:A:44:GLN:HG3	1:A:187:LYS:HE2	1.77	0.66
1:A:416:TRP:NE1	1:A:473:GLU:OE1	2.29	0.66
1:C:141:ALA:HB3	1:C:150:ALA:HB3	1.78	0.66
1:C:245:LEU:CD1	1:C:291:ILE:CD1	2.74	0.65
1:D:153:SER:HB2	1:D:154:PRO:HD2	1.79	0.65
1:D:273:ARG:NH2	1:D:297:ALA:HB3	2.11	0.65
1:B:257:ALA:O	1:B:261:LEU:HD13	1.96	0.65
1:C:198:GLU:HG2	1:C:202:GLU:OE2	1.97	0.65
1:C:310:ARG:CD	1:C:349:GLU:OE1	2.45	0.65

Continued on next page...

Continued from previous page...

Atom-1	Atom-2	Interatomic distance (Å)	Clash overlap (Å)
1:D:111:PRO:HA	1:D:114:ARG:HG3	1.77	0.65
1:D:399:LEU:O	1:D:403:ARG:HB2	1.97	0.65
1:B:214:LEU:HB3	1:B:313:ALA:HB3	1.78	0.64
1:C:243:HIS:HD2	1:C:245:LEU:H	1.45	0.64
1:C:499:THR:O	1:D:487:ARG:NH2	2.31	0.64
1:A:18:ARG:HD2	1:A:174:MSE:SE	2.48	0.64
1:B:14:LEU:HD22	1:B:18:ARG:NH1	2.12	0.64
1:A:455:THR:HG22	1:A:456:GLU:N	2.13	0.64
1:B:141:ALA:HB3	1:B:150:ALA:HB3	1.79	0.64
1:D:288:ARG:HE	1:D:388:VAL:HG11	1.63	0.64
1:B:499:THR:HB	2:B:702:XMP:O1P	1.98	0.64
1:C:371:LEU:HD12	1:C:372:PRO:HD2	1.80	0.64
1:D:381:PHE:HZ	1:D:386:LEU:HD13	1.63	0.63
1:A:455:THR:HG21	1:A:458:PHE:HA	1.80	0.63
1:D:19:LEU:HD11	1:D:47:ILE:HD12	1.80	0.63
1:B:94:ARG:HA	1:B:128:ASP:OD1	1.99	0.63
1:D:85:ALA:HA	1:D:134:PRO:HG3	1.80	0.63
1:C:310:ARG:NH1	1:C:310:ARG:CG	2.39	0.63
1:D:63:PRO:CB	1:D:67:LEU:HD22	2.28	0.63
1:D:56:PHE:HE2	1:D:93:GLU:C	2.01	0.63
1:B:477:ARG:HD3	1:B:480:ARG:HH21	1.63	0.62
1:D:21:GLU:OE2	1:D:174:MSE:HE1	1.99	0.62
1:C:243:HIS:CD2	1:C:245:LEU:H	2.18	0.62
1:B:199:LEU:O	1:B:203:VAL:HG23	1.99	0.62
1:C:500:ILE:HD12	2:C:703:XMP:H5'1	1.81	0.62
1:D:478:ILE:O	1:D:482:VAL:HG13	1.99	0.62
1:B:373:ASP:OD1	1:B:376:ARG:NH1	2.33	0.62
1:A:306:ARG:HG3	1:A:306:ARG:HH11	1.64	0.62
1:B:289:LYS:O	1:B:293:ARG:HG3	2.00	0.62
1:D:62:ARG:HH22	1:D:86:GLN:NE2	1.97	0.62
1:B:275:LEU:HD21	1:B:396:GLU:OE1	2.00	0.62
1:C:211:ARG:HD2	1:C:235:ASP:OD2	2.00	0.61
1:D:214:LEU:HD12	1:D:214:LEU:O	2.01	0.61
1:B:18:ARG:HD3	1:B:174:MSE:SE	2.50	0.61
1:D:212:VAL:HG22	1:D:235:ASP:O	2.01	0.61
1:B:23:ARG:HB2	1:B:188:ARG:HB3	1.82	0.61
1:A:122:VAL:HG23	1:A:124:MSE:HG2	1.83	0.61
1:D:211:ARG:HG2	1:D:235:ASP:OD1	2.01	0.60
1:D:62:ARG:HH22	1:D:86:GLN:HE21	1.49	0.60
1:B:477:ARG:HD2	1:B:481:ARG:NH1	2.17	0.60
1:D:284:PRO:HB3	1:D:503:GLU:HB2	1.81	0.60

Continued on next page...

Continued from previous page...

Atom-1	Atom-2	Interatomic distance (Å)	Clash overlap (Å)
1:A:175:GLN:HE21	1:A:179:ASN:HD21	1.50	0.60
1:D:5:LEU:HA	1:D:29:LEU:O	2.01	0.60
1:D:73:PRO:HG3	1:D:157:ARG:HH11	1.65	0.60
1:D:79:TYR:O	1:D:83:LEU:HG	2.02	0.60
1:A:286:GLU:O	1:A:290:ILE:HG13	2.01	0.60
1:A:62:ARG:HH12	1:A:86:GLN:NE2	1.99	0.60
1:B:97:ARG:O	1:B:99:GLU:HG2	2.01	0.60
1:A:44:GLN:OE1	1:A:187:LYS:HD2	2.02	0.60
1:D:316:THR:O	1:D:355:ARG:HA	2.00	0.60
1:D:288:ARG:HE	1:D:388:VAL:CG1	2.15	0.59
1:C:93:GLU:OE2	1:C:131:THR:HG21	2.02	0.59
1:D:106:THR:HG22	1:D:142:GLU:O	2.03	0.59
1:D:38:VAL:HG23	1:D:39:LEU:N	2.17	0.59
1:C:247:ARG:HD2	3:C:719:HOH:O	2.02	0.59
1:D:34:PRO:HD2	1:D:37:GLU:CD	2.24	0.58
1:D:40:LYS:HG3	1:D:41:HIS:CD2	2.39	0.58
1:C:136:GLY:O	1:C:154:PRO:HG3	2.03	0.58
1:C:198:GLU:HG3	1:C:201:ARG:HH12	1.67	0.58
1:B:81:MSE:SE	1:B:160:GLY:C	2.92	0.58
1:A:243:HIS:CD2	1:A:245:LEU:H	2.21	0.58
1:B:143:THR:HG23	1:B:146:ASN:H	1.69	0.58
1:B:216:VAL:HA	1:B:222:SER:HB3	1.85	0.58
1:C:1:MSE:SE	1:C:1:MSE:C	2.92	0.58
1:D:1:MSE:SE	1:D:1:MSE:O	2.71	0.58
1:D:56:PHE:CZ	1:D:93:GLU:HA	2.38	0.58
1:D:68:PHE:HD2	1:D:88:LEU:HD21	1.68	0.58
1:D:199:LEU:O	1:D:203:VAL:HG12	2.04	0.58
1:D:396:GLU:O	1:D:400:GLU:HG3	2.04	0.58
1:A:293:ARG:HG2	1:A:293:ARG:HH11	1.67	0.57
1:B:3:LEU:HD11	1:B:29:LEU:HD12	1.86	0.57
1:D:482:VAL:HG22	1:D:482:VAL:O	2.03	0.57
1:A:301:GLN:HG3	3:A:778:HOH:O	2.04	0.57
1:B:243:HIS:CD2	1:B:243:HIS:H	2.21	0.57
1:C:122:VAL:HG23	1:C:124:MSE:HG2	1.85	0.57
1:C:224:THR:OG1	1:C:366:ALA:HB2	2.03	0.57
1:D:211:ARG:HH12	1:D:307:GLY:HA3	1.70	0.57
1:B:35:LEU:HD22	1:B:66:ARG:HB2	1.86	0.57
1:D:216:VAL:HA	1:D:222:SER:HB2	1.86	0.57
1:D:257:ALA:O	1:D:261:LEU:HD23	2.04	0.57
1:B:109:GLU:O	1:B:140:VAL:HB	2.05	0.57
1:B:287:LYS:O	1:B:291:ILE:HG12	2.05	0.57

Continued on next page...

Continued from previous page...

Atom-1	Atom-2	Interatomic distance (Å)	Clash overlap (Å)
1:D:281:VAL:HG13	1:D:286:GLU:HG2	1.85	0.56
1:B:1:MSE:HE2	1:B:27:LEU:HD12	1.87	0.56
1:C:13:ARG:HD3	3:C:728:HOH:O	2.05	0.56
1:A:378:ARG:HH11	1:A:378:ARG:HB3	1.69	0.56
1:C:1:MSE:HE1	1:C:3:LEU:CD1	2.25	0.56
1:C:432:VAL:HG13	1:C:432:VAL:O	2.05	0.56
1:C:455:THR:HG23	1:C:460:THR:O	2.05	0.56
1:D:310:ARG:HH11	1:D:310:ARG:HG2	1.70	0.56
1:A:20:ARG:HD3	1:A:361:GLU:OE2	2.05	0.56
1:B:244:GLY:HA3	1:B:271:LYS:HG2	1.87	0.56
1:A:266:LEU:HD23	1:A:266:LEU:C	2.26	0.56
1:A:318:TYR:CZ	1:A:322:ILE:HD11	2.40	0.56
1:C:206:ARG:HH11	1:C:206:ARG:HG2	1.71	0.56
1:B:55:VAL:HG11	1:B:82:GLN:CB	2.36	0.56
1:D:35:LEU:HD22	1:D:66:ARG:HB2	1.88	0.56
1:D:371:LEU:HD12	1:D:372:PRO:HD2	1.87	0.56
1:B:420:GLU:HG2	3:B:703:HOH:O	2.06	0.56
1:D:212:VAL:HG12	1:D:311:PHE:HB2	1.88	0.55
1:D:56:PHE:HD2	1:D:94:ARG:HG3	1.70	0.55
1:D:211:ARG:NH2	1:D:308:PRO:HD2	2.21	0.55
1:B:62:ARG:HH12	1:B:86:GLN:HE22	1.54	0.55
1:C:53:ARG:NH1	1:C:61:PRO:HD3	2.22	0.55
1:A:390:VAL:HG23	1:A:390:VAL:O	2.05	0.55
1:D:499:THR:HB	2:D:704:XMP:O1P	2.06	0.55
1:B:56:PHE:HZ	1:B:92:VAL:O	1.90	0.55
1:A:209:LYS:HB3	1:A:209:LYS:NZ	2.21	0.55
1:A:455:THR:HG22	1:A:457:ASP:H	1.72	0.55
1:B:143:THR:CG2	1:B:146:ASN:H	2.19	0.55
1:C:137:TRP:CD1	1:C:154:PRO:HD3	2.42	0.54
1:A:477:ARG:HG3	1:A:481:ARG:NH1	2.22	0.54
1:C:142:GLU:HG2	1:C:147:PRO:O	2.07	0.54
1:A:167:VAL:HG13	1:A:169:HIS:H	1.72	0.54
1:D:198:GLU:HG3	1:D:202:GLU:OE2	2.08	0.54
1:D:273:ARG:HH22	1:D:297:ALA:HB3	1.72	0.54
1:A:322:ILE:O	1:A:322:ILE:HG22	2.07	0.54
1:D:3:LEU:HD21	1:D:29:LEU:HB2	1.88	0.54
1:A:499:THR:HB	2:A:701:XMP:O2P	2.07	0.54
1:C:3:LEU:HD12	1:C:27:LEU:O	2.07	0.54
1:D:56:PHE:CE2	1:D:93:GLU:HA	2.43	0.54
1:D:214:LEU:HD12	1:D:238:ALA:HA	1.89	0.54
1:D:401:ILE:HD13	1:D:484:GLU:CB	2.38	0.54

Continued on next page...

Continued from previous page...

Atom-1	Atom-2	Interatomic distance (Å)	Clash overlap (Å)
1:D:500:ILE:HG13	2:D:704:XMP:H5'1	1.90	0.53
1:B:198:GLU:HA	1:B:201:ARG:HH12	1.73	0.53
1:A:187:LYS:H	1:A:187:LYS:HD3	1.73	0.53
1:C:53:ARG:HH11	1:C:61:PRO:HD3	1.73	0.53
1:D:104:LEU:O	1:D:143:THR:HG22	2.09	0.53
1:D:78:CYS:C	1:D:80:GLY:H	2.11	0.53
1:D:480:ARG:HH11	1:D:480:ARG:HG3	1.73	0.53
1:A:492:LEU:HD11	1:B:490:TYR:HB2	1.90	0.53
1:C:457:ASP:C	1:C:457:ASP:OD1	2.47	0.53
1:C:499:THR:HB	2:C:703:XMP:O2P	2.08	0.53
1:B:144:GLU:HG3	1:B:145:GLU:OE2	2.08	0.53
1:B:193:GLU:OE1	1:B:193:GLU:N	2.38	0.53
1:B:143:THR:HG22	1:B:146:ASN:HB3	1.91	0.53
1:C:1:MSE:SE	1:C:2:VAL:N	2.91	0.53
1:D:1:MSE:N	1:D:44:GLN:HE21	2.07	0.53
1:A:141:ALA:HB3	1:A:150:ALA:HB3	1.92	0.52
1:B:114:ARG:HG3	1:B:114:ARG:HH11	1.74	0.52
1:B:211:ARG:HD3	1:B:308:PRO:O	2.08	0.52
1:A:175:GLN:HE21	1:A:179:ASN:ND2	2.07	0.52
1:B:35:LEU:HB3	1:B:66:ARG:HH21	1.75	0.52
1:D:3:LEU:HD11	1:D:29:LEU:HD12	1.91	0.52
1:A:28:ILE:HD12	1:A:322:ILE:HD13	1.90	0.52
1:A:378:ARG:NH1	1:A:378:ARG:HB3	2.24	0.52
1:D:122:VAL:CG2	1:D:124:MSE:HG2	2.38	0.52
1:D:88:LEU:CB	1:D:134:PRO:HB3	2.39	0.52
1:D:245:LEU:HD13	1:D:387:ALA:HB2	1.92	0.52
1:B:198:GLU:HA	1:B:201:ARG:NH1	2.25	0.52
1:D:85:ALA:HA	1:D:134:PRO:CG	2.40	0.52
1:A:14:LEU:HD11	1:A:18:ARG:NH2	2.24	0.52
1:D:3:LEU:HD21	1:D:29:LEU:HD12	1.91	0.52
1:A:457:ASP:C	1:A:457:ASP:OD2	2.49	0.52
1:D:211:ARG:HH22	1:D:308:PRO:HD2	1.75	0.52
1:D:292:GLY:O	1:D:296:VAL:HG23	2.10	0.52
1:C:97:ARG:N	1:C:97:ARG:HD3	2.24	0.51
1:A:495:LYS:HB2	1:A:498:ALA:O	2.09	0.51
1:D:12:THR:HG23	1:D:28:ILE:HD12	1.93	0.51
1:A:211:ARG:CG	1:A:235:ASP:OD2	2.54	0.51
1:A:455:THR:OG1	1:A:461:ALA:CB	2.59	0.51
1:D:270:ALA:O	1:D:274:PHE:HD2	1.94	0.51
1:A:187:LYS:HD3	1:A:187:LYS:N	2.25	0.51
1:A:243:HIS:HE1	1:A:383:GLY:O	1.94	0.51

Continued on next page...

Continued from previous page...

Atom-1	Atom-2	Interatomic distance (Å)	Clash overlap (Å)
1:C:288:ARG:NH1	1:C:288:ARG:HG2	2.25	0.51
1:B:193:GLU:O	1:B:197:GLU:HG3	2.10	0.51
1:D:431:PRO:HG3	1:D:446:TYR:HE1	1.74	0.51
1:D:84:LEU:HD21	1:D:137:TRP:CZ3	2.46	0.51
1:B:87:GLU:O	1:B:88:LEU:HD23	2.10	0.51
1:B:42:ARG:N	1:B:43:PRO:HD3	2.26	0.50
1:B:5:LEU:CD1	1:B:67:LEU:HD11	2.39	0.50
1:C:53:ARG:HD2	1:C:61:PRO:HD2	1.94	0.50
1:D:3:LEU:HD23	1:D:4:VAL:N	2.26	0.50
1:B:448:LEU:HB2	1:B:485:ILE:HD12	1.93	0.50
1:D:211:ARG:HB3	1:D:309:PHE:HD1	1.76	0.50
1:B:78:CYS:O	1:B:82:GLN:HG2	2.10	0.50
1:C:107:ARG:HH12	1:C:142:GLU:HG3	1.77	0.50
1:C:81:MSE:HE3	1:C:151:ILE:HG12	1.94	0.50
1:A:448:LEU:CB	1:A:485:ILE:HD13	2.39	0.50
1:B:181:LEU:CD2	1:B:186:VAL:HG21	2.41	0.50
1:B:271:LYS:O	1:B:275:LEU:HD13	2.11	0.50
1:B:181:LEU:HD22	1:B:186:VAL:HG21	1.94	0.50
1:D:7:PHE:CE1	1:D:31:GLY:HA3	2.47	0.50
1:D:78:CYS:C	1:D:80:GLY:N	2.64	0.50
1:C:281:VAL:HG21	1:C:290:ILE:CD1	2.42	0.49
1:C:455:THR:HG22	1:C:456:GLU:H	1.77	0.49
1:D:56:PHE:CE2	1:D:93:GLU:CA	2.95	0.49
1:B:288:ARG:NH1	2:B:702:XMP:O6	2.44	0.49
1:C:109:GLU:CD	1:C:110:GLY:H	2.15	0.49
1:C:408:ILE:O	1:C:412:LEU:HD13	2.13	0.49
1:D:130:VAL:HG23	1:D:130:VAL:O	2.11	0.49
1:D:249:GLY:O	1:D:253:GLU:HG3	2.12	0.49
1:B:48:LEU:N	1:B:48:LEU:HD12	2.28	0.49
1:C:281:VAL:HG13	1:C:286:GLU:HG2	1.94	0.49
1:D:191:THR:HB	1:D:193:GLU:OE1	2.13	0.49
1:D:211:ARG:HG2	1:D:235:ASP:CG	2.32	0.49
1:D:457:ASP:OD2	1:D:459:MSE:CE	2.48	0.49
1:D:48:LEU:HD22	1:D:74:LEU:HD21	1.94	0.49
1:A:371:LEU:HD12	1:A:372:PRO:HD2	1.95	0.49
1:C:245:LEU:HD11	1:C:291:ILE:CD1	2.40	0.49
1:C:288:ARG:NH1	1:C:388:VAL:HG11	2.28	0.49
1:C:245:LEU:CD1	1:C:291:ILE:HD13	2.42	0.49
1:C:495:LYS:HB2	1:C:498:ALA:O	2.13	0.49
1:A:214:LEU:HD12	1:A:215:ALA:N	2.28	0.49
1:A:242:ASP:OD2	1:A:251:ARG:HD3	2.13	0.49

Continued on next page...

Continued from previous page...

Atom-1	Atom-2	Interatomic distance (Å)	Clash overlap (Å)
1:A:490:TYR:HB2	1:B:492:LEU:HD11	1.94	0.49
1:C:1:MSE:HE2	1:C:27:LEU:HB2	1.94	0.49
1:D:211:ARG:HH22	1:D:308:PRO:CD	2.25	0.49
1:B:318:TYR:HA	1:B:355:ARG:O	2.13	0.48
1:A:266:LEU:HD23	1:A:267:VAL:N	2.28	0.48
1:B:159:TYR:OH	1:B:183:LEU:HD13	2.13	0.48
1:C:107:ARG:NH1	1:C:107:ARG:HB3	2.27	0.48
1:D:62:ARG:HH12	1:D:86:GLN:HE22	1.61	0.48
1:B:91:ARG:HH11	1:B:91:ARG:HB3	1.78	0.48
1:C:141:ALA:HB3	1:C:150:ALA:CB	2.41	0.48
1:D:265:LEU:C	1:D:265:LEU:HD12	2.33	0.48
1:B:179:ASN:O	1:B:183:LEU:HG	2.13	0.48
1:C:404:ARG:HD3	3:C:733:HOH:O	2.12	0.48
1:D:1:MSE:C	1:D:1:MSE:SE	3.01	0.48
1:A:187:LYS:H	1:A:187:LYS:CD	2.25	0.48
1:A:480:ARG:HD3	1:A:481:ARG:HH11	1.77	0.48
1:A:91:ARG:NH1	1:A:132:ALA:HB2	2.28	0.48
1:B:1:MSE:C	1:B:1:MSE:SE	3.01	0.48
1:C:107:ARG:HH11	1:C:107:ARG:CB	2.25	0.48
1:C:451:ARG:HG2	1:C:491:ASP:HB3	1.95	0.48
1:C:198:GLU:HG3	1:C:201:ARG:NH1	2.27	0.48
1:D:16:ALA:HB2	1:D:28:ILE:HD11	1.95	0.48
1:D:318:TYR:CD2	1:D:322:ILE:HD11	2.49	0.48
1:B:44:GLN:O	1:B:73:PRO:HD2	2.13	0.48
1:D:281:VAL:CG2	1:D:290:ILE:CD1	2.82	0.48
1:D:293:ARG:HH11	1:D:293:ARG:HG3	1.77	0.48
1:A:457:ASP:CG	1:A:459:MSE:HB2	2.33	0.48
1:B:62:ARG:HH12	1:B:86:GLN:NE2	2.12	0.48
1:C:251:ARG:HD3	1:C:267:VAL:HG11	1.96	0.48
1:B:243:HIS:HE1	1:B:383:GLY:O	1.97	0.47
1:B:1:MSE:HE3	1:B:41:HIS:HB3	1.96	0.47
1:C:155:ASP:OD1	1:C:157:ARG:HB2	2.14	0.47
1:D:424:GLN:HE21	1:D:458:PHE:HE1	1.60	0.47
1:A:40:LYS:HG3	1:A:41:HIS:ND1	2.30	0.47
1:C:288:ARG:CZ	1:C:388:VAL:HG11	2.44	0.47
1:C:491:ASP:HA	1:D:489:VAL:HG12	1.95	0.47
1:C:288:ARG:NH1	1:C:384:PRO:HG3	2.29	0.47
1:D:35:LEU:O	1:D:38:VAL:HG22	2.14	0.47
1:A:91:ARG:HH12	1:A:132:ALA:HB2	1.79	0.47
1:D:213:LEU:O	1:D:312:LEU:HD12	2.14	0.47
1:C:107:ARG:NH2	1:C:139:VAL:O	2.48	0.47

Continued on next page...

Continued from previous page...

Atom-1	Atom-2	Interatomic distance (Å)	Clash overlap (Å)
1:C:278:LEU:HD11	1:C:291:ILE:HD11	1.97	0.47
1:B:102:LYS:HE2	1:D:415:GLU:OE2	2.15	0.47
1:A:390:VAL:HG21	1:A:394:VAL:HG22	1.96	0.47
1:A:46:LEU:HD13	1:A:67:LEU:HD11	1.97	0.47
1:C:285:GLU:O	1:C:289:LYS:HG3	2.14	0.47
1:D:214:LEU:HD12	1:D:214:LEU:C	2.34	0.47
1:D:265:LEU:O	1:D:265:LEU:HD12	2.13	0.47
1:D:273:ARG:NH1	1:D:298:ALA:HB2	2.30	0.47
1:B:244:GLY:CA	1:B:271:LYS:HG2	2.44	0.47
1:D:68:PHE:CD2	1:D:88:LEU:CD2	2.93	0.47
1:D:81:MSE:SE	1:D:151:ILE:HG12	2.65	0.47
1:C:270:ALA:HB1	1:C:273:ARG:HD3	1.96	0.47
1:B:227:LEU:HD21	1:B:261:LEU:HD23	1.98	0.46
1:D:397:GLU:O	1:D:401:ILE:HG13	2.14	0.46
1:D:92:VAL:HG12	1:D:130:VAL:HG12	1.97	0.46
1:B:243:HIS:CD2	1:B:245:LEU:H	2.33	0.46
1:D:84:LEU:HD21	1:D:137:TRP:CH2	2.50	0.46
1:B:93:GLU:HG2	1:B:94:ARG:N	2.30	0.46
1:C:1:MSE:H2	1:C:44:GLN:HG3	1.80	0.46
1:C:91:ARG:HH11	1:C:91:ARG:HG3	1.80	0.46
1:D:106:THR:HG22	1:D:142:GLU:C	2.35	0.46
1:B:117:GLU:OE2	1:D:249:GLY:HA2	2.14	0.46
1:A:94:ARG:HA	1:A:128:ASP:OD1	2.16	0.46
1:B:116:LEU:HD21	1:B:176:ILE:HG13	1.98	0.46
1:D:238:ALA:O	1:D:265:LEU:HA	2.15	0.46
1:D:74:LEU:HD23	1:D:75:LEU:N	2.30	0.46
1:A:465:ARG:HB3	1:B:468:LEU:HD13	1.96	0.46
1:B:213:LEU:HB2	1:B:309:PHE:CG	2.51	0.46
1:D:14:LEU:O	1:D:18:ARG:HB2	2.15	0.46
1:A:214:LEU:HD12	1:A:215:ALA:H	1.81	0.46
1:D:184:ALA:HB3	1:D:186:VAL:HG23	1.98	0.46
1:B:317:LEU:O	1:B:320:ASP:HB2	2.16	0.46
1:C:255:GLU:OE1	1:C:267:VAL:HG21	2.16	0.46
1:B:81:MSE:SE	1:B:161:VAL:N	2.99	0.46
1:C:322:ILE:O	1:C:322:ILE:HG22	2.16	0.46
1:D:111:PRO:HB2	1:D:183:LEU:HD21	1.98	0.46
1:A:404:ARG:NH2	1:A:484:GLU:OE2	2.43	0.45
1:D:17:ARG:NH2	3:D:736:HOH:O	2.49	0.45
1:A:390:VAL:CG2	1:A:390:VAL:O	2.63	0.45
1:D:3:LEU:HB3	1:D:46:LEU:HD23	1.97	0.45
1:B:141:ALA:HB3	1:B:150:ALA:CB	2.47	0.45

Continued on next page...

Continued from previous page...

Atom-1	Atom-2	Interatomic distance (Å)	Clash overlap (Å)
1:C:141:ALA:CB	1:C:150:ALA:HB3	2.45	0.45
1:C:457:ASP:OD1	1:C:459:MSE:N	2.46	0.45
1:C:487:ARG:HD3	1:D:502:TRP:CE2	2.51	0.45
1:D:212:VAL:O	1:D:236:HIS:HA	2.16	0.45
1:A:448:LEU:HD13	1:A:485:ILE:HD11	1.97	0.45
1:C:93:GLU:O	1:C:128:ASP:HB3	2.16	0.45
1:B:122:VAL:HG23	1:B:124:MSE:HG2	1.99	0.45
1:D:116:LEU:HD12	1:D:116:LEU:N	2.32	0.45
1:D:13:ARG:HH12	1:D:17:ARG:NH1	2.14	0.45
1:B:117:GLU:HB2	1:D:248:LEU:HG	1.98	0.45
1:D:89:GLY:C	1:D:135:PRO:HD3	2.37	0.45
1:B:62:ARG:HH22	1:B:86:GLN:HE21	1.64	0.45
1:C:14:LEU:HD11	1:C:18:ARG:CZ	2.47	0.45
1:D:67:LEU:C	1:D:69:SER:H	2.19	0.45
1:D:88:LEU:HB3	1:D:134:PRO:HB3	1.99	0.45
1:D:455:THR:HB	1:D:461:ALA:CB	2.47	0.45
1:A:191:THR:O	1:A:195:VAL:HG23	2.17	0.45
1:A:455:THR:HG22	1:A:456:GLU:H	1.80	0.45
1:D:211:ARG:HB3	1:D:309:PHE:CD1	2.52	0.45
1:C:232:ALA:HB3	1:C:234:VAL:HG13	1.98	0.45
1:D:139:VAL:O	1:D:139:VAL:HG23	2.17	0.45
1:B:82:GLN:NE2	1:B:128:ASP:HB2	2.32	0.44
1:B:240:PHE:HE2	1:B:254:VAL:HG11	1.82	0.44
1:C:490:TYR:HB2	1:D:492:LEU:HD21	1.98	0.44
1:D:95:ALA:H	1:D:128:ASP:HA	1.82	0.44
1:D:162:GLN:O	1:D:162:GLN:HG3	2.17	0.44
1:D:88:LEU:HB2	1:D:134:PRO:HB3	1.99	0.44
1:D:213:LEU:HB2	1:D:309:PHE:CG	2.52	0.44
1:A:191:THR:HB	1:A:193:GLU:OE1	2.17	0.44
1:B:255:GLU:HA	1:B:265:LEU:CD2	2.47	0.44
1:C:455:THR:HG21	1:C:458:PHE:HA	1.98	0.44
1:D:432:VAL:HG22	1:D:433:ARG:HD3	1.99	0.44
1:A:107:ARG:O	1:A:141:ALA:HA	2.17	0.44
1:B:477:ARG:CD	1:B:481:ARG:NH1	2.80	0.44
1:D:153:SER:CB	1:D:158:ALA:HB3	2.37	0.44
1:D:121:GLN:O	1:D:170:THR:HA	2.17	0.44
1:D:433:ARG:HD3	1:D:433:ARG:O	2.17	0.44
1:B:184:ALA:HB3	1:B:186:VAL:HG23	1.99	0.44
1:D:283:ASP:HB3	1:D:286:GLU:HB2	2.00	0.44
1:D:210:ASP:HB3	1:D:310:ARG:HB3	1.99	0.44
1:A:193:GLU:HG2	1:A:194:HIS:N	2.32	0.44

Continued on next page...

Continued from previous page...

Atom-1	Atom-2	Interatomic distance (Å)	Clash overlap (Å)
1:A:39:LEU:CD2	1:A:72:LEU:HD11	2.48	0.44
1:B:306:ARG:HG3	1:B:306:ARG:HH11	1.83	0.44
1:C:53:ARG:HD2	1:C:61:PRO:CD	2.47	0.44
1:A:306:ARG:CG	1:A:306:ARG:HH11	2.30	0.44
1:A:44:GLN:CD	1:A:187:LYS:HD2	2.37	0.44
1:A:455:THR:OG1	1:A:461:ALA:HB2	2.18	0.44
1:C:23:ARG:HB2	1:C:188:ARG:HB3	2.00	0.44
1:C:187:LYS:HE2	1:C:189:ASP:OD1	2.18	0.44
1:C:201:ARG:HG2	1:C:205:GLU:OE2	2.17	0.44
1:D:13:ARG:NH2	1:D:13:ARG:HB3	2.33	0.44
1:A:92:VAL:HG22	1:A:130:VAL:HG12	1.99	0.44
1:B:141:ALA:CB	1:B:150:ALA:HB3	2.46	0.44
1:A:293:ARG:HG2	1:A:293:ARG:NH1	2.33	0.44
1:B:212:VAL:HB	1:B:311:PHE:HB2	1.99	0.44
1:B:227:LEU:CD2	1:B:261:LEU:HD23	2.47	0.44
1:B:28:ILE:HD12	1:B:322:ILE:CD1	2.48	0.44
1:B:384:PRO:HB2	1:B:388:VAL:HG13	1.99	0.44
1:D:124:MSE:HE1	1:D:149:ALA:HB1	2.00	0.44
1:A:165:PRO:O	1:A:173:GLY:HA3	2.18	0.43
1:A:1:MSE:C	1:A:1:MSE:SE	3.07	0.43
1:B:191:THR:O	1:B:195:VAL:HG23	2.18	0.43
1:B:240:PHE:CE2	1:B:254:VAL:HG11	2.53	0.43
1:B:20:ARG:HD3	1:B:361:GLU:OE2	2.18	0.43
1:B:465:ARG:HH11	1:B:465:ARG:HG3	1.83	0.43
1:C:245:LEU:HD11	1:C:291:ILE:HD13	2.00	0.43
1:A:74:LEU:HD11	1:A:84:LEU:HD13	2.00	0.43
1:B:214:LEU:HD13	1:B:214:LEU:O	2.18	0.43
1:C:412:LEU:HD11	1:C:477:ARG:HD2	1.99	0.43
1:A:44:GLN:OE1	1:A:187:LYS:CD	2.64	0.43
1:A:14:LEU:HD11	1:A:18:ARG:CZ	2.48	0.43
1:B:72:LEU:HA	1:B:72:LEU:HD23	1.87	0.43
1:D:107:ARG:NH2	1:D:139:VAL:O	2.51	0.43
1:C:465:ARG:HB3	1:D:468:LEU:HD13	2.01	0.43
1:D:56:PHE:CE2	1:D:93:GLU:C	2.87	0.43
1:A:116:LEU:HD21	1:A:176:ILE:HG13	2.00	0.43
1:B:91:ARG:NH1	1:B:132:ALA:CB	2.82	0.43
1:A:322:ILE:O	1:A:322:ILE:CG2	2.66	0.43
1:B:114:ARG:HG3	1:B:114:ARG:NH1	2.33	0.43
1:D:123:TRP:CD1	1:D:167:VAL:HG21	2.54	0.43
1:D:302:VAL:HG13	1:D:306:ARG:HG3	2.00	0.43
1:D:3:LEU:HD23	1:D:4:VAL:H	1.83	0.43

Continued on next page...

Continued from previous page...

Atom-1	Atom-2	Interatomic distance (Å)	Clash overlap (Å)
1:B:57:ASP:HB3	1:B:60:ALA:HB2	2.00	0.43
1:A:455:THR:CG2	1:A:456:GLU:N	2.82	0.43
1:C:62:ARG:NH2	1:C:86:GLN:OE1	2.45	0.43
1:C:9:SER:HB2	1:C:50:GLY:C	2.39	0.43
1:A:206:ARG:HG2	1:A:206:ARG:HH11	1.84	0.43
1:A:291:ILE:HD12	1:A:384:PRO:CA	2.48	0.43
1:B:169:HIS:O	1:B:171:PRO:HD3	2.18	0.43
1:A:491:ASP:OD2	1:B:487:ARG:HD3	2.19	0.43
1:C:193:GLU:HG2	1:C:194:HIS:N	2.34	0.43
1:C:207:ALA:HA	1:C:311:PHE:CE2	2.54	0.43
1:C:214:LEU:HD11	1:C:225:LEU:HD23	2.00	0.43
1:D:139:VAL:HG12	1:D:148:VAL:HG13	2.01	0.43
1:D:19:LEU:HD11	1:D:47:ILE:CD1	2.47	0.43
1:D:211:ARG:NH2	1:D:308:PRO:CD	2.81	0.43
1:D:211:ARG:NH2	1:D:308:PRO:N	2.67	0.43
1:C:468:LEU:HD13	1:D:465:ARG:HB3	2.00	0.43
1:D:39:LEU:HD23	1:D:72:LEU:HD11	2.01	0.43
1:A:383:GLY:N	1:A:384:PRO:HD2	2.34	0.43
1:A:46:LEU:CD1	1:A:67:LEU:HD11	2.49	0.43
1:C:165:PRO:O	1:C:173:GLY:HA3	2.18	0.43
1:D:477:ARG:HG3	1:D:481:ARG:NH1	2.34	0.43
1:A:224:THR:HG23	1:A:369:LEU:HD12	2.00	0.42
1:B:193:GLU:HG2	1:B:194:HIS:N	2.34	0.42
1:C:383:GLY:N	1:C:384:PRO:HD2	2.34	0.42
1:D:114:ARG:O	1:D:116:LEU:HD12	2.19	0.42
1:D:122:VAL:HB	1:D:163:PHE:CG	2.54	0.42
1:A:137:TRP:CE2	1:A:153:SER:HB3	2.54	0.42
1:A:266:LEU:C	1:A:266:LEU:CD2	2.87	0.42
1:B:245:LEU:HD13	1:B:387:ALA:HB2	2.01	0.42
1:B:481:ARG:C	1:B:483:PRO:HD3	2.39	0.42
1:C:99:GLU:HG3	1:C:126:HIS:HB2	2.01	0.42
1:A:455:THR:CG2	1:A:458:PHE:H	2.33	0.42
1:B:169:HIS:C	1:B:171:PRO:HD3	2.38	0.42
1:C:109:GLU:CG	1:C:110:GLY:N	2.82	0.42
1:D:155:ASP:OD1	1:D:157:ARG:N	2.48	0.42
1:D:212:VAL:HG23	1:D:212:VAL:O	2.19	0.42
1:D:310:ARG:HG2	1:D:310:ARG:NH1	2.35	0.42
1:D:34:PRO:O	1:D:37:GLU:HB3	2.19	0.42
1:B:211:ARG:NH1	1:B:235:ASP:OD2	2.52	0.42
1:B:288:ARG:NH2	1:B:503:GLU:O	2.52	0.42
1:D:97:ARG:HG3	1:D:99:GLU:HG2	2.01	0.42

Continued on next page...

Continued from previous page...

Atom-1	Atom-2	Interatomic distance (Å)	Clash overlap (Å)
1:A:116:LEU:HD21	1:A:176:ILE:CG1	2.49	0.42
1:A:287:LYS:HE2	1:A:394:VAL:HG23	2.02	0.42
1:A:266:LEU:HD12	1:A:306:ARG:HD2	2.01	0.42
1:B:242:ASP:OD2	1:B:251:ARG:HD2	2.20	0.42
1:B:273:ARG:HG2	1:B:273:ARG:HH11	1.83	0.42
1:C:81:MSE:HG3	1:C:160:GLY:HA3	2.00	0.42
1:D:14:LEU:HD12	1:D:14:LEU:N	2.34	0.42
1:D:38:VAL:HG23	1:D:39:LEU:H	1.84	0.42
1:D:480:ARG:NH1	1:D:480:ARG:HG3	2.35	0.42
1:D:81:MSE:HE3	1:D:130:VAL:HG21	2.01	0.42
1:B:457:ASP:CG	1:B:459:MSE:HB2	2.39	0.42
1:D:192:PRO:HB2	1:D:368:LEU:CD2	2.49	0.42
1:D:288:ARG:O	1:D:292:GLY:N	2.48	0.42
1:A:313:ALA:HA	1:A:351:LEU:O	2.19	0.42
1:A:390:VAL:CG2	1:A:394:VAL:HG22	2.50	0.42
1:B:288:ARG:HH21	1:B:503:GLU:C	2.22	0.42
1:B:391:LEU:O	1:B:431:PRO:HD2	2.19	0.42
1:D:41:HIS:O	1:D:42:ARG:C	2.59	0.42
1:D:455:THR:HB	1:D:461:ALA:HB2	2.01	0.42
1:D:46:LEU:HD11	1:D:72:LEU:HD12	2.02	0.42
1:A:79:TYR:CE2	1:A:83:LEU:HD11	2.54	0.42
1:C:285:GLU:HG2	1:C:289:LYS:HE3	2.01	0.42
1:D:127:GLN:O	1:D:127:GLN:HG3	2.20	0.42
1:D:204:ARG:HD3	1:D:232:ALA:HB1	2.02	0.42
1:A:23:ARG:HB2	1:A:188:ARG:HB3	2.02	0.41
1:A:318:TYR:CE2	1:A:322:ILE:CD1	2.90	0.41
1:B:251:ARG:HH21	1:B:267:VAL:HG21	1.85	0.41
1:B:36:GLU:OE2	1:B:37:GLU:HB2	2.20	0.41
1:B:251:ARG:HG3	1:B:252:GLU:N	2.36	0.41
1:B:3:LEU:HD21	1:B:29:LEU:HD12	2.01	0.41
1:C:365:LEU:HD23	1:C:365:LEU:HA	1.93	0.41
1:D:383:GLY:N	1:D:384:PRO:CD	2.83	0.41
1:D:288:ARG:NE	1:D:388:VAL:HG11	2.31	0.41
1:A:201:ARG:HG2	1:A:205:GLU:OE2	2.21	0.41
1:B:484:GLU:H	1:B:484:GLU:CD	2.23	0.41
1:C:55:VAL:HG21	1:C:92:VAL:HG11	2.02	0.41
1:D:20:ARG:HD3	1:D:361:GLU:OE2	2.20	0.41
1:D:56:PHE:CZ	1:D:92:VAL:C	2.84	0.41
1:D:134:PRO:HA	1:D:135:PRO:HD3	1.95	0.41
1:A:146:ASN:HA	1:A:147:PRO:HD2	1.96	0.41
1:A:320:ASP:O	1:A:323:GLU:C	2.58	0.41

Continued on next page...

Continued from previous page...

Atom-1	Atom-2	Interatomic distance (Å)	Clash overlap (Å)
1:B:67:LEU:C	1:B:67:LEU:HD23	2.40	0.41
1:C:288:ARG:NH1	2:C:703:XMP:O6	2.53	0.41
1:D:38:VAL:CG2	1:D:39:LEU:N	2.82	0.41
1:B:46:LEU:O	1:B:74:LEU:HA	2.20	0.41
1:B:67:LEU:O	1:B:67:LEU:HD23	2.20	0.41
1:B:98:ALA:HB2	1:B:127:GLN:HE21	1.79	0.41
1:C:33:ALA:HA	1:C:34:PRO:HD3	1.92	0.41
1:A:3:LEU:HD11	1:A:29:LEU:HB3	2.02	0.41
1:A:457:ASP:OD2	1:A:459:MSE:N	2.51	0.41
1:B:48:LEU:N	1:B:48:LEU:CD1	2.84	0.41
1:C:18:ARG:HD2	1:C:174:MSE:SE	2.70	0.41
1:C:451:ARG:HG2	1:C:491:ASP:CB	2.50	0.41
1:D:100:TYR:HE1	1:D:164:HIS:CE1	2.38	0.41
1:A:457:ASP:OD1	1:A:459:MSE:HB2	2.20	0.41
1:B:287:LYS:O	1:B:291:ILE:CG1	2.69	0.41
1:C:214:LEU:HD13	1:C:313:ALA:HB3	2.02	0.41
1:B:259:ARG:HH11	1:B:259:ARG:HG2	1.85	0.41
1:B:322:ILE:HG22	1:B:322:ILE:O	2.21	0.41
1:B:429:LEU:O	1:B:431:PRO:HD3	2.21	0.41
1:C:374:THR:O	1:C:378:ARG:HG3	2.21	0.41
1:D:216:VAL:O	1:D:240:PHE:HD1	2.04	0.41
1:A:243:HIS:H	1:A:243:HIS:CD2	2.38	0.41
1:A:42:ARG:N	1:A:43:PRO:HD3	2.36	0.40
1:C:412:LEU:CD2	1:C:474:ALA:HA	2.51	0.40
1:A:274:PHE:CE1	1:A:294:GLU:HB2	2.57	0.40
1:C:293:ARG:HG2	1:C:293:ARG:HH11	1.86	0.40
1:C:213:LEU:HB2	1:C:309:PHE:CG	2.56	0.40
1:D:100:TYR:HB2	1:D:123:TRP:CZ2	2.57	0.40
1:D:178:GLU:OE2	1:D:182:GLU:OE2	2.39	0.40
1:A:62:ARG:HH12	1:A:86:GLN:HE22	1.67	0.40
1:C:1:MSE:H2	1:C:44:GLN:NE2	2.07	0.40
1:D:66:ARG:HB3	1:D:69:SER:HB3	2.03	0.40
1:A:44:GLN:OE1	1:A:186:VAL:HA	2.21	0.40
1:A:272:GLU:CG	1:A:276:LYS:HE2	2.42	0.40
1:B:94:ARG:HD3	1:B:128:ASP:OD1	2.21	0.40
1:C:501:GLU:HG2	2:C:703:XMP:H2'	2.03	0.40
1:D:109:GLU:O	1:D:140:VAL:HB	2.22	0.40
1:D:281:VAL:CG2	1:D:290:ILE:HD12	2.32	0.40

There are no symmetry-related clashes.

5.3 Torsion angles

5.3.1 Protein backbone

In the following table, the Percentiles column shows the percent Ramachandran outliers of the chain as a percentile score with respect to all X-ray entries followed by that with respect to entries of similar resolution.

The Analysed column shows the number of residues for which the backbone conformation was analysed, and the total number of residues.

Mol	Chain	Analysed	Favoured	Allowed	Outliers	Percentiles	
1	A	469/503 (93%)	454 (97%)	15 (3%)	0	100	100
1	B	461/503 (92%)	437 (95%)	21 (5%)	3 (1%)	25	24
1	C	461/503 (92%)	447 (97%)	14 (3%)	0	100	100
1	D	461/503 (92%)	426 (92%)	33 (7%)	2 (0%)	38	41
All	All	1852/2012 (92%)	1764 (95%)	83 (4%)	5 (0%)	44	49

All (5) Ramachandran outliers are listed below:

Mol	Chain	Res	Type
1	B	98	ALA
1	B	458	PHE
1	B	96	GLY
1	D	98	ALA
1	D	233	GLY

5.3.2 Protein sidechains

In the following table, the Percentiles column shows the percent sidechain outliers of the chain as a percentile score with respect to all X-ray entries followed by that with respect to entries of similar resolution.

The Analysed column shows the number of residues for which the sidechain conformation was analysed, and the total number of residues.

Mol	Chain	Analysed	Rotameric	Outliers	Percentiles	
1	A	390/404 (96%)	372 (95%)	18 (5%)	31	39
1	B	384/404 (95%)	370 (96%)	14 (4%)	40	50
1	C	384/404 (95%)	369 (96%)	15 (4%)	37	46
1	D	384/404 (95%)	367 (96%)	17 (4%)	33	40
All	All	1542/1616 (95%)	1478 (96%)	64 (4%)	34	43

All (64) residues with a non-rotameric sidechain are listed below:

Mol	Chain	Res	Type
1	A	3	LEU
1	A	44	GLN
1	A	74	LEU
1	A	144	GLU
1	A	157	ARG
1	A	187	LYS
1	A	189	ASP
1	A	209	LYS
1	A	211	ARG
1	A	243	HIS
1	A	263	VAL
1	A	323	GLU
1	A	375	LEU
1	A	420	GLU
1	A	457	ASP
1	A	462	ASP
1	A	469	GLU
1	A	497	PRO
1	B	1	MSE
1	B	3	LEU
1	B	13	ARG
1	B	37	GLU
1	B	59	ASP
1	B	189	ASP
1	B	212	VAL
1	B	214	LEU
1	B	240	PHE
1	B	243	HIS
1	B	267	VAL
1	B	290	ILE
1	B	401	ILE
1	B	481	ARG
1	C	1	MSE
1	C	5	LEU
1	C	48	LEU
1	C	97	ARG
1	C	216	VAL
1	C	243	HIS
1	C	272	GLU
1	C	291	ILE
1	C	310	ARG
1	C	348	PHE

Continued on next page...

Continued from previous page...

Mol	Chain	Res	Type
1	C	364	GLU
1	C	367	LEU
1	C	451	ARG
1	C	455	THR
1	C	480	ARG
1	D	1	MSE
1	D	3	LEU
1	D	18	ARG
1	D	48	LEU
1	D	59	ASP
1	D	81	MSE
1	D	193	GLU
1	D	246	LEU
1	D	247	ARG
1	D	282	GLU
1	D	367	LEU
1	D	433	ARG
1	D	450	LEU
1	D	469	GLU
1	D	482	VAL
1	D	492	LEU
1	D	497	PRO

Some sidechains can be flipped to improve hydrogen bonding and reduce clashes. All (17) such sidechains are listed below:

Mol	Chain	Res	Type
1	A	86	GLN
1	A	179	ASN
1	A	243	HIS
1	A	301	GLN
1	B	86	GLN
1	B	175	GLN
1	B	243	HIS
1	C	44	GLN
1	C	164	HIS
1	C	243	HIS
1	C	314	GLN
1	D	10	GLN
1	D	41	HIS
1	D	86	GLN
1	D	164	HIS
1	D	243	HIS

Continued on next page...

Continued from previous page...

Mol	Chain	Res	Type
1	D	424	GLN

5.3.3 RNA [i](#)

There are no RNA molecules in this entry.

5.4 Non-standard residues in protein, DNA, RNA chains [i](#)

There are no non-standard protein/DNA/RNA residues in this entry.

5.5 Carbohydrates [i](#)

There are no carbohydrates in this entry.

5.6 Ligand geometry [i](#)

4 ligands are modelled in this entry.

In the following table, the Counts columns list the number of bonds (or angles) for which Mogul statistics could be retrieved, the number of bonds (or angles) that are observed in the model and the number of bonds (or angles) that are defined in the chemical component dictionary. The Link column lists molecule types, if any, to which the group is linked. The Z score for a bond length (or angle) is the number of standard deviations the observed value is removed from the expected value. A bond length (or angle) with $|Z| > 2$ is considered an outlier worth inspection. RMSZ is the root-mean-square of all Z scores of the bond lengths (or angles).

Mol	Type	Chain	Res	Link	Bond lengths			Bond angles		
					Counts	RMSZ	$\# Z > 2$	Counts	RMSZ	$\# Z > 2$
2	XMP	A	701	-	21,26,26	1.96	5 (23%)	22,40,40	2.12	4 (18%)
2	XMP	B	702	-	21,26,26	1.95	6 (28%)	22,40,40	2.09	4 (18%)
2	XMP	C	703	-	21,26,26	1.99	5 (23%)	22,40,40	2.02	4 (18%)
2	XMP	D	704	-	21,26,26	1.89	5 (23%)	22,40,40	2.04	4 (18%)

In the following table, the Chirals column lists the number of chiral outliers, the number of chiral centers analysed, the number of these observed in the model and the number defined in the chemical component dictionary. Similar counts are reported in the Torsion and Rings columns. '-' means no outliers of that kind were identified.

Mol	Type	Chain	Res	Link	Chirals	Torsions	Rings
2	XMP	A	701	-	-	0/6/26/26	0/3/3/3
2	XMP	B	702	-	-	0/6/26/26	0/3/3/3
2	XMP	C	703	-	-	0/6/26/26	0/3/3/3
2	XMP	D	704	-	-	0/6/26/26	0/3/3/3

All (21) bond length outliers are listed below:

Mol	Chain	Res	Type	Atoms	Z	Observed(Å)	Ideal(Å)
2	D	704	XMP	C8-N7	-2.38	1.30	1.34
2	B	702	XMP	C8-N7	-2.26	1.30	1.34
2	A	701	XMP	C8-N7	-2.24	1.30	1.34
2	C	703	XMP	C8-N7	-2.17	1.30	1.34
2	B	702	XMP	P-O2P	2.04	1.63	1.54
2	B	702	XMP	C6-N1	2.47	1.37	1.33
2	A	701	XMP	C6-N1	2.61	1.37	1.33
2	D	704	XMP	C6-N1	2.74	1.38	1.33
2	C	703	XMP	C6-N1	2.79	1.38	1.33
2	D	704	XMP	C6-C5	3.43	1.47	1.41
2	A	701	XMP	C6-C5	3.47	1.48	1.41
2	C	703	XMP	C6-C5	3.60	1.48	1.41
2	B	702	XMP	C6-C5	3.65	1.48	1.41
2	A	701	XMP	O4'-C1'	3.79	1.46	1.41
2	D	704	XMP	O4'-C1'	3.83	1.46	1.41
2	C	703	XMP	O4'-C1'	3.86	1.46	1.41
2	B	702	XMP	O4'-C1'	3.90	1.46	1.41
2	D	704	XMP	C4-N3	4.87	1.40	1.33
2	B	702	XMP	C4-N3	5.00	1.40	1.33
2	A	701	XMP	C4-N3	5.36	1.40	1.33
2	C	703	XMP	C4-N3	5.44	1.40	1.33

All (16) bond angle outliers are listed below:

Mol	Chain	Res	Type	Atoms	Z	Observed(°)	Ideal(°)
2	A	701	XMP	C6-C5-C4	-3.60	117.26	120.84
2	B	702	XMP	C6-C5-C4	-3.49	117.37	120.84
2	D	704	XMP	C5-C6-N1	-3.35	118.71	123.48
2	B	702	XMP	C5-C6-N1	-3.19	118.94	123.48
2	D	704	XMP	C6-C5-C4	-3.17	117.69	120.84
2	C	703	XMP	C6-C5-C4	-3.13	117.73	120.84
2	A	701	XMP	C5-C6-N1	-3.09	119.09	123.48
2	D	704	XMP	P-O5'-C5'	-3.08	109.80	118.30
2	C	703	XMP	C5-C6-N1	-3.07	119.11	123.48
2	C	703	XMP	P-O5'-C5'	-3.02	109.98	118.30

Continued on next page...

Continued from previous page...

Mol	Chain	Res	Type	Atoms	Z	Observed(°)	Ideal(°)
2	A	701	XMP	P-O5'-C5'	-2.95	110.18	118.30
2	B	702	XMP	P-O5'-C5'	-2.94	110.20	118.30
2	D	704	XMP	C6-N1-C2	7.00	121.28	115.16
2	C	703	XMP	C6-N1-C2	7.04	121.31	115.16
2	B	702	XMP	C6-N1-C2	7.20	121.46	115.16
2	A	701	XMP	C6-N1-C2	7.35	121.59	115.16

There are no chirality outliers.

There are no torsion outliers.

There are no ring outliers.

4 monomers are involved in 10 short contacts:

Mol	Chain	Res	Type	Clashes	Symm-Clashes
2	A	701	XMP	1	0
2	B	702	XMP	3	0
2	C	703	XMP	4	0
2	D	704	XMP	2	0

5.7 Other polymers [i](#)

There are no such residues in this entry.

5.8 Polymer linkage issues [i](#)

There are no chain breaks in this entry.

6 Fit of model and data

6.1 Protein, DNA and RNA chains

In the following table, the column labelled ‘#RSRZ> 2’ contains the number (and percentage) of RSRZ outliers, followed by percent RSRZ outliers for the chain as percentile scores relative to all X-ray entries and entries of similar resolution. The OWAB column contains the minimum, median, 95th percentile and maximum values of the occupancy-weighted average B-factor per residue. The column labelled ‘Q< 0.9’ lists the number of (and percentage) of residues with an average occupancy less than 0.9.

Mol	Chain	Analysed	<RSRZ>	#RSRZ>2	OWAB(Å ²)	Q<0.9
1	A	470/503 (93%)	0.10	16 (3%) 46 43	20, 38, 78, 103	0
1	B	462/503 (91%)	0.25	16 (3%) 44 42	20, 50, 85, 117	0
1	C	462/503 (91%)	0.23	20 (4%) 36 34	21, 43, 79, 108	0
1	D	462/503 (91%)	0.63	55 (11%) 5 4	22, 55, 98, 130	0
All	All	1856/2012 (92%)	0.30	107 (5%) 24 23	20, 46, 86, 130	0

All (107) RSRZ outliers are listed below:

Mol	Chain	Res	Type	RSRZ
1	A	340	GLY	9.0
1	D	136	GLY	5.1
1	D	42	ARG	4.6
1	D	97	ARG	4.6
1	A	35	LEU	4.4
1	D	154	PRO	4.3
1	D	85	ALA	4.3
1	D	135	PRO	4.2
1	D	87	GLU	4.1
1	B	97	ARG	4.0
1	D	72	LEU	4.0
1	A	60	ALA	3.9
1	D	59	ASP	3.9
1	B	91	ARG	3.8
1	D	94	ARG	3.8
1	D	56	PHE	3.8
1	D	83	LEU	3.7
1	B	307	GLY	3.6
1	D	84	LEU	3.6
1	D	65	PRO	3.5
1	D	177	LEU	3.5

Continued on next page...

Continued from previous page...

Mol	Chain	Res	Type	RSRZ
1	D	308	PRO	3.4
1	D	37	GLU	3.4
1	C	208	GLY	3.3
1	A	34	PRO	3.2
1	D	58	PRO	3.2
1	B	281	VAL	3.1
1	A	42	ARG	3.1
1	D	281	VAL	3.0
1	C	449	ALA	3.0
1	D	211	ARG	3.0
1	D	200	LEU	2.9
1	D	31	GLY	2.9
1	D	35	LEU	2.9
1	C	97	ARG	2.9
1	C	59	ASP	2.9
1	D	33	ALA	2.9
1	A	58	PRO	2.9
1	D	36	GLU	2.9
1	D	75	LEU	2.9
1	B	285	GLU	2.8
1	D	68	PHE	2.8
1	B	273	ARG	2.8
1	C	427	ALA	2.7
1	A	36	GLU	2.7
1	D	144	GLU	2.7
1	C	36	GLU	2.7
1	D	302	VAL	2.7
1	A	41	HIS	2.6
1	C	207	ALA	2.6
1	D	134	PRO	2.6
1	D	212	VAL	2.6
1	A	449	ALA	2.6
1	D	71	GLY	2.6
1	B	98	ALA	2.5
1	D	66	ARG	2.5
1	A	37	GLU	2.5
1	A	489	VAL	2.5
1	B	489	VAL	2.5
1	D	276	LYS	2.5
1	D	213	LEU	2.4
1	D	433	ARG	2.4
1	C	428	VAL	2.4

Continued on next page...

Continued from previous page...

Mol	Chain	Res	Type	RSRZ
1	A	97	ARG	2.4
1	D	96	GLY	2.4
1	B	455	THR	2.4
1	D	201	ARG	2.4
1	C	232	ALA	2.4
1	C	455	THR	2.4
1	D	93	GLU	2.4
1	D	80	GLY	2.4
1	D	73	PRO	2.3
1	B	428	VAL	2.3
1	D	176	ILE	2.2
1	D	456	GLU	2.2
1	A	40	LYS	2.2
1	D	278	LEU	2.2
1	C	272	GLU	2.2
1	C	204	ARG	2.2
1	B	308	PRO	2.2
1	C	58	PRO	2.2
1	B	456	GLU	2.2
1	A	428	VAL	2.2
1	D	156	GLY	2.2
1	D	209	LYS	2.2
1	C	67	LEU	2.2
1	D	235	ASP	2.2
1	C	56	PHE	2.1
1	D	7	PHE	2.1
1	C	96	GLY	2.1
1	B	163	PHE	2.1
1	C	348	PHE	2.1
1	D	458	PHE	2.1
1	D	247	ARG	2.1
1	B	137	TRP	2.1
1	D	67	LEU	2.1
1	B	416	TRP	2.1
1	A	341	GLY	2.1
1	D	307	GLY	2.1
1	D	88	LEU	2.1
1	C	163	PHE	2.1
1	C	450	LEU	2.0
1	D	89	GLY	2.0
1	D	98	ALA	2.0
1	B	289	LYS	2.0

Continued on next page...

Continued from previous page...

Mol	Chain	Res	Type	RSRZ
1	A	480	ARG	2.0
1	C	77	ILE	2.0

6.2 Non-standard residues in protein, DNA, RNA chains [i](#)

There are no non-standard protein/DNA/RNA residues in this entry.

6.3 Carbohydrates [i](#)

There are no carbohydrates in this entry.

6.4 Ligands [i](#)

In the following table, the Atoms column lists the number of modelled atoms in the group and the number defined in the chemical component dictionary. LLDF column lists the quality of electron density of the group with respect to its neighbouring residues in protein, DNA or RNA chains. The B-factors column lists the minimum, median, 95th percentile and maximum values of B factors of atoms in the group. The column labelled 'Q< 0.9' lists the number of atoms with occupancy less than 0.9.

Mol	Type	Chain	Res	Atoms	RSCC	RSR	LLDF	B-factors(Å ²)	Q<0.9
2	XMP	C	703	24/24	0.88	0.19	2.17	55,58,60,61	0
2	XMP	B	702	24/24	0.93	0.19	1.22	49,52,57,57	0
2	XMP	A	701	24/24	0.94	0.14	1.13	35,41,45,46	0
2	XMP	D	704	24/24	0.90	0.19	0.95	63,66,71,72	0

6.5 Other polymers [i](#)

There are no such residues in this entry.