



Full wwPDB X-ray Structure Validation Report ⓘ

Feb 14, 2017 – 08:16 pm GMT

PDB ID : 4YZ9
Title : Crystal Structure of human phosphorylated IRE1alpha in complex with a type III kinase inhibitor (GSK2850163A)
Authors : Concha, N.O.
Deposited on : 2015-03-24
Resolution : 2.46 Å(reported)

This is a Full wwPDB X-ray Structure Validation Report for a publicly released PDB entry.

We welcome your comments at validation@mail.wwpdb.org

A user guide is available at

<http://wwpdb.org/validation/2016/XrayValidationReportHelp>

with specific help available everywhere you see the ⓘ symbol.

The following versions of software and data (see [references ⓘ](#)) were used in the production of this report:

MolProbity : 4.02b-467
Mogul : 1.7.2 (RC1), CSD as538be (2017)
Xtriage (Phenix) : 1.9-1692
EDS : trunk28620
Percentile statistics : 20161228.v01 (using entries in the PDB archive December 28th 2016)
Refmac : 5.8.0135
CCP4 : 6.5.0
Ideal geometry (proteins) : Engh & Huber (2001)
Ideal geometry (DNA, RNA) : Parkinson et al. (1996)
Validation Pipeline (wwPDB-VP) : recalc28949

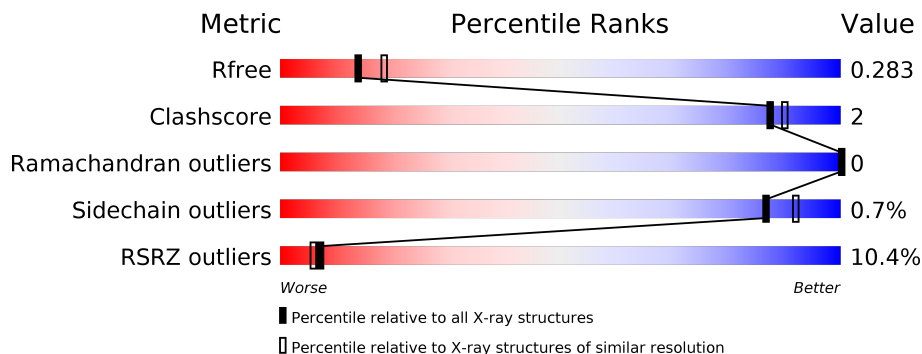
1 Overall quality at a glance

The following experimental techniques were used to determine the structure:

X-RAY DIFFRACTION

The reported resolution of this entry is 2.46 Å.

Percentile scores (ranging between 0-100) for global validation metrics of the entry are shown in the following graphic. The table shows the number of entries on which the scores are based.



Metric	Whole archive (#Entries)	Similar resolution (#Entries, resolution range(Å))
R_{free}	100719	1119 (2.48-2.44)
Clashscore	112137	1193 (2.48-2.44)
Ramachandran outliers	110173	1185 (2.48-2.44)
Sidechain outliers	110143	1185 (2.48-2.44)
RSRZ outliers	101464	1126 (2.48-2.44)

The table below summarises the geometric issues observed across the polymeric chains and their fit to the electron density. The red, orange, yellow and green segments on the lower bar indicate the fraction of residues that contain outliers for ≥ 3 , 2, 1 and 0 types of geometric quality criteria. A grey segment represents the fraction of residues that are not modelled. The numeric value for each fraction is indicated below the corresponding segment, with a dot representing fractions $\leq 5\%$. The upper red bar (where present) indicates the fraction of residues that have poor fit to the electron density. The numeric value is given above the bar.

Mol	Chain	Length	Quality of chain
1	A	405	<div> <div>6%</div> <div>87%</div> <div>7%</div> <div>6%</div> </div>
1	B	405	<div> <div>19%</div> <div>85%</div> <div>7%</div> <div>7%</div> </div>
1	C	405	<div> <div>5%</div> <div>88%</div> <div>5%</div> <div>7%</div> </div>

2 Entry composition [i](#)

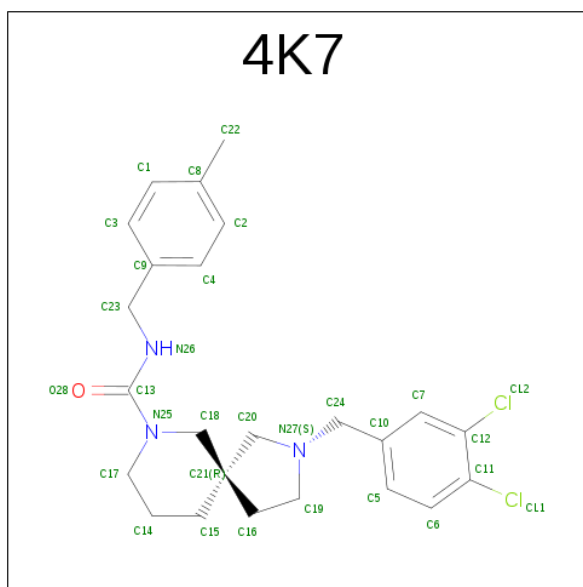
There are 3 unique types of molecules in this entry. The entry contains 17863 atoms, of which 8734 are hydrogens and 0 are deuteriums.

In the tables below, the ZeroOcc column contains the number of atoms modelled with zero occupancy, the AltConf column contains the number of residues with at least one atom in alternate conformation and the Trace column contains the number of residues modelled with at most 2 atoms.

- Molecule 1 is a protein called Serine/threonine-protein kinase/endoribonuclease IRE1.

Mol	Chain	Residues	Atoms						ZeroOcc	AltConf	Trace
1	A	381	Total	C	H	N	O	S	0	1	0
			5922	1926	2910	516	551	19			
1	B	375	Total	C	H	N	O	S	0	1	0
			5750	1880	2817	505	529	19			
1	C	378	Total	C	H	N	O	S	0	3	0
			5934	1926	2920	525	544	19			

- Molecule 2 is (5R)-2-(3,4-dichlorobenzyl)-N-(4-methylbenzyl)-2,7-diazaspiro[4.5]decane-7-carboxamide (three-letter code: 4K7) (formula: C₂₄H₂₉Cl₂N₃O).



Mol	Chain	Residues	Atoms						ZeroOcc	AltConf
2	A	1	Total	C	Cl	H	N	O	0	0
			59	24	2	29	3	1		
2	B	1	Total	C	Cl	H	N	O	0	0
			59	24	2	29	3	1		
2	C	1	Total	C	Cl	H	N	O	0	0
			59	24	2	29	3	1		

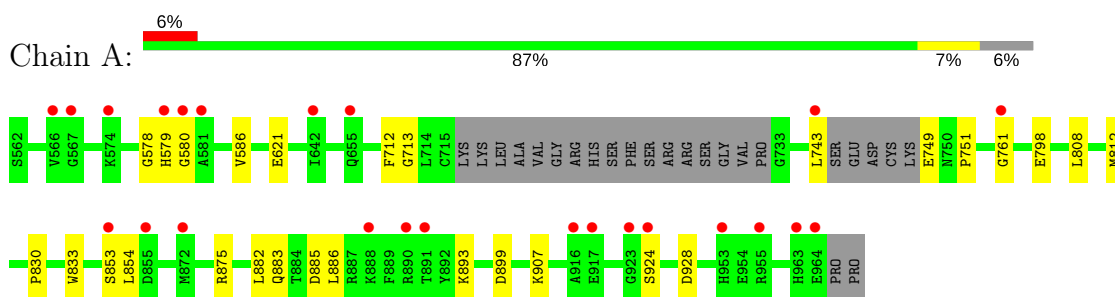
- Molecule 3 is water.

Mol	Chain	Residues	Atoms		ZeroOcc	AltConf
3	A	39	Total 39	O 39	0	0
3	B	9	Total 9	O 9	0	0
3	C	32	Total 32	O 32	0	0

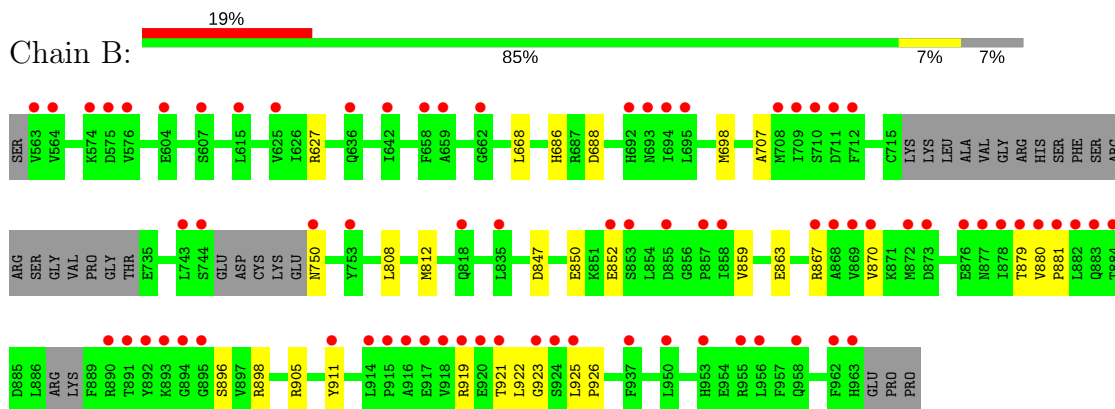
3 Residue-property plots [i](#)

These plots are drawn for all protein, RNA and DNA chains in the entry. The first graphic for a chain summarises the proportions of the various outlier classes displayed in the second graphic. The second graphic shows the sequence view annotated by issues in geometry and electron density. Residues are color-coded according to the number of geometric quality criteria for which they contain at least one outlier: green = 0, yellow = 1, orange = 2 and red = 3 or more. A red dot above a residue indicates a poor fit to the electron density ($RSRZ > 2$). Stretches of 2 or more consecutive residues without any outlier are shown as a green connector. Residues present in the sample, but not in the model, are shown in grey.

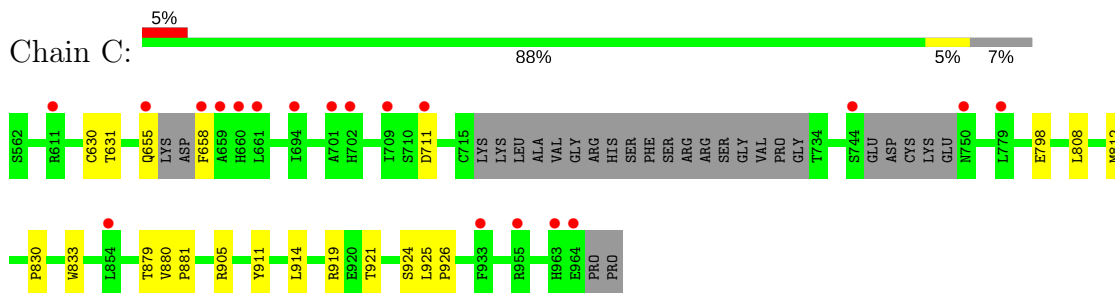
- Molecule 1: Serine/threonine-protein kinase/endoribonuclease IRE1



- Molecule 1: Serine/threonine-protein kinase/endoribonuclease IRE1



- Molecule 1: Serine/threonine-protein kinase/endoribonuclease IRE1



4 Data and refinement statistics

Property	Value	Source
Space group	P 21 21 2	Depositor
Cell constants a, b, c, α , β , γ	244.00Å 77.77Å 88.31Å 90.00° 90.00° 90.00°	Depositor
Resolution (Å)	29.18 – 2.46 30.18 – 2.46	Depositor EDS
% Data completeness (in resolution range)	96.7 (29.18-2.46) 96.7 (30.18-2.46)	Depositor EDS
R_{merge}	0.07	Depositor
R_{sym}	0.07	Depositor
$\langle I/\sigma(I) \rangle$ ¹	3.58 (at 2.48Å)	Xtriage
Refinement program	PHENIX (phenix.refine: 1.9_1692)	Depositor
R, R_{free}	0.235 , 0.283 0.237 , 0.283	Depositor DCC
R_{free} test set	3018 reflections (5.06%)	DCC
Wilson B-factor (Å ²)	44.9	Xtriage
Anisotropy	0.688	Xtriage
Bulk solvent k_{sol} (e/Å ³), B_{sol} (Å ²)	0.37 , 48.1	EDS
L-test for twinning ²	$\langle L \rangle = 0.49$, $\langle L^2 \rangle = 0.33$	Xtriage
Estimated twinning fraction	No twinning to report.	Xtriage
F_o, F_c correlation	0.92	EDS
Total number of atoms	17863	wwPDB-VP
Average B, all atoms (Å ²)	64.0	wwPDB-VP

Xtriage's analysis on translational NCS is as follows: *The largest off-origin peak in the Patterson function is 2.73% of the height of the origin peak. No significant pseudotranslation is detected.*

¹Intensities estimated from amplitudes.

²Theoretical values of $\langle |L| \rangle$, $\langle L^2 \rangle$ for acentric reflections are 0.5, 0.333 respectively for untwinned datasets, and 0.375, 0.2 for perfectly twinned datasets.

5 Model quality

5.1 Standard geometry

Bond lengths and bond angles in the following residue types are not validated in this section: 4K7

The Z score for a bond length (or angle) is the number of standard deviations the observed value is removed from the expected value. A bond length (or angle) with $|Z| > 5$ is considered an outlier worth inspection. RMSZ is the root-mean-square of all Z scores of the bond lengths (or angles).

Mol	Chain	Bond lengths		Bond angles	
		RMSZ	# Z >5	RMSZ	# Z >5
1	A	0.27	0/3088	0.46	0/4186
1	B	0.26	0/3007	0.44	0/4078
1	C	0.28	0/3096	0.46	0/4191
All	All	0.27	0/9191	0.45	0/12455

Chiral center outliers are detected by calculating the chiral volume of a chiral center and verifying if the center is modelled as a planar moiety or with the opposite hand. A planarity outlier is detected by checking planarity of atoms in a peptide group, atoms in a mainchain group or atoms of a sidechain that are expected to be planar.

Mol	Chain	#Chirality outliers	#Planarity outliers
1	A	0	1
1	B	0	1
All	All	0	2

There are no bond length outliers.

There are no bond angle outliers.

There are no chirality outliers.

All (2) planarity outliers are listed below:

Mol	Chain	Res	Type	Group
1	A	580	GLY	Peptide
1	B	922	LEU	Peptide

5.2 Too-close contacts

In the following table, the Non-H and H(model) columns list the number of non-hydrogen atoms and hydrogen atoms in the chain respectively. The H(added) column lists the number of hydrogen atoms added and optimized by MolProbity. The Clashes column lists the number of clashes within

the asymmetric unit, whereas Symm-Clashes lists symmetry related clashes.

Mol	Chain	Non-H	H(model)	H(added)	Clashes	Symm-Clashes
1	A	3012	2910	2899	14	0
1	B	2933	2817	2814	15	0
1	C	3014	2920	2922	15	0
2	A	30	29	29	0	0
2	B	30	29	29	0	0
2	C	30	29	29	0	0
3	A	39	0	0	2	0
3	B	9	0	0	0	0
3	C	32	0	0	1	0
All	All	9129	8734	8722	42	0

The all-atom clashscore is defined as the number of clashes found per 1000 atoms (including hydrogen atoms). The all-atom clashscore for this structure is 2.

All (42) close contacts within the same asymmetric unit are listed below, sorted by their clash magnitude.

Atom-1	Atom-2	Interatomic distance (Å)	Clash overlap (Å)
1:B:850:GLU:O	1:B:898:ARG:NH2	2.12	0.83
1:C:914:LEU:O	1:C:919:ARG:NH1	2.19	0.75
1:A:885:ASP:OD2	1:A:907:LYS:NZ	2.19	0.74
1:B:925:LEU:HD23	1:B:926:PRO:N	2.07	0.69
1:C:655:GLN:C	1:C:658:PHE:HA	2.15	0.67
1:B:847:ASP:OD1	1:B:905:ARG:NE	2.34	0.61
1:C:879:THR:HG21	1:C:921:THR:HB	1.82	0.60
1:A:875:ARG:O	1:A:883:GLN:NE2	2.34	0.59
1:A:621:GLU:OE2	3:A:1101:HOH:O	2.17	0.59
1:B:925:LEU:HD23	1:B:926:PRO:CA	2.37	0.55
1:A:798:GLU:HG3	1:C:798:GLU:HG3	1.90	0.53
1:C:630:CYS:SG	1:C:631:THR:N	2.84	0.51
1:C:881:PRO:HB2	1:C:921:THR:HG21	1.93	0.51
1:B:686:HIS:ND1	1:B:688:ASP:O	2.44	0.50
1:B:863:GLU:OE2	1:B:896:SER:OG	2.23	0.49
1:B:919:ARG:O	1:B:923:GLY:N	2.45	0.49
1:A:893:LYS:N	1:A:899:ASP:OD2	2.47	0.47
3:A:1101:HOH:O	1:B:627:ARG:NH1	2.47	0.46
1:C:711[B]:ASP:OD1	3:C:1101:HOH:O	2.21	0.46
1:B:911:TYR:OH	1:B:923:GLY:O	2.31	0.46
1:B:867:ARG:HA	1:B:870:VAL:HB	1.97	0.45
1:B:880:VAL:HB	1:B:881:PRO:HD3	1.98	0.45
1:B:852:GLU:HB2	1:B:859:VAL:CG2	2.46	0.45

Continued on next page...

Continued from previous page...

Atom-1	Atom-2	Interatomic distance (Å)	Clash overlap (Å)
1:C:925:LEU:HD23	1:C:926:PRO:HA	1.98	0.45
1:B:879:THR:HG21	1:B:921:THR:HG21	1.98	0.45
1:C:808:LEU:HG	1:C:812:MET:HE2	1.99	0.44
1:A:808:LEU:HG	1:A:812:MET:HE2	1.99	0.44
1:A:749:GLU:HG2	1:A:751:PRO:HD3	1.98	0.44
1:A:578:GLY:HA3	1:A:713:GLY:O	2.17	0.44
1:C:911:TYR:CG	1:C:925:LEU:HD12	2.53	0.43
1:C:879:THR:HG21	1:C:921:THR:CB	2.48	0.43
1:B:808:LEU:HG	1:B:812:MET:HE2	2.00	0.43
1:A:853:SER:O	1:A:854:LEU:HB3	2.18	0.43
1:A:928:ASP:OD2	1:C:921:THR:HA	2.19	0.43
1:A:586:VAL:HG21	1:A:712:PHE:CG	2.54	0.42
1:A:882:LEU:O	1:A:886:LEU:HG	2.19	0.42
1:A:830:PRO:HA	1:A:833:TRP:CD2	2.55	0.42
1:B:668:LEU:HG	1:B:707:ALA:HB2	2.02	0.41
1:C:830:PRO:HA	1:C:833:TRP:CD2	2.56	0.41
1:C:880:VAL:HB	1:C:881:PRO:HD3	2.03	0.41
1:C:879:THR:HG23	1:C:881:PRO:HD2	2.03	0.40
1:A:761:GLY:HA2	1:A:812:MET:HE3	2.01	0.40

There are no symmetry-related clashes.

5.3 Torsion angles

5.3.1 Protein backbone

In the following table, the Percentiles column shows the percent Ramachandran outliers of the chain as a percentile score with respect to all X-ray entries followed by that with respect to entries of similar resolution.

The Analysed column shows the number of residues for which the backbone conformation was analysed, and the total number of residues.

Mol	Chain	Analysed	Favoured	Allowed	Outliers	Percentiles	
1	A	376/405 (93%)	366 (97%)	10 (3%)	0	100	100
1	B	368/405 (91%)	354 (96%)	14 (4%)	0	100	100
1	C	373/405 (92%)	359 (96%)	14 (4%)	0	100	100
All	All	1117/1215 (92%)	1079 (97%)	38 (3%)	0	100	100

There are no Ramachandran outliers to report.

5.3.2 Protein sidechains [i](#)

In the following table, the Percentiles column shows the percent sidechain outliers of the chain as a percentile score with respect to all X-ray entries followed by that with respect to entries of similar resolution.

The Analysed column shows the number of residues for which the sidechain conformation was analysed, and the total number of residues.

Mol	Chain	Analysed	Rotameric	Outliers	Percentiles	
1	A	319/359 (89%)	316 (99%)	3 (1%)	82	89
1	B	307/359 (86%)	305 (99%)	2 (1%)	87	92
1	C	321/359 (89%)	319 (99%)	2 (1%)	89	93
All	All	947/1077 (88%)	940 (99%)	7 (1%)	87	92

All (7) residues with a non-rotameric sidechain are listed below:

Mol	Chain	Res	Type
1	A	579	HIS
1	A	743	LEU
1	A	924	SER
1	B	698	MET
1	B	750	ASN
1	C	905	ARG
1	C	924	SER

Some sidechains can be flipped to improve hydrogen bonding and reduce clashes. All (1) such sidechains are listed below:

Mol	Chain	Res	Type
1	C	825	HIS

5.3.3 RNA [i](#)

There are no RNA molecules in this entry.

5.4 Non-standard residues in protein, DNA, RNA chains [i](#)

There are no non-standard protein/DNA/RNA residues in this entry.

5.5 Carbohydrates [i](#)

There are no carbohydrates in this entry.

5.6 Ligand geometry [i](#)

3 ligands are modelled in this entry.

In the following table, the Counts columns list the number of bonds (or angles) for which Mogul statistics could be retrieved, the number of bonds (or angles) that are observed in the model and the number of bonds (or angles) that are defined in the chemical component dictionary. The Link column lists molecule types, if any, to which the group is linked. The Z score for a bond length (or angle) is the number of standard deviations the observed value is removed from the expected value. A bond length (or angle) with $|Z| > 2$ is considered an outlier worth inspection. RMSZ is the root-mean-square of all Z scores of the bond lengths (or angles).

Mol	Type	Chain	Res	Link	Bond lengths			Bond angles		
					Counts	RMSZ	# Z > 2	Counts	RMSZ	# Z > 2
2	4K7	A	1001	-	32,33,33	0.73	0	42,47,47	1.90	6 (14%)
2	4K7	B	1001	-	32,33,33	0.75	0	42,47,47	2.24	8 (19%)
2	4K7	C	1001	-	32,33,33	0.73	0	42,47,47	1.59	5 (11%)

In the following table, the Chirals column lists the number of chiral outliers, the number of chiral centers analysed, the number of these observed in the model and the number defined in the chemical component dictionary. Similar counts are reported in the Torsion and Rings columns. '-' means no outliers of that kind were identified.

Mol	Type	Chain	Res	Link	Chirals	Torsions	Rings
2	4K7	A	1001	-	-	0/13/36/36	0/4/4/4
2	4K7	B	1001	-	-	0/13/36/36	0/4/4/4
2	4K7	C	1001	-	-	0/13/36/36	0/4/4/4

There are no bond length outliers.

All (19) bond angle outliers are listed below:

Mol	Chain	Res	Type	Atoms	Z	Observed(°)	Ideal(°)
2	B	1001	4K7	O28-C13-N25	-3.08	117.50	121.73
2	B	1001	4K7	C24-N27-C19	-2.91	108.92	113.20
2	A	1001	4K7	C24-N27-C19	-2.90	108.93	113.20
2	A	1001	4K7	O28-C13-N25	-2.54	118.24	121.73
2	C	1001	4K7	C24-N27-C19	-2.42	109.63	113.20
2	C	1001	4K7	C24-N27-C20	-2.22	110.20	112.93
2	B	1001	4K7	C17-N25-C18	2.25	117.23	114.09

Continued on next page...

Continued from previous page...

Mol	Chain	Res	Type	Atoms	Z	Observed(°)	Ideal(°)
2	B	1001	4K7	C14-C17-N25	2.33	115.28	110.67
2	B	1001	4K7	C21-C18-N25	2.50	115.31	112.04
2	A	1001	4K7	C19-N27-C20	2.53	106.56	104.05
2	A	1001	4K7	C21-C18-N25	2.77	115.67	112.04
2	C	1001	4K7	C19-N27-C20	2.97	106.99	104.05
2	A	1001	4K7	C15-C21-C18	2.99	112.41	109.03
2	B	1001	4K7	C19-N27-C20	3.16	107.19	104.05
2	C	1001	4K7	C15-C21-C18	3.51	112.98	109.03
2	B	1001	4K7	C15-C21-C18	4.51	114.12	109.03
2	C	1001	4K7	N26-C13-N25	6.74	120.94	117.70
2	A	1001	4K7	N26-C13-N25	9.29	122.17	117.70
2	B	1001	4K7	N26-C13-N25	10.87	122.93	117.70

There are no chirality outliers.

There are no torsion outliers.

There are no ring outliers.

No monomer is involved in short contacts.

5.7 Other polymers [i](#)

There are no such residues in this entry.

5.8 Polymer linkage issues [i](#)

There are no chain breaks in this entry.

6 Fit of model and data

6.1 Protein, DNA and RNA chains

In the following table, the column labelled ‘#RSRZ > 2’ contains the number (and percentage) of RSRZ outliers, followed by percent RSRZ outliers for the chain as percentile scores relative to all X-ray entries and entries of similar resolution. The OWAB column contains the minimum, median, 95th percentile and maximum values of the occupancy-weighted average B-factor per residue. The column labelled ‘Q < 0.9’ lists the number of (and percentage) of residues with an average occupancy less than 0.9.

Mol	Chain	Analysed	<RSRZ>	#RSRZ>2	OWAB(Å ²)	Q<0.9
1	A	381/405 (94%)	0.36	24 (6%) 21 18	28, 49, 79, 111	0
1	B	375/405 (92%)	1.09	75 (20%) 1 1	38, 70, 105, 132	0
1	C	378/405 (93%)	0.30	19 (5%) 30 27	29, 53, 79, 113	0
All	All	1134/1215 (93%)	0.58	118 (10%) 7 6	28, 56, 95, 132	0

All (118) RSRZ outliers are listed below:

Mol	Chain	Res	Type	RSRZ
1	B	923	GLY	11.6
1	B	872	MET	7.9
1	C	964	GLU	7.1
1	B	891	THR	6.9
1	B	916	ALA	6.0
1	B	892	TYR	5.4
1	B	880	VAL	5.2
1	B	857	PRO	5.2
1	B	615	LEU	5.1
1	B	963	HIS	5.1
1	A	963	HIS	5.0
1	B	884	THR	5.0
1	C	963	HIS	5.0
1	C	702	HIS	4.8
1	B	962	PHE	4.8
1	B	955	ARG	4.8
1	B	917	GLU	4.7
1	B	890	ARG	4.4
1	B	853	SER	4.4
1	B	893	LYS	4.4
1	A	580	GLY	4.3
1	B	914	LEU	4.2
1	B	878	ILE	4.1

Continued on next page...

Continued from previous page...

Mol	Chain	Res	Type	RSRZ
1	B	662	GLY	4.1
1	B	744	SER	4.1
1	B	882	LEU	4.0
1	C	659	ALA	4.0
1	A	955	ARG	4.0
1	C	750	ASN	3.9
1	B	574	LYS	3.8
1	A	872	MET	3.8
1	B	953	HIS	3.8
1	B	858	ILE	3.8
1	A	924	SER	3.6
1	B	564	VAL	3.6
1	B	920	GLU	3.6
1	B	604	GLU	3.6
1	B	818	GLN	3.6
1	B	876	GLU	3.6
1	B	883	GLN	3.6
1	B	750	ASN	3.6
1	B	709	ILE	3.5
1	C	655	GLN	3.5
1	B	879	THR	3.5
1	B	924	SER	3.5
1	B	869	VAL	3.5
1	A	743	LEU	3.4
1	B	855	ASP	3.3
1	B	870	VAL	3.3
1	A	923	GLY	3.3
1	A	574	LYS	3.1
1	B	958	GLN	3.1
1	A	890	ARG	3.1
1	C	955	ARG	3.1
1	B	743	LEU	3.1
1	B	576	VAL	3.1
1	C	779	LEU	3.0
1	B	915	PRO	3.0
1	C	933	PHE	3.0
1	A	566	VAL	3.0
1	B	919	ARG	2.9
1	B	867	ARG	2.9
1	A	964	GLU	2.9
1	B	956	LEU	2.9
1	C	744	SER	2.8

Continued on next page...

Continued from previous page...

Mol	Chain	Res	Type	RSRZ
1	A	888	LYS	2.8
1	B	950	LEU	2.8
1	B	911	TYR	2.8
1	B	694	ILE	2.7
1	A	916	ALA	2.7
1	B	877	ASN	2.7
1	B	852	GLU	2.7
1	B	693	ASN	2.7
1	B	636	GLN	2.7
1	B	710	SER	2.7
1	A	642	ILE	2.7
1	A	891	THR	2.7
1	B	658	PHE	2.6
1	B	921	THR	2.6
1	C	854	LEU	2.6
1	B	642	ILE	2.6
1	A	853	SER	2.6
1	A	579	HIS	2.5
1	B	711	ASP	2.5
1	B	894	GLY	2.5
1	C	611	ARG	2.5
1	C	658	PHE	2.5
1	B	918	VAL	2.4
1	C	701	ALA	2.4
1	A	953	HIS	2.4
1	A	655	GLN	2.4
1	C	660	HIS	2.3
1	B	575	ASP	2.3
1	A	581	ALA	2.3
1	B	835	LEU	2.3
1	A	855	ASP	2.3
1	B	868	ALA	2.3
1	B	753	TYR	2.3
1	B	937	PHE	2.2
1	B	881	PRO	2.2
1	A	761	GLY	2.2
1	B	692	HIS	2.2
1	B	659	ALA	2.2
1	C	711[A]	ASP	2.2
1	B	708	MET	2.1
1	B	625	VAL	2.1
1	C	709	ILE	2.1

Continued on next page...

Continued from previous page...

Mol	Chain	Res	Type	RSRZ
1	B	712	PHE	2.1
1	B	873	ASP	2.1
1	B	895	GLY	2.1
1	C	694	ILE	2.1
1	C	661	LEU	2.1
1	A	567	GLY	2.1
1	A	917	GLU	2.1
1	B	563	VAL	2.0
1	B	925	LEU	2.0
1	B	607	SER	2.0
1	B	695	LEU	2.0

6.2 Non-standard residues in protein, DNA, RNA chains [i](#)

There are no non-standard protein/DNA/RNA residues in this entry.

6.3 Carbohydrates [i](#)

There are no carbohydrates in this entry.

6.4 Ligands [i](#)

In the following table, the Atoms column lists the number of modelled atoms in the group and the number defined in the chemical component dictionary. LLDF column lists the quality of electron density of the group with respect to its neighbouring residues in protein, DNA or RNA chains. The B-factors column lists the minimum, median, 95th percentile and maximum values of B factors of atoms in the group. The column labelled 'Q< 0.9' lists the number of atoms with occupancy less than 0.9.

Mol	Type	Chain	Res	Atoms	RSCC	RSR	LLDF	B-factors(Å ²)	Q<0.9
2	4K7	C	1001	30/30	0.89	0.21	0.19	43,61,81,180	0
2	4K7	B	1001	30/30	0.87	0.24	0.07	57,80,106,117	0
2	4K7	A	1001	30/30	0.96	0.18	-0.36	32,48,70,89	0

6.5 Other polymers [i](#)

There are no such residues in this entry.