



wwPDB X-ray Structure Validation Summary Report ⓘ

Feb 13, 2017 – 08:50 pm GMT

PDB ID : 2Z71
Title : Structure of truncated mutant CYS1GLY of penicillin V acylase from bacillus
sphaericus co-crystallized with penicillin V
Authors : Pathak, M.C.; Brannigan, J.; Dodson, G.G.; Suresh, C.G.
Deposited on : 2007-08-10
Resolution : 2.60 Å(reported)

This is a wwPDB X-ray Structure Validation Summary Report for a publicly released PDB entry.

We welcome your comments at validation@mail.wwpdb.org

A user guide is available at

<http://wwpdb.org/validation/2016/XrayValidationReportHelp>

with specific help available everywhere you see the ⓘ symbol.

The following versions of software and data (see [references ⓘ](#)) were used in the production of this report:

MolProbity : 4.02b-467
Mogul : 1.7.2 (RC1), CSD as538be (2017)
Xtriage (Phenix) : **NOT EXECUTED**
EDS : **NOT EXECUTED**
Percentile statistics : 20161228.v01 (using entries in the PDB archive December 28th 2016)
Ideal geometry (proteins) : Engh & Huber (2001)
Ideal geometry (DNA, RNA) : Parkinson et al. (1996)
Validation Pipeline (wwPDB-VP) : recalc28949

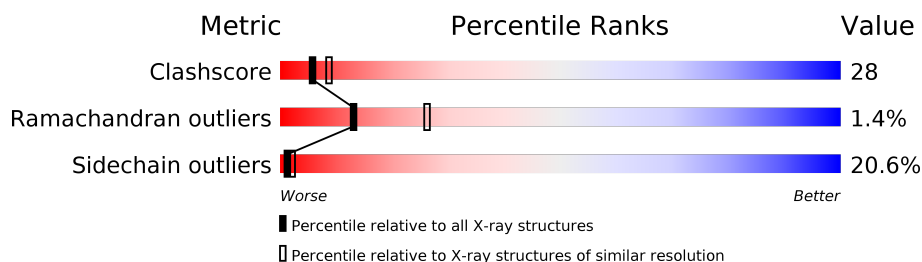
1 Overall quality at a glance

The following experimental techniques were used to determine the structure:

X-RAY DIFFRACTION

The reported resolution of this entry is 2.60 Å.

Percentile scores (ranging between 0-100) for global validation metrics of the entry are shown in the following graphic. The table shows the number of entries on which the scores are based.



Metric	Whole archive (#Entries)	Similar resolution (#Entries, resolution range(Å))
Clashscore	112137	2895 (2.60-2.60)
Ramachandran outliers	110173	2848 (2.60-2.60)
Sidechain outliers	110143	2848 (2.60-2.60)

The table below summarises the geometric issues observed across the polymeric chains and their fit to the electron density. The red, orange, yellow and green segments on the lower bar indicate the fraction of residues that contain outliers for ≥ 3 , 2, 1 and 0 types of geometric quality criteria. A grey segment represents the fraction of residues that are not modelled. The numeric value for each fraction is indicated below the corresponding segment, with a dot representing fractions $\leq 5\%$. The upper red bar (where present) indicates the fraction of residues that have poor fit to the electron density. The numeric value is given above the bar.

Note EDS was not executed.

Mol	Chain	Length	Quality of chain
1	A	335	
1	C	335	

2 Entry composition [i](#)

There are 3 unique types of molecules in this entry. The entry contains 5260 atoms, of which 0 are hydrogens and 0 are deuteriums.

In the tables below, the ZeroOcc column contains the number of atoms modelled with zero occupancy, the AltConf column contains the number of residues with at least one atom in alternate conformation and the Trace column contains the number of residues modelled with at most 2 atoms.

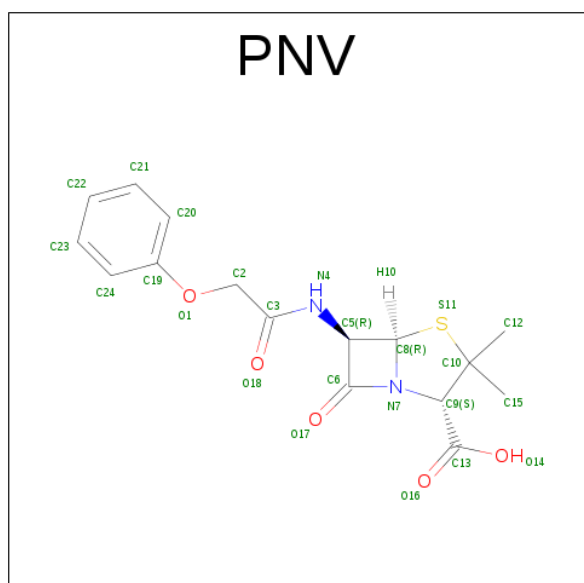
- Molecule 1 is a protein called Penicillin acylase.

Mol	Chain	Residues	Atoms					ZeroOcc	AltConf	Trace
1	A	330	Total	C	N	O	S	0	0	0
			2577	1640	423	502	12			
1	C	331	Total	C	N	O	S	0	0	0
			2584	1645	424	503	12			

There are 4 discrepancies between the modelled and reference sequences:

Chain	Residue	Modelled	Actual	Comment	Reference
A	1	GLY	CYS	ENGINEERED	UNP P12256
A	98	ARG	THR	CONFLICT	UNP P12256
C	1	GLY	CYS	ENGINEERED	UNP P12256
C	98	ARG	THR	CONFLICT	UNP P12256

- Molecule 2 is (2S,5R,6R)-3,3-DIMETHYL-7-OXO-6-(2-PHENOXYACETAMIDO)-4-THIA-1-AZABICYCLO(3.2.0)HEPTANE-2-CARBOXYLIC ACID (three-letter code: PNV) (formula: C₁₆H₁₈N₂O₅S).



Mol	Chain	Residues	Atoms					ZeroOcc	AltConf
2	A	1	Total	C	N	O	S	0	0
			24	16	2	5	1		
2	C	1	Total	C	N	O	S	0	0
			24	16	2	5	1		

- Molecule 3 is water.

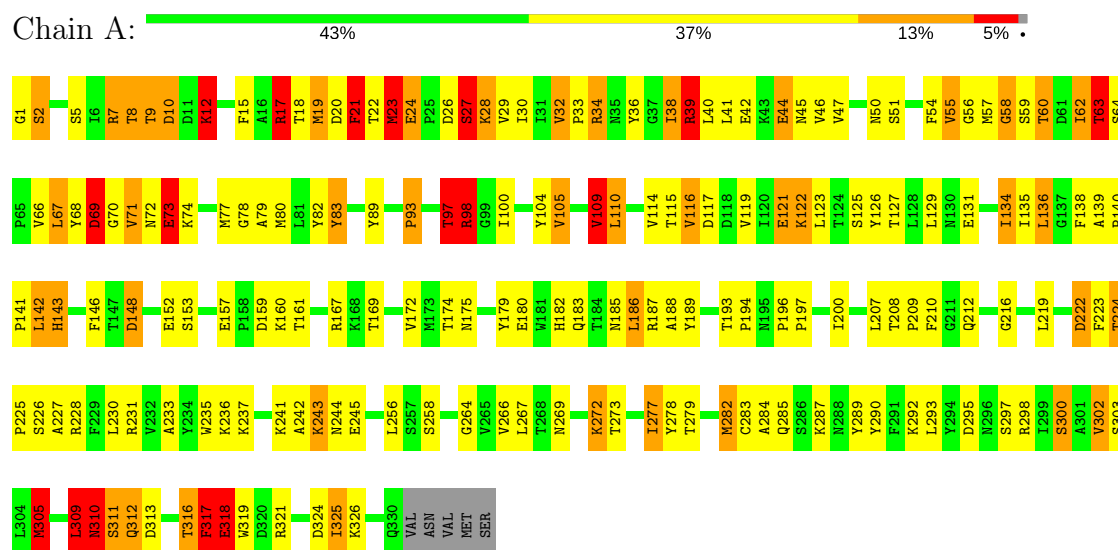
Mol	Chain	Residues	Atoms		ZeroOcc	AltConf
3	A	18	Total	O	0	0
			18	18		
3	C	33	Total	O	0	0
			33	33		

3 Residue-property plots [i](#)

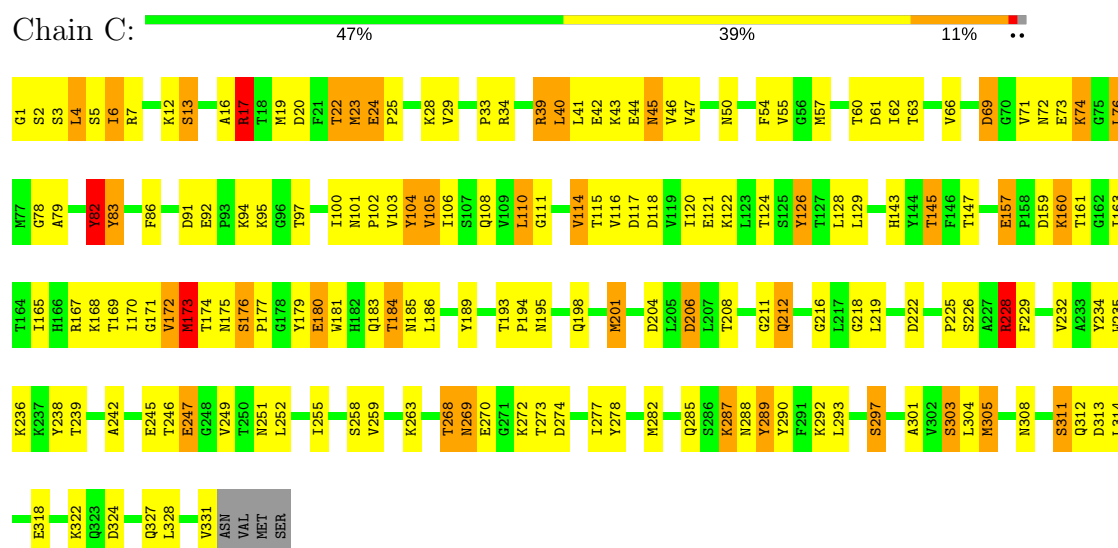
These plots are drawn for all protein, RNA and DNA chains in the entry. The first graphic for a chain summarises the proportions of the various outlier classes displayed in the second graphic. The second graphic shows the sequence view annotated by issues in geometry and electron density. Residues are color-coded according to the number of geometric quality criteria for which they contain at least one outlier: green = 0, yellow = 1, orange = 2 and red = 3 or more. A red dot above a residue indicates a poor fit to the electron density ($RSRZ > 2$). Stretches of 2 or more consecutive residues without any outlier are shown as a green connector. Residues present in the sample, but not in the model, are shown in grey.

Note EDS was not executed.

• Molecule 1: Penicillin acylase



• Molecule 1: Penicillin acylase



4 Data and refinement statistics

Xtriage (Phenix) and EDS were not executed - this section is therefore incomplete.

Property	Value	Source
Space group	C 2 2 21	Depositor
Cell constants a, b, c, α , β , γ	129.73Å 158.89Å 90.74Å 90.00° 90.00° 90.00°	Depositor
Resolution (Å)	20.00 – 2.60	Depositor
% Data completeness (in resolution range)	89.7 (20.00-2.60)	Depositor
R_{merge}	(Not available)	Depositor
R_{sym}	(Not available)	Depositor
Refinement program	REFMAC 5.1.24	Depositor
R, R_{free}	0.239 , 0.270	Depositor
Estimated twinning fraction	No twinning to report.	Xtriage
Total number of atoms	5260	wwPDB-VP
Average B, all atoms (Å ²)	51.0	wwPDB-VP

5 Model quality [i](#)

5.1 Standard geometry [i](#)

Bond lengths and bond angles in the following residue types are not validated in this section: PNV

The Z score for a bond length (or angle) is the number of standard deviations the observed value is removed from the expected value. A bond length (or angle) with $|Z| > 5$ is considered an outlier worth inspection. RMSZ is the root-mean-square of all Z scores of the bond lengths (or angles).

Mol	Chain	Bond lengths		Bond angles	
		RMSZ	$\# Z > 5$	RMSZ	$\# Z > 5$
1	A	1.93	50/2632 (1.9%)	0.85	15/3577 (0.4%)
1	C	1.96	60/2639 (2.3%)	0.72	8/3587 (0.2%)
All	All	1.95	110/5271 (2.1%)	0.78	23/7164 (0.3%)

Chiral center outliers are detected by calculating the chiral volume of a chiral center and verifying if the center is modelled as a planar moiety or with the opposite hand. A planarity outlier is detected by checking planarity of atoms in a peptide group, atoms in a mainchain group or atoms of a sidechain that are expected to be planar.

Mol	Chain	#Chirality outliers	#Planarity outliers
1	A	0	8

The worst 5 of 110 bond length outliers are listed below:

Mol	Chain	Res	Type	Atoms	Z	Observed(Å)	Ideal(Å)
1	C	247	GLU	CD-OE1	11.57	1.38	1.25
1	C	318	GLU	CD-OE2	11.01	1.37	1.25
1	A	284	ALA	CA-CB	-10.72	1.29	1.52
1	A	245	GLU	CD-OE2	9.47	1.36	1.25
1	C	181	TRP	CB-CG	8.34	1.65	1.50

The worst 5 of 23 bond angle outliers are listed below:

Mol	Chain	Res	Type	Atoms	Z	Observed(°)	Ideal(°)
1	A	305	MET	CB-CA-C	13.57	137.55	110.40
1	A	97	THR	C-N-CA	-9.71	97.41	121.70
1	A	98	ARG	CA-C-N	-6.86	102.49	116.20
1	A	98	ARG	CD-NE-CZ	-6.66	114.27	123.60
1	A	310	ASN	O-C-N	-6.08	112.98	122.70

There are no chirality outliers.

5 of 8 planarity outliers are listed below:

Mol	Chain	Res	Type	Group
1	A	310	ASN	Mainchain,Peptide
1	A	311	SER	Mainchain
1	A	317	PHE	Peptide
1	A	44	GLU	Peptide
1	A	98	ARG	Sidechain,Mainchain,Peptide

5.2 Too-close contacts

In the following table, the Non-H and H(model) columns list the number of non-hydrogen atoms and hydrogen atoms in the chain respectively. The H(added) column lists the number of hydrogen atoms added and optimized by MolProbity. The Clashes column lists the number of clashes within the asymmetric unit, whereas Symm-Clashes lists symmetry related clashes.

Mol	Chain	Non-H	H(model)	H(added)	Clashes	Symm-Clashes
1	A	2577	0	2553	184	0
1	C	2584	0	2562	110	0
2	A	24	0	17	4	0
2	C	24	0	16	8	0
3	A	18	0	0	1	0
3	C	33	0	0	1	0
All	All	5260	0	5148	290	0

The all-atom clashscore is defined as the number of clashes found per 1000 atoms (including hydrogen atoms). The all-atom clashscore for this structure is 28.

The worst 5 of 290 close contacts within the same asymmetric unit are listed below, sorted by their clash magnitude.

Atom-1	Atom-2	Interatomic distance (Å)	Clash overlap (Å)
1:C:305:MET:CE	1:C:305:MET:SD	2.03	1.46
1:A:24:GLU:HG3	1:A:277:ILE:CD1	1.49	1.41
1:A:24:GLU:CG	1:A:277:ILE:HD12	1.63	1.26
1:C:174:THR:CG2	1:C:175:ASN:H	1.50	1.20
1:A:26:ASP:O	1:A:27:SER:HB2	1.36	1.16

There are no symmetry-related clashes.

5.3 Torsion angles [i](#)

5.3.1 Protein backbone [i](#)

In the following table, the Percentiles column shows the percent Ramachandran outliers of the chain as a percentile score with respect to all X-ray entries followed by that with respect to entries of similar resolution.

The Analysed column shows the number of residues for which the backbone conformation was analysed, and the total number of residues.

Mol	Chain	Analysed	Favoured	Allowed	Outliers	Percentiles	
1	A	328/335 (98%)	297 (90%)	24 (7%)	7 (2%)	8	15
1	C	329/335 (98%)	302 (92%)	25 (8%)	2 (1%)	28	53
All	All	657/670 (98%)	599 (91%)	49 (8%)	9 (1%)	13	26

5 of 9 Ramachandran outliers are listed below:

Mol	Chain	Res	Type
1	A	23	MET
1	A	27	SER
1	A	83	TYR
1	C	23	MET
1	C	211	GLY

5.3.2 Protein sidechains [i](#)

In the following table, the Percentiles column shows the percent sidechain outliers of the chain as a percentile score with respect to all X-ray entries followed by that with respect to entries of similar resolution.

The Analysed column shows the number of residues for which the sidechain conformation was analysed, and the total number of residues.

Mol	Chain	Analysed	Rotameric	Outliers	Percentiles	
1	A	286/291 (98%)	224 (78%)	62 (22%)	1	2
1	C	287/291 (99%)	231 (80%)	56 (20%)	1	2
All	All	573/582 (98%)	455 (79%)	118 (21%)	1	2

5 of 118 residues with a non-rotameric sidechain are listed below:

Mol	Chain	Res	Type
1	A	287	LYS

Continued on next page...

Continued from previous page...

Mol	Chain	Res	Type
1	C	17	ARG
1	C	287	LYS
1	A	300	SER
1	A	316	THR

Some sidechains can be flipped to improve hydrogen bonding and reduce clashes. 5 of 19 such sidechains are listed below:

Mol	Chain	Res	Type
1	A	251	ASN
1	A	312	GLN
1	C	269	ASN
1	A	212	GLN
1	C	288	ASN

5.3.3 RNA [i](#)

There are no RNA molecules in this entry.

5.4 Non-standard residues in protein, DNA, RNA chains [i](#)

There are no non-standard protein/DNA/RNA residues in this entry.

5.5 Carbohydrates [i](#)

There are no carbohydrates in this entry.

5.6 Ligand geometry [i](#)

2 ligands are modelled in this entry.

In the following table, the Counts columns list the number of bonds (or angles) for which Mogul statistics could be retrieved, the number of bonds (or angles) that are observed in the model and the number of bonds (or angles) that are defined in the chemical component dictionary. The Link column lists molecule types, if any, to which the group is linked. The Z score for a bond length (or angle) is the number of standard deviations the observed value is removed from the expected value. A bond length (or angle) with $|Z| > 2$ is considered an outlier worth inspection. RMSZ is the root-mean-square of all Z scores of the bond lengths (or angles).

Mol	Type	Chain	Res	Link	Bond lengths			Bond angles		
					Counts	RMSZ	# Z > 2	Counts	RMSZ	# Z > 2
2	PNV	A	903	-	23,26,26	1.18	3 (13%)	34,39,39	3.08	11 (32%)
2	PNV	C	904	-	23,26,26	1.46	5 (21%)	34,39,39	3.36	16 (47%)

In the following table, the Chirals column lists the number of chiral outliers, the number of chiral centers analysed, the number of these observed in the model and the number defined in the chemical component dictionary. Similar counts are reported in the Torsion and Rings columns. '-' means no outliers of that kind were identified.

Mol	Type	Chain	Res	Link	Chirals	Torsions	Rings
2	PNV	A	903	-	-	0/9/44/44	0/3/3/3
2	PNV	C	904	-	-	0/9/44/44	0/3/3/3

The worst 5 of 8 bond length outliers are listed below:

Mol	Chain	Res	Type	Atoms	Z	Observed(Å)	Ideal(Å)
2	C	904	PNV	C10-S11	-3.75	1.77	1.85
2	A	903	PNV	C10-S11	-3.21	1.78	1.85
2	C	904	PNV	C8-S11	-3.15	1.76	1.81
2	C	904	PNV	C6-N7	-2.70	1.31	1.37
2	A	903	PNV	C8-S11	-2.66	1.77	1.81

The worst 5 of 27 bond angle outliers are listed below:

Mol	Chain	Res	Type	Atoms	Z	Observed(°)	Ideal(°)
2	A	903	PNV	S11-C8-N7	-9.47	92.37	105.10
2	C	904	PNV	S11-C8-N7	-7.80	94.62	105.10
2	C	904	PNV	C5-C8-N7	-5.57	80.80	87.98
2	C	904	PNV	C2-C3-N4	-3.72	109.66	116.28
2	A	903	PNV	C5-C8-N7	-3.43	83.56	87.98

There are no chirality outliers.

There are no torsion outliers.

There are no ring outliers.

2 monomers are involved in 12 short contacts:

Mol	Chain	Res	Type	Clashes	Symm-Clashes
2	A	903	PNV	4	0
2	C	904	PNV	8	0

5.7 Other polymers [i](#)

There are no such residues in this entry.

5.8 Polymer linkage issues [i](#)

There are no chain breaks in this entry.

6 Fit of model and data [i](#)

6.1 Protein, DNA and RNA chains [i](#)

EDS was not executed - this section is therefore empty.

6.2 Non-standard residues in protein, DNA, RNA chains [i](#)

EDS was not executed - this section is therefore empty.

6.3 Carbohydrates [i](#)

EDS was not executed - this section is therefore empty.

6.4 Ligands [i](#)

EDS was not executed - this section is therefore empty.

6.5 Other polymers [i](#)

EDS was not executed - this section is therefore empty.